

JAAS

Accepted Manuscript



This is an *Accepted Manuscript*, which has been through the Royal Society of Chemistry peer review process and has been accepted for publication.

Accepted Manuscripts are published online shortly after acceptance, before technical editing, formatting and proof reading. Using this free service, authors can make their results available to the community, in citable form, before we publish the edited article. We will replace this *Accepted Manuscript* with the edited and formatted *Advance Article* as soon as it is available.

You can find more information about *Accepted Manuscripts* in the [Information for Authors](#).

Please note that technical editing may introduce minor changes to the text and/or graphics, which may alter content. The journal's standard [Terms & Conditions](#) and the [Ethical guidelines](#) still apply. In no event shall the Royal Society of Chemistry be held responsible for any errors or omissions in this *Accepted Manuscript* or any consequences arising from the use of any information it contains.

Fast determination of surface density of titanium in ultrathin layers using LIBS spectrometry

Tomáš Kratochvíl^a, Tomáš Černohorský^{a*}, Petr Knotek^b, Lukáš Kalina^c, Jakub Návesník^a, Miloslav Pouzar^a, Magdalena Zvolská^a

^a *University of Pardubice, Institute of Environmental and Chemical Engineering, Studentska 573, 532 10 Pardubice, Czech Republic*

^b *University of Pardubice, Faculty of Chemical Technology, Joint Laboratory of Solid State Chemistry of IMC and University of Pardubice, Studentska 573, 532 10 Pardubice, Czech Republic*

^c *Brno University of Technology, Faculty of Chemistry, Centre for Materials Research CZ.1.05/2.1.00/01.0012, Purkyňova 464/118, Brno, CZ-612 00, Czech Republic*

* Corresponding author. E-mail address: tomas.cernohorsky@upce.cz (T. Cernohorsky).

Abstract

This work deals with the use of laser-induced breakdown spectroscopy (LIBS) for determining the surface density of titanium in ultrathin layers, particularly in ultrathin layers on a steel sheet. The results obtained by LIBS spectroscopy were compared with those obtained by wavelength dispersive X-ray fluorescence spectroscopy (WDXRF), X-ray photoelectron spectroscopy (XPS) and laser ablation inductively coupled plasma time of flight mass spectrometry (LA-ICP-TOF-MS). A simple, cheap and efficient method for the determination of the surface density of titanium in thin layers has been developed.

1 Introduction

Thin films of titanium are widely used in many fields of material science. The main reason for the use of Ti coating is the excellent corrosion resistance to many highly corrosive substances. The high corrosion resistance of titanium films results from the formation of very stable, continuous, highly adherent, and protective oxide films on metal surfaces. In the production process, it is necessary to control the thickness of the titanium layer on the

1
2
3 substrate. An effective way of monitoring the amount of titanium deposited on the substrate is
4 determination of the surface density of titanium.
5
6

7
8 In recent years a number of analytical methods have become available for depth
9 profiling of solid surfaces. The most commonly used techniques for the chemical
10 characterization of thin films are expensive and time consuming (see, for example, X-ray
11 photoelectron spectroscopy (XPS),^{1,2} X-ray diffraction (XRD),^{3,4} Auger electron spectroscopy
12 (AES),⁵ secondary ions mass spectrometry (SIMS),⁶ or limited in terms of the sample
13 geometry towards the excitation source (Glow discharge optical emission spectrometry
14 (GDOES)⁷). Furthermore, the operation of the above mentioned techniques is usually
15 expensive. Moreover, only few works (e.g. LA-ICP-MS)⁸ deal with the issue of quantitative
16 analysis of thin layers.
17
18
19
20
21
22
23

24 The use of LIBS could be advantageous since it is a relatively cheap technique that
25 does not require high vacuum equipment or consumption of inert gases and it allows analysis
26 of samples of different sizes without any pre-treatment. LIBS is a well-established tool for
27 qualitative, semi-quantitative and quantitative analysis of surfaces. The principle of LIBS
28 spectroscopy is the generating of micro plasma above the surface of the sample with a laser
29 pulse. The interaction of the laser beam with the sample leads to the melting and ablation of
30 the material from the sample and subsequently to the formation of the plasma. The plasma at
31 certain conditions, has the same composition as the ablated material from the sample surface.
32 The radiation emitted by excited atoms and ions in the plasma, which is characteristic for each
33 element, is detected for a period of a few microseconds. Given the characteristics of LIBS
34 spectrometer or the excitation source (laser), respectively, it is possible to analyse even a very
35 thin layer of the sample.
36
37
38
39
40
41
42
43
44

45 LIBS technique was previously used for elemental mapping or profiling of solid
46 samples mostly with the aim to achieve high depth resolution.⁹⁻¹² Different research groups
47 employed LIBS for characterization of chemical composition and element distributions on
48 surfaces.^{13,14} A quantitative and semi-quantitative LIBS analysis has been carried out also as a
49 possible diagnostic tool for thin films elemental composition.^{15,16} A comparison of the IR
50 nanosecond laser ablation parameters for polished and nanostructured titanium samples has
51 been also performed in a recent study.¹⁷ The suitability of LIBS technique for quantitative
52 analysis of titanium in Al₂O₃ with a fixed plasma temperature calibration method was
53 demonstrated in a recent study.¹⁸ However, none of these works deals with the use of LIBS
54 technique for determination of the surface density of an element.
55
56
57
58
59
60

1
2
3 The objective of the present study was to use a commercially available LIBS
4 spectrometer for carrying out a fast and cheap quantitative analysis of thin layer with titanium
5 on a steel surface. The quantitative analysis has been carried out to determine the surface
6 density of titanium in the ultrathin layer (nanometres) on a steel sheet. The effectiveness of
7 LIBS has been evaluated by comparison of results obtained by other analytical techniques,
8 namely XPS, WDXRF and LA-ICP-TOF-MS.
9
10
11
12
13
14

15 **2 Experimental**

16 **2.1 LIBS instrumentation**

17
18
19 The commercially available fully compact LIBS instrument (LEA S500, Solar TII
20 Ltd., Minsk, Belarus) was used in this work. The details of the instrument are given
21 elsewhere.¹⁹ The system consists of a dual pulse Q-switched Nd:YAG laser operating at 1064
22 nm in a collinear dual-pulse arrangement. The laser emits two co-linear pulses of about 12 ns
23 duration with variable energy per pulse, which can be set from 80 to 150 mJ at a maximum
24 repetition rate of 20 Hz. The interpulse delay can be set from 0 to 20 μ s. The Czerny Turner
25 spectrograph with a focal length of 500 mm and a grating of 1800 lines mm^{-1} provides a linear
26 reciprocal dispersion of 1 nm mm^{-1} . The spectrograph is fully sealed and can be purged by a
27 low flow of argon or helium, consequently the wavelength range of the spectrograph can be
28 set from 170 to 800 nm. Recording of the spectra is carried out by means of a back thinned
29 and front illuminated CCD-camera (2048 x 14 pixels) with a fixed integration time (gate
30 width) of 1 ms. Optical spectral resolution is better than 0.03 nm for whole spectral range.
31 Spectra can be measured in 30 nm wide regions. The samples are placed inside the sample
32 chamber on the top of the motorized positioning table and the samples can be automatically
33 moved during the analysis. The sample chamber can be flushed with inert gas (He, Ar) or,
34 alternatively, can be evacuated. Selection of the analyzed area of the sample surface is
35 performed via an inbuilt video system with a magnification up to 100 \times . The measurements are
36 fully software controlled (position and number of points in the pattern).
37
38
39
40
41
42
43
44
45
46
47
48
49
50
51
52
53

54 **2.2 XPS instrumentation**

55
56 XPS analyses were carried out with Axis Ultra DLD spectrometer using a
57 monochromatic Al $K\alpha$ ($h\nu = 1486.7$ eV) X-ray source operating at 150 W (10 mA, 15 kV).
58 The spectra were obtained using an analysis area of $\sim 300 \times 700$ μm . The high resolution
59 spectra, which are required for quantitative analysis, were measured with the step size 0.1 eV
60

1
2
3 and 20 eV pass energy. Instrument base pressure was $2 \cdot 10^{-8}$ Pa. Spectra were analyzed using
4 CasaXPS software (version 2.3.15) and have been charge corrected to the main line of the
5 carbon C 1s spectral component (C–C, C–H) set to 284.80 eV. A standard Shirley background
6 is used for all sample spectra.
7
8
9

10 11 **2.3 WDXRF instrumentation**

12 The determination of titanium in thin layer was carried out using a bench-top vacuum
13 wavelength dispersive X-ray fluorescence spectrometer Spectroscan Makc GVII (Spectron
14 Optel, Wed Petersburg, Russia). WDXRF spectrometer is equipped with a bent lithium
15 fluoride (200) crystal in a Johansson arrangement. A Pd X-ray tube was operated at 40 kV
16 (current 2 mA, output 80 W). The apparatus is equipped with a sealed gas proportional
17 detector filled with Xe.
18
19
20
21
22
23
24
25
26

27 **2.4 LA-ICP-TOF-MS instrumentation**

28 The Optimass 8000 ICP-*oa*-TOF-MS instrument (GBC Scientific Equipment Pty Ltd.,
29 Australia) was used throughout this study. The instrument, which detail description is given
30 elsewhere,²⁰ was equipped with orthogonal acceleration (*oa*) and Time of Flight mass
31 analyser. Instrument settings are summarised in Table 1.
32
33
34
35
36
37

38 **2.5 Sample characterization**

39 Scanning Electron Microscope (SEM) JEOL JSM-5500LV at acceleration voltage of
40 the electron beam 15–20 kV was adopted for visualization of typical representatives of
41 ablation craters on the samples of steel sheet. The depth of the craters were analyzed
42 employing Digital holographic microscopy (DHM), for details see.^{21,22}
43
44
45
46
47
48

49 **2.6 Samples and reference values**

50 A set of sheet steel samples with ultrathin titanium layer deposited on the layer of tin,
51 which ensures better adhesion of titanium to the substrate (steel sheet), was used for the
52 experiments. The values of the surface density of titanium in thin layer were determined by
53 etching of a defined area on the sample surface and subsequent analysis of the obtained
54 solution (ICP-OES, ICP-ToF-MS). The main disadvantage of this procedure is the necessity
55 to etch a large area of steel to ensure the sufficient concentration for determination of titanium
56
57
58
59
60

1
2
3 in solution. Unfortunately, this process is time consuming and inapplicable for the standard
4 quality control process in the fabrication.
5
6

7 The values of surface densities obtained from etch analysis were validated using the
8 reference XPS technique. The values obtained from etch and XPS analysis were in a good
9 agreement (correlation coefficient 0.994) and therefore were used for the calibration.
10 However, given the cost and complexity of the device operation (analysis time 45 minutes per
11 sample; high vacuum), this method is not suitable for standard quality control process.
12
13
14
15
16

17 18 **2.7 Optimization of the experimental conditions**

19 In general, the optimization of LIBS analysis is a complex task. It is necessary to find
20 the best combination of several basic parameters of the LIBS device (energy of laser pulses,
21 delay between pulses, focal spot diameter, number of analytical points, spectrometer slit
22 width, etc.) providing satisfactory values of basic characteristics of the obtained analytical
23 method (LOD, dynamical range, etc.). The above-mentioned LIBS parameters are closely
24 linked together and a minor change in one of them entails the necessity of a substantial
25 change in the others. Development of the proper LIBS method is thus time consuming and
26 large amounts of samples are consumed during this process. Our optimization procedure on
27 the LIBS device was based on dividing LIBS parameters into the fixed and variable ones.
28 Fixed parameters, which are typically the number of shots, the number of analytical points
29 and the spectrometer slit width are set in the beginning of the optimization process with
30 respect to the sample character and demands on the analytical process and they are not
31 changed any more. These parameters were optimized previously. The most important variable
32 parameters were energy of a laser pulse; interpulse delay and focal spot diameter. These
33 parameters strongly influence the sensitivity, dynamic range and repeatability of the
34 measurements. They were optimized simultaneously and proper parameters, signal-to-
35 background ratio (SBR) and RSD%, were used for evaluation of measurement quality. The
36 optimization of LIBS parameters was performed on the sample with a mean surface density of
37 Ti being 0.6285 mg m^{-2} . The Ti I 337.28 nm spectral line was repeatedly measured (three
38 series — each with four shots), and then optimization criterion SBR values of the LIBS signal
39 were evaluated (see Figs. 1–3). As can be seen from Figs. 1–3, LIBS analysis was most
40 influenced by changing the parameters of laser pulse energy and focal spot diameter. The
41 optimal parameters for LIBS instrument used are listed in chapter 3.1.
42
43
44
45
46
47
48
49
50
51
52
53
54
55
56
57
58
59
60

3 Results and discussion

3.1 LIBS spectra and preferences

In case of the samples analysed in this work a non-homogeneous layer of tin on the iron substrate was passivated by titanium. Titanium was present in the form of islands of TiO_2 with diameters in the tens of nanometers. Simultaneously, the titanium surface density was very low (up to 1 mg m^{-2}). Unfortunately, the most common techniques in quantitative analysis of the mentioned type of samples fail. Conventional etching technique requiring decomposition of the sample to form a solution, given the type of sample and the complexity of such an analysis, is unusable for the routine analysis. Due to the fact, that the LIBS technique allows to ablate material from thin surface layer containing titanium, it can record the high signal intensity of spectral lines of titanium, despite its very low concentrations.

Based on the preliminary evaluation, the most suitable region of the titanium spectral lines was selected in the range from 320 to 350 nm. The LIBS spectrum recorded in the 320 – 350 nm wavelength region contained almost all of the strong emission lines of Ti. These emission lines were sufficiently intense and relatively spectrally pure, without interferences from iron and tin lines. Typical LIBS spectrum of Ti obtained under LIBS analysis conditions is shown in Figs. 4-5.

Optimization of LIBS spectrometer parameters for determination of titanium was performed with respect to the properties of the sample. The aim of the optimization of the conditions was to achieve maximum values of the signal to background ratio (SBR) of Ti lines. The sample with the mean surface density of Ti (0.6285 mg m^{-2}) was used for optimization of experimental conditions. The LIBS analysis was performed with a focal spot diameter of $400 \mu\text{m}$, a laser pulse energy of 130 mJ, 1 laser shots per analytical point, 4 analytical points per sample and a spectrometer slit width of $15 \mu\text{m}$. Typical delay time and gate width values of $6 \mu\text{s}$ and 1 ms, respectively, were used. All measurements were performed under the optimal operating conditions.

3.2 The influence of ablation conditions on the spectra

An important task in the development of a method for determination of Ti in thin layer was the selection of an appropriate LIBS mode. As is evident from Figs. 4-5, spectrally cleaner spectrum without interference lines from the substrate layer was recorded in the single-pulse mode. Simultaneously, in the single-pulse mode, it was also possible to detect

1
2
3 much more lines of Ti and a higher ratio SBR of Ti lines was recorded. On the other hand,
4 higher absolute intensities of Ti lines were obtained in a double-pulse mode. Nevertheless, the
5 best fitted calibration curve was obtained in a double-pulse mode. According to Vrenegor,²³
6 we assume that this fact is caused by more effective elimination of the matrix effect in the
7 double-pulse mode in contrast to the single-pulse mode. Since double-pulse mode provided a
8 preferable linearity of the calibrations and simultaneously a sufficient sensitivity and better
9 RSD of measurements, was chosen as the optimal mode for the following measurements.

10
11 Under the optimal conditions, the depth of the crater after first laser shot was about
12 150 nm. Second laser shot created in the same place a crater with a depth of about 330 nm and
13 the third laser shot created a crater with a depth of about 530 nm. Fig. 6 shows the images of
14 the individual craters and the result of DHM profilometry of the craters created by the laser
15 shots focusing at the 400 μm .

16
17 Our assumption about ablation of the complete layer with titanium by the first laser
18 shot (depth of crater 150 nm) was verified by monitoring of the intensities of titanium lines.
19 Under optimal conditions it was possible to fully ablate the layer with titanium just by the one
20 laser shot. Subsequently, the second laser shot focused to the same spot provided the spectrum
21 in which no lines of titanium were detected (see Figs. 4-5). In conjunction with the
22 measurements of the crater depth it was possible to indirectly estimate that the titanium is
23 present in the layer with the thickness less than 150 nm. Simultaneously, the intensities of iron
24 lines, which is the major component of the substrate of the layer containing titanium, were
25 monitored. After the first laser shot, when layer with titanium was ablated predominantly, the
26 intensities of titanium and tin lines were maximal. In contrast, during the second laser shot (in
27 the same spot) only substrate was ablated and intensities of iron lines increased sharply
28 (without the present of titanium lines).

29
30 Verification of the successful etching of the complete layer with titanium was carried
31 out also using the LIBS analysis. As is evident from the Fig. 7, the sample after etching
32 provided spectrum without the presence of titanium lines in contrast to the spectrum obtained
33 from the same sample before etching. Due to a very low value of LIBS LOD it is a sufficient
34 evidence of etching of the complete layer with the titanium. Furthermore, the spectrum
35 obtained after the etching was the same (without the presence of titanium lines) as the
36 spectrum obtained by the second double-pulse shot on the sample without the etching. The
37 possibility of the using LIBS for the control of the primary analysis (success of the complete
38 etching) is another significant advantage of this technique.

3.3 Calibration curves

Under optimal conditions, the measurements to obtain a calibration curve using LIBS device were performed. Several Ti lines in the region 320-340 nm were found to be considerably sensitive and provided a linear calibration. Specifically Ti(I) 337.28 nm line showed the best linear dependency on the surface density over a concentration range 0 – 1 mg m⁻². Integral net intensities of titanium analytical line with wavelength 337.28 nm were plotted against corresponding titanium surface densities and the calibration model was suggested for the description of measured data (see Fig. 8 and Table 2). The calibration curves demonstrate that the LIBS signal intensity at 337.28 nm line increases linearly with the surface density of titanium. The generated calibration curve shows a good linearity and precision. Each data point presented in Fig. 8 is the statistical average of 12 scans and the standard error (standard deviation divided by square root of 12) is depicted by the error bar.

The precision of any analytical instrument is defined as the repeatability of the measurement, and is usually estimated from the relative standard deviation. The RSD of the measurements on the LIBS device varied in the range of 4–11%. The specific values of RSD are shown by the error bars, which represent the standard deviation from multiple measurements at each value (see Fig. 8).

Method of the determination surface density of Ti in the samples was also developed for the WDXRF spectrometer. The obtained calibration curves showed compliance with the calibration curves obtained using LIBS (see Table 2). However, the calibration curve was not accurate enough. The significantly worse fitting of the curve calculated for WDXRF compare to LIBS favours the LIBS technique for this type of analysis. Moreover, the sensitivity of LIBS technique was much higher (100 times higher SBR) than for the WDXRF technique. In case of WDXRF the concentration of titanium in the samples was near to the detection limit of the instrument. The main advantage of LIBS technique is, compared with the WDXRF, its speed, the possibility of local mapping elements onto the sample surface and no restrictions in terms of the geometry of the sample towards the excitation source. In addition, WDXRF analysis requires a relatively large area of the sample with sufficient flatness. The typical analysis time is 10 minutes per sample.

For the analysis of surface density of titanium in the samples using of LA-ICP-TOF-MS was also tested. In the case of LA-ICP-TOF-MS analysis it was possible to detect ⁴⁸Ti and ⁴⁹Ti isotopes with the values of SBR similar to the Ti lines from LIBS. On the other hand, the

1
2
3 precision of analysis was slightly worse to WDXRF (see Table 2) and reproducibility was
4 significantly unsatisfactory. The typical analysis time was similar to WDXRF (10 minutes per
5 sample). A major disadvantage of the technique is the higher operating costs, namely
6 consumption of helium and argon. Since the time needed and the cost of the analysis were
7 higher than in the case of LIBS, we did not continue with the investigation of LA-ICP-TOF-
8 MS analysis.
9

10
11
12
13
14
15 The LOD of titanium was determined according to the definition $3\sigma B/s$, where σB is
16 the standard deviation of the blank (steel sheet without the protective layer containing
17 titanium) and s is the sensitivity determined by the slope of the calibration curve. We
18 determined σB from 12 measurements of blank signal under the same experimental
19 conditions, where the sample was a steel sheet with the surface density of titanium 0 mg m^{-2} .
20 From the device point of view, LIBS provided the lowest LOD 0.008 mg m^{-2} . The low value
21 of LOD indicates that LIBS technique is very sensitive for this type of analysis and the
22 determination of the surface density is possible even for a much lower concentration than 0.2
23 $- 1 \text{ mg m}^{-2}$, which is a range desired by industry.
24
25
26
27
28
29
30
31
32

33 **4 Conclusion**

34
35 The results demonstrate the applicability of LIBS technique for the determination of Ti
36 in ultrathin layers at low concentrations. The proposed method of LIBS analysis eliminates
37 the time-consuming decomposition of the sample and reduces the cost of analysis. Moreover,
38 results from LIBS are consistent with those obtained by the etching method. LIBS is a robust
39 method, with a simple operation and without the use of vacuum or inert gas in the sample
40 chamber. The total time of analysis including data capture and subsequent calculations was
41 less than one minute without the sample preparation. The sensitivity of the LIBS technique is
42 higher than in the case of WDXRF, which provides significantly worse fitted curve (results
43 with more significant error). The advantage of LIBS technique is the speed, the possibility of
44 local mapping of elements and no restrictions in terms of the sample geometry towards the
45 excitation source. LIBS technique represents an interesting and promising application for
46 elemental analysis of ultrathin layers in low concentrations. The results have shown that the
47 compact commercial LIBS system is suitable for fast determination of titanium surface
48 density and in this case even surpasses well-established and sophisticated techniques as
49 WDXRF and LA-ICP-TOF-MS (see Table 3). The applicability verification in the laboratory
50
51
52
53
54
55
56
57
58
59
60

conditions opens the possibility of implementing the LIBS technique in the industry as an instrument for online measurements in the production.

References

- 1 K. Cai, M. Muller, J. Bossert, A. Rechtenbach and K. D. Jandt, *Appl. Surf. Sci.*, 2005, **250**, 252–267.
- 2 Y.L. Jeyachandran, B. Karunagaran, Sa.K. Narayandass, D. Mangalaraj, T.E. Jenkins, P.J. Martin, *Mater. Sci. Eng. A*, 2006, **431**, 277–284.
- 3 I. Shupyk, L. Lavis, J.-M. Jouvard, M.C. Marco de Lucas, S. Bourgeois, F. Herbst, J.-Y. Piquemal, F. Bozon-Verduraz & M. Pilloz, *Appl. Surf. Sci.*, 2009, **255**, 5574–5578.
- 4 M.L. Franquelo, A. Duran, J. Castaing, D. Arquillo, J.L. Perez Rodriguez, *Talanta*, 2012, **89**, 462–469.
- 5 M.B. Chamberlain, R.J. Lederich, *Thin Solid Films*, 1977, **41**(2), 167–172.
- 6 M. Cwil, P. Konarski and J. Ciosek, *Int. J. Mass Spectrom.*, 2007, **263**(1), 54–58.
- 7 S. Meyer, R. Gorges and G. Kreisel, *Thin Solid Films*, 2004, **450**, 276–281.
- 8 B. Hattendorf, J. Pisonero, D. Günther, N. Bordel, *Anal. Chem.*, 2012, **84**(20), 8771–8776.
- 9 K. Novotný, T. Vaculovič, M. Galiová, V. Otruba, V. Kanický, J. Kaiser, M. Liška, O. Samek, R. Malina, K. Páleníková, *Appl. Surf. Sci.*, 2007, **253**, 3834–3842.
- 10 H. Afkhami Ardakani, S. H. Tavassoli, *Spectrochim. Acta, Part B*, 2010, **65**(3), 210–217.
- 11 P. Paris, et al., *Fusion. Eng. Des.*, 2011, **86**, 1125–1128.
- 12 T. Canel, P. Demir, E. Kacar, B. Genc Oztoprak, E. Akman, M. Gunes, A. Demir, *Opt Laser Technol*, 2013, **54**, 257–264.
- 13 W. Wessel, A. Brueckner-Foit, J. Mildner, L. Englert, L. Haag, A. Horn, M. Wollenhaupt and T. Baumert, *Eng. Fract. Mech.*, 2010, **77**, 1874 – 1883.
- 14 H. Wiggensehauser, D. Schaurich and G. Wilsch, *NDT&E Int.*, 1998, **31**(4), 307–313.
- 15 L. Caneve, F. Colao, F. Sarto, V. Spizzichino, M. Vadrucchi, *Spectrochim. Acta, Part B*, 2005, **60**, 1098–1102.
- 16 S. Almagiva, L. Caneve, F. Colao, R. Fantoni, G. Maddaluno, *J. Nucl. Mater.*, 2012, **421**, 73–79.

- 1
2
3 17 V.N. Lednev, S. M. Pershin, A. A. Ionin, S. I. Kudryashov, S. V. Makarov, A. E.
4 Ligachev, A. A. Rudenko, R. A. Chmelnitsky, A. F. Bunkin, *Spectrochim. Acta, Part*
5 *B*, 2013, **88**, 15-19.
6
7
8
9 18 J. Zhang, G. Ma, H. Zhu, J. Xi, Z. Ji, *J. Anal. At. Spectrom.*, 2012, **27**, 1903–1908.
10
11 19 V.D. Kopachevskii, M.A. Krivosheeva, *Refract. Ind. Ceram+*, 2007, **48**(4), 255–258.
12
13 20 R.E. Sturgeon, J.W.H. Lam, A. Saint, *J. Anal. At. Spectrom.*, 2000, **15**, 607–616.
14
15 21 P. Knotek, D. Arsova, E. Vateva, L. Tichy, *J. Optoelectron. Adv. M.*, 2009, **11**, 391-
16 394.
17
18 22 P. Knotek, L. Tichy, *Mater. Res. Bull.*, 2012, **47**, 4246–4251.
19
20 23 J. Vrenegor, R. Noll, V. Sturm, *Spectrochim. Acta, Part B*, 2005, **60**, 1083–1091.
21
22
23
24
25
26
27
28
29
30
31
32
33
34
35
36
37
38
39
40
41
42
43
44
45
46
47
48
49
50
51
52
53
54
55
56
57
58
59
60

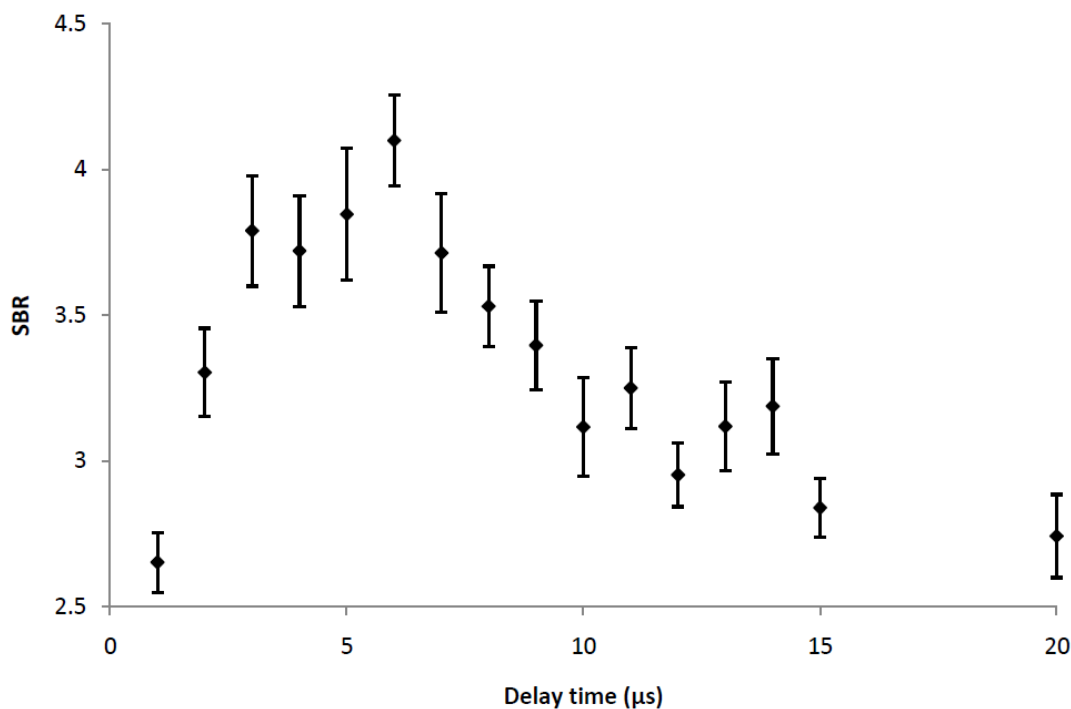


Fig. 1 Signal-to-background ratio (SBR) as a function of delay time. LIBS spectra of sample with Ti surface concentration 0.6285 mg m^{-2} recorded with using next LIBS condition – laser energy 95 mJ (both pulses), spot diameter 800 μm , spectrometer slit width 15 μm , gate width 1 ms.

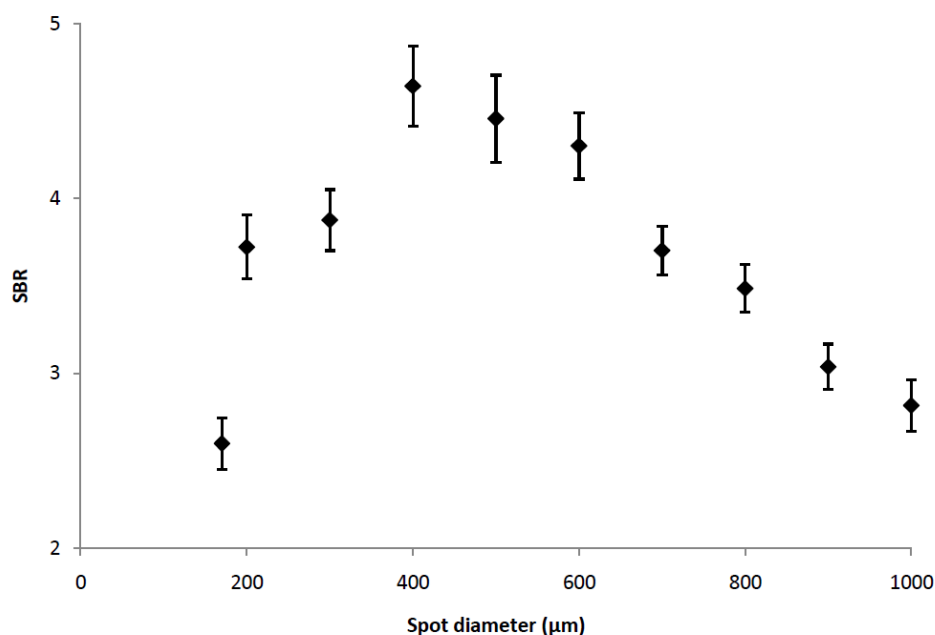


Fig. 2 Signal-to-background ratio (SBR) as a function of spot diameter. LIBS spectra of sample with Ti surface concentration 0.6285 mg m^{-2} recorded with using next LIBS condition – laser energy 105 mJ (both pulses), spectrometer slit width $15 \mu\text{m}$, gate width 1 ms and acquisition delay of $6 \mu\text{s}$.

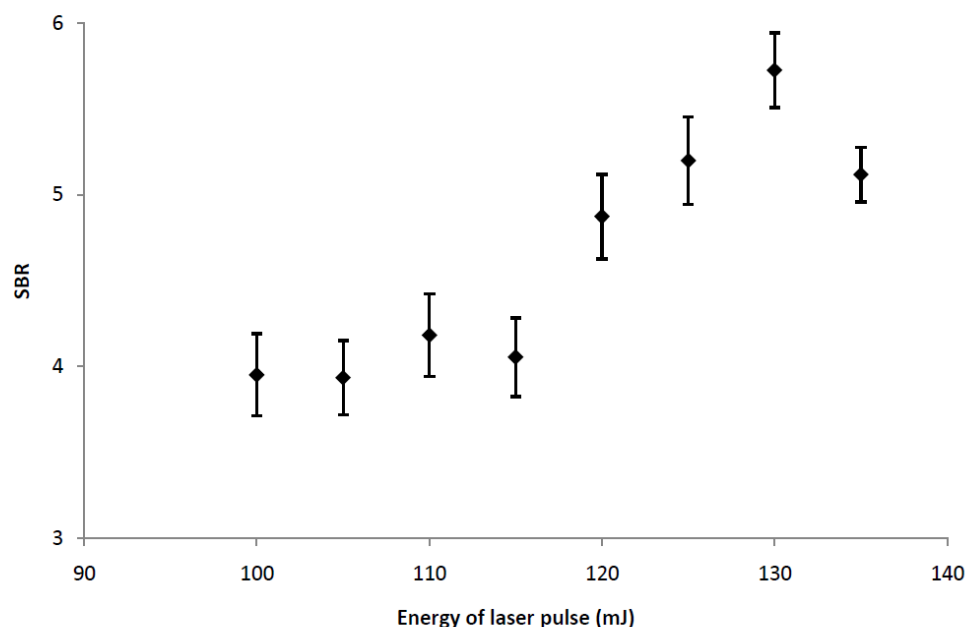


Fig. 3 Signal-to-background ratio (SBR) as a function of energy of laser pulse. LIBS spectra of sample with Ti surface concentration 0.6285 mg m^{-2} recorded with using next LIBS condition – spot diameter $400 \mu\text{m}$, spectrometer slit width $15 \mu\text{m}$, gate width 1 ms and acquisition delay of $6 \mu\text{s}$.

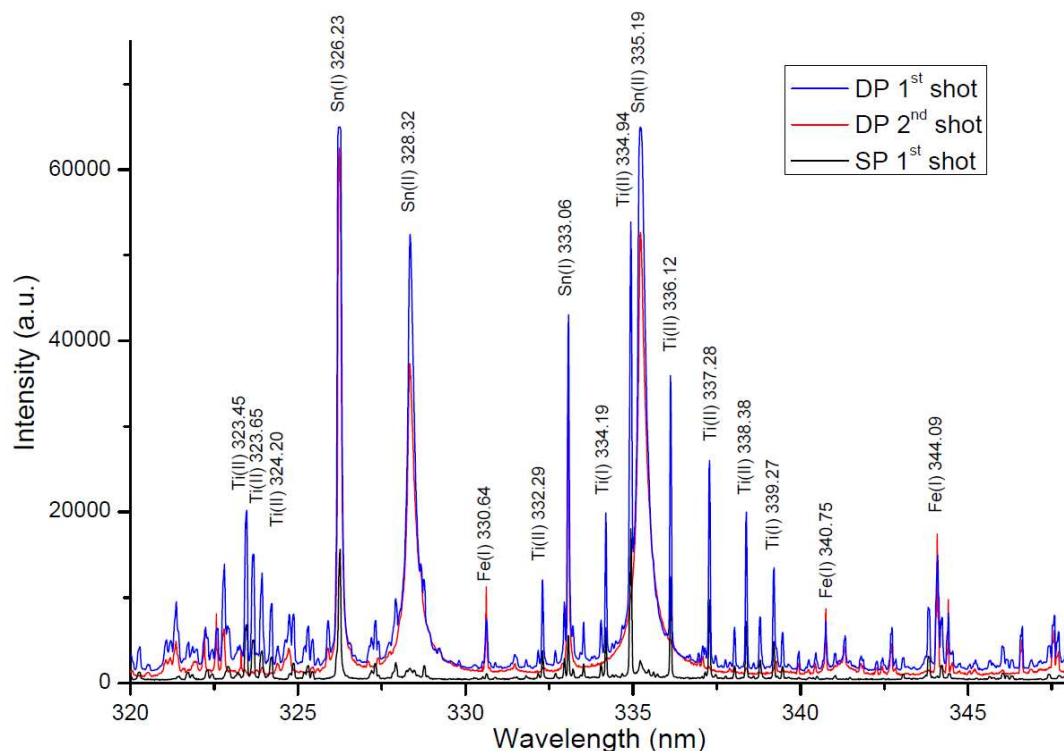


Fig. 4 LIBS spectrum (range of 30 nm) obtained from the sheet sample with the surface concentration 1 mg m^{-2} recorded on LIBS device under the optimal condition - laser energy 105 mJ (both pulses), spot diameter 400 μm , spectrometer slit width 15 μm , gate width 1 ms and acquisition delay of 6 μs .

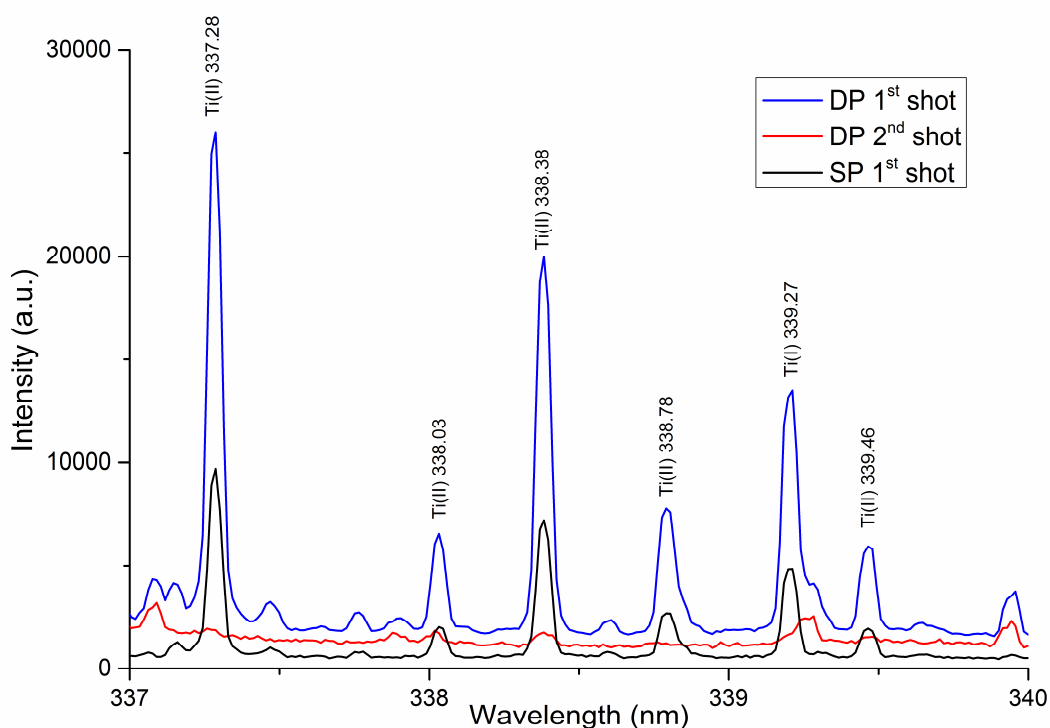


Fig. 5 LIBS spectra of the sheet sample with the surface concentration 1 mg m^{-2} recorded on LIBS device under the optimal condition - laser energy 105 mJ (both pulses), spot diameter 400 μm , spectrometer slit width 15 μm , gate width 1 ms and acquisition delay of 6 μs .

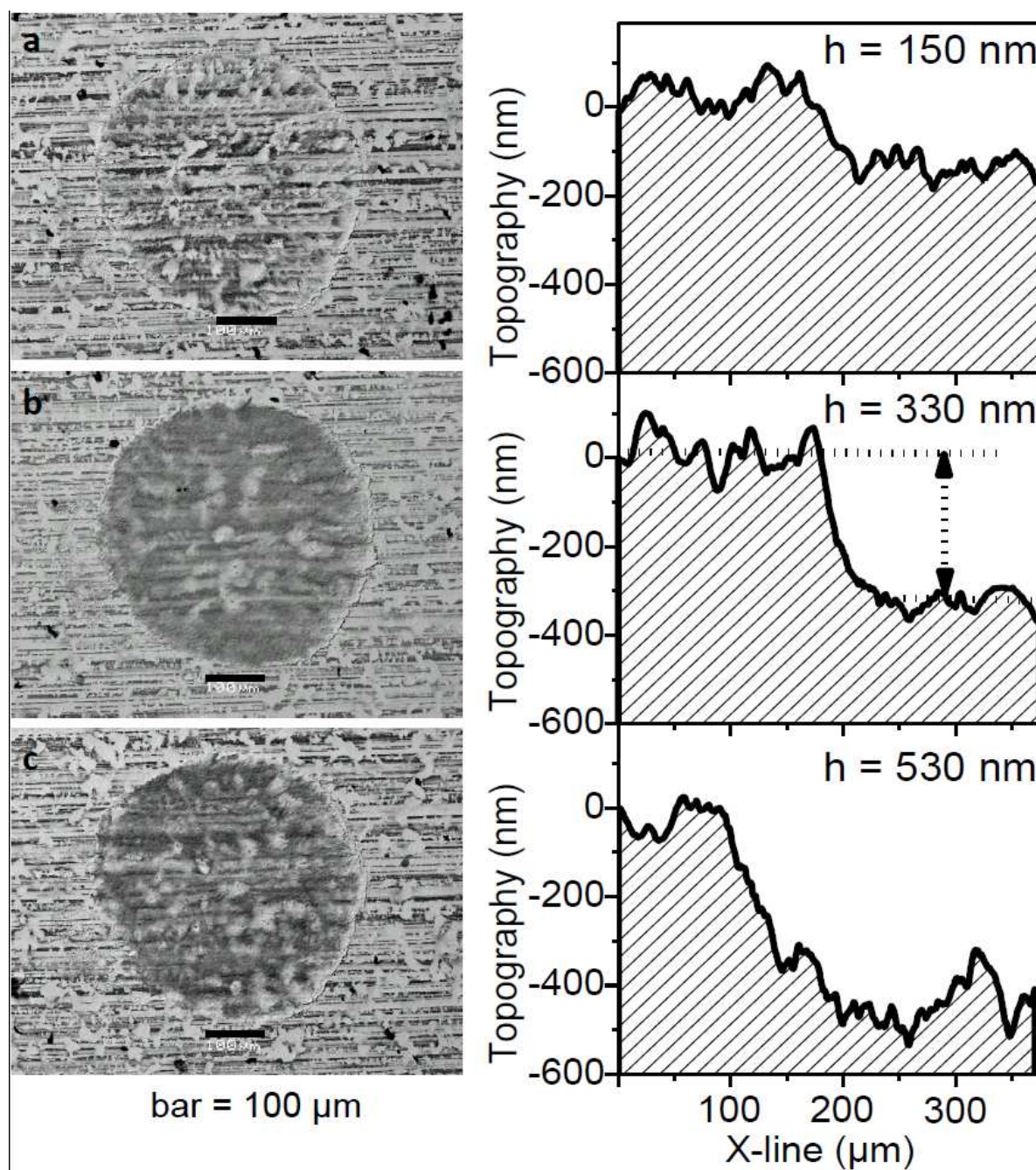


Fig. 6 Scanning Electron Microscopy - Backscattered Electron Imaging (SEM-BSE) visualization of the individual craters obtained by one (a), two (b), and three laser shots (c) on the sheet surface under the optimal condition and corresponding DHM topography of the craters.

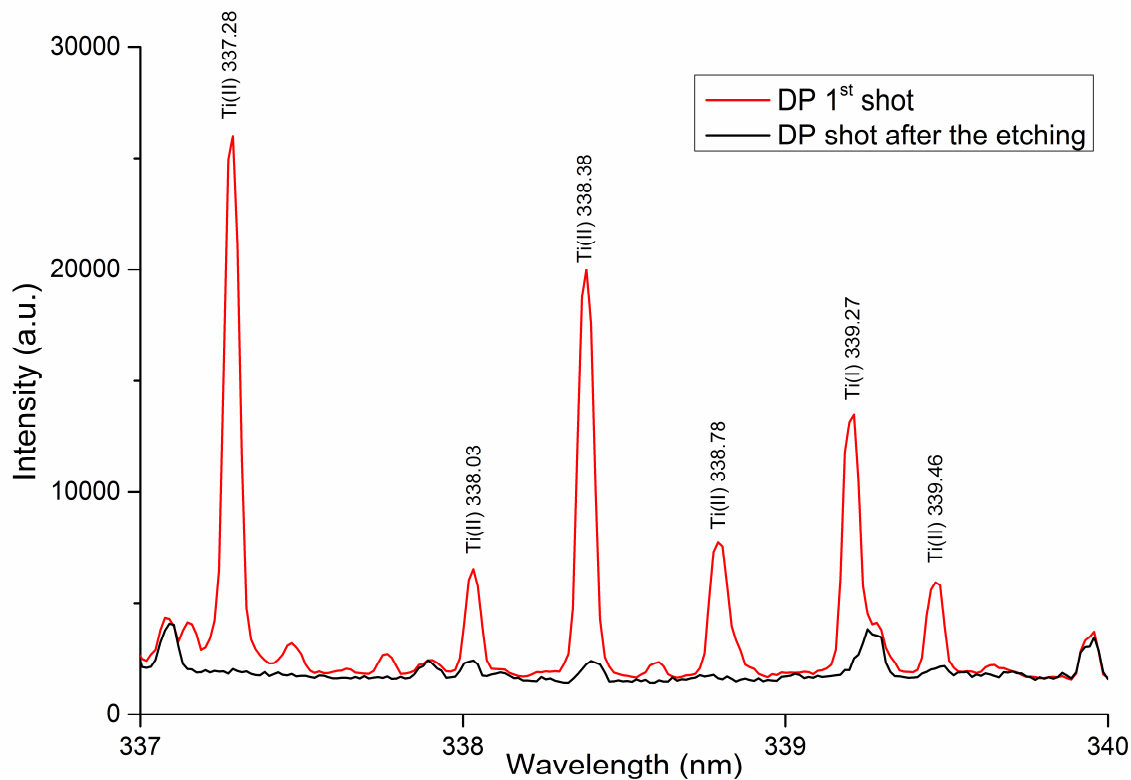


Fig. 7 LIBS spectra of the sheet sample with the surface concentration 1 mg m^{-2} recorded on LIBS device after and before etching under the optimal condition.

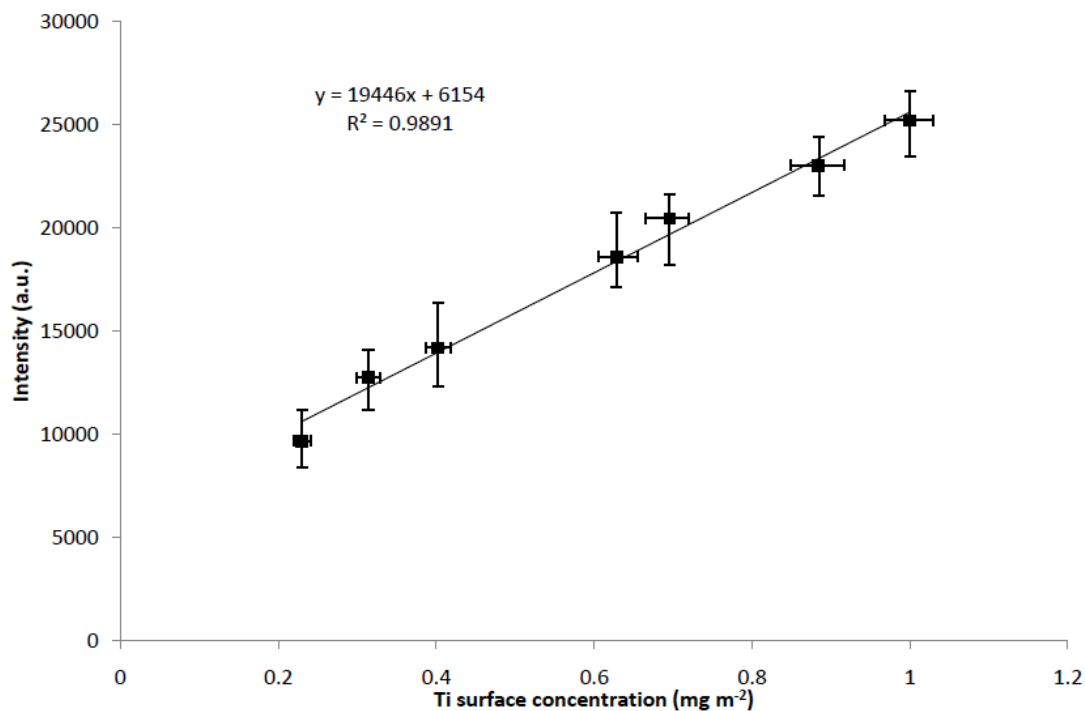


Fig. 8 Calibration curves for Ti I 337.28 nm concentration from LIBS device in double-pulse mode. Error bars show standard deviation from multiple measurements at each value.

Table 1Instrumental operating conditions for LA-ICP-*oa*-TOF-MS.

ICP- <i>oa</i> -TOF-MS	
Instrument	GBC Optimass 8000
Acquisition Time	5 [s]
Replicates	1
Sample Intro Time	1 [s]
Torch X position	11,5 [mm]
Torch Y position	0,8 [mm]
Torch Z position	- 0,4 [mm]
Gasbox nebulizer flow	0,9 l/min
Gasbox plasma flow	12 l/min
Gasbox auxiliary flow	0,8 l/min
Generator set power	1250 [W]
Skimmer	-1250 [V]
Extraction	-1250 [V]
Z1	-450 [V]
Y Mean	-450 [V]
Y Deflection	-4 [V]
Z Lens Mean	-1000 [V]
Z Lens Deflection	-25 [V]
Lens Body	-150 [V]
Fill	-37 [V]
Fill Bias	0,1 [V]
Fill Grid	-2,0 [V]
Pushout Grid	-470 [V]
Pushout Plate	567 [V]
Blanker	200 [V]
Reflectron	600 [V]
Multiplier Gain	2735 [V]
LA	
Spot size	200 [μm]
Laser energy	5 [%]
Laser shot frequency	20 [Hz]
Shutter delay	10 [s]
Scan rate	50 [μm/s]
Helium gas flow	800 [ml/min]

Table 2

Fitted parameters obtained from calibration curves: intercept of the curve (Intr), slope of the curve (β_1), coefficient of determination (R^2), Akaike information criterion (AIC), Mean error of prediction (MEP).

Device	Intr	β_1	R^2	MEP	AIC
LIBS DP	6154	19446	0.9891	6.9×10^5	92
LIBS SP	1787	6412	0.9726	7.3×10^5	94
WDXRF	5.297	228	0.9675	4.01×10^2	31
LA-ICP-TOF-MS	5375	1410	0.8678	7.8×10^5	107
XPS	-1.23	23.96	0.9831	1.9×10^0	3.3

Table 3

Overall comparison of used techniques.

	LIBS	WDXRF	LA-ICP-TOF-MS
Preparation of sample	none	yes	none
Time of analysis	seconds	minutes	minutes
Operating costs	none	low	high
Reproducibility	sufficient	sufficient	unsatisfactory
Sensitivity	high	low	high