

# Analytical Methods

Accepted Manuscript



This is an *Accepted Manuscript*, which has been through the Royal Society of Chemistry peer review process and has been accepted for publication.

*Accepted Manuscripts* are published online shortly after acceptance, before technical editing, formatting and proof reading. Using this free service, authors can make their results available to the community, in citable form, before we publish the edited article. We will replace this *Accepted Manuscript* with the edited and formatted *Advance Article* as soon as it is available.

You can find more information about *Accepted Manuscripts* in the [Information for Authors](#).

Please note that technical editing may introduce minor changes to the text and/or graphics, which may alter content. The journal's standard [Terms & Conditions](#) and the [Ethical guidelines](#) still apply. In no event shall the Royal Society of Chemistry be held responsible for any errors or omissions in this *Accepted Manuscript* or any consequences arising from the use of any information it contains.

# A validated method to measure benzo[*a*]pyrene concentrations in tobacco by high-performance liquid chromatography-fluorescence detection

Cite this: DOI: 10.1039/x0xx00000x

Received 00th January 2012,  
Accepted 00th January 2012

DOI: 10.1039/x0xx00000x

www.rsc.org/

M. Carradus<sup>a†</sup>, K.G. McAdam<sup>a</sup>, J. D. H van Heemst<sup>a</sup>, C. H. A. Goss<sup>a</sup> and C. Wright<sup>a</sup>

This publication describes a validated method suitable for the quantification of Benzo[*a*]Pyrene (B[*a*]P) in tobacco blend and smokeless tobacco products by High-Performance Liquid Chromatography-Fluorescence Detection (HPLC-FLD). Samples were hydrated and extracted with a mixture of hexane and acetone. For the quantification of levels of B[*a*]P the sample extracts were subjected to adsorption chromatography using base-modified silica to remove co-extracted substances. The concentrated final extract was re-dissolved in acetonitrile and analysed by HPLC with fluorescence detection (FLD). B[*a*]P and the internal standard, deuterated B[*a*]P (D<sub>12</sub>-B[*a*]P) were resolved chromatographically. The method was validated and determined to be fit for purpose for the quantification of B[*a*]P in tobacco from 3R4F Kentucky reference cigarettes, a flue-cured Virginia cigarette tobacco blend containing 10% air-cured Burley tobacco, and a Tanzanian dark fire-cured cigarette blend. The method was also validated for smokeless tobacco products including commercially available dry snuff, soft pellet tobacco and pouched snus products over the concentration range of 0.38 ng/g to 150 ng/g, based on extraction of a 0.5 - 2 g aliquot of sample. The measurement uncertainty at a confidence interval of approximately 95% was estimated from data generated by three analysts using two instruments on three separate occasions using matrix (pouched snus) fortification experiments. The expanded uncertainty of the method was ±21.3% of the mean B[*a*]P concentration.

## Introduction

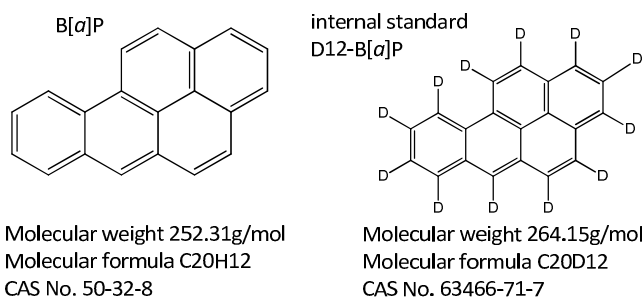
There are a number of current developments in the area of tobacco product regulation that require validated analytical methods for quantification of toxicants in tobacco and cigarette smoke. For example, the World Health Organisation (WHO) Study Group on Tobacco Product Regulation (TobReg) has recommended limits on the benzo[*a*]pyrene (B[*a*]P) and TSNA content of smokeless tobacco products (STPs).<sup>1</sup> The same group has also recommended disclosure of the mainstream smoke emissions of 18 toxicants, and mandated lowering of the emissions of 9 of these.<sup>2</sup> In the USA the Food and Drug Administration (FDA) has identified over 90 Harmful and Potentially Harmful Constituents (HPHCs) in tobacco products and tobacco smoke,<sup>3</sup> and currently requires annual reporting of a subset of these in tobacco products and cigarette smoke emissions.<sup>4</sup> B[*a*]P is one of the priority compounds highlighted by TobReg<sup>1</sup> and the FDA,<sup>3</sup> and TobReg has recommended a regulatory limit of 5ng/g dry

weight of smokeless tobacco,<sup>1</sup> based on approximate levels of quantification of currently available analytical methods. Benzo[*a*]pyrene is also a toxicant identified in smokeless tobacco manufacturer standards, Gothiatek® (a quality established by Swedish Match),<sup>5</sup> and the levels established by ESTOC.<sup>6</sup> Validated analytical methods are an essential foundation for the effective measurement and potential future regulation of toxicant levels in tobacco products.

B[*a*]P is a Polycyclic Aromatic Hydrocarbon (PAH) and is mainly formed by the incomplete combustion or pyrolysis of organic compounds.<sup>7</sup> Approximately 100 PAHs have been detected in tobacco<sup>8</sup> and they usually occur as complex mixtures rather than individual compounds. PAH compounds are predominately formed when organic materials are burned at temperatures in the range 500-700°C, as in the combustion of fossil fuels and cigarettes.<sup>7</sup> PAHs may also be introduced into tobacco during leaf growth from

environmental sources and the curing process.<sup>9</sup> STPs contain variable levels of PAH compounds depending on the type of tobacco used in the product. For instance fire-cured tobaccos, which may contain elevated levels of PAHs, are commonly used in snuffs and certain pellet tobacco products.<sup>9</sup>

PAHs consist of condensed aromatic ring structures, are lipophilic compounds and are readily absorbed by inhalation, ingestion and dermal exposure.<sup>7</sup> The most widely studied PAH is B[a]P, as it is the only PAH identified by IARC as a "known human carcinogen".<sup>10</sup> Data obtained from rat tissue samples have indicated that B[a]P is rapidly distributed throughout the body and is metabolised by the enzyme cytochrome P450 to a reactive epoxide, B[a]P-7,8-diol-9,10-epoxide. The epoxide metabolite is thought to be responsible for the carcinogenic properties of B[a]P.<sup>11,12</sup> The structures of the target compound, B[a]P and its deuterated analogue B[a]P (D<sub>12</sub>-B[a]P), used as internal standard in this study, are shown in Figure 1.



**Figure 1** Chemical structures of B(a)P and its deuterated analogue

There are a number of published methods for the quantification of B[a]P and other PAHs including their measurement in narghile waterpipe tobacco smoke<sup>13</sup> and in mainstream cigarette smoke, using Gas Chromatography-Mass Spectrometry (GC-MS);<sup>14-16</sup> and of these, CRM 58<sup>16</sup> is the only method that has been subjected to extensive inter-laboratory testing and assessment of repeatability and reproducibility. A method for quantification of PAHs (including B[a]P) in mainstream tobacco smoke has been developed using Gas Chromatography-High Resolution Mass Spectrometry (GC-HRMS).<sup>17</sup> Alternative techniques in the literature for quantification of PAHs in mainstream cigarette smoke include HPLC-FLD<sup>18-21</sup> and HPLC-APPI-MS/MS methods.<sup>22</sup>

In contrast to tobacco smoke, there are far fewer published methods for B[a]P or PAHs in smokeless tobacco products. Some smokeless tobacco product manufacturers have been operating to Gothiatek® or ESTOC standards for a number of years and therefore unpublished analytical methods are presumably available for this analyte in these matrices. Published methodologies for the determination of 23 PAH compounds in STPs<sup>23</sup> and for 21 PAH compounds in STPs<sup>9</sup> focus on GC-MS approaches.

HPLC-FLD has been used to determine PAH levels in a similar matrix, tea,<sup>24</sup> with levels of sensitivity allowing an LOQ of 0.35 ng/g for B[a]P to be achieved. The LOQ of 0.38ng/g for B[a]P in tobacco is considerably below the commonly available LOQ of 5ng/g discussed by TobReg,<sup>1</sup> and potentially represents a significant step forward in analytical capability over some of the currently employed methods. The current paper therefore describes the development and validation of a high-performance liquid chromatography-fluorescence detection method for the quantification of B[a]P in both tobacco blends and smokeless tobacco products. The method has been validated in accordance with international standards and guidelines (ICH,<sup>25-27</sup> IUPAC,<sup>28,29</sup>

ISO,<sup>30</sup> DG SANCO<sup>31</sup> and FDA<sup>32</sup>). The validation process included a series of experiments designed to test the performance of the method against defined acceptance criteria including precision, expressed as residual standard deviation (RSD) at the LOQ of <20%.<sup>31,32</sup> The matrices selected for validation included cigarette tobaccos and STPs with low endogenous B[a]P levels such as commercially available pouched snus, a Swedish-sourced soft pellet STP, and a US-style cigarette tobacco blend containing fire-cured, air-cured and oriental blends. STPs and cigarette tobaccos with high endogenous B[a]P concentration such as commercially available dry snuff product and dark Tanzanian fire-cured tobacco were also examined. Validation of the method for a range of tobacco products ensured method robustness and reproducibility for matrices containing low to high endogenous B[a]P levels.

## Experimental

**Samples. Reference cigarette tobacco blend.** Tobacco from a Kentucky Reference (3R4F) cigarette was selected as a low PAH content test sample. It has traditional US-style tobacco blend, with a composition of 32.5% flue-cured Virginia tobacco, 19.9% Burley, 1.2% Maryland and 11.1% Oriental tobacco, 27.2% reconstituted tobacco (Schweitzer Process), glycerin 2.8% and sugar 5.3%.<sup>33</sup> **Modified Virginia cigarette blend.** An internal reference blend comprising 90% flue-cured Virginia cigarette tobacco, with 10% air-cured Burley tobacco was also selected as a mid-level PAH test sample. **Tanzanian dark fire-cured tobacco blend.** Tanzanian dark fire-cured tobacco, of the type used in pipe tobacco blends and dry snuff was chosen as a high PAH test-sample.<sup>34</sup> Dark fire-cured tobaccos are produced by curing tobacco in ventilated barns with open fires allowing smoke to come into contact with the tobacco during the drying process – this leads to relatively high PAH contents.

**Smokeless Tobacco Products (STP). Soft tobacco pellets.** A commercial product used for method validation was Oliver Twist; it is a tobacco pellet comprising a cylinder of tobacco leaf and flavourings with a moisture content of 5-20%.<sup>9</sup> The sample selected was sourced from Scandinavia, in contrast to the US-sourced product analysed previously.<sup>9</sup> **Snus.** Commercial portioned snus (Granit White and Lucky Strike Original) were used for method validation purposes. Snus is a smokeless tobacco product used in Scandinavia and is manufactured from heated and processed tobacco. Typical moisture content is greater than 40%.<sup>9</sup> **Dry Snuff.** The commercial product Square was used in the method validation. It is a light brown powder with a typical moisture content of less than 10%.<sup>9</sup> As Dry snuff contains a significant proportion of fire-cured tobacco it is relatively high in PAH content. Samples were selected in order to demonstrate method suitability for a range of tobacco blends and STPs.

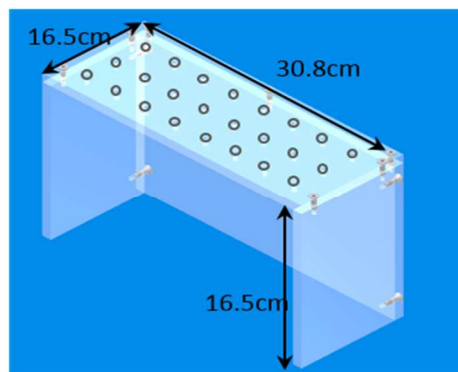
## Reagents and materials

A B[a]P solution with a certified concentration of 1000 µg/mL in acetone (QMX Laboratories Ltd, Thaxted, UK) and D<sub>12</sub>-B[a]P (≥98% isotopic purity) was purchased from Sigma Aldrich (Gillingham, UK). Silica gel 60Å chromatography grade (70-200µm) and potassium hydroxide pellets (Fisher Scientific; Loughborough, UK) were used for the preparation of base-modified silica used during the method validation process. Methanol (high-performance liquid chromatography (HPLC) grade) and acetonitrile (HPLC fluorescence grade) with a purity of >99.9%, were purchased from Fisher Scientific (Loughborough, UK) and used in the preparation of matrix samples and for the HPLC mobile phase. Water from an Elga Process Water (High Wycombe, UK) deionised water generator (minimum quality 18.2 MΩ cm<sup>-1</sup>) was used.

## Equipment

Cigarette tobacco blends were ground to 1mm using a Retsch ZM200 mill and the soft pellet tobacco (Oliver Twist) cryomilled prior to extraction using a Retsch Cryomill (Retsch UK Ltd.; Hope, UK). All liquid transfers were made with calibrated pipettes and grade B volumetric glassware. All laboratory consumables were supplied by Fisher Scientific (Loughborough, UK). Sample extraction was carried out using a flat-bed shaker (IKA®-Werke; Staufen, Germany) and a Rotanta 460 centrifuge (Hettich; Tuttlingen, Germany). For production of the base-modified silica a rotary evaporator (Buchi, Oldham, UK) was used. Isolute 70 mL reservoir pack, Isolute 27 mm frits and pre-packed base-modified silica 70 mL/10 g cartridges (Biotage; Uppsala, Sweden).

A custom made manifold was used to collect eluent after sample clean up. The manifold was constructed using Lexan® polycarbonate (Gilbert Curry Industrial Plastics; Coventry, UK) (Figure 2) to enable it to be placed over a Nalgene™ 24 x 30 mm tube rack holder containing 60 mL glass vials (Fisher Scientific; Loughborough, UK). Promega™ One-Way Luer-Lok™ stopcocks (Promega™ UK; Southampton, UK) were inserted into the drilled holes in the manifold to support the 70mL/ 10g potassium silicate cartridge and to control eluent flow.



**Figure 2** Dimensions of the custom-made manifold

Turbopap sample concentrators (Biotage; Uppsala, Sweden) with a tube holder for 60 mL vials were used to concentrate the sample extracts. Two Agilent 1200 series HPLC systems (instruments 1 and 2) were coupled to Agilent 1200 Infinity fluorescence detectors and chromatographic separation performed using a Zorbax Eclipse Plus PAH column (250 mm × 2.1 mm with a 5 μm particle size; Agilent Technologies). Data were processed with Agilent Chemstation software (version B.04.03). A Cary 5 double beam spectrophotometer was used for the determination of water in tobacco by near infra-red spectroscopy (Agilent Technologies; Wokingham, UK).

### Base-modified silica cartridges

To a 3000 mL round bottomed flask, 500 mL of methanol and 168 g potassium hydroxide were added and the flask attached to a rotary evaporator. The flask was submerged in a water bath and cooled to ambient temperature as the reaction is exothermic. When the potassium hydroxide pellets had dissolved in the methanol, 300 g of silica gel were added with continuous stirring followed by a further addition of 500 mL of methanol. The temperature of the water bath was increased to 40°C and left to mix for 30 minutes. The methanol was decanted from the flask and further 500 mL methanol added and then left to mix for a further 30 minutes; this was repeated for a further two methanol washes. The excess methanol was decanted

off and the slurry poured into a chemical resistant tray and left to dry overnight in a fume hood. Free flowing base-modified silica powder was obtained. A frit was placed in the bottom of a 70 mL reservoir cartridge followed by addition of  $10 \pm 0.3$  g base-modified silica and a frit placed on top of the silica. For routine laboratory use custom made base-modified silica cartridges were produced by Biotage (Uppsala, Sweden).

High-performance liquid chromatography-fluorescence detection conditions. HPLC separation was performed at a temperature of 35°C and run time of 35 min. The injection volume was 10 μL and the eluent flow rate 0.5 mL/min. Mobile phases used were deionised water (eluent A) and acetonitrile (eluent B). Gradient profiles are shown in Table 1. Excitation wavelength was  $290 \pm 3$  nm and emission wavelength was  $440 \pm 3$  nm.

**Table 1** High-performance liquid chromatography gradient profiles

Time (min)	Flow (mL/min)	Eluent A (deionised water) (%)	Eluent B (acetonitrile) (%)
0	0.500	20.0	80.0
20.0	0.500	10.0	90.0
20.5	0.500	0	100.0
30.0	0.500	0	100.0
30.1	0.500	0	80.0
35.0	0.500	20.0	80.0

### Standard solutions

For the internal standard stock solution,  $10 \pm 0.1$  mg of D<sub>12</sub>-B[a]P were weighed into a 20 mL amber glass vial. After addition of 5–7 mL acetonitrile, the vial was capped and sonicated for 5 min at  $30 \pm 5^\circ\text{C}$ . The solution was cooled to room temperature, quantitatively transferred to an amber glass 10 mL volumetric flask and made up to volume with acetonitrile (final D<sub>12</sub> B[a]P stock solution concentration 1000 ng/μL).

The working-standard solutions were prepared by transferring 100 μL D<sub>12</sub>-B[a]P stock solution to a 100 mL or a 1000 mL volumetric flask and adding acetonitrile to make up to volume (concentrations 1000 ng/mL (solution 1) and 100 ng/mL (solution 2)).

For the B[a]P stock standard solution, 0.25 mL of 1000 μg/mL B[a]P in acetone was transferred from an ampoule to a 100 mL volumetric flask and made up to volume with acetonitrile (concentration 2500 ng/mL; solution 3). A volume of 10 mL B[a]P stock solution was transferred to a 50 mL volumetric flask and made up to volume with acetonitrile (concentration 500 ng/mL) to make the working standard stock solution (solution 4). Standard solutions were stored at  $-20 \pm 2^\circ\text{C}$ .

### Calibration solutions

Nine calibration standard solutions in the concentration range of 0.25 to 25 ng/mL were prepared from D<sub>12</sub>-B[a]P (solution 1) and B[a]P (solution 4). A volume of 250 μL of D<sub>12</sub>-B[a]P (solution 1) was transferred to 50 mL volumetric flasks to give a final concentration of 5 ng/mL internal standard in each calibration solution. Aliquots of 500 ng/mL of B[a]P (solution 4) were added and made up to volume with acetonitrile. The calibration standards were stored at  $-20 \pm 2^\circ\text{C}$  and were stable for up to 6 months.

### Linearity and statistical evaluation

First order linear models using ANOVA were performed using Minitab (version 16) statistical software (Minitab Inc., State College, Pennsylvania, USA). The calibration linearity was evaluated for the B[a]P working standard solutions over the entire calibration range. Tests for statistical significance were set at the 95% confidence



level. Samples were analysed in triplicate on three separate occasions. A linear correlation fit was applied to the response ratio (the ratio of the B[a]P peak area to the internal-standard peak area), as a function of the analyte concentration ratio (the ratio of B[a]P concentration to the internal-standard concentration). The linear regressions of the scatter plots for the replicates were assessed. The calibration range for the method was determined by the upper and lower concentrations of B[a]P in solvent at which acceptable precision, accuracy and linearity were achieved. The linearity of results for standard fortified matrix extracts were compared with a calibration curve of standards in pure solvent for the assessment of potential matrix effects.

In the absence of a blank matrix, the detection limit (LOD) of the method was estimated from calibration curves as

$LOD = (3.3\sigma)/\text{slope}$ , where  $\sigma$  = standard deviation of the response.<sup>27</sup> The lower limit of quantification of the method was determined by completing six replicate injections of the lowest level of B[a]P standard. The target precision at the LOQ was set at a relative standard deviation of 20% in accordance with DG SANCO and FDA guidelines.<sup>31,32</sup>

### Stability

The stability of B[a]P working-standard solutions was assessed by comparison of the measured concentration of B[a]P in freshly prepared solutions with solutions stored at ambient conditions for 4 days. In addition, the stability of standards in solvent stored at  $-20 \pm 2^\circ\text{C}$  was assessed periodically over 15 weeks. The stability of modified-Virginia blend sample extracts (n=5) stored at  $-20 \pm 2^\circ\text{C}$  was assessed on Day 0 and on Day 30 by comparison with a freshly made standard solution.

### Tobacco hydration

A pre-extraction hydration step of a similar dry leaf matrix (tea) was reported to improve the extraction efficiency of pesticide residues from black and green tea samples.<sup>35</sup> Experiments were therefore carried out using tobacco from 3R4F Reference cigarettes to determine the effect of hydration on B[a]P extraction efficiencies. A 3R4F cigarette tobacco was extracted 1) without hydration; 2) at a ratio of 1:1 water:tobacco for 18 hours/overnight at in at  $5 \pm 2^\circ\text{C}$ , and 3) at a ratio of 4:1 water:tobacco with an hour hydration at ambient temperature. In addition, the efficiency of extraction of B[a]P from STP Oliver Twist was evaluated without hydration and with hydration at a ratio of 1:1 water: tobacco for 18 hours/overnight at  $5 \pm 2^\circ\text{C}$ .

### Sample extraction

Because the method was applied to a wide range of tobacco products with B[a]P content ranging from 0.38ng/g to 150ng/g and in order to

B[a]P content, the mass of sample extracted was matched to sample type. For snus samples a mass of 2g was extracted. For samples containing high proportions of fire-cured tobacco, 0.5g was extracted and the extracts were diluted prior to analysis. For other samples a mass of 1g was extracted. Extraction was conducted in three stages in order to ensure exhaustive recovery of the incurred B[a]P and thus quantitative determination.

The mass of sample was varied according to the matrix (Table 2). For STPs with low expected endogenous B[a]P concentration (for example Granit White, Lucky Strike Original snus) two pouches equivalent to a mass of 2.0g were extracted. For tobacco blend and STPs in which high levels of B[a]P were expected (for example products containing a high proportion of fire-cured tobacco, such as Square dry snuff) a lower sample mass was extracted (0.5g) to ensure that B[a]P responses were within the method calibration limits. For all other samples 1g of sample was extracted. Samples were hydrated at a ratio of 1:1 water: tobacco and then refrigerated overnight (18 hours) to equilibrate. Granit White and Lucky Strike Original snus were stored in the freezer and defrosted prior to extraction. Optimal extraction efficiency of B[a]P was obtained for samples with a final moisture content of 42-57%. Hydration was required for matrices with low moisture content, but additional hydration of Granit White and Lucky Strike Original snus was determined to be unnecessary due to high intrinsic moisture levels in the product (>40%).

In order to remain within the calibration range, samples containing very high B[a]P levels, including the Tanzanian dark fire-cured tobacco and Square dry snuff samples, were fortified with 150  $\mu\text{L}$  of solution 1, equivalent to 150ng  $D_{12}$ -B[a]P. A ten-fold dilution was applied at the end of the extraction step. For all other matrices (including unknown samples) with expected low to medium B[a]P concentrations, 15 ng of  $D_{12}$ -B[a]P was added (150  $\mu\text{L}$  of solution 2) and samples were analysed without dilution. The mass of unknown samples was adjusted where necessary to ensure that the B[a]P concentration in the final extract was within the calibration limits.

Two extraction approaches were adopted. For mixtures with low intrinsic moisture content the following approach was adopted. After the addition of  $D_{12}$ -B[a]P, samples were equilibrated for 30 minutes at room temperature prior to extraction. The samples were extracted with 25 mL 90:10 (v/v) hexane:acetone for 30 min on a reciprocating shaker at 180 rpm and centrifuged at 4600 rpm for 5 min. The supernatant was decanted into a 60 mL amber vial. The process was repeated two more times to collect the cumulative sample extract. The extract volume was reduced between extraction steps using a Turbovap sample concentrator to obtain a final extract volume of 1–5 mL.

Two snus pouches were fortified with  $D_{12}$ -B[a]P and left to equilibrate at ambient temperature for 30 min. Due to the high

Table 2 Hydration optimisation conditions and approximate moisture content determined by near infrared spectroscopy.<sup>36</sup>

Sample	Moisture content (%)	Mean (SD) mass of matrix required (g)	Volume of water added (mL)	Final moisture content (%)
Kentucky reference cigarette (3R4F)	10.8	1.0 $\pm$ 0.1	1.0	55.4
Modified Virginia blend	11.7	0.5 $\pm$ 0.1	0.5	55.9
Tanzanian fire-cured tobacco	10.8	0.5 $\pm$ 0.1	0.5	55.4
Square dry snuff	8.1	0.5 $\pm$ 0.1	0.5	54.1
Oliver Twist pellet tobacco	13.1	1.0 $\pm$ 0.1	1.0	56.5
Lucky Strike Original snus (two portions)	49.3	2.0 $\pm$ 0.3	0	49.3
Granit White snus (two portions)	42.2	2.0 $\pm$ 0.3	0	42.3

avoid potential non-linearity of response for samples with very high intrinsic moisture content (>40%) a higher proportion of polar

aprotic solvent was required for the initial extraction of pouched snus to ensure optimal

extraction efficiency. The extraction efficiencies for B[a]P in pouched snus were 10% higher when a 50:50 (v/v) hexane: acetone solvent system was used for the first extraction step. For blend and the other STPs, extraction efficiencies when using a higher proportion of polar aprotic solvent for initial extraction were reduced with a 14% reduction in extraction efficiency observed for modified Virginia blend). Therefore, two whole snus pouches were first extracted with 50:50 (v/v) hexane:acetone for 30 min on a reciprocating shaker at 180 rpm before centrifugation and concentration, this was then followed by two further extractions with 25 mL 90:10 (v/v) hexane:acetone as described for the other tobacco samples.

### Sample clean-up

Each supernatant was transferred to a hexane pre-conditioned base-modified 70 mL/10 g potassium silicate cartridge. The eluent was collected in a 60 mL vial. B[a]P was further eluted from the cartridge with an additional two volumes of 25 mL hexane. The total eluent volume (50–55 mL) was reduced by careful evaporation of the solvent under a flow of nitrogen to just before the point of dryness. The sample was reconstituted in 3 mL acetonitrile and sonicated for 40 min at 25°C. Dry snuff and fire-cured tobacco were diluted ten-fold prior to analysis because screening measurements indicated that these samples contained B[a]P levels above the upper calibration range.

### Standard fortified matrix calibration

Fortification standard solutions in acetonitrile were prepared at three levels: low, medium and high (Table 3). Calibration solutions in matrix were prepared as follows: for the low and medium-level fortification solutions, different volumes of 500 ng/mL B[a]P working standard stock (solution 4) and for the high fortification standard solution a B[a]P stock of 2500 ng/mL (solution 3) was used (Table 3).

Standard fortified matrix samples were prepared (Table 4) for all tobacco blends and STPs. The final volume of fortified B[a]P matrix samples was 500 µL after the addition of 400µL of matrix extract.

**Table 3** B[a]P fortification standard solutions in acetonitrile

Fortification standard	B[a]P standard Concentration (ng/mL)	B[a]P standard volumes (mL)	Volume (mL)	Fortification standard concentration (ng/mL)
Low	500	1	50	10
Medium	500	10	50	100
High	2,500	10	25	1,000

**Table 4** Levels of fortification of matrix with B[a]P standard

Calibration level	Fortification standard concentration (ng/mL)	Volume of fortification standard (µL)	Acetonitrile (µL)	Target fortification (ng/mL)
0	-	0	100	0
1	10	12.5	87.5	0.250
2	10	25.0	75.0	0.499
3	10	50.0	50.0	0.999
4	100	12.5	87.5	2.50
5	100	25.0	75.0	4.99
6	100	50.0	50.0	9.99
7	1,000	10.0	90.0	20.0

The matrix extract for each sample was produced after drying ten extracts each with a volume of 50–55 mL after clean-up to just the point of dryness and reconstitution in 3 mL acetonitrile. The ten samples therefore gave a total extract volume of 30 mL (10 x 3 mL) which was used to produce the standard fortified matrix at each calibration level (n=4) with two calibration curves produced on each HPLC system (instrument 1 and 2). Unfortified matrix samples were assessed to determine endogenous concentrations of B[a]P as a control.

### Accuracy

Accuracy (*i.e.* closeness of agreement between the result of a measurement and the true value) of the method was assessed by calculation of the ratio between the determined and nominal concentrations. The accuracy was determined for standards in solvent and for each of the fortified matrix extracts after subtraction of the endogenous level. Acceptable accuracies were 50 – 120 % for an analyte concentration of < 1 ng/g, 70 – 110 %, for the range of 1 – 10 ng/g and 80 – 110 % for B[a]P concentration > 10 ng/g.<sup>37</sup>

Repeat extractions of unfortified Granit White snus matrix were analysed (n= 16) to assess the accuracy of the method for samples close to the LOQ (<1 ng/g). The mean measured endogenous concentration of 2.20 ng/g DWB, (precision of 12.2% (n=16)) was subtracted from B[a]P fortified Granit White snus samples used to determine the accuracy at the three levels of matrix fortification (low, medium and high) with six replicates per level.

### Precision

The precision of the method (*i.e.* the closeness of replicate results) was calculated as the ratio of the standard deviation to the mean corrected concentration of six samples at each fortification level (n=18 samples) *i.e.* the relative standard deviation.

### Intermediate Precision

The intermediate precision (*i.e.* within-laboratory variations arising from different analysts and instruments) was calculated from the measurements made by three different operators using two instruments (instruments 1 and 2) on three separate occasions. The medium fortification standard solution was prepared in solvent (acetonitrile) (Table 4) and used to fortify Granit White extracts. Twenty four Granit White pouches were fortified with 15 ng of internal standard D<sub>12</sub>-B[a]P (150 µL of solution 2) prior to extraction. To six replicates of each fortification level (unfortified, low, medium and high) the following volumes of B[a]P medium fortification standard 100 ng/mL (Table 3) were added: 0 µL, 30 µL, 210 µL and 450 µL equivalent to 0 ng, 3 ng, 21 ng and 45 ng respectively. Unfortified samples were assessed to determine endogenous concentrations of B[a]P as a control.

### Uncertainty of measurement

Standard uncertainty of measurement (*u*) (*i.e.* the parameter characterising the dispersion of the values, was estimated from the mean ( $\bar{x}$ ) and standard deviation (*s*) of repeated measurements (*n*)). The mean of the repeated readings,  $\bar{x}$  was calculated using the formula (1) and estimated standard deviation (2)

$$\bar{x} = \sum_{i=1}^n \frac{x}{n} \quad (1); \quad s = \sqrt{\frac{\sum_{i=1}^n (x_i - \bar{x})^2}{(n-1)}} \quad (2)$$

From these values the estimated standard uncertainty of the mean, *u* was calculated (3) and then the combined standard

uncertainty ( $u_c$ ) calculated by squaring the measurement standard uncertainties, adding them all together, and then taking the square root of the total (4).<sup>38</sup>

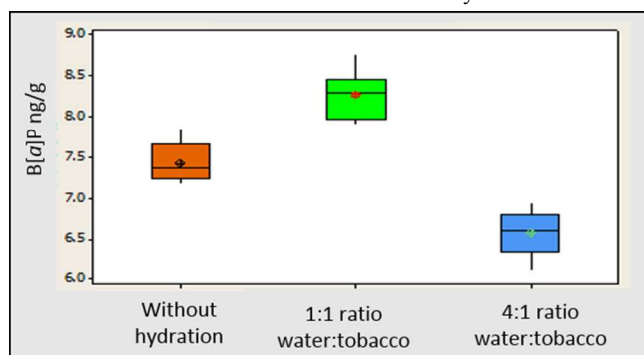
$$u = \frac{s}{\sqrt{n}} \quad (3) \quad u_c = \sqrt{a^2 + b^2 + c^2 \dots} \quad (4)$$

The expanded uncertainty ( $U$ ) (*i.e.* the quantity defining an interval around a measured value encompassing a large fraction of the distributed values was calculated using the formula  $U = ku_c$  (5) where  $k$  is the coverage factor. When  $k=2$ , the values are expected to fall within two standard deviations of the mean to provide an approximate level of confidence of 95%.<sup>32, 38</sup>

## Results and discussion

### Tobacco hydration

Extraction efficiency for B[a]P was 11% higher for 3R4F cigarette blend and 9.4% higher for STP Oliver Twist with tobacco matrix hydration at a ratio of 1:1 water: tobacco (18 hours/overnight in a refrigerator) compared to non-hydrated matrix (Figure 3). Findings are consistent with published data for pesticide residue extraction in tea.<sup>35</sup> At a hydration ratio of 4:1 water: tobacco and equilibration time of one hour, the extraction efficiency of B[a]P was 9.6% lower than the B[a]P concentration determined in non-hydrated samples and 20% lower than in extracts obtained from 3R4F matrix hydrated at a 1:1 water: tobacco ratio. Preliminary data indicated that over hydration at a ratio of 4:1 water: tobacco significantly reduced the extraction efficiency for 3R4F compared to a 1:1 water: tobacco ratio. It is however worth noting the differences in the equilibration time will also influence the extraction efficiency.



**Figure 3** Boxplot of B[a]P concentrations in 3R4F Reference Tobacco extract expressed on a Wet Weight Basis (WWB) in ng/g (1) without hydration (2) 1:1 ratio of water: tobacco hydration and equilibration at  $5 \pm 2^\circ\text{C}$  overnight (3) 4:1 water: tobacco hydration with equilibration for one hour at  $22 \pm 2^\circ\text{C}$ .

### Sample selectivity

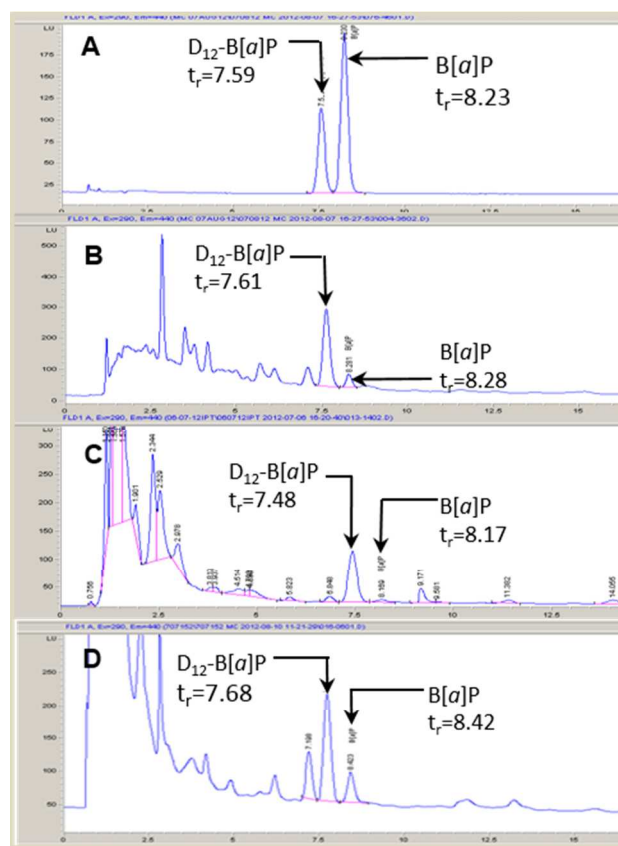
B[a]P and D<sub>12</sub>-B[a]P were chromatographically separated (Figure 4) and baseline resolved. Assessment of sample matrices with and without fortification with D<sub>12</sub>-B[a]P enabled the optimization of chromatographic conditions and analytical selectivity.

### Stability

Standard solutions were stable at ambient temperature for a week at all calibration levels, with B[a]P concentrations measured as 100–103% of those in fresh solutions. After storage of the standards at  $-20^\circ\text{C}$  for 15 weeks, the measured B[a]P concentrations for solutions at calibration levels 3 - 9 were 95.2–105%. The accuracy of calibration standard levels 1 and 2 were in the range 101–109% at all time-points. For matrix samples, the measured mean concentration of B[a]P in modified Virginia blend extracts ( $n=5$ ) reduced by 14.6% after 1 month of storage at  $-20^\circ\text{C}$ . The precision of measurement (% RSD) was consistent for freshly prepared extracts and after storage at  $-20^\circ\text{C}$  for 15 weeks with values of 8.2% and 7.6% respectively.

### Linearity and statistical evaluation

The correlation coefficient for calibration standards 1 – 9 in pure solvent (acetonitrile) was high ( $R^2 > 0.995$ ). The p-value of  $> 0.05$  indicated no statistically significant difference at the 95% confidence level between calibration curves for standards in solvent,  $n=3$ . For matrix-matched standards, regression analysis of all calibration curves showed a strong correlation ( $R^2 > 0.996$ ).



**Figure 4** HPLC fluorescence chromatograms of B[a]P and D<sub>12</sub>-B[a]P in standard stock solutions (A) and in Tanzanian fire-cured tobacco (B), Granit White snus (C) and 3R4F Reference Tobacco after fortification with 5 ng/mL D<sub>12</sub>-B[a]P.  $t_r$ , retention time (min).

When the averaged calibration curve for Tanzanian dark fire-cured tobacco was compared with that for solvent, the slopes were not significantly different at the 95% confidence level. However, a statistically significant difference was seen between the intercepts ( $p < 0.05$ ) at the 95% confidence level. This difference corresponds to the high endogenous level of B[a]P observed in unfortified



Tanzanian dark fire-cured tobacco control samples Significant differences in intercepts between matrix matched standards and standards in solvent were also seen for Square dry snuff, Kentucky reference cigarette, 3R4F (Table 5) which is consistent with the endogenous levels of B[a]P in these matrices. The endogenous levels of B[a]P quantified in unfortified matrix samples are presented in Table 6.

**Table 5** Comparison of linearity of calibration between solvent and standard fortified matrix samples

Matrix	Slope	Intercept p-value
Tanzanian fire-cured tobacco	0.121	<0.001
Square dry snuff <sup>1</sup>	0.703	<0.001
Kentucky Reference cigarette (3R4F)	0.567	<0.001
Oliver Twist pellet tobacco	<0.001	0.163
Granit White snus	0.231	0.393
Lucky Strike Original snus	0.440	0.332
Modified Virginia Blend <sup>2</sup>	0.695	0.221

<sup>1</sup>Data from instrument 1. <sup>2</sup>Data from instrument 2.

The p-values for the slopes in all matrices except Oliver Twist pellet tobacco were >0.05 (Table 6), indicating no significant differences between slope gradients for matrix matched standards and standards in solvent at the 95% confidence level. There was a small difference in the magnitude of the slope for B[a]P levels in fortified Oliver Twist matrix compared to standards in solvent. Differences are attributed to the Oliver Twist extract containing endogenous levels of B[a]P close to the LOQ (Table 6) as slightly higher variability was observed at concentrations near the LOQ. Measurements were however within the recommended acceptance limits for the precision of measurement, RSD <20%.<sup>31, 32</sup>

**Table 6** B[a]P concentrations obtained by HPLC-FLD

Matrix	Water content (%)	B[a]P concentration WWB (ng/g)	B[a]P concentration DWB (ng/g)	Relative SD (%)
Kentucky Reference cigarette (3R4F)	10.8	10.7	12.0	1.22
Modified Virginia Blend	11.7	51.1	57.9	3.84
Tanzanian fire-cured tobacco	10.8	118	135	6.43
Square dry snuff	8.1	79.7	86.7	1.39
Oliver Twist pellet tobacco	13.1	0.42	0.48	11.1
Lucky Strike Original snus	49.3	1.75	3.45	7.33
Granit White snus	42.2	1.27	2.20	15.9

WWB, wet weight basis; DWB, dry weight basis.

The Oliver Twist unfortified blank matrix (0.48 ng/g B[a]P DWB, RSD = 11.1% n = 3) was subtracted from the other fortification levels for statistical analysis which led to a slight difference between the slopes. Although there was a slight difference between slope gradients for matrix and solvent for Oliver Twist pellet tobacco, the other validation parameters were unaffected. Averaged data generated for modified Virginia blend indicated a significant statistical difference between slopes at the 95% confidence level with a p-value = 0 for the slope of averaged matrix matched curves. The observed statistical differences in the slopes for modified Virginia blend may be attributed to instrumental variation as data used to generate the first order linear models using ANOVA were averaged from both instruments 1 and 2. Comparison of calibration curves from a single instrument for modified Virginia blend indicated no significant differences between slopes, with a p-value

>0.05 (Table 5). For samples with low endogenous B[a]P concentrations in the unfortified matrix (Oliver Twist chewing tobacco, Granit White snus and LS Original snus) there was no statistically significant difference between intercepts of calibration curves for standards in solvent and fortified matrix at the 95% confidence level. In the absence of blank matrix, the method LOD for B[a]P was estimated as 59 pg from the calibration curves of standards in solvent.<sup>27</sup> The LOQ for the analysis based on extraction of Granit White pouched snus matrix was 0.38 ng/g B[a]P (WWB) and was within the SANCO<sup>31</sup> and FDA<sup>32</sup> defined acceptance criteria.

### Accuracy and precision

Calibration standards 1–9 in solvent (acetonitrile) exhibited accuracy values of 96.7–114% and precision values of 0.142–2.06% expressed as residual standard deviation (RSD) (Table 7). The accuracy of measurement of the calibration standards 1 – 9 in solvent (n=6) ranged from 96.7% to 114% across all calibration levels with a maximum precision (RSD) of 2.06% which met the specified acceptance criteria.<sup>15,16,21</sup> The accuracy for calibration standard 1 (114%) and the precision (RSD) was 1.62% which was within the acceptance criteria for concentrations of analyte < 1 ng/g with accuracy limits of 50 – 120 % and precision of < 20%.

In all fortified matrices (corrected for endogenous B[a]P concentrations), the accuracy of measurements close to the LOQ ranged from 70% to 120%, with a relative standard deviation < 20%. For unfortified Granit White matrix (endogenous B[a]P concentrations close to the LOQ) the precision of measurement (RSD) was 12.2% (n=16). The average recovery values for D<sub>12</sub>-B[a]P in Granit White snus were 72.0–83.7% and the accuracy of B[a]P measurement after correction for endogenous B[a]P ranged between 101% and 107%. Therefore, even at calibration level 1, B[a]P could be measured with acceptable accuracy.<sup>31, 32</sup>

**Table 7** Accuracy and precision of B[a]P solvent-based calibration standards

B[a]P concentration (ng/mL)	Mean concentration (n=6) (ng/mL)	Mean accuracy (%)	Precision RSD (%)
0.250	0.284	114	1.51
0.499	0.536	107	1.17
1.00	0.999	100	2.06
2.50	2.54	102	0.713
4.99	5.18	104	0.142
9.99	9.69	96.7	0.802
15.0	14.8	98.7	0.286
20.0	20.1	101	0.651
25.0	25.2	101	0.347

RSD, relative standard deviation.

The intermediate precision for mass normalised samples at the low level of B[a]P fortification was 1.19 ng/g after subtraction of the unfortified B[a]P concentration for Granit White (n=16). The pooled precision for the low fortification level was 23%. Variability was observed as concentrations were near the LOQ. However the precision (RSD) was ≤ 20% when data for individual analysts were assessed (range 7.80–14.7%). For medium-level and high-level fortification, the pooled relative standard deviation performance standard of ≤15% was met by all analysts when data were pooled, therefore meeting SANCO and FDA acceptance criteria.<sup>31,32</sup>

### Uncertainty of measurement

The expanded uncertainty for the determination of approximately 95% confidence interval limits was calculated from data generated by the three analysts using instrument 1 and 2 on separate days (Table 8). The percentage-expanded



uncertainty was  $\pm 22.2\%$  of the mean for low level B[a]P fortification in Granit White samples,  $\pm 18.0\%$  for the medium level and  $\pm 23.8\%$  for the high level, with an average of  $\pm 21.3\%$ . The main factors influencing the uncertainty of measurement was some slight differences in fluorescent detector sensitivity observed from the two different instrumental systems used for method validation. However the main influencing factor on the uncertainty of measurement was the analyst skill (for example possible differences in B[a]P and D<sub>12</sub>-B[a]P fortification, variability in the pipettes used for fortification and peak integration differences). The uncertainty from each source therefore contributed to the overall expanded uncertainty of measurement.

**Table 8** Uncertainty of measurement for B[a]P in fortified Granit White snus

Fortification level	Mass of B[a]P fortified into matrix (ng)	Mean (n=18) mass of B[a]P quantified (ng)	Expanded uncertainty (U) (ng)	Expanded uncertainty (%)
Low	2.99	2.79	0.62	22.2
Medium	21.0	19.7	3.54	18.0
High	45.0	46.7	11.1	23.8

## Conclusion

A method has been developed and validated for the determination of B[a]P in Kentucky reference 3R4F cigarette tobacco, a lightly modified Virginia blend cigarette tobacco, Tanzanian dark fire-cured tobacco blend, for STPs including commercially available Square dry snuff, Oliver Twist chewing tobacco and Granit White and Lucky Strike Original snus. The method applies to a concentration range of 0.38 ng/g to 150 ng/g based on extraction of a 0.5 - 2 g aliquot of sample. The expanded uncertainty of measurement was  $\pm 21.3\%$  of the mean. In the absence of blank matrix, the method LOD for B[a]P was estimated as 59 pg from the calibration curves of standards in solvent<sup>27</sup> and the LOQ for the analysis based on extraction of Granit White pouched snus was 0.38 ng/g B[a]P (W/B), satisfying the DG SANCO<sup>31</sup> and FDA<sup>32</sup> defined acceptance criteria.

## Notes and references

<sup>a</sup>British American Tobacco, Regents Park Road, Millbrook, Southampton SO15 8TL, UK.

Present Address

<sup>†</sup>Marchwood Scientific Services, 371 Millbrook Road West, Southampton SO15 0HW, UK. E-mail maria.carradus@marchwood-scientific.co.uk

1. Report on the scientific basis of tobacco product regulation, report of a World Health Organisation (WHO) Study Group, Geneva World Health Organisation, 2008, WHO Technical Report Series No. 955.

2. Burns, D. M.; Dybing, E.; Gray, N.; Hecht, S.; Anderson, C.; Sanner, T.; O'Connor, R.; Djordjevic, M.; Dresler, C.; Hainaut, P.; Jarvis, M.; Opperhuizen, A.; Straif, K. *Tob. Control* **2008**, *17*, 132–141.

3. FDA. *Fed. Reg.* **2012**, *77*, 20034–20037.

4. Draft guidance for industry: reporting harmful and potentially harmful constituents in tobacco products and tobacco smoke under federal food, drug and cosmetic act, URL

<http://www.fda.gov/TobaccoProducts/GuidanceComplianceRegulatoryInformation/ucm297752.htm>

(5) Rutqvist, L. E.; Curvall, M.; Hassler, T.; Ringberger, T. Wahlberg, I. *Harm Reduct. J.* **2011**, *8*, 11.

(6) European Smokeless Tobacco Council, URL <http://www.estoc.org/about-smokeless-tobacco>

(7) Toth, L.; Blaas, W. *Fleischwirtsch* **1972**, *52*, 1419.

(8) Rodgman, A.; Perfetti, T. A. *The Chemical Components of Tobacco and Tobacco Smoke*. CRC Press: Boca Raton, F.L., 2013, 2nd edn.

(9) McAdam K.; Faizi, A.; Kimpton, H.; Porter, A.; Rodu, B. *Chem. Central J.* **2013**, *7*, 151.

(10) IRAC. IRAC monographs on the evaluation of carcinogenic risk to humans. IRAC Press: Lyon, France, 2007, pp 55-60.

(11) International Programme on Chemical Safety (IPCS). *Selected non-heterocyclic polycyclic aromatic hydrocarbons. Environmental Health Criteria*. World Health Organization: Geneva, 1998.

(12) Chemical Hazard Evaluation and Communication Group, Biomedical and Environmental Information Analysis Section, Health and Safety Research Division. *Toxicity summary for benzo(a)pyrene*. Risk Assessment Information System: Washington, D.C., 1994.

(13) Sepetdjian, E.; Shihadeh, A.; Saliba, N. A. *Food Chem. Toxicol.* **2008**, *46*, 1582–1590.

(14) Ding, Y. S.; Trommel, J. S.; Yan, X. J.; Ashley, D.; Watson C. H. *Environ. Sci. Technol.* **2009**, *39*, 471–478.

(15) Tarrant, J. E.; Mills, K.; Williard, C. *J. Chromatogr. A* **2009**, *1216*, 2227–2234.

(16) CORESTA. CORESTA Recommended Method No. 58: Determination of benz(a)pyrene in cigarette mainstream smoke – gas chromatography-mass spectrometry method. Cooperation Centre for Scientific Research Relative to Tobacco: Paris, France, 2004.

(17) Zha, Q.; Qian, N. X.; Moldoveanu, S. C. *J. Chromatogr. Sci.* **2002**, *40*, 403–408.

(18) Sinclair, N. M.; Frost, B. E. *Analyst* **1978**, *103*, 1199–1203.

(19) Lodovici, M.; Akpan, V.; Evangelisti, C.; Dolara, P. *J. Appl. Toxicol.* **2004**, *24*, 277–281.

(20) Mahanama, K. R. R.; Gundel, L. A.; Daisey, J. M. *Int. J. Environ. Analyt. Chem.* **1994**, *56*, 289–309

(21) Tomkins, B. A.; Jenkins, R. A.; Griest, W. H.; Reagan, R. R. *J. Assoc. Off. Anal. Chem.* **1985**, *68*, 935–940.

(22) Ding, Y. S.; Ashley, D.; Watson, C. H. *J. Agric. Food Chem.* **2009**, *55*, 5966–5973.

(23) Stepanov, I.; Villalta, P.; Knezevich, A.; Jensen, J.; Hatsukami, D.; Hecht, S. S. *Chem. Res. Toxicol.* **2010**, *23*, 66–73.

(24) Ishizaki, A.; Saito, K.; Hanioka, N.; Narimatsu, S.; Karatoa, H. *J. Chromatogr. A* **2010**, *1217*, 5555–5563.

(25) ICH. ICH harmonized tripartite guideline: validation of analytical procedures: text and methodology Q2(R1), URL [http://www.ich.org/fileadmin/Public\\_Web\\_Site/ICH\\_Products/Guidelines/Quality/Q2\\_R1/Step4/Q2\\_R1\\_Guideline.pdf](http://www.ich.org/fileadmin/Public_Web_Site/ICH_Products/Guidelines/Quality/Q2_R1/Step4/Q2_R1_Guideline.pdf)

(26) ICH guideline for industry, text on validation of analytical procedures: ICH-Q2A, URL <http://www.fda.gov/downloads/Drugs/Guidances/ucm073381.pdf>

(27) ICH Guideline for industry Q2B, text on validation of analytical procedures: methodology, URL <http://www.fda.gov/downloads/Drugs/GuidanceComplianceRegulatoryInformation/Guidances/ucm073384.pdf>

(28) IUPAC. *Pure Appl. Chem* **2002**, *74*, 835–855.

(29) IUPAC. *Pure Appl. Chem.* **1999**, *71*, 337–348.

(30) ISO. ISO/IEC 17025: 2005 General requirements for the competence of calibration and testing laboratories, URL <http://www.iso.org>

(31) SANCO. Method validation and quality control procedures for pesticide residue analysis in food and feed: document No. SANCO/10684/2009, URL [http://ec.europa.eu/food/plant/protection/resources/qualcontrol\\_en.pdf](http://ec.europa.eu/food/plant/protection/resources/qualcontrol_en.pdf)

(32) FDA. Guidance for industry: bioanalytical method validation, URL <http://www.fda.gov/downloads/Drugs/Guidances/ucm070107.pdf>

(33) Roemer, E.; Schramke, H.; Weiler, H.; Buettner, A.; Kausche, S.; Weber, S.; Berges, A.; Stueber, M.; Muench, M.; Trelles-Sticken, E.; Pype, J.; Kohlgrueber, K.; Voelkel, H.; Wittke, S. *Beitr. Tabakforsch. Int.* **2012**, *25*, 1.

(34) ITGA. Tobacco types, URL

<http://www.tobaccoleaf.org/conteudos/default.asp?ID=1&IDP=3&P=5>

(35) Cajka, T.; Sandy, C.; Bachanova, V.; Drabova, L.; Kalachova, K.; Pulkraova, J.; Hajslova, J. *Anal. Chim. Acta* **2012**, *743*, 51–60

(36) Laidlaw, I. Determination of water in tobacco by near infra-red spectroscopy, URL

<https://www.chem.agilent.com/Library/applications/uv66.pdf>

(37) European Commission. *Off. J. Eur. Commun.* **2002**, *L 221*, 8–32.

Journal Name

1 (38) Bell, S. *Measurement Good Practice Guide* No. 11 **2001** (Issue 2)  
2 [https://www.wmo.int/pages/prog/gcos/documents/gruanmanuals/UK\\_NPL/](https://www.wmo.int/pages/prog/gcos/documents/gruanmanuals/UK_NPL/mgpg11.pdf)  
3  [5  \[7  \\[9  \\\[11  \\\\[13  \\\\\[15  \\\\\\[17  \\\\\\\[19  \\\\\\\\[21  \\\\\\\\\[23  \\\\\\\\\\[25  \\\\\\\\\\\[27  \\\\\\\\\\\\[29  \\\\\\\\\\\\\[31  \\\\\\\\\\\\\\[33  \\\\\\\\\\\\\\\[35  \\\\\\\\\\\\\\\\[37  \\\\\\\\\\\\\\\\\[39  \\\\\\\\\\\\\\\\\\[41  \\\\\\\\\\\\\\\\\\\[43  \\\\\\\\\\\\\\\\\\\\[45  \\\\\\\\\\\\\\\\\\\\\[47  \\\\\\\\\\\\\\\\\\\\\\[49  \\\\\\\\\\\\\\\\\\\\\\\[51  \\\\\\\\\\\\\\\\\\\\\\\\[53  \\\\\\\\\\\\\\\\\\\\\\\\\[55  \\\\\\\\\\\\\\\\\\\\\\\\\\[57  \\\\\\\\\\\\\\\\\\\\\\\\\\\[59\\\\\\\\\\\\\\\\\\\\\\\\\\\]\\\\\\\\\\\\\\\\\\\\\\\\\\\(https://www.wmo.int/pages/prog/gcos/documents/gruanmanuals/UK\\\\\\\\\\\\\\\\\\\\\\\\\\\_NPL/</a><br/>58 <a href=\\\\\\\\\\\\\\\\\\\\\\\\\\\)\\\\\\\\\\\\\\\\\\\\\\\\\\]\\\\\\\\\\\\\\\\\\\\\\\\\\(https://www.wmo.int/pages/prog/gcos/documents/gruanmanuals/UK\\\\\\\\\\\\\\\\\\\\\\\\\\_NPL/</a><br/>56 <a href=\\\\\\\\\\\\\\\\\\\\\\\\\\)\\\\\\\\\\\\\\\\\\\\\\\\\]\\\\\\\\\\\\\\\\\\\\\\\\\(https://www.wmo.int/pages/prog/gcos/documents/gruanmanuals/UK\\\\\\\\\\\\\\\\\\\\\\\\\_NPL/</a><br/>54 <a href=\\\\\\\\\\\\\\\\\\\\\\\\\)\\\\\\\\\\\\\\\\\\\\\\\\]\\\\\\\\\\\\\\\\\\\\\\\\(https://www.wmo.int/pages/prog/gcos/documents/gruanmanuals/UK\\\\\\\\\\\\\\\\\\\\\\\\_NPL/</a><br/>52 <a href=\\\\\\\\\\\\\\\\\\\\\\\\)\\\\\\\\\\\\\\\\\\\\\\\]\\\\\\\\\\\\\\\\\\\\\\\(https://www.wmo.int/pages/prog/gcos/documents/gruanmanuals/UK\\\\\\\\\\\\\\\\\\\\\\\_NPL/</a><br/>50 <a href=\\\\\\\\\\\\\\\\\\\\\\\)\\\\\\\\\\\\\\\\\\\\\\]\\\\\\\\\\\\\\\\\\\\\\(https://www.wmo.int/pages/prog/gcos/documents/gruanmanuals/UK\\\\\\\\\\\\\\\\\\\\\\_NPL/</a><br/>48 <a href=\\\\\\\\\\\\\\\\\\\\\\)\\\\\\\\\\\\\\\\\\\\\]\\\\\\\\\\\\\\\\\\\\\(https://www.wmo.int/pages/prog/gcos/documents/gruanmanuals/UK\\\\\\\\\\\\\\\\\\\\\_NPL/</a><br/>46 <a href=\\\\\\\\\\\\\\\\\\\\\)\\\\\\\\\\\\\\\\\\\\]\\\\\\\\\\\\\\\\\\\\(https://www.wmo.int/pages/prog/gcos/documents/gruanmanuals/UK\\\\\\\\\\\\\\\\\\\\_NPL/</a><br/>44 <a href=\\\\\\\\\\\\\\\\\\\\)\\\\\\\\\\\\\\\\\\\]\\\\\\\\\\\\\\\\\\\(https://www.wmo.int/pages/prog/gcos/documents/gruanmanuals/UK\\\\\\\\\\\\\\\\\\\_NPL/</a><br/>42 <a href=\\\\\\\\\\\\\\\\\\\)\\\\\\\\\\\\\\\\\\]\\\\\\\\\\\\\\\\\\(https://www.wmo.int/pages/prog/gcos/documents/gruanmanuals/UK\\\\\\\\\\\\\\\\\\_NPL/</a><br/>40 <a href=\\\\\\\\\\\\\\\\\\)\\\\\\\\\\\\\\\\\]\\\\\\\\\\\\\\\\\(https://www.wmo.int/pages/prog/gcos/documents/gruanmanuals/UK\\\\\\\\\\\\\\\\\_NPL/</a><br/>38 <a href=\\\\\\\\\\\\\\\\\)\\\\\\\\\\\\\\\\]\\\\\\\\\\\\\\\\(https://www.wmo.int/pages/prog/gcos/documents/gruanmanuals/UK\\\\\\\\\\\\\\\\_NPL/</a><br/>36 <a href=\\\\\\\\\\\\\\\\)\\\\\\\\\\\\\\\]\\\\\\\\\\\\\\\(https://www.wmo.int/pages/prog/gcos/documents/gruanmanuals/UK\\\\\\\\\\\\\\\_NPL/</a><br/>34 <a href=\\\\\\\\\\\\\\\)\\\\\\\\\\\\\\]\\\\\\\\\\\\\\(https://www.wmo.int/pages/prog/gcos/documents/gruanmanuals/UK\\\\\\\\\\\\\\_NPL/</a><br/>32 <a href=\\\\\\\\\\\\\\)\\\\\\\\\\\\\]\\\\\\\\\\\\\(https://www.wmo.int/pages/prog/gcos/documents/gruanmanuals/UK\\\\\\\\\\\\\_NPL/</a><br/>30 <a href=\\\\\\\\\\\\\)\\\\\\\\\\\\]\\\\\\\\\\\\(https://www.wmo.int/pages/prog/gcos/documents/gruanmanuals/UK\\\\\\\\\\\\_NPL/</a><br/>28 <a href=\\\\\\\\\\\\)\\\\\\\\\\\]\\\\\\\\\\\(https://www.wmo.int/pages/prog/gcos/documents/gruanmanuals/UK\\\\\\\\\\\_NPL/</a><br/>26 <a href=\\\\\\\\\\\)\\\\\\\\\\]\\\\\\\\\\(https://www.wmo.int/pages/prog/gcos/documents/gruanmanuals/UK\\\\\\\\\\_NPL/</a><br/>24 <a href=\\\\\\\\\\)\\\\\\\\\]\\\\\\\\\(https://www.wmo.int/pages/prog/gcos/documents/gruanmanuals/UK\\\\\\\\\_NPL/</a><br/>22 <a href=\\\\\\\\\)\\\\\\\\]\\\\\\\\(https://www.wmo.int/pages/prog/gcos/documents/gruanmanuals/UK\\\\\\\\_NPL/</a><br/>20 <a href=\\\\\\\\)\\\\\\\]\\\\\\\(https://www.wmo.int/pages/prog/gcos/documents/gruanmanuals/UK\\\\\\\_NPL/</a><br/>18 <a href=\\\\\\\)\\\\\\]\\\\\\(https://www.wmo.int/pages/prog/gcos/documents/gruanmanuals/UK\\\\\\_NPL/</a><br/>16 <a href=\\\\\\)\\\\\]\\\\\(https://www.wmo.int/pages/prog/gcos/documents/gruanmanuals/UK\\\\\_NPL/</a><br/>14 <a href=\\\\\)\\\\]\\\\(https://www.wmo.int/pages/prog/gcos/documents/gruanmanuals/UK\\\\_NPL/</a><br/>12 <a href=\\\\)\\\]\\\(https://www.wmo.int/pages/prog/gcos/documents/gruanmanuals/UK\\\_NPL/</a><br/>10 <a href=\\\)\\]\\(https://www.wmo.int/pages/prog/gcos/documents/gruanmanuals/UK\\_NPL/</a><br/>8 <a href=\\)\]\(https://www.wmo.int/pages/prog/gcos/documents/gruanmanuals/UK\_NPL/</a><br/>6 <a href=\)](https://www.wmo.int/pages/prog/gcos/documents/gruanmanuals/UK_NPL/</a><br/>4 <a href=)

Analytical Methods Accepted Manuscript