

# Analytical Methods

Accepted Manuscript



This is an *Accepted Manuscript*, which has been through the Royal Society of Chemistry peer review process and has been accepted for publication.

*Accepted Manuscripts* are published online shortly after acceptance, before technical editing, formatting and proof reading. Using this free service, authors can make their results available to the community, in citable form, before we publish the edited article. We will replace this *Accepted Manuscript* with the edited and formatted *Advance Article* as soon as it is available.

You can find more information about *Accepted Manuscripts* in the [Information for Authors](#).

Please note that technical editing may introduce minor changes to the text and/or graphics, which may alter content. The journal's standard [Terms & Conditions](#) and the [Ethical guidelines](#) still apply. In no event shall the Royal Society of Chemistry be held responsible for any errors or omissions in this *Accepted Manuscript* or any consequences arising from the use of any information it contains.

1  
2 1 **Development of a new clean methodology with ultrasound-assisted**  
3  
4 2 **extraction for analysis of sodium in pet food**  
5  
6 3  
7  
8 4

9  
10 5 **Maria Izabel Milani<sup>a</sup>, Eduardo Luiz Rossini<sup>a</sup>, Leonardo Pezza<sup>a</sup>, Helena Redigolo Pezza<sup>a,\*</sup>**  
11  
12 6

13  
14 7 <sup>a</sup> Instituto de Química, Universidade Estadual Paulista “Julio de Mesquita Filho”, UNESP,  
15  
16 8 R. Prof. Francisco Degni 55, P.O. Box 355, 14800-900, Araraquara, SP, Brazil  
17  
18 9  
19 10  
20 11  
21 12  
22 13  
23 14  
24 15  
25 16  
26 17  
27 18  
28 19  
29 20  
30 21  
31 22  
32 23  
33 24  
34 25  
35 26  
36 27  
37 28  
38 29  
39 30  
40 31  
41 32  
42 33  
43 34

44 27 **\* Corresponding author**

45  
46 28 **Fax: +55-16-33327932**

47  
48 29 **E-mail address: hrpezza@iq.unesp.br (H.R. Pezza)**  
49  
50  
51  
52  
53  
54  
55  
56  
57  
58  
59  
60

**Abstract**

Sodium is essential to all living beings, including humans and animals; in higher heterotrophic organisms, it is responsible for regulating the osmotic pressure of tissues and maintaining the sodium-potassium pump. However, even though the presence of sodium is vital, in excess it can cause problems such as increased blood pressure and kidney stone formation. The official methodology for the analysis of sodium in pet food employs corrosive acids and high temperatures during sample preparation, making the process time-consuming and prone to error. In this work, a new methodology is proposed for the extraction of sodium from pet food, using ultrasonic irradiation to enhance the transfer of the analyte to solution, with subsequent determination by flame photometry. This new method, which is coherent with the principles of green chemistry, provided a linear range of 1-20 mg L<sup>-1</sup> (R = 0.998), and limits of detection (LOD) and quantification (LOQ) of 0.26 and 0.90 mg L<sup>-1</sup>, respectively. Recoveries were in the range 98.4-104%. The technique was successfully applied to different brands of commercial pet food and compared favorably with the official methodology (at a 95% confidence level). In comparative tests of the two extraction methods, the proposed methodology showed good repeatability, selectivity, precision, and accuracy.

**Keywords:** Sodium, ultrasonic extraction, green analytical methodology.

## 1. Introduction

Sodium is one of the Earth's most abundant elements. It is essential to all living organisms, including humans and animals, where it contributes to maintaining osmotic balance<sup>1,2</sup> and participates in the sodium-potassium pump that controls the electrical potential of cells<sup>3</sup>. Salt (sodium chloride) has played a crucial role in the development of human society, because it is a key component used to preserve foods such as meat, fish, and pet food. The sodium in the diets of humans and animals is mainly present in the form of sodium chloride.

In recent years, dietary sodium has become one of the more controversial nutrient elements in foods. Some commercial pet foods contain high levels of sodium, which some veterinarians have suggested might be unsafe<sup>4</sup>. Signs of sodium deficiency include increased restlessness, elevated heart rate, reduced urine specific gravity, and dry mucous membranes<sup>5</sup>. However, the intake of sodium in excess can cause several problems, such as increased blood pressure and the onset of kidney stones<sup>4</sup>. Cases of acute salt toxicosis have been reported in dogs ingesting extremely high amounts of sodium<sup>6</sup>. In the case of pets, excessive intake of sodium is related to the feed provided to the animals, where sodium is not only present in the form of NaCl, but also as preservatives such as sodium benzoate and sodium nitrite, as well as dyes.

In humans, excess salt increases oxidative stress, which is one of the hallmarks of renal failure<sup>7</sup>. In the case of dogs and cats, uncertainty remains concerning the effects of high dietary sodium intake on renal disease<sup>4</sup>. In Brazil, the agency responsible for the control of this type of product is the Ministry of Agriculture, Livestock, and Food Supply (MAPA)<sup>8</sup>, but no limits have been established concerning the addition of salt to animal feed.

Due to its importance in biochemical processes, control of the levels of Na in pet food is needed, which in turn requires efficient methods of sample preparation that enable fast and accurate quantification of the element. The literature reports few studies concerning mapping of the elements present in animal feed<sup>9,10</sup>, and the sample treatments that have been used (such as in the official

1 88 methodology) are time-consuming and environmentally unfriendly, employing high temperatures and  
2  
3  
4 89 strong corrosive acids, which are contrary to the principles of green chemistry<sup>11</sup>.

5  
6 90 The implementation of green chemistry techniques has become increasingly popular since the  
7  
8  
9 91 1990s and is based on 12 principles that aim to minimize environmental impacts, reduce or eliminate  
10  
11 92 possible harm to the operator, and provide faster and more efficient analyses<sup>11,12</sup>.

12  
13 93 Ultrasonic irradiation is an environmentally friendly alternative to solid-liquid extraction that  
14  
15  
16 94 can be used for the pretreatment of solid samples, enabling faster performance of steps such as  
17  
18 95 dissolution, extraction, and leaching, amongst others<sup>13</sup>. Ultrasonication increases extraction efficiency  
19  
20 96 due to a combination of acoustic cavitation and mechanical effects. Microbubbles formed during  
21  
22  
23 97 cycles of compression and decompression increase in size and eventually collapse, which enhances the  
24  
25 98 removal into solution of sodium and other minerals present in the solid sample. The use of ultrasound  
26  
27 99 therefore helps to increase the amount of analyte extracted from the sample<sup>14-19</sup>.

28  
29  
30 100 In this paper, we evaluate the efficiency of a new methodology for the extraction of sodium  
31  
32 101 from pet food, using deionized water as the solvent and ultrasonication to enhance the extraction. The  
33  
34 102 determination of sodium was performed by flame photometry, which is simple, fast, inexpensive, and  
35  
36 103 selective for the analyte in question. The proposed methodology was applied in the analysis of  
37  
38  
39 104 different pet food samples.

40  
41  
42 105

## 43 44 106 **2. Experimental**

### 45 46 107 *2.1. Materials, reagents, and solutions*

47  
48  
49 108 Sodium chloride (analytical grade, 100% purity) was purchased from Mallinckrodt. Prior to  
50  
51 109 use, the reagent was dried in an oven for 1 h at 250 °C. Concentrated nitric acid (60-65%) was  
52  
53 110 purchased from Synth, and the dilutions utilized in the reference method (20% and 1 mol L<sup>-1</sup> nitric  
54  
55  
56 111 acid) were prepared using deionized water (18 MΩ cm) obtained from a Milli-Q system (Millipore).  
57  
58 112 Polyethylene bottles and beakers were used throughout the experiments.  
59  
60

1 113 A stock standard solution of 100 mg L<sup>-1</sup> Na<sup>+</sup> was prepared using deionized water. Working  
2  
3  
4 114 standard solutions (1-20 mg L<sup>-1</sup>) were prepared by appropriate dilution of the stock solution. For the  
5  
6 115 official method, a stock standard solution of 100 ppm Na<sup>+</sup> was prepared in 1 mol L<sup>-1</sup> nitric acid.  
7

8  
9 116 Seven commercial pet foods for dogs and cats were acquired from local shops in Araraquara  
10  
11 117 (São Paulo, Brazil).  
12

13 118

## 14 15 16 119 *2.2. Equipment*

17  
18 120 Initial sample homogenization employed a domestic blender together with a porcelain mortar  
19  
20 121 and pestle. A forced air recirculation and renewal oven (Model TE-394/1, Tecnal) was used for drying  
21  
22 122 the samples. An ultrasonic bath (Model T14, Thornton) operated at a frequency of 40 kHz and power  
23  
24  
25 123 of 60 W was used during the proposed extraction process. A muffle furnace (Model MA 385, Marconi)  
26  
27 124 was used for sample preparation according to the official AOAC method<sup>10</sup>. The determination of  
28  
29  
30 125 sodium present in the samples was performed with a flame photometer (Model B262, Micronal).  
31

32 126

## 33 34 35 127 *2.3. Sample preparation and extraction of sodium using the proposed method*

36  
37 128 The proposed pretreatment of the animal feed samples was performed using a household  
38  
39 129 blender followed by reduction to a fine powder with the aid of a porcelain mortar and pestle. An  
40  
41  
42 130 appropriate mass of the powder was then oven-dried for 6 h at 100 °C and transferred to a polyethylene  
43  
44 131 beaker. It was necessary to dry the samples, because the sodium contents were calculated on a dry  
45  
46 132 mass basis. As recommended by the AOAC<sup>10</sup>, heating for 6 hours was used to ensure that all the water  
47  
48  
49 133 present in the samples of pet food was eliminated. It is not recommended to perform the ultrasound-  
50  
51 134 assisted extraction without first drying the sample in an oven. After the drying step, deionized water  
52  
53  
54 135 was added at a rate of approximately 100 mL for each 1 g of sample, and the mixture was placed under  
55  
56 136 sonication for an optimized time of 20 min. The samples were then filtered through common paper  
57  
58 137 filter, followed by filtration with Whatman qualitative filter paper No.1, and the resulting filtrates were  
59  
60

1 138 collected in polyethylene bottles. Each sample was prepared in triplicate, and sodium determination  
2  
3  
4 139 was performed using flame photometry.  
5  
6 140  
7  
8 141

#### 10 142 *2.4 Optimization of experimental conditions*

13 143 The optimization of the conditions of the ultrasound bath was based on studies by Nascentes et  
14  
15 144 al.<sup>16</sup>, using 1.5 L of water in the bath and six polyethylene vials containing the samples with extraction  
16  
17 145 solvent (water, T = 25 °C), corresponding to two samples in triplicate. The vials were placed in the  
18  
19  
20 146 central region of the bath. The sample mass was kept constant at 1.00 g, and the volume of water  
21  
22 147 inside the polyethylene vials ranged from 25 to 150 mL.  
23

24 148 The sodium extraction time was optimized by ultrasonating seven aliquots of the same  
25  
26  
27 149 sample for times ranging from 0 to 60 min, after which the sodium contents were determined by flame  
28  
29 150 photometry.  
30  
31 151

#### 34 152 *2.5 Study of matrix interferences*

36 153 The possible interference of matrix components was investigated by means of the addition and  
37  
38  
39 154 recovery of standards, using fortification levels from 50 to 250%, with subsequent determination of  
40  
41 155 sodium by flame photometry.  
42  
43 156

#### 46 157 *2.6. Analytical curves*

48 158 A series of sodium solutions were prepared at suitable dilutions (1.00, 2.50, 5.00, 7.50, 10.0,  
49  
50 159 15.0, and 20.0 mg L<sup>-1</sup>). A calibration graph was then prepared by plotting relative emission intensity  
51  
52  
53 160 against sodium concentration in the range 1.00 to 20.0 mg L<sup>-1</sup>.  
54  
55 161

#### 58 162 *2.8. Reference method*

1  
2 163 In the case of the AOAC method<sup>10</sup>, the glassware was first cleaned with 20% HNO<sub>3</sub> solution  
3  
4 164 and then rinsed with deionized water. The feed samples were dried in an oven for 6 h at 100 °C,  
5  
6 165 followed by heating in a muffle furnace at 525 °C for 7 h until a grayish-white color was obtained. The  
7  
8 166 calcined samples were then dissolved in an appropriate volume of 1 mol L<sup>-1</sup> HNO<sub>3</sub>. These solutions  
9  
10 167 were stored in polyethylene bottles prior to analysis using the recommended reference method.  
11  
12 168

### 16 169 **3. Results and Discussion**

#### 18 170 *3.1. Optimization of the experimental conditions*

##### 20 171 *3.1.1. Ultrasonic extraction time*

22 172 Analysis of the sodium concentrations in the solutions obtained after different periods of  
23 173 sonication revealed the formation of a plateau after 15 min (Figure 1). A sonication time of 20 min was  
24 174 therefore adopted, which was sufficient to ensure quantitative extraction of sodium, without extending  
25 175 the extraction process for an unnecessarily long time.  
26  
27  
28  
29  
30  
31

32 176  
33  
34  
35 177 [Insert Figure 1]  
36

##### 37 178 38 39 179 *3.1.2. Effect of the water volume in the extraction vials*

40  
41  
42 180 Variation of the relative amounts of sample and extraction solvent did not significantly influence  
43 181 the determination, as shown in Figure 2.  
44  
45  
46

47 182  
48  
49 183 [Insert Figure 2]  
50  
51 184  
52  
53  
54 185  
55  
56  
57  
58  
59  
60



1 186 3.2. *Construction of analytical curve and determination of LOD and LOQ*

2 187 An analytical curve of the relative emission intensity (RE) as a function of sodium  
3  
4 188 concentration ( $[\text{Na}^+]$ ) was constructed using the solutions prepared with deionized water. The equation  
5  
6 189 for the linear regression was  $\text{RE} = 0.576 + 5.4872[\text{Na}^+]$  and the correlation coefficient value was  
7  
8  
9 190 0.998. The limits of detection (LOD) and quantification (LOQ), determined as recommended by  
10  
11 191 IUPAC<sup>20</sup>, were 0.26 and 0.90 mg L<sup>-1</sup>, respectively.  
12  
13  
14  
15  
16 192

17  
18 193 3.3. *Study of matrix interferences*

19  
20 194 Possible matrix interferences were investigated using the recovery of analyte after the addition  
21  
22 of standards at levels ranging from 50% to 250%. The recoveries obtained were between 98.4% and  
23 195 104% (Table 1). These data indicated that the composition of the commercial product did not  
24  
25 196 significantly interfere in the analysis of sodium, so sample clean-up steps were not necessary.  
26  
27  
28 197  
29  
30 198

31  
32 199 3.4. *Determination of sodium in pet food*

33  
34 200 The proposed method was applied using seven commercial pet food samples and the results  
35  
36 were compared with those obtained with the comparative method. Statistical evaluation using the t-test  
37 201 (95% confidence interval, 2 degrees of freedom) showed that the two sets of data were consistent with  
38  
39 202 each other (Table 2). The calculated t values were lower than the tabulated values, indicating that there  
40  
41 203 was no significant difference between the two methods in terms of precision and accuracy.  
42  
43  
44 204

45  
46 205 The concentrations of sodium found in the samples were from 2775 to 10822 mg kg<sup>-1</sup>. Samples  
47  
48 A, C, F, and G were different cat foods, while samples B, D, and E were dog foods. Sample G was a  
49 206 special food for pets with kidney problems and therefore contained less sodium.  
50  
51 207  
52  
53 208  
54  
55  
56  
57  
58  
59  
60

#### 4. Conclusions

This study demonstrated the viability of ultrasound-assisted extraction of sodium present in pet food. The developed method has the advantage of being more environmentally friendly than the traditional technique; it uses reagents that do not pose any risk to the operator or the environment, and compared to the official method is faster, cheaper, and equally efficient. The main advantages of ultrasound-assisted extraction therefore include a shorter extraction time and the absence of any requirement for solvents or corrosive acids. In addition, ultrasound-assisted extraction can be carried out at a lower temperature. The developed method was successfully applied to the extraction and determination of sodium present in animal feed. A final observation is that there were high concentrations of sodium in the animal feeds tested, which could be a potential cause of contemporary health problems observed in pet animals.

#### Acknowledgements

The authors are grateful to CNPq for financial support.

#### References

- 1 The National Archives (2008). History of Salt. Available at: [http://tna.europarchive.org/20090810121540/salt.gov.uk/history\\_of\\_salt.html](http://tna.europarchive.org/20090810121540/salt.gov.uk/history_of_salt.html) (accessed Aug 11, 2014).
- 2 Portal Educação (2012). Pressão Osmótica. Available at: <http://www.portaleducacao.com.br/biologia/artigos/15557/pressao-osmotica> (accessed Feb 25, 2014).
- 3 J. C. Skou, *Bioch et Bioph Acta*, 1989, **1000**, 435-438.
- 4 M. L. Chandler, *Top Companion Anim M*, 2008, **23**, 148-153.
- 5 National Research Council: Minerals. In: Nutrient Requirements of Dogs and Cats. Beitz DC (chair). Washington DC, The National Academy Press, 2006, pp. 145-192.

- 1 234 6 C. Khanna, H. J. Boermans, B. Wilcock, *J Am Anim Hosp Assoc*, 1997, **33**, 113-117.  
2  
3  
4 235 7 E. Rits, R. Dikoe, C. Morath, V. Schwenger, *Blood Purification*, 2006, **24**, 63-66.  
5  
6 236 8 Ministry of Agriculture, Livestock and Food Supply - MAPA, Normative Instruction No. 42, 2010.  
7  
8 237 9 C. Elias, E. A. N. Fernandes, M. A. Bacchi, *J Radioanal Nucl Chem*, 2012, **291**, 245-250.  
9  
10 238 10 Association of Official Analytical Chemists. Official Methods of AOAC International, 18<sup>th</sup> ed.  
11  
12 239 Gaithersburg, 2006.  
13  
14  
15 240 11 P. T. Anastas, M. M. Kirchhoff, *Acc Chem Res*, 2002, **35**, 686-694.  
16  
17  
18 241 12 L. H. Keith, L. U. Gron, J. L. Young, *Chem Rev*, 2007, **107**, 2695-2708.  
19  
20 242 13 A. Elik, *Talanta*, 2007, **71**, 790-794.  
21  
22 243 14 M. Korn, M. V. A. S. Andrade, S. S. Borges, *R Analytica*, 2003, **3**, 34-39.  
23  
24  
25 244 15 F. Okumura, E. T. G. Cavalheiro, J. A. Nóbrega, *Quim Nova*, 2004, **27**, 832-836.  
26  
27 245 16 C. C. Nascentes, M. Korn, C. S. Souza, M. A. Z. Arruda, *J Brazil Chem Soc*, 2001, **12**, 57-63.  
28  
29 246 17 F. Priego-Capote, M. D. Luque de Castro, *TrAC-Trend Anal Chem*, 2004, **23**, 644-653.  
30  
31 247 18 C. Bendicho, I. De La Calle, F. Pena, M. Costas, N. Cabaleiro, I. Lavilla, *TrAC-Trend Anal Chem*,  
32 248 2012, **31**, 50-60.  
33  
34 249 19 Y. Picó, *TrAC-Trend Anal Chem*, 2013, **43**, 84-99.  
35  
36 250 20 G. L. Long, J. D. Winefordner, *Anal Chem*, 1983, **55**, 712-724.  
37  
38  
39 251  
40  
41 252  
42  
43  
44 253  
45  
46 254  
47  
48 255  
49  
50 256  
51  
52 257  
53  
54 258  
55  
56 259  
57  
58  
59  
60

1 260 **Figure captions**

2 261

3  
4  
5  
6 262 **Figure 1.** Effects of ultrasonication time on the extraction of sodium.

7  
8  
9 263

10 264 **Figure 2.** Effect of the volume of water inside the polyethylene vials on the extraction of sodium

11  
12  
13 265 (emission intensity, %). The sample mass was kept constant at 1.00 g and the volume ranged from 25

14  
15  
16 266 to 150 mL.

17  
18 267

19  
20 268

21  
22  
23 269

24  
25 270

26

27

28

29

30

31

32

33

34

35

36

37

38

39

40

41

42

43

44

45

46

47

48

49

50

51

52

53

54

55

56

57

58

59

60

271 **Table 1** - Recovery data for sodium spiked into feed (brand C).

272	273	274	275	276	277	278
Added (mg L <sup>-1</sup> )	Found (mg L <sup>-1</sup> )	Recovery (%)				
2.50	2.50	100				
5.00	5.19	104				
7.51	7.69	102				
10.0	10.2	102				
12.5	12.3	98.4				

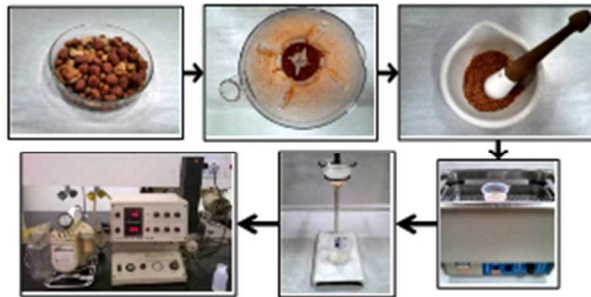
282 **Table 2** – Determination of sodium in seven commercial brands of pet food.

283	284	285	286	287	288	289	290	291	292
Samples	Proposed method <sup>a</sup>	Official method <sup>a</sup>	Calculated t <sup>b</sup>						
A	9410 ± 251	9092 ± 149	1.978						
B	6302 ± 143	6728 ± 180	2.865						
C	10822 ± 79	10425 ± 173	3.056						
D	3840 ± 111	4058 ± 22	4.004						
E	4184 ± 94	4309 ± 17	2.388						
F	6820 ± 231	7014 ± 20	1.645						
G	2775 ± 106	2893 ± 78	2444						

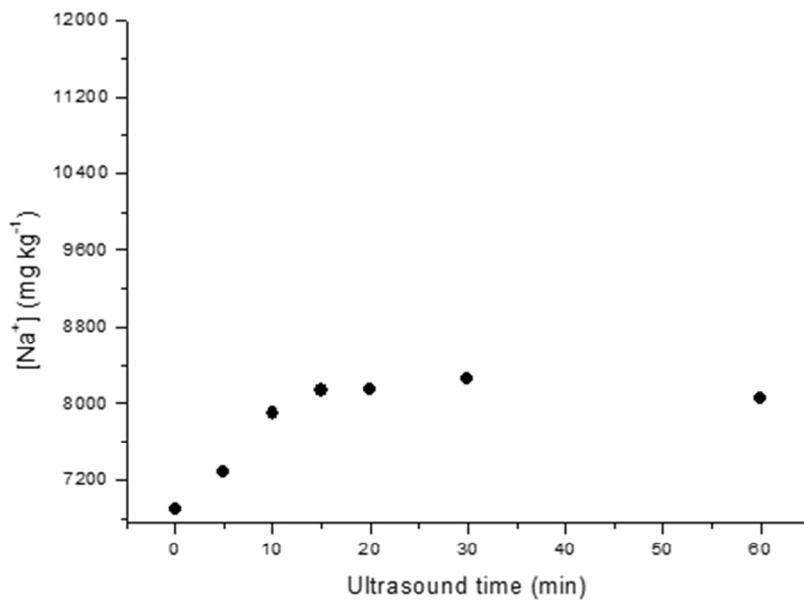
293 <sup>a</sup>Results expressed in mg(Na<sup>+</sup>) kg<sup>-1</sup> of feed.

294 <sup>b</sup>Tabulated value of t (Student's t-test) equal to 4.303 for two degrees of freedom and a confidence  
295 interval of 95%.

1  
2  
3  
4  
5  
6  
7  
8  
9  
10  
11  
12  
13  
14  
15  
16  
17  
18  
19  
20  
21  
22  
23  
24  
25  
26  
27  
28  
29  
30  
31  
32  
33  
34  
35  
36  
37  
38  
39  
40  
41  
42  
43  
44  
45  
46  
47  
48  
49  
50  
51  
52  
53  
54  
55  
56  
57  
58  
59  
60

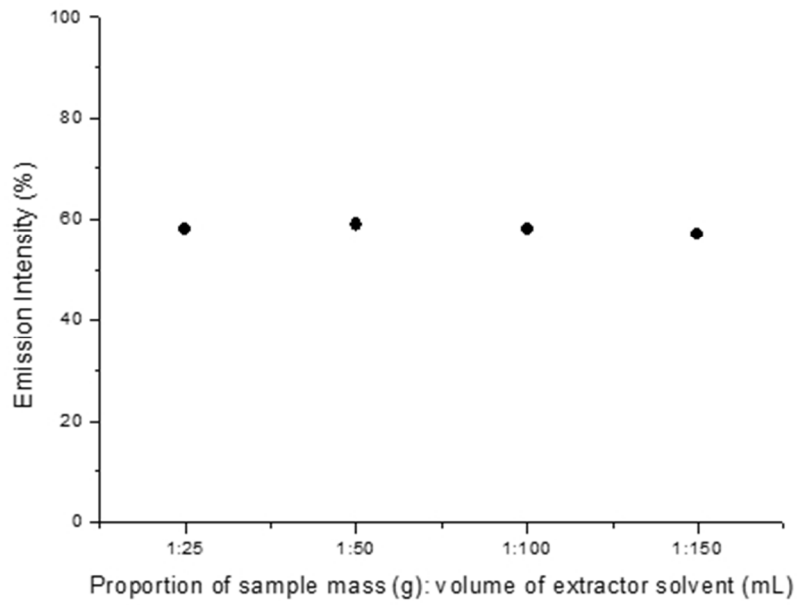


79x39mm (96 x 96 DPI)



150x106mm (96 x 96 DPI)

1  
2  
3  
4  
5  
6  
7  
8  
9  
10  
11  
12  
13  
14  
15  
16  
17  
18  
19  
20  
21  
22  
23  
24  
25  
26  
27  
28  
29  
30  
31  
32  
33  
34  
35  
36  
37  
38  
39  
40  
41  
42  
43  
44  
45  
46  
47  
48  
49  
50  
51  
52  
53  
54  
55  
56  
57  
58  
59  
60



150x106mm (96 x 96 DPI)

1  
2  
3  
4  
5  
6  
7  
8  
9  
10  
11  
12  
13  
14  
15  
16  
17  
18  
19  
20  
21  
22  
23  
24  
25  
26  
27  
28  
29  
30  
31  
32  
33  
34  
35  
36  
37  
38  
39  
40  
41  
42  
43  
44  
45  
46  
47  
48  
49  
50  
51  
52  
53  
54  
55  
56  
57  
58  
59  
60