

# ChemComm

Accepted Manuscript



This is an *Accepted Manuscript*, which has been through the Royal Society of Chemistry peer review process and has been accepted for publication.

*Accepted Manuscripts* are published online shortly after acceptance, before technical editing, formatting and proof reading. Using this free service, authors can make their results available to the community, in citable form, before we publish the edited article. We will replace this *Accepted Manuscript* with the edited and formatted *Advance Article* as soon as it is available.

You can find more information about *Accepted Manuscripts* in the [Information for Authors](#).

Please note that technical editing may introduce minor changes to the text and/or graphics, which may alter content. The journal's standard [Terms & Conditions](#) and the [Ethical guidelines](#) still apply. In no event shall the Royal Society of Chemistry be held responsible for any errors or omissions in this *Accepted Manuscript* or any consequences arising from the use of any information it contains.

## COMMUNICATION

Catalytic S<sub>N</sub>Ar of Unactivated Aryl Chlorides

Cite this: DOI: 10.1039/x0xx00000x

James W. Walton<sup>\*ab</sup> and Jonathan M. J. Williams<sup>a</sup>

Received 00th January 2012,

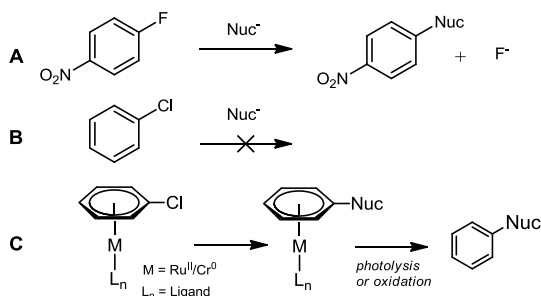
Accepted 00th January 2012

DOI: 10.1039/x0xx00000x

www.rsc.org/

We present nucleophilic aromatic substitution of unsubstituted aryl chlorides via a mechanism that is catalytic in [CpRu(*p*-cymene)]PF<sub>6</sub> and involves a Ru( $\eta^6$ -arylchloride) intermediate. From the spectroscopic evidence we infer that arene exchange is the rate limiting step in this process and develop several new Ru(II) complexes that lower the activation barrier to arene exchange.

Nucleophilic aromatic substitution (S<sub>N</sub>Ar) is one of the building blocks of synthetic chemistry, and is used far and wide in industry and academia. However, limitations restrict the use of S<sub>N</sub>Ar to certain substrates. Activated arenes are required (incorporating an electron withdrawing group to stabilise the negatively charged intermediate, *Scheme 1A*) and the C–X bond must be polarised; the rate of reaction follows the order X = F > Cl >> Br. Alternative arylation methods include metal<sup>1a,b</sup> and non-metal<sup>1c</sup> catalysed coupling reactions of Ar–X and Ar–H.

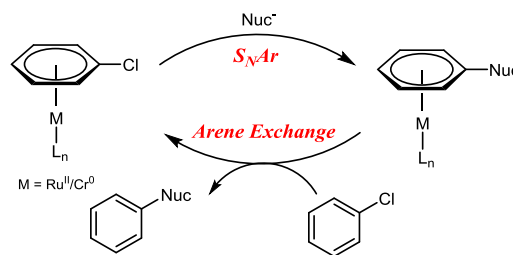


Scheme 1

Fluorobenzene can undergo S<sub>N</sub>Ar with strong alkoxide nucleophiles<sup>2</sup> but chlorobenzene does not undergo S<sub>N</sub>Ar (*Scheme 1B*). One method by which *unactivated* aryl halides (i.e. those without an electron withdrawing group) can undergo S<sub>N</sub>Ar is via  $\eta^6$ -coordination to a transition metal (e.g. Ru(II),<sup>3</sup> Cr(0),<sup>4</sup> Fe(II),<sup>5</sup> Mn(I),<sup>6</sup> *Scheme 1C*). It is well established that  $\pi$ -complexation of an arene to a transition metal increases its reactivity towards nucleophilic attack<sup>7</sup> and deprotonation.<sup>8</sup> More recently, activation of a Cr(0)  $\eta^6$ -aryl C–H bond towards

Pd insertion and subsequent arylation has been achieved.<sup>9</sup> The drawback to these reactions is that the  $\eta^6$ -arene–metal bond is strong and stoichiometric metal is required; liberation of the aryl product is carried out by photolysis<sup>10</sup> or oxidation.<sup>11</sup>

Semmelhack *et al.* propose a catalytic cycle in which an unactivated aryl chloride binds  $\eta^6$  to Cr(0), facilitating S<sub>N</sub>Ar, before exchange between the bound product and free aryl chloride takes place, completing the catalytic cycle (*Scheme 2*).<sup>12</sup> Despite demonstrating an increase in the rate limiting step (arene exchange), no catalytic S<sub>N</sub>Ar was reported.



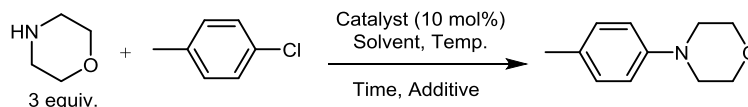
Scheme 2

Rh(III) catalysed intramolecular S<sub>N</sub>Ar based on this catalytic cycle has been reported but is limited to aryl fluorides.<sup>13</sup> Intermolecular S<sub>N</sub>Ar of aryl fluorides (Ru(II) catalysed) has also appeared<sup>14</sup> but requires a large excess of arene and is unsuccessful with aryl chlorides. Anti-Markovnikov hydroamination of styrene via catalytic  $\pi$ -complexation to Ru(II) has also been reported.<sup>15</sup>

In this report we present the first example of catalytic S<sub>N</sub>Ar of unactivated aryl chlorides. Experimental evidence suggests that our method proceeds via a  $\eta^6$ -coordination mechanism. In an effort to reduce the high reaction temperature and long reaction time, several new catalysts were synthesised with a view to lowering the activation barrier of the rate limiting step.

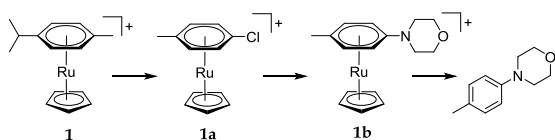
Our initial investigation focussed on the reaction between morpholine and chlorotoluene under a variety of reaction conditions (selected results are given in *Table 1*, see ESI<sup>†</sup> for a complete set of reaction conditions). In the absence of a catalyst no product formed, despite attempts over a range of temperatures and in several solvents (*Table 1*, entry 1–3).

**Table 1** S<sub>N</sub>Ar reaction between morpholine and chlorotoluene under a variety of conditions (see ESI<sup>†</sup> for full list of conditions). Conversions were determined by <sup>1</sup>H-NMR. (Cp\* = pentamethylcyclopentadienyl, DMI = 1,3-dimethylimidazolinone, DPPPent = 1,5-bis(diphenylphosphino)pentane)



Entry	Catalyst	Solvent	Temp. (°C)	Time	Additive	Conversion (%)
1	-	MeCN	80	18 h	-	0
2	-	Toluene	110	18 h	-	0
3	-	Cyclohexanone	150	18 h	-	0
4	[CpRu(MeCN) <sub>3</sub> ]PF <sub>6</sub>	Cyclohexanone	150	18 h	-	6
5	[Cp*Ru(MeCN) <sub>3</sub> ]PF <sub>6</sub>	Cyclohexanone	150	18 h	-	5
6	[CpRu( <i>p</i> -cymene)]PF <sub>6</sub>	Cyclohexanone	150	18 h	-	10
7	[CpRu( <i>p</i> -cymene)]PF <sub>6</sub>	Cyclohexanone	180	18 h	-	18
8	[CpRu( <i>p</i> -cymene)]PF <sub>6</sub>	DMI	180	18 h	-	17
9	[CpRu( <i>p</i> -cymene)]PF <sub>6</sub>	Cyclohexanol	180	18 h	-	16
10	[CpRu( <i>p</i> -cymene)]PF <sub>6</sub>	<i>p</i> -Xylene	180	18 h	-	0
11	[CpRu( <i>p</i> -cymene)]PF <sub>6</sub>	1-Octanol	180	18 h	-	25
12	[CpRu( <i>p</i> -cymene)]PF <sub>6</sub>	1-Octanol	180	18 h	Mol. Sieves	25
13	[CpRu( <i>p</i> -cymene)]PF <sub>6</sub>	1-Octanol	180	18 h	Et <sub>3</sub> N	21
14	[CpRu( <i>p</i> -cymene)]PF <sub>6</sub>	1-Octanol	180	18 h	Na <sub>2</sub> CO <sub>3</sub>	11
15	[Ru( <i>p</i> -cymene)Cl <sub>2</sub> ] <sub>2</sub>	1-Octanol	180	18 h	DPPPPent	0
16	[CpRu( <i>p</i> -cymene)]PF <sub>6</sub>	1-Octanol	180	4 d	-	45
17	[CpRu( <i>p</i> -cymene)]PF <sub>6</sub>	1-Octanol	180	7 d	-	75
18	[CpRu( <i>p</i> -cymene)]PF <sub>6</sub>	<b>1-Octanol</b>	<b>180</b>	<b>14 d</b>	-	<b>90</b>

Based on the work of Woodgate *et al.*,<sup>3a</sup> we anticipated that catalysts incorporating a [CpRu]<sup>+</sup> fragment (Cp = cyclopentadienyl) would expedite the S<sub>N</sub>Ar reaction, via η<sup>6</sup>-coordination of chlorotoluene. A number of catalysts were investigated (Table 1, entry 4 – 6). Each catalyst led to conversion into the desired product, providing that high temperatures were employed, with [CpRu(*p*-cymene)]PF<sub>6</sub> performing best. In a solvent screen at 180 °C, 1-octanol was found to give the highest conversion (Table 1, entry 7 – 11). If the reaction mixture was left for 14 days the product conversion reached 90% (Table 1, entry 16 – 18). The effect of additives on the rate of reaction was examined (Table 1, entry 12 – 15). No increase in product conversion was observed for a variety of additives, including base, molecular sieves and ligands. In summary, catalytic S<sub>N</sub>Ar between morpholine and chlorotoluene can be achieved with 90% yield in 1-octanol at 180 °C in 14 days.

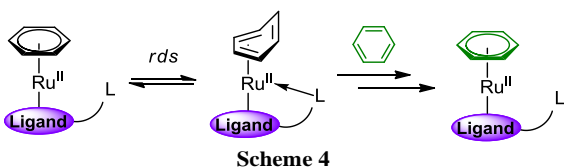


**Scheme 3**

We sought to understand why such long reaction times and high reaction temperatures were required. Under the optimised reaction conditions, positive mode electrospray mass spectrometry (ESI-MS<sup>+</sup>) showed a peak at *m/z* = 344 with the

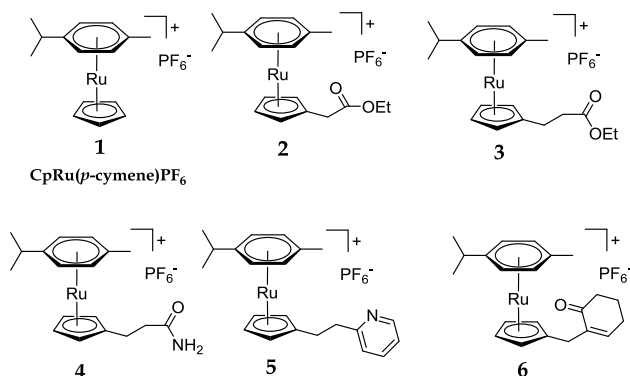
characteristic Ru isotope pattern, corresponding to the η<sup>6</sup>-bound product (complex **1b** in Scheme 3). <sup>1</sup>H-NMR showed a pair of doublets in the range 5.5 – 5.7 ppm, also corresponding to **1b**; no η<sup>6</sup>-bound chlorotoluene (**1a**) was observed by ES-MS<sup>+</sup> or <sup>1</sup>H-NMR. We postulate, therefore, that the reaction occurs via the mechanism shown in Scheme 2 and that arene exchange is the rate limiting step; S<sub>N</sub>Ar is fast so that no bound chlorotoluene is observed but arene exchange is slow so that bound product is observed.

The mechanism by which arene exchange takes place in [Cr(CO)<sub>3</sub>(η<sup>6</sup>-arene)] complexes has been well studied.<sup>16</sup> It was determined that the rate-determining step is an initial change in arene bonding from η<sup>6</sup> → η<sup>4</sup> (Scheme 4). While similar analysis has not been carried out for Ru<sup>II</sup>(η<sup>6</sup>-arene) complexes, we assume the same mechanism for arene exchange and propose that the success found for our catalytic system with 1-octanol as a solvent is due to coordination of the hydroxyl group during the slow η<sup>6</sup> → η<sup>4</sup> step. This maintains an 18 e<sup>-</sup> complex and lowers the activation energy. This theory is supported by the reasonable product conversion in solvents such as cyclohexanol and DMI (Table 1, entry 8 – 9) and the lack of conversion in the non-coordinating solvent *p*-xylene (Table 1, entry 10). It has previously been noted that addition of ketones, such as cyclohexanone, lowers the activation barrier to arene exchange in Cr(0) systems via coordination of the carbonyl lone pair during the η<sup>6</sup> → η<sup>4</sup> process.<sup>17</sup>



To test this theory, several new catalysts were synthesised (**2** – **6**), each incorporating a tether, covalently bound to the Cp ring, capable of coordinating to Ru during the  $\eta^6 \rightarrow \eta^4$  step (Scheme 4).<sup>18</sup> Our expectation was that intramolecular coordination of the tether to the Ru centre would lower the activation barrier to arene exchange and, subsequently, increase the rate of the  $S_NAr$  reaction.

Each complex was synthesised by reaction between  $[Ru(p\text{-cymene})Cl_2]_2$  and the corresponding Cp–tether adduct, in the presence of  $Na_2CO_3$  and ethanol (Scheme 5).<sup>19</sup> The reaction mixtures were treated with  $NH_4PF_6$  to afford complexes **2** – **6**. The formation of the Cp–tether adducts were specific to the various tethers. For complex **2**, CpNa and  $BrCH_2CO_2Me$  were stirred in THF at  $0^\circ C$  to give  $CpCH_2CO_2Me$  in quantitative yield<sup>20</sup> before complexation with  $[Ru(p\text{-cymene})Cl_2]_2$ .<sup>21</sup> Similar protocols were used to synthesise the other Cp–tether compounds. In certain cases, it was necessary to synthesise the electrophilic component before reaction with CpNa. For example, in the synthesis of **5**, 2-Py( $CH_2$ )<sub>2</sub>OH (2-Py = 2-pyridine) was converted into 2-Py( $CH_2$ )<sub>2</sub>OSO<sub>2</sub>Me, prior to reaction with CpNa. Each complex **2** – **6** was purified by column chromatography on silica and fully characterised. For full experimental detail see ESI<sup>†</sup>.



To investigate whether the presence of the various tethers would decrease the energy barrier for the  $\eta^6 \rightarrow \eta^4$  process, exchange experiments were carried out. Each complex was heated in either 1-octanol or cyclohexanone in the presence of 100 equivalents of hexamethylbenzene ( $C_6Me_6$ ) for 16 h. The extent of exchange between *p*-cymene and  $C_6Me_6$  was measured at 3 h and 16 h using ESI-MS<sup>+</sup> (Table 2); calibration of the ESI-MS<sup>+</sup> measurement was required to allow quantitative assessment (see ESI<sup>†</sup>). Relative to the parent complex,  $[CpRu(p\text{-cymene})]PF_6$  (**1**), a moderate increase in the extent of arene exchange was observed for **3** and **6** in cyclohexanone after 16 h (51% and 50%, respectively versus 38% for **1**). Most notable, however, was the complete arene exchange in cyclohexanone for complex **5**, which incorporates a pyridyl tether. In the same solvent, **2** appeared to undergo ester hydrolysis and decarboxylation, giving  $[(CpMe)Ru(p\text{-cymene})]^+$ , indicated by a  $m/z$  peak at 315. This species underwent a similar amount of arene exchange to **1**. Finally, exchange for **4** in cyclohexanone could not be determined due

to a side reaction with the solvent. Similar exchange behaviour was found when 1-octanol was used as the solvent. Complex **5** again displayed the greatest amount of arene exchange. The tether components in **3** and **5** rapidly reacted with the solvent to form octyl esters, which exchanged at a similar rate to the parent complex (**1**). Once again, complex **2** decarboxylated whilst **6** showed a slight reduction in the rate of exchange compared to **1**.

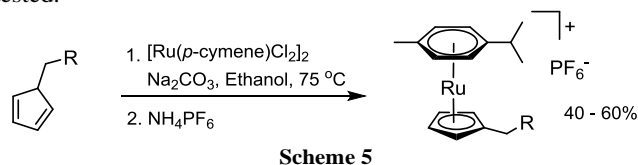
**Table 2** The percentage of arene exchange for complexes **1** – **6**, using either cyclohexanone or 1-octanol as the solvent after 3 and 16 h reaction times.

Complex	Arene Exchange (%)			
	Cyclohexanone		1-Octanol	
	3 h	16 h	3 h	16 h
<b>1</b>	6	38	17	92
<b>2</b>	(6) <sup>a</sup>	(50) <sup>a</sup>	(15) <sup>a</sup>	(84) <sup>a</sup>
<b>3</b>	9	51	13 (18) <sup>b</sup>	90 (88) <sup>b</sup>
<b>4</b>	- <sup>c</sup>	- <sup>c</sup>	(17) <sup>d</sup>	(85) <sup>d</sup>
<b>5</b>	44	100	36	100
<b>6</b>	12	50	12	65

<sup>a</sup> values for decarboxylated **2** ( $[(MeCp)Ru(p\text{-cymene})]^+$ ), which forms under exchange conditions; <sup>b</sup> values for the octyl ester of **3**, which forms in 1-octanol; <sup>c</sup> complex **4** reacts with cyclohexanone, leading to invalid results; <sup>d</sup> values for the octyl ester of **4**, which forms under the exchange conditions.

Having established that arene exchange could be accelerated by the presence of a coordinating tether, we proceeded to calculate half lives ( $t_{1/2}$ ) for the initial *p*-cymene complexes of **1**, **3**, **5** and **6** under the exchange conditions described in Table 2, with cyclohexanone as the solvent. The results confirm that the pyridyl complex **5** exchanges an order of magnitude faster than the parent complex, **1** ( $t_{1/2} = 2.2 \pm 0.1$  h versus  $34 \pm 0.7$  h, see ESI<sup>†</sup> for details). Complexes **3** and **6** each have shorter  $t_{1/2}$  than **1** ( $23 \pm 0.3$  h and  $28 \pm 0.4$  h, respectively), confirming that the rate of arene exchange is accelerated by the coordinating tether.

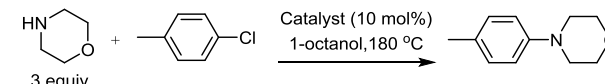
Our hypothesis stated that faster arene exchange will lead to higher conversion in the  $S_NAr$  reaction between morpholine and chlorotoluene. To test this, we carried out the  $S_NAr$  reaction with three of the new potential catalysts, **1**, **3** and **5** (Table 3). As a comparison, **1** with an equivalent of free pyridine was also tested.



After 24 h, each catalyst gave a similar conversion. After 4 d, the catalysts incorporating a tether showed a small improvement in conversion but after 7 d the parent compound returned the highest value, due, in the case of **5**, to degradation of the catalytic species (indicated by loss of Ru species in the mass spectrum). Once again, mass spectrometric analysis after 24 h shows a  $m/z$  peak corresponding to the  $\eta^6$ -bound product

in each of the reactions. Ultimately, it appears that although the rate of arene exchange is accelerated in the *p*-cymene → C<sub>6</sub>Me<sub>6</sub> experiment described above, this acceleration does not translate into a higher conversion in the S<sub>N</sub>Ar reaction. Two explanations present themselves: 1) the η<sup>6</sup>-bound product is more kinetically inert than [CpRu(*p*-cymene)]<sup>+</sup>, so that arene exchange is slower, 2) the η<sup>6</sup>-bound product is more thermodynamically stable than [CpRu(η<sup>6</sup>-chlorotoluene)]<sup>+</sup>, leading to the build-up of the product bound complex and long reaction times. Of course, a combination of both factors may be present. [(η<sup>6</sup>-dimethylaniline)Cr(CO)<sub>3</sub>] is known to be more thermodynamically stable than the chlorobenzene analogue<sup>16a,17</sup> and a similar trend is likely in the case of [CpRu(η<sup>6</sup>-arene)]<sup>+</sup> – the aryl ring in the product (e.g. **1b** in Scheme 3) is more electron rich than *p*-cymene. In an attempt to destabilise the η<sup>6</sup>-bound product, the nucleophile was changed from morpholine to 2,2,6,6-tetramethylmorpholine. Formation of product (either free or bound) was not observed, likely due to the steric influence of the nucleophile. Efforts are ongoing to understand and overcome the limiting factors of the reaction.

**Table 3** S<sub>N</sub>Ar reaction between morpholine and chlorotoluene with catalysts **1**, **3** and **5**. Conversions were determined by <sup>1</sup>H-NMR.



Catalyst	Conversion (%)		
	1 d	4 d	7 d
<b>1</b>	25	45	75
<b>3</b>	25	59	72
<b>5</b>	26	55	54
<b>1 + Py</b>	24	59	65

## Conclusions

In conclusion, we have demonstrated for the first time catalytic S<sub>N</sub>Ar of unactivated aryl chlorides, albeit at high temperatures and with long reaction times. In an attempt to move to milder reaction conditions, several new Ru complexes were synthesised, incorporating tethers capable of lowering the activation barrier to dissociation. Despite achieving an 18-fold increase in the rate of arene exchange, the rate of S<sub>N</sub>Ar was not significantly increased in our test reactions. Once an efficient catalytic system based on η<sup>6</sup>-arene exchange is realised, we envisage many applications in efficient organic synthesis.

## Notes and references

<sup>a</sup>Department of Chemistry, University of Bath, Claverton Down, Bath, BA2 7AY (UK).

<sup>b</sup>Department of Chemistry, Durham University, South Road, Durham, DH1 3LE (UK).

\*E-mail: james.walton@durham.ac.uk.

†Electronic Supplementary Information (ESI) available: See DOI: 10.1039/b000000x/

- (a) C. Liu, H. Zhang, W. Shi and A. Lei, *Chem. Rev.*, 2011, **111**, 1780; (b) C. S. Yeung, V. M. Dong, *Chem. Rev.*, 2011, **111**, 1215; (c) W. Lei, H. Cao, H. Zhang, H. Zhang, K. H. Chung, C. He, H. Wang, F. Y. Kwong, A. Lei, *J. Am. Chem. Soc.*, 2010, **132**, 16737.
- (a) T. M. Koenig and D. Mitchell, *Tetrahedron Lett.*, 1994, **35**, 1339; (b) J. R. Rodriguez, J. Agejas and A. B. Bueno, *Tetrahedron Lett.*, 2006, **47**, 5661.
- (a) R. C. Cambie, G. R. Clark, S. L. Coombe, S. A. Coulson, P. S. Rutledge and P. D. Woodgate, *J. Organometal. Chem.*, 1996, **507**, 1; (b) A. J. Pearson, J. G. Park, S. H. Yang and Y.-H. Chuang, *J. Chem. Soc., Chem. Commun.*, 1989, 1363.
- K. Kamikawa, S. Kinoshita, M. Furusyo, S. Takemoto, H. Matsuzaka and M. Uemura, *J. Org. Chem.*, 2007, **72**, 3394.
- (a) R. C. Cambie, S. J. Janssen, P. S. Rutledge and P. D. Woodgate, *J. Organomet. Chem.*, 1991, **420**, 387; (b) A. J. Pearson, J. G. Park, and P. Y. Zhu, *J. Org. Chem.*, 1992, **57**, 3585.
- A. J. Pearson and H. Shin, *J. Org. Chem.*, 1994, 2314.
- (a) E. L. Velarde, R. A. Stephen, R. N. Mansour, L. T. Hoang and D. J. Burkey, *J. Am. Chem. Soc.*, 2003, **125**, 1188; (b) Y. K. Chung, H. S. Choi, N. G. Connelly and D. A. Sweigart, *J. Am. Chem. Soc.*, 1982, **104**, 4245.
- (a) A. Schlüter, K. Bieber and W. S. Sheldrick, *Inorg. Chim. Acta.*, 2002, **340**, 35; (b) S. Chen, V. Carperos, B. Noll, R. J. Swope and M. R. DuBois, *Organometallics*, 1995, **14**, 1221.
- P. Ricci, K. Krämer, X. C. Cambeiro and I. Larrosa, *J. Am. Chem. Soc.*, 2013, **135**, 13258.
- (a) J. W. Janetka and D. H. Rich, *J. Am. Chem. Soc.*, 1997, **119**, 6488; (b) F. C. Pigge, J. J. Coniglio and N. P. Rath, *J. Org. Chem.*, 2003, **69**, 1161.
- (a) W. Braun, B. Calmuschi-Cula, U. Englert, K. Höfener, E. Alberico and A. Salzer, *J. Organometal. Chem.*, 2008, 2065; (b) R. P. Houghton, M. Voyle and R. Price, *J. Organometal. Chem.*, 1983, **259**, 183.
- M. F. Semmelhack, A. Chlenov and D. M. Ho, *J. Am. Chem. Soc.*, 2005, **127**, 7759.
- R. P. Houghton and M. Voyle, *J. Chem. Soc., Perkin Trans. 1*, 1984, 925.
- (a) M. Otsuka, K. Endo and T. Shibata, *Chem. Commun.*, 2010, **46**, 336; (b) M. Otsuka, H. Yokoyama, K. Endo and T. Shibata, *Synlett*, 2010, **17**, 2601.
- (a) J. Takaya and J. F. Hartwig, *J. Am. Chem. Soc.*, 2005, **127**, 5756; (b) M. Otsuka, H. Yokoyama, K. Endo and T. Shibata, *Org. Biomol. Chem.*, 2012, **10**, 3815.
- (a) T. G. Traylor, K. J. Stewart and M. J. Goldberg, *J. Am. Chem. Soc.*, 1984, **106**, 4445; (b) T. G. Traylor, K. J. Stewart and M. J. Goldberg, *Organometallics*, 1986, **5**, 2062.
- C. A. L. Mahaffy and P. L. Pauson, *J. Chem. Res. Synop.*, 1979, 126.
- A similar approach has been shown to increase arene exchange in Cr(η<sup>6</sup>-arene) complexes, see ref. 2b and a) E. P. Kündig, M. Kondratenko and P. Romanens, *Angew. Chem. Int. Ed.*, 1998, **37**, 3146. (b) M. F. Semmelhack, W. Seufert and L. Keller, *J. Organometal. Chem.*, 1982, **226**, 183.
- B. M. Trost and C. M. Older, *Organometallics*, 2002, **21**, 2544.
- P.-H. Yeh, Z. Pang and R. F. Johnson, *J. Organometal. Chem.*, 1996, **509**, 123.
- Transesterification to form the ethyl ester took place under the reaction conditions.