

Food & Function

Accepted Manuscript



This is an *Accepted Manuscript*, which has been through the Royal Society of Chemistry peer review process and has been accepted for publication.

Accepted Manuscripts are published online shortly after acceptance, before technical editing, formatting and proof reading. Using this free service, authors can make their results available to the community, in citable form, before we publish the edited article. We will replace this *Accepted Manuscript* with the edited and formatted *Advance Article* as soon as it is available.

You can find more information about *Accepted Manuscripts* in the [Information for Authors](#).

Please note that technical editing may introduce minor changes to the text and/or graphics, which may alter content. The journal's standard [Terms & Conditions](#) and the [Ethical guidelines](#) still apply. In no event shall the Royal Society of Chemistry be held responsible for any errors or omissions in this *Accepted Manuscript* or any consequences arising from the use of any information it contains.

Inhibition of low-grade inflammation by anthocyanins from grape extract in an *in vitro* epithelial-endothelial co-culture model.

Sabine Kuntz^{a,b}, Heike Asseburg^b, Sebastian Dold^c, Andreas Römpf^c, Bettina Fröhling^d, Clemens Kunz^b and Silvia Rudloff^{a,b}

^a Department of Pediatrics, Feulgenstrasse 12, University of Giessen

^b Institute of Nutritional Science, Wilhelmstrasse 20, University of Giessen

^c Institute of Inorganic and Analytical Chemistry, Schubertstrasse 60, University of Giessen,

^d Institute of Enology and Beverage Research, Section of Wine Analysis and Beverage Technology, Von-Lade-Strasse 1, Geisenheim Research Center

CORRESPONDENCE

Dr. Sabine Kuntz, Institute of Nutritional Science, Wilhelmstrasse 20, Justus-Liebig-University Giessen, 35392 Giessen (Germany)

E-Mail: Sabine.Kuntz@ernaehrung.uni-giessen.de

Phone: +49-641-9939044

Fax: +49-641-9939049

KEYWORDS

Grapes • anthocyanins • low-grade inflammation • *in vitro* co-culture model

ABSTRACT

Background: Anthocyanins (ACNs) are the most prevalent flavonoids in berries and their health promoting effects on vascular functions are still discussed. The aim of the present study was to identify the anti-inflammatory effect of ACNs on activated human umbilical vein endothelial cells (HUVECs) after their transport across an epithelial monolayer. **Study design:** We established a transwell epithelial-endothelial co-culture system with Caco-2/HT29-B6 cells mimicking the intestinal layer and HUVECs as endothelial cells mimicking the vascular layer. Caco-2 were seeded alone (100%) or together with HT29-B6 cells (10 and 20%) on transwell inserts in order to simulate different metabolization sides of the gut. ACNs as well as malvidin-3-glucoside (M3G) were applied to the luminal compartment of the transwell-system. Transport and degradation rates were determined by high performance liquid chromatography with ultraviolet detection (HPLC-UV) or by ultra-PLC coupled to mass spectrometry (UPLC-MS). After 4 hours incubation time, co-cultured HUVECs were used immediately (short-term incubation) or after 20 hours (long-term incubation). Thereafter, HUVECs were stimulated for 3 hours with 1 ng/mL TNF- α to mimic a low-grade or 10 ng/mL to mimic a high-grade inflammation. Afterwards, 1.) leukocyte adhesion, 2.) expression of cell adhesion molecules (ICAM-1, VCAM-1 and E-selectin) and 3.) cytokine expression and secretion (IL-6 and IL-8) were determined using flow cytometry and real-time PCR. **Results:** Degradation and incubation studies revealed that ACNs were differently degraded depending on the ACN structure and the seeding densities. Incubation of ACNs and M3G to Caco-2 cells (100%) led to a fast decrease, which was not observed when HT29-B6 cells were co-cultured (10 and 20%). Concomitantly, anti-inflammatory effects were only observed using 100% Caco-2 cells, whereas mixtures of Caco-2 and HT29-B6 cells failed to induce an effect. ACN extract and M3G significantly attenuated TNF- α stimulated low-grade leukocyte adhesion, expression of adhesion molecules E-

selectin, VCAM-1 and ICAM-1 and cytokine expression and secretion (IL-8 and IL-6) as well as NF- κ B mRNA expression. No effects were observed with high TNF- α (10 ng/mL) or after short-term incubation (4 hours). **Conclusions:** ACNs in physiological concentrations reached the serosal compartment and reduced inflammation-related parameters, which were related to the initial steps during the pathogenesis of atherosclerosis.

INTRODUCTION

Cardiovascular diseases (CVD) are the leading cause of morbidity and mortality in the Western population and it was postulated that the consumption of fruit and vegetables has been postulated to be associated with reduced risk for CVD.^{1,2} Despite the controversial results from epidemiological observations or intervention studies, current research has been focusing on the so-called low-grade inflammation (LGI), which is considered to be the first step in the pathogenesis of several inflammation associated diseases such as atherosclerosis, obesity, diabetes and cancer.^{3,4} There are many causes for a LGI with lifestyle factors playing a major role.^{5,6,7} At first, dietary factors such as a high fat diet, low dietary fiber or polyunsaturated fat are associated with LGI.⁸ LGI is characterized by enhanced circulating cytokines (TNF- α , IL-6), chemokines (IL-8) or acute phase proteins such as CRP (C-reactive peptide) leading to an activation of vascular endothelium and impairment. The activation of endothelial cells during inflammatory processes is a well-known multistep process in which multiple cell adhesion molecules are expressed in a time- and concentration-dependent manner.⁹ Thus, after endothelial activation, cell adhesion molecules such as E-selectin, mediating the first cell-cell interactions between leukocytes and the vascular endothelium and molecules of the immunoglobulin superfamily (intercellular cell adhesion molecule-1 (ICAM-1) and vascular cell adhesion molecule-1 (VCAM-1)), responsible for the firm adhesion and transmigration of the cells to the

extravasal space, have been reported to play a major role in the initial steps of atherosclerotic pathogenesis.^{10,11,12} As a consequence, prolonged and chronic activation of the vascular epithelium may lead to thrombotic vessel closure and plaque rupture.^{13,14} Recently, it has been shown that consumption of blueberries improved endothelial dysfunction and reduced inflammatory markers in subjects with increased cardiovascular risk.¹⁵ Furthermore, ingestion of bilberries by individuals with features of metabolic syndrome was associated with a reduction of LGL.¹⁶ Such effects of fruits, especially berries have been mainly attributed to the presence of polyphenols and their anti-oxidative, anti-inflammatory and anti-adhesive effects, and may exert positive effects on vascular function.^{3,17} Flavonoids are the most prevalent group of polyphenols in fruits, with flavonols, flavanones and ACNs as the most important subgroups.¹⁸ For example, the flavanones naringenin and hesperitin as well as their chemically synthesized glucuronides and sulfates were able to reduce monocyte adhesion to HUVEC monolayers under low-grade inflammation.¹⁹ This could also be observed using flavonol glucuronides like quercetin 3'-sulfate, quercetin 3-glucuronide or 3'-methylquercetin 3-glucuronide.²⁰ In contrast to flavonoids, effects of ACNs were only measured using single compounds and/or used in supraphysiological concentrations. However, ACNs can be directly absorbed in the intestine without prior chemical modification or after deglycosylation and could be further metabolized by phase II enzyme into methyl, glucuronide, or sulfate conjugates in the small intestine and in the liver.²¹ Keeping in mind that the concentration of glycosides of ACNs were extremely low or absent in plasma and that intense metabolization in the intestinal epithelial cells generated phase II metabolites (glucuronidation, sulphation and methylation), it seems conceivable that metabolites are the relevant bioactive components. Furthermore, there is increasing evidence that degradation products rather than the parental compounds were responsible for the health effects. This involves the formation of phenolic and aromatic acids such as hydroxybenzoic or

hydroxycinnamic acids, which could also have an endothelium protecting effect.^{22,23} The aim of the present study was to investigate degradation, transport and metabolization of ACNs from an ACN-rich grape extract as well as malvidin-3-glucoside (M3G) and protocatechuic acid (PCA) using Caco-2 cells alone as an intestinal monolayer or in combination with HT29-B6 cells to mimic different absorption sites of the gut for ACNs. The establishment of an *in vitro* co-culture model (epithelial and endothelial cells) allowed to investigate effects of ACNs on low- and high-grade inflammation events such as changes in adhesion, or the expression of adhesion molecules (E-selectin, VCAM-1 and ICAM-1), cytokines (IL-6 and IL-8) and regulator proteins (NF- κ B) after crossing the intestinal layer.

METHODS AND MATERIALS

Materials

M3G was purchased from Carl Roth GmbH (Karlsruhe, Germany), PCA from Sigma-Aldrich (Taufkirchen, Germany), TNF- α from R&D (Heidelberg, Germany), Calcein-AM and human plasma fibronectin from Invitrogen (Heidelberg, Germany). Cell culture media and supplements for human umbilical vein endothelial cells (HUVECs) were obtained from Promocell (Heidelberg, Germany), and those for Caco-2 cells and HT29-B6 cells from Invitrogen (Heidelberg, Germany). All chemicals were with analytical grade and cell culture tested.

Methods

Anthocyanin-rich grape extract. The ACN-rich grape extract was produced at the University Geisenheim (Section of Wine Analysis and Beverage Technology) and made from red grapes (grape varieties *Dakapo*). Briefly, grapes were extracted in a press and the resulting juice was separated and pasteurized. The grape juice was loaded onto a pilot glass column (Kronlab/Schott,

200×750 mm), filled with 16 L of adsorber resin (Resindion/Mitsubishi, Mailand). Water-soluble juice constituents like sugars, organic acids and minerals were washed out with two bed volumes of distilled water. The first eluate was slightly colored due to low ACN-levels. The ACNs and colorless polyphenols were eluted with two bed volumes of 96% ethanol. The ethanolic fraction was concentrated by a rotary evaporator and lyophilized. ACNs were analyzed by HPLC-PDA/ESI-MS (high-performance liquid chromatography/photo diode array detection/electrospray ionization mass spectrometry); their contents are listed in **Table 1**.

Table 1. Anthocyanins in the grape extract. Extract was analyzed by HPLC-PDA/ESI-MS; and ACN values are given as mg/L and $\mu\text{mol/L}$.

| | Extract [mg/L] | Extract [$\mu\text{mol/L}$] |
|--|-------------------|----------------------------------|
| malvidin-3-glucosid | 767.6 | 1555.6 |
| malvidin-3-(6''-O-acetyl)-glucosid | 13.0 | 24.3 |
| Σ malvidin | 780.6 | 1579.9 |
| peonidin-3-glucosid | 345.2 | 744.9 |
| peonidin-3-(6''-O-acetyl)-glucosid | 137.9 | 272.8 |
| Σ peonidin | 483.1 | 1017.7 |
| petunidin-3-glucosid | 164.5 | 343.1 |
| petunidin-3-(6''-O-acetyl)-glucosid | 22.6 | 43.3 |
| petunidin-3-rutinosid | 74.3 | 118.8 |
| Σ petunidin | 261.4 | 505.2 |
| delphinidin-3-glucosid | 173.2 | 372.2 |
| delphinidin-3-(6''-O-acetyl)-glucosid | 20.6 | 40.6 |
| Σ delphinidin | 193.8 | 412.8 |
| cyanidin-3-glucosid | 47.2 | 105.0 |
| Σ cyanidin | 47.2 | 105.0 |
| Sum ACNs | 1766.1 | 3620.6 |

HPLC-UV and UPLC-MS analysis A capillary HPLC (Summit, Dionex, Germany) system equipped with a pump (P580 A HPG), an autosampler (ASI-100T Automated Sample Injector) and a 100mm x 1mm ID, 5 μm particle size NUCLEOSIL 300 C18 reversed phase column

(Macherey-Nagel GmbH + Co. KG, Germany) as well as an UV detector (UVD 340U) was used for analysis of apical cell culture compartments. Detection was carried out at a wavelength of 520 nm for anthocyanins and 320 nm for phenolic acids. Mobile phases consisted of 5 % v:v formic acid in water (solvent A) and methanol (solvent B). The solvent gradient was 5 % B at 0 to 2 min, 20 % B at 10 to 15 min, 30 % B at 30 min, 37 % B at 35 to 40 min, 40 % B at 41 to 43 min, 95 % B at 50 to 62 min and 5 % B at 70 to 80 min at a flow rate of 70 μ L/min. Injection volume was 15 μ L.

UPLC separation was performed using an UltiMate 3000 RSLC (Rapid Separation LC) (Dionex, Idstein, Germany) system equipped with a pump (HPG 3200 RS), an autosampler (WPS-3000 TRS) and a 100 mm x 2.1 mm ID, 2.6 μ m particle size, Kinetex reversed phase (C18) column (Phenomenex, Aschaffenburg, Germany). Mobile phases consisted of 0.7 % v:v formic acid in water (solvent A) and methanol (solvent B). The solvent gradient was 2 % B at 0 to 0.5 min, 7 % B at 1 min, 15 % B at 5 min, 40 % B at 10 min, 70 % B at 13 to 16 min at flow rate of 400 μ L/min (p(max) = 550 bar). Injection volume was 40 μ L. The UPLC system was coupled to an FT-ICR MS (Fourier Transform Ion Cyclotron Resonance Mass Spectrometer, Thermo Fisher Scientific, Bremen, Germany) by an electrospray ion source. Measurements were performed in positive ion mode. Capillary temperature was set to 350° C spray voltage in positive ion mode was 4.4 kV. Mass spectra were acquired in the range of m/z = 200-850 for positive ion mode.

Epithelial and endothelial cells and culture conditions.

Intestinal cells (Caco-2 and HT29-B6 cells). The human colon adenocarcinoma cell line Caco-2 ATCC[®]HTB37[™] was obtained from ATCC (American Type Culture Collection, Manassas,

USA) and HT29-B6 cells were a gift from Prof. Dr. Martin Diener (Institute for Veterinary Physiology and Biochemistry, Justus-Liebig-University Giessen). Intestinal absorption is a complex process accomplished by the epithelium composed of a variety of different cell types. Intestinal cell culture models, especially Caco-2 and HT29-B6 cell lines derived from human colon adenocarcinoma, are regarded as valid model systems for studying transport kinetics of polyphenols.^{24,25,26} After reaching confluence, Caco-2 cells spontaneously start to differentiate and develop microvilli with typical brush border enzymes such as lactase, sucrose and alkaline phosphatase. Approximately, at day 14, they acquire a phenotype of mature small intestinal cells.^{27,28,29} HT29-B6, a subclone of the human colorectal cancer cell line HT29, grows as differentiated and polarized cells with properties of chloride and mucus secreting crypt cells. Grown on permeable membranes, both cell lines were able to form stable, dense polarized monolayers impermeable to most macromolecules for more than two weeks and exhibits transport and barrier functions typical of human epithelium.^{30,31} Under these conditions, both cell types are suitable for studying aspects of intestinal transport and absorption *in vitro*. Caco-2 and HT29-B6 cells were routinely grown in 75 cm² culture flasks using Dulbecco's Eagle's Minimum Essential Medium (DMEM) at pH 7.4 with 1 % GlutsMAX™, 1% nonessential amino acids (NEAA), and 20% fetal calf serum (FCS). Both cell lines were maintained in a humidified atmosphere of 5% CO₂ in air at 37°C. Stock passages were subcultured every 3-4 days before reaching 80-90% confluence. For incubation studies, pre-confluent cells were trypsinized using a 0.25% (w/v) trypsin/0.53 mM EDTA solution; 1 x 10⁴ Caco-2 cells (100%) were seeded per 24-well transwell insert containing a polycarbonate membrane (0.4 μm pore size, Beckon-Dickenson, Germany) and placed in a 24-well plate. In order to mimic colonic-like conditions, Caco-2 cells were mixed with HT29-B6 cells in a ratio of 90:10 and 80:20%. Cells were allowed to grow to confluence (2 days) and thereafter to differentiate to absorptive enterocytes within 21

days (n=3). The culture medium was changed every 2 or 3 days at the apical (0.5 mL) and basolateral side (1.5 mL).

Transepithelial electrical resistance. For all transport experiments, the transepithelial electrical resistance (TEER), a measure of the integrity of polarized epithelial cell monolayers was determined before and after the experiments by using a Millicell[®] ERS volt-ohmmeter (Millipore Corporation, Bedford, MA, USA). TEER readings were taken at 37°C after equilibrium. A TEER value $\geq 550 \Omega \times \text{cm}^2$ was used as an indicator for an intact epithelial layer suitable to be used for anthocyanin transport studies.

Preparation of endothelial cells. HUVECs from pooled donors (from up to four different umbilical cords) were obtained from Promocell GmbH (Heidelberg, Germany). These cells were cultured on 75 cm² flasks at 37°C, 5% CO₂ in MCDB 131 (Promocell GmbH) supplemented with 10% FCS (Biochrom AG, Berlin, Germany), 1 µg/mL EGF and 30 µg/mL ECGF (Promocell GmbH). After reaching 80% confluence, cells were passaged in a 1:3 split ratio with trypsin/EDTA (0.05%/0.01%) solution and were used at passage number 2-4. Trypsinized cells (1×10^5) were seeded on fibronectin coated 24-well plates (Biochrom KG, Berlin, Germany) and allowed to growth until they reached 100% confluence (2 days). Confluent HUVECs on fibronectin-coated 24-well plates were used for co-culture experiments.

Establishment of the in vitro co-culture system. In order to investigate the anti-inflammatory effects of ACNs from a grape extract, M3G and PCA on endothelial cells, we developed an *in vitro* co-culture system in which human intestinal epithelial cells (Caco-2/HT29-B6) and

HUVECs were able to communicate with each other (**Figure 1**). In order to mimic the different absorption and metabolization sites in the colon, Caco-2 cells were grown alone (100%) or in combination with HT29-B6 cells (90:10 and 80:20%) on semipermeable filters over 21 days to differentiate and develop an enterocyte-like phenotype. After differentiation, transwell filters were inserted onto a 24-well plate where endothelial cells were cultivated on the bottom of the 24-well cavity. The upper compartment (insert) with epithelial cells was exposed to target substrates for 4 hours. In order to ensure an intact intestinal monolayer during the time of the experiment, the transepithelial electrical resistance (TEER) was monitored before and at the end of the incubation experiments. Only epithelial monolayers exerting TEER values above $550 \Omega/\text{cm}^2$ were used for incubation experiments. Thereafter, inserts were removed and HUVECs were stimulated immediately (short-term incubation) or after 20 h of cultivation (long-term incubation) with TNF- α . To mimic low-grade and high-grade inflammation, HUVECs were incubated for 3 hours with 1 ng/mL and 10 ng/mL TNF- α , respectively. After TNF- α stimulation, we determined a) leukocyte adhesion to HUVECs, b) expression of cell adhesion molecules, c) expression of NF- κ B and d) expression and secretion of the cytokines IL-6 and IL-8 in the supernatants or in HUVECs.

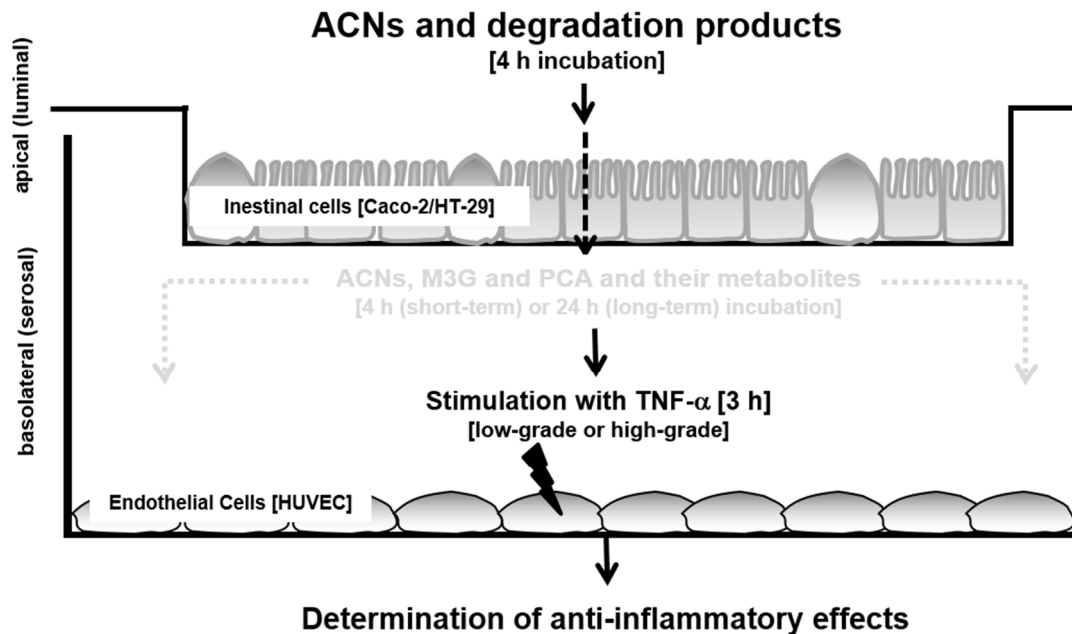


Figure 1. Determination of the anti-inflammatory effects of ACNs and metabolites in an *in vitro* epithelial-endothelial co-culture cell system.

Cell viability and cytotoxicity.

Intestinal Caco-2 and HT29-B6 cells. Under the following conditions, we approved to cultivate side-by-side growing cells forming an intact layer with Caco-2 cells and HT29-B6 cells: (1) the activity of alkaline phosphatase (AP) is expressed at different levels in both cell types. In proliferating cells, AP activity of HT29-B6 cells was found to be higher than that of HT29 control cells. For example, AP activity of HT-29 control cells, HT29-B6 and Caco-2 cells was $0.17 \pm 0.04/h/10^6$ cells, $0.45 \pm 0.012/h/10^6$ cells and $0.99 \pm 0.14/h/10^6$ cells, respectively. After 21 day cultivation on filters, AP activity levels of Caco-2 cells were $14.80 \pm 2.25/h/10^6$ cells, whereas co-culturing HT29-B6 resulted in AP activities of $13.75 \pm 0.41/h/10^6$ cells (ratio 9:1) or $12.43 \pm 0.67/h/10^6$ cells (ratio 8:1). In contrast, confluent HT29-B6 cells on filters for 21 days revealed AP activity levels of $1.07 \pm 0.24/h/10^6$ cells, reflecting the lower differentiation grade in

comparison to Caco-2 cells; however, they were not able to generate an intact monolayer [data not shown], (2) nearly identical population doubling times of HT29-B6 and Caco-2 cells (21.3 ± 1.3 h and 24.5 ± 2.1 h) assured that after 24 hours a confluent monolayer and stable cell ratios could be attained, (3) cytotoxicity was not induced in HT29-B6 cells since cell viability measurements using the Guava[®] ViaCount[™] assay showed that there was no significant difference in the number of non-viable cells (apoptotic and necrotic) between Caco-2 and HT29-B6 cells cultured alone (21 days) or in a ratio of 80:20 [data not shown].

Intestinal cells. Cell counts and cell viability were determined by using the Guava[®] ViaCount[™] assay on the Guava EasyCyte flow cytometer (Millipore Merck, Billerica, MA, U.S.A.). In a pretest we measured HUVEC cell viability before (0 h) and after incubation of HUVECs with cell media from the basal compartment (4 h) to ensure viability of HUVECs during co-cultivation with intestinal cells. In all cases, viability remained between 83.3–88.0 % and non-viable remained between 12.0–16.7 % (apoptotic (7.3-8.9 %) and necrotic (4.7-7.3 %)). Furthermore, after each incubation experiment (short-term and long-term incubation and TNF- α -stimulation, HUVEC cell viability were tested concomitantly with the expression of cell adhesion molecules (see “*Analysis of cell adhesion molecules by FACS analysis*”) to ensure that there was no cytotoxic effect by possible metabolites from test substances.

Degradation and incubation studies. In a first set of experiments, degradation rates of ACNs incubated on transwell filters without cells were determined at pH 7.2 and pH 2.0. ACNs (50 $\mu\text{mol/L}$ M3G equivalents) and M3G (50 $\mu\text{mol/L}$) in HUVEC culture media were applied into the transwell filters; after 30, 60, 90, 120 and 240 min incubation, solutions were removed, acidified with 1% formic acid to prevent further degradation and then immediately stored at -80°C until ACN quantification analysis by HPLC-UV. For incubation studies, the medium from

differentiated intestinal cells on transwell filters was decanted and the inserts with cells were carefully washed with HUVEC medium at 37°C and transferred to a 24-well plate. Apical and basolateral compartments were filled with 0.5 mL and 1.5 mL HUVEC medium, respectively, for equilibration. After equilibration (30 min, 37 °C), 0.5 mL ACNs from the ACN-rich extract (50 µmol/L M3G-equivalents) or M3G (50 µmol/L) were added to the apical compartment of the transwell inserts containing a monolayer of Caco-2 cells or Caco-2/HT29-B6 cells; 1.5 mL HUVEC medium was added to the basal compartment. Further analysis were performed as described for the degradation experiments. In preparation for UPLC-MS, basal media (1.5 mL) were subjected to an octadecylsilane solid-phase extraction (SPE) cartridge (HLB; Waters Corp., Milford, MA) following the method described previously.³²

In a second set of experiments, intestinal cell inserts were removed after 240 min of incubation and basolateral compartments containing HUVECs grown on fibronectin were immediately stimulated for 3 hours using 1 ng/mL or 10 ng/mL TNF- α to mimic low-grade or high grade inflammation (short-term incubation). To determine long-term effects of ACNs, HUVECs were cultured for further 20 hours and thereafter stimulated with both TNF- α concentrations (see Figure 1).

Cell adhesion assay. In order to evaluate leukocyte adhesion to HUVECs, we isolated leukocytes from blood as described previously.³³ To stain viable cells, 0.5×10^6 cells/mL leukocytes were incubated with 1 µmol/L calcein-AM solution (Invitrogen, Darmstadt, Germany) for 15 min and washed twice with GIBCO[®] Hank's Balanced Salt Solution (HBSS) to remove extracellular calcein-AM solution. After centrifugation (5 min, 1500 x g) cells were resuspended in 600 µL HBSS and immediately used for adhesion studies. Therefore, the medium from the TNF- α

activated HUVEC cells of the co-culture system was removed and replaced with 600 μ L HBSS containing calcein-dyed leukocytes. After 5 min incubation under shaking (150 rpm/min, 37°C), leukocyte suspension was carefully aspirated, and the wells were washed twice with HBSS to eliminate leukocytes which were only loosely attached to endothelial cells. Firm adhesion was recorded by measuring the fluorescence of calcein-dyed attached cells at 538 nm after excitation at 485 nm using the fluorescence multiwell-plate reader Fluoroskan Ascent (Labsystems, Bornheim-Hersel, Germany). Cell adhesion was determined based on a calibration curve using 1×10^3 to 1×10^6 cells per well (n=3).

Analysis of mRNA of cell adhesion molecules and cytokines by semi-quantitative real-time

PCR. mRNA from HUVECs from the incubation experiments described above was isolated using the Dynabeads mRNA DIRECT™ kit (Life Technologies GmbH, Darmstadt, Germany) according to the manufacturer's instructions. cDNA synthesis was carried out in a reaction volume of 20 μ L containing 500 ng RNA, 50 mM Tris-HCl (pH 8.3), 75 mM KCL, 3 mM MgCl₂, 10 mM dithiothreitol, 100 ng oligodeoxythymidine 15 primer, 500 μ mol/L of each deoxynucleotide triphosphate (dATP, dGTP, dCTP and dTTP), 10 U ribonuclease inhibitor, and 200 U MuLV (Moloney murine leukemia virus reverse transcriptase); all reagents were obtained from Invitrogen (Invitrogen, Karlsruhe; Germany). The samples were incubated at 37°C for 60 min, followed by an incubation at 95°C for 15 min. mRNA expression of target genes was measured in HUVECs using the 7500 Real-Time PCR System (Applied Biosystems, Darmstadt, Germany). Gene-specific primers and probes used in this study (**Table 2**) were designed using the sequences accessible in the NCBI Reference Sequence and the Primer Express software 3.0 (Applied Biosystems, Foster City, CA, USA). All probes were labeled with the fluorescent dyes 5-FAM (6-carboxy-fluorescein) as reporter and 3-TAMRA (6-carboxy-tetramethyl-rhodamine) as

quencher. Primers and probes were purchased from Sigma (Geno-Sys, Deisenhofen, Germany). A total reaction volume of 25 μ L contained 1 x reaction buffer with 250 nM of each primer, 150 nM probe and 1 μ L cDNA. The PCR running conditions were as follows: 10 min of initial denaturation at 95°C, followed by 45 cycles of 30 sec at 95°C, 30 sec at 58°C for annealing, 30 sec at 60°C, and 15 sec at 75°C. Samples were run in triplicates. Real-time RT-PCR results are shown as the relative expression level of normalized samples [Δ cycle threshold (C_T)] in relation to the expression of the calibrator sample ($2^{-\Delta\Delta C_T}$). The C_T value refers to the cycle number at which the PCR plot crosses the threshold line, ΔC_T is calculated by subtracting the C_T value of the corresponding housekeeper gene β -actin control (endogenous reference control) from the specific C_T value of the target, and $\Delta\Delta C_T$ is obtained by subtracting the ΔC_T of each experimental sample by the ΔC_T of the calibrator sample.

Table 2. Sequence of primer and probes used for real-time PCR.

| Gene | GenBank accession no | Primer and TaqMan probe sequence |
|------------|----------------------|--|
| E-selectin | M30640 | Forward primer: 5'- CCCGTGTTTGGCACTGTGT -3' Reverse primer: 5'- GCCATTGAGCGTCCATCCT TaqMan probe: 5'- CAAGTTCGCCTGTCCTG-Tamra-3' |
| VCAM-1 | M60335 | Forward primer: 5'- GGGAAAGCCGATCACAGTCAA -3' Reverse primer: 5'- ATGAGATGATCTCCTTTTCAGTAAGTCTATC -3' TaqMan probe: 5'-TCAGTTGCTGATGTATACCCATTTGACAGGC-Tamra-3' |
| ICAM-1 | NM_000201 | Forward primer: 5'- GCAGACAGTGACCATCTACAGCTT -3' Reverse primer: 5'- CTTCTGAGACCTCTGGCTTCGT -3' TaqMan probe: 5'- CCGGCGCCCAACGTGATTCT-Tamra-3' |
| IL-6 | M54894 | Forward primer:5'- GGTACATCCTCGACGGCATCT -3' Reverse primer: 5'- GTGCCCTTTTGCTGCTTTTAC -3' TaqMan probe: 5'-Fam-TGTTACTCTTGTTACATGTCTCCTTTCTCAGG GCT-Tamra-3' |
| IL-8 | M28130 | Forward primer: 5'- AGCTGGCCGTGGCTCTCT -3' Reverse primer: 5'- TTTAGCACTCCTTGGCAAACTG -3' TaqMan probe: 5'- Fam-CAGCCTTCCTGATTTCTGCAGCTCTGTG-Tamra-3' |
| NF-kB | NM_62399 | Forward primer: 5'- AGCACAGATACCACCAAGACCC-3' Reverse primer: 5'- CCAGGGAGATGCGCACTG-3' |

| | | |
|---------|-----------|--|
| | | TaqMan probe: 5'-Fam-CATCAAGATCAATGGCTACACGGACCAGG-Tamra-3 |
| β-actin | NM_002046 | Forward primer: 5'-CCACATCGCTCAGACACCAT-3' Reverse primer: 5'-GTGACCAGGCGCCCAATA-3' TaqMan probe: 5'-Fam-AGGTCTGGAGTCAACGGATTTGG-Tamra-3 |

Analysis of cell adhesion molecules by FACS analysis. After the 3-hours stimulation of HUVECs, cells were washed twice with cold PBS, removed by careful trypsinization and centrifuged (150 x g, 5 min), followed by two washes with FACS buffer (Ca²⁺/Mg²⁺-free PBS with 0.5% FCS) and resuspended in 520 μL FACS buffer. 20 μL aliquots were used to measure HUVECs cell viability with the Guava ViaCount kit (Millipore Merck, Billerica, MA, U.S.A.) according to the manufacturer's instructions using the Guava easyCyte™ flow cytometer (Millipore Merck, Billerica, MA, U.S.A.). Then, 500 μL of cell suspension were incubated with FS (fluorescein) -conjugated mouse monoclonal anti-human ICAM-1 (CD54) and anti-human E-selectin (CD62E) as well as with PE (phycoerythrin) -conjugated mouse monoclonal anti-human VCAM-1 (CD106) (R&D, Wiesbaden-Nordenstadt, Germany) for 1 hour at 4°C. The isotype control for PE (mouse IgG_{2a} isotype control PE) and FS (mouse IgG₁ isotype control FS) was used as a negative control. For each test, 10 μL PE- or FS-conjugated antibodies were incubated with cells from a 24-well cavity. Thereafter, cells were analyzed by flow cytometry; quantification was performed using the CytoSoft Version 4.2.1 software (Guava Millipore) by comparing the mean fluorescence intensities (MFI). MFI of the stimulated cells was set to the maximum value measured in the first experiment (n=3).

Cytokine determination. The secretion of the cytokines IL-6 and IL-8 present in the supernatant of TNF-α stimulated HUVECs was measured using RayBio immunoassays (BioCat GmbH, Heidelberg, Germany) and the Digiscan Reader (Asys, Austria) according to the manufacturer's

instructions. Quantification of IL-6 and IL-8 protein expression was performed using the Microwin software Version 2.15 comparing the pg/mL concentrations of the TNF- α stimulated cells with the concentration of the ACN treated cells (n=3).

Statistical analysis. We have investigated each effect in three independent experiments and each experiment conducted at least with two duplicates. For each assay, stimulated TNF- α cells (low-grade and high-grade) served as a positive control (PC), and measured values (given in each experiment) were set to 100%. Results are presented as mean values \pm SEM or mean values \pm SD as indicated (n=3). Data were statistically evaluated using GraphPad Prism software version 6.0 (La Jolla, CA, USA); differences between and within experimental groups were analyzed using two-tailed unpaired Student's *t*-test and ANOVA, respectively. Differences were accepted as statistically significant at a p-value < 0.001 , < 0.01 or < 0.05 .

RESULTS

ACNs degradation and incubation studies with culturing Caco-2 cells (100%) on transwell inserts. The ACN-rich extract as well as M3G were tested for degradation without (at pH 2.0 and pH 7.4) and with cells (pH 7.4) in order to distinguish between the cell-mediated degradation rates, i.e. cellular uptake and the chemically induced degradation rates. As shown in **Figure 2**, all ACNs from the extract were stable at pH 2.0, whereas at pH 7.4 (without cells) ACNs from the extract were differently degraded (Figure 2 B-F). After 240 min incubation, the loss was $5.4 \pm 0.0\%$ for C3G, $11.8 \pm 0.1\%$ for Peo3G, $22.9 \pm 3\%$ for M3G ($p < 0.05$), $40.8 \pm 3.5\%$ for D3G ($p < 0.05$) and $46.2 \pm 5.5\%$ for Pet3G ($p < 0.05$) compared to their initial concentrations. The loss of M3G, as a single compound (Figure 2 A) was $37.4 \pm 6.1\%$ ($p < 0.05$) after incubation for 240 min. In all cases, degradation rates in the presence of cells were significantly higher than the

degradation rates without cells at pH 7.4. After 240 min incubation with cells, the loss was 96.5 ± 5.8 % for M3G (*# $p < 0.05$), 85.8 ± 7.1 % for Peo3G (*# $p < 0.05$), 84.3 ± 6.2 % for Pet3G (*# $p < 0.01$), 78.5 ± 11.1 % for D3G (*# $p < 0.05$) and 77.4 ± 7.4 % for C3G (*# $p < 0.01$) compared to their initial concentrations. The loss of M3G as a single compound (Figure 2 A) was 59.1 ± 3.8 % (*# $p < 0.05$).

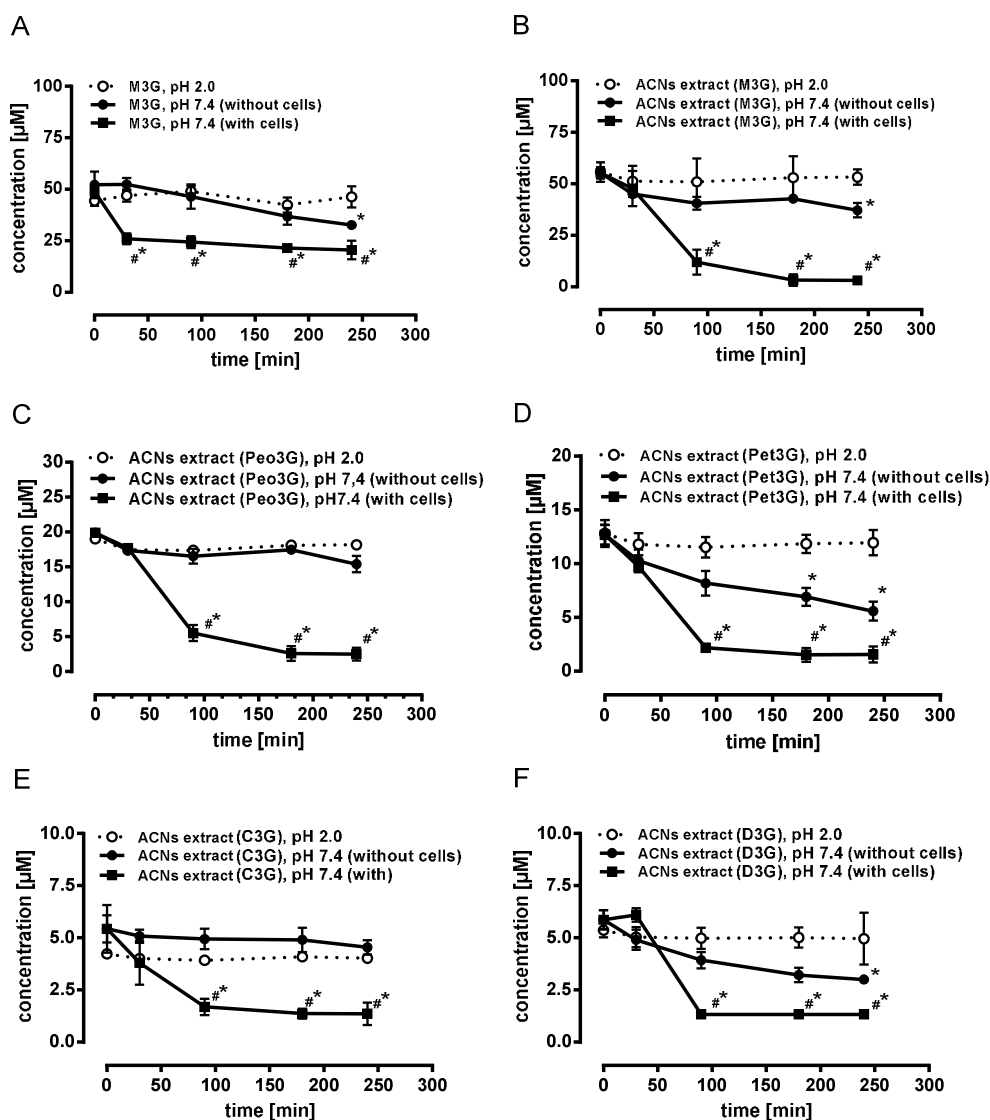


Figure 2. Degradation rates of ACNs from grape (*Dakapo*) extract and M3G on as a function of incubation time and pH in the presence of Caco-2 cells. 50 µmol/L M3G (A) and

50 $\mu\text{mol/L}$ M3G equivalents of ACN extract (B-F) were given to the apical compartment of transwell inserts (with or without cells). After 30, 60, 90, 120 and 240 min incubation time at pH 2.0 or 7.4, ACNs were quantified by HPLC-UV. Differences were significant at $*p < 0.05$ compared to the initial concentration or $\#*p < 0.05$ compared to the degradation rates without cells. Values are given as mean \pm SEM ($n=3$).

ACN incubation studies with cultured Caco-2 cells (100%) and Caco-2 cells mixed with HT29-B6 cells (90:10 and 80:20) on transwell inserts. In order to investigate the cell-mediated uptake efficiencies of ACNs from *Dakapo* extract and of M3G, both were given to the apical compartment of the transwell system, and basolateral enrichment was quantified with UPLC-MS after SPE. Furthermore, ACNs (extract and single compounds) were given to different intestinal cell mixtures in order to imitate different metabolization sites of the intestine, which could be responsible for the uptake of ACNs and degradation products such as phenolic acids. As shown in **Figure 3**, the apical loss of ACNs was associated with their enrichment in the basolateral compartment. The most occurring ACN M3G in the ACN-rich extract, which rapidly decreased in the apical compartment, was also the most prevalent compound in the basolateral solution indicating that M3G was transported across the intestinal epithelium (100% Caco-2) (Figure 3 A and B). After 240 min incubation time, M3G concentration was 157 ± 41 nmol/L in the basolateral compartment representing 0.35% of the initial apical concentration. In addition, Peo3G (89 ± 22 nmol/L), Pet3G (0.6 ± 0.2 nmol/L) and C3G (5.3 ± 1.2 nmol/L) but no D3G of the extract were accumulated. Using transwell inserts with mixed intestinal cells (Caco-2:HT29-B6 90:10 and 80:20) the degradation rates of ACNs were lower than those in the Caco-2 (100%) model (Figure 3 C-F). However, at the basolateral side M3G, Peo3G, Pet3G and C3G could be determined using the Caco-2:HT29-B6 (90:10) as well in the Caco-2:HT29-B6 (80:20) cultured

cells with concentrations of 36 ± 15 , 25 ± 12 , 15 ± 3.5 and 0.3 ± 0.2 nmol/L (90:10), and 33 ± 5 , 26 ± 14 , and 1 ± 0.3 nmol/L for M3G, Peo3G, and C3G (80:20), respectively. Similar to the results with the extract, M3G as a single compound was accumulated at the basolateral side in the mixed cell models, albeit in lower concentrations than in the Caco-2 model.

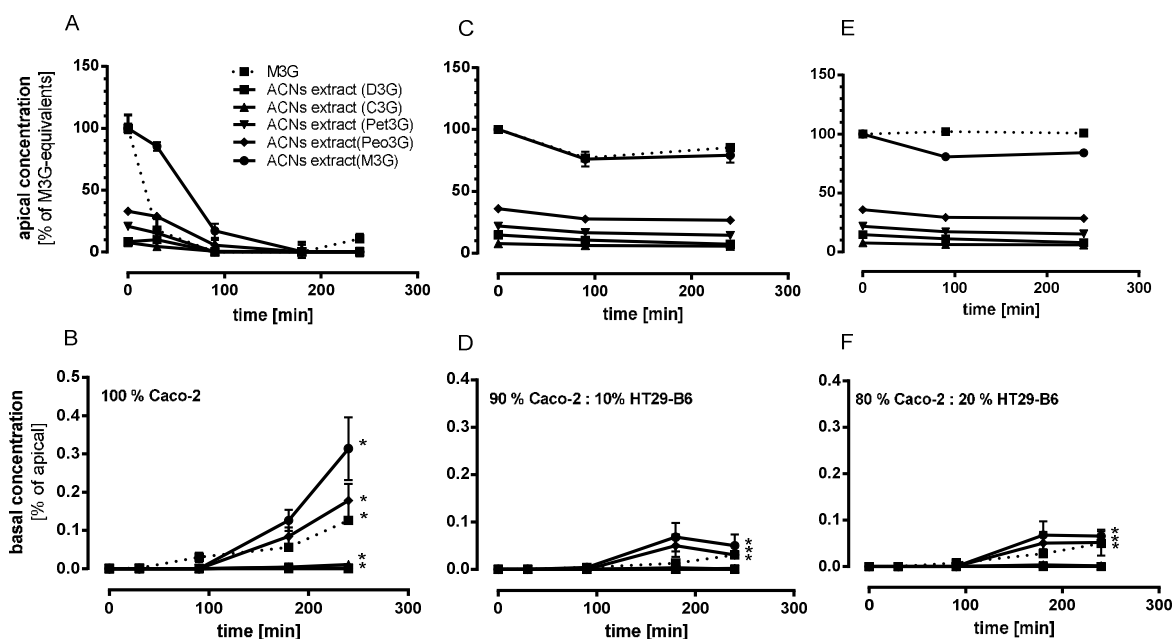


Figure 3 Concentrations of ACNs from *Dakapo* extract and M3G in apical and basolateral solutions using various cell mixtures and incubation times. Cell mixtures were incubated with $50 \mu\text{mol/L}$ M3G equivalents. Concentrations were determined in the apical and basolateral compartment of the transwell system at various time points. Upper panel: Apical concentrations (% of M3G equivalents) of ACNs using Caco-2 cells alone (A) and with 10% (C) or 20% HT29-B6 cells (E). Lower Panel: Basolateral concentrations (% of apical) of ACNs using Caco-2 cells alone (B) and with 10% (D) or 20% HT29-B6 cells (F). Values are given as mean \pm SEM ($n=3$). Differences were significant at $*p < 0.05$ compared to the initial concentrations.

Establishment of low-grade and high-grade inflammatory conditions in HUVECs stimulated with TNF- α In order to distinguish between low-grade inflammation to mimic an *in vivo* LGI and a chronic (high-grade) inflammation, HUVECs were stimulated with different concentrations of TNF- α for 3 hours. Thereafter, inflammation-related parameters were measured as described in “materials and methods”. The determination of leukocyte adhesion to HUVECs with the adhesion assay showed that adhesion was significantly increased by low-grade (1 ng/mL, $p<0.001$) and high-grade (10 ng/mL, $p<0.001$) inflammatory conditions in comparison to control cells without TNF- α stimulation (**Table 3**). Similar to leukocyte adhesion, low-grade inflammation significantly increased the expression of E-Selectin ($p<0.01$), VCAM-1($p<0.001$) and ICAM-1 ($p<0.001$) in endothelial cells concomitant with enhanced protein levels measured by FACS analysis (E-Selectin and ICAM-1 ($p<0.001$) and VCAM-1 ($p<0.01$)). This was also observed at high-grade inflammatory conditions. Leukocyte adhesion, mRNA- and protein expression of the adhesion molecules were significantly higher in stimulated cells using 10 ng/mL-TNF- α compared to non-stimulated cells ($p<0.001$). Gene expression of IL-6 and IL-8 in HUVECs was determined by quantitative RT-PCR using β -actin as internal standard and was expressed as 2^{-ddC_T} values after normalization of the target gene with the housekeeper gene β -actin. TNF- α stimulation of HUVECs induced a significant up-regulation of IL-6 ($p<0.01$), IL-8 mRNA ($p<0.001$) and protein levels compared to non-stimulated cells (NC). The inflammation induced effects of TNF- α correlated with the mRNA expression of NF- κ B. The amount of NF- κ B was significantly induced after exposure to 1 ng/mL TNF- α ($p<0.01$) or 10 ng/mL TNF- α ($p<0.01$).

Table 3 Changes of inflammation-related parameters under low-grade and high-grade inflammatory conditions. After incubation the HUVECs with 1 ng/mL TNF- α (low-grade inflammation) or 10 ng/mL TNF- α (high-grade inflammation) for 3 hours, parameters are measured as described in “materials and methods”. mRNA levels are given as relation of housekeeper gene/target gene ($2^{-\text{ddCT}}$), protein levels of adhesion molecules are given as mean fluorescence intensity (MFI) per 1000 cells and protein levels of cytokines in the supernatant are given as ng/mL.

| | Negative control | Low-grade [1 ng/mL TNF-a] | High-grade [10 ng/mL TNF-a] |
|---------------------------|-------------------|------------------------------|--------------------------------|
| leukocyte adhesion | 5802 \pm 256 | 49796 \pm 647*** | 106854 \pm 9491*** |
| adhesion molecules | | | |
| E-selectin mRNA | 0.190 \pm 0.035 | 0.527 \pm 0.023 ** | 4.610 \pm 0.572 *** |
| E-Selectin protein | 17.33 \pm 2.50 | 105.67 \pm 10.17 *** | 236.66 \pm 20.13 *** |
| VCAM-1 mRNA | 0.273 \pm 0.140 | 1.313 \pm 0.183 *** | 3.603 \pm 0.476 *** |
| VCAM-1 protein | 9.33 \pm 1.52 | 25.33 \pm 2.08 ** | 87.33 \pm 8.08 *** |
| ICAM-1 mRNA | 0.163 \pm 0.015 | 1.037 \pm 0.074 *** | 5.837 \pm 0.492 *** |
| ICAM-1 protein | 10.66 \pm 5.13 | 121.66 \pm 19.55 *** | 348.00 \pm 38.98 *** |
| cytokines | | | |
| IL-8 mRNA | 0.553 \pm 0.059 | 1.673 \pm 0.322 *** | 6.623 \pm 0.366 *** |
| IL-8 protein | 3.51 \pm 0.51 | 6.61 \pm 1.261 *** | 15.88 \pm 2.01 *** |
| IL-6 mRNA | 0.34 \pm 0.06 | 0.91 \pm 0.11 ** | 1.7 \pm 0.26 *** |
| IL-6 protein | 0.64 \pm 0.18 | 1.27 \pm 0.23 *** | 2.66 \pm 0.45 *** |
| regulator protein | | | |
| NF-kB mRNA | 0.823 \pm 0.065 | 2.17 \pm 0.246 ** | 2.19 \pm 0.28 ** |

*, **, *** indicate $p < 0.01$, $p < 0.01$ and $p < 0.001$, respectively, compared to non-stimulated cells (values are given as mean \pm SD ($n=3$)).

To compare the anti-inflammatory effects of ACNs with controls, values of the positive controls (TNF- α stimulated cells, low-grade and high-grade) were set to 100% and inhibition by ACNs, M3G or PCA was compared to the positive control ($n=3$).

Inhibition of leukocyte adhesion to HUVECs by ACNs and possible degradation products under different inflammatory conditions. To determine whether ACNs exert anti-inflammatory effects on human vascular cells, we first examined the effects of leukocyte adhesion on TNF- α -activated HUVECs. After incubation of ACNs from extract, M3G as a single compound and PCA as a possible degradation product of C3G with intestinal cells cultured on transwell inserts (Caco-2 (100%) or Caco-2/HT29-B6 cell mixtures (90:10 and 80:20) for 240 min, basolateral solutions were used immediately or remained on the co-cultured HUVECs for further 20 hours. Thereafter, HUVECs were stimulated with 1 ng/mL or 10 ng/mL TNF- α (3h). Maximal leukocyte adhesion to HUVECs with different TNF- α concentrations was set to 100% (PC, positive control) and possible ACN effects were related to the positive control. **Figure 4** shows that leukocyte adhesion to HUVECs was significantly reduced by ACNs from the extract (56%, $p<0.01$) and M3G (70%, $p<0.05$) when Caco-2 (100%) cells were pre-incubated for 24 hours prior to low-grade TNF- α stimulation of HUVECs. No difference in leukocyte adhesion was observed after short-term pre-incubation (4 hours) or under high-grade inflammatory conditions (Figure 4A).

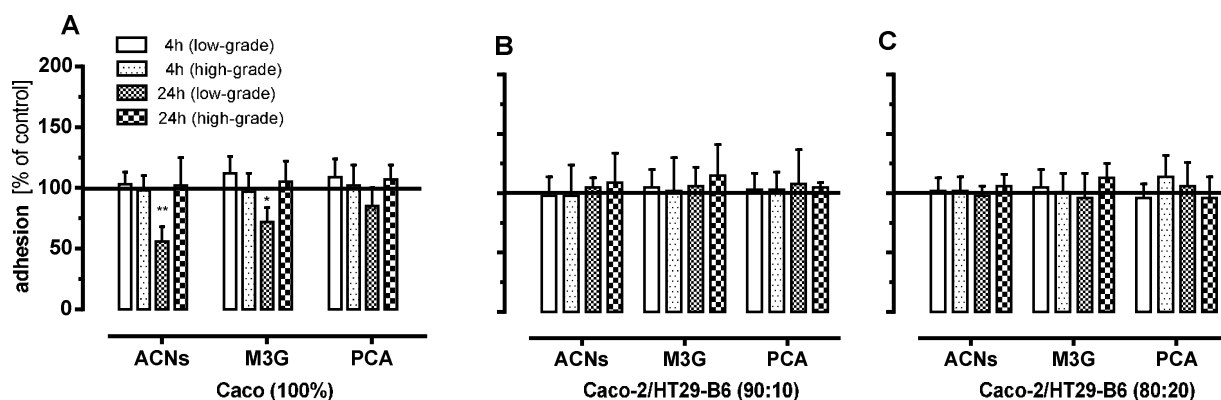


Figure 4. Effect of ACNs, M3G and PCA on leukocyte adhesion to HUVECs under different inflammatory conditions in various cell mixtures. After incubation of different cell mixtures

(Caco-2 without (A) or with co-cultured HT29-B6 cells (10% or 20%, (B and C)) with ACNs, M3G and PCA for 4 hours, transwell inserts were removed and the co-cultured HUVECs were used immediately (4h) or were further incubated in the basolateral compartment (20h). Thereafter, cells were stimulated for 3 hours using 1 ng/mL TNF- α (low-grade inflammation) or 10 ng/mL TNF- α (high-grade inflammation). After TNF- α stimulation, leukocyte adhesion was measured as described in the Material and Methods section. Corresponding controls (maximal adhesion to HUVECs after low-grade or high-grade TNF- α stimulation) were set to 100%. Values are given as mean \pm SD ($n=3$). Differences were significant at $*p < 0.05$ and $**p < 0.01$.

Using the basolateral media from the intestinal cell mixtures (Caco-2/HT29-B6 mixed cells (90:10 and 80:20)), neither an effect on inflammation (low-grade and high-grade) nor an effect of pre-incubation (4h and 24h) was observed (Figure 4 B and C).

Inhibition of adhesion molecules expression on HUVECs under low-grade inflammatory conditions. Since our results from the adhesion assays were significant for inhibiting low-grade inflammation and were only observed using 100% Caco-2 cells, these conditions were chosen for subsequent experiments. For the quantification of cell adhesion molecules on mRNA and protein levels, we either used the media from the basolateral compartments from the co-culture system or directly incubated HUVECs with ACNs from extract, M3G and PCA. Direct incubation was performed with ACNs (0.1 or 1 $\mu\text{mol/L}$ M3G equivalents) or M3G and PCA (0.1 or 1 $\mu\text{mol/L}$). **Figure 5** shows that 24-hour pre-incubation of HUVECs with the basolateral solutions from the transport studies with ACNs, M3G and PCA resulted in a decrease of all three adhesion molecules in comparison to TNF- α stimulated cells (Figure 5 A and B). ACNs significantly

inhibited the TNF- α induced adhesion molecule mRNA and protein expression with a greater effect on ICAM-1 and VCAM-1 than on E-selectin. ACNs of basolateral concentrations could significantly inhibit protein levels of adhesion molecules to 66 ± 5 , 52 ± 7 and 59 ± 9 % of TNF- α stimulated controls and 76 ± 29 , 40 ± 10 56 ± 14 % of the TNF- α stimulated mRNA levels of E-selectin, ICAM-1 and VCAM-1, respectively. Similar to ACNs, M3G significantly reduced the expression of the three adhesion molecules to 86 ± 6 , 72 ± 6 and 71 ± 12 % of the protein level for E-selectin, ICAM-1 and VCAM-1 as well as to 50 ± 10 , 66 ± 12 and 60 ± 10 % of the TNF- α -induced mRNA levels for E-selectin, ICAM-1 and VCAM-1. PCA could also significantly alter TNF- α -induced protein and mRNA expression levels, with 83 ± 9 , 61 ± 7 and 61 ± 4 % of the protein levels and 79 ± 10 , 80 ± 10 and 64 ± 13 % of the mRNA levels for E-selectin, ICAM-1 and VCAM-1.

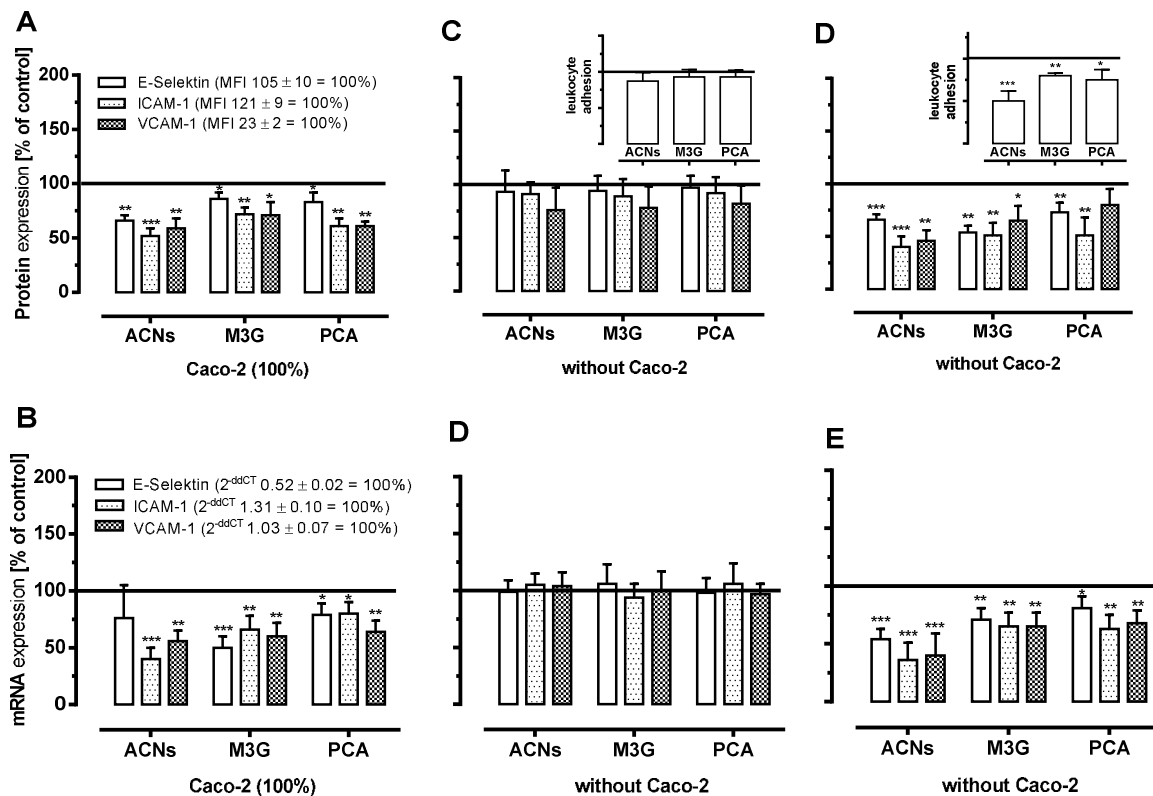


Figure 5 Effect of ACNs, M3G and PCA on the expression of cell adhesion molecules in HUVECs under long-term and low-grade inflammatory conditions. After incubation of Caco-2 with ACNs, M3G and PCA for 4 hours, transwell inserts were removed and the co-cultured HUVECs were further incubated with the basolateral compartment (20h) or were incubated directly with 0.1 or 1 $\mu\text{mol/L}$ M3G equivalents, respectively PCA. Thereafter, cells were stimulated for 3 hours using 1 ng/mL TNF- α (low-grade inflammation). After TNF- α stimulation, expression of adhesion molecules (E-selectin, ICAM-1 and VCAM-1) were measured on protein (upper level) and mRNA levels (lower level) as described in material and methods. Inserts (C and D): leukocyte adhesion to HUVECs after direct incubation with ACNs, M3G and PCA under long-term (20h) and low-grade TNF- α stimulation. Corresponding controls were set to 100%. Values are given as mean \pm SD ($n=3$). Differences were significant at $*p < 0.05$, $**p < 0.01$ and $***p < 0.001$.

Using ACNs, M3G and PCA in approximately equimolar concentrations to incubate the HUVECs directly, no effect on leukocyte adhesion (inserts) and expression of adhesion molecules was observed (Figure 5 C and D). Only concentrations of 1 $\mu\text{mol/L}$ ACNs, M3G and PCA were able to induce a significant inhibition of protein and mRNA expression of cell adhesion molecules (Figure 5 E and F).

Inhibition of cytokine expression in HUVECs under low-grade inflammatory conditions by ACNs/ACN metabolites. We used ELISAs and real-time PCR to measure the concentrations of selected chemokines (IL-6 and IL-8) and NF- κ B as regulator protein of inflammatory-related proteins to further validate some of the anti-inflammatory effects. **Figure 6** shows that 24-hour pre-incubation of HUVECs with the basolateral solutions from the transport studies using ACNs, M3G and PCA resulted in a decrease of IL-8 secretion and mRNA expression in TNF- α

stimulated cells (Figure 6 A and B). ACNs significantly inhibited TNF- α induced IL-8 mRNA and protein levels. ACNs of basolateral concentrations significantly reduced protein levels of IL-8 to $65 \pm 12\%$ and mRNA levels of IL-8 to $23 \pm 11\%$ in TNF- α stimulated HUVECs. Similar to ACNs, M3G and PCA significantly decreased the expression of IL-8 to 75 ± 10 and $55 \pm 14\%$ of TNF- α -induced IL-8 protein levels as well as to 41 ± 16 and $56 \pm 21\%$ of the TNF- α -induced IL-8 mRNA levels. Using ACNs, M3G and PCA in approximately equimolar concentration to incubate the HUVECs directly, no effect on IL-8 protein and mRNA expression was observed (Figure 6 C and D). Again, only concentrations of $1 \mu\text{mol/L}$ ACNs, M3G and PCA were able to induce a significant inhibition of IL-8 protein and mRNA expression [ACNs (51 ± 13 and $25 \pm 17\%$ TNF- α -induced IL-8 expression), M3G (69 ± 15 and $52 \pm 11\%$ TNF- α -induced IL-8 expression) and PCA (40 ± 9 and $63 \pm 18\%$ TNF- α -induced IL-8 expression)] (Figure 6 E and F). No effect was observed on IL-6 mRNA and protein expression.

The adhesion and anti-inflammatory effects of ACNs, M3G and PCA correlated with the effects on NF- κ B mRNA levels. The amount of NF- κ B mRNA was significantly reduced by ACNs from the basolateral compartment of the transwell systems. They reduced TNF- α stimulated mRNA levels to $69 \pm 10\%$. Similar to ACNs, M3G and PCA significantly decreased the expression of NF- κ B mRNA levels to $84 \pm 10\%$ and $81 \pm 9\%$ of TNF- α stimulated mRNA levels. This effect was greater, when HUVECs were directly incubated. ACNs, M3G and PCA reduced the mRNA levels to $56 \pm 15\%$ and $72 \pm 16\%$ and $73 \pm 6\%$ of the TNF- α induced expression when using $1 \mu\text{mol/L}$ equivalents, but no effect was observed when $0.1 \mu\text{mol/L}$ was used for pre-incubation.

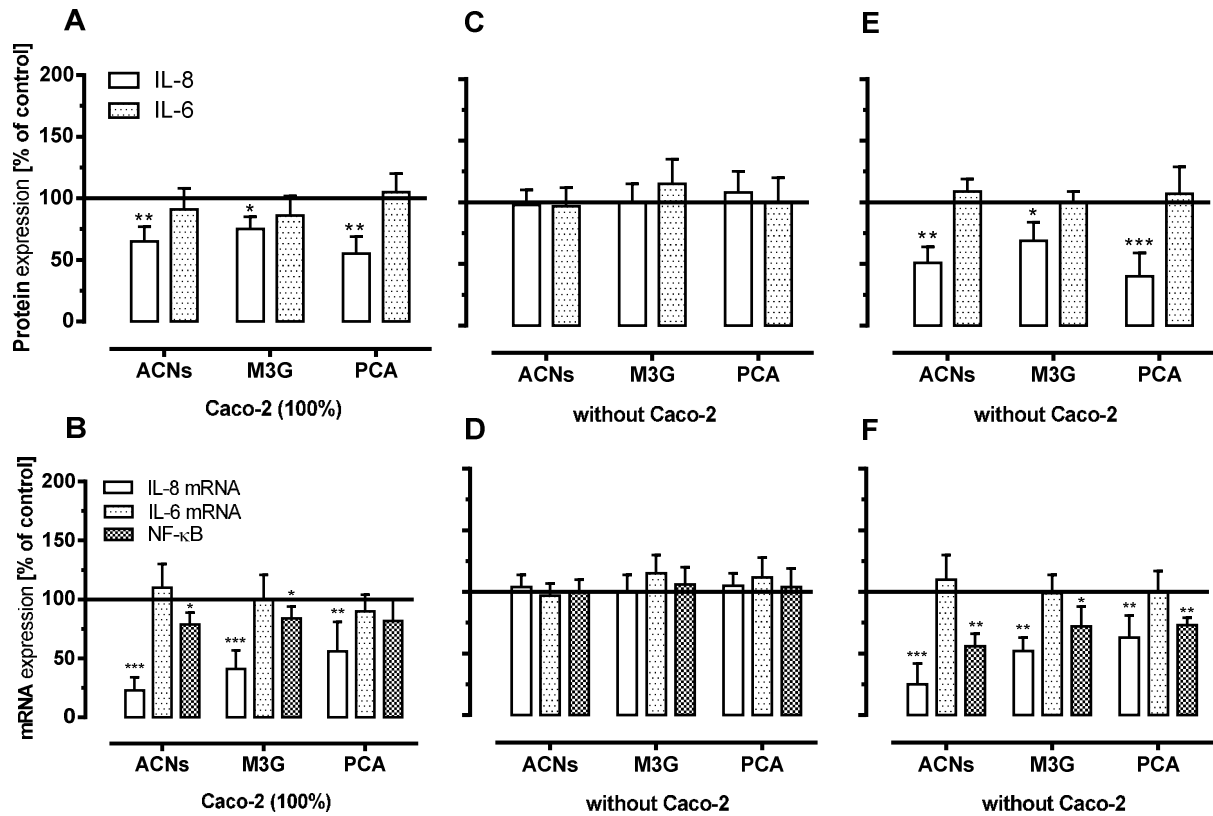


Figure 6 Effect of ACNs, M3G and PCA on expression of inflammation-related molecules in HUVECs under long-term and low-grade inflammatory conditions. After incubation of ACNs, M3G and PCA for 4 hours with Caco-2, transwell inserts were removed and the co-cultured HUVECs were further incubated with the basolateral compartment (20h) or were incubated directly with 0.1 or 1 $\mu\text{mol/L}$ M3G or PCA equivalents, . Thereafter, cells were stimulated for 3 hours using 1 ng/mL TNF- α (low-grade inflammation). After TNF- α stimulation, cytokine (IL-8 and IL-6) protein (upper panel) and mRNA levels (lower panel) as well as NF- κB mRNA gene expression was measured as described in the Material and Methods section. Corresponding controls were set to 100%. Values are given as mean \pm SD ($n=3$). Differences were significant at * $p < 0.05$, ** $p < 0.01$ and *** $p < 0.001$.

DISCUSSION

The link between atherogenesis and health promoting effects of ACNs has not yet been completely clarified; open question concern a) the identification and quantification of metabolites found in plasma *in vivo* after an ACN-rich diet, b) the role of intestinal metabolization and microbial fermentation in the gut and c) the molecular mechanisms in target cells. Therefore, our aim was to establish an *in vitro* co-culturing system with epithelial endothelial cells representing the intestinal epithelial layer and the adjacent endothelium to investigate effects of dietary ACNs. We have shown for the first time that ACNs from a grape extract as well as M3G as single ACN and PCA as a phenolic acid (degradation product of C3G) significantly inhibited leukocyte adhesion when being transported across the intestinal layer. This effect was only observed, when a) Caco-2 cells as single cell type served as an absorptive cell model, b) ACNs, M3G and PCA had been pre-incubated for 24 hours and c) low-grade inflammatory conditions were simulated. In addition, inhibition of leukocyte adhesion was associated with significant down-regulation of adhesion molecules as well as inhibition of chemokine secretion and expression in endothelial cells.

It has been shown recently that the bioavailability of ACNs was extremely low compared to other flavonoids. Available data from bioavailability studies suggested plasma concentrations to range between 1 and 550 nmoL/L for parenteral ACNs and their conjugates, and phenolic metabolites concentration between 10-2000 nmol/L post-consumption.^{34,35,36} These physiological concentrations were able to induce systemic effects.^{37,38} However, it is well-known, that ACNs are relatively instable and undergo chemical degradations at physiological pH (pH 7.2), a pH value existing in the intestine and colon.^{39,40} Furthermore, ACNs which reach the intestine, could be absorbed without modification or after enzymatic hydrolyzation of the attached sugar.⁴¹ Once absorbed, they could be further metabolized by phase-II-enzymes.⁴² This metabolization step was

suggested to be dependent on the distribution pattern with enzyme-dependent differences along the intestine.⁴³ Thus, we investigated ACN transport using Caco-2 cells alone (100%) or Caco-2 cells mixed with HT29-B6 (10 and 20%). Our results showed that the decrease in apical ACN concentrations was not a result of chemically induced degradation because of the greater reduction in ACN concentrations in the presence of cells (100% Caco-2) in transport studies compared to experiments without cells. This implicated that ACNs were taken up, an observation which was confirmed by the basal occurrence of major ACNs present in the extract, i.e., M3G, Peo3G, C3G and Pet3G. Using mixtures of intestinal cells (Caco-2/HT29-B6 cells: ratio 90/10 or 80/20) in the transport model we also observed a basal occurrence of M3G and Peo3G, albeit to a lesser extent, but no minor ACNs like Pet3G and D3G were detected after 240 min of incubation. Despite the occurrence of ACNs in the basolateral compartment, the rates do not correlate with their apical decline in concentration. For example, less than 0.3% of the initial M3G concentration could be found in the basolateral solution. These differences in the apical disappearance respectively basolateral occurrence of intact glucosides could be a consequence of β -glucosidase activities or lower transport capacities. Enzymes such as the brush border associated LPH (lactase phlorizin hydrolase) act on β -glucosidic cleavage to release the aglycone as shown for flavonols like quercetin.⁴⁴ Both, the aglycone of quercetin as well as quercetin-3-glucoside were able to inhibit GLUT2 mediated glucose transport.⁴⁵ Similar results were obtained with the ACNs pelargonidin-3-glucoside or M3G, which inhibit glucose transport primarily by inhibition of GLUT2 with less inhibition of SGLT1.^{41,46} This, however, must remain speculative, since we have not measured enzyme activities or inhibition of glucose transport. Nevertheless, in all three intestinal models we did not only measure the occurrence of ACNs from grape extract in basal compartments, but also that of M3G when applied as a single compound. In both cases, the transport efficiencies were low and recovery rates were less than

1%; this was similar to other recently published results. Toydemir *et al.* observed cyanidin-3-(2^G-glucosylrutinoside) transport from morello cherries across Caco-2 cells with transport efficiencies of 3–4%.⁴⁶ Similar transport efficiencies (1%) were reported by Faria *et al.* who tested the uptake of ACNs from grape skin extracts as well as of M3G as single compound.²⁵ Notably, Steinert *et al.* could not observe any transport of ACNs when supplied to Caco-2 cells.⁴⁷ Apart from intact glycosides in the basolateral compartment, we did not find any further metabolite, neither degradation nor phase-II products. This was similar to data from Zhou *et al.* who demonstrated that conjugated metabolites were predominant in rat *in situ* intestinal perfusion and rat *in vivo* pharmacokinetic studies but not when using Caco-2 monolayers.⁴⁸ Such differences could be explained by the different expression patterns of e.g. UDP-glucuronosyltransferase (UGT) in the intestine and intestinal cell lines as well as by differences between species.^{49,50}

However, although we detected ACN glycosides in the basolateral compartment in all three intestinal models, anti-atherogenic effects could only be observed using the basolateral compartments from the studies with 100% Caco-2 cells on the transwell filters under LGI conditions and long-term pre-incubation (24 hours). The inhibition of pro-inflammatory cytokines such as TNF- α and the reduction of leukocyte adhesion to endothelial cells are key mechanisms in the control of atherogenesis, especially in situations of LGI. Our results indicate that ACNs in an intestinal-endothelial cell co-culture model lead to a significant reduction of the TNF- α induced leukocyte adhesion under LGI conditions. This could also be observed for M3G or PCA, albeit to a lesser extent. Interestingly, direct incubation of endothelial cells with ACNs from extract or M3G and PCA in equivalent concentrations found in the basal compartment failed to induce this anti-adhesive effect; only higher concentrations were able to do so. Thus, we speculated that unknown intermediate metabolites were generated when ACNs, M3G and PCA

cross the intestinal cell layer. Furthermore, these unknown metabolites were only effective in LGI and long-term incubation (24 hours pre-incubation).

The inhibitory effects on cell adhesion induced by ACNs from extract or as single compound were found to be associated with changes in the expression of adhesion molecules such as E-selectin, ICAM-1 and VCAM-1. In previous studies others have also shown that ACNs and their degradation products were able to influence ICAM-1 and VCAM-1 expression *in vitro* and *in vivo*.^{51,52,53,54} However, *in vitro* experiments were usually performed a) with direct incubation of endothelial cells with ACNs and b) by stimulation with high TNF- α concentrations to induce a pro-inflammatory situation. For example, Huang *et al* have demonstrated that pre-incubation of HUVECs with 1-100 μ M M3G attenuated TNF- α induced ICAM-1 and VCAM-1 expression and secretion.⁵⁵ Although they used a high concentration of TNF- α of 10 μ g/mL, they observed effects of M3G already at low concentrations (1 μ mol/L). The reason might have been that they reduced serum concentrations in HUVEC culture media prior to their pre-incubation experiments with M3G. Chao *et al* on the other hand showed that 100 μ g/mL purple sweet potato leaf extract (PSPLE) and its major ACN cyanidin attenuated TNF- α (2 ng/mL) induced VCAM-1 expression in human aortic endothelial cells (HAECs).⁵⁶ Hidalgo *et al* reported that the TNF- α induced ICAM-1 and VCAM-1 expression levels were dose-dependently reduced when using high concentrations of possible breakdown products of ACNs such as gallic acid (10-100 μ M).⁵⁷ This also applies to PCA for which Zhou *et al* have shown that high concentrations (150 μ M) inhibited TNF- α induced (10 ng/mL) up-regulation of lymphoma cell (U937) adhesion to HUVECs.⁵⁸ Furthermore, PCA inhibited TNF- α stimulated VCAM-1 and ICAM-1 expression through mechanisms involving the transcription factors NF- κ B and AP1. Keeping in mind that PCA or gallic acid concentrations in plasma were found to be low under physiological conditions, concentrations used *in vitro* were much higher.⁵⁹ In our study, the expression of NF- κ B mRNA in

TNF- α stimulated HUVECs was decreased with ACNs as well with M3G and PCA, but only under LGI conditions and long-term incubation. However, inhibition of the NF- κ B signaling pathway to reduce the expression of pro-inflammatory mediators is a well-known process and ACNs or their phenolic acids may influence these signaling pathways in multiple ways.⁶⁰ The reduced NF- κ B mRNA expression due to ACN, M3G and PCA exposure correlated with the reduced expression of cell adhesion molecules and cytokines. Under our conditions, leukocyte adhesion to HUVECs was concomitant with the up-regulation of IL-6 and IL-8 expression, chemoattractant cytokines acting as potent regulators of inflammation-induced atherogenesis. This was also observed in previous studies showing that ACNs and phenolic acid exerted anti-atherogenic effects by modulation of cytokine secretion.⁵⁷

In conclusion, we have shown for the first time that physiological concentrations of ACNs from an extract or applied as a single compound crossed the intestinal cell layer and ameliorated the inflammatory response in endothelial cells by down-regulating the expression of pro-inflammatory cytokines, particularly IL-8, reducing the levels of adhesion molecules and subsequently leukocyte adhesion. Under the conditions tested (LGI and long-term incubation) these changes were significant, whereas no effect was observed with short-term exposure and high-grade inflammation. A limitation of the study was that the observed effects may not only be a result of parenteral anthocyanins, but rather an effect of unidentified metabolites. In further studies, a focus should be put on the identification and characterization of anthocyanins and their metabolites which would give information on which ACN metabolites were responsible for the effects. Although it is difficult to directly transfer these data to the *in vivo* situation, our results support the hypothesis that ACNs or their degradation protect against inflammation-induced atherogenesis.

Acknowledgments

This research was funded by the German Ministry of Education and Research (BMBF) as part of the research consortium ANTHONIA (grant # 0315379A); the funders had no role in the study design, the data collection and analysis, the decision to publish, or the preparation of the manuscript. SK, CK and SR were the principal investigators of the study responsible for the study design and the writing of the manuscript. HA performed the intestinal Caco-2/HT29-B6 study, BF prepared the ACN-rich extract and determined its ACN content, SD and AR were responsible for measuring ACNs and their metabolites (Financial support by the Deutsche Forschungsgemeinschaft (DFG Sp314/12-1) is gratefully acknowledged). The authors would like to thank Bianca Walber and Nicole Tscherney for their excellent technical assistance. All authors approved the final version of the manuscript before submission and declared no conflict of interest.

REFERENCES

1. O. Oyebode, V. Gordon-Dseagu, A. Walker and J.S. Mindell, *J Epidemiol Community Health.*, 2014, 68, 856-862.
2. K.T. Teng, C.Y. Chang, L.F. Chang and K. Nesaretnam, *Nutr J.*, 2014, **13**, 1-34.
3. C.A. Cunha, F.S. Lira, J.C. Rosa Neto, G.D. Pimentel, G.I. Souza, C.M. da Silva, C.T. de Souza, E.B. Ribeiro, A.C. Sawaya, C.M. Oller do Nascimento, B. Rodrigues, P. de Oliveira Carvalho and L.M. Oyama, *Mediators Inflamm.*, 2013, **635470**,1-24.
4. O.R. Wright, G.A. Netzel and A.R. Sakzewski, *Can J Physiol Pharmacol.*, 2013, **91**, 480-488.

5. E. Dean and R.G. Hansen, *Arthritis.*, 2012, **560634**, 1-29.
6. D. Calçada, D. Vianello, E. Giampieri, C. Sala, G. Castellani, A. de Graaf, B. Kremer, B. van Ommen, E. Feskens, A. Santoro, C. Franceschi and J. Bouwman, *Mech Ageing Dev.*, 2014, **136-137**, 138-147.
7. S.M. Heringa, E. van den Berg, Y.D. Reijmer, G. Nijpels, C.D. Stehouwer, C.G. Schalkwijk, T. Teerlink, P.G. Scheffer, K. van den Hurk, L.J. Kappelle, J.M., Dekker and G.J. Biessels, *Psychoneuroendocrinology.*, 2014, **40**, 108-118.
8. B.C. van Bussel, S.S. Soedamah-Muthu, R.M. Henry, C.G. Schalkwijk, I. Ferreira, N. Chaturvedi, M. Toeller, J.H. Fuller and C.D. Stehouwer, *Nutr Metab Cardiovasc Dis.*, 2013, **23**, 758-764.
9. B. Petri, M. Phillipson and P. Kubes, *J Immunol.*, 2008, **180**, 6439-6446.
10. E. Jubeli, L. Moine, J. Vergnaud-Gauduchon and G. Barratt, *J Control Release.*, 2012, **158**, 194-206.
11. M.B. Lawrence and T.A. Springer, *Cell.*, 1991, **65**, 859-873.
12. M.I. Cybulsky, K. Iiyama, H. Li, S. Zhu, M. Chen, M. Iiyama, V. Davis, J. Gutierrez-Ramos, P.W. Connelly and D.S. Milstone, *J. Clin. Invest.*, 2001, **107**, 1255–1262.
13. D.H. Kusters, J. Tegtmeier, L.J. Schurgers and C.P. Reutelingsperger, *Mol Imaging Biol.*, 2012, **14**, 523-533.
14. S. Kaptoge, S.R. Seshasai, P. Gao, D.F. Freitag, A.S. Butterworth, A. Borglykke, E. Di Angelantonio, V. Gudnason, A. Rumley, G.D. Lowe, T. Jørgensen and J. Danesh, *Eur Heart J.*, 2014, **35**, 578-589.
15. A. Rodriguez-Mateos, C. Rendeiro, T. Bergillos-Meca, S. Tabatabaee, T.W. George, C. Heiss and J.P. Spencer, *Am J Clin Nutr.*, 2013, **98**, 1179-1191.

16. M. Kolehmainen, O. Mykkänen, P.V. Kirjavainen, T. Leppänen, E. Moilanen, M. Adriaens, D.E. Laaksonen, M. Hallikainen, R. Puupponen-Pimiä, L. Pulkkinen, H. Mykkänen, H. Gylling, K. Poutanen and R. Törrönen, *Mol Nutr Food Res.*, 2012, **56**, 1501-1510.
17. M. Monagas, N. Khan, C. Andres-Lacueva, R. Casas, M. Urpí-Sardà, R. Llorach, R.M. Lamuela-Raventós and R. Estruch, *Am J Clin Nutr.*, 2009, **90**, 1144-1150.
18. S. Kumar and A.K. Pandey, *Scientific World Journal.*, 2013, **162750**, 1-52.
19. A. Chanet, D. Milenkovic, S. Claude, J.A. Maier, M. Kamran Khan, N. Rakotomanomana, S. Shinkaruk, A.M. Bérard, C. Bennetau-Pelissero, A. Mazur and C. Morand, *Br J Nutr.*, 2013, **110**, 587-598.
20. S. Tribolo, F. Lodi, C. Connor, S. Suri, V.G. Wilson, M.A. Taylor, P.W. Needs, P.A. Kroon and D.A. Hughes, *Atherosclerosis.*, 2008, **197**, 50-56.
21. C. Felgines, S. Talavera, O. Texier, A. Gil-Izquierdo, J.L. Lamaison and C. Remesy, *J Agric Food Chem.*, 2005, **53**, 7721-7727.
22. G. Gross , D.M. Jacobs , S. Peters , S. Possemiers , J. van Duynhoven , E.E. Vaughan and T. van de Wiele, *J Agric Food Chem.*, 2010, **58**, 10236-10246.
23. A.M. Aura, P. Martin-Lopez, K.A. O'Leary, G. Williamson, K.M. Oksman-Caldentey, K. Poutanen and C. Santos-Buelga, *Eur J Nutr.*, 2005, **44**, 133-142.
24. A. Faria, D. Pestana, J. Azevedo, F. Martel, V. de Freitas, I. Azevedo, N. Mateus and C. Calhau, *Mol Nutr Food Res.*, 2009, **53**, 1430-1437
25. M. Amasheh, J. Luettig, S. Amasheh, M. Zeitz, M. Fromm and J.D. Schulzke, *Ann N Y Acad Sci.*, 2012, **1258**, 100-107.
26. M. Pinto, S. Robine-Leon and M.D. Appay, *Biol Cell.*, 1983, **47**, 323-330.
27. A. Blais, P. Aymard and B. Lacour, *Pflugers Arch.*, 1997, **434**, 300-305.

28. A. Le Bivic, A. Quaroni, B. Nichols and E. Rodriguez-Boulan, *J Cell Biol.*, 1990, **111**, 1351-1361.
29. M. Yoshioka, R.H. Erickson, H. Matsumoto and E. Gum, *Int J Cancer.*, 1991, **47**, 916-921.
30. K.M. Kreusel, M. Fromm, J.D. Schulzke and U. Hegel, *Am. J. Physiol.*, 1991, **261**, 574-582.
31. C. Augeron and C.L. Laboisse, *Cancer Res.*, 1984, **44**, 3961-3969.
32. G. Chiva-Blanch, M. Urpi-Sarda, M. Rotchés-Ribalta, R. Zamora-Ros, R. Llorach, R.M. Lamuela-Raventós, R. Estruch and C Andrés-Lacueva, *J Chromatogr A.*, 2011, **1218**, 698-705.
33. I. Reiss, S. Kuntz, R. Schmidt, C. Kunz, L. Gortner and S. Rudloff, *Immunobiology.*, 2004, **209**, 235-244.
34. M. Garcia-Alonso, A.M. Minihane, G. Rimbach, J.C. Rivas-Gonzalo and S. Pascual-Teresa, *J Nutr Biochem.*, 2009, **20**, 521–529.
35. C.D. Kay, G. Mazza and B.J. Holub, *J Nutr.*, 2005, **135**, 2582–2588.
36. T. Miyazawa, K. Nakagawa, M. Kudo, K. Muraishi and K. Someya, *J Agric Food Chem.*, 1999, **47**, 1083–1091.
37. R.M. de Ferrars, C. Czank, Q. Zhang, N.P. Botting, P.A. Kroon, A. Cassidy and C.D. Kay, *Br J Pharmacol.*, 2014, **171**, 3268-3282.
38. A. Jennings, A.A. Welch, S.J. Fairweather-Tait, C. Kay, A.M. Minihane, P. Chowienczyk, B. Jiang, M. Cecelja, T. Spector, A. Macgregor and A. Cassidy, *Am J Clin Nutr.*, 2012, **96**, 781-788.
39. Y. Cahyana and M.H. Gordon, *Food Chem.*, 2013, **141**, 2278-2285.
40. Y. Liu, D. Zhang, Y. Wu, D. Wang, Y. Wei, J. Wu and B. Ji, *Int J Food Sci Nutr.*, 2014, **65**, 440-448.
41. S. Manzano and G. Williamson, *Mol Nutr Food Res.*, 2010, **54**, 1773-1780.
42. U. Hribar and N.P. Ulrih, *Curr Drug Metab.*, 2014, **15**, 3-13.

43. G.M. Pacifici, M. Franchi, P.G. Gervasi, V. Longo, P. di Simplicio, A. Temellini and L. Giuliani, *Pharmacology.*, 1989, **38**, 137-145.
44. A.J. Day, F.J. Canada, J.C. Diaz, P.A. Kroon, R. Mclauchlan, C.B. Faulds, G.W. Plumb, M.R. Morgan and G. Williamson, *FEBS Lett.*, 2000, **468**, 166–170.
45. J. Song, O. Kwon, S. Chen, R. Daruwala, P. Eck, J.B. Park and M. Levine, *J. Biol. Chem.*, 2002, **277**, 15252–15260.
46. G. Toydemir, D. Boyacioglu, E. Capanoglu, I.M. van der Meer, M.M. Tomassen, R.D. Hall, J.J. Mes and J. Beekwilder, *J Agric Food Chem.*, 2013, **61**, 11434-11441.
47. R.E. Steinert, B. Ditscheid, M. Netzel and G. Jahreis, *J Agric Food Chem.*, 2008, **56**, 4995-5001.
48. Z. Zuo, L. Zhang, L. Zhou, Q. Chang and M. Chow, *Life Sci.*, 2006, **79**, 2455-2462.
49. B. Xu, S. Gao, B. Wu, T. Yin and M. Hu, *J Pharm Biomed Anal.*, 2014, **88**, 180-190.
50. T. Furukawa, Y. Naritomi, K. Tetsuka, F. Nakamori, H. Moriguchi, K. Yamano, S. Terashita, K. Tabata and T. Teramura, *Xenobiotica.*, 2014, **44**, 205-216.
51. Y. Zhu, W. Ling, H. Guo, F. Song, Q. Ye, T. Zou, D. Li, Y. Zhang, G. Li, Y. Xiao, F. Liu, Z. Li, Z. Shi and Y. Yang, *Nutr Metab Cardiovasc Dis.*, 2013, **23**, 843-849.
52. R. Kalin, A. Righi, A. Del Rosso, D. Bagchi, S. Generini, M.M. Cerinic and D.K. Das, *Free Radic Res.*, 2002, **36**, 819-825.
53. K. Miyazaki, K. Makino, E. Iwadate, Y. Deguchi and F. Ishikawa, *J Agric Food Chem.*, 2008, **56**, 11485-11492.
54. C. K. Sen and D. Bagchi, *Mol. Cell. Biochem.*, 2001, 216, 1– 7
55. Huang WY, Wang J, Liu YM, Zheng QS, Li CY, *Eur J Pharmacol.*, 2014, **723**, 67-72.

56. P.Y. Chao, Y.P. Huang and W.B. Hsieh, *Cell Adh Migr.*, 2013, **7**, 237-245.
57. M. Hidalgo, S. Martin-Santamaria, I. Recio, C. Sanchez-Moreno, B. de Pascual-Teresa, G. Rimbach and S. de Pascual-Teresa, *Genes Nutr.*, 2012, **7**, 295-306.
58. Z. Zhou , Y. Liu, A.D. Miao and S.Q. Wang, *Eur J Pharmacol.*, 2005, **513**, 1-8.
59. S. Shahrzad, K. Aoyagi, A. Winter, A. Koyama and I. Bitsch, *J Nutr.*, 2001, **131**, 1207-1210.
60. L. Yi, C.Y. Chen, X. Jin, T. Zhang, Y. Zhou, Q.Y. Zhang, J.D. Zhu and M.T. Mi, *Biochimie.*, 2012, **94**, 2035-2044.