

**Lignin solubilisation and gentle fractionation in liquid ammonia**

Journal:	<i>Green Chemistry</i>
Manuscript ID:	GC-ART-06-2014-001143.R1
Article Type:	Paper
Date Submitted by the Author:	29-Aug-2014
Complete List of Authors:	Strassberger, Zea; UvA, Prinsen, Pepijn; UvA, HIMS Klis, Frits; Wageningen University and Research Centre, Food and Biobased Research ES, Daan; Wageningen UR Food and Biobased Research, Sustainable Chemistry & Technology Tanase-Grecea, Stefania; Amsterdam University, Van't Hoff Institute for Molecular Sciences; Rothenberg, Gadi; University of Amsterdam, Van 't Hoff Institute for Molecular Sciences

Cite this: DOI: 10.1039/c0xx00000x

www.rsc.org/xxxxxx

ARTICLE TYPE

Lignin solubilisation and gentle fractionation in liquid ammonia

Zea Strassberger^a, Pepijn Prinsen^a, Frits van der Klis^b, Daan S. van Es^b, Stefania Tanase^a, and Gadi Rothenberg^{a*}

Received (in XXX, XXX) Xth XXXXXXXXXX 20XX, Accepted Xth XXXXXXXXXX 20XX

DOI: 10.1039/b000000x

We present a simple method for solubilising lignin using liquid ammonia. Unlike water, which requires harsh conditions, ammonia can solubilise technical lignins, in particular kraft lignin. A commercial pine wood Kraft lignin (Indulin AT) was solubilized instantaneously at room temperature and 7–11 bars autogeneous pressure, while a commercial mixed wheat straw/Sarkanda grass soda lignin (ProtobindTM 1000) was solubilized within 3 h at ambient temperature, and 30 min at 85 °C. Hydroxide salts were not required. Wheat straw, poplar and birch organosolv lignins, as well as elephant grass native lignin (MWL) were also solubilized, albeit at lower values. Different sequences of solubilisation and extraction were tested on the ProtobindTM 1000 lignin. The remaining lignin residues were characterized by FTIR, size exclusion chromatography (SEC), elemental analysis (ICP), 2D-NMR and ³¹P NMR. Liquid ammonia is not an innocent solvent, as some nitrogen was incorporated in the residual lignin which then rearranged to higher molecular weight fractions. Nevertheless, the mild solubilisation conditions make liquid ammonia an attractive candidate as a solvent for lignin in future biorefinery processes.

Introduction

Biomass is our only practical renewable resource of carbon.¹ Thanks to government legislation and societal pressure, its use as a source of chemicals and fuels is spreading.²⁻⁷ Terrestrial lignocellulose is the most abundant, and most easily harvested type of non-edible biomass. The three main components of lignocellulosic biomass are cellulose, hemicellulose, and lignin. Lignin is an amorphous and branched bio-polymer consisting of phenylpropane units, which represents up to 40% of the dry biomass weight.⁸ Since it is practically insoluble and highly complex, selective conversion of lignin into useful chemicals is one of the main challenges in biorefining.⁹ Today's biorefinery schemes often exclude lignin from their processes.¹⁰ For instance, the lignocellulose-to-ethanol process¹¹ uses the cellulose and hemicelluloses, but leaves lignin as a low-added-value fuel. Lignin can be converted into fuels, but it is also the most abundant natural source of aromatics, which may be used directly or converted by the chemical intermediates sectors. With this in mind, several research groups are directing considerable efforts into converting lignin into valuable chemicals.¹²⁻¹⁶

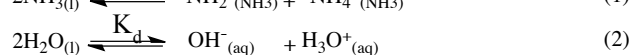
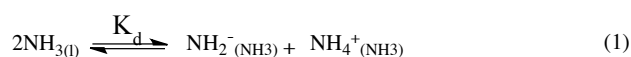
Much of today's lignin comes as a by-product of the pulp and paper industry. It can be recovered from the pulping liquor. The so-called 'black liquor' (produced by the Kraft pulping process) contains up to 35% of lignin, and is typically burned as a low-grade fuel in the recovery boiler.^{17, 18} Isolating lignin from this liquor is possible, and several elegant methods were developed, such as the LignoBoost process.¹⁹ Besides lignosulfonates (sulfite pulping process), commercial kraft lignins are already being produced in large amounts, while new methods for lignin isolation are being developed within the biorefinery concept. Like Kraft, the soda process is an alkaline pulping process but without the active sulphur species, leading to sulphur-free lignins.

Anthraquinone is used frequently to assist the soda pulping process. Organosolv pulping processes employ a mixture of organic acids and/or organic solvents and, like soda lignin, will probably provide the key lignin types for future biorefineries, as they are sulphur-free.²⁰ The bottleneck in upgrading lignin to chemicals is often the solubilisation step. State-of-the art processes for dissolution and depolymerisation use either harsh acid/base treatments or high-temperature pyrolysis/gasification.^{15, 21-23} Both methods give a plethora of products, and often an excess of salts that requires costly workup and separation. Thus, one of the main challenges in lignin valorisation is finding green, robust, and cost-effective means to dissolve lignin, which may enable its selective and efficient depolymerisation.

Here, we present a novel and gentle method for solubilizing kraft (pine wood), soda (mixed wheat straw/Sarkanda grass) and organosolv (poplar, birch and wheat straw) lignins using pure liquid ammonia. Additional experiments confirmed that a native grass lignin (MWL from elephant grass) was also soluble. This way, we can dissolve lignin in a continuous basic environment without adding any potassium/sodium hydroxide. Barring the work of Yan *et al*²⁴ in the 1950s, this is the first report on using anhydrous liquid ammonia directly as a solvent to solubilize lignin. We discuss the fundamental similarities and differences between ammonia and water, and show that using liquid ammonia might help to overcome the drawbacks of aqueous acid or base solutions. After dissolution, the ammonia can be removed quickly by evaporation at room temperature. Note that the practical tools are in principle available as biorefineries have used liquid ammonia indirectly for isolating cellulose and hemicellulose as part of the AFEX process.²⁵⁻²⁷ Moreover, the technical-economical viability of the AFEX process differs completely from aqueous based processes, as the ammonia can be

recycled almost quantitatively and the workup requires less solvent.

Water is the most abundant and eco-friendly solvent, and moving away from it to another protic polar liquid requires just cause. Ammonia and water have similar physical properties and therefore exhibit similar behaviour, but they also have some interesting differences (see ESI, Table S1 and S2). It is these differences make ammonia such an effective solvent for lignin.^{15, 28-30} To understand this, we first look at the fundamentals behind the solubilisation. Three main parameters affect the solubility of a molecular substance in liquid ammonia: the magnitude of dispersion forces, the polarity of the ammonia molecule, and its ability to form hydrogen bonds.²⁸ The auto-ionization equilibrium of ammonia defines both the acid and base species, just like in water (eqs. 1 and 2), but the equilibrium constants are vastly different. Unlike water, ammonia practically never dissociates. Its K_d is a million times lower than the reciprocal Avogadro number,³¹ so from a million moles of ammonia, which is roughly one ton of ammonia, only 10 mg would dissociate.³²



The dispersion forces define how two molecules will attract each other by their fluctuating dipole moment.^{33,34} Considering the dipole moments of ammonia and water,³⁴ the calculation of the orientation effect and the dispersion force shows that alkyl ethers, lipophilic alcohols and aromatics will interact more strongly with ammonia (ESI, Table S2). This, combined with the fact that ammonia is one of the most basic molecular liquids,³⁵ makes it a uniquely effective solvent for complex aromatic biopolymers such as lignin. Water contains two protons and two electron pairs which form a symmetrical continuous hydrogen bond forming pattern, while liquid ammonia contains three protons and one electron pair. This is one of the reasons for the difference in their boiling points. Although, like water, liquid ammonia is considered to be a good hydrogen donor and acceptor, it has actually very limited hydrogen donor capacity.³⁶ It is known that liquid ammonia dissolves both ionic compounds and organic molecules.³⁷ Ammonia is basic, and has a stronger ionisation capacity than water.^{36, 38} Thus, carboxylic acids, phenols and imides form ammonium ion pairs in liquid ammonia. Liquid ammonia has received attention as an alternative to aprotic polar industrial solvents, which have toxicity concerns and are difficult to recycle.³⁷

Experimental

Lignin solubilization and extraction experiments. The solubilization experiments were carried out with a pine wood kraft lignin (Indulin AT, Sigma Aldrich), a commercial mixed wheat straw/Sarkanda grass soda lignin (ProtobindTM 1000, GreenValue S.A., Granit, Switzerland), three organosolv lignins from poplar, spruce, and wheat straw (Energy Research Centre of the Netherlands, ECN), and a native grass lignin (MWL from elephant grass³⁹). No further data on the pulping process and

lignin isolation methods can be provided. The humidity of the lignins were (5.8 ± 0.3), (4.2 ± 0.5), (4.6 ± 0.6), (±) and (3.6 ± 0.6), respectively. In a typical reaction, 250 mg of lignin was mixed with 30 mL of liquid ammonia at ambient temperature, creating an autogeneous pressure of 7–11 bars (depending on the actual room temperature).

CAUTION! Working with liquid ammonia requires special attention to equipment safety. We ran all our reactions in a built-to-purpose stainless steel autoclave installed in suitable premises. A detailed description of the equipment and the safety procedures is included in the ESI.

Besides studying the solubility of different lignins in liquid ammonia, we also ran extraction experiments of the ProtobindTM 1000 lignin (P1000 soda lignin) with dichloromethane (DCM), and characterized the remaining lignin by IR, SEC, ICP and NMR. After the ammonia was released (and after cooling with ice when heated), and the autoclave was flushed with nitrogen, the solids were extracted with DCM (for detailed experimental procedures see the ESI). The relative percentages of monomers and dimers of the extractive fractions were calculated from GC and GC/MS analyses. ICP analysis was performed by Kolbe GmbH (Germany).

Size Exclusion Chromatography (SEC) measurements.

Lignin samples of 1 mg/ml dissolved in 0.5 M NaOH were injected into two serial connected columns (4.6×30 cm), each manually packed with a manually packed column with ethylene glycolmethacrylate copolymer TSK gel Toyopearl, HW-75F and HW-55F respectively, and eluted with the same solvent, with the following conditions: flow 1 ml/min, column temperature 25 °C, and detection at 280 nm. The standards used for calibration of the molar mass distribution consisted of sodium polystyrene sulfonates (M_w range: 891 Da to 976 kDa) and phenol.

NMR spectroscopy. Ca. 40 mg of sample was dissolved in 0.750 mL of DMSO- d_6 . Three samples of the P1000 soda lignin (a) were prepared by three different persons and measured at different time moments. The mean value and the corresponding standard deviation were calculated from the quantification. To explore the intrinsic variation, experiment d2 was repeated and the corresponding standard deviation on the NMR quantification was calculated. NMR spectra were recorded at 25 °C on a Bruker AVANCE III 400 MHz instrument equipped with a 5mm BBI probe with z-gradient (5G/cmA). Heteronuclear single quantum coherence (HSQC) experiments used Bruker's "hsqcetgpsi2" pulse program with spectral widths of 5000 Hz (from 10 to 0 ppm) and 20,843 Hz (from 165 to 0 ppm) for the ¹H- and ¹³C dimensions. The number of collected complex points was 1024 for the ¹H-dimension with a recycle delay of 1.5 s. The number of transients was 32, and 256 time increments were always recorded in the ¹³C dimension. The ¹J_{CH} used was 145 Hz. Processing used squared cosine-bell apodization in both dimensions. Prior to Fourier transformation, the data matrixes were zero-filled up to 1024 points in the ¹³C-dimension. The central solvent peak was used as an internal reference (δ_C 39.5; δ_H 2.49). HSQC correlation peaks were assigned by comparing with the literature.⁴⁰⁻⁴³ A semi-quantitative analysis⁴⁰ of the volume integrals (uncorrected) of the HSQC correlation peaks was performed using Mnova 7

Cite this: DOI: 10.1039/c0xx00000x

www.rsc.org/xxxxxx

ARTICLE TYPE

processing software. In the aliphatic oxygenated region, the relative abundances of side chains involved in the various interunit linkages were estimated from the C_{α} - H_{α} correlations to avoid possible interference from homonuclear ^1H - ^1H couplings, except for substructure **I**, for which C_{γ} - H_{γ} correlations had to be used. In the aromatic/unsaturated region, C_6 - H_6 and/or C_2 - H_2 correlations from **H**, **G**, and **S** lignin units and from *p*-coumarate (PCA) and ferulate (FA) were used to estimate their relative abundances. The PCA and FA integration volumes were not included for the calculation of the total aromatic units. For the model compounds, ca. 34 mg was dissolved in 0.500 mL of DMSO- d_6 . In this case, the total aromatic units were calculated from the sum of the volume integrals of the correlations signals in ring A ($A_2 + A_5 + A_6$ divided by 3) and in ring B ($B_1 + B_2 + B_5 + B_6$ divided by 4). For the ^{13}C experiments, the same samples from the HSQC analysis were used. In determining the *threo* and *erythro* β -O-4' linkages abundances, the integrals of the respective C_2 signals were used for the total aromatic units calculation. For the determination of the relative carbonyl abundances, the sum of all aromatic C signals ($A_{1-6} + B_{1-6}$) were used. The ^{31}P NMR analyses after phosphorylation of the lignin hydroxyl groups was performed according to the literature.⁴⁴ The standard deviations on the corresponding hydroxyl group contents that can be expected are relatively low.⁴⁵

Model compound experiments. The model compounds 1-(4-hydroxy-3-methoxyphenyl)-2-(2-methoxyphenoxy)propane-1,3-diol (guaiaacylglycerol- β -guaiaacyl ether, GGGE) and 3-hydroxy-1-(4-hydroxy-3-methoxyphenyl)-2-(2-methoxyphenoxy)propan-1-one (2-(2-methoxyphenoxy)acetoguaiacone, MPAG) were synthesised as described in the ESI. Note that in the GGGE compound both *threo* and *erythro* diastereomers were present. After drying under vacuum at room temperature, 125 mg were used under the same conditions as applied in experiment d2 with the same dry matter:NH₃ ratio and dry matter:DCM ratio. The DCM extraction time was 30 min. The mass recovery was 100% for both compounds.

Results and Discussion

Lignin solubilization and extraction experiments. In a typical reaction, 50–500 mg of a lignin sample was solubilised in 30 mL liquid ammonia under moderate conditions as described in the experimental section. At room temperature, 250 mg Kraft lignin (pine wood) was solubilized instantaneously, giving a clear red solution by means of detection of the light transmittance at one reactor window of the autoclave and with the light source at the opposite window (Fig. 1a). A darker red solution (wine colour) was observed when dissolving 500 mg kraft lignin (Fig. 1b). However, with this system higher solubility ranges could not be evaluated, as it was not clear if the absence of the light transmittance at higher concentrations was due to the presence of lignin particles in suspension scattering the light (when insoluble) or to a shorter light path length or stronger light source was

needed to detect light transmittance (when soluble). This can be observed very easily by checking the light transmittance at different heights of a conical extraction funnel with lignin solutions in aqueous sodium hydroxide at different lignin concentrations (Fig. 1g). Note that liquid ammonia can also be charged in a glass conical extraction funnel, but for safety reasons only at temperature ranges below its boiling point (-33 °C, 1 bar). However, at these temperatures the lignins were not soluble, even after prolonged stirring.

The P1000 soda lignin (mixed wheat straw/Sarkanda grass) was also solubilized up to 500 mg in 30 mL liquid ammonia, but at a significant slower rate. At room temperature, it took almost 3 h to solubilize 250 mg P1000 soda lignin in 30 mL liquid ammonia. However, when 45 bars of argon was charged to the autoclave and the temperature was set at 85 °C (90 bars total pressure), the lignin was solubilized within 30 min, giving an orange solution (Fig. 1c). The organosolv lignins were solubilized in amounts up to 125 mg in 30 mL liquid ammonia. Figure 1d shows 50 mg poplar organosolv lignin (orange solution) and Figure 1e shows 125 mg birch organosolv lignin (red solution). At higher concentrations, again, it was not clear if the lignin was insoluble or too concentrated to observe light transmittance at the fixed light distance path between the reactor windows. Figure 1f shows 250 mg wheat straw organosolv lignin in 30 mL liquid ammonia. However, the time needed to dissolve 125 mg organosolv lignin increased as birch < poplar < wheat straw. Birch organosolv lignin was dissolved almost instantaneously. Finally, we explored the solubility of a native grass lignin (MWL from elephant grass). More information on these experiments is available in the ESI (Fig. S2). 125 mg MWL was dissolved instantaneously at room temperature, although some residual MWL particles were still present. Upon heating, the MWL was dissolved completely. These results indicate that grass lignins dissolve more slowly in liquid ammonia than wood lignins. In general, these results confirmed the solubility of technical lignins (kraft, soda and organosolv) and native lignins in liquid ammonia at a moderate temperature compared to high-pressure water or steam (130–225 °C).⁴⁶

((Figure 1))

By releasing the pressure, ammonia could be flushed out as a gas, avoiding any salt removal or extraction of an aqueous phase involving large volumes of organic solvents. We could then separate the low molecular weight aromatics from the solid residue by extraction with an organic solvent. The choice of solvent is important.^{47, 48} At low pressures on a lab scale, DCM is a suitable solvent since it dissolves well aromatic monomers³⁷ while dissolving lignin oligomers only to a limited extent, at least in the case of the P1000 soda lignin. However, it is very difficult to find a solvent which separates exclusively phenolic monomers in one single extraction step with high yield. On a larger scale and at higher pressures, methanol could be used.⁴⁹

Extracting the P1000 soda lignin with DCM gave up to 20 wt% of solubles (Table 1, entry 1). Using DCM after treating with ammonia gave 16 wt% solubles (entry 3). Extracting again the DCM extracted lignin gave only 3 wt% additional solubles (entry 2), while 14 wt% were obtained when the lignin was first dissolved in liquid ammonia at room temperature (entry 6). No difference was found when dissolving the lignin in liquid ammonia before the first DCM extraction (entry 8). Figure 2 shows the dominant coniferyl derived compounds identified by GC-MS. A detailed description of the main extractives is given in the ESI (Fig. S3). We did not identify any free *p*-coumaric or ferulic acid or any of their esters in the DCM extracts. Most probably they remained in the residual lignin. However, they might also decarboxylate in the GC injector to vinylphenol and vinylguaiacol, respectively. Both of these were present in significant amounts in the DCM extracts. However, they can also be produced from normal lignin units.

((Table 1))

((Figure 2))

Quantitative analysis of lignin extracts is very challenging, and proving actual C–C and C–O bond scission is not trivial. To study whether the residual lignin structure changes during the dissolution process, we used a combination of analytical methods: infrared spectroscopy (IR), size exclusion chromatography (SEC), elemental analysis (ICP) and NMR.

IR spectroscopy. Figure 3 shows the IR absorption bands of the P1000 soda lignin, with characteristic bands that were assigned.⁵⁰ The CO₂ bands reflect the fact that samples were directly pressed using a diamond press. The dissolution of the lignin in ammonia left most of the functional groups intact. The intensity of the broad band at 3415 cm⁻¹, corresponding to the phenol and aliphatic hydroxyl groups, increased in the NH₃/DCM lignins (experiments d1–d3) compared to the P1000 soda lignin (a). At 2950 cm⁻¹ we see aromatic methoxy groups, as well as side-chain methyl and methylene groups. Pawlak *et al.* studied wood components' degradation in liquid ammonia.⁵¹ They used IR spectroscopy to characterize the modification on the structural groups of hemicellulose, cellulose and lignin, finding that the carbonyl/carboxyl region was affected. Indeed, we see differences in intensity of the bands located around 1650 cm⁻¹ which is due to C=O and C–N stretching and C–N–H bending in amides, however, in much less extent than in normal ammonolysis reactions.^{51, 52} Another broad N–H band appeared around 3170 cm⁻¹ for all samples in contact with liquid ammonia. Bands at 1595, 1508 and 1450 cm⁻¹ are common for all lignin sources and represented the aromatic ring vibration and C–H bond deformations. Other common weak vibrations in lignin pertain to the phenol OH groups and methyl C–H in methyl group, observed around 1370–1375 cm⁻¹. Characteristic guaiacyl bands were distributed on several positions; 1269 cm⁻¹ aromatic ring and C=O stretch; and 1122 cm⁻¹ and 809–850 cm⁻¹ C–H deformation⁴⁷, for which no major changes were observed. Significant band intensity changes were observed in the 850–1105 cm⁻¹ region. They most probably reflect C–O–C stretches

in (substituted) xylans.⁵³

((Figure 3))

Size exclusion chromatography (SEC). To get a general picture of the molecular weight distribution of the remaining solid, we used SEC. The molecular weight distribution (M_w) and the polydispersity index (PDI) of all the lignin residues actually increased (Table 2), especially at high temperature and in the presence of H₂ (entries 5 and 7). In general at low temperature, the M_w and the PDI remained more stable (entries 3 and 6) than at high temperature (entries 4, 5 and 7). At first sight, these results show that no depolymerisation took place by cleavage of lignin bonds. The extraction of low molecular weight compounds gave a residue with higher M_w . However, based on the rather strong PDI increments, we doubt if the molecular weight increments were exclusively the result from the extraction of low molecular weight compounds. However, it is difficult to observe single process effects from the SEC results, as these only show cumulative effects.

((Table 2))

Elemental analysis (ICP). Interestingly, the elemental composition of the solid residue of lignin changed after reaction in ammonia. Elemental analysis showed that the nitrogen content in the NH₃/DCM samples (d1–d3) tripled (Table 3). These findings show, together with the SEC results, that ammonia is not an innocent solvent. It does dissolve lignin, but nitrogen atoms from the ammonia (there is no other source of nitrogen in the system) bond with the lignin and the structure rearranges to larger polymer fragments. ICP analysis of the DCM solubles showed that the oxygen content is lower and the carbon content is higher when working at 85 °C in the presence of hydrogen (see ESI, Table S3, entry 4). Generally, using hydrogen reduces the oxygen content of the extracted monomers and dimers. We expect that at high temperature also more volatiles are produced, which would explain the lowering of the mass balance to 70–85%, depending on the vapour pressure.³⁷ Note that the nitrogen content also increased. Only one nitrogen-containing compound was identified in the DCM soluble fraction of experiments d1–d3, in particular at high temperature (d2–d3). This compound was not present in the DCM extracted P1000 soda lignin (b). We could not identify its exact structure of this compound, but the mass fragments *m/z* 77, 105 and 121, indicate that it contains a benzamide moiety.

((Table 3))

NMR. Further insight into the structural changes was obtained using HSQC 2D-NMR. Figure 4a shows the HSQC spectra of the P1000 soda lignin (a) and the ammonia treated lignins (d1 and d3), Figure 4b shows the substructures corresponding to the identified ¹³C–¹H correlations, and Table 4 shows the corresponding abundances of the interunit linkages per 100 aromatic units. The spectra from samples c and d2 are included in the ESI (Figure S4). The correlations of the β–β' linkages (C) in the spectra of samples d1–d3 are much less

Cite this: DOI: 10.1039/c0xx00000x

www.rsc.org/xxxxxx

ARTICLE TYPE

intense with respect to the correlation intensity of the β -O-4' linkages. In fact, the correlation in position γ at 71.0/4.17 in the spectrum of samples d1 and d2 completely disappeared. Interestingly, in the spectrum of sample d1 six new signals appeared at 3.24/70.7, 3.70/74.9, 4.03/75.4, 4.08/72.0, 4.22/87.4 and 4.34/81.0, which were completely absent in the spectra of the P1000 soda lignin and the DCM extracted lignins (a-c) and almost completely in the NH_3 /DCM lignins (d2-d3). However, these signals could not be assigned yet. The solubilisation in ammonia clearly removed syringyl units, leaving a residual lignin with a lower S/G ratio (Table 4). The β -O-4' linkages in sample d2 were less abundant than in the samples d1 and d3, in agreement with the higher extraction yield (Table 2). However, compared to the P1000 soda lignin (a) and the DCM/DCM extracted lignin (c), the β -O-4' linkage abundances were higher in the NH_3 /DCM lignins. This is surprising as the extraction yield of experiments a and c were similar to the yield of experiments d1-d3.

Assuming that no new β -O-4' linkages were formed, we addressed this effect to the extraction of low molecular weight fractions, giving rise to a lower total aromatic content in the residual lignin. We consider the possibility that some low molecular weight compounds were lost during the NH_3 evacuation and the N_2 purging, although this was difficult to see from the mass balance due to interference with the lubricant (Table 1). Correlation signals from xylans were identified in the C1, C2, C3, C4 and C5 nuclei. The signal from the anomeric C1 at 4.27/101.5 ppm is not shown in Figure 4b. In accordance with the corresponding xylan IR bands, the ratio of xylan units per 100 aromatic lignin units increased, especially in the presence of H_2 (sample d3). We also analysed the P1000 soda lignin (a), the DCM/DCM extracted lignin (c) and the lignin after the NH_3 /DCM treatment at room temperature (d1) with ^{31}P -NMR. The corresponding spectra are shown in the ESI (Fig. S8) and the quantification is shown in Table 6. The analysis showed that the residual lignin contained the same amount of aliphatic hydroxyl groups, but 8% less phenol and 6% less carboxyl groups (Table 6). However, this was also observed in the DCM/DCM extracted lignin (c). Thus, this effect was maybe only a consequence of the DCM extraction.

((Figure 4a))

((Figure 4b))

((Table 4))

Model compound experiments. Although the guaiacylglycerol- β -guaiacyl ether substructure, with (MPAG) or without (GGGE) a carbonyl group in position α , is not the most representative one, especially in soda lignins, we wanted to confirm that no β -O-4' ether linkages were cleaved during the solubilisation in ammonia. Therefore, we applied experiment d2

to the model compounds GGGE and MPAG. The corresponding HSQC and ^{13}C spectra are shown in the ESI (Fig. S6 and S7), and the corresponding quantification is shown in Table 5. We observed that the β -O-4' linkage was cleaved only to a minor extent (7% based on the HSQC analysis). This is not surprising, as ammonia is a weak base. When using ^{13}C NMR, where the signals of the carbons in the side chain as well in the C_2 aromatic carbons from *threo* and *erythro* diastereomers are separated, we observed more bond cleavage (11% and 14%, respectively). ((Table 5))

Although the carbonyl content cannot be determined quantitatively by ^{13}C NMR (due to the strong differences in relaxation delays between quaternary and non-quaternary carbons), one can compare them relative to the aromatic content to see if ammonia interacted with native lignin carbonyl groups (Table 5). The carbonyl content (relative to the aromatic content) of the model compound MPAG was only 4% smaller after the NH_3 /DCM treatment, much smaller than under normal ammonolysis conditions where the lignin is oxidized with molecular oxygen.⁵² Meier et al. stated that the ammonia interacts with the lignin carboxyl groups. However, we could not confirm this as we did not achieve a satisfactory ^{13}C spectrum of the DCM/ NH_3 treated lignins, possibly due to their higher molecular weights. Although Meier et al. demonstrated that during ammonolysis the carboxyl groups represent the nucleation points where NH_4^+ salts could be formed, we believe that the 6% lower carboxyl group content in the residual lignin (Table 6) is not due to ammonolysis, as the authors clearly stated that a considerable oxygen pressure is needed for this and peroxidation (creating oxidized structures) prior to ammonolysis is not an alternative. Moreover, Table 6 shows that the lower carboxyl content might be due only to the DCM extraction. All these results show that ammonolysis is not the main factor for the higher molecular weight and polydispersity of the ammonia solubilized lignins. We feel that this can be the result of the different chemical behaviour of organic compounds in liquid ammonia, and possibly due to flash precipitation when the liquid ammonia is released.^{36, 37, 38}

Conclusions

Our results demonstrate the effectiveness of liquid ammonia as a solvent for lignins under mild conditions, in particular for kraft and soda lignins, and somewhat less for organosolv lignins and native lignins. Kraft lignin concentrations up to at least 16.7 g/L were soluble in liquid ammonia (higher solubilities could not be evaluated with the present system). Apparently, liquid ammonia dissolves wood lignins quicker than grass lignins. After solubilisation in liquid ammonia and extraction with dichloromethane, the residual lignin was depleted in syringyl

units, phenylcoumaran and resinol substructures, but enriched in β -O-4' aryl ether substructures. No correlation was found with the phenol and aliphatic hydroxyl group content. Elemental analysis of the lignin residue showed that some nitrogen from the ammonia was incorporated in the residual lignin, and the lignin fragments rearranged to higher molecular weight fractions, especially at high temperature. Nevertheless, considering that ammonia is relatively cheap and can be recycled very efficiently (e.g. in the AFEX process), we feel that this lignin solubilisation method deserves more attention.

Acknowledgments

This research was performed within the framework of the CatchBio program. The authors gratefully acknowledge the support of the Smart Mix Program of the Netherlands Ministry of Economic Affairs, and the Netherlands Ministry of Education, Culture and Science. We thank Mrs. J. van der Putten for the SEC measurements, Dr. R. Gosselink, Dr. S. Thiyagarajan and Dr. G. Frissen for the NMR measurements, and D. Franciolus for the synthesis of the model compounds.

† Electronic Supplementary Information (ESI) available: [details of any supplementary information available should be included here]. See DOI: 10.1039/b000000x/.

^a Van 't Hoff Institute for Molecular Sciences, University of Amsterdam, Science Park 904, 1098 XH Amsterdam, The Netherlands
Fax: +31 20 525 560
E-mail: g.rothenberg@uva.nl
Homepage: <http://hims.uva.nl/hcsc>

^b Wageningen UR Food & Biobased Research
Bornse Weilanden 9
6708 WG Wageningen The Netherlands
Fax: (+)31 31 748 301

Cite this: DOI: 10.1039/c0xx00000x

www.rsc.org/xxxxxx

ARTICLE TYPE

References

1. P. N. R. Vennestrøm, C. M. Osmundsen, C. H. Christensen and E. Taarning, *Angew. Chem. Int. Ed.*, 2011, **50**, 10502-10509.
2. B. Kamm and M. Kamm, *Appl. Microbiol. Biotechnol.*, 2004, **64**, 137-145.
3. N. R. Shiju, D. R. Brown, K. Wilson and G. Rothenberg, *Top. Catal.*, 2010, **53**, 1217-1223.
4. G. S. Macala, T. D. Matson, C. L. Johnson, R. S. Lewis, A. V. Iretskii and P. C. Ford, *ChemSusChem*, 2009, **2**, 215-217.
5. L. Durán Pachón, M. B. Thathagar, F. Hartl and G. Rothenberg, *Phys. Chem. Chem. Phys.*, 2006, **8**, 151-157.
6. F. de Clippel, M. Dusselier, R. Van Rompaey, P. Vanelderen, J. Dijkmans, E. Makshina, L. Giebler, S. Oswald, G. V. Baron, J. F. M. Denayer, P. P. Pescarmona, P. A. Jacobs and B. F. Sels, *J. Am. Chem. Soc.*, 2012, **134**, 10089-10101.
7. R. V. van Ree and E. Annevelink, *Status Report Biorefinery 2007 (Agrotechnology and Food Sciences Group)*, 2007.
8. A. Gani and I. Naruse, *Renew. Energy*, 2007, **32**, 649-661.
9. Z. Strassberger, S. Tanase and G. Rothenberg, *RSC Adv.*, 2014, **4**, 25310-25318.
10. G. Gellerstedt, J. Li, I. Eide, M. Kleinert and T. Barth, *Energy & Fuels*, 2008, **22**, 4240-4244.
11. M. Kaylen, D. L. Van Dyne, Y.-S. Choi and M. Blase, *Bioresour. Technol.*, 2000, **72**, 19-32.
12. T. D. Matson, K. Barta, A. V. Iretskii and P. C. Ford, *J. Am. Chem. Soc.*, 2011, **133**, 14090-14097.
13. D. M. Alonso, J. Q. Bond and J. A. Dumesic, *Green Chem.*, 2010, **12**, 1493-1513.
14. D. Stewart, *Ind. Crops Prod.*, 2008, **27**, 202-207.
15. J. Zakzeski, P. C. A. Bruijninx, A. L. Jongerijs and B. M. Weckhuysen, *Chem. Rev.*, 2010, **110**, 3552-3599.
16. P. Azadi, O. R. Inderwildi, R. Farnood and D. A. King, *Renewable and Sustainable Energy Rev.*, 2013, **21**, 506-523.
17. G. W. Huber, S. Iborra and A. Corma, *Chem. Rev.*, 2006, **106**, 4044-4098.
18. A.-S. Jönsson, A.-K. Nordin and O. Wallberg, *Chem. Eng. Res. Des.*, 2008, **86**, 1271-1280.
19. F. Öhman, H. Theliander, P. Tomani and P. Axegard, Method for separating lignin from black liquor, (2008).
20. K. Barta, T. D. Matson, M. L. Fettig, S. L. Scott, A. V. Iretskii and P. C. Ford, *Green Chem.*, 2010, **12**, 1640-1647.
21. J. R. Regalbuto, *Science*, 2009, **325**, 822-824.
22. J. S. Shabtai, W. W. Zmierzczak and E. Chornet, Process for Conversion of Lignin to Reformulated, Partially Oxygenated Gasoline, (2001).
23. Z. Ma, E. Troussard and J. A. van Bokhoven, *Appl. Catal., A*, 2012, **423-424**, 130-136.
24. M. M. Yan and C. B. Purves, *Can. J. Chem.*, 1956, **34**, 1747-1755.
25. B. Bals, C. Rogers, M. Jin, V. Balan and B. Dale, *Biotechnol. Biofuels*, 2010, **3**, 1.
26. T.-A. D. Nguyen, K.-R. Kim, S. J. Han, H. Y. Cho, J. W. Kim, S. M. Park, J. C. Park and S. J. Sim, *Bioresour. Technol.*, 2010, **101**, 7432-7438.
27. N. Sarkar, S. K. Ghosh, S. Bannerjee and K. Aikat, *Renew. Energy*, 2012, **37**, 19-27.
28. J. J. Lagowski, *Synth. React. Inorg. Met.-Org. Chem.*, 2007, **37**, 115-153.
29. W. C. Johnson, *J. Chem. Educ.*, 1935, **12**, 249.
30. J. B. Gill, *J. Chem. Educ.*, 1970, **47**, 619.
31. V. F. Hnizda and C. A. Kraus, *J. Am. Chem. Soc.*, 1949, **71**, 1565-1575.
32. I. Warshawsky, *J. Inorg. Nucl. Chem.*, 1963, **25**, 919-921.
33. F. London, *Trans. Faraday Soc.*, 1937, **33**, 8b-26.
34. E. Burello and G. Rothenberg, *Adv. Synth. Catal.*, 2003, **345**, 1334-1340.
35. P. Ji, PhD. Thesis, University of Huddersfield, 2011.
36. P. Ji, J. H. Atherton and M.I. Page, *Org. Biomol Chem.*, 2012, **10**, 5732-5739.
37. J.H. Atherton, M.I. Page and H. Sun, *J. Phys. Org. Chem.*, 2013, **26**, 1038-1043.
38. J.J. Lagowski, Department of Chemistry, The University of Texas, Austin, Texas, 78712, U.S.A.
39. J.C. del Río, P. Prinsen, J. Rencoret, L. Nieto, J. Jiménez-Barbero, J. Ralph, A.T. Martínez and A. Gutiérrez, *J. Agr. Food Chem.*, 2012, **60**, 3619-3634.
40. J. Ralph, J.M. Marita, S.A. Ralph, R.D. Hatfield, F. Lu, R.M. Ede, J. Peng, S. Quideau, R.F. Helm, J.H. Grabber, H. Kim, G. Jimenez-Monteon, Y. Zhang, H.-J.G. Jung, L.L. Landucci, J.J. MacKay, R.R. Sederoff, C. Chapple, and A.M. Boudet. Solution-state NMR of lignin. In *Advances in lignocellulosics characterization*; D.S. Argyropoulos. Ed.; Tappi Press: Atlanta, 1999; pp 55-108.
41. S.A. Ralph, J. Ralph and L. Landucci. *NMR database of lignin and cell wall model compounds*; US Forest Prod. Lab.: One Gifford Pinchot Dr. Madison, WI 53705 (<http://ars.usda.gov/Services/docs.htm?docid=10491>) (accessed: January 2009), 2004.
42. A.T. Martínez, J. Rencoret, G. Marques, A. Gutiérrez, D. Ibarra, J. Jiménez-Barbero and J.C. del Río, *Phytochemistry*, 2008, **69**, 2831-2843.
43. J. Ralph and L.L. Landucci. NMR of Lignins. In *Lignin and Lignans; Advances in Chemistry*; C. Hetiner, D.R. Dimmel and J.A. Schmidt, Eds.; CRC Press (Taylor & Francis Group): Boca Raton, FL, 2010; pp 137-234.
44. R.J.A. Gosselink, J.E.G. van Dam, E. de Jong, E.L. Scott, J.P.M. Sanders, J. Li and G. Gellerstedt. Fractionation, analysis, and PCA modeling of properties of four technical lignins for prediction of their application potential in binders. *Holzforschung*, 2010, **64(1)**, 193-200.
45. Prinsen P., Rencoret J., Gutiérrez A., Liitiä T., Tamminen T., Colodette J.L., Berbis M.A., Martínez A.T. and del Río J.C, *Ind. Eng. Chem. Res.*, 2013, **52**, 15702-15712.
46. J. Zakzeski and B.M. Weckhuysen, *ChemSusChem*, 2011, **4**, 369-378.
47. C. Schuerch, *J. Am. Chem. Soc.*, 1952, **74**, 5061-5067.
48. A. Arshanitsa, J. Ponomarenko, T. Dizhbite, A. Andersone, R. J. A. Gosselink, J. van der Putten, M. Lauberts and G. Telysheva, *J. Anal. Appl. Pyrolysis*, 2013, **103 (S1)**, 78-85.

49. K. Wang, F. Xu and R. Sun, *Int. J. Mol. Sci.*, 2010, **11**, 2988-3001.
50. C. G. Boeriu, D. Bravo, R. J. A. Gosselink and J. E. G. van Dam, *Ind. Crops Prod.*, 2004, **20**, 205-218.
51. Z. Pawlak and A. S. Pawlak, *Appl. Spectrosc. Rev.*, 1997, **32**, 349-383.
52. D. Meier, V. Zuñiga-Partida, F. Ramirez-Cano, N.-C. Hahn and O. Faix, *Bioresource Technol.*, 1994, **49**, 121-128.
53. A.-P. Zhang, C.-F. Liu, R.-C. Sun and J. Xiu, *BioRes.*, 2013, **8(2)**, 1604-1614.

10

Table 1: Extraction conditions and product distribution for the P1000 soda lignin using liquid ammonia.

Entry	Sample	Extraction sequence	t (h)	p (bar)	T (°C)	Gas	DCM Solubles					
							Yield (wt %)	Monomers	Dimers/Trimers (area %) ^[1]	Unknown ^[2]	Residual lignin (wt%)	Mass balance (wt%)
1	b	DCM	-	-	-	-	20	43	49	8	77	97
2	c	DCM/DCM	-	-	-	-	3	48	40	12	94	98
3	d1	NH ₃ /DCM	24	7	18	NH ₃	16	25	68	5	87	103
4	d2	NH ₃ /DCM	3	90	85	NH ₃ /Ar	24	26	41	22	80	104
5	d3	NH ₃ /DCM	3	90	85	NH ₃ /H ₂	16	30	59	4	70	86
6	e1	DCM/NH ₃ /DCM	24	7	18	NH ₃	14	15	48	22	88	102
7	e2	DCM/NH ₃ /DCM	3	90	85	NH ₃ /H ₂	4	5	67	13	74	78
8	f	NH ₃ /DCM/NH ₃ /DCM	24	7	18	NH ₃	14	33	36	25	55	68

^[1] Peak areas of individual extractives were normalized to 100% and calculated as relative percentages.

^[2] By unknown we include compounds that could not be identify by the MS library and heavy alkane (such as hexadecane/dodecane) contamination, which came from the ammonia bottle itself, accounting for the overextended mass balance.

15

Table 2: Molecular weights (M_w) and polydispersities (PDI) of the P1000 soda lignin and the residue after different extraction sequences.

Entry	Sample	Extraction sequence	M _w	M _n	Polydispersity (PDI)
1	a	P1000 soda lignin	5000	298	16.8
2	b	DCM	5800	414	14.0
3	d1	NH ₃ /DCM ^[1]	6900	397	17.4
4	d2	NH ₃ /DCM ^[2]	9223	441	20.9
5	d3	NH ₃ /DCM ^[3]	13700	461	29.7
6	e1	DCM/NH ₃ /DCM ^[1]	8900	567	15.7
7	e2	DCM/NH ₃ /DCM ^[3]	9900	497	19.9
8	f	NH ₃ /DCM/ NH ₃ /DCM ^[1]	12300	583	21.1

^[1] 7 bars autogeneous NH₃ pressure, 18 °C.

^[2] 90 bars total pressure of Ar and NH₃, 85 °C .

^[3] 90 bars total pressure of H₂ and NH₃, 85 °C.

20

Table 3: Elemental analysis of the P1000 soda lignin and the residue after different extraction sequences.

Entry	Sample	Extraction sequence	%C	%H	%N	%O
1	a	P1000 soda lignin	61.7	5.7	1.0	5.7
2	b	DCM	60.2	6.0	1.1	6.0
3	d1	NH ₃ /DCM ^[1]	58.1	6.2	2.6	6.2
4	d2	NH ₃ /DCM ^[2]	57.3	5.8	2.8	5.8
5	d3	NH ₃ /DCM ^[3]	57.6	6.0	3.4	6.0

^[1] 7 bars autogeneous NH₃ pressure, 18 °C.

^[2] 90 bars total pressure of Ar and NH₃, 85 °C .

^[3] 90 bars total pressure of H₂ and NH₃, 85 °C.

25

Table 4. Lignin interunit linkages, end-groups, aromatic units, S/G ratio and hydroxycinnamate content, and xylan units from the integration of ^{13}C - ^1H correlation peaks in the HSQC spectra of the P1000 soda lignin (**a**) and the residue after different extraction sequences (**c** and **d1-d3**).

Interunit linkages (per 100 aromatic units)	P1000 soda (a)	Lignin			
		DCM/ DCM (c)	NH_3/DCM , 18 °C, 7 bars NH_3 (d1)	NH_3/DCM , 85 °C, 90 bars ($\text{NH}_3 + \text{Ar}$) (d2)	NH_3/DCM , 85 °C, 90 bars $\text{NH}_3 + \text{H}_2$ (d3)
β -O-4' aryl ethers (A)	6 (\pm 1)	14	26	23 (\pm 2)	24
β -5' phenylcoumarans (B)	0.5 (\pm 0.2)	2.0	0.8	1.1 (\pm 0.3)	0.5
β - β' resinols (C)	1.4 (\pm 0.1)	1.2	0.4	0.4 (\pm 0.2)	0.6
Cinnamyl alcohol end groups (I)	21 (\pm 2)	17	11	12 (\pm 2)	11
Lignin aromatic units (%)					
H	2 (\pm 0)	1	5	4 (\pm 0)	3
G	31 (\pm 2)	28	40	40 (\pm 3)	46
S	61 (\pm 2)	69	52	54 (\pm 3)	48
S'	5 (\pm 1)	2	3	2 (\pm 1)	3
S/G	2.2 (\pm 0.2)	2.5	1.4	1.4 (\pm 0.2)	1.1
<i>p</i> -hydroxycinnamates (%)					
<i>p</i> -coumarates (PCA)	3 (\pm 1)	3	7	6 (\pm 2)	4
ferulates (FA)	3 (\pm 0)	1	8	7 (\pm 1)	8
Xylans (per 100 aromatic units) (X)	4 (\pm 1)	11	14	19 (\pm 4)	29

Table 5. β -O-4' aryl ether and carbonyl (C=O) abundances determined by HSQC and ^{13}C analysis in the model compounds GGGE (guaiacylglycerol- β -guaiacyl ether, as a mixture of *threo* and *erythro* diastereomers) and MPAG (2-(2-methoxyphenoxy)acetoguaiacone), and abundances after the NH_3/DCM treatment at 85 °C and 90 bars ($\text{NH}_3 + \text{Ar}$) (identical to the conditions of experiment **d2** with the P1000 soda lignin).

Interunit linkage (per 100 aromatic units)	GGGE	MPAG	GGGE after d2	MPAG after d2
HSQC				
β -O-4' aryl ether ^[1]	60	63	56	58
^{13}C				
<i>threo</i> β -O-4' aryl ether ^[2]	48	-	43	-
<i>erythro</i> β -O-4' aryl ether ^[2]	51	-	44	-
β -O-4' aryl ether ^[3]	-	47	-	47
Aromatic C / C=O ^[4]	-	12.9	-	13.5

^[1] Calculated from the ^1H - ^{13}C correlation in α relative to the sum of the correlations in the aromatic rings A and B.

^[2] Calculated from the ^{13}C signal area in α relative to the sum of the areas of the C2 signals in the aromatic rings A en B.

^[3] Calculated from the ^{13}C signal area in β relative to the sum of all signal areas in the aromatic rings A and B. ^[4] Calculated from the sum of all ^{13}C signal areas in the aromatic rings A and B relative to the area of the C=O signal.

Table 6: Hydroxyl group content determined by ^{31}P -NMR of the P1000 soda lignin (**a**), the DCM/DCM extracted lignin (**c**) and the lignin after the NH_3 /DCM treatment at room temperature and autogeneous pressure (**d1**).

Sample	Extraction sequence	Aliphatic OH			Phenol OH			Carboxyl OH	
		Syringyl + condensed	Guaiacyl	Catechol	<i>p</i> -Hydroxyphenyl	PCA	Total		
a	pristine lignin	1.59	2.30	0.86	0.15	0.44	0.09	3.85	1.16
c	DCM/DCM	1.66	1.93	0.70	0.09	0.39	0.08	3.19	1.07
d1	NH_3 /DCM ^[1]	1.62	2.14	0.81	0.11	0.44	0.06	3.55	1.09

^[1] 7 bars autogeneous NH_3 pressure, 18 °C.

5

Fig. 1: Image of the reaction autoclave window (the light is shining through another window at the back of the autoclave), showing (**a**) 250 mg Indulin AT kraft lignin; (**b**) 500 mg Indulin AT kraft lignin; (**c**) 250 mg P1000 soda lignin (**d**) 50 mg poplar organosolv; (**e**) 125 mg birch organosolv lignin and (**f**) 250 mg wheat straw organosolv lignin, (partially) dissolved in 30 mL liquid ammonia. (**g**) Light transmittance through a P1000 soda ligninaqueous solution (0.2 M NaOH) with the light source placed at different heights in a conical extraction funnel.

Fig. 2: Main monomers and dimers extracted after solubilisation in ammonia (a full list is included in the ESI): (**1**) guaiacol; (**2**) 2,5-dimethoxyacetophenone; (**3**) vanillideneacetone; (**4**) 2-phenoxy-1-phenylethanol and (**5**) 3-((3,4-dimethoxyphenoxy)methyl)-4-methoxybenzoic acid.

15

Fig. 3: FT-IR spectra of (**a**) soda P1000 lignin, (**d1**) after extraction sequence NH_3 /DCM (the NH_3 is at 7 bars autogeneous pressure and at 18 °C), (**d2**) after extraction sequence NH_3 /DCM (at 90 bars total pressure of NH_3 and argon and at 85 °C) and (**d3**) after extraction sequence NH_3 /DCM (at 90 bars total pressure of NH_3 and hydrogen and at 85 °C).

20 Fig. 4a. Side chain ($\delta_{\text{C}}/\delta_{\text{H}}$ 50–90/2.5–5.8) and aromatic/unsaturated ($\delta_{\text{C}}/\delta_{\text{H}}$ 90–155/5.5–8.0) regions in the 2D HSQC NMR spectra of (**a**) P1000 soda lignin, (**d1**) after extraction sequence NH_3 /DCM the NH_3 is at 7 bars autogeneous pressure and at 18 °C, and (**d3**) after extraction sequence NH_3 /DCM (at 90 bars total pressure of NH_3 and hydrogen and at 85 °C).

Fig. 4b: Main structures present in the (treated) P1000 soda lignins: (**A**) β -O-4' alkyl-aryl ethers; (**B**) β -5' phenylcoumarans; (**C**) β - β' resinols; (**I**) cinnamyl alcohol end groups; (**H**) *p*-hydroxyphenyl units; (**G**) guaiacyl units; (**S**) syringyl units; (**S***) syringyl units bearing a carboxyl group in position α ; (**PCA**) *p*-coumarates; (**FA**) ferulates and (**X**) xylans.

30

Figure 1

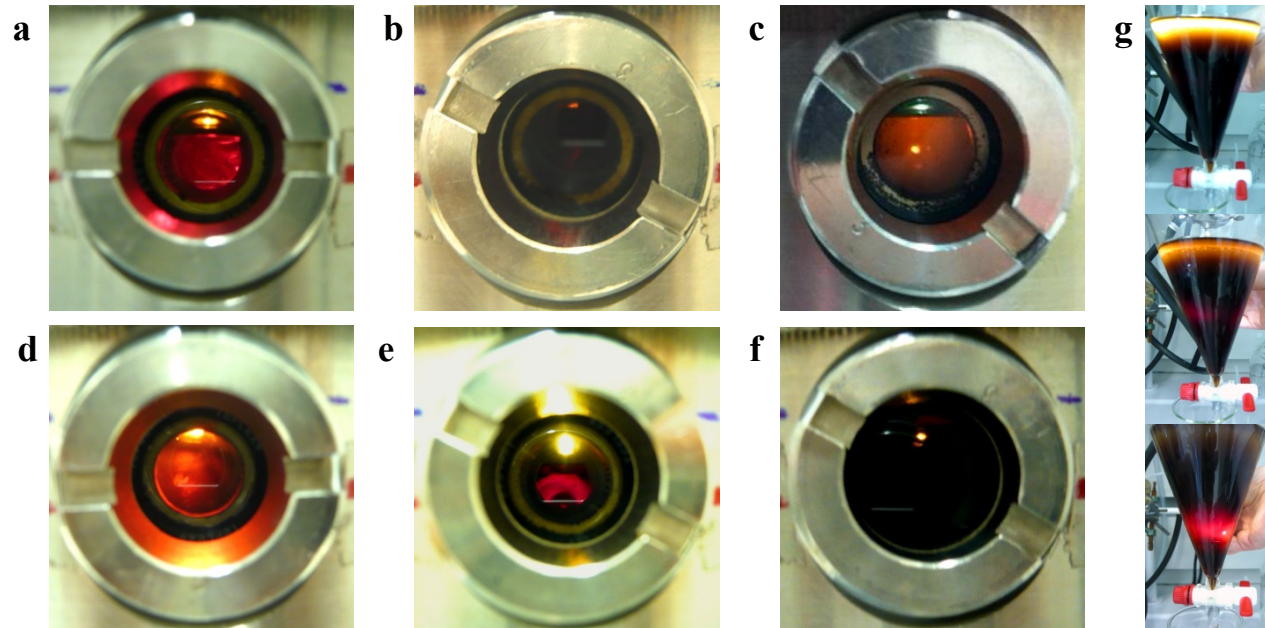


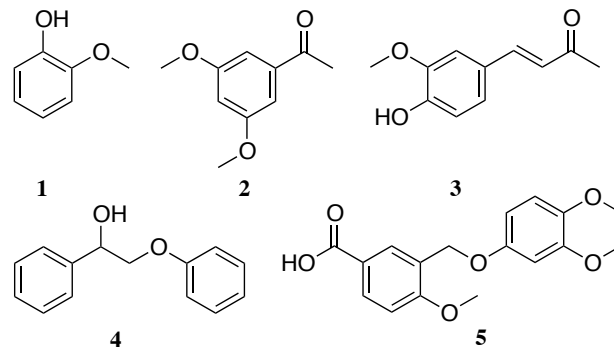
Figure 2

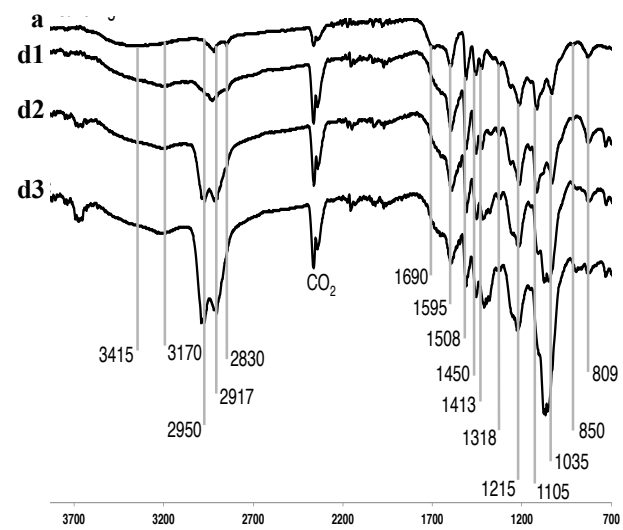
Figure 3

Figure 4a

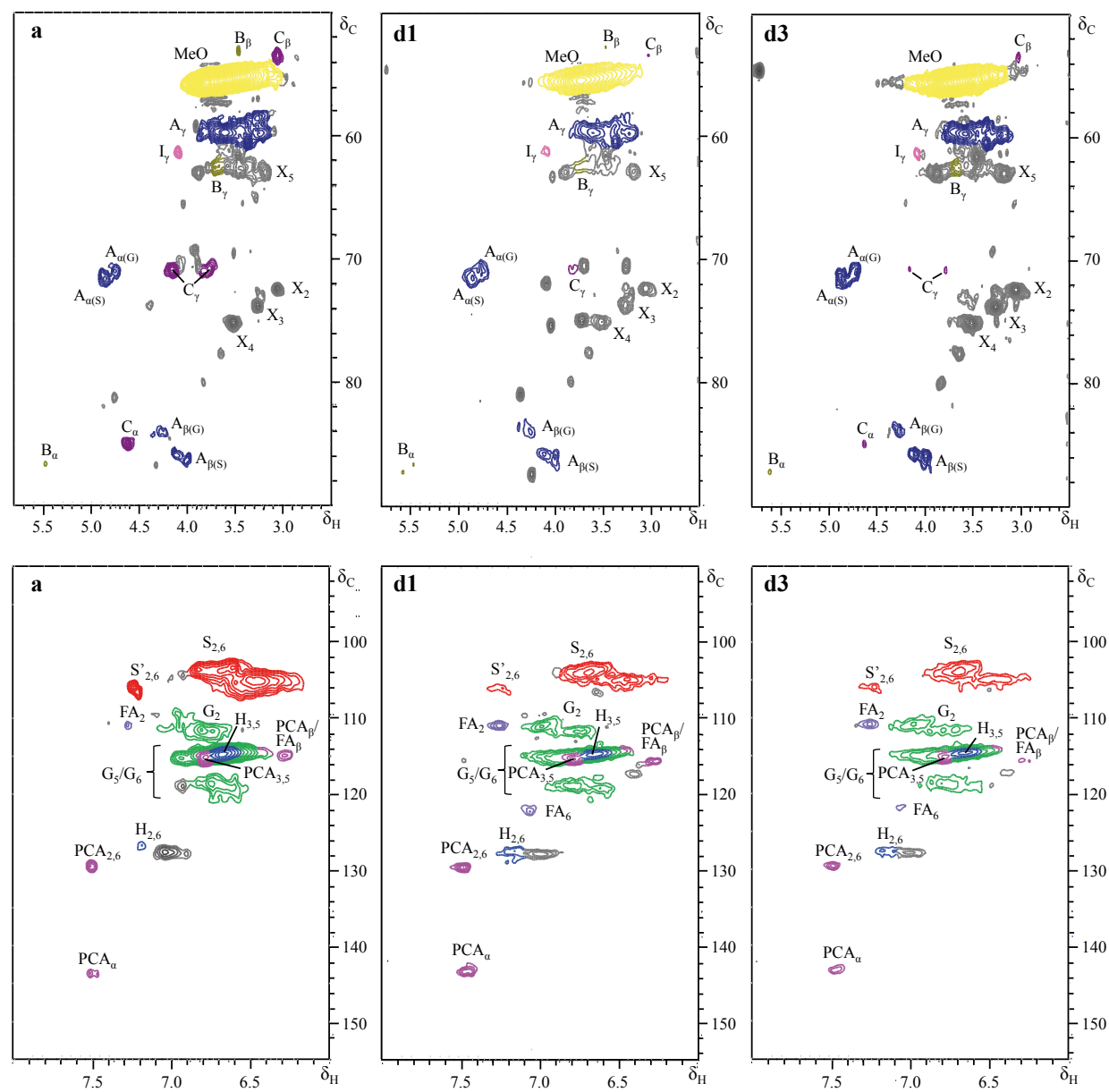
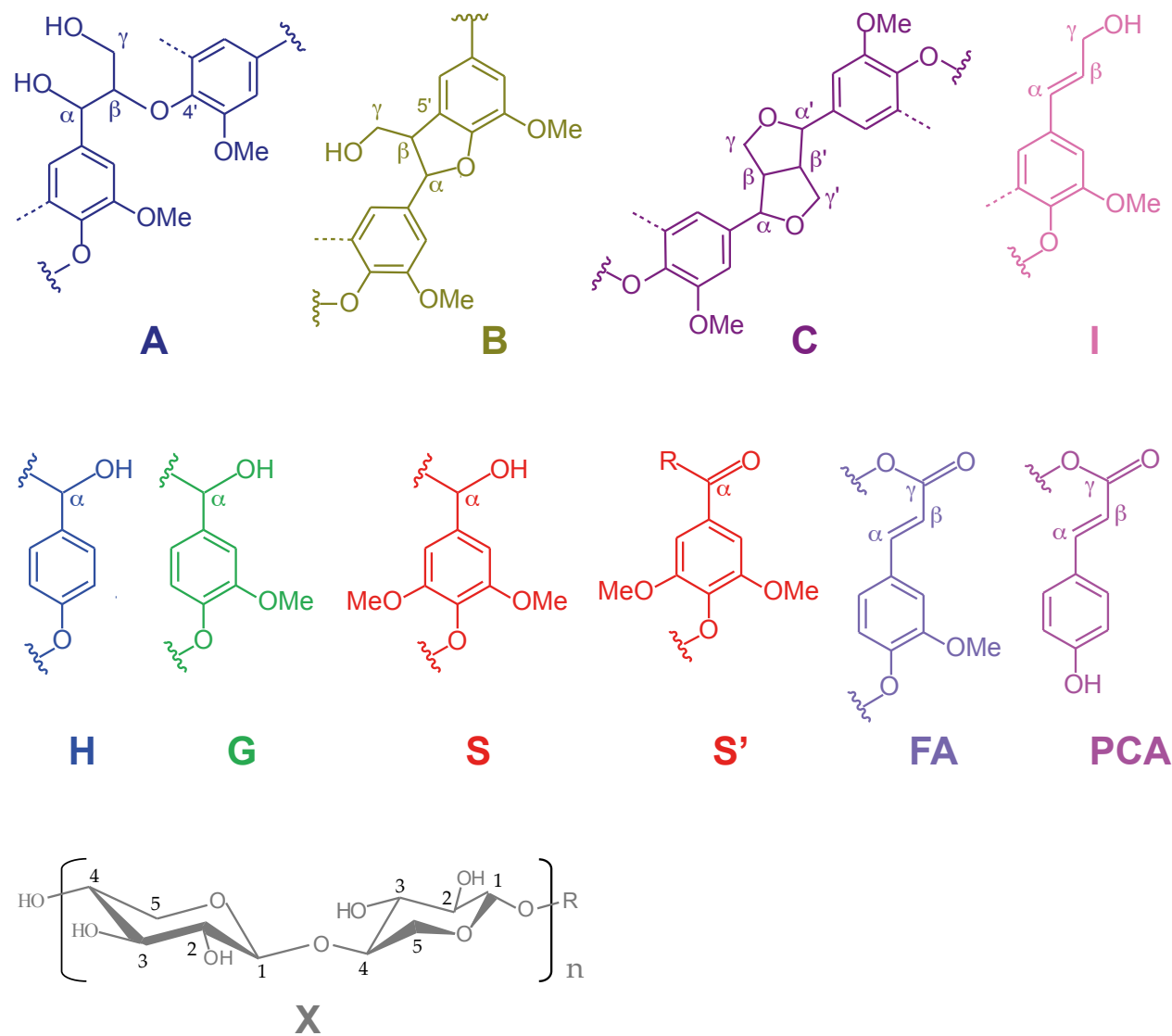


Figure 4b



Graphical abstract

It's definitely not water! The complete dissolution of lignin in pure liquid ammonia opens opportunities for converting this abundant yet stubborn biopolymer to useful aromatics under moderate conditions.

