

# RSC Advances



This is an *Accepted Manuscript*, which has been through the Royal Society of Chemistry peer review process and has been accepted for publication.

*Accepted Manuscripts* are published online shortly after acceptance, before technical editing, formatting and proof reading. Using this free service, authors can make their results available to the community, in citable form, before we publish the edited article. This *Accepted Manuscript* will be replaced by the edited, formatted and paginated article as soon as this is available.

You can find more information about *Accepted Manuscripts* in the [Information for Authors](#).

Please note that technical editing may introduce minor changes to the text and/or graphics, which may alter content. The journal's standard [Terms & Conditions](#) and the [Ethical guidelines](#) still apply. In no event shall the Royal Society of Chemistry be held responsible for any errors or omissions in this *Accepted Manuscript* or any consequences arising from the use of any information it contains.

Cite this: DOI: 10.1039/c0xx00000x

www.rsc.org/xxxxxx

PAPER

# Ultra-thick Li-ion battery electrodes using different cell size of metal foam current collectors

Gui Fu Yang, Kyung Yup Song and Seung Ki Joo

Research Institute of Advanced Materials (RIAM) and Department of Materials Science and Engineering, Seoul National University, Seoul 151-742, Korea.

(Telephone: +82-2-880-7442, Fax: +82-2-887-8791, yangguifu@gmail.com)

In this study, ultra-thick Li-ion battery electrodes are prepared using 450, 800 and 1200  $\mu\text{m}$  cell size of metal foam current collectors for large scale energy storage. The thickness and the mass loading of the electrodes are in the range of 300-600  $\mu\text{m}$  and 30-60  $\text{mg cm}^{-2}$  respectively which are much thicker and heavier comparing with the commercial electrodes. The cell using 1200  $\mu\text{m}$  cell size of metal foam exhibits the highest capacity (8.8  $\text{mA h cm}^{-2}$ ) at lower current density (1  $\text{mA cm}^{-2}$ ) owing to the highest mass loading of the active material. However, the deterioration of capacity and the voltage drop in plateau region are relatively much more with the increase of current density so that the capacity of cell using 800  $\mu\text{m}$  cell size of metal foam becomes to be highest. AC impedance analysis shows that the charge transfer resistance difference between the cells using 450 and 800  $\mu\text{m}$  cell size of metal foams is only 1.5  $\Omega \text{ cm}^2$  while it is 8  $\Omega \text{ cm}^2$  between the cells using 450 and 1200  $\mu\text{m}$  cell size of metal foams. Furthermore, the slope of straight line scanned at lower frequencies which has relation with the diffusion limitation of Li is much lower for the cell using 1200  $\mu\text{m}$  cell size of metal foam. Considering both of the cell capacity and rate performance, the cell size of metal foam between 450 and 800  $\mu\text{m}$  is promised for commercial Li-ion batteries. Although the kinetic performance can be improved furthermore by using the smaller cell size of metal foam, the cell capacity could be sacrificed due to the lower mass loading of the active material.

## A Introduction

Li-ion batteries are highly attractive for use in portable devices and clean electric vehicles because of their high energy density and high power density among other rechargeable batteries.<sup>1-7</sup> However, the major dilemma is that the thickness of active material for Li-ion battery is very thin. Our laboratory collected a lot of commercial Li-ion batteries and disconnected the batteries to measure the thickness of electrode. Generally, the thickness of active material is of around 50 to 100  $\mu\text{m}$  for the portable devices<sup>8</sup> whereas it is only 20 to 60  $\mu\text{m}$  for hybrid electrical vehicles to sustain high power performance.

To overcome the issue, in previous study, a three dimensional metal foam was used as a new current collector instead of foil-type current collector.<sup>9</sup> Considering the better kinetic performance of the cell using the metal foam, it is possible to increase the thickness of electrode to increase the cell capacity and save the inactive materials such as current collector and separator.<sup>9</sup> Because the mass loading of active material and the kinetic performance have relation with the cell size of metal foam current collector, it is worthwhile to optimize the cell by using the different cell size of metal foams. In our study, the material of metal foam is NiCrAl alloy and the tolerance of material is sufficiently high enough as a current collector for Li-ion batteries. The cyclic voltammetric analysis shows that there is no anodic peak with a potential range of 2.0-5.0 V vs  $\text{Li}^+/\text{Li}$ . Among the various active materials, carbon coated  $\text{LiFePO}_4$  is used as a positive electrode for Li-ion batteries, considering its low toxicity, high safety, potentially low cost, excellent life cycle,

high structural stability, and large theoretical capacity (170  $\text{mAh g}^{-1}$ ), and so on.<sup>10-23</sup>

## B Experimental

The commercial Ni foam substrate was manufactured by Ni plating on a three dimensional polyurethane and then the inner polyurethane was removed by heating. After the metallic NiCrAl alloy powder was adsorbed onto the resultant Ni foam, the substrate was reheated to obtain the NiCrAl alloy foam. The weight ratio of Ni, Cr and Al is 77:15:8. All the manufacture processes were carried out at Alantum Corporation. Different cell size of NiCrAl alloy foams were used as positive electrode current collectors for the carbon-coated lithium iron phosphate ( $\text{LiFePO}_4/\text{C}$ ) battery. Each cell size was 450, 800 and 1200  $\mu\text{m}$  respectively and the each thickness was of around 700, 800 and 1200  $\mu\text{m}$  respectively which were controlled via mechanical polishing. The slurry for the positive electrode was prepared by mixing  $\text{LiFePO}_4/\text{C}$ , conductive carbon black, and polyvinylidene fluoride (PVdF) at a weight ratio of 75:15:10 with an N-methyl-2-pyrrolidone (NMP) solution. The prepared slurry was loaded into the metal foam uniformly, and the resultant electrode was dried and then pressed. Finally, the pressed electrode was annealed under a nitrogen atmosphere at 140  $^\circ\text{C}$  for half a day.

The cells were assembled in a dry glove box filled with pure argon gas, and each positive electrode was prepared with a lithium ribbon negative electrode, and these were placed into a glass tube ( $\phi$  28 mm) containing 1M  $\text{LiPF}_6$  electrolyte in ethylene carbonate (EC): diethyl carbonate (DEC) (1:1 v/v). No distance

was created between the positive electrode surface and the lithium ribbon surface using a separator. The size of metal foam was 1 cm by 2 cm and only half area was loaded with the active material and the other area was used for connecting with the line of battery cyclers system. The charge-discharge performance was evaluated using a constant current density with a voltage range of 2.5–4.0 V, and the cyclic voltammetric (CV) curves were measured at a scan speed of 0.1 mV s<sup>-1</sup> with a potential range of 2.0–4.3 V. Both the charge-discharge test and the cyclic voltammetric analysis were evaluated using a WBCS3000 battery cyclers system at room temperature. The AC impedance was analyzed using two electrode system after the cell discharged completely at 0.1 C-rate. The frequency range was from 10<sup>5</sup> to 0.01 Hz with a signal of 5 mV amplitude by using an electrochemical analyzer (Model CHI608A).

## C Results and Discussion

The morphology of the NiCrAl alloy foams and the electrodes using different cell size of metal foams was observed using a scanning electron microscope (SEM, JEOL JSM-6360). As shown in Fig. 1(A-C), a three dimensional framework structure can be observed and each cell consists of several pores. Obviously, the average pore size increases with the increase of the cell size. (In previous study, the cell size was considered as pore size.<sup>9</sup>) For the 800 and 1200 μm cell size of metal foams, the thickness was further reduced via mechanical polishing as the same as the cell size otherwise the electrodes would be too thick for commercial application. However, for the 450 μm cell size of the metal foam, in order to obtain thick electrode, the thickness was reduced to of around 700 μm which was one and a half times of the cell size. After manufacturing the electrodes using the above metal foams, each thickness of electrodes is 330, 430 and 540 μm respectively which are much thicker comparing with the commercial Li-ion battery electrodes.<sup>8</sup> And the amount of active material in each cell is 32.5, 46.5 and 56.3 mg cm<sup>-2</sup> respectively. As shown in the SEM images of the electrode surface and the cross-section [Fig. 1(a)-(c)], the average distance between the active material in the centre of cell and the metal frame increases with the increase of cell size of metal foam. It indicates that the capacity and the rate performance of cell are related with the cell size of metal foam current collector and it will be discussed further during the analysis of the electrochemical performance in the following section.

As shown in Fig. 2(a), the cell capacity exhibits higher at a lower current density in the case of larger cell size of metal foam because the mass loading of the active material is much higher for the larger cell size of metal foam; for example, each capacity of cell using 450, 800, 1200 μm cell size of metal foams is 5.1, 7.2 and 8.8 mA h cm<sup>-2</sup> respectively at 1 mA cm<sup>-2</sup>. It should be noted that there is almost no difference in specific capacity at lower current rate which is close to theoretical capacity. However, the cell capacity decreases much more for the cell using larger cell size of metal foam especially for the 1200 μm at higher current density. The capacity of cell using 1200 μm cell size of metal foam is not largest any more when the current density is more than 3 mA cm<sup>-2</sup> and there is almost no big difference in the capacity comparing with the cell using 450 μm cell size of metal foam when the current density is more than 5 mA cm<sup>-2</sup>.

Additionally, the coulombic efficiency of cell using 1200 μm cell size of metal foam is much worse than in the case of the smaller cell size of metal foam in the range of 2–6 mA cm<sup>-2</sup>. The current rate performance of the cells was also evaluated as shown in Fig. 2(b). In lower current rate, there is almost no difference in specific capacity for the cells regardless of cell size of metal foams because there is no difference in diffusion limitation of Li-ion. However, in higher current rate, the diffusion limitation causes more for the thicker electrode. Additionally, the charge transfer ability decreases because the triple contact area per active material mass is much smaller and the average distance between the metal frame and the active material particles is much longer for the cell using the larger cell size of metal foam. According to the results, the cell using 1200 μm cell size of metal foam shows relatively poor rate performance comparing with the cells using 450 and 800 μm cell size of metal foams. For instance, at 1.0 C rate, the specific capacity is only 40 mA h g<sup>-1</sup> for the cell using 1200 μm cell size of metal foam, while it is 80 and 100 mA h g<sup>-1</sup> respectively for the cell using 450 and 800 μm cell size of metal foams.

As shown in Fig. 3(a), there is no difference in power performance in plateau region for the cells using the different cell size of metal foam current collectors since the over-potential is almost the same in that region at lower current density (2 mA cm<sup>-2</sup>). However, at higher current density, for example at 11 mA cm<sup>-2</sup> as shown in Fig. 3(b), the over-potential of cell using 1200 μm cell size of metal foam increases much faster comparing with the cells using the smaller cell size of metal foams because of the diffusion limitation of Li-ion and the higher charge transfer resistance. As shown in Fig. 4, there is no significant difference in bulk resistance for the cells. However, the charge transfer resistance difference between the cells using 450 and 800 μm cell size of metal foams is 1.5 Ω cm<sup>2</sup> and it is 8 Ω cm<sup>2</sup> between the cells using 450 and 1200 μm cell size of metal foams. Additionally, the slope of straight line scanned at lower frequencies which has relation with diffusion limitation is much lower for the 1200 μm cell than in the case of the smaller cell size of metal foams. When the impedance is calculated using a unit of "Ω cm<sup>2</sup>", both the redox area and electronic conductivity of electrode should be considered. (The electrode density is controlled very carefully during the calendaring process to avoid the effect of electrode density on the electronic conductivity. The electrode density is of around 1.35 g cm<sup>-3</sup> for the electrodes and the calculation method can be found in previous study.<sup>9</sup>) For the thick electrode, the redox area is much larger due to the higher mass loading of active material that can result in lower impedance. (The redox area of electrode equals to the total junction area between active material particles and electrolyte in the case of lower current rate and the effective redox area decreases in the case of higher current rate due to the diffusion limitation of Li-ion.) However, the lower electronic conductivity can result in higher impedance due to the increase of cell size of metal foam. So it is possible that there is no significant difference in impedance for the cells using 450 and 800 μm cell size of metal foams. The equivalent circuit was obtained by fitting the impedance spectra as shown in the inset of Fig. 4. Yao et al. also reported the same result by using Ni-Cr alloy foam current collector.<sup>24</sup> R<sub>b</sub>, R<sub>CT</sub>, Z<sub>w</sub>, C<sub>dl</sub> represent the ohmic resistance,

charge transfer resistance, the Warburg impedance, and the capacitance of double layer, respectively. Although the mass loading of the active material is the largest for the 1200  $\mu\text{m}$  cell size of metal foam, the deterioration of capacity and the voltage drop in plateau region are relatively much more because of the higher charge transfer resistance and diffusion limitation of Li-ion. If the cell performance is evaluated in current rate, obviously, the rate performance is better for the cell using smaller cell size of metal foam as shown in Fig. 3(c) and (d).

The electrochemical performance of cells was also evaluated by cyclic voltammetric analysis. As shown in Fig. 5, the redox peak of cell using smaller cell size of metal foam occurs earlier and the specific current of peak is higher; however, it should be noted that the specific current of peak is much smaller and the shape of peak is much broader for the cell using 1200  $\mu\text{m}$  cell size of metal foam. Due to the lower charge transfer ability, the Li concentration gradient is much lower at the electrode surface for the 1200  $\mu\text{m}$  cell, so the specific diffusion flux of Li is also much lower according to the Fick's 1<sup>st</sup> law. Additionally, the higher diffusion limitation of Li ion occurs because of the thick thickness of electrode. As shown in the curves, the difference in reduction current of peak between the 450 and 800  $\mu\text{m}$  cells is 18  $\text{mA g}^{-1}$ , whereas the difference is as much as 73  $\text{mA g}^{-1}$  between the 450 and 1200  $\mu\text{m}$  cells. It indicates that much higher voltage difference is needed between the applied voltage and open circuit voltage (OCV) to insert or extract the same amount of Li for the large cell size of electrode.

The cycle-life performance of cells using the different cell size of metal foams was evaluated at 0.3 C as shown in Fig. 6. After 50 cycles, the cell using smaller cell size of metal foam exhibits slightly better cycle stability; however, each cell capacity faded less than 10 % of their capacity. The good cycle-life performance indicates that the tolerance of NiCrAl foam is sufficiently high enough. Additionally, the high tolerance of NiCrAl foam was confirmed by CV measurement and the result shows that there is no anodic peak with a potential range of 2.0-5.0 V at a scan speed of 0.1  $\text{mV s}^{-1}$ . The tolerance is much higher than in the case of the Ni-35wt. % Cr alloy foam reported by Yao et al.<sup>24</sup> and less content of Cr is needed by the addition of Al element in our study. Considering the cell capacity and rate performance, the cell size of metal foam between 450 and 800  $\mu\text{m}$  can be considered for commercial application especially for the large scale energy storage. However, the main issue in this study is that the metal foams manufactured for emission control of vehicle engines are much heavier than the commercial foil type current collectors. To solve the issue, the thickness of Ni electroplated on the polyurethane and the weight ratio of Ni, Cr and Al in metal foam should be controlled effectively to reduce the weight as much as possible for Li-ion batteries. Additionally, the specific surface area and the electric resistance of metal foam should be also considered. Currently, the electrode using a foil type usually is packed by rolling process, especially for the portable devices. However, when the electrode surface is large, some of the commercial Li-ion battery electrodes are packed via layered stacking. In our case, the thick electrode using metal foam should be packed by layered stacking to avoid the bending issue.

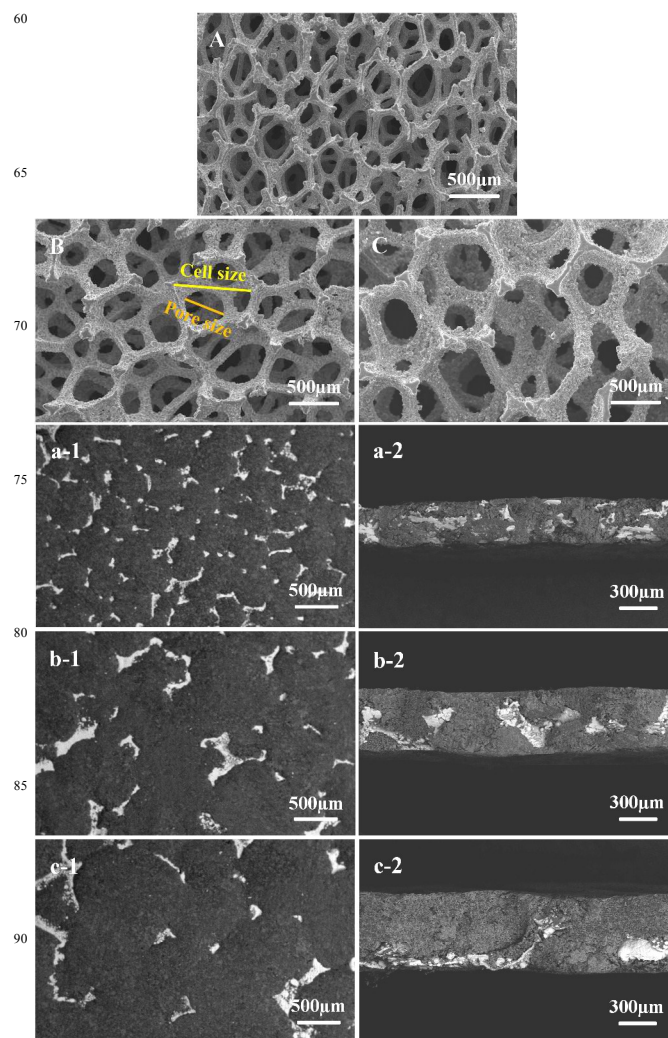
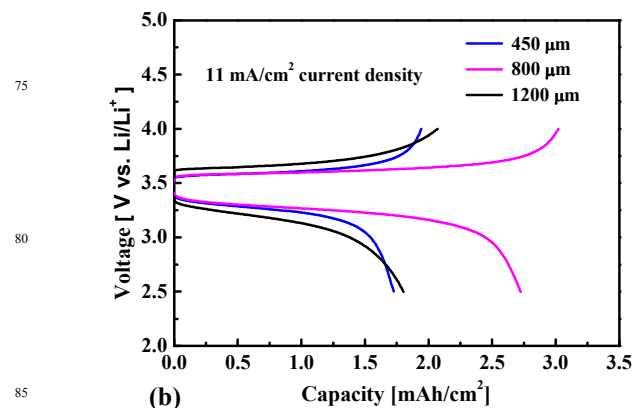
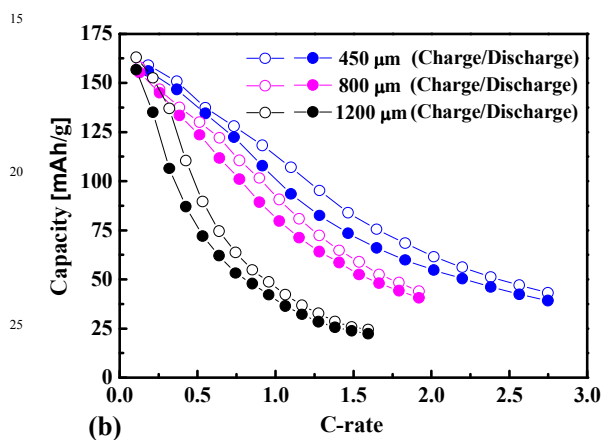
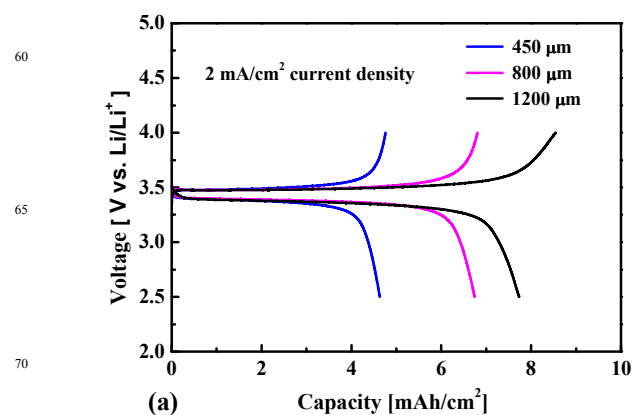
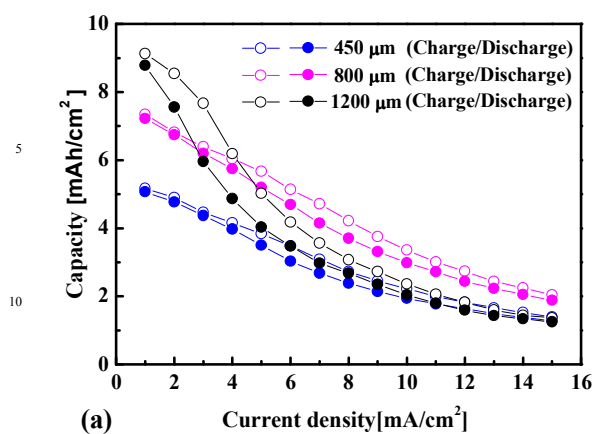
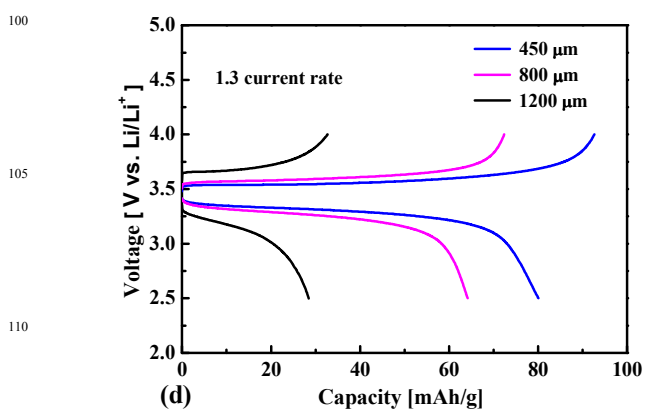
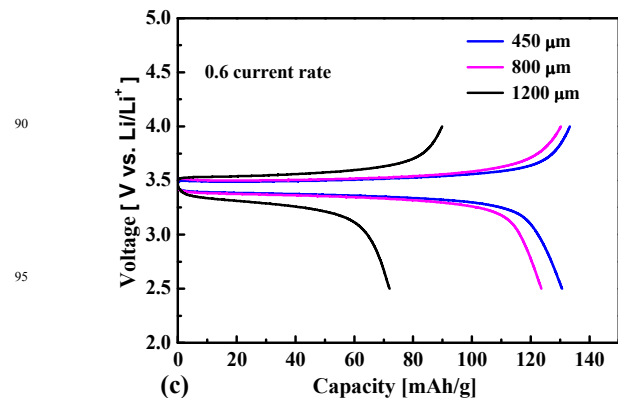


Fig. 1 SEM images of metal foams and the surface and cross-section of electrodes. 450  $\mu\text{m}$  cell size (A, a-1, a-2), 800  $\mu\text{m}$  cell size (B, b-1, b-2), 1200  $\mu\text{m}$  cell size (C, c-1, c-2).



30 Fig. 2 Variation in the cell capacity and specific capacity with an increase in current density (a) and C-rate (b) respectively for the cells using different cell size of metal foams.



115 Fig. 3 Comparison of the charge-discharge curves at  $2 \text{ mA cm}^{-2}$  (a),  $11 \text{ mA cm}^{-2}$  (b), 0.6 C-rate (c) and 1.3 C-rate (d) for the cells using different cell size of metal foams.

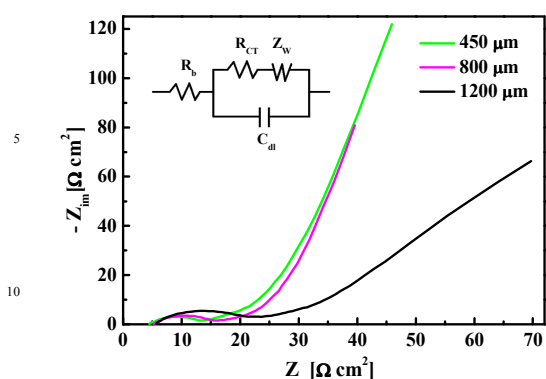


Fig. 4 Comparison of the AC impedance curves for the cells using different cell size of metal foams.

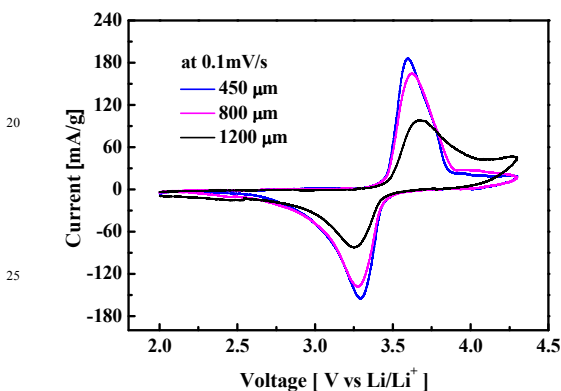


Fig. 5 Comparison of the cyclic voltammetric curves for the cells using different cell size of metal foams.

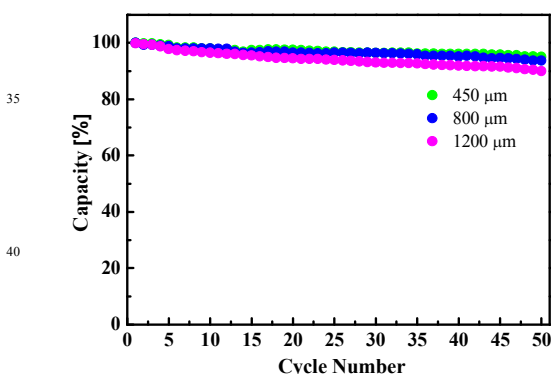


Fig. 6 Comparison of the cycle-life performance for the cells using different cell size of metal foams.

## Conclusions

Ultra-thick Li-ion battery electrodes are prepared successfully in the range of 300-600  $\mu\text{m}$  by using different cell size of metal foam current collectors. Although the electrode using 1200  $\mu\text{m}$  cell size of metal foam possesses the highest mass loading of active material, the cell capacity becomes lower than the cell using 800  $\mu\text{m}$  cell size of metal foam when the current density is higher than 3  $\text{mA cm}^{-2}$ . The AC impedance analysis shows that there is almost no difference in bulk resistance for the cells; however higher charge transfer resistance and the lower slope of straight line scanned at lower frequencies are observed for the

cell using 1200  $\mu\text{m}$  cell size of metal foam. Considering both of the cell capacity and rate performance, the cell size of metal foam between 450 and 800  $\mu\text{m}$  is promised for large scale energy storage.

## Acknowledgement

This research was supported by Research Institute of Advanced Materials and Eui-San Research Center at Seoul National University. The authors acknowledge the support of metal foam from Alantum Corporation and lithium iron phosphate from Hanwha Chemical Corporation.

## Notes and references

- J. M. Tarascon and M. Armand, *Nature*, 2001, **414**, 359-367.
- K. Kang, Y. S. Meng, J. Breger, C. P. Grey and G. Ceder, *Science*, 2006, **311**, 977-980.
- B. L. Ellis, K. T. Lee and L. F. Nazar, *Chemistry of Materials*, 2010, **22**, 691-714.
- G. F. Yang, J. S. Song, H. Y. Kim and S. K. Joo, *Japanese Journal of Applied Physics*, 2013, **52**, 10MB13.
- V. Etacheri, R. Marom, R. Elazari, G. Salitra and D. Aurbach, *Energy & Environmental Science*, 2011, **4**, 3243-3262.
- Y. Li, J. Song and J. Yang, *Renewable and Sustainable Energy Reviews*, 2014, **37**, 627-633.
- S. B. Chikkannanavar, D. M. Bernardi and L. Liu, *Journal of Power Sources*, 2014, **248**, 91-100.
- J. S. Wang, P. Liu, E. Sherman, M. Verbrugge and H. Tataria, *Journal of Power Sources*, 2011, **196**, 8714-8718.
- G. F. Yang, K. Y. Song and S. K. Joo, *J. Mater. Chem. A*, 2014, **2**, 19648-19652.
- H. Liu, Q. Cao, L. J. Fu, C. Li, Y. P. Wu and H. Q. Wu, *Electrochemistry Communications*, 2006, **8**, 1553-1557.
- T. E. Ashton, J. V. Laveda, D. A. MacLaren, P. J. Baker, A. Porch, M. O. Jones and S. A. Corr, *Journal of Materials Chemistry A*, 2014, **2**, 6238.
- W.-B. Luo, S.-L. Chou, Y.-C. Zhai and H.-K. Liu, *Journal of Materials Chemistry A*, 2014, **2**, 4927.
- Y. Ding, Y. Jiang, F. Xu, J. Yin, H. Ren, Q. Zhuo, Z. Long and P. Zhang, *Electrochemistry Communications*, 2010, **12**, 10-13.
- Z. Chen and J. R. Dahn, *Journal of The Electrochemical Society*, 2002, **149**, A1184.
- F. Gao, Z. Tang and J. Xue, *Electrochimica Acta*, 2007, **53**, 1939-1944.
- K. Kim, J. H. Jeong, I.-J. Kim and H.-S. Kim, *Journal of Power Sources*, 2007, **167**, 524-528.
- D. Jugović, M. Mitrić, M. Kuzmanović, N. Cvjetičanin, S. Marković, S. Škapin and D. Uskoković, *Powder Technology*, 2012, **219**, 128-134.
- Y. Zhang, L. Chen, J. Ou, J. Wang, B. Zheng, H. Yuan, Y. Guo and D. Xiao, *Journal of Materials Chemistry A*, 2013, **1**, 7933.
- Z.-X. Chi, W. Zhang, F.-Q. Cheng, J.-T. Chen, A.-M. Cao and L.-J. Wan, *RSC Advances*, 2014, **4**, 7795.
- Z. Bi, X. Zhang, W. He, D. Min and W. Zhang, *RSC Advances*, 2013, **3**, 19744.
- C. Jin, X. Zhang, W. He, Y. Wang, H. Li, Z. Wang and Z. Bi, *RSC Advances*, 2014, **4**, 15332.
- Y. Jiang, S. Liao, Z. Liu, G. Xiao, Q. Liu and H. Song, *Journal of Materials Chemistry A*, 2013, **1**, 4546.
- P. Yan, L. Lu, X.-m. Liu, Y. Cao, Z.-p. Zhang, H. Yang and X.-d. Shen, *Journal of Materials Chemistry A*, 2013, **1**, 10429.
- M. Yao, K. Okuno, T. Iwaki, M. Kato, S. Tanase, K. Emura and T. Sakai, *Journal of Power Sources*, 2007, **173**, 545-549.
- H. Zheng, J. Li, X. Song, G. Liu and V. S. Battaglia, *Electrochimica Acta*, 2012, **71**, 258-265.
- S. Yu, S. Kim, T. Y. Kim, J. H. Nam and W. I. Cho, *Journal of Applied Electrochemistry*, 2012, **43**, 253-262.