

Journal of Materials Chemistry C

Accepted Manuscript



This is an *Accepted Manuscript*, which has been through the Royal Society of Chemistry peer review process and has been accepted for publication.

Accepted Manuscripts are published online shortly after acceptance, before technical editing, formatting and proof reading. Using this free service, authors can make their results available to the community, in citable form, before we publish the edited article. We will replace this *Accepted Manuscript* with the edited and formatted *Advance Article* as soon as it is available.

You can find more information about *Accepted Manuscripts* in the [Information for Authors](#).

Please note that technical editing may introduce minor changes to the text and/or graphics, which may alter content. The journal's standard [Terms & Conditions](#) and the [Ethical guidelines](#) still apply. In no event shall the Royal Society of Chemistry be held responsible for any errors or omissions in this *Accepted Manuscript* or any consequences arising from the use of any information it contains.

APPLICATION

Chiral-nematic liquid crystals as one dimensional photonic materials in optical sensors

Cite this: DOI: 10.1039/x0xx00000x

D.J. Mulder,^a A.P.H.J. Schenning^{a,*} and C.W.M. Bastiaansen^{a,b,*}Received 00th January 2012,
Accepted 00th January 2012

DOI: 10.1039/x0xx00000x

www.rsc.org/

Current developments in the field of thermotropic chiral-nematic liquid crystals as sensors are discussed. These one dimensional photonic materials are based either on low molecular weight liquid crystals and chiral-nematic polymeric networks. For both low molecular weight LCs as polymer networks, real-time and time integrating sensors have been realized. The response mechanism is either based on change of helical twisting power of the dopant upon exposure to an analyte, or due to physical swelling, with a loss or gain of order in the liquid crystalline upon uptake of the analyte, causing the pitch to change. Sensors have been reported that respond to organic and water vapour, amines, water CO₂, O₂, metal ions, pH, strain and temperature.

Introduction

Stimuli-responsive photonic crystals have received a lot of interest in the last decades for possible applications in the field of optical sensors.¹ The periodic alternation of the refractive index in these materials leads to reflection of light which can be tuned by external stimuli. So far a number of fabrication methods have been reported to prepare responsive one, two and three dimensional (1D, 2D and 3D) photonic crystals.¹ An appealing processing method is based on the self-assembly of liquid crystals. In a simple processing step, such as spin-coating 1D photonic crystals can be prepared using so-called chiral nematic liquid crystals.

The liquid crystalline phase can be considered as a state of matter between the liquid- and solid phase. Thermotropic liquid crystals are anisotropic partially ordered fluids which can exhibit different mesophases. The nematic phase has the lowest order of all mesophases and exhibits only directional order of the rod-like molecules. This directional order is described by the director **n**. When a small amount of a chiral compound (dopant) is added, helical twisting of the molecular director **n** can be induced leading to a chiral nematic or cholesteric liquid crystalline (CLC) phase (Figure 1). The ability of a chiral dopant to induce a twist in the nematic phase is quantified by the helical twisting power (HTP). If the HTP of a chiral dopant in a certain mixture is known, the pitch *P*, the length of the helical axis over a 360° rotation of the rod-like molecules, is calculated by $P = 1/(\beta \times ee \times [C])$, where β is the HTP, *ee* is

the enantiomeric excess, and [*C*] the concentration of the chiral dopant. Often, the cholesteric structure is drawn as a stack of layers of molecules with an orientational order, rotating each layer with a constant angle with respect to its neighbouring layer. This very schematic representation of layers in a chiral-nematic structure has a limited physical reality.¹ Each layer acts as a uniaxial anisotropic plane with the slow (extraordinary) axis parallel to the rod-like molecules and in most cases the fast (ordinary) axis perpendicular to the molecules. Throughout this 1D photonic material the two axes twist continuously through the layer. When light travels through the medium in the Bragg regime, incident light will be reflected (Figure 1B and C).

The colour of the reflected light depends on the helical pitch *P* in following way: $\lambda_b = \bar{n} \times P \times \cos \theta$, where λ_b is the Bragg reflection wavelength (or selective reflection band (SRB)), \bar{n} is the average refractive index ($\bar{n} = (n_o + n_e)/2$), where *n_o* and *n_e* are the ordinary and the extraordinary refractive indices, respectively, *P* is the helical pitch and θ the incidence angle of the light (Figure 1). When the pitch length is in the regime of the visible light, the system will reflect visible light.

With the use of reactive mesogens, responsive chiral nematic polymer networks can be prepared with good mechanical strength.² Reactive mesogens can, for example, be provided with (meth-)acrylate groups and, in presence of a photoinitiator, be photo-polymerized using UV-irradiation. In these materials the helical structure and the helical rotation is frozen in the polymeric network.

Cholesteric liquid crystals are appealing materials for the use as optical sensors, since their ability to form a one dimensional photonic structure by self-assembly. Cholesteric liquid crystals exhibit a wave-length and polarization selective reflection due to their periodic helical structure.² The length of this helical pitch can be influenced by various external stimuli resulting in a change of the selective reflection wavelength (Figure 2).

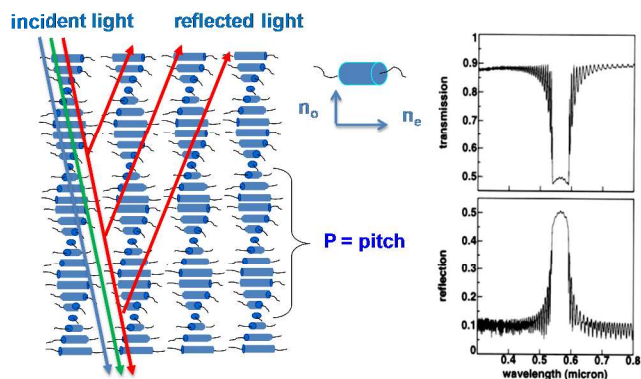


Figure 1, Left hand side, the reflection of light by a chiral nematic liquid crystal. The material reflects only circular polarized light with the same pitch and handedness as the helical pitch and handedness of its helical superstructure. The other handedness is transmitted through the material. Right hand side, typical transmission and reflection spectra of a chiral nematic reflector.

This makes it possible to use the cholesteric liquid crystals as optical sensors where changes can be observed with the naked eye. The stimulus, i.e., the analyte can react with the chiral dopant thereby changing by its HTP and therefore the reflection colour of the system. The reflection colour can also change by swelling/shrinkage or a loss of the order in the LC mixture due to adsorption of the analyte by the photonic material.

The aim of this review is to present the recent developments in the field of thermotropic cholesteric low molecular weight liquid crystal (CLC) and polymeric CLC networks as optical sensors. Over the last decades, responsive materials based on CLCs have also drawn their interest in, for instance, displays applications. In particular, the dynamic reflection colour change of CLCs to temperature, light and electrical stimuli has been explored. The recent developments in this field are beyond the scope of this article and has been presented in an excellent review by White *et al.*³ For the use of other liquid crystalline phase, lyotropic systems⁴⁻⁷ and photonic crystals as optical sensors the reader is referred to recent review papers.^{1,8-10}

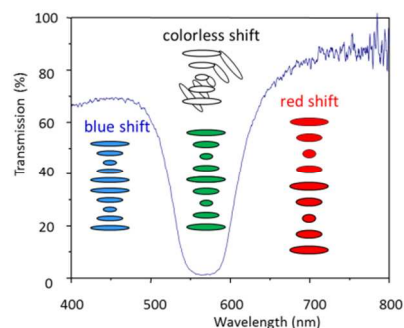


Figure 2, Possible changes of the green reflection band of a CLC polymer sensor upon responding to an analyte. Shrinkage of the polymer network leads to a blue shift, expansion to a red shift while a loss of molecular order leads to a disappearance of the green reflection band.

Sensors based on low molecular weight CLC mixtures

Organic Vapour Sensors

CLCs can act as optical vapour sensors by adsorption of solvent vapour resulting in a change in the pitch. The change in pitch can be explained by the change in the twisting angle between the molecules or stretching the molecule along the helical main director.

In 1994 Dickert *et al.* investigated a mixture of CLC sensors that are able to sense various organic vapour molecules.¹¹ The mixture consisted of cholesteryl chloride (CC), cholesteryl oleylcarbonate (CO), and cholesteryl nonaoate (CN). Upon exposure to these vapours a red-shift is observed. This shift is caused by the penetration of the solvent molecules into the film, leading to a distortion of the anisotropic phase resulting in a swelling of the helical pitch. The authors pointed out that in order to obtain reliable results from a CLC sensor environmental influences such as temperature or relative humidity have to be minimized. The use of intelligent data interpretation was suggested to filter out the cross sensitivity signals caused by these environmental influences in which the temperature and relative humidity are considered as additional analytes. With this intelligent data interpretation method, a linear response and a low detection limit (<10 ppm) was obtained. The selectivity could be tuned by using different ratios of the LCs giving different response to different.

Winterbottom *et al.* explored a similar system involving a binary CLC mixture (Figure 3).¹² The sensor was exposed to ethanol, acetone, benzene, pyridine, and hexane vapour and a reversible red-shift response of the SRB was observed within 3 minutes of exposure. Unfortunately, the stability of the CLC films was poor. Crystallization of the components was observed after 200 minutes after preparation of the films. The authors stabilized the CLC by immobilizing it in a polymer matrix. As a polymer binder, 0.1-0.5 % PVC or silicon rubber was used. The lifetime of the sensor was increased and no crystallization was observed under ambient conditions. The authors tested the polymer stabilized CLC sensors by exposing them to acetone vapour. The response time of the polymer stabilized CLCs was found to be dependent on the concentration polymer.

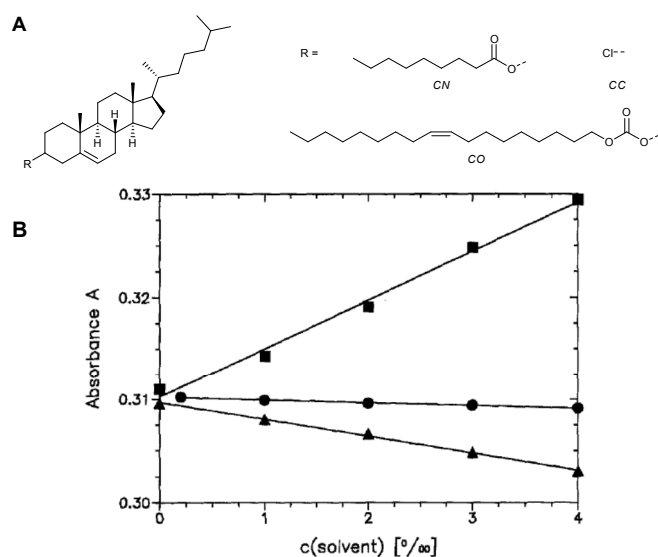


Figure 3, A) Chemical structures of cholesterol derivatives used in the CLC sensors to sense organic solvent vapour in the work of Dickert *et al.*, and B) the sensor characteristics of a cholesteric liquid crystal absorbance A at 398 nm versus solvent vapour concentration in air at 20°C (CC:CN:CO=3:16:12-weight ratio) (● = methanol, ■ = chloroform, ▲ = tetrahydrofuran). Adapted from Dickert *et al.*¹¹ Reproduced with kind permission from Springer Science and Business Media.

Mujahid *et al.* prepared a CLC sensor based on chiral biphenyls (Licritherm TM 1013, Merck AG).¹³ CLC films were prepared and exposed to ethanol, tetrahydrofuran (THF), chloroform, and tetrachloroethylene vapour and a blue-shift of the SRB was observed. A linear correlation was found between the shift of the absorbance (ΔA) and the molecular mass of the solvents examined (Figure 4A). The authors also investigated the lifetime of the CLC sensor films. They prepared a cross-linked polystyrene matrix in which the CLC was dispersed. Three polymer films were prepared with 5 %, 10 %, and 20 % CLC. The 5 % CLC film showed clear discrimination between THF and ethanol and the selectivity for the polymer stabilized CLC sensors was higher than for the pure CLC mixture. The response of the stabilized film shows linear behaviour as a function of the concentration of organic vapour present (Figure 4B). Furthermore, films based 5 % CLC and polystyrene showed good mechanical stability.

Chang *et al.* studied a CLC organic vapour sensor based on the commercial nematic LC mixture E7 (Merck).¹⁴ Two chiral dopants were used to induce the cholesteric twist, S1011 (17 wt %, Merck) and DBD (2 wt %, WeiFlex) (Figure 5A). Films with a thickness of 20 μm were prepared exhibiting a SRB that red-shifted upon exposure to acetone and toluene vapours. The initial colour of the film was cyan and the final state was transparent. Polarized light microscopy and UV-Vis spectroscopy revealed that when solvent vapour diffused in the CLC, a phase transition occurred to the isotropic phase resulting a transparent film. Acetone showed a stronger and faster response than toluene due to a favourable interaction with the cyano groups in the CLC. Furthermore, the authors showed

that the diffusion occurred by a Fickian type II diffusion model (sigmoidal) by fitting the time dependent SRB shift. In a later paper the authors demonstrated that by using carbon nanotubes (CNTs) the dynamic range of the sensor can be enhanced by combining the optical readout with an electric resistance measurement.¹⁵

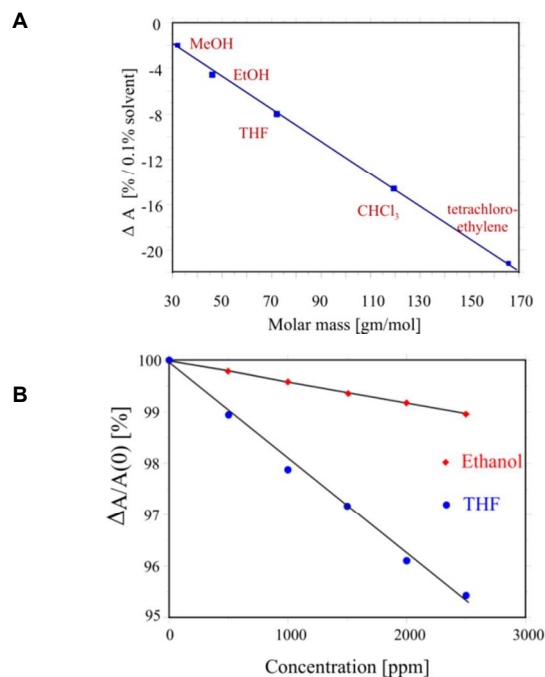


Figure 4, A) Optical sensor response of CLCs towards molar masses of different analyte vapours. B) Optical response of CLCs embedded in imprinted polymer for THF and EtOH showing enhanced selectivity for imprinted THF than EtOH. Adapted from Mujahid *et al.*¹³

A hybrid CLC sensor containing CNTs (1,5 %) was prepared and upon exposure of acetone a clear red-shift was observed up to a vapour concentration of 140 ppm. Acetone diffuses into the CLC film, causing a swelling of the pitch and ultimately a total disruption of the liquid crystal assembly. Polarized light microscopy revealed that the Grand Jean texture of the CLC phase transforms to a multi-domain texture in a branching motion. The authors explain that during this transformation the CNTs branch out and form a conducting network, resulting in a significant change in conductive properties. Initially the film shows a high electric resistance of 3.09 M Ω . During the branching the resistance decrease to 0.72 M Ω . This branching motion appears in the range of 160–550 ppm giving the sensor a high sensitivity in this range (Figure 5B).

Carbon Dioxide Sensor

With the use of responsive dopants, a selective and large response of the helical pitch to analytes can be achieved in CLC sensors. The concept is based on the change of HTP of the chiral dopant when the dopant reacts selectively with the analyte molecules.^{16,17} In the research of Han *et al.* two sensors were investigated, one that can monitor CO₂ real time (reversible) and second one that can record oxygen exposure over time (irreversible). The carbon dioxide sensor was

prepared by using an optically pure diamine with a TADDOL derivative (Figure 6A) and as a chiral dopant in the nematic LC mixture E7.¹⁸ The diamines react with CO₂ forming carbamates (Figure 6B).

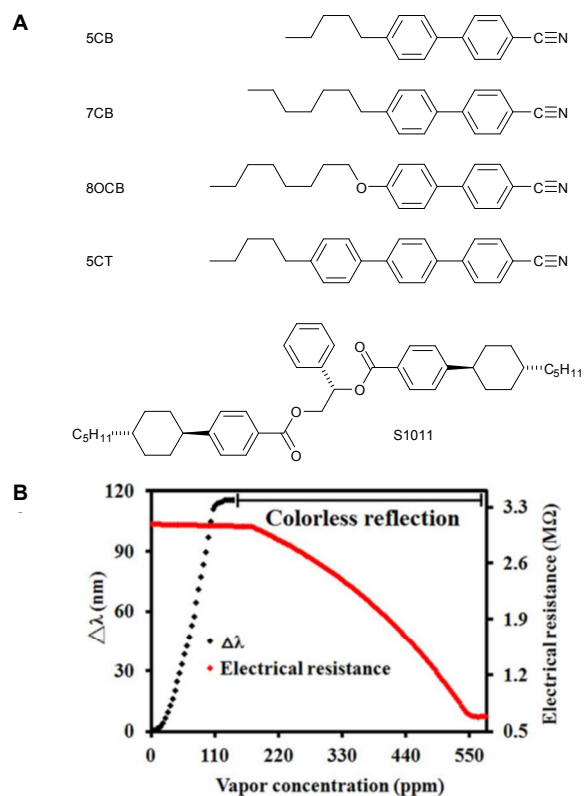


Figure 5, Structures of the components present in the nematic mixture E7 (5CB, 7CB, 8OCB, and 5CT) and the chiral dopant (S1011) used in the work of Chang *et al.*¹⁴ and the change in reflection wavelength and electrical resistance as a function of vapour concentration. Reprinted with permission from C.-K. Chang, S.-W. Chiu, H.-L. Kuo, and K.-T. Tang, *Appl. Phys. Lett.*, 2012, **100**, 043501 Copyright 2014, AIP Publishing LLC.

The pure chiral diamine has a low HTP in E7. Therefore, the authors prepared 1:1 hydrogen bonded complexes of the diamine with a TADDOL derivative (Figure 7(a)) which has a high twisting power ($\beta = +250 \mu\text{m}^{-1}$). Films containing 1.6 % diamine-TADDOL complex in E7 were prepared. The films prepared with (R, R)-amine-TADDOL exhibit a SRB at 637 nm, which corresponds to a red colour reflection. When the films were exposed to CO₂ a blue-shift occurred, yielding a green film (SRB = 495 nm) that is clearly visible in Figure 6C. This indicated a shorter pitch due to a higher HTP of the dopant. The response of the CLC sensor was fast: the colour of the film shifted within 10 seconds. Kinetic studies showed that the response of the sensor was not diffusion controlled but predominantly chemical reaction controlled, following a rate-limiting pseudo-first-order reaction.

Oxygen and Amine Sensor

An oxygen sensor based on the oxidation of thiols by molecular oxygen to disulfides has also been prepared.¹⁷ A chiral binaphthalene dithiol was used as dopant which in the presence

of a small amount of catalyst (*e.g.* triethylamine (TEA)) can be oxidized to the disulfide dopant. The open dithiol derivative exhibits a lower HTP ($\beta = 13 \mu\text{m}^{-1}$) than the disulfide bridged derivative ($\beta = 65 \mu\text{m}^{-1}$). Contrarily, due to the low solubility

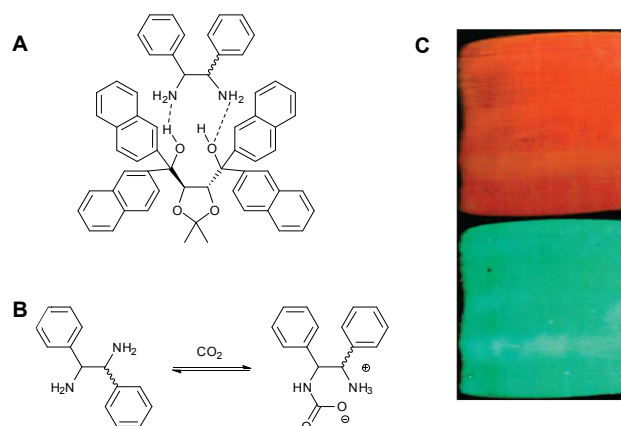


Figure 6, A) Structure of 1:1 Amine-(R,R)-TADDOL derivative complex, B) the carbamate formation of the amine compound, and C) images of the CLC film before (top) and after (bottom) exposure to CO₂ for 1h. Adapted with permission from Y. Han, K. Pacheco, C. W. M. Bastiaansen, D. J. Broer, and R. P. Sijbesma¹⁶. Copyright 2014 American Chemical Society.

and precipitation of the disulfide bridged species the SRB changed in the opposite direction (Figure 7).

The initial green colour (SRB = 542 nm) changed to orange (SRB = 600 nm). Control experiments showed that when the film was exposed to air without TEA, or TEA vapour in a nitrogen atmosphere, no colour change occurred. This latest result reveals the potential to use the sensor for volatile amines in an oxygen rich atmosphere which could be interesting for the detection of volatile amines that produced by the bacterial decomposition of fish. This detection can be of interest in, for instance, food packaging.¹⁹

Humidity sensor

Saha *et al.* prepared a (irreversible) humidity sensor based on bis-(binaphthylenedioxy)silane (Figure 8) as a reactive chiral dopant in E7.¹⁷ This chiral compound is very sensitive to hydrolysis. Upon exposure to humid air the silane compound hydrolyses, yielding two binaphthol compounds.

The silane compound and the hydrolysed product have a similar helical twisting power, $-34.9 \mu\text{m}^{-1}$ versus $-31.7 \mu\text{m}^{-1}$, respectively. Nevertheless, a significant change of the reflection band was observed when a film containing 10.1 % silane dopant in E7 was exposed to humid air.

The SRB of the initial blue film red-shifted to orange-red within a few minutes and the film turned colourless within an hour. The binaphthol products are poorly soluble in the E7 matrix, resulting in precipitation. The rate of the SRB-shift was found to be sensitive to the relative humidity. However, regardless to the relative humidity, a colourless film was obtained after long exposure even to a low relative humidity, indicating good time-analyte integrating properties. The authors showed that the rate at which the SRB-shift occurred was not

dependent on the diffusion rate of the analyte since the rate of the SRB-shift was the same for samples with different thicknesses.

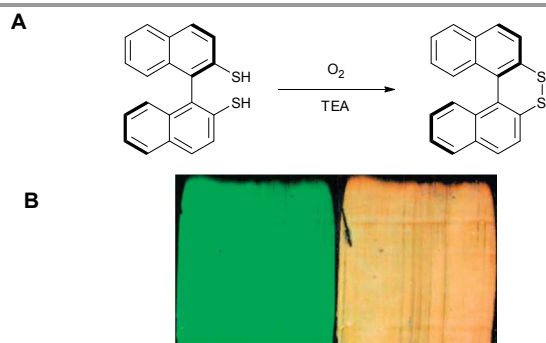


Figure 7, A) Oxidation of the binaphthalene dithiol to disulfide bridged species by O_2 . $\beta = 13 \mu m^{-1}$ for the dithiol species, and $\beta = 65 \mu m^{-1}$ for the disulfide bridged species, B) images of the CLC film before (left) and after (right) exposure to air for 1 h in the presence of triethylamine. Adapted with permission from Y. Han, K. Pacheco, C. W. M. Bastiaansen, D. J. Broer, and R. P. Sijbesma.¹⁶ Copyright 2014 American Chemical Society.

Sensors based on polymeric CLC networks

pH and Amino Acid Sensors

In 2002 the first CLC polymer pH sensor was reported by Shibaev *et al.*²⁰ A chiral polymer composite with a frozen cholesteric structure was prepared by the photo-polymerization of a hydrogen bonded mesogenic acrylate (AHA) in presence of a cross-linker (DIAB), a hydrogen-bonded chiral dopant (MMA) and a non-reactive hydrogen-bonded mesogen (PCA) (see Figure 9A). The authors prepared various mixtures of the compound with different compositions in which the photo-polymerization was performed in the cholesteric phase. With a concentration of the chiral dopant between 12 % and 23 % the selective reflection band is in the visible spectral region. With high cross-link densities (>35 %) the long term preservation of the helical superstructure after cooling of the sample was

realized. When the polymer film was exposed to basic water the hydrogen bonds were disrupted.

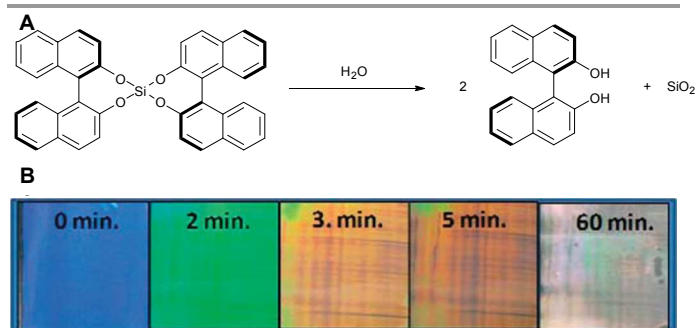


Figure 8, A) The reaction of bis-[binaphthalen-(2,2')-dioxyl]-silan with water to form (R)-(+)-1,1'-bi(2-naphthol) and SiO_2 and B) photographs indicating colour changes upon exposure to air (relative humidity of 75%) of a CLC film of E7 containing 10.1% of bis-[binaphthalen-(2,2')-dioxyl]-silan. Saha *et al.*¹⁷ - Reproduced by permission of The Royal Society of Chemistry

This deprotonation lead to the formation of hygroscopic carboxylate salts. The uptake of water by this salt caused the material the swell and the cholesteric pitch length, and thus the selective reflection band, to change. This effect results in a red shift of the position of the selective reflection band (Figure 9B). In subsequent studies, a slightly altered system was explored in which the sensitivity towards basic amino acids was also considered.^{21–23} This was done by exposing 4 different types of samples to a basic amino acid solutions. The first sample containing no hydrogen bonded moieties did not respond to the basic arginine solution. The second sample containing an inert chiral dopant (ZLI 4572) and a hydrogen bonded polymer matrix did respond very weakly. A shift of 15–20 nm of the SRB was observed. The third sample containing the hydrogen bonded dopant MAA and an inert polymer matrix, thus without AHA, did not change colour. The fourth sample containing the hydrogen bonded chiral dopant and the hydrogen bonded AHA showed a strong response to the amino acid solution.

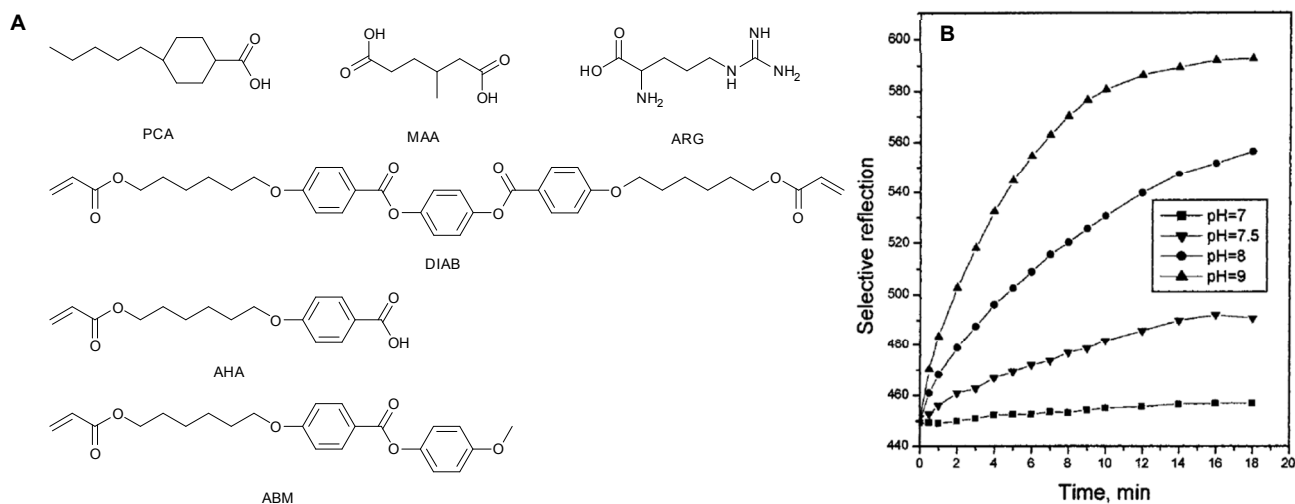


Figure 9, A) Chemical structures of component in the stabilized CLC composite used in the work of Shibaev *et al.*, and B) changes in the selective reflection with time at different pH (right). Reprinted with permission from P. V Shibaev, K. Schaumburg, and V. Plaksin, *Chem. Mater.*, 2002, **14**, 959–961. Copyright 2014 American Chemical.

Furthermore, an increase of AHA in the mixture leads to a more hydrophilic polymer film, a faster response, and greater shift of the SRB. At high concentrations of AHA the quality and stability of the SRB was poor. The wet films did swell physically in thickness by a factor of 1.2–1.8.

Later Chen *et al.* developed a hydrogen bonded CLC network with double sensing properties. The material is sensitive for both pH and temperature over a wide temperature range.²⁴ But contrary to the chiral dopant used by Shibaev *et al.*, this system contains a chiral dopant that only can act as a hydrogen bond acceptor (Figure 10A). Furthermore, the system contains a nematic mixture of liquid crystalline acrylates and an inert chiral liquid crystalline acrylate. In a previous study it was shown that the HTP of hydrogen-bonded chiral dopant changes with increasing temperature.²⁵ This effect was also observed for photo-polymerized samples. A change in SRB was observed from 570 nm (green/yellow) to 611 nm (yellow/red) when the polymer film was heated from 60 °C to 200 °C. During heating the hydrogen-bonds are weakened gradually over a wide

temperature range. This colour change was reversible as when the sample was cooled to 60 °C again a green/yellow film was obtained.

In the pH studies, five samples were placed at different pH solutions and allowed to equilibrate for 5 days (Figure 10B). The colour of the film is changing above pH 7 and at higher pH values the shift of the SRB is greater. The concentration of hydrogen-bonded chiral dopant present in the polymer film influences the rate and the magnitude of the SRB shift (Figure 10C). A higher concentration of the hydrogen bonded assembly leads to a greater shift.

Similarly to the aforementioned investigation of Shibaev *et al.*, the authors observed the disappearance of the signals in FTIR spectra corresponding to hydrogen bonded carboxylic acid and the appearance of the signals that indicate carboxylate salt formation. The breakage of the hydrogen bonds, and the formation of carboxylate groups, leads to a swelling of the helical pitch, and subsequently a red-shift of the selective reflection wavelength.

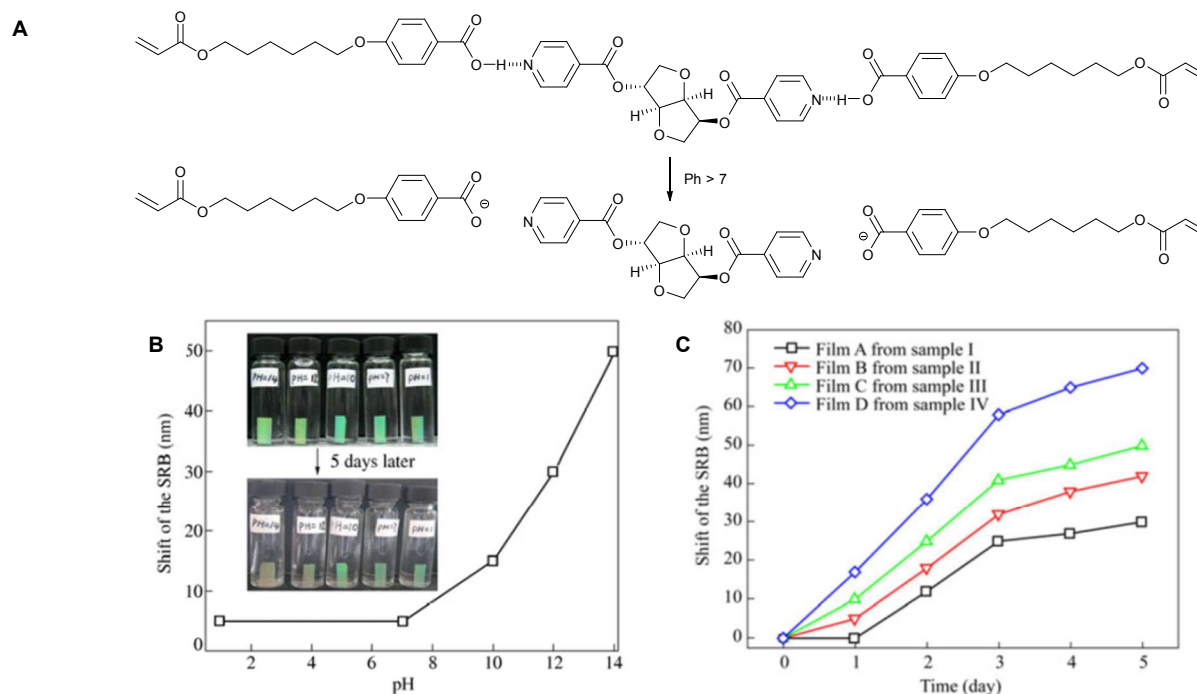


Figure 10, A) Schematic of breaking H-bonds in the cholesteric polymer films, B) shift of the SRB of the film A after treatment in aqueous solutions with different pH values for 5 days (the insets are the corresponding photos of the initiative films and the films after 5 days treatment), and C) SRB shift of films as a function of treating time in aqueous solution with pH = 12 (bottom right). Adapted from Chen *et al.*²⁴ With kind permission from Springer Science and Business Media.

Alcohol Sensor

An alcohol responsive sensor has been developed by Chang *et al.*^{26,27} A nematic polymerizable LC mixture was used containing two mesogens with benzoic acid moieties (Figure 11). Furthermore, the mixture contained a chiral moiety to induce the helical twist. A non-reactive nematic mesogen 5CB (See Figure 5A) was added to the mixture. This non-reactive

mesogen was subsequently removed after the photo-polymerization to obtain a porous CLC network. Interestingly, this porosity leads to a faster response of the sensor since the surface area through which the reagents diffuse was increased. The sensor films were prepared by inkjet printing the cholesteric liquid crystal mixture on rubbed triacetyl cellulose (TAC) foil. After photo-polymerization and the removal of the

porogen, the films were activated by an alkaline solution. The hydrogen bonds between the benzoic acid moieties in the polymer film were broken and sodium salt was formed. This ionic carboxylate groups have a different affinities for different alcohol-water mixtures.

The activated CLC network films were dried and subsequently exposed to solutions of 40 % alcohol in water. A red-shift of the SRB was observed. This shift is caused by the swelling of the film due to the adsorption of the alcohol in the CLC network. A clear distinction could be made between methanol and ethanol. For ethanol-water mixtures the shift of the SRB was larger than for methanol-water mixtures. In an experiment where the authors exposed the CLC networks to various ratios of methanol / ethanol they showed that it is possible to deduce the ratio from the shift of the SRB ($\Delta\lambda$, Figure 11A). The authors explained the difference in the response of methanol and ethanol by comparing their Hildebrand solubility parameters of the solvents with the one of benzoic acid (binding moieties of the sensor interior). The Hildebrand solubility parameters are 29 MPa^{0.5} and 26 MPa^{0.5} for methanol and ethanol, respectively. The value of benzoic acid is 22 MPa^{0.5}. Therefore, the authors suggest that the affinity for ethanol is higher. It was not shown that the correlation between this parameter and the response is valid for other alcohols.

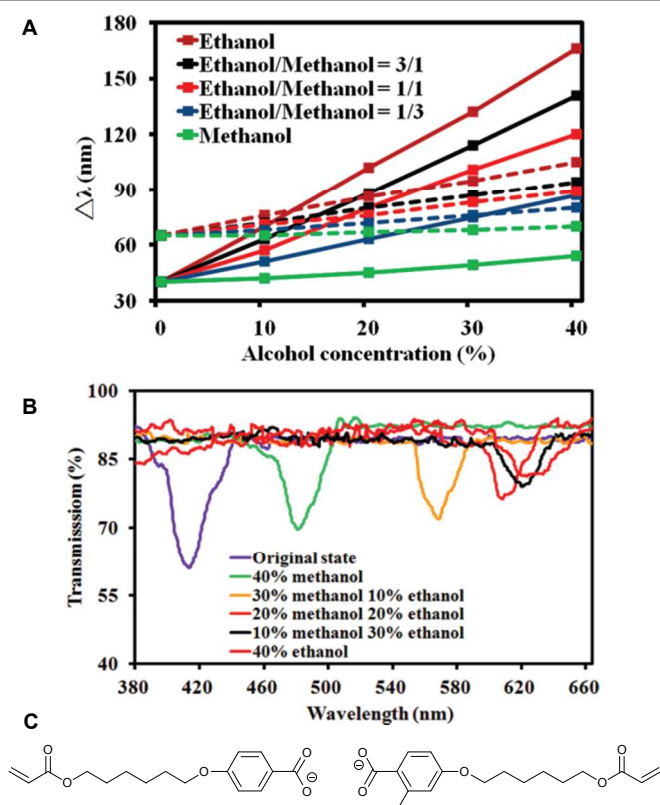


Figure 11, A) solid and dashed lines represent changes in the transmission-valley wavelength of CLC films with and without porosity, respectively in alcohol solutions, with different alcohol concentrations and ratios of methanol/ethanol. B) Optical transmission spectra of CLC in alcohol solutions with different ratios of methanol/ethanol. Reprinted (adapted) with permission from C.-K. Chang, C. W. M. Bastiaansen, D. J. Broer, and H.-L. Kuo, *Macromolecules*, 2012, **45**, 4550–

4555. Copyright 2014 American Chemical Society. C) Chemical structures of the activated carboxylate moieties used in the alcohol sensor of Chang *et al.*^{26,27}

Metal Ion Sensor

Stroganov *et al.* have fabricated a cation sensitive polymer stabilized CLC composite using crown ether moieties in the cholesteric LC polymer network (Figure 11).²⁸ Crown-ethers are well known to form host-guest complexes upon binding with metal ions in which the binding affinity of a certain metal ion is dependent on the size of the crown-ether and the ionic radius of the metal ion. The crown ether moiety used in this investigation is based on 18-crown-6, and the analytes that was investigated were barium and potassium. The composition exists partly from a cholesteric matrix of unreactive mesogens and mono- and diacrylates, yielding a stabilized CLC composite after photo-polymerization. In this way a mechanically stable CLC film is obtained which still has a response to analytes (Figure 12A).

Upon contact with a 0.01 M (aq.) solution of barium perchlorate the selective light reflection shifted to shorter wavelengths (Figure 12A), indicating a decrease of the pitch of the cholesteric helix. The authors address this observation to two possible origins. First, the microphase separation of the of the crown ether-metal complex induces additional twisting of the supramolecular helical pitch of the cholesteric matrix and secondly to a slight collapse of the polymer network caused by the attractive interaction between charged moieties in the crown ether-metal complex. The authors showed that the binding constant of the crown ether was higher for the bivalent barium ions than the monovalent potassium ions with a similar ion radius. The authors did not investigate the selectivity towards other metal ions than barium and potassium, nor the influence of the counter ion.

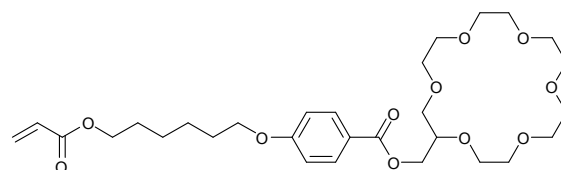


Figure 12, The chemical structures of component in the stabilized CLC composite. Adapted from Stroganov *et al.*²⁸ Copyright © 2012 WILEY-VCH Verlag GmbH & Co. KGaA, Weinheim.

Humidity sensor

In an investigation by Herzer *et al.* an optical humidity sensor was developed.²⁹ The sensor is based on swelling of the CLC polymer film caused by the absorption of water by the hygroscopic properties of the potassium carboxylate salts in the film. This swelling is leading to an increase of the cholesteric pitch, causing the SRB to shift to red. The composition of this CLC polymer film exists of two compounds that can form hydrogen-bonds (Figure 13), a chemical cross-linker, a mono-functional mesogenic acrylate, and a chiral mesogenic acrylate to induce a cholesteric pitch. The mixture was applied on a rubbed polyimide coated glass substrate by bar-coating.

Subsequently, the coating was polymerized with UV light. The concentration of the chiral compound was such that a film was obtained with a SRB at $\lambda = 540$ nm (green colour reflection). In order to obtain the humidity sensing properties, the hydrogen-bonded benzoic acid moieties had to be converted to carboxylate groups. This was done by exposing the CLC network film to a 0.05 M KOH (aq.) solution. Upon exposure to the alkaline solution the film displayed a red-shift until it became colourless (SRB in infrared region). After drying the colour of the resulting carboxylate salt containing polymer film changed back to green, a SRB of $\lambda = 550$ nm was obtained.

The CLC network films were exposed to different relative humidities (RH). If the sensor is exposed to lower RH than the ambient condition a blue-shift is observed, indicating that the film, and thus the cholesteric pitch, shrinks due to the evaporation of water from the CLC network film (Figure 13A). If the RH is higher than ambient condition, a red-shift is observed. Water is adsorbed by the hygroscopic carboxylate moieties causing a swelling and increase of the cholesteric pitch.

In an additional experiment the processability of the material was investigated. The material was inkjet printed on rubbed polyimide coated glass and rubbed polymer foil. The samples were aligning well on both substrates. After the activation step a strong green reflection was obtained. The response of the printed samples was faster than the bar-coated films. The authors explained this effect due to larger defects present in the printed film resulting in a more porous system.

Furthermore, the authors found that when the polymer film was fully saturated with water it could be used as a temperature sensor (Figure 13B and C). The water saturated CLC film was allowed to equilibrate at room temperature, 4 °C, and -24 °C. At low temperatures (below the freezing point of water) the response of the film was extremely slow. Above the freezing point of water, the sensor responds in an irreversible fashion showing that it is possible to utilize this material as a temperature sensor.

Time-Temperature Sensor

With the same liquid crystal mixture as used by Herzer *et al.*, but then not treated with alkaline solution, Davies *et al.* prepared an optical time-temperature (t-T) integrator.³⁰ CLC network films were prepared either by a bar-coating process or inkjet printing. After photo-polymerization the films were mechanically embossed above the glass transition temperature ($T_g = 60$ °C) using a rigid sphere stamp (Figure 14a).

The indentation in the material was 5 – 10 %, resulting in a shift of the SRB of 30 nm. The embossed samples were stable at

room temperature. The rate of recovery becomes increasingly faster with increasing temperature (Figure 14c). When the samples were heated to 40 – 50 °C the SRB changed back irreversibly to the initial state. The response of the sensor is based shape memory effect of the material. When the sample was heated above its T_g the embossed spot flattens and forms a smooth surface (Figure 14b).

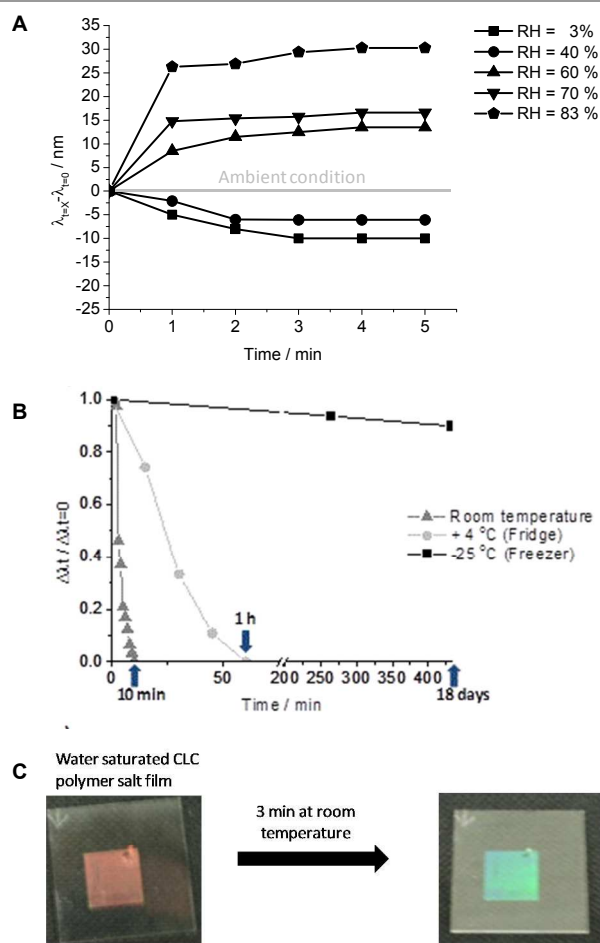


Figure 13, A) The relative shift of SRB to the original SRB (ambient condition) wavelength versus time is plotted for 3, 40, 60, 70 and 83 % RH. B) Time response of the water saturated polymer salt film at room temperature, refrigerator and freezer temperatures: the y-axis signal $\Delta\lambda_t/\Delta\lambda_{t=0}$ is used as measure for the response versus time at different temperatures. The lines are added as a guide to the eye. C) photographs of inkjet-printed water saturated CLC polymer salt film on polyimide coated glass in water (left red film) and after 3 minutes at room temperature (right green film). Adapted with permission from N. Herzer, H. Guneyusu, D. J. D. Davies, D. Yildirim, A. R. Vaccaro, D. J. Broer, C. W. M. Bastiaansen, and A. P. H. J. Schenning, *J. Am. Chem. Soc.*, 2012, 134, 7608–11. Copyright (2012) American Chemical Society.

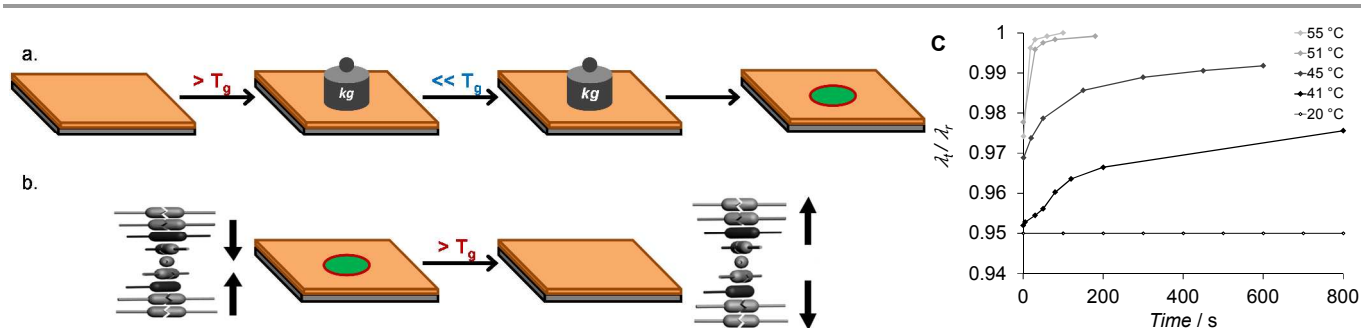


Figure 14, a) Fabrication of the irreversible temperature optical sensor by mechanical embossing. A CLC layer is embossed above the glass transition temperature (T_g) and cooled down below T_g to fixate compressive deformation and a blue shift caused by reduction of the helical pitch. b) Sensing principle of the embossed CLC-layer. The embossed area is preserved below T_g and a permanent red shift is obtained above T_g . c) Time dependent sensor response at different temperatures. At $t = 0$ s, the sensor had reached the temperature set point, λ_r is the wavelength of the SRB after heating the sample to 60 °C leading to recovery of the original SRB band. Adapted from Davies *et al.*³⁰ Copyright © 2013 WILEY-VCH Verlag GmbH & Co. KGaA, Weinheim

Amine sensor

Recently a printable hydrogen-bonded cholesteric liquid crystal (CLC) polymer film has been reported, that can be used as a sensor for detection of gaseous trimethylamine (TMA).³¹ In this optical sensor based on a similar chemical mixture as reported by Shibaev *et al.* the virgin CLC polymer network reflects green light. When exposed to TMA in water-saturated nitrogen gas results in a red reflecting film. Due to the hygroscopic nature of the polymer salt that is formed by TMA, water vapor which is present in the environment is absorbed by the films. This leads to swelling of the film, resulting in an increase in pitch size and therefore a red shift of the reflection band (see Figure 15). Interestingly, after exposure to ambient conditions, restoration of the green reflecting film takes place, showing that the sensor can be used multiple times. In a proof of principle experiment, it was also shown that these CLC films can be used as optical sensors to detect volatile amines that are produced by decaying fish.

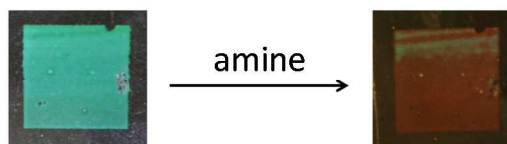


Figure 15, Photographs of the green reflecting CLC film before and after exposure to spoiling codfish. Adapted from Stumpel *et al.*³¹ Copyright © 2014 WILEY-VCH Verlag GmbH & Co. KGaA, Weinheim

Strain Sensor

A flexible, strain sensor has recently demonstrated for monitoring uniaxial deformations in oriented polymer films (Figure 16).³² This sensor consisted of a cross-linked cholesteric liquid crystal layer which was spray-coated on a polyamide substrate showing an orange reflection band. Interestingly upon uniaxial extension, the reflection band shifted towards lower wavelengths and a 40 nm shift was recorded for 13% of strain resulting in a green reflection band (Figure 16). This wavelength shift was attributed to a decrease in the cholesteric helix's pitch which was induced by the

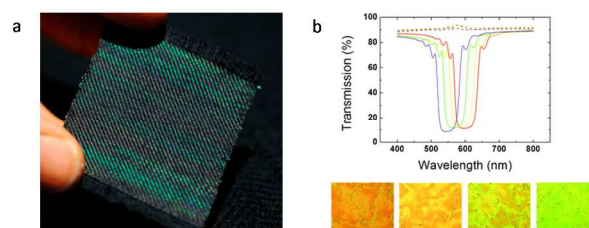


Figure 16. a) CLC coated PA6 woven into textile. Reprinted (adapted) with permission of O. T. Picot, *et al.*³² Copyright (2013) American Chemical Society; b) Transmission spectra of polyamide/CLC bilayer film for different extensions: 0% (red), 2.6% (yellow), 7.7% (green), 13% (violet) and microscopy pictures in reflection mode with corresponding change in color. Reproduced from Picot *et al.*³³ with permission from The Royal Society of Chemistry

change in thickness of the CLC coating as a result of increasing strain. Repeating loading showed a time dependent optical response of the sensor fitting with the strain of the substrate giving real time information on the deformation.

Conclusions and Outlook

Sensors based on cholesteric liquid crystals can be considered as 1D photonic materials that are responsive to a wide range of stimuli. They can respond in a real-time or time integrating manner, as can be concluded from the examples discussed. CLC materials can easily be fabricated by using relatively low cost commercially available liquid crystal compounds and chiral dopants. No complex techniques are required to prepare the photonic band gap materials since the structure is assembled by the self-organization of the molecules.

Furthermore, these optical sensors are not sensitive for photobleaching, as seen for sensors based on reactive dyes, since the principle is based on a change of the selective reflection of light caused by the periodic structure. The prepared photonic materials can respond to various analytes by different mechanisms, resulting in a shift of the selective reflection band (SRB).

For small molecule CLC sensors, the mechanism of the change in SRB can be based on responsive chiral dopants. Both blue- and red-shifts have been demonstrated depending on the mechanism. In other small molecule CLC sensors, analyte

molecules can penetrate the cholesteric superstructure, leading to a swelling causing a strong red shift or ultimately disruption of the helical pitch.

Sensors based on CLC polymer network films appear to be mechanically more stable than the low molecular weight systems. CLC polymer films are generally prepared from liquid crystalline molecules consisting of (meth)acrylate groups. After aligning the CLCs, the cholesteric superstructure can be frozen by photo-polymerization. Mechanisms are based on swelling or loss of order of the cholesteric superstructure by the penetration or reaction with analyte molecules. Another mechanism is the change of the cholesteric superstructure by mechanical force in for instance the time-temperature sensor and the strain sensor discussed.

Various (potential) applications of the chiral nematic sensors have been proposed in articles. For example the use of these materials as optical sensors in the temperature-controlled supply chain of the food and pharmaceutical industries has been proposed. The common temperature range here is 2 to 8 °C but the specific (time integrated) temperature tolerances depend on the product. In the food industry, additional product specific environment parameters such as carbon dioxide, oxygen, amines, humidity and others also play an important role. Other applications mentioned are in the field of anti-counterfeiting. For example to detect counterfeited alcoholic beverages containing for instance the toxic methanol. To measure contaminations or chemical species in water, solvent vapour and strain have also been proposed as possible applications.

All the applications mentioned above are still far from being usable in daily life situations. Often the selectivity, sensitivity, and signal changes do not meet the requirements set for the specific applications. Most sensors suffer from cross-selectivity and/or need co-analytes to work properly. For example, organic vapour sensors appeared to be sensitive to fluctuations in temperature and humidity of the environment, and the oxygen sensor only works in presence of an organic base like triethylamine. Furthermore, sensors do not appear to be sensitive enough for detecting small quantities of the analytes.

Generally, the most sensitive and selective sensors reported so far are based on low molecular weight CLCs in which a responsive chiral dopant is used. However, these samples have a liquid-like nature which hampers their application in for example the food packaging. A solution could be to embed the CLC in a polymer binder to create a polymer dispersed liquid crystal in which the good response of low weight systems can be combined with the processability of polymers.

Finally the CLC sensors can be regarded as responsive pigments which could also be interesting for other areas such as architecture, building and textile applications. Recently we have shown that is possible to spray CLC on polyamide fibres and fabricate woven textile (Figure 16).³³ In such applications selectivity and sensitivity are probably less crucial parameters.

Overall this work shows that chiral nematic liquid crystals can be used as one dimensional photonic materials that act as optical sensors, but for real applications a number of challenging problems has to be resolved first.

Acknowledgements

The authors would like to acknowledge the many discussions and contributions with all of our former and current colleagues. Their names are given in the references cited. A special word of thank is expressed to Dick Broer and Rint Sijbesma for many inspiring discussions and collaborations. The research Eindhoven University of Technology has been supported by the Dutch Polymer Institute (DPI), the Royal Netherlands Academy of Science (KNAW), the Netherlands Organization for Scientific Research (NWO) and the European Young Investigators Awards (EURYI).

Notes and references

^a Laboratory of Functional Organic Materials and Devices, Eindhoven University of Technology

P. O. Box 513, 5600, The Netherlands

E-mail: a.p.h.j.schenning@tue.nl, c.m.w.bastiaansen@tue.nl

^b School of Engineering and Materials Science

Queen Mary University of London

Mile End Road, London. E1 4NS, UK

1. J. Ge, and Y. Yin, *Angew. Chem. Int. Ed.* 2011, **50**, 1492–1522,
2. a) H.-S. Kitzerow and C. Bahr, *Chirality in Liquid Crystals*, Springer-Verlag, New York, 2001. b) D. J. Broer and I. Heynderickx, *Macromolecules*, 1990, **23**, 2474–2477.
3. T. J. White, M. E. McConney, and T. J. Bunning, *J. Mater. Chem.*, 2010, **20**, 9832.
4. J. A. Kelly, A. M. Shukaliak, C. C. Y. Cheung, K. E. Shopsowitz, W. Y. Hamad, and M. J. MacLachlan, *Angew. Chem. Int. Ed. Engl.*, 2013, **52**, 8912–6.
5. M. K. Khan, M. Giese, M. Yu, J. A. Kelly, W. Y. Hamad, and M. J. MacLachlan, *Angew. Chem. Int. Ed. Engl.*, 2013, **52**, 8921–4.
6. C. C. Y. Cheung, M. Giese, J. A. Kelly, W. Y. Hamad, and M. J. MacLachlan, *ACS Macro Lett.*, 2013, **2**, 1016–1020.
7. Y. P. Zhang, V. P. Chodavarapu, A. G. Kirk, and M. P. Andrews, *Sensors Actuators B Chem.*, 2013, **176**, 692–697.
8. I. B. Burgess, M. Lončar, and J. Aizenberg, *J. Mater. Chem. C*, 2013, **1**, 6075;
9. a) R. J. Carlton, J. T. Hunter, D. S. Miller, R. Abbasi, P. C. Mushenheim, L. N. Tan, and N. L. Abbott, *Liq. Cryst. Rev.*, 2013, **1**, 29–51; b) B. Troia, A. Paolicelli, F. De Leonardis, V. Passaro and M.N. Vittorio, *Advances in Photonic Crystals*, V. Passaro, M.N. Vittorio (Eds), Intech, 2013, 241-295
10. a) S. J. Woltman, G. D. Jay, and G. P. Crawford, *Nat. Mater.*, 2007, **6**, 929–938; b) H. Xu, P. Wu, C. Zhu, A. Elbaza and Z. Ze Gu, *J. Mater. Chem. C*, 2013, **1**, 6087–6098
11. F. L. Dickert, A. Haunschild, and P. Hofmann, 1994, 577–581.
12. D. A. Winterbottom, R. Narayanaswamy, and I. M. Raimundo, *Sensors Actuators B Chem.*, 2003, **90**, 52–57.
13. A. Mujahid, H. Stathopoulos, P. A. Lieberzeit, and F. L. Dickert, *Sensors (Basel)*, 2010, **10**, 4887–97.
14. C.-K. Chang, H.-L. Kuo, K.-T. Tang, and S.-W. Chiu, *Appl. Phys. Lett.*, 2011, **99**, 073504.

15. C.-K. Chang, S.-W. Chiu, H.-L. Kuo, and K.-T. Tang, *Appl. Phys. Lett.*, 2012, **100**, 043501.
16. Y. Han, K. Pacheco, C. W. M. Bastiaansen, D. J. Broer, and R. P. Sijbesma, *J. Am. Chem. Soc.*, 2010, **132**, 2961–7.
17. A. Saha, Y. Tanaka, Y. Han, C. M. W. Bastiaansen, D. J. Broer, and R. P. Sijbesma, *Chem. Commun. (Camb.)*, 2012, **48**, 4579–81.
18. X. Wang, C. Drew, S.-H. Lee, K. J. Senecal, J. Kumar, and L. a. Samuelson, *Nano Lett.*, 2002, **2**, 1273–1275.
19. F. Özogul and Y. Özogul, *Food Chem.*, 2006, **99**, 574–578.
20. P. V. Shibaev, K. Schaumburg, and V. Plaksin, *Chem. Mater.*, 2002, **14**, 959–961.
21. P. V. Shibaev, J. Madsen, and A. Z. Genack, *Chem. Mater.*, 2004, **16**, 1397–1399.
22. P. V. Shibaev, D. Chiappetta, R. L. Sanford, P. Palfy-Muhoray, M. Moreira, W. Cao, and M. M. Green, *Macromolecules*, 2006, **39**, 3986–3992.
23. P. V. Shibaev, R. L. Sanford, D. Chiappetta, and P. Rivera, *Mol. Cryst. Liq. Cryst.*, 2007, **479**, 161/[1199]–167/[1205].
24. F. Chen, J. Guo, O. Jin, and J. Wei, *Chinese J. Polym. Sci.*, 2013, **31**, 630–640.
25. F. Chen, J. Guo, Z. Qu, and J. Wei, *J. Mater. Chem.*, 2011, **21**, 8574.
26. C.-K. Chang, C. W. M. Bastiaansen, D. J. Broer, and H.-L. Kuo, *Macromolecules*, 2012, **45**, 4550–4555.
27. C.-K. Chang, C. M. W. Bastiaansen, D. J. Broer, and H.-L. Kuo, *Adv. Funct. Mater.*, 2012, **22**, 2855–2859.
28. V. Stroganov, A. Ryabchun, A. Bobrovsky, and V. Shibaev, *Macromol. Rapid Commun.*, 2012, **33**, 1875–1881.
29. N. Herzer, H. Guneyusu, D. J. D. Davies, D. Yildirim, A. R. Vaccaro, D. J. Broer, C. W. M. Bastiaansen, and A. P. H. J. Schenning, *J. Am. Chem. Soc.*, 2012, **134**, 7608–11.
30. D. J. D. Davies, A. R. Vaccaro, S. M. Morris, N. Herzer, A. P. H. J. Schenning, and C. W. M. Bastiaansen, *Adv. Funct. Mater.*, 2013, **23**, 2723–2727.
31. J. E. Stumpel, C. Wouters, N. Herzer, J. Ziegler, D. J. Broer, C. W. M. Bastiaansen, and A. P. H. J. Schenning, *Adv. Opt. Mater.*, 2014, Early view (DOI:10.1002/adom.201300516).
32. O. T. Picot, M. Dai, E. Billoti, D. J. Broer, T. Peijs, and C. W. M. Bastiaansen, *RSC Adv.*, 2013, **3**, 18794.
33. O. T. Picot, M. Dai, D. J. Broer, T. Peijs, and C. W. M. Bastiaansen, *ACS Appl. Mater. Interfaces*, 2013, **5**, 7117–21.