

Analytical Methods

Accepted Manuscript



This is an *Accepted Manuscript*, which has been through the Royal Society of Chemistry peer review process and has been accepted for publication.

Accepted Manuscripts are published online shortly after acceptance, before technical editing, formatting and proof reading. Using this free service, authors can make their results available to the community, in citable form, before we publish the edited article. We will replace this *Accepted Manuscript* with the edited and formatted *Advance Article* as soon as it is available.

You can find more information about *Accepted Manuscripts* in the [Information for Authors](#).

Please note that technical editing may introduce minor changes to the text and/or graphics, which may alter content. The journal's standard [Terms & Conditions](#) and the [Ethical guidelines](#) still apply. In no event shall the Royal Society of Chemistry be held responsible for any errors or omissions in this *Accepted Manuscript* or any consequences arising from the use of any information it contains.

1
2
3 **Simple and rapid analytical methodology based on liquid chromatography**
4
5 **- tandem mass spectrometry for monitoring pesticide residues in soils**
6
7 **from Argentina**
8
9

10 Eduardo De Gerónimo^{1*}, Ana María Botero-Coy², José M. Marín², Virginia C.
11 Aparicio¹, José L. Costa¹, Juan V. Sancho², Félix Hernández^{*2}
12
13
14

15
16 ¹Instituto Nacional de Tecnología Agropecuaria (INTA), Estación Experimental
17 Agropecuaria Balcarce, Route 226 Km 73,5 (7620), Balcarce, Buenos Aires,
18 Argentina.
19
20
21
22

23
24
25 ² Research Institute for Pesticides and Water, University Jaume I, 12071
26 Castellon, Spain
27
28
29

30
31
32 * Correspondence:

33
34 degeronimo.eduardo@inta.gob.ar; Tel + 54 2266 43900

35 felix.hernandez@uji.es, Tel +34 964 387366
36
37
38
39
40
41
42
43
44
45
46
47
48
49
50
51
52
53
54
55
56
57
58
59
60

ABSTRACT

Rapid analytical methodology has been developed for multi-residue determination of pesticides in soils using liquid chromatography coupled to tandem mass spectrometry (LC-MS/MS) with triple quadrupole analyzer. Soil samples were collected from Argentina in 12 representative agricultural areas, and 18 pesticides were selected on the basis of their use. Special attention was paid to minimize sample preparation, making easier the method application to routine analysis. Several extraction procedures were tested, performing a careful study on matrix effects. The method finally proposed (extraction with acetonitrile and subsequent 2-fold dilution with water without any clean-up step) was fully validated at 0.05 and 0.5 mg/kg on the basis on European SANCO 12571/2013 and 825/00 guidelines. The method applicability and robustness was demonstrated by analysis of quality control (QC) samples, consisting on eleven soils spiked at 0.5 mg/kg. These soil samples were collected from different experimental plots, and were very diverse in their physico-chemical characteristics. The methodology developed is of easy application, there is low consumption of solvents and reagents, and no clean-up is required despite the complexity of the soil matrix. In the near future, the method developed will be used to monitor the presence of pesticides in large agricultural areas of Argentina.

Key words: Pesticide residue analysis; soil; QuEChERS; LC-MS/MS triple quadrupole; matrix effects

1. INTRODUCTION

1
2
3 Argentina is ranked the tenth agricultural nation in the world considering the
4 area under cultivation, based on figures produced by the Food and Agricultural
5 Organization of the United Nations ¹. With 31 million hectares given over to agriculture,
6
7 Argentina accounts for 2.2% of the world's total area under cultivation ². The Argentine
8 agrochemical market has strongly expanded over recent years, with an increase in the
9 consumption from 73 to 236 million kg per year over the last 10 years. This represents
10 a total turnover of US\$ 2381.16 million in 2012, with the following distribution: 64%
11 herbicides, 16% insecticides, and 20% fungicides, acaricides and seeds cure ³.
12
13
14
15
16
17
18
19

20 Transgenic crops account for three quarters of the Argentina's total cultivated
21 land. In addition, 78.5% of agricultural lands are direct seeding ⁴, where the only way of
22 controlling weeds, during cultivation and fallow periods, is by using agrochemicals.
23
24
25

26 Nowadays, the analysis of pesticide residues in environmental waters and soils
27 has become indispensable in agricultural areas. Information provided by both, soil and
28 water, is required to have a realistic knowledge on the impact of agricultural activities
29 on the environment. Soil is a complex-matrix sample, where the presence of many
30 different co-extracted components negatively affects pesticides residue determinations.
31 Particularly, soil organic matter has notable impact on analyses and therefore it is
32 common the inclusion of clean-up steps in the analytical procedure for its removal,
33 even using powerful analytical techniques such as liquid chromatography (LC) coupled
34 to tandem mass spectrometry (MS/MS) ⁵⁻⁷.
35
36
37
38
39
40
41
42
43
44

45 Many different techniques have been used along the time for soil sample
46 preparation, including extraction and/or clean-up, such as Soxhlet extraction,
47 pressurized-liquid extraction (PLE), ultrasound-assisted extraction (UAE), dispersive
48 liquid-liquid microextraction, microwave assisted extraction, liquid-liquid extraction,
49 accelerated solvent extraction, solid-phase extraction (SPE), or solid-phase
50 microextraction ⁸⁻¹¹. However, the classical solid-liquid extraction with organic solvents,
51 commonly followed by appropriate clean-up procedures, has been one of the most
52
53
54
55
56
57
58
59
60

1
2
3 widely used in pesticide residue analysis (PRA) in soils, employing mechanical
4 agitation and/or ultrasounds ^{12,13}.
5
6

7
8 The increasing need to reduce solvent amounts and manual labor in analytical
9 laboratories has led to the commercial introduction of alternative extraction
10 approaches. Among these, the Quick, Easy, Cheap, Effective, Rugged and Safe
11 (QuEChERS) procedure is one of the most popular ¹⁴. Originally developed for fruits
12 and vegetables, QuEChERS is being applied to many other matrices, including soil
13 samples ¹⁵⁻¹⁷. The original procedure consisted on extraction with acetonitrile,
14 separation of water by addition of anhydrous MgSO₄ and NaCl, and subsequent clean-
15 up using dispersive solid-phase extraction (d-SPE) ¹⁴. Some modifications have been
16 included in the QuEChERS procedure due to the possible negative influence on the
17 recovery arising from the retention properties of the soil matrix. Thus, UAE, PLE ¹⁸⁻²⁰,
18 as well as modifications in the clean-up step ²¹⁻²³ have been applied to deal with the
19 matrix interferences commonly found in soil analysis.
20
21
22
23
24
25
26
27
28
29
30
31

32
33 In relation to the analytical techniques applied for PRA in soil, there has been a
34 clear evolution along the time from the first analysis, commonly performed by GC-MS
35 and/or LC-UV, to the most recent ones, based on GC-MS/MS and/or LC-MS/MS, which
36 nowadays are the techniques of choice in this field ^{19,24-28}. The wide majority of
37 pesticides currently applied are of medium-high polarity and of low volatility; therefore
38 LC-MS/MS is the preferred technique for most of them ²⁹. Despite the excellent
39 characteristics of this technique (robustness, and high sensitivity and selectivity), matrix
40 effects are commonly a problem in LC-MS/MS methods and may notably affect the
41 ionization of the analytes leading to important analytical errors if not satisfactorily
42 corrected. This is an important issue in soil analysis, as the matrix sample can largely
43 vary from one soil to the other, making matrix effects correction or minimization
44 troublesome.
45
46
47
48
49
50
51
52
53
54
55
56
57
58
59
60

1
2
3 The goal of this study was to develop a rapid and simple LC–MS/MS multiresidue
4 method for the determination of pesticides in soils commonly found in Argentina. We
5 pursued the minimization of sample manipulation and solvent consumption (i.e. extract
6 the sample and directly inject into the LC-MS/MS) in order to make the method easier
7 to apply and to implement in Argentinian laboratories. To this aim, soil extraction with
8 different organic solvents was tested and the results compared with the QuEChERS in
9 order to select the most appropriate in terms of extraction efficiency, less matrix effects,
10 minimum sample treatment and better robustness. The method developed was
11 validated and evaluated for several soil samples collected from different agricultural
12 areas of Argentina.
13
14
15
16
17
18
19
20
21
22

23 24 25 **2. EXPERIMENTAL**

26 27 28 **2.1 Reagents and chemicals**

29
30
31 Pesticide reference standards were from Dr. Ehrenstorfer (Augsburg,
32 Germany). HPLC-grade methanol (MeOH), HPLC-grade acetonitrile (ACN), and
33 acetone for residue analysis from Scharlab (Barcelona, Spain). HPLC-grade water was
34 obtained by purifying demineralized water in a Milli-Q Gradient A10 (Millipore, Bedford,
35 MA, USA). Formic acid (HCOOH, content >98%) and ammonium acetate (NH₄Ac,
36 reagent grade) were supplied by Scharlab.
37
38
39
40
41
42
43

44
45 QuEChERS (CEN) standard method EN 15622 reagents were purchased from
46 Scharlab.
47
48

49
50 Stock standard solutions were prepared dissolving 50 mg, accurately weighted,
51 in 100 mL of acetone, obtaining a final concentration around 500 mg/L. For LC-MS
52 analysis, the stock solutions were ten-fold diluted with ACN to prepare individual
53 solutions around 50 mg/L. From these, mixed solutions were prepared by diluting with
54
55
56
57
58
59
60

1
2
3 ACN to obtain a final concentration of 5 mg/L. Working mix solutions of all pesticides
4
5 were prepared from the 5 mg/L solutions by dilution with ACN.
6

7
8 In order to remove solid particles, nylon syringe filters (0.22 μm) were tested
9
10 (Supelco, Bellefonte, PA, USA).
11

12 13 **2.2 Sampling area**

14
15
16 Samples were collected from 12 experimental fields of Instituto Nacional de
17
18 Tecnología Agropecuaria (INTA) (**Figure 1 SI**), where no agricultural activity took place
19
20 in the last years. En each sampling plot, a composite sample from 50 sub-samples
21
22 (from 0 to 5 cm depth) was prepared.
23

24
25 The probe was cleaned by discarding several extractions in order to avoid any
26
27 contamination between samples. The samples were conditioned using a hot-air heater
28
29 set at 30 °C, and then dry milled. The mill was used only for untreated samples in order
30
31 to avoid contamination, and it was cleaned between samples by washing with
32
33 abundant water. The dried samples were then passed through a 2 mm sieve.

34
35 In the INTA laboratory at Balcarce, soil texture of all the samples was
36
37 determined, as well as cation-exchange capacity (CEC), pH and total organic carbon
38
39 (**Table 1, Supplementary Information**).
40
41

42 43 **2.3 Selected pesticides**

44
45 Pesticides selected as target analytes were chosen among the most widely used in
46
47 agricultural practices of Argentina³⁰. In the list of the 30 most-consumed pesticides, the
48
49 3 top compounds are herbicides, specifically glyphosate, 2,4-D and atrazine. The
50
51 second and third compounds were selected for this work, but unfortunately glyphosate
52
53 could not be included in this multi-residue methodology due to its particular physico-
54
55 chemical characteristics, which require the use of specific methodology for this
56
57 compound⁷. Other compounds from the list of most-consumed pesticides included in
58
59
60

1
2
3 the present work were chlorpyrifos, picloram, metolachlor, imidachloprid and fipronil.
4 Those pesticides from the top-list that were more appropriate for GC analysis were
5 excluded from this study, and finally another eleven LC-MS amenable compounds,
6 frequently used in agricultural practices around the world, were also considered making
7 a total of 18 target pesticides including herbicides (8), fungicides (2) and
8 insecticides/acaricides (8).
9
10
11
12
13
14
15
16

17 **2.4 Liquid chromatography/mass spectrometry**

18
19 A Waters Alliance 2795 LC system was interfaced to a Quattro micro triple
20 quadrupole mass spectrometer (Waters Milford, MA, USA) using an orthogonal Z-
21 spray–electrospray interface. The LC separation was performed using a Brisa C18
22 column (3 μm , 5 cm \times 2.1 mm; Teknokroma) at a flow rate of 0.2 mL/min. The mobile
23 phase was water (0.1 mM NH_4Ac)/MeOH with a gradient where the percentage of
24 MeOH changed as follows: 0 min, 20%; 1 min, 20%; 1.8 min, 35%; 6 min, 80%; 11 min
25 95%; 11.5 min 95%; 12 min to 15 min, 20%.
26
27
28
29
30
31
32
33

34 The drying gas as well as the nebulizing gas was nitrogen. The desolvation gas
35 and cone gas flows were adjusted to 600 and 60 L/h, respectively. Infusion
36 experiments were performed using the built-in syringe pump, directly connected to the
37 interface. For operation in MS/MS mode, the collision gas was argon (99.995%;
38 Praxair, Valencia, Spain) at a pressure of 2×10^{-3} mbar in the collision cell. Capillary
39 voltages of 3 kV in negative ionization mode and 3.5 kV in positive mode were used.
40
41
42
43
44
45
46

47 The interface temperature was set to 350 °C and the source temperature to 120
48 °C. In order to assure at least 10 points per chromatographic peak, compounds were
49 distributed in different functions at dwell times of 0.1 s except for picloram (0.2 s). Two
50 solvent delays were selected to give an additional clean-up using the built-in divert
51 valve controlled by the Masslynx v.4.1 software, the first one from 0 to 2.3 min and the
52
53
54
55
56
57
58
59
60

1
2
3 second one from 12 to 15 min. The application manager TargetLynx was used to
4 process the quantitative data obtained from calibration standards and from samples.
5
6
7

9 10 **2.5 Recommended procedure**

11
12 5.0 g of soil sample (previously dried at room temperature and homogenized)
13 were weighted into a 50-mL centrifuge tube and extracted with 5 mL water and 25 ml
14 ACN in a mechanical shaker for 1h followed by ultrasonic bath for 15 min. Then, it was
15 centrifuged at 4600 rpm for 10 min. A 500 μ L aliquot of the supernatant was diluted
16 with 500 μ L HPLC-grade water into a glass tube. Then, 10 μ L formic acid was added to
17 adjust its final content to 1%. After that, the extracts were filtered through a 0.22 μ m
18 nylon membrane. Analyses were performed by injecting 20 μ L of the final extract in the
19 LC-ESI-MS/MS system.
20
21
22
23
24
25
26
27

28
29 Calibration curves in solvent (between 1 and 100 ng/mL) were prepared by
30 taking 440 μ L water, and adding 10 μ L HCOOH, 100 μ L of corresponding standard mix
31 solutions and 400 μ L of acetonitrile. QCs were also analyzed in every set of samples
32 for quality control in order to ensure the recoveries were within the tolerance range (60-
33 140%) following SANCO guidelines.
34
35
36
37
38

39
40 Fortification of samples for recovery experiments (in both method validation and
41 preparation of QCs) was performed by delivering 1 mL of 0.25 or 2.5 μ g/mL standard
42 mix solutions in acetonitrile to 5 g homogenized soil sample in order to yield fortification
43 levels of 0.05 or 0.5 mg/kg, respectively. The fortified samples were aged for 1 h prior
44 extraction.
45
46
47
48
49
50

51 52 **2.6 Method validation**

53
54 In the absence of specific guidelines for soil analysis, validation of the method was
55 made on the basis of the European Union SANCO 12571/2013 guideline for pesticide
56
57
58
59
60

1
2
3 residues analysis in food and feed ³¹. In addition, the SANCO 825/00, Rev.1 guidance
4 document on residue analytical methods was also taken into account ³². Linearity was
5 studied by injecting (in triplicate) standards in solvent (ACN:water) and also in the soil
6 extract used for method development at seven concentrations in the range 1– 100
7 ng/mL (equivalent to 0.012–1.2 mg/kg in sample). Precision (repeatability, % relative
8 standard deviation) and accuracy (% recoveries) were estimated by recovery
9 experiments in soil at two fortification levels, 0.05 and 0.5 mg/kg (analyzed in
10 quintuplicate). The limit of quantification (LOQ) objective was set as the lowest
11 concentration validated in fortified samples with satisfactory precision (RSD<20%) and
12 recovery (70 -120%).
13
14
15
16
17
18
19
20
21
22

23
24 The specificity of the method was evaluated from the quantification transition by
25 analysis of a procedure blank, a processed blank sample, and a processed blank
26 sample spiked at the LOQ level.
27
28
29

30 Confirmation of the identity of the compound in the samples was carried out by
31 acquisition of two MS/MS transitions and the compliance of the q/Q ratio (where q, Q
32 are the confirmation and quantification transitions, respectively) between samples and
33 reference standards, with maximum tolerance of $\pm 30\%$. The agreement in retention
34 time was also required, with maximum deviation of ± 0.2 min between the analyte in
35 sample and the reference standard ³¹.
36
37
38
39
40
41
42
43
44

45 3. RESULTS AND DISCUSSION

46
47 Soil samples selected in this work presented wide range of organic matter
48 content (between 0.5 and 10.3%), clay (between 6.4 and 69.5%), CEC (between 9 and
49 40.5 cmol kg⁻¹), and pH (from 5.7 to 7.5) (**see Table 1, Supplementary Information**).
50 Therefore, the analytical methodology was tested in very different soil types, with a
51 notable variation in their physico-chemical characteristics. This allowed us to support
52 the robustness of the method and its applicability to a large variety of soil matrices.
53
54
55
56
57
58
59
60

3.1 MS optimization

MS/MS parameters were optimized by infusion of 2.5 mg/L methanol: water (50:50, v/v) individual solutions of each compound, at a flow rate of 10 μ L/min. Full-scan mass spectra were acquired to select the precursor ion and optimum cone voltage. Once the precursor ion was selected, product ion scan acquisitions were performed at different collision energies in order to select product ions and optimum collision energies.

The majority of the analytes were determined by positive ionization mode, with a few exceptions for acidic compounds that gave a better response in negative mode (2,4-D, MCPA and fipronil). The formation of sodium adducts (cyanazine, dimethoate, metolachlor, carbaryl) was minimized adding 5mM of NH_4Ac in the vial, increasing in this way the abundance of the protonated molecule. Under the experimental conditions finally selected, all precursor ions corresponded to $[\text{M}+\text{H}]^+$ in positive ESI, or $[\text{M}-\text{H}]^-$ in negative ESI.

Two transitions were selected for each compound for analysis under selected reaction monitoring (SRM) mode. The most sensitive (Q) was used for quantification purposes, while the second transition (q) was used for confirmation of the identity, avoiding those transitions corresponding to non-specific losses such as H_2O and CO_2 .

The presence of atoms with abundant characteristic isotope distribution (e.g., Cl) in the chemical structure was used to improve the identification process of some analytes by selecting the transitions corresponding to both ^{35}Cl and ^{37}Cl . This occurred for picloram and cyanazine (measured in ESI+) and for 2,4-D and MCPA (negative mode) (**Figure 2SI**).

1
2
3 The mass spectrometry parameters selected, i.e. precursor and product ions,
4 cone voltage and collision cell energy, together with the q/Q intensity ratio (a relevant
5 parameter in the confirmation process) are shown in **Table 1**.
6
7
8
9

10 11 **3.2 Chromatographic conditions**

12
13
14 Two organic solvents (ACN and MeOH) as well as two modifiers (HCOOH and
15 NH₄Ac) were tested to optimize the chromatographic separation and mass
16 spectrometry signal (increase of sensitivity and satisfactory peak shape). The study
17 was made with mix standard solutions (100 µg/L each compound) in solvent. Under the
18 final conditions selected, matrix-matched standards at 100 µg/L were also injected to
19 test for possible variations in retention time and peak shape.
20
21
22
23
24
25
26

27 As expected, most of compounds determined in positive mode presented better
28 ionization yield when MeOH was used as organic modifier due to its protic character.
29 On the contrary, for those compounds determined under negative ionization, the use of
30 an aprotic solvent in the mobile phase, as acetonitrile, favored their ionization. In order
31 to improve their chromatographic retention, the acidification of the mobile phase, by
32 adding low amounts of HCOOH, was necessary. Therefore, the use of acetonitrile with
33 an acidic additive seemed a good option for compounds ionized in negative mode
34 trying to reach a compromise between chromatographic retention and ionization.
35
36
37
38
39
40
41
42

43 The effect of adding NH₄Ac as modifier was also evaluated, with the result that
44 sensitivity and peak shape improved for most compounds when a small amount (0.1
45 mM) was present in the aqueous phase. The addition of NH₄Ac in the organic solvent
46 did not produce a significant improvement; therefore, NH₄Ac was added only to the
47 aqueous phase. As the majority of analytes (15 out of 18) were determined in positive
48 ionization mode, we finally selected methanol as organic solvent in the mobile phase
49 and NH₄Ac as modifier in the aqueous phase.
50
51
52
53
54
55
56
57
58
59
60

1
2
3 In order to obtain better retention for the most polar compounds, 10% of
4 methanol was tested as initial percentage. However, an excessive band broadening
5 was observed for some compounds. This situation was improved by increasing the
6 initial content of methanol. Starting the gradient at 20% of MeOH led to satisfactory
7 retention and peak shape for nearly all analytes. Nevertheless, under these conditions
8 acidic analytes like MCPA, fipronil or 2,4-D, showed lower sensitivity and poor
9 chromatographic retention. HCOOH (0.01 and 0.1 %) was tested in both water and
10 MeOH phases in order to increase their retention, but it was discarded because
11 sensitivity decreased and worse peak shapes were obtained. Therefore, the addition of
12 0.5 or 1% (v/v) HCOOH in the sample vial was tried, avoiding in this way the
13 continuous entrance of this additive into the ionization source. Using 1% HCOOH in the
14 sample vial provided better peak shape and acceptable reproducibility, increasing
15 significantly the sensitivity in negative mode.
16
17
18
19
20
21
22
23
24
25
26
27
28
29

30 The chromatographic conditions finally selected are indicated in "Experimental".
31 Under these conditions, the compounds eluted as shown in **Table 1**, with retention
32 times between 3.1 min (picloram) and 12 min (pendimethalin).
33
34
35

36 The two SRM transitions per compound were distributed in eleven functions
37 according to the retention times in order to achieve adequate number of points per
38 chromatographic peak.
39
40
41
42
43

44 **3.3 Matrix effects evaluation**

45
46
47 A detailed study of matrix effects was made by comparison of standards in
48 solvent and in soil matrix at the same concentration after application of different sample
49 treatments. Firstly, three extracting solvents were studied (MeOH, ACN and acetone),
50 following the recommended procedure (see section 2.5). For each solvent, the effect of
51 2-, 5- and 10-fold dilution with water of the initial soil extract was assayed in order to
52 reduce potential matrix effects.
53
54
55
56
57
58
59
60

1
2
3 To evaluate matrix effects (%ME), the response/signal obtained for each
4 analyte in the soil extract (S_{matrix}) was compared with that in solvent (S_{solvent}) at the
5 same concentration. To perform this study, soil extracts spiked at 50 ng/mL ($n=3$) were
6 used. The ratio $[(S_{\text{matrix}} - S_{\text{blank}})/S_{\text{solvent}}] \times 100$ was taken as absolute matrix effect,
7 where S_{blank} corresponded to the analyte signal of the non-spiked extract of soil. Thus,
8 ME 100% means that no matrix effect was observed. Values below or above 100%
9 indicate ionization suppression or enhancement, respectively. No significant matrix
10 effects were considered to be present when ME ranged between 70% and 120% (i.e.
11 the same range used as acceptable recoveries in method validation).
12
13
14
15
16
17
18
19
20

21
22 A summary of the results can be found in **Supplementary Information**. Both
23 ionization suppression and enhancement were observed although most analytes were
24 influenced by suppression. Acetone was found to be less suitable for extraction in
25 terms of matrix effects, surely due to the larger amount of co-extractive compounds in
26 this solvent. The use of MeOH and ACN led in general to lower matrix effects for most
27 of compounds selected. As expected, the effect of diluting the extracts with water
28 resulted in a minimization of matrix effects, in such a way that a dilution x10 led to
29 satisfactory values (between 70 and 120%) for almost all compounds (**Figure 3 SI**). We
30 finally selected a 2-fold dilution as a compromise between minimization of matrix
31 effects and sensitivity required to reach the limit of quantification objective in this work
32 (0.05 mg/kg).
33
34
35
36
37
38
39
40
41
42
43

44
45 A comparison of the matrix effects observed with the three extracting solvents
46 after 2-fold dilution of the soil extract with water is shown in **Figure 4 SI**.
47
48

49
50 Moreover, a slight modification of QuEChERS (CEN) standard method EN
51 15622 (extraction of 5 g soil sample with water (5 mL) and acetonitrile (10 mL),
52 followed by a salting-out with 4 g MgSO_4 , 1 g NaCl, 1 g sodium citrate dihydrate and
53 0.5 g di-sodium hydrogen citrate sesquihydrate) was tested. In order to minimize matrix
54 effects observed, 2-fold dilution (final analyte concentration 50 $\mu\text{g/L}$), 4-fold dilution (20
55
56
57
58
59
60

1
2
3 $\mu\text{g/L}$) and 5-fold dilution (10 $\mu\text{g/L}$) were checked (**Figure 5 SI**). Matrix effects were
4 irrelevant (between 70-120%) at dilution x 5, except for 2,4D and MCPA that presented
5 signal enhancement. As expected, matrix effects become more important in more
6 concentrated extracts (i.e. 2-fold dilution), where signal suppression was mostly
7 observed for analytes measured in positive ionization whereas a notable signal
8 enhancement occurred for those determined in negative mode (MCPA, 2,4D and
9 Fipronil). Moreover, different clean-up reagents, as octadecyl-silanized silica gel (C18),
10 Florisil, graphitized carbon black (GCB), and $\text{MgSO}_4/\text{C18}$ and $\text{MgSO}_4/\text{C18}/\text{GCB}$
11 mixtures, were evaluated in the QuEChERS procedure. After the clean-up step, a 2-
12 fold extract dilution was carried out without any improvement of the results obtained.
13 The commonly applied dispersive-SPE step with primary-secondary amine (PSA) was
14 not tested in this work due to the low recoveries reported for acidic compounds when
15 using PSA for clean-up [33]. The retention of acidic analytes, as picloram, 2,4-D,
16 fipronil or imazapic, on PSA material has been reported as the main reason of the low
17 recoveries [15,17,34,35]. In this work, the results after application of different clean-up
18 procedures did not substantially improve. It seemed that the highly concentrated soil
19 extract (1:2) employed, led to strong matrix effects in all cases for this type of matrices.
20
21
22
23
24
25
26
27
28
29
30
31
32
33
34
35
36
37

38 After all experiments performed, the extracting system finally selected was
39 acetonitrile with two-fold dilution of the soil extract with water. Using this procedure,
40 signal enhancement or signal suppression was not much significant for most
41 compounds (ME for the soil tested varied between 60-120% for the analytes under
42 study).
43
44
45
46
47

48 Nowadays, the use of isotope-labelled internal standards (ILIS) is widely
49 accepted as an efficient and simple way to correct matrix effects. However, in multi-
50 residue methods the use of ILIS is problematic due to the high cost and the
51 unavailability of commercial ILIS for all analytes. Although only three ILIS were
52 available at our laboratory (dimethoate-d6, MCPA-d3, chlorpyrifos-d10), we compared
53
54
55
56
57
58
59
60

1
2
3 the results for the corresponding analytes (dimethoate, MCPA, chlorpyrifos) using
4 calibration in solvent, with and without ILIS correction. MCPA showed recoveries at the
5 LOQ level above 120% without applying correction. However, the use of its deuterated
6 internal standard allowed correcting its recovery (working with relative areas),
7 highlighting the relevance of using ILIS for each compound for an efficient matrix
8 effects correction. The other two ILIS tested (dimethoate-d6, chlorpyrifos-d10) seemed
9 unnecessary as the recoveries for dimethoate and chlorpyrifos were satisfactory
10 without ILIS correction (**Table 2**). Therefore, the use of MCPA-d3 as ILIS is
11 recommended, if available to the laboratory.
12
13
14
15
16
17
18
19
20

21
22 Due to the lack of ILIS availability in our laboratory for every analyte included in
23 the method, we applied an alternative approach to assure correct quantification. It
24 consisted on the analysis of all soil samples with and without fortification at 0.5 mg/kg.
25 This implies that a quality control (QC) was analyzed for every soil. Therefore, a
26 correction factor for quantification might be applied depending on the QC recovery in
27 those cases that it was out of the tolerance window (see Analysis of Soil Samples
28 section)
29
30
31
32
33
34
35
36
37
38

39 **3.4 Method validation**

40
41 Linearity was satisfactory in the range 1– 100 ng/mL, in both solvent and in
42 matrix-extract resulting after application of the recommended procedure. Correlation
43 coefficients were higher than 0.99 and residuals lower than $\pm 30\%$ for all pesticides.
44
45
46
47

48 The method was validated using a soil sample that was spiked at two
49 concentrations (analysis in quintuplicate). An estimation of matrix effects for this soil
50 was made previously to method validation because it was different to the soil used in
51 matrix effects evaluation section. Data obtained revealed a rather similar behavior,
52 except for the three compounds measured in negative mode (**Figure 1**).
53
54
55
56
57
58
59
60

1
2
3 The results for precision and accuracy at the two concentrations tested (0.05
4 and 0.5 mg/kg) are shown in **Table 2**. Data were obtained performing quantification
5 with standards in solvent (ACN:water). The method presented satisfactory precision
6 (RSD<20%) and accuracy (recoveries between 70 and 120%) for all analytes, at the
7 two levels of fortification, with the exception of the herbicide picloram, whose
8 recoveries were around 50%. Some authors also reported low recoveries for this weak
9 acid herbicide when extracted from soils at pH lower than 7⁶. The QC samples for
10 picloram in the soils tested had average recoveries between 47 and 60%, which was
11 consistent with data obtained in method validation. Although not tested in this work, the
12 use of picloram ILIS, added as surrogate, seems the easiest and best solution to
13 correct the analytical errors for this herbicide.
14
15
16
17
18
19
20
21
22
23
24

25 The LOQ objective was established to be 0.05 mg/kg, as this was the lowest
26 analyte spiked level in samples that was fully validated with satisfactory precision and
27 accuracy³¹. This value of 0.05 mg/kg is typically fixed as LOQ for pesticide residue
28 methods in soil³². In order to illustrate the capability of the method to detect low
29 analyte concentrations, the limit of detection (LOD) was estimated for a signal-to-noise
30 ratio of 3 from the lowest point of the calibration prepared with standards in soil matrix
31 (equivalent to 0.012 mg/kg) (be aware that the term LOD in this case is not used as
32 limit of determination, as in certain guidances³²). The estimated LODs varied between
33 0.1 and 4 µg/kg (**Table 2**). The method was found specific as no relevant signals were
34 observed in the blank extracts analyzed at the analyte retention time (**see Figure 2** as
35 an example for selected compounds).
36
37
38
39
40
41
42
43
44
45
46
47
48
49
50

51 **3.5 Analysis of soil samples**

52
53
54 Soils may strongly differ in their physico-chemical characteristics, which mean
55 that a method satisfactorily validated for one soil sample only may be questionable for
56 other soils. Therefore, with this type of matrices is important to ensure the robustness
57
58
59
60

1
2
3 of the method and that data are satisfactory for different types of soils. This implies
4 testing the method in a notable number of soil samples. Keeping this objective in mind,
5 after method validation in the soil selected the methodology developed was assayed in
6 eleven soil samples from different physico-chemical characteristics analyzing each soil
7 before and after fortification (at 0.5 mg/kg) with the pesticides mixture, i.e. preparing
8 individual QCs for each soil. Recoveries of the 11 individual QC samples served as an
9 additional validation and supported the robustness and applicability of the method.
10
11

12
13
14
15
16
17
18
19
20
21
22
23
24
25
26
27
28
29
30
31
32
33
34
35
36
37
38
39
40
41
42
43
44
45
46
47
48
49
50
51
52
53
54
55
56
57
58
59
60

Soil samples used in this work (**Figure 1SI**) were considered as “blank” samples as no pesticides were expected to be found. Besides the eleven QCs analyzed additional QCs were prepared with the same soil used in validation experiments at 0.05 and 0.5 mg/kg fortification levels (in triplicate).

The results are shown in **Table 3**. As it can be seen, recoveries for the eleven QCs were highly satisfactory, leading to average values between 70-120%, with the only exception of picloram (60%). RSDs were excellent taking into account that all were individual values from different soils. Similarly, the QCs prepared from the soil used in the validation experiments (in triplicate) were in general satisfactory, with values from 60-120% for nearly all compounds at the LOQ and 10xLOQ level (i.e. 0.05 and 0.5 mg/kg). Again, picloram showed low recoveries (47%) at both concentrations. Recoveries for MCPA and carbaryl were satisfactory at 0.5 mg/kg, but they were higher than 120% at the LOQ level. This behavior was consistent with data obtained in method validation.

Despite that soil samples were collected from experimental fields without agricultural activities for several years, up to five pesticides were detected in 8 out of 11 soils analyzed: ametryn, atrazine, chlorpyrifos, dimethoate, imidacloprid (**See S.I. Table 2**). The herbicide atrazine was the most detected (4 soil samples). Ametryn, dimethoate, imidacloprid and chlorpyrifos were detected in two soil samples each. However, pesticide concentrations were mostly below the LOQ objective (0.05 mg/kg),

1
2
3 and did not exceed 0.1 mg/kg in any sample. The presence of some pesticides in the
4
5 soils at very low concentrations was not considered much significant, and might be due
6
7 to some drift when applying pesticides in nearby areas.
8

9
10 **Figure 3** shows selected LC-MS/MS chromatograms for Pergamino soil
11
12 sample, where three pesticides were detected. The identity of the compounds in the
13
14 sample was confirmed by retention time and ion ratio agreement in comparison with
15
16 the reference standard. As it can be seen, q/Q ratio deviation in all positives was within
17
18 the maximum tolerance of $\pm 30\%$ (SANCO/12571/2013).
19

20 21 22 **4. CONCLUSIONS**

23
24 A simple and fast LC-MS/MS multiresidue method has been developed for
25
26 determination of pesticides of environmental concern in soil samples. After soil
27
28 extraction with acetonitrile (1 hour mechanical shaking followed by 15 min ultrasounds)
29
30 and two-fold dilution of the extract with water, satisfactory recoveries were obtained at
31
32 0.05 mg/kg and 0.5 mg/kg, with LODs between 0.1 and 4 $\mu\text{g}/\text{kg}$. No clean-up steps
33
34 were necessary, minimizing in this way sample manipulation, solvents and reagent
35
36 consumption, and analysis time. The applicability of the method to very different types
37
38 of soils from Argentina was demonstrated by analysis of QCs for each soil analyzed.
39
40 Therefore, the analytical methodology proposed in this paper can be easily
41
42 implemented to routine laboratories for monitoring pesticide residues in different types
43
44 of soils.
45

46
47 Matrix effects were carefully studied and, with few exceptions, were not much relevant,
48
49 allowing quantification of the compounds using standards in solvent. Despite the soils
50
51 used in this study had not been employed for agricultural purposes for many years, two
52
53 herbicides (atrazine, ametryn) and three insecticides (chlorpyrifos, imidachloprid,
54
55 dimethoate) were detected at low concentrations (mostly below 0.07 mg/kg). This might
56
57
58
59
60

1
2
3 be due to their use in the surrounding areas or as a result of uncontrolled runoff
4
5 processes.
6
7

8 9 **ACKNOWLEDGEMENTS**

10 The financial support of Generalitat Valenciana (Research Group of Excellence
11 Prometeo 2009/054 and Prometeo II 2014/023; Collaborative Research on
12 Environment and Food-Safety, ISIC/2012/016) is acknowledged. The authors would
13 like to thank the staff at the agricultural sites for allowing them to use their facilities to
14 carry out this study, and to INTA for providing the budget and the necessary
15 infrastructure to obtain this data.
16
17
18
19
20
21
22
23
24
25
26
27
28
29
30
31
32
33
34
35
36
37
38
39
40
41
42
43
44
45
46
47
48
49
50
51
52
53
54
55
56
57
58
59
60

REFERENCES

- 1 Argenbio, 2012. "Gracias a los transgénicos, la Argentina ya está entre los primeros 10 países agrícolas." <http://argenbio.org/index/notas/5923> (accessed April 2015).
- 2 Osaro, 2015. <http://bcr.com.ar/default.aspx> (accessed April 2015).
- 3 Cesafe, 2013. <http://www.casafe.org/> (accessed April 2015).
- 4 V. C. Aparicio, E. De Gerónimo, D. Marino, J. Primost, P. Carriquiriborde and J. L. Costa, *Chemosphere*, 2013, **93**, 1866–73.
- 5 V. Andreu and Y. Picó, *TrAC Trends Anal. Chem.*, 2004, **23**, 772–789.
- 6 E. Assis, A. Silva, L. Barbosa, M. Queiroz, L. D'Antonino and V. GonCalves, *Planta Da*, 2011, 683–696.
- 7 A. M. Botero-Coy, M. Ibáñez, J. V Sancho and F. Hernández, *J. Chromatogr. A*, 2013, **1292**, 132–41.
- 8 S. S. Albaseer, R. Nageswara Rao, Y. V. Swamy and K. Mukkanti, *J. Chromatogr. A*, 2010, **1217**, 5537–5554.
- 9 S. Net, A. Delmont, R. Sempéré, A. Paluselli and B. Ouddane, *Sci. Total Environ.*, 2015, **515-516**, 162–180.
- 10 K. Ahmadi, Y. Abdollahzadeh, M. Asadollahzadeh and A. Hemmati, *Talanta*, 2015, **137**, 167–173.
- 11 F. Hernández, J. Beltran, F. J. Lopez and J. V. Gaspar, *Anal. Chem.*, 2000, **72**, 2313–2322.
- 12 M. R. Rigi, M. Farahbakhsh and K. Rezaei, *J. Brazil Chem Soc.*, 2015, **26**, 156–164.
- 13 C. Tadeo, Jose., Perez, Rosa., Albero, Beatriz., Garcia-Valcácer, Ana., Sánchez-Brunete and A. L. N. van Nuijs, *J. AOAC Int.*, 2012, **14**, 1258 – 1271.
- 14 M. Anastassiades, S. J. Lehotay, D. Stajnbaher and F. J. Schenck, *J. AOAC Int.*, 2003, **86**, 412–31.
- 15 J. L. D. O. Arias, C. Rombaldi, S. S. Caldas and E. G. Primel, *J. Chromatogr. A*, 2014, **1360**, 66–75.
- 16 M. C. Bruzzoniti, L. Checchini, R. M. De Carlo, S. Orlandini, L. Rivoira and M. Del Bubba, *Anal. Bioanal. Chem.*, 2014, **406**, 4089–116.
- 17 Y. Cheng, F. Dong, X. Liu, J. Xu, W. Meng, N. Liu, Z. Chen, Y. Tao and Y. Zheng, *Anal. Methods*, 2014, **6**, 1788 – 1795.
- 18 N. Homazava, C. Gachet Aquillon, E. Vermeirssen and I. Werner, *Int. J. Environ. Anal. Chem.*, 2014, **94**, 1085–1099.

- 1
2
3 19 N. Ivdra, S. Herrero-Martín and A. Fischer, *J. Chromatogr. A*, 2014, **1355**, 36–
4 45.
5
6 20 A. Masiá, K. Vásquez, J. Campo and Y. Picó, *J. Chromatogr. A*, 2015, **1378**, 19–
7 31.
8
9 21 S. S. Caldas, C. M. Bolzan, M. B. Cerqueira, D. Tomasini, E. B. Furlong, C.
10 Fagundes and E. G. Primel, *J. Agric. Food Chem.*, 2011, **59**, 11918–11926.
11
12 22 T. Chai, Q. Jia, S. Yang and J. Qiu, *J. Sep. Sci.*, 2014, **37**, 595–601.
13
14 23 S. Li, X. Liu, Y. Zhu, F. Dong, J. Xu, M. Li and Y. Zheng, *J. Chromatogr. A*, 2014,
15 **1358**, 46–51.
16
17 24 V. C. Fernandes, S. J. Lehotay, L. Geis-Asteggianti, H. Kwon, H. G. Mol, H. van
18 der Kamp, N. Mateus, V. F. Domingues and C. Delerue-Matos, *Food Addit*
19 *Contam Part A Chem Anal Control Expo Risk Assess*, 2014, **31**, 262–270.
20
21 25 F. Hernández, M. Ibañez and T. Portolés, in *Comprehensive Environmental*
22 *Mass Spectrometry*, ed. A. L. I. Publications, 2012, pp. 309 – 328.
23
24 26 F. Hernández, M. I. Cervera, T. Portolés, J. Beltrán and E. Pitarch, *Anal.*
25 *Methods*, 2013, **5**, 5875.
26
27 27 A. Kruve, R. Rebane, K. Kipper, M.-L. Oldekop, H. Evard, K. Herodes, P. Ravio
28 and I. Leito, *Anal. Chim. Acta*, 2015, **870**, 8–28.
29
30 28 P. Herrero, F. Borrull, E. Pocurull and R. M. Marcé, *TrAC Trends Anal. Chem.*,
31 2014, **62**, 46–55.
32
33 29 H. V Botitsi, S. D. Garbis, A. Economou and D. F. Tsiipi, *Mass Spectrom. Rev.*,
34 2011, **30**, 907–39.
35
36 30 Minagricultura, Insumos agrícolas,
37 http://www.minagri.gob.ar/site/agricultura/contratistas_rurales/index.php
38 (accessed April 2015).
39
40 31 SANCO/12571/2013, Guidance document on analytical quality control and
41 validation procedures for pesticide residues analysis in food and feed, European
42 Commission, Health and Consumer Protection Directorate General
43
44 32. SANCO 825/00, rev. 8.1. 2010, Guidance document on pesticide residue
45 analytical methods, European Commission, Health and Consumer Protection
46 Directorate General
47
48 33. Acidic pesticides using QuEChERS method; [http://quechers.cvua-](http://quechers.cvua-stuttgart.de/pdf/acidicpesticides.pdf)
49 [stuttgart.de/pdf/acidicpesticides.pdf](http://quechers.cvua-stuttgart.de/pdf/acidicpesticides.pdf) (accessed January 2015)
50
51 34. R. Romero-González, M.M. Aguilera-Luiz, P. Plaza-Bolaños, A. Garrido Frenich,
52 J.L. Martínez Vidal, *J. Chromatogr. A.*, 2011, **1218**, 9353–9365.
53
54 35. F.J. Schenck, A.N. Brown, L.V. Podhorniak, A. Parker, M. Reliford, J.W. Wong,
55 *J. AOAC Int.*, 2008, **91**, 422–438.
56
57
58
59
60

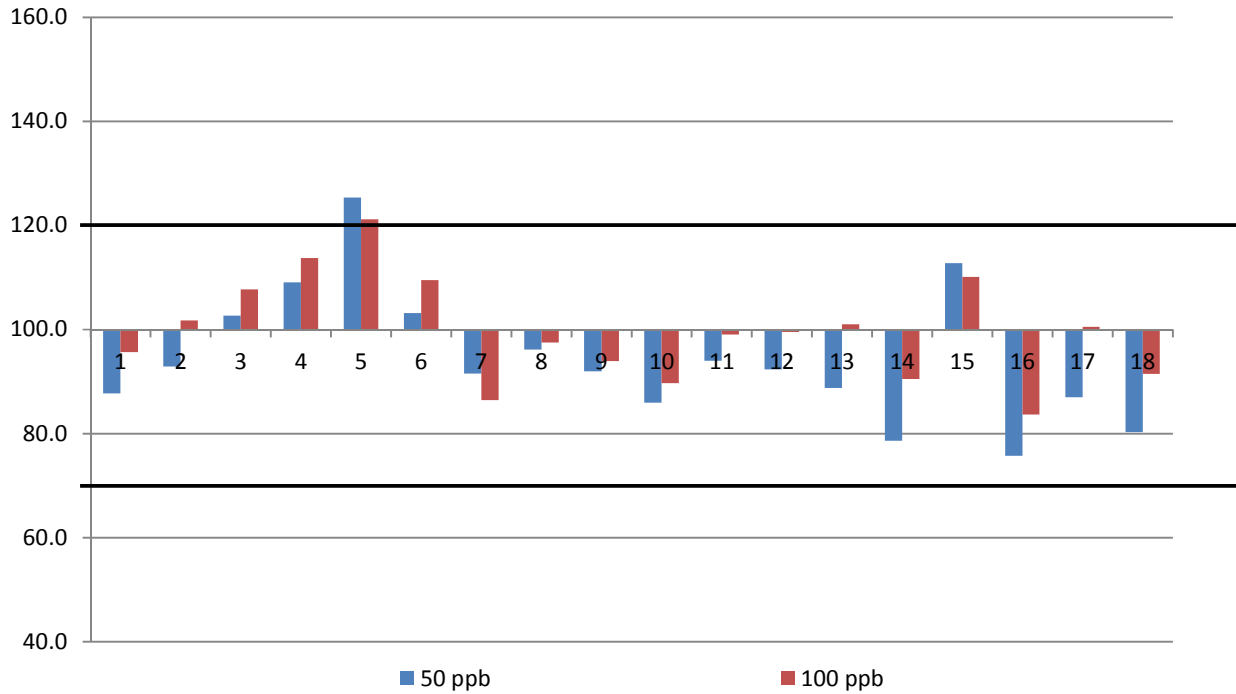
1
2
3
4
5 **Figure captions**
6
7
8

9 **Figure 1.** Matrix effects in the soil used for method validation after application of the
10 recommended analytical procedure
11

12 **Figure 2.** UHPLC–MS/MS chromatograms for selected compounds: (a) blank soil (b)
13 standard 50 µg/L, (c) Soil extract spiked at 50 µg/L.
14
15
16

17 **Figure 3.** UHPLC–MS/MS chromatograms for Pergamino soil, where three pesticides
18 were identified: ametryn (0.09 mg/kg), dimethoate (0.03 mg/kg*), imidacloprid (0.02
19 mg/kg*). Quantification transition (Q), confirmation transition (q)
20
21

22 **estimated concentration from a peak response above S/N=10 (but below the LOQ*
23 *objective of 0.05 mg/kg).*
24
25
26
27
28
29
30
31
32
33
34
35
36
37
38
39
40
41
42
43
44
45
46
47
48
49
50
51
52
53
54
55
56
57
58
59
60



- 1 Picloram
- 2 Imidacloprid
- 3 Dimethoate
- 4 2,4 D
- 5 MCPA
- 6 Carbendazim
- 7 Cyanazine
- 8 Carbofuran
- 9 Carbaryl
- 10 Atrazine
- 11 Ametryn
- 12 Malathion
- 13 Metolachlor
- 14 Epoxiconazole
- 15 Fipronil
- 16 Diazinon
- 17 Chlorpyrifos
- 18 Pendimethalin

Figure 1

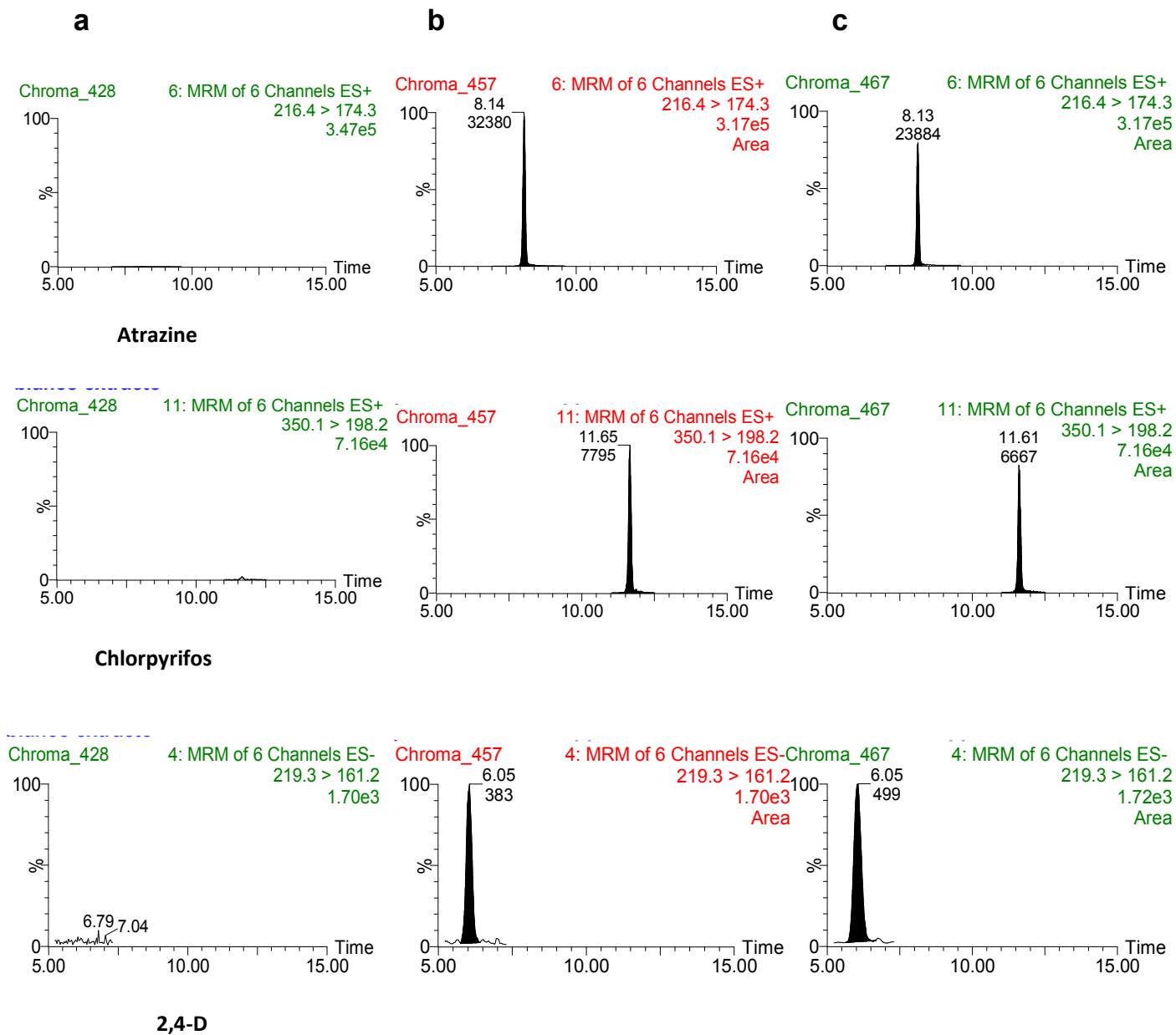


Figure 2

1
2
3
4
5
6
7
8
9
10
11
12
13
14
15
16
17
18
19
20
21
22
23
24
25
26
27
28
29
30
31
32
33
34
35
36
37
38
39
40
41
42
43
44
45
46
47
48
49

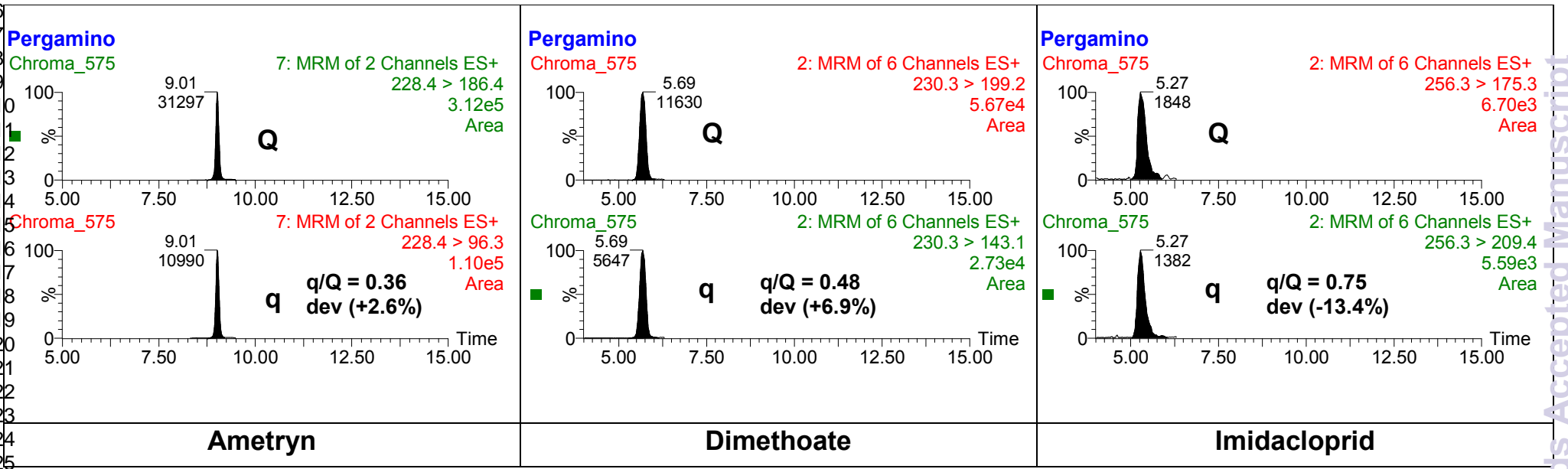


Figure 3

Analytical Methods Accepted Manuscript

Table 1. Mass spectrometric conditions for selected compounds.

No	Compound	Use	Mode	RT (min)	Precursor ion (<i>m/z</i>)	Cone (V)	Collision energy (eV)	Product ion (<i>m/z</i>) ^a	q/Q (RSD)
1	Picloram (PIC)	Herbicide	ES+	3.1	241.2 243.2	25	20 20	195.2 197.2	0.94(0.02)
2	Imidacloprid (IMI)	Insecticide	ES+	5.3	256.3	25	15 15	175.3 209.4	0.87(0.03)
3	Dimethoate (DIM)	Insecticide	ES+	5.7	230.3	15	10 20	199.2 143.1	0.45(0.03)
4	2,4-D	Herbicide	ES-	6.3	219.3 221.3	20	15 15	161.2 163.2	0.84(0.04)
5	MCPA	Herbicide	ES-	6.4	199.3 201.3	20	15 15	141.2 143.2	0.28(0.03)
6	Carbendazim (CAR)	Fungicide	ES+	6.5	192.3	25	15 30	160.2 132.2	0.18(0.01)
7	Cyanazine (CYN)	Herbicide	ES+	7.3	241.4 243.4	30	15 15	214.3 216.3	0.32(0.01)
8	Carbofuran (CRB)	Insecticide	ES+	7.4	222.4	25	20 10	123.2 165.2	0.71(0.04)
9	Carbaryl (CBL)	Insecticide	ES+	7.9	202.4	15	10 25	145.1 117.2	0.16(0.01)
10	Atrazine (ATZ)	Herbicide	ES+	8.3	216.4	35	15 30	174.3 104.2	0.24(0.01)
11	Ametryn (AME)	Herbicide	ES+	9.0	228.4	35	20 25	186.4 96.3	0.35(0.01)
12	Malathion (MAL)	Insecticide	ES+	9.2	331.3	20	10 25	127.1 99.1	0.67(0.10)
13	Metolachlor (MEC)	Herbicide	ES+	9.7	284.4	20	15 25	252.4 176.3	0.48(0.01)
14	Epoxiconazole (EPZ)	Fungicide	ES+	9.8	330.3	30	20 20	121.1 162.2	0.12(0.05)
15	Fipronil (FPN)	Insecticide	ES-	9.9	435	20	15 25	330.0 250.2	0.28(0.03)
16	Diazinon (DZN)	Insecticide	ES+	10.2	305.3	30	20 20	169.2 153.2	0.77(0.12)
17	Chlorpyrifos (CHLOR)	Insecticide	ES+	11.9	350.1	25	20 20	198.2 115.1	0.36(0.02)
18	Pendimethalin (PEN)	Herbicide	ES+	12.0	282.4	15	10 20	212.4 194.3	0.12(0.01)
	<i>Dimethoate-d6</i>		ES+	5.7	236.3	15	10 15	205.2 131.1	0.51(0.03)
	<i>MCPA-d3</i>		ES-	6.4	202.3 204.3	20	15 15	144.2 146.2	0.30(0.06)
	<i>Chlorpyrifos-d10</i>		ES+	11.8	360.1	25	20 20	199.2 115.1	0.09(0.01)

^a The first transition (top) was used for quantification and the second transition (bottom) was used for confirmation.

Table 2. Method validation*. Percentage recoveries and relative standard deviation (in brackets). Limits of detection (LOD)

Compound	0.05 mg/kg	0.5 mg/kg	LOD (µg/kg)
Picloram (PIC)	50 (2)	51 (4)	3.9
Imidacloprid (IMI)	96 (3)	102 (5)	0.8
Dimethoate (DIM)	95 (6)	107 (6)	0.1
2,4 D (2,4D)	120 (10)	100 (6)	1.0
MCPA (MCPA)**	134 (7)**	115 (11)**	0.9
Carbendazim (CAR)	90 (4)	94 (5)	3.0
Cyanazine (CZN)	74 (4)	85 (4)	0.1
Carbofuran (CRB)	98 (5)	93 (9)	0.1
Carbaryl (CBL)	138 (3)	107 (5)	0.1
Atrazine (ATZ)	86 (6)	91 (4)	0.1
Ametryn (AME)	100 (6)	100 (6)	0.2
Malathion (MAL)	99 (6)	99 (5)	0.1
Metolachlor (MEL)	101 (5)	99 (7)	0.2
Epoxiconazole (EPZ)	78 (3)	84 (6)	0.2
Fipronil (FPN)	114 (5)	112 (4)	0.3
Diazinon (DZN)	86 (8)	78 (7)	0.4
Chlorpyrifos (CHLOR)	91 (6)	91 (5)	0.3
Pendimethalin (PEN)	83 (5)	86 (8)	0.6

* Data corresponding to a soil sample collected from Balcarce

** Recoveries for MCPA were 95% (0.05 mg/kg) and 102% (0.5 mg/kg) when MCPA-d3 was used as ILIS

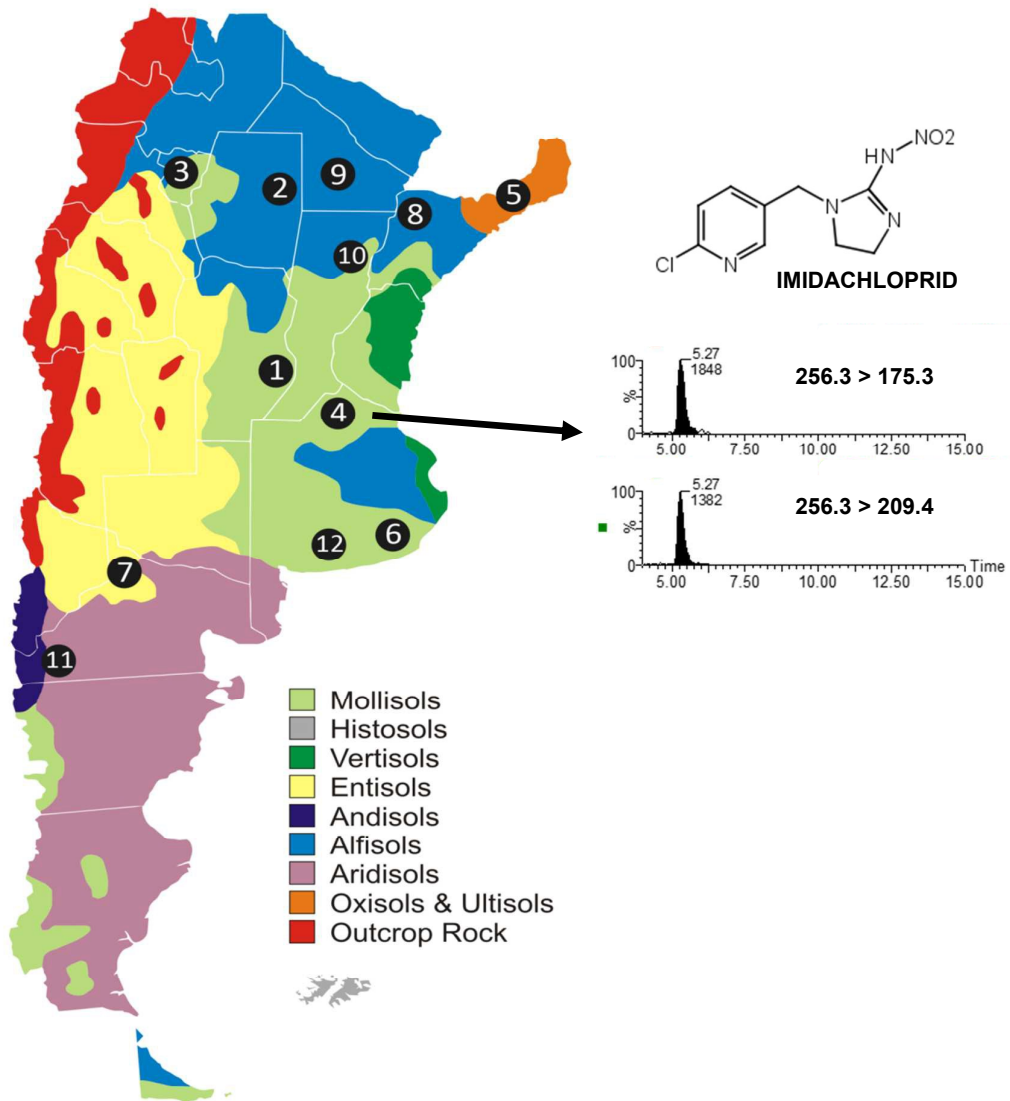
Table 3. Recovery for Quality Controls prepared from different soil samples

COMPOUND	Analysis of eleven soil samples*		QC LOQ (n=3)**		QC 10xLOQ (n=3)**	
	QC Rec	RSD	QC Rec	RSD	QC Rec	RSD
Picloram	60	16	47	4.6	47	1.0
Imidacloprid	98	6.1	88	2.8	94	1.9
Dimethoate	103	4.4	92	8.3	95	1.6
2,4-D	105	7.7	117	7.9	102	1.3
MCPA	111	9.2	132	2.5	110	1.7
Carbendazim	104	8.4	92	1.6	93	2.7
Cyanazine	84	7.0	65	5.8	74	2.1
Carbofuran	99	7.2	92	9.3	92	0.2
Carbaryl	105	4.3	164	10	98	0.0
Atrazine	88	7.7	66	4.1	74	0.9
Ametryn	98	4.6	92	3.1	90	0.4
Malathion	107	7.5	96	7.3	105	0.8
Metolachlor	100	5.7	89	1.4	88	0.3
Epoxiconazole	88	8.1	65	7.5	71	0.1
Fipronil	110	13	113	1.2	103	0.7
Diazinon	76	13	63	6.9	63	6.0
Chlorpyrifos	91	5.8	79	6.0	79	1.0
Pendimethalin	86	6.7	72	4.3	70	0.1

* Average recovery and relative standard deviation for 11 QCs prepared from different soils (0.5 mg/kg fortification level)

**Average recovery and relative standard deviation for the QCs prepared from the soil used in validation experiments (n=3) at 0.05 mg/kg (LOQ) and 0.5 mg/kg (10xLOQ) fortification level

GRAPHICAL ABSTRACT



1
2
3
4
5
6
7
8
9
10
11
12
13
14
15
16
17
18
19
20
21
22
23
24
25
26
27
28
29
30
31
32
33
34
35
36
37
38
39
40
41
42
43
44
45
46
47
48
49
50
51
52
53
54
55
56
57
58
59
60