

# Analytical Methods

Accepted Manuscript



This is an *Accepted Manuscript*, which has been through the Royal Society of Chemistry peer review process and has been accepted for publication.

*Accepted Manuscripts* are published online shortly after acceptance, before technical editing, formatting and proof reading. Using this free service, authors can make their results available to the community, in citable form, before we publish the edited article. We will replace this *Accepted Manuscript* with the edited and formatted *Advance Article* as soon as it is available.

You can find more information about *Accepted Manuscripts* in the [Information for Authors](#).

Please note that technical editing may introduce minor changes to the text and/or graphics, which may alter content. The journal's standard [Terms & Conditions](#) and the [Ethical guidelines](#) still apply. In no event shall the Royal Society of Chemistry be held responsible for any errors or omissions in this *Accepted Manuscript* or any consequences arising from the use of any information it contains.

Cite this: DOI: 10.1039/c0xx00000x

www.rsc.org/xxxxxx

ARTICLE TYPE

## Quick and robust method for trace determination of MeHg in rice and rice products without derivatisation

C.-C. Brombach<sup>a</sup>, M.F. Ezzeldin<sup>a,b</sup>, B. Chen<sup>c</sup>, W.T. Corns<sup>c</sup>, J. Feldmann<sup>a</sup>, E.M. Krupp<sup>\*a</sup>

Received (in XXX, XXX) Xth XXXXXXXXXX 20XX, Accepted Xth XXXXXXXXXX 20XX

DOI: 10.1039/b000000x

### Abstract

Recent studies of Methylmercury (MeHg) in rice have shown that rice grown on mercury contaminated soil contributes to the human MeHg intake similar to a fish diet. Trace levels of MeHg in biological samples are often determined via a complex multi-stage process following EPA method 1630. We developed a simple and cost effective method suited for food quality monitoring based on a simple sample preparation procedure and the subsequent analysis of the sample by online preconcentration - high performance liquid chromatography-cold vapor atomic fluorescence spectrometry (SPE-HPLC-CV-AFS). The reliability of this method for MeHg in rice and rice products in the low ppb range was investigated for 4 different rice product samples. At present, no CRM for MeHg in rice or rice products is available. Therefore we cross-validated our method against standard addition and species-specific isotope dilution gas chromatography inductively coupled plasma mass spectrometry (SSID-GC-ICP-MS), which showed no significant difference versus the external calibration with SPE-HPLC-CV-AFS. Potential species interconversion during sample preparation and measurement was ruled out by using a spike of isotopically enriched inorganic mercury. The preconcentration HPLC-CV-AFS developed in our work has proven to be a robust, fast, cost efficient, competitive and reliable method for MeHg speciation in rice and rice products with a limit of detection of 0.12  $\mu\text{g kg}^{-1}$  and a reproducibility comparable to the SS-ID-GC-ICPMS method which is sufficient for the determination of MeHg concentration in the four market rice samples. The concentrations of MeHg ranged from 1.6 to 2.7  $\mu\text{g kg}^{-1}$ .

### Introduction

Rice is a staple food and provides 20 % of the world's dietary energy supply.<sup>1</sup> Rice grains can however accumulate methylmercury (MeHg) from paddy fields, and Feng et al. could show that rice grown in mercury contaminated areas has a similar mercury contribution as a moderate fish diet.<sup>2</sup> The precise and accurate determination of trace amounts of MeHg in rice requires a method that fully liberates the MeHg bound in the rice grain, while conserving the analyte speciation.

MeHg concentrations are usually in the low ppb range, and only in contaminated areas can MeHg amount to  $> 100 \mu\text{g kg}^{-1}$ , therefore, a speciation method must be sensitive and selective.<sup>3</sup>

An established method for MeHg analysis in rice is described by Liang et al.<sup>4</sup> The protocol involves the digestion of rice (up to 0.5 g) in KOH/methanol, acidification, extraction into dichloromethane and back-extraction into water. Subsequently, MeHg is ethylated by adding sodium tetraethylborate and the ethylated MeHg purged onto Tenax traps and finally thermally desorbed for analysis via GC-AFS, following the US-EPA method 1630.<sup>5-7</sup>

Horvat et al. used a leaching process with KBr/H<sub>2</sub>SO<sub>4</sub> for the extraction of MeHg from rice followed by an extraction of the MeHgBr into toluene. A back-extraction of MeHgBr into aqueous L-cysteine solution and a final extraction into benzene

concludes the preparation. Analysis is done by direct injection of the benzene solution into GC-ECD (gas chromatography with electron capture detector).<sup>8</sup>

These established methods all require a sequence of several time-consuming steps and make the mercury speciation analysis of rice rather cumbersome.

MeHg is a well-known neurotoxin, and limits for MeHg consumption were defined, e.g. by the European Food Safety Authority (EFSA): in 2012, a tolerable weekly intake (TWI) of 1.3  $\mu\text{g kg}^{-1}$  per body weight was established for MeHg, while the TWI for inorganic mercury was set to 4  $\mu\text{g kg}^{-1}$  per body weight.<sup>9</sup> This mirrors the growing interest to determine the Hg speciation in other food commodities, especially rice: China was the first country to set a limit for Hg concentration in rice of 20  $\mu\text{g kg}^{-1}$ , and other countries may follow this example and thus Hg analysis in rice may soon be imperative for the import/export of rice.<sup>10</sup>

In this study, we focused on the development of a trace level ( $< 5 \mu\text{g kg}^{-1}$  MeHg) method, which is robust, cost effective, reliable and accurate as well as easy to use for food safety monitoring.

This method will be fit to be used on a large scale, e.g. in food basket studies of MeHg in rice and rice products. The basis for this method is a HPLC-CV-AFS approach that we described in earlier studies<sup>11,12</sup>, which has proven to be robust, simple and cost-effective for water, sediment, and biological tissues (e.g.

Seaweed IAEA-140, dogfish muscle DORM-3, dogfish liver DOLT-2 and DOLT-4 and Lobster hepatopancreas TORT-2). However, this method needed to be modified for the analysis of rice, mainly concerning the sample preparation. The low concentrations made it necessary to use relatively high sample amounts around 300 mg, which yielded a highly viscous digest, which could not be injected into the AFS system. A second extraction step was therefore inserted as described below in the procedures. Furthermore, the sample contained a high amount of organic matrix, causing extensive foaming in the gas-liquid separator (GLS). This was suppressed by using a mechanical device within the GLS, in the form of a plastic ring around the glass tube through which the purge gas is injected; the device can be seen in section A of the supporting information, Figure S1. The main obstacle is however the validation of this method; while numerous certified reference materials (CRM) are available for a variety of matrices, there is none for rice, rice products or other cereals. Therefore, it is not possible to determine the accuracy of the analytical method for rice. Here, we cross-validated the SPE-HPLC-CV-AFS method with SS-ID-GC-ICPMS, and used standard addition as well as Hg<sup>2+</sup> isotope spikes into the rice matrix to determine any artificial formation or disintegration of MeHg during sample preparation and analysis.

## Experimental

### Standards, Reagents and Samples

10,000 mg L<sup>-1</sup> MeHg (as Hg) stock solution was prepared by dissolving methylmercury chloride (Sigma Aldrich, UK) in methanol. Further dilutions were carried out in 0.3 M HCl to a intermediate standard of 1 mg L<sup>-1</sup>. This intermediate standard was diluted daily to a 1 µg L<sup>-1</sup> MeHg solution, from which the external calibration standards (2.5, 5, 10 and 20 ng L<sup>-1</sup>) were prepared in 0.12 M HCl (AnalR grade, VWR, UK).

Isotopically enriched Me<sup>201</sup>Hg was prepared according to literature from <sup>201</sup>HgO<sup>13</sup> and stock solutions of 10 mg L<sup>-1</sup> were stored at -20 °C prior to use. This solution was further diluted for species specific isotope dilution.

<sup>199</sup>Hg solution was prepared by dissolving <sup>199</sup>HgO (Oak Ridge National Lab, USA) in 1.5 M hydrochloric acid and further dilutions were carried out in 1.5 M HCl for the experiments.

10 mg L<sup>-1</sup> inorganic mercury standard was purchased from AccuStandard® (AccuTrace™ Reference Standard, USA). Dilutions were carried out in 0.3 M HCl to a stock standard of 1 mg L<sup>-1</sup>. From this solution, a daily intermediate standard of 10 µg L<sup>-1</sup> was prepared which was the basis of the calibration standards of 10, 20, 40 and 60 ng L<sup>-1</sup> for the T-Hg analysis.

Double distilled water was produced by an Aquatron water still A4000D (Bibby Scientific Limited, Stone, UK).

Methanol (AnalR grade, VWR, UK) and ammonium pyrrolidine dithiocarbamate (~99%, Sigma Aldrich, UK) are used for the preparation of the mobile phase for HPLC separations. 0.01 M Titrisol® bromine solution (Merck, Darmstadt, Germany) and 1.2 M HCl (AnalR grade, VWR, UK) were used as oxidants and 2% (m/v) tin(II)chloride (tin(II)chloride dihydrate (98%; Alfa Aesear, UK) and 1.2 M HCl (v/v) (AnalR grade, VWR, UK) in

double-distilled water for the reductant solution. The preconcentration material is a mixture of thiol and thiourea bound to silica, and is commercially available (PS Analytical, UK; PSA L820K005); preconcentration material is replaced after 100 runs.

Tetramethylammonium hydroxide as a 25 % (m/v) solution (99.9999% (metals basis), Alfa Aesear, UK) is used for digestion of the rice sample and 37 % (v/v) HCl (AnalR grade, VWR, UK) is used for the second digestion step.

0.5 M acetic acid-acetate buffer at pH 3.9 is prepared from acetic acid (100%, HiPerSolv® Chromanorm, VWR, UK) and the pH adjusted with NaOH (Laboratory reagent grade, Fluka Analytical, UK). Sodium tetrapropylborate (Chemos, Germany) is used for propylation of the mercury species and 2,2,4-trimethylpentane (Chromasolv® Plus, for HPLC, ≥ 99.5%, Sigma Aldrich, UK) is used for extraction after propylation.

Digestion for total Hg is performed with 70 % nitric acid (PrimarPlus-Trace analysis grade, Fisher Scientific, UK).

Iso-Disc™ PTFE 25-4 Filters (25 mm × 0.45 µm, Sigma Aldrich, UK) are used for filtration of the digested rice samples.

For consistency, all MeHg concentrations are reported as µg kg<sup>-1</sup> Hg.

### Instrumentation

**GC-ICP-MS.** A gas chromatograph (Agilent 6980 GC, Agilent Technologies, USA) is coupled with an in-house built heated transfer-line to an ICP-MS (Agilent 7500c ICP-MS, Agilent Technologies, USA), allowing the introduction of a liquid internal standard mixed to the GC effluent via a cyclonic spray chamber. The detailed set-up of the coupling is described elsewhere.<sup>11</sup>

**SPE-HPLC-CV-AFS.** The HPLC-AFS system used in this study has been described in detail in recent publications by Brombach et al.<sup>11, 12</sup> Briefly, the HPLC-preconcentration system can be described as an online solid phase extraction (SPE) consists of a 6-port valve where the sample loop is replaced by an HPLC column (Empty HPLC column, 2.1 × 30 mm, 2 µm frits, (Thames Restek, UK)) filled with a thiol/thiourea silica material (PSA L820K005; particle size 40-63 µm). 35 mL of the acidified sample is pumped across the preconcentration column with a HPLC pump at a speed of 5 mL/min (HPLC 1: Spectra-Physics Analytical P100, UK) and the mercury species are retained on the preconcentration material. The 6-port valve is switched and a mobile phase (1.5 mM ammonium pyrrolidine dithiocarbamate in 75 % (v/v) methanol), pumped by a second HPLC pump (HPLC 2: Kontron 420, Kontron Instruments, UK), elutes the mercury species and separates them on a C8 column (Eclipse XDB C8 (4.6 × 150 mm, 5 µm), Agilent, USA). During elution, the valve is turned again and the next sample can be loaded onto the preconcentration column; thus the sample throughput is four per hour. The post column treatment consists of the addition of bromine as oxidant and UV-light to support the conversion of organic mercury to divalent mercury. Divalent mercury is reduced with acidic tin(II)chloride, and Hg<sup>0</sup> separated from the solution in the gas-liquid-separator. A PSA Millennium Merlin atomic fluorescence spectrometric detector (P.S. Analytical Ltd.,

Orpington, UK) is used for Hg quantification. A modification of the gas-liquid-separator (see **Figure S1** in the supporting information) is necessary in order to get a clean chromatogram (Figure 1).

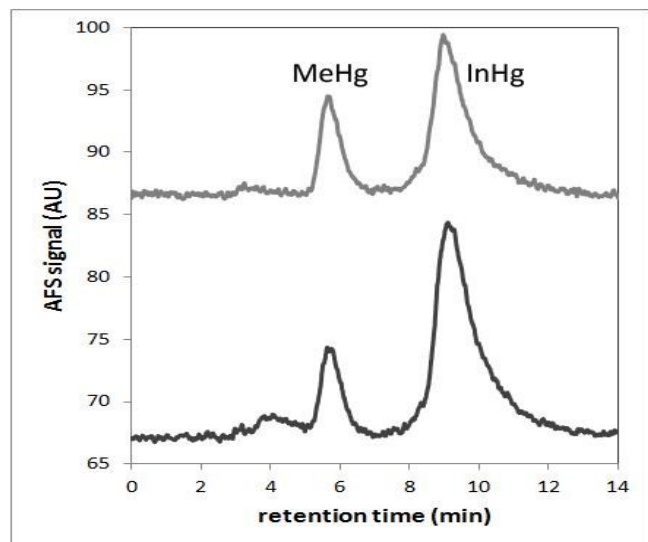


Figure 1: HPLC-CV-AFS chromatogram for rice 2 containing  $1.56 \mu\text{g g}^{-1}$  MeHg (dark grey) and  $5 \text{ ng L}^{-1}$  MeHg standard (light grey, shifted by 20 units), corresponding to  $0.197 \text{ ng MeHg}$  (as Hg) for the rice sample and  $0.175 \text{ ng MeHg}$  (as Hg) in the standard.

### Microwave digestion

A Mars 5 microwave (CEM Corporation, USA) was used for the extraction/digestion of the samples. A closed vessel digest using PTFE vessels (XP-1500 plus, CEM Corporation, USA) was used for T-Hg analysis, and an open vessel digest extraction was performed in glass vials (22 mL, Supelco, USA) for mercury speciation.

**Centrifugation** of samples was achieved by using a Micro Centaur centrifuge (MSE, UK) at  $13226\text{g}$  ( $13000 \text{ rpm}$ ) for 10 min, or an ALC 4218 centrifuge (ALC International S.R.L., Italy) at  $1650\text{g}$  ( $3500 \text{ rpm}$ ) for 10 min.

### Procedures

**Sample preparation.** Rice samples were ground into a fine powder with a Coffee grinder (F203 Grinder, Krups, Germany) and stored in closed glass vessels at room temperature.

Rice flour standard reference material 1568a (NIST, USA) is specified for  $5.8 \pm 0.5 \mu\text{g kg}^{-1}$  T-Hg and was used for quality assurance of the T-Hg analysis.

**Sample preparation for T-Hg analysis.**  $0.5 \text{ g}$  rice was accurately weighed and pre-digested overnight with  $7.5 \text{ mL } 70\% \text{ HNO}_3$  in PTFE vessels for pressurised microwave digestion and then microwaved for 1h at  $140^\circ\text{C}$ .  $2.5 \text{ mL}$  of the digest was taken and remaining nitrous oxides removed and diluted to  $20 \text{ mL}$ . T-Hg in the digested samples was analysed using CV-AFS (PSA

Millennium Merlin, PSA 10.025, PS Analytical, UK).  $2\%$  (m/v)  $\text{SnCl}_2$  in  $1.2 \text{ M HCl}$  was used as a reductant with a flow-rate of  $5 \text{ mL min}^{-1}$  and a sample flow-rate of  $10 \text{ mL min}^{-1}$ .

**Sample preparation for MeHg analysis by SPE-HPLC-CV-AFS.** Approx.  $0.3 \text{ g}$  rice was microwave extracted with  $3 \text{ mL TMAH}$  ( $25\%$  (m/v)) for 20 min at  $55^\circ\text{C}$  and 20 min at  $60^\circ\text{C}$  @  $1600\text{W}$  in open vessels. The digest was allowed to cool down and  $2 \text{ mL HCl}$  ( $37\%$ ) carefully added. After shaking, the digest was heated again in the microwave for 20 min at  $55^\circ\text{C}$  and 20 min at  $60^\circ\text{C}$ . The suspension was centrifuged at  $13,226\text{g}$  ( $13,000 \text{ rpm}$ ) for 10 mins and the supernatant filtered through  $0.45 \mu\text{m}$  filter discs. Approximately  $60\%$  of the clear digest solution was aliquoted into a clean vessel, and was topped up to  $50 \text{ mL}$ , of which  $35 \text{ mL}$  were analyzed by SPE-HPLC-CV-AFS. All dilution factors were calculated by weight.

**Sample preparation for MeHg analysis by SS-ID-ICP-MS.** Approx.  $0.6 \text{ g}$  rice was extracted with  $6 \text{ mL } 25\%$  (m/v) TMAH in the microwave (open vessel) for 20 min at  $55^\circ\text{C}$  and 20 min at  $60^\circ\text{C}$ .  $1.380 \text{ mL HCl}$  ( $37\%$ ) was added to the cooled digest to adjust the pH to a range between 4 and 6, and re-digested in the microwave for 20 min at  $55^\circ\text{C}$  and 20 min at  $60^\circ\text{C}$ . The suspension was centrifuged at  $13,226 \text{ g}$  ( $13,000 \text{ rpm}$ ) for 10 min, and the supernatant spiked with  $\text{Me}^{201}\text{Hg}^+$  and left standing for 10 min for equilibration, buffered with  $5 \text{ mL } 0.5 \text{ M}$  acetic acid / sodium acetate (pH 3.9) and overlaid with  $1 \text{ mL } 2,2,4$ -trimethylpentane.  $1 \text{ mL } 1\%$  (m/v) sodium tetra(n-propyl)borate was then added to the solution and the mixture shaken for 10 min to extract the derivatized mercury species into the organic layer. The mixture was centrifuged at  $1650\text{g}$  ( $3500 \text{ rpm}$ ) to improve phase separation and approximately  $0.5 \text{ mL}$  of the organic layer was recovered and transferred into autosampler vials. The organic solvent was reduced with a stream of air to approx.  $0.02 - 0.05 \text{ mL}$ , and  $2 \mu\text{L}$  injected into the GC-ICP-MS system.

### Samples

For the method development and validation, four different rice samples were used which were two rice grain samples (sample 1 and 4) and two baby rice samples (sample 2 and 3), purchased in local shops in Aberdeen, UK.

### Validation approach of the SPE-HPLC-CV-AFS method for MeHg in rice samples

Validation of a new method is usually depending on certified reference materials, which can give reassurance that the values obtained are accurate and sufficiently precise for the purpose. For MeHg determination in rice, there is however no CRM available. Therefore, we used different orthogonal analytical strategies and methods, which can in turn be used to cross-validate the results obtained with the SPE-HPLC-CV-AFS mercury speciation method.



1 Firstly, we present data obtained with SPE-HPLC-CV-AFS using  
 2 an external calibration approach. For one sample, a standard  
 3 addition approach (spiking into the original sample) was used to  
 4 determine any matrix effects or possible MeHg degradation that  
 5 may occur. Secondly, we used an orthogonal analytical method  
 6 based on species specific isotope dilution, using GC-ICPMS  
 7 analysis (SS-ID-GC-ICPMS). These results should be able to  
 8 detect any bias compared to the new method. Thirdly, on one  
 9 sample, we used an isotopically enriched inorganic Hg spike  
 10 ( $^{199}\text{Hg}^{2+}$ ) at 20-fold excess to determine any artificial MeHg  
 11 formation from inorganic Hg in the sample. These different  
 12 approaches are described and evaluated below. Finally, four  
 13 different rice samples were submitted to each HPLC-CV-AFS  
 14 and SS-IDMS-GC-ICPMS for comparison. In addition, T-Hg was  
 15 determined for all samples. Below, the different analytical  
 16 approaches along with their results are shown and discussed.

## 21 Results and Discussion

### 24 Development of a new sample preparation approach for MeHg analysis in rice matrix

25 Sample preparation for MeHg in biological matrices, especially  
 26 fish, is often accomplished using an alkaline digestion with  
 27 TMAH.<sup>14</sup> This procedure has proven to destroy the organic tissue  
 28 while keeping the MeHg species intact. Rice is however a matrix  
 29 with very dense organic matter, and with our initial approach of  
 30 using TMAH it was found that this digestion alone did not  
 31 destroy the matrix sufficiently. When digesting rice grain in a  
 32 proportion of 1:10 (0.3 g rice to 3 mL TMAH), the digest  
 33 obtained was very viscous and not amenable to direct analysis via  
 34 HPLC-CV-AFS. We added a second digestion step which  
 35 involved the addition of HCl, as described above in the sample  
 36 preparation paragraph which allowed a leaching of the mercury  
 37 species from the organic digest. The HCl leachates can then  
 38 directly be injected into the SPE-HPLC-CV-AFS system for  
 39 analysis after filtration and dilution.

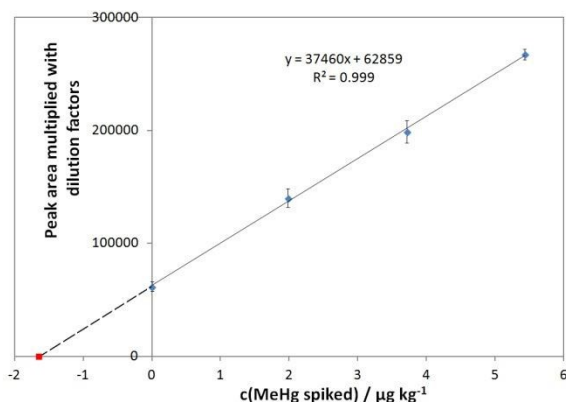
### 42 Determination of T-Hg in Rice

43 T-Hg was determined with CV-AFS after closed vessel  
 44 microwave digestion, and measured using straightforward CV-  
 45 AFS. Additional to the Hg speciation approaches, T-Hg was  
 46 determined in each sample to assess the overall mass balance.  
 47 This was typically done by subtraction of the MeHg  
 48 concentration from the T-Hg value. Validation of the T-Hg  
 49 measurement was performed using rice flour standard reference  
 50 material 1568a (NIST, USA), specified for  $5.8 \pm 0.5 \mu\text{g kg}^{-1}$  T-  
 51 Hg. T-Hg was determined with a recovery of  $98.3 \pm 8.8 \%$  in the  
 52 standard reference material. T-Hg was measured for all samples  
 53 prior to MeHg speciation. The concentration of T-Hg varied  
 54 between  $1.7\text{-}3.3 \mu\text{g kg}^{-1}$ . The three replicates from the four rice  
 55 samples varied between 2.0-14.7 % for the relative standard  
 56 deviation (RSD).

### 55 Direct MeHg analysis in rice with SPE-HPLC-CV-AFS using an external calibration

56 The external calibration for MeHg was produced in a  
 57 concentration range of 0 to  $20 \text{ ng L}^{-1}$ , with  $2.5 \text{ ng L}^{-1}$  as the  
 58 lowest standard. Linear correlation factors of typically  $R^2 > 0.998$   
 59 are obtained with a preconcentration volume of 35 mL, resulting  
 60 in a limit of detection of  $0.4 \text{ ng L}^{-1}$ , or  $0.014 \text{ ng MeHg absolut}$ .  
 61 (Figure S2a in the supporting information shows overlaid  
 62 chromatograms for the calibration of MeHg from 0 to  $20 \text{ ng L}^{-1}$ ,  
 63 while Figure S2b shows a typical linear calibration). The results  
 64 for the four rice samples are shown in table 1 and the  
 65 concentrations vary between  $1.56$  and  $2.69 \mu\text{g kg}^{-1}$  MeHg in the  
 66 market rice samples. The relative standard deviation for three  
 67 replicates varied between 5.2-16.7 % and seem to be independent  
 68 of the MeHg concentration, which may be attributed to the  
 69 concentrations being close to the limit of quantification.

70 **Standard addition approach for MeHg analysis in Rice.** 300  
 71 mg of baby-food rice sample 2 was spiked with 50, 100 and 150  
 72  $\mu\text{L}$  of a  $10 \mu\text{g L}^{-1}$  MeHg standard solution and digested according  
 73 to the protocol for analysis via preconcentration HPLC-CV-AFS.  
 74 The measured peak areas for the different spiked samples were  
 75 plotted against the added concentration of MeHg and the  
 76 concentration of MeHg in solution calculated. The concentration  
 77 of MeHg in the original sample was calculated by applying the  
 78 dilution factors. A good linearity with a correlation coefficient of  
 79 0.9996 could be achieved (see Figure 2). The concentration  
 80 determined with the external calibration is  $1.56 \pm 0.16 \mu\text{g kg}^{-1}$   
 81 ( $n=3$  error of 10.6 % RSD from three biological replicates) for  
 82 MeHg, compared to a value of  $1.67 \pm 0.08 \mu\text{g kg}^{-1}$  ( $n=3$  for each  
 83 spiked concentration, 4.8 % RSD) with standard addition (section  
 84 C in the supporting information shows the calculation of SD for  
 85 the standard addition experiment). The results for rice sample 2  
 86 determined with standard addition and external calibration  
 87 overlap within the range of the standard deviation, therefore we  
 88 can exclude any significant matrix effect during the digestion  
 89 procedure (t-test,  $p > 0.05$ ).



95 Figure 2: Standard addition for rice 2; peak areas were multiplied with dilution factors to show concentrations as  $\mu\text{g kg}^{-1}$  original rice sample. (error bars = 1 SD,  $n=3$  analytical replicates). The dashed line is an extrapolation of the linear trendline for the data

points and the red point marks the concentration of MeHg in rice  
2.

### SS-ID-GC-ICPMS approach for MeHg analysis in Rice

SS-ID-GC-ICPMS was used as the *gold standard* method for the speciation of mercury, but proved to be less sensitive than the AFS method, with peaks hardly distinguishable in the GC-ICPMS chromatogram. Doubling of sample mass and reduction of the organic phase (approx. 500  $\mu\text{L}$  2,2,4-trimethylpentane) to ~ 20 - 50  $\mu\text{L}$  of which only 2  $\mu\text{L}$  were injected into a GC-ICP-MS yielded substantial peaks for both MeHg (as MeHgPr) and  $\text{Hg}^{2+}$  (as  $\text{Pr}_2\text{Hg}$ ), as shown in **Figure S3**. The detection limits are around 1  $\mu\text{g L}^{-1}$ , however for the precise peak integration and isotope ratio determination, a higher concentration is often required. The absolute amounts injected into the GC-ICPMS were rather close to the LOD, which is reflected in relatively high SDs for MeHg determination of a minimum of 7.7 % RSD. The results for the four rice samples determined by GC-ICPMS are quoted in **table 2**. The precision for the four rice samples expressed in one SD ( $n=3$ ) varied from 7.7 - 15.9% RSD, which may reflect the heterogeneous nature of MeHg in the rice, since those rice samples with lower RSD gave also lower RSD for the SPE-HPLC-CV-AFS method and for T-Hg.

In order to evaluate possible degradation of MeHg during the digestion step, for one rice sample (rice 1) the isotopically enriched MeHg spike was added prior digestion. The result obtained by spiking into the sample gave a MeHg concentration of  $2.73 \pm 0.24 \mu\text{g kg}^{-1}$ , compared to  $2.61 \pm 0.25 \mu\text{g kg}^{-1}$  when the spike was added into the extract, which is not significantly different. Subsequently, all samples were therefore spiked after digestion.

SS-ID-GC-ICP-MS requires a substantial amount of sample preparation after digestion. This involves that the sample is digested, spiked with isotopically enriched MeHg, centrifuged and filtered, buffered, pH adjusted to 3.9, overlaid with isooctane (2,2,4-trimethylpentane), propylation reagent added and shaken manually for 10 mins. After the isolation of the organic layer, a time-consuming step of solvent evaporation is necessary to ensure that the isotope signals are sufficiently high to perform reproducible and precise peak integration. In contrast, online SPE-HPLC-CV-AFS requires only digestion, centrifugation, filtering and dilution prior to analysis and no derivatisation is necessary.

### Comparison of results obtained for the different quantification approaches

Table 1 shows a comparison of five rice samples which were analysed with SPE-HPLC-CV-AFS and SSID-GC-ICPMS. The third column shows the T-Hg values with T-Hg usually being higher than MeHg, however in sample 3, MeHg was determined to be higher than T-Hg. The excess is approx. 10 %, which lies within the determination uncertainty. MeHg concentrations have been reported as high as 95% of T-Hg. Here, the rice samples vary between 66 and 110 % of MeHg. The higher MeHg %age in samples 2 and 3 may be associated to additional processing, as these samples are baby-rice products. These processes may

involve washing or cooking in which some  $\text{Hg}^{2+}$  might be lost opposed to MeHg which might be bound differently, e.g. in proteins. Thus, inorganic Hg might be lost during this process, leading to higher MeHg %ages. Earlier (unpublished) work in our group suggested that  $\text{Hg}^{2+}$  can be partly removed by washing; this will be further investigated.

A paired T-test of the results for preconcentration HPLC-CV-AFS vs SSIDMS-GC-ICP-MS yielded  $p=0.5581$  ( $n=4$ ), showing that the two methods give data which are not significantly different.

Table 1: Concentration of MeHg and T-Hg determined in four different rice samples; MeHg was determined with two orthogonal analytical methods ( $n=3$ , error as one SD and expressed in % RSD).

Rice sample	c(MeHg) / $\mu\text{g kg}^{-1}$ (SPE-HPLC-CV-AFS)	c(MeHg) / $\mu\text{g kg}^{-1}$ (SSID-GC-ICPMS)	c(T-Hg) / $\mu\text{g kg}^{-1}$ (CV-AFS)
1	$2.69 \pm 0.26$ (9.5 %)	$2.61 \pm 0.25$ (9.7 %)	$3.26 \pm 0.20$ (6.3 %)
2	$1.56 \pm 0.17$ (10.6 %)	$1.62 \pm 0.26$ (15.9 %)	$1.70 \pm 0.22$ (13.2 %)
3	$2.09 \pm 0.11$ (5.2 %)	$2.14 \pm 0.17$ (7.7 %)	$1.90 \pm 0.04$ (2.0 %)
4	$1.58 \pm 0.26$ (16.7 %)	$1.64 \pm 0.18$ (10.7 %)	$2.39 \pm 0.45$ (14.7 %)

### Enriched isotope spiking for determination of MeHg artifact formation during the digestion process

It is a well established fact that some sample digestion and preparation methods induce artificial MeHg formation from inorganic mercury,<sup>15, 16</sup> leading to an overestimation of MeHg in the sample. This was first discovered in the late 1990s for water vapor distillation applied to sediments and soil samples, which are usually very low in MeHg with a ratio of ~ 1:100 compared to inorganic Hg.<sup>16</sup> This effect was attributed to organic matter in the soil, leading to abiotic MeHg formation during sample preparation. The rice matrix is of course 100% organic, and TMAH cannot break the matrix down completely, as described above.

Therefore we used an enriched isotope spike of  $^{199}\text{Hg}^{2+}$  to reveal any artificial MeHg formation by comparison of the natural Hg isotope ratios with the isotope ratio determined on the MeHg signal determined with GC-ICPMS. For this,  $^{199}\text{Hg}^{2+}$  enriched at 98 % was spiked into the sample in 20-fold excess of the total mercury concentrations, and the resulting MeHg isotope ratios were calculated from the MeHg peak.

Table 2: Rice sample 1 spiked with  $^{199}\text{Hg}^{2+}$ ;  $^{199}\text{Hg}$  spike concentration at 20 fold excess over T-Hg.

	Hg Ratio for MeHg (n=3)	natural ratio
$^{199}\text{Hg} / ^{200}\text{Hg}$	$0.748 \pm 0.042$	0.727
$^{199}\text{Hg} / ^{201}\text{Hg}$	$1.280 \pm 0.108$	1.272
$^{199}\text{Hg} / ^{202}\text{Hg}$	$0.572 \pm 0.038$	0.563
$^{200}\text{Hg} / ^{201}\text{Hg}$	$1.687 \pm 0.149$	1.75
$^{200}\text{Hg} / ^{202}\text{Hg}$	$0.753 \pm 0.050$	0.775
$^{201}\text{Hg} / ^{202}\text{Hg}$	$0.442 \pm 0.037$	0.443

**Table 2** shows the isotope ratios of the MeHg peak from the rice sample spiked with inorganic  $^{199}\text{Hg}$ . The hypothesis is that due to the excessive  $\text{Hg}^{2+}$  spike, the isotope ratios involving  $^{199}\text{Hg}$  would dramatically change from the natural isotope ratios. This however cannot be seen, as the resulting isotope ratios do not differ significantly from the natural ones. As a comparison also the isotope ratios of Hg which should not be changed have been listed to show the analytical error. Hence, artificial MeHg formation is not observed during the digestion procedure of the rice samples, and neither during derivatisation and measurement, which confirms the occurrence of the neurotoxin MeHg in market rice including baby rice samples in the  $\mu\text{g kg}^{-1}$  range.

Online SPE-HPLC-CV-AFS is a simple and reliable method for the speciation of MeHg in rice and could be used as a standard method in laboratories. The sample preparation is limited to centrifugation, filtering and dilution after digestion, which can be done in an open vessel microwave, saving time and material cost. Regarding overall costs for MeHg analysis, the instrument costs for the preconcentration-HPLC-CV-AFS method are far lower than GC-ICP-MS, which is mainly due to the high cost of ICP-MS compared to CV-AFS. Cost-efficiency is particularly of interest to food agencies, as new regulatory limits are being introduced as of late. China introduced a T-Hg limit for rice import already, set to  $20 \mu\text{g kg}^{-1}$ , and other countries may follow this move.

Already, in 2012, the European Food Safety Authority (EFSA) set a new tolerable weekly intake (TWI) for Methylmercury of  $1.3 \mu\text{g kg}^{-1}$  bodyweight,<sup>17</sup> which is lower than the established value from 2004 by the Joint FAO/WHO Expert Committee on Food Additives (JECFA) of  $1.6 \mu\text{g kg}^{-1}$  bodyweight.<sup>18</sup> Especially in cultures or ethnic groups with high rice consumption, rice must be considered as a contributor of the overall MeHg burden in our diet, even though on a smaller scale than from seafood products.

## Conclusions

We introduced a cross-validated method for fast, robust, cost-efficient and sufficiently precise determination of trace MeHg in rice samples. Four rice samples were analyzed for MeHg with a previously described SPE-HPLC-CV-AFS approach using an external calibration, and compared the results with SS-ID-GC-ICPMS methodology. A t-test showed no significant difference for the results obtained with the two different methods. The accuracy of the online SPE-HPLC-CV-AFS approach was further evaluated using a standard addition approach, which confirmed the results obtained with the external calibration. This also reassures that the MeHg species is not degraded during the digestion step. Furthermore, enriched isotope spiking with  $^{199}\text{Hg}^{2+}$  confirmed that there is no artificial formation of MeHg from  $\text{Hg}^{2+}$ , despite the highly organic matrix. The precision of the method is comparable to the SS-ID-GC-ICPMS for MeHg in rice at the ultra-trace level.

## Acknowledgement

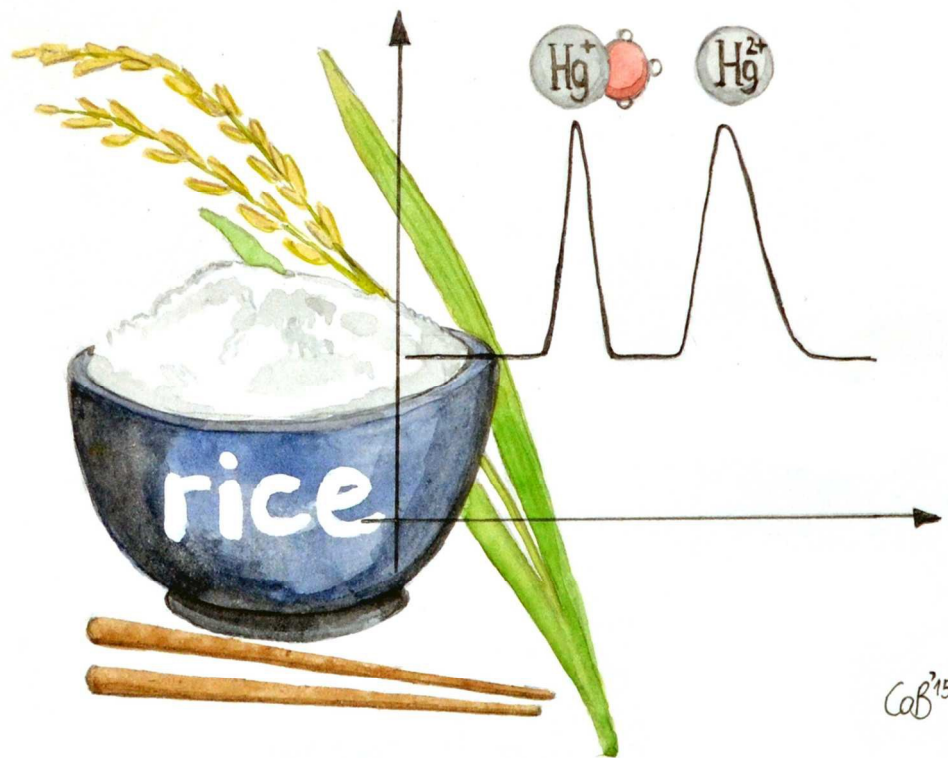
C.-Cornelius Brombach is grateful for financial support by PS Analytical, Kent, UK and the College of Physical Sciences (University of Aberdeen) to carry out his PhD project.

## Notes and references

- <sup>a</sup> University of Aberdeen, TESLA (Trace Element Speciation Laboratory), Department of Chemistry. Fax: +44-1224-272921; Tel: +44-1224-272901; E-mail: e.krupp@abdn.ac.uk
- <sup>b</sup> Environmental Health Department, University of Dammam, Saudi Arabia
- <sup>c</sup> PS Analytical, Arthur House, Crayfields Industrial Estate, Main Road, Orpington, Kent BR5 3HP, United Kingdom
- † Electronic Supplementary Information (ESI) available: [details of any supplementary information available should be included here]. See DOI: 10.1039/b000000x/
- Food and Agriculture Organization of the United Nations (FAO). Rice and human nutrition, <http://www.fao.org/rice2004/en/f-sheet/factsheet3.pdf> (accessed 11.04.2015).
  - X. Feng, P. Li, G. Qiu, S. Wang, G. Li, L. Shang, B. Meng, H. Jiang, W. Bai, Z. Li and X. Fu, *Environ. Sci. Technol.*, 2007, 42, 326-332.
  - M. R. Karagas, A. L. Choi, E. Oken, M. Horvat, R. Schoeny, E. Kamai, W. Cowell, P. Grandjean and S. Korrick, *Environ. Health Perspect.*, 2012, 120, 799-806.
  - L. Liang, M. Horvat, E. Cernichiari, B. Gelein and S. Balogh, *Talanta*, 1996, 43, 1883-1888.
  - B. Meng, X. Feng, G. Qiu, P. Liang, P. Li, C. Chen and L. Shang, *Environ. Sci. Technol.*, 2011, 45, 2711-2717.
  - Z. Cheng, H.-S. Wang, J. Du, S. Sthiannopkao, G.-H. Xing, K.-W. Kim, M. S. M. Yasin, J. H. Hashim and M.-H. Wong, *Chemosphere*, 2013, 92, 143-149.

- 1 7. S. E. Rothenberg, X. Feng, W. Zhou, M. Tu, B. Jin and J. You, *Sci.*
- 2 *Total Environ.*, 2012, 426, 272-280.
- 3
- 4 8. M. Horvat, N. Nolde, V. Fajon, V. Jereb, M. Logar, S. Lojen, R.
- 5 Jacimovic, I. Falnoga, Q. Liya, J. Faganeli and D. Drobne, *Sci.*
- 6 *Total Environ.*, 2003, 304, 231-256.
- 7 9. *EFSA Journal*, 2012, 10(12):2985, 1-241,
- 8 doi:10.2903/j.efsa.2012.2985.
- 9 10. Y. Shao, J. Wang, X. Chen and Y. N. Wu, *Food Control*, 2014, 43,
- 10 213-216.
- 11 11. C.-C. Brombach, Z. Gajdosechova, B. Chen, A. Brownlow, W.
- 12 Corns, J. Feldmann and E. Krupp, *Anal Bioanal Chem*, 2015,
- 13 407, 973-981.
- 14 12. C.-C. Brombach, B. Chen, W. T. Corns, J. Feldmann and E. Krupp,
- 15 *Spectrochimica Acta B*, 2015, 105, 103-108.
- 16 13. R. C. Rodríguez Martín-Doimeadios, T. Stoichev, E. Krupp, D.
- 17 Amouroux, M. Holeman and O. F. X. Donard, *Applied*
- 18 *Organometallic Chemistry*, 2002, 16, 610-615.
- 19 14. D. S. Vidler, R. O. Jenkins, J. F. Hall and C. F. Harrington, *Applied*
- 20 *Organometallic Chemistry*, 2007, 21, 303-310.
- 21 15. N. S. Bloom, J. A. Colman and L. Barber, *Fresenius J Anal Chem*,
- 22 1997, 358, 371-377.
- 23 16. R. Falter, *Chemosphere*, 1999, 39, 1051-1073.
- 24 17. *EFSA Panel on Contaminants in the Food Chain (CONTAM).*
- 25 *Scientific Opinion on the risk for public health related to the*
- 26 *presence of mercury and methylmercury in food. EFSA*
- 27 *Journal* 2012;10(12):2985 [241 pages].
- 28 doi:10.2903/j.efsa.2012.2985; Available online:
- 29 [www.efsa.europa.eu/efsajournal](http://www.efsa.europa.eu/efsajournal).
- 30 18.
- 31 30 *Sixty-seventh report of the Joint FAO/WHO Expert Committee on Food*
- 32 *Additives: Evaluation of certain food additives and*
- 33 *contaminants,* 2007.
- 34 <http://www.who.int/ipcs/publications/jecfa/reports/trs940.pdf>
- 35 (accessed 11.04.2015).





Determination of neurotoxic methylmercury in rice - a quick and cost effective method  
136x105mm (300 x 300 DPI)

1  
2  
3  
4  
5  
6  
7  
8  
9  
10  
11  
12  
13  
14  
15  
16  
17  
18  
19  
20  
21  
22  
23  
24  
25  
26  
27  
28  
29  
30  
31  
32  
33  
34  
35  
36  
37  
38  
39  
40  
41  
42  
43  
44  
45  
46  
47  
48  
49  
50  
51  
52  
53  
54  
55  
56  
57  
58  
59  
60