

ChemComm

Accepted Manuscript



This is an *Accepted Manuscript*, which has been through the Royal Society of Chemistry peer review process and has been accepted for publication.

Accepted Manuscripts are published online shortly after acceptance, before technical editing, formatting and proof reading. Using this free service, authors can make their results available to the community, in citable form, before we publish the edited article. We will replace this *Accepted Manuscript* with the edited and formatted *Advance Article* as soon as it is available.

You can find more information about *Accepted Manuscripts* in the [Information for Authors](#).

Please note that technical editing may introduce minor changes to the text and/or graphics, which may alter content. The journal's standard [Terms & Conditions](#) and the [Ethical guidelines](#) still apply. In no event shall the Royal Society of Chemistry be held responsible for any errors or omissions in this *Accepted Manuscript* or any consequences arising from the use of any information it contains.

Structurally optimised BODIPY derivatives for imaging of mitochondrial dysfunction in cancer and heart cells

Received 00th January 20xx,
Accepted 00th January 20xx

DOI: 10.1039/x0xx00000x

www.rsc.org/

Shubhanchi Nigam,^{a,b} Benjamin P. Burke,^{a,b} Laura H. Davies,^c Juozas Domarkas,^{b,d} Jennifer F. Wallis,^c Paul G. Waddell,^c Jennifer S. Waby,^e David M. Benoit,^a Anne-Marie Seymour,^{d,e} Christopher Cawthorne,^{b,e} Lee J. Higham^{c*} and Stephen J. Archibald^{a,b*}

The structural features required for mitochondrial uptake of BODIPY-based optical imaging agents have been explored and are the first derivatives of this class of dyes shown to have mitochondrial membrane potential-dependent uptake in both cancer and heart cells have been developed.

Mitochondrial membrane potential (MMP) plays a key role in cardiac failure and cancer.¹ The electron transport chain contained within the impermeable inner mitochondrial membrane gives rise to a negative membrane potential (ca. –150 mV to –170 mV) in healthy cells.^{2, 3} In cancerous and ischaemic heart cells, mitochondrial dysfunction can substantially disrupt the MMP^{4, 5} resulting in up to a tenfold increase in accumulation of MMP-dependent compounds.^{2, 3} During apoptotic or necrotic cell death, complete membrane depolarisation occurs and no uptake is observed.^{6, 7} Lipophilic cations carrying a positive charge can pass through lipid bilayers in the mitochondria and accumulate proportionally to the change in membrane potential gradient.² Optical agents have been developed for MMP-dependent imaging, with many derivatives based on rhodamine and tetramethylrosamine structures, with the highly effective Mitotracker® series now in common use.^{2, 8}

Boron-dipyrromethene (BODIPY) type structures are regularly used in optical biomedical imaging due to their tuneable wavelength emission, photostability, remarkable brightness and biological media compatibility.^{9–12} Recently, the

use of BODIPYs has been further extended by the incorporation of the positron emitting radioisotope, fluorine-18, resulting in multimodal positron emission tomography (PET)/optical imaging agents.^{13–15} Formation of BODIPY based PET/optical multimodal imaging can be achieved *via* B-F bond formation or modification of the structural backbone to incorporate the radiolabel.

To date, there have been no reports of BODIPY-based agents capable of imaging both cancer and heart cells in a MMP-dependent manner. Phosphonium-based lipophilic cations have been receiving interest, most notably in the development of PET imaging agents.^{16–21} Recently, Yuan *et al.* described a BODIPY triphenylphosphonium-based lipophilic cation designed for multimodal imaging which did not show MMP-dependent mitochondrial uptake.²⁰ The development of MMP-dependent tracers would offer the capability for detection of mitochondrial dysfunction in cardiac disease and cancer together with potential for monitoring of therapeutic responses.

Our approach in designing MMP dependent BODIPY derivatives is to form phosphonium cations directly on the lipophilic BODIPY backbone and study their chemical and biological characteristics. We have previously developed highly fluorescent, air-stable BODIPY-based phosphanes²² carrying either dicyclohexyl and diphenyl substituents.²³ Methylation with methyl trifluoromethanesulfonate gave phosphonium derivatives **1** and **2** (see Figure 1 and ESI).

^a Department of Chemistry, University of Hull, Cottingham Road, Hull, HU6 7RX, UK.

^b Positron Emission Tomography Research Centre, University of Hull, Cottingham Road, Hull, HU6 7RX, UK.

^c School of Chemistry, Bedson Building, Newcastle University, Newcastle upon Tyne, NE1 7RU, UK.

^d Centre for Cardiovascular and Metabolic Research, University of Hull, Cottingham Road, Hull, HU6 7RX, UK.

^e School of Biological, Biomedical and Environmental Sciences, University of Hull, Cottingham Road, HU6 7RX, UK.

Electronic Supplementary Information (ESI) available: Synthetic details, fluorescence spectra, partition coefficient determination, confocal microscopy details, flow cytometry details and computational chemistry details. See DOI: 10.1039/x0xx00000x

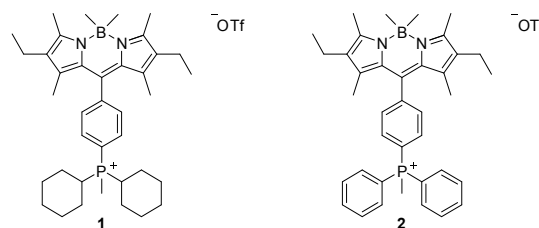


Figure 1. Chemical structures of phosphonium BODIPY derivatives **1** and **2**.

Mitochondrial uptake studies of **1** and **2** were carried out using confocal microscopy in human breast cancer cells (MCF-7) and rat cardiomyocytes (H9c2). Mitotracker deep red (MDR) was used for dye co-localisation studies as its emission wavelength (665 nm) is sufficiently different from that of **1** and **2** (532 nm) to allow independent detection. Confocal microscopy confirmed mitochondrial localisation of both **1** and **2** (see Figure 2 and ESI for further details). Overlap coefficients identified that both tracers showed similarly high mitochondrial localisation in H9c2 cells, however the overlap coefficient was 36% higher in MCF-7 cells for **1**, indicating that it has significantly greater potential as a specific imaging agent.

Imaging agents with MMP-dependent uptake offer an ideal tool to probe mitochondrial function. To establish the mitochondrial membrane potential specific uptake of **1** and **2**, a flow cytometry study was carried out in the presence of carbonyl cyanide *m*-chlorophenylhydrazone (CCCP), a protonophore which eliminates the mitochondrial membrane potential (see Figure 3 and ESI for further details).^{24, 25} Both tracers showed a decrease in mean fluorescent intensity (MFI) upon CCCP induced MMP depolarisation in both cell lines. **1** showed a greater than 70% decrease in MCF-7 and H9c2 cell lines, whereas **2** showed a smaller 38% and 58% decrease in MCF-7 and H9c2 cells respectively.

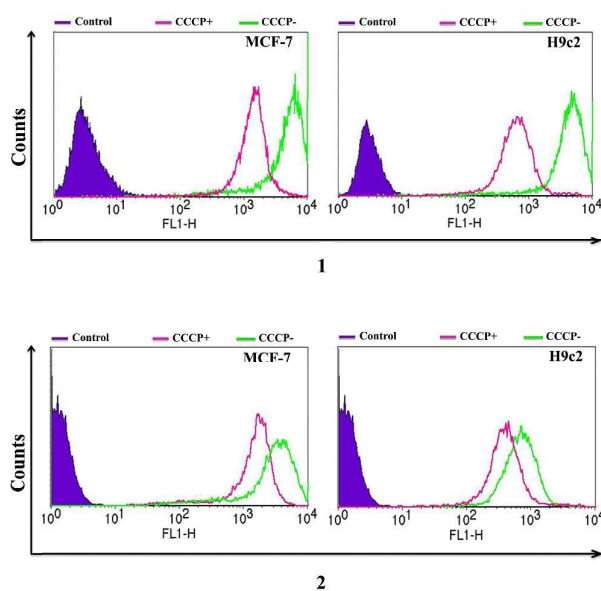


Figure 3. Flow cytometry studies of **1** and **2** in MCF-7 (left) and H9c2 (right) cells without (green) and with (purple) the presence of mitochondrial membrane depolarising agent (CCCP) to assess mitochondrial membrane potential uptake.

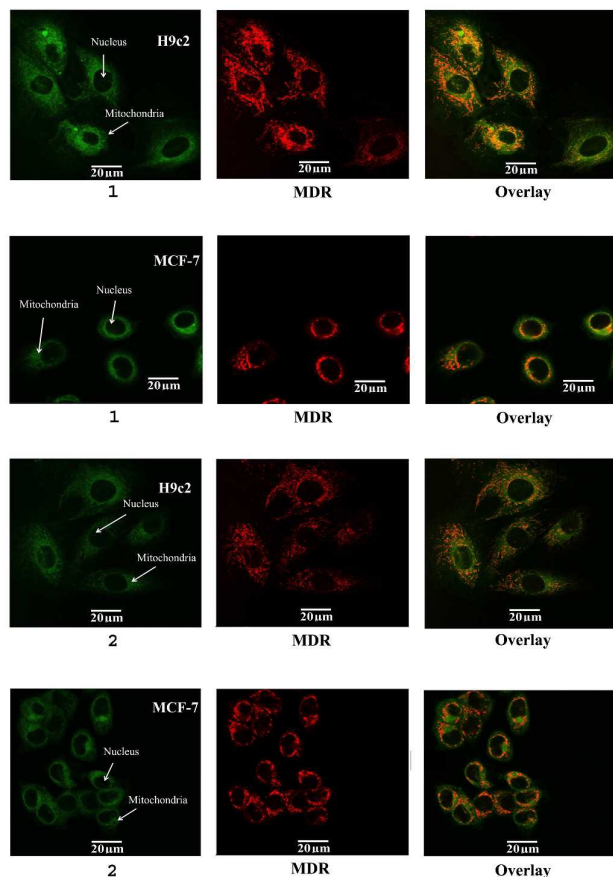


Figure 2. Confocal microscopy of **1** and **2** (left) in MCF-7 and H9c2 cell lines with mitotracker deep red (MDR, centre), overlaid mitochondrial co-localisation (right).

The vast majority of lipophilic cations used in molecular imaging are based on triphenylphosphonium ions.^{3, 16, 18, 19} In this study, we have designed and synthesised a triphenylphosphonium BODIPY structure (**2**) along with a cyclohexyl derivative (**1**) to explore the structural features necessary for MMP-dependent uptake. Both the mitochondrial localisation determined by confocal microscopy and the flow cytometry MMP-dependent uptake studies demonstrate that the replacement of two phenyl groups for two cyclohexyl groups cause an increase in MMP dependent, mitochondrial specific uptake. DFT calculations were carried out on both structures to determine the degree of delocalisation of electron density. Our calculations show (see Figure 4 and ESI for further details) that the charge is localised on the phosphorus atom for the cyclohexyl derivative (**1**) while it is mainly delocalised on the aromatic ligands for the triphenylphosphonium structure (**2**). The effect of the degree of lipophilicity on the uptake of lipophilic cations has been partially explored in previous studies, generally when describing selectivity between cancer and cardiac uptake.¹⁶ The lipophilicity (LogP) values of **1** and **2** were determined to be 3.19 and 2.80 respectively, revealing a significant increase in lipophilicity for the cyclohexyl derivative.

To validate the strategy and open opportunities for future PET/optical imaging agents, we have replaced methyl trifluoromethanesulfonate in the final step methylation reaction of the dicyclohexyl derivative with 1-bromo-4-fluorobutane. The structure of the formed product, **3**, was confirmed by NMR and X-ray crystallography (see ESI) and is the cold standard of a potential future radiolabelled product. The fluorine-18 analogue can be prepared *via* conventional

nucleophilic substitution in a one step procedure or directly from **1** in a 2-step radiolabelling protocol.^{26, 27}

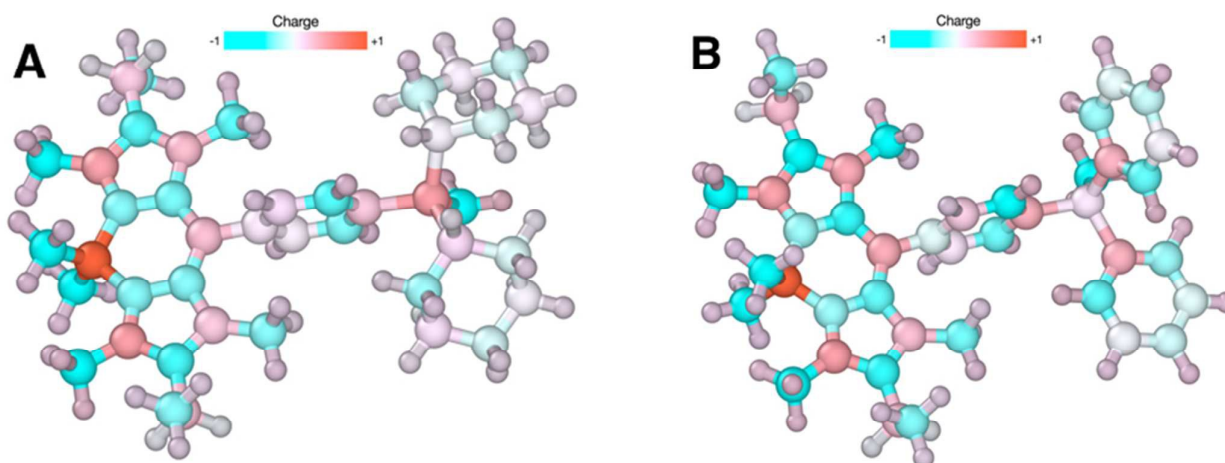


Figure 4. Charge distribution for structure (**1**) (A, left) and structure (**2**) (B, right) computed at the TPSS-D3/def2-TZVPP level of theory using their fully optimised geometries. The atomic charges are determined using the CHELPG method and represented using a colour scheme where red indicates a +1e nominal charge and blue a -1e nominal charge. Note the concentration of charge around phosphorus in A which is not seen in B.

Flow cytometry studies of **3** was carried out using an identical protocol to that used to analyse **1** and **2** to validate that this fluoride substituted derivative behaves in an analogous mode. Replacement of the methyl group in **1** with a fluorobutyl leads to an increase in MMP dependent uptake, with CCCP causing decreases in uptake of 84% and 83% in MCF-7 and H9c2 cells respectively, see Figure 5. Thus validating this approach for the design of multimodal optical/PET imaging agents.

In conclusion, we have developed novel BODIPY based agents for mitochondrial imaging. These agents, for the first time, have been shown to be taken up in mitochondria in a mitochondrial membrane potential-dependent manner in both

(purple) the presence of mitochondrial membrane depolarising agent (CCCP) to assess mitochondrial membrane potential uptake.

cancer and heart cells. The new structural class, with the phosphonium grafted directly on the BODIPY backbone, offers the opportunity to optimise structural features to reduce non-specific binding by optimising the lipophilicity of a dicyclohexyl derivative with shielded localised charge. This work validates the structural features required to develop MMP-dependent PET/optical multimodal imaging *via* fluorine-18 radiolabelling. Studies are currently underway to develop these agents for *in vivo* use.

We gratefully acknowledge the Daisy Appeal Charity for funding (Grant: DAhul0211) and the University of Hull for a fee reduction scholarship for SN. We thank Dr Assem Allam for his generous donation and ongoing support to the PET Research Centre at the University of Hull. The authors wish to thank the EPSRC National Mass Spectrometry Service at Swansea.

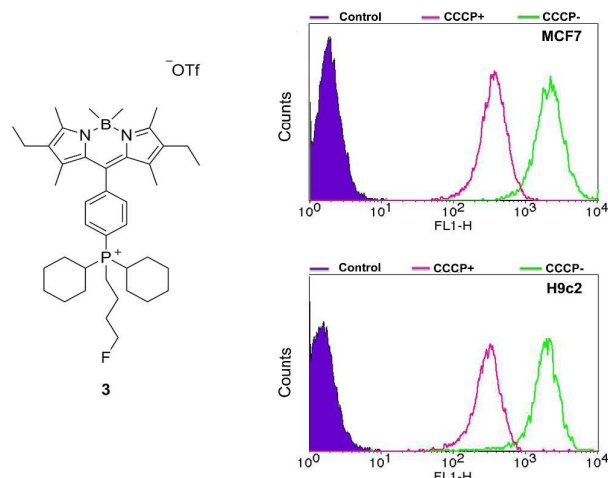


Figure 5. Chemical structure of fluorine substituted dicyclohexyl BODIPY derivative **3** and flow cytometry in MCF-7 (top) and H9c2 (bottom) cells without (green) and with

Notes and references

1. S. Fulda, L. Galluzzi and G. Kroemer, *Nat. Rev. Drug Discov.*, 2010, **9**, 447-464.
2. M. P. Murphy, *Biochim. Biophys. Acta*, 2008, **1777**, 1028-1031.
3. J. S. Modica-Napolitano and J. R. Aprille, *Adv. Drug. Deliv. Rev.*, 2001, **49**, 63-70.
4. J. S. Modica-Napolitano and J. R. Aprille, *Cancer Res.*, 1987, **47**, 4361-4365.
5. B. Kadenbach, R. Ramzan, R. Moosdorf and S. Vogt, *Mitochondrion*, 2011, **11**, 700-706.
6. H. W. Strauss and H. Schoeder, *JACC. Cardiovasc. Imaging*, 2012, **5**, 293-296.
7. V. Ganitkevich, S. Reil, B. Schwethelm, T. Schroeter and K. Benndorf, *Circul. Res.*, 2006, **99**, 165-171.

8. M. Poot, Y. Z. Zhang, J. A. Kramer, K. S. Wells, L. Jones, D. K. Hanzel, A. G. Lugade, V. L. Singer and R. P. Haughland, *J. Histochem. Cytochem.*, 1996, **44**, 1363-1372.
9. G. Ulrich, R. Ziessel and A. Harriman, *Angew. Chem. Int. Ed.*, 2008, **47**, 1184-1201.
10. N. Boens, V. Leen and W. Dehaen, *Chem. Soc. Rev.*, 2012, **41**, 1130-1172.
11. J. Karolin, L. B. A. Johansson, L. Strandberg and T. Ny, *J. Am. Chem. Soc.*, 1994, **116**, 7801-7806.
12. L. H. Davies, B. B. Kasten, P. D. Benny, R. L. Arrowsmith, H. Ge, S. I. Pascu, S. W. Botchway, W. Clegg, R. W. Harrington and L. J. Higham, *Chem. Commun.*, 2014, **50**, 15503-15505.
13. Z. Li, T. P. Lin, S. Liu, C. W. Huang, T. W. Hudnall, F. P. Gabbai and P. S. Conti, *Chem. Commun.*, 2011, **47**, 9324-9326.
14. J. A. Hendricks, E. J. Keliher, D. Wan, S. A. Hilderbrand, R. Weissleder and R. Mazitschek, *Angew. Chem. Int. Ed.*, 2012, **51**, 4603-4606.
15. B. P. Burke, G. S. Clemente and S. J. Archibald, *Contrast Media Mol. Imaging*, 2015, **10**, 96-110.
16. Y. Zhou and S. Liu, *Bioconjug. Chem.*, 2011, **22**, 1459-1472.
17. X. Yan, Y. Zhou and S. Liu, *Theranostics*, 2012, **2**, 988-998.
18. D.-Y. Kim, H.-S. Kim, L. Uyenchi Nguyen, S. N. Jiang, H.-J. Kim, K.-C. Lee, S.-K. Woo, J. Chung, H.-S. Kim, H.-S. Bom, K.-H. Yu and J.-J. Min, *J. Nucl. Med.*, 2012, **53**, 1779-1785.
19. Z. Zhao, Q. Yu, T. Mou, C. Liu, W. Yang, W. Fang, C. Peng, J. Lu, Y. Liu and X. Zhang, *Mol. Pharm.*, 2014, **11**, 3823-3831.
20. H. Yuan, H. Cho, H. H. Chen, M. Panagia, D. E. Sosnovik and L. Josephson, *Chem. Commun.*, 2013, **49**, 10361-10363.
21. B. P. Burke, P. Greenman, A. M. Smith and S. J. Archibald, *Acta Crystallogr. Sect. E: Struct. Rep. Online*, 2012, **68**, o3202-o3202.
22. L. H. Davies, B. Stewart, R. W. Harrington, W. Clegg and L. J. Higham, *Angew. Chem. Int. Ed.*, 2012, **51**, 4921-4924.
23. L. H. Davies, R. W. Harrington, W. Clegg and L. J. Higham, *Dalton Trans.*, 2014, **43**, 13485-13499.
24. H. Steen, J. G. Maring and D. K. F. Meijer, *Biochem. Pharmacol.*, 1993, **45**, 809-818.
25. M. L. R. Lim, T. Minamikawa and P. Nagley, *FEBS Lett.*, 2001, **503**, 69-74.
26. P. W. Miller, N. J. Long, R. Vilar and A. D. Gee, *Angew. Chem. Int. Ed.*, 2008, **47**, 8998-9033.
27. F. Buckingham and V. Gouverneur, *Chem. Sci.*, 2016, **7**, 1645-1652.