

# PCCP

Accepted Manuscript



This is an *Accepted Manuscript*, which has been through the Royal Society of Chemistry peer review process and has been accepted for publication.

*Accepted Manuscripts* are published online shortly after acceptance, before technical editing, formatting and proof reading. Using this free service, authors can make their results available to the community, in citable form, before we publish the edited article. We will replace this *Accepted Manuscript* with the edited and formatted *Advance Article* as soon as it is available.

You can find more information about *Accepted Manuscripts* in the [Information for Authors](#).

Please note that technical editing may introduce minor changes to the text and/or graphics, which may alter content. The journal's standard [Terms & Conditions](#) and the [Ethical guidelines](#) still apply. In no event shall the Royal Society of Chemistry be held responsible for any errors or omissions in this *Accepted Manuscript* or any consequences arising from the use of any information it contains.



## Physical Chemistry Chemical Physics

## ARTICLE

## Appearance of Annular Ring-like Intermediates during Amyloid Fibril Formation from Human Serum Albumin

Shruti Arya,<sup>a,b</sup> Arpana Kumari,<sup>c</sup> Vijit Dalal,<sup>a,c</sup> Mily Bhattacharya,<sup>\*b</sup> and Samrat Mukhopadhyay<sup>\*a,b,c</sup>

Received 00th January 20xx,  
Accepted 00th January 20xx

DOI: 10.1039/x0xx00000x

www.rsc.org/

The self-assembly of proteins triggered by a conformational switch into highly ordered  $\beta$ -sheet rich amyloid fibrils has captivated a burgeoning interest in recent years due to the involvement of amyloids in a variety of human diseases and a diverse range of biological functions. Here, we have investigated the mechanism of fibrillogenesis of human serum albumin (HSA), an all- $\alpha$ -helical protein, using an array of biophysical tools that include steady-state as well as time-resolved fluorescence, circular dichroism and Raman spectroscopy in conjunction with atomic force microscopy (AFM). Investigations into the temporal evolution of nanoscale morphology using AFM revealed the presence of ring-like intermediates that subsequently transformed into worm-like fibrils presumably by a ring-opening mechanism. Additionally, a multitude of morphologically-diverse oligomers were observed on the pathway to amyloid formation. Kinetic analysis using multiple structural probes in-tandem indicated that HSA amyloid assembly is a concerted process encompassing a major structural change that is primarily mediated by hydrophobic interactions between thermally-induced disordered segments originating in various domains. A slower growth kinetics of aggregates suggested that the protein structural reorganization is a prerequisite for the fibril formation. Moreover, time-dependent Raman spectroscopic studies of HSA aggregation provided key molecular insights into the conformational transitions occurring within the protein amide backbone and at the residue-specific level. Our data revealed the emergence of conformationally-diverse disulfides as a consequence of structural reorganization and sequestration of tyrosines into the hydrophobic amyloid core comprising antiparallel cross  $\beta$ -sheets.

### 1. Introduction

Amyloid fibrils are ordered protein aggregates and are characterized by a cross- $\beta$  motif which is comprised of  $\beta$ -strands that run perpendicular to the fibril axis and are arranged in hydrogen-bonded ribbon-like  $\beta$ -sheets.<sup>1-7</sup> The conversion of soluble monomeric protein into intractable amyloid aggregates is implicated in a multitude of human disorders that include Alzheimer's disease, Parkinson's disease, type II diabetes, and the spongiform

encephalopathies.<sup>8-16</sup> Owing to the extraordinary supramolecular architectural characteristics possessed by these amyloids, they are not just limited to diseases but have also been discovered in living organisms to perform an array of important biological functions.<sup>17-19</sup> In addition, the robust mechanical strength possessed by amyloids makes them attractive candidates for nanotechnological applications as bionanomaterials.<sup>20-23</sup> On the pathway of amyloid formation, various intermediates with different morphologies have been observed. An increasing body of evidence suggests that these oligomeric intermediates might be more cytotoxic than the matured fibrils.<sup>15, 24</sup> The morphology of these intermediates dictates the toxicity of the amyloid species and various morphologies have been observed for oligomeric as well as fibrillar species. The annular pore-like nanostructures are one of the most commonly observed morphologies that have been shown to exert cytotoxic effects in neurodegenerative diseases by the virtue of disrupting the biological membranes.<sup>25-31</sup> Thus, morphologies of these oligomeric intermediates might play a very crucial role in the pathogenesis of amyloid diseases. Therefore, understanding the morphological as well as conformational characteristics of the oligomeric intermediates and the underlying molecular mechanism of amyloid

<sup>a</sup> Centre for Protein Science Design and Engineering, Indian Institute of Science Education and Research (IISER), Mohali 140306, Punjab, India.

<sup>b</sup> Department of Chemical Sciences, Indian Institute of Science Education and Research (IISER), Mohali 140306, Punjab, India.

<sup>c</sup> Department of Biological Sciences, Indian Institute of Science Education and Research (IISER), Mohali 140306, Punjab, India.

\* Corresponding Authors. Mily Bhattacharya & Samrat Mukhopadhyay  
Emails: mily@iisermohali.ac.in & mukhopadhyay@iisermohali.ac.in  
Tel: +91-172-229-3150 Fax: +91-172-224-0266.

**Electronic Supplementary Information (ESI) available:** The Arrhenius plot, the steady-state fluorescence data for acrylodan and ANS, aggregation kinetics data from circular dichroism and Raman spectroscopy, and detailed analyses of AFM images and the data recovered from time-resolved fluorescence and Raman spectroscopy (Figure S1-S6, Table S1-S3). See DOI: 10.1039/x0xx00000x

formation is important not only for designing better therapeutics to target amyloid disorders but also for developing novel bionanomaterials. Most proteins, if not all, are capable of undergoing structural transition from their native state to amyloid fibrils under certain experimental conditions *in vitro*, suggesting that the amyloid formation might be a generic property of polypeptides.<sup>16</sup> The mechanism of amyloid formation has been investigated in a variety of model proteins such as lysozyme,  $\beta$ -lactoglobulin,  $\beta_2$ -microglobulin, insulin, islet amyloid polypeptide and serum albumins.<sup>31-40</sup> Amongst these proteins, human serum albumin (HSA) is an all  $\alpha$ -helical protein and has been considered a good model system for protein aggregation studies due to its propensity to easily aggregate under *in vitro* conditions.

HSA is a single polypeptide chain consisting of 585 amino acids and is composed of three homologous domains I-III and each domain has two sub-domains, A and B (Figure 1A).<sup>41,42</sup> It has physiological importance as a carrier protein in transporting fatty acids, drugs and other organic compounds in the circulatory system.<sup>41,43</sup> Several studies on HSA have shown that varying certain conditions like pH, ionic strength, and temperature can have a drastic effect on the native structure of HSA, for example, low pH and high temperature lead to the destabilization of its native structure.<sup>44-47</sup> The higher temperature mimics the heat stress condition that leads to heat shock or unfolded protein response which results in protein aggregation and imbalance of protein homeostasis.<sup>48</sup> Also, the high temperature provides protein molecules a sufficient amount of energy to overcome the high activation barrier thereby accelerating the aggregation reaction and making it more accessible to the laboratory timescale. In case of a multidomain protein like HSA, the increase in temperature might lead to partial destabilization of its well-organized native structure. The resultant partially destabilized state might have resemblance with the disordered state of proteins having a higher propensity to self-assemble than the native form that otherwise lacks any structural attributes that suggest predilection towards amyloid formation.<sup>9,49-51</sup> HSA aggregation has been investigated under different pH, temperature and solution conditions using a variety of tools.<sup>52-56</sup> However, an in-depth molecular insight into the structural transition from an  $\alpha$ -helical native to cross  $\beta$  sheet-rich amyloid state via oligomeric intermediates still remains elusive. In this work, we have utilized steady-state as well as time-resolved fluorescence spectroscopy, circular dichroism and atomic force microscopy to unravel the mechanism of HSA fibrillation. Efforts were directed towards elucidating the protein conformational- and size changes as a function of time with an emphasis on delineating the key structural transitions in a domain-specific manner. Additionally, Raman spectroscopic measurements at various aggregation stages provided a wealth of structural insights into the alterations in protein backbone amides and side chain residues as a function of amyloid assembly.

## 2. Experimental Methods

### 2.1 Materials

Albumin from human serum (HSA), 8-anilino-1-naphthalenesulfonic acid ammonium salt (ANS), thioflavin-T (ThT), and sodium hydrogen phosphate (monobasic) were obtained from Sigma (St. Louis, MO). 6-Acryloyl-2-(dimethylamino) naphthalene (acrylodan) and 5-(((2-iodoacetyl)amino)ethyl)amino) naphthalene-1-sulfonic acid (IAEDANS) were procured from Molecular Probes, Invitrogen Inc. Milli-Q water was used for the preparation of all solutions. The pH of the buffers was adjusted to  $\sim 7.4$  using Metrohm pH meter at  $\sim 25^\circ\text{C}$ .

### 2.2 Methods

**Aggregation reaction.** HSA stock solution was prepared in 10 mM phosphate buffer (pH 7.4). Accurate protein concentration was estimated by measuring the absorbance at 280 nm using a molar absorption coefficient ( $\epsilon$ ) of  $35219 \text{ M}^{-1} \text{ cm}^{-1}$ .<sup>52</sup> For aggregation reaction, the stock solution was diluted using the same buffer containing 50 mM NaCl to a final protein concentration of 100  $\mu\text{M}$ . The resultant solution was heated at  $65 \pm 2^\circ\text{C}$  in a heating block, preset at the required temperature under quiescent condition. Aliquots were taken out at regular intervals for the kinetics measurements. For aggregation studies using labeled HSA, the labeled protein concentration was 5% of the total protein concentration (100  $\mu\text{M}$ ) in aggregation reaction mixture.

**Arrhenius plot.** In order to monitor the temperature dependence of the aggregation reaction using ThT fluorescence, the reaction was carried out at  $55^\circ\text{C}$ ,  $65^\circ\text{C}$ ,  $70^\circ\text{C}$  and  $75^\circ\text{C}$ . ThT fluorescence observed under different temperature conditions could be fitted to single exponential. The activation energy was obtained using the Arrhenius equation,

$$k = A \exp(-E_a/RT) \quad (1)$$

where  $A$  is the pre-exponential factor,  $T$  is the absolute temperature,  $R$  is the universal gas constant and  $E_a$  is the activation energy. The slope of  $\ln(k)$  versus  $1/T$  plot yielded the activation energy ( $E_a$ ) for the reaction.

**Circular dichroism (CD) measurements.** The CD spectra were acquired using Chirascan Spectrophotometer (Applied Photophysics, UK) in 1 mm path length quartz cell with scan range of 200-260 nm and 1 nm as step size. The spectra were corrected for the buffer signal and were plotted in Origin 8.5 software.

**Atomic Force Microscopy (AFM) imaging.** AFM images of oligomers and amyloid fibrils were acquired on MultiView 2000<sup>TM</sup> instrument (Nanonics Imaging Ltd., Jerusalem, Israel) operating in intermittent contact mode based on phase feedback technique. For AFM imaging, the aliquots were withdrawn after 10 min and 2 h. The sample withdrawn after 10 min was diluted 4000-fold and the one which was

withdrawn after 2 h was diluted 2000-fold using aggregation reaction buffer filtered through 0.22  $\mu\text{m}$  syringe filter. The sample (10  $\mu\text{L}$  in volume) was deposited on freshly cleaved and buffer-washed muscovite mica (Grade V-4 mica from SPI, PA). Mica surface was incubated with sample for 20 min before washing it with filtered Milli-Q water and dried under a gentle stream of nitrogen gas. AFM scanning was performed under ambient environmental conditions using Cr-coated cantilevered glass probe of diameter  $\sim 10$  nm oscillating at a resonance frequency of  $\sim 32$  kHz. AFM height images of 400 X 400 pixels in resolution, covering areas of 10  $\mu\text{m}$  X 10  $\mu\text{m}$  were collected with sample delay of 4 ms. Smaller areas (2.5  $\mu\text{m}$  X 2.5  $\mu\text{m}$  or 1.45  $\mu\text{m}$  X 1.45  $\mu\text{m}$ ) were scanned to image finer morphological features. The AFM images were acquired using Quartz software (provided with MultiView) and were processed using WSxM software provided with our AFM instrument.

#### Fluorescence labeling of HSA with acrylodan and IAEDANS.

The labeling of the free cysteine in domain I with acrylodan and IAEDANS was carried out separately in 10 mM phosphate buffer (pH 7.4) according to the protocol described previously.<sup>57</sup> Briefly, acrylodan/IAEDANS and HSA were mixed in a 10:1 molar ratio and allowed to stir in the dark for 24 h at room temperature. Stock solutions of acrylodan (in acetonitrile) and IAEDANS (in dimethyl sulfoxide (DMSO)) were prepared freshly. The labeled protein was then passed through PD-10 column to remove any unreacted dye and was further concentrated using AMICON ultra (30 kDa cutoff; from Millipore). Finally, the reaction mixture was dialyzed against 10 mM phosphate buffer (pH 7.4) over a 4-day period at 4°C; with buffer change after every 12 h. The concentration of the labeled protein was estimated using  $\epsilon_{365} = 12,800 \text{ M}^{-1} \text{ cm}^{-1}$ , for acrylodan<sup>58</sup> and  $\epsilon_{337} = 6100 \text{ M}^{-1} \text{ cm}^{-1}$  for AEDANS.<sup>59</sup>

**Steady-state fluorescence measurements.** All the steady-state fluorescence measurements were performed on FluoroMax-4 spectrofluorometer (Horiba Jobin Yvon, NJ) at  $\sim 25^\circ\text{C}$ . The aliquots of the protein sample were taken out at different time intervals and were diluted 5-fold in 10 mM phosphate buffer (pH 7.4) for all the steady-state fluorescence measurements, except for the AEDANS-labeled protein. The AEDANS samples were not diluted before the fluorescence measurements. The samples were excited at 295 nm (Trp), 350 nm (ANS), 360 nm (acrylodan), 337 nm (AEDANS) and 450 nm (ThT). The concentration of ANS and ThT used for ANS and ThT binding experiments, respectively, was 10  $\mu\text{M}$ . The steady-state fluorescence anisotropies were measured at 350 nm (Trp), 470 nm (ANS), 500 nm (acrylodan) and 475 nm (AEDANS). The steady-state fluorescence anisotropy ( $r_{ss}$ ) is given by the following relationship<sup>60, 61</sup>:

$$r_{ss} = (I_{||} - I_{\perp}G) / (I_{||} + 2I_{\perp}G) \quad (2)$$

where  $I_{||}$  and  $I_{\perp}$  are fluorescence intensities collected using parallel and perpendicular geometry, respectively. The perpendicular components were always corrected using a G-factor.

**Time resolved fluorescence measurements.** All the time-resolved fluorescence data were acquired using time-correlated single photon counting (TCSPC) setup (Fluorocube, Horiba Jobin Yvon, NJ). For fluorescence lifetime measurements, the peak count was fixed to 10,000 and the excitation and emission polarizers were oriented at the magic angle ( $54.7^\circ$ ). For time-resolved fluorescence anisotropy measurements, the peak difference was 10,000 counts and the orientation of emission polarizer was  $0^\circ$  and  $90^\circ$  with respect to the excitation polarizer for parallel fluorescence intensities ( $I_{||}$ ) and perpendicular fluorescence intensities ( $I_{\perp}$ ), respectively. The emission monochromator for AEDANS was fixed at 500 nm with a bandpass of 4 nm. The 375 nm laser diode was used as a light source for the excitation of AEDANS. The instrument response function (IRF) was collected using Ludox (colloidal silica). The width (FWHM) of IRF was  $\sim 250$  ps. The anisotropy decays were analyzed by globally fitting  $I_{||}(t)$  and  $I_{\perp}(t)$ .<sup>60</sup> Briefly, the fluorescence intensity decay curves were deconvoluted taking IRF into account using

$$I(t) = \sum_i \alpha_i e^{-t/\tau_i} \quad (3)$$

where  $\alpha_i$  and  $\tau_i$  represent the contributions and lifetime of the different lifetime components, respectively. The fitted parameters were then used as input for the anisotropy decay analysis and  $I_{||}(t)$  and  $I_{\perp}(t)$  were fitted using:

$$I_{||}(t) = \frac{I(t)[1 + 2r(t)]}{3} \quad (4)$$

$$I_{\perp}(t) = \frac{I(t)[1 - r(t)]}{3} \quad (5)$$

where  $I_{||}(t)$  and  $I_{\perp}(t)$  represent the parallel and perpendicular fluorescence intensities, respectively.  $I(t)$  represents the fluorescence intensity at magic angle ( $54.7^\circ$ ) and  $r(t)$  is the anisotropy decay function. The perpendicular fluorescence intensities were corrected for G-factor which was obtained for AEDANS using ANS in 100% ethanol. The anisotropy decays were then analyzed using a biexponential anisotropy decay function that describes the fast (local) and slow (global) motion of a fluorophore.<sup>60, 62</sup>

$$r(t) = r(0)[\beta_{fast} \exp(-t/\phi_{fast}) + \beta_{slow} \exp(-t/\phi_{slow})] \quad (6)$$

where  $r(0)$  represents the intrinsic anisotropy of a fluorophore;  $\phi_{fast}$  and  $\phi_{slow}$  represent the fast and slow rotational correlation times, respectively with  $\beta_{fast}$  and  $\beta_{slow}$  as their respective amplitudes. For estimating  $r(0)$  for all the fluorophores, the fluorophores were taken in 100% glycerol and the decays were collected. The  $r(0)$  so obtained was used for analyzing the anisotropy data with a window of  $\pm 0.005$ . The slow correlation time represents the global motion of a fluorophore and hence can be used for estimating the size of a molecule using Stokes-Einstein relationship given by

$$\phi_{slow} = \frac{\eta V}{k_B T} \quad (7)$$

where  $\eta$  is the viscosity,  $k_B$  is the Boltzmann constant,  $T$  is the temperature which was kept as 25°C for all the experiments and  $V$  is the molecular volume given by  $V = (4/3)\pi R_h^3$  where  $R_h$  is the hydrodynamic radius of the molecule.

**Raman spectroscopy.** Raman spectra of the samples were collected on an inVia Raman microscope with 180° scattering geometry (Renishaw, UK). The samples were prepared freshly. The aliquots were withdrawn at regular time intervals and the samples were precipitated with acetone (100% v/v). The precipitates were then deposited on glass slide covered with aluminium foil. A HPNIR laser with 785 nm wavelength was used as excitation source and focused into the sample spot using a 50X objective lens (Nikon, Japan). The scattered light was collected through the same objective and was allowed to pass through an edge filter (785 nm) in order to remove the Rayleigh scattering. A 1200 l/mm grating was used for the dispersion of the scattered light and the signal was finally detected with air-cooled CCD detector. The data acquisition was done using Wire 3.1 software provided with our Raman spectrometer. All the spectra were averaged over 50 scans with an exposure time of 10 s for the spectral range 400-2500  $\text{cm}^{-1}$ , 1600-1700  $\text{cm}^{-1}$  and 1200-1300  $\text{cm}^{-1}$ . All the data were corrected for tilt in the baseline using cubic spline interpolation method and smoothed in Wire 3.1 software. The baseline corrected and smoothed Raman spectra were plotted in Origin 8.5 software. The deconvolution of Raman spectra was done in Origin 8.5 software as described in our previous publication.<sup>63</sup> The spectral range for the estimation of the secondary structure content was 1620-1700  $\text{cm}^{-1}$  (amide I) and 1220-1300  $\text{cm}^{-1}$  (amide III). The peaks were first analyzed by peak analyzer option in Origin 8.5 software. Mainly three bands were observed in 1640-1700  $\text{cm}^{-1}$  and 1220-1300  $\text{cm}^{-1}$  that correspond to  $\alpha$ -helix (1645-1654  $\text{cm}^{-1}$ , 1264-1272  $\text{cm}^{-1}$ ),  $\beta$ -sheet (1665-1674  $\text{cm}^{-1}$ , 1230-1240  $\text{cm}^{-1}$ ) and coils, turns or extended conformation (1680-1690  $\text{cm}^{-1}$ , 1245-1255  $\text{cm}^{-1}$ ). These bands were then fitted using multiple peak-fitting with the Gaussian function.

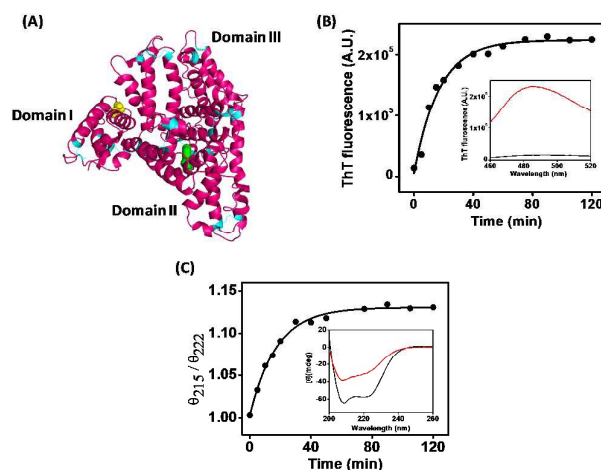
### 3. Results and Discussion

#### 3.1 Kinetics of amyloid fibril formation and secondary structural changes

The progression of HSA fibrillation at high temperature was monitored by thioflavin-T (ThT) which is a well-known amyloid marker.<sup>64</sup> A sharp increase in ThT fluorescence, devoid of any lag phase, was observed within 1 h of incubation indicating a rapid structural transition from the native  $\alpha$ -helical state to the amyloidogenic state (Figure 1B). Typically, amyloid formation via the nucleation-dependent polymerization mechanism exhibits a lag phase followed by an assembly phase.<sup>14, 50</sup> The absence of lag phase in HSA fibrillation suggests that the nuclei are formed immediately upon incubation at high temperature which is in contrast to that observed during a nucleation-dependent amyloid assembly.

This observation might indicate a “downhill polymerization” mechanism<sup>50</sup> and is in agreement with the previous reports on HSA fibrillation.<sup>52</sup> However, the reaction rate observed by us was faster. A single exponential fit of the time-course of ThT fluorescence was adequate to describe the fibril formation kinetics suggesting a quasi-two-state transition. Additionally the observed rate of fibrillation, monitored by ThT fluorescence, increased with an increase in temperature and a linear Arrhenius plot was obtained (Figure S1). The activation energy estimated (Equation 1 in Experimental Methods) from the slope of the Arrhenius plot was found to be  $\sim 157$  kJ/mol ( $\sim 37.5$  kcal/mol) which is higher than that of bovine serum albumin.<sup>65</sup>

The CD spectrum of native HSA shows two minima at 208 and 222 nm indicating the characteristics of an  $\alpha$ -helical conformation and is consistent with its crystal structure.<sup>41, 42</sup> As aggregation reaction progressed, a significant decrease in the ellipticity at 222 nm ( $\theta_{222}$ ) was observed (Figure 1C). We also observed an increase in  $\theta_{215}/\theta_{222}$  and  $\theta_{205}/\theta_{222}$  as a function of time that signified the emergence of  $\beta$ -sheet and disordered structures, respectively, at the expense of the  $\alpha$ -helices during amyloid formation. The CD signature of the amyloid fibrils remained unchanged even after prolonged incubation at room temperature. Next, AFM imaging was performed to gain insights into the nanoscale morphology of early oligomeric intermediates and amyloid fibrils.



**Figure 1.** (A) The crystal structure of human serum albumin (PDB ID: 1UOR) generated using PyMol (DeLano Scientific, CA). The disulfides, tryptophan (in domain II) and the free cysteine (in domain I) are shown in cyan, green and yellow, respectively. The amyloid formation kinetics monitored by (B) ThT fluorescence and (C) CD. The continuous black lines through the data points represent the fits obtained using a single-exponential kinetic model (Inset in both the figures show the spectra for zero time point (black) and final time point (red) of fibrillation).

#### 3.2 Nanoscale morphological transitions

Atomic force microscopy (AFM) is a non-invasive and chemical-free imaging technique which has emerged as a promising tool for investigating nanoscale topographical features of protein

amyloids.<sup>66-68</sup> In our study, we utilized AFM in a time-dependent manner to visualize the morphologies of early oligomeric species and their subsequent transition to matured fibrillar species (Figure 2). Therefore, prior to incubating the sample at elevated temperature, AFM imaging was performed. We observed small spherical particles of heights ranging from 2-4 nm and upon statistical analysis, a unimodal height distribution centered at  $\sim 2.5$  nm was obtained (Figure S2A, C) indicating that even at 100  $\mu$ M concentration, HSA remained predominantly monomeric. Upon incubation at higher temperature, AFM imaging revealed a heterogeneous co-existence of nanoscopic ring-like aggregates and protofibrils (Figure 2A and S2B). The statistical analysis of the topography of ring-like species revealed a height range of 2-8 nm (Figure S2D), similar to that of protofibrils (Figure S3), and an inner diameter of 30-50 nm (Figure S3). The 3D image of a single ring has been shown for clarity (Figure 2B). It is possible that the smaller rings anneal to form protofibrils (Figure 2G inset) that subsequently anneal to form bigger rings. At later stages of aggregation ( $\geq 2$  h), a mixed population of crescent-shaped intermediates, sliced rings and worm-like fibrils was observed (Figure 2C, H & I and insets). Such morphological diversity among HSA aggregates in addition to a predominant population of worm-like fibrils suggested that probably, the early ring-like intermediates unravel to form curly/worm like fibrils (Figure 2H & I and insets). The height of these fibrils ranged between 3-6 nm and the average diameter for the sliced rings was 40-50 nm. These fibrils do not undergo any further growth and sliced rings were evident even after

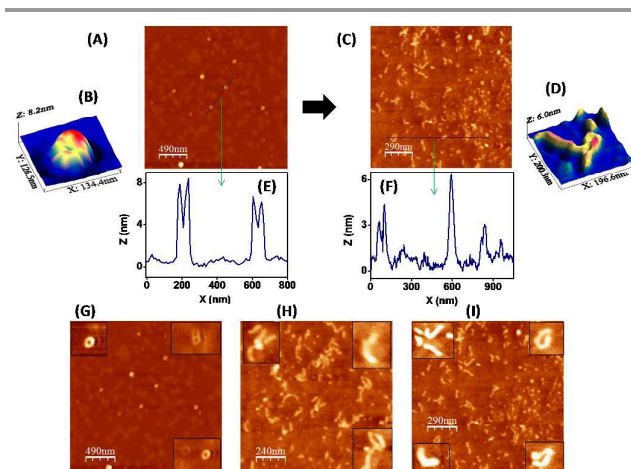
prolonged incubation (Figure S3A). Therefore, a careful investigation of HSA aggregation using AFM indicated a complex process comprising a time-dependent, stepwise evolution of morphologically-diverse nanoscopic species on the pathway to amyloid fibrils. At first, the predominantly monomeric HSA molecules associate and transform into ring-like oligomeric intermediates that are apparently metastable. Subsequently, these ring-like species undergo further transition to worm-like fibrils presumably, by a ring-opening mechanism. The proposed mechanism might hold true for many disease-related proteins that form ring-like nanostructures in the intermediate stages of amyloid aggregation.<sup>27-31</sup>

### 3.3 Conformational and dynamical changes during amyloid formation

After establishing the morphological characteristics of various nanoscopic species *en-route* to HSA amyloid fibrillation, next we embarked upon probing the protein structural changes using fluorescence spectroscopy with an emphasis on delineating the conformational changes in various domains. Fluorescence spectroscopy is a highly sensitive and multiparametric technique for studying protein conformational- and dynamical changes in a site-specific manner whereby intrinsic and/or extrinsic fluorophores can be employed. The steady-state fluorescence spectrum provides insights into the local environment around the fluorophore whereas the steady state fluorescence anisotropy provides information about an overall size of the protein with a presumption that the overall size changes predominate over the local dynamics.<sup>60, 61</sup> HSA contains a free cysteine (Cys 34) in domain I and a single tryptophan (Trp 214) in domain II (Figure 1A).<sup>41-43</sup> In order to probe the conformational changes around domain I during HSA fibrillation, the free thiol group of Cys 34 was covalently modified with two distinct extrinsic fluorophores namely, acrylodan and IAEDANS whereas the conformational changes around domain II were probed by Trp which is an intrinsic fluorophore. Additionally, time-resolved fluorescence decay measurements provided quantitative estimates about the average sizes of the HSA aggregates.

#### 3.3.1 Structural changes in domain I

The local conformational changes in domain I were monitored by acrylodan (covalently attached to Cys 34) due to its high sensitivity towards the micro-environment.<sup>69</sup> An increase in acrylodan fluorescence with a concomitant blue shift in emission maxima of  $\sim 22$  nm (from 499 nm to 477 nm; Figure S4A, B in Supplementary Information) suggested that the region near Cys 34 gets buried into hydrophobic environment during aggregation. The emergence of more hydrophobic regions in HSA aggregates could be due to non-specific association between thermally-unfolded, disordered structures. The sequestration of Cys 34 into hydrophobic regions is also accompanied by an enhancement in the aggregate size since an increase in the acrylodan fluorescence anisotropy was observed during HSA fibrillation (Figure S4C).

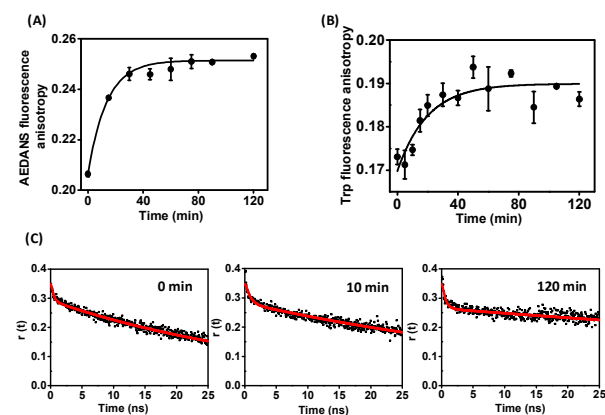


**Figure 2.** AFM images and the height profiles of (A) oligomeric ring-like structures formed after 10 min ( $2.5 \mu\text{m} \times 2.5 \mu\text{m}$  area) and (C) worm-like fibrils formed after 2 h incubation at  $65^\circ\text{C}$  ( $1.45 \mu\text{m} \times 1.45 \mu\text{m}$  area). The 3D images of (B) a single ring-like structure and (D) fibrils show the topography of the observed morphologies. (E) & (F): The AFM line-profiles of the images are shown in height plots. (G-I) The AFM images showing transition of oligomeric ring-like structures (with figure E insets showing the individual as well as annealed ring-like structures) to worm-like fibrils (with figure F and G insets showing the transition from ring-like intermediates to fibrils).

We also monitored the steady-state fluorescence anisotropy kinetics of AEDANS (covalently attached to Cys 34 in domain I) since it has a longer fluorescence lifetime ( $\geq 10$  ns) and therefore, is more sensitive to the overall size-growth of aggregates.<sup>70</sup> As aggregation progressed, the AEDANS fluorescence anisotropy showed a time-dependent increase indicating the formation of large-sized aggregates and hence, corroborated the acrylodan anisotropy data (Figure 3A).

### 3.3.2 Structural changes in domain II

Investigations into the structural changes in domain II utilizing Trp 214 fluorescence revealed a drop in the fluorescence intensity along with a blue shift of  $\sim 10$  nm (from 340 nm to 330 nm) in the emission maxima (Figure S5A). The blue shift indicates that during aggregation Trp 214 gets relocated into more hydrophobic environment and the nearby residues such as histidines and cystines probably quench its fluorescence resulting in a drop in the intensity. Additionally, changes in Trp fluorescence indicate changes in the tertiary structure during aggregation. Next, we monitored the steady-state fluorescence anisotropy of Trp 214 which increased as a function of time, suggestive of the formation of larger aggregates and hence, reaffirmed the acrylodan and AEDANS anisotropy results (Figure 3B). Next, in order to investigate the changes in hydrophobicity of HSA during amyloid aggregation, alterations in ANS (non-covalently bound, extrinsic probe) fluorescence intensity were monitored as a function of time since ANS is a well-known hydrophobic environment reporter.<sup>71, 72</sup>



**Figure 3.** Kinetics of amyloid formation monitored by (A) AEDANS covalently attached to the free cysteine and (B) Trp steady-state fluorescence anisotropy. The continuous black lines through the data points represent the fits obtained using a single-exponential kinetic model. (C) Time-resolved fluorescence anisotropy decay for AEDANS at three different stages of aggregation. The red lines represent the bi-exponential anisotropy decay fits using equation 6 (See Table S1 for the recovered parameters associated with depolarization kinetics).

### 3.3.3 Changes in overall hydrophobicity

Free ANS is scarcely fluorescent in water with an emission maximum at  $\sim 515$  nm that undergoes a significant blue shift to  $\sim 475$  nm with a simultaneous rise in intensity upon binding to hydrophobic pockets.<sup>73</sup> Additionally, it has been demonstrated that the cytotoxicity of amyloidogenic entities could be correlated with the changes in ANS fluorescence intensity.<sup>74</sup> Monomeric native HSA contains at least three hydrophobic, ANS binding sites (in domains II and III) that primarily differ by higher and lower binding affinities.<sup>75, 76</sup> In our study, initially we observed a high ANS fluorescence intensity (0 min sample; prior to heating) indicating that ANS was bound to the hydrophobic pockets of the predominantly monomeric protein at room temperature. As aggregation was triggered upon raising the temperature, we observed a progressive drop in ANS fluorescence at  $\sim 475$  nm which saturated to  $\sim 50\%$  of the initial intensity within one hour of amyloid fibrillation (Figure S5B & C). Since ANS fluorescence provides information about the overall hydrophobicity, we speculate that at elevated temperature, the hydrophobic sites specifically harboring the ANS get deformed due to the thermal unfolding of domains II and III<sup>77</sup> and consequently, ANS molecules can no longer bind to the hydrophobic pockets. However, the fact that the ANS emission does not undergo any red-shift from  $\sim 475$  nm (Figure S5B) suggests that probably, ANS molecules still remain bound to the hydrophobic clusters of HSA aggregates. Additionally, a rise in the ANS fluorescence anisotropy (Figure S5D) during amyloid aggregation indicated the formation of larger aggregates which is in accordance with our tryptophan anisotropy data. Taken together, our results suggest that both domains I and II undergo conformational changes during HSA fibrillation.

### 3.3.4 Dynamical signature and average sizes of the aggregates

In order to gather insights into the dynamical changes and the size-growth associated with HSA amyloid formation, time-resolved fluorescence measurements were carried out on Cys 34 (domain I) covalently linked with AEDANS, which is considered a suitable fluorophore for studying the depolarization measurements due to the long fluorescence lifetime.<sup>70</sup> The fluorescence anisotropy decay of AEDANS in the native form (0 min), ring-like intermediates (10 min) and worm-like fibrils (120 min) showed bi-exponential depolarization kinetics comprising a fast and a slow rotational correlation times that represent the local motion of the probe and the global motion (tumbling) of the protein molecules/aggregates, respectively (Figure 3C and Equation 6 in Experimental Methods). The results from the detailed analyses of the time-resolved fluorescence data are summarized in Table S1. The longer component (global) was used for estimating the average hydrodynamic sizes of the predominantly monomeric, oligomeric and fibrillar HSA (Equation 7 in Experimental Methods) that were found to be  $3.4 \pm 0.1$  nm,  $3.9 \pm 0.1$  nm and  $5.2 \pm 0.7$  nm, respectively. The observed increase in the longer rotational correlation time for oligomers and fibrils is suggestive of the dampening of the

global motion resulting from the association of protein molecules to form oligomeric species that subsequently form large-sized amyloid fibrils. Therefore, taken together, all of the fluorescence measurements revealed that both domains I and II get progressively buried into hydrophobic regions which evolve due to non-specific association between temperature-induced disordered segments that are generated during aggregation. The emergence of hydrophobic clusters is also supported by ANS fluorescence at  $\sim 475$  nm although the hydrophobic pockets in native HSA probably get deformed upon increase in temperature. The progressive increase in the average aggregate sizes, as indicated by steady-state anisotropy, was further confirmed by the time-resolved fluorescence data. Next, we embarked upon delineating finer structural changes at the molecular level during various stages of the assembly process using Raman spectroscopy.

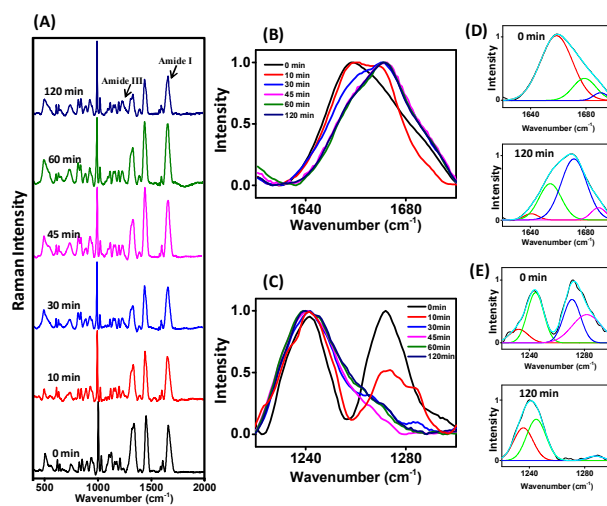
### 3.4 Structural insights into amyloid assembly using Raman spectroscopy

Raman spectroscopy being a very powerful technique allows us to pinpoint the fine differences among various protein conformations on the basis of mainly backbone amides (amide I:  $1620\text{--}1700\text{ cm}^{-1}$  and amide III:  $1220\text{--}1300\text{ cm}^{-1}$ ) and several characteristic side-chain vibrations at a residue-specific level such as Cys, Trp, and Tyr.<sup>63, 78–80</sup> In our study, we monitored the Raman spectra of HSA aggregates in a time dependent manner, especially the amide I and amide III bands (Figure 4) since the deconvolution of the peaks in these regions gave an estimate of secondary structural elements such as  $\alpha$ -helices,  $\beta$ -sheets and random coil/extended conformations at different aggregation stages (Table S2 and S3). Additionally, detailed analyses of amide III region provided information about the Ramachandran  $\psi$  dihedral angle which allowed us to predict the  $\beta$ -sheet packing in amyloid nanostructures.<sup>81</sup> Moreover, the tyrosines and disulfides provided some key insights into the protein conformational transitions during amyloid aggregation.

#### 3.4.1 Insights into the backbone amide I and III regions

The Raman spectrum obtained for HSA prior to incubation at  $65^\circ\text{C}$  (0 min) showed a major amide I peak at  $1658\text{ cm}^{-1}$ , indicative of  $\alpha$ -helical structure along with two minor peaks at  $1679\text{ cm}^{-1}$  and  $1690\text{ cm}^{-1}$  which correspond to coils/extended conformation (Figure 4B). As aggregation progressed upon raising the temperature, the amide I band showed a transition from initially  $\alpha$ -helix rich state ( $1658\text{ cm}^{-1}$ ) to  $\beta$ -sheet rich state ( $1670\text{ cm}^{-1}$ ) via oligomeric intermediates rich in extended conformation/random coil content ( $1660\text{ cm}^{-1}$ ) (Figure 4B). For instance, the 10 min sample comprising oligomeric species and the ring-like structures retained a high content of random coil and extended conformation along with  $\alpha$ -helices and  $\beta$ -sheets (Table S2). For subsequent time points, the contents of  $\alpha$ -helices, random coils and extended conformations dropped significantly with an appreciable increase in the  $\beta$ -sheet content as is evident from the shift in amide I peak at  $1658\text{ cm}^{-1}$  to  $1670\text{ cm}^{-1}$  (Figure 4B) which is a characteristic of the

amyloid architecture. The kinetics of the growth of  $1670\text{ cm}^{-1}$  band at the expense of  $1658\text{ cm}^{-1}$  band was similar to that of CD and ThT fluorescence (Figure S6 & Figure 4).



**Figure 4.** (A) Raman spectra ( $400\text{--}2000\text{ cm}^{-1}$ ) at different time points of HSA aggregation with black arrows showing amide I and amide III regions. (B) The amide I ( $1620\text{--}1700\text{ cm}^{-1}$ ) and (C) amide III region ( $1220\text{--}1300\text{ cm}^{-1}$ ) at different time points of aggregation showing transition from predominantly  $\alpha$ -helical to  $\beta$ -sheet-rich structure. The deconvolution of (D) amide I region for zero (0 min) and final time point (120 min) along with (E) amide III region for the same time points is shown. (The individual peaks obtained upon fitting are shown in blue, red, green and magenta. The cumulative peaks are shown in cyan.)

The amide III peaks of the native HSA (0 min sample) were centered at  $1245\text{ cm}^{-1}$  and  $1270\text{ cm}^{-1}$  (Figure 4C), which correspond to coils/turns and  $\alpha$ -helices, respectively. The amide III peak at  $1270\text{ cm}^{-1}$  almost completely disappeared with time suggesting an attenuation in the  $\alpha$ -helical content (Figure 4C) whereas the peak at  $1243\text{ cm}^{-1}$  gained prominence. This observation suggested that the substantial drop in  $\alpha$ -helical content was concomitant with an increase in the  $\beta$ -sheet content, thus corroborating the results obtained from the amide I region. The peak observed at  $1243\text{ cm}^{-1}$  is in agreement with the results obtained for insulin filaments and ovalbumin amyloid pores.<sup>63, 82</sup> Further analysis of the amide III peak (at  $1243\text{ cm}^{-1}$ ) using the approach reported previously<sup>81</sup>, enabled us to estimate the Ramachandran  $\psi$  dihedral angle which was found to be  $\approx +143^\circ$ ; suggestive of antiparallel  $\beta$ -sheet conformation. Interestingly, the analysis of amide III band for early ring-like nanoscopic species formed after 10 min also showed the presence of a higher amount of random coil and extended conformation (Table S3) compared to the later times that showed more ordered  $\beta$ -sheet rich structures. Therefore, based on the results obtained from amide I and amide III regions, we suggest that HSA fibrillation proceeds through a loss of  $\alpha$ -helical content in conjunction with an increase in the random coil content followed by reorganization into antiparallel  $\beta$ -sheet rich amyloid fibrils.



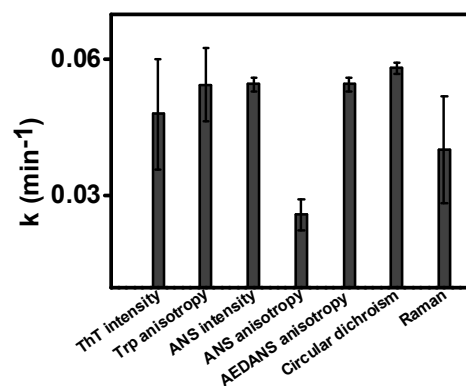
### 3.4.2 Insights into residue-specific changes during aggregation

After gaining information about protein backbone conformational changes, we investigated the side chain vibrations at the residue-specific level. The peaks observed at 830 and 850  $\text{cm}^{-1}$  represent the Fermi doublet for tyrosine. The intensity ratio of 850 to 830 is an indicator of the hydrogen bonding strength between the hydroxyl group of tyrosine and the surrounding solvent molecules.<sup>78, 79</sup> The  $I_{850}/I_{830}$  ratio for the native conformation was  $\sim 1.3$  which decreased to  $\sim 1.0$  during aggregation. This indicates weakening of the H-bonding between the tyrosine moiety and the neighboring water molecules in  $\beta$ -sheet rich conformations which in turn, implies that the tyrosines get progressively buried during the aggregation. However, the weakening of the hydrogen bonding is an average assessment since HSA contains 18 tyrosines. We next monitored the changes in the disulfide Raman intensities since HSA contains 17 disulfide bridges that contribute towards the overall structural rigidity but allow sufficient conformational flexibility to HSA upon changes in solution conditions.<sup>83</sup> Typically, the disulfide S-S stretching frequency appears at  $\sim 510 \pm 5 \text{ cm}^{-1}$  as observed during insulin<sup>82, 84</sup> and lysozyme aggregation.<sup>85</sup> In our study, we observed multiple peaks in 500-600  $\text{cm}^{-1}$  for the disulfide bonds wherein a major peak at  $\sim 507 \text{ cm}^{-1}$  remained conserved throughout the aggregation. Some new peaks ( $\sim 520 \text{ cm}^{-1}$ ,  $\sim 550 \text{ cm}^{-1}$ ) emerged during aggregation and the peak at 507  $\text{cm}^{-1}$  became broader (Figure S6C). Analysis of all the Raman disulfide peaks revealed a strong dependence of S-S wavenumber position on the torsional angle  $\chi(\text{C-S-S-C})$  which provides information about the internal rotation about C-S and C-C bonds in  $\text{C}_\alpha\text{-C}_\beta\text{-S-S-C}_\beta\text{-C}_\alpha'$  conformations.<sup>86, 87</sup> The peak at  $510 \pm 5 \text{ cm}^{-1}$  ( $\sim 507 \text{ cm}^{-1}$ , in our case) is suggestive of the gauche-gauche-gauche conformation ( $\chi: \pm 60^\circ$ ) that was confirmed by careful analysis of the disulfides in the crystal structure using PyMol (Figure 1a). The additional peaks observed at  $525 \pm 5 \text{ cm}^{-1}$  and at  $540 \pm 5 \text{ cm}^{-1}$  are attributed to gauche-gauche-trans ( $\chi: \pm 80\text{-}90^\circ$ ) and trans-gauche-trans conformations, respectively. Our results indicate the emergence of multiple, heterogeneous disulfide conformers during the transformation from the  $\alpha$ -helical state to cross- $\beta$  sheet-rich amyloid fibrils comprising antiparallel  $\beta$ -sheets. Additionally, the broadening of peak position during the transition from the native to the amyloid state is suggestive of structural rearrangement as a consequence of intermolecular non-covalent interactions and "perturbations in local environment"<sup>85</sup> that emerge during HSA amyloid assembly.

### 3.5 Mechanism of HSA amyloid fibrillation using multiple structural probes

In this study, multiple structural probes were employed to discern the time-dependent evolution of molecular events underlying HSA amyloid formation. We followed the aggregation kinetics by CD, steady-state as well as time-resolved fluorescence, and Raman spectroscopy that revealed a lag phase independent assembly (Figure 5). The time-dependence of various spectroscopic readouts could be

satisfactorily described using a single exponential kinetics and an apparent first order rate constant of  $(5 \pm 0.8) \times 10^{-2} \text{ min}^{-1}$  was obtained for all the probes (Figure S5, S6A & S6B), except for ANS anisotropy. The similarity in the rates suggested that the structural reorganization and amyloid formation occur simultaneously. However, the aggregate growth rate, monitored by ANS fluorescence anisotropy, was found to be somewhat slower compared to the structural changes (Figure 5 & S5B). These findings suggest that the amyloid formation involves a major structural change that triggers the self-assembly process followed by a slow growth phase.



**Figure 5.** The plot comparing the apparent first order rate constants recovered from the amyloid formation kinetics monitored using multiple structural probes viz. ThT and ANS fluorescence intensity; Trp, ANS and AEDANS fluorescence anisotropy; circular dichroism (ratio of ellipticity at 205 nm to 222 nm); amide I vibration from Raman spectroscopy (ratio of 1670  $\text{cm}^{-1}$  to 1658  $\text{cm}^{-1}$  bands). See also Figure S5 and S6 for the kinetics data.

## 4. Conclusions

In summary, we have investigated the mechanism of amyloid fibril formation from human serum albumin using a host of biophysical tools. The kinetic analyses of multiple spectroscopic readouts indicated that the amyloid formation involves a major conformational change from a predominantly monomeric all  $\alpha$ -helical to a cross- $\beta$  sheet rich structure in a lag phase-independent manner. Raising the temperature triggers the formation and accumulation of flexible, non-native unfolded or disordered conformers that facilitate the protein self-assembly mediated by various non-covalent including hydrophobic interactions. Also, almost all the domains participate in antiparallel  $\beta$  sheet-rich amyloid assembly whereby tryptophan, tyrosines, and the lone cysteine get sequestered into the hydrophobic interior. Additionally, AFM imaging revealed the formation of a multitude of morphologically-diverse nanoscopic intermediates during amyloid aggregation. We speculate that the nanoscopic ring-like intermediates might be metastable structures that subsequently mature into worm-like fibrils through a unique mechanism that involves both annealing and unraveling of rings. The antiparallel  $\beta$ -sheet structures have been linked with amyloid-induced toxicity and have been observed for various

toxic, annular pore-like oligomers of disease-related proteins or peptides. The ring-like intermediates observed by us might have resemblance with the annular pores that can interact with the membrane and disrupt the membrane by pore formation. The elucidation of the cascade of molecular events and morphological transition is important for designing small-molecule inhibitors for anti-amyloid therapeutics. We believe that such mechanistic studies will open new avenues for the controlled fabrication of exotic bionanomaterials having a wide array of nano-biotechnological applications.

### Acknowledgements

We thank the members of the Mukhopadhyay laboratory for critically reading the manuscript. We thank IISER Mohali for the financial support, the Ministry of Human Resources Development, Govt. of India for the Centre of Excellence grant, the Council of Scientific and Industrial Research, New Delhi (research grant to S.M., research fellowships to S.A. and A.K.) and the Department of Science and Technology, New Delhi (for the SERB Young Scientist Scheme to M.B.). We thank Prof. N. Periasamy (TIFR Mumbai) for the time-resolved fluorescence data analysis software.

### References

- I. K. Lednev, *Biophys. J.*, 2014, 106, 1433-1435.
- R. V. Pappu, *Biophys. J.*, 2014, 107, 795-797.
- R. Tycko and R. B. Wickner, *Acc. Chem. Res.*, 2013, 46, 1487-1496.
- C. J. Sarell, P. G. Stockley and S. E. Radford, *Prion*, 2013, 7, 359-368.
- J. Greenwald and R. Riek, *Structure*, 2010, 18, 1244-1260.
- O. S. Makin and L. C. Serpell, *FEBS J.*, 2005, 272, 5950-5961.
- R. Nelson, M. R. Sawaya, M. Balbirnie, A. O. Madsen, C. Riek, R. Grothe and D. Eisenberg, *Nature*, 2005, 435, 773-778.
- J. Brettschneider, K. Del Tredici, V. M. Lee and J. Q. Trojanowski, *Nat. Rev. Neurosci.*, 2015, 16, 109-120.
- V. N. Uversky, V. Davé, L. M. Iakoucheva, P. Malaney, S. J. Metallo, R. R. Pathak and A. C. Joerger, *Chem. Rev.*, 2014, 114, 6844-6879.
- T. P. Knowles, M. Vendruscolo and C. M. Dobson, *Nat. Rev. Mol. Cell Biol.*, 2014, 15, 384-396.
- B. H. Meier and A. Bockmann, *Curr. Opin. Struct. Biol.*, 2014, 30C, 43-49.
- D. Eisenberg and M. Jucker, *Cell*, 2012, 148, 1188-1203.
- I. Moreno-Gonzalez and C. Soto, *Semin. Cell Dev. Biol.*, 2011, 22, 482-487.
- J. Lee, E. K. Culyba, E. T. Powers and J. W. Kelly, *Nat. Chem. Biol.*, 2011, 7, 602-609.
- M. Stefani and C. Dobson, *J. Mol. Med.*, 2003, 81, 678-699.
- F. Chiti, P. Webster, N. Taddei, A. Clark, M. Stefani, G. Ramponi and C. M. Dobson, *Proc. Natl. Acad. Sci. U. S. A.*, 1999, 96, 3590-3594.
- D. M. Fowler, A. V. Koulov, W. E. Balch and J. W. Kelly, *Trends Biochem. Sci.*, 2007, 32, 217-224.
- M. M. Barnhart and M. R. Chapman, *Annu. Rev. Microbiol.*, 2006, 60, 131-147.
- H. Wu, *Cell*, 2013, 153, 287-292.
- I. Cherny and E. Gazit, *Angew. Chem. Int. Ed.*, 2008, 47, 4062-4069.
- T. Scheibel, R. Parthasarathy, G. Sawicki, X.-M. Lin, H. Jaeger and S. L. Lindquist, *Proc. Natl. Acad. Sci. U. S. A.*, 2003, 100, 4527-4532.
- C. Li and R. Mezzenga, *Nanoscale*, 2013, 5, 6207-6218.
- U. Shimanovich, I. Efimov, T. O. Mason, P. Flagmeier, A. K. Buell, A. Gedanken, S. Linse, K. S. Åkerfeldt, C. M. Dobson, D. A. Weitz and T. P. J. Knowles, *ACS Nano*, 2015, 9, 43-51.
- M. Stefani, *Prog. Neurobiol.*, 2012, 99, 226-245.
- M. Bucciantini, E. Giannoni, F. Chiti, F. Baroni, L. Formigli, J. Zurdo, N. Taddei, G. Ramponi, C. M. Dobson and M. Stefani, *Nature*, 2002, 416, 507-511.
- S. M. Butterfield and H. A. Lashuel, *Angew. Chem. Int. Ed.*, 2010, 49, 5628-5654.
- K. N. Dahlgren, A. M. Manelli, W. B. Stine, L. K. Baker, G. A. Krafft and M. J. LaDu, *J. Biol. Chem.*, 2002, 277, 32046-32053.
- H. A. Lashuel and P. T. Lansbury, *Q. Rev. Biophys.*, 2006, 39, 167-201.
- M. Stöckl, N. Zijlstra and V. Subramaniam, *Mol. Neurobiol.*, 2013, 47, 613-621.
- H. A. I. Lin, R. Bhatia and R. Lal, *FASEB J.*, 2001, 15, 2433-2444.
- A. Nath, A. D. Miranker and E. Rhoades, *Angew. Chem. Int. Ed. Engl.*, 2011, 50, 10859-10862.
- A. Cao, D. Hu and L. Lai, *Protein Sci.*, 2004, 13, 319-324.
- D. Hamada and C. M. Dobson, *Protein Sci.*, 2002, 11, 2417-2426.
- J. L. Jiménez, E. J. Nettleton, M. Bouchard, C. V. Robinson, C. M. Dobson and H. R. Saibil, *Proc. Natl. Acad. Sci. U. S. A.*, 2002, 99, 9196-9201.
- P. Taboada, S. Barbosa, E. Castro and V. Mosquera, *J. Phys. Chem. B*, 2006, 110, 20733-20736.
- M. Bhattacharya, N. Jain and S. Mukhopadhyay, *J. Phys. Chem. B*, 2011, 115, 4195-4205.
- R. Mishra, K. Sörgjerd, S. Nyström, A. Nordigården, Y.-C. Yu and P. Hammarström, *J. Mol. Biol.*, 2007, 366, 1029-1044.
- T. Eichner, A. P. Kalverda, G. S. Thompson, S. W. Homans and S. E. Radford, *Mol. Cell*, 2011, 41, 161-172.
- S. E. Hill, J. Robinson, G. Matthews and M. Muschol, *Biophys. J.*, 2009, 96, 3781-3790.
- Diana E. Schlamadinger and Andrew D. Miranker, *Biophys. J.*, 2014, 107, 2559-2566.
- S. Curry, H. Mandelkow, P. Brick and N. Franks, *Nat. Struct. Mol. Biol.*, 1998, 5, 827-835.
- S. Sugio, A. Kashima, S. Mochizuki, M. Noda and K. Kobayashi, *Protein Eng.*, 1999, 12, 439-446.
- X. M. He and D. C. Carter, *Nature*, 1992, 358, 209-215.
- M. Dockal, *J. Biol. Chem.*, 2000, 275, 3042-3050.
- N. K. Das, N. Ghosh, A. P. Kale, R. Mondal, U. Anand, S. Ghosh, V. K. Tiwari, M. Kapur and S. Mukherjee, *J. Phys. Chem. B*, 2014, 118, 7267-7276.
- A. K. Shaw and S. K. Pal, *J. Photochem. Photobiol. B*, 2008, 90, 69-77.
- W. Qiu, L. Zhang, O. Okobiah, Y. Yang, L. Wang, D. Zhong and A. H. Zewail, *J. Phys. Chem. B*, 2006, 110, 10540-10549.
- K. R. Richter, M. Haslbeck and J. Buchner, *Mol. Cell*, 2010, 40, 253-266.
- V. N. Uversky and A. L. Fink, *Biochim. Biophys. Acta*, 2004, 1698, 131-153.
- R. V. Pappu, X. Wang, A. Vitalis and S. L. Crick, *Arch. Biochem. Biophys.*, 2008, 469, 132-141.
- Q. Qiao, G. R. Bowman and X. Huang, *J. Am. Chem. Soc.*, 2013, 135, 16092-16101.
- J. Juárez, P. Taboada and V. Mosquera, *Biophys. J.*, 2009, 96, 2353-2370.
- J. Juárez, P. Taboada, S. Goy-López, A. Cambón, M.-B. Madec, S. G. Yeates and V. Mosquera, *J. Phys. Chem. B*, 2009, 113, 12391-12399.

54. A. Stirpe, M. Pantusa, B. Rizzuti, L. Sportelli, R. Bartucci and R. Guzzi, *Int. J. Biol. Macromol.*, 2011, 49, 337-342.
55. J. Juárez, M. Alatorre-Meda, A. Cambón, A. Topete, S. Barbosa, P. Taboada and V. Mosquera, *Soft Matter*, 2012, 8, 3608.
56. S. Movaghati, A. A. Moosavi-Movahedi, F. Khodaghali, H. Digaleh, E. Kachooei and N. Sheibani, *Colloids Surf. B. Biointerfaces*, 2014, 122, 341-349.
57. R. Wang, S. Sun, E. J. Bekos and F. V. Bright, *Anal. Chem.*, 1995, 67, 149-159.
58. K. Flora, J. D. Brennan, G. A. Baker, M. A. Doody and F. V. Bright, *Biophys. J.*, 1998, 75, 1084-1096.
59. E. N. Hudson and G. Weber, *Biochemistry*, 1973, 12, 4154-4161.
60. J. R. Lakowicz, *Principles of fluorescence spectroscopy*, Springer, New York, 2006.
61. N. Jain and S. Mukhopadhyay, in *Applied Spectroscopy and the Science of Nanomaterials*, ed. P. Misra, Springer Singapore, 2015, vol. 2, ch. 3, pp. 41-57.
62. S. Arya and S. Mukhopadhyay, *J. Phys. Chem. B*, 2014, 118, 9191-9198.
63. M. Bhattacharya, N. Jain, P. Dogra, S. Samai and S. Mukhopadhyay, *J. Phys. Chem. Lett.*, 2013, 4, 480-485.
64. H. Levine, *Protein Sci.*, 1993, 2, 404-410.
65. N. K. Holm, S. K. Jespersen, L. V. Thomassen, T. Y. Wolff, P. Sehgal, L. A. Thomsen, G. Christiansen, C. B. Andersen, A. D. Knudsen and D. E. Otzen, *Biochim. Biophys. Acta*, 2007, 1774, 1128-1138.
66. I. Usov, J. Adamcik and R. Mezzenga, *Faraday Discuss.*, 2013, 166, 151.
67. L. R. Volpatti, M. Vendruscolo, C. M. Dobson and T. P. J. Knowles, *ACS Nano*, 2013, 7, 10443-10448.
68. K. K. M. Sweers, K. O. van der Werf, M. L. Bennink and V. Subramaniam, *ACS Nano*, 2012, 6, 5952-5960.
69. R. E. Hibbs, T. T. Talley and P. Taylor, *J. Biol. Chem.*, 2004, 279, 28483-28491.
70. S. Mukhopadhyay, P. K. Nayak, J. B. Udgaonkar and G. Krishnamoorthy, *J. Mol. Biol.*, 2006, 358, 935-942.
71. A. Hawe, M. Sutter and W. Jiskoot, *Pharm. Res.*, 2008, 25, 1487-1499.
72. K. E. Marshall, K. L. Morris, D. Charlton, N. O'Reilly, L. Lewis, H. Walden and L. C. Serpell, *Biochemistry*, 2011, 50, 2061-2071.
73. E. Daniel and G. Weber, *Biochemistry*, 1966, 5, 1893-1900.
74. B. Bolognesi, J. R. Kumita, T. P. Barros, E. K. Esbjorner, L. M. Luheshi, D. C. Crowther, M. R. Wilson, C. M. Dobson, G. Favrin and J. J. Yerbury, *ACS Chem. Biol.*, 2010, 5, 735-740.
75. K. Takehara, K. Yuki, M. Shirasawa, S. Yamasaki and S. Yamada, *Anal. Sci.*, 2009, 25, 115-120.
76. I. M. Kuznetsova, A. I. Sulatskaya, O. I. Povarova and K. K. Turoverov, *PLoS One*, 2012, 7, e40845.
77. B. Farruggia, F. Rodriguez, R. Rigatuso, G. Fidelio and G. Picó, *J. Protein Chem.*, 2001, 20, 81-89.
78. D. Nemecek, J. Stepanek and G. J. Thomas, in *Current Protocols in Protein Science*, John Wiley & Sons, Inc., 2001, DOI: 10.1002/0471140864.ps1708s71.
79. R. Tuma, *J. Raman Spectrosc.*, 2005, 36, 307-319.
80. V. A. Shashilov, V. Sikirzhytski, L. A. Popova and I. K. Lednev, *Methods*, 2010, 52, 23-37.
81. A. V. Mikhonin, S. V. Bykov, N. S. Myshakina and S. A. Asher, *J. Phys. Chem. B*, 2006, 110, 1928-1943.
82. T. Zako, M. Sakono, N. Hashimoto, M. Ihara and M. Maeda, *Biophys. J.*, 2009, 96, 3331-3340.
83. M. Bhattacharya, N. Jain, K. Bhasne, V. Kumari and S. Mukhopadhyay, *J. Fluoresc.*, 2011, 21, 1083-1090.
84. K. Huang, N. C. Maiti, N. B. Phillips, P. R. Carey and M. A. Weiss, *Biochemistry*, 2006, 45, 10278-10293.
85. R. Remmele, Jr., P. McMillan and A. Bieber, *J. Protein Chem.*, 1990, 9, 475-486.
86. N. Biswas, A. J. Waring, F. J. Walther and R. A. Dluhy, *Biochim. Biophys. Acta*, 2007, 1768, 1070-1082.
87. H. E. Van Wart and H. A. Scheraga, *J. Phys. Chem.*, 1976, 80, 1823-1832.