

PCCP

Accepted Manuscript



This is an *Accepted Manuscript*, which has been through the Royal Society of Chemistry peer review process and has been accepted for publication.

Accepted Manuscripts are published online shortly after acceptance, before technical editing, formatting and proof reading. Using this free service, authors can make their results available to the community, in citable form, before we publish the edited article. We will replace this *Accepted Manuscript* with the edited and formatted *Advance Article* as soon as it is available.

You can find more information about *Accepted Manuscripts* in the [Information for Authors](#).

Please note that technical editing may introduce minor changes to the text and/or graphics, which may alter content. The journal's standard [Terms & Conditions](#) and the [Ethical guidelines](#) still apply. In no event shall the Royal Society of Chemistry be held responsible for any errors or omissions in this *Accepted Manuscript* or any consequences arising from the use of any information it contains.

Camera-based single-molecule FRET detection with improved time resolutionShazia Farooq¹ and Johannes Hohlbein¹

¹ Laboratory of Biophysics, Wageningen UR, Dreijenlaan 3, 6703 HA Wageningen, The Netherlands

Contact: johannes.hohlbein@wur.nl**ABSTRACT**

The achievable time resolution of camera-based single-molecule detection is often limited by the frame rate of the camera. Especially in experiments utilizing single-molecule Förster resonance energy transfer (smFRET) to probe conformational dynamics of biomolecules, increasing the frame rate by either pixel-binning or cropping the field of view decreases the number of molecules that can be monitored simultaneously. Here, we present a generalised excitation scheme termed stroboscopic alternating-laser excitation (sALEX) that significantly improves the time resolution without sacrificing highly parallelised detection in total internal reflection fluorescence (TIRF) microscopy. In addition, we adapt a technique known from diffusion-based confocal microscopy to analyse the complex shape of FRET efficiency histograms. We apply both sALEX and dynamic probability distribution analysis (dPDA) to resolve conformational dynamics of interconverting DNA hairpins in the millisecond time range.

INTRODUCTION

Powerful methods based on the detection of fluorescence emitted from single molecules have significantly expanded our capabilities to study biological and chemical processes at the molecular level.¹⁻⁴ One prominent technique is single-molecule Förster resonance energy transfer (smFRET), which is used to monitor distances and molecular interactions in the nanometre range.⁵⁻⁷ In addition to providing static structural information,^{8,9} there is a growing interest in applying smFRET to probe conformational dynamics within single enzymes^{10,11} and, ideally, even to probe those dynamics during reactions such as monitoring conformational changes of DNA polymerases during DNA synthesis. However, the two standard schemes for smFRET detection,¹² diffusion-based confocal microscopy and camera-based total internal reflection fluorescence (TIRF) or widefield microscopy,^{13,14} are ultimately limited in their ability to combine parallel detection of many molecules with obtaining data at sufficiently high time resolution. Recent attempts of achieving higher time resolution in FRET microscopy involve camera-based detection in combination with micro- and nanofluidic devices¹⁵, tethering of fluorescently labelled species to slowly diffusing liposomes in confocal microscopy¹⁶ or utilising correlation and transition-point analysis together with short binning of fluorescence lifetime-resolved confocal data.^{10,17,18}

We have previously reported on the conformational landscape of the unliganded DNA polymerase I, which exhibits fast conformational changes between an open and a closed conformation of the fingers-subdomain in the low millisecond time range.^{5,11,19,20} However, the DNA pol I dynamics are too slow to directly resolve them using diffusion-based confocal microscopy and too fast to monitor them with a camera. As of 2015, the latest generation of emCCD cameras is achieving frame rates of around 60 Hz for full frame detection (512 by 512

pixel) and sCMOS cameras, which have not yet been widely adapted for single-molecule fluorescence detection, run at frame rates of up to 100 Hz.

Here, we report on a generalised outline for camera-based smFRET detection, which combines the concepts of alternating-laser excitation (ALEX)^{21–25} and stroboscopic illumination^{26–28} to achieve a significant improvement in time resolution. In order to analyse dynamics faster than the corresponding frame rates of the camera, we adapt dynamic probability distribution analysis (dPDA), a technique widely used in diffusion-based confocal microscopy,^{11,29–33} for data obtained using TIRF microscopy allowing us to close the currently existing gap in obtainable time resolution between confocal and camera-based single-molecule detection. In contrast to diffusion-based microscopy, our technique allows monitoring the fate of single, surface-immobilised molecule for extended periods of time with up to hundreds of molecules in parallel. We demonstrate by both simulations and experiments using doubly labelled DNA hairpins^{34–36} that resolving dynamic conformational states with a lifetime in the order of a few milliseconds is possible.

EXPERIMENTS AND THEORETICAL ANALYSIS

Stroboscopic alternating-laser excitation (sALEX)

In our implementation of ALEX, we use stroboscopic illumination to excite donor fluorophores in our FRET system (DNA hairpin, Fig.1a) only for a short time during each frame acquired by the camera (Fig. 1b). As a result, FRET values calculated from the fluorescence intensities of the molecules in the donor and acceptor detection channel represent short snapshots of the

underlying FRET dynamics. Let us consider for simplicity a molecular system that switches between a low and a high FRET state. If the dynamics are faster than the corresponding acquisition rate of the camera, FRET time traces and FRET efficiency histograms measured using the conventional excitation scheme show temporal averaging, whereas the stroboscopic excitation allows a distinction of the two states depending on the duration of each excitation interval (Fig. 1c). After donor excitation, the direct excitation of acceptor molecules allows monitoring their presence and photophysical state.²¹

Single-molecule FRET microscopy

The general design of the single-molecule FRET TIRF setup was described previously.^{13,21} Instead of a conventional microscope body, we used a RAMM system (rapid-automated-modular-microscope) as a stage holder (ASI, USA) together with a motorised x,y scanning stage with a z -piezo for controlling precise sample placement along the optical axis of the microscope. For excitation, we used a fibre-coupled laser engine (Omicron, Germany) equipped with four lasers of different wavelengths (405 nm, 473 nm, 561 nm, and 642 nm). A home-written LabVIEW program independently controlled the laser intensities and triggered the camera. The single mode fibre generated a Gaussian shaped beam profile and a point source output at the other end of the fibre. The divergent light is collimated ($f = 100$ mm, Thorlabs, Germany) and a second lens focuses ($f = 200$ mm, Thorlabs, Germany) the light back into the back focal plane of a 100x NA 1.49 TIRF objective (Nikon, Japan). A custom-made multicolour polychroic mirror (zt405/473/561/640rpc, Chroma, USA) and a multibandpass filter (zet405/473/561/640m, Chroma, USA) are used to block any laser light in the emission path. After spatial filtering of the fluorescence with a two-lens system consisting of two tube lenses ($f = 200$ mm, Thorlabs,

Germany) and an adjustable slit (Thorlabs, Germany), the light was spectrally split using two dichroic mirrors (zt561rdc and zt640rdc, Chroma) and a mirror into three beams corresponding to a blue, green, and red fluorescence detection channel. The three beams were then focused ($f = 300$ mm) on an Ixon Ultra 897 emCCD camera with 512 x 512 pixel (Andor, Northern-Ireland) that was operated in a photon-counting mode giving direct access to photon numbers.

The acquisition rate of the camera was set to 20 Hz. We used laser powers of 1.5 mW (561 nm laser) and 0.75 mW (642 nm) for experiments in which the laser was exciting fluorophores for the full duration of each camera frame (50 ms). In case of stroboscopic excitation (3 ms), we increased the laser powers to 30 mW (561 nm laser) and 15 mW (642 nm) in order to obtain a similar count rate of our fluorophores. Movies were recorded for 1000 frames. Sets of experiments comparing 50 ms excitation with short stroboscopic excitation (3 ms) were performed in the same sample well.

Image analysis

For image analysis we used a modified version of TwoTone, a freely available, MATLAB-based software package, which identifies molecules and measures the photon counts by fitting the molecular point spread functions to two dimensional Gaussians.¹³ Molecules with an elongated shape indicating two overlapping molecules or molecules with an inter-molecular distance of less than around 500 nm were withdrawn from further analysis. For all remaining molecule containing both donor and acceptor, we obtained three photon streams *DD* (donor detection channel after direct excitation of the donor), *DA* (acceptor detection channel after direct excitation of the donor, FRET channel) and *AA* (acceptor detection channel after direct excitation

of the acceptor) allowing us to calculate the apparent FRET efficiency $E^* = DA / (DD + DA)$ and the stoichiometry $S_{PR} = (DD + DA) / (DD + DA + AA)$. The data shown in the FRET efficiency histograms was filtered by applying two threshold criteria to each time frame: $DD + DA > 60$ photons and $AA > 30$ photons for simulated data. For the experimental data, we increased the intensity thresholds to $DD + DA > 200$ photons and $AA > 50$ photons and used an additional stoichiometry-based threshold of $0.4 \leq S_{PR} \leq 0.9$ to account for the higher sample complexity featuring donor- and acceptor-only molecules. No other frames or molecules were excluded from analysis unless explicitly stated.

Signal to noise considerations in smFRET TIRF microscopy

An analytic expression for the standard deviation $\sigma(E)$ of observed FRET distributions in TIRF microscopy has been previously derived.¹³ The expression accounts for heterogeneity in static homogeneous samples caused by shot noise, background photons, noise due to the electron-multiplying gain register of emCCD cameras, read-out noise and dark noise and is given by

$$\sigma(E) = 1.33 \sqrt{\frac{f_G^2 E_0 (1 - E_0)}{D + A} + \frac{4\pi}{a^2 (D + A)^4} (A^2 s_D^2 b_D^2 + D^2 s_A^2 b_A^2)}, \quad (1)$$

where E_0 is the mean apparent FRET value; s_D and s_A are the widths of the PSF in the donor and acceptor channel; b_D and b_A are the observed standard deviations (photons per pixel) of the background noise in each channel; D (same as DD signal mentioned above) and A (AA) are the photon counts for the entire PSF, in the donor and acceptor channels respectively; a is the pixel size; and $f_G = \sqrt{2}$ is the excess noise factor accounting for noise introduced by the emCCD. The additional factor of 1.33 accounts for the excess heterogeneity introduced by the fitting algorithm of the point spread function, which does, in our implementation, not account for shot noise in the recorded images.^{13,15} Using values introduced in the section describing the simulations yields

standard deviations in the order of $\sigma(E) \sim 0.06$ which we used as starting values of the excess widths for data fitting using dynamic probability distribution analysis described below. Under experimental conditions, however, we expect additional heterogeneity introduced by, for example, focal drift and intermolecular heterogeneity.¹³

Dynamic probability distribution analysis (dPDA) in TIRF microscopy

The acquisition of brief snapshots using sALEX imposes limitations to the way the data of smFRET time traces can be analysed as the conformational changes occurring during periods of no excitation are hidden and cannot be monitored. Thereby, the stroboscopic excitation prevents the analysis of single time traces with hidden Markov modelling (HMM) which has been applied to determine FRET dynamics as long as the dynamics are slower than the rate of data acquisition.^{37,38} In fact, the brief snapshots are comparable to data from diffusion-based confocal microscopy in which fluorescently labelled entities give rise to short (1-3 ms)²⁰ bursts of fluorescence as the molecules diffuse through the confocal spot. Therefore, we decided to adapt a concept known from diffusion-based confocal microscopy, (dynamic) probability distribution analysis (dPDA), which uses the experimentally obtained distribution of photon counts to recapitulate complex FRET distributions.^{11,29-33} The shape and width of these distributions is influenced by the potential presence of static FRET species as well as by species dynamically interconverting between two or more conformations.

The dynamic model of a two-state system, here represented by a low FRET (open) and high-FRET (closed) DNA hairpin (Fig. 1a), is fully described by two peak positions (E^*_o and E^*_c), two excess widths (σ_o and σ_c) and two rate constants k_{oc} and k_{co} . The excess width describes to

which extend the width of the histogram of a single static species deviates from the width predicted by shot-noise limited fluorescence emission and detection and has been discussed extensively for confocal microscopy^{35,39} suggesting that acceptor photophysics is the main source of the observed broadening. In TIRF microscopy, however, additional sources of noise such as camera read-out, stage drift and fitting algorithms have to be considered.¹³

The dPDA algorithm calculates a semi-empirical histogram of FRET efficiencies based on various parameters and has been described in greater detail for confocal microscopy¹¹. In our implementation, the algorithm consisted of the following steps: (1) We choose an oversampling factor (normally set to 10) to reduce the statistical noise of the random number generators used and a model of six parameters (E^*_o , E^*_c , σ_o , σ_c , k_{oc} and k_{co}). Before fitting, initial guesses of all six parameters were provided. (2) For each molecule and each frame, which fulfilled the three thresholds discussed above ($DD + DA$, AA , S_{PR}) and a E^* standard deviation based threshold criteria discussed below, we calculated the probabilities of finding the molecule in one of the two states based on the initial guesses of the interconversion rates. Using these probabilities and the measured number of photons detected after donor excitation in the particular frame given by $DD + DA$, we draw two new binominal-distributed random numbers describing the expected number of photons from each conformational state $f_{o,i}$ or $f_{c,i}$. If necessary, this is repeated, as several interconversions can happen within one frame leading to two final photon numbers of f_o and f_c for each frame. (3) To account for the excess width of FRET distributions in smFRET TIRF microscopy, we decided to take a different approach to the one previously used for confocal microscopy in which the excess width was introduced by adding normal distributed noise to the distances calculated from the initial guesses of E^*_o and E^*_c .^{11,19} Here, we added normal distributed random numbers with a standard deviation given by the excess width σ_i directly to

the initial E^*_i value for each valid frame. Even though the original approach would account better for distance fluctuations between the fluorophores, it introduces asymmetry in the later back-calculated FRET histograms due to the non-linear relation between E^* and the distances which prevented good fits for our simulated and experimental data. Instead of using both approaches of artificially broadening the predicted FRET efficiency distributions, we decided to use only the addition of noising to the initially set E^*_o and E^*_c to keep the model as simple as possible. In any case, the contribution of distance variations at the time scale of a single frame can be considered negligible compared to various dynamic and static sources of heterogeneity discussed previously.¹³ In fact, the authors found that focal drift and intermolecular heterogeneity caused by either slowly-interconverting photophysically distinct states of the acceptor or slow fluctuations in donor-acceptor separation account for most of the detectable excess width.¹³ (4) Using E^*_o , E^*_c , f_o and f_c (again for each frame and each molecule) we draw two new binominal-distributed random numbers describing how many photons can be expected in the donor channel for each of the underlying two conformational states during each frame and the duration of excitation therein. These two numbers are then summed up and normalized by the number of photons measured experimentally or taken from the analysed simulated data to yield an expected FRET efficiency. (5) Steps 2-4 are repeated according to the oversampling factor and normalised accordingly. (6) The histograms of the predicted FRET efficiencies are then compared to the experimentally determined FRET efficiencies. The initially set values are varied to achieve a better agreement of the histograms using a least-mean-squares algorithm implemented in MATLAB and C++.⁴⁰

To evaluate the goodness of the fit between the simulated or experimental data and the predicted dPDA fit, we calculated the reduced chi-squared statistic as similarly suggested previously:³¹

$$\chi^2 = \frac{1}{z - y} \sum_{i=1}^z \frac{[Freq(X_i) - Freq_M(X_i)]^2}{Freq(X_i)f},$$

where y is the number of fitted parameters (here 6), z the total number of bins (here 100) and $Freq$ and $Freq_M$ represent the frequency of data falling into bin i in either the data ($Freq$) or the prediction ($Freq_M$), respectively. The calculation of chi-squared considered only data bins in which at least one data point is present. The software for dPDA is available free of charge upon request.

Monte-Carlo simulations of camera-based, single-molecule FRET experiments

The Monte-Carlo simulations were performed using custom written C/C++ software developed to resemble single-molecule experiments as closely as possible. The software was described previously,^{13,19} but updated to allow the simulation of conformational dynamics faster than the acquisition time of the camera. Discrete time steps of 100 μ s were used in which 150 randomly distributed particles would fluoresce and undergo conformational changes resulting in time dependent changes in their FRET efficiencies. We used forward and backward rates set to $k_{oc} = k_{co} = 200 \text{ s}^{-1}$ leading to a lifetime of 5 ms for each conformational states. Each simulated movie consisted of 1000 frames. The simulated frame time of the camera was set to 50 ms and the excitation time was chosen to be between 1 ms and 50 ms. We simulated an area of 512 by 340 pixel with a virtual pixel size of 130 nm, representing the dimensions of the field of view under experimental conditions. The intensity profile around each molecule position is assumed to be Gaussian in x and y direction and the characteristic width of the point spread function was set to 130 nm for donor and to 150 nm for acceptor fluorophores. We set the brightness to 250 photons

per molecule per excitation period for donor and emission after donor excitation and 100 photons per molecule per excitation period for acceptor emission after acceptor emission, values which are achievable under experimental conditions. For the simulated data, we set the Förster radius R_0 to 6 nm and the corresponding distances between donor and acceptor fluorophore to 7 nm for the open and to 5 nm for the closed conformation. The leakage describing the probability of detecting photons emitted from the donor in the acceptor detection channel due to the spectral characteristics of the fluorophores and the experimental setup was set to 0.1. The quantum yield of each fluorophore was set to unity. Gaussian distributed background noise was added as follows with a mean value of 4 photons for the donor excitation, donor detection channel (DD channel), 5 photons for the donor excitation, acceptor emission channel (DA channel), 2 photons for the acceptor excitation donor emission channel (AD, which does not contain any further signal and is therefore excluded from further considerations), and 6 photons for the acceptor excitation acceptor emission channel (AA channel). The standard deviation of all background noise was set to 2 photons per pixel. Albeit possible in the simulation, we did not simulate other fluorophore properties such as blinking, bleaching and potential direct excitation of the acceptor by the laser used for donor excitation.

SIMULATION RESULTS

sALEX: Identification of conformational dynamics in the millisecond time range

We started exploring the potential of sALEX to resolve conformational dynamics by running a set of Monte Carlo simulations using parameters closely resembling experimental conditions and

constrains. The main advantage of simulating single-molecule FRET microscopy is that the rates of the conformational changes can be directly set and later be compared to the results obtained from fitting the FRET efficiency histograms by dPDA. For the set of five simulations presented (Fig. 2), we varied the duration of the excitation per frame from 50 ms to 1 ms but kept all remaining parameters constant. Two consecutive frames of the simulated raw data (3 ms excitation time) show the two detection channels after donor excitation (Fig. 2a; DD and DA) and after acceptor excitation (Fig. 2b; AA). Individual particles are visible and those are then analysed to obtain individual time traces and FRET efficiencies. For conformational rates of 200 s^{-1} , an excitation duration of 50 ms during a 50 ms acquisition frame time led to severe averaging of the FRET efficiencies yielding a single, albeit broadened, FRET distribution centred around $E^* \sim 0.55$ (Fig. 2c, top). Only using an illumination shorter than the lifetime of the respective conformational states ($1/200 \text{ s}^{-1} = 5 \text{ ms}$) led to the appearance of two global maxima that can be attributed to the open and the closed conformation of the simulated molecules. In fact, exciting the molecules for 1 ms shows two clearly distinguishable species with only limited temporal averaging between them (Fig. 2c, bottom). We plotted single-molecule time trajectories for 50 ms (Fig. 2d) and 3 ms excitation time (Fig. 2e), respectively. As expected, the trajectories of DD, DA and E^* in the case of a 3 ms excitation time show fluctuations with larger amplitudes than for 50 ms excitation time.

In the simulations we have not included any intermolecular heterogeneity; all molecules undergo conformational changes with dynamics defined by the rate constants. In our experience, this is rarely the case for experimental data in which intermolecular heterogeneity is often present and has to be carefully addressed to avoid “cherry picking” which might lead to biased data interpretation. Here we suggest to use a threshold criterion that is based on calculating the

standard deviation of all FRET frames measured for each molecule similar to burst variance analysis in confocal microscopy.¹⁹ For the simulated data (Fig. 2b, 3 ms excitation), we plotted the pseudo-colour coded, one dimensional FRET histogram for each molecule showing the expected homogeneity for the simulations (Fig. 3a top panel). For each single time trace, we calculated the standard deviation of all FRET values. Whereas the exact value depends on the FRET peak positions in the FRET histogram and the overall photon count rate per frame, all standard deviation values are here equally centred around 0.2 confirming the homogeneity in the simulated sample. As we will show for the experimental data, non-interconverting molecules can be identified and excluded from further analysis as their standard deviation of FRET values is considerably lower. Taken together, Monte Carlo simulations reveal that the enhanced time resolution of sALEX improves our capabilities of identify heterogeneity in FRET samples.

dPDA: Quantifying conformational dynamics in the millisecond time range

For the simulations, we set the rates of the interconversions to 200 s^{-1} , which we now aim to recover by analysing the FRET efficiency histograms using dynamic probability distribution analysis (dPDA). We took the simulated data using the 3 ms excitation and chose the following initial guesses ${}^iE^*_o = 0.2$, ${}^iE^*_c = 0.8$, ${}^i k_{oc} = 150 \text{ s}^{-1}$, ${}^i k_{co} = 250 \text{ s}^{-1}$ and ${}^i\sigma_o = {}^i\sigma_c = 0.06$ for further optimization. The initial peak positions and rates were chosen such that they deviate significantly from the final fit. After fitting, we obtained $E^*_o = 0.352 \pm 0.001$, $E^*_c = 0.773 \pm 0.002$, $k_{oc} = (205 \pm 6) \text{ s}^{-1}$, $k_{co} = (205 \pm 6) \text{ s}^{-1}$ and $\sigma_o = 0.055 \pm 0.003$ and $\sigma_c = 0.049 \pm 0.003$ with $\chi^2 = 1.4$ representing an excellent fit with small residuals (Fig. 3b). Whereas the peak position can be visually verified and the excess width can be estimated for the simulations as discussed above, the influence of both rates on the shape of the predicted FRET efficiency histogram is more difficult to assess. Therefore, we fixed the peak positions and the excess widths to the values

obtained from the fit and asked, how the χ^2 values change for systematically altered rate constants without running the optimization algorithm (Fig. 3c). If we consider a $\chi^2 < 5$ as a reasonable approximation of the data using a dPDA prediction, we find that the minimization surface yields rates of $k_{oc} = k_{co} = (200 \pm 30) \text{ s}^{-1}$ in excellent agreement with the simulated rates. Fits of the FRET efficiency histograms for the cases of 10 ms and 1 ms excitation also show excellent agreement with the simulated data and can be found in Supplementary Figure 1.

Finally, we used the six parameters obtained from the original fit of the simulated 3 ms data (Fig. 2b and Fig. 3b) to predict the FRET histogram (black stairs) in the case of a 50 ms excitation period (Fig. 3d). As shown before, the simulated data shows a single peak due to the averaging effect of quickly interconverting FRET species. The predicted histogram resembles the data reasonably well ($\chi^2 = 3.8$) matching both the mean peak position and the general shape and width of the histogram. The residuals and the PDA prediction show a larger jump at $E^* = 0.5$, which is likely to be an artefact of histogramming E^* values calculated from low integer values representing the two detection channels after excitation of the donor. Fitting the single peak with a model of interconverting FRET species is possible albeit not recommended as the six parameters used for building the PDA model would still require constraints derived from fitting the sALEX data to stay within a reasonable value space. Nevertheless, the non-fitted PDA prediction allows to visually confirm the accuracy of values obtained from fitting sALEX data.

dPDA and sALEX for strongly biased equilibria

In order to test the ability of recovering rates in systems which are strongly biased towards one conformation, we set up a simulation using a forward rate of $k_{oc} = 5 \text{ s}^{-1}$ (lifetime of 200 ms) and a backward rate of $k_{co} = 200 \text{ s}^{-1}$ (lifetime of 5 ms). All other parameters were kept as described

previously. The resulting FRET histogram assuming an excitation of 3 ms is shown in Supplementary Figure 2. In our simulated case, the equilibrium ratio is $k_{co} / k_{oc} = 40$ and we therefore expect that the molecules are populating primarily the closed conformation. Even though sPDA is in principle capable of retrieving the rates with $k_{co} = (216 \pm 15) \text{ s}^{-1}$ and $k_{oc} = (7 \pm 2) \text{ s}^{-1}$ ($\chi^2 = 9.1$), any experimental validation of systems featuring equilibrium ratios of larger than around 20, in which, on average, 95% of molecules would be in one conformational state and 5% in another state, is challenging and often simply limited by the uniformity and purity of the sample.

EXPERIMENTAL RESULTS USING DNA HAIRPINS

For the experimental realization of sALEX and application of dPDA, we decided to use simple DNA hairpin molecules labelled with both donor and acceptor fluorophores. By changing the concentration of salt (here NaCl) in the buffer medium, the conformational equilibrium of DNA hairpins can be tuned.^{34–36,41} We chose a DNA hairpin in which the template DNA showed a self-complementarity of 6 neighboured bases designed to open and close rapidly compared to the frame time of our camera (50 ms). At zero salt concentration, the DNA construct fully populated a low FRET species ($E^* \sim 0.16$) indicating the open form of the DNA hairpin (Fig. 4a, top panel). The sALEX data showed a very similar distribution characterised by the same peak position ($E^* \sim 0.16$) and the same shape of the distribution (Fig. 4b, top panel). Upon addition of salt, the peak position of the main distribution in the 50 ms data shifted gradually from the FRET efficiency indicating the open conformation ($E^* \sim 0.20$) to a FRET efficiency ($E^* \sim 0.76$) indicating the closed conformation (Fig. 4a). Whilst shifting, the width of the distribution

changed reaching its maximum at a salt concentration of around 300 mM NaCl. Only at 400 mM NaCl and above, two underlying species with varying peak positions can be identified.

For salt concentrations above 100 mM NaCl, the FRET efficiency histograms of the sALEX data started to differ from the conventional ALEX data as the two main populations representing the open and the closed conformation of the hairpin can now be clearly identified and distinguished in every histogram (Fig. 4b). With increasing salt concentrations the conformational equilibrium shifted towards the closed conformation. Whereas the main peak position of the closed conformation is constant for all concentrations above 100 mM NaCl ($E^*_c \sim 0.76$), we note a peak shift of the open conformation from $E^*_o \sim 0.20$ to a FRET efficiency ($E^*_o \sim 0.29$) consistent with reports describing a compaction of single stranded DNA due to electrostatic screening.⁴²

To prove the high signal to noise ratio obtainable at short excitation times, we plotted individual frames without any additional averaging after green and red excitation, respectively (Fig. 5a+b). Both images allow the identification and subsequent determination of photon counts for single molecules. Before continuing with the determination of rates using dPDA, we note that the histograms in Figure 4a at NaCl concentrations of 300 mM showed a small shoulder at around $E^* \sim 0.20$ which cannot be entirely explained by averaging effects due to fast dynamics. Here, we observed the influence of non-converting DNA hairpins which are stuck in the open conformation. For better visualisation and characterisation, we plotted the one dimensional, colour-coded FRET efficiency histograms of every analysed molecule and calculated the corresponding standard deviation from the time traces of the FRET efficiencies (Fig. 5c). Whereas most molecules show low and high FRET values, some (see arrows) show mainly a single conformation leading to lower standard deviations of the analysed individual time traces. Additionally, we plotted individual time traces of a single molecule (Fig. 5d) confirming the

experimental realisation of the parameters such as the photon counts chosen for the simulations in Figure 2 and 3.

Due to the low standard deviation calculated from the FRET efficiency time traces of some molecules seen in Figure 5c we decided to apply an additional threshold of $std(E^*_{\text{trace}}) > 0.1$ to identify traces of non-interconverting DNA hairpins and exclude them from further analysis. The filtered histogram (3 ms, 300 mM NaCl, Fig. 5e) shows only a marginal difference in the relative peak heights of the closed and the open conformation to the corresponding histogram in Figure 4b. For the PDA fitting, we chose the following starting values ${}^iE^*_o = 0.25$, ${}^iE^*_c = 0.75$, ${}^i k_{oc} = 100 \text{ s}^{-1}$, ${}^i k_{co} = 200 \text{ s}^{-1}$ and ${}^i \sigma_o = {}^i \sigma_c = 0.06$ and obtained $E^*_o = 0.217 \pm 0.002$, $E^*_c = 0.764 \pm 0.003$, $k_{oc} = (117 \pm 4) \text{ s}^{-1}$, $k_{co} = (188 \pm 6) \text{ s}^{-1}$ and $\sigma_o = 0.087 \pm 0.002$ and $\sigma_c = 0.069 \pm 0.004$ with $\chi^2 = 2.0$ representing again an excellent fit with small residuals (Fig. 5e). Similar to the procedure discussed for the simulations, we fixed the positions and the excess widths and calculated the χ^2 characterising the goodness of the PDA prediction as a function of various forward and backward rates giving $k_{oc} = (120 \pm 20) \text{ s}^{-1}$ and $k_{co} = (195 \pm 30) \text{ s}^{-1}$ (Fig. 5f). The results from analysing the conformational rates show for increasing concentrations of NaCl that the rates of the open to close transition increase whereas the rates of the closed to open transition decrease (Figure 6 and Fig. S1 for the individual dPDA fits) thereby qualitatively and quantitatively agreeing with observations of a similar DNA hairpin structure.³⁵

DISCUSSION

We characterised the ability of sALEX and dPDA to identify and quantify conformational dynamics of biomolecules by means of simulations and experimental data. With the simulations

we established a comprehensive framework in which a variety of parameters such as conformational rates and distances between the fluorophores can easily be modified allowing to visualise the effect of those parameters on the shape of FRET efficiency histograms. Even without using sALEX for improving the time resolution, the simulations allow realistic predictions of experimentally obtainable data as the simulations explicitly consider sources of noise leading to a significant broadening of FRET distributions in TIRF microscopy.¹³ We demonstrated that the stroboscopic alternating laser excitation has a dramatic effect on the shape of the FRET histograms of simulated interconverting species (Fig. 2c). By reducing the duration of the excitation (1 ms or 3 ms) below the simulated lifetime of each conformational state (here 5 ms), we identified the two species whose FRET distributions are otherwise averaged out. As mentioned previously, we should emphasize that by reducing the excitation time below the frame time of the camera required to read and write the data, we lose information about the species between the periods of excitation. This information is largely irrelevant for the case of species in a conformational equilibrium, but has to be considered in cases where reactions such as DNA synthesis are studied.⁴³

By recording snapshots of conformational states from individual molecules over extended periods of time, we introduced the analysis of the standard deviation of FRET efficiencies as a convenient way to identify inter molecular heterogeneity (Fig. 2a and Fig. 4c). In our case, we simply used a threshold criterion to exclude molecules from further analysis which did not undergo conformational changes. We suggest to use a value in the order of twice the theoretically calculated standard deviation introduced in equation 1. A more detailed analysis of the FRET standard deviation using, for example, sliding windows of a few frames could be used

to analyse other sources of dynamic heterogeneity in single entities such as pausing mechanisms in proteins and enzymes.

For analysing the underlying conformational dynamics in FRET efficiency histograms we implemented dynamic probability distribution analysis in TIRF microscopy. Our simulated data showed, that dPDA can accurately recover simulated conformational rates and that dPDA is therefore a promising tool to extract rates from experimental data. It should be noted that dPDA requires some temporal averaging to determine the rates of interconversions; if two species would be entirely separated in the FRET histogram, we could still provide an upper limit for the underlying rates as we can predict at which rates averaging effects would start to occur.

Along the same lines, the accuracy of the conformational analysis using dPDA benefits from well separated FRET peaks representing the two conformations which can, for dynamic species, be ensured by a sufficiently short excitation and a careful design of the FRET construct leading to relative changes in the donor to acceptor distances above 1 nm. Furthermore, the equilibrium ratio between the two species here defined as k_{co} / k_{oc} should be ideally kept around one to avoid cases in which dynamic heterogeneity of a small subset of molecules might severely bias dPDA analysis.

We note that dPDA can be expanded allowing analysis of species interconverting between more than two conformational states as well as combining dynamic and static species in a single sample.

We experimentally demonstrated an effective time resolution of 3 ms for a dynamic system of an interconverting DNA hairpin. The same stem sequence of six complementary bases (5' TGG ATT) which we used for our experiments has recently been used by Tsukanov et al.³⁵ who obtained opening and closing rates of $\sim 200\text{s}^{-1}$ at a salt concentration of 300 mM NaCl

comparable to our results of $k_{oc} = (117 \pm 4) \text{ s}^{-1}$ and $k_{co} = (188 \pm 6) \text{ s}^{-1}$. Differences in the determined rates can be explained by our choice of a different donor fluorophore (Cy3B instead of ATTO 550) and different labelling positions as it has been shown that both can have a substantial influence on the conformational rates of DNA hairpins.^{34,44} Similar to the experiments by Tsukanov et al., we observed a decrease of the opening and an increase of the closing rate with increasing concentrations of NaCl. The main advantage of our imaging-based implementation is that it takes only tens of seconds to record the same amount of data that would take tens of minutes (or longer) in confocal microscopy.

Our dPDA fits showed (Fig. S1 and also Fig. 6) larger χ^2 values for conditions in which the DNA hairpin is primarily either in the open or the closed conformation, indicating that dPDA works most reliable if two global peak positions can be seen in the FRET efficiency histogram and both rates are close to each other. In our current experimental implementation, we concentrated on characterizing conformational dynamics that lead to changes in FRET efficiency under equilibrium conditions.

To obtain a broader overview about potential applications of sALEX, two points should be discussed. Firstly, as long as one is mainly interested in detecting FRET efficiencies, stroboscopic excitation of the acceptor fluorophore is not required as the stoichiometry parameter is only used to identify molecules bearing both donor and acceptor fluorophore. As recently suggested²¹, however, combining protein induced fluorescence enhancement^{45,46} with single-molecule FRET could generate applications in which the time dependent change in stoichiometry would benefit from increasing the time resolution using stroboscopic excitation. Secondly, our current implementation requires that the molecules of interest are stationary. Whereas the immobilisation of DNA is mostly uses Biotin-Neutravidin linkage to biotinylated PEG crafted on

the glass surface⁴⁷, immobilising proteins requires either vesicle encapsulation^{48,49} or the use of biotinylated, anti-His5/His6-tag antibodies.⁵⁰

Finally, if we consider the experimentally shown time-resolution of 3 ms as feasible, where is the current technological limit? Our main experimental limitation was the laser power of the green laser (<50 mW before entering the TIRF objective), which prevented us from increasing the time resolution whilst keeping the number of detected photons per excitation period constant. More powerful lasers could help to improve the time resolution further, but ultimately the achievable time resolution is limited by the photostability and the photon count rate of the organic fluorophores. Recent developments in recipes for photo protection such as oxygen scavengers in combination with triplet state quencher reviewed in references,^{51,52} or “self-healing” dyes^{53,54} will help to push the number of photons detectable from single emitters further. Another promising technique in single-molecule detection is the use of nano-antennas which has been shown to increase the achievable count rate of organic fluorophores by up to two orders of magnitude.⁵⁵

We expect sub-millisecond dynamics to become resolvable in TIRF microscopy especially considering that dPDA allows to analyse distributions of FRET efficiencies in which considerable temporal averaging took place pushing the effective time resolution even below the duration of excitation.

CONCLUSION

The ability to resolve and characterize conformational dynamics of individual molecules under equilibrium conditions defines single molecule FRET as a powerful technique to study

biologically relevant molecules and proteins. Here, we presented two techniques, stroboscopic alternating laser excitation and dynamic probability distribution analysis for TIRF microscopy, which in combination allow the characterization of conformational dynamics in the 1-20 ms time range. Our sALEX excitation configuration can be easily implemented in existing setups by using, for example, acousto-optical modulators (AOTFs) that allow modulating the intensity of laser sources. Since we used a camera-based implementation that uses the full field of view of the camera instead of relying on cropping or pixel-binning to achieve higher time resolution, hundreds of molecules can be detected in parallel over extended periods. We believe that further developments improving the longevity of fluorophores as well as new technical advances in image acquisition combined with sALEX and dPDA will help to broaden the range of possible applications in single-molecule detection.

ACKNOWLEDGMENTS

The authors thank Joseph Torella for providing early versions of the PDA software and Jan-Willem Borst, Arjen Bader and Carel Fijen for critically reading the manuscript and providing helpful comments. S.F. is supported by the Netherlands Organization for Scientific Research (NWO) via a FOM (Foundation for Fundamental Research on Matter) grant awarded to Herbert van Amerongen, Wageningen University. J.H. acknowledges support from a Marie Curie Career Integration Grant (#630992).

REFERENCES

- 1 J. Hohlbein, K. Gryte, M. Heilemann and A. N. Kapanidis, *Phys. Biol.*, 2010, **7**, 031001.
- 2 C. Joo, H. Balci, Y. Ishitsuka, C. Buranachai and T. Ha, *Annu. Rev. Biochem.*, 2008, **77**, 51–76.
- 3 W. E. Moerner, *Proc. Natl. Acad. Sci. USA*, 2007, **104**, 12596–12602.
- 4 S. Farooq, C. Fijen and J. Hohlbein, *Protoplasma*, 2013, **251**, 317–322.
- 5 J. Hohlbein, L. Aigrain, T. D. Craggs, O. Bermek, O. Potapova, P. Shoolizadeh, N. D. F. Grindley, C. M. Joyce and A. N. Kapanidis, *Nat. Commun.*, 2013, 2131.
- 6 S. Preus and L. M. Wilhelmsson, *ChemBioChem*, 2012, 1990–2001.
- 7 S. Weiss, *Science*, 1999, **283**, 1676–1683.
- 8 S. Kalinin, T. Peulen, S. Sindbert, P. J. Rothwell, S. Berger, T. Restle, R. S. Goody, H. Gohlke and C. A. M. Seidel, *Nat. Meth.*, 2012, **9**, 1218–1225.
- 9 A. Muschielok, J. Andrecka, A. Jawhari, F. Brückner, P. Cramer and J. Michaelis, *Nat. Meth.*, 2008, **5**, 965–971.
- 10K. A. Henzler-Wildman, V. Thai, M. Lei, M. Ott, M. Wolf-Watz, T. Fenn, E. Pozharski, M. A. Wilson, G. A. Petsko, M. Karplus, C. G. Hubner and D. Kern, *Nature*, 2007, **450**, 838–844.
- 11Y. Santoso, J. P. Torella and A. N. Kapanidis, *ChemPhysChem*, 2010, **11**, 2209–2219.
- 12N. Walter, C. Huang, A. Manzo and M. Sobhy, *Nat. Meth.*, 2008, **5**, 475–489.
- 13S. J. Holden, S. Uphoff, J. Hohlbein, D. Yadin, L. Le Reste, O. J. Britton and A. N. Kapanidis, *Biophys. J.*, 2010, **99**, 3102–3111.
- 14D. Axelrod, T. Burghardt and N. Thompson, *Annu. Rev. Biophys. Bio.*, 1984, **13**, 247–268.
- 15S. Tyagi, V. VanDelinder, N. Banterle, G. Fuertes, S. Milles, M. Agez and E. A. Lemke, *Nat. Meth.*, 2014, **11**, 297–300.

- 16 J.-Y. Kim, C. Kim and N. K. Lee, *Nat. Commun.*, 2015, **6**.
- 17 H. S. Chung, K. McHale, J. M. Louis and W. A. Eaton, *Science*, 2012, **335**, 981–984.
- 18 L. Olofsson, S. Felekyan, E. Doumazane, P. Scholler, L. Fabre, J. M. Zwier, P. Rondard, C. A. M. Seidel, J.-P. Pin and E. Margeat, *Nat Commun*, 2014, **5**.
- 19 J. P. Torella, S. J. Holden, Y. Santoso, J. Hohlbein and A. N. Kapanidis, *Biophys. J.*, 2011, **100**, 1568–1577.
- 20 Y. Santoso, C. M. Joyce, O. Potapova, L. Le Reste, J. Hohlbein, J. P. Torella, N. D. F. Grindley and A. N. Kapanidis, *Proc. Natl. Acad. Sci. USA*, 2010, **107**, 715–720.
- 21 J. Hohlbein, T. D. Craggs and T. Cordes, *Chem. Soc. Rev.*, 2014, **43**, 1156–1171.
- 22 A. N. Kapanidis, N. K. Lee, T. A. Laurence, S. Doose, E. Margeat and S. Weiss, *Proc. Natl. Acad. Sci. USA*, 2004, **101**, 8936–8941.
- 23 N. K. Lee, A. N. Kapanidis, Y. Wang, X. Michalet, J. Mukhopadhyay, R. H. Ebright and S. Weiss, *Biophys. J.*, 2005, **88**, 2939–2953.
- 24 T. Laurence, X. Kong, M. Jager and S. Weiss, *Proc. Natl. Acad. Sci. USA*, 2005, **102**, 17348–17353.
- 25 B. K. Müller, E. Zaychikov, C. Bräuchle and D. C. Lamb, *Biophys. J.*, 2005, **89**, 3508–3522.
- 26 J. Elf, G.-W. Li and X. S. Xie, *Science*, 2007, **316**, 1191–1194.
- 27 C. Flors, J. Hotta, H. Uji-i, P. Dedecker, R. Ando, H. Mizuno, A. Miyawaki and J. Hofkens, *J. Am. Chem. Soc.*, 2007, **129**, 13970–13977.
- 28 S. Blumberg, A. Gajraj, M. W. Pennington and J.-C. Meiners, *Biophys. J.*, 2005, **89**, 1272–1281.
- 29 E. Nir, X. Michalet, K. M. Hamadani, T. A. Laurence, D. Neuhauser, Y. Kovchegov and S. Weiss, *J. Phys. Chem. B*, 2006, **110**, 22103–22124.

- 30 M. Antonik, S. Felekyan, A. Gaiduk and C. A. M. Seidel, *J. Phys. Chem. B*, 2006, **110**, 6970–6978.
- 31 S. Kalinin, S. Felekyan, M. Antonik and C. A. M. Seidel, *J. Phys. Chem. B*, 2007, **111**, 10253–10262.
- 32 S. Kalinin, A. Valeri, M. Antonik, S. Felekyan and C. A. M. Seidel, *J. Phys. Chem. B*, 2010, **114**, 7983–7995.
- 33 S. Felekyan, H. Sanabria, S. Kalinin, R. Kühnemuth and C. A. M. Seidel, in *Methods in Enzymology*, ed. Sergey Y. Tetin, Academic Press, 2013, vol. Volume 519, pp. 39–85.
- 34 A. Hartmann, G. Krainer and M. Schlierf, *Molecules*, 2014, **19**, 13735–13754.
- 35 R. Tsukanov, T. E. Tomov, Y. Berger, M. Liber and E. Nir, *J. Phys. Chem. B*, 2013.
- 36 M. I. Wallace, L. Ying, S. Balasubramanian and D. Klenerman, *J. Phys. Chem. B*, 2000, **104**, 11551–11555.
- 37 S. A. McKinney, C. Joo and T. Ha, *Biophys. J.*, 2006, **91**, 1941–1951.
- 38 S. Uphoff, K. Gryte, G. Evans and A. N. Kapanidis, *ChemPhysChem*, 2011, **12**, 571–579.
- 39 S. Kalinin, E. Sisamakidis, S. Magennis, S. Felekyan and C. Seidel, *J. Phys. Chem. B*, 2010, **114**, 6197–6206.
- 40 M. I. A. Lourakis, *levmar: Levenberg-Marquardt nonlinear least squares algorithms in C/C++*, 2004.
- 41 R. Tsukanov, T. E. Tomov, R. Masoud, H. Drory, N. Plavner, M. Liber and E. Nir, *J. Phys. Chem. B*, 2013, **117**, 11932–11942.
- 42 M. C. Murphy, I. Rasnik, W. Cheng, T. M. Lohman and T. Ha, *Biophysical Journal*, 2004, **86**, 2530–2537.

- 43 T. D. Christian, L. J. Romano and D. Rueda, *Proc Natl Acad Sci USA*, 2009, **106**, 21109–21114.
- 44 W. Kügel, A. Muschielok and J. Michaelis, *ChemPhysChem*, 2012, **13**, 1013–1022.
- 45 H. Hwang, H. Kim and S. Myong, *Proc. Natl. Acad. Sci. USA*, 2011, **108**, 7414–7418.
- 46 H. Hwang and S. Myong, *Chem. Soc. Rev.*, 2013.
- 47 R. Lamichhane, A. Solem, W. Black and D. Rueda, *Methods*, 2010, **52**, 192–200.
- 48 E. Boukobza, A. Sonnenfeld and G. Haran, *J. Phys. Chem. B*, 2001, **105**, 12165–12170.
- 49 B. Okumus, T. J. Wilson, D. M. J. Lilley and T. Ha, *Biophys. J.*, 2004, **87**, 2798–2806.
- 50 R. Zhou, S. Kunzelmann, M. R. Webb and T. Ha, *Nano Lett.*, 2011, **11**, 5482–5488.
- 51 T. Ha and P. Tinnefeld, *Ann. Rev. Phys. Chem.*, 2012, **63**, 595–617.
- 52 Q. Zheng, M. F. Juette, S. Jockusch, M. R. Wasserman, Z. Zhou, R. B. Altman and S. C. Blanchard, *Chem. Soc. Rev.*, 2013.
- 53 R. B. Altman, Q. Zheng, Z. Zhou, D. S. Terry, J. D. Warren and S. C. Blanchard, *Nat. Meth.*, 2012, **9**, 428–429.
- 54 J. H. M. van der Velde, E. Ploetz, M. Hiermaier, J. Oelerich, J. W. de Vries, G. Roelfes and T. Cordes, *ChemPhysChem*, 2013, **14**, 4084–4093.
- 55 G. P. Acuna, F. M. Möller, P. Holzmeister, S. Beater, B. Lalkens and P. Tinnefeld, *Science*, 2012, **338**, 506–510.

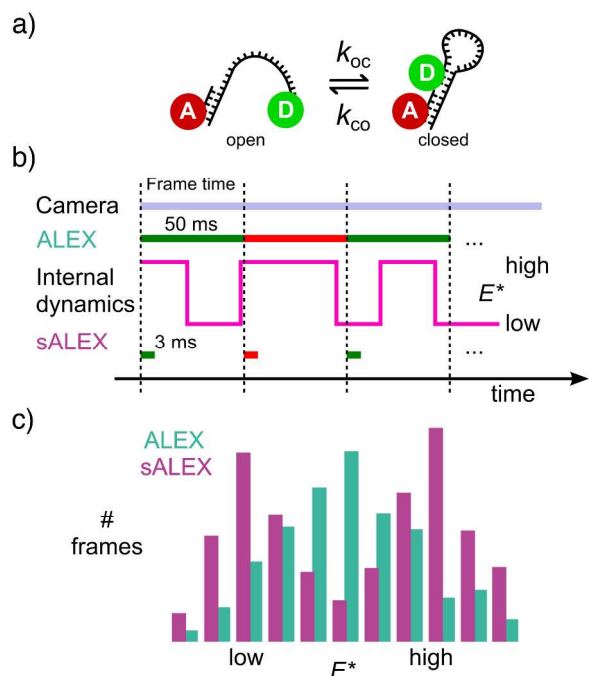


Figure 1. Conceptual framework of stroboscopic alternating-laser excitation (sALEX). **(a)** Scheme of a fluorescently labelled DNA hairpin undergoing conformational changes between a low FRET (open) and a high FRET state (closed). **(b)** The maximum frame rate of the camera used for fluorescence detection imposes an upper limit of the achievable time resolution in smFRET TIRF microscopy. Whereas in conventional ALEX the direct excitation of either donor or acceptor dye takes place for the entire duration of each frame, the excitation of the donor is limited to a short interval within each frame using sALEX. **(c)** The histogram of FRET efficiencies of a system undergoing conformational changes shows an averaged peak for FRET dynamics that are significantly faster than the corresponding frame time (ALEX). Both conformational states can be resolved if the duration of excitation is shortened than the lifetime of the states (sALEX).

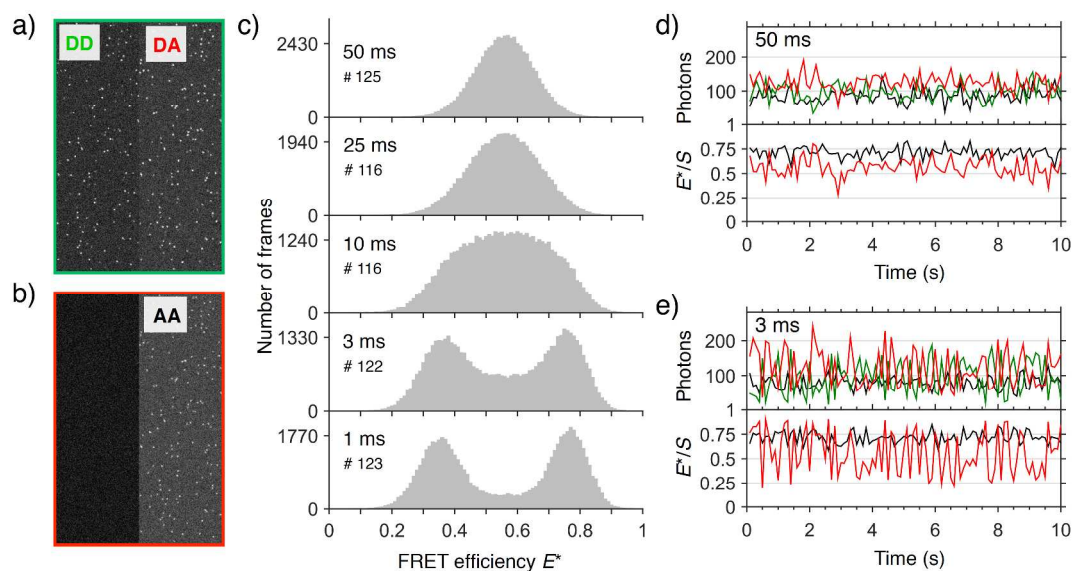


Figure 2. Simulations. Stroboscopic alternating-laser excitation (sALEX) in smFRET TIRF microscopy. Complete movies were simulated using parameters closely resembling experimental conditions. The conformational dynamics of the FRET species were simulated using a forward and backward rate of $k_{oc} = k_{co} = 200 \text{ s}^{-1}$, respectively. The frame rate of the camera was set to 20 Hz. **(a+b)** Simulated individual frames after **(a)** green and **(b)** red excitation shown for a 3 ms excitation time. FRET is shown via simultaneous detection of molecules in the green (DD) and red (DA) detection channel after green excitation. **(c)** Histograms (100 bins) of transfer efficiencies ($E^* = DA / (DA + DD)$) from individual time traces after fitting all molecules. The respective excitation time and the number of molecules forming each histogram is indicated. For excitation times corresponding to the frame time of the camera (50 Hz), the underlying fast conformational changes are averaged out. Decreasing the excitation time leads to a separation of both FRET species. **(d+e)** Individual time traces for 50 ms **(d)** and 3 ms **(e)** excitation time. Upper panel: donor signal after donor excitation (green trace, DD), acceptor signal after donor excitation (red trace, DA), acceptor signal after acceptor excitation (black trace, AA). Lower

panel: transfer efficiencies (red trace, E^*) and stoichiometry (black trace, $S = DD + DA / (DD + DA + AA)$).

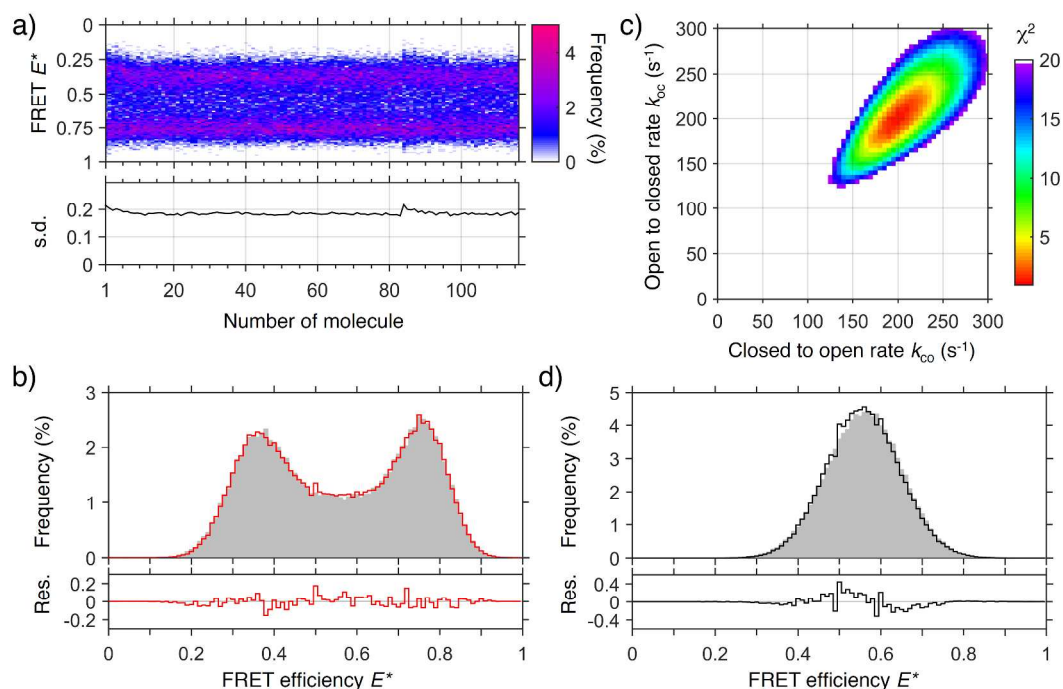


Figure 3. Simulations. Analysing conformational dynamics using dynamic probability distribution analysis (dPDA). **(a)** Top: Colour coded one-dimensional histograms of FRET efficiencies (E^*) plotted for each single simulated molecules (for the cumulated histogram of all molecules see Figure 2b: 3 ms excitation time and $k_{oc} = k_{co} = 200 \text{ s}^{-1}$) showing the expected homogeneity. Bottom: Standard deviation of the FRET efficiencies for each molecule. **(b)** The cumulated E^* histogram (grey bars; Figure 2b (3 ms excitation time) and fitted using a dynamic two-species model. After optimization based on a Levenberg-Marquardt algorithm, the final fit (red line) shows small residuals and yielded $k_{oc} = (205 \pm 6) \text{ s}^{-1}$ and $k_{co} = (205 \pm 6) \text{ s}^{-1}$ ($\chi^2 = 1.4$). **(c)** Plotted χ^2 values comparing the PDA model and the simulated data as a function of different forward and backward rates using the fitted peak positions and excess widths obtained in (c) as fixed parameters. **(d)** Visualization of the predicted histogram (black stairs) based on parameters obtained in (b) for a 3 ms excitation period plotted on top of the histogram of transfer efficiencies

obtained from simulated data with a 50 ms excitation period (grey bars) ($\chi^2 = 3.8$). No further fitting was performed.

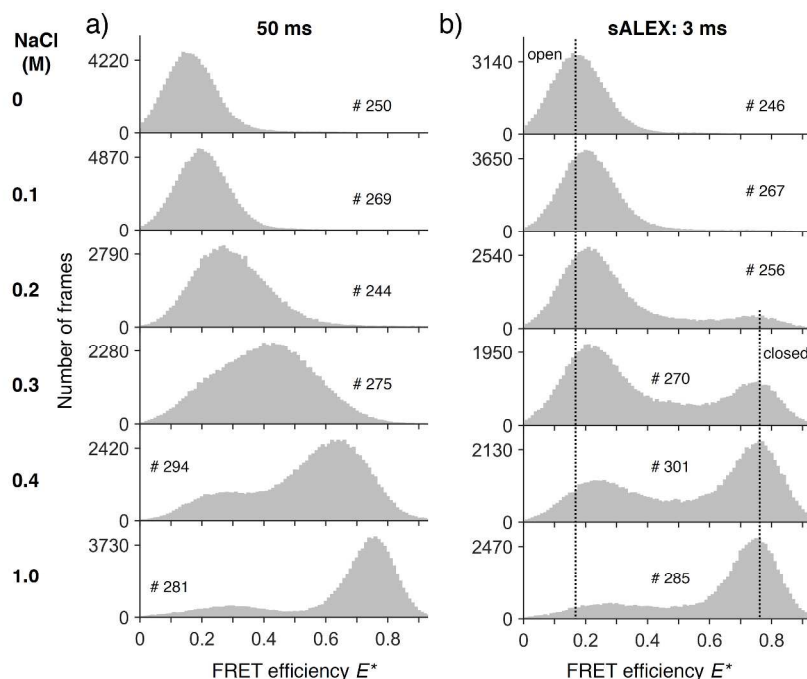


Figure 4. Experimental data. **(a + b)** Surface-immobilized DNA hairpins were measured as a function of different salt concentrations at different excitation times: 50ms (a) and 3 ms (b). The histograms (grey bars, 100 bins) of FRET efficiencies E^* were calculated from individual time traces after fitting all molecules. We indicated the number of molecules forming each histogram. Whereas for increasing salt concentrations the mean peak position shifts towards higher E^* for a 50 ms excitation time (a), only sALEX allows the identification of a dynamic equilibrium between an open and a closed conformation (b). The two dotted vertical lines in (b) mark the E^* values of the open conformation (E^*_{o} , ~ 0.16 M for 0 NaCl) and the closed conformation (E^*_{c} , ~ 0.76 for 0.2 to 1 M NaCl) FRET species. Upon addition of salt, the peak position of the open conformation shifts to higher FRET efficiencies as discussed in the main text.

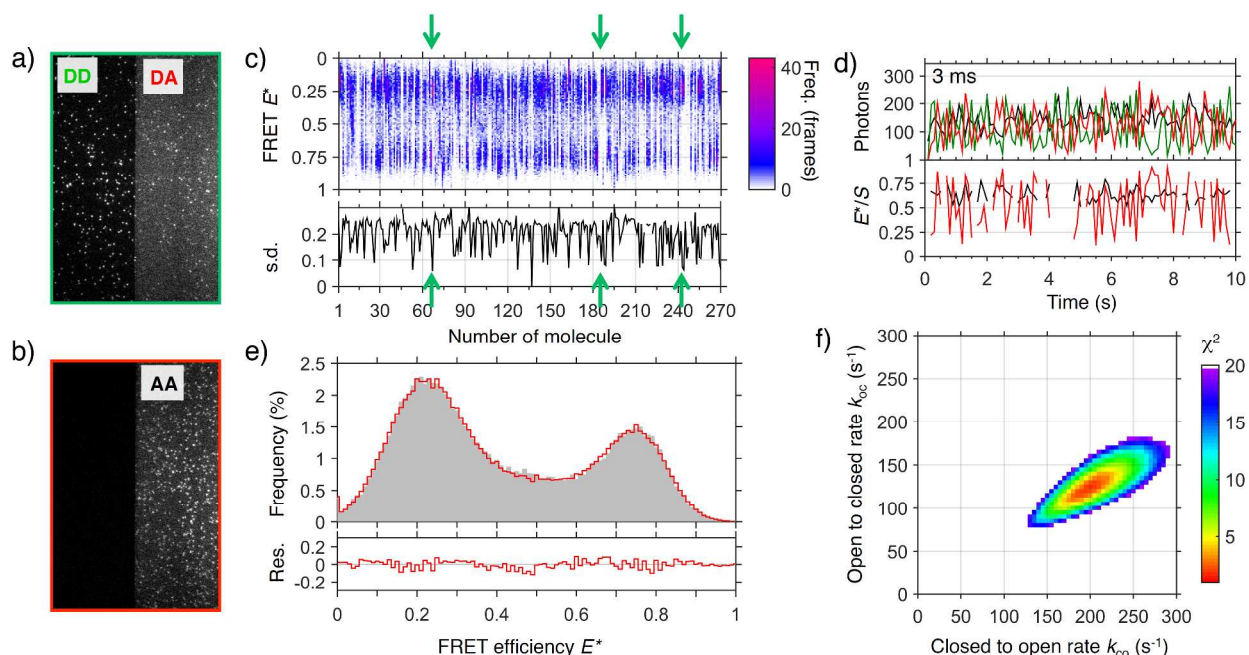


Figure 5. Experimental data using a 3 ms excitation time for a DNA hairpin in presence of 300mM NaCl. **(a+b)** Individual frames (343 by 512 pixel with a pixel size of 130 nm) after **(a)** green and **(b)** red excitation. **(c)** Top: Colour coded one-dimensional histograms of FRET efficiencies (E^*) from three movies plotted for each analysed molecules (for the cumulated histogram of all molecules see Figure 4b) showing heterogeneity between the molecules. Bottom: Standard deviations calculated from individual E^* time traces. Three representative molecules with a low standard deviation are indicated (arrows). **(d)** Individual time traces. Upper panel: donor signal after donor excitation (green trace, DD), acceptor signal after donor excitation (red trace, DA), acceptor signal after acceptor excitation (black trace, AA). Lower panel: transfer efficiencies (red trace, E^*) and stoichiometry (black trace, S). The gaps in the lower time traces are due to photon counts below the threshold of $DD + DA < 200$ and $AA < 50$ photons per frame. **(e)** The E^* histogram after additional filtering for molecules showing a standard deviation of their FRET time trace above 0.1 was fitted using a dynamic two-species model. After optimization, the final fit (red line) shows small residuals and yielded $k_{oc} = (117 \pm$

4) s^{-1} , $k_{co} = (188 \pm 6) s^{-1}$ ($\chi^2 = 2.0$). **(f)** Plotted χ^2 values comparing the PDA model and the experimental data as a function of different forward and backward rates using the fitted peak positions and excess widths obtained in (e) as fixed parameters.

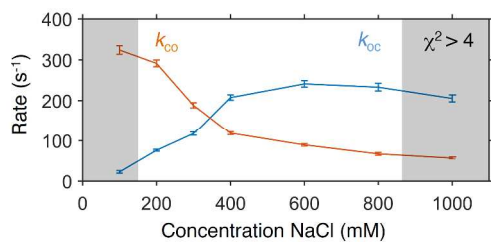


Figure 6. Conformational dynamics of a DNA hairpin under different concentrations of NaCl. Rates were obtained by fitting histograms of FRET efficiencies with dPDA as discussed in the text. For the individual FRET histograms and the corresponding fits see Figure 5 and Supplementary Figure 3. The error bars represent 95% confidence intervals of the fit. The greyed area indicate fits with $\chi^2 > 4$.