

PCCP

Accepted Manuscript



This is an *Accepted Manuscript*, which has been through the Royal Society of Chemistry peer review process and has been accepted for publication.

Accepted Manuscripts are published online shortly after acceptance, before technical editing, formatting and proof reading. Using this free service, authors can make their results available to the community, in citable form, before we publish the edited article. We will replace this *Accepted Manuscript* with the edited and formatted *Advance Article* as soon as it is available.

You can find more information about *Accepted Manuscripts* in the [Information for Authors](#).

Please note that technical editing may introduce minor changes to the text and/or graphics, which may alter content. The journal's standard [Terms & Conditions](#) and the [Ethical guidelines](#) still apply. In no event shall the Royal Society of Chemistry be held responsible for any errors or omissions in this *Accepted Manuscript* or any consequences arising from the use of any information it contains.



Journal Name

ARTICLE

Stabilization of DNA liquid crystals on doping with gold nanorods

Katarzyna Brach,^a Katarzyna Matczyszyn,^a Joanna Olesiak-Banska,^a Marta Gordeł^a and Marek Samoc^a

Received 00th January 20xx,
Accepted 00th January 20xx

DOI: 10.1039/x0xx00000x

www.rsc.org/

We report on the impact of doping with gold nanorods (NRs) on the formation and stability of DNA liquid crystals (LCs). Cetyl trimethylammonium (CTAB)-stabilized gold NRs were synthesized using the wet chemistry method. Different textures of cholesteric and columnar mesophases, as well as phase transitions, were observed using a polarized light microscope. It was found that liquid crystalline phases formed in the samples were qualitatively the same and the phase appearance sequence was preserved in the samples regardless of the doping. We show that, depending on the concentration of gold NRs present in the phase, nanoparticle-doped cholesteric and columnar hexagonal phases existed in wider temperature ranges compared to pure DNA LCs. The potential applications of these liquid crystalline-nanoparticle hybrid systems may include fabrication of new optoelectronic devices and sensors.

Introduction

Recently, the topic of nanoparticles dispersed in liquid crystalline matrices has been gaining considerable attention. Combining unique properties of nanoparticles with LC ability of self-assembly and mobility provides new opportunities for designing novel advanced functional materials, which could be used in the fields of electronics or optoelectronics.¹⁻³ Most of the described to date liquid crystalline-nanoparticles hybrid systems involved nematics,^{2,4} blue phases^{5,6} or lamellar⁷ phases doped with different types of nanostructures, including gold,⁷ semiconductor^{1,5} or ferroelectric² nanoparticles. Introduction of nanoparticles into LCs provides some crucial and desirable changes in LC characteristics, such as increase of the thermal stability,^{5,6} decrease of the threshold voltage for the Fréedericksz transition⁸ or increase of the dielectric anisotropy.⁹

There are only few papers concerning the topic of DNA LCs doped with gold nanoparticles.¹⁰⁻¹⁴ It is still quite unexplored area of research, where so far De Sio *et al.* proved that DNA LCs were able to organize gold NRs within DNA LCs deposited on a glass substrate by drop casting and allowed to dry,¹⁰ and Yevdokimov *et al.* showed the formation of linear clusters of small gold nanoparticles (with diameter around 2 nm) in a cholesteric liquid crystalline dispersion of DNA¹⁴.

However, the properties of a composite material consisting of gold NRs with strong plasmon resonances dispersed in DNA lyotropic LCs prepared in closed glass cells, where the type of observed phases and molecules organization is different

comparing to previously mentioned DNA LCs,¹⁰⁻¹⁴ have not been studied in detail yet. Lacaze *et al.* showed that it is possible to order small nanoparticles using smectic LCs¹⁵ and our intent was to check this ability for DNA LCs, but it is necessary to evaluate the basic properties of DNA LC – nanoparticle hybrid systems first. The advantage of using DNA as a material for nanoparticles ordering or trapping is that DNA may serve as a perfect self-organized flexible matrix or scaffolding, which is also environmentally friendly and biodegradable.¹⁶ The synergy between properties of a LC and nanoparticles may be highly beneficial for obtaining advanced functional materials with new and/or improved properties. Dispersing nanoparticles in LCs offers a simple method of tuning the physical properties of LCs without additional chemical modifications of mesogens, as well as provides an uncomplicated approach for ordering nanoparticles in two or three-dimensional structures. The research in the field of liquid crystalline nanocomposite materials can contribute to the development of a novel class of soft biomaterials with many possible applications in the field of photonic and electronic devices or metamaterials.

In this report, we investigate the properties of gold NRs-doped DNA cholesteric and columnar phases. The method of dispersing gold NRs in liquid crystalline matrix is described and the influence of nanostructures on the LC phase formation, texture appearance and thermal stability is presented. We compare pure DNA LCs and those doped with various amounts of gold NRs and nanoparticle stabilizing effect on the LCs. First, we evaluate the phase formation sequence and the textures observed under a polarized light microscope. Next, we check the phase transition temperatures in order to determine the effect of the NRs addition on the thermal stabilization of LC phases. We propose possible explanations for the differences

^a Advanced Materials Engineering and Modelling Group, Wrocław University of Technology, Wybrzeże Wyspińskiego 27, 50-370 Wrocław, Poland

found between the prepared systems. Finally, we present the conclusions of our work.

Materials and methods

Chemicals

Deoxyribonucleic acid sodium salt from salmon testes, $\text{HAuCl}_4 \cdot 3\text{H}_2\text{O}$ (99.9%), NaBH_4 (99%), ascorbic acid (AA) (99+%), CTAB (99%) and AgNO_3 (99+%) were purchased from Sigma Aldrich. All chemicals were used as received except when mentioned specifically. All solutions were prepared using Milli-Q water of resistivity not less than $18.2 \text{ M}\Omega \cdot \text{cm}$.

Sample preparation

Gold NRs were synthesized using a seed-mediated growth approach.¹⁷ Briefly, 3.5 nm gold seeds were prepared by adding gold salt solution to a reducing agent, freshly prepared ice-cold borohydride solution and CTAB as a capping agent. The next step consisted of the growth of NRs in silver nitrate solution, influencing rod-shaped nanoparticles formation, in the presence of AA and CTAB micelles. In order to separate the NRs from nanospheres the sample was centrifuged at 14 000 rpm.

The preparation of DNA LCs doped with gold NRs was preceded by DNA sonication with an ultrasonic homogenizer (Autotune Series High Intensity Ultrasonic Processor), which resulted in more homogenously sized DNA molecules (approximately 250 – 1000 bp). Highly concentrated DNA solutions ($C_{\text{DNA}} = 60 \text{ mg mL}^{-1}$) were prepared and doped with various amounts of gold NRs ($C_{\text{NR}} = 0.036 \text{ mg mL}^{-1}$ or $C_{\text{NR}} = 0.278 \text{ mg mL}^{-1}$) or with various amounts of CTAB (C_{CTAB} varied from 0.01 mg mL^{-1} to 1 mg mL^{-1}). Finally, the DNA solutions were placed between clean glass slides and coverslips and sealed with DPX mountant for histology (Fluka). The LC samples were stored several weeks at $4 \text{ }^\circ\text{C}$.

Instrumentation

A FEI Tecnai G2 20 X-TWIN transmission electron microscope was used to characterize the size and shape distributions of the gold nanoparticles. The ultraviolet–visible (UV-Vis) absorption spectra were obtained at room temperature using a Thermo Spectronic Unicam UV 300 spectrophotometer. The textures of DNA liquid crystalline phases, as well as the phase transitions as a function of temperature were observed under an Olympus 60BX polarized light microscope equipped with a hot-stage and a camera. The accurate values of the liquid crystalline to isotropic transition temperatures were determined by calorimetry using a Perkin-Elmer DSC-7 differential scanning calorimeter.

Results and discussion

Nanoparticles characterization

Gold NRs synthesized by the wet chemistry method exhibited two different absorption bands arising from a transverse

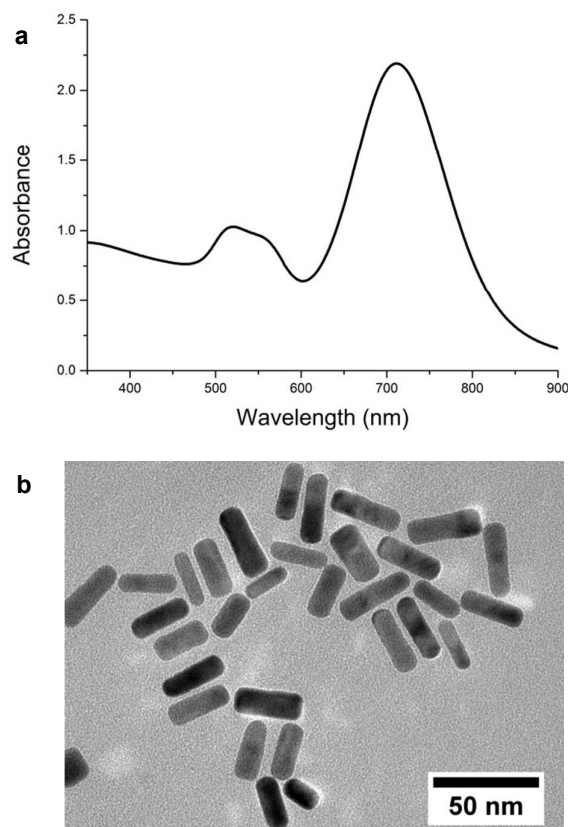


Fig. 1 a) Absorption spectrum of gold NRs. b) TEM image of gold NRs.

surface plasmon resonance observed at 520 nm and a longitudinal surface plasmon resonance observed at 715 nm (Fig. 1a and SI). Transmission electron microscopy (TEM) observations provided useful information about morphology of nanoparticles obtained after the synthesis (Fig. 1b). The average length and width of the NRs were 35 nm and 10 nm, respectively.

DNA liquid crystalline phases

DNA molecules at higher concentrations in aqueous solution tend to self-organize into various liquid crystalline phases.¹⁸⁻²¹ Their formation and properties strongly depend on the properties of DNA solution and the presence of ions or dopants. Within a few days after liquid crystalline cells preparation, the isotropic solution changes itself into a cholesteric phase, which subsequently transforms into a columnar hexagonal phase. The order of phase formation was consistent with previous studies¹⁹ and was preserved in all the prepared LC samples, irrespective of the LCs doping.

Cholesteric phases

Due to their chirality, double helices of DNA may self-assemble into cholesteric phases. This mesophase is also called a chiral nematic phase. The cholesteric LC phase is composed of layers with nematic ordering, which are slightly rotated with respect to each other. The axis of this rotation is normal to the director. An important parameter characterizing the

cholesteric mesophase is the pitch P , which defines the distance of a full turn of the helical superstructure of molecules layers. Typical textures which are observed for DNA cholesterics placed between crossed polarizers under an optical microscope are oily streaks, Grandjean and fingerprint textures.²²

It is very common to observe cholesteric spherulites during the initial phase of cholesteric mesophase formation. Spherical droplets of cholesteric phase nucleated in the isotropic phase in pure and NRs-doped LC cells after a few days of incubation at 4 °C. We noticed that, depending on the concentration of NRs in the LC phase, different sizes and orientation of cholesteric layers of spherulites, with respect to the preparation plane, were obtained (Fig. 2). Figure 2a presents cholesteric droplets formed in the case of pure DNA LC. The size of these spherulites varied from 10 to 100 μm and the cholesteric layers were lying parallel to the interface. Chiral nematic droplets obtained for a LC doped with gold NRs at the concentration of $C_{NR} = 0.036 \text{ mg mL}^{-1}$ were significantly smaller, with the size distribution between 7 and 40 μm . The cholesteric layers of spherulites were aligned either parallel or normal to the interface (Fig. 2b). The smallest cholesteric droplets were observed in a liquid crystalline cell containing the highest amount of NRs. Their size was between 8 and 27 μm and the cholesteric layers were normal with respect to the preparation plate (Fig. 2c).

The size and shape of cholesteric spherulites depends on many parameters, but mainly on equilibrium between bulk free energy and surface free energy.²³ It was found that the presence of nanoparticles in a liquid may lead to an increase of surface tension and surface energy.^{24, 25} This phenomenon is responsible for the growing contribution of surface free energy in the total free energy of a cholesteric droplet, which can

consequently lead to the reduced size of spherulites, as it was observed in DNA – polymer mixtures.^{23, 26} The introduction of gold NRs impacted the cholesteric layers orientation. Vertical disclination lines of spherulites observed in a sample without NRs were not observed in a sample with the highest concentration of NRs. On the contrary, cholesteric layers aligned normal to the interfaces with glass plates. The exact impact of gold NRs addition on the size and shape of spherulites and especially their cholesteric layers orientation is under the detailed study in our laboratory.

Domains of cholesteric phases were observed not only in a control sample (Fig. 3a), but also in both types of doped DNA LCs (Fig. 3b, c, d). The size and shape of liquid crystalline domains were found to be similar between the samples. A variety of defects in the form of singular points, lines and walls are commonly found in LCs. In the case of DNA cholesterics, most common ones are τ and λ disclinations, which are connected with the change of the director orientation, and dislocations, which are associated with the addition or removal of at least one layer in the cholesteric phase.²⁷ Numerous defects, disclinations and dislocations, were present in all observed cholesteric phases regardless of the presence of gold NRs or CTAB in liquid crystalline matrix. We did not notice any significant relationship between the amount of the dopant present in the phase and the number of phase defects.

The helical pitch was measured directly from the photographs of fingerprint textures. We observed the difference between cholesteric pitch values dependent on the presence of dopants in the phase. Addition of gold NRs caused a slight increase of P values in both cases. For pure DNA LCs the average value of P was 5.11 μm , whereas for LCs doped with NRs at the concentration of $C_{NR} = 0.036 \text{ mg mL}^{-1}$ and $C_{NR} = 0.278 \text{ mg mL}^{-1}$ it was 5.30 μm and 5.18 μm ,

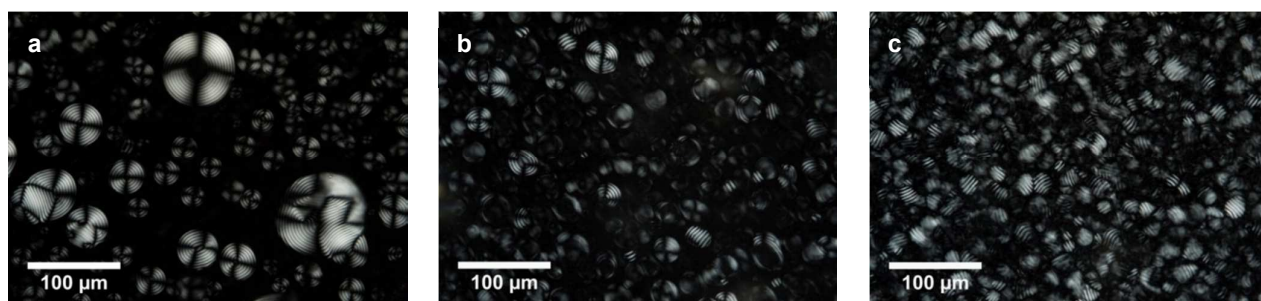


Fig. 2 Cholesteric droplets formed after 4 days of the preparation in the case of a) pure DNA LC; b) NRs-doped DNA LC, $C_{NR} = 0.036 \text{ mg mL}^{-1}$; c) NRs-doped DNA LC, $C_{NR} = 0.278 \text{ mg mL}^{-1}$.

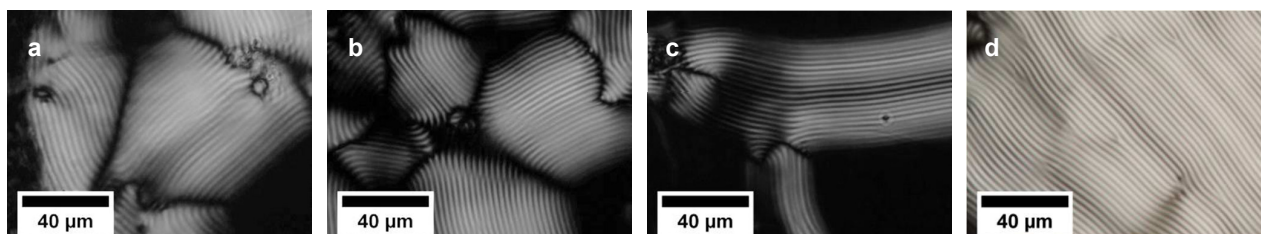


Fig. 3 Fingerprint textures of cholesteric DNA LCs observed 29 days after the preparation: a) pure DNA LC; b) NRs-doped DNA LC, $C_{NR} = 0.036 \text{ mg mL}^{-1}$; c) NRs-doped DNA LC, $C_{NR} = 0.278 \text{ mg mL}^{-1}$; d) CTAB-doped DNA LC, $C_{CTAB} = 1 \text{ mg mL}^{-1}$.

Journal Name

ARTICLE

respectively. Additionally, the more NRs were present in the LCs, the smaller distribution of data around the mean value of P was obtained. Population standard deviation values for the control LC and LCs with regard to the increasing amount of gold NRs were as follows: 1.21, 0.79 and 0.62 μm . In the case of CTAB-doped LCs, a rise of cholesteric P was noticed as well. Comparing these doped LCs with pure DNA LCs, we observed that the helical P values increased by from 0.3 to 1.5 μm . We did not observe any significant relationship between increasing CTAB concentration and the values of P found in corresponding CTAB-doped LCs or distributions of data around the mean value of P . According to the literature, addition of various dopants modifies cholesteric P of LC DNA.²⁸ One of the most crucial parameters influencing the helical P value is charge distribution on DNA chains.²⁹ Thus, the introduction of gold NRs into DNA LCs might have impacted the charge distribution along DNA molecules by electrostatic interaction between CTAB present on the surface of NRs and negatively charged DNA.³⁰ CTAB belongs to the group of cationic surfactants, which may cause DNA condensation.³¹ Consequently, the addition of CTAB or CTAB-stabilized gold NRs to the host LCs induced modifications in intermolecular distances. In this case, the increase of P value can be correlated also with the alteration in the distance between DNA molecules in the adjacent cholesteric layers.

Columnar hexagonal phases

Alignment of mesogenic molecules in columnar hexagonal phases is completely different from molecular organization in cholesteric LCs, which manifests as observations of other types of liquid crystalline textures, such as fan-shaped or undulating textures. In the case of DNA LCs, the change from cholesteric to columnar hexagonal mesophase is a result of slow water evaporation, which causes an increase of DNA concentration.

In this phase, helices align parallel to each other in a two-dimensional hexagonal lattice.¹⁹

Similarly like for the cholesteric phase, a columnar hexagonal phase was found in all prepared samples irrespective of the LCs doping (Fig. 4). The presence of gold NRs in the phase did not influence the columnar phase formation, and the size and textures appearance of LC domains remained similar. NRs or CTAB addition did not impact the mesophase order formation. Typical columnar hexagonal phase defects, such as $+\pi$ and $-\pi$ disclination lines and walls separating domains of different molecular arrangement, were observed in LC cells. The same conclusions concerning the formation and appearance of a columnar hexagonal phase with a periodic zigzag pattern in dried droplets of DNA solution doped with gold NRs were previously drawn by our research group.¹¹

Thermal stability of DNA LCs

Polarized light microscopy (PLM) is one of the most common tools used for the investigation of liquid crystalline phases, which allows to differentiate between various LC textures and also to study and observe phase transitions as a function of temperature. Transformation between different mesophases is the result of the order parameter change. Thus, two types of phase transitions can be distinguished, from an ordered to a less ordered phase and vice versa, depending on an increase or a decrease of the temperature, respectively.³² We observed phase transitions during cholesteric and columnar hexagonal phases heating. To prevent water boiling, the samples heating was carried out up to 93 $^{\circ}\text{C}$.

For cholesteric to isotropic phase transitions, we found that the more NRs were used to dope the phase, the

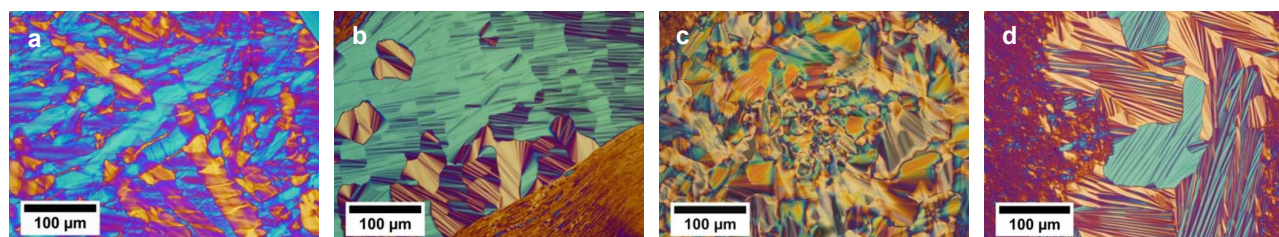


Fig. 4 Columnar hexagonal phase in DNA LCs: a) pure DNA LC; b) NRs-doped DNA LC, $C_{NR} = 0.036 \text{ mg mL}^{-1}$; c) NRs-doped DNA LC, $C_{NR} = 0.278 \text{ mg mL}^{-1}$; d) CTAB-doped DNA LC, $C_{CTAB} = 1 \text{ mg mL}^{-1}$. Photos were taken with a full wave retardation plate.

Journal Name

ARTICLE

higher temperature of the phase transition was obtained. For the control sample the clearing temperature was 57 °C, whereas for the LCs doped with NRs at the concentration of $C_{NR} = 0.036 \text{ mg mL}^{-1}$ it was 62.5 °C and at $C_{NR} = 0.278 \text{ mg mL}^{-1}$ it was 69.5 °C. For CTAB-doped LCs, we observed two opposite trends determined by cationic surfactant concentration. For the growing concentration of CTAB in liquid crystalline cells (up to $C_{CTAB} = 0.036 \text{ mg mL}^{-1}$) maximum 16 °C increase of clearing temperature value was found comparing to pure DNA LCs. After exceeding $C_{CTAB} = 0.036 \text{ mg mL}^{-1}$, clearing temperatures for corresponding CTAB-doped LCs decreased up to 10 °C. Calorimetric study of CTAB-DNA complexes done by Marchetti *et al.* showed that in the presence of different CTAB concentrations, the surfactant-saturated DNA exhibited higher thermal stability over 100 °C.³³ However, the difference between these results and ours might be the consequence of different methods of sample preparation and investigation.

We monitored the changes in a cholesteric P value during liquid crystalline phase heating. The same relationship between P value and increase of temperature was found in all investigated samples. Initially, we noticed a decrease of P , and then, after reaching the minimum P value and before the transformation into the isotropic phase, the P increased again. For many thermotropic cholesterics, the P decreases with increasing temperature, but for lyotropics this dependence is more complex. The initial decrease of P and subsequent increase may be the result of competition between steric and dispersive chiral interactions and stronger thermal fluctuations,³⁴ which lead finally to a rapid pitch growth just before the phase transition.

Observations of columnar to isotropic phase transitions led to similar conclusions about the dependence of the clearing temperature on the gold NRs presence in the phase. For the pure DNA LC and the LC doped with NRs at the concentration of $C_{NR} = 0.036 \text{ mg mL}^{-1}$, the phase transition temperature was 72.5 °C and 79.3 °C, respectively. In the case of CTAB-doped LCs, the clearing temperatures increased by from 5 to 20 °C. The cholesteric-isotropic phase transition temperatures were lower than these of columnar-isotropic phase transitions. This might be explained by the difference in the degree of molecular order and orientation within the phases, where for the columnar hexagonal phase a higher degree of ordering is found. Interestingly, in the case of the LC doped with NRs at the concentration of $C_{NR} = 0.278 \text{ mg mL}^{-1}$, we did not observe any phase transition upon heating up to 93 °C. We conducted the columnar phase heating for the LC cell containing the highest amount of NRs again, and similarly we did not notice a columnar-isotropic phase transition, but at 57 °C a columnar to cholesteric phase transition, which was not observed in other

LC samples, had begun and continued up to 93 °C (Fig. 5). The polarized light microscopic observations of phase transitions are summarized in Table 1.

In order to obtain more precise information about the thermal stability of NRs-doped DNA LCs, we performed differential scanning calorimetry (DSC) measurements. DSC curves (see SI) showed a characteristic broad endothermic peak in the temperature range between 70 and 80 °C. The phase transition temperature was increasing with the increasing amount of NRs in the mesophase. The average clearing temperatures for LCs according to the increasing amount of NRs were 74.9, 76.2 and 78.1 °C, respectively. The difference between phase transition temperatures obtained by means of DSC and PLM was possibly caused by different sample preparation and measurements conditions. However, both methods have confirmed the stabilizing effect of NRs doping on DNA LCs thermal stability.

Table 1 Phase transition temperatures determined from PLM observations

Phase transition	Phase transition temperature (°C)			
	Control sample	$C_{CTAB} = 0.01$ to 1 mg mL^{-1}	$C_{NR} = 0.036$ mg mL^{-1}	$C_{NR} = 0.278$ mg mL^{-1}
Cholesteric to isotropic	57.0	47.0 – 73.0	62.5	69.5
Columnar hexagonal to isotropic	72.5	77.5 – 92.5	79.3	not observed

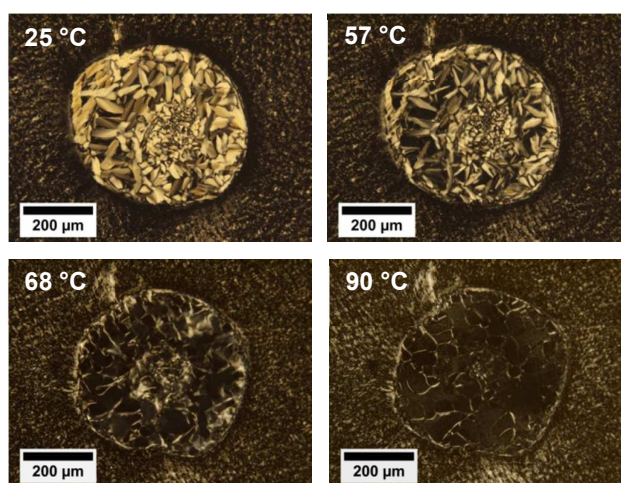


Fig. 5 Columnar hexagonal to cholesteric phase transition in NRs-doped DNA LC cell ($C_{NR} = 0.278 \text{ mg mL}^{-1}$).

We believe that mesophase stabilizing effect caused by the presence of NRs is the result of anisotropic alignment of LC molecules along the gold NRs, as suggested in^{4,11}, or is caused by weak, local interactions between NRs and DNA molecules, which lead to the anchoring of surrounding molecules, as proposed for cholesteric blue phase mixtures consisting of the nematic LC M18 and chiral dopant CB15 and doped with gold nanoparticles.⁶

Conclusions

In summary, we investigated the textures of liquid crystalline phases of DNA and their thermal stability depending on the gold NRs doping. The difference between cholesteric P values was observed depending on the presence of the dopant in a cholesteric mesophase. Addition of NRs caused a slight increase of P , which can be correlated with the change of charge distribution along DNA chains. By means of PLM and DSC, we showed that the introduction of gold NRs improved the thermal stability of the LC. Both CTAB and CTAB-stabilized gold NRs doping have a positive effect on the thermal stability of DNA LCs, but only addition of NRs to LCs may enhance their linear and nonlinear optical properties, which would make these hybrid systems useful for applications in photonics or optoelectronics.

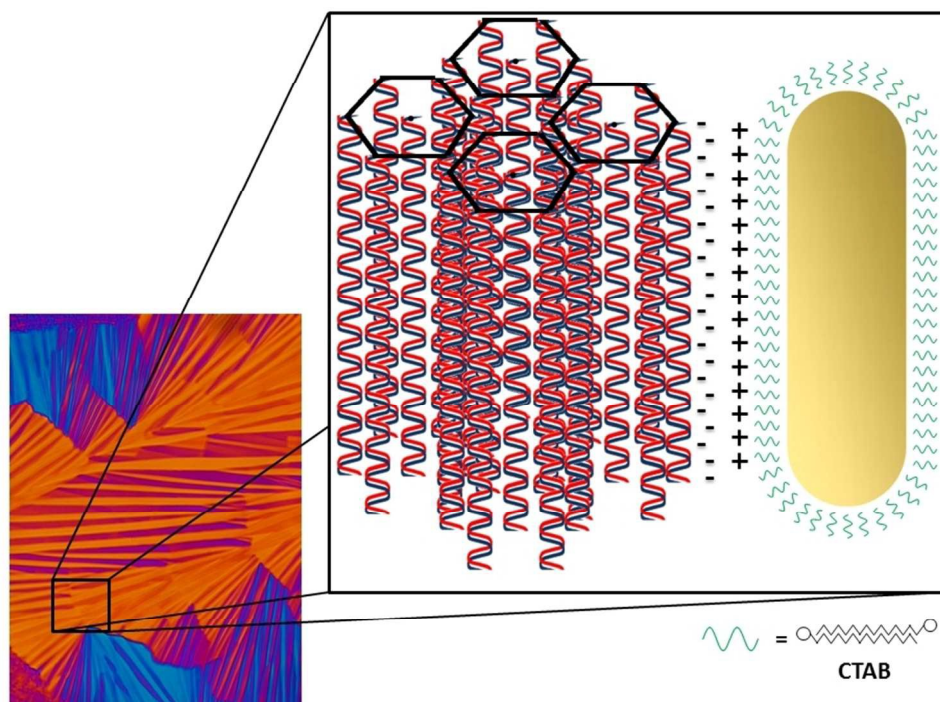
This work demonstrates an effective, easy, inexpensive and efficient method to stabilize cholesteric and columnar liquid crystalline phases using CTAB-protected gold NRs. On the other hand, this research may contribute also to DNA LCs applications as matrices used for nanoparticles ordering, which may result in tuning of optical properties of self-assembled nanoparticles.

Acknowledgements

We gratefully acknowledge funding for this research from NCN OPUS DEC-2013/09/B/ST5/03417 grant. This work was also supported by a statutory activity subsidy from the Polish Ministry of Science and Higher Education for the Faculty of Chemistry of Wrocław University of Technology.

References

- 1 S. Kumar, *NPG Asia Mater.*, 2014, **6**, 1-13.
- 2 R. Basu, *Phys. Rev. E*, 2014, **89**, 022508.
- 3 Y. Zhang, Q. Liu, H. Mundoor, Y. Yuan and I. I. Smalyukh, *ACS Nano*, 2015, **9**, 3097-3108.
- 4 H. Duran, B. Gazdecki, A. Yamashita and T. Kyu, *Liq. Cryst.*, 2005, **32**, 815-821.
- 5 L. Wang, W. L. He, X. Xiao, F. U. Meng, Y. Zhang, P. Y. Yang, L. P. Wang, J. M. Xiao, H. Yang and Y. F. Lu, *Small*, 2012, **8**, 2189-2193.
- 6 A. Sharma, M. Worden and T. Hegmann, *Ferroelectrics*, 2012, **431**, 154-163.
- 7 Z. M. Sui, X. Chen, L. Y. Wang, L. M. Xu and C. J. Yang, *Acta Phys.-Chim. Sin.*, 2006, **22**, 737-743.
- 8 F. Haraguchi, K. I. Inoue, N. Toshima, S. Kobayashi and K. Takatoh, *Jpn. J. Appl. Phys., Part 2*, 2007, **46**, L796-L797.
- 9 J. Mirzaei, M. Urbanski, H. S. Kitzerow and T. Hegmann, *Philos. Trans. R. Soc., A*, 2013, **371**.
- 10 L. De Sio, F. Annesi, T. Placido, R. Comparelli, V. Bruno, A. Pane, G. Palermo, M. L. Curri, C. Umeton and R. Bartolino, *J. Opt.*, 2015, **17**.
- 11 J. Olesiak-Banska, M. Gordel, K. Matczyszyn, V. Shynkar, J. Zyss and M. Samoc, *Nanoscale*, 2013, **5**, 10975-10981.
- 12 Y. M. Yevdokimov and O. N. Kompanets, *Phys. Usp.*, 2014, **57**, 615-621.
- 13 S. G. Skuridin, V. I. Salyanov, V. I. Popenko, E. V. Shtykova, E. S. Lisitsyna, V. A. Dubinskaya, V. A. Bykov and Y. M. Yevdokimov, *Pharm. Chem. J.*, 2013, **47**, 71-79.
- 14 Y. M. Yevdokimov, E. V. Shtykova, V. I. Salyanov and S. G. Skuridin, *Biophysics*, 2013, **52**, 148-156.
- 15 D. Coursault, J. Grand, B. Zappone, H. Ayeb, G. Levi, N. Felidj and E. Lacaze, *Adv. Mater.*, 2012, **24**, 1461-1465.
- 16 K. Matczyszyn and J. Olesiak-Banska, *J. Nanophotonics*, 2012, **6**, 064505.
- 17 T. K. Sau and C. J. Murphy, *Langmuir*, 2004, **20**, 6414-6420.
- 18 J. Olesiak, K. Matczyszyn, H. Mojziso, M. Zielinski, D. Chauvat and J. Zyss, *Mater. Sci.-Pol.*, 2009, **27**, 813-823.
- 19 F. Livolant and A. Leforestier, *Prog. Polym. Sci.*, 1996, **21**, 1115-1164.
- 20 A. Leforestier and F. Livolant, *Liq. Cryst.*, 1994, **17**, 651-658.
- 21 F. Livolant, *J. Phys. (Paris)*, 1987, **48**, 1051-1066.
- 22 T. Bellini, R. Cerbino and G. Zanchetta, in *Liq. Cryst.*, ed. C. Tschierske, Springer Berlin Heidelberg, 2012, vol. 318, ch. 230, pp. 225-279.
- 23 A. Goldar, H. Thomson and J. M. Seddon, *J. Phys.: Condens. Matter*, 2008, **20**, 035102.
- 24 C. T. Campbell, S. C. Parker and D. E. Starr, *Science*, 2002, **298**, 811-814.
- 25 J. Drelich, *Journal of Nanomaterials & Molecular Nanotechnology*, 2013, **2**.
- 26 J. Ubbink and T. Odijk, *Biophys. J.*, 1995, **68**, 54-61.
- 27 A. Leforestier and F. Livolant, *Biophys. J.*, 1993, **65**, 56-72.
- 28 J. Olesiak-Banska, H. Mojziso, D. Chauvat, M. Zielinski, K. Matczyszyn, P. Tauc and J. Zyss, *Biopolymers*, 2011, **95**, 365-375.
- 29 A. A. Kornyshev, S. Leikin and S. V. Malinin, *Eur. Phys. J. E*, 2002, **7**, 83-93.
- 30 S. Husale, W. Grange, M. Karle, S. Burgi and M. Hegner, *Nucleic Acids Res.*, 2008, **36**, 1443-1449.
- 31 R. Dias, S. Mel'nikov, B. Lindman and M. G. Miguel, *Langmuir*, 2000, **16**, 9577-9583.
- 32 S. Singh, *Phys. Rep.*, 2000, **324**, 108-269.
- 33 S. Marchetti, G. Onori and C. Cametti, *J. Phys. Chem. B*, 2006, **110**, 24761-24765.
- 34 M. Pape and K. Hiltrop, *Mol. Cryst. Liq. Cryst. Sci. Technol., Sect. A*, 1997, **307**, 155-173.



254x190mm (96 x 96 DPI)