

**A synthetic gene circuit for measuring autoregulatory feedback control.**

Journal:	<i>Integrative Biology</i>
Manuscript ID	IB-ART-09-2015-000230.R2
Article Type:	Paper
Date Submitted by the Author:	10-Dec-2015
Complete List of Authors:	Schikora-Tamarit, Miquel Àngel; Universitat Pompeu Fabra, Toscano-Ochoa, Carlos; Universitat Pompeu Fabra, Domingo Espinós, Julia; Universitat Pompeu Fabra, Espinar, Lorena; Universitat Pompeu Fabra, Carey, Lucas; Universitat Pompeu Fabra, Experimental and Health Sciences

**INSIGHT STATEMENT**

Auto-regulatory feedback loops are used by cells to maintain homeostasis and to initiate irreversible transitions between cell states. Genome-wide experimental and computational methods predict that many RNA binding proteins participate in auto-regulatory feedback loops. However, experimental verification of these predictions, as well as measurement of the strength of individual feedback loops is lags behind. Here we present a mathematical and experimental framework for quantifying the presence and strength of native feedback loops, and validate the system using synthetic regulatory circuits constructed in yeast using RNA binding proteins. This system allows rapid and high-throughput measurements of the strength of positive and negative feedback loops, and, importantly, can differentiate direct effects from indirect effects.

**A synthetic gene circuit for measuring autoregulatory feedback control.**

Miquel Àngel Schikora-Tamarit\*, Carlos Toscano--Ochoa\*, Júlia Domingo Espinós, Lorena Espinar, Lucas B. Carey.

\*These authors contributed equally to this work.

Auto regulatory feedback loops occur in the regulation of molecules ranging from ATP to MAP kinases to zinc. Negative feedback loops can increase a system's robustness, while positive feedback loops can mediate transitions between cell states. Recent genome-wide experimental and computational studies predict hundreds of novel feedback loops. However, not all physical interactions are regulatory, and many experimental methods cannot detect self-interactions. Our understanding of regulatory feedback loops is therefore hampered by the lack of high-throughput methods to experimentally quantify the presence, strength, and temporal dynamics of auto regulatory feedback loops. Here we present a mathematical and experimental framework for high-throughput quantification of feedback regulation, and apply it to RNA binding proteins (RBPs) in yeast. Our method is able to determine the existence of both direct and indirect positive and negative feedback loops, and to quantify the strength of these loops. We experimentally validate our model using two RBPs which lack native feedback loops, and by the introduction of synthetic feedback loops. We find that the RBP Puf3 does not natively participate in any direct or indirect feedback regulation, but that replacing the native 3'UTR with that of COX17 generates an auto-regulatory negative feedback loop which reduces gene expression noise. Likewise, the RBP Pub1 does not natively participate in any feedback loops, but a synthetic positive feedback loop involving Pub1 results in increased expression noise. Our results demonstrate a synthetic experimental system for quantifying the existence and strength of feedback loops using a combination of high-throughput experiments and mathematical modeling. This system will be of great use in measuring auto-regulatory feedback by RNA binding proteins, a regulatory motif that is difficult to quantify using existing high-throughput methods.

**INTRODUCTION**

Homeostatic maintenance of cell state and transitions between states are often mediated by sets of feedback loops<sup>1</sup>. These loops can be positive or negative, and either directly auto-regulatory or indirect, acting through any number of intermediate genes. Both positive and negative feedback

loops are used by both organisms and synthetic biologists to perform a wide range of tasks, e.g., ATP biosynthesis<sup>2</sup>, MAPK signaling<sup>3</sup> and zinc homeostasis<sup>4</sup>. Genome-wide experimental measurements and computational predictions of protein-protein and protein-RNA interactions suggest the existence of thousands of feedback loops<sup>5-11</sup>. However, not all genes that physically interact with each other regulate each other. Interaction does not necessitate regulation. For example, the mRNAs bound by a given RBP and the RNAs that change expression upon deletion of that RBP show surprisingly little overlap<sup>12</sup>. Therefore, high-throughput experimental and computational methods that are increasingly good at correctly identifying physical interactions must be complemented by high-throughput methods for quantifying the sign and strength of these regulatory interactions.

Feedback loops can be described by two sets of properties: positive or negative and direct or indirect<sup>13,14</sup>. A direct auto-regulatory feedback loop is one in which a protein activates or inhibits itself, while in an indirect loop this feedback occurs through one or more intermediate genes. Furthermore, feedback loops can be positive, in which a gene increases its own expression or activity (eg: via phosphorylation), or negative, in which a gene represses or inactivates itself. Direct auto-regulatory negative feedback loops have an intrinsic ability to reduce sensitivity to intrinsic and extrinsic perturbations<sup>15-17</sup>. In addition, the negative feedback network motif can shorten the response time of a network, as is found in the SOS DNA repair pathway and in ribosome biogenesis in *E coli*<sup>18-20</sup>, and can alter the response curve of a gene to changes in inducer concentration<sup>21,22</sup>. Time-separation in negative feedback loops, often in indirect feedback via intermediate genes, can generate irreversible transitions, as are found in the circadian clock and the cell-cycle<sup>23,24</sup>. Positive feedback loops play an entirely different set of roles<sup>25</sup>, the most common of which is bi-stability, or all-or-none-transitions<sup>26</sup>. These network motifs are common in the cell-cycle and in cell-differentiation, both of which often display a fast positive feedback loop and a delayed negative feedback loop in order to achieve an irreversible transition between two stable states, such as in the cell-cycle or in sex differentiation<sup>24,27</sup>.

Functional genomic and bioinformatic methods predict that many RNA binding proteins (RBPs) participate in feedback loops, in which the RBP regulates the level of its own protein, either directly or indirectly<sup>10</sup>. Direct negative feedback auto-regulation appears to be a common motif for RBPs, and many genes that lack a canonical RNA binding domain may bind to their own mRNA and regulate their own translation<sup>10</sup>. However, very few of these feedback interactions have been

experimentally tested, as no high-throughput methods exist for such validation. The typical high test to measure the regulatory effect of a particular RBP involves deletion of that RBP, and therefore these methods are incapable of determining the existence of feedback loops. In order to determine the complete set of RBPs that control their own expression via direct or indirect feedback regulation, we developed a mathematical model and a high-throughput experimental method that work together to identify the presence of such loops and to measure their relative strength.

## RESULTS

### **A mathematical model for detecting feedback loops using a synthetic inducible promoter.**

In a simple feedback-free model of gene expression (see methods), two proteins under the control of the same inducible promoter will show similar inductions curves (**Figure 1A-D**). Differences in the transcription, translation, and degradation rates of these genes result in offset induction curves (**Figure 1B**). However, the offset between these two curves is constant, and therefore the log-ratio of expression between a protein of interest and a reference protein (eg: GFP) under control of the same promoter will remain constant across induction levels (**Figure 1C**). This effect can also be visualized by plotting expression of the protein of interest against the reference; a change in the transcription rate, translation rate, or degradation rate will result in diagonal lines with the same slope in log-log space (**Figure 1D**). However, if one of the proteins participates in a feedback loop, the shape of the induction curve will change (**Figure 1E,F**). At low levels of induction (low TF concentration, and therefore low protein levels), the feedback loop will be negligible, and expression will be similar between the two proteins. As the induction increases, and therefore the expression of both proteins increases, the effect of the feedback loop on expression will increase, resulting in larger differences in the ratio between the expression of the two proteins (**Figure 1G**). This can also be visualized as a change in the slope when comparing the expression of one protein against the other (**Figure 1H**). Therefore, a relatively simple model of gene expression suggests that it should be possible to detect feedback loops by placing two proteins under the control of the same inducible reporter, and determining how the ratio between the two proteins changes as a function of expression level.

### Design of a feedback-detector master strain.

In order to experimentally test the above predictions, we developed a feedback detector control strain (*bud9::Z<sub>3</sub>EVpr-GFP-GAL80<sub>3</sub>'UTR*, *his3::Z<sub>3</sub>EVpr-mCherry-HIS3<sub>3</sub>'UTR*, hereafter referred to as Y197) in which both GFP and mCherry are driven by the same Z<sub>3</sub>EV promoter under the control of the  $\beta$ -estradiol inducible synthetic zinc-finger transcription factor Z<sub>3</sub>EV (**Figure 2A,B**)<sup>28,29</sup>. Addition of  $\beta$ -estradiol results in increased activity of the Z<sub>3</sub>EV transcription factor and increased expression of both GFP and mCherry (**Figure 2C**). In the absence of feedback, the two proteins show identical induction curves, and the ratio between the two proteins remains constant (**Figure 2C,D**). Our model (see Methods) predicts that if we use the Z<sub>3</sub>EVpr-mCherry construct to N-terminally tag an RNA binding protein that participates in a feedback loop (**Figure 2E,F**), we would alter the induction curve of mCherry but not GFP, and hence the ratio between the two fluorescent proteins would change as a function of TF concentration (**Figure 2G,H**). In order to experimentally test our feedback model, we built synthetic gene circuits with and without feedback regulation.

### A Puf3-COX17 construct participates in an auto-regulatory negative feedback loop.

Puf3 is an RNA binding protein that binds to sequence elements in the COX17 3'UTR, resulting in a destabilized COX17 mRNA<sup>30</sup>. We therefore hypothesized that a *puf3::Z<sub>3</sub>EVpr-mCherry-Puf3-COX17<sub>3</sub>'UTR* strain (LBCY209, hereafter referred to as PUF3<sub>COX17</sub>) should have a negative feedback loop, while a *puf3::Z<sub>3</sub>EVpr-mCherry-Puf3-PUF3<sub>3</sub>'UTR* (LBCY200, PUF3<sub>PUF3</sub>) should lack feedback regulation. We therefore built these two strains, replacing the native promoter with the Z<sub>3</sub>EVpr-mCherry construct, and measured the expression of mCherry-Puf3 as a function of  $\beta$ -estradiol. We find that, as predicted by the model, PUF3<sub>PUF3</sub> shows the same induction curves as Y197, albeit shifted towards lower mCherry expression (**Figure 3B,C**). In contrast, the mCherry signal for the PUF3<sub>COX17</sub> flattens out at high  $\beta$ -estradiol (**Figure 3B,C**). The result is that the the  $\log_2(\text{mCherry}/\text{GFP})$  ratio shows identical behavior between Y197 and PUF3<sub>PUF3</sub> (**Figure 3D**). In contrast, for PUF3<sub>COX17</sub>, the ratio decreases with increasing  $\beta$ -estradiol, consistent with the presence of a negative feedback loop. Further consistent with the presence of a negative feedback loop in PUF3<sub>COX17</sub> but not in PUF3<sub>PUF3</sub>, the slope of GFP vs mCherry for the PUF3<sub>COX17</sub> strain is lower (**Figure 3E**), as predicted by the model for a negative feedback loop.

Gene expression is a stochastic process in which promoters switch on and off, generating bursts of protein production<sup>31</sup>. Therefore gene expression can be decomposed into two parts, burst

frequency (the rate at which a promoter switches on), and burst size (the number of protein molecules made each time a promoter switches on)<sup>32</sup>. We hypothesized that a negative feedback loop that acts at the level of mRNA stability would decrease burst size. Consistent with this hypothesis, the burst frequency for the two strains is identical, while the burst sizes are vastly different (**Figure 4A-D**). Interestingly, we find that, at low induction levels, PUF3<sub>COX17</sub> has a higher burst size than PUF3<sub>PUF3</sub>, though the burst size of PUF3<sub>COX17</sub> increases more slowly than that of PUF3<sub>PUF3</sub> (**Figure 4B**), suggesting that two competing processes control expression of PUF3<sub>COX17</sub>: an increase in expression from increasing  $\beta$ -estradiol, and a decrease in expression from decreasing stability of the mRNA due to negative feedback. The final result of the negative feedback loop is that the same mean expression is reached at different  $\beta$ -estradiol concentrations, though the width of the single-cell expression distribution of mCherry-Puf3 is wider without the negative feedback loop (**Figure 4E**), suggesting that cells may use auto-regulatory negative feedback loops to decrease cell-to-cell variability in RBP expression.

### **Z<sub>3</sub>EVpr-Pub1 participates in an indirect positive feedback loop**

Pub1 is a poly(U) binding protein that binds to and stabilizes up to 10% of yeast mRNAs. We found that a *pub1 $\Delta$*  strain exhibits reduced Z<sub>3</sub>EVpr-GFP expression (**Figure 5A**). However, this reduction is not constant (**Figure 5B**), as would be expected from altered stability of the GFP mRNA. Instead the effect depends on the level of induction, suggesting that Pub1 acts upstream of GFP, *i.e.*, at the level of Z<sub>3</sub>EV activity. This suggests that Pub1 may increase expression all Z<sub>3</sub>EV targets in a dose-dependent manner. In other words, a Z<sub>3</sub>EVpr-Pub1 will generate a positive feedback loop. To test this hypothesis we replaced the native Pub1 promoter with the Z<sub>3</sub>EVpr-mCherry construct, generating a *pub1::Z<sub>3</sub>EVpr-mCherry-Pub1* strain (**Figure 5C**) and measured both GFP and mCherry as a function of  $\beta$ -estradiol concentration. Consistent with our hypothesis, both GFP and mCherry show more steep induction curves in a Z<sub>3</sub>EVpr-mCherry-Pub1 strain than they do in the wild-type control (**Figure 5D,E,F**). In contrast to the negative feedback loop mediated by Puf3, the positive feedback loop mediated by Pub1 results in an increase in the width of the single-cell distribution (**Figure 5G**). Thus, Z<sub>3</sub>EVpr-mCherry-Pub1 drives a positive feedback loop that results in increased expression of both Z<sub>3</sub>EVpr-mCherry and Z<sub>3</sub>EVpr-GFP.

### **A mathematical model in which tagging RBPs with mCherry can explain all of the data.**

In the above experiments we measured expression of four different strains, all of which contain Z<sub>3</sub>EVpr-GFP as an internal control, and each of which contains a unique Z<sub>3</sub>EVpr-mCherry

derived construct. The different C-terminal ends on mCherry (mCherry, mCherry-Puf3 and mCherry-Pub1), and the different 3'UTRs are likely to affect the stability of the mCherry mRNA and protein. These can be modeled as constant, transcription factor independent changes in mCherry expression level. In contrast, feedback loops introduced transcription factor dependent changes in mCherry expression. To determine if all of our data can be explained by this model, we fit a model without feedback to Y197 (mCherry) data, and then used the same parameters, but allowed only  $K'_b$  (TF independent transcription & translation) to vary (see methods). We find that this model can fit Y200 (mCherry-PUF3<sub>PUF3</sub>) but not the other strains, consistent with our above hypothesis that this strain lacks any feedback loops (**Figure 6A,B**). We next fit the same model but allowed both  $K'_b$  and  $F$  to vary. We find that this model can fit all measured strains, and that all good fits to Y209 (mCherry-PUF3<sub>COX17</sub>) have a negative value of  $F$ , and all good fits to (mCherry-PUB1) have a positive value of  $F$ , consistent with our hypothesis that these strains have negative and positive feedback loops, respectively (**Figure 6 C,D**). Thus, our two-color Z<sub>3</sub>EVpr feedback detector system is able to identify the presence of both direct and indirect feedback loops regulated by RNA binding proteins. In addition, by fitting the model to data,  $F$  provides a single value quantification of the strength of the feedback loops, and permits quantitative comparison of positive and negative feedback interactions.

## DISCUSSION

In summary, we have developed an experimental and mathematical framework to measure the strength of native regulatory feedback loops. Through the use of an experimental system in which two fluorescent reporters are driven by the same transcription factor, but one of these is coupled to an RNA binding protein, we can not only detect the presence of both positive and negative feedback loops, but we can quantitatively measure the strength of these loops as well. We applied this system to a synthetic auto-regulatory negative feedback loop with the RBP Puf3, and found that introduction of this loop reduces the noise in Puf3 expression. In addition, we applied this system to the RBP Pub1, and detected a positive feedback loop that increases expression noise. However, this feedback loop is not specific to Pub1, but acts on both Z<sub>3</sub>EVpr-mCherry-Pub1 and Z<sub>3</sub>EVpr-GFP, suggesting that it acts upstream of Pub1, possibly by directly regulating the concentration of the Z<sub>3</sub>EV TF. Pub1 binds the ENO2 3'UTR and the ACT1 5'UTR<sup>12,33</sup>. This observation highlights an important strength of our dual-reporter method, as opposed to more traditional approaches in which the gene of interest is overexpressed or deleted without an internal control in the same cell. Many genetic perturbations result in both direct and indirect effects.



Varying Pub1 changes both mCherry and GFP, showing that the effect is non-specific. The vast majority of changes in mRNA levels observed in deletion and overexpression experiments are indirect<sup>34</sup>. GFP serves as an internal control for the state of the cell and for the state of the synthetic gene circuit. Thus, by combining the dual reporter system with a mathematical model we can accurately differentiate direct and specific effects from indirect pathway-specific or global effects.

The measured change of expression due to the negative feedback loop is a relatively modest 2-fold. The strength of direct auto-regulatory synthetic feedback loops can be tuned from less than 2-fold to greater than 100-fold<sup>35</sup>. Quantitative measurements of the strength of direct auto-regulatory negative feedback loops tend to be on the low end of this range. The Gal4 gene activates its own expression, and is a classic example of feedback regulation in eukaryotes, yet the effect size is only 20-50%<sup>36,37</sup>, far smaller than that measured here. Metabolic feedback in amino acid metabolism is responsible for 2-5 fold changes in expression<sup>38</sup>. The Zap1 transcription factor positively regulates its own expression, driving a 10-fold increase in its own expression<sup>4</sup>. By combining mathematical modeling and a standardized experimental setup, the feedback detector presented here provides quantitative measurements of feedback regulation, and so will enable a more complete understanding of the range of strengths in naturally occurring feedback loops.

Consistent with past theory and experiments<sup>15,17,39-42</sup>, we find that a negative feedback loop decreases noise, while a positive feedback loop increases noise. Interestingly, the increase in noise is far larger than the decrease in noise. However, at this point we cannot say if this difference in the magnitude of the changes is a general property of positive vs negative loops or of direct auto-regulatory loops vs pathway-specific or global feedback loops. It will be interesting to determine if global regulators of expression, such as Pub1, also act as global regulators of expression noise, or if the large increase in noise is due to a pathway-specific positive feedback loop.

Interestingly, we find that the parameter regime that fits Z<sub>3</sub>EVpr-mCherry-Puf3 is exactly continuous with the regime that fits Z<sub>3</sub>EVpr-mCherry-Puf3-COX17 (**Figure 6D**). In addition, the induction curves intersect at around the position of half-maximal expression (**Figure 4, Figure 6C**). This suggests that, at half-maximal induction, the two constructs have identical transcription and translation rates, but that at low induction (less Puf3) the COX17<sub>3'UTR</sub> mRNA is more stable than the

PUF3<sub>3'UTR</sub> mRNA, while at high induction the reverse is true. This would explain the result (**Figure 4B**) that the burst size is higher for the COX17<sub>3'UTR</sub> mRNA at low induction.

Finally, this system may serve as a platform for the design and characterization of synthetic RBPs<sup>43,44</sup>. Synthetic regulatory circuits with designed sequence specificities have many advantages over the repurposing of native circuits, such as Gal4-UAS<sup>28</sup>. However, it is difficult to design such circuits so that they do not interfere with the host cell<sup>45</sup>. The dual-reporter aspect of our system ensures that secondary effects of synthetic circuits can easily be detected, and constructs that lack secondary effects chosen.

## MATERIALS AND METHODS

### Yeast strains and media

All yeast strains are listed in **Supplementary Table 1**. As non inducible and autofluorescence control we used FY4, a wild prototrophic yeast strain<sup>46</sup>. The parental strain for all Z<sub>3</sub>EV strains is DBY19054<sup>29</sup>. To generate LBCY197, we generated a PCR amplicon containing KanMX-Z3EVpr-mCherry using primers 196 & 197 and LBCP80, and transformed this amplicon into DBY19054. Activation of the Z3 transcription factor with  $\beta$ -estradiol does not affect growth rate or expression of any genes in the genome<sup>28,29</sup>. To generate yeast strains LBCY200 and LBCY201 we first generated plasmids LBCP94 and LBCP95, and amplified these plasmids using primer pairs 325,326 and 365,366 respectively, and transformed these PCR amplicons into DBY19054. In order to generate LBCY209 we first generated a puf3::HYG<sup>R</sup> strain (LBCY203), and then generated LBCY209 using primers 325& 327 and plasmid LBCP96. Colony PCR was used to confirm correct integrations of all strains, and to verify that the Z<sub>3</sub>EV promoter has the the correct number of Z<sub>3</sub>EV binding sites. All transformations were performed using the standard lithium acetate method<sup>47</sup>. PCR for transformation was performed with Phusion DNA Polymerase (*Sigma Aldrich*). Colony PCR was performed using Taq Polymerase 2x Master Mix (*Sigma Aldrich*). Selection for drug resistant transformants was done on YPD plates with Hygromycin B(IBIAN), CloNAT(Werner bioreagents), or G418(VWR).

### Plasmid construction

In order to create plasmid LBCP80, a 1.5kb PCR amplicon containing the  $Z_3EVpr$  from gDNA of DBY19054 was amplified using two rounds of PCR, first with primers 316 & 317, then with primers 308 & 309. This PCR product, along with mCherry, was cloned by Gibson assembly into plasmid PYM-N14<sup>48</sup> which had cut with *SacI* and *EcoRI* to remove the GPD promoter. To create plasmids LBCP94 & LBCP95 the PUF3 and PUB1 ORFs were PCR amplified using primer pairs 318, 319 and 329, 330 and Gibson cloned into *EcoRI* linearized LBCP80. Plasmid LBCP96 was created using Gibson assembly with *EcoRI* linearized LBCP80, the PUF3 ORF, and a 200 bp 3'UTR region of COX17 PCR amplified from the genome using primers 321 & 322. After Gibson assembly, each plasmid was transformed to *E. coli* by electroporation and transformants confirmed by colony PCR, miniprep and checked by Sanger-sequencing and multi-site restriction digest.

### Flow Cytometry

Single colonies were picked from YPD plates and cultured overnight in SCD media, inoculated at  $OD_{600} = 0.02$  into different concentrations of SCD +  $\beta$ -estradiol (Sigma E8875) and measured after 7.5 h of growth at 30°C (in which  $OD_{600}$  was between 0.25 and 0.5) (**Figure S1**). The flow cytometry machine used was BD LSRFortessa (BD Biosciences) and with 488nm and 561nm lasers with 530/28 or 610/20 filters for GFP and mCherry. All data analysis was performed using MATLAB as previously described<sup>4</sup>. To estimate burst size and burst frequency we fit a gamma distribution to the measured mCherry expression distribution using maximum likelihood estimation. The same results are obtained using noise and noise squared as estimates of burst frequency and size (**Figure S2**).

### Mathematical modeling and fitting to data

To construct a mathematical model that could explain the fluorescence values over the range of inducer concentrations, it was assumed a constant rate of mRNA synthesis and a mRNA degradation rate proportional to the actual mRNA concentration, and a protein synthesis rate proportional to the mRNA concentration and a degradation rate proportional to the actual protein concentration. Thus, it was defined the following ODE system, which defines the background model

$$\frac{d[mRNA]}{dt} = k_b \alpha - k_d [mRNA] \quad (1)$$

$$\frac{d[Prot]}{dt} = k'_b [mRNA] [Prot]^F - k'_d [Prot] \quad (2)$$

$$\alpha = \frac{(1-BE)[\beta est]^n}{K_{50} + [\beta est]^n} + BE \quad (3)$$

$$BE = \frac{Min\ Fluorescence}{Max\ Fluorescence} \quad (4)$$

in which  $k_b$  and  $k'_b$  are rates of transcription and translation, respectively, and  $k_d$  and  $k'_d$  rates of mRNA degradation and protein degradation, respectively. The factor  $\alpha$  is the transfer function that establishes the relation between inducer concentration and promoter activation, which has been supposed to follow a Hill equation.  $K_{50}$  is the concentration of  $\beta$ -estradiol at which expression reaches its half-maximal value.  $F$  is a feedback constant, with negative values for negative feedback interactions and positive values for positive feedback. Considering (1) and (2) at equilibrium, we can write

$$[Prot]_{eq} = \sqrt[F-1]{\frac{k_d k'_d}{k_b k'_b \alpha}} \quad (5)$$

We note that this feedback model is invalid with regards to the rate of protein production when  $[Prot]$  approaches 0, which is not what we would expect for such a biological system. We therefore used fluorescence data, which always has values greater than zero, as a proxy for  $[Prot]$ . We note that all tested strains show GFP and mCherry signals significantly above background in the absence of  $\beta$ -estradiol, suggesting that, averaged across the population,  $[Prot]$  is always greater than zero. Furthermore, we note that each of the variables within  $(k_d * k'_d) / (k_b * k'_b)$ , cannot be measured individually using our system. We therefore vary a single of these parameters and keep the other three constant.

All data were first normalized by subtracting either autofluorescence, as measured from a strain lacking GFP and mCherry, or basal expression, as measured at 0nM  $\beta$ -estradiol. All analysis, figures, and model fitting was performed using both normalization methods; the results are

qualitatively identical. The latter corrects for differences in the basal expression level between strains, and is used when plotting GFP vs mCherry. The former explicitly shows differences in basal expression level and is used for fitting the model to data. Prior to fitting, normalized fluorescence measurements were log<sub>10</sub> transformed to prevent the high expression values from dominating the fit. The model was first fit to data from Y197. Then, either F, k'b, or both F and k'b were varied over two orders of magnitude and the R<sup>2</sup> was calculated between model and data.

In order to quantitatively decide what R<sup>2</sup> constitutes a good fit, for each strain, we fit the model to one biological replicate and then calculated R<sup>2</sup> of that model a different biological replicate of the same strain. The R<sup>2</sup> is always greater than 0.95 for all strains (**Supplementary Table 2**); we therefore chose 0.95 as the threshold.

## ACKNOWLEDGEMENTS

We'd like to thank Gian Tartaglia, Marçal Gabaldá and Elena Abad for useful discussions. This work was supported by startup funds from the department (DCEXS) and grant from the Agència de Gestió d'Ajuts Universitaris i de Recerca (AGAUR) to L.B.C. M.A.S.T was supported by a Evolutionary Biology and Complex Systems (BESC) Program undergraduate fellowship. The funders had no role in study design, data collection and interpretation, or the decision to submit the work for publication.

## AUTHOR CONTRIBUTIONS

The author have made the following declarations about their contributions: Conceived and designed the experiments and wrote the paper: LBC, with help from MAST & JDE. Performed the experiments and analyzed the data: MAST, CTO, LBC. Contributed reagents and materials: MAST, CTO, JDE, LE.

## REFERENCES

- 1 M. Freeman, *Nature*, 2000, **408**, 313–319.
- 2 I. C. Soto, F. Fontanesi, M. Valledor, D. Horn, R. Singh and A. Barrientos, *Biochim. Biophys. Acta*, 2009, **1793**, 1776–1786.
- 3 C. J. Bashor, N. C. Helman, S. Yan and W. A. Lim, *Science*, 2008, **319**, 1539–1543.
- 4 L. B. Carey, D. van Dijk, P. M. A. Sloom, J. A. Kaandorp and E. Segal, *PLoS Biol.*, 2013, **11**, e1001528.
- 5 T. Nawy, *Nat. Methods*, 2014, **11**, 605–605.
- 6 M. Elsner, *Nat. Biotechnol.*, 2012, **30**, 841–841.
- 7 M. Hafner, M. Landthaler, L. Burger, M. Khorshid, J. Hausser, P. Berninger, A. Rothballer, M.

- Ascano Jr, A.-C. Jungkamp, M. Munschauer, A. Ulrich, G. S. Wardle, S. Dewell, M. Zavolan and T. Tuschl, *Cell*, 2010, **141**, 129–141.
- 8 D. Cirillo, D. Marchese, F. Agostini, C. M. Livi, T. Botta-Orfila and G. G. Tartaglia, *Genome Biol.*, 2014, **15**, R13.
  - 9 D. Cirillo, F. Agostini, P. Klus, D. Marchese, S. Rodriguez, B. Bolognesi and G. G. Tartaglia, *RNA*, 2013, **19**, 129–140.
  - 10 A. Zanzoni, D. Marchese, F. Agostini, B. Bolognesi, D. Cirillo, M. Botta-Orfila, C. M. Livi, S. Rodriguez-Mulero and G. G. Tartaglia, *Nucleic Acids Res.*, 2013, **41**, 9987–9998.
  - 11 D. Cirillo, C. M. Livi, F. Agostini and G. G. Tartaglia, *Mol. Biosyst.*, 2014, **10**, 1632–1642.
  - 12 R. Duttagupta, B. Tian, C. J. Wilusz, D. T. Khounh, P. Soteropoulos, M. Ouyang, J. P. Dougherty and S. W. Peltz, *Mol. Cell. Biol.*, 2005, **25**, 5499–5513.
  - 13 R. Thomas and R. d’Ari, *Biological feedback*, CRC press, 1990.
  - 14 U. Alon, *An Introduction to Systems Biology: Design Principles of Biological Circuits*, CRC Press, 2006.
  - 15 A. Becskei and L. Serrano, *Nature*, 2000, **405**, 590–593.
  - 16 I. Lestas, G. Vinnicombe and J. Paulsson, *Nature*, 2010, **467**, 174–178.
  - 17 M. Thattai and A. van Oudenaarden, *Proc. Natl. Acad. Sci. U. S. A.*, 2001, **98**, 8614–8619.
  - 18 F. M. Camas, J. Blázquez and J. F. Poyatos, *Proceedings of the National Academy of Sciences*, 2006, **103**, 12718–12723.
  - 19 N. Rosenfeld, M. B. Elowitz and U. Alon, *J. Mol. Biol.*, 2002, **323**, 785–793.
  - 20 M. Nomura, *J. Bacteriol.*, 1999, **181**, 6857–6864.
  - 21 D. Nevozhay, R. M. Adams, K. F. Murphy, K. Josić and G. Balázs, *Proceedings of the National Academy of Sciences*, 2009.
  - 22 D. Madar, E. Dekel, A. Bren and U. Alon, *BMC Syst. Biol.*, 2011, **5**, 111.
  - 23 H. A. Duong, M. S. Robles, D. Knutti and C. J. Weitz, *Science*, 2011, **332**, 1436–1439.
  - 24 J. M. Skotheim, S. Di Talia, E. D. Siggia and F. R. Cross, *Nature*, 2008, **454**, 291–296.
  - 25 A. Y. Mitrophanov and E. A. Groisman, *Bioessays*, 2008, **30**, 542–555.
  - 26 J. J. Tyson, K. C. Chen and B. Novak, *Curr. Opin. Cell Biol.*, 2003, **15**, 221–231.
  - 27 L. O. F. Penalva and L. Sánchez, *Microbiol. Mol. Biol. Rev.*, 2003, **67**, 343–59, table of contents.
  - 28 R. S. McIsaac, P. A. Gibney, S. S. Chandran, K. R. Benjamin and D. Botstein, *Nucleic Acids Res.*, 2014, **42**, e48–e48.
  - 29 R. S. McIsaac, B. L. Oakes, X. Wang, K. A. Dummit, D. Botstein and M. B. Noyes, *Nucleic Acids Res.*, 2013, **41**, e57–e57.
  - 30 W. Olivás and R. Parker, *EMBO J.*, 2000, **19**, 6602–6611.
  - 31 L. Cai, N. Friedman and X. S. Xie, *Nature*, 2006, **440**, 358–362.
  - 32 N. Friedman, L. Cai and X. S. Xie, *Phys. Rev. Lett.*, 2006, **97**, 168302.
  - 33 C. Baejen, P. Torkler, S. Gressel, K. Essig, J. Söding and P. Cramer, *Mol. Cell*, 2014, **55**, 745–757.
  - 34 L. Tang, X. Liu and N. D. Clarke, *BMC Genomics*, 2006, **7**, 215.
  - 35 T.-L. To and N. Maheshri, *Science*, 2010, **327**, 1142–1145.
  - 36 T. Ideker, V. Thorsson, J. A. Ranish, R. Christmas, J. Buhler, J. K. Eng, R. Bumgarner, D. R. Goodlett, R. Aebersold and L. Hood, *Science*, 2001, **292**, 929–934.
  - 37 J. O. Nehlin, M. Carlberg and H. Ronne, *EMBO J.*, 1991, **10**, 3373–3377.
  - 38 V. Chubukov, I. A. Zuleta and H. Li, *Proc. Natl. Acad. Sci. U. S. A.*, 2012, **109**, 5127–5132.
  - 39 Y. Dublanche, K. Michalodimitrakis, N. Kümmerer, M. Foglierini and L. Serrano, *Mol. Syst. Biol.*, 2006, **2**, 41.
  - 40 A. Becskei, B. Séraphin and L. Serrano, *EMBO J.*, 2001, **20**, 2528–2535.
  - 41 D. W. Austin, M. S. Allen, J. M. McCollum, R. D. Dar, J. R. Wilgus, G. S. Sayler, N. F. Samatova, C. D. Cox and M. L. Simpson, *Nature*, 2006, **439**, 608–611.
  - 42 C. D. Cox, J. M. McCollum, M. S. Allen, R. D. Dar and M. L. Simpson, *Proceedings of the National Academy of Sciences*, 2008, **105**, 10809–10814.

- 43 Z. Abil and H. Zhao, *Mol. Biosyst.*, 2015.
- 44 J. Cao, M. Arha, C. Sudrik, A. Mukherjee, X. Wu and R. S. Kane, *Nucleic Acids Res.*, 2015, **43**, 4353–4362.
- 45 Y. Schaerli, A. Munteanu, M. Gili, J. Cotterell, J. Sharpe and M. Isalan, *Nat. Commun.*, 2014, **5**, 4905.
- 46 C. B. Brachmann, A. Davies, G. J. Cost, E. Caputo, J. Li, P. Hieter and J. D. Boeke, *Yeast*, 1998, **14**, 115–132.
- 47 R. D. Gietz and R. A. Woods, *Methods Mol. Biol.*, 2006, **313**, 107–120.
- 48 C. Janke, M. M. Magiera, N. Rathfelder, C. Taxis, S. Reber, H. Maekawa, A. Moreno-Borchart, G. Doenges, E. Schwob, E. Schiebel and M. Knop, *Yeast*, 2004, **21**, 947–962.

## FIGURES

### Figure 1. A mathematical model for detecting feedback loops using inducible promoters. (A)

In a simple no-feedback model in which expression of three proteins is driven by identical promoters, but these genes differ in other characteristics, such as mRNA or protein stability, (B) all three proteins will be expressed with offset but identically shaped induction curves. (C) Therefore the log<sub>2</sub> ratio of the expression level of a protein of interest and a constant reference protein will remain constant throughout the induction curve. (D) This can also be quantified by graphing the expression of each protein against a common reference; the lines will be offset from the diagonal but have the same slope. (E) In a model in which the expression of the genes of interest differs due to the presence of positive (green) or negative (red) feedback loops, (F) the induction curves will differ but not in a purely offset manner. (G) Instead, the log<sub>2</sub> ratio of expression will change as a function of induction, because the effect of the feedback loop will be greater at greater expression levels. (H) If each protein of interest is graphed against a common reference, the result is that a positive feedback loop will result in a larger slope, while a negative feedback loop will result in a smaller slope.

### Figure 2. An experimental system to implement a feedback detector for RNA binding proteins. (A)

A control strain in which both GFP and mCherry are driven by the same  $\beta$ -estradiol inducible promoter, the Z<sub>3</sub>EVpr, which is a mutated GAL1 promoter that contains six binding sites for the synthetic zinc finger transcription factor Z<sub>3</sub>EV. (B) Both GFP and mCherry show similarly shaped offset induction curves, resulting in a relatively flat log<sub>2</sub> ratio of expression between the two proteins. (C) Expression data from Y197 (panel A) are well fit by a straight line with a slope close to one, suggesting that GFP and mCherry show almost identical changes in expression across a wide range of  $\beta$ -estradiol concentrations. (D) A test strain for determining if an RBP participates in a feedback loop. The native RBP is replaced with an N-terminally tagged version driven by the Z<sub>3</sub>EV inducible promoter, in a strain that already contains Z<sub>3</sub>EVpr-GFP. Thus expression of the RBP can

be monitored over a wide range of induction levels. **(E)** Simulated data using the measured GFP expression from Y197, showing the effect of positive or negative feedback on the induction curves and the log<sub>2</sub> ratio between GFP and mCherry. **(F)** Given the measured GFP expression of Y197, the expected mCherry signal in the presence of positive or negative feedback.

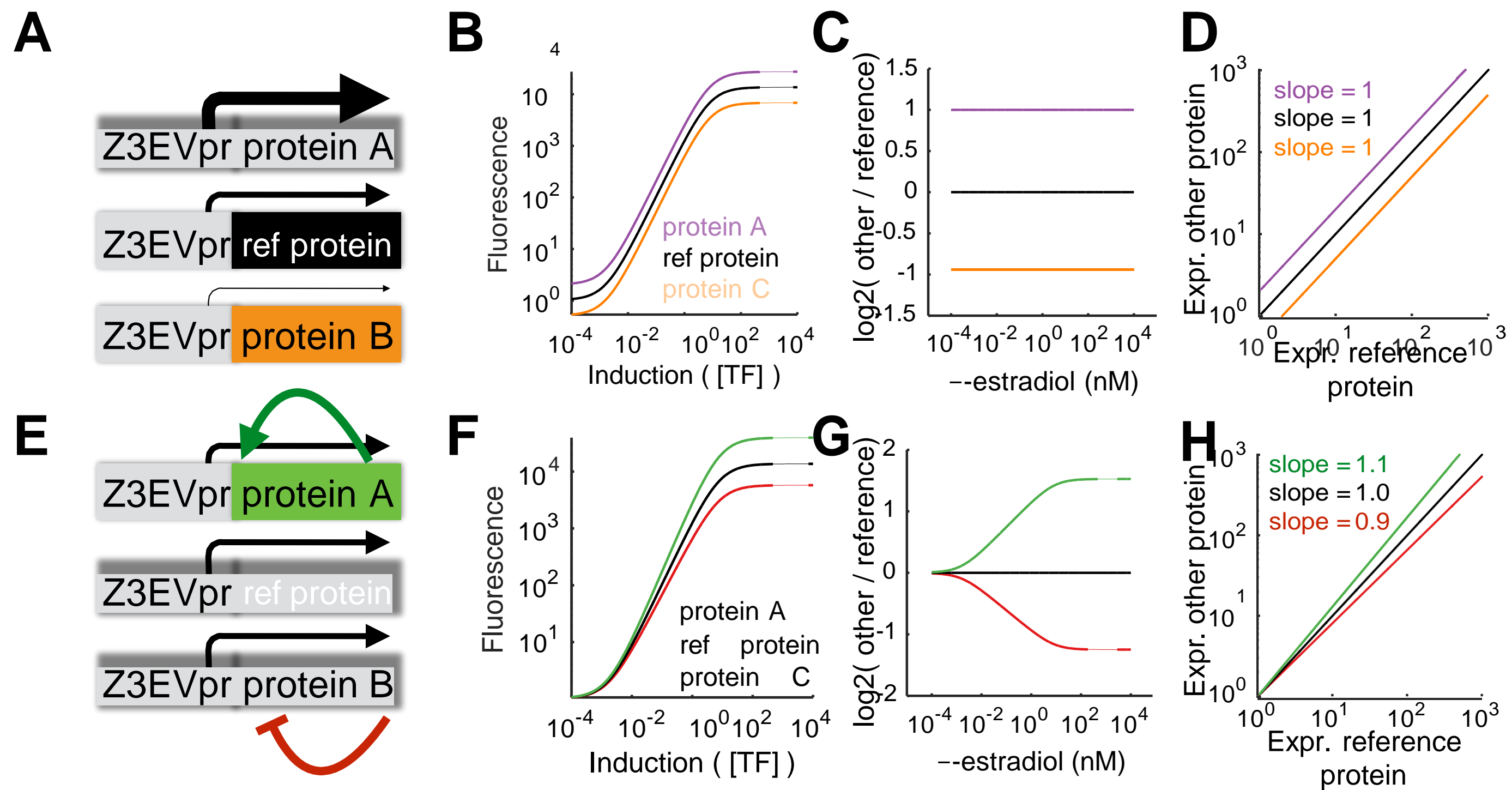


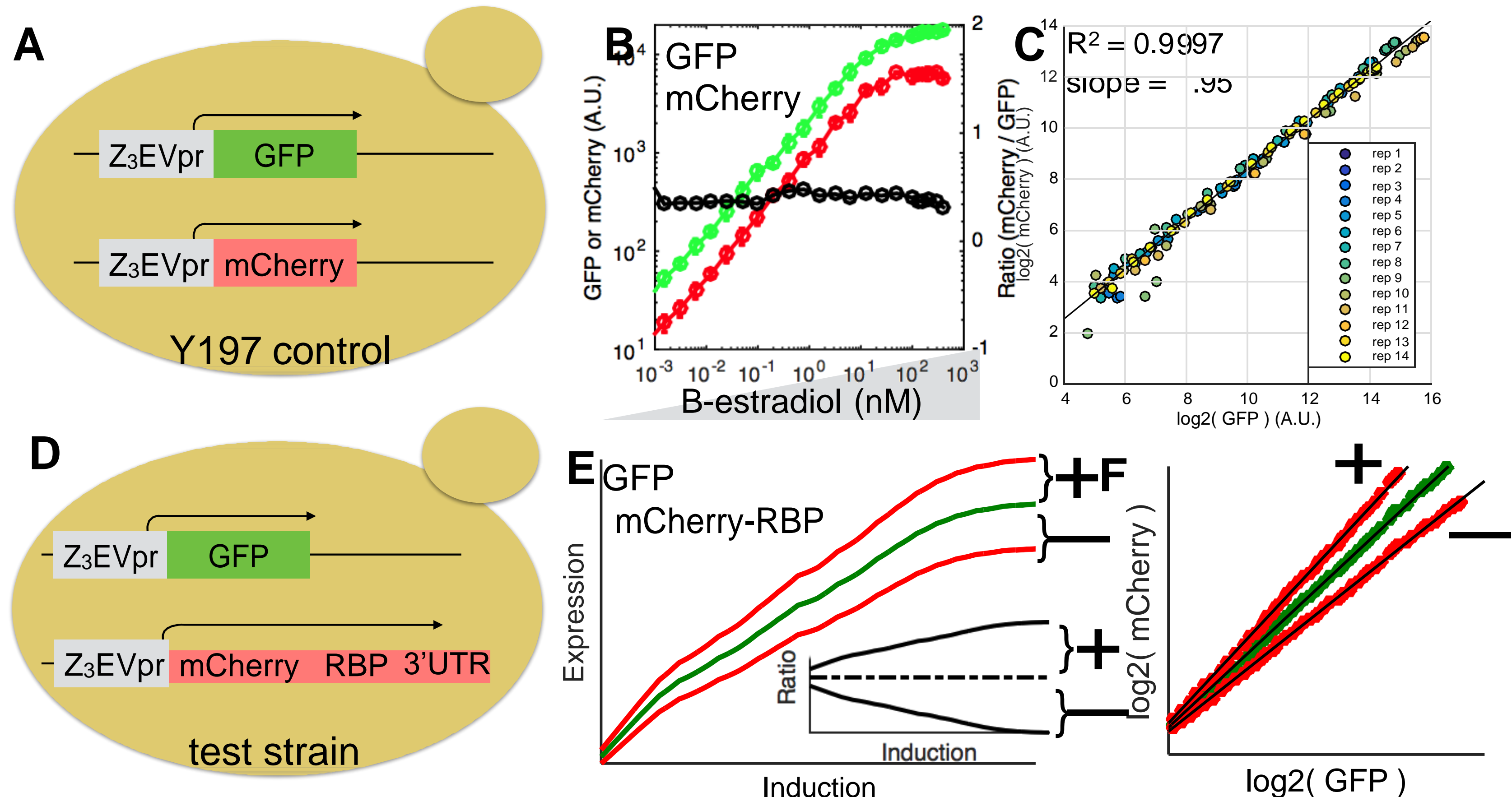
**Figure 3. The RBP Puf3 with a COX17 3'UTR is a direct negative feedback loop. (A)** A yeast strain in which the native Puf3 locus was replaced with either Z<sub>3</sub>EVpr-mCherry-PUF3 or Z3EVpr-mCherry-PUF3-COX17<sub>3'UTR</sub>. The latter strain is expected to generate a direct negative feedback loop, as Puf3 binding destabilizes the COX17 3'UTR. **(B)** GFP induction curves are similar in Y197, mCherry-PUF3 and mCherry-PUF3-COX17 strains. **(C)** The mCherry-Puf3 induction curve is offset from the Y197 mCherry induction curve, yet the two curves are similarly shaped. In contrast, the mCherry-Puf3-COX17 induction curve flattens out at high induction levels. **(D)** The log<sub>2</sub> mCherry/GFP ratio shows a large decrease with increasing induction for PUF3-COX17, consistent with a negative feedback loop. mCherry-Puf3 alone has the same trend in ratio as does mCherry alone, consistent with no feedback loops. **(E)** The GFP vs mCherry slope of mCherry-Puf3 and mCherry are nearly identical. The Puf3-COX17 slope is lower, suggesting the presence of a negative feedback loop.

**Figure 4. The PUF3-COX17 negative feedback loop results in a change in burst size with increasing Puf3-COX17 expression.** Burst frequency (A) and burst size (B) were inferred by fitting a gamma distribution to the fluorescence data (see methods), and are presented in arbitrary units (as are all flow-cytometry data). **(A)** Burst frequency increases similarly with increasing induction for both strains, suggesting that the negative feedback loop does not affect the frequency of transcriptional bursts. **(B)** Increasing  $\beta$ -estradiol results in increased burst size for both strains. Burst size increases more slowly for the PUF3-COX17 strain, suggesting that, as Puf3 expression increases, RNA stability, and therefore burst size, decreases. The difference in burst size is significantly different at both low and high induction levels. **(C)** The same data as in (A) but burst frequency graphed against expression. **(D)** The same data as in (B) but burst size graphed against expression. **(E)** There exist induction levels at which both strains have the same measured mean expression, but PUF3-COX17 shows a decrease in the width of the distribution.

**Figure 5. Z<sub>3</sub>EVpr-Pub1 generates an indirect positive feedback loop that acts on the Z<sub>3</sub>EV transcription factor.** **(A)** A *pub1Δ* strain shows decreased Z<sub>3</sub>EVpr-GFP expression at low  $\beta$ -estradiol concentrations. **(B)** The log<sub>2</sub> ratio of GFP expression in *pub1Δ* vs wild-type cells shows that both strains have the same maximal GFP expression. **(C)** An inducible Pub1 strain for determining if this is due to regulation of the Z<sub>3</sub>EV TF by Pub1. **(D)** Z<sub>3</sub>EVpr-GFP exhibits a steeper induction curve in a Z<sub>3</sub>EVpr-mCherry-Pub1 strain. **(E)** Z<sub>3</sub>EVpr-mCherry-Pub1 exhibits a steeper induction curve than does Z<sub>3</sub>EVpr-mCherry in the Y197 control strain. **(F)** The log<sub>2</sub>(Z<sub>3</sub>EVpr-Pub1/WT) ratios for both GFP and mCherry increase with increasing  $\beta$ -estradiol, consistent with mathematical models of a positive feedback loop. **(G)** A positive feedback loop results in increased width of the single-cell expression distribution in the Z<sub>3</sub>EVpr-Pub1 strain.

**Figure 6. A mathematical model including feedback is required to fit the Z<sub>3</sub>EVpr-Pub1 and Z<sub>3</sub>EVpr-Puf3-COX17 data, but not the Z<sub>3</sub>EVpr-Puf3-PUF3 data.** A model that does not incorporate feedback was fit to mCherry expression data from Y197, and either one or two parameters were allowed to vary to fit data from the other strains. **(A)** A model fit to Y197 in which only the feedback parameter F is allowed to vary can fit all strains with an R<sup>2</sup> greater than 0.95. **(B)** A model in which only k'b is allowed to vary can only fit PUF3 with an R<sup>2</sup> greater than 0.95. **(C)** A model in which both F and k'b are allowed to vary is able to fit all experimental strains. **(D)** The effect of varying both F and k'b on the ability of a model fit on Y197 to fit the other strains is shown. Only R<sup>2</sup> values  $\geq 0.95$  are shown for clarity.





**Figure 2. An experimental system to implement a feedback detector for RNA binding proteins. (A)** A control strain in which both GFP and mCherry are driven by the same B-estradiol inducible promoter, the Z<sub>3</sub>EVpr, which is a mutated GAL1 promoter that contains six binding sites for the synthetic zinc finger transcription factor Z<sub>3</sub>EV. **(B)** Both GFP and mCherry show similarly shaped offset induction curves, resulting in a relatively flat log<sub>2</sub> ratio of expression between the two proteins. **(C)** Expression data from Y197 are well fit by a straight line with a slope close to one, suggesting that GFP and mCherry show almost identical changes in expression across a wide range of B-estradiol concentrations. **(D)** A test strain for determining if an RBP participates in a feedback loop. The native RBP is replaced with an N-terminally tagged version driven by the Z3EV inducible promoter, in a strain that already contains Z3EVpr-GFP. Thus expression of the RBP can be monitored over a wide range of induction levels. **(E)** Simulated data using the measured GFP expression from Y197, showing the effect of positive or negative feedback on the induction curves and the log<sub>2</sub> ratio between GFP and mCherry. **(F)** Given the measured GFP expression of Y197, the expected mCherry signal in the presence of positive or negative

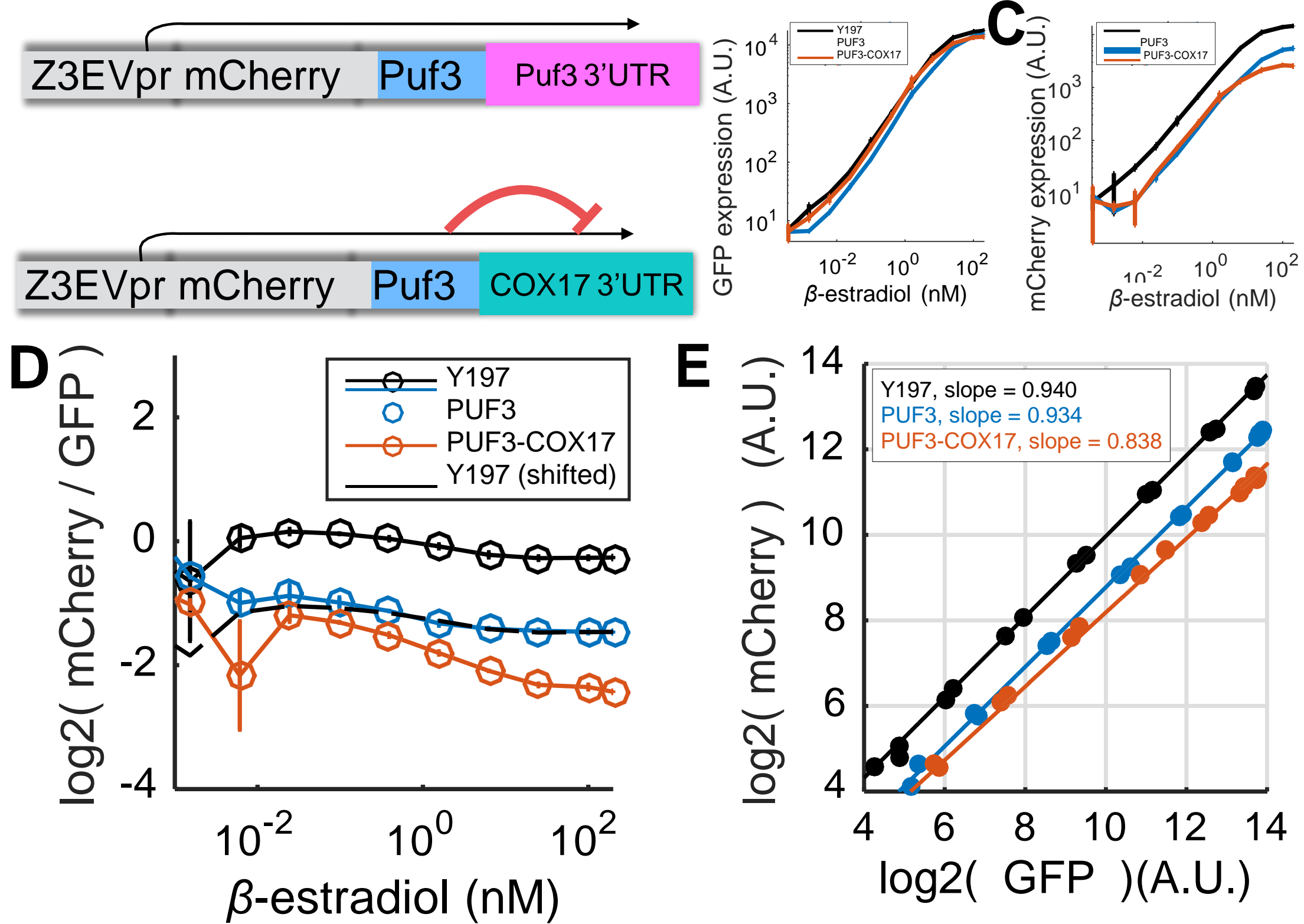
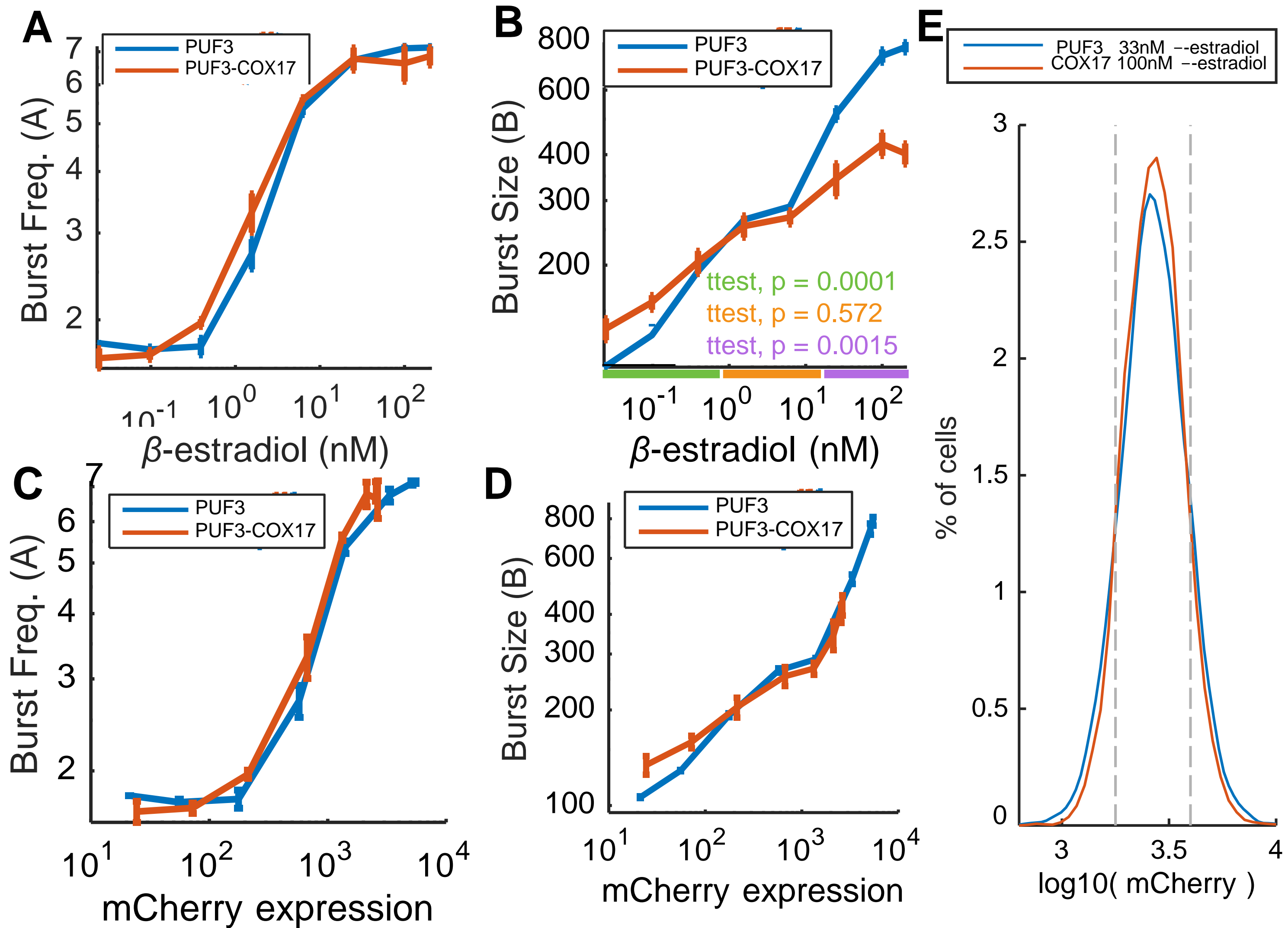


Fig. 4



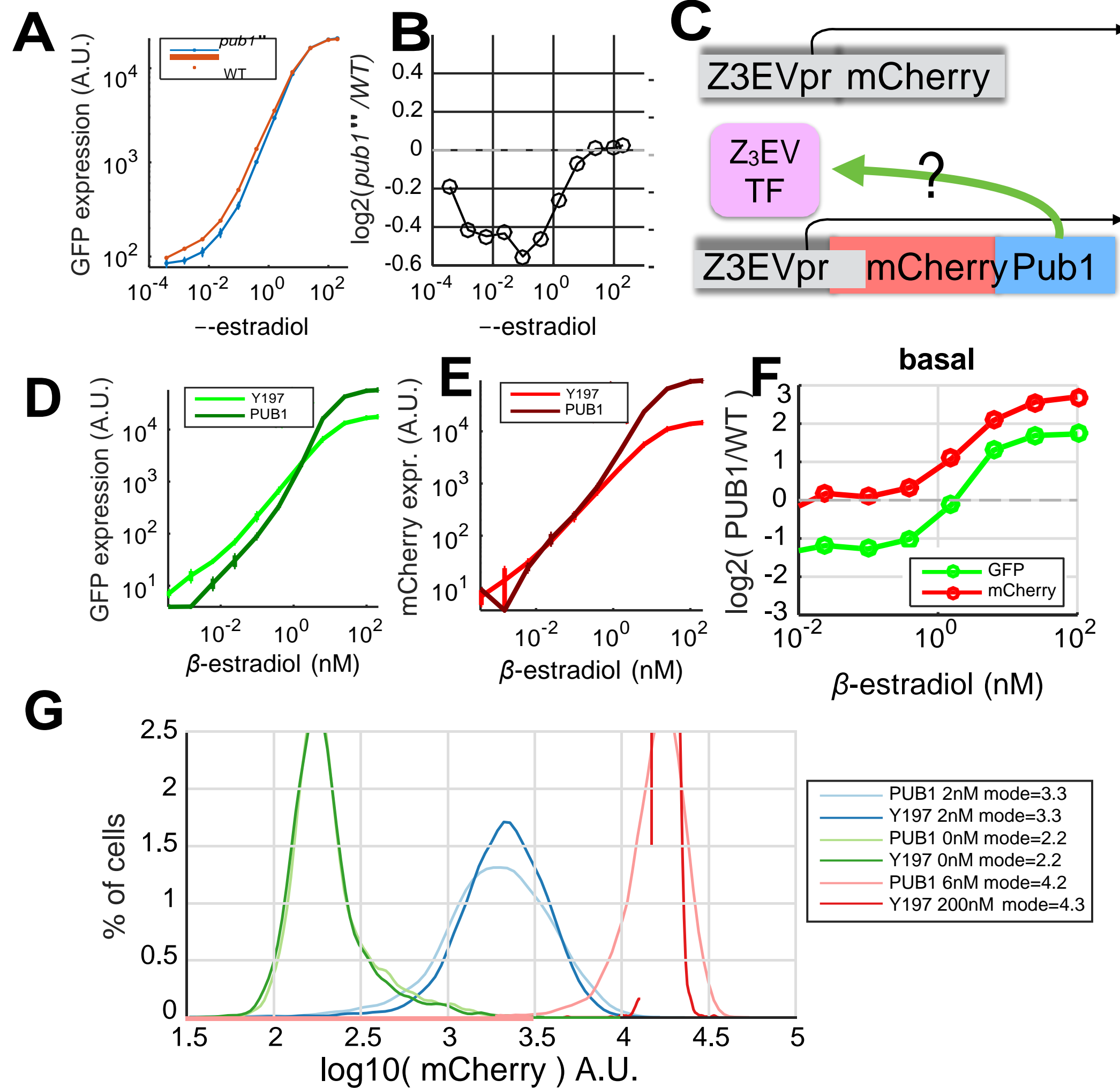
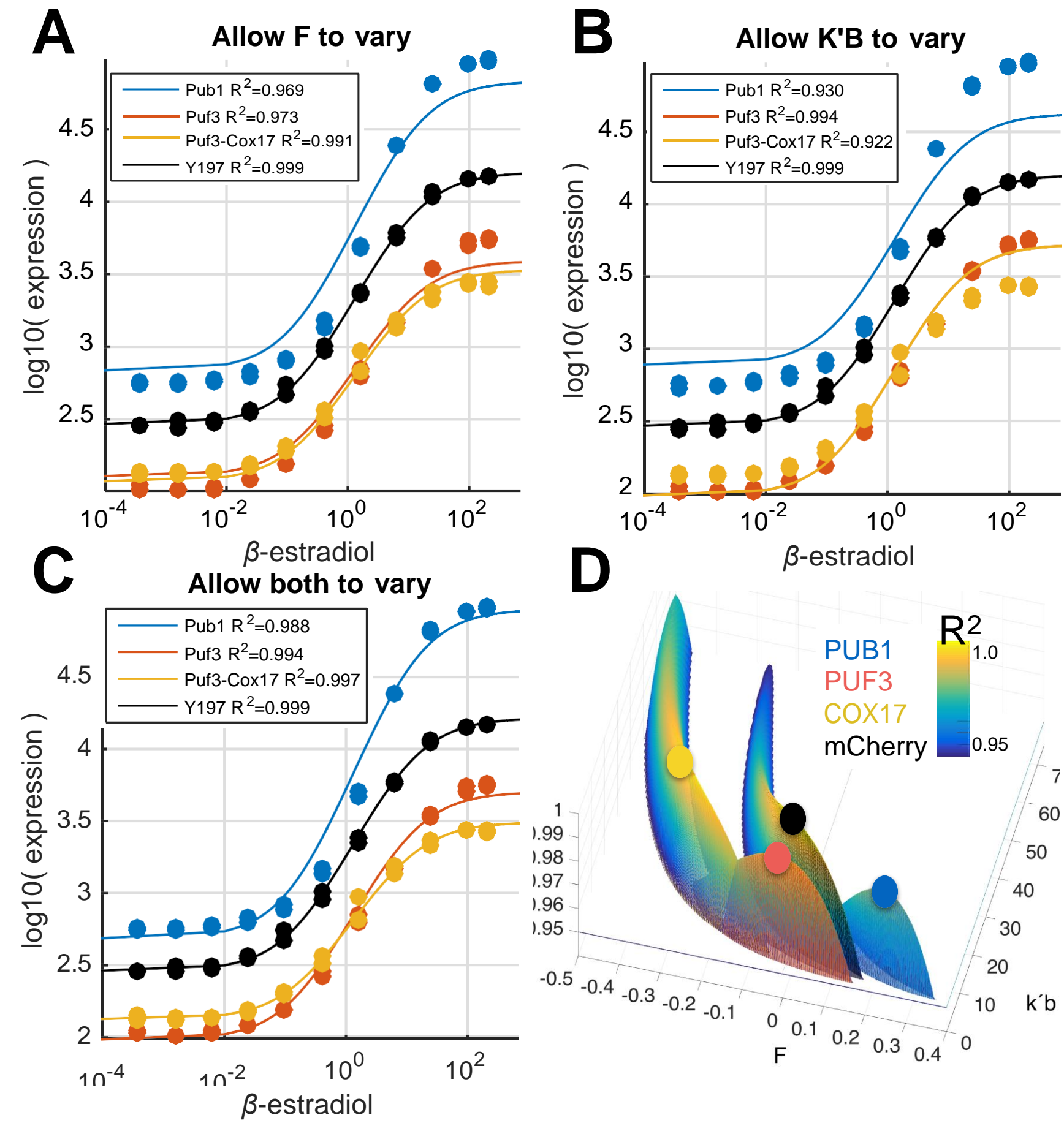
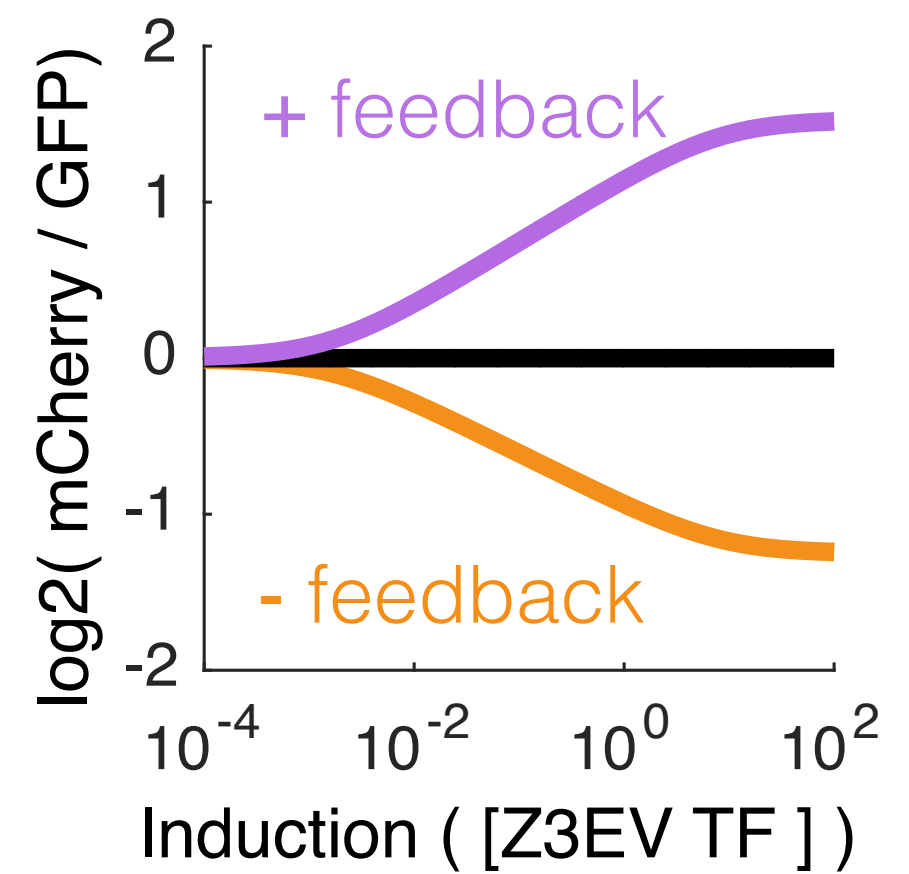
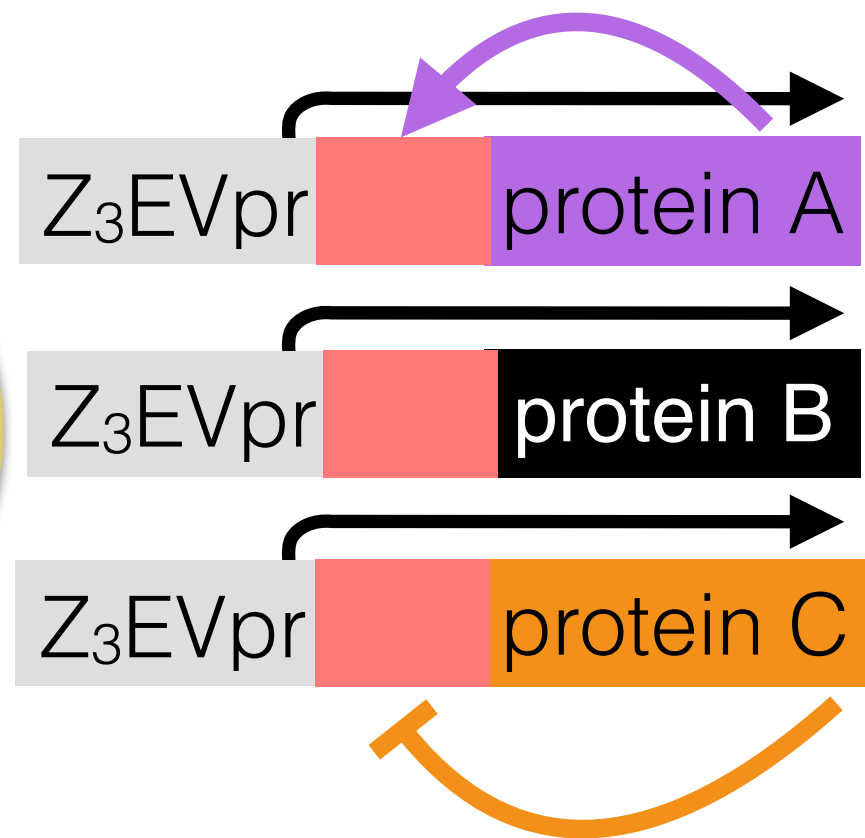
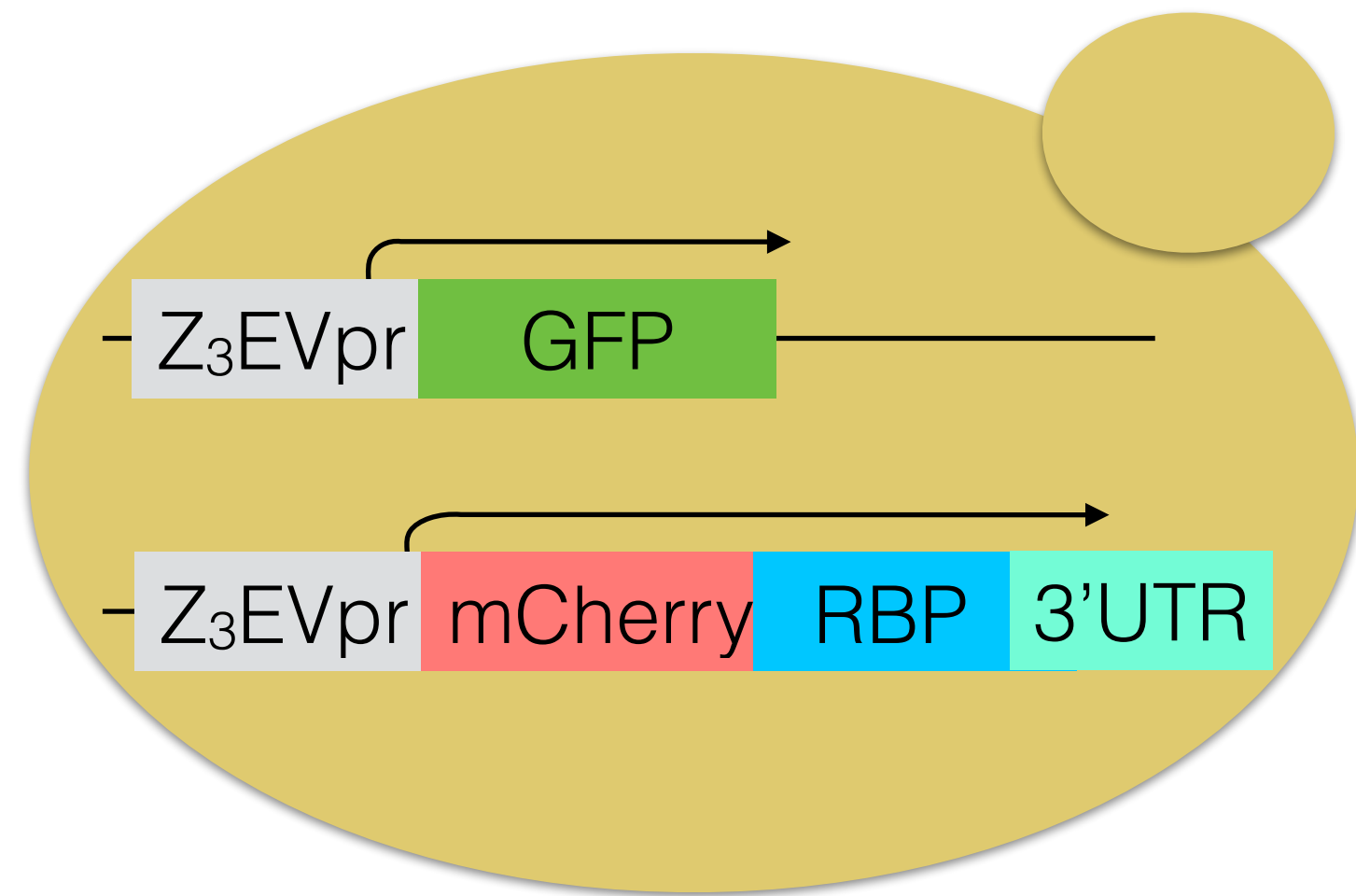


Fig. 6









A sythetic gene circuit for quantifying the strength of native feedback regulation among RNA binding proteins in yeast.