

RSC Advances



This is an *Accepted Manuscript*, which has been through the Royal Society of Chemistry peer review process and has been accepted for publication.

Accepted Manuscripts are published online shortly after acceptance, before technical editing, formatting and proof reading. Using this free service, authors can make their results available to the community, in citable form, before we publish the edited article. This *Accepted Manuscript* will be replaced by the edited, formatted and paginated article as soon as this is available.

You can find more information about *Accepted Manuscripts* in the [Information for Authors](#).

Please note that technical editing may introduce minor changes to the text and/or graphics, which may alter content. The journal's standard [Terms & Conditions](#) and the [Ethical guidelines](#) still apply. In no event shall the Royal Society of Chemistry be held responsible for any errors or omissions in this *Accepted Manuscript* or any consequences arising from the use of any information it contains.

Conditioned bio-interfaces of silicon/porous silicon micro-patterns lead to the chondrogenesis of hMSCs

H. Alarcón^a, M. D. Ynsa^{b,c}, Z. Y. Dang^d, V. Torres-Costa^{b,c}, M. Manso Silván^b, J. F.

Wu^d, M. B. H. Breese^d, J.P. García-Ruiz^a

^a Molecular Biology Department, Universidad Autónoma de Madrid, Campus de Cantoblanco, 28049

Madrid, Spain

^b Department of Applied Physics and Instituto Nicolás Cabrera, Universidad Autónoma de Madrid,

Madrid, Campus de Cantoblanco, 28049 Madrid, Spain

^c Centro de Micro-Análisis de Materiales (CMAM), Universidad Autónoma de Madrid, Campus de

Cantoblanco Edif. 22, Faraday 3, E-28049 Madrid, Spain

^d Centre for Ion Beam Applications (CIBA), Department of Physics, National University of Singapore,

Singapore 117542

Keywords: hMSCs, chondrogenesis, silicon micro-pattern, bio-interfaces, β -catenin, Runx2/VDR.

Abstract

The interaction between cells and materials has scientific and technological interest for the development of new biomaterials with improved functional properties. In this work the chondrogenesis process (CG) of human mesenchymal stem cells (hMSCs) derived from bone marrow of healthy donors has been achieved on Si/PSi surfaces after pre-treatment with a conditioned medium derived from hMSCs (CM). The chondrogenic process was analyzed in fixed-cell preparations by immune fluorescence determining the cellular localization β -Catenin and the transcription factors STAT-5, Runx2 and vitamin D receptor (VDR) complexes. In a week of CG on Si/PSi or CM-Si/PSi, β -Catenin showed cell-cell contacts priming a preferential chondrogenic process on a PSi surface, in contrast with the preferential proliferation and migration processes observed on hexagonal/triangular micro-designed Si areas. Interestingly, the presence of a CM bio-interface improves this differentiation process with respect to a control PSi surface. The chondroinductive effect was also observed in STAT-5 that was highly expressed and it is involved in intracellular signaling of many differentiation receptors involved in development and tissue repair. In good agreement with the above results, the transcription factors Runx2/VDR co-localization at nuclei support active transcription of chondrogenic genes. Considering these observations, we propose that the combination of a rough PSi surface and the components of the CM-hMSCs bio-interface boost the chondrogenesis of hMSCs. These findings suggest that the tailoring of Si/PSi scaffolds with appropriate bio-interface combinations improve their therapeutic potential.

1. Introduction

One of the main goals of tissue engineering is the interaction between cells and tissues with biomaterial surfaces to preserve and control specific biological processes involved in tissue repair and disease reversal. Tissues have a variable capacity to repair/regenerate from liver, blood to a limited extent in bone or cartilage. Although the chondrogenesis process for repairing hyaline cartilage during adulthood is very poor, skeletal tissues derived from endochondral ossification of mesenchymal stem cell (MSC) aggregates maintain this process. Such events can be observed from the skeletal development to the remodeling/repair of the pelvis, in bone extremities and in the vertebral column during the whole life ¹. This complex process requires a different cellular mechanism, which mediates in cell-condensation and differentiation, carried out in a bone-like niche composed of adequate factors, chemical and physical conditions. However, the cellular stages at which MSCs are supposed to mediate from progenitors to differentiated skeletal tissues and the molecular mechanisms involved are not yet well understood.

Chondrogenesis (CG) is initiated when MSCs stop dividing and begin to express the extracellular matrix components (ECM), such as protein factors, proteoglycans and collagens, forming the niche for MSC-derived cells. The bone marrow niche is indispensable also for hematopoietic stem cells that differentiate in progenitor cells of the immune/ hematopoietic system, as well as for endothelial cells to form and maintain vascular health. Cells recognize the ECM geometry in order to regulate intracellular architecture and to provide spatial information of cell polarization, stability of intercellular junction locations and the magnitude of intra and intercellular ^{2, 3}. The heterogeneity of the spatial organization of ECM induces an anisotropic distribution of mechanical constraints in cells at the time they adapt to minimize both intra- and

intercellular forces. The exact contribution of cell-cell and cell-ECM interactions to the specific homeostasis of a niche area is starting to be studied. Increasing amounts of data suggest that MSCs reside in a perivascular niche where they communicate, producing soluble factors and components of ECM⁴. The use of these mixtures of soluble factors, extracellular proteoglycans and collagen produced by hMSCs, known as conditioned medium (CM-hMSCs), has been shown to be effective in forming a bio-interface increasing the adhesion of hMSCs^{5,6,7,8} including sponge structures of PDMS⁹.

The scaffold concept has changed from being considered an inert material to be a proactive cell-instructive material able to control and guide morphogenesis and tissue repair, by displaying the biochemical and biophysical processes needed for tissue formation, maintenance and function. It is known that changes in material properties such as hydrophobicity, surface charge, roughness and stiffness are important for cell-response¹⁰. Of relevance, Si in the form of porous silicon (PSi) is an extremely versatile material and displays a wide range of surface properties depending on processing, aging and functionalization routes^{11, 12}. A way to visualize the contrasting attraction of PSi towards cells consists in the integration of its different forms in micro-patterned surfaces^{13, 14}. In this study, we assessed whether a micro-patterned Si/PSi surface can induce chondrogenesis and whether a pretreatment with CM-hMSCs could generate a bio-interface that improves this process.

2. Material and methods

2.1 Description and preparation of Si/PSi micro-patterns

The micro-patterned Si/PSi surfaces employed in this work are similar to those used in previous studies on hMSC growth and migration¹⁴. As previously described, these surfaces consist of a central Si regular hexagon (length side 5 mm) surrounded by tracks (2 mm length) of Si triangles of different sizes (triangles size of 10 μm , 25 μm or 50 μm) and all Si regions are surrounded by PSi areas with pore diameters of a few tens of nanometers. These micro-patterns were precisely fabricated by a non-conventional lithography method for biological purposes. Bulk p-type Si wafers were selectively irradiated with a high energy ion beam (500 keV H_2^+). The ion-induced defects locally reduce the free carrier density, hence increasing the resistivity of the irradiated silicon regions. Consequently during subsequent electrochemical anodisation, the PSi formation rate is reduced at irradiated areas compared to that at the non-irradiated regions and the surface roughness is also different.

2.3 Cell culture and chondrogenesis

Two to four milliliters of human bone marrow samples from healthy donors were used to isolate hMSC as described¹⁵. hMSCs were provided by Dr. Benjamin Fernández from the Foundation Jiménez-Díaz (Madrid, Spain) and the Cell-bank of Málaga University (Málaga, Spain). The culture expansion of hMSCs was carried out as previously described^{15, 16}. Culture media were prepared by Research Service of Molecular Biology Centre Severo Ochoa (CBM, CSIC-UAM). Cells were plated (Falcon) and incubated with DMEM-LG plus 10% FBS of selected batches to 80% confluence. Cells were collected by treatment with 0.25% Trypsin-EDTA and seeded at 1.5×10^4 on the central Si hexagon of the Si/PSi micro-patterns. Material surfaces were previously washed with Phosphate Buffered Saline (PBS) and sterilized by UV

irradiation, then washed and equilibrated using 2 mL of PBS four to five times. As a control, cells were seeded on cover slips coated with 0.5% gelatin (bovine skin, Sigma). Each experiment was realized in duplicate samples and the experiments were repeated 2–3 times. Osteochondral differentiation of hMSC was undertaken following the methodology used in previous works^{15, 16, 17, 18, 19}. Cells were incubated with 2 mL of DMEM-LG with ITS (6.25 µg/mL insulin; 6.25 µg/mL transferrin; 6.25 µg/mL selenous acid) (Collaborative Research), 400 µM AANE (non-essential amino acids, CBM), 2 mM pyruvate (Gibco), 37.5 µg/mL ascorbate (WAKO); 0.1 mM dexamethasone (Decadran, Merck), 1 mM β-glycerol, and 0.06 ng/mL TGF-β3 (R&D System), for one week. The medium was replaced twice per week.

2.4 hMSCs Conditioned medium

For the preparation of each CM-hMSCs batch, 8-10 p100 culture plates of hMSCs grown at 80% confluence in DMEM-LG and 10% FBS were used. Cells were washed thoroughly with PBS and then incubated in DMEM-LG starved of FBS and complemented with 2 mM pyruvate during the following 24 hours. Afterwards the culture medium was collected, cleaned of any floating cells in a bench centrifuge at 1500 rpm for 5 min. The clean supernatant was cooled down on ice for 30 minutes, centrifuged at 9,000 rpm in a Sorvall centrifuge for 30 minutes to remove salt precipitations and the clean supernatant was stored in 2 mL aliquots at –30 °C until use. We avoided repeatedly freeze-thawing the samples. The activity of each batch was measured by wound-healing assay in triplicate using DMEM-LG-Pyr medium and DMEM-LG-10% FBS as controls.

2.5 Immunofluorescence

After cell culture, samples were processed as previously described^{20, 21}. Briefly, culture micro-patterns were rinsed twice with ice-cold PBS and fixed in 3.7% formaldehyde in PBS for 30 min at room temperature (RT), then washed in PBS. Cells were incubated with 0.5% Triton X-100 in CSK (cytoskeleton) buffer containing 10 mM pipes pH 6.8, 3 mM MgCl₂, 100 mM NaCl, 1 mM EGTA, 0.3 M sucrose, and 1 mM PMSF for 30 min on ice to permeate and remove all cell soluble proteins and fixed with 3.7% formaldehyde as above. For immune detection, cell preparations were blocked with 3% BSA-0.1% Triton X-100 in PBS (PBSA) for 2 h at RT and exposed to different antibodies. We used anti-Runx2 (M-70 and C-19); anti-VDR (D-6 and C-20); anti-STAT-5 (G-2) and anti- β -Catenin antibodies (Santa Cruz Biotech Europe), at the concentration indicated by the respective manufacturer. Secondary antibodies were labeled with either Alexa 488 or Alexa 594 (Invitrogen) (Microscopy Service of Molecular Biology Centre, CSIC-UAM, Spain). These antibodies were used at 1:500 dilutions. When required, nuclei were stained with DAPI (CALBIOCHEM) for 5 min. Immune staining were observed with an inverted IX81 Olympus associated with a DP72 digital camera and controlled by cell^P software.

2.6 Analysis of data

To determine the cellular expression of β -Catenin and STAT-5 in the osteochondral differentiation on native Si/PSi and Si/PSi with CM-hMSCs, we took random fields of the immune staining samples at same magnification and exposure time using the cell^P software. Then, images were processed with ImageJ software to measure the amount of fluorescence corresponding to β -catenin and STAT-5. The obtained values were divided by the number of cells in each field to calculate the amount of β -Catenin and STAT-5 per cell (amount of fluorescence per field / No. of cells per field). Due to the limited

number of patterned samples, the number of cell lines used in this study was one, which excludes the application of any statistical test. Thus, we decided to show the replicas of the data in boxplots using the statistical computing R program.

3. Results and Discussion:

3.1 Si/PSi and CM-Si/PSi interfaces increase of β -catenin in cell-cell adhesion

priming CG of hMSCs

It is well demonstrated that CG of hMSCs is induced by incubating micro-masses of cells in chemically defined medium for three weeks^{15, 19}. Under these conditions, chondrocytes obtained showed the expression of genes of skeletal pattern, osteochondral differentiation and some protein from ECM²¹. The hMSCs plasticity and their communication with ECM have been recognized to be dependent on the patterning of accompanying tissue. Thus, we assessed if Si/PSi surfaces could support the CG process of hMSCs, whether there is a preference either for Si or PSi surfaces, and whether there is any alteration of this process by interfacing with CM-Si/PSi. To this end, CG was followed determining β -Catenin complexes as indicative of an integral component of adherent junctions and of the activation of the Wnt pathway as well. Its absence reflects the inactivation of cadherin cell adhesion and allows cellular proliferation and migration processes, which have clinical relevance associated with cancer development and metastasis²². The results obtained were gathered both with exemplifying micrographs in Fig.1 (A-C for the central hexagonal Si area and D-F for the Si/PSi track areas) and the corresponding replicas of data distribution in the boxplot (Fig. 2). It is observed that β -Catenin is highly expressed in hMSCs, and localized in the cytoplasm, at cell-cell adhesion conformations on Si hexagon (A) and cell-PSi adhesions on micro-patterned Si/PSi. Interestingly, when CM-Si/PSi bio-interfaces were

obtained we noted that cell-cell adhesion on Si (B, central and C, border of hexagon) decreased, while it increased on PSi which showed buried micro-patterns (F) and showed the sporadic detachment at the surface border (E). These results indicate that both PSi surfaces and CM-PSi bio-interfaces are cell-instructive surfaces to induce the differentiation of hMSCs chondrogenesis process. The experimental data have scientific and technological interest for modified scaffolds by a bio-interface that directs specific biological processes^{7,8}.

3.2. PSi and CM-PSi regulates STAT-5 and VDR.

Many factors realize their cellular effect by the association to their receptor and activation Jak-STATs cellular signaling pathway. Among them are Prolactin, Growth hormone, Erythropoietin, Leptin or Leukemia Inhibitory Factor, being essential for energy homeostasis. The STAT-5 member of Stat family of transcription factors targets on various tissues, such as liver, and cell types present in different microenvironments, such as the niches of HSCs (Hematopoietic Stem Cells) and HPCs (Hepatic Progenitor Cells)^{23, 24}. We also considered of interest to analyze Vitamin D Receptor (VDR) transcription factor member of the nuclear receptor family widely related with CG process. As show in Fig. 3, both STAT-5 and VDR proteins are expressed in cells showing CG process on a Si/PSi native surface or a CM-Si/PSi bio-interface. In non-pretreated surfaces cells appeared located on Si hexagons with STAT-5 at cytoplasm (A). As could be expected, VDR was located at the cytoplasm and at nuclei (B) however, no co-localization between both transcription factors could be detected (C). Cells on Si/PSi micro-patterns showed no differences with cells at hexagons (G - I). Interestingly, in a CM-Si/PSi bio-surface an increase in STAT-5 was observed on PSi (J), although, as corresponds to a non-activation by their specific ligand-receptor

system, the protein mainly remains at cytoplasm. VDR, as a member of the nuclear factor family, is also highly expressed on CM-Si/PSi (E), with a preference for PSi (K). Intracellular VDR can be observed in both nuclei (yellow) and cytoplasm. Interestingly, CM treatment did not change any co-localization between both transcriptional factors (Fig.3 (L) and Fig.4). These results point to CM causing a niche-like inductive CG. Furthermore, it can be suggested that the CM-interfaces retain an adequate proportion of factors that trigger Jak2-STAT-5 signaling pathway involved in the CG of hMSCs and direct the cells entry into G0²⁵.

3.3 CM-hMSCs increases nuclear Runx2/VDR co-localization on PSi surface.

We also assessed the determination of transcription proteins implicated in bone cell specification. Runx2 and its co-localization with VDR indicate differentiation of hMSCs, since both transcription factors are localized at the gene promoters of cartilage and bone proteins including the osteocalcin gene^{26, 27, 28, 29, 30, 31}. Results are shown in Fig. 5 and in the boxplot of Fig. 6. As expected from Runx2 and VDR determinations, the CM bio-interface increases cell-cell adhesion and their preference for PSi (D, E and J, K) in respect to -CM (A, B, and G, H). Interestingly, the results agree with above results predicted from the catenin and STAT-5 and VDR results. The CM-Si/PSi bio-interface caused a significant increase in the number of cells with nuclear Runx2/VDR co-localization and the improvement on PSi containing track areas. These results fit well with previous works^{4, 32, 33} and add a new example to support the important role of physical properties, such as roughness and stiffness in a biomaterial, being enough for progenitor cells to realize two different processes: proliferation/migration or differentiation. Thus, much work needs to be done to improve scaffolds supporting

specific fluid dynamics, adequate stiffness and roughness to mimic the desired tissue by directing the scaffold function with bio-interfaces as those herein proposed.

4. Discussion

The results of this work provide data showing that micro patterned Si/PSi and treated with CM-hMSCs give place to bio-interfaces that are inductive scaffolds to hMSCs chondral differentiation. Although the exact composition of this interface is unknown, results can be explained by the generation of a niche-like surface for bone marrow-derived hMSC adhesion that accelerates the chondral-derived differentiation process. hMSCs seeded on Si/PSi present an activation by pretreatment with CM-hMSCs. PSi leads to the expression of the main transcriptional factors for endochondral bone formation. Increased chondrogenesis is also supported by the expanded round morphology of cells, and cell-cell adherence junctions. Furthermore, Runx2/VDR supports chondral differentiation that correlates well with both the osteocalcin, by which the skeleton exerts the regulation of whole energetic metabolism of individuals^{29, 31}. Furthermore, STAT-5 increased expression and its localization at the cytoplasm suggests a traffic of signals between nuclei and cytoplasm involved in the transcriptional networks controlling differentiation in HSCs and progenitor cells^{34, 35, 36}. Interestingly, it has been shown that the STAT-5 transcription factor has a metastasis-suppressive role in breast cancer by inhibiting cell cancer migration, inducing entry in G0, invasion, matrix metalloproteinase secretion and up-regulation of surface E-cadherin and β -catenin²⁵.

Data indicate that hMSCs conserve their cellular plasticity on Si, Si/PSi and Si/PSi treated with CM-hMSCs. More precisely, hMSCs grow/migrate on Si and support endochondral bone differentiation on PSi, being both accelerated on Si/PSi

treated with CM-hMSCs. Thus, scaffolds for skeletal-derived tissue should be improved by a pretreatment with an adequately conditioned medium. Such a medium is a safe approach to tissue repair although the precise composition required to induce an extracellular matrix adapted to a particular injured location is not yet known. Many attempts have been made to know the composition of CM-hMSCs for bone regeneration by mass spectrometry and cell expression determination. However, it is a very complex process, starting with the nature of progenitor cells and the jungle of factors that they produce and their relative proportions. No results exist about the specific mixture of ECM components present in CM-hMSCs. There is neither a clue on what component/s is/are retained directly- or indirectly on a particular biomaterial surface.

Being conscious of the complexity of the bone progenitor cell decision, our results support the hypothesis that PSi treated with CM-hMSCs constitutes a bio-active interface directing the cartilage and endochondral bone formation of hMSCs. These results shall be taken into account when considering new possible therapies for osteoporosis, bone distraction and cartilage or tendon-ligament fracture^{4, 33, 37}.

5. Conclusions

The results reveal that hMSCs find attractive both Si and PSi surfaces to develop cell-surface adhesions which are needed in differentiation. The presence of a CM-hMSCs bio-interface improves the differentiation process with respect to a control PSi surface. This was deduced by: i) β -Catenin determination showing that cells had increased the characteristic cell-cell adherence of differentiating cells and the fibroblastic morphology involved in cell migration; ii) The transcription factor STAT-5 was highly expressed and its localization in cytoplasm indicates G0 cellular stage; iii)

Cells showed a significant increase in nuclear co-localizations of the transcription factors Runx2/VDR.

These trials add new evidence of how a CM-hMSCs bio-interface can induce chondrogenesis of bone marrow-derived cells, and its consideration in tissue engineering strategies for development of new scaffolds.

6. Acknowledgements

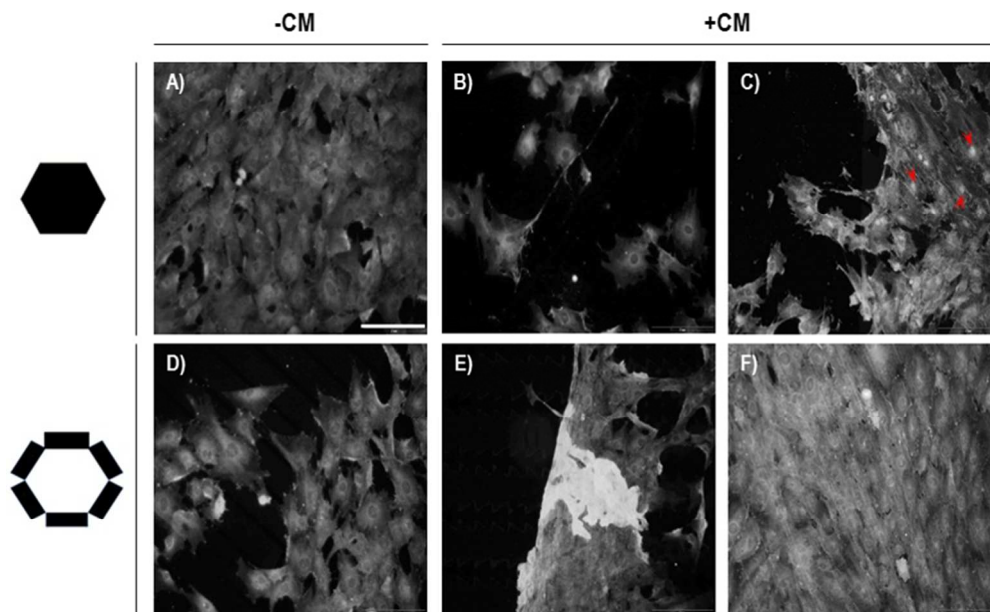
To Juan García for making the culture medium for hMSCs for so many years. Truly thank you so much Juan! Funding through grant MAT2013-46572-C2-1-R from Ministerio de Economía y Competitividad is greatly appreciated. This work has been partially funded by a UAM-Banco de Santander Interuniversity Cooperation with Asia grant. Hernán. Alarcón acknowledges fellowship support from Ministerio de Educación Cultura y Deporte and Fundación Ramón Areces.

References

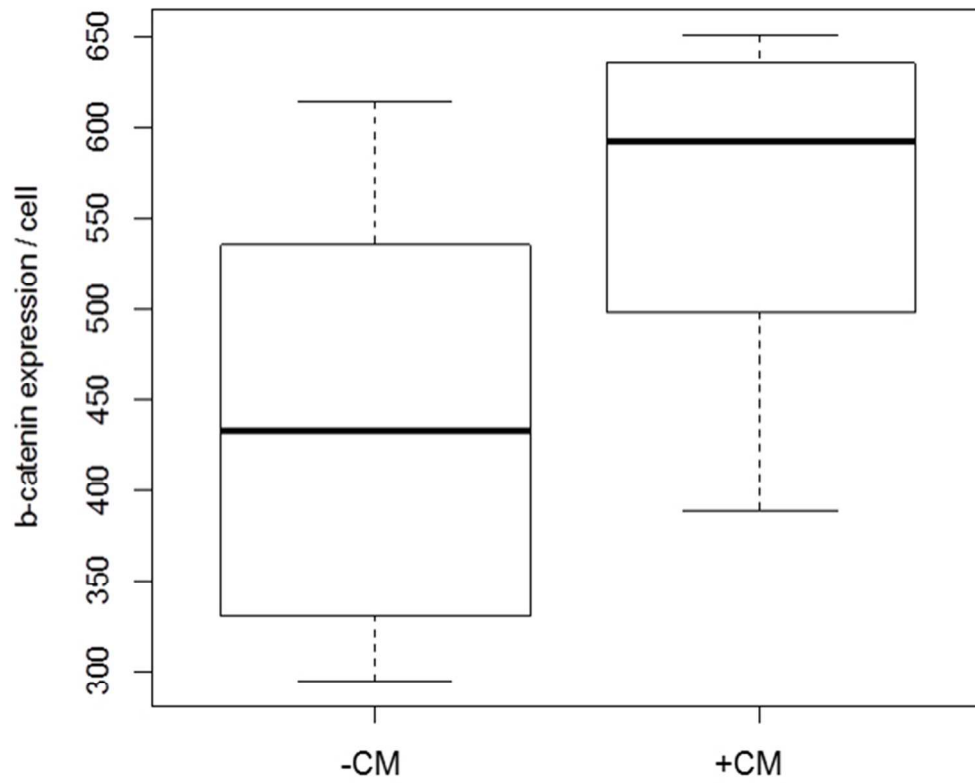
1. Horton, W. A. *Lancet* **2003**, *362*, 560 – 569.
2. Théry, M.; Racine, V.; Piel, M.; Pépin, A.; Dimitrov, A.; Chen, Y.; Sibarita, J. B.; Bornens, M. *Proc. Natl. Acad. Sci. U S A* **2006**, *103*, 19771 – 19776.
3. Tseng, Q.; Duchemin-Pelletier, E.; Deshiere, A.; Balland, M.; Guillou, H.; Filhol, O.; Théry, M. *Proc. Natl. Acad. Sci. U S A* **2012**, *109*, 1506 – 1511.
4. Caplan, A. I. *Natl. Acad. Sci. U S A* **2013**, *110*, 2695 – 2696.
5. Rowland, C. R.; Lennon, D. P.; Caplan, A. I.; Guilak, F. *Biomaterials* **2013**, *34*, 5802 – 5812.
6. Murphy, M. B.; Moncivais, K.; Caplan, A. I. *Exp. Mol. Med.*, **2013**, *45*, e54.
7. Ro, H.; Jung-ha Park, J.; Yang, K.; Kim, J.; Yim, H. G.; Jung, G.; Lee, H.; Cho S. W.; Hwang, N. S. *Cell Tissue Res.*, **2015** doi:10.1007/s00441-015-2195-7
8. de Windt, T. S.; Saris, D. B.; Slaper-Cortenbach, I. C.; van Rijen, M. H.; Gawlitta D.; Creemers, L.; de Weger, R. A.; Dhert, W.; Vonk L. A. *Tissue Eng Part A*, **2015** doi:10.1089/ten.tea.2014.0673.
9. Díaz-Lantada, A.; Alarcón-Iniesta, H.; Pareja-Sánchez, B.; García-Ruiz, J. P. *Advances in Materials Science and Engineering*, **2014**, *2014*, 612976
10. Chelli, B.; Barbalinardo, M.; Valle, F.; Greco, P.; Bystrenova, E.; Bianchi, M.; Biscarini, F. *Interface Focus*, **2014**, *4*, 20130041.
11. Martin-Palma, R. J.; Manso-Silvan, M.; Torres-Costa, V.; *Journal of Nanophotonics*, **2010**, *4*, 042502.
12. Hernández-Montelongo, J.; Muñoz-Noval, A.; García-Ruiz, J. P.; Torres-Costa, V.; Martín-Palma, R. J.; Manso-Silván, M. *Front Bioeng Biotechnol.*, **2015**, *3*:60.
13. Muñoz Noval, A.; Sánchez Vaquero, V.; Punzón Quijorna, E.; Torres Costa, V.; Gallach Pérez, D.; González Méndez, L.; Montero, I.; Martín Palma, R. J.; Climent Font, A.; García Ruiz, J.P.; Manso-Silván, M. *J Biomed Mater Res.*, **2012**, *100A*, 1615 – 1622.
14. Ynsa, M. D.; Dang, Z. Y.; Manso-Silvan, M.; Song, J.; Azimi, S.; Wu, J. F.; Liang, H. D.; Torres-Costa, V.; Punzon-Quijorna, E.; Breese, M. B.; Garcia-Ruiz J. P. *Biomed Microdevices*, **2014**, *16*, 229 – 236.
15. Lennon, D. P.; Haynesworth, S. E.; Young, R. G.; Dennis, J. E.; Caplan, A. I. *Exp Cell Res.*, **1995**, *219*, 211 – 222.
16. Ogueta, S.; Muñoz, J.; Obregon, E.; Delgado-Baeza, E.; García-Ruiz, J. P. *Mol Cell Endocrinol.*, **2002**, *190*, 51 – 63.

17. Yoo, J. U.; Barthel, T. S.; Nishimura, K.; Solchaga, L.; Caplan, A. I.; Goldberg, V. M.; Johnstone, B. *J Bone Joint Surg. Am.*, **1998**, *80*, 1745 – 1757.
18. Johnstone, B.; Hering, T. M.; Caplan, A. I.; Goldberg, V. M.; Yoo, J. U. *Cell Res.* **1998**, *238*, 265 – 272.
19. Pittenger, M. F.; Mackay, A. M.; Beck, S. C.; Jaiswal, R. K.; Douglas, R.; Mosca, J. D.; Moorman, M. A.; Simonetti, D. W.; Craig, S.; Marshak, D. R. *Science*, **1999**, *284*, 143 – 147.
20. Javed, A.; Guo, B.; Hiebert, S.; Choi, J. Y.; Green, J.; Zhao, S. C.; Osborne, M. A.; Stifani, S.; Stein, J. L.; Lian, J. B.; van Wijnen, A. J.; Stein, G. S. *Journal of Cell Science*, **2000**, *113*, 2221 – 2231.
21. Romero-Prado, M.; Blázquez, C.; Rodríguez-Navas, C.; Munoz, J.; Guerrero, I.; Delgado-Baeza, E.; Garcia-Ruiz, J. P. *J Cell. Biochem.*, **2006**, *98*, 1457 – 1470.
22. Hirohashi, S.; Kanai, Y. *Cancer Sci.*, **2003**, *94*, 575 – 581.
23. Belmokhtar, K.; Bourguignon, T.; Worou, M. E.; Khamis, G.; Bonnet, P.; Domenech, J.; Eder, V. *Stem Cell Rev.*, **2011**, *7*, 847 – 759.
24. Staerk, J.; Constantinescu, S. N.; *JAKSTAT*, **2012**, *1*, 184 – 190.
25. Zheng, J.; Fang, F.; Zeng, X.; Medler, T. R.; Fiorillo, A. A.; Clevenger, C. V. *Mol Endocrinol.*, **2011**, *25*, 2054 – 2064.
26. Villagra, A.; Cruzat, F.; Carvallo, L.; Paredes, R.; Olate, J.; van Wijnen, A. J.; Stein, G. S.; Lian, J. B.; Stein, J. L.; Imbalzano, A. N.; Montecino, M. *J Biol. Chem.*, **2006**, *281*, 22695 – 22706.
27. Carvallo, L.; Henríquez, B.; Paredes, R.; Olate, J.; Onate, S.; van Wijnen, A. J.; Lian, J. B.; Stein, G. S.; Stein, J. L.; Montecino, M. *J Cell Physiol.*, **2008**, *214*, 740 – 749.
28. Marcellini, S.; Bruna, C.; Henríquez, J. P.; Albistur, M.; Reyes, A. E.; Barriga, E. H.; Henríquez, B.; Montecino, M. *BMC Evol. Biol.*, **2010**, *10*, 78.
29. Karsenty, G.; Ferron, M. *Nature*, **2012**, *481*, 314 – 320.
30. Wei, J.; Shimazu, J.; Makinistoglu, M. P.; Maurizi, A.; Kajimura, D.; Zong, H.; Takarada, T.; Lezaki, T.; Pessin, J. E.; Hinoi, E.; Karsenty, G. *Cell*, **2015**, *161*, 1576 – 1591.
31. Wei, J.; Karsenty, G. *Curr Osteoporos Rep.*, **2015**, 180 – 185.
32. Yao, X.; Peng, R.; Ding, J. *Adv. Mater.*, **2013**, *25*, 5257 – 5286.
33. Netti, P. A. *Interface Focus*, **2014**, *4*, 20130065.

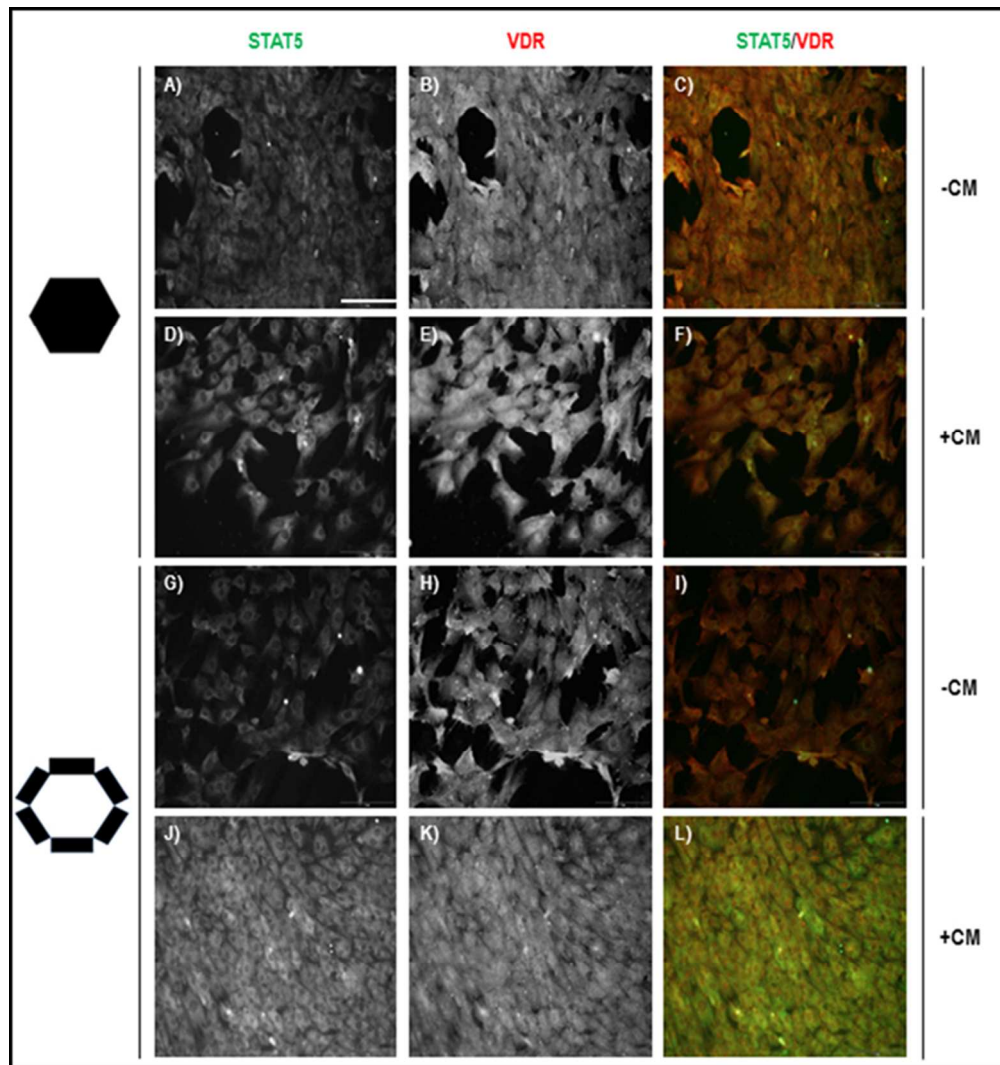
34. Zaidi, S. K.; Young, D. W.; Javed, A.; Pratap, J.; Montecino, M.; van Wijnen, A.; Lian, J. B.; Stein, J. L.; Stein, G. S. *Nat. Rev. Cancer*, **2007**, 7, 454 – 463.
35. Wuelling, M.; Vortkamp, A. *Pediatr Nephrol.*, **2010**, 25, 625 – 631.
36. Laba, J.K.; Steen, A.; Veenhoff, L. M. *Curr. Opin. Cell Biol.*, **2014**, 28, 36 – 45.
37. Caplan, A. I.; Dennis, J. E. *J. Cell Biochem.*, **2006**, 98, 1076 – 1084.



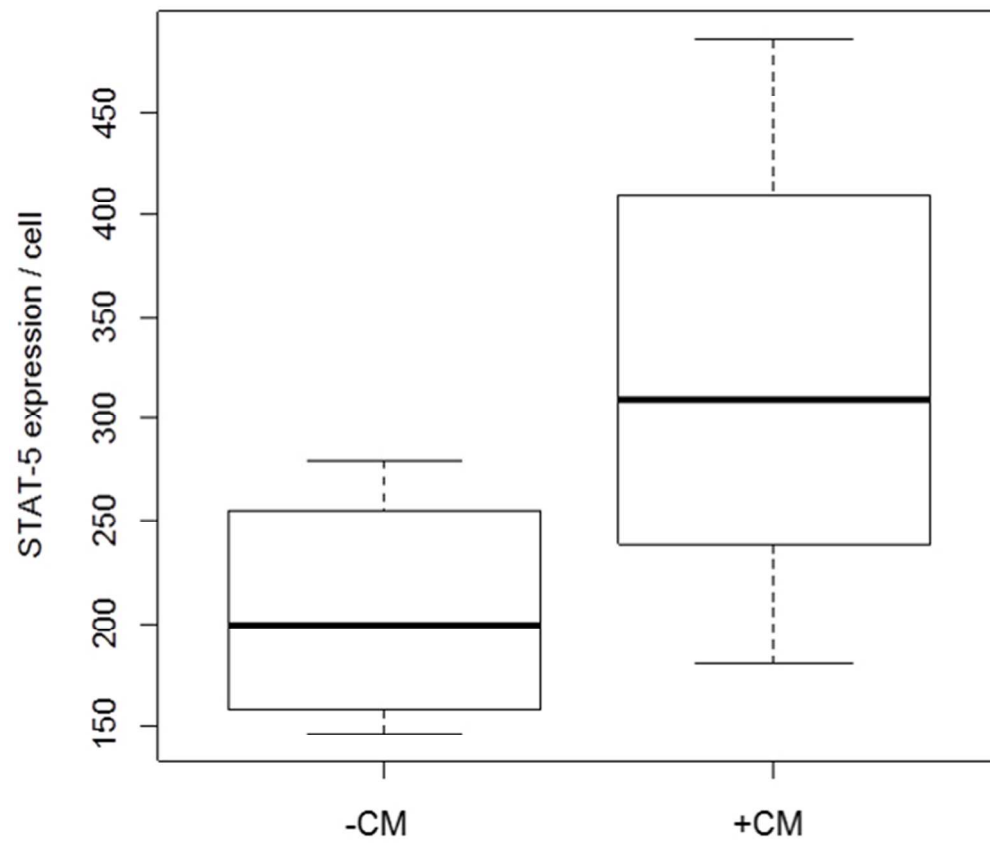
Evaluation of β -catenin on the central Si hexagonal area (A, B, C) and on the Si/PSi tracks (D, E, F) to assess the chondrogenesis process. A pretreatment with CM-hMSCs to generate a bio-interface has been included in (B, C, E and F) examples. The red arrows point the presence of β -catenin into the cell nuclei. The scale bar represents 100 μ m.
149x91mm (150 x 150 DPI)



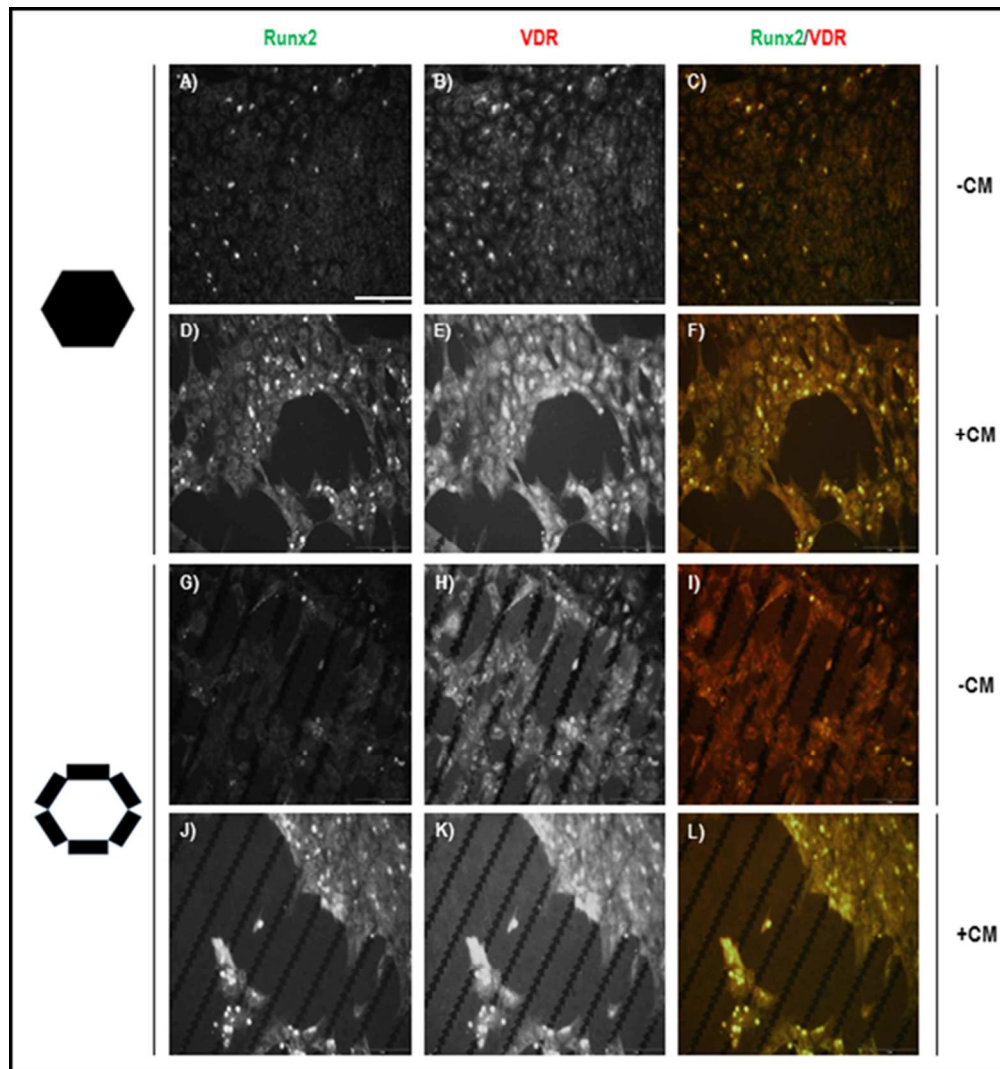
Boxplots showing data distribution of the β -catenin expression per cell during hMSCs osteocondrogenesis on pristine (-CM) and CM-hMSCs treated (+CM) Si/PSi micropatterns.
149x119mm (107 x 107 DPI)



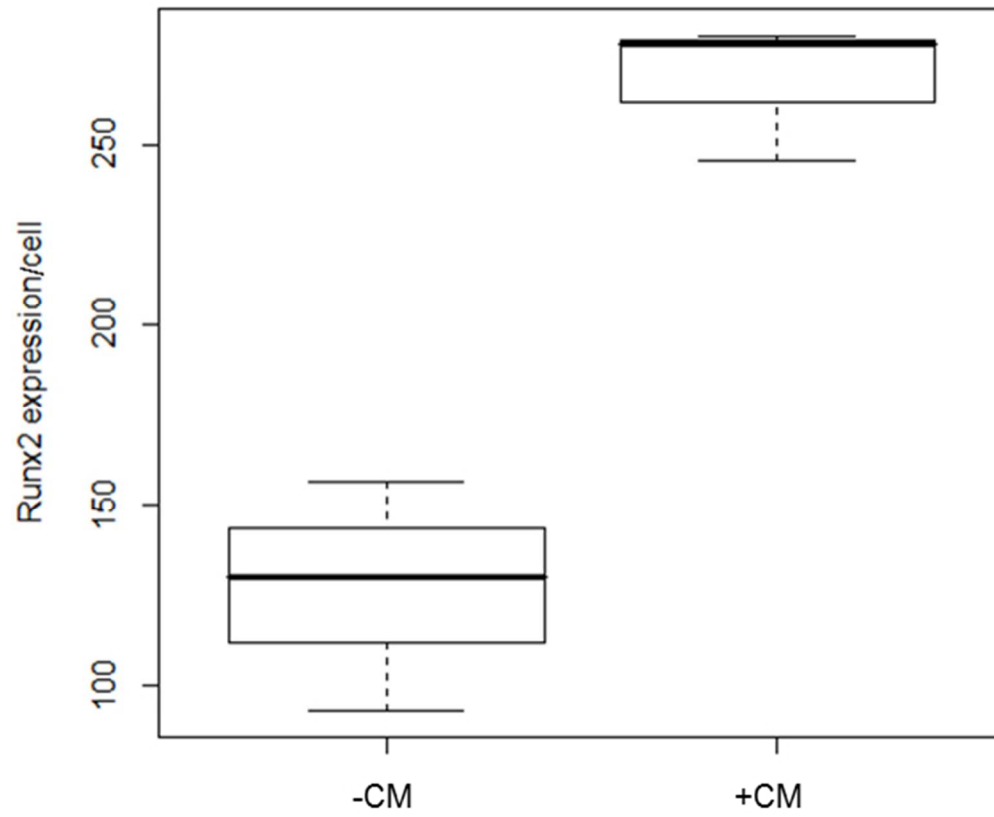
Evaluation of STAT-5 protein (green) and VDR (red), on the central Si hexagonal area (A - F) and on the Si/PSi area (G - L) to assess there are any relationship between both transcription factors during chondrogenic differentiation of hMSCs. A pretreatment with CM-hMSCs to generate a bio-interface has been included in D - F and J - L examples. The scale bar represents 100 μm .
296x315mm (72 x 72 DPI)



Boxplots showing data distribution of the STAT-5 expression per cell during hMSCs osteocondrogenesis on pristine (-CM) and CM-hMSCs treated (+CM) Si/PSi micropatterns.
150x128mm (103 x 103 DPI)



Evaluation of Runx2 (green) and VDR (red), on the central Si hexagonal area (A - F) and on the Si/PSi area (G - L). Both transcriptional factors involved in bone development and cell differentiation. A pretreatment with CM-hMSCs to generate a bio-interface has been included in D - F and J - L examples. The scale bar represents 100 μm .
287x306mm (72 x 72 DPI)



Boxplots showing data distribution of the Runx2 expression per cell during hMSCs osteocondrogenesis on pristine (-CM) and CM-hMSCs treated (+CM) Si/PSi micropatterns.
150x122mm (106 x 106 DPI)