

Journal of Materials Chemistry A

Accepted Manuscript



This is an *Accepted Manuscript*, which has been through the Royal Society of Chemistry peer review process and has been accepted for publication.

Accepted Manuscripts are published online shortly after acceptance, before technical editing, formatting and proof reading. Using this free service, authors can make their results available to the community, in citable form, before we publish the edited article. We will replace this *Accepted Manuscript* with the edited and formatted *Advance Article* as soon as it is available.

You can find more information about *Accepted Manuscripts* in the [Information for Authors](#).

Please note that technical editing may introduce minor changes to the text and/or graphics, which may alter content. The journal's standard [Terms & Conditions](#) and the [Ethical guidelines](#) still apply. In no event shall the Royal Society of Chemistry be held responsible for any errors or omissions in this *Accepted Manuscript* or any consequences arising from the use of any information it contains.



ARTICLE

Efficient ceramic zeolite membranes for CO₂/H₂ separation

D. Korelskiy,* P. Ye, S. Fouladvand, S. Karimi, E. Sjöberg, and J. Hedlund

Received 00th January 20xx,
Accepted 00th January 20xx

DOI: 10.1039/x0xx00000x

www.rsc.org/

Membranes are considered one of the most promising technologies for CO₂ separation from industrially important gas mixtures like synthesis gas or natural gas. In order for the membrane separation process to be efficient, membranes, in addition to being cost-effective, should be durable and possess high flux and sufficient selectivity. Current CO₂-selective membranes are low flux polymeric membranes with limited chemical and thermal stability. In the present work, robust and high flux ceramic MFI zeolite membranes were prepared and evaluated for separation of CO₂ from H₂, a process of great importance to synthesis gas processing, in a broad temperature range of 235–310 K and at an industrially relevant feed pressure of 9 bar. The observed membrane separation performance in terms both selectivity and flux was superior to that previously reported for the state-of-the-art CO₂-selective zeolite and polymeric membranes. Our initial cost estimate of the membrane modules showed that the present membranes were economically viable. We also showed that the ceramic zeolite membrane separation system would be much more compact than a system relying on polymeric membranes. Our findings therefore suggest that the developed high flux ceramic zeolite membranes have great potential for selective, cost-effective and sustainable removal of CO₂ from synthesis gas.

Introduction

Efficient and sustainable CO₂ separation and capture technologies are currently of tremendous interest for several reasons. Firstly, CO₂ is a greenhouse gas, and combustion of fossil fuels is one of the major sources of CO₂ emissions. Secondly, CO₂ is an undesired component in many industrial gas streams, such as natural gas, biogas (methane produced from biomass), and synthesis gas, including bio-syngas produced by biomass gasification¹. Removal of CO₂ from syngas is a requirement for further processing, such as production of liquid fuels, e.g., methanol², and hydrogen at refineries, petrochemical plants, and Integrated Gasification Combined Cycle (IGCC) power plants³. Today, CO₂ is removed primarily by absorption, e.g., amine scrubbing, which is rather an energy-intensive method with high capital costs⁴. In addition, the used absorbents are corrosive and environmentally unfriendly, and the absorption unit is quite large and complex.

Over the past decades, membrane separation technologies have gained an increasing interest for the reasons of high efficiency, sustainability and low energy consumption. Currently, membranes are considered to be one of the most promising CO₂ separation and capture technologies with great market potential^{4, 5}. For instance, the amount of energy required for a 90% recovery of CO₂ using an efficient membrane has been estimated to be ca. 16% of the power produced by the power plant⁶, whereas the energy required by

an amine absorption/desorption process is ca. 50% of the power⁷. From the commercial point of view, polymeric membranes have been the most successful membrane type thus far⁴. For instance, the MTR PolarisTM membranes⁸ have been the first commercial polymeric membranes able to separate CO₂ from synthesis gas. Today's best polymeric membranes can achieve CO₂/H₂ selectivities of 10–12 with a CO₂ permeance of ca. 2×10^{-7} mol s⁻¹ m⁻² Pa⁻¹ at room temperature⁹. Such a low permeance coupled with the fairly poor selectivity necessitates the use of quite large membrane areas for a given separation task. In addition, polymeric membranes suffer from plasticisation induced by CO₂, which significantly reduces the membrane selectivity and stability over time⁴.

Among ceramic membranes, zeolite membranes are especially attractive and promising⁵. These membranes are microporous aluminosilicate membranes with a well-defined pore system¹⁰. Due to the porous structure, zeolite membranes can display much higher fluxes than polymeric membranes¹¹, i.e., a much smaller membrane area would be needed for a given separation task. Additionally, ceramic zeolite membranes offer an advantage over polymeric membranes in terms of high chemical and thermal stability¹².

Despite the great interest in synthesis gas upgrading using membranes, the number of studies devoted to evaluation of zeolite membranes for this application is small⁹. Whereas highly CO₂-selective zeolite membranes have been developed, e.g., SAPO-34 membranes¹³ with a CO₂/H₂ separation factor of 110 at 253 K and a feed pressure of 12 bar, there are only a few reports on high flux zeolite membranes. Our research group has extensive experience in preparing ultra-thin (ca. 0.5–1 μm) high flux MFI zeolite membranes¹⁴, and these

Chemical Technology, Luleå University of Technology, SE-97187 Luleå, Sweden. E-mail: danil.korelskiy@ltu.se

membranes have been evaluated for various gas^{2, 14-19} and liquid²⁰ separations. In the present work, these membranes were evaluated for separation of CO₂ from H₂ (CO₂/H₂ mixtures are typically considered as a model system for synthesis gas²¹) in a wide temperature range of 235–310 K and at a feed pressure of 9 bar.

Experimental

Membrane synthesis

Supported zeolite membranes comprised of an H-ZSM-5 film with a thickness of ca. 0.5 μm and a Si/Al ratio of 139¹⁷ were prepared as described in detail in our earlier work¹⁴. A porous graded α-alumina disc (Fraunhofer IKTS, Germany) was used as the support. Prior to the film synthesis, the supports were masked as described elsewhere²² and then seeded with colloidal MFI crystals of 50 nm in diameter. The film synthesis was carried out for 36 h at 100°C in a solution with a molar composition of 3TPAOH : 25SiO₂ : 1450H₂O : 100C₂H₅OH. After the synthesis, the membranes were rinsed with a 0.1 M Ammonia solution for 24 h and then calcined for 6 h at 500°C at a heating rate of 0.2°C min⁻¹ and a cooling rate of 0.3°C min⁻¹.

Membrane characterisation

Scanning electron microscopy (SEM) characterisation of the membranes was carried out using a Magellan 400 (the FEI Company, Eindhoven, the Netherlands) instrument with no coating. Cross-sections of the membranes were obtained by fracture with a pair of cutting pliers.

X-ray diffraction (XRD) characterisation of the membranes was performed using a PANalytical Empyrean diffractometer equipped with a Cu LFF HR X-ray tube and a PIXcel^{3D} detector. The data evaluation was performed using HighScore Plus 3.0.4.

The prepared membranes were also characterised by *n*-hexane/helium permoporometry¹⁵ as described in detail in our earlier work²³ and in brief below. The membranes were sealed in a stainless steel cell using graphite gaskets (Eriks, the Netherlands). In order to remove any adsorbed compounds, the membranes were heated to 300°C at a heating rate of 1°C min⁻¹ and kept at this temperature for 6 h in a flow of pure helium. Permporometry characterisation was carried out at 50°C and a total pressure difference across the membrane of 1 bar with the permeate stream kept at atmospheric pressure. The relative pressure of *n*-hexane was raised in a step-wise manner from 0 to ca. 0.4. At each relative pressure, the system was allowed to achieve steady-state. For removing *n*-hexane from the permeate stream, a condenser kept at -40°C followed by a column packed with activated carbon was used. The permeate volumetric flow rate was measured with a soap bubble flow meter. A detailed procedure for estimation of the relative areas of defects from permoporometry data is given in our earlier work²³. In brief, the defect width was calculated from *n*-hexane relative pressure using either the Horvath–Kavazoe equation (micropore range defects) or the Kelvin equation (mesopore range defects). For each defect interval,

the average defect width was then calculated. Based on the average defect width, the average helium diffusivity in each defect interval was estimated using the gas-translational model. Knowing the diffusivity, the helium molar flux was further calculated from Fick's law. Finally, the defect area was estimated as the ratio between helium molar flow and flux through the defects in that particular interval.

Separation experiments

Separation experiments were carried out using an equimolar mixture of CO₂ and H₂. The membrane was in the same cell as used for the permoporometry experiment. The total feed pressure was kept at 9 bar, whereas the total permeate pressure was atmospheric. All experiments were performed without sweep gas. Prior to the experiments, the membrane was flushed with pure helium for 6 h at 300°C in order to remove any adsorbed species. The permeate volumetric flow rate was measured with a drum-type gasmeter (TG Series, Ritter Apparatebau GmbH) and the permeate composition was analysed on-line with a mass spectrometer (GAM 400, InProcess Instruments).

The flux of component *i*, J_i (mol s⁻¹ m⁻²), was estimated from the measured molar flow of the corresponding component through the membrane, F_i (mol s⁻¹) as

$$J_i = F_i / A,$$

where A is the membrane area (m²).

The permeance of component *i*, Π_i (mol s⁻¹ m⁻² Pa⁻¹), was calculated from the flux of the corresponding component through the membrane as

$$\Pi_i = J_i / \Delta P_i,$$

where ΔP_i (Pa) is the partial pressure difference of component *i* across the membrane.

The separation factor β_{ij} was estimated as

$$\beta_{ij} = (y_i / y_j) / (x_i / x_j),$$

where x and y are the molar fractions in the feed and permeate, respectively.

The membrane selectivity α_{ij} was estimated as

$$\alpha_{ij} = \Pi_i / \Pi_j.$$

Results and discussion

Membrane characterisation

The fabricated membranes were H-ZSM-5 zeolite films with a Si/Al ratio of about 139¹⁷ supported on commercial α-alumina discs (Fraunhofer IKTS, Germany). The synthesis procedure is described in the Experimental. Cross-sectional and top-view

SEM images of an as-synthesised membrane are shown in Fig. 1. The zeolite film appears to be even with a thickness of ca. 0.5 μm . The crystals composing the film are well-intergrown with a size of ca. 200 nm. No large defects (> 5 nm) could be detected by SEM, indicating high quality of the membrane. Fig. 2 shows an XRD pattern of membrane M2. The detected reflections were solely the expected reflections emanating from MFI zeolite and alumina (the support) indicating that no other phase was present in the membrane.

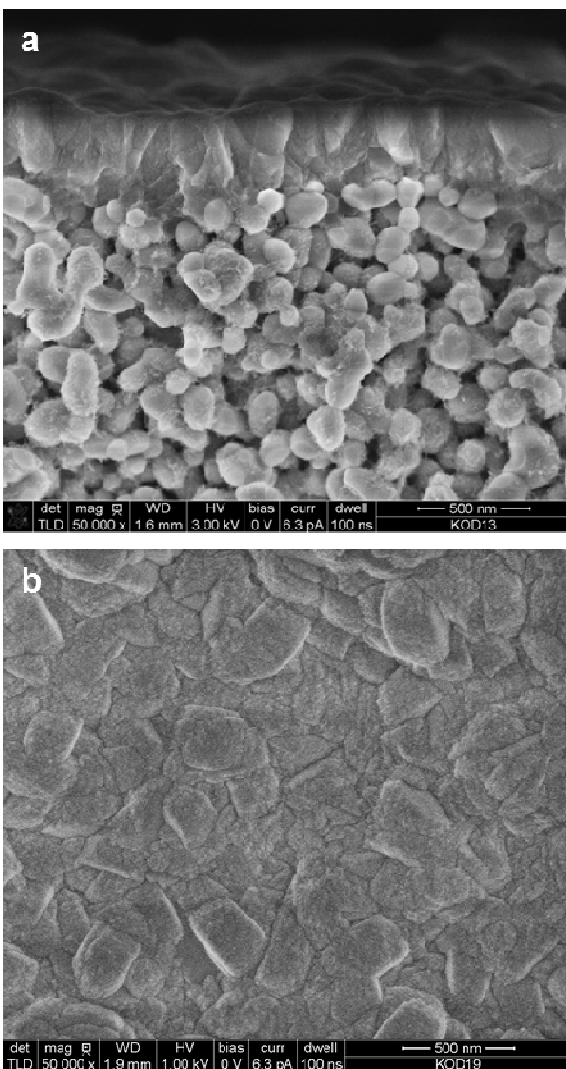


Fig. 1. Cross-sectional (a) and top-view (b) SEM images of an as-synthesised membrane.

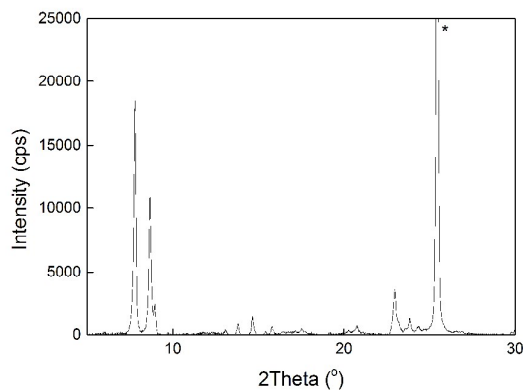


Fig. 2. An XRD pattern of membrane M2. The reflection marked with an asterisk emanates from the alumina support.

In order to estimate the amount of defects, the membranes were characterised by *n*-hexane/helium permoporometry^{15, 23} as described in ESI. In this technique, helium permeance through the membrane is measured as a function of *n*-hexane relative pressure. Table 1 reports permoporometry data for membrane M1. The helium permeance at a relative pressure of *n*-hexane of 0, i.e., the permeance through zeolite pores and defects, was as high as $53 \times 10^{-7} \text{ mol s}^{-1} \text{ m}^{-2} \text{ Pa}^{-1}$, which shows that the zeolite pores are open and rather permeable. As the relative pressure of *n*-hexane was increased, first zeolite pores and then increasingly larger defects were blocked by *n*-hexane, and, therefore, the helium permeance decreased. The amount of defects in terms of relative areas was estimated from the permoporometry data as described in ESI. The total amount of defects in the membrane was very low, constituting less than 0.1% of the total membrane area, indicating a very high quality of the membrane. The main type of defects (ca. 99.4% of all defects) was micropore defects, i.e., defects < 2 nm in size. Such defects are most likely narrow open grain boundaries, as discussed in detail in our previous work.²⁴ Essentially no large defects (> 5 nm) were detected by permoporometry, which is consistent with the SEM observations.

Table 1. Permoporometry data for membrane M1.

P/P_0	He permeance ($10^{-7} \text{ mol s}^{-1} \text{ m}^{-2} \text{ Pa}^{-1}$)	Defect interval (nm)	Relative area of defects ^a (%)
0	53	–	
3.8×10^{-4}	1.25	0.71 – 0.73	0.06
6.7×10^{-4}	0.70	0.73 – 0.80	0.03
2.1×10^{-3}	0.36	0.80 – 1.04	0.01
1.1×10^{-2}	0.23	1.04 – 1.78	0.003
1.5×10^{-1}	0.11	1.78 – 5.43	0
4.5×10^{-1}	0.11	> 5.43	0.0006
		Total:	0.10

^a Area of defects per total membrane area

Separation experiments

Fig. 3 shows permeances of CO₂ and H₂ measured for membrane M1 as a function of temperature when a 50/50 (v/v) mixture of CO₂/H₂ was fed to the membrane. The permeance of CO₂ was high and much greater than that of H₂ in the entire temperature range. This is a result of the fact that CO₂ is adsorbing much stronger in the membrane than H₂, thereby blocking the transport of H₂ and rendering the membrane CO₂-selective. The highest CO₂ permeance of ca. $78 \times 10^{-7} \text{ mol s}^{-1} \text{ m}^{-2} \text{ Pa}^{-1}$ was observed at the higher temperatures, i.e., 290–310 K. In general, the measured CO₂ permeances were consistent with those previously reported by our group², and one to two orders of magnitude higher than those reported for zeolite and polymeric membranes in the literature. With decreasing temperature, the permeances of both CO₂ and H₂ decreased, most likely due to decreasing diffusivity, as discussed in our earlier work². However, the permeance of CO₂ was reduced to a significantly lower extent than that of H₂ resulting in increasing selectivity of the membrane to CO₂ with decreasing temperature, which can be ascribed to increasing adsorption of CO₂ with decreasing temperature. At the lowest investigated temperature of 235 K, the permeance of H₂ was as low as $0.3 \times 10^{-7} \text{ mol s}^{-1} \text{ m}^{-2} \text{ Pa}^{-1}$, whereas the permeance of CO₂ was still as high as $62 \times 10^{-7} \text{ mol s}^{-1} \text{ m}^{-2} \text{ Pa}^{-1}$.

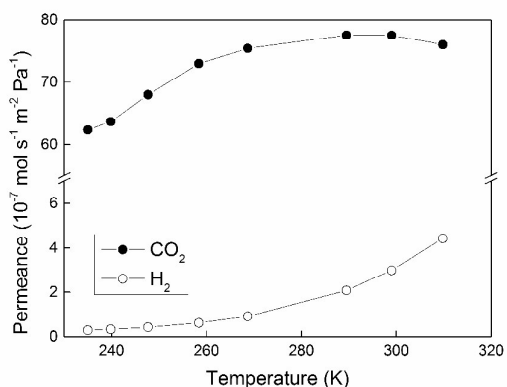


Fig. 3. Permeances of CO₂ and H₂ measured for membrane M1 as a function of temperature.

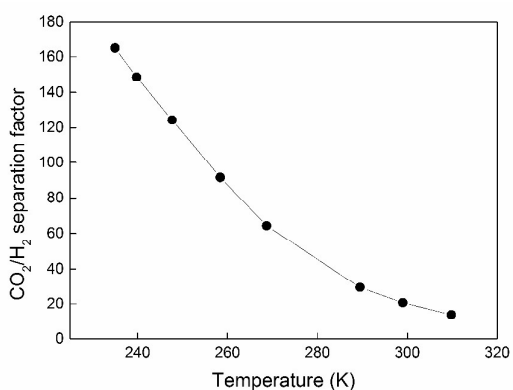


Fig. 4. CO₂/H₂ separation factor recorded for membrane M1 as a function of temperature

Fig. 4 illustrates CO₂/H₂ separation factors recorded for membrane M1 as a function of temperature. With decreasing temperature, the separation factor was increasing to as high as 165 at the lowest investigated temperature of 235 K. At these conditions, the CO₂ concentration in the permeate was as high as 99.4%. Table 2 shows the CO₂ fluxes, the concentration of CO₂ and H₂ in the permeate stream and the CO₂/H₂ membrane selectivities. The latter term denotes the ratio of CO₂ and H₂ permeances (not to be confused with the separation factor). The observed CO₂ flux was very high, i.e., $350\text{--}420 \text{ kg m}^{-2} \text{ h}^{-1}$, in the entire temperature range. As discussed in our earlier work², the high CO₂ flux is a result of the very low zeolite film thickness, strong CO₂ adsorption and high CO₂ diffusivity in the zeolite pores, and a relatively high CO₂ partial pressure difference of 3.5 bar across the membrane. The CO₂ flux was decreasing with decreasing temperature, i.e., similar to the CO₂ permeance. Since the membrane was highly CO₂-selective in the entire temperature range, the CO₂ concentration in the permeate was close to 100%, see Table 2. Consequently, the partial pressure of CO₂ in the permeate was nearly constant at 1 bar, resulting in almost the same partial pressure difference of CO₂ across the membrane (ca. 3.5 bar) at all temperatures. As a result, the CO₂ flux was varying with temperature in an almost identical manner as the CO₂ permeance. At 253 K, the separation factor was almost as high as 120 with a CO₂ flux of ca. $400 \text{ kg h}^{-1} \text{ m}^{-2}$, which is 133 times higher than that ($3 \text{ kg h}^{-1} \text{ m}^{-2}$) reported for the highly CO₂-selective SAPO-34 zeolite membranes at similar experimental conditions¹³. It is also worth noting that the total duration of the separation experiments was ca. 6 h. During this time, the membrane was constantly exposed to a high flow of gas at elevated pressure. Despite this, no indication of deteriorating membrane quality was observed indicating good membrane stability at these experimental conditions. Evaluation of the long-term stability of the membranes would, however, require an industrial gas supply due to the large consumption of gas and the associated high costs, which was beyond the scope of the present work.

Table 2. CO₂ flux, permeate concentration and CO₂/H₂ membrane selectivity observed for membrane M1.

T (K)	CO ₂ flux (kg h ⁻¹ m ⁻²)	Permeate concentration (mol. %)		CO ₂ /H ₂ membrane selectivity
		CO ₂	H ₂	
310	423	93.22	6.78	17
300	429	95.36	4.61	26
290	428	96.71	3.28	37
270	420	98.47	1.53	82
260	406	98.91	1.08	117
250	383	99.20	0.80	159
240	364	99.33	0.67	189
235	356	99.40	0.60	210

In order to study reproducibility of the separation results, another membrane (denoted M2) with defect distribution similar to that for membrane M1 was evaluated for CO₂/H₂ separation in the temperature range of 235–270 K using a feed pressure of 9 bar. The separation data for membrane M2 summarised in Table 3 were well comparable to those for membrane M1, illustrating good reproducibility of the separation results.

Table 3. CO₂/H₂ separation data recorded for membrane M2.

T (K)	CO ₂ flux (kg h ⁻¹ m ⁻²)	CO ₂ /H ₂ separation factor	CO ₂ /H ₂ membrane selectivity
270	448	84	107
260	407	114	145
250	404	129	165
240	341	189	242
235	303	202	258

A summary of the best CO₂/H₂ separation data reported for zeolite membranes in the literature is depicted in Fig. 5. Fig. 5 also shows the data obtained in the present work for randomly oriented MFI membranes, and in our previous work²⁵ for *b*-oriented MFI membranes. The separation performance of the membranes prepared in the present work is well above the upper bound for the best zeolite membranes reported previously. The observed separation performance was also greater than that of high quality *b*-oriented MFI membranes recently prepared by our group²⁵. Since the amount of defects in both types of membranes was nearly identical, the difference in the separation performance between the randomly oriented and *b*-oriented MFI membranes should most likely emanate from the difference in the adsorption affinity of the membranes for CO₂. The *b*-oriented MFI membranes reported in our previous work²⁵ were prepared in a fluoride medium at near-neutral pH, whereas the membranes in the present work were synthesised in an alkaline medium. MFI zeolites prepared in a fluoride medium have been shown^{26, 27} to be less hydrophilic than similar MFI zeolites prepared in a hydroxide medium due to the lower amount of Si–OH groups. In addition, the *b*-oriented MFI-F membranes prepared in our previous work²⁵ should most probably contain less aluminium in the structure than the present MFI-OH membranes as the leaching of aluminium from the support during the film synthesis should be reduced at near-neutral pH. The lower aluminium content should also result in a less hydrophilic nature of the *b*-oriented MFI-F membranes. At the same time, the adsorption affinity of MFI zeolites for CO₂ has been demonstrated^{28–30} to increase with increasing hydrophilicity. Thus, the present randomly oriented MFI-OH membranes, being somewhat more hydrophilic, should have greater adsorption affinity for CO₂ than the *b*-oriented MFI-F membranes, and, hence, should be more selective to CO₂, as observed in the present work. It is also worth noting that in a previous work¹⁹ we compared randomly oriented MFI membranes prepared in fluoride and alkaline

media. A similar trend was observed for CO₂/H₂ separation, i.e., the MFI-OH membranes were more selective to CO₂ than the MFI-F membranes. In contrast, the latter membranes were more selective to *n*-butanol, as should be expected for a less hydrophilic membrane. It should also be noted that the preparation procedure for the randomly oriented MFI membranes is rather well-established and it is much simpler than that for the *b*-oriented MFI membranes. Hence, at this moment, the randomly oriented high flux MFI membranes should be easier to scale-up.

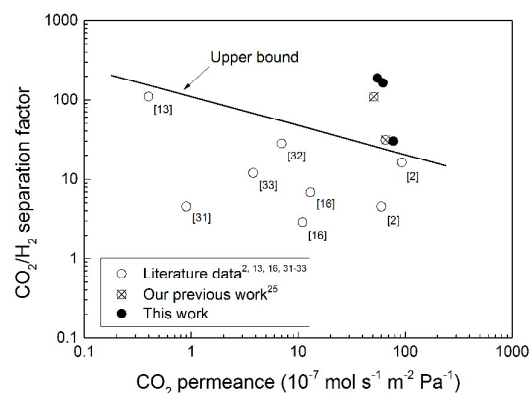


Fig. 5. Summary of the best CO₂/H₂ separation data reported for zeolite membranes in the literature^{2, 13, 16, 31–33} as well as the data obtained in our previous work²⁵ and in the present work.

Cost estimation

In order to evaluate the economic viability of our membranes, the estimated cost of the membrane modules was compared with that of the commercially available spiral-wound modules used in a natural gas processing plant³⁴. The latter modules were assumed to contain MTR PolarisTM membranes recently evaluated for CO₂/H₂ separation in commercial scale.³ The zeolite membrane modules were assumed to contain zeolite membranes supported on 19-channel α -alumina tubes with the same CO₂ permeance as measured experimentally for the disc-shaped membranes in the present work. The results of the cost comparison are summarised in Table 4. The costs were estimated for a membrane process with a separation capacity of 300 ton CO₂/day at a CO₂ partial pressure difference across the membrane of 10 bar and room temperature. For this purpose, a polymeric membrane process would need as many as 20 membrane modules, whereas a ceramic MFI zeolite membrane process would only require one module. The estimation demonstrates that the total cost of modules with membranes in the case of high flux MFI membranes was approx. 30% lower than that of high performance commercial polymeric membranes. This is due to the much greater permeance of the MFI membranes resulting in a very low membrane area needed for the separation process. Furthermore, the MFI membranes display much higher CO₂/H₂ selectivity (26 and 210 at 300 and 235 K, respectively, see

Table 2) than polymeric membranes (10–12 at room temperature). It is also worth noting that the equipment needed for the high flux MFI membrane process will be very compact, as schematically illustrated in Fig. 6. Hence, the prepared MFI membranes have great market potential for separation of CO₂ from synthesis gas.

Table 4. A comparison between the cost of commercial-scale MTR Polaris™ membrane modules and the cost of modules with high flux MFI membranes prepared in the present work for separation of 300 ton CO₂/day.

Parameter	Polaris membranes	MFI membranes
CO ₂ permeance (10 ⁻⁸ mol s ⁻¹ m ⁻² Pa ⁻¹)	20 ³	775
Module type	Spiral-wound	Multichannel tubes (19 channels)
Membrane area in one module (m ²)	20 ³	10 ³⁵
Membrane area needed (m ²)	395	10
No. of modules needed	20	1
Cost of membranes and module (USD/m ²)	10 ³⁴	2,600**
Total cost of modules with membranes (USD)	39,500	26,500

**The cost of the module was estimated by Fraunhofer IKTS (Dr.-Ing. H. Richter, personal communication, 6 March 2015).

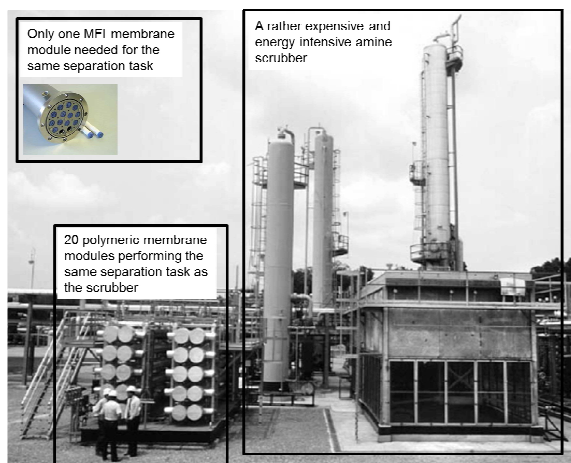


Fig. 6. A comparison between the size of an amine scrubber system, polymeric membrane system and high flux MFI membrane system performing the same separation task. The background picture was adapted from Dortmund and Doshi³⁶. The ceramic membrane module image was provided by Inopor^{®35}.

Conclusions

Ultra-thin randomly oriented high flux MFI zeolite membranes were prepared and evaluated for CO₂/H₂ separation at a

temperature ranging from 235 to 310 K and a feed pressure of 9 bar. The observed membrane separation performance in terms both selectivity and flux was superior to that previously reported for CO₂-selective zeolite and polymeric membranes. An initial estimate of the cost of membrane modules revealed that the present membranes were more economically attractive than commercial-scale polymeric membranes. In addition, the ceramic zeolite membrane separation system would be much more space efficient than a system relying on polymeric membranes. The findings of the present work therefore suggest that the developed high flux MFI zeolite membranes have great potential for selective and cost-effective removal of CO₂ from synthesis gas.

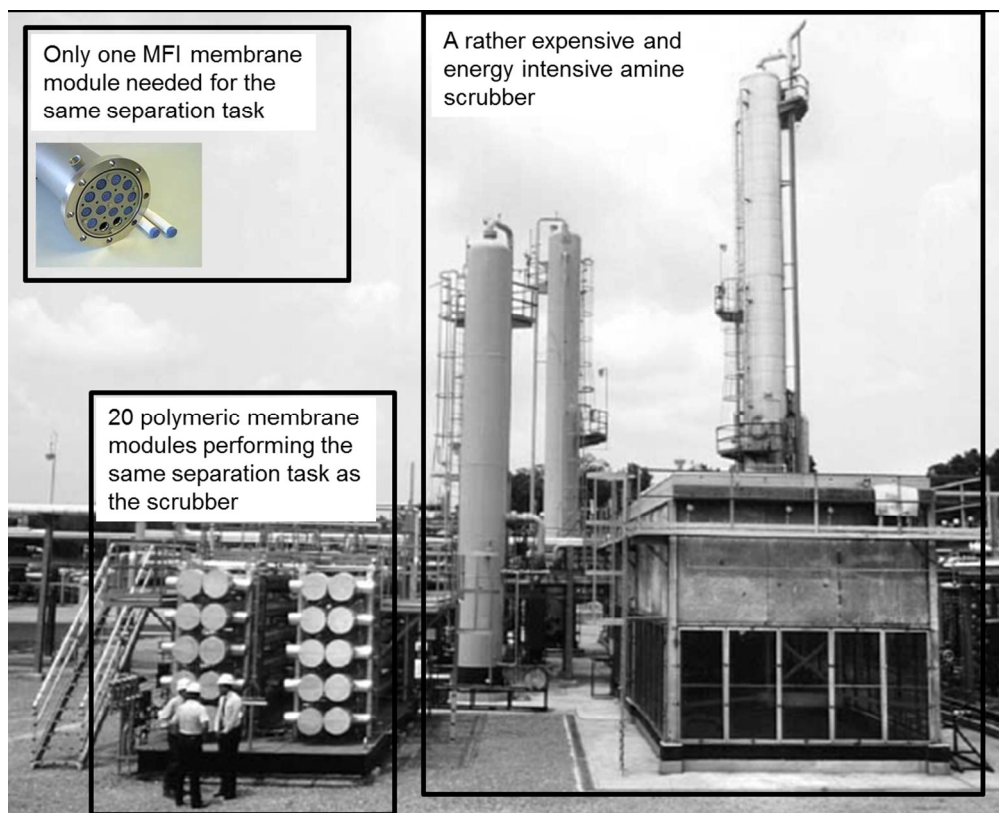
Acknowledgements

The Swedish Foundation for Strategic Research (SSF, grant no. RMA08-0018), the Swedish Research Council (VR, grant no. 2010-5317), the Swedish Research Council Formas (Grant no. 213-2013-1684), the Swedish Energy Agency (Grant no. 2013-006587) and Bio4Energy are gratefully acknowledged for financially supporting this work. Amirfarrokh Farzaneh is gratefully acknowledged for fruitful discussions.

Notes and references

- X. Yin, D. Y. C. Leung, J. Chang, J. Wang, Y. Fu and C. Wu, *Energy Fuels*, 2004, **19**, 305-310.
- L. Sandström, E. Sjöberg and J. Hedlund, *J. Membr. Sci.*, 2011, **380**, 232-240.
- H. Lin, Z. He, Z. Sun, J. Vu, A. Ng, M. Mohammed, J. Kniep, T. C. Merkel, T. Wu and R. C. Lambrecht, *J. Membr. Sci.*, 2014, **457**, 149-161.
- S. D. Kenarsari, D. Yang, G. Jiang, S. Zhang, J. Wang, A. G. Russell, Q. Wei and M. Fan, *RSC Advances*, 2013, **3**, 22739-22773.
- M. Pera-Titus, *Chem. Rev.*, 2013, **114**, 1413-1492.
- T. C. Merkel, H. Lin, X. Wei and R. Baker, *J. Membr. Sci.*, 2010, **359**, 126-139.
- P. Luis, T. Van Gerven and B. Van der Bruggen, *Prog. Energ. Combust.*, 2012, **38**, 419-448.
- Membrane Technology & Research (MTR), <http://www.mtrinc.com>.
- R. W. Baker and B. T. Low, *Macromolecules*, 2014, **47**, 6999-7013.
- J. Caro and M. Noack, *Micropor. Mesopor. Mater.*, 2008, **115**, 215-233.
- E. Sjöberg, L. Sandström, O. G. W. Öhrman and J. Hedlund, *J. Membr. Sci.*, 2013, **443**, 131-137.
- J. Caro, M. Noack and E. Stefan, in *Advances in Nanoporous Materials*, Elsevier, 2010, vol. 1, pp. 1-96.
- M. Hong, S. Li, J. L. Falconer and R. D. Noble, *J. Membr. Sci.*, 2008, **307**, 277-283.
- J. Hedlund, J. Sterte, M. Anthonis, A. J. Bons, B. Carstensen, N. Corcoran, D. Cox, H. Deckman, W. de Gijnst, P. P.

- de Moor, F. Lai, J. McHenry, W. Mortier and J. Reinoso, *Micropor. Mesopor. Mater.*, 2002, **52**, 179-189.
15. J. Hedlund, D. Korelskiy, L. Sandström and J. Lindmark, *J. Membr. Sci.*, 2009, **345**, 276-287.
16. J. Lindmark and J. Hedlund, *J. Membr. Sci.*, 2010, **360**, 284-291.
17. L. Sandström, J. Lindmark and J. Hedlund, *J. Membr. Sci.*, 2010, **360**, 265-275.
18. P. Ye, E. Sjöberg and J. Hedlund, *Micropor. Mesopor. Mater.*, 2014, **192**, 14-17.
19. H. Zhou, D. Korelskiy, E. Sjöberg and J. Hedlund, *Micropor. Mesopor. Mater.*, 2014, **192**, 76-81.
20. D. Korelskiy, T. Leppäjärvi, H. Zhou, M. Grahn, J. Tanskanen and J. Hedlund, *J. Membr. Sci.*, 2013, **427**, 381-389.
21. M. Grahn and J. Hedlund, *J. Membr. Sci.*, 2014, **471**, 328-337.
22. J. Hedlund, F. Jareman, A. J. Bons and M. Anthonis, *J. Membr. Sci.*, 2003, **222**, 163-179.
23. D. Korelskiy, M. Grahn, J. Mouzon and J. Hedlund, *J. Membr. Sci.*, 2012, **417-418**, 183-192.
24. D. Korelskiy, P. Ye, H. Zhou, J. Mouzon and J. Hedlund, *Micropor. Mesopor. Mater.*, 2014, **186**, 194-200.
25. M. Zhou, D. Korelskiy, P. Ye, M. Grahn and J. Hedlund, *Angew. Chem., Int. Ed.*, 2014, **53**, 3492-3495.
26. Z. Qin, L. Lakiss, L. Tosheva, J.-P. Gilson, A. Vicente, C. Fernandez and V. Valtchev, *Adv. Funct. Mater.*, 2014, **24**, 257-264.
27. K. Zhang, R. P. Lively, J. D. Noel, M. E. Dose, B. A. McCool, R. R. Chance and W. J. Koros, *Langmuir*, 2012, **28**, 8664-8673.
28. J. A. Dunne, R. Mariwala, M. Rao, S. Sircar, R. J. Gorte and A. L. Myers, *Langmuir*, 1996, **12**, 5888-5895.
29. J. A. Dunne, M. Rao, S. Sircar, R. J. Gorte and A. L. Myers, *Langmuir*, 1996, **12**, 5896-5904.
30. R. Krishna and J. M. van Baten, *J. Membr. Sci.*, 2010, **360**, 323-333.
31. M. Kanezashi, *AIChE J.*, 2008, **54**, 1478-1486.
32. K. Kusakabe, T. Kuroda, K. Uchino, Y. Hasegawa and S. Morooka, *AIChE J.*, 1999, **45**, 1220-1226.
33. W. J. W. Bakker, F. Kapteijn, J. Poppe and J. A. Moulijn, *J. Membr. Sci.*, 1996, **117**, 57-78.
34. R. W. Baker and K. Lokhandwala, *Industrial and Engineering Chemistry Research*, 2008, **47**, 2109-2121.
35. Inopor®, www.inopor.com.
36. D. Dortmund and K. Doshi, *Chemical Engineering World*, 2003, **38**, 55-66.



211x171mm (150 x 150 DPI)