

Molecular BioSystems

Accepted Manuscript



This is an *Accepted Manuscript*, which has been through the Royal Society of Chemistry peer review process and has been accepted for publication.

Accepted Manuscripts are published online shortly after acceptance, before technical editing, formatting and proof reading. Using this free service, authors can make their results available to the community, in citable form, before we publish the edited article. We will replace this *Accepted Manuscript* with the edited and formatted *Advance Article* as soon as it is available.

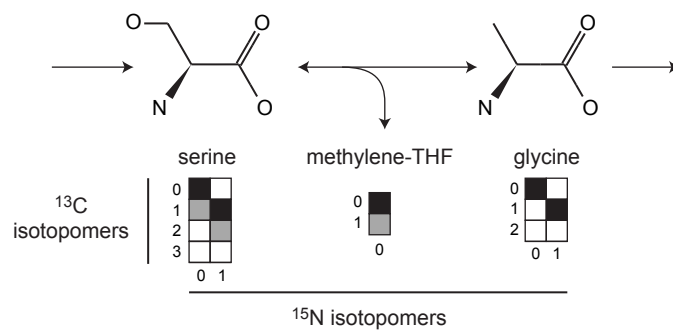
You can find more information about *Accepted Manuscripts* in the [Information for Authors](#).

Please note that technical editing may introduce minor changes to the text and/or graphics, which may alter content. The journal's standard [Terms & Conditions](#) and the [Ethical guidelines](#) still apply. In no event shall the Royal Society of Chemistry be held responsible for any errors or omissions in this *Accepted Manuscript* or any consequences arising from the use of any information it contains.



www.rsc.org/molecularbiosystems

Graphical abstract



Simultaneous tracing of carbon and nitrogen isotopes in human cells

Roland Nilsson^{1,2,*} and Mohit Jain^{3,*}

¹ Unit of Computational Medicine, Department of Medicine, Karolinska Institutet, Karolinska University Hospital, SE-17176 Stockholm, Sweden

² Center for Molecular Medicine, Karolinska Institutet, Karolinska University Hospital, SE-17176 Stockholm Stockholm, Sweden

³ Departments of Medicine and Pharmacology, University of California, San Diego, USA

* Corresponding authors. Email: roland.nilsson@ki.se; mjain@ucsd.edu

Short title: Simultaneous tracing of carbon and nitrogen isotopes

Keywords: metabolic flux analysis, cellular metabolism, mass isotopomer distributions, elementary metabolite unit, mass spectrometry, amino acid metabolism, nucleotide metabolism

Abstract

Stable isotope tracing is a powerful method for interrogating metabolic enzyme activities across the metabolic network of living cells. However, most studies of mammalian cells have used ^{13}C -labeled tracers only and focused on reactions in central carbon metabolism. Cellular metabolism, however, involves other biologically important elements, including nitrogen, hydrogen, oxygen, phosphate and sulfur. Tracing stable isotopes of such elements may help shed light on poorly understood metabolic pathways. Here, we demonstrate the use of high-resolution mass spectrometry to simultaneously trace carbon and nitrogen metabolism in human cells cultured with ^{13}C - and ^{15}N -labeled glucose and glutamine. To facilitate interpretation of the complex isotopomer data generated, we extend current methods for metabolic flux analysis to handle multivariate mass isotopomer distributions (MMIDs). We find that observed MMIDs are broadly consistent with known biochemical pathways. Whereas measured ^{13}C MIDs were informative for central carbon metabolism, ^{15}N isotopes provided evidence for nitrogen-carrying reactions in amino acid and nucleotide metabolism. This computational and experimental methodology expands the scope of metabolic flux analysis beyond carbon metabolism, and may prove important to understanding metabolic phenotypes in health and disease.

Introduction

Stable isotope tracing is a well-established method for measuring intracellular metabolic enzyme activities across the metabolic network of living cells¹. In this technique, cells are cultured with nutrients labeled with stable isotopes, and the resulting isotopic patterns in cellular metabolites are measured by mass spectrometry or NMR. While software for quantifying isotopic distributions is well established^{2,3}, a wide variety of methods are used for interpreting the resulting isotope data to draw conclusions about metabolism, ranging from manual inspection and qualitative reasoning to sophisticated model-based computational techniques for quantitative metabolic flux analysis⁴. While qualitative tracing methods have been important in biochemistry to systematically map metabolic pathways, quantitative methods for flux analysis have largely been employed in lower organisms⁵ and plants⁶, where precise information about central metabolism is important to optimize product yields or crops. More recently, stable isotope tracing has been applied to study the metabolism of mammalian cells grown in batch cultures⁷⁻¹¹, aiming to systematically understand human metabolism and identify enzymes or pathways that are affected in human diseases.

To date, the vast majority of studies have employed a single labeling strategy, typically using ¹³C-labeled substrates and focusing on central carbon metabolism, usually including glycolysis, the pentose phosphate pathway, and the tricarboxylic acid (TCA) cycle⁷. Using other stable isotopes, including ¹⁵N, ²H, ¹⁸O, and ³⁴S, could yield information about additional metabolic activities in a given experiment, or even allow for study of pathways not amenable to carbon labeling. For instance, metabolic flux analysis using deuterium ²H has proven useful to monitor redox reactions¹². Similarly, tracing nitrogen using ¹⁵N may provide valuable information on amino acid and nucleotide metabolism; oxygen tracers ¹⁸O could be used to monitor phosphates (PO₄) in energy metabolism; and sulfur isotopes (³⁴S) can inform on metabolism of cysteine, methionine and related sulfur-containing compounds¹³.

Here, we use a combination of ¹³C- and ¹⁵N-labeled tracers to interrogate carbon and nitrogen metabolism of human cells within a single experiment. Using high resolution mass spectrometry we can resolve and quantify pairwise combinations of ¹³C and ¹⁵N mass isotopomers, resulting in multivariate mass isotopomer distributions (MMIDs) that reflect the simultaneous cellular metabolism of these chemical elements. To systematically handle MMID data, we describe a generalization of the Elementary Metabolite Unit (EMU) framework¹⁴ that extends metabolic flux analysis to multiple elements. We discuss features of carbon and nitrogen metabolism observable in human cells with this method.

Materials and methods

Cell culture and metabolite extraction

Human HeLa cells were cultured in 6-well culture dishes using RPMI-1640 medium (Life Technologies) with 11mM glucose, of which 70% was U-¹³C-glucose (Cambridge Isotope Laboratories) and 2mM glutamine, of which 70% was U-¹³C,¹⁵N-glutamine (Cambridge Isotope Laboratories), and supplemented with 5% dialyzed FBS (Hyclone). Cell extracts were analyzed after 24 and 72 hour culture periods. HeLa cells were plated at a density that resulted in ~85% confluency (~1x10⁶ cells per well) at the end of the culture period, and to maintain a doubling time of ~30 hours throughout the culture period. At the completion of the culture period, spent medium was removed, cells rapidly washed with phosphate buffered saline to remove residual medium, and metabolites extracted using 1 mL of 100% HPLC grade methanol pre-cooled at -80°C. Cellular material was scraped in the cold methanol, collected and vortexed for 1 minute. Cellular material was centrifuged at 10,000 RPM x 10 min at 4°C and the organic supernatant containing extracted metabolites was collected and maintained at -80°C until analysis. Separate wells with identical plating were used for confirmation of final cell counts. Three independent biological replicates were used for all cell culture experiments.

Mass spectrometry and mass isotopomer distributions

Metabolites were assayed as previously described¹⁵ using liquid chromatography coupled to high resolution mass spectrometry (LC-MS). Liquid chromatographic separation was achieved using hydrophilic interaction chromatography (HILIC) employing an Atlantis HILIC column (150 x 2.1 mm; Waters, Milford, MA) or Luna NH2 column (5µm, 150 x 2 mm; Phenomenex) with both positive and negative electrospray ionization (ESI). LC was coupled to a high resolution Q Exactive Quadrupole-Orbitrap mass spectrometer (ThermoFisher) operating at 70,000 resolution, scanning a mass range of 50 – 1000 m/z. Metabolites were identified by retention time and m/z from pure standards.¹⁵ Observed m/z accuracy was maintained at <5ppm. Chromatographic peaks areas were obtained by manual integration using in-house software. Peaks corresponding to mass isotopomers were manually inspected to verify identical chromatographic peak shapes, and false isotopes were excluded. Mass isotopomer distributions were calculated for each sample by normalizing values to the total peak area for all mass isotopomers of each metabolite.

Uptake/release measurements

Absolute concentrations of glutamine, glutamate and lactate in fresh (0h) and spent (72h) culture medium were measured using a commercial YSI 2900 bioanalyzer.¹⁵ Net rates consumption or release of glutamine, glutamate and lactate per cell were calculated by normalizing to cell proliferation, as previously described¹⁵, assuming constant fluxes over time. Rates of acetate, alanine, aspartate,

citrulline, and biomass components (protein, RNA, glycogen, and glutathione) were estimated from literature values (S3 Dataset) for the purpose of bounding the model fluxes, assuming 10% error.

Metabolic network model

The metabolic network model used in this work is fully described in the ESI. Reaction stoichiometry were obtained from a previously published model of human cellular metabolism¹⁶. Atom maps were obtained from KEGG¹⁷ and were manually curated. Molecular symmetry for fumarate, succinate and urea was handled using EMU equivalence classes, as previously described¹⁴.

Multivariate mass isotopomer distributions

To represent the isotopic labeling state of multiple chemical elements, we introduce multivariate mass isotopomer distributions (MMIDs). Denote the elements by $e = 1, \dots, E$, and consider a metabolite i having n_e^i atoms of element e . Then any possible multivariate mass isotopomer of this metabolite can be represented by an E -dimensional vector a taking values in the array $G_i = \{0, \dots, n_1^i\} \times \dots \times \{0, \dots, n_E^i\}$, representing all possible combinations of mass isotopomers for each element. An MMID of metabolite i is then a probability (frequency) distribution x_a^i over this array, satisfying $\sum_a x_a^i = 1$ and $x_a^i \geq 0$ for all $a \in G_i$. For example, if considering ¹³C and ¹⁵N isotopes, then the MMID of glutamine (C₅H₁₀O₃N₂) is a probability distribution over $G_i = \{0, 1, 2, 3, 4, 5\} \times \{0, 1, 2\}$, as in Fig. 1D. Note that it is not sufficient to consider the sets of atoms for each element separately as 1-dimensional MIDs: this would be correct only if the isotopomers of each element are independent, so that the full MMID is a product distribution.

To relate MMIDs to fluxes in metabolic networks, we generalize of the Elementary Metabolite Unit (EMU) framework¹⁴ to multiple elements. We define a multiple-element EMU (MEMU) of a given metabolite as a list of subsets of atoms, one for each element, not necessarily contiguous in the molecular structure. Again, the mass isotopomers of an MEMU are elements of an E -dimensional array, and the MMID of an MEMU is a probability distribution on this array. Cleavage or unimolecular reactions are viewed simply as a transfer of an MEMU, which means their MMIDs must be equal. For a condensation reaction forming MEMU i from MEMUs j and k , the product MMID x^i is a now multidimensional convolution of the MMIDs x^j, x^k of the substrates: for each $a \in G_i$,

$$x_a^i = \sum_{b,c: a=b+c} x_b^j x_c^k, \quad b \in G_j, c \in G_k \quad (1)$$

Based on these rules, decomposition of the metabolic network model to MEMU networks was done using the algorithm previously described for EMUs¹⁴. Equation systems that relate fluxes to these

MMIDs at steady state were generated from atom maps using Mathematica v.10 (Wolfram Research; code is available from the authors upon request).

Given the MEMU decomposition, for each product MEMU, if reactions with fluxes v_1, \dots, v_N transfer MEMUs with MMIDs x^1, \dots, x^N to the same product MEMU, then at steady-state, the product's MMID x^0 is a linear combination

$$v_0 x_a^0 = \sum_{i=1}^N v_i x_a^i \quad (2)$$

for each multivariate mass isotopomer a , where $v_0 = \sum_{i=1}^N v_i$ is the total flux “through” the product. The only difference between (2) and the 1-dimensional case¹⁴ is that the MMID x_a is no longer a vector but an E -dimensional array (for carbon-nitrogen data, $E = 2$, so x_a is a matrix), and convolutions must be calculated according to equation (1). While time-dependent equations for isotopic nonstationary data can similarly be derived, as previously described¹⁸, we here consider the steady-state case.

Metabolic flux analysis

The vector of metabolic fluxes v was estimated by fitting the MEMU network model to measured MMID data using a previously described nonlinear optimization method¹⁹, as follows. Let x denote the “flattened” vector collecting all mass isotopomer fractions of all MMIDs, and write $g(x, v) = 0$ to represent the collection of all equations (1) and (2) for all MEMUs, relating fluxes v to all MMIDs in the system. For metabolites present in both mitochondria and cytosol, the observed MMIDs y was modeled as a linear mixture $Mx_A = y$, where A is an index vector for the corresponding model MMIDs and M is a mixing matrix. We consider both M , x and v as free variables, and estimate them by solving the constrained optimization problem

$$\begin{aligned} \min_{M, x, v} & (Mx_A - y)\Sigma_y^{-1}(Mx_A - y)^T + (v_B - w)\Sigma_w^{-1}(v_B - w)^T \\ \text{s.t. } & g(x, v) = 0, \quad \forall i: \sum_a x_a^i = 1, \quad Sv = 0 \\ & x \geq 0, \quad v \geq 0 \end{aligned}$$

where B is an index vector for the measured fluxes w , and S is the stoichiometry matrix (needed here because cofactor balances are not implied by the MEMU balance equations). Note that, while the objective is linear in x , the constraints $g(x, v) = 0$ are nonlinear due to equation (1). Assuming independent errors, the covariance matrices Σ_y and Σ_w were chosen to be diagonal. Since all possible mass isotopomers do not occur practise, many MI fractions were close to or identical to zero, resulting

in near-zero standard deviations $\sigma_i = \sqrt{(\Sigma_y)_{ii}}$ on the diagonal. To avoid a singular covariance matrix, we therefore enforced a minimum bound $\sigma_i > 0.01$.

Optimization was done using CONOPT v.3.15 (ARKI Consulting & Development A/S) controlled via the GAMS modeling language (GAMS Software GmbH). A separate optimization problem was generated for each biological replicate in order to inspect the resulting variation in flux estimates. To check for occurrence of local minima, each problem was solved 100 times starting from randomly chosen initial points. Since most flux solutions were close together with nearly identical objective values, the centroid of these 100 solutions was taken as the final estimate.

Results

Measuring multivariate MIDs in intracellular metabolites

To investigate the metabolism of carbon and nitrogen in human HeLa cells, cells were labeled with 70% U-¹³C-glucose and 70% U-¹³C,¹⁵N-glutamine and cell extracts were taken at 24h and 72h time points. The fraction of 70% labeled tracer was chosen to yield information-rich isotopomer patterns, as fully labeled substrates tend to produce less informative data²⁰. The mass shift due to incorporation of a single ¹³C atom in a downstream metabolite is ~1.003 u, while that due to ¹⁵N is ~0.997 u. Hence, isotopomers due to ¹³C or ¹⁵N incorporation differ by ~0.006 u, which is readily detectable in small metabolites using high resolution mass spectrometers, operating at >70,000 mass resolution. In principle, it is therefore possible to distinguish any pairwise combination of ¹³C and ¹⁵N mass isotopomers; we refer to these combinations as multivariate mass isotopomers (MMIs). Cellular metabolites were analyzed by LC-MS which fully resolved isotopic peaks from adjacent carbon and nitrogen MMIs (m/z difference = 0.006) in metabolites having m/z of approximately < 250. An example of separation of carbon/nitrogen MMIs in glutamine is shown in Fig. 1A. For larger metabolites, adjacent MMIs were not completely baseline resolved, as shown for glutathione (Fig. 1B), but centroiding of m/z spectra still yielded intensity estimates for peak resolved peaks, which appeared to be stable during chromatography (Fig. 1C), indicating that MMIs can still be measured.

A total of 38 metabolites with high quality peaks were identified using pure standards, of which 25 contained at least one nitrogen atom. For each of these metabolites, we calculated the fractional abundance of all possible carbon-nitrogen MMIs, resulting in 2-dimensional MMI distributions (MMIDs). As an example, the MMID for glutamine is shown in Fig. 1D,E. Measured MMIDs ranged in complexity from glycine (3 x 2 = 6 MIs) to ADP (11 x 6 = 66 MIs), for a total of 616 carbon-nitrogen MMIs monitored (S3 Dataset), compared to 258 when considering ¹³C isotopes only. Of these 616 MIs, 328 were below sensitivity thresholds in all samples, indicating that they are not synthesized by cells in these conditions. Nonzero mass isotopomers were highly reproducible over biological

replicates (independent cell cultures), with standard deviation less than 0.01 in more than 90% of cases (Fig. 1F). However, low-abundance mass isotopomers were often systematically underestimated, probably reflecting loss of signal near threshold levels (Fig. S1). With a few exceptions discussed below, MMIDs were similar between the 24h and 72h time points, indicating that in most pathways monitored, metabolic and isotopic steady-state was reached already at 24h (Fig. S2). In the remainder of analyses, we consider the metabolic state at the 24h time point.

Network model and fit to data

The resulting MMID dataset is quite complex, reflecting a variety of activities in the metabolic network, and is difficult to analyze manually. To aid in systematic interpretation, we constructed a model of metabolism covering the major interrogated pathways, including glycolysis, the pentose phosphate shunt, and the TCA cycle, as well as metabolism of nonessential amino acids, nucleotide and glutathione biosynthesis, and a simplified biomass synthesis reaction. This model consists of 125 reactions and 51 uptake or release fluxes, includes cofactor balancing, and covers 121 metabolites compartmentalized into mitochondria and cytosol. The atom map for carbons and nitrogens comprised 1,403 atom-to-atom mappings in total. The eight essential amino acids measured (his, ile, leu, lys, met, thr, trp, val) are not synthesized in human cells and contained no label from glucose or glutamine as expected, and were omitted from the model. Also, the MMID glucose-6-phosphate (g6p) was poorly measured and was omitted as well. The full model description is given in ESI.

To relate carbon-nitrogen MMIDs to metabolic fluxes in this model, we developed an extension of the Elementary Metabolite Unit (EMU) mathematical framework¹⁴ that describes MMIDs as a function of the metabolic flux state and the metabolic tracers (see Methods for details). Briefly, a multi-element EMU (MEMU) of a given metabolite is a list of subsets of atoms, one for each element. These MEMUs allows representing reactions that cleave metabolites into smaller fragments, or condense metabolites into larger ones: for example, glycine can be derived from the MEMU consisting of carbons 1,2 and nitrogen 4 of serine. From the atom mappings for all reactions in the metabolic network model, we can generate the minimal set of MEMUs whose MMIDs must be calculated to relate the observed MMIDs to metabolic fluxes. For the present model, this analysis resulted in 575 two-dimensional carbon-nitrogen EMUs, for a total of 3,317 MMIs.

Metabolic fluxes were estimated by fitting this MEMU model to the measured MMID and metabolite uptake/release data. Of the 29 measured metabolites used to fit the model, 12 were present in both the cytosol and mitochondria compartments; these were modeled using linear mixtures, whose coefficients were estimated from data (see Methods for details). A separate model fit was performed for each biological replicate ($n = 3$) and for each time point. In most cases, fitted MMIDs were highly similar between replicates (Fig S3). While most measured MMIDs agreed well with model estimates (Fig 2A), were obtained rather large errors for glutamyl-cysteine, ADP and UDP-glucose (Fig 2B), leading to higher total squared error (598—663 across replicates) than allowed by the chi-square criterion

(95% χ_2 quantile = 401). This likely reflects inaccurate or biased estimates of these MMIDs and/or lack of metabolic steady state for nucleotide metabolism. For this reason, quantitative estimates of metabolic fluxes in this model should be considered uncertain; however, it is still possible to gain insight into metabolism by analyzing those MMIDs that fit the model.

Amino acid metabolism

The carbon-only MID of glutamate was consistent with synthesis from consumed glutamine via glutaminase, with partial recycling from alpha-ketoglutarate (Figure 3A). The full carbon-nitrogen MMID of glutamate, however, exhibited markedly less of the $^{13}\text{C}_5^{15}\text{N}_1$ mass isotopomer than would be expected if synthesized solely from glutamine (Fig 3A, 1F). This suggested that glutamate MMID mostly reflects cytosolic glutamate, which should contain less $^{13}\text{C}_5^{15}\text{N}_1$ due to influx of ^{12}N from other amino acids via reversible transamination reactions (Fig 3B). The MMID of proline indicated that approximately 55% of this intracellular amino acid is synthesized from cytosolic glutamate (Fig 3C), with the remainder originating from uptake from medium or an unlabeled precursor. Of the remaining amino acids that can be synthesized by HeLa cells²¹, the MMID for alanine was consistent with synthesis from pyruvate, and nearly all aspartate was derived from oxaloacetate, while asparagine, serine, and glycine were not synthesized from glucose or glutamine (Fig. S3).

The carbon skeleton of arginine was not synthesized, consistent with arginine being essential for HeLa cells²¹. In addition, both nitrogens in arginine were unlabeled, consistent with the lack of an active urea cycle in these cells²². Disposal of excess nitrogen according to the model was mainly in the form of ammonium and glutamate (alanine synthesis could not be estimated accurately). Ornithine, an important precursor of polyamines required by proliferating cells, was unlabeled, indicating that it is synthesized from arginine, not from glutamate. Taken together, these results indicate that carbon-nitrogen MMIDs can provide additional information on amino acid metabolism compared to carbon labeling alone.

Nucleotides

Since *de novo* synthesis of nucleotides requires nitrogen, we anticipated that carbon-nitrogen MMIDs may be valuable for studying nucleotide metabolism as well. Due to low LC-MS peak intensities, estimated MMIDs for nucleotides were not accurate enough to allow for quantitative flux analysis, as seen in large squared errors for these metabolites (Fig. 2B). Nevertheless, the measured MMID of adenosine disphosphate (ADP) was broadly consistent with the known pathway of *de novo* purine synthesis (Fig. 4A,B). Incorporation of a labeled ribose moiety was evident from the $^{13}\text{C}_5$ carbon mass isotopomer alone. Importantly, carbon-nitrogen MMIs provided evidence of *de novo* synthesis of the purine ring, during which labeled nitrogen is incorporated from glutamine and glutamine-derived aspartate, while the carbons of the purine ring derive from unlabeled glycine, serine and CO_2 . It was evident that purine nucleobase salvage did not occur in these cells, which would appear as a $^{13}\text{C}_5^{15}\text{N}_0$

isotopomer, which was not observed (Fig. 4A). About 40% of the purine pool remained unlabeled ($^{13}\text{C}_0^{15}\text{N}_0$), suggesting that only 60% of purines were *de novo* synthesized at the 24h time point, with the remainder obtained from a pre-existing unlabeled purine pool, possibly including turnover of RNA (Fig. 4B).

For pyrimidines, UDP-glucose was the only pyrimidine-containing compound definitively identified from this experiment (Fig. 4C). While we could not resolve all carbon-nitrogen MMIs in this large molecule ($m/z = 565$), some MMIs could be identified without risk of confounding. The abundant $^{13}\text{C}_6^{15}\text{N}_0$ MMI indicated incorporation of labeled glucose ($^{13}\text{C}_6$) into pre-existing unlabeled UDP, which may reflect ongoing glycogen synthesis. The presence of various $^{15}\text{N}_1$ and $^{15}\text{N}_2$ mass isotopomers indicated synthesis of the pyrimidine ring from aspartate, glutamine and CO_2 . The model estimated 75% of pyrimidines to be *de novo* synthesized at 24h (Fig. 4D). As with purines, there was no evidence of salvage of pyrimidine nucleobases, since $^{13}\text{C}_5^{15}\text{N}_0$ or $^{13}\text{C}_{11}^{15}\text{N}_0$ MMIs were not observed (Fig. 4C); this was expected since the medium did not contain these metabolites. In summary, the carbon-nitrogen MMIDs of nucleotides were in good agreement with the known metabolic network structure, and provided evidence of *de novo* nucleotide synthesis and turnover.

Discussion

Our results indicate that simultaneous tracing of isotopes in multiple elements such as ^{13}C and ^{15}N is experimentally and computationally feasible, and allows for a more detailed analysis of the metabolic network than with single ^{13}C labeling alone. In particular, amino acid metabolism and nucleotide synthesis are clearly observable with this approach. Although this information might also be obtained using additional ^{13}C tracers in parallel labeling experiments, as reported by others²³, multiplexing tracers may generate more information per experiment, and provides independent, direct evidence for nitrogen metabolism. Our computational framework also allows handling other isotopes of interest, such as ^2H , ^{18}O or ^{24}S , in a uniform, systematic manner. The multivariate methods presented herein is a straightforward generalization of the EMU methodology. In our experience, the increase in mass isotopomer variables is not prohibitively large: for the model used herein, we obtained a total of 3,317 MMI variables using carbon-nitrogen EMUs, compared to 1,971 when treating carbon only. Also, introducing additional elements tends to result in more and smaller EMU subnetworks, which reduces the computational complexity of solving EMU balance equations. Methods based on the cumomer framework²⁴ can be easily extended along the same lines.

While our computational method can simultaneously track isotopes in any number of elements, a practical limitation is that low-abundance metabolites become more difficult to measure as the metabolite pool is divided into a large number of isotopomers. For example, if one would consider the isotopes of ^{13}C , ^2H , ^{15}N , and ^{18}O simultaneously, even a simple metabolite such as serine ($\text{C}_3\text{H}_7\text{O}_3\text{N}$) has a MMID with dimensions $4 \times 8 \times 3 \times 2$ (192 isotopomers total). Therefore, multiple isotopes will

likely be most effective when studying compounds that generate strong LC-MS peaks. In addition, mass resolution limits what isotopes can be confidently resolved, particularly in larger metabolites such as UDP-glucose. Moreover, natural $^{34}\text{S}_1$ isotopomers are present at +1.996 Da above the base isotopomer with ~4% relative abundance, and may be confounded with $^{15}\text{N}_2$ mass isotopomers at +1.994 Da. In our data, only glutamylcysteine ($\text{C}_8\text{H}_{13}\text{N}_2\text{O}_5\text{S}$) and reduced glutathione ($\text{C}_{10}\text{H}_{16}\text{N}_3\text{O}_6\text{S}$) could theoretically generate both $^{15}\text{N}_2$ and $^{34}\text{S}_1$ mass isotopomers, and in these cases $^{15}\text{N}_2$ was not present, but this caveat remains important. In our study, a mass resolution of 70,000 was sufficient for all but the largest metabolites. Higher resolution mass analyzers could theoretically allow using multiple isotopes to generate more rich data. The MMID approach could also be useful with other analytical methods, in particular the recently introduced high resolution GC-Orbitrap instruments. Future work could also explore combining the MMID methodology with data-dependent tandem mass spectrometry to determine positional isotope incorporation from MMIDs of metabolite fragments (MEMUs).

The use of multiple isotopes markedly increases the number of measured mass isotopomers, which provides additional information, but also reveals discrepancies that may go unnoticed when fitting carbon isotopomers only. While more measurements is of course desirable, it also places high demands on an accurate model of cellular metabolism, rendering model fitting more difficult; this was previously seen in a large study ¹⁹ of *E. coli* metabolism, consisting of 162 measured mass isotopomers (carbon only) from 13 metabolites. Our analysis required fitting 462 carbon-nitrogen mass isotopomers from 29 metabolites, and although our model agreed reasonably well with data, we were unable to reach a statistically acceptable fit, particularly for nucleotides. Partly, this may be due to model errors, such as neglected reactions, substrate channeling, and metabolite pools that have not completely reached steady state. Also, our model includes balancing of cofactors like NAD and NADP, which imposes additional constraints rarely included in metabolic flux analyses. However, it is also evident that the error model underlying the standard χ_2 model fit criterion (zero bias, normal distributed residuals) is not fully appropriate for orbitrap mass spectrometers, as low abundance mass isotopomers were systematically underestimated (Fig. S1). Future work should explore alternative error models for such data in order to take full advantage of the rich isotopomer patterns observable with high resolution mass spectrometry instruments.

In addition to establishing a framework for isotope tracing with multiple elements, this study also revealed a number of interesting metabolic features of the HeLa cell line. These cells synthesized only a few amino acids, namely glutamate, aspartate, alanine and proline under standard culture conditions, while the remaining are presumably obtained from the growth medium. Interestingly, the amino acids synthesized generally appear to have important roles in central metabolism independent of protein synthesis: glutamate is a key amine group donor in various amino transferases; aspartate is involved in the malate-aspartate shuttle, which is known to be active in a variety of cultured cells ²⁵; and alanine

has been suggested to act as an ammonia scavenger²⁶. Why proline is synthesized to a large extent despite being present in the medium is not clear, although it has been hypothesized to act as a redox carrier in mitochondria²⁷. In addition, while some cell lines have been reported to be dependent on serine synthesis from glucose²⁸, we find little evidence of serine synthesis in HeLa cells. Indeed, a recent report indicated that serine synthesis varies dramatically between cell types²⁹. The regulation of specific amino acid synthesis pathways by amino acid availability is still not well understood³⁰, and we anticipate that our method may be useful for studying these processes. Our analysis was also informative for studying nucleotide metabolism, and suggested compartmentalization of glutamate not evident from carbon isotopomers alone. Extending these studies to additional cell types, both normal and transformed, will be of importance for better understanding cellular metabolism.

Conclusions

Simultaneous tracing of carbon and nitrogen in mammalian cells is feasible with modern high-resolution mass spectrometers, and computational methods for steady-state metabolic flux analysis can be extended to handle the resulting data. Nitrogen isotopomers are informative for areas of amino acid and nucleotide metabolism that are rarely addressed using ¹³C tracers. Although further work is needed to fully understand the statistical properties of full-scan high resolution mass spectrometry data, multivariate mass isotopomers obtained from dual substrate labeling provides rich information that can help advance our understanding of systems metabolism.

Acknowledgements

This work was supported by grants from Vetenskapsrådet Medicine (B0305901), the Strategic Programme in Cancer Research at Karolinska Institutet, Stiftelsen för Strategisk Forskning (ICA10-0023) to RN; as well as grants from the National Institutes of Health (K08HL107451), Sidney Kimmel Foundation, and V Foundation to MJ.

References

1. Sauer, U. Metabolic networks in motion: ^{13}C -based flux analysis. *Mol. Syst. Biol.* **2**, 62 (2006).
2. Huang, X. *et al.* X13CMS: global tracking of isotopic labels in untargeted metabolomics. *Anal. Chem.* **86**, 1632–9 (2014).
3. Capellades, J. *et al.* GeoRge: A Computational Tool to Detect the Presence of Stable Isotope Labeling in LC/MS-Based Untargeted Metabolomics. *Anal. Chem.* **88**, 621–628 (2016).
4. Buescher, J. M. *et al.* A roadmap for interpreting ^{13}C metabolite labeling patterns from cells. *Curr. Opin. Biotechnol.* **34**, 189–201 (2015).
5. Wiechert, W. ^{13}C Metabolic Flux Analysis. *Metab. Eng.* **3**, 195–206 (2001).
6. Libourel, I. G. L. & Shachar-Hill, Y. Metabolic flux analysis in plants: from intelligent design to rational engineering. *Annu. Rev. Plant Biol.* **59**, 625–650 (2008).
7. Niklas, J., Schneider, K. & Heinzle, E. Metabolic flux analysis in eukaryotes. *Curr. Opin. Biotechnol.* **21**, 63–9 (2010).
8. Yoo, H., Antoniewicz, M. R., Stephanopoulos, G. & Kelleher, J. K. Quantifying reductive carboxylation flux of glutamine to lipid in a brown adipocyte cell line. *J. Biol. Chem.* **283**, 20621–7 (2008).
9. Metallo, C., Gameiro, P., Bell, E. & Mattaini, K. Reductive glutamine metabolism by IDH1 mediates lipogenesis under hypoxia. *Nature* **481**, 380–384 (2011).
10. Fan, J. *et al.* Quantitative flux analysis reveals folate-dependent NADPH production. *Nature* **510**, 298–302 (2014).
11. Munger, J. *et al.* Systems-level metabolic flux profiling identifies fatty acid synthesis as a target for antiviral therapy. *Nat. Biotechnol.* **26**, 1179–86 (2008).
12. Lewis, C. A. *et al.* Tracing Compartmentalized NADPH Metabolism in the Cytosol and Mitochondria of Mammalian Cells. *Mol. Cell* **55**, 253–263 (2014).
13. Krömer, J. O., Heinzle, E., Schroder, H. & Wittmann, C. Accumulation of homolanthionine and activation of a novel pathway for isoleucine biosynthesis in *Corynebacterium glutamicum* McbR deletion strains. *J. Bacteriol.* **188**, 609–618 (2006).
14. Antoniewicz, M. R., Kelleher, J. K. & Stephanopoulos, G. Elementary metabolite units (EMU): a novel framework for modeling isotopic distributions. *Metab. Eng.* **9**, 68–86 (2007).
15. Jain, M. *et al.* Metabolite Profiling Identifies a Key Role for Glycine in Rapid Cancer Cell Proliferation. *Science (80-.)*. **336**, 1040–1044 (2012).
16. Duarte, N. C. *et al.* Global reconstruction of the human metabolic network based on genomic and bibliomic data. *Proc. Natl. Acad. Sci. U. S. A.* **104**, 1777–82 (2007).
17. Arita, M. The metabolic world of *Escherichia coli* is not small. *Proc. Natl. Acad. Sci. U. S. A.* **101**, 1543–7 (2004).
18. Young, J. D., Walther, J. L., Antoniewicz, M. R., Yoo, H. & Stephanopoulos, G. An Elementary Metabolite Unit (EMU) Based Method of Isotopically Nonstationary Flux Analysis. *Biotechnol. Bioeng.* **99**, 686–699 (2008).
19. Suthers, P. F. *et al.* Metabolic flux elucidation for large-scale models using ^{13}C labeled isotopes. *Metab. Eng.* **9**, 387–405 (2007).
20. Möllney, M., Wiechert, W., Kownatzki, D. & de Graaf, a a. Bidirectional reaction steps in metabolic networks: IV. Optimal design of isotopomer labeling experiments. *Biotechnol.*

- Bioeng.* **66**, 86–103 (1999).
21. Eagle, B. Y. H. The Specific Amino Acid Requirements of a Human Carcinoma Cell (Strain HeLa) in Tissue Culture. *J. Exp. Med.* **102**, 37–48 (1955).
 22. Van Beers, E. H. *et al.* Intestinal carbamoyl phosphate synthase I in human and rat. Expression during development shows species differences and mosaic expression in duodenum of both species. *J. Histochem. Cytochem.* **46**, 231–240 (1998).
 23. Leighty, R. W. & Antoniewicz, M. R. Parallel labeling experiments with [U-13C]glucose validate E. coli metabolic network model for 13C metabolic flux analysis. *Metab. Eng.* **14**, 533–41 (2012).
 24. Wiechert, W., Möllney, M., Petersen, S. & de Graaf, a a. A universal framework for 13C metabolic flux analysis. *Metab. Eng.* **3**, 265–83 (2001).
 25. Greenhouse, W. V. V & Lehninger, A. L. Occurrence of the Malate-Aspartate Shuttle in Various Tumor Types. *Cancer Res.* **36**, 1392–1396 (1976).
 26. Leke, R. *et al.* Detoxification of ammonia in mouse cortical GABAergic cell cultures increases neuronal oxidative metabolism and reveals an emerging role for release of glucose-derived alanine. *Neurotox. Res.* **19**, 496–510 (2011).
 27. Hagedorn, C. H. & Phang, J. M. Transfer of Reducing Equivalents into Mitochondria by the Interconversions of Proline and Delta1-pyrroline-5-carboxylate. *Arch. Biochem. Biophys.* **225**, 95–101 (1983).
 28. Possemato, R. *et al.* Functional genomics reveal that the serine synthesis pathway is essential in breast cancer. *Nature* **476**, 346–350 (2011).
 29. DeNicola, G. M. *et al.* NRF2 regulates serine biosynthesis in non-small cell lung cancer. *Nat. Genet.* **47**, 1475–1481 (2015).
 30. Efeyan, A., Comb, W. C. & Sabatini, D. M. Nutrient-sensing mechanisms and pathways. *Nature* **517**, 302–310 (2015).

Figure legends

Figure 1

(A) Example ^{13}C and ^{15}N mass isotopomers intensity peaks in glutamine in a single scan of LC-MS profile mode data. (B) Mass isotopomers peaks of glutathione, as in A. (C) Region of profile mode LC-MS data showing chromatographic elution of glutathione mass isotopomer peaks, from the same sample as in B. (D) MMID of glutamine depicted as an array plot. (E) MMID of glutamine. Error bars denote absolute standard deviation of triplicates. MI, mass isotopomer. (F) Histogram (gray bars) and cumulative density (solid line) of MMID standard deviations across all measured metabolites. Undetectable mass isotopomers (zero in all samples) were excluded. Rightmost histogram bin represents all MI with standard deviation > 0.03 .

Figure 2

(A) Model fit to measured MMIDs after 24h culture in labeled medium. Results for one sample is shown; all replicates were similar. (B) Total variance-weighted squared error per metabolite for each of 3 replicates, joined by solid lines. Difficult to fit metabolites are indicated: glucys, gamma-glutamylcysteine; adp, adenosine diphosphate; udpg, uracil diphosphate-glucose.

Figure 3

(A) Measured, fitted mitochondrial and fitted cytosolic carbon-nitrogen MMIDs of glutamate after 24h culture in labeled medium. Complete MMIDs are shown as array plots, selected isotopomers as bar charts. (B) Model of glutamate metabolism (simplified) with fitted MMIDs. Mitochondrial glutamate (upper) reflects synthesis from glutamine, while cytosolic glutamate (lower) is affected by aminotransferase activity, resulting in a smaller fraction $^{13}\text{C}_5^{15}\text{N}_1$. (C) Measured and fitted carbon-nitrogen MMIDs of proline, as in A.

Figure 4

(A) Measured and fitted carbon-nitrogen MMIDs of adenosine diphosphate (ADP) after 24h culture in labeled medium. Complete MMIDs are shown as array plots, selected isotopomers as bar charts. (B) Schematic of purine synthesis with fitted MMIDs. Percentages indicate relative contribution of pathways according to model estimates. (C) Measured and fitted carbon-nitrogen MMIDs of uracil diphosphate-glucose (UDP-glucose) after 24h culture in labeled medium. (D) Schematic of pyrimidine synthesis, as in B.

Figure 1

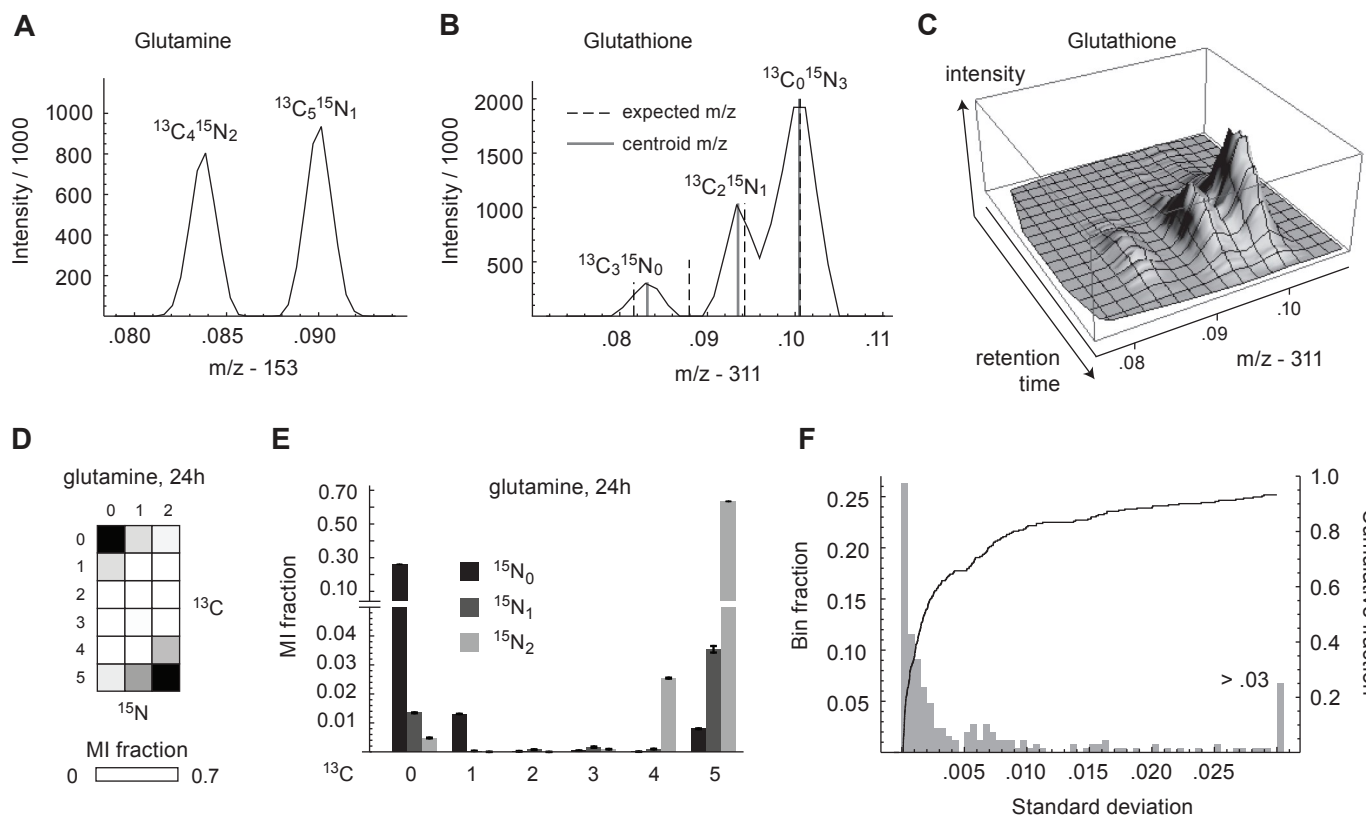


Figure 2

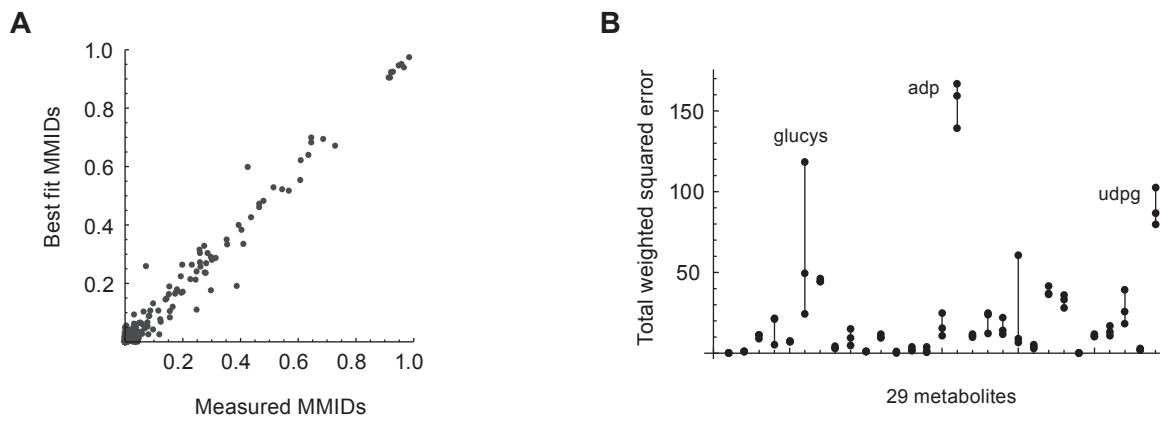


Figure 3

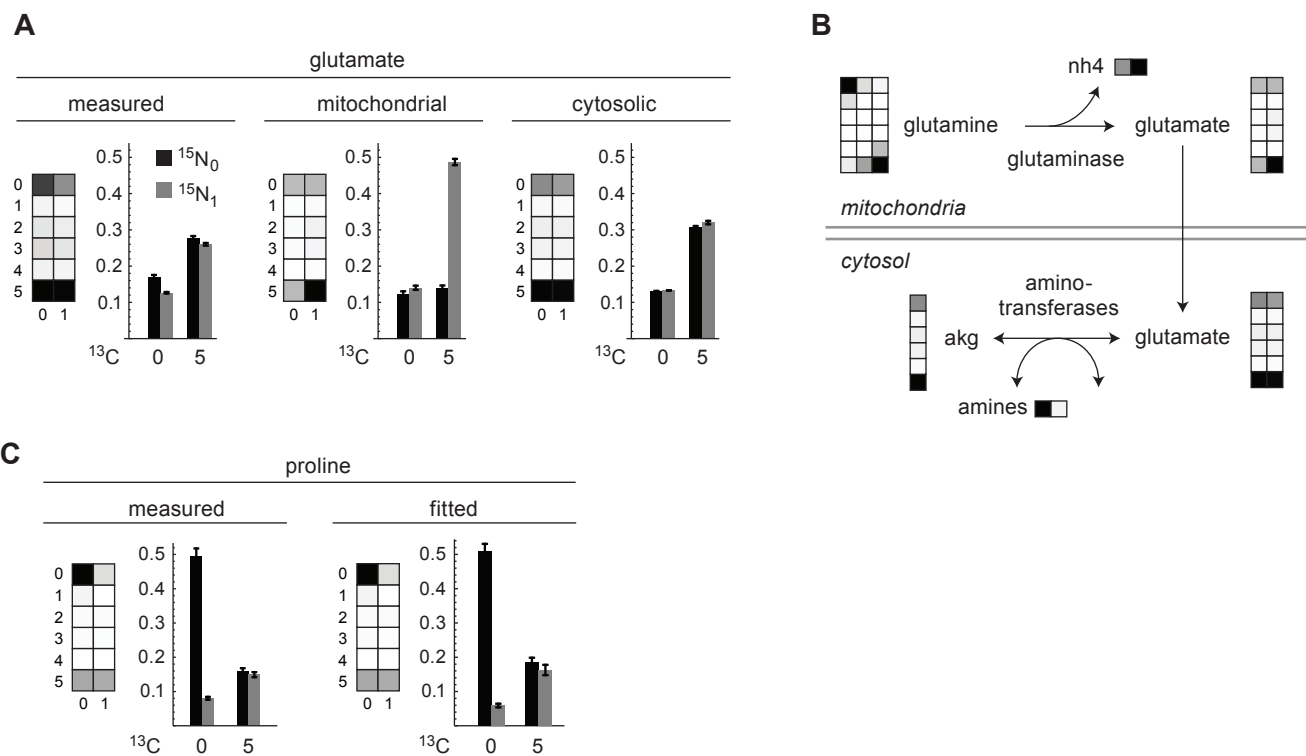


Figure 4

