

# RSC Advances



This is an *Accepted Manuscript*, which has been through the Royal Society of Chemistry peer review process and has been accepted for publication.

*Accepted Manuscripts* are published online shortly after acceptance, before technical editing, formatting and proof reading. Using this free service, authors can make their results available to the community, in citable form, before we publish the edited article. This *Accepted Manuscript* will be replaced by the edited, formatted and paginated article as soon as this is available.

You can find more information about *Accepted Manuscripts* in the [Information for Authors](#).

Please note that technical editing may introduce minor changes to the text and/or graphics, which may alter content. The journal's standard [Terms & Conditions](#) and the [Ethical guidelines](#) still apply. In no event shall the Royal Society of Chemistry be held responsible for any errors or omissions in this *Accepted Manuscript* or any consequences arising from the use of any information it contains.



Journal Name

ARTICLE

## Nafion-stabilised bimetallic Pt-Cr nanoparticles as electrocatalysts for proton exchange membrane fuel cells (PEMFCs)

<sup>1</sup> Received 00th January 20xx,  
Accepted 00th January 20xx

G. Gupta<sup>a</sup>, S. Sharma<sup>a</sup> and P.M. Mendes<sup>a,\*</sup>

DOI: 10.1039/x0xx00000x

www.rsc.org/

The current study investigated the unique combination of alloying (Pt with Cr) and Nafion stabilisation to reap the benefits of catalyst systems with enhanced catalytic activity and improved durability in PEMFCs. Pt-Cr alloy nanoparticles stabilised with Nafion were chosen in the current study owing to their higher stability in acidic and oxidising media at high temperatures compared to other Pt-transition metal alloys (e.g. Pt-Ni, Pt-Co). Two different precursor:reducing agent (1:10 and 1:20) ratios were used in order to prepare two different alloys, denoted as Pt-Cr 10 and Pt-Cr 20. The Pt-Cr 20 alloy system (with composition Pt<sub>80</sub>Cr<sub>20</sub>) demonstrated higher electrocatalytic activity for oxygen reduction reaction compared to commercial Pt/C (TKK) catalysts. Accelerated stress tests and single cell tests revealed that Nafion stabilised alloy catalyst systems displayed significantly enhanced durability (only ~20% loss of ECSA) compared with Pt/C (50% loss of ECSA) due to improved catalyst-ionomer interaction. Furthermore, the Pt-Cr 20 alloy system demonstrated a current density comparable to that of Pt/C making them promising potential electrocatalysts for proton exchange membrane fuel cells.

### Introduction

In the last two to three decades, fuel cells have attracted a lot of attention in the search for alternative and green energy sources owing to their high efficiencies and low emissions. Proton exchange membrane fuel cells (PEMFCs) are promising candidates among the various next generation power sources for application in transportation, stationary and portable devices due to advantages like low operating temperature, quick start-up time, high current density and easy scale-up. However, large scale commercialisation of these systems is still hindered due to various problems related to expensive components, poor cathodic reaction kinetics and corrosion and/or aggregation of the catalyst<sup>1-3</sup>. Pt-based electrocatalysts, commonly used in the PEMFC electrodes, are the main contributor to the high cost. High Pt loading, especially on the cathode side, to boost the sluggish oxygen reduction reaction (ORR)<sup>1, 2</sup> significantly adds to the system costs. The commercial catalyst is normally supported on high surface area carbon black. However, the porous structure of carbon black often makes many active catalytic sites inaccessible for the ORR leading to inefficient catalyst utilisation. Consequently, a significant amount of research focussing on decreasing the electrocatalyst loading while increasing the PEMFC efficiency has been carried out over the last decade by utilising various approaches, including i) use of Pt group alloys to reduce Pt dependency, ii) use of different

carbon and non-carbon nanostructured supports to increase catalyst-support interaction, iii) identifying the effect of particle shape and size on catalyst efficiency<sup>1-8</sup>. However, more research is still required to achieve low cost, high-efficiency Pt catalyst systems for PEMFCs. Another approach, which has recently generated interest, is to improve the catalyst-ionomer interaction by impregnating proton-conducting polymers like Nafion into the electrocatalyst layer<sup>9-12</sup>. This enhances the triple phase boundary between the ionomer, carbon support and the active catalytic sites resulting in improved ORR and hydrogen oxidation reaction (HOR) activity at the cathode and anode, respectively.

Various recent studies have reported the use of Pt and Pt based alloys dispersed in a polymer matrix for achieving enhanced catalytic properties<sup>9-12</sup>. Liu *et al.*<sup>12</sup> synthesised Nafion stabilised Pt nanoparticles using alcohol reduction to realise higher oxygen reduction reaction activity compared to unsupported Pt black and commercial Pt/C catalyst. Sarma *et al.*<sup>9</sup> synthesised Nafion-stabilised PtRu/C catalysts for methanol oxidation reaction, which showed higher catalytic activity than a commercial E-TEK PtRu/C catalyst. Curnick *et al.*<sup>10, 11</sup> prepared Nafion stabilised Pt nanoparticles using the borohydride reduction method and showed improved degradation behaviour as well as better utilisation when compared to the E-TEK catalyst. However, there have been limited studies investigating Pt-Cr alloys and their possible use as fuel cell catalysts. The main advantage offered by Pt-Cr alloy is its stability in acidic and oxidizing media at high temperature. Moreover, Cr sits at the top of the volcano plot along with other transition metals (Ni, Co, Cu) suggesting significant potential to provide superior ORR activity<sup>13-15</sup>. Yang

<sup>a</sup> School of Chemical Engineering, University of Birmingham, Edgbaston, Birmingham, B15 2TT, United Kingdom. E-mail: p.m.mendes@bham.ac.uk

<sup>b</sup> Electronic Supplementary Information (ESI) available: EDX and XPS data. See DOI: 10.1039/x0xx00000x

*et al.*<sup>14</sup> studied the ORR kinetics of Pt-Cr alloy catalysts supported on Vulcan XC-72 and reported a significantly enhanced specific activity (a factor of ~ 1.5-3) when compared to that of Pt/C. Antolini *et al.*<sup>15</sup> studied the electrocatalytic activities of different alloys of Pt-Cr for ORR in 1 M H<sub>2</sub>SO<sub>4</sub> and 1 M H<sub>2</sub>SO<sub>4</sub>/1–3 M CH<sub>3</sub>OH solution using rotating disc electrode and reported improved activity as compared to Pt/C.

Herein, we report a novel approach, which combines the benefits of Nafion stabilisation with the useful effects of Pt-Cr alloy formation for application in PEMFC cathode. Nafion stabilised Pt-Cr alloy nanoparticles systems with two different alloying ratios were synthesised using wet chemical synthesis by borohydride reduction method. This unprecedented combination is expected to allow better catalyst-ionomer interaction, enable higher catalyst utilisation and enhance electrocatalytic activity and durability. We have based our studies on two different types of Nafion-stabilised Pt-Cr alloy nanoparticles in order to establish whether Nafion stabilised Pt-Cr alloy nanoparticles could provide superior catalytic activity and durability and if these properties could be dependent on the Pt:Cr ratio and Nafion content.

## Experimental

### Preparation of Nafion stabilised Pt-Cr nanoparticles

H<sub>2</sub>PtCl<sub>6</sub> and CrCl<sub>3</sub>, as Pt and Cr precursors, respectively, were dissolved in ethanol in the molar ratio of 1:1 by continuous stirring at 500 rpm for 10 min. 10 wt.% Nafion solution was added to the above mixture to attain a metal:Nafion ratio of 1:30. This mixture was stirred for another 30 mins at 500 rpm to allow complete dispersion of Nafion in the ethanol solution. A freshly prepared solution of NaBH<sub>4</sub> was then added to the above mixture which resulted in an instant colour change (from green to black). This confirmed that the metal precursors have been reduced. The product thus obtained was centrifuged (Sigma 3K 30, 4 °C, 2000 rpm) using acetone as the precipitation solvent to remove the excess Nafion. Following this, the product was re-dispersed using ultrasonication in a mixture of 1:4 v/v solution of acetone:water before centrifuging again. This process was repeated 3 times. The above procedure was used for the preparation of two alloys with different metal:reducing agent ratios (1:10 and 1:20) to allow variable degrees of reduction of the metal precursors. The alloys thus formed were labelled as Pt-Cr 10 and Pt-Cr 20, respectively. In the present work, the key parameter governing the alloying ratio is variation of the metal:reducing agent ratio. It is noteworthy that alloying ratio may also be controlled by varying Pt:Cr precursor ratio, though it was kept constant in the current study. The synthesis was repeated 4 times and samples from different batches were characterized using the below methods to confirm the repeatability of the process. Commercial Pt/C from TKK was used for comparison studies in fuel cell testing experiments.

### Material Characterisation

The alloys formed were characterised using thermogravimetric analysis (TGA), transmission electron microscopy coupled with

energy dispersive spectroscopy (TEM-EDX), X-ray diffraction (XRD) and X-ray photoelectron spectroscopy (XPS) to study the metal and Nafion content, particle size and distribution of the nanoparticles, the composition of the alloys and oxidation states of the various elements present.

### Transmission Electron Microscopy

The nanoparticles were deposited on Cu grids with carbon film on one side and examined using an FEI Tecnai TF20 coupled with Oxford Instruments INCA 350 energy dispersive X-ray spectroscopy (EDX) system operated at an accelerating voltage of 200 kV. Bright field images were taken at low and high resolution to analyse the size, size distribution and the structure of the nanoparticles. EDX was performed on the individual nanoparticles as well as over different areas to study the composition of the particles. The particle size was determined by analysing the high resolution images using ImageJ.

### X-ray Diffraction (XRD)

Laboratory-source XRD (INEL XRD Equinox 3000 diffractometer) fitted with Cu K $\alpha$  source, operating at 40 kV and 40 mA, was used to characterise the structure of the metal nanoparticles. The Pt-Cr nanoparticles were dried on a As-doped Si substrate for XRD measurement. The diffraction pattern was analysed using Match software. Instrumental broadening was determined using Si standard samples and particle size was estimated using the observed line broadening and Scherer equation at different planes of reflection.

### X-ray Photoelectron Spectroscopy (XPS)

XPS spectra were obtained on the AXIS Nova (Kratos Analytical) instrument based at University of Newcastle (NEXUS), UK. XPS experiments were carried out using a monochromatic Al K $\alpha$  X-ray source (1486.7 eV) at a take-off angle of 90 degree to the surface plane. High-resolution scans of Pt 4f, C 1s, O 1s and Cr 2p were recorded using pass energy of 20 eV at a step size of 0.1 eV. Fitting of XPS peaks was performed using CASA XPS processing software. Sensitivity factors used in this study were: C 1s 1.00; O 1s 2.8; Pt 4f 7/2 8.65; Pt 4f 5/2 6.8; Cr 2p 3/2 7.69; Cr 2p 1/2 3.98.

### Thermogravimetric Analysis (TGA)

Netsch TG was used to study the amount of Nafion and metal (Pt/Cr) present in the samples. The samples were heated from room temperature to 800 °C at a heating rate of 10 °C/min. The temperature of 800 °C was chosen to make sure the residual mass consists of Pt/Cr only while Nafion is completely burnt off so that no other impurities are present in the residue. TGA was also done for pure Nafion in order to compare it with the as synthesised alloy systems.

### Catalyst-ink preparation

The catalyst ink was prepared by supporting Pt-Cr nanoparticles on Vulcan XC-72 in the ratio of 1:1 in order to

achieve the composition of 50 wt.% Pt-Cr on Vulcan carbon in all cases. It was prepared in a solution of water and isopropanol (3:1). The ink was sonicated for 30 min to allow the mixing and homogenization of the catalyst nanoparticles with the carbon support.

### Ex-situ electrochemical testing

The working electrode was prepared using a glassy carbon electrode (GCE) that was polished using alumina slurry successively with decreasing particle sizes of 1, 0.3 and 0.05 microns. 10  $\mu\text{l}$  of the catalyst ink was then drop cast on the polished surface and completely dried in a vacuum oven at 40  $^{\circ}\text{C}$  for 12 hours. All the electrochemical testing was done at 25  $^{\circ}\text{C}$  in a 3 electrode cell, using an Autolab PGSTAT302N potentiostat (Metrohm) and a Pine rotating disc electrode (RDE) setup. The electrolyte in all cases was 0.1 M  $\text{HClO}_4$  solution prepared from 70% perchloric acid (Sigma-Aldrich). All the potentials were recorded with respect to normal hydrogen electrode (NHE) and Pt mesh was used as a counter electrode in all ex-situ electrochemical measurements. Metal loadings of 20  $\mu\text{g}/\text{cm}^2$  were used for all the CV and ORR experiments. All the tests were repeated at least 3 times to confirm the repeatability and homogeneity of the catalyst ink.

### Cyclic Voltammetry (CV)

The  $\text{HClO}_4$  solution was purged with  $\text{N}_2$  gas for 20 mins in order to saturate the solution with an inert gas before performing any measurements. CV scans were performed at 250 mV/s in a potential window from 0.05 V to 1.1 V to remove any contaminants that may be present on the surface of the catalyst. Steady state cyclic voltammograms were then recorded at a scan rate of 25 mV/s in the same potential range. Electrochemical surface area (ECSA) ( $\text{m}^2/\text{g}_{\text{Pt}}$ ) was then measured by integrating the hydrogen underpotential deposition (Hupd) region (0.05-0.4 V) from a CV obtained at scan rate of 25 mV/s using equation 1.

$$\text{ECSA} = \frac{Q_{\text{Hdes}} * 100}{210 * L_{\text{Pt}} * A} \quad (1)$$

where  $Q_{\text{Hdes}}$  ( $\mu\text{C}$ ) is the charge measured upon desorption of a monolayer of underpotentially-deposited (UPD) hydrogen,  $L_{\text{Pt}}$  is the Pt loading ( $\mu\text{g}/\text{cm}^2$ ),  $A$  is the geometric area of the GCE ( $\text{cm}^2$ ) and the value of 210  $\mu\text{C}/\text{cm}^2$  corresponds to the charge passed during Hupd on a bulk polycrystalline Pt surface.

### RDE Measurements of ORR Activity

After the CV scans, the polarization curves were recorded between 0.05 to 1.2 V (vs RHE) at a scan rate of 25 mV/s at room temperature. The sweeps were recorded at rotating speeds of 400, 800, 1200, 1600 and 2000 rpm. The solution was then purged with pure oxygen ( $\text{O}_2$ ) for 30 mins to ensure that the solution was saturated and the same sweeps were recorded in  $\text{O}_2$ .

### Accelerated Stress Testing

Accelerated stress testing (AST) was used to study the degradation behaviour of the standard catalyst as well as the PtCr/C catalyst. The procedure involved recording the ECSA by cyclic voltammetry at 25 mV/s using the  $\text{H}_{\text{upd}}$  method before and after the potential cycling. Cycling consisted of square wave potential cycle from +0.6 V to 1.0 V holding for 1s at each potential (S4). These potentials were chosen in order to reproduce the open circuit and peak power output condition in the PEMFCs. The square wave potential step was chosen over linear potential sweep as this produced highest degradation loss due to Pt dissolution which shortens the test duration<sup>16</sup>. This is also the most widely used test for the degradation study. The ECSA was measured after every 1,200 cycles up to 4,800 cycles. The 4800 cycles were selected for these ex-situ studies since it provides<sup>17-24</sup> information on the durability of the catalyst and whether there is the potential for the catalyst to be further developed.

### PEMFC single-cell testing

The single cell fuel cell testing was done using a Paxitech FCT-50S PEMFC test stand from Biologic. Membrane Electrode Assembly (MEA) consisted of a cathode gas diffusion layer, cathode catalyst, membrane, anode catalyst and anode gas diffusion layer. MEAs of size 4 cm x 4 cm were used for all the materials with a Nafion membrane of 5 cm x 5 cm. For the preparation of anodes, 1 wt.% Nafion dispersion in iso-propyl alcohol (IPA) was painted on the catalyst side of commercial gas diffusion electrodes (Johnson Matthey, 0.4  $\text{mg}_{\text{Pt}}/\text{cm}^2$  on SGL 34BC) followed by drying in a vacuum oven at 40  $^{\circ}\text{C}$ . Cathodes were prepared by hand painting the as-prepared Pt-Cr/C or commercial Pt/C (TKK) catalyst on the gas diffusion layer (Freudenberg C2) and drying under a UV lamp. The electrodes were left for drying in vacuum oven overnight at 40  $^{\circ}\text{C}$  and the catalyst loading was determined by measuring the weight change in the electrodes before painting and after painting and drying. Nafion 212 was used as the membranes between anode and cathode. The prepared anode and cathode GDLs and Nafion 212 membrane was then hot pressed (120  $^{\circ}\text{C}$ , 180 kPa, 120 s) to make the MEAs. The MEA was placed between two gaskets on either side and compressed between the graphite flow field plates with single cell serpentine channel geometry. Gold plated copper plates were used as current collectors and aluminium end plates were used to control the heating of the anode and cathode.

## Results and Discussion

Pt-Cr alloy nanoparticles stabilised with Nafion were synthesised using borohydride reduction method with different precursor: reducing agent (1:10 and 1:20) ratios and were denoted as Pt-Cr 10 and Pt-Cr 20. Figure 1 shows the bright-field TEM images of the commercial Pt/C (a, b), Pt-Cr 10 (c, d) and Pt-Cr 20 (e, f) samples. Nanoparticles with variable size distribution (as shown in the insets) from 4 to 10 nm were observed with a large fraction of particles around  $6 \pm 2$  nm, indicating good size control can be achieved using the

borohydride reduction process. A common feature observed in the images for both Pt-Cr samples, was the agglomeration of nanoparticles. Such agglomeration of nanoparticles has been reported in literature for Nafion stabilised samples<sup>9, 10, 25</sup> as Nafion acts as a binder. Commercial Pt/C sample showed a uniform distribution of nanoparticles with average particle size of  $4 \pm 1$  nm. Energy dispersive X-ray spectroscopy (EDX) was carried out on all the samples using area as well as particle scan for compositional analysis. The EDX graphs (Figure S1) revealed presence of 30 and 20 at.% Cr in Pt-Cr 10 and Pt-Cr 20, respectively. A higher amount of Cr in Pt-Cr 10 than in Pt-Cr 20 samples was not completely unexpected as this is attributed to the relatively faster reduction of Cr precursor

compared to Pt precursor leading to more Cr reduction by the time solid solution/alloying of Pt-Cr takes place. Similar observations have been reported for PtNiCr and PtRu alloys<sup>26, 27</sup>.

Figure 2a shows the TGA graphs for the two Pt alloys and pure Nafion. The decomposition of pure Nafion was found to occur between 75–550 °C. A small weight loss was observed in the temperature range of 75–300 °C which corresponds to the loss of residual water in the Nafion. A second more prominent weight loss was observed between 300 and 420 °C, which corresponds to the loss of sulphur dioxide from the Nafion.

The final curve in the temperature range 420 – 550 °C showed a drastic mass loss which corresponds to the complete decomposition of the Nafion polymer chain. These observations were in agreement with previous literature reports<sup>28, 29</sup>. Both Pt-Cr samples revealed a similar TGA profile showing the decomposition of Nafion from 75–500 °C with a steep change in mass after 450 °C. The amount of Nafion present in the samples was calculated using the weight loss between the two dotted lines (a and b) shown in the Figure 2a. These calculations revealed that there is more Nafion in Pt-Cr 20 than in Pt-Cr 10. The residual weight at 800 °C was used to determine the amount of metal present in the samples. The metal loading was found to be 55 wt.% and 43 wt.% for Pt-Cr 10 and Pt-Cr 20, respectively. The TGA studies were repeated a minimum of three times for all samples and the error in the residual weight was found to be  $\pm 1$ wt.%.

Figure 2b shows the X-ray diffraction graphs obtained for the three different catalysts. All samples revealed peaks at  $2\theta$  values of 39.8, 46.2, 67.6 and 81.5 which correspond to Pt (111), (200), (220) and (311), respectively. The dotted lines in the figures correspond to the peaks for Cr i.e. a(110), b(200), and c(211). Pt-Cr 20 showed more broadening of the Pt peaks compared to Pt-Cr 10 samples suggesting alloying of Pt and Cr. In most reported literature, alloying is identified either using peak shift and/or peak broadening as observed in the XRD analysis<sup>26, 27, 30, 31</sup>. As reported for Pt-Ru system by Hyun *et al.*<sup>27</sup> with the increase in the content of Ru, the Pt peak height decreases and broadening of the peaks occurs due to alloying. They also reported that degree of alloying increased with the increase in amount of reducing agent. Jeon *et al.*<sup>26</sup> reported peak broadening and height reduction for Pt in PtNiCr system with the increase in the concentration of reducing agent. The peak broadening was also attributed to the formation of alloys of PtNiCr. In the present study, the particle size is similar for

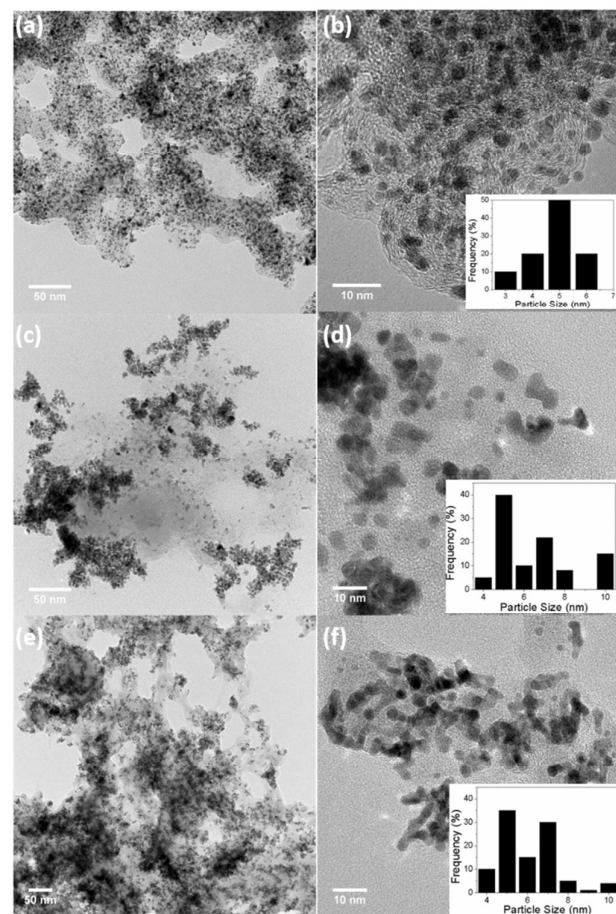


Figure 1: Bright field TEM images of (a, b) commercial Pt/C, (c, d) Pt-Cr 10 and (e, f) Pt-Cr 20 with particle size distribution shown in insets.

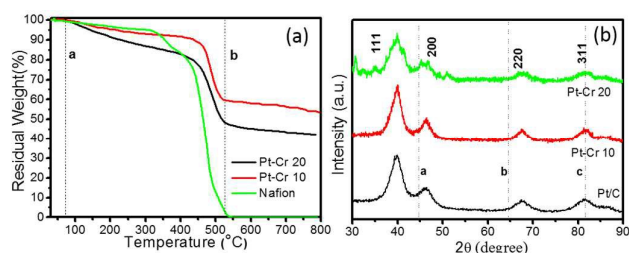


Figure 2: (a) TGA graph of Pt-Cr 10, Pt-Cr 20 and pure Nafion, (b) XRD graph of Pt/C, Pt-Cr 10 and Pt-Cr 20 (lines a, b and c are the peak positions for Cr)

Table: 1 Parameter calculated from XRD and TEM analysis

Sample	Average Particle Size (TEM) nm	Particle Size (XRD) nm	Lattice Parameters (TEM) Å	Lattice Parameters (XRD) Å
Pt/C	$4 \pm 1$	6	3.92	3.92
Pt-Cr 10	$6 \pm 2$	9	3.89	3.90
Pt-Cr 20	$6 \pm 2$	8	3.85	3.89

the all the catalysts (ranging between 4-10 nm), thus the broadening of the peaks for Pt-Cr catalyst can be attributed to the formation of alloys. The lattice parameters for all samples as calculated from the XRD and TEM studies are compiled in Table 1. A small difference in the lattice parameter values can be due to different instruments and the accuracy of the measurement. The particle size calculated from the curves using the Scherer equation which takes into account the full width at half maximum (FWHM) for these catalysts is also shown in Table 1. The particle size varied from 4-10 nm for all the catalysts and is in agreement with the particle size calculated from the TEM analysis.

XPS analysis was also carried out for the two Pt-Cr samples in order to identify the Pt:Cr ratio and oxidation states of the two metals. The survey spectrum for Pt-Cr 10 and Pt-Cr 20 (Figure S2) revealed peaks corresponding to Pt and Cr along with C, F, and O (due to the presence of Nafion). Minor impurity (1-5 at. %) of Na was also identified in both samples (Table S1). This however, is not expected to interfere with the performance of the alloy catalyst. The oxidation states of Pt and Cr elements were identified by peak fitting of the high-resolution elemental spectrum to obtain the component peaks. The ratio of Pt:Cr were also calculated for both the samples and were in agreement with the TEM-EDX results i.e. 30 at.% Cr and 20 at.% Cr in Pt-Cr 10 and Pt-Cr 20, respectively (Table S1).

Figure 3 shows the high-resolution XPS spectra of C 1s, O 1s, Cr 2p and Pt 4f for Pt-Cr 10 samples along with the respective fitted peak components. All the peaks were normalised by shifting of the C-C peak to 285 eV. The different components in the C 1s spectrum (Figure 3a) compare well with previous literature reports<sup>32,33</sup> investigating the structure of the Nafion, which contains the CF<sub>2</sub>, CF<sub>3</sub>, CF, C-O and C-S bonds. Comparing the C1s spectra of Pt-Cr 10 and pure Nafion (Figure S3) it can be seen that the component at 285 eV is absent in pure Nafion. The occurrence of C 1s component

around 285 eV is attributed to the presence of adventitious carbon impurities during the synthesis procedure. However, there is a change in the ratio of CF components especially noticed in the decrease of CF<sub>2</sub> component, which forms the backbone of Nafion structure. This suggests possible disintegration of the Nafion. The O 1s spectrum (Figure 3b) of Pt-Cr 10 shows the presence of three different components at 529.9 eV, 532.6 eV and 535.1 eV, which correspond to the presence of metal oxide, sulfonate and ether groups, respectively<sup>32-34</sup>. The presence of metal oxide can be confidently attributed to oxides of Cr which is further verified by the presence of Cr<sup>3+</sup> components in Cr spectra (Figure 3c)<sup>35</sup>. Note that no detection of Cr (VI) was observed that could potentially have a negative environmental impact. The partial disintegration of Nafion is confirmed from the change in the peak intensity of the sulfonate and ether groups. The peak intensity of the sulfonate group has increased significantly compared to pure Nafion and this can be due to the breakage of side chains of Nafion causing increase in the concentration of the sulfonate groups. Figure 3c reveals the presence of two different components which were identified as Cr<sup>0</sup> and Cr<sup>3+</sup><sup>35,36</sup>. Based on the deconvoluted components, it was determined that almost 40% of the Cr was oxidised during the synthesis. The oxidation of metal was unavoidable as the synthesis was carried out in ambient conditions without the use of any protective environment. However, this oxidation of Cr prevents the oxidation of Pt in this system. Figure 3d shows the Pt 4f spectrum. The lower binding energy doublet with Pt 4f<sub>7/2</sub> 71.2 eV agrees well with the published values of Pt metal<sup>35,37-42</sup>. Further deconvolution of the spectrum confirmed presence of only one component pair corresponding to pure Pt and confirmed that Pt was not present in any other oxidation state. As suggested earlier, the absence of Pt oxides is attributed to the presence of Cr in the system, which has the tendency to oxidise more quickly, thus preventing the oxidation of Pt and in turn facilitating enhanced catalytic activity.

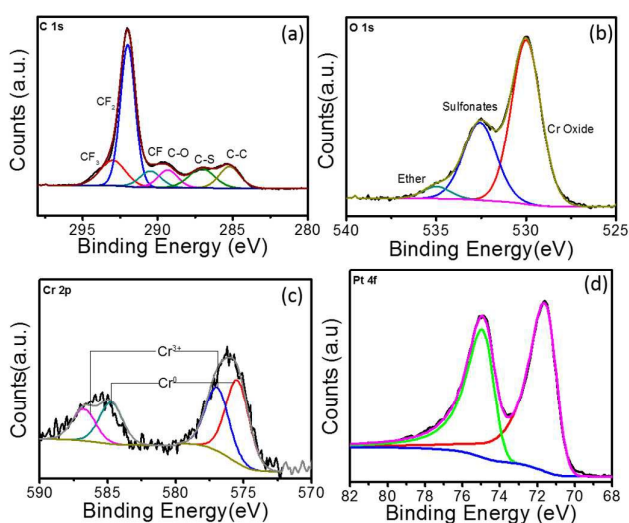


Figure 3: XPS spectra for Pt-Cr 10 showing high resolution elemental spectra of (a) C 1s, (b) O 1s, (c) Cr 2p and Pt 4f.

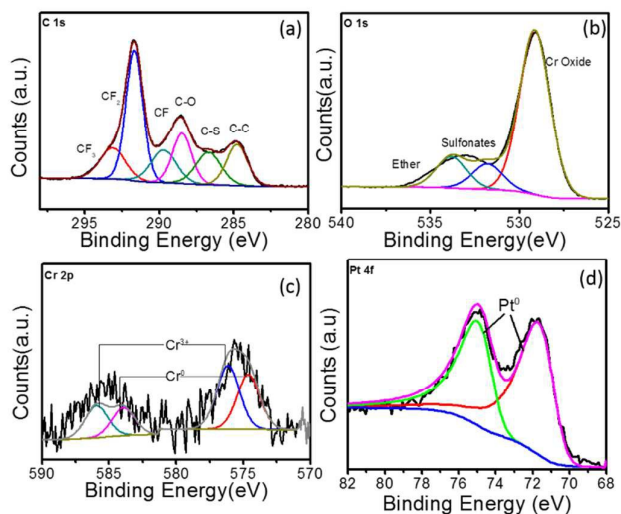


Figure 4: XPS spectra for Pt-Cr 20 showing high resolution elemental spectra of (a) C 1s, (b) O 1s, (c) Cr 2p and Pt 4f.

The C 1s, O 1s, Cr 2p and Pt 4f high resolution XPS spectra for Pt-Cr 20 is shown in Figure 4. The C 1s spectrum for this sample also showed the same components (i.e. CF<sub>2</sub>, CF<sub>3</sub>, CF, C-O and C-S bonds) as seen for Pt-Cr 10 (Figure 3a), which confirmed the presence of Nafion. As mentioned earlier, C-C bond is present due to the adventitious carbon impurities during the synthesis. The concentration of CF groups is again changed and the intensity of CF<sub>2</sub> peak has decreased suggesting some disintegration of Nafion. The O 1s spectrum (Figure 4b) shows an increased intensity of the ether component, suggesting the breakage of side chains of Nafion containing ether group along with sulfonate groups in Pt-Cr 20. The O 1s spectra also revealed a metal oxide component peak (Figure 4c) similar to the Pt-Cr 10 sample. Interestingly, the oxide content in this case appears to have increased to 54% as compared to 43% in Pt-Cr 10 even though the amount of Cr was less in Pt Cr 20. This could be due to the higher metal:reducing agent ratio used in this sample preparation which could lead to increase in Cr oxide formation. Similar to Pt-Cr 10, no oxidation of Pt was observed from the Pt 4f spectra for Pt-Cr 20.

Based on the various characterisation techniques (TGA, TEM, XRD and XPS) discussed above, it was estimated that the two systems synthesised in the current study i.e. Pt-Cr 10 and Pt-Cr 20 have 55 wt.% and 43 wt. % of metal, respectively. The amount of Cr present in the two systems, as estimated from XPS and EDX data is 30 at.% and 20 at.% for Pt-Cr 10 and Pt-Cr 20, respectively. The calculation for the amount of Pt and Cr present in both samples is given in the SI. This data was used as a baseline for carrying out the electrochemical experiments, which are discussed further in this study.

Figure 5a shows the cyclic voltammograms of Pt/C, Pt-Cr 10/C and Pt-Cr 20/C in N<sub>2</sub> saturated 0.1 M HClO<sub>4</sub> solution at 25 °C. The values for the electrochemical surface area (ECSA) were calculated using Equation 1, which takes into consideration the area under the hydrogen desorption peak.

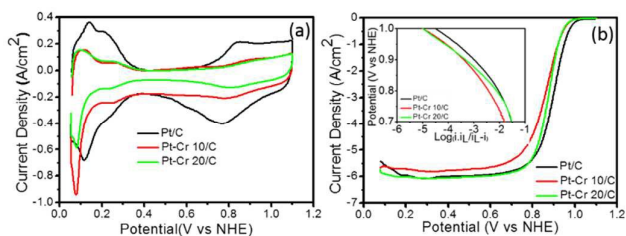


Figure 5: (a) Cyclic Voltammetry and (b) Linear Sweep Voltammetry (Inset: Tafel plot) at 1600 rpm for Pt/C, Pt-Cr 10/C and Pt-Cr 20/C in 0.1 M HClO<sub>4</sub> solution at 25 °C. The current density is normalised to Pt loadings estimated from the TGA, EDX and XPS analysis.

Table 2: Parameters calculated from electrochemical characterisation

	Pt/C	Pt-Cr 10/C	Pt-Cr 20/C
ECSA (m <sup>2</sup> /gPt)	61	27	19
Tafel Slope (mV/decade)	75	73	62
Specific Activity at 0.9 V (mA/cm <sup>2</sup> <sub>Pt</sub> )	0.45	0.42	0.69
Mass Activity at 0.9 V (mA/mg <sub>Pt</sub> )	260	118	130

The ECSA, specific and mass activity and Tafel slope values obtained for all the catalysts are reported in the Table 2. A lower ECSA value was observed for Pt-Cr samples as compared to Pt/C which can be attributed to loss of activity due to agglomeration and presence of larger particles in the Pt-Cr samples. The lower ECSA for Pt-Cr 20 compared to Pt-Cr 10 may be ascribed to the presence of higher amount of Nafion in the sample, which can shield the metal nanoparticles.

Figure 5b shows the linear sweep voltammograms of the three catalyst-support systems (Pt/C, Pt-Cr 10/C and Pt-Cr 20/C) recorded at a rotation speed of 1600 rpm. The Linear Sweep Voltammetry graph was used to calculate the mass normalised Tafel plots for both the Pt-Cr catalyst systems in comparison with the commercial Pt/C catalyst system (inset Figure 5b). Specific and mass activity for all the three catalyst systems was calculated at 0.9 V. Pt-Cr 20/C alloy showed higher specific activity in comparison to Pt/C catalyst. However, there was no improvement in mass activity. The specific activity enhancement can be attributed to two factors, 1) improved triple phase boundaries due to Nafion stabilisation and 2) formation of Pt-Cr alloys<sup>10, 12</sup>. The Nafion stabilization of the Pt-Cr nanoparticles occurs by the combination of steric and electrostatic mechanisms. When carbon support is added, it results in a very effective distribution of Pt-Cr nanoparticles that have good contact with the proton conducting network i.e. improved triple phase boundary. There is also the possibility that Nafion swelling<sup>43-45</sup> can contribute to the fast diffusion of protons, thus resulting in enhanced nanoparticle performance.

All three catalyst systems were subjected to degradation studies using cyclic voltammetry. CVs were recorded after every 1200 cycles to calculate the amount of degradation for each catalyst (Figure 6a-c), which in turn provided the reduction in the ECSA. The ECSA values obtained for each catalyst over the 4800 cycles are plotted in Figure 6d. A significant loss of performance was observed for the commercial Pt/C catalyst after 1200 (25%) and 2400 (40%)

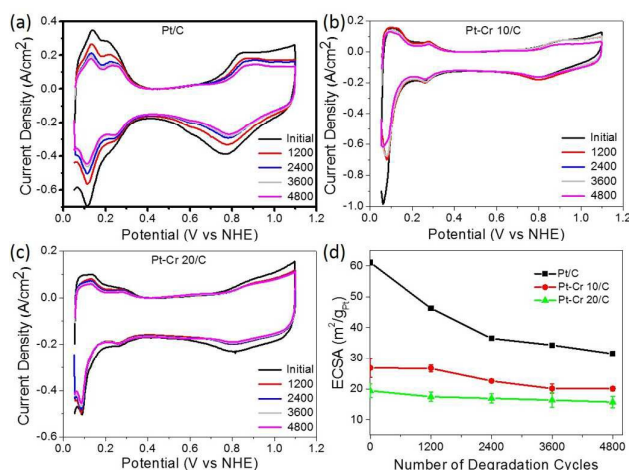


Figure 6: Cyclic voltammograms with different cycles for (a) Pt/C, (b) Pt-Cr 10/C and (c) Pt-Cr 20/C and (d) comparison of loss of electrochemical surface area for all the samples with potential cycling. All samples were tested a minimum of 3 times and standard deviation is shown in Figure 6(d).

compared to only around 15% and 13% after 2400 cycles for Pt-Cr 10 and Pt-Cr 20, respectively. The degradation rate of Pt-Cr 10 is almost negligible during the initial 1200 cycles and becomes constant only after 3600 cycles. The degradation trend for Pt-Cr 10 and Pt-Cr 20 is different, and this can be due to the different amount of Nafion in both set of nanoparticles. The degradation rate of Pt/C slowed down after 2400 cycles, reducing 10% more after 4800 cycles. Although the ECSA of Pt/C is still higher than Pt-Cr alloys after 4800 cycles, Pt/C has already lost 50% of its initial active area. Pt-Cr alloys have retained 75-80% of the initial active area, which shows the better durability of these catalysts. The degradation of Pt/C is known to occur due to various reasons, including 1) increase in the Pt particle size, 2) dissolution of the catalysts and 3) carbon corrosion<sup>46-50</sup>. On the other hand, the Nafion stabilized Pt-Cr catalyst systems showed only a 20-25% loss of ECSA. This enhanced durability is attributed to 1) the presence of Pt-Cr alloys and 2) Nafion stabilization of the catalyst nanoparticles. As evident from the TEM images, the Pt-Cr nanoparticles are in close coordination due to Nafion stabilization and this can help inhibit the Pt dissolution, diffusion and sintering processes resulting in better durability of these catalysts. It has also been reported in literature that Nafion stabilization helps in preventing catalyst degradation<sup>9, 10, 12, 51, 52</sup>. It has also been reported in literature that Nafion stabilisation helps in preventing catalyst degradation<sup>9, 10, 12, 51, 52</sup>. Limited literature on Pt-Cr alloy<sup>5, 14, 15, 53-56</sup> systems, in the absence of Nafion stabilisation, reported ECSA values which were similar to the initial ECSA values observed for Pt-Cr systems in this study. However, these reports did not investigate the durability of Pt-Cr alloys either by studying the change in ECSA or by any other method.

Figure 7 shows the relationship between voltage and power density with respect to current density for the three catalyst systems. The current and power density are normalised to the Pt loading (0.3-0.4 mg/cm<sup>2</sup>). A figure without Pt normalisation is shown in the supporting information (S5). Pt-Cr 20/C shows a comparable performance as compared to the Pt/C catalyst and the slight difference can be due to the following reasons: i) The amount of Pt in alloy

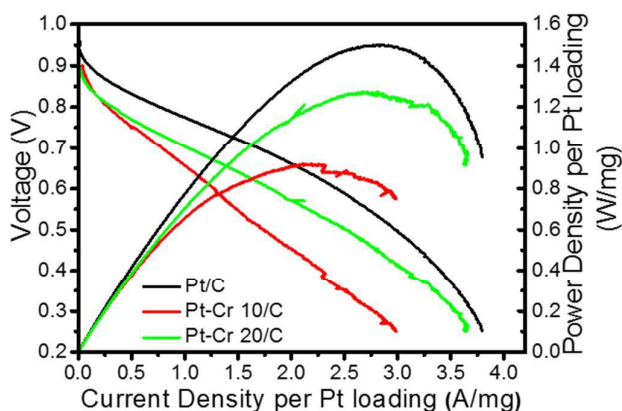


Figure 7: Current density and power density curves for Pt/C, Pt-Cr 10/C and Pt-Cr 20/C in single cell fuel cell testing condition after preparation of membrane electrode assembly. The curves are normalised by Pt loading.

was not sufficient to allow uniform distribution of Pt on the MEA resulting in some areas with low or no catalyst concentration; ii) The agglomeration of nanoparticles, which also led to reduced ECSA (as seen from the RDE testing); iii) The amount of Nafion that was used in these systems is higher than the optimum value required for such a system and may block some of the catalytic sites. As mentioned earlier, Nafion stabilization results in improved contact between Pt nanoparticles and carbon support, resulting in the formation of an extended triple phase boundary. Thus, the better performance of the Pt-Cr 20 as compared to Pt-Cr 10 is likely a result of the higher amount of Nafion in the former that leads to a more effective triple phase boundary.

Theoretically, the trend of ex-situ results (i.e. ECSA and specific activity) should follow the trend of in-situ results (i.e. power density). However, this is not always the case due to several factors that can vary between ex-situ and in-situ techniques<sup>57, 58</sup>, including operation temperature (ex-situ studies are carried out at room temperature while in-situ tests are carried out at 80 °C), distribution of the nanoparticles on the MEAs and thickness of the catalyst layer. In the present case, we reported the agglomeration of nanoparticles, which can be more visible in the ex-situ results due to the very small amount of catalyst used. The in-situ results are expected to better reflect upon the behaviour of the catalyst as the general in-situ set-up is much closer to the operation of a real fuel cell.

The better performance of Pt-Cr 20/C catalyst as compared to Pt-Cr 10/C can be attributed to the more convenient Pt availability for the reaction. Moreover, the presence of higher amount of Cr<sub>2</sub>O<sub>3</sub> in Pt-Cr 20/C can further enhance the activity of the alloy catalyst. The presence of metal oxides is considered to improve the performance of the catalyst by the dissolution of metal oxide, thereby, allowing exposure of Pt for participation in electrochemical reactions<sup>2, 59, 60</sup>. From the ex-situ and in-situ testing of the catalysts it can be said that Pt-Cr 20/C shows a better catalytic activity and durability in comparison to the commercial Pt/C catalyst.

## Conclusions

Pt-Cr alloy nanoparticles stabilised in Nafion with average particle size of  $6 \pm 2$  nm and Cr concentrations of 20-30 at.% were successfully synthesised.

The ex-situ electrochemical tests revealed that the specific activity of Pt-Cr 20/C is almost twice that of Pt/C. The degradation studies carried out ex-situ using accelerated stress testing also confirmed that the Nafion stabilised Pt-Cr alloys have superior durability with only 20-25% loss in ECSA after 4800 cycles as compared to commercial Pt/C which lost almost 50% of its activity during the same time. The superior performance is ascribed to improved alloy-catalyst-ionomer interaction leading to minimal catalyst dissolution (one of the primary reasons for catalyst loss in fuel cells). The in-situ testing of the catalysts showed that the performance of Pt-Cr 20/C in terms of current density is comparable to that of the commercial Pt/C making them promising potential catalysts for PEMFCs.



The performance of these alloys can be further enhanced by optimisation of the amount of Nafion in the system. Thus, with the use of this system, it is possible to achieve reduced Pt loading and enhanced performance and durability for the PEMFC system while improving its economic viability. Future studies will look into optimisation of Nafion content to further enhance current density while maintaining the durability of the system.

### Acknowledgements

The authors acknowledge financial support of this work by the EPSRC (EP/K027263/1) and ERC (Consolidator Grant 614787).

### Notes and references

1. W. Vielstich, A. Lamm and H. A. Gasteiger, eds., *Handbook of Fuel Cells: Fundamentals, Technology, Applications*, Wiley, New York, 2003.
2. J. Zhang, ed., *PEM Fuel Cell Electrocatalysts and Catalyst Layers: Fundamentals and Applications*, Springer, 2008.
3. Y. Wang, K. S. Chen, J. Mishler, S. C. Cho and X. C. Adroher, *Applied Energy*, 2011, **88**, 981-1007.
4. S. Sharma and B. G. Pollet, *Journal of Power Sources*, 2012, **208**, 96-119.
5. E. Antolini, *Materials Chemistry and Physics*, 2003, **78**, 563-573.
6. Y. Bing, H. Liu, L. Zhang, D. Ghosh and J. Zhang, *Chemical Society reviews*, 2010, **39**, 2184-2202.
7. N. M. Markovic, T. J. Schmidt, V. Stamenkovic and P. N. Ross, *Fuel Cells*, 2001, **1**, 105-116.
8. W. Yu, M. D. Porosoff and J. G. Chen, *Chemical reviews*, 2012, **112**, 5780-5817.
9. L. S. Sarma, T. D. Lin, Y.-W. Tsai, J. M. Chen and B. J. Hwang, *Journal of Power Sources*, 2005, **139**, 44-54.
10. O. J. Curnick, P. M. Mendes and B. G. Pollet, *Electrochemistry Communications*, 2010, **12**, 1017-1020.
11. O. J. Curnick, B. G. Pollet and P. M. Mendes, *RSC Advances*, 2012, **2**, 8368.
12. Z. Liu, Z. Q. Tian and S. P. Jiang, *Electrochimica Acta*, 2006, **52**, 1213-1220.
13. S. Mukerjee and S. Srinivasan, *Journal of Electroanalytical Chemistry*, 1993, **357**, 201-224.
14. H. Yang, N. Alonso-Vante, J.-M. Leger and C. Lamy, *Journal of Physical Chemistry B*, 2004, **108**, 1938-1947.
15. E. Antolini, J. R. C. Salgado, L. G. R. A. Santos, G. Garcia, E. A. Ticianelli, E. Pastor and E. R. Gonzalez, *J Appl Electrochem*, 2006, **36**, 355-362.
16. M. Uchimura and S. S. Kocha, *ECS Transactions*, 2007, **11**, 1215-1226.
17. Y. Liu and C. Xu, *ChemSusChem*, 2013, **6**, 78-84.
18. K. Jayasayee, J. A. R. V. Veen, T. G. Manivasagam, S. Celebi, E. J. M. Hensen and F. A. de Bruijn, *Applied Catalysis B: Environmental*, 2012, **111-112**, 515-526.
19. A. Ignaszak, C. Teo, S. Ye and E. d. Gyenge, *The Journal of Physical Chemistry C*, 2010, **114**, 16488-16504.
20. B. Lim, X. Lu, M. Jiang, P. H. Camargo, E. C. Cho, E. P. Lee and Y. Xia, *Nano letters*, 2008, **8**, 4043-4047.
21. Z. Chen, M. Waje, W. Li and Y. Yan, *Angewandte Chemie*, 2007, **46**, 4060-4063.
22. B. Han and C. Xu, *International Journal of Hydrogen Energy*, 2014, **39**, 18247-18255.
23. H. Duan, Q. Hao and C. Xu, *Journal of Power Sources*, 2015, **280**, 483-490.
24. I. Savych, S. Subianto, Y. Nabil, S. Cavaliere, D. Jones and J. Roziere, *Physical chemistry chemical physics: PCCP*, 2015, **17**, 16970-16976.
25. O. Curnick, Doctor of Philosophy, University of Birmingham, UK, 2012.
26. M. K. Jeon, Y. Zhang and P. J. McGinn, *Electrochimica Acta*, 2009, **54**, 2837-2842.
27. M.-S. Hyun, S.-K. Kim, B. Lee, D. Peck, Y. Shul and D. Jung, *Catalysis Today*, 2008, **132**, 138-145.
28. O. A. Baturina, S. R. Aubuchon and K. J. Wynne, *Chemistry of Materials*, 2006, **18**.
29. S. R. Samms, S. Wasumus and R. F. Savinell, *Journal of The Electrochemical Society*, 1996, **143**, 1498.
30. B. D. Cullity, *Elements of X-ray diffraction*, Addison-Wesley Publishing Company, Inc., Reading, Massachusetts, 1956.
31. C. Suryanarayana and M. G. Norton, *X-Ray Diffraction: A Practical Approach*, Plenum Press, New York, 1998.
32. M. Schulze, M. Lorenz, N. Wagner and E. Gülzow, *Fresenius J Anal Chem*, 1999, **365**, 106-113.
33. M. V. Martínez de Yuso, L. A. Neves, I. M. Coelho, J. G. Crespo, J. Benavente and E. Rodríguez-Castellón, *Fuel Cells*, 2012, **12**, 606-613.
34. S. Tan and D. Belanger, *The journal of physical chemistry. B*, 2005, **109**, 23480-23490.
35. G. Gupta, P. Iqbal, F. Yin, J. Liu, R. E. Palmer, S. Sharma, K. C.-F. Leung and P. M. Mendes, *Langmuir: the ACS journal of surfaces and colloids*, 2015, **31**, 6917-6923.
36. A. M. Salvi, J. E. Castle, J. F. Watts and E. Desimoni, *Applied Surface Science*, 1995, **90**, 333-341.
37. J. F. Moulder, W. F. Stickle, P. E. Sobol and K. D. Bomben, *Handbook of X-ray Photoelectron Spectroscopy*, Physical Electronics, Inc., Minnesota, United States of America, 1995.
38. S. Sharma, A. Ganguly, P. Papakonstantinou, X. Miao, M. Li, J. L. Hutchison, M. Delichatsios and S. Ukleja, *The Journal of Physical Chemistry C*, 2010, **114**, 19459-19466.
39. A. S. Aricò, A. K. Shukla, H. Kim, S. Park, M. Min and V. Antonucci, *Applied Surface Science*, 2001, **172**, 33-40.
40. I. G. Casella and E. Desimoni, *Electroanalysis*, 1996, **8**, 447-453.
41. A. K. Shukla, M. Neergat, P. Bera, V. Jayaram and M. S. Hegde, *Journal of Electroanalytical Chemistry*, 2001, **504**, 111-119.
42. A. Sarkar and A. Manthiram, *Journal of Physical Chemistry C*, 2010, **114**, 4725-4732.
43. P. Choi, N. H. Jalani and R. Datta, *Journal of The Electrochemical Society*, 2005, **152**, E84.
44. F. Bauer, S. Denneker and M. Willert-Porada, *Journal of Polymer Science Part B: Polymer Physics*, 2005, **43**, 786-795.
45. M. B. Satterfield, P. W. Majsztzik, H. Ota, J. B. Benziger and A. B. Bocarsly, *Journal of Polymer Science Part B: Polymer Physics*, 2006, **44**, 2327-2345.
46. X. Yu and S. Ye, *Journal of Power Sources*, 2007, **172**, 145-154.
47. D. A. Stevens and J. R. Dahn, *Carbon*, 2005, **43**, 179-188.

## Journal Name

## ARTICLE

48. Y. Shao, G. Yin and Y. Gao, *Journal of Power Sources*, 2007, **171**, 558-566.
49. Y. Shao, G. Yin, Y. Gao and P. Shi, *Journal of The Electrochemical Society*, 2006, **153**, A1093.
50. Z.-B. Wang, P.-J. Zuo, Y.-Y. Chu, Y.-Y. Shao and G.-P. Yin, *International Journal of Hydrogen Energy*, 2009, **34**, 4387-4394.
51. N. Cheng, S. Mu, M. Pan and P. P. Edwards, *Electrochemistry Communications*, 2009, **11**, 1610-1614.
52. S. Yin, S. Mu, H. Lv, N. Cheng, M. Pan and Z. Fu, *Applied Catalysis B: Environmental*, 2010, **93**, 233-240.
53. H. Yang, N. Alonso-Vante, C. Lamy and D. L. Akins, *Journal of The Electrochemical Society*, 2005, **152**, A704-A709.
54. H. Yano, M. Kataoka, H. Yamashita, H. Uchida and M. Watanabe, *Langmuir : the ACS journal of surfaces and colloids*, 2007, **23**, 6438-6445.
55. S. Mukerjee, S. Srinivasan, M. P. Soriaga and J. McBreen, *The Journal of Physical Chemistry*, 1995, **99**, 4577-4589.
56. M.-k. Min, J. Cho, K. Cho and H. Kim, *Electrochimica Acta*, 2000, **45**, 4211-4217.
57. A. Kongkanand, N. P. Subramanian, Y. Yu, Z. Liu, H. Igarashi and D. A. Muller, *ACS Catalysis*, 2016, **6**, 1578-1583.
58. Y. Huang, J. Zhang, Y. Liu, N. P. Subramanian, F. T. Wagner, J. Jorne and J. Li, 2011, DOI: 10.1149/1.3635633, 1009-1020.
59. A. Seo, J. Lee, K. Han and H. Kim, *Electrochimica Acta*, 2006, **52**, 1603-1611.
60. K.-W. Park, J.-H. Choi, B.-K. Kwon, S.-A. Lee, Y.-E. Sung, H.-Y. Ha, S.-A. Hong, H. Kim and A. Wieckowski, *The Journal of Physical Chemistry B*, 2002, **106**, 1869-1877.