

Cite this: *Chem. Sci.*, 2018, 9, 8819

All publication charges for this article have been paid for by the Royal Society of Chemistry

Spontaneous growth of 2D coordination polymers on functionalized ferromagnetic surfaces†

Michele Mattera,^a Víctor Rubio-Giménez,^a Sophie Delprat,^b Richard Mattana,^b Pierre Seneor,^b Sergio Tatay,^{‡*a} Alicia Forment-Aliaga^{‡*a} and Eugenio Coronado^{‡*a}

The spontaneous growth of lamellar metal-alkanethiolates (LMAs) on reactive ferromagnetic surfaces as a result of surface oxidation has been observed. When alkanethiol self-assembled monolayers (SAMs) grown under an inert atmosphere over cobalt or permalloy (Ni₈₀Fe₂₀) are exposed to air, oxygen diffuses through the molecular layer. This induces an oxidation of metal atoms at the metal surface and a release of the resulting metal cations that migrate coordinated by the alkanethiol molecules to form lamellar structures over the SAMs. This process has been imaged in real-time, under ambient conditions, by means of different microscopy techniques. The influence of the alkyl chain length, the nature of the ferromagnet, the temperature and the atmospheric moisture on the number, area and height of the resulting features has been systematically evaluated. Remarkably, the possibility to follow the migration in real-time makes it a promising model system for the study of surface/molecule interface processes. Most importantly, the composition and crystallinity of these LMAs have been studied, evidencing that real 2D coordination polymers are formed on the surface. Hence, one could envision this strategy as a new method for the assembly of more complex low-dimensional (2D) magnetic materials based on coordination polymers.

Received 11th July 2018

Accepted 15th September 2018

DOI: 10.1039/c8sc03067g

rsc.li/chemical-science

Introduction

As in the bulk, molecules can self-assemble on surfaces, giving rise to supramolecular structures in two dimensions, which can be more interesting than their individual counterparts. An archetypical example of this approach is provided by the growth of self-assembled monolayers (SAMs) over coinage metals (gold for example). In this case, the self-assembly method most often involves a solution containing surfactant molecules able to be chemisorbed to the surface through specific anchoring groups (like thiol for gold) and to self-assemble *via* intermolecular van der Waals (vdW) interactions to afford efficient molecular packing.¹ This has led to the widespread use of SAMs in areas like nanotribology and surface protection,² organic electronics,³ sensing,⁴ and lithography,⁵ to mention only a few.

Alternatively, molecules can also spontaneously self-assemble when they are physisorbed to the surface. Here, the

final molecular arrangement comes from a delicate balance between molecule–molecule and molecule–surface weak non-covalent interactions. In these cases, both solution methods⁶ and ultra-high vacuum (UHV) techniques⁷ have been extensively used to create these supramolecular nanostructures and scanning tunneling microscopy (STM) has been mainly chosen to visualize and even to manipulate the resulting network. Additionally, when coordination bonds are formed between the physisorbed organic ligands on a surface and the metal atoms above the surface plane, molecules can spontaneously self-assemble into ordered coordination polymers (CPs) in two dimensions.^{7–9} This surface-assisted coordination chemistry process has so far been developed in UHV. As organic ligands, polyaromatic molecules substituted with donor groups capable of coordinating metal atoms have been mainly used in order to favor a planar adsorption geometry on the metal surface. This method has provided examples that go from discrete coordination nanostructures to extended 2D metal–organic networks, which might be of interest in host/guest chemistry, heterogeneous catalysis and magnetism, to name a few.^{7–11}

During the above mentioned self-assembly processes, the presence of solvent allows dynamic exchange between the molecules already adsorbed on the surface and those present in the solution, thus increasing the complexity of the self-assembly at the liquid/solid interface in comparison with that encountered at the UHV/solid interface and hampering the monitoring

^aInstituto de Ciencia Molecular, Universitat de València, Catedrático José Beltrán 2, 46980 Paterna, Spain. E-mail: alicia.forment@uv.es; sergio.tatay@uv.es

^bUnité Mixte de Physique CNRS/Thales, CNRS, Thales, Université Paris-Sud, Université Paris Saclay, 91767 Palaiseau, France

† Electronic supplementary information (ESI) available: Materials and methods section, statistical analysis of the LMAs' morphology and density (PDF), and AFM and optical images of the LMAs' evolution (mp4). See DOI: 10.1039/c8sc03067g

‡ These authors contributed equally.



of the self-assembly process. When a solution method is used, the choice of molecules is larger since it is not limited to easily sublimable small molecules, and the equipment and laboratory conditions required are simpler.

As a part of our investigation on the fabrication of molecular-based spintronic devices, we have prepared hybrid interfaces formed by ferromagnetic metal surfaces functionalized with SAMs of alkanethiol molecules.¹² Notice that the chemical modification of metallic ferromagnetic surfaces, like cobalt, iron, nickel and their alloys, such as permalloy (NiFe), currently represents a technological challenge. This is mainly due to the fast oxidation of these surfaces when exposed to air, because they tend to develop a passivating oxide layer that is deleterious to spintronic applications.^{13–17} Our method, which is based on wet chemistry etching and does not need complex lab equipment, has been shown to overcome this problem. Moreover, it offers the advantage of selectively removing the passivating oxide without increasing the surface roughness. However, we have observed that when the resulting hybrid interface is exposed to air, layered structures of an interfacial material appear over the SAM. We will show here that this observation can be on the basis of a radically new self-assembly approach to grow CPs on these reactive metal surfaces, which involves the spontaneous growth at ambient pressure of physisorbed lamellar materials from alkanethiol molecules chemisorbed on a metal surface. The resulting 2D material is a CP formed by the assembly of a metal ion extracted from the metal substrate and alkanethiol molecules extracted from the SAM. We present a real-time imaging study of this 2D assembly directly onto surfaces, unveiling the growth process. Thus, in the first step, alkanethiol ($C_nH_{2n+1}SH$, C_nS , $n = 14, 16, \text{ and } 18$) SAMs were chemisorbed under an inert atmosphere on metallic ferromagnetic surfaces. The functionalized substrates were exposed

in the second step to air, and layered structures visibly and rapidly evolved on the surface. The number, size and thickness of the layers were found to depend on the nature of the substrate and the chain length used. This was studied using scanning electron microscopy (SEM), atomic force microscopy (AFM) and optical microscopy. The growth of the lamella took place under ambient conditions, in a solvent-free environment, spontaneously and without the use of any external stimulus.

Results and discussion

We have prepared SAMs of alkanethiols ($C_nH_{2n+1}SH$, C_nS , $n = 14, 16, \text{ and } 18$) on cobalt and permalloy (Py) under an inert atmosphere using our previously described method.¹² The quality of the SAMs was determined using AFM and contact angle (CA) measurements (Table S1 and Fig. S1†). The SAM samples could be stored inside a glovebox for several days without appreciable changes. However, when they were exposed to air, layered structures formed spontaneously, readily observed by SEM, AFM or optical microscopy (Fig. 1 and S2†), and evolved on the surface of the C14S–C18S samples in a solvent-free environment, over a period of approximately 16 hours.

Remarkably, our reference samples (*i.e.* prepared exactly in the same way but without the presence of the thiol SAM) did not evolve into islands. Hence, while the formation of oxide islands on bare metals, such as aluminium¹⁸ and copper–platinum alloy,¹⁹ was reported previously in the literature, the nature of the observed features is different here. This suggests that the alkanethiol molecules play an essential role in the formation of lamellar motifs. Thus, we hypothesize that these lamellae contain alkanethiol molecules in their composition. Inspecting the literature we noted that layered materials based on metal-

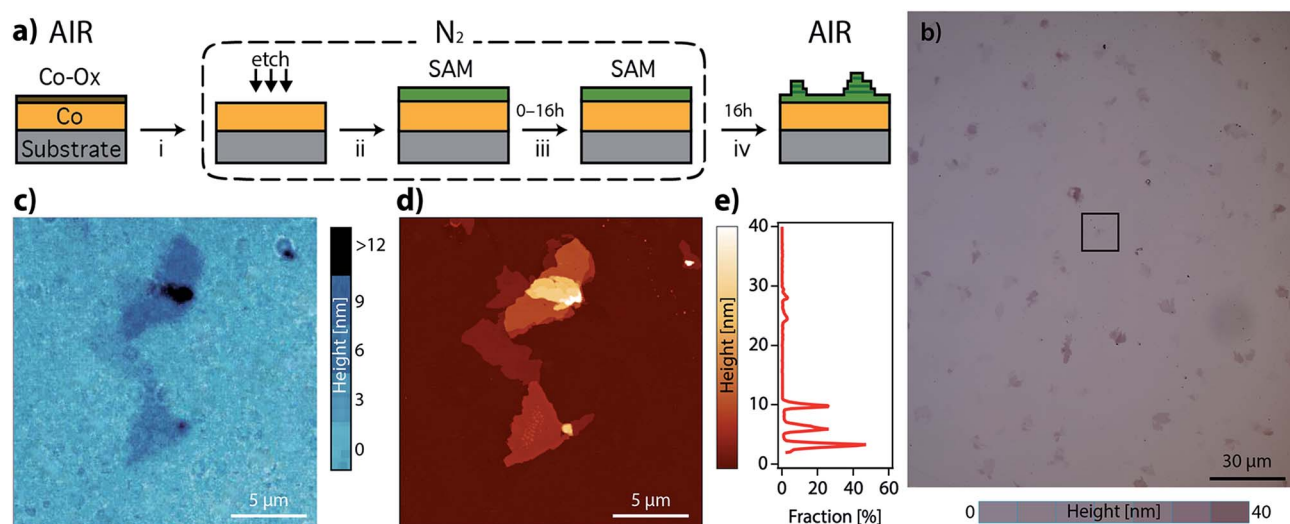


Fig. 1 (a) Schematic representation of the lamellar structure growth process: (i) a silicon substrate covered by several nm of a ferromagnetic material with a native oxide layer is placed inside a glovebox. (ii) After chemical etching of the oxide layer, a C_nS SAM is formed in solution on the recovered surface. (iii) While the sample is kept in an inert atmosphere a perfect conventional SAM structure is maintained. (iv) Once the sample is taken out of the glovebox and exposed to air, lamellar structures start growing, and the growth process lasts for approx. 16 hours. (b) Optical image recorded using a ND filter of a C14S–Co sample exposed to air for 16 hours. (c) Optical image of the zone marked with a black square in (b). (d) AFM topographic image of the same zone clearly showing the layered nature of the new material. (e) Topographic height distribution of (d).



alkanethiolate complexes are known. These layered metal-alkanethiolates (LMAs) are CPs with the general formula $M^{n+}(CnS^-)_n$ (with $n \geq 1$ and $M = Ag,^{20-25} Au,^{26,27} Cu,^{28-30} Pd^{31-33}$ or $Ni^{34,35}$). Their structure is formed by the stacking up of repeating slabs, which consist of a sulfur-metal central plane sandwiched between two layers of fully extended alkanethiol ligands coordinating the metal ions. The stack is held together through interslab van der Waals (vdW) interactions between neighboring alkyl chains, resembling other well-known inorganic 2D vdW layered materials like graphene or transition metal dichalcogenides (TMDCs).^{36,37}

In order to identify our lamella, we selectively removed the passivating oxide of 15 nm Co and Py films deposited over silicon substrates with glycolic acid and exposed the etched surfaces to ethanolic solutions of alkanethiols (CnS , $n = 14, 16$, and 18) under an inert atmosphere. After 16 hours, the treated substrates were removed from the solution, rinsed with ethanol, dried by blowing nitrogen and exposed to air to let the lamella grow. Fig. S2a-d† show optical and SEM images of a C14S cobalt sample surface where domains with thicknesses below 10 nm have grown as confirmed by AFM (thickness corresponding to a bilayer, see below). Fig. S3† shows images of a C14S island grown on Py taken by means of AFM, SEM and optical microscopy. The height of the domain is larger in this case and

presents a more irregular profile. The contrast observed in the optical images is very weak (Fig. S3b†), but when the amount of light that reaches the detector is reduced by means of a neutral-density filter (ND), it considerably improves (Fig. S3c†). SEM was not so effective (Fig. S3d†), as these images showed poorer height contrast. Moreover, we observed sample damage after prolonged electron beam exposure using a 20 keV acceleration voltage.

Structural characterization

Island step height (ISH). In order to perform a detailed study about the structure of the domains, we first used AFM to obtain local quantitative topographic 3D information. The topographic images and the corresponding height distributions of the islands formed from C14S, C16S and C18S alkanethiol samples present multiple levels with well-defined height steps (Fig. S4†). We used the step height data measured on at least 6 islands for each chain length on Co and Py to build ISH histograms from which we estimated the most probable step height (Fig. 2f and Table S2†). Although no remarkable differences between equivalent Co and Py SAM functionalized samples were noticeable, a clear increase in height with the number of carbon atoms was observed (Fig. 2e), which confirms that these islands

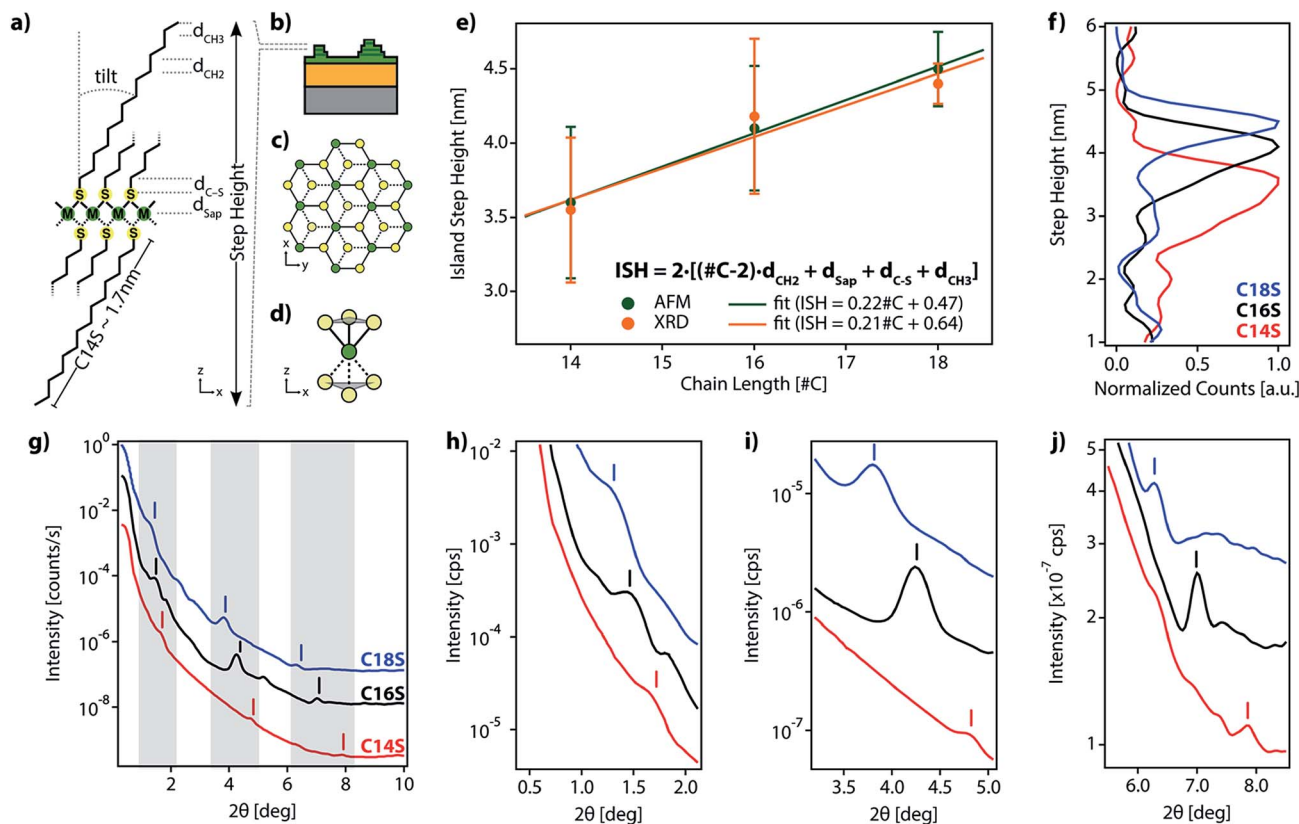


Fig. 2 (a and b) LMAs' proposed structural model for the spontaneously grown lamellar motifs. (c and d) Detail of the suggested S–M coordination. (e) ISH dependence on chain length as calculated from AFM (green dots) and XRD (orange dots) data; error bars for XRD data and AFM are standard deviations, and the solid lines are linear fittings of the data ($ISH = mn + b$). (f) ISH distributions calculated from the ISH data measured using AFM on at least 6 islands for each chain length. (g) Synchrotron out-of-plane XRD data. (h–j) Magnification of the gray zones displayed in (g).



are alkanethiol-based structures. In order to have further experimental proof of the layered nature of the island domains and the ISH values, we also ran a series of synchrotron surface XRD measurements at the Diamond Light Source I07 beamline (12.5 keV, room temperature). To minimize ferromagnetic layer contribution, we covered several silicon substrates with only 4 nm of Co (we usually work with 15 nm Co or Py films). XRD measurements were recorded after the samples were functionalized with C14S, C16S and C18S and exposed to air. Representative diffractograms are shown in Fig. 2g–j. We observe three equally spaced diffraction peaks in all samples. The average interlayer spacing determined from the periodicity measured in different samples, after applying Bragg's law³⁸ ($2d \sin \theta = n\lambda$) with $n = 1$ and $\lambda = 0.9918 \text{ \AA}$ (C18S $\Delta 2\theta = 2.47$ deg. and $d = 23.01 \text{ \AA}$, C16S $\Delta 2\theta = 2.69$ and $d = 21.09 \text{ \AA}$, and C14S $\Delta 2\theta = 3.25$ and $d = 17.48 \text{ \AA}$), closely corresponds to half of the step height determined by AFM (Fig. 2e (green dots) and Table S2†). Thus, we consider that the islands formed from C14S show an average step height of 3.6 nm, which increases to 4.1 nm for those based on C16S and finally to 4.6 nm for those based on C18S. As can be seen, there is a linear dependence between the alkanethiol chain length and the ISH of the obtained islands, which indicates that the three materials share a common internal structure.^{20,22,25}

This clear dependence on the alkyl chain length rules out the idea of the islands being mainly composed of metal oxide and supports the possibility that during the oxidation of the surface beneath the formed SAM (air exposure), there is a reorganization of the organic molecules into lamellar alkanethiolate domains in which metal ions extracted from the metal surface upon oxidation are coordinated to the organic molecules. Hence, the above results support, in accordance with the LMA structure proposed in Fig. 2, that (i) our motifs present a layered structure, (ii) alkyl chains form part of the structure of the lamella and (iii) step heights are fixed by the length of the organic molecules.

Structural model. According to this hypothesis, it is possible to build a structural model based on the ISH data (Fig. 2a). The ISH should be the sum of the contributions coming from (1) the methylene chain length ($(n - 2)d_{\text{CH}_2}$), d_{CH_2} being the vertical C–C distance and n being the number of carbons in the chain, and (2) d_0 , which represents the contribution provided by the sum of the distance from the S atom to the metal plane (d_{Sap}), the C–S bond distance ($d_{\text{C-S}}$) and the length of the terminal methyl group (d_{CH_3}). Thus, $\text{ISH} = 2[(n - 2)d_{\text{CH}_2} + d_0]$, where $d_0 = d_{\text{Sap}} + d_{\text{C-S}} + d_{\text{CH}_3}$. We used the results from the linear fitting of the AFM step height ($\text{ISH} = mn + b$) displayed in Fig. 2e to obtain the following values: $d_{\text{CH}_2} = m = 0.22 \text{ nm}$ and $2d_0 = b + 2d_{\text{CH}_2} = 0.92 \text{ nm}$. Assuming that the CH_2 groups in the alkyl chain are fully stretched, and taking into account that the theoretical carbon–carbon vertical distance is 0.125 nm ,³⁹ we can estimate a chain tilt angle of around 30° from d_{CH_2} . This value is close to the expected one for closely packed alkyl chains on gold.¹ From the theoretical carbon sulfur bond length $d_{\text{C-S}} = 0.182 \text{ nm}$,³⁹ and the theoretical vdW radius of the methyl group $d_{\text{CH}_3} = 0.210 \text{ nm}$, we can derive $d_{\text{Sap}} = 0.068 \text{ nm}$. Here the methyl group radius is calculated from the average value of the distance between the

carbon located before the methyl carbon and the last hydrogen(s) that points to the next layer.²⁰ In Table S4,† we summarize the d_{CH_2} and $2d_0$ values calculated from AFM and XRD data and the ISH reported in the literature for bulk nickel, palladium and silver LMAs. As can be observed, our values are not far from some of those previously reported values, indicating again that the islands are composed of surface-bound spontaneously grown LMAs.

Additionally, we performed a search in the Cambridge Structural Database (CSD) for coordination motifs where a single sulfur atom bridges two ($\mu_2\text{S-M}$) or three ($\mu_3\text{S-M}$) Co, Fe or Ni metal atoms. From this query, we obtained 2842 and 18 hits, respectively. The average values for d_{Sap} , in the cases of $\mu_2\text{S-M}$ and $\mu_3\text{S-M}$ bridges, are 0.182 nm and 0.148 nm , respectively. We observed that our d_{Sap} values calculated from AFM (0.068 nm) and XRD data (0.133 nm) are below the $\mu_3\text{S-M}$ value. In spite of the experimental error, we can assume that the more plausible structure is the one where the metal center coordination is octahedral and S is μ_3 -coordinated and binds to the metal plane, forming a regular pyramid with a triangular base, as has been proposed for other LMAs.^{23,24,27,40} These will result in a hexagonal network packing, formed by octahedral MS_6 sites with half of the S atoms above and below the plane being formed by the M atoms, as represented in Fig. 2a–d. This kind of packing resembles the one adopted by layered double hydroxides (LDHs) and by hexagonal TMDCs.³⁶

Interestingly, the domains grown on the surface can be considered as vdW 2D crystals, *i.e.* in-plane interactions are stronger than those between the planes to the point that exfoliation is possible.⁴¹ This is evidenced by the fact that when the domains are repeatedly scanned with an AFM tip at low set points, some material is progressively removed from the surface in a stepped way, successively exposing new layers formerly buried (Fig. 3a–d). Quite remarkably, as with vdW 2D crystals not only interactions between planes are weak, but interactions with the surface are weak too. This is highlighted to the point that the domains can be completely etched away using AFM or by exposure to UHV for extended periods of time (Fig. 3e–h and Video S1†).

Island average height (IAH). We now focus on the average height of the islands. From the AFM height distribution measured in at least 5 samples for each chain length over Co and Py and considering the island average step height for C14S, C16S and C18S alkyl chains determined above, we computed the fraction of the island area corresponding to each height/number of layers. This is represented by the histograms in Fig. 4a and b. The bold lines in these figures are cumulative height fractions. From the cumulative fractions, we extracted the IAH, most probable height for each alkyl chain, and the corresponding P85 and P50 values (Fig. 4a, b and Table S3†). P85 and P50 represent the height below which 85% and 50% of the observations fall. Analyzing the P85 values of Co and Py, we can observe a clear trend: while C18S islands are formed in most cases by a single layer, C14S islands are thicker multilayers. Moreover, islands on Co are thinner than those observed on Py.

Island average area (IAA). Although AFM is a very precise technique and the only one that really gives true topographic



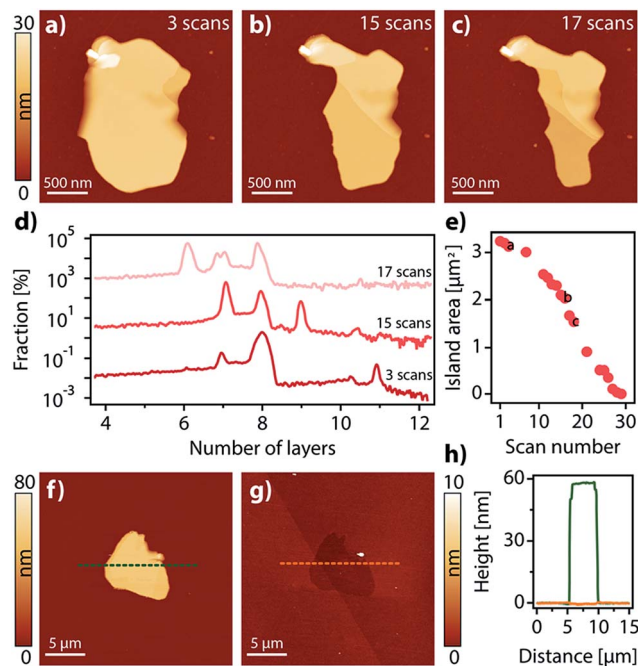


Fig. 3 (a–c) Successive topographic images of a Py–C14S domain. (d) Height distribution corresponding to (a–c); 15 and 17 scan data have been shifted for clarity. (e) Projected area evolution as a function of scan number of the domain shown in (a–c). (f and g) Topographic AFM images of a C14S island on Co before and after UHV exposure. (h) Corresponding height profiles of the marked lines.

information of the sample, it is not well suited to study large surface areas (above 200–250 μm^2). For that reason, we used optical microscopy to evaluate domain size distributions. To perform a statistical analysis, we first prepared Co and Py samples with SAMs for each chain length (C*n*S, *n* = 14, 16 and 18) and randomly imaged at least 3 different areas of each

sample using optical microscopy. Representative optical images are shown in Fig. S5.† At a first glance, it is possible to observe that alkyl chain length has an important influence on the size and number of the formed domains. Using imaging processing software⁴² we obtained domain area histograms for each chain length. Due to the different sizes of the islands, we had to choose the appropriate image size for each case. We used $433 \times 380 \mu\text{m}^2$ images for the C14S and C16S, while $253 \times 190 \mu\text{m}^2$ images were used for C18S. The results are presented in Fig. 4c and d. The bold lines in these figures are cumulative fractions obtained from the integration of area fraction data. From the cumulative fractions, we derive the average area of the islands formed for each alkyl chain and the corresponding P85 and P50 values (Table S5†). As can be seen, for Co and Py, shorter chain lengths give rise to larger islands. However, fewer islands are detected on Py and they tend to be smaller than those found on Co for all chain lengths. Therefore, longer alkyl chains give rise to not only thinner (smaller IAH) but also smaller domains (smaller IAA). However, using optical microscopy it was possible to find islands that, despite being very few in number, showed remarkably larger areas (up to 500 μm^2) than those included in the analysis analysis (*i.e.* Fig. S4d and e†). From the analyzed optical images, we also extracted the number of islands (*N*) and the total area covered by the islands (*C*). As shown in Fig. 4c, d and Table S5,† moving from the C14S to the C18S, the cobalt coverage increases from approximately 5% to 18%. Moreover, in spite of following the same trend, the measured coverage in the case of Py is always below that measured for Co and never exceeds 5%.

Using the IAH derived from AFM (Table S3†) and the coverage values, we can make a rough calculation of the amount of material that has displaced from the original SAM into the island domains: $D = 2 \times \text{IAH} \times C / \text{ISH}$, where *D* is the percentage of the displaced material, IAH is the island average height, ISH is the calculated island step height for each chain

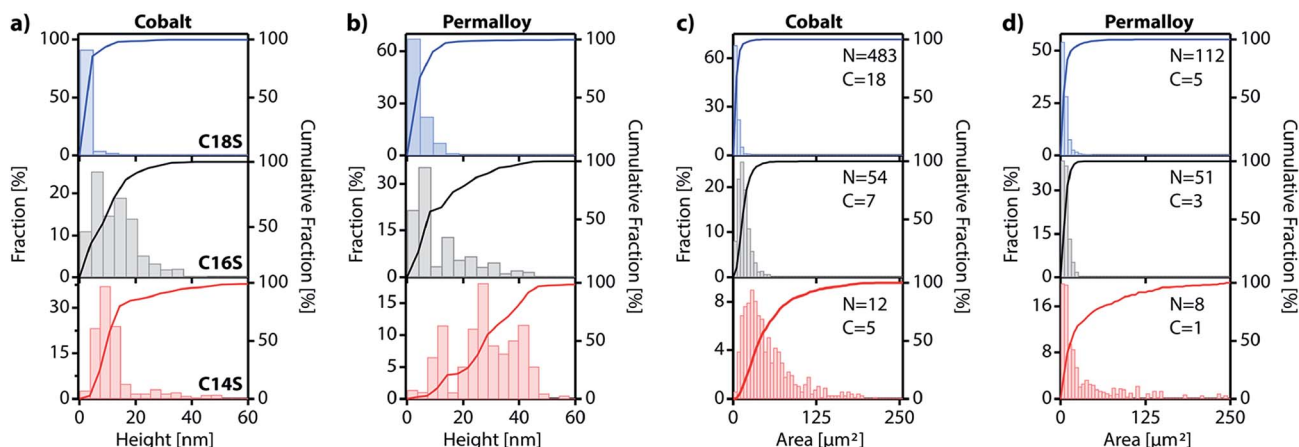


Fig. 4 (a and b) Island height fraction distribution and cumulative height fraction extracted from the AFM images of C18S (blue), C16S (gray) and C14S (red) cobalt (a) and permalloy (b) samples; the bin size is 3.6, 4.1 and 4.6 nm for C14S, C16S and C18S, respectively. (c and d) Island area fraction distribution and cumulative area fraction extracted from the optical images of C18S (blue), C16S (gray) and C14S (red) cobalt (c) and permalloy (d) samples. *N* is the number of islands/100 μm^2 and *C* is the island coverage in %. The bin size is 5 μm^2 . On both Co and Py, for statistical analysis based on AFM images, we imaged different areas of at least 5 samples for each chain length. For statistical analysis based on optical images, we imaged 3 areas of at least 3 samples for each chain length.



length and C is the coverage. For Co, D values for C14S, C16S and C18S are 39.3%, 68.5% and 48.5%, respectively. The calculated value for C18S on cobalt is very close to the exact value of 45.6% obtained from AFM data (*i.e.* Fig. 6g). For Py, the values are $D = 15.4\%$, 15.9% and 11.2% . These lower values reflect the lower tendency of Py to form island domains. In any case, what seems clear is that the space between islands is not completely void and that there are still SAM molecules present on the surface.

Spectroscopic characterization

Auger electron spectroscopy (AES). To gain chemical information and further confirm the structure proposed above, we performed AES analysis on our samples. Fig. 5a–c shows AES spectra at the cobalt, oxygen and sulfur edges recorded inside and outside a C14S island of approximately 15 nm height as measured by AFM. According to the model proposed above, this would correspond to at least three C14S–Co–C14S layers. Outside the island (green line) strong oxygen and cobalt signals are recorded, while only a faint signature of sulfur can be observed. These data are consistent with the migration towards the islands of surface-bound thiols during the growth process, partially exposing the cobalt surface to oxidation. When the measurement was done on top of an island (orange line), we observed that the signals of cobalt and oxygen were attenuated while the sulfur signal slightly increased. The escape depth of Auger electrons is only few nanometers, so the detector mostly collected the electrons originating from the island volume while signals coming from the underlying cobalt surface were strongly attenuated. The main conclusion obtained from the AES measurements is that the islands contain cobalt in addition to the sulfur of the alkanethiol molecules. The presence of cobalt and sulfur inside the islands is consistent with the structure proposed in Fig. 2.

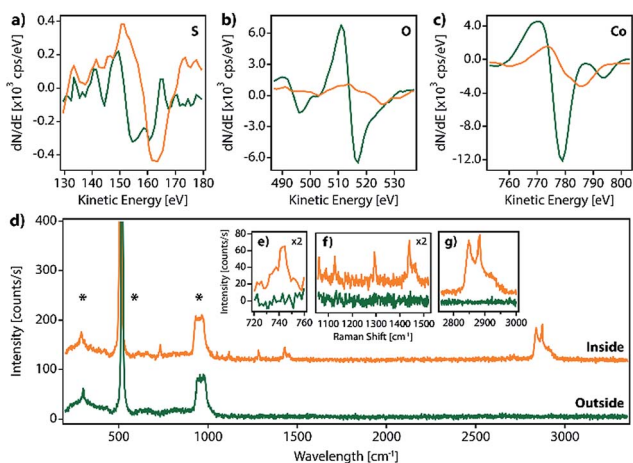


Fig. 5 (a–c) O(KLL), S(KLL) and Co(KLL) AES spectra measured inside (orange line) and outside (green lines) a 15 nm height Co–C14SH island. (d–g) Raman spectra measured inside (orange line) and outside (green lines) a 75 nm height Co–C14SH island. The peaks marked with * come from the silicon substrate.

Confocal Raman spectroscopy. Strong adventitious carbon signals were observed inside and outside the islands, hindering carbon edge interpretation *via* AES. Therefore, Raman spectroscopy measurements were carried out to shed light on that, as alkyl chains show characteristic Raman peaks. Once again, we compared the spectra recorded inside and outside the islands (Fig. 5d–g). Data recorded outside the island did not show any additional peaks compared to those of non-functionalized reference air-exposed cobalt samples. We have also run a series of measurements on gold surfaces functionalized with alkanethiols, but we did not observe any Raman signal, which suggests that our Raman setup is not sensitive enough to detect organic species at the monolayer level. Coming back to our samples, this does not mean that outside the islands the SAM is absent. From the data measured inside a 75 nm (21 layers) C14S island we observed a peak at 743 cm^{-1} (Fig. 5e) which we tentatively assigned to the twisting of the sulfur-carbon bond.⁴³ Additionally, in Fig. 5f and g, signals coming from the C–H vibrations are displayed: C–H stretching ($2849\text{--}2924\text{ cm}^{-1}$), CH₂ scissoring (1450 cm^{-1}) and C–C aliphatic chain vibrations ($1120\text{--}1290\text{ cm}^{-1}$). However, data measured inside the island showed no trace of unbound S–H groups at 2575 cm^{-1} .⁴³ The intense silicon substrate signals at 1000 cm^{-1} , 532 cm^{-1} and 350 cm^{-1} mask any possible signal related to the S–M bonds which should be expected below 400 cm^{-1} . These results are consistent with the scenario in which alkanethiol molecules self-assembled on the cobalt surface, migrated and accumulated in the form of island domains when exposed to air.

Additionally, in order to gain further insights on the island composition, we performed synchrotron X-ray photoemission electron microscopy (X-PEEM) experiments at CIRCE and HERMES beamlines, in ALBA and SOLEIL light sources, respectively.

Unfortunately, for such experiments the samples have to be exposed to 10^{-9} mbar pressure for several hours; as discussed before, this results in the complete removal of the LMAs from the surface, precluding a proper analysis.

Growth rate studies

In the previous section, we have proved the LMA nature of the spontaneously formed lamellar features by means of their topographic, structural and spectroscopic characterization. In this section, we will study the growth of the island domains as a function of time and also we will assess the role of the temperature and the atmosphere. For that, we proceeded to functionalize Co and Py surfaces with C18S, C16S and C14S inside a glovebox, and then we exposed the sample to air and monitored the change of the topography as a function of time for a $30 \times 30\ \mu\text{m}^2$ area using AFM. In general, although some variability was observed between experiments, equivalent assays revealed that the time needed to reach stable island domains is in between 14 and 18 hours (no significant variation in height or area is observed beyond this point) independently of the substrate (Co or Py) and chain length used ($n = 14, 16$ or 18). Fig. 6a and b represent the changes in coverage measured by



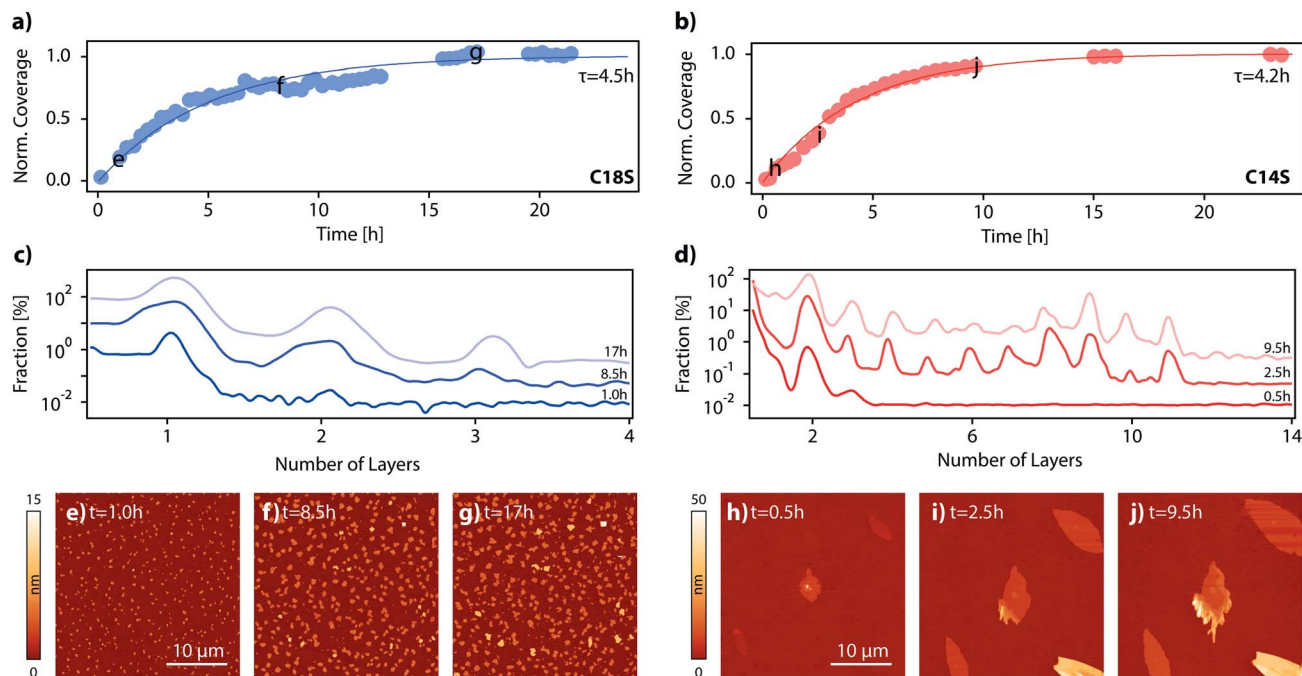


Fig. 6 (a) Co-C18S and (b) Co-C14S normalized coverage (NC) as a function of time; the solid line is a fitting of the data to the exponential function $NC = 1 - \exp(-t/\tau)$. (c and d) Layer distributions at three different times correspond to the points marked with letters in panels (a and b); 1 layer = 3.6 and 4.6 nm for C14S and C18S, respectively; 8.5 h, 17 h, 2.5 h and 9.5 h data have been shifted for clarity. (e-j) Topographic AFM images from which data in panels (c and d) have been obtained; the size of all images is $30 \times 30 \mu\text{m}^2$.

AFM during the growth of C14S and C18S islands on Co. In Fig. 6c and d some selected height distributions are shown. Some of the AFM images corresponding to the data displayed in Fig. 6a–d are reported in Fig. S7 and S8.† For the case of C18S, it is possible to observe that right after air exposure island domains started growing on the surface. We observed that, after the first hour, only domains of around 4.6 nm height (1 layer) are present (Fig. 6c), after 8.5 hours some domains with a height slightly above 9 nm (2 layers) appear, and finally at the end of the growth process, the height distribution reflects a small contribution of domains of 13.5 nm (3 layers).

For the case of C14S, it is clearly visible that after 17 hours no further evolution of the number of islands, their areas or their heights is observed. In this particular case, we observed a slightly faster growth ($\tau = 4.2$ h). The height distribution shows the presence of terraces of 7.2 nm (2 layers), since the very beginning (Fig. 6d). After around 2.5 h, higher steps can also be observed, reaching a maximum height of 40 nm (~ 11 layers) at the end of the growth process. AFM is a precise technique but limited to size acquisition, and quite time-consuming. This makes the imaging of large sample areas difficult during the very first seconds of air contact and over long periods of time. In order to improve our kinetic study, we took advantage of optical microscopy to take large area pictures in a matter of seconds, even at the expense of precise topographic information. This allowed us to precisely follow the growth process in its initial stages. We functionalized again a cobalt sample with C14S; we chose this sample because, as discussed above, the resulting island domains are bigger and thus their optical analysis is easier. The sample was exposed to

air and pictures were taken with an optical microscope every few minutes (Fig. S9–S12 and Video S2†). This is the first time that a kinetic measurement in real time of the growth of a lamellar 2D coordination polymer on a surface is reported.

Influence of the ambient conditions

It is well known that the crystal growth in bulk materials is influenced by various parameters such as temperature, concentration or the growth media used.⁴⁴ The temperature particularly influences the balance between the nucleation and growth steps. In order to determine the extension of the influence of this parameter on our system, we performed a series of experiments where three freshly functionalized Co-C14S samples were exposed to air at three different temperatures, 35 °C, 25 °C (room temperature) and 5 °C, and recorded optical images for all of them (Fig. S13†). At a first glance, it is possible to observe that an increase in temperature produces a smaller density of islands, but with bigger sizes. This result suggests that island domains grow following a nucleation and growth mechanism similar to that observed for other bulk solids in solution. Under ambient conditions, all surfaces are covered by a thin layer of water, whose dimensions depend on the nature of the surface, the ambient humidity and temperature conditions.^{45–47} To check if this water layer was playing any role in island domain formation, we designed an experiment in which we functionalized a set of two twin cobalt samples with C14S. We directly exposed one of the samples (Sample A) to air as a reference, whilst the second sample was transferred directly from the glovebox into a reaction chamber filled with dry air



(Sample B). After 16 hours, we checked both samples using optical microscopy (Fig. S14 and S15†) and left both of them reacting under ambient conditions for an additional 16 hours. After 16 hours of reaction under ambient conditions, island growth on Sample A had already finished, and no particular evolution was observed after 32 hours. For the case of Sample B, we also observed the presence of islands after 16 hours of reaction under dry air. However, when we further exposed the sample to ambient conditions for an additional 16 hours, we found that both the number of islands and their size had increased to values closer to those of Sample A. In conclusion, it seems that again island formation mimics the behavior observed in most bulk systems; although reactions can be carried out in the solid state, reaction rates in solution tend to be higher.

Conclusions

In this work we have developed a new approach for growing 2D coordination networks on solid surfaces under ambient conditions. The approach is illustrated through the growth of LMAs over functionalized ferromagnetic surfaces. These LMAs have so far been prepared in solution and successfully transferred onto solid supports.³⁵ Their preparation as thin films has been reported in very few cases.^{40,48,49} Furthermore, the direct or indirect real-time study of the formation of 2D layers of these structures has remained almost unexplored and has been based on bulk lamellar samples.^{27,50} However, during the revision process of our work, the formation and growth of multilayer motifs on copper with dodecanethiol has been just reported.⁵¹ In this article, we have presented the nucleation and evolution of 2D coordination polymer structures based on LMAs directly imaged by different microscopies. These lamellar structures spontaneously appear on Co and Py ferromagnetic surfaces, which have been functionalized with alkanethiol SAMs under an inert atmosphere, when they are exposed to air (Fig. 7). Although this process is reminiscent of the assembly of alkanethiol molecules over metallic surfaces, this method can be on the basis of a new self-assembly approach to grow 2D metal-organic networks on reactive metal surfaces at ambient pressure. In this case, oxygen triggers the oxidation of the metal surface, extracting metallic ions, which migrate along with the alkanethiol ligands to give rise to RS-M-RS multilayered crystalline domains, which grow over the SAM surface. The domains can be removed under UHV or through interaction with an AFM tip, highlighting the existence of weak interactions between adjacent layers. These findings show how weak vdW interactions are able to drive the rearrangement of alkanethiol molecular units that originally form part of a well-organized SAM, giving rise to new crystalline lamellar structures. However, despite the fact that the oxidation of the ferromagnetic surface is at the origin of the restructuration, the step-by-step nature of the process is still unclear and future theoretical calculations are expected to shed some light on it.

The accommodation and rearrangement of the lamellae runs over several hours until the final crystalline structures are reached. This has allowed us to monitor for the first time the

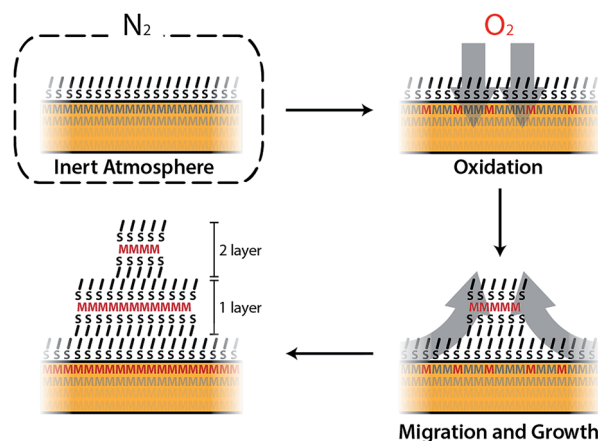


Fig. 7 Artistic representation showing the growth mechanism of a LMA directly on the surface. Alkanethiol samples are stable while kept under an inert atmosphere. When they are exposed to air oxygen diffuses into the surface, oxidizing part of the metal atoms. Oxidized atoms then coordinate to two neighboring thiol molecules to form a LMA bilayer and leave the SAM to build-up the developing overlayer island. The process goes on until all the metal surface is oxidized.

growth in real time of these 2D coordination polymers on surfaces. No solvent is required for the migration process and even when air humidity is suppressed, the growth process persists although the growing speed is decreased. Besides the whole process takes place at room temperature, and by increasing the temperature, a smaller density of larger islands can be obtained. The nature of the ferromagnetic substrate and the length of the alkyl chains determine the number, area and height of the resultant LMAs. Shorter chains (C14S) give rise to larger features, but in smaller numbers over the surface, while almost exclusively small single layer islands are obtained for the longest chains (C18S) with a higher coverage of the surface. As far as the substrate is concerned, we notice that, although the effect is weak, higher but smaller area structures in fewer numbers are usually observed for Py compared to Co. The easy growth of real 2D CPs with magnetic ions can become a platform to obtain metal and metal sulfide nanostructures, and also new 2D magnetic materials where M-S layers (M: Fe, Co or Ni) are embedded into a diamagnetic-isolating alkyl matrix. Moreover, this approach could be extended for the surface self-assembly of more complex metal-organic networks by changing the alkyl chain by other backbone skeletons. Finally, the ease and time scale of the growth process could be used to model surface/molecule interfacial processes in air.

Conflicts of interest

There are no conflicts of interest to declare.

Acknowledgements

We acknowledge the financial support from the European Union (COST Action MOLSPIN CA15128, FET-OPEN 2D-INK 664878, and ERC-2018-AdG 788222 Mol-2D), the Spanish



MINECO (MAT2017-89993-R co-financed by FEDER and Excellence Unit “María de Maeztu” MDM-2015-0538) and the Generalitat Valenciana (PROMETEO/2017/066). V. R.-G. thanks the Spanish MECO for a FPU predoctoral grant (FPU13/03203). We thank Diamond Light Source for access to beamline I07 (proposal number SI14922-1), which contributed to the results presented here, and Dr Thomas Arnold, Dr Jonathan Rawle and Dr Jacob Filik for their assistance in measuring and analyzing synchrotron XRD data; ALBA synchrotron for the beam time at the CIRCE beamline (proposal number 2016021560) and Dr Lucia Aballe and Dr Michael Foerster for their help; SOLEIL (proposal number 20160524 and 20170418) for provision of synchrotron radiation facilities and Rachid Belkhou and Stefan Stanescu for assistance in using HERMES beamline and finally Dr Lorenzo Calvo for Auger Electron Spectroscopy measurements and discussion about the obtained results.

Notes and references

- 1 A. Ulman, *Chem. Rev.*, 1996, **96**, 1533–1554.
- 2 B. Bhushan, in *Nanotribology and Nanomechanics*, Springer International Publishing, Cham, 5th edn, 2017, vol. 217, pp. 641–688.
- 3 S. Casalini, C. A. Bortolotti, F. Leonardi and F. Biscarini, *Chem. Soc. Rev.*, 2016, **46**, 40–71.
- 4 D. Mandler and I. Turyan, *Electroanalysis*, 1996, **8**, 207–213.
- 5 A. R. Bishop and I. Kaur, *Curr. Opin. Colloid Interface Sci.*, 1996, **1**, 127–136.
- 6 K. S. Mali, N. Pearce, S. de Feyter and N. R. Champness, *Chem. Soc. Rev.*, 2017, **46**, 2520–2542.
- 7 J. V. Barth, G. Costantini and K. Kern, *Nature*, 2005, **437**, 671–679.
- 8 R. Otero, J. M. Gallego, A. L. V. de Parga, N. Martín and R. Miranda, *Adv. Mater.*, 2011, **23**, 5148–5176.
- 9 L. Dong, Z. Gao and N. Lin, *Prog. Surf. Sci.*, 2016, **91**, 101–135.
- 10 S. Stepanow, M. Lingensfelder, A. Dmitriev, H. Spillmann, E. Delvigne, N. Lin, X. Deng, C. Cai, J. V. Barth and K. Kern, *Nat. Mater.*, 2004, **3**, 229–233.
- 11 T. R. Umbach, M. Bernien, C. F. Hermanns, A. Krüger, V. Sessi, I. Fernandez-Torrente, P. Stoll, J. I. Pascual, K. J. Franke and W. Kuch, *Phys. Rev. Lett.*, 2012, **109**, 267207–267215.
- 12 M. Galbiati, S. Delprat, M. Mattera, S. Mañas-Valero, A. Forment-Aliaga, S. Tatay, C. Deranlot, P. Seneor, R. Mattana and F. Petroff, *AIP Adv.*, 2015, **5**, 057131–057139.
- 13 K. S. Kumar, L. Jjiang and C. A. Nijhuis, *RSC Adv.*, 2017, **7**, 14544–14551.
- 14 M.-B. Martin, B. Dlubak, R. S. Weatherup, H. Yang, C. Deranlot, K. Bouzouane, F. Petroff, A. Anane, S. Hofmann, J. Robertson, A. Fert and P. Seneor, *ACS Nano*, 2014, **8**, 7890–7895.
- 15 S. Joo, K. Y. Jung, B. C. Lee, T.-S. Kim, K. H. Shin, M.-H. Jung, K. J. Rho, J.-H. Park, J. Hong and K. Rhie, *Appl. Phys. Lett.*, 2012, **100**, 172406–172414.
- 16 J. S. Moodera, E. F. Gallagher, K. Robinson and J. Nowak, *Appl. Phys. Lett.*, 1997, **70**, 3050.
- 17 L. Smardz, U. Köbler and W. Zinn, *J. Appl. Phys.*, 1992, **71**, 5199–5204.
- 18 R. K. Hart and J. K. Maurin, *Surf. Sci.*, 1970, **20**, 285–303.
- 19 L. Luo, Y. Kang, J. C. Yang and G. Zhou, *J. Appl. Phys.*, 2015, **117**, 065305–065310.
- 20 I. G. Dance, K. J. Fisher and R. Banda, *Inorg. Chem.*, 1991, **30**, 183–187.
- 21 H. G. Fijolek, J. R. Grohal and J. L. Sample, *Inorg. Chem.*, 1997, **36**, 622–628.
- 22 F. Bensebaa, T. H. Ellis, E. Kruus, R. Voicu and Y. Zhou, *Langmuir*, 1998, **14**, 6579–6587.
- 23 A. N. Parikh, S. D. Gillmor, J. D. Beers, K. M. Beardmore, R. W. Cutts and B. I. Swanson, *J. Phys. Chem. B*, 1999, **103**, 2850–2861.
- 24 A. A. Levchenko, C. K. Yee, A. N. Parikh and A. Navrotsky, *Chem. Mater.*, 2005, **17**, 5428–5438.
- 25 Z. Ye, L. P. de la Rama, M. Y. Efremov, J.-M. Zuo and L. H. Allen, *Dalton Trans.*, 2016, **45**, 18954–18966.
- 26 S.-H. Cha, J.-U. Kim, K.-H. Kim and J.-C. Lee, *Chem. Mater.*, 2007, **19**, 6297–6303.
- 27 H. Nie, M. Li, Y. Hao, X. Wang and S. X.-A. Zhang, *Chem. Sci.*, 2013, **4**, 1852–1857.
- 28 F. Bensebaa, T. H. Ellis and E. Kruus, *Can. J. Chem.*, 1998, **76**, 1654–1659.
- 29 P. Espinet and M. C. Lequerica, *Chem.-Eur. J.*, 1999, **5**, 1982–1986.
- 30 N. Sandhyarani and T. Pradeep, *J. Mater. Chem.*, 2001, **11**, 1294–1299.
- 31 F. G. Mann and D. Purdie, *J. Chem. Soc.*, 1935, 1549–1563.
- 32 P. John Thomas, A. Lavanya, V. Sabareesh and G. U. Kulkarni, *Proc.-Indian Acad. Sci., Chem. Sci.*, 2001, **113**, 611–619.
- 33 N. S. John, P. J. Thomas and G. U. Kulkarni, *J. Phys. Chem. B*, 2003, **107**, 11376–11381.
- 34 N. S. John, G. U. Kulkarni, A. Datta, S. K. Pati, F. Komori, G. Kavitha, C. Narayana and M. K. Sanyal, *J. Phys. Chem. C*, 2007, **111**, 1868–1870.
- 35 B. Busupalli, S. Kummara, G. Kumaraswamy and B. L. V. Prasad, *Chem. Mater.*, 2014, **26**, 3436–3442.
- 36 C. Tan, X. Cao, X.-J. Wu, Q. He, J. Yang, X. Zhang, J. Chen, W. Zhao, S. Han, G.-H. Nam, M. Sindoro and H. Zhang, *Chem. Rev.*, 2017, **117**, 6225–6331.
- 37 S. Manzeli, D. Ovchinnikov, D. Pasquier, O. V. Yazyev and A. Kis, *Nat. Rev. Mater.*, 2017, **2**, 17033–17115.
- 38 W. L. Bragg, *Proc. Cambridge Philos. Soc.*, 1913, **17**, 43–57.
- 39 *Handbook of Chemistry and Physics*, ed. W. M. Haynes, 84th edn, 2004.
- 40 J. T. Woodward, M. L. Walker, C. W. Meuse, D. J. Vanderah, G. E. Poirier and A. L. Plant, *Langmuir*, 2000, **16**, 5347–5353.
- 41 M. Xu, T. Liang, M. Shi and H. Chen, *Chem. Rev.*, 2013, **113**, 3766–3798.
- 42 D. Nečas and P. Klapetek, *Cent. Eur. J. Phys.*, 2012, **10**, 181–188.
- 43 M. A. Bryant and J. E. Pemberton, *J. Am. Chem. Soc.*, 1991, **113**, 8284–8293.



- 44 I. Sunagawa, *Crystals: Growth, Morphology and Perfection*, Cambridge University Press, 2005.
- 45 M. A. Henderson, *Surf. Sci. Rep.*, 2002, **46**, 1–308.
- 46 A. Verdager, G. M. Sacha, H. Bluhm and M. Salmeron, *Chem. Rev.*, 2006, **106**, 1478–1510.
- 47 S. Santos and A. Verdager, *Materials*, 2016, **9**, 182–216.
- 48 H. Keller, P. Simak, W. Schrepp and J. Dembowski, *Thin Solid Films*, 1994, **244**, 799–805.
- 49 L. Hu, L. P. de la Rama, M. Y. Efremov, Y. Anahory, F. Schiettekatte and L. H. Allen, *J. Am. Chem. Soc.*, 2011, **133**, 4367–4376.
- 50 H. Nie, M. Li, Y. Hao, X. Wang, S. Gao, P. Wang, B. Ju and S. X.-A. Zhang, *RSC Adv.*, 2014, **4**, 50521–50528.
- 51 D. S. Bergsman, T.-L. Liu, R. G. Closser, K. L. Nardi, N. Draeger, D. M. Hausmann and S. F. Bent, *Chem. Mater.*, 2018, **30**, 5694–5703.

