


 Cite this: *RSC Adv.*, 2020, 10, 39521

# Organ-on-a-chip: the next generation platform for risk assessment of radiobiology

 Yi Quan,<sup>†a</sup> Miao Sun,<sup>†\*b</sup> Zhaoyi Tan,<sup>\*a</sup> Jan C. T. Eijkel,<sup>c</sup> Albert van den Berg,<sup>id c</sup> Andries van der Meer<sup>id d</sup> and Yanbo Xie<sup>id p</sup>

Organ-on-a-chip devices have been widely used in biomedical science and technology, for example for experimental regenerative medicine and precision healthcare. The main advantage of organ-on-a-chip technology is the facility to build a specific human model that has functional responses on the level of organs or tissues, thereby avoiding the use of animal models, as well as greatly improving new drug discovery processes for personal healthcare. An emerging application domain for organs-on-chips is the study of internal irradiation for humans, which faces the challenges of the lack of a clear model for risk estimation of internal irradiation. We believe that radiobiology studies will benefit from organ-on-a-chip technology by building specific human organ/tissues *in vitro*. In this paper, we briefly reviewed the state-of-the-art in organ-on-a-chip research in different domains, and conclude with the challenges of radiobiology studies at internal low-dose irradiation. Organ-on-a-chip technology has the potential to significantly improve the radiobiology study as it can mimic the function of human organs or tissues, and here we summarize its potential benefits and possible breakthrough areas, as well as its limitations in internal low-dose radiation studies.

 Received 12th June 2020  
 Accepted 16th September 2020

DOI: 10.1039/d0ra05173j

[rsc.li/rsc-advances](http://rsc.li/rsc-advances)

## Introduction

Organ-on-a-chip systems are *in vitro* cell culture models in which the microenvironment of human organs or tissues is mimicked on artificial microstructures built on a microfluidic chip.<sup>1</sup> Organ-on-a-chip technology integrates concepts from microfabrication, chemical science, cell biology, medical science and biotechnologies, and is expected to have major applications in biomedical science,<sup>2</sup> therapy development,<sup>3</sup> drug discovery,<sup>4</sup> and regenerative medicine.<sup>5</sup> An increasing number of studies have demonstrated that organ-on-a-chip systems can be successfully applied in the aforementioned research scenarios. We believe organ-on-a-chip also has great potential in risk estimation of internal radiobiology studies, as organ-on-a-chip can provide human-specific, tissue-level and organ-level data *in vitro*. Despite this potential, only a few studies have focused on this application domain, as far as we know.<sup>6–9</sup> The exposure to low-dose internal irradiation is an important issue, since it is unavoidable in nature and in the

accidents of nuclear plants, as well as in radiation therapy. In this paper, we will briefly review the state-of-the-art in organ-on-a-chip studies, analyze the key points in low-dose internal radiobiology studies, and discuss the possible breakthroughs when applying organs-on-chips in radiobiology in the near future.

## Organ-on-a-chip

The concept of “organ-on-a-chip” as microfluidic *in vitro* cell culture systems that emulate the physiology of the key functional units of an organ, was established first by Huh *et al.*, in their publication of a “lung-on-a-chip” in 2010.<sup>10</sup> This field was then developing rapidly and organ-on-a-chip is becoming a popular technology for biological research, due to the high expectations of simulating key aspects of the human physiology environment and the potential for replacement of animal models. Applying organs-on-chips in drug development might save years for therapeutic compounds to enter clinical trials, because it would relieve the predominant reliance on animal tests to assess the kinetics, efficacy and safety of drug candidates.<sup>11</sup> Besides, culturing human cells on chips enables studies of pharmacokinetics in specific individuals.<sup>5</sup> Here, we will briefly summarize the state-of-the-art and possibilities for organ-chip technology in different applications areas (Fig. 1).

### Biological mechanism studies

Organ-on-a-chip technology enables studies of the structure and function of a specific organ, as well as the interactions

<sup>a</sup>Institute of Nuclear Physics and Chemistry, China Academy of Engineering Physics (CAEP), Mianyang, Sichuan 621000, China. E-mail: tanzhaoyi@caep.cn

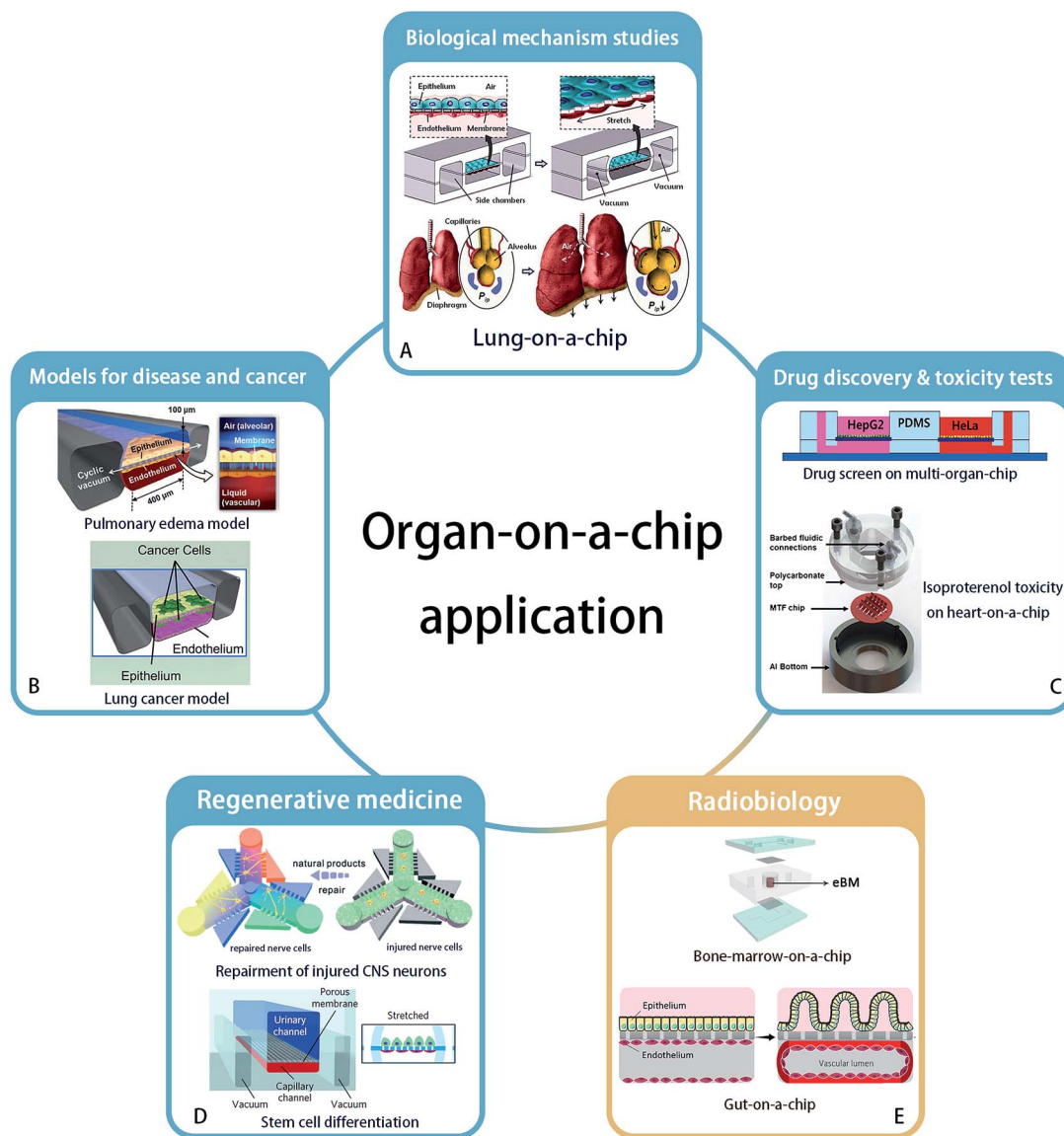
<sup>b</sup>Joint Laboratory of Nanofluidics and Interfaces, School of Physical and Technology, Northwestern Polytechnical University, Xi'an, Shaanxi 710072, China. E-mail: 615sunmiao@163.com

<sup>c</sup>BIOS, Lab on a Chip Group, MESA+ Institution for Nanotechnology, University of Twente, 7522 NB Enschede, The Netherlands

<sup>d</sup>Department of Applied Stem Cell Technologies, University of Twente, 7522 NB Enschede, The Netherlands

<sup>†</sup> These authors equally contributed to this work.





**Fig. 1** Application areas of organ-on-a-chip technology. (A) Biological mechanism – lung-on-a-chip. Reprinted with permission from ref. 10 (Copyright© 2010, American Association for the Advancement of Science). (B) Disease model – pulmonary edema and lung cancer model – could be established by organ-on-a-chip. Reprinted with permission from ref. 16 (Copyright© 2012, American Association for the Advancement of Science) and ref. 28 (Copyright© 2017, Cell Press) (C) organ-on-a-chip has ability to accomplish new drug discovery and toxicity tests. Reprinted with permission from ref. 37 (Copyright© 2017, John Wiley & Sons) and ref. 31 (Copyright© 2013, Royal Society of Chemistry) (D) regenerative medicine such as neuron recovery and stem cell differentiation. Reprinted with permission from ref. 37 (Copyright© 2018, Royal Society of Chemistry) and ref. 46 (Copyright© 2017, Springer Nature). And (E) the great potential in radiobiology studies is developing. Bone marrow-on-a-chip and gut-on-a-chip has been proved their strength. Drawn referring to ref. 9 and reprinted with permission from ref. 6 (Copyright ©2018, Springer Nature).

between organs.<sup>12</sup> For example, to confirm the regulating ability of Transforming Growth Factor (TGF)- $\beta$ 1 to a four-tissue/organ-system including liver, lung, kidney and adipose tissue, an elementary “human-on-a-chip” was reported by Zhang, *et al.*,<sup>13</sup> providing a possibility to mimic the real human microenvironment *in vitro*. Huh *et al.* built the first “organ-on-a-chip”, reconstructing the lung function with cyclic mechanical strains of the alveolar capillary interface, which led to an increased uptake of external substances into epithelial and endothelial cells and transportation of these substances to the

microvascular compartment, similar to how uptake takes place in a real lung alveolus.<sup>10</sup> A key example of the application of this system was shown by the increased absorption of nanoparticles when the lung alveolus interface was exposed to mechanical strain. Besides the reaction of organs and tissues to the external environment, the interactions between organs also can be studied. Sances *et al.* proved the auxiliary action of brain microvascular endothelial cells in the maturation of human neurons by co-culturing these two cell types on a chip.<sup>14</sup> In addition, a multi-organ-chip system established by Skardal and



his team members considered the inter-organ responses, to obtain a more accurate therapeutic reaction.<sup>15</sup>

### Models for disease and cancer

Organ-on-a-chip technology offers an excellent platform for disease modeling, like pulmonary edema,<sup>16</sup> protein-induced lung inflammation,<sup>17</sup> central nervous system disease<sup>18</sup> and type 2 diabetes.<sup>19</sup> For example, Benam *et al.* studied chronic obstructive pulmonary disease on a chip and developed the potentials to identify new biomarkers of the disease progression.<sup>20</sup> Another example is the application of blood–brain barrier (BBB)-on-chip systems to study the effect of inflammation on barrier function, and how to interfere with this process.<sup>21–24</sup>

As the second largest risk of death with a high global fatality rate,<sup>25</sup> tumor and cancer biology are a major area of interest to study in organ-on-a-chip systems. Based on the bioprinting technology, three-dimensional tumor model with spheroids' shape has been established *in vitro*.<sup>26,27</sup> Hassell, *et al.* recreated a lung-on-a-chip with non-small-cell lung cancer and observed the growth of tumor cells in a controlled microenvironment. They observed clinically relevant processes like tumor dormancy and the response to therapeutical tyrosine kinase inhibitors. Moreover, benefiting from the mechanical movement on the chip, the role of mechanical strain in affecting the sensitivity of cancer to therapeutics was revealed. It was found that signal transduction of epidermal growth factor receptor and MET protein kinase may affect the sensitivity.<sup>28</sup> In addition, organ-on-a-chip systems have also been applied in anti-cancer drug screens in a breast ductal carcinoma *in situ* model,<sup>29</sup> as well as in studies on the mechanism of metastasis of breast cancer cells by an *in vitro* 3D bone-on-a-chip model.<sup>30</sup>

### Drug discovery and toxicity tests

As organ-on-a-chip technology develops, models are increasingly being used for drug screening. A heart-on-a-chip model built by Agarwal *et al.* recapitulated a curative effect of isoproterenol.<sup>31</sup> Besides, an intestine-chip,<sup>32</sup> liver-chip,<sup>33</sup> kidney-chip<sup>34</sup> and many other types of organ-chips were used to test substance toxicity and to screen drugs. Furthermore, a multi-organ-chip platform integrating intestine, liver, skin and kidney was established by Maschmeyer, *et al.* to test repeated dose systemic toxicity.<sup>35</sup> Recently, multi-organ-chips were built to identify anti-angiogenic and anti-tumor drugs,<sup>36</sup> and to demonstrate anti-cancer activity of a flavonoid luteolin with integrated liver and cancer tissues.<sup>37</sup>

### Regenerative medicine

The reconstruction of organs can be of great use in regenerative medicine, which has a great potential to cure or replace directly damaged tissues and organs without the existing complications of using organ allografts.<sup>38</sup> Organ-on-a-chip technology provides a broad platform to understand key aspects of how various fabrication strategies affect cell viability and tissue function in the context of regenerative medicine. For example, a neuron recovery study was carried out on a microfluidic chip before the

emergence of the organs-on-chips concept.<sup>39</sup> Neurons were also cultured on a 3D chip to assess the response to medicine and the regeneration of injured central nervous system neurons.<sup>40</sup> With the help of 3D bioprinting technology,<sup>41</sup> a heart-chip model was printed and constructed with endothelialized human myocardium for regenerative medicine to substitute an unhealthy heart.<sup>42</sup>

Organ-on-a-chip systems allow stem cell culture and differentiation, and the targeted differentiation of stem cells has created high expectations on the regenerations of organs.<sup>43,44</sup> A microfluidic chip as a primary organ chip was designed by Park *et al.* to explore the different osteogenic capacity of human bone marrow- and adipose tissue-derived mesenchymal stem cells.<sup>45</sup> In another work, Musah *et al.* realized the differentiation of induced pluripotent stem cells to functional human podocytes, resulting in the regeneration of kidney glomerular-capillary-wall function on-chip.<sup>46</sup>

### Radiobiology

The application of organ-on-chip technology in radiobiology is still a newly developed area. In 2011, a microfluidic chip with liver tissue was used for the first time in this research field by Snyder *et al.* to confirm the liver tissue injury from space-like radiation and to evaluate treatment effects by the pro-drug amifostine.<sup>7</sup> Then Torisawa *et al.* validated the effects of  $\gamma$ -radiation on the hematopoietic function of bone marrow in a bone marrow-on-a-chip system. This system was used to confirm the beneficial effects of Granulocyte-Colony Stimulating Factor (G-CSF) and bactericidal/permeability-increasing protein (BPI) to recovery from radiation separately in 2014 and 2016.<sup>8,9</sup> Very recently, Jalili-Firoozinezhad *et al.* applied the “gut on chip” for radiobiology studies. Their results indicated that  $\gamma$ -ray radiation exacerbates the generation of reactive oxygen species, cytotoxicity, apoptosis and DNA fragmentation, and damages the tight junctions and integrity of the intestinal barrier, as well as blunts the villus-like morphology. In addition, this gut model proved that dimethylxaloylglycine (DMOG) may help to prevent the aforementioned damage caused by radiation.<sup>6</sup>

Overall, although the organ-on-a-chip technology has not been widely used in clinical studies, it showed success potentials in studies of disease mechanisms, drug screening and even experimental regeneration studies. Similar to its success in pharmacological studies, we think organs-on-chips will also become of great use in the field of radiobiology, particularly by enabling the development of protective therapies after radiation exposure and by stimulating the optimization of personal radiotherapy.

## Review of radiobiology studies

In the 1900s, it took a decade for people to realize the danger of radiation effects on any type of living being including humans, as exemplified by the application of radium in objects for everyday use.<sup>47</sup> Nowadays, understanding the bio-effects induced by radiation is still a critical question, although the



exposure to radiation in people's lives is limited to specific occasions, such as biomedical diagnosis, treatment and even including the leaking of nuclear power plants.

In this paper, we focus on the internal low-dose radiation and we discuss the opportunities of using organs-on-chips in radiobiology studies. Internal low-dose radiation is defined as the radiation from inside of the body when nuclides have been inhaled or ingested, as a consequence of which nuclides can exist in the body for long periods, producing persistent radiation damage to organs. Radiotherapy is another typical way in which radiation nuclides are introduced in the body. On the one side, the release of energetic photons, ions, electrons and the resulting radiolysis of water are helpful to kill cancer cells. On the other side, the side-effects of radiation therapy are clearly being seen, such as inducing salivary gland swelling and pain when the radioactive iodine targets thyroid gland for treating differentiated papillary and follicular cancers.<sup>48,49</sup> Still, the radiation doses are moderate or low in these scenarios.

The epidemiological studies demonstrated the deterministic effects of damage and diseases correlated to the dose absorbed. For example, the minimum detectable dose of radiation inducing leukemia and solid cancers are 100 and 200 mSv.<sup>50,51</sup> While, under the low dose domain (<100 mSv), the dose-response and disease relationship for doses below 100 mSv are not completely clear yet.<sup>52</sup> However, it unavoidable for us to be exposed to natural and artificial sources, like radionuclide in our food supply, medical diagnostics, clinical treatment and industrial radiography. Therefore, it is especially important to study the dose-response relationship of correlated diseases and their relevant biological mechanisms. Here we summarize some unsolved key issues in low-dose radiobiology studies.

### Linear non-threshold model of risk estimation

Risk estimation under low-dose radiation is extrapolated from a linear non-threshold (LNT) model, obtained from epidemiological data at doses higher than 100 mSv.<sup>52</sup> However, the LNT model encounters challenges at low-dose radiation due to the unclear dose-response relationships, as both adverse effects ("bystander" effects and genomic instability) and beneficial effects (adaptive effects and low dose-hypersensitive) were found to be induced by doses lower than 100 mSv.<sup>53-57</sup> Low-dose radiation induces bystander effects, in which the response of cells to radiation is greater than the volume that is actually irradiated; this effect may contribute to increase cancer risk of low dose radiation.<sup>57-59</sup> In contrast, radiation hormesis, represented as repair stimulation at low doses and repair inhibition at high doses, is considered to be a beneficial effect.<sup>60,61</sup> It includes adaptive protection response in mammalian cells after single or protracted exposures to low doses of X- or  $\gamma$ -radiation. Molecular studies demonstrated the relevant mechanism might be associated with the detection of DNA damage, subsequent transmission of DNA damage signals and activation of DNA repair pathways.<sup>62,63</sup> Adaptive effects can keep cells alive through preventing and repairing DNA damage or by removing damaged cells *via* apoptosis to reduce genomic instability and eliminate mutated cells.<sup>64,65</sup>

The current LNT model used in radiation protection assumes that the cellular response of low-dose radiation is linear with dose and the same as at the high dose. The mechanism of health risks related to low-dose radiation is not completely clear; as we can see several different models have been proposed as candidates for replacing the LNT model as shown in Fig. 2.

### Individual susceptibility

Various individual responses were continuously reported from the first decade of the 20th century,<sup>66</sup> which show significant variation in the response to radiotherapy. Individual differences in the radiosensitivity of human skin were found in breast cancer patients receiving radiotherapy because the tumor originated from different defections in genes.<sup>67</sup> A genotype dependent genomic instability was triggered by bystander effects after radiation of human lymphocytes.<sup>68</sup> Therefore, a biomarker used to distinguish individual radiosensitivity is helpful for optimizing the normal tissue tolerance dose in radiotherapy or an acceptable dose in radiation protection. Although, G2 chromosomal radio-sensitivity assay,<sup>69,70</sup> micronucleus (MN) yields<sup>71</sup> and DNA misrepair assays<sup>72</sup> are commonly used to analyze cancer proneness after radiation exposure, these indicators are also changed when the organism is under other toxicant stress. The integration of '-omics' approaches such as genomics, proteomics, metabolomics may facilitate the goal of understanding the variation between individuals in radio-susceptibility to cancer.<sup>73</sup>

### Linear energy transfer difference

Different sources of radiation generate different kinds of particles with different radiation effects. The energy absorption

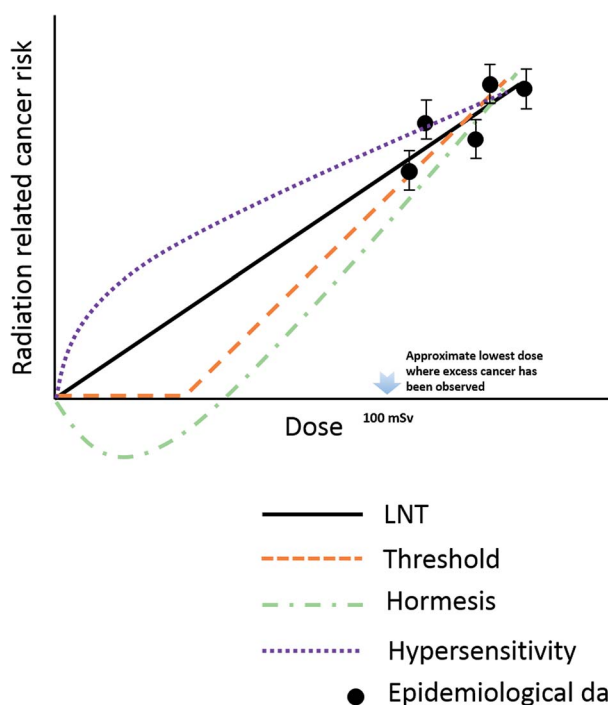
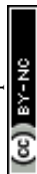


Fig. 2 Schematic representation of different model used to estimate radiation risks down to very low dose.



of radiation with low linear energy transfer (LET) such as X-rays or gamma-rays decreases exponentially with the penetration depth. In contrast, most of the high LET radiation deposits energies at the end of penetration depth forming a Bragg peak.<sup>74</sup> High LET radiation is likely to produce high ionization along its trajectories and induces complex and irreparable clustered DNA damage.<sup>75,76</sup> The foci levels of the phosphorylated histone, gamma-H2AX, a marker of DNA double-stranded breaks (DSB), remain significantly higher in  $\alpha$ -irradiated cells than in gamma-irradiated cells,<sup>77</sup> since the repair of DSB is inhibited as a function of LET (up to  $200 \text{ keV } \mu\text{m}^{-1}$ ). The cellular response to genetic damage shows differences between high-LET and low-LET radiation, for instance the Activating Transcription Factor 3 (ATF3) was upregulated and remained at a high level only in a group exposed to high-LET irradiation.<sup>78</sup> Theoretical studies also point to the same conclusion of the differences between high and low radiation damage to molecules.<sup>79</sup> However, the prediction of radiation effects on large scale (such as cells, tissues, organs) and the associated temporal evolution is a major challenge for theoretical studies.

### Internal exposure

Most of the exposure to low-dose radiation is internal, which may cause serious health problems. As reported, excess of childhood leukaemia was found in the Cumbrian coastal village nearby the Sellafield nuclear installations.<sup>80</sup> An increased risk of leukaemia and liver cancer were manifested in patients who were injected with medium Thorotrast containing <sup>232</sup>Th.<sup>81</sup> Besides the ionizing effects due to the particle emitted from radionuclide, the chemical properties of the specific radionuclide also contribute to the damage effects of organisms. Lanthanum, which has a similar chemical characteristic of the radionuclide actinide, but no radioactivity, can impair memory and learning ability *via* altering DNA concentration, protein/DNA ratios and inhibition to activities of antioxidant enzymes in the brain.<sup>82,83</sup> To acquire the health risk of radionuclide, it is essential to identify the metabolism, translocation of radionuclide between tissues and the underlying mechanism related to its dysfunction after it is absorbed by human body. However, non-human organisms are commonly and directly used as models to study the metabolism of radionuclides. For example, in risk estimation of inhalation of uranium, animal models do present with numbers of cancers per radiation dose that is comparable to the rates in human beings, but they have different preferential cancer occurrence for local sites.<sup>84</sup> The difference might be attributed to the different distribution of doses in the lung airways because of the structural differences in the lungs of human *versus*, for example, rat.<sup>85–87</sup> Recently, to overcome the challenge of species differences when using animal models, organs-on-chips have emerged as a new platform to assay radio-biological effects, as we discussed above. Moreover, as the effective doses in tissues are difficult to be measured directly in live organs, it is not easy to build an precise model to estimate the dose–response relationships for internal exposure. Thus, it is critical, but also is a challenge to clearly understand the risk of internal exposure in low-dose radiation-induced bio-effects.

### Challenges in radiobiology studies

Although the safety of low-dose radiation has been studied for decades, many important questions still remain unanswered. The major challenges in the risk estimation are summarized below, to establish a deep insight into the response of cell, tissue, organ and individuals to ionizing irradiation, based on the current methods of *in vitro* cellular experiments and *in vivo* non-human models.

**The environment of cell culture.** Cell cultured in multiwell plates, flasks and Petri dishes is standard biotechnology. However, compared to traditional 2D culture, 3D cell cultures help to preserve normal cell function and lead to suppression of transformed phenotypes.<sup>88,89</sup> As an example, chondrocytes cultured in 3D collagen gels showed greater suppression of collagen type I (COL1) and retention of collagen type II (COL2) than those cultured in monolayers.<sup>90</sup> Analogously, 3D collagen sponge cultures with medium perfusion increased the viability of the GPIa stromal cell line.<sup>91</sup> Such differences induced by cell culture conditions can also be observed in the cellular response to ionizing radiation. The apoptosis of human mammary epithelial cells was four times lower in 3D cultures *versus* 2D cultures after the same dose of X-ray irradiation,<sup>92</sup> complex DNA lesions induced by iron particles were more irreparable in 3D cultures,<sup>93</sup> and 3D cultured cells had a higher mutation frequency than 2D cultured samples when irradiated by iron charged particles at all radiation doses (from 0.1 to 2 Gy).<sup>94</sup> These significant differences caused by the mode of cell culturing illustrates the importance of building *in vitro* models that can more effectively mimic the microenvironment of tissues and organs for radiobiology studies.

**Lack of data at low-dose radiation.** The major object of epidemiological study on the dose–response for cancer induced by ionizing irradiation are the survivors of the Second World War, who were exposed to intermediate or high dose.<sup>95</sup> These studies clearly show a positive correlation of dose and carcinogenesis in high-dose radiation (Fig. 2). However, this data is not applicable for the estimation of the effects of low-dose radiation, as the sparse loss of cells and repair of cells, do no longer follow the same linear, deterministic trend. The lack of plenteous data on the effects of low-dose radiation from human poses a barrier for the design of clear predictive mathematical models.

**Species differences.** Non-human organisms are the most widely used models for investigating the underlying biological mechanisms and for estimating the health risk of low-dose radiation.<sup>96</sup> However, the differences between species is a barrier for the extrapolation of metabolic data from non-human animal models to humans,<sup>97</sup> which might induce errors in the specific risk estimation for humans. As for internal exposure, the solubility and speciation of radionuclides such as uranium changes significantly depending on the composition of the biological fluid (such as ionic strength and pH),<sup>98</sup> which are different among species. This is important, because the speciation of a radionuclide directly influences its distribution in target tissues.<sup>99</sup> Therefore, the different microenvironment parameters between human and animals might influence the



speciation and distribution of radionuclides, and then result in a variation of toxicity.

## Discussions and conclusions

### Benefits from organ-on-chip

The emerging of organ-on-a-chip technologies provides new platforms for radiobiology studies, which can be very useful for new drug discovery and might also be a possible solution in studies of the effects of internal exposure with low dose. This latter application domain is possibly even more helpful than the new drug discoveries, since radiation experiments cannot be performed directly in humans, in contrast to the clinical testing of drug candidates. Below we summarize several advantages of using organ-on-chip technology in studying radiobiology. A comparison of features between traditional methods and organ-on-a-chip in radiobiology studies is summarized in Table 1.

#### Mimicking the micro-environment of tissue and organs.

Compared to traditional 2D cell culturing, organ-on-a-chip systems allow the controlled co-culture of different cells to mimic various structures and functions of tissues and organs, such as blood–brain barrier, lung and heart.<sup>10,100,101</sup> By mimicking the microenvironment of cells in terms of physical and chemical signals, organs-on-chips allow cells to maintain specific tissue characteristics, which might be modified in traditional 2D cell culture.

**Avoidance of using animal models.** Organs-on-chips can directly culture human cells for radiobiology studies, avoiding the use of animals and the inherent species barriers discussed above. The species-to-species variations in genetic expression profiles such as transporter proteins are expected to be avoided.<sup>97</sup>

**Personal-precision estimations.** The bio-effects such as oncogenesis upon exposure to low-dose radiation are complex and dependent on the dose, rate of radiation, length of exposure, age, susceptibility of organs for malignant transformation after irradiation, and so on.<sup>95,102</sup> These factors might induce variation in the response to low-dose radiation, which need to be understood in order to optimize the LNT model in the low-dose radiation regime. Besides, a meta-analysis of a systematic data search demonstrated low dose radiation indeed increases breast cancer risk among high-risk women such as BRCA1/2 mutation carriers.<sup>103</sup> The engineering of personal organ-on-chip models will also be helpful in the development of personalized radiotherapy treatments.

**High level of integration and *in vivo* characterization.** As known, organ-on-chip technology uses similar microfluidic systems as is used in the field of lab-on-a-chip. This offers the possibility of the direct integration of organ-on-chip cell culture systems with lab-on-a-chip systems that allow physiochemical characterization. Optical, chemical, biological and electrochemical information of cells can be derived inline next to the radiation chamber, possibly providing a way of studying the kinetics of radionuclides and a high temporal resolution in tracking the mechanism of radiation disease in tissues.<sup>101</sup> The low-dose radiation may kill some essential cells inducing severe diseases in embryos, which is currently not detectable. However, with the help of organ-on-chips, early embryos and stem cell-derived embryonic tissues can be cultured and radiation disease can be studied.<sup>16,104</sup>

### Potential and limitations

As organs-on-chips can provide a unique platform for the study of radiobiology, we now list some key points of the potential

Table 1 Comparison of features between traditional methods and organ-on-a-chip in radiobiology studies

Features	Traditional method		
	2D culture <i>in vitro</i>	Animal model	Organ-on-a-chip
Advantages	Mimicking the micro-environment of tissues and organs	No	Yes
	Internal kinetics and distribution of the radionuclide in tissue and organs	Limited	Limited
	Personal radiosensitivity and radiotherapy	Limited	No
Limitations	Data availability for human health risk estimation by radiations	Limited. Cellular property varies after long culture <i>in vitro</i>	Limited. Species differences barrier its direct application
	Study on chronic diseases induced by internal radionuclide	No	Yes
	Investigation on cognitive impairment	No	Yes



impact these systems may have in the research on low-dose radiobiology.

**The internal kinetics and distribution of the radionuclide in tissue and organs.** As described above, the current studies on the dose–response relationship of internal radiation rely on the metabolism and retention of radionuclide in tissue. Since there is no clear knowledge of the kinetics of radionuclides in humans, it is difficult to accurately calculate the effective doses.

The migration and metabolism of radioactive elements in tissues and organs is an important issue that determines where the radionuclide accumulates and acts after ingested by the body. The characterization of the dynamic migration is a challenge, however it can possibly be done by multi-organ-chip and body-on-chip technology. By using biomarkers or other visualizing techniques, it may be possible to perform characterization of the migration of radionuclides based on their temporal distribution in various artificial tissues/organs. A clear model of the metabolism/migration of radionuclides is also crucial to calculate the effective dose in tissues and organs and predict the morbidity risk. The accuracy of mimicking the internal micro-environment will be important, which might directly determine the metabolism of radioactive elements and the resulting bio-effects.

**Personal health risk estimation by radiations.** The radiation effects on the individual person are influenced by the age, gender, and genetic background, so studying the individual radiobiological effects is of significance.<sup>105–107</sup> For example, it can be used to optimize the dose of radiotherapy or radiation diagnosis to reduce the risk of subsequent malignant neoplasms.

Organs-on-chips enable the culture of primary cells originated from persons or specific group of people, to perform studies of personal damage response. This is not only valuable for understanding the mechanisms of how low-dose radiation induces bio-effects, but could also be used to improve the personal chemotherapies. Judging the level of radiation damage on the chip, and the correlation between cellular responses in the chip to the real organs are technical key points. Biomarkers,<sup>10</sup> genomic analysis<sup>108</sup> and physiological responses<sup>109</sup> can be helpful for the analysis of radiation damage, which can be integrated in the chip.

**Chronic diseases and complex systems are not recommended.** It is known from their application in disease modeling and drug research that organs-on-chips are currently not suitable to study long-term effects, in which a disease may progress for years. Typical culture times for organs-on-chips are currently limited to weeks,<sup>35</sup> which is not enough to study the chronic diseases induced by low-dose radiation. The chronic diseases induced by low-dose radiation, such as heart disease and neoplasms, are thus not recommended to be investigated in organ-on-chip systems. In addition, as we described above, low-dose radiation may induce cognitive impairment, which can currently not be studied in organ-on-a-chip systems. However, the physical measurement of neuronal activity may possibly be investigated in the presence of radiation.

Organ-on-a-chip technology has found successful application in multiple research fields. We strongly believe it can also

provide unique and innovative tools for radiobiology studies, based on its mimicry of human organ functions, its potential for microfluidic integration and the compatibility with multiple endpoint assays, thereby paving the way for the next generation of precision radiobiology studies.

## Conflicts of interest

There are no conflicts to declare.

## Acknowledgements

We acknowledge the support from Analytics and Testing Centre in NPU and financial support from NSFC (Grant No. U1730133, U1732143), and the Fundamental Research Funds for the Central Universities (Grant No. 3102017jc01001), and the Presidential Funds of China Academy of Engineering Physics (Grant No. 201501001).

## References

- 1 Y. Ma, M. Lin, G. Huang, Y. Li, S. Wang, G. Bai, T. J. Lu and F. Xu, *Adv. Mater.*, 2018, **30**, 1705911.
- 2 D. E. Ingber, *Cell*, 2016, **164**, 1105–1109.
- 3 C. Luni, E. Serena and N. Elvassore, *Curr. Opin. Biotechnol.*, 2014, **25**, 45–50.
- 4 A. Polini, L. Prodanov, N. S. Bhise, V. Manoharan, M. R. Dokmeci and A. Khademhosseini, *Expert Opin. Drug Discovery*, 2014, **9**, 335–352.
- 5 T. Takebe, B. Zhang and M. Radisic, *Cell Stem Cell*, 2017, **21**, 297–300.
- 6 S. Jalili-Firoozinezhad, R. Prantil-Baun, A. Jiang, R. Potla, T. Mammoto, J. C. Weaver, T. C. Ferrante, H. J. Kim, J. M. S. Cabral, O. Levy and D. E. Ingber, *Cell Death Dis.*, 2018, **9**, 223.
- 7 J. E. Snyder, Q. Hamid, C. Wang, R. Chang, K. Emami, H. Wu and W. Sun, *Biofabrication*, 2011, **3**, 034112.
- 8 Y. S. Torisawa, C. S. Spina, T. Mammoto, A. Mammoto, J. C. Weaver, T. Tat, J. J. Collins and D. E. Ingber, *Nat. Methods*, 2014, **11**, 663.
- 9 Y. S. Torisawa, T. Mammoto, E. Jiang, A. Jiang, A. Mammoto, A. L. Watters, A. Bahinski and D. E. Ingber, *Tissue Eng., Part C*, 2016, **22**, 509–515.
- 10 D. Huh, B. D. Matthews, A. Mammoto, M. Montoya-Zavala, H. Y. Hsin and D. E. Ingber, *Science*, 2010, **328**, 1662–1668.
- 11 H. Nau, *Environ. Health Perspect.*, 1986, 113–129.
- 12 M. Nikolic, T. Sustersic and N. Filipovic, *Front. Bioeng. Biotechnol.*, 2018, **6**, 120.
- 13 C. Zhang, Z. Zhao, N. A. Abdul Rahim, D. van Noort and H. Yu, *Lab Chip*, 2009, **9**, 3185–3192.
- 14 S. Sances, R. Ho, G. Vatine, D. West, A. Laperle, A. Meyer, M. Godoy, P. S. Kay, B. Mandefro, S. Hatata, C. Hinojosa, N. Wen, D. Sareen, G. A. Hamilton and C. N. Svendsen, *Stem Cell Rep.*, 2018, **10**, 1222–1236.
- 15 A. Skardal, S. V. Murphy, M. Devarasetty, I. Mead, H.-W. Kang, Y.-J. Seol, Y. Shrike Zhang, S.-R. Shin, L. Zhao, J. Aleman, A. R. Hall, T. D. Shupe, A. Kleensang,



- M. R. Dokmeci, S. Jin Lee, J. D. Jackson, J. J. Yoo, T. Hartung, A. Khademhosseini, S. Soker, C. E. Bishop and A. Atala, *Sci. Rep.*, 2017, 7, 8837.
- 16 D. Huh, D. C. Leslie, B. D. Matthews, J. P. Fraser, S. Jurek, G. A. Hamilton, K. S. Thorneloe, M. A. McAlexander and D. E. Ingber, *Sci. Transl. Med.*, 2012, 4, 159ra147.
- 17 T. H. Punde, W. H. Wu, P. C. Lien, Y. L. Chang, P. H. Kuo, M. D. T. Chang, K. Y. Lee, C. D. Huang, H. P. Kuo, Y. F. Chan, P. C. Shih and C. H. Liu, *Integr. Biol.*, 2015, 7, 162–169.
- 18 Y. Yi, J. Park, J. Lim, C. J. Lee and S. H. Lee, *Trends Biotechnol.*, 2015, 33, 762–776.
- 19 S. Bauer, C. Wennberg Huld, K. P. Kanebratt, I. Durieux, D. Gunne, S. Andersson, L. Ewart, W. G. Haynes, I. Maschmeyer, A. Winter, C. Ämmälä, U. Marx and T. B. Andersson, *Sci. Rep.*, 2017, 7, 14620.
- 20 K. H. Benam, R. Villenave, C. Lucchesi, A. Varone, C. Hubeau, H. H. Lee, S. E. Alves, M. Salmon, T. C. Ferrante, J. C. Weaver, A. Bahinski, G. A. Hamilton and D. E. Ingber, *Nat. Methods*, 2015, 13, 151.
- 21 Y. B. Arik, M. W. v. d. Helm, M. Odijk, L. I. Segerink, R. Passier, A. v. d. Berg and A. D. v. d. Meer, *Biomicrofluidics*, 2018, 12, 042218.
- 22 J. A. Brown, S. G. Codreanu, M. Shi, S. D. Sherrod, D. A. Markov, M. D. Neely, C. M. Britt, O. S. Hoillett, R. S. Reiserer, P. C. Samson, L. J. McCawley, D. J. Webb, A. B. Bowman, J. A. McLean and J. P. Wiksw, *J. Neuroinflammation*, 2016, 13, 306.
- 23 L. M. Griep, F. Wolbers, B. de Wagenaar, P. M. ter Braak, B. B. Weksler, I. A. Romero, P. O. Couraud, I. Vermes, A. D. van der Meer and A. van den Berg, *Biomed. Microdevices*, 2013, 15, 145–150.
- 24 A. Herland, A. D. van der Meer, E. A. FitzGerald, T.-E. Park, J. J. F. Sleeboom and D. E. Ingber, *PLoS One*, 2016, 11, e0150360.
- 25 C. Fitzmaurice, C. Allen, R. M. Barber, L. Barregard, Z. A. Bhutta and H. Brenner, *JAMA Oncol.*, 2017, 3, 524–548.
- 26 Y. Fan, N. G. Avci, D. T. Nguyen, A. Dragomir, Y. M. Akay, F. Xu and M. Akay, *IEEE J. Transl. Eng. Health Med.*, 2015, 3, 1–8.
- 27 K. Ling, G. Huang, J. Liu, X. Zhang, Y. Ma, T. Lu and F. Xu, *Engineering*, 2015, 1, 269–274.
- 28 B. A. Hassell, G. Goyal, E. Lee, A. Sontheimer-Phelps, O. Levy, C. S. Chen and D. E. Ingber, *Cell Rep.*, 2017, 21, 508–516.
- 29 Y. Choi, E. Hyun, J. Seo, C. Blundell, H. C. Kim, E. Lee, S. H. Lee, A. Moon, W. K. Moon and D. Huh, *Lab Chip*, 2015, 15, 3350–3357.
- 30 S. Hao, L. Ha, G. Cheng, Y. Wan, Y. Xia, D. M. Sosnoski, A. M. Mastro and S. Y. Zheng, *Small*, 2018, 14, 1702787.
- 31 A. Agarwal, J. A. Goss, A. Cho, M. L. McCain and K. K. Parker, *Lab Chip*, 2013, 13, 3599–3608.
- 32 A. Bein, W. Shin, S. Jalili-Firoozinezhad, M. H. Park, A. Sontheimer-Phelps, A. Tovaglieri, A. Chalkiadaki, H. J. Kim and D. E. Ingber, *Cell. Mol. Gastroenterol. Hepatol.*, 2018, 5, 659–668.
- 33 E. M. Materne, A. G. Tonevitsky and U. Marx, *Lab Chip*, 2013, 13, 3481–3495.
- 34 K. J. Jang, A. P. Mehr, G. A. Hamilton, L. A. McPartlin, S. Chung, K. Y. Suh and D. E. Ingber, *Integr. Biol.*, 2013, 5, 1119–1129.
- 35 I. Maschmeyer, A. K. Lorenz, K. Schimek, T. Hasenberg, A. P. Ramme, J. Hübner, M. Lindner, C. Drewell, S. Bauer, A. Thomas, N. S. Sambo, F. Sonntag, R. Lauster and U. Marx, *Lab Chip*, 2015, 15, 2688–2699.
- 36 D. T. T. Phan, X. Wang, B. M. Craver, A. Sobrino, D. Zhao, J. C. Chen, L. Y. N. Lee, S. C. George, A. P. Lee and C. C. W. Hughes, *Lab Chip*, 2017, 17, 511–520.
- 37 H. Lee, D. S. Kim, S. K. Ha, I. Choi, J. M. Lee and J. H. Sung, *Biotechnol. Bioeng.*, 2017, 114, 432–443.
- 38 A. S. Mao and D. J. Mooney, *Proc. Natl. Acad. Sci. U. S. A.*, 2015, 112, 14452–14459.
- 39 S. X. Guo, F. Bourgeois, T. Chokshi, N. J. Durr, M. A. Hilliard, N. Chronis and A. Ben-Yakar, *Nat. Methods*, 2008, 5, 531.
- 40 Y. Tang, Q. F. Qiu, F. L. Zhang, M. Xie and W. H. Huang, *Lab Chip*, 2018, 18, 971–978.
- 41 G. Zhao, X. Zhang, T. J. Lu and F. Xu, *Adv. Funct. Mater.*, 2015, 25, 5726–5738.
- 42 Y. S. Zhang, A. Arneri, S. Bersini, S.-R. Shin, K. Zhu, Z. Goli-Malekabadi, J. Aleman, C. Colosi, F. Busignani, V. Dell'Erba, C. Bishop, T. Shupe, D. Demarchi, M. Moretti, M. Rasponi, M. R. Dokmeci, A. Atala and A. Khademhosseini, *Biomaterials*, 2016, 110, 45–59.
- 43 Y. L. Han, S. Wang, X. Zhang, Y. Li, G. Huang, H. Qi, B. Pingguan-Murphy, Y. Li, T. J. Lu and F. Xu, *Drug Discovery Today*, 2014, 19, 763–773.
- 44 S. Naskar, V. Kumaran and B. Basu, *Regener. Eng. Transl. Med.*, 2019, 5, 99–127.
- 45 S. H. Park, W. Y. Sim, B. H. Min, S. S. Yang, A. Khademhosseini and D. L. Kaplan, *PLoS One*, 2012, 7, e46689.
- 46 S. Musah, A. Mammoto, T. C. Ferrante, S. S. F. Jeanty, M. Hirano-Kobayashi, T. Mammoto, K. Roberts, S. Chung, R. Novak, M. Ingram, T. Fatanat-Didar, S. Koshy, J. C. Weaver, G. M. Church and D. E. Ingber, *Nat. Biomed. Eng.*, 2017, 1, 0069.
- 47 J. Prisco, *Radium Girls: The dark times of luminous watches*, <https://edition.cnn.com/style/article/radium-girls-radioactive-paint/index.html>.
- 48 G. Sunavala-Dossabhoy, *Oral Dis.*, 2018, 24, 198–201.
- 49 C. Alexander, J. B. Bader, A. Schaefer, C. Finke and C. Kirsch, *J. Nucl. Med.*, 1998, 39, 1551–1554.
- 50 J. D. Mathews, A. V. Forsythe, Z. Brady, M. W. Butler, S. K. Goergen, G. B. Byrnes, G. G. Giles, A. B. Wallace, P. R. Anderson, T. A. Guiver, P. McGale, T. M. Cain, J. G. Dowty, A. C. Bickerstaffe and S. C. Darby, *BMJ [Br. Med. J.]*, 2013, 346, f2360.
- 51 M. S. Pearce, J. A. Salotti, M. P. Little, K. McHugh, C. Lee, K. P. Kim, N. L. Howe, C. M. Ronckers, P. Rajaraman, A. W. Craft, L. Parker and A. Berrington de González, *Lancet*, 2012, 380, 499–505.
- 52 J. D. Boice, *Int. J. Radiat. Biol.*, 2017, 93, 1079–1092.





- 53 L. Cai and S. Z. Liu, *Int. J. Radiat. Biol.*, 1990, **58**, 187–194.
- 54 M. C. Joiner, B. Marples, P. Lambin, S. C. Short and I. Turesson, *Int. J. Radiat. Oncol., Biol., Phys.*, 2001, **49**, 379–389.
- 55 W. F. Morgan, *Radiat. Res.*, 2003, **159**, 567–580.
- 56 W. F. Morgan, *Radiat. Res.*, 2003, **159**, 581–596.
- 57 C. B. Seymour and C. Mothersill, *Nat. Rev. Cancer*, 2004, **4**, 158.
- 58 S. Bright and M. Kadhim, *Int. J. Radiat. Biol.*, 2018, **94**, 727–736.
- 59 W. F. Morgan and M. B. Sowa, *Mutat. Res.*, 2007, **616**, 159–164.
- 60 B. R. Scott, *J. Cell Commun. Signal.*, 2014, **8**, 341–352.
- 61 E. J. Calabrese and L. A. Baldwin, *Annu. Rev. Pharmacol. Toxicol.*, 2003, **43**, 175–197.
- 62 F. R. Tang and W. K. Loke, *Int. J. Radiat. Biol.*, 2015, **91**, 13–27.
- 63 C. J. Bakkenist and M. B. Kastan, *Nature*, 2003, **421**, 499.
- 64 G. A. R. Laura Torres Royo, M. Á. Pianetta and M. Arenas Prat, *Rep. Pract. Oncol. Radiother.*, 2020, **25**, 250–254.
- 65 L. E. Feinendegen, *Br. J. Radiol.*, 2005, **78**, 3–7.
- 66 N. Foray, C. Colin and M. Bourguignon, *Radiology*, 2012, **264**, 627–631.
- 67 S. L. Tucker, I. Turesson and H. D. Thames, *Eur. J. Cancer*, 1992, **28**, 1783–1791.
- 68 R. L. Munira, A. Kadhim, S. R. Moore, D. A. Macdonald, K. L. Chapman, G. Patel and K. M. Prise, *Mutat. Res.*, 2010, **688**, 91–94.
- 69 K. Baria, C. Warren, S. A. Roberts, C. M. West and D. Scott, *Br. J. Cancer*, 2001, **84**, 892.
- 70 A. C. Riches, P. E. Bryant, C. M. Steel, A. Gleig, A. J. Robertson, P. E. Preece and A. M. Thompson, *Br. J. Cancer*, 2001, **85**, 1157.
- 71 D. Scott, J. B. P. Barber, E. L. Levine, W. Burrill and S. A. Roberts, *Br. J. Cancer*, 1998, **77**, 614.
- 72 P. A. Jeggo and M. Löbrich, *Oncogene*, 2007, **26**, 7717.
- 73 C. Herskind, C. J. Talbot, S. L. Kerns, M. R. Veldwijk, B. S. Rosenstein and C. M. L. West, *Cancer Lett.*, 2016, **382**, 95–109.
- 74 D. Schulz-Ertner, O. Jäkel and W. Schlegel, *Semin. Radiat. Oncol.*, 2006, **16**, 249–259.
- 75 S. Timm, Y. Lorat, B. Jakob, G. Taucher-Scholz and C. E. Rübe, *Radiother. Oncol.*, 2018, **129**, 600–610.
- 76 M. Hada and A. G. Georgakilas, *J. Radiat. Res.*, 2008, **49**, 203–210.
- 77 E. L. Leatherbarrow, J. V. Harper, F. A. Cucinotta and P. O'Neill, *Int. J. Radiat. Biol.*, 2006, **82**, 111–118.
- 78 N. Hamada, T. Imaoka, S. i. Masunaga, T. Ogata, R. Okayasu, A. Takahashi, T. A. Kato, Y. Kobayashi, T. Ohnishi, K. Ono, Y. Shimada and T. Teshima, *J. Radiat. Res.*, 2010, **51**, 365–383.
- 79 W. Friedland, M. Dingfelder, P. Kundrát and P. Jacob, *Mutat. Res.*, 2011, **711**, 28–40.
- 80 W. Richard, *J. Labelled Compd. Radiopharm.*, 2007, **50**, 388–391.
- 81 Y. Ishikawa, I. Wada and M. Fukumoto, *Int. Congr. Ser.*, 2002, **1236**, 191–194.
- 82 L. Feng, H. Xiao, X. He, Z. Li, F. Li, N. Liu, Z. Chai, Y. Zhao and Z. Zhang, *Neurotoxicol. Teratol.*, 2006, **28**, 119–124.
- 83 X. He, Z. Zhang, H. Zhang, Y. Zhao and Z. Chai, *Toxicol. Sci.*, 2008, **103**, 354–361.
- 84 R. Winkler-Heil, M. Hussain and W. Hofmann, *Radiat. Environ. Biophys.*, 2015, **54**, 225.
- 85 L. Koblinger, *Phys. Med. Biol.*, 1985, **30**, 541.
- 86 L. Koblinger and W. Hofmann, *J. Aerosol Med.*, 1995, **8**, 21–32.
- 87 L. Koblinger, W. Hofmann, R. C. Graham and R. R. Mercer, *J. Aerosol Med.*, 1995, **8**, 7–19.
- 88 L. Zhang, M. P. Schwartz, Z. Hou, Y. Bai, H. Ardalani, S. Swanson, J. Steill, V. Ruotti, A. Elwell, B. K. Nguyen, J. Bolin, R. Stewart, J. A. Thomson and W. L. Murphy, *Stem Cell Rep.*, 2017, **8**, 907–918.
- 89 K. L. Schmeichel and M. J. Bissell, *J. Cell Sci.*, 2003, **116**, 2377–2388.
- 90 T. Takahashi, T. Ogasawara, Y. Asawa, Y. Mori, E. Uchinuma, T. Takato and K. Hoshi, *Tissue Eng.*, 2007, **13**, 1583–1592.
- 91 J. Glowacki, S. Mizuno and J. S. Greenberger, *Cell Transplant.*, 1998, **7**, 319–326.
- 92 M. B. Sowa, W. B. Chrisler, K. D. Zens, E. J. Ashjian and L. K. Opresko, *Mutat. Res.*, 2010, **687**, 78–83.
- 93 A. Asaithamby, B. Hu, O. Delgado, L.-H. Ding, M. D. Story, J. D. Minna, J. W. Shay and D. J. Chen, *Nucleic Acids Res.*, 2011, **39**, 5474–5488.
- 94 E. Behraves, K. Emami, H. Wu and S. Gonda, *Adv. Space Res.*, 2005, **35**, 260–267.
- 95 D. J. Brenner, R. Doll, D. T. Goodhead, E. J. Hall, C. E. Land, J. B. Little, J. H. Lubin, D. L. Preston, R. J. Preston, J. S. Puskin, E. Ron, R. K. Sachs, J. M. Samet, R. B. Setlow and M. Zaider, *Proc. Natl. Acad. Sci. U. S. A.*, 2003, **100**, 13761–13766.
- 96 A. C. Economos, *Physiologist*, 1979, **22**, S71–S72.
- 97 J. H. Lin, *Drug Metab. Dispos.*, 1995, **23**, 1008–1021.
- 98 M. Sutton and S. R. Burastero, *Chem. Res. Toxicol.*, 2004, **17**, 1468–1480.
- 99 M. Fouillit, G. Grillon, P. Fritsch, G. Rateau, D. Pavé, J. Delforge and B. Le Gall, *Int. J. Radiat. Biol.*, 2004, **80**, 683–689.
- 100 M. Nedergaard, *Science*, 2013, **340**, 1529–1530.
- 101 M. W. Van der Helm, A. D. Van der Meer, J. C. T. Eijkel, A. Van den Berg and L. I. Segerink, *Tissue Barriers*, 2016, **4**, e1142493.
- 102 E. Ron, J. H. Lubin, R. E. Shore, K. Mabuchi, B. Modan, L. M. Pottern, A. B. Schneider, M. A. Tucker and J. J. D. Boice, *Radiat. Res.*, 1995, **141**, 259–277.
- 103 M. C. Jansen-van der Weide, M. J. W. Greuter, L. Jansen, J. C. Oosterwijk, R. M. Pijnappel and G. H. de Bock, *Eur. Radiol.*, 2010, **20**, 2547–2556.
- 104 T. Mammoto, A. Mammoto, Y. S. Torisawa, T. Tat, A. Gibbs, R. Derda, R. Mannix, M. de Bruijn, C. Yung, D. Huh and D. E. Ingber, *Dev. Cell*, 2011, **21**, 758–769.
- 105 S. L. Irons, V. Serra, D. Bowler, K. Chapman, S. Milioti, F. Lyng and M. Kadhim, *Int. J. Radiat. Biol.*, 2012, **88**, 735–742.



- 106 M. H. P. Rajaraman, S. Bouffler and A. Wojcik, *Ann. ICRP*, 2018, **47**, 126–141.
- 107 E. Ron, B. Modan, D. Preston, E. Alfandary, M. Stovall and J. J. D. Boice, *Radiat. Res.*, 1989, **120**, 516–531.
- 108 G. H. W. Sanders and A. Manz, *TrAC, Trends Anal. Chem.*, 2000, **19**, 364–378.
- 109 I. Dalle-Donne, R. Rossi, R. Colombo, D. Giustarini and A. Milzani, *Clin. Chem.*, 2006, **52**, 601–623.

