

# Evaluation of the formation pathways of cocrystal polymorphs in liquid-assisted syntheses†

Cite this: *CrystEngComm*, 2014, 16, 8272

Franziska Fischer,<sup>ab</sup> Gudrun Scholz,<sup>b</sup> Sigrid Benemann,<sup>a</sup> Klaus Rademann<sup>b</sup> and Franziska Emmerling<sup>\*a</sup>

Received 6th March 2014,  
Accepted 27th May 2014

DOI: 10.1039/c4ce00472h

[www.rsc.org/crystengcomm](http://www.rsc.org/crystengcomm)

The synthesis of the polymorphic cocrystal caffeine:anthranilic acid was investigated to obtain a better understanding of the processes leading to the formation of different polymorphic forms. In the case of these cocrystal polymorphs synthesized by liquid-assisted grinding a distinct influence of the dipole moment of the solvent was found. A pre-coordination between the solvent molecules and the caffeine:anthranilic acid cocrystal could be identified in the formation of form II. In the case of form II the solvent can be regarded as a catalyst. The formation pathway of each polymorph was evaluated using synchrotron X-ray diffraction.

## Introduction

A key challenge in pharmaceuticals is to evoke the best therapeutic effect of a drug and to improve its physicochemical properties especially water solubility and bioavailability. Polymorphs, cocrystals, and polymorphs of cocrystals of a given active pharmaceutical ingredient (API) exhibit different structures leading to different, often enhanced, physicochemical properties.<sup>1–3</sup> The term “cocrystal” is still under debate. Here we define cocrystals as a two- or more component crystalline phase consisting of uncharged organic compounds, which interact *via* intermolecular forces. A pharmaceutical cocrystal consists of at least one API and a coformer, typically a small organic molecule.<sup>4–8</sup> Since the formation of a cocrystal can change the physicochemical properties of an API, the crystallization processes, synthesis pathways and properties of these crystalline forms are of high interest in chemistry and pharmaceuticals. Among the numerous studies in the field of cocrystals only a few examples of polymorphs of cocrystals are known.<sup>9–14</sup> Examples of this phenomenon are caffeine cocrystals. Caffeine is used in the pharmaceutical treatment of migraine and primary apnea and it is a drug for all seasons.<sup>15</sup> It represents an ideal API model for cocrystal formation.<sup>16–19</sup> Due to the weakly basic nature of caffeine, its tendency for cocrystallization is higher than that for formation of a salt. Two polymorphic forms and one hydrate form of caffeine were characterized.<sup>20–24</sup>

Trask prepared one of the first caffeine containing cocrystals with glutaric acid as a coformer using the so called liquid-assisted grinding (LAG) method.<sup>14</sup> In this milling process a small amount of solvent is added to the solid reactant mixture to enhance the reaction rate. Many more investigations followed using other dicarboxylic acids including maleic acid, malonic acid and oxalic acid as coformers.<sup>25</sup> Several caffeine cocrystals and cocrystal solvates with diverse coformers were described.<sup>26–32</sup> Interest in the formation of caffeine cocrystals increased intensively and synthesis methods were developed in a targeted manner. Recently, Eddleston introduced cocrystallization by freeze-drying and a new form of a caffeine:theophylline cocrystal was identified.<sup>12</sup> Bučar pushed forward the application of heteronuclear seeding and described the 1:1 cocrystal caffeine:benzoic acid. The cocrystal could not be obtained by common synthesis techniques such as grinding or from solution.<sup>27</sup>

Despite the numerous known cocrystals of caffeine, there are only a few cocrystals showing the phenomenon of polymorphism. Trask reported that by changing the polarity of the solvent in solvent-drop grinding synthesis the polymorphic form of the cocrystal of caffeine with glutaric acid can be controlled.<sup>14</sup> Moreover, Ghosh and Trask described that the caffeine cocrystals with 4-chloro-3-nitrobenzoic acid and trifluoroacetic acid are able to crystallize in two different forms.<sup>11,33</sup> Two polymorphic forms were also found by Schultheiss during cocrystallization of caffeine with pterostilbene as a cocrystal former.<sup>34</sup>

Very recently, Jones published a caffeine:anthranilic acid (cf:ana) cocrystal revealing a high diversity of crystal forms: two polymorphs, two hydrates, and seven solvates. The polymorphic forms were prepared by LAG. Finding a mechanistic explanation for the formation of polymorphs I and in particular II

<sup>a</sup> BAM Federal Institute for Materials Research and Testing, Richard-Willstätter-Str. 11, 12489 Berlin, Germany. E-mail: [franziska.emmerling@bam.de](mailto:franziska.emmerling@bam.de)

<sup>b</sup> Department of Chemistry, Humboldt-Universität zu Berlin, Brook-Taylor-Str. 2, 12489 Berlin, Germany

† Electronic supplementary information (ESI) available: <sup>1</sup>H MAS NMR spectra of the reactants and the cocrystal. See DOI: 10.1039/c4ce00472h

still remains challenging.<sup>9</sup> Because of its structural diversity, the equimolar cocrystal cf:ana is an ideal model system for investigations on the formation processes. In this study, we show that the polymorphic forms of the cocrystal can be synthesized by LAG in a controlled way. X-ray diffraction investigations unambiguously allow distinguishing the formation of the different polymorphs, while Raman and solid-state NMR (ssNMR) studies give detailed insight into the hydrogen bond network.

To understand the influence of the solvent in the formation of a distinct polymorph in a LAG process, different solvents were added during the milling process. Based on these experiments, the important role of the solvent could be clarified.

## Results and discussion

Prior to the interpretation of liquid-assisted grinding experiments the possible salt formation has to be excluded. Therefore, Raman and ssNMR spectra of the reactants and the cocrystals were collected (Fig. 1).

The Raman spectra of both the polymorphic cocrystal forms and the reactants were recorded. Since the hydrogen-bonding arrangements of form I and form II are equivalent, the chemical environment of the molecules in the cocrystal polymorphs is identical, and the Raman spectra are very similar as shown in Fig. 2.

The Raman bands of caffeine at 1654  $\text{cm}^{-1}$  and 1698  $\text{cm}^{-1}$  (stretching vibration of carbonyl groups) and of anthranilic acid (ana) at 1245  $\text{cm}^{-1}$  (deformation vibration of the amino group) and 1373  $\text{cm}^{-1}$  (stretching vibration of the carboxylate group) were analyzed to determine if there is a complete shift of the acidic proton of ana towards caffeine.<sup>35,36</sup> The carbonyl

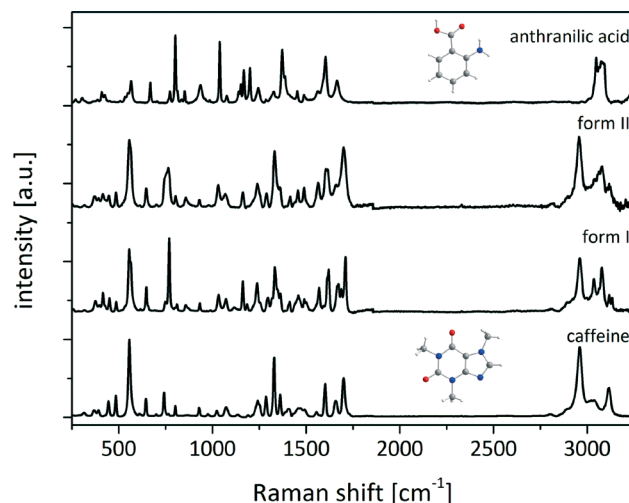


Fig. 2 Raman spectra of ana, the cf:ana cocrystal polymorphs, and caffeine.

band of the caffeine molecule at 1654  $\text{cm}^{-1}$  shifts by 12  $\text{cm}^{-1}$  (form I) and 2  $\text{cm}^{-1}$  (form II) to higher wavenumbers, whereas the second carbonyl band appears at 1665  $\text{cm}^{-1}$  in form I and 1658  $\text{cm}^{-1}$  in form II. These small Raman shifts reveal that the caffeine molecules are not highly affected in the conformation of the cocrystal. The amino group of ana is also not influenced, because the Raman deformation vibration band at 1245  $\text{cm}^{-1}$  slightly shifts by 5  $\text{cm}^{-1}$  (form I) and 4  $\text{cm}^{-1}$  (form II). A strong shift of the symmetrical stretching band of the carboxylate group can be observed. In ana the band appears at 1373  $\text{cm}^{-1}$ , while in both polymorphic forms of the cocrystal the band is located at 1333  $\text{cm}^{-1}$ . This strong shift can be attributed to the change of the chemical environment concerning the acid group of ana. In pure ana a

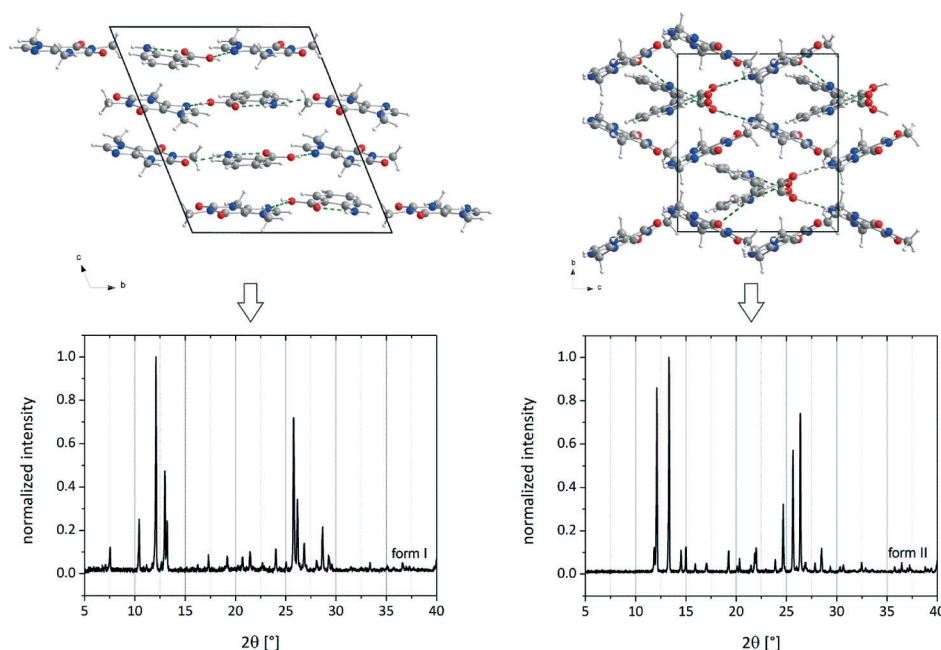


Fig. 1 Crystal structures and PXRD patterns of cf:ana form I (left) and form II (right).<sup>9</sup>



homosynthon between the carboxylic acid groups is formed,<sup>37</sup> and the protons of both carboxylic acids are delocalized. In contrast, in the cocrystal the proton of the acidic group of ana is involved in the hydrogen bond to a carbonyl oxygen atom of caffeine and is not bridged in such a strong manner. It is connected to the oxygen atom of ana and the cocrystal consists only of neutral molecules.

For further characterization the polymorphs of the cocrystal were investigated *via* ssNMR. Fig. 3 shows the spectra of both polymorphs along with the superimposed spectra of the two reactants measured under identical conditions. The methyl groups and the tertiary carbon of caffeine have resonance absorptions at 3.5 ppm and 7.8 ppm, respectively. These signals superimpose with the ssNMR signal of ana at 6.9 ppm, which is attributed to the aromatic protons and the amino groups of ana. The proton of the carboxylic group shows a signal at 17.0 ppm. This distinct shift reveals that the acidic proton of ana is bridged in a strong manner

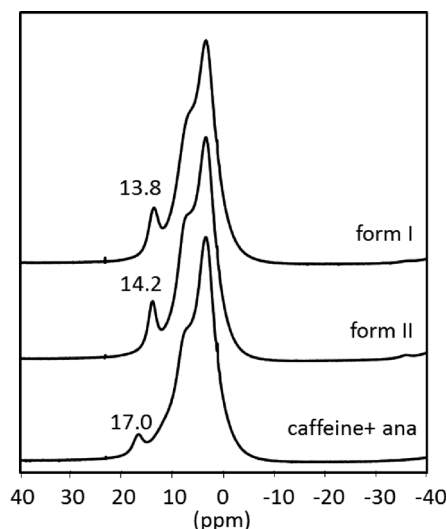


Fig. 3 <sup>1</sup>H magic angle spinning (MAS) NMR spectra of the cf:ana cocrystal form I (above) and form II (middle) and the superimposed spectra of the reactants (below) without the spinning sidebands.

because of the crystal packing in pure ana as shown in the Raman results.

The spectra of the cocrystal polymorphs resemble on a first view the sum of the spectra of the reactants but are not identical. More importantly, the strongly bridged acidic proton of ana is highly influenced, since its resonance position shifts *ca.* 3 ppm in both cocrystal forms. The other protons seem not to be highly affected in the cocrystal. Based on these results, it can be concluded that the acidic proton of ana is not as strongly bridged in the cocrystal as in pure ana.

To investigate the morphology of the cocrystal forms, SEM micrographs were taken. As shown in Fig. 4, both forms exhibit rod-shaped crystals, which are arranged locally in a parallel manner. This similarity can be traced back to the resembling crystal structures of the polymorphs and similar crystallization conditions. The main difference resides in the length of the crystals. In form I only short crystals can be obtained. In the case of form II, the crystals are elongated slightly. Despite this intensive characterization using SEM, Raman and ssNMR spectroscopy an unambiguous differentiation between the polymorphs is only possible based on the XRD data.

In order to investigate the formation of the polymorphic forms of the cf:ana cocrystal different solvents were added to the reactants caffeine and ana during the milling synthesis. In a typical experiment 1 g of the cocrystal reactants were milled together with 250  $\mu$ L of the solvent at 30 Hz for 25 min. The results of the syntheses are summarized in Table 1. Mostly, polymorph I is formed. In each experiment a pure cocrystal form is obtained and no crystalline phase mixtures were found. It can be supposed that the crystallization of form I proceeds without any interaction or pre-coordination between the solvent and the reactants. This polymorph is also formed by neat grinding or by adding non-polar solvents, which cannot create any intermolecular bonds with the reactants. Both polymorphic forms show a comparable thermodynamic stability, since the melting points differ only by 2 K (Fig. S2<sup>†</sup>). This assumption is supported by temperature dependent PXRD measurements. These measurements show

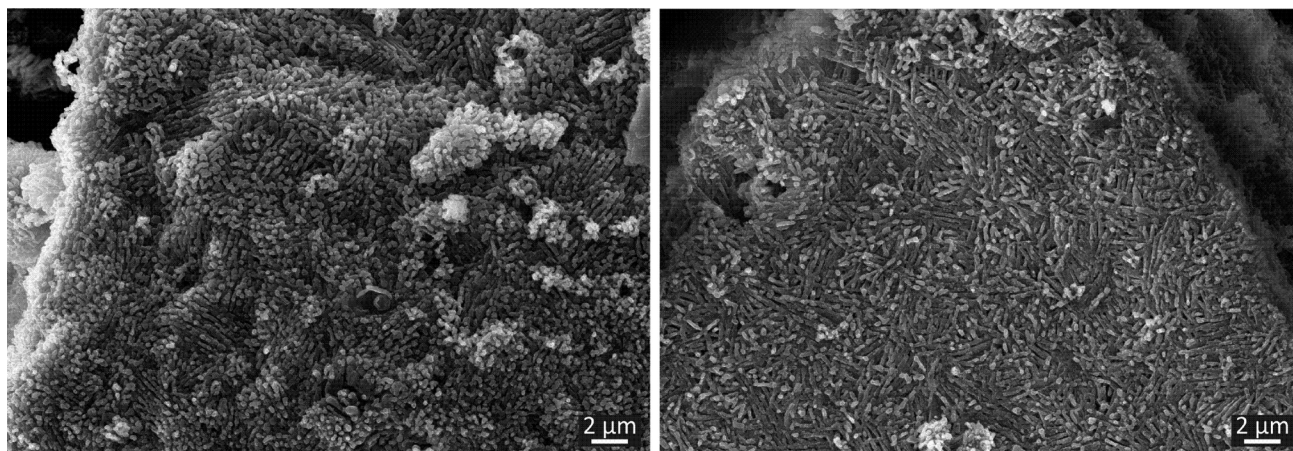


Fig. 4 SEM micrographs of the cf:ana cocrystal material form I (left) and form II (right).





**Table 1** Solubility of caffeine and ana in water and ethanol at room temperature and solvents added in the LAG syntheses and the resulting polymorph of the cocrystal<sup>38–40</sup>

Compound	Solubility in water [mg ml <sup>-1</sup> ]	Solubility in EtOH [mg ml <sup>-1</sup> ]	Compound	Solubility in water [mg ml <sup>-1</sup> ]	Solubility in EtOH [mg ml <sup>-1</sup> ]
Anthranilic acid	5	200	Caffeine	16	15
Solvent	Dipole moment [ $\times 10^{-30}$ C m]	Polymorphic form	Solvent	Dipole moment [ $\times 10^{-30}$ C m]	Polymorphic form
1,4-Dioxane	1.3	Form I	Methanol	5.5	Form I
2-Butanone	9.2	Form I	<i>n</i> -Heptane	0.0	Form I
Acetophenone	9.7	Form I	<i>n</i> -Hexane	0.0	Form I
Chloroform	3.7	Form I	<i>n</i> -Pentane	0.0	Form I
Cyclohexane	0.0	Form I	Nitromethane	10.3	Form I <sup>9</sup>
Dichloromethane	6.0	Form I	Tetrahydrofuran	5.7	Form I
Diethyl ether	4.2	Form I			
Ethanol	5.7	Form I	Acetone	10.0	Form II
Ethyl acetate	6.2	Form I	Acetonitrile	11.7	Form II
Ethylene glycol	6.7	Form I	Dimethylformamide	12.7	Form II

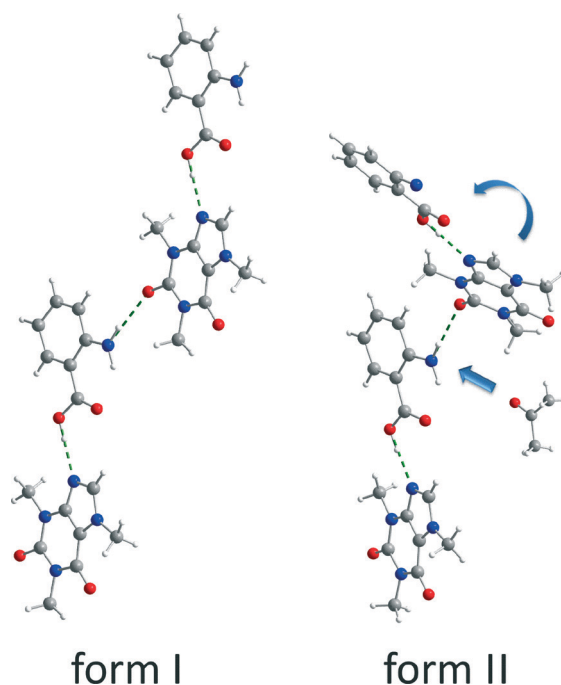
that the polymorphs do not convert into each other below the melting points (Fig. S3†). Slurry experiments reveal that in an 1:1 slurry of form I and form II in heptane only form I can be obtained after seven days. Therefore, form I can be considered slightly more stable compared to form II.<sup>9</sup> Based on the results of the temperature dependent PXRD experiments the preferred formation of a distinct polymorph based on its thermodynamic stability can be revealed.

The formation of the polymorphs of the cf:ana cocrystal form I or II depends decisively on the solvent which is added in the LAG synthesis. Only three of the 18 solvents lead to form II. The screening reveals that two facts play an important role for the formation of form II: the dipole moment of the solvent and the functional group of the solvent. Only if the solvent molecule has a high dipole moment, more precisely higher than  $10 \times 10^{-30}$  C m, can form II be formed. This includes the solvents acetone, acetonitrile, dimethylformamide and nitromethane. However, nitromethane seems to be an exception. Despite its high dipole moment, nitromethane generates form I.<sup>9</sup> In comparison to other solvents, only nitromethane has a nitro group as a functional group. This implies that aside from the high dipole moment a carbonyl or nitrile group is also necessary for the cocrystal formation of form II. These observations suggest that the formation of form II is triggered by a pre-coordination to the solvent molecule.

Both polymorphic forms exhibit the same synthon. Each caffeine molecule is connected to two ana molecules *via* hydrogen bonds. One hydrogen bond is formed between the imidazole nitrogen atom from a caffeine molecule and the carboxyl oxygen atom from an ana molecule. An additional hydrogen bond is formed between the amino group of an ana molecule and the carbonyl group of a caffeine molecule, leading to a chain structure. The main difference between the polymorphic forms is the environment around the latter hydrogen bond. In form I, all molecules of the chains are in plane leading to a planar layered structure, whereas in form II the caffeine molecule is twisted at the amino–carbonyl hydrogen bond resulting in zigzag-type chains. Based on this

difference, it can be assumed that the described torsion results from the pre-coordination to the solvent molecules, which takes place at the amino group of ana. Since the solvent molecule occupies too much space, the caffeine molecule cannot bind in the same planar layer and is twisted approximately 30° as shown in Fig. 5.

Systematic investigations with different volumes of acetonitrile added to the reactant mixture during the milling process were performed. Here, it can already be observed that after addition of 5  $\mu$ L of acetonitrile to a total load of 1 g of cocrystal material, form II crystallizes spontaneously (Fig. 6). This observation indicates that the coordination of the reactants with only a few solvent molecules already leads to a sufficient amount of the cocrystal form II as seeds for further crystallization. Because the solvent is not embedded in the

**Fig. 5** Bonding arrangement of the cf:ana form I (left) and form II (right).

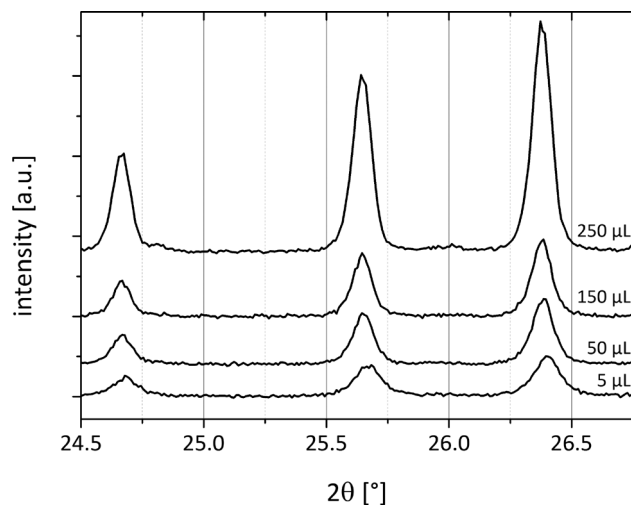


Fig. 6 PXRD patterns of cf:ana form II with different amounts of acetonitrile (5  $\mu$ L–250  $\mu$ L) added to 1 g of the reactant mixture.

crystal system, it can be thought of as a catalyst. Fig. 6 compares the powder patterns of the cocrystals synthesized using different amounts of acetonitrile. The intensity of the reflections decreases when a smaller amount of the solvent is used during grinding. The amount of the solvent accelerates the product formation.

To exclude a similar pre-coordination for form I, milling experiments were conducted by adding different mixture ratios of ethanol and acetonitrile in the LAG synthesis. If both polymorphic forms were induced by pre-coordination with the solvent molecules, a transition of one form to another would appear with the corresponding increase of the solvent. Fig. 7 illustrates that at a volume mixing ratio of 49:1 (ethanol:acetonitrile) the exclusive formation of polymorph II is triggered by the presence of acetonitrile. Consequently, a

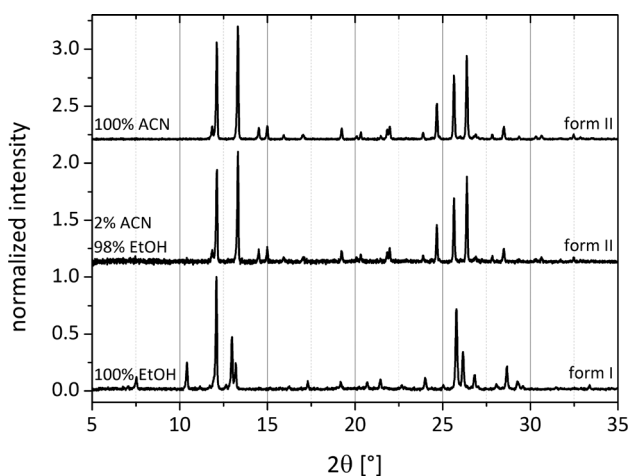


Fig. 7 PXRD patterns of cf:ana form II with different solvents (250  $\mu$ L) added to 1 g of the reactant mixture: acetonitrile (ACN), ethanol and acetonitrile (49:1, corresponding to the volumes of the solvents), and ethanol.

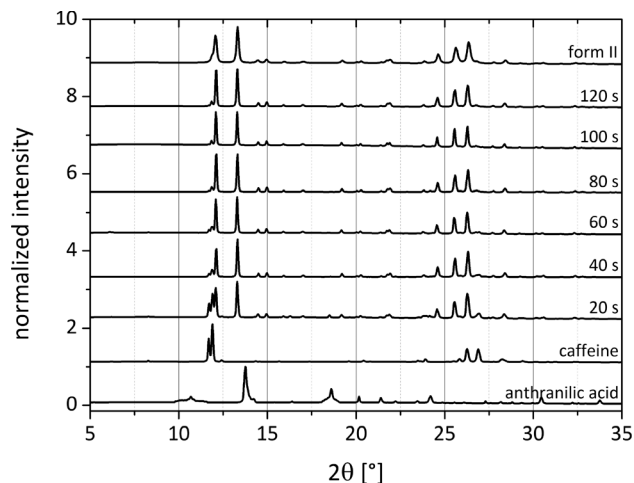


Fig. 8 PXRD patterns of the cf:ana cocrystal form II after different milling time intervals.

pre-coordination with the solvents leading to form I can be ruled out.

To elucidate the catalytic influence of the solvents forming form II, the synthesis of both cocrystal polymorphs was investigated *via* pseudo-*in situ* monitoring. The grinding synthesis was stopped after different periods of time and small amounts of the material were immediately investigated using synchrotron X-ray diffraction. Fig. 8 illustrates exemplarily the formation pathway of form II, which was obtained by adding 250  $\mu$ L of acetonitrile. While the reflections of ana are not observable in the powder pattern after 20 s, the first reflections of the cocrystal appear at that time. The reflections of caffeine disappear after 100 s of the LAG synthesis, and the cocrystal formation can be regarded as completed. The monitoring of the cocrystal synthesis also reveals that the formation pathway leads directly to form II without any transitional stages.

In a similar experiment the formation of form I (Fig. S4†) was also observed by pseudo-*in situ* monitoring using 250  $\mu$ L of dioxane. Here, no reflections of ana can be observed after 10 s. The formation of form I is much slower, and no caffeine reflections can be observed after 6 min. It can be postulated that the pre-coordination prior to the formation of form II causes also an acceleration of the reaction rate.

## Experimental

### Materials

Caffeine ( $C_8H_{10}N_4O_2$ ) (ReagentPlus®, Sigma Aldrich, Germany), anthranilic acid ( $C_7H_7NO_2$ ) ( $\geq 98\%$ , Acros Organics, USA), and all solvents were used without further purification.

### Milling synthesis

The synthesis of the two polymorphs was conducted by neat or liquid-assisted grinding (LAG) in a ball mill (MM400, Retsch, Germany) at 30 Hz for 25 min. A 10 mL steel vessel with two steel balls (10 mm) was used for a total load of 1 g



of the reactants. In the case of LAG 250  $\mu\text{L}$  of the solvent was added.

### PXRD measurements

The obtained product was measured by PXRD. All X-ray diffraction experiments were carried out using a D8 diffractometer (Bruker AXS, Karlsruhe, Germany) in transmission geometry (Cu-K $\alpha_1$  radiation,  $\lambda = 1.54056 \text{ \AA}$ ).

### Synchrotron X-ray diffraction

Pseudo-*in situ* measurements were performed at the micro-focus beamline  $\mu\text{Spot}$  (BESSY II, Helmholtz Centre Berlin for Materials and Energy, Germany) in transmission geometry. The powder patterns were collected with a wavelength of  $1.0039 \text{ \AA}$  using a Si (111) double-crystal monochromator and were recorded with a two-dimensional MarMosaic CCD X-ray detector with  $3072 \times 3072$  pixels. In a typical experiment, XRD patterns were collected for 30 s. The obtained scattering images were processed and converted into diagrams of scattered intensities *versus* scattering vector  $q$  ( $q = 4\pi \sin \theta / \lambda$ ) employing an algorithm from the FIT2D software.<sup>41</sup> For the graphical representations,  $q$ -values were converted to the diffraction angle  $2\theta$  (Cu) to provide a direct comparison to the results obtained by XRD with Cu radiation.

### Raman measurements

Raman measurements were performed using a Raman RXN1<sup>TM</sup> Analyzer (Kaiser Optical Systems, France). The spectra were collected using a laser with a wavelength of  $\lambda = 785 \text{ nm}$  and a contactless probe head (working distance  $1.5 \text{ cm}$ , spot size  $1.0 \text{ mm}$ ). Raman spectra were recorded with an acquisition time of 5 s for 5 accumulations. Measurements at NIR excitation radiation ( $\lambda = 785 \text{ nm}$ ) using an irradiation of  $6.6 \text{ W cm}^{-2}$  were performed.

### ssNMR spectroscopy

$^1\text{H}$  MAS NMR spectra were recorded using a Bruker AVANCE 400 spectrometer using a  $2.5 \text{ mm}$  double-bearing MAS probe (Bruker BioSpin) and a spinning speed of  $20 \text{ kHz}$ . The  $^1\text{H}$  MAS NMR spectra were recorded with  $\pi/2$  pulse lengths of  $3.7 \mu\text{s}$ , a recycle delay of  $5 \text{ s}$  and an accumulation number of 256. Existing background signals were suppressed with a phase-cycled depth pulse sequence based on Cory and Ritchey.<sup>42</sup>

### SEM

SEM micrographs were obtained using a ZEISS Supra 40 scanning electron microscope equipped with a thermal field emission cathode (Schottky-emitter, ZrO/W cathode). The acceleration voltage was set to  $10 \text{ kV}$  and the working distance was  $6.2 \text{ mm}$ . The samples were additionally deposited with a thin layer of carbon. The micrographs were acquired with an in-lens (SE1) secondary electron detector, a (SE2)

secondary electron detector of type Everhart–Thornley and a QBSD back-scatter electron detector.<sup>43</sup>

## Conclusions

The formation pathways of two polymorphs of the caffeine: anthranilic acid cocrystal were investigated under mechano-chemical conditions. Small amounts of solvents added during the grinding process lead to different polymorphs depending on the solvent. Solvents with low dipole moments favour the crystallization of form I. Solvents with high dipole moments lead to the crystallization of form II. In these cases the solvent molecules interact with the amino group of ana molecules. Consequently, the caffeine molecules have to twist for the development of the cocrystal synthon. For solvents with lower dipole moment a pre-coordination is not observed and the caffeine molecules are arranged in parallel in the layered structure of form I.

Pseudo-*in situ* monitoring of the synthesis pathway of both polymorphs using synchrotron radiation revealed that pre-coordination initializes not only the crystallization of the polymorphic form II but also accelerates the cocrystal formation with respect to the synthesis of form I. In addition, since only small amounts of the solvents are needed to cause the crystallization of form II, it can be seen as a catalyst.

These investigations show that in the liquid-assisted grinding synthesis the kind of solvent added during the milling process has an enormous influence and has an effect on the fate of the cocrystal product.

## Acknowledgements

We are grateful to Dr. M. Feist for DTA/TG measurements.

## References

- 1 B. Sarma, J. Chen, H. Y. Hsi and A. S. Myerson, *Korean J. Chem. Eng.*, 2011, **28**, 315–322.
- 2 J. Bauer, S. Spanton, R. Henry, J. Quick, W. Dziki, W. Porter and J. Morris, *Pharm. Res.*, 2001, **18**, 859–866.
- 3 J.-P. Brog, C.-L. Chanez, A. Crochet and K. M. Fromm, *RSC Adv.*, 2013, **3**, 16905–16931.
- 4 S. Aitipamula, R. Banerjee, A. K. Bansal, K. Biradha, M. L. Cheney, A. R. Choudhury, G. R. Desiraju, A. G. Dikundwar, R. Dubey, N. Duggirala, P. P. Ghogale, S. Ghosh, P. K. Goswami, N. R. Goud, R. R. K. R. Jetti, P. Karpinski, P. Kaushik, D. Kumar, V. Kumar, B. Moulton, A. Mukherjee, G. Mukherjee, A. S. Myerson, V. Puri, A. Ramanan, T. Rajamannar, C. M. Reddy, N. Rodriguez-Hornedo, R. D. Rogers, T. N. G. Row, P. Sanphui, N. Shan, G. Shete, A. Singh, C. C. Sun, J. A. Swift, R. Thaimattam, T. S. Thakur, R. Kumar Thaper, S. P. Thomas, S. Tothadi, V. R. Vangala, N. Variankaval, P. Vishweshwar, D. R. Weyna and M. J. Zaworotko, *Cryst. Growth Des.*, 2012, **12**, 2147–2152.
- 5 C. B. Aakeröy, M. E. Fasulo and J. Desper, *Mol. Pharmaceutics*, 2007, **4**, 317–322.



- 6 M. C. Etter and G. M. Frankenbach, *Chem. Mater.*, 1989, **1**, 10–12.
- 7 T. Friščić and W. Jones, *J. Pharm. Pharmacol.*, 2010, **62**, 1547–1559.
- 8 M. J. Zaworotko, *Cryst. Growth Des.*, 2006, **7**, 4–9.
- 9 N. Madusanka, M. D. Eddleston, M. Arhangelskis and W. Jones, *Acta Crystallogr., Sect. B: Struct. Sci., Cryst. Eng. Mater.*, 2014, **70**, 72–80.
- 10 M. J. Bevill, P. I. Vlahova and J. P. Smit, *Cryst. Growth Des.*, 2014, **14**, 1438–1448.
- 11 S. Ghosh, A. Mondal, M. S. R. N. Kiran, U. Ramamurty and C. M. Reddy, *Cryst. Growth Des.*, 2013, **13**, 4435–4441.
- 12 M. D. Eddleston, B. Patel, G. M. Day and W. Jones, *Cryst. Growth Des.*, 2013, **13**, 4599–4606.
- 13 N. Schultheiss, M. Roe and S. X. M. Boerrigter, *CrystEngComm*, 2011, **13**, 611–619.
- 14 A. V. Trask, W. D. S. Motherwell and W. Jones, *Chem. Commun.*, 2004, 890–891.
- 15 B. N. Cronstein, *J. Hepatol.*, 2010, **53**, 207–208.
- 16 B. B. Fredholm, K. Battig, J. Holmen, A. Nehlig and E. E. Zvartau, *Pharmacol. Rev.*, 1999, **51**, 83–133.
- 17 R. B. Lipton, W. F. Stewart, R. E. Ryan, J. Saper, S. Silberstein and F. Sheftell, *Arch. Neurol.*, 1998, **55**, 210–217.
- 18 S. Ghosh and C. M. Reddy, *CrystEngComm*, 2012, **14**, 2444–2453.
- 19 E. Lu, N. Rodriguez-Hornedo and R. Suryanarayanan, *CrystEngComm*, 2008, **10**, 665–668.
- 20 S. S. Pinto and H. P. Diogo, *J. Chem. Thermodyn.*, 2006, **38**, 1515–1522.
- 21 G. D. Enright, V. V. Terskikh, D. H. Brouwer and J. A. Ripmeester, *Cryst. Growth Des.*, 2007, **7**, 1406–1410.
- 22 T. E. Gorelik, A. Sarfraz, U. Kolb, F. Emmerling and K. Rademann, *Cryst. Growth Des.*, 2012, **12**, 3239–3242.
- 23 A. Sarfraz, A. Simo, R. Fenger, W. Christen, K. Rademann, U. Panne and F. Emmerling, *Cryst. Growth Des.*, 2012, **12**, 583–588.
- 24 J. Leiterer, F. Emmerling, U. Panne, W. Christen and K. Rademann, *Langmuir*, 2008, **24**, 7970–7978.
- 25 A. V. Trask, W. D. S. Motherwell and W. Jones, *Cryst. Growth Des.*, 2005, **5**, 1013–1021.
- 26 S. Aitipamula, P. S. Chow and R. B. H. Tan, *CrystEngComm*, 2012, **14**, 2381–2385.
- 27 D.-K. Bučar, G. M. Day, I. Halasz, G. G. Z. Zhang, J. R. G. Sander, D. G. Reid, L. R. MacGillivray, M. J. Duer and W. Jones, *Chem. Sci.*, 2013, **4**, 4417–4425.
- 28 D.-K. Bučar, R. F. Henry, X. Lou, R. W. Duerst, L. R. MacGillivray and G. G. Z. Zhang, *Cryst. Growth Des.*, 2009, **9**, 1932–1943.
- 29 D. K. Bučar, R. F. Henry, X. C. Lou, T. B. Borchardt and G. G. Z. Zhang, *Chem. Commun.*, 2007, 525–527.
- 30 H. D. Clarke, K. K. Arora, H. Bass, P. Kavuru, T. T. Ong, T. Pujari, L. Wojtas and M. J. Zaworotko, *Cryst. Growth Des.*, 2010, **10**, 2152–2167.
- 31 B. Das and J. B. Baruah, *Cryst. Growth Des.*, 2010, **11**, 278–286.
- 32 T. Friščić, L. Fabian, J. C. Burley, W. Jones and W. D. S. Motherwell, *Chem. Commun.*, 2006, 5009–5011.
- 33 A. V. Trask, J. van de Streek, W. D. S. Motherwell and W. Jones, *Cryst. Growth Des.*, 2005, **5**, 2233–2241.
- 34 N. Schultheiss, S. Bethune and J. O. Henck, *CrystEngComm*, 2010, **12**, 2436–2442.
- 35 I. Pavel, A. Szeghalmi, D. Moigno, S. Cîntă and W. Kiefer, *Biopolymers*, 2003, **72**, 25–37.
- 36 J. S. Suh and M. Moskovits, *J. Am. Chem. Soc.*, 1986, **108**, 4711–4718.
- 37 G. E. Hardy, W. C. Kaska, B. P. Chandra and J. I. Zink, *J. Am. Chem. Soc.*, 1981, **103**, 1074–1079.
- 38 A. L. McClellan, *Tables of experimental dipole moments*, WH Freeman, 1963.
- 39 A. M. Awwad and A. H. Al-Dujaili, *J. Chem. Eng. Data*, 2001, **46**, 1349–1350.
- 40 *Merck Index*, ed. S. Budavari, 12th edn, 1996.
- 41 A. P. Hammersley, K. Brown, W. Burmeister, L. Claustre, A. Gonzalez, S. McSweeney, E. Mitchell, J.-P. Moy, S. O. Svensson and A. W. Thompson, *J. Synchrotron Radiat.*, 1997, **4**, 67–77.
- 42 D. G. Cory and W. M. Ritchey, *J. Magn. Reson.*, 1988, **80**, 128–132.
- 43 A. Guilherme, V. D. Hodoroba, S. Benemann, J. Coroado and M. L. Carvalho, *J. Anal. At. Spectrom.*, 2014, **29**, 51–57.

