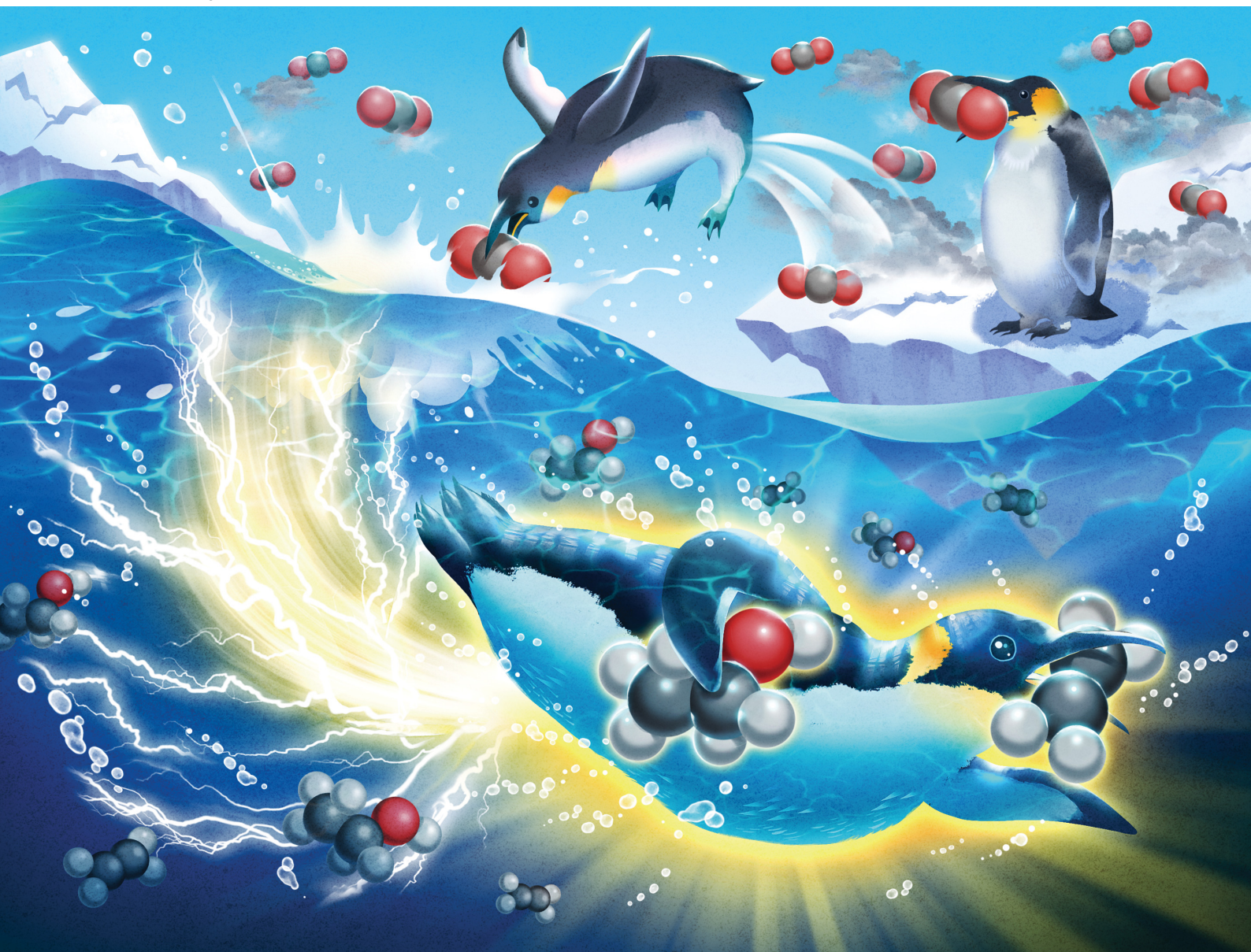


EES Catalysis

rsc.li/EESCatalysis



ISSN 2753-801X

COMMUNICATION

Shuji Nakanishi, Kazuhide Kamiya *et al.*
Ultra-high-rate CO₂ reduction reactions to multicarbon
products with a current density of 1.7 A cm⁻² in neutral
electrolytes



Cite this: *EES Catal.*, 2023,
1, 9

Received 1st September 2022,
Accepted 1st November 2022

DOI: 10.1039/d2ey00035k

rsc.li/eescatalysis

Ultra-high-rate CO₂ reduction reactions to multicarbon products with a current density of 1.7 A cm⁻² in neutral electrolytes†

Asato Inoue,^a Takashi Harada,^{ab} Shuji Nakanishi^{*ab} and Kazuhide Kamiya^{id} ^{*ab}

CO₂ electrolysis to value-added products is a promising technology to close the carbon cycle and sequester anthropogenic CO₂ into chemical feedstocks; an increase of the current density for multicarbon products is one of the requirements for practical implementation. We have successfully increased the partial current density for gaseous CO₂ reduction reactions to multicarbon products (C₂₊) over Cu nanoparticles on gas diffusion electrodes in neutral electrolytes to a record value of 1.7 A cm⁻². The faradaic efficiency for multicarbon products increased with the current density below total current density of 2000 mA cm⁻² and reached 76% at a total current density of 1600 mA cm⁻². The turnover frequency for the production of C₂₊ per Cu atoms exceeded 1.1 s⁻¹. Optimizing the standard components and their assembly as the cathode elicits the high-turnover frequency of oxide-derived Cu catalysts, resulting in the record partial current density for C₂₊. Especially, we demonstrated that the thickness of catalyst layers was one highly sensitive factor in determining the maximum current density for C₂₊.

Broader context

The electrochemical reduction of carbon dioxide (CO₂) has attracted considerable attention to maintain the carbon cycle. An increase in the current density for value-added multicarbon products (C₂₊), such as ethylene and ethanol, is required for practical implementation of this technology. Herein, we successfully obtained the partial current density for C₂₊ over cupric oxide (CuO) nanoparticles on gas diffusion electrodes in neutral electrolytes to a value of 1.7 A cm⁻². Additionally, the faradaic efficiency for multicarbon products increased with the current density below $J_{\text{total}} = 2000 \text{ mA cm}^{-2}$ and reached up to 76%. Our ultra-high-rate CO₂ electrolysis was achieved by optimizing the ordinary components, including oxide-derived Cu nanoparticles and carbon-based gas-diffusion electrodes, and their assembly as the cathode. In the other word, the present study succeeded in eliciting the potential performance of an ordinary combination. Although more detailed analyses are needed, our electrodes will teach us essential requirements for ultra-high-rate electrolysis. Additionally, the obtained knowledge through the detailed analyses of our electrodes would be widely utilized to develop novel materials, such as catalysts and electrodes.

Introduction

The electrochemical carbon dioxide reduction reaction (CO₂RR) has attracted considerable attention as a promising strategy for the conversion of anthropogenic CO₂ into value-added products.^{1–10} One advantage of this method is that this greenhouse gas can be reduced under mild conditions (close to ambient temperature and pressure).¹¹ However, the operative efficiency, product selectivity and rate must be improved for practical implementation.^{12,13} Among them, it has been reported

that the current density for the production of high value-added products is correlated to the capital cost of the electrodes employed.¹⁴ Therefore, improvement of the current density would significantly affect the feasibility of this technology.

The use of gas diffusion electrodes (GDEs) that allow the CO₂RR to occur at the solid-catalyst/liquid-electrolyte/gaseous-CO₂ interface, effectively accelerate the CO₂RR by solving the problem of the mass transport limitation due to the inherently low diffusion and solubility of CO₂ in water.^{15,16} A catalyst layer (CL) composed of metal Cu particles and ionomers on carbon-based microporous layers has been widely studied as the standard cathode for gaseous CO₂RR to produce C₂₊ organics, such as C₂H₄, C₂H₅OH, C₃H₇OH and CH₃COOH.^{8,17–19} Although the partial current density for C₂₊ ($j_{\text{C}_{2+}}$) has still remained below 500 mA cm⁻² in many studies,^{18,20–27} a few studies have developed novel cathode assemblies or components toward an ultra-high-rate (UHR-) CO₂RR with over $j_{\text{C}_{2+}} = 1 \text{ A cm}^{-2}$. Sargent *et al.* successfully achieved a $j_{\text{C}_{2+}}$ over 1.2 A cm⁻² in 7 M KOH using an electrode fabricated by

^a Research Center for Solar Energy Chemistry, Graduate School of Engineering Science, Osaka University, 1-3 Machikaneyama, Toyonaka, Osaka 560-8531, Japan. E-mail: nakanishi.shuji.es@osaka-u.ac.jp, kamiya.kazuhide.es@osaka-u.ac.jp

^b Innovative Catalysis Science Division, Institute for Open and Transdisciplinary Research Initiatives (ICS-OTRI), Osaka University, Suita, Osaka 565-0871, Japan

† Electronic supplementary information (ESI) available. See DOI: <https://doi.org/10.1039/d2ey00035k>



dropping Cu nanoparticles on a sputtered Cu film/porous polytetrafluoroethylene (PTFE).²⁸ Additionally, in this work, the bulk heterojunction of catalysts and ionomers decoupled the pathways for gases, electrons and ions, which resulted in a $j_{C_{2+}}$ over 1 A cm^{-2} . Wang and co-authors reported that a fluorine-modified copper catalyst deposited on GDEs exhibited a total current density (J_{total}) of 1600 mA cm^{-2} with a faradaic efficiency for C_{2+} ($FE_{C_{2+}}$) of over 80% (*i.e.*, $j_{C_{2+}} = \text{over } 1.2 \text{ A cm}^{-2}$) in 0.75 M KOH .²⁹ Very recently, Zheng *et al.* obtained $j_{C_{2+}} = 0.91 \text{ A cm}^{-2}$ using nitrogen-engineered Cu nanoparticles in 1 M KOH .¹⁰

In these reports, UHR- CO_2RR has been achieved using high alkaline solutions to suppress H_2 evolution, which competes with the CO_2RR . However, in addition to the toxicity and corrosivity, alkaline solutions quickly absorb CO_2 and convert it to electrochemically inert (bi)carbonate.^{30–33} Based on these drawbacks, UHR electrolysis in neutral electrolytes is thus required from a practical viewpoint. Furthermore, these previous studies succeeded in achieving UHR- CO_2RR by developing novel components in the three-phase interfaces (*i.e.*, catalysts or electrodes). However, the obtainable maximum $j_{C_{2+}}$ value is still unknown when optimizing the standard components; CuO nanoparticle catalysts (CuONPs), which are known to serve as oxide-derived Cu catalysts for effective C_{2+} production,^{34–36} and carbon-based gas diffusion layers. An electrochemical system that can elicit the maximum $j_{C_{2+}}$ using only standard components will become the primary platform for future studies to design materials and interfaces for UHR- CO_2RR . In other words, the design guidelines obtained from the UHR- CO_2RR with only ordinary materials would be quite general, and thus, they are expected to be widely applicable to novel materials and systems.

In the present work, we attempt to pursue a high partial current density for C_{2+} ($j_{C_{2+}}$) using neutral electrolytes by optimizing the standard components and properly assembling them as the cathode. In particular, we achieved a record current density of 1.7 A cm^{-2} for multicarbon products in neutral electrolytes using synthetic or commercial CuONPs and carbon-based gas diffusion layers. Firstly, we will explain the details in characterizations and CO_2RR activity of our optimized electrode, and let us discuss the mechanism of UHR- CO_2RR . Then, the requirements for our UHR electrolysis will be discussed with varying components and conditions.

Results and discussion

UHR- CO_2RR over 1.7 A cm^{-2} for C_{2+} products obtained with CuONPs

In this first section, let us show the detailed characterizations and electrochemical properties of our optimized electrode for UHR- CO_2RR , which is composed of the GDE (GDL 34BC) carrying our synthesized CuONPs. CuONP catalysts were synthesized by wet-chemical reduction using NaBH_4 as a reductant. Transmission electron microscopy (TEM) observations (Fig. 1a and Fig. S1, ESI†) show that the particle morphology and size is spherical and 20 nm , respectively. X-ray diffraction (XRD)

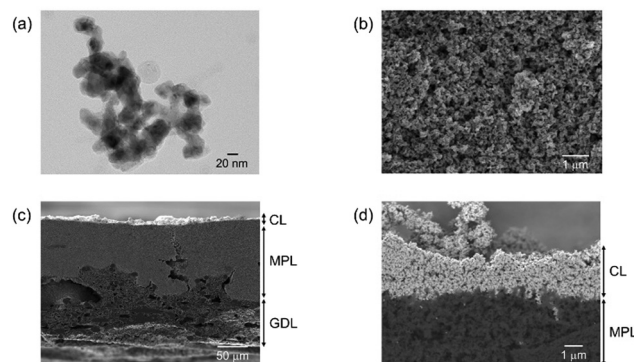


Fig. 1 (a) Representative TEM image of the synthesized CuONPs. (b) Top-view and (c and d) cross-sectional SEM micrographs of CuONPs-1.7/GDE.

patterns (Fig. S2, ESI†) indicate peaks at 35.5° and 38.7° , which are attributed to $\text{CuO}(002)$ and $\text{CuO}(111)$, respectively. This oxidation state of the as-prepared sample was also confirmed by narrow scan X-ray photoelectron spectroscopy (XPS) and X-ray absorption near edge structure (XANES), as shown in Fig. S3 and S4 (ESI†), respectively. Note that the Cu(II) oxidation state was reduced to $\text{Cu(I)}/\text{Cu(0)}$ during electrolysis (Fig. S5 and S6, ESI†). Morphological characterization of the CuONPs/GDEs (Fig. S7, ESI†) was conducted using scanning electron microscopy (SEM). Fig. 1b–d and Fig. S8 (ESI†) show top- and cross-sectional SEM images of CuONPs-1.7/GDE (where the loading amount of CuONPs is 1.7 mg cm^{-2} on GDL 34BC), respectively. CuONPs completely covered the electrode surface based on the top-view SEM images, and were deposited on the microporous layer (MPL) composed of carbon nanoparticles. The cross-sectional SEM images reveal that the thickness of the MPL and the CL were *ca.* 80 and $2 \mu\text{m}$ for CuONPs-1.7/GDE, respectively. When the loading amount of CuONPs was varied to 0.34 mg cm^{-2} (Fig. S9, ESI†) and 3.1 mg cm^{-2} (Fig. S10, ESI†), the CL thicknesses changed to *ca.* $0.5 \mu\text{m}$ and $4 \mu\text{m}$, respectively. The roughness factors of the CL were obtained using a surface profilometer. When increasing CL thickness, the surface becomes rougher (Fig. S11 and Table S1, ESI†).

We measured the CO_2RR activity of the Cu-based GDE catalysts. An in-house-built three-compartment electrochemical cell was used for CO_2RR evaluation (Fig. S12, ESI†).^{37,38} J_{total} vs. potential (U) curves were obtained in 1 M KCl under CO_2 and argon conditions, as shown in Fig. S13 (ESI†). The onset potential of the cathodic current for bare and Cu-modified GDEs were -1.6 and $-1.2 \text{ V vs. Ag/AgCl}$ under CO_2 , respectively. When the Cu amount was increased from CuONPs-0.34/GDE to CuONPs-3.1/GDE, the cathodic current under CO_2 gradually increased.

The CO_2RR products in outlet gas streams from the gas chamber and electrolytes from the catholyte room were analysed using gas chromatography (Fig. S14, ESI†) and ^1H nuclear magnetic resonance (NMR) spectroscopy (Fig. S15, ESI†) after constant-current electrolysis, respectively. Fig. 2a, b and Fig. S16 (ESI†) show the FE and partial current density of CO_2RR products against the applied potential for CuONPs-1.7/GDE in 1 M KCl , respectively. Under low current conditions ($J_{\text{total}} = 200 \text{ mA cm}^{-2}$)



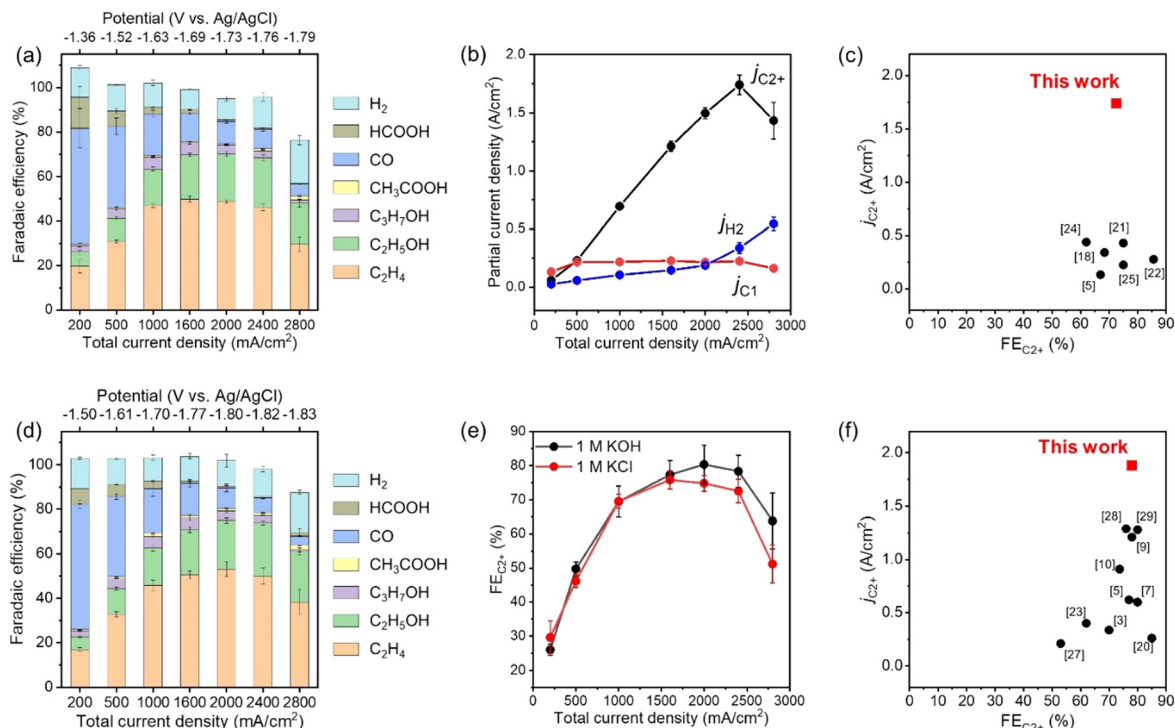


Fig. 2 (a) FEs of the CO₂RR products under various applied potentials on CuONPs-1.7/GDE in 1 M KCl. Reaction time: 30 min. (b) Partial current density for C₂₊, C₁ and H₂ on CuONPs-1.7/GDE in 1 M KCl. (c) Comparison of FE_{C₂₊} and *j*_{C₂₊} for CuONPs-1.7/GDE with reported Cu-based catalysts in neutral solution (for the detailed references, see Table S2, ESI†). (d) FEs for the CO₂RR products under various applied potentials on CuONPs-1.7/GDE in 1 M KOH. Reaction time: 30 min. (e) Comparison of FE_{C₂₊} in 1 M KOH and in 1 M KCl under various *J*_{total} over CuONPs-1.7/GDE. (f) Comparison of FE_{C₂₊} and *j*_{C₂₊} for CuONPs-1.7/GDE with reported Cu-based catalysts in alkaline solution (for the detailed references, see Table S5, ESI†).

at -1.36 V vs. Ag/AgCl electrode, CO was the main product ($\text{FE}_{\text{CO}} > 50\%$), and the $\text{FE}_{\text{C}_2\text{H}_4}$ was below 20%. The FE for C₂₊ products increased and reached 76% at -1.69 V vs. Ag/AgCl electrode ($J_{\text{total}} = 1600 \text{ mA cm}^{-2}$) when the applied potential was shifted to the negative side. In particular, the FEs for C₂H₄ and C₂H₅OH were 46% and 22% at -1.76 V vs. Ag/AgCl electrode, respectively. The partial current density for C₂₊ products (C₂H₄, C₂H₅OH, C₃H₇OH, and CH₃COOH) was over $j_{\text{C}_2+} = 1.7 \text{ A cm}^{-2}$ at -1.76 V vs. Ag/AgCl electrode. On the contrary, the FEs for C₁ products (CO, CH₄ and HCOOH) and H₂ were 8.8 and 14% at -1.76 V vs. Ag/AgCl electrode, respectively. Fig. 2c and Table S2 (ESI†) show a comparison of *j*_{C₂₊} and FE_{C₂₊} in neutral electrolytes among the reported values. The partial current density for C₂₊ production (j_{C_2+} = over 1.7 A cm^{-2}) is a record value, and the FE_{C₂₊} is also one of the highest. Therefore, the present study succeeded in eliciting the potential performance of an ordinary combination for UHR-CO₂RR (*i.e.*, CuO-derived Cu nanoparticles and carbon-based GDEs). Significantly, such a high *j*_{C₂₊} value for our assembly was remarkably reproducible even using different batches of electrodes, as shown in Fig. S17 and Table S3 (ESI†). When the applied potential was changed to -1.79 V vs. Ag/AgCl electrode ($J_{\text{total}} = 2800 \text{ mA cm}^{-2}$), the FE for C₂₊ products suddenly decreased, and the FE for H₂ increased. The total FEs at -1.79 V vs. Ag/AgCl electrode did not reach 100% (*ca.* 80%) because the bubbles contained CO₂ substrate, CO₂RR products, and H₂ formed at the cathode surface and diffused into the catholyte chamber. The applied potential was compensated

using the current interrupt method as written in the experimental section^{39–41} (see Fig. S18 for the values *versus* reversible hydrogen electrode, ESI†). However, as accurate potential corrections are difficult under ultra-high-current conditions, we must note that the applied potentials are still referenced values.

Even when using neutral solutions, the local pH at the surface of the catalyst increases significantly during UHR-CO₂RR due to the consumption of protons with an increase in the CO₂RR current density. Our rough calculation and previous reports showed that the local pH becomes almost the same in neutral and alkaline electrolytes during high-current electrolysis (Fig. S19 and Table S4, ESI†). Therefore, the cathode reaction proceeded under alkaline environments for UHR-CO₂RR even with neutral solutions; thus, the fabricated cathode was expected to be suitable for UHR-CO₂RR even in bulk alkaline solutions. Fig. 2d shows the FEs of CO₂RR products against the applied potential for CuONPs-1.7/GDE in 1 M KOH alkaline electrolyte, and Fig. 2e shows a comparison of the FEs of C₂₊ products for CuONPs-1.7/GDE in 1 M KCl and 1 M KOH solutions. The FEs for CO₂RR activity in alkaline and neutral solutions were almost the same in the range of $J_{\text{total}} = 200\text{--}2400 \text{ mA cm}^{-2}$, which indicates that the local pH around the CL in 1 M KOH and 1 M KCl solutions was not dependent on the bulk pH during electrolysis at $J_{\text{total}} = 200 \text{ mA cm}^{-2}$. The partial current density for C₂₊ products in alkaline solutions reached $j_{\text{C}_2+} = 1.8 \text{ A cm}^{-2}$, which is a record value in alkaline solution, as compared and listed in Fig. 2f and Table S5 (ESI†).

respectively, *i.e.*, this electrode can exhibit a record $j_{C_{2+}}$ in both neutral and alkaline solutions. The mass activity, turnover frequency (TOF) and energy efficiency values are also summarized in Fig. S20 and Table S6 (ESI†) as reference data.

The volcano-type relation between $FE_{C_{2+}}$ and current density was observed in the present UHR- CO_2RR system. Especially, the $FE_{C_{2+}}$ increased with increasing current density below $J_{total} = 2000 \text{ mA cm}^{-2}$, and thus, a trade-on relationship between rate and selectivity was exhibited in this current region, as shown in Fig. 2a. Let us discuss the mechanism for the increase of $FE_{C_{2+}}$ with the current density. It should be noted here that it is difficult to strictly distinguish whether the selectivity toward the product depends on the current density (*i.e.*, reaction rate) or on the applied potential because we cannot control each parameter independently. We here explain the product selectivity from the viewpoint of current density: the effect of (1) CO partial pressure, (2) local pH,⁴² and (3) *in situ* formation of the three-phase interface. The CO partial pressure in the CL became high with an increase in the current density, which facilitated CO dimerization. Jun Li *et al.* controlled local CO availability at the catalyst-electrolyte interface and demonstrated that a high concentration of CO accelerated CO dimerization, and caused a higher current density with C_{2+} production.⁴³ Jing Li and co-workers reported that a high CO partial pressure suppresses H^+ adsorption, which leads to lowering of the hydrogen evolution reaction (HER).⁴⁴ It should also be noted here that the FE for C_2H_5OH against C_2H_4 increased with increasing J_{total} (Fig. S21, ESI†). It has been reported that high CO pressure on a Cu surface favours C_2H_5OH production over C_2H_4 because the *CHCHOH intermediate for C_2H_5OH becomes more stable than *CCH for C_2H_4 under high CO coverage.^{43,45} This is because CCH^* and *CHCHOH are adsorbed on Cu sites with side-on and end-on configurations, respectively, so that CCH^* requires a larger occupied molecular area than *CHCHOH . This change in selectivity between C_2H_4 and C_2H_5OH supports that the CO local pressure depended on the current density. The increase in the local pH at the surface of the CL due to proton consumption by the CO_2RR suppressed HER (*vide supra*). The pH at the electrode surfaces is known to reach up to 11.9 under electrolysis at just $J_{total} = 50 \text{ mA cm}^{-2}$ in neutral electrolytes.^{15,46} Considering that the almost same product selectivity was obtained in neutral (1 M KCl) and alkaline (1 M KOH) solutions between $J_{total} = 200\text{--}2400 \text{ mA cm}^{-2}$, the local pH in KCl solution became similar to that in KOH solution under electrolysis with J_{total} of just $J_{total} = 200 \text{ mA cm}^{-2}$. Further increase in the current density ($J_{total} > 1000 \text{ mA cm}^{-2}$) would lead to a pH of over 15 at the surface of the catalyst.⁷ Moreover, we propose that the *in situ* formation of the gas-transport pathway depending on the current density occurs during electrolysis. Evolved gases, such as H_2 , would migrate through gas-transport channels in the CL; therefore, the area of the CO_2RR active interface (three-phase interfaces) could be expanded with an increase in the current density (see Fig. S22, ESI†).

It is important to identify the origin of the decrease in the CO_2RR activity by application of $J_{total} = 2800 \text{ mA cm}^{-2}$ for

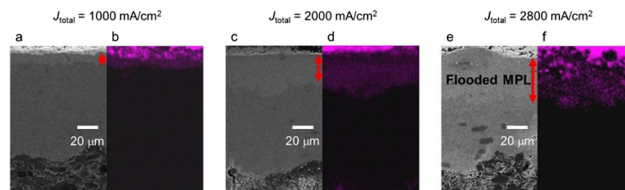


Fig. 3 (a, c and e) Cross-sectional SEM images of CuONPs-1.7/GDE and (b, d and f) K^+ distribution (purple) obtained by EDX after application of $J_{total} =$ (a and b) 1000 mA cm^{-2} , (c and d) 2000 mA cm^{-2} , and (e and f) 2800 mA cm^{-2} for 30 min under CO_2RR conditions in 1 M KCl.

CuONPs-1.7/GDE (Fig. 2a and d) toward a further increase in the production rate. It was assumed that the three-phase interface was broken over $J_{total} = 2800 \text{ mA cm}^{-2}$, which resulted in a severe decrease in the FE for C_{2+} products. Fig. 3 shows cross-sectional SEM images after application of $J_{total} = 1000$, 2000 , and 2800 mA cm^{-2} (30 min) in 1 M KCl, respectively. The particle size of the CuONPs became about 10% smaller after electrolysis due to the reduction of CuONPs to Cu(I)/Cu(0)NPs (Fig. S23, ESI†). Cross-sectional elemental energy dispersive X-ray spectroscopy (EDX) mapping show K^+ derived from electrolytes entered the MPL layer. One-tenth and one-fourth of the MPL layers were flooded after application of $J_{total} = 1000 \text{ mA cm}^{-2}$ and 2000 mA cm^{-2} , respectively. In contrast, after the degradation with application of $J_{total} = 2800 \text{ mA cm}^{-2}$ (30 min), the K^+ distribution was shown to reach half of the MPL layer (Fig. 3e). In addition, a residue of K^+ crystals ($KHCO_3$ and K_2CO_3 , KCl and KOH) was observed throughout the MPL after application of $J_{total} = 2800 \text{ mA cm}^{-2}$ (Fig. S24, ESI†). Electrowetting effects, which decrease the solid-liquid interfacial tension and facilitate electrolyte penetration into the CL and MPL, are known to be emphasized under application of highly negative potentials.^{47–49} Although the evolved gases may push out and expand the gas-transport pathways (as the *in situ* formation of the three-phase interface), flooding of the MPL due to electrowetting may exceed the rate of pushing out the electrolyte. The flooded CL (and MPL) produced only H_2 due to a lack of CO_2 transportation, and thus, H_2 production should become dominant at $J_{total} = 2800 \text{ mA cm}^{-2}$. This assumption is also supported by the diffusion of evolved gases into the catholyte chamber at $J_{total} = 2800 \text{ mA cm}^{-2}$ (*vide supra*).

UHR- CO_2RR with varying components and conditions

Here, let us attempt to reveal which factors are sensitive for our UHR- CO_2RR by varying several components and conditions.

Fig. S25 and Table S7 (ESI†) show the FE of CO_2RR products under $J_{total} = 2000 \text{ mA cm}^{-2}$ when changing catalysts, the thickness of CL, electrolytes, and GDEs. One can notice that several kinds of commercial GDEs are available for UHR- CO_2RR . Additionally, the high $j_{C_{2+}}$ of over 1.3 A cm^{-2} was obtained using 1 M $KHCO_3$, which has been widely used as a neutral electrolyte for CO_2RR . The slight decrease of $j_{C_{2+}}$ in 1 M $KHCO_3$ is likely due to an acceleration of salt precipitation in MPL in the bicarbonate-rich electrolytes.

Surprisingly, UHR- CO_2RR with $j_{C_{2+}}$ of over 1.4 A cm^{-2} was realized even when using commercial CuONPs with the size of



Although our study is not the first paper to optimize and discuss each parameter, including the size of catalysts, porosity, and thickness of CL, we think that these interdependent parameters were optimized simultaneously, likely resulting in the highest $j_{\text{C}_{2+}}$ in this work. However, we must note that some requirements, especially for catalysts, toward UHR-CO₂RR are still veiled. This work is focused on demonstrating the potential of ordinary catalysts; providing more detailed requirements will be left for a future paper.

Fig. 5b and Fig. S33 (ESI[†]) show the FEs for CO₂RR products at $J_{\text{total}} = 1600 \text{ mA cm}^{-2}$ in 1 M KCl as a function of the electrolysis time. The change in the FEs for CO₂RR products under electrolysis at $J_{\text{total}} = 1600 \text{ mA cm}^{-2}$ was almost negligible for over 2 h. Although the FE for C₂₊ and H₂ then began to decrease and increase from 2 h, respectively, the FE_{C₂₊}

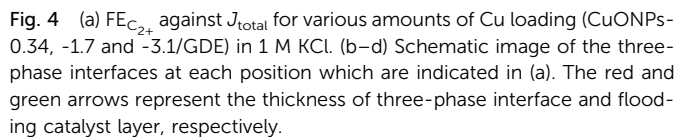




Fig. 5 $FE_{C_{2+}}$ stability tests with respect to the current density over CuONPs-1.0/GDE in 1 M KCl under (a) $J_{total} = 1000 \text{ mA cm}^{-2}$, (b) 1600 mA cm^{-2} and (c) 2000 mA cm^{-2} .

production remained over 75% for 2.5 h and 60% for over 6 h. The electrode was analysed after the decrease of FEs for C_{2+} to clarify the origin of activity decrease. SEM observation (Fig. S34, ESI†) after electrolysis for 6 h at 1600 mA cm^{-2} showed that the morphology of CLs did not significantly vary, and most of the MPL was flooded in a similar manner to that described in previous reports.^{53,54} The recycling test was also conducted. Fig. S35 (ESI†) shows that the $FE_{C_{2+}}$ value was recovered by washing the electrode with pure water after the decrease. This result also indicates that the decrease in $FE_{C_{2+}}$ was due not to the degradation of catalysts but to the salt precipitation induced by flooded MPL. The stability dependence on the applied current density was investigated next (Fig. 5a–c and Fig. S33, ESI†). The $FE_{C_{2+}}$ of 70–80% almost unvaried for over 3 h and 1.5 h at $J_{total} = 1000 \text{ mA cm}^{-2}$ and $J_{total} = 2000 \text{ mA cm}^{-2}$, respectively. These results indicated a trade-off relationship between stability and current density; however, the decrease in $FE_{C_{2+}}$ within a short timescale was due to flooding of the CL and MPLs. Therefore, we can expect that the stability could be improved by the addition of hydrophobic materials and modulation of the porosity in the CL and MPL. The present electrochemical system and conditions will become one of the standard platforms toward these future studies.

Conclusions

In this work, our electrode exhibited partial current densities for CO_2 reduction to C_{2+} of 1.7 A cm^{-2} in neutral solutions by optimizing the standard components and their assembly. When the total current density was increased, the FEs for C_{2+} increased monotonically below $J_{total} = 2000 \text{ mA cm}^{-2}$. Therefore, the trade-on relationship between the reaction rate and selectivity was shown in the present UHR- CO_2 RR under those J_{total} regions. Although the cathode of this electrochemical system was composed of typical CuO-derived Cu nanoparticles, a carbon-based GDE, we successfully maximized the potential of the catalytic activity of the Cu surface by constructing a CL with optimal porosity and thickness. Especially, we revealed that the thickness of CL was directly correlated to $j_{C_{2+}}$. The optimal thickness of CL was required for UHR- CO_2 RR. It is noteworthy that this electrode allowed us to achieve UHR- CO_2 RR even in neutral solutions, which is more practical than alkaline solutions. The present system is expected to become one of the standards when pursuing high-current density for the CO_2 RR by the design of novel components or assemblies. Although more detailed

analyses are needed, our electrodes will teach us essential requirements for UHR electrolysis. Furthermore, the obtained knowledge through the detailed analyses of our electrodes would be widely utilized to develop novel materials, such as catalysts and electrodes because our electrodes are composed of only standard components. Systematic stability tests were also conducted at over $j_{C_{2+}} = 1 \text{ A cm}^{-2}$. Although the stability under ultra-high-current conditions was still far from a practical level, SEM observations revealed that flooding of the CL and MPL is a problem that occurs within the shortest time scale. The electrochemical conditions and systems in this study can serve as a platform for improvement of the stability of the UHR- CO_2 RR.

Conflicts of interest

There are no conflicts to declare.

Acknowledgements

This research was based on the Integrated Electrochemical Systems for Scalable CO_2 Conversion to Chemical Feedstocks project performed as part of the Moonshot Research and Development Program funded by the New Energy and Industrial Technology Development Organization (grant no. 20001627-0). This work was also supported by a JSPS KAKENHI Program (20H02568) and CREST (grant no. JPMJCR18R3) of the Japan Science and Technology Agency (JST). TEM measurement was carried out by using a facility in the Research Center for Ultra-High Voltage Electron Microscopy, Osaka University, and TEM observation was supported by Dr Takao Sakata. Synchrotron radiation experiments were performed using the BL01B1 beamline of SPring-8 with approval of the Japan Synchrotron Radiation Research Institute (Proposals 2020A1426, 2021A1294, 2021B1204, and 2022A1165). Mr Ryo Kurihara supported the local pH calculation.

References

- W. Zhang, Y. Hu, L. Ma, G. Zhu, Y. Wang, X. Xue, R. Chen, S. Yang and Z. Jin, *Adv. Sci.*, 2018, **5**, 1700275.
- T. Zhang, J. C. Bui, Z. Li, A. T. Bell, A. Z. Weber and J. Wu, *Nat. Catal.*, 2022, **5**, 202–211.
- G. Zhang, Z. J. Zhao, D. Cheng, H. Li, J. Yu, Q. Wang, H. Gao, J. Guo, H. Wang, G. A. Ozin, T. Wang and J. Gong, *Nat. Commun.*, 2021, **12**, 5745.
- Z. W. She, J. Kibsgaard, C. F. Dickens, I. Chorkendorff, J. K. Nørskov and T. F. Jaramillo, *Science*, 2017, **355**, ead4998.
- T. H. M. Pham, J. Zhang, M. Li, T. H. Shen, Y. Ko, V. Tileli, W. Luo and A. Züttel, *Adv. Energy Mater.*, 2022, **12**, 2103663.
- Y. Hori, H. Wakebe, T. Tsukamoto and O. Koga, *Electrochim. Acta*, 1994, **39**, 1833–1839.
- C. T. Dinh, T. Burdyny, G. Kibria, A. Seifitokaldani, C. M. Gabardo, F. Pelayo García De Arquer, A. Kiani, J. P. Edwards, P. De Luna, O. S. Bushuyev, C. Zou,



- R. Quintero-Bermudez, Y. Pang, D. Sinton and E. H. Sargent, *Science*, 2018, **360**, 783–787.
- 8 H. Li, T. Liu, P. Wei, L. Lin, D. Gao, G. Wang and X. Bao, *Angew. Chem., Int. Ed.*, 2021, **60**, 14329–14333.
- 9 C. Chen, X. Yan, Y. Wu, S. Liu, X. Zhang, X. Sun, Q. Zhu, H. Wu and B. Han, *Angew. Chem., Int. Ed.*, 2022, **61**, e2022026.
- 10 M. Zheng, P. Wang, X. Zhi, K. Yang, Y. Jiao, J. Duan, Y. Zheng and S.-Z. Qiao, *J. Am. Chem. Soc.*, 2022, **144**, 14936–14944.
- 11 K. Kamiya, K. Fujii, M. Sugiyama and S. Nakanishi, *Chem. Lett.*, 2021, **50**, 166–179.
- 12 P. De Luna, C. Hahn, D. Higgins, S. A. Jaffer, T. F. Jaramillo and E. H. Sargent, *Science*, 2019, **364**, eaav.3506.
- 13 J. M. Spurgeon and B. Kumar, *Energy Environ. Sci.*, 2018, **11**, 1536–1551.
- 14 S. Verma, B. Kim, H. R. M. Jhong, S. Ma and P. J. A. Kenis, *ChemSusChem*, 2016, **9**, 1972–1979.
- 15 T. Burdyny and W. A. Smith, *Energy Environ. Sci.*, 2019, **12**, 1442–1453.
- 16 Z. Xing, L. Hu, D. S. Ripatti, X. Hu and X. Feng, *Nat. Commun.*, 2021, **12**, 136.
- 17 S. Ma, M. Sadakiyo, R. Luo, M. Heima, M. Yamauchi and P. J. A. Kenis, *J. Power Sources*, 2016, **301**, 219–228.
- 18 Y. C. Tan, K. B. Lee, H. Song and J. Oh, *Joule*, 2020, **4**, 1104–1120.
- 19 P. P. Yang, X. L. Zhang, F. Y. Gao, Y. R. Zheng, Z. Z. Niu, X. Yu, R. Liu, Z. Z. Wu, S. Qin, L. P. Chi, Y. Duan, T. Ma, X. S. Zheng, J. F. Zhu, H. J. Wang, M. R. Gao and S. H. Yu, *J. Am. Chem. Soc.*, 2020, **142**, 6400–6408.
- 20 T. T. H. Hoang, S. Verma, S. Ma, T. T. Fister, J. Timoshenko, A. I. Frenkel, P. J. A. Kenis and A. A. Gewirth, *J. Am. Chem. Soc.*, 2018, **140**, 5791–5797.
- 21 M. G. Kibria, C. T. Dinh, A. Seifitokaldani, P. De Luna, T. Burdyny, R. Quintero-Bermudez, M. B. Ross, O. S. Bushuyev, F. P. García de Arquer, P. Yang, D. Sinton and E. H. Sargent, *Adv. Mater.*, 2018, **30**, 1804867.
- 22 F. Li, A. Thevenon, A. Rosas-Hernández, Z. Wang, Y. Li, C. M. Gabardo, A. Ozden, C. T. Dinh, J. Li, Y. Wang, J. P. Edwards, Y. Xu, C. McCallum, L. Tao, Z. Q. Liang, M. Luo, X. Wang, H. Li, C. P. O'Brien, C. S. Tan, D. H. Nam, R. Quintero-Bermudez, T. T. Zhuang, Y. C. Li, Z. Han, R. D. Britt, D. Sinton, T. Agapie, J. C. Peters and E. H. Sargent, *Nature*, 2020, **577**, 509–513.
- 23 J. J. Lv, M. Jouny, W. Luc, W. Zhu, J. J. Zhu and F. Jiao, *Adv. Mater.*, 2018, **30**, 1803111.
- 24 T. Möller, T. Ngo Thanh, X. Wang, W. Ju, Z. Jovanov and P. Strasser, *Energy Environ. Sci.*, 2021, **14**, 5995–6006.
- 25 Z. Z. Wu, X. L. Zhang, Z. Z. Niu, F. Y. Gao, P. P. Yang, L. P. Chi, L. Shi, W. S. Wei, R. Liu, Z. Chen, S. Hu, X. Zheng and M. R. Gao, *J. Am. Chem. Soc.*, 2022, **144**, 259–269.
- 26 X. Zhang, J. Li, Y. Y. Li, Y. Jung, Y. Kuang, G. Zhu, Y. Liang and H. Dai, *J. Am. Chem. Soc.*, 2021, **143**, 3245–3255.
- 27 T. T. Zhuang, Z. Q. Liang, A. Seifitokaldani, Y. Li, P. De Luna, T. Burdyny, F. Che, F. Meng, Y. Min, R. Quintero-Bermudez, C. T. Dinh, Y. Pang, M. Zhong, B. Zhang, J. Li, P. N. Chen, X. L. Zheng, H. Liang, W. N. Ge, B. J. Ye, D. Sinton, S. H. Yu and E. H. Sargent, *Nat. Catal.*, 2018, **1**, 421–428.
- 28 F. P. García de Arquer, C. T. Dinh, A. Ozden, J. Wicks, C. McCallum, A. R. Kirmani, D. H. Nam, C. Gabardo, A. Seifitokaldani, X. Wang, Y. C. Li, F. Li, J. Edwards, L. J. Richter, S. J. Thorpe, D. Sinton and E. H. Sargent, *Science*, 2020, **367**, 661–666.
- 29 W. Ma, S. Xie, T. Liu, Q. Fan, J. Ye, F. Sun, Z. Jiang, Q. Zhang, J. Cheng and Y. Wang, *Nat. Catal.*, 2020, **3**, 478–487.
- 30 M. Ma, E. L. Clark, K. T. Therkildsen, S. Dalsgaard, I. Chorkendorff and B. Seger, *Energy Environ. Sci.*, 2020, **13**, 977–985.
- 31 J. A. Rabinowitz and M. W. Kanan, *Nat. Commun.*, 2020, **11**, 5231.
- 32 R. Xia, J. J. Lv, X. Ma and F. Jiao, *J. Catal.*, 2021, **398**, 185–191.
- 33 J. E. Huang, F. Li, A. Ozden, A. S. Rasouli, F. P. G. de Arquer, S. Liu, S. Zhang, M. Luo, X. Wang, Y. Lum, Y. Xu, K. Bertens, R. K. Miao, C. T. Dinh, D. Sinton and E. H. Sargent, *Science*, 2021, **372**, 1074–1078.
- 34 D. Cheng, Z.-J. Zhao, G. Zhang, P. Yang, L. Li, H. Gao, S. Liu, X. Chang, S. Chen, T. Wang, G. A. Ozin, Z. Liu and J. Gong, *Nat. Commun.*, 2021, **12**, 395.
- 35 X. Wang, K. Klingan, M. Klingenhof, T. Möller, J. Ferreira de Araújo, I. Martens, A. Bagger, S. Jiang, J. Rossmeisl, H. Dau and P. Strasser, *Nat. Commun.*, 2021, **12**, 794.
- 36 W. Liu, P. Zhai, A. Li, B. Wei, K. Si, Y. Wei, X. Wang, G. Zhu, Q. Chen, X. Gu, R. Zhang, W. Zhou and Y. Gong, *Nat. Commun.*, 2022, **13**, 1877.
- 37 S. Kato, K. Iwase, T. Harada, S. Nakanishi and K. Kamiya, *ACS Appl. Mater. Interfaces*, 2020, **12**, 29376–29382.
- 38 Y. Wu, K. Iwase, T. Harada, S. Nakanishi and K. Kamiya, *ACS Appl. Nano Mater.*, 2021, **4**, 4994–5003.
- 39 A. R. Heenan, J. Hamonnet and A. T. Marshall, *ACS Energy Lett.*, 2022, **7**, 2357–2361.
- 40 K. Liu, W. A. Smith and T. Burdyny, *ACS Energy Lett.*, 2019, **4**, 639–643.
- 41 M. Hussainy and D. W. Agar, *Chem. Eng. Technol.*, 2016, **39**, 2135–2141.
- 42 J. Chen and L. Wang, *Adv. Mater.*, 2021, **34**, 2103900.
- 43 J. Li, Z. Wang, C. McCallum, Y. Xu, F. Li, Y. Wang, C. M. Gabardo, C. T. Dinh, T. T. Zhuang, L. Wang, J. Y. Howe, Y. Ren, E. H. Sargent and D. Sinton, *Nat. Catal.*, 2019, **2**, 1124–1131.
- 44 J. Li, K. Chang, H. Zhang, M. He, W. A. Goddard, J. G. Chen, M. J. Cheng and Q. Lu, *ACS Catal.*, 2019, **9**, 4709–4718.
- 45 F. Li, Y. C. Li, Z. Wang, J. Li, D. H. Nam, Y. Lum, M. Luo, X. Wang, A. Ozden, S. F. Hung, B. Chen, Y. Wang, J. Wicks, Y. Xu, Y. Li, C. M. Gabardo, C. T. Dinh, Y. Wang, T. T. Zhuang, D. Sinton and E. H. Sargent, *Nat. Catal.*, 2020, **3**, 75–82.
- 46 X. Lu, C. Zhu, Z. Wu, J. Xuan, J. S. Francisco and H. Wang, *J. Am. Chem. Soc.*, 2020, **142**, 15438–15444.
- 47 E. R. Cofell, U. O. Nwabara, S. S. Bhargava, D. E. Henckel and P. J. A. Kenis, *ACS Appl. Mater. Interfaces*, 2021, **13**, 15132–15142.
- 48 K. Junge Puring, D. Siegmund, J. Timm, F. Möllenbruck, S. Schemme, R. Marschall and U. P. Apfel, *Adv. Sustainable Syst.*, 2021, **5**, 2000088.



- 49 K. Yang, R. Kas, W. A. Smith and T. Burdyny, *ACS Energy Lett.*, 2021, **6**, 33–40.
- 50 Y. Huang, A. D. Handoko, P. Hirunsit and B. S. Yeo, *ACS Catal.*, 2017, **7**, 1749–1756.
- 51 K. P. Kuhl, E. R. Cave, D. N. Abram and T. F. Jaramillo, *Energy Environ. Sci.*, 2012, **5**, 7050–7059.
- 52 K. Manthiram, B. J. Beberwyck and A. P. Alivisatos, *J. Am. Chem. Soc.*, 2014, **136**, 13319–13325.
- 53 Y. Kong, H. Hu, M. Liu, Y. Hou, V. Kolivoška, S. Vesztergom and P. Broekmann, *J. Catal.*, 2022, **408**, 1–8.
- 54 Y. Wu, S. Garg, M. Li, M. N. Idros, Z. Li, R. Lin, J. Chen, G. Wang and T. E. Rufford, *J. Power Sources*, 2022, **522**, 230998.

