



Cite this: *Nat. Prod. Rep.*, 2017, **34**, 815

# Conformational control of the bacterial Clp protease by natural product antibiotics

I. T. Malik  and H. Brötz-Oesterhelt \*

Covering: up to 2017

The bacterial Clp protease is a highly conserved and structurally versatile machine. It has gained a lot of recognition during the last decade as a novel antibacterial drug target with an unprecedented mechanism of action. Due to its complexity, there are distinct means of interfering with its natural functions and several compounds targeting this machine have been identified. In this review, we summarize the current state of knowledge about natural products deregulating Clp proteolysis, a crucial and delicate process within the cell. Among those, acyldepsipeptide antibiotics of the ADEP class (ADEPs) are characterized best. The molecular mechanism of ADEP-mediated deregulation sheds light on the inner workings of the Clp protease.

Received 24th December 2016

DOI: 10.1039/c6np00125d

rsc.li/npr

1	<b>Introduction</b>
2	<b>ClpP structure and function</b>
2.1	ClpP and AAA+ chaperones regulate protein homeostasis, stress response, cellular differentiation, and virulence
2.2	ClpP forms the proteolytic core of a compartmentalized protease
2.3	The apical side of the ClpP barrel harbours interaction sites for the cognate Clp-ATPases
2.4	Proteolysis by ClpP is tightly regulated
3	<b>Deregulation of the Clp protease by natural products</b>
3.1	Uncontrolled ClpP activity is bactericidal
3.2	ClpP in complex with ADEP adopts an “open-gate”-conformation
3.3	Disruption of the functional ClpP–Clp-ATPase interaction kills mycobacteria
3.3.1	Cyclomarin A
3.3.2	Lassomycin
3.3.3	Ecumicin and RUF-I
3.3.4	Acyldepsipeptides
4	<b>Molecular interaction between ADEP and ClpP</b>
4.1	<b>ADEP structure–activity–relationship (SAR)</b>
4.1.1	ADEP4
4.1.2	ADEP4 <i>N</i> -acylphenylalanine moiety
4.1.3	B315
4.1.4	Compound 26
4.2	<b>ADEP – biological activity</b>

4.3	<b>Interaction of ADEP with the hydrophobic pocket of ClpP</b>
4.4	<b>ADEP exerts conformational control over the entire ClpP barrel</b>
4.5	<b>Comparison between ADEP-mediated and Clp-ATPase-mediated activation of ClpP</b>
5	<b>Outlook</b>
6	<b>Acknowledgements</b>
7	<b>References</b>

## 1 Introduction

Bacterial resistances towards antibiotics pose a huge problem for the treatment of infectious diseases.<sup>1,2</sup> Until recently, antibiotic development largely relied on synthetic modifications of established antibiotic classes to overcome resistances by compound derivatization. However, this source is running dry and new antibiotic classes with unprecedented core structures are urgently needed to overcome the plethora of resistance mechanisms spreading through the bacterial population. Antibacterial agents with unrelated chemical scaffolds often act by novel mechanisms of bacterial growth inhibition and are less affected by widespread resistance traits. New means of killing multi-drug resistant bacteria must be found.

Microbial natural products are a privileged source of antibacterial lead structures. Being produced by microorganisms themselves and optimized through co-evolution with bacterial competitors for billions of years, they often surpass synthetic comparators with regard to cell entry and complex target interactions.<sup>3,4</sup> Most antibiotics in therapeutic use to date inhibit essential functions in DNA, RNA, protein or cell wall

Department of Microbial Bioactive Compounds, Interfaculty Institute of Microbiology and Infection Medicine, University of Tuebingen, Germany. E-mail: heike.broetz-oesterhelt@uni-tuebingen.de



syntheses, whereas daptomycin and polymyxins interfere with membrane integrity, but rarely is a completely unrelated mode of action described for a novel antibacterial agent with good tolerance and promising efficacy in infection models.

During the last decade, a bacterial protease has emerged as an unprecedented antibacterial target in the course of mode of action studies on acyldepsipeptide antibiotics (ADEPs). Isolated from the fermentation broth of *Streptomyces hawaiiensis*, the natural products A54556 A and B (factor A and B) showed good antibiotic activity *in vitro* without mechanism-based cross-resistance to other known antibiotics.<sup>5,6</sup> Identification of the resistance-mediating mutation within an ADEP-resistant *Escherichia coli* mutant and affinity chromatography with an immobilized ADEP congener led to ClpP as the direct target.<sup>6</sup> Medicinal chemistry campaigns established the structure–activity relationship and yielded a number of derivatives with enhanced *in vitro* potency and stability.<sup>7–10</sup> Furthermore, ADEP treatment proved successful in lethal bacterial infections in rodents, including deep-seated biofilm infections, and, in combination with *e.g.* rifampicin, eradicated persister cells of methicillin-resistant *Staphylococcus aureus*.<sup>6,7,11</sup>

ClpP is a serine peptidase with active sites shielded within its barrel shaped proteolytic chamber. It can only degrade peptides on its own but is capable of protein degradation when partnering with a cognate Clp/Hsp100 chaperone (Clp-ATPase). As ClpP can act in conjunction with several Clp-ATPases, the resulting proteolytic complexes differ in their respective Hsp100 module. However, as they uniquely contain ClpP as the proteolytic core, we will refer to the complex consisting of ClpP and any corresponding Clp-ATPase as the “Clp protease”. The

Clp protease system has a multitude of functions in bacteria, including protein quality control and homeostasis, stress management, virulence factor expression, and regulation of cell differentiation programmes.<sup>12–14</sup> Its function is also essential for viability in actinobacteria including *Mycobacterium tuberculosis*.<sup>15</sup>

Following the first reports on ADEP, other natural products were recently discovered to modulate, *i.e.* inhibit or activate, either the proteolytic core ClpP or its Hsp100 partners. In this review, while briefly touching on the promising biological activities of these compounds, we will focus on the intriguing mechanistic interaction between the Clp protease system and its natural product modulators. Among those, ADEP is best understood. The interplay between ClpP and ADEP stands representative for a new principle of killing bacteria by targeting and deregulating a protease system. Furthermore, ADEPs are instrumental in understanding the molecular operation mode of the complex Clp protease machinery.

## 2 ClpP structure and function

### 2.1 ClpP and AAA+ chaperones regulate protein homeostasis, stress response, cellular differentiation, and virulence

The Clp protease system is widely conserved within the bacterial domain and is functionally organized in two separate compartments. The Clp/Hsp100 enzymes of the AAA+ super family of chaperones (Clp-ATPases) select substrates for degradation, unfold and thread them into the proteolytically active ClpP in an ATP-dependent fashion. There is a number of different Clp-ATPases that associate with ClpP for protein degradation, *e.g.* ClpX and ClpA in *E. coli*, ClpX and ClpC in *Staphylococcus aureus*, ClpX and ClpC1 in *Mycobacterium tuberculosis*, to name a few. Each shows distinct substrate specificities and performs different cellular functions, albeit there are some redundancies. In the beginning, the characterization of the Clp protease took place primarily in non-pathogenic *E. coli* and *Bacillus subtilis* strains. In *E. coli*, loss-of-function of ClpP or Clp-ATPases causes only a mild phenotype, as here, the Clp system shares functions in protein homeostasis with the Lon protease.<sup>16,17</sup> In *B. subtilis*, *clpP* deletion prevents motility, sporulation and genetic competence.<sup>18</sup> Heat tolerance and stationary phase survival are also reduced and accumulation of the stress regulator Spx in a *clpP* or *clpX* mutant is toxic and impairs growth.<sup>18,19</sup> Trapping experiments with a proteolytically inactive ClpP variant revealed protein substrates with important functions in global stress management, cell division, global transcription regulation, DNA damage repair, and protein synthesis.<sup>13,20</sup> Meanwhile, the Clp protease is validated as a drug target in pathogenic organisms, as recently reviewed.<sup>21–23</sup> For instance, in *S. aureus*, the Clp protease is responsible for stress tolerance and involved in virulence regulation.<sup>24,25</sup> *clpP* and *clpX* deletions were shown to attenuate *S. aureus* in a murine skin abscess model and a *Staphylococcus epidermidis clpP* deletion mutant proved less virulent in a catheter infection in rats.<sup>26,27</sup> A synthetic  $\beta$ -lactone acting as a covalent suicide inhibitor of ClpP was effective in



*Imran T. Malik received his diploma in Biology from Freiburg University in 2012. Currently, he is pursuing his Ph.D. in Microbiology at the Eberhard Karls University of Tübingen. His main field of interest is the biochemical and structural characterization of large proteolytic machineries by means of enzymatic assays and fluorescence spectroscopy.*



*Heike Brötz-Oesterhelt is a professor for Microbiology at the University of Tuebingen. For more than 20 years, she has worked in the field of antibacterial drug discovery in the academic as well as in the pharmaceutical industry setting. She is particularly interested in molecular mode of action studies of new antibiotic lead structures.*



treating staphylococcal skin abscesses in mice, demonstrating druggability of ClpP's catalytic triad.<sup>28</sup> *clpP* deletions further prevented *Streptococcus pneumoniae* from colonizing the nasopharynx and infecting lungs of mice, and reduced survival of *Listeria monocytogenes* within macrophages.<sup>29,30</sup> While the Clp-ATPases and the ClpP peptidase work together in general degradation of misfolded and aggregated proteins as well as in directed regulatory proteolysis, Clp-ATPases also possess chaperone activity independently of the peptidase.<sup>31,32</sup> They can actively induce structural changes within their substrates altering their biological activity. For instance, one of the first characterized substrates of *E. coli* ClpX was the Mu transposase.<sup>33</sup> ClpX alters its conformation and thereby initiates the transition from recombination to Mu phage replication without the need of a partner peptidase.<sup>33,34</sup> Secondly, expression of *spa*, the gene encoding protein A in *S. aureus*, is nearly abolished in a *clpX* but not a *clpP* mutant.<sup>26</sup> Protein A is a virulence factor expressed in the early growth phase and hampers detection by the host immune system. It is under negative regulatory control of the accessory gene regulator (*agr*) quorum sensing system, which is activated in the late exponential phase of growth and down-regulates protein A expression by post-transcriptional inhibition.<sup>35,36</sup> The repression of *spa* in a *clpX* mutant works independently of *agr* and counteracts the normally occurring derepression in an *agr* negative strain.<sup>24</sup> ClpC in *S. aureus* plays an important role in acetate catabolism and has been further characterized as a global regulator in late growth phase carbon metabolism.<sup>37,38</sup> In *M. tuberculosis*, the entire Clp protease system including the chaperones ClpX, ClpC1 and ClpB as well as the two ClpP paralogs, ClpP1 and ClpP2, is essential for growth.<sup>15,39–42</sup> Compounds targeting the ClpC1 ATPase in mycobacteria display potent antibacterial activity. In Gram-negatives, the Clp protease regulates expression of the type III secretion system and a lack of functional ClpX and ClpP results in severely attenuated or abolished virulence.<sup>43–45</sup> Reviewed examples and similar reports established the Clp protease as a promising novel drug target.

## 2.2 ClpP forms the proteolytic core of a compartmentalized protease

Fourteen ClpP protomers arrange themselves to form a tetradecameric barrel-shaped complex in a stack of two heptameric rings (Fig. 1a). The catalytic residues are located within the sequestered space of the barrel. Seven hydrophobic pockets on both sides of the barrel serve as anchors for partner Clp-ATPases during translocation of substrates into the proteolytic chamber of ClpP (Fig. 2).<sup>46,47</sup> Several crystal structures of ClpP from different species have revealed distinct barrel conformations, namely compressed, compact and extended state.<sup>48–52</sup> Based on molecular dynamics (MD) simulation experiments, the compact conformation has been speculated to represent a stable intermediate state between extended and compressed, showing a local energy minimum during transitions between extended and compressed conformations.<sup>48</sup> Here, we focus only on the two end-points of this transition (Fig. 1a). The compressed conformation, about 80 Å in height, is deemed to

be inactive because of the arrangement of the active site residues with an increased distance between the serine and the histidine side chain, whereas crystal structures of extended conformations, where the barrel is elongated by approximately 10 Å along the rotational axis, show the active site residues in reduced distance (Fig. 1a).<sup>49,53–55</sup> In the course of the nucleophilic attack of the active site serine on the electron deficient carbonyl carbon of the peptide bond, the proton of the serine hydroxyl group is abstracted by the histidine imidazole and the positive charge thereby generated at the histidine imidazole is stabilized by the carboxyl function of the aspartate (Fig. 1b). The resulting acyl-ester intermediate then undergoes hydrolysis and the serine side chain is regenerated to undergo the next cycle of catalysis. In the catalytically competent conformation, these three side chains are in the correct distance to form hydrogen bonds (see green dotted lines in Fig. 1b), which strongly enhance nucleophilicity of the serine. This competent conformation has so far only been observed in crystal structures that captured ClpP in the extended conformation, but never in crystals containing compressed conformations. Notably, other key structural elements show considerable shifts between the two conformations in X-ray crystallography structures. These shifts correlate with predicted residue flexibility from MD simulation experiments.<sup>55</sup> The most flexible domains of a ClpP protomer are the N-terminal loop and the  $\alpha 5$ -helix. The latter is associated with the ring-ring interface in the equatorial plane and is also known as the handle region.<sup>50</sup> The handle of each ClpP subunit adopts a straight orientation in the extended conformation while it is kinked in the compressed structure (Fig. 1a). The physiological significance of these conformations and their regulation are still subject to investigation.<sup>49,51</sup> A crystal structure of ClpP with an inhibitor covalently bound to the active site displayed a slightly more compacted conformation, corroborating the idea of a functional link between conformation and catalysis.<sup>56</sup> One model proposes an exit route for peptide products *via* transient equatorial pore openings in the compressed situation with the compression motion being part of a natural cycle of ClpP dynamics.<sup>57–61</sup> Introducing covalent cross-links between handle regions of neighbouring ClpP subunits resulted in decreased handle flexibility and displayed increased substrate retention times within the ClpP lumen.<sup>59</sup> This finding strongly supports the idea of an involvement of the handle region in product release. Nonetheless, product release *via* the axial pores or a combination of both cannot be ruled out, yet. While most compressed crystal structures of ClpP show a disordered tip of the  $\alpha 5$ -helix, two structures from *S. aureus* reveal a kinked orientation.<sup>49,55</sup> In this state, the handle is stabilized by hydrogen bonds within its own subunit.<sup>48</sup> In the extended state, a straight  $\alpha 5$ -helix is involved in a network of hydrogen bonds stabilizing the ring-ring connection between the two heptamers.<sup>55</sup> This network of hydrogen bonds connects the tip of the extended helix of one ClpP subunit (Fig. 1a, green helix) to amino acid residues in the  $\alpha 6$ -helix of the opposing ClpP subunit (Fig. 1a, red helix). Mutation studies of these amino acid residues termed “oligomerization sensors” showed defects in oligomeric state formation and catalytic capabilities, stressing the importance of the handle to make contact to the opposing ring.<sup>51</sup>







**Fig. 1** The proteolytic core of the Clp protease, ClpP. (a) Crystal structures of ClpP from *S. aureus*. Overview of the ClpP architecture both in active extended (PDB code: 3V5E) and in inactive compressed conformation (pdp code: 3qwd). Two opposing subunits are highlighted in colour. The  $\alpha 5$  and  $\alpha 6$  helices responsible for the ring–ring connection are coloured in green and red, respectively. The top and inside views are depicted in a surface fill model representation. The inside view reveals the catalytic sites within the barrel and the orientations of the residue side chains. The histidine side chain imidazole is rotated away from the hydrolytic serine hydroxyl function in the inactive arrangement and cannot form a hydrogen bond. The hydrogen bond network required to stabilize the reaction intermediate cannot be formed. (b) Catalytic mechanism of the model serine protease ClpP. Key interactions within the catalytic triad during peptide bond cleavage are indicated (reaction details are given in the text).

Interestingly, MD simulations indicate a tendency towards the compressed state in the absence of the hydrogen bond network due to favourable thermodynamics.<sup>48,55</sup> Therefore, it can be assumed that control over the conformational state is part of a protection system in the cell that requires the proteolytic extended form to be actively promoted.

### 2.3 The apical side of the ClpP barrel harbours interaction sites for the cognate Clp-ATPases

In the absence of a cognate Clp-ATPase, ClpP can only degrade small peptides.<sup>62,63</sup> The axial channels are the only opening into the catalytic chamber of ClpP.<sup>64,65</sup> These channels are bordered by the respective N-termini of the ClpP subunits (Fig. 2). A crystal

structure of *E. coli* ClpP in the apo form displayed an “up”-conformation of the N-terminus at one apical side and a “down”-conformation at the opposite side suggesting a gating functionality of the N-terminus for substrate entry.<sup>66</sup> Although the N-terminal residues of the “down”-conformation are unresolved, it has been proposed that in this conformation, clustering of hydrophobic residues within the axial channel serves as a hydrophobic plug and presents the closed gate of ClpP.<sup>67</sup> Interestingly, the observation that only six out of seven N-terminal loops were in the “up”-conformation led the authors to speculate about a pseudo-6-fold symmetry matching the 6-fold symmetry of the partner Clp-ATPase.<sup>66</sup> Cryo-EM studies with a ClpP tetradecamer bound to a ClpA hexamer at one apical side only, showed an open channel with a diameter of 12 Å at the apical side facing ClpA,





**Fig. 2** View on the apical surface of a ClpP tetradecamer from *E. coli*. (a) "down"-conformation of the N-terminus of ClpP (PDB code: 1YG6): two neighbouring ClpP subunits are coloured in shades of blue, the hydrophobic pockets, each spanning two ClpP subunits, are highlighted in green. The N-terminal loops (yellow) surrounding the axial pore are disordered and close the channel by serving as a hydrophobic plug. (b) "open gate"-conformation of the N-terminus of the ClpP/ADEP-complex (PDB code: 3MT6). In the representation of the N-terminal loops, strength of the ribbon correlates with flexibility. Three loops are completely resolved and show a  $\beta$ -hairpin structure that points upwards. Flexibility of the N-terminal loops increases towards the tip region, indicated by unresolved structures in the four other loops. In contrast to the "up"-conformation reported for apo-ClpP, this structure has an increased pore diameter of 20 Å. (c) Top view of the structured axial channel in the apo form of ClpP in the "up"-conformation (left) and the widened pore of ClpP in complex with ADEP (right).

forming a continuous channel with the Clp-ATPase.<sup>68</sup> The N-terminal domain of ClpP on the ClpA-free side was blocked. Whether the "up"-conformation observed in the *E. coli* ClpP crystal (*i.e.* the state with upraised N-termini yet narrow pore diameter) resembles the open gate in the natural context when bound to Clp-ATPases, is still controversially discussed. Alexopoulos *et al.* argue that this "up"-conformation might not be identical to the Clp-ATPase-bound open conformation in the substrate feeding process.<sup>69</sup> For more details on N-terminal gating, refer to ref. 69. Structural investigations with the help of ADEP activators, which mimic binding of Clp-ATPases by employing the same binding pocket, have been instrumental in addressing the question of how these conformations are related to pore gating (compare Section 3.2).<sup>53,69,70</sup> Furthermore, it was suggested that the "up"-conformation stabilizes the intermediate substrate-bound form of ClpP while the "down"-conformation facilitates substrate hydrolysis, thus directly involving the N-terminus in the catalytic cycle of ClpP.<sup>71</sup>

#### 2.4 Proteolysis by ClpP is tightly regulated

Substrates tagged with a degradation signal like the C-terminal ssrA-tag for incomplete translation of nascent polypeptide

chains are recognized and bound by ClpX.<sup>72,73</sup> Subsequently, ClpX assembles into hexamers and makes contact with ClpP by binding to the hydrophobic pockets *via* loops containing highly conserved (L/I/V)-GF tripeptide motifs necessary for association with ClpP and by binding the N-terminal stem loop of ClpP *via* its pore-2-loops.<sup>46,47,74</sup> ATP binding and hydrolysis by ClpX then provides the energy to mechanically unfold and translocate linearized protein into ClpP.<sup>75–78</sup> Within the proteolytic chamber, substrate is cleaved into small peptide fragments of around 6–8 residues (Fig. 3).<sup>79,80</sup> Thus, substrate specificity is not defined by the amino acid sequence rather than by Clp-ATPases that recognize specific degradation signals and interact with certain adaptor proteins.<sup>20,73,81–83</sup> Exposure to the active site residues is sufficient for cleavage with no strict specificity, albeit a preference for certain amino acids at the P1 position exists.<sup>84,85</sup>

The Clp protease is a paradigm of self-compartmentalized proteases and shares typical architectural features with other compartmentalized proteases like HslUV or the 26S proteasome. The term self-compartmentalized expresses that the active sites reside within a proteolytic chamber ("compartment"), which is shielded from the cytoplasm and inaccessible to potential protein substrates (Fig. 3a). Cleavage is performed in this sequestered space only after active unfolding and translocation of substrate through the narrow axial pores by Clp-ATPases (Fig. 3b). These in turn select substrates by either decisive degradation signals, through contacts mediated by specific adaptor proteins, or a combination of both. Furthermore, binding of Clp-ATPases to ClpP initiates structural reorganizations within ClpP that render substrate cleavage possible.<sup>68,86</sup> Findings derived from the interaction of ClpP with ADEPs strongly contributed to our understanding of these reorganizations (see below).<sup>53,67,69,70,87</sup> In the case of *B. subtilis* ClpP, protomers do not assemble to a barrel *in vitro* unless either ClpX or ClpC is active to bind and deliver substrate.<sup>88</sup> Architectural restrictions are common among these proteolytic machines; they prohibit uncontrolled substrate processing and serve as safeguards against potentially harmful self-digest.<sup>89</sup>

## 3 Deregulation of the Clp protease by natural products

### 3.1 Uncontrolled ClpP activity is bactericidal

ADEP mimics binding of Clp-ATPases to the hydrophobic pockets. This event inhibits association of ClpP with Clp-ATPases, and thereby abolishes all natural functions of the Clp protease that require Clp-ATPase mediated degradation (Fig. 3c).<sup>90,91</sup> The affinity of ADEP for ClpP with a  $K_D$  of approximately 2  $\mu$ M is much stronger compared to the Clp-ATPases, as a single ADEP molecule is sufficient for displacing a full ClpX hexamer.<sup>91</sup> Clp protease function is essential for stress regulation and virulence in firmicutes. But, disturbing the ClpP-Clp-ATPase interaction under non-stressing *in vitro* conditions alone does not result in cell death as exemplified by *clpP* and *clpX* deletion mutants.<sup>12,21,22</sup> Likewise covalent  $\beta$ -lactone inhibitors of ClpP lead to decreased virulence factor excretion in *S.*





**Fig. 3** Operation mode of the Clp protease system and deregulation by ADEP. (a) In the dormant, inactive state the ClpP barrel is either not assembled or, if already assembled, the axial pores are closed. Proteins are not degraded by ClpP when on its own. (b) In the natural context, substrates are recognized by the Clp-ATPase via specific degradation tags and with the aid of adaptor proteins. The Clp-ATPase docks to the “hydrophobic pockets” of ClpP via surface loops presenting a conserved tripeptide signal, thereby initiating assembly of the ClpP tetradecamer in a conformation competent for catalysis. Furthermore, the Clp-ATPase actively unfolds the protein substrate using ATP hydrolysis and threads it into the entry pores of the catalytic chamber. (c) ADEP binding to the “hydrophobic pockets” of ClpP also assembles the ClpP barrel in a catalytically competent state. By steric hindrance, ADEP efficiently prevents the interaction of ClpP with the Clp-ATPases. As one consequence, none of the natural protein substrates can be degraded any more. As a second consequence, ClpP pores open and some protein substrates and nascent polypeptide chains necessary for bacterial growth and survival are now degraded (dual mechanism). Degradation tags are not required for ADEP-mediated protein degradation.

*aureus* but show no growth inhibition in *in vitro* assays for antibacterial activity.<sup>92</sup>

The ADEP mode of killing in firmicutes is uncontrolled proteolysis by the ClpP/ADEP complex, *i.e.* proteins that are not tagged for degradation or recognized by adaptor proteins are still unspecifically targeted by ClpP. ADEP binding circumvents the above mentioned safeguards and initiates structural shifts that enable ClpP to degrade the loosely folded model substrate casein and nascent polypeptide chains in an unregulated fashion.<sup>2,37,70</sup> The overactivated ClpP causes degradation of bacterial cell division protein FtsZ, as demonstrated in *B. subtilis*, *S. aureus*, and *Wolbachia* sp., resulting in cell division inhibition and eventually cell death.<sup>93,94</sup> Furthermore, Conlon *et al.* performed proteomic analysis of non-replicating methicillin-resistant *S. aureus* after long-term exposure to ADEP and identified decreased abundance in 417 proteins compared to a non-treated control.<sup>11</sup>

Besides acyldepsipeptide antibiotics, a number of compounds have been described to target the Clp protease (Fig. 4). A non-peptide-based natural product activator of ClpP, sclerotiamide, has recently been identified in a screening for  $\beta$ -casein degradation.<sup>95</sup> As of yet, there is no available data on neither the mechanism of ClpP binding nor antibacterial activity of this compound. In comparison to the natural product ADEP1, casein degradation was slow and rather high concentrations of sclerotiamide were required. Furthermore, sclerotiamide activity was restricted to ClpP from *E. coli* and ClpP from *B. subtilis* could not be activated. So far, ADEP is the only

natural product activator that is confirmed to target ClpP from a wide variety of organisms.

### 3.2 ClpP in complex with ADEP adopts an “open-gate”-conformation

The ClpP/ADEP complex adopts a proteolytically active conformation strongly resembling the extended form of apo-ClpP, yet distinct, because of an increased diameter of the axial pores (Fig. 2).<sup>53,70</sup> The crystal structure of *E. coli* ClpP in complex with ADEPs shows the N-terminal loop pointing upwards, similar to the “up”-conformation of apo ClpP, but with a widened axial pore of 20 Å in diameter, henceforth referred to as the “open gate”-conformation (Fig. 2b).<sup>70</sup> It is not yet known, if such an increased diameter which was not observed in the cryo-EM structure of the *E. coli* ClpP/ClpA complex (“ClpAP”) might present a special case exclusive to the ClpP/ADEP complex or if it occurs in a similar form also during the ClpP/Clp-ATPase interaction. In contrast to the structured terminal  $\beta$ -hairpins of the *E. coli* ClpP/ADEP crystals, the axial pores seemed unstructured in ClpP crystals from *B. subtilis* in complex with ADEP. This difference was attributed to tight packing of the *B. subtilis* ClpP/ADEP complexes in the crystals, while the *E. coli* crystals showed less tight packing in the N-terminal region. Thus, it was proposed that the N-terminal loops of ClpP/ADEP indeed form a structured channel (Fig. 2b).<sup>69,96</sup> Bound ADEP molecules provide additional hydrophobic anchor points for the N-terminal tail of ClpP.<sup>67</sup> The whole ClpP/ADEP complex







Fig. 4 Natural product modulators of the Clp protease.

displays reduced structural flexibility, as demonstrated in hydrogen/deuterium exchange experiments.<sup>67</sup> In this study, ClpP was incubated in a deuterated solution both in absence and in presence of ADEP1. Hydrogen/deuterium exchange as a measure of flexibility occurred to a lesser extent in the presence of ADEP1, especially in the equatorial plane where the  $\alpha$ 5-helices are located.<sup>67</sup> This finding underlines the allosteric nature of the ClpP/ADEP interaction. Structural dynamics in regions of the ClpP macromolecule distant from the ADEP binding site are affected. For some years, pore gating has been considered to be the only structural determinant of ADEP-mediated activation. However, recent data reveal additional activating rearrangements (see below).

### 3.3 Disruption of the functional ClpP–Clp-ATPase interaction kills mycobacteria

**3.3.1 Cyclomarine A.** A non-ribosomal cyclic heptapeptide called cyclomarin A (CymA, Fig. 4) was isolated from a marine streptomycete.<sup>97</sup> It was later found to show potent bactericidal activity against a panel of multidrug-resistant *M. tuberculosis* strains suggesting a novel mechanism of action.<sup>98</sup> Subjecting non-replicating persisters to 2.5  $\mu$ M of CymA killed 90% of the initial inoculum within 5 days. The resistance frequency was below  $10^{-9}$  and attempts to select for a resistant mutant failed.<sup>98</sup> The antibacterial activity of CymA was specific to mycobacteria whereas five other strains, Gram-positive and Gram-negative



alike, were non-susceptible. Affinity chromatography with an immobilized cyclomarin A derivative was performed and revealed the mycobacterial Clp/Hsp100 chaperone ClpC1 as the molecular target. Expression of selective domains of ClpC1 showed that CymA binds to the N-terminal domain.<sup>99</sup> In *B. subtilis* ClpC, substrate specificity and recognition is mediated by either adaptor proteins like MecA or arginine phosphorylation of substrate by McsB.<sup>88,100–102</sup> Both MecA and phosphate-marked substrates bind to the N-terminal domain of ClpC. A requirement for adaptor-mediated substrate delivery has not been reported for mycobacterial ClpC1, so far, and ClpP1P2 is capable of *in vitro* casein degradation with the help of ClpC1 alone. There is evidence, however, that PknB-mediated phosphorylation is a determinant of substrate binding by ClpC1 in mycobacteria.<sup>103</sup> Crystal structures demonstrate that CymA binding to ClpC1 occurs close to a region that corresponds to the MecA interacting site of ClpC from *B. subtilis*.<sup>99,104</sup> The precise mode of action is still to be investigated, but an involvement of CymA in ClpC1 substrate recognition is discussed. Vasudevan *et al.* proposed that CymA binding decreases flexibility in the ClpC1 N-terminal domains, rendering its substrate entry pore more accessible.<sup>99</sup> They furthermore interpreted a decreased GFP signal in *Mycobacterium smegmatis* upon treatment with CymA as an increased *in vivo* GFP degradation activity of the CymA stimulated Clp protease.<sup>98</sup> On a cautionary note, decrease of GFP fluorescence has also been observed *in vitro* as a result of *E. coli* Clp-ATPase mediated unfolding activity, independent of degradation.<sup>46,105</sup> Therefore, it has been rightly stated that uncoupling the Clp-ATPase from proteolysis, as is the case for other compounds binding to ClpC1 (see below), is also an option for the CymA mode of action.<sup>23</sup> On a side note, the natural congener cyclomarin C, which has been co-isolated with cyclomarin A, also displays potent antitubercular activity with a minimal inhibitory concentration (MIC) value of 0.1  $\mu\text{g ml}^{-1}$ .

Other natural compounds that specifically target the mycobacterial ClpC1 chaperone are lassomycin, ecumicin and a recently reported rufomycin analogue.<sup>106–108</sup>

**3.3.2 Lassomycin.** Lassomycin (Fig. 4) is a ribosomally synthesized peptide and consists of 16 amino acids. After posttranslational modification, an intramolecular amide bond is formed between the N-terminus and the carboxyl side chain of aspartic acid at position 8 resulting in a “lasso”-like structure. MIC values selectively for *Mycobacterium tuberculosis* are in the range of 0.8–3  $\mu\text{g ml}^{-1}$  including multidrug-resistant strains.<sup>106</sup> Genome sequencing of six resistant mutants showed mutations in the *clpC1* gene.<sup>106</sup> Like cyclomarin A, lassomycin binds the N-terminal domain of ClpC1, which results in two functional anomalies. Firstly, ATP hydrolysis rate is increased and, secondly, degradation of the model substrate casein by the ClpC1P1P2 complex is abolished. Whether cell death stems from increased unfolding activity in the wake of pronounced ATP hydrolysis or from attenuated substrate degradation by ClpP1P2 is still unknown.

**3.3.3 Ecumicin and RUF-I.** Ecumicin (Fig. 4) is a non-ribosomal cyclic tridecapeptide, originating from a *Nomonuraea* strain with strong antitubercular activity against resistant

mycobacteria with MICs in the range of marketed antibiotics and no detected cytotoxicity.<sup>107,109,110</sup> Resistant mutants revealed mutations in the N-terminal region of ClpC1. Like lassomycin, ecumicin uncouples ClpC1 from ClpP1P2 proteolysis and increases ATPase activity several fold.<sup>110</sup>

The effort to find new antitubercular compounds also led to the discovery of RUF-I, an analogue of the natural product rufomycin, with so far undisclosed structure.<sup>108</sup> RUF-I was also reported to target ClpC1, but so far, little information is available on this compound.<sup>108</sup> An initial study showed no cross-resistance between ecumicin and rufomycin and resistant clones generated by exposure to either ecumicin or rufomycin, showed distinct single point mutations in *clpC1*, implicating different binding modes.

**3.3.4 Acyldepsipeptides.** Unlike the ClpC1 binders, ADEPs display only a moderate antitubercular activity with a MIC of 25  $\mu\text{g ml}^{-1}$  for ADEP2, the most potent congener tested, which is in strong contrast to the nanomolar MIC values that ADEPs show against firmicutes.<sup>40</sup> Ollinger *et al.* argued, that efflux in mycobacteria might strongly effect ADEP potency, but the efflux-mediated effects measured were mild and even combining two efflux pump inhibitors, reserpine and verapamil, did only improve ADEP activity about twofold.<sup>40</sup> Although some contribution of efflux cannot be disregarded, impaired uptake through the mycobacterial cell envelope and a different mode of action of ADEP in mycobacteria compared to firmicutes might more strongly account for the difference in potency. A conditional *clpP1P2* knockdown strain in *Mycobacterium bovis* revealed an increased susceptibility to ADEP at reduced ClpP1P2 levels.<sup>111</sup> This behavior is in stark contrast to *B. subtilis*, where down-regulation of ClpP leads to increased resistance, and indicates that ADEP acts through inhibition of Clp protease function in mycobacteria.<sup>111</sup> Furthermore, while ADEP was able to activate mycobacterial ClpP1P2 to degrade casein *in vitro*, this was only possible when agonist peptides, such as carboxybenzyl-leucyl-leucine (Z-LL), were also present, and ADEP was inferior to ClpC1 in activating ClpP1P2. Mycobacterial ClpP1P2 is special in its requirement for certain N-blocked agonist peptides for activation *in vitro*.<sup>87,112</sup> It was suggested that ClpP1P2 activation within the mycobacterial cell requires binding of the partner Clp-ATPase in combination with active delivery of protein substrate.<sup>113</sup> In accordance, ADEP induced *in vitro* casein digestion by ClpP1P2 only when the substrate mimetic Z-LL was also present and could not activate ClpP1P2 independently.<sup>111</sup> In contrast, ADEP alone efficiently suppressed association of ClpP1P2 with both ClpC1 and ClpX *in vitro*.<sup>87,111</sup> Unlike firmicutes, Clp protease activity is essential for growth of mycobacteria under all conditions and proteomic studies in a ClpP1P2 knockout strain showed the accumulation of the toxic transcription factor WhiB.<sup>114</sup> Based on the mode of action data available, ADEP kills mycobacteria by abrogating the communication of ClpP1P2 with its partnering Clp-ATPases and consequently by inhibiting the natural functions of the Clp protease system. ClpC1 binders like ecumicin or lassomycin also disturb communication between ClpC1 and ClpP1P2, but they additionally affect ATPase activity of ClpC1 which probably also perturbs ClpP1P2-independent functions of the chaperone. The





higher potency of these compounds might, at least in part, be attributed to this additional mechanistic effect. In addition, increased uptake might occur.

## 4 Molecular interaction between ADEP and ClpP

### 4.1 ADEP structure–activity-relationship (SAR)

**4.1.1 ADEP4.** The main component of the acyldepsipeptide A54556 natural product complex termed ADEP1 (A54556 factor A, Fig. 5) consists of a peptidolactone macrocyclic core coupled to an *N*-acylphenylalanine moiety *via* an amide bond.<sup>5,6</sup> Importantly, the structure suggested in the original patent from 1985 was not correct as it indicated a methyl group at the proline moiety which is coloured in black in Fig. 5.<sup>5</sup> Fig. 4 and 5 depict the structure that was later revised, carrying the methyl group at the other proline residue (blue in Fig. 5).<sup>7</sup> ADEP1 showed already good antibacterial activity *in vitro* against enterococci, including vancomycin-resistant strains (VRE), streptococci, including penicillin-resistant *Streptococcus pneumoniae* (PRSP), as well as moderate activity against staphylococci, including methicillin-resistant *S. aureus* (MRSA).<sup>6</sup> Limitations in potency and chemical as well as metabolic stability were addressed in a derivatization program.<sup>7</sup> In the course of this medicinal chemistry optimization, several structural requirements were revealed: the aliphatic side chain (red in Fig. 5) does not tolerate polar substituents, the  $\alpha,\beta$  double bond is crucial for good activity and has to be in *trans*-configuration, the C $\alpha$  stereocenter of the phenylalanine moiety (green in Fig. 5) must be *S*-configured and the alanine (purple in Fig. 5) requires an *N*-terminally attached methyl group. Furthermore, 3,5-bisfluorination of the phenyl moiety and introduction of pipecolate at the alanine (purple) for increased rigidity led to enhanced potency. The methyl group of the methylproline residue (blue) is also important for potency (Fig. 5). Substitutions at the phenylalanine benzene ring showed a very tight SAR. Fluorination in position 3 improved activity somewhat and 3,5-bisfluorination led to a strong improvement of MIC values against staphylococci, streptococci and enterococci. However, introduction of an additional fluorine substituent in position 4 (yielding 3,4,5-fluorination) was detrimental.<sup>7</sup> This is in accordance with the spatial limitations of the narrow binding groove occupied by the benzene ring where 4-fluorination possibly clashes sterically. 3,5-Bisfluorination on the other hand is well accommodated by a polar environment of aspartic acid and threonine side chains within the ClpP binding pocket.<sup>53</sup> The poly-unsaturated aliphatic side chain of ADEP1 was susceptible to temperature and light exposure. Removal of the triene functionality led to increased chemical stability while length and hydrophobicity of the alkyl side chain are important for potency. A heptenoyl moiety proved to be ideal in length for activity against staphylococci.<sup>7</sup> Applying these optimizations led to the synthesis of ADEP4, an improved congener with antibacterial *in vitro* and *in vivo* activity superior to natural product ADEP1, and in the range of antibiotics currently in clinical use.<sup>6,7</sup>

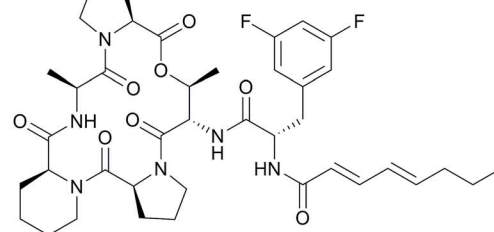


Fig. 5 Natural product ADEP1 and synthetic derivatives. Important structural elements of ADEP1 are colour coded. Red: aliphatic side chain; green: phenylalanine linker (bisfluorinated for increased potency in the synthetic congeners); blue: methylproline; purple: *N*-methylalanine (modified to a pipecolate moiety for increased potency in ADEP4).



**4.1.2 ADEP4 *N*-acylphenylalanine moiety.** To dissect the relevance of ADEP sub-structures, several fragments were synthesized. Interestingly, the *N*-acylphenylalanine portion by itself is necessary and sufficient for *in vitro* activity even though it is not very potent.<sup>115</sup> Enzymatic assays showed cooperativity similar to full-size ADEP congeners suggesting a similar binding mechanism. The peptidolactone macrocycle adds to potency but is inactive on its own. Thus, the acylphenylalanine part poses the minimal structural requirement for the ADEP effect.<sup>115</sup> Compounds including parts of the macrocyclic core show increased apparent binding constants compared to the mere *N*-acylphenylalanine moiety.<sup>115</sup> By providing additional contacts to the hydrophobic pocket the macrocycle improves affinity to achieve higher potency.

**4.1.3 B315.** Rigidifying the *N*-methylalanine region of the macrocycle by incorporating pipelicolic acid enhanced potency significantly, as exemplified by the ADEP4 congener (Fig. 5). The search for more rigid compounds becomes self-evident when taking into account that, in principle, a reduced entropic cost of the binding event leads to increased potency. Analogues of ADEP4 with further modifications of the pipelolate moiety were also synthesized.<sup>8</sup> The 4-methylpipelolate congener B315, for instance, showed potent *in vitro* activity against VRE and MRSA.<sup>8</sup> Additional modifications in this position led to 4-isopropylpipelolate (derivative not shown) and the serine residue within the macrocycle was exchanged with *allo*-threonine.<sup>9</sup> In general, rigidifying the peptidolactone backbone in these positions improved antibacterial activity and allowed for stronger ClpP activation with the exception of modifications that challenged the ClpP binding pocket sterically (4-isopropylpipelolate). Interestingly, introduction of a methylpipelolate showed slightly decreased activity against *S. pneumoniae* and *E. faecalis* compared to pipelolate (compound **1c** compared to **1b** in ref. 9), but, in combination with the *allo*-threonine, a synergistic effect was reported (compound **1g** compared to **1f** in ref. 9).<sup>9</sup> Within the context of congener series compared directly to each other, exchange of the serine residue with *allo*-threonine and 4-methylation of the pipelolate moiety proved to be the macrocycle rigidifications most beneficial for MIC values against staphylococci, streptococci and enterococci as well as for ClpP activation.<sup>9</sup> The resulting ADEP B315 (compound **1g** in ref. 9) was later tested *in vivo* and proved effective in mice infected with methicillin-susceptible as well as methicillin-resistant *S. aureus* with desmethyl-ADEP4 and vancomycin as benchmarks.<sup>116</sup> These findings confirm that rigidification as a pharmacological principle can indeed be applied to the ADEP peptidolactone macrocycle for improved ClpP binding. However, it is noteworthy, that Carney *et al.*, who had presented ADEP B315 as the ADEP derivative with strongest *in vitro* activity by then, had not compared it side-by-side to the ADEP4 congener.<sup>9</sup> A more recent study including ADEP4 (compound **7** in ref. 10) and ADEP B315 (compound **8** in ref. 10) shows ADEP4 to be superior in activity against a MRSA strain and inferior against a VRE strain.<sup>10</sup> A B315 congener including the activity-relevant methyl-proline (compound **22** in ref. 10) was also part of this study and did not add to the *in vitro* activity of ADEP B315.

**4.1.4 Compound 26.** In an attempt to optimize the ADEP structure for activity against Gram-negative bacteria, compound **26** was synthesized, which includes the *allo*-threonine, the methyl-proline, the pipelicolic acid modification, and an octanoyl aliphatic side chain containing a diene functionality also present in the natural product factor D.<sup>10</sup> This diene functionality improved stability compared to the natural product triene of factor A at ambient conditions. The increase in length to eight carbons with respect to ADEP4 raises the question whether the spatial limitations for the aliphatic side chain might be related to firmicutes. Compound **26** achieved increased activity compared to ADEP4 against chloramphenicol-resistant *Neisseria gonorrhoeae* and activity against an *E. coli* mutant with a compromised outer membrane but not the wild type.

## 4.2 ADEP – biological activity

Synthetic ADEP congeners, including ADEP4, B315 and compound **26** (Fig. 4) have MIC values in the low nanomolar range against a broad panel of Gram-positive pathogens.<sup>6,9,10</sup> ADEP4 cured mice with lethal systemic *S. aureus* infections where ADEP1 failed due to limited antibacterial activity, poor chemical stability and high metabolic clearance.<sup>6,7</sup> ADEP4 also outmatched marketed linezolid in murine lethal systemic infections caused by *S. aureus*, *S. pneumoniae* or *E. faecalis* and B315 was more effective than vancomycin in reducing the bacterial load of *S. aureus* in livers and kidneys of mice.<sup>6,116</sup> Furthermore, ADEP4 showed exceptional activity against persister cells of *S. aureus*. In side-by-side experiments with stationary cells, where ciprofloxacin, linezolid, rifampicin and vancomycin were literally inactive, ADEP4 reduced the number of colony forming units of *S. aureus* by 4 log units.<sup>11</sup> When ADEP4 was combined with either ciprofloxacin, or linezolid, or rifampicin, bacteria were eradicated to the level of detection.<sup>11</sup> A combination treatment of ADEP4 and rifampicin also eradicated *S. aureus* from a biofilm that had developed during a deep-seated thigh infection in neutropenic mice.<sup>11</sup> ADEP was also effective in killing a persisting *Enterococcus faecium* strain isolated from a neutropenic patient.<sup>117</sup> ADEP4 at 0.2  $\mu\text{M}$  eradicated this clinical isolate even in a preformed biofilm, whereas vancomycin and daptomycin failed at 256 and 50  $\mu\text{g ml}^{-1}$ , respectively.<sup>117</sup> The antibacterial potency of ADEPs proves the potential of ClpP's hydrophobic pocket as a druggable target site, where bactericidal and anti-persister activity can be achieved covering a broad spectrum of bacteria. ClpP mutations, which were observed in firmicutes during ADEP treatment under moderate growth conditions *in vitro*, should play less of a role under the stressed conditions of the infection process, where ClpP is essential for virulence and fitness.<sup>6,24,25,115</sup> Nonetheless, combination therapy is probably the therapeutic application strategy for ADEP, also considering the observed synergy against persisters.

Specificity of ADEPs for procaryotes is high and eukaryotic cells are not affected up to the micromolar concentration range.<sup>6,118</sup> Recently, a first organ histology study was published.<sup>116</sup> Histological analyses of liver and kidney sections from healthy mice treated with 50  $\text{mg kg}^{-1}$  B315 did not indicate any



tissue toxicity, whereas vancomycin, which had been run in parallel, showed pronounced kidney toxicity as obvious from vacuolization of kidney cells and protein accumulation. Despite these promising preliminary studies on *in vivo* efficacy, the current leads require further improvement, *e.g.* with regard to solubility (for intravenous application), metabolism, and chemical stability. When considering combination therapy, pharmacokinetic and pharmacodynamics parameters of the partners must also be compatible and drug–drug interaction must be avoided. Efforts concerning pharmacological optimization are underway.

### 4.3 Interaction of ADEP with the hydrophobic pocket of ClpP

The ADEP binding pocket ranges over two neighboring ClpP subunits. In accordance with the minimal structural requirement for ADEP to take effect, the aliphatic side chain and the benzene ring of the phenylalanine are buried deeply within the hydrophobic pocket of ClpP (Fig. 6b). The relevance of this part of the molecule is represented by the number of its hydrophobic interactions (Fig. 6a).<sup>53</sup> As each ADEP molecule establishes direct contacts with two neighboring ClpP subunits within the same ring, the stabilizing effects within the heptameric ring are obvious.<sup>53,90</sup> When studying the surface model of *B. subtilis* ClpP with bound ADEP1, the structural confinements of the hydrophobic side-chain in terms of length as well as sterical limitations for substituents at the benzene ring become apparent. Modelling of a superimposition of the *Helicobacter pylori* ClpX LGF-loop extracted from a *HpClpX* crystal structure with an ADEP structure from an ADEP-bound *E. coli* ClpP crystal, suggests that the ADEP phenyl moiety and aliphatic side chain mimic binding of the LGF motif (corresponding consensus sequence in *E. coli*: IGF).<sup>70,119</sup> Both the *N*-acylphenylalanine moiety of ADEP1 and the LGF motif overlap closely (Fig. 7c). The LGF leucine side chain extends into the channel that is otherwise occupied by the ADEP aliphatic side chain. The phenylalanine moiety of ADEP1 closely overlaps with the LGF phenylalanine. This is especially remarkable considering that the *N*-acylphenylalanine moiety, which closely resembles the (L/I)-GF-motif of ClpX, is also the minimal structural requirement for ADEP activity (see Section 4.1). Modifications in solvent-exposed regions of the macrocycle are promising for further compound optimization in terms of physiochemistry and ADME, whereas the potential for improvement of the *N*-acylphenylalanine part of ADEP seems limited due to the strict SAR and space limitations of the binding pocket. The ADEP binding pocket presents a hot spot for ClpP modulation and serves as a model target for protein–protein-interaction modulators. Efforts to screen for potential alternative ClpP binders have been undertaken with first positive results.<sup>120</sup>

Recently, discovery of a gain-of-function ClpP mutant of *S. aureus* provided new insight into the architectural properties of the ADEP binding site.<sup>121</sup> The Tyr62 residue of *B. subtilis* ClpP had already been shown to form two hydrogen bonds and also hydrophobic interactions with ADEP1 (Fig. 6a).<sup>53</sup> The H-bonds are formed between the tyrosine residue and the macrocycle backbone as well as the proximal part of the aliphatic chain.



**Fig. 6** Interaction between ADEP1 and *B. subtilis* ClpP. (a) Structure of ADEP1 and ClpP amino acid residues involved in binding. Two neighbouring ClpP subunits contribute to ADEP binding with their respective amino acid residues highlighted in grey and blue. Residues coloured in grey belong to the white ClpP subunit in Fig. 3b, blue residues originate from the blue ClpP subunit in Fig. 3b. Hydrophobic interactions are denoted by brackets, hydrogen bonds by green dotted lines. (b) Surface fill model of the *B. subtilis* ClpP crystal structure complexed with ADEP1. Two adjacent ClpP monomers are depicted in white and blue, respectively. The *N*-acylphenylalanine moiety inserts deeply into the hydrophobic pocket and comprises the green (phenylalanine) and red (aliphatic side chain) functional groups. The macrocycle backbone is more solvent-exposed. It contains the *N*-methylalanine (purple) and the methylproline (blue) moieties beneficial for activity.

Hydrophobic interactions with the benzene ring of the ADEP phenylalanine residue further anchor the molecule. Upon closer look, Ni *et al.* found that said tyrosine residue was rotated by approximately 90° in the ADEP-bound structures of *BsClpP*, *EcClpP*, and *MtClpP1P2*/agonist when compared to the apo forms of the respective ClpPs.<sup>53,70,87,121</sup> They argue that the energy barrier for adopting this rotated conformation is probably too high in the apo form of ClpP. Mutating Tyr63 in *S. aureus*, the corresponding





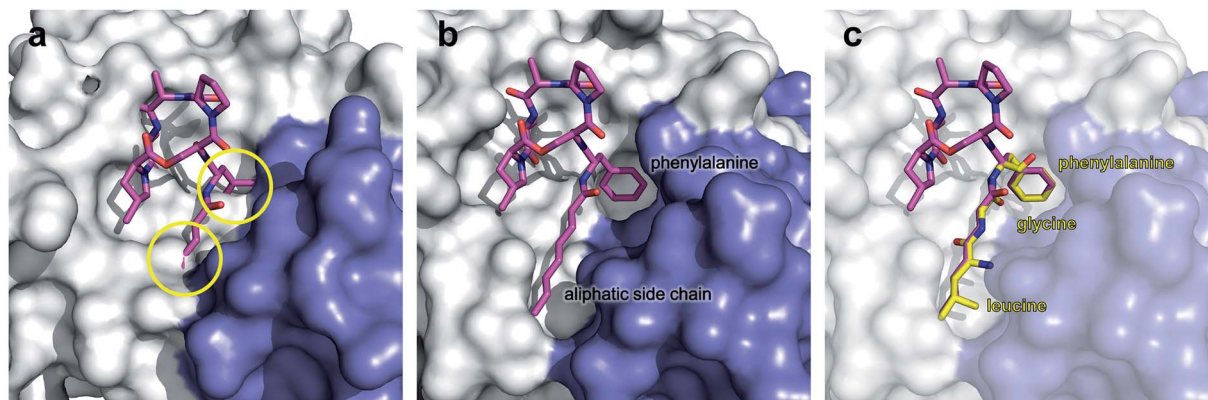


Fig. 7 Surface fill model of the *B. subtilis* ClpP crystal structure in complex with ADEP1. (a) Modelling of an ADEP1 molecule into the ADEP binding pocket of ClpP in the compressed conformation (PDB code: 3TT6) predicts sterical clashes (circles). This is also the case with other ADEP derivatives as well as different compressed ClpP structures. (b) Close-up view of an ADEP1 molecule in the hydrophobic pocket of ClpP in its extended state (PDB code: 3KTI). (c) Superimposition of the LGF motif from *Helicobacter pylori* ClpX (PDB code: 1UM8) with the *N*-acyl-phenylalanine moiety of ADEP1. The leucine and glycine residues overlap closely with the aliphatic side chain of ADEP1.

tyrosine residue according to *Sa*ClpP nomenclature, to an alanine, however, led to a rotated peptide backbone even in the absence of activator and bestowed  $\beta$ -casein and even FtsZ degradation capability onto ClpP alone. This marked an important step in the elucidation of the ADEP pocket organization and possibly revealed the key switch for turning on the protease.

#### 4.4 ADEP exerts conformational control over the entire ClpP barrel

ADEPs provide an elegant means for investigating the implications of “filling” the hydrophobic binding pocket of ClpP (Fig. 7). N-Terminal gate closure serves as a safeguard against uncontrolled digestion of proteins. A gated pore mechanism has long been presumed to be the critical factor in ClpP control. The available data however reveal a more global regulatory principle that includes additional safety measures.

Cumulative evidence indicates that the conformational control of ClpP by ADEP reaches beyond the N-terminal region lining the central entrance pore. Thermal shift assays revealed that ADEP binding increases the overall folding stability of the *S. aureus* ClpP complex.<sup>91</sup> In contrast to wild type ClpP from *S. aureus*, the catalytic site mutant D172N showed no residual peptidase activity in *in vitro* degradation assays but could be successfully activated by addition of either ADEPs or ClpX to degrade full-length protein and small peptides. Small angle X-ray scattering analysis showed a more compacted conformation for the D172N mutant with no difference in oligomeric state. ADEPs promote the extended conformation in this mutant that is otherwise only observed in a compacted conformation.<sup>91</sup> Hydrogen–deuterium exchange experiments using *E. coli* ClpP showed a remarkable increase in rigidity of the handle region after addition of ADEP.<sup>67</sup> The concept that “filling” the hydrophobic pocket stabilizes the handle in an extended conformation and the catalytic site in a competent conformation is in line with the crystallographic data.<sup>53,70</sup> This is remarkable insofar as the hydrophobic pocket is connected *via* intramolecular relays not just to the N-terminal region but also the more distant handle

region. Recent insights into the workings of *M. tuberculosis* ClpP are particularly interesting in this respect. *M. tuberculosis* encodes two ClpP paralogs on a single operon, namely *clpP1* and *clpP2*.<sup>122</sup> In the presence of an agonist peptide, ClpP1 and ClpP2 arrange into heterotetradecameric ClpP1P2 complexes *in vitro*, composed of two homoheptameric ClpP1 and ClpP2 rings, respectively.<sup>123,124</sup> This heterotetradecamer interacts asymmetrically with cognate Clp-ATPases ClpX and ClpC1 which bind only to ClpP2.<sup>125</sup> In accordance, X-ray crystallographic structural data of the ClpP1P2/ADEP complex show ADEP binding only at one ring, ClpP2.<sup>87</sup> Remarkably, pore opening was still triggered at the ClpP1 ring.<sup>87</sup> Thus, the conformation rearrangement that ADEP binding sets in motion must propagate from the hydrophobic pockets of ClpP2 *via* the ring–ring interface to the N-termini of ClpP1 over a distance of approximately 90 Å. This finding implies a long-distance relay within the complex that extends beyond single subunits.

To determine whether ADEP binding also effects the catalytic centers of ClpP, known inhibitors have been deployed in combination with ADEP treatment.  $\beta$ -Lactones are covalent inhibitors of the ClpP peptidase (suicide inhibitors).<sup>126,127</sup> Instead of a peptide bond, the active site serine attacks the carbonyl atom of the  $\beta$ -lactone ring. This event opens the ring to establish an acyl-ester linkage with the inhibitor which is much more stable than the acyl-ester intermediate in polypeptide degradation.<sup>127</sup> The following hydrolysis reaction regenerating the active site serine is substantially slowed (see catalysis mechanism of serine proteases in Fig. 1b). When ClpP was exposed to ADEP and  $\beta$ -lactone in combination, the catalytic efficiency of the first step, *i.e.*  $\beta$ -lactone binding, was two-fold accelerated for all  $\beta$ -lactone inhibitors employed despite varying side-chains.<sup>91</sup> Even more striking was the stimulating effect of ADEP on the  $\beta$ -lactone hydrolysis reaction. Hydrolysis rates of the bound inhibitors were stimulated from two-fold to approximately 20-fold depending on the  $\beta$ -lactone structure tested.<sup>91</sup> Notably, ADEPs affect the hydrolysis activity independently of the open state of the axial pores and stimulate catalysis as allosteric activators.



In conclusion, the hydrophobic pocket serves as a sort of “master switch” to turn the whole complex into an “on”-state. Turning the switch leads to the formation of an active extended conformation of ClpP, accelerated substrate turnover by the catalytic sites, widened axial pores, and an overall more stable and structurally less flexible machine. Taking a closer look at the geometry of the ADEP binding pocket provides a clue as to how ADEPs may achieve this transition. Modeling of ADEP1 (as well as ADEP derivatives) into the binding pocket of the inactive compressed ClpP structure from *B. subtilis* predicts a sterical clash of the aliphatic side chain (Fig. 7a). Thus, ADEPs can be regarded as sterical locks fixing ClpP in the active extended form and restricting transition to the inactive compressed form. This idea is further supported by the complete lack of compressed structures that have been co-crystallized with ADEP. It has been established that ClpP is a highly dynamic macromolecule.<sup>52</sup> We propose a model in which ClpP resides in an equilibrium between an active and inactive state and transiently adopts all of the above mentioned states. However, ADEP binding strongly shifts this equilibrium towards the active state *via* conformational control (Fig. 8). ClpP functions like a clockwork where each cogwheel is tightly interconnected. Mutation of a single amino acid residue can alter the structural organization of the whole macromolecule, for instance the active site mutation D172N, which results in a more compacted

structure.<sup>91</sup> Mutation of the Y63 to alanine enables an otherwise tightly controlled peptidase to degrade a folded protein substrate.<sup>121</sup> Therefore, structural shifts at one position are accompanied by a cascade of structural rearrangements that span the whole macromolecule. This structural interdependency is most vividly demonstrated by the observation that ADEP binding to the ClpP2 ring leads to pore opening in the opposing ClpP1 ring of the mycobacterial ClpP1P2 complex.<sup>87</sup> According to this model, ADEP binding is the equivalent to blocking one cogwheel with an iron rod and, as a consequence, bringing the whole clockwork to a halt.

#### 4.5 Comparison between ADEP-mediated and Clp-ATPase-mediated activation of ClpP

To this day, no co-crystallization of ClpP with any partner Clp-ATPase has been achieved. ADEPs have served as a tool to investigate the interaction between ClpP and its cognate unfoldases. Some of the findings gained by investigating the interaction between ADEP and ClpP have been transferred to Clp-ATPase/ClpP interaction. But, there are differences. Clp-ATPases actively unfold and thread the unfolded protein strand into the catalytic space of ClpP. In cryo-EM structures with Clp-ATPases, the axial gate of ClpP appeared smaller than in the “open-gate”-conformation of the ClpP/ADEP crystal structures.<sup>68,69</sup> The  $\alpha$ 5-helices of ClpP can adopt an unstructured



**Fig. 8** Current model of ClpP conformational control by ADEPs. ClpP resides in a natural equilibrium between the inactive compressed and the active extended states. None of these states are proteolytically competent because the digestion chamber is inaccessible for proteins. ADEP binding shifts this equilibrium towards the active extended state, opens the axial entry pores and, in addition, enhances catalytic efficiency.



conformation without destroying the oligomeric state and several studies suggest ClpP dynamics to be crucial in the interaction with Clp-ATPases.<sup>58</sup> While this motion of ClpP has been suggested to be part of a natural cycle required for catalysis and product release, dynamics of ADEP-mediated activity might be different.

In hydrogen exchange experiments, ADEP binding has been shown to induce a rigidification of the  $\alpha 5$ -helices in the equatorial plane.<sup>67</sup> As ADEPs binds to the hydrophobic pockets of ClpP with high affinity, it can be assumed that many, if not all, hydrophobic pockets are occupied by ADEP molecules at the same time. Clp-ATPase binding is comparatively weak and one Clp-ATPase hexamer can never fill more than six hydrophobic pockets at once. In accordance with the notion that “filling” the hydrophobic pocket enforces the active extended state, weak and partial binding by Clp-ATPases might have evolved to ensure ClpP dynamics important for natural functions. Here, we propose that the tight ADEP binding event shifts the dynamic equilibrium of ClpP more strongly towards the active extended conformation than binding of Clp-ATPases does. In that case, equatorial pore opening would occur to a smaller extent due to predominantly extended handles. The widened axial pore of the ClpP/ADEP complex then could not only allow for substrate entry but also, at least partially, accommodate product exit, thus altering the presumed operation mode of the structurally versatile ClpP.

## 5 Outlook

The bacterial Clp protease is a novel potential drug target that had not been included in the large antibacterial screening campaigns of pharma companies in the 1990s/2000s due to its inessentiality for growth of most pathogens under moderate conditions and due to the fact that mechanism-wise only inhibition but not activation and deregulation of a target were envisioned. It took the study of ADEP as a natural product to understand the elaborate mechanism by which a protease machine can be taken out of its natural context and misdirected to kill multi-resistant and persisting bacterial pathogens. Bacterial Clp protease activity can be deregulated in a multi-faceted way with two different major consequences. Abrogating the interaction or productive enzymatic cycle between the proteolytic core ClpP and its cognate Clp-ATPases prevents all natural functions of the protease in general and regulated proteolysis. This consequence is achieved by known modulators blocking either the hydrophobic pocket of ClpP (ADEP) or by binding to the N-terminus of the mycobacterial Clp-ATPase ClpC1 (lassomycin, ecumicin, and potentially cyclomarin A). In addition, extensive conformational control of ClpP by ADEP leads to unregulated proteolysis and the degradation of vital bacterial proteins. Notably, it is the latter aspect by which ClpP as a non-essential target in firmicutes leads to bactericidal activity. Since the first report of ClpP as the target of ADEP about ten years ago, four additional and structurally unrelated natural product classes (Fig. 4) have been discovered to act on the Clp protease by either binding to ClpP or the cognate Clp-ATPase

partner. It is likely that further natural product modulators of the Clp system remain to be found.

## 6 Acknowledgements

The research group of H. B.-O. acknowledges financial support of the German Research Foundation (SFB 766).

## 7 References

- 1 WHO, 2014, ISBN: 978 92 4 156474 8.
- 2 J. O'Neill, *AMR Review*, 2014, Antimicrobial Resistance: Tackling a Crisis for the Future Health and Wealth of Nations.
- 3 T. A. Wenciewicz, *Bioorg. Med. Chem.*, 2016, **24**, 6227–6252.
- 4 L. L. Silver, *Future Microbiol.*, 2015, **10**, 1711–1718.
- 5 K. H. Michel and R. E. Kastner, *US Pat.*, 4492650, 1985.
- 6 H. Brötz-Oesterhelt, D. Beyer, H.-P. Kroll, R. Endermann, C. Ladel, W. Schroeder, B. Hinzen, S. Raddatz, H. Paulsen, K. Henninger, J. E. Bandow, H.-G. Sahl and H. Labischinski, *Nat. Med.*, 2005, **11**, 1082–1087.
- 7 B. Hinzen, S. Raddatz, H. Paulsen, T. Lampe, A. Schumacher, D. Häbich, V. Hellwig, J. Benet-Buchholz, R. Endermann, H. Labischinski and H. Brötz-Oesterhelt, *ChemMedChem*, 2006, **1**, 689–693.
- 8 A. M. Socha, N. Y. Tan, K. L. Laplante and J. K. Sello, *Bioorg. Med. Chem.*, 2010, **18**, 7193–7202.
- 9 D. W. Carney, K. R. Schmitz, J. V. Truong, R. T. Sauer and J. K. Sello, *J. Am. Chem. Soc.*, 2014, **136**, 1922–1929.
- 10 J. D. Goodreid, J. Janetzko, J. P. Santa Maria, K. S. Wong, E. Leung, B. T. Eger, S. Bryson, E. F. Pai, S. D. Gray-Owen, S. Walker, W. A. Houry and R. A. Batey, *J. Med. Chem.*, 2016, **59**, 624–646.
- 11 B. P. Conlon, E. S. Nakayasu, L. E. Fleck, M. D. LaFleur, V. M. Isabella, K. Coleman, S. N. Leonard, R. D. Smith, J. N. Adkins and K. Lewis, *Nature*, 2013, **503**, 365–370.
- 12 D. Frees, U. Gerth and H. Ingmer, *Int. J. Med. Microbiol.*, 2014, **304**, 142–149.
- 13 J. Feng, S. Michalik, A. N. Varming, J. H. Andersen, D. Albrecht, L. Jelsbak, S. Krieger, K. Ohlsen, M. Hecker, U. Gerth, H. Ingmer and D. Frees, *J. Proteome Res.*, 2013, **12**, 547–558.
- 14 S. Runde, N. Molière, A. Heinz, E. Maisonneuve, A. Janczikowski, A. K. W. Elsholz, U. Gerth, M. Hecker and K. Turgay, *Mol. Microbiol.*, 2014, **91**, 1036–1052.
- 15 C. M. Sassetti, D. H. Boyd and E. J. Rubin, *Mol. Microbiol.*, 2003, **48**, 77–84.
- 16 W. F. Wu, Y. Zhou and S. Gottesman, *J. Bacteriol.*, 1999, **181**, 3681–3687.
- 17 C. K. Smith, T. A. Baker and R. T. Sauer, *Proc. Natl. Acad. Sci. U. S. A.*, 1999, **96**, 6678–6682.
- 18 T. Msadek, V. Dartois, F. Kunst, M. L. Herbaud, F. Denizot and G. Rapoport, *Mol. Microbiol.*, 1998, **27**, 899–914.
- 19 S. Nakano, G. Zheng, M. M. Nakano and P. Zuber, *J. Bacteriol.*, 2002, **184**, 3664–3670.
- 20 J. M. Flynn, S. B. Neher, Y. I. Kim, R. T. Sauer and T. A. Baker, *Mol. Cell*, 2003, **11**, 671–683.





- 21 P. Sass and H. Brötz-Oesterhelt, *Curr. Opin. Microbiol.*, 2013, **16**, 522–530.
- 22 H. Brötz-Oesterhelt and P. Sass, *Int. J. Med. Microbiol.*, 2014, **304**, 23–30.
- 23 E. Culp and G. D. Wright, *J. Antibiot.*, 2016, DOI: 10.1038/ja.2016.138.
- 24 D. Frees, K. Sørensen and H. Ingmer, *Infect. Immun.*, 2005, **73**, 8100–8108.
- 25 D. Frees, J. H. Andersen, L. Hemmingsen, K. Koskenniemi, K. T. Bæk, M. K. Muhammed, D. D. Gudeta, T. A. Nyman, A. Sukura, P. Varmanen and K. Savijoki, *J. Proteome Res.*, 2012, **11**, 95–108.
- 26 D. Frees, S. N. A. Qazi, P. J. Hill and H. Ingmer, *Mol. Microbiol.*, 2003, **48**, 1565–1578.
- 27 C. Wang, M. Li, D. Dong, J. Wang, J. Ren, M. Otto and Q. Gao, *Microbes Infect.*, 2007, **9**, 1376–1383.
- 28 F. Weinandy, K. Lorenz-Baath, V. S. Korotkov, T. Böttcher, S. Sethi, T. Chakraborty and S. A. Sieber, *ChemMedChem*, 2014, **9**, 710–713.
- 29 H. Y. Kwon, A. D. Ogunniyi, M. H. Choi, S. N. Pyo, D. K. Rhee and J. C. Paton, *Infect. Immun.*, 2004, **72**, 5646–5653.
- 30 O. Gaillot, E. Pellegrini, S. Bregenholt, S. Nair and P. Berche, *Mol. Microbiol.*, 2000, **35**, 1286–1294.
- 31 H. P. Feng and L. M. Gierasch, *Curr. Biol.*, 1998, **8**, R464–R467.
- 32 J. Porankiewicz, J. Wang and A. K. Clarke, *Mol. Microbiol.*, 1999, **32**, 449–458.
- 33 I. Levchenko, L. Luo and T. A. Baker, *Genes Dev.*, 1995, **9**, 2399–2408.
- 34 R. Krukltis, D. J. Welty and H. Nakai, *EMBO J.*, 1995, **9**, 935–944.
- 35 B. Felden, F. Vandenesch, P. Bouloc and P. Romby, *PLoS Pathog.*, 2011, **7**, e1002006.
- 36 R. Singh and P. Ray, *Future Microbiol.*, 2014, **9**, 669–681.
- 37 I. Chatterjee, P. Becker, M. Grundmeier, M. Bischoff, G. A. Somerville, G. Peters, B. Sinha, N. Harraghy, R. A. Proctor and M. Herrmann, *J. Bacteriol.*, 2005, **187**, 4488–4496.
- 38 I. Chatterjee, S. Schmitt, C. F. Batzilla, S. Engelmann, A. Keller, M. W. Ring, R. Kautenburger, W. Ziebuhr, M. Hecker, K. T. Preissner, M. Bischoff, R. A. Proctor, H. P. Beck, H. P. Lenhof, G. A. Somerville and M. Herrmann, *Proteomics*, 2009, **9**, 1152–1176.
- 39 J. E. Griffin, J. D. Gawronski, M. A. DeJesus, T. R. Ioerger, B. J. Akerley and C. M. Sassetti, *PLoS Pathog.*, 2011, **7**, e1002251.
- 40 J. Ollinger, T. O'malley, E. A. Kesicki, J. Odingo and T. Parish, *J. Bacteriol.*, 2012, **194**, 663–668.
- 41 R. M. Raju, M. Unnikrishnan, D. H. F. Rubin, V. Krishnamoorthy, O. Kandror, T. N. Akopian, A. L. Goldberg and E. J. Rubin, *PLoS Pathog.*, 2012, **8**, e1002511.
- 42 D. M. Roberts, Y. Personne, J. Ollinger and T. Parish, *Future Microbiol.*, 2013, **8**, 621–631.
- 43 M. W. Jackson, E. Silva-Herzog and G. V. Plano, *Mol. Microbiol.*, 2004, **54**, 1364–1378.
- 44 C. Webb, M. Moreno, M. Wilmes-Riesenberg, R. Curtiss and J. W. Foster, *Mol. Microbiol.*, 1999, **34**, 112–123.
- 45 R. Hengge-Aronis, *Microbiol. Mol. Biol. Rev.*, 2002, **66**, 373–395.
- 46 S. A. Joshi, G. L. Hersch, T. A. Baker and R. T. Sauer, *Nat. Struct. Mol. Biol.*, 2004, **11**, 404–411.
- 47 Y. I. Kim, I. Levchenko, K. Fraczowska, R. V. Woodruff, R. T. Sauer and T. A. Baker, *Nat. Struct. Biol.*, 2001, **8**, 230–233.
- 48 F. Ye, J. Zhang, H. Liu, R. Hilgenfeld, R. Zhang, X. Kong, L. Li, J. Lu, X. Zhang, D. Li, H. Jiang, C. G. Yang and C. Luo, *J. Biol. Chem.*, 2013, **288**, 17643–17653.
- 49 S. R. Geiger, T. Böttcher, S. A. Sieber and P. Cramer, *Angew. Chem., Int. Ed.*, 2011, **50**, 5749–5752.
- 50 J. Wang, J. A. Hartling and J. M. Flanagan, *Cell*, 1997, **91**, 447–456.
- 51 M. Gersch, A. List, M. Groll and S. A. Sieber, *J. Biol. Chem.*, 2012, **287**, 9484–9494.
- 52 K. Liu, A. Ologbenla and W. A. Houry, *Crit. Rev. Biochem. Mol. Biol.*, 2014, **49**, 400–412.
- 53 B.-G. Lee, E. Y. Park, K.-E. Lee, H. Jeon, K. H. Sung, H. Paulsen, H. Rübsamen-Schaeff, H. Brötz-Oesterhelt and H. K. Song, *Nat. Struct. Mol. Biol.*, 2010, **17**, 471–478.
- 54 B.-G. Lee, M. K. Kim and H. K. Song, *Mol. Cells*, 2011, **32**, 589–595.
- 55 J. Zhang, F. Ye, L. Lan, H. Jiang, C. Luo and C. G. Yang, *J. Biol. Chem.*, 2011, **286**, 37590–37601.
- 56 A. Szyk and M. R. Maurizi, *J. Struct. Biol.*, 2006, **156**, 165–174.
- 57 M. R. Maurizi, S. K. Singh, M. W. Thompson, M. Kessel and A. Ginsburg, *Biochemistry*, 1998, **37**, 7778–7786.
- 58 A. Gribun, M. S. Kimber, R. Ching, R. Sprangers, K. M. Fiebig and W. A. Houry, *J. Biol. Chem.*, 2005, **280**, 16185–16196.
- 59 R. Sprangers, A. Gribun, P. M. Hwang, W. A. Houry and L. E. Kay, *Proc. Natl. Acad. Sci. U. S. A.*, 2005, **102**, 16678–16683.
- 60 Ž. Maglica, K. Kolygo and E. Weber-Ban, *Structure*, 2009, **17**, 508–516.
- 61 M. S. Kimber, A. Y. H. Yu, M. Borg, E. Leung, H. S. Chan and W. A. Houry, *Structure*, 2010, **18**, 798–808.
- 62 K. M. Woo, W. J. Chung, D. B. Ha, A. L. Goldberg and C. H. Chung, *J. Biol. Chem.*, 1989, **264**, 2088–2091.
- 63 M. W. Thompson, S. K. Singh and M. R. Maurizi, *J. Biol. Chem.*, 1994, **269**, 18209–18215.
- 64 J. Ortega, S. K. Singh, T. Ishikawa, M. R. Maurizi and A. C. Steven, *Mol. Cell*, 2000, **6**, 1515–1521.
- 65 T. Ishikawa, F. Beuron, M. Kessel, S. Wickner, M. R. Maurizi and A. C. Steven, *Proc. Natl. Acad. Sci. U. S. A.*, 2001, **98**, 4328–4333.
- 66 M. C. Bewley, V. Graziano, K. Griffin and J. M. Flanagan, *J. Struct. Biol.*, 2006, **153**, 113–128.
- 67 M. A. Sowole, J. A. Alexopoulos, Y. Q. Cheng, J. Ortega and L. Konermann, *J. Mol. Biol.*, 2013, **425**, 4508–4519.



- 68 G. Effantin, M. R. Maurizi and A. C. Steven, *J. Biol. Chem.*, 2010, **285**, 14834–14840.
- 69 J. A. Alexopoulos, A. Guarné and J. Ortega, *J. Struct. Biol.*, 2012, **179**, 202–210.
- 70 D. H. S. Li, Y. S. Chung, M. Gloyd, E. Joseph, R. Ghirlando, G. D. Wright, Y. Q. Cheng, M. R. Maurizi, A. Guarné and J. Ortega, *Chem. Biol.*, 2010, **17**, 959–969.
- 71 L. D. Jennings, J. Bohon, M. R. Chance and S. Licht, *Biochemistry*, 2008, **47**, 11031–11040.
- 72 K. C. Keiler, P. R. Waller and R. T. Sauer, *Science*, 1996, **271**, 990–993.
- 73 S. Gottesman, E. Roche, Y. Zhou and R. T. Sauer, *Genes Dev.*, 1998, **12**, 1338–1347.
- 74 A. Martin, T. A. Baker and R. T. Sauer, *Mol. Cell*, 2007, **27**, 41–52.
- 75 J. A. Kenniston, T. A. Baker, J. M. Fernandez and R. T. Sauer, *Cell*, 2003, **114**, 511–520.
- 76 B. M. Stinson, V. Baytshtok, K. R. Schmitz, T. A. Baker and R. T. Sauer, *Nat. Struct. Mol. Biol.*, 2015, **22**, 411–416.
- 77 A. Martin, T. A. Baker and R. T. Sauer, *Nat. Struct. Mol. Biol.*, 2008, **15**, 139–145.
- 78 A. Martin, T. A. Baker and R. T. Sauer, *Nature*, 2005, **437**, 1115–1120.
- 79 K. H. Choi and S. Licht, *Biochemistry*, 2005, **44**, 13921–13931.
- 80 L. D. Jennings, D. S. Lun, M. Médard and S. Licht, *Biochemistry*, 2008, **47**, 11536–11546.
- 81 I. Levchenko, M. Seidel, R. T. Sauer and T. A. Baker, *Science*, 2000, **289**, 2354–2356.
- 82 J. M. Flynn, I. Levchenko, M. Seidel, S. H. Wickner, R. T. Sauer and T. A. Baker, *Proc. Natl. Acad. Sci. U. S. A.*, 2001, **98**, 10584–10589.
- 83 J. Kirstein, N. Molière, D. A. Dougan and K. Turgay, *Nat. Rev. Microbiol.*, 2009, **7**, 589–599.
- 84 M. W. Thompson and M. R. Maurizi, *J. Biol. Chem.*, 1994, **269**, 18201–18208.
- 85 T. A. Baker and R. T. Sauer, *Biochim. Biophys. Acta, Mol. Cell Res.*, 2012, **1823**, 15–28.
- 86 S. G. Kang, M. N. Dimitrova, J. Ortega, A. Ginsburg and M. R. Maurizi, *J. Biol. Chem.*, 2005, **280**, 35424–35432.
- 87 K. R. Schmitz, D. W. Carney, J. K. Sello and R. T. Sauer, *Proc. Natl. Acad. Sci. U. S. A.*, 2014, **111**, E4587–E4595.
- 88 J. Kirstein, T. Schlothauer, D. A. Dougan, H. Lilie, G. Tischendorf, A. Mogk, B. Bukau and K. Turgay, *EMBO J.*, 2006, **25**, 1481–1491.
- 89 T. A. Baker and R. T. Sauer, *Trends Biochem. Sci.*, 2006, **31**, 647–653.
- 90 J. Kirstein, A. Hoffmann, H. Lilie, R. Schmidt, H. Rübsamen-Waigmann, H. Brötz-Oesterhelt, A. Mogk and K. Turgay, *EMBO Mol. Med.*, 2009, **1**, 37–49.
- 91 M. Gersch, K. Famulla, M. Dahmen, C. Göbl, I. Malik, K. Richter, V. S. Korotkov, P. Sass, H. Rübsamen-Schaeff, T. Madl, H. Brötz-Oesterhelt and S. A. Sieber, *Nat. Commun.*, 2015, **6**, 6320.
- 92 T. Böttcher and S. A. Sieber, *ChemBioChem*, 2009, **10**, 663–666.
- 93 P. Sass, M. Josten, K. Famulla, G. Schiffer, H.-G. Sahl, L. Hamoen and H. Brötz-Oesterhelt, *Proc. Natl. Acad. Sci. U. S. A.*, 2011, **108**, 17474–17479.
- 94 A. Schiefer, J. Vollmer, C. Lämmer, S. Specht, C. Lentz, H. Ruebsamen-Schaeff, H. Brötz-Oesterhelt, A. Hoerauf and K. Pfarr, *J. Antimicrob. Chemother.*, 2013, **68**, 1790–1800.
- 95 N. P. Lavey, J. A. Coker, E. A. Ruben and A. S. Duerfeldt, *J. Nat. Prod.*, 2016, **79**, 1193–1197.
- 96 J. Alexopoulos, B. Ahsan, L. Homchaudhuri, N. Husain, Y. Q. Cheng and J. Ortega, *Mol. Microbiol.*, 2013, **90**, 167–180.
- 97 M. K. Renner, Y. C. Shen, X. C. Cheng, P. R. Jensen, W. Frankmoelle, C. A. Kauffman, W. Fenical, E. Lobkovsky and J. Clardy, *J. Am. Chem. Soc.*, 1999, **121**, 11273–11276.
- 98 E. K. Schmitt, M. Riwanto, V. Sambandamurthy, S. Roggo, C. Miault, C. Zwingelstein, P. Krastel, C. Noble, D. Beer, S. P. S. Rao, M. Au, P. Niyomrattanakit, V. Lim, J. Zheng, D. Jeffery, K. Pethe and L. R. Camacho, *Angew. Chem., Int. Ed.*, 2011, **50**, 5889–5891.
- 99 D. Vasudevan, S. P. S. Rao and C. G. Noble, *J. Biol. Chem.*, 2013, **288**, 30883–30891.
- 100 K. Turgay, L. W. Hamoen, G. Venema and D. Dubnau, *Genes Dev.*, 1997, **11**, 119–128.
- 101 T. Schlothauer, A. Mogk, D. A. Dougan, B. Bukau and K. Turgay, *Proc. Natl. Acad. Sci. U. S. A.*, 2003, **100**, 2306–2311.
- 102 D. B. Trentini, M. J. Suskiewicz, A. Heuck, R. Kurzbauer, L. Deszcz, K. Mechtler and T. Clausen, *Nature*, 2016, **539**, 48–53.
- 103 S. Barik, K. Sureka, P. Mukherjee, J. Basu and M. Kundu, *Mol. Microbiol.*, 2010, **75**, 592–606.
- 104 F. Wang, Z. Mei, Y. Qi, C. Yan, Q. Hu, J. Wang and Y. Shi, *Nature*, 2011, **471**, 331–335.
- 105 E. U. Weber-Ban, B. G. Reid, A. D. Miranker and A. L. Horwich, *Nature*, 1999, **401**, 90–93.
- 106 E. Gavriš, C. S. Sit, S. Cao, O. Kandror, A. Spoering, A. Peoples, L. Ling, A. Fetterman, D. Hughes, A. Bissell, H. Torrey, T. Akopian, A. Mueller, S. Epstein, A. Goldberg, J. Clardy and K. Lewis, *Chem. Biol.*, 2014, **21**, 509–518.
- 107 W. Gao, J. Y. Kim, S. N. Chen, S. H. Cho, J. Choi, B. U. Jaki, Y. Y. Jin, D. C. Lankin, J. E. Lee, S. Y. Lee, J. B. McAlpine, J. G. Napolitano, S. G. Franzblau, J.-W. Suh and G. F. Pauli, *Org. Lett.*, 2014, **16**, 6044–6047.
- 108 M. Choules, Y. Yu, S. H. Cho, J. Anderson, W. Gao, L. Klein, D. C. Lankin, J. Y. Kim, J. Cheng, S. H. Yang, H. Lee, J.-W. Suh, S. G. Franzblau and G. F. Pauli, *Planta Med.*, 2015, **81**, CL2.
- 109 W. Gao, J. G. Napolitano, J. Y. Kim, I.-A. Lee, J. E. Lee, J. Choi, M. F. Rodríguez-Brasco, B. U. Jaki, S. Cho, J. B. McAlpine, G. F. Pauli, J. Kim, J.-W. Suh and S. G. Franzblau, *Planta Med.*, 2012, **78**, PJ134.
- 110 W. Gao, J. Y. Kim, J. R. Anderson, T. Akopian, S. Hong, Y. Y. Jin, O. Kandror, J. W. Kim, I.-A. Lee, S. Y. Lee, J. B. McAlpine, S. Mulugeta, S. Sunoqrot, Y. Wang, S. H. Yang, T.-M. Yoon, A. L. Goldberg, G. F. Pauli,



- J.-W. Suh, S. G. Franzblau and S. Cho, *Antimicrob. Agents Chemother.*, 2015, **59**, 880–889.
- 111 K. Famulla, P. Sass, I. Malik, T. Akopian, O. Kandror, M. Alber, B. Hinzen, H. Ruebsamen-Schaeff, R. Kalscheuer, A. L. Goldberg and H. Brötz-Oesterhelt, *Mol. Microbiol.*, 2016, **101**, 194–209.
- 112 T. Akopian, O. Kandror, R. M. Raju, M. Unnikrishnan, E. J. Rubin and A. L. Goldberg, *EMBO J.*, 2012, **31**, 1529–1541.
- 113 K. R. Schmitz and R. T. Sauer, *Mol. Microbiol.*, 2014, **93**, 617–628.
- 114 R. M. Raju, M. P. Jedrychowski, J.-R. Wei, J. T. Pinkham, A. S. Park, K. O'Brien, G. Rehren, D. Schnappinger, S. P. Gygi and E. J. Rubin, *PLoS Pathog.*, 2014, **10**, e1003994.
- 115 D. W. Carney, C. L. Compton, K. R. Schmitz, J. P. Stevens, R. T. Sauer and J. K. Sello, *ChemBioChem*, 2014, **15**, 2216–2220.
- 116 M. Arvanitis, G. Li, D. D. Li, D. Cotnoir, L. Ganley-Leal, D. W. Carney, J. K. Sello and E. Mylonakis, *PLoS One*, 2016, **11**, e0153912.
- 117 E. S. Honsa, V. S. Cooper, M. N. Mhaissen, M. Frank, J. Shaker, A. Iverson, J. Rubnitz, R. T. Hayden, R. E. Lee, C. O. Rock, E. I. Tuomanen, J. Wolf and J. W. Rosch, *mBio*, 2017, **8**, e02124-16.
- 118 S. Xu, P. Guo, Y. Gao, Q. Shi, D. He, Y. Gao and H. Zhang, *Biochem. Biophys. Res. Commun.*, 2013, **438**, 468–472.
- 119 D. Y. Kim and K. K. Kim, *J. Biol. Chem.*, 2003, **278**, 50664–50670.
- 120 E. Leung, A. Datti, M. Cossette, J. Goodreid, S. E. McCaw, M. Mah, A. Nakhamchik, K. Ogata, M. El Bakkouri, Y. Q. Cheng, S. J. Wodak, B. T. Eger, E. F. Pai, J. Liu, S. Gray-Owen, R. A. Batey and W. A. Houry, *Chem. Biol.*, 2011, **18**, 1167–1178.
- 121 T. Ni, F. Ye, X. Liu, J. Zhang, H. Liu, J. Li, Y. Zhang, Y. Sun, M. Wang, C. Luo, H. Jiang, L. Lan, J. Gan, A. Zhang, H. Zhou and C. G. Yang, *ACS Chem. Biol.*, 2016, **11**, 1964–1972.
- 122 S. T. Cole, R. Brosch, J. Parkhill, T. Garnier, C. Churcher, D. Harris, S. V. Gordon, K. Eiglmeier, S. Gas, C. E. Barry, F. Tekaiia, K. Badcock, D. Basham, D. Brown, T. Chillingworth, R. Connor, R. Davies, K. Devlin, T. Feltwell, S. Gentles, N. Hamlin, S. Holroyd, T. Hornsby, K. Jagels, A. Krogh, J. McLean, S. Moule, L. Murphy, K. Oliver, J. Osborne, M. A. Quail, M.-A. Rajandream, J. Rogers, S. Rutter, K. Seeger, J. Skelton, R. Squares, S. Squares, J. E. Sulston, K. Taylor, S. Whitehead and B. G. Barrell, *Nature*, 1998, **393**, 537–544.
- 123 H. Ingvarsson, M. J. Maté, M. Högbom, D. Portnoï, N. Benaroudj, P. M. Alzari, M. Ortiz-Lombardía and T. Unge, *Acta Crystallogr., Sect. D: Biol. Crystallogr.*, 2007, **63**, 249–259.
- 124 N. Benaroudj, B. Raynal, M. Miot and M. Ortiz-Lombardia, *BMC Biochem.*, 2011, **12**, 61.
- 125 J. Leodolter, J. Warweg and E. Weber-Ban, *PLoS One*, 2015, **10**, e0125345.
- 126 T. Böttcher and S. A. Sieber, *Angew. Chem., Int. Ed.*, 2008, **47**, 4600–4603.
- 127 M. Gersch, F. Gut, V. S. Korotkov, J. Lehmann, T. Böttcher, M. Rusch, C. Hedberg, H. Waldmann, G. Klebe and S. A. Sieber, *Angew. Chem., Int. Ed.*, 2013, **52**, 3009–3014.

