



Cite this: *Environ. Sci.: Water Res. Technol.*, 2018, 4, 206

## Application of cell-based bioassays to evaluate treatment efficacy of conventional and intensified treatment wetlands†

Jaime Nivala,<sup>‡a</sup> Peta A. Neale,<sup>‡b</sup> Tobias Haasis,<sup>c</sup> Stefanie Kahl,<sup>‡d</sup> Maria König,<sup>e</sup> Roland A. Müller,<sup>a</sup> Thorsten Reemtsma,<sup>‡d</sup> Rita Schlichting<sup>e</sup> and Beate I. Escher<sup>‡\*ce</sup>

Constructed wetlands are commonly used for wastewater treatment when centralized sewage treatment is not feasible. Many studies have focused on the removal of micropollutants by treatment wetlands, but little is known about how well they can remove biological activity. Here we studied the removal efficacy of conventional and intensified treatment wetland designs using both chemical analysis of conventional wastewater parameters and treatment indicator chemicals (caffeine, ibuprofen, naproxen, benzotriazole, diclofenac, acesulfame, carbamazepine) as well as a panel of *in vitro* bioassays indicative of different stages of cellular toxicity pathways, such as xenobiotic metabolism, receptor-mediated effect and adaptive stress responses. Water samples collected before and after seven treatment wetlands were compared against the adjacent municipal wastewater treatment plant. The intensified treatment wetlands generally removed micropollutants and biological activity to a greater extent than the conventional wastewater treatment plant, whereas the conventional horizontal subsurface flow wetland showed poor removal of all indicators. Carbamazepine was not well removed by any of the studied systems as expected from reported recalcitrance in aerobic environments. Estrogenic activity, which is a commonly used biological endpoint indicator for wastewater treatment, was removed very well by the intensified wetlands (97 to 99.5%) with similar or slightly lower removal efficacy for all other biological endpoints. The results highlight the importance of applying indicator bioassays complementary to indicator chemical analysis for monitoring treatment efficacy. The high removal efficacy of biological effects as a measure of total effect-scaled concentrations of chemicals provides further support to the use of intensified wetlands for wastewater treatment.

Received 29th August 2017,  
Accepted 13th November 2017

DOI: 10.1039/c7ew00341b

rs.li/es-water

### Water impact

Constructed wetlands offer an alternative to conventional wastewater treatment, though few studies have assessed how well these systems remove biological activity. The current study found that intensified treatment wetlands were able to remove between 74–100% of biological activity, with 97–99.5% of estrogenicity removed. This study provides further evidence that treatment wetlands can contribute to the protection of local water cycles.

<sup>a</sup> UFZ – Helmholtz Centre for Environmental Research, Centre for Environmental Biotechnology, 04318 Leipzig, Germany

<sup>b</sup> Australian Rivers Institute, Griffith School of Environment, Griffith University, Southport QLD 4222, Australia

<sup>c</sup> Eberhard Karls University Tübingen, Environmental Toxicology, Center for Applied Geosciences, 72074 Tübingen, Germany

<sup>d</sup> UFZ – Helmholtz Centre for Environmental Research, Department of Analytical Chemistry, 04318 Leipzig, Germany

<sup>e</sup> UFZ – Helmholtz Centre for Environmental Research, Department Cell Toxicology, 04318 Leipzig, Germany. E-mail: beate.escher@ufz.de; Tel: +49 341 235 1244

† Electronic supplementary information (ESI) available. See DOI: 10.1039/c7ew00341b

‡ Both authors contributed equally to this MS.

## 1. Introduction

Treatment wetlands are one of many decentralized wastewater treatment technologies that can be used for water quality improvement in areas for which centralized sewage treatment is not an option. Further, treatment wetlands can also be applied as a polishing step after conventional wastewater treatment.<sup>1</sup> Treatment wetlands are based on ecological and natural principles and offer many advantages over other decentralized wastewater treatment technologies. Classic designs are simple to operate, low-cost, and can be constructed out of local materials,<sup>2</sup> leading to the widespread use of wetlands for water quality improvement around the world.

Across the treatment wetland technology gradient from passive to intensified systems, there are trade-offs between

system footprint and energy requirements. A decrease in footprint typically comes at a cost of increased electricity consumption and more complex design and operational requirements.<sup>3</sup> However, intensified treatment wetlands are able to degrade pollutants present in wastewater 10- to 1000-fold faster than completely passive wetland designs.<sup>4</sup>

The first research on micropollutant removal by treatment wetlands started ten years ago in Europe<sup>5-7</sup> and has gained a lot of momentum in recent years. Most studies on micropollutant removal in treatment wetlands focus on free water surface (FWS) and horizontal subsurface flow (HSSF) treatment wetland designs. A review by Verlicchi and Zambello<sup>8</sup> reported variable treatment efficacy for wetlands used for primary, secondary, and tertiary treatment, but identified many individual micropollutants that are well-removed (>75%) in FWS and HSSF wetlands for secondary treatment of domestic wastewater. Many current studies are conducted on laboratory-scale systems under controlled conditions,<sup>9-12</sup> sometimes using synthetic wastewater that does not contain the contaminants of concern at realistic concentrations.<sup>13</sup> Recent studies investigating removal of micropollutants in full-scale treatment systems do exist, but reported only the performance of HSSF<sup>14,15</sup> and FWS<sup>16-18</sup> designs.

While most studies on wetland treatment focus on individual chemicals, wastewater contains a complex mixture of micropollutants, including pharmaceutical and personal care products (PPCP), food additives and industrial chemicals, as well as their transformation products.<sup>19</sup> In a previous study on six treatment wetland on the same site, seven micropollutants were determined over a whole-year period as treatment indicators.<sup>20</sup> These indicators were chosen to reflect the removal of micropollutants of different biodegradability, from easily degradable (caffeine) to persistent under oxic conditions (carbamazepine).<sup>20,21</sup> The same set of indicators was also used in this study to monitor the performance of the treatment wetlands in removing micropollutants.

Chemical analysis alone does not provide any information about the potency of the mixture of detected chemicals and the (waste-) water itself. *In vitro* bioassays can be applied complementary to chemical analysis as they provide information about the effect of all active compounds in a sample. While bioassays have been applied widely to drinking water, surface water and wastewater<sup>22-24</sup> and to assess the treatment efficacy of conventional wastewater treatment plants (WWTP) and advanced water treatment plants,<sup>25-27</sup> there has been limited application to assess the treatment efficacy of constructed wetlands. Most of these studies only focussed on estrogenicity.<sup>28,29</sup> In the most comprehensive study to date, Ávila *et al.*<sup>30</sup> applied bioassays indicative of dioxin-like activity, estrogenicity and apical effects in whole organisms to evaluate the removal of spiked micropollutants in a hybrid constructed wetland, with approximately 70–100% removal of biological activity observed.

To ensure that most biological effects elicited by typical wastewater contaminants are detected during monitoring, it is important to assemble a bioanalytical test battery that

covers different stages of cellular toxicity pathways, including xenobiotic metabolism, receptor-mediated effects, adaptive stress responses and cytotoxicity.<sup>31</sup> Cellular toxicity pathways are an important stage in adverse outcome pathways, though an effect at the cellular level may not necessarily lead to higher order effects.<sup>32</sup> Test batteries indicative of different stages of cellular toxicity pathways have been successfully applied to drinking water, surface water and wastewater.<sup>22,33,34</sup>

In the current study a bioanalytical test battery was applied to assess the ability of seven pilot-scale conventional and intensified wetland systems to remove biological activity. This was complemented with chemical analysis of seven indicator micropollutants, which are representative for a larger number of compounds and from high to low biodegradability,<sup>21</sup> and conventional wastewater parameters. The treatment efficacy of the constructed wetlands was also compared to a conventional WWTP located adjacent to the wetlands that drew from the same raw municipal wastewater. Previous studies showed variable removal of micropollutants over different seasons,<sup>35,36</sup> and in the precedent study on the same wetlands,<sup>20</sup> the removal of nutrients, bulk organic matter and micropollutants also showed seasonal variability. Therefore, the bioanalytical assessment in the present study was conducted in summer (July) and autumn (November) to explore seasonal differences, which could be due to differences in plant growth and microbial activity.

The applied test battery included assays indicative of xenobiotic metabolism, receptor-mediated effects and adaptive stress responses. Two assays indicative of xenobiotic metabolism were included in the test battery, the AhR CALUX for activation of the aryl hydrocarbon receptor (AhR) and the PPAR $\gamma$ -*bla* for binding to the peroxisome proliferator-activated receptor gamma (PPAR $\gamma$ ). A wide range of environmental chemicals and water samples has been shown to activate AhR and PPAR $\gamma$ .<sup>22,24,31,37</sup> To evaluate hormonal activity, a suite of bioassays indicative of activation of the estrogen receptor (ER), androgen receptor (AR), glucocorticoid receptor (GR) and progesterone receptor (PR) were also included. Receptor-mediated effects are indicative of specific modes of action and have been widely applied to evaluate wastewater and recycled water treatment efficacy.<sup>1,38</sup> As wastewater can contain a mixture of both hormone agonists and antagonists, inhibition of ER, AR, GR and PR were assessed in parallel. Finally, two assays indicative of adaptive stress responses were included, AREc32 for the oxidative stress response and NF- $\kappa$ B-*bla* for the NF- $\kappa$ B response. Adaptive stress response pathways help to re-establish homeostasis after damage to cells by stressors,<sup>39</sup> with previous studies showing a range of water types can activate the oxidative stress response and the NF- $\kappa$ B response.<sup>33,40</sup> Further, cell viability was assessed in parallel for all assays to ensure that cytotoxicity did not interfere with the observed effect. Through the use of the assembled test battery, the current study is the first to comprehensively evaluate the treatment efficacy of conventional and intensified wetlands based on biological activity.

## 2. Materials and methods

### 2.1. Sample collection

Water samples were collected from the wetland systems at the ecotechnology research facility at Langenreichenbach, located near Leipzig, Germany using a previously described sampling methodology based on grab sampling.<sup>20</sup> Kahl *et al.*<sup>20</sup> reported that grab sampling at this same research site with samples averaged over 12 samples taken at 2 h intervals showed negligible variation (4–9%) over one week in effluent concentrations from the H50p treatment system for selected micropollutants diclofenac, ibuprofen, and naproxen. Variations were higher within a day (up to 30%) or between consecutive days (up to 40%),<sup>20</sup> but for this study where we mainly evaluated the suitability of bioassays for monitoring treatment efficacy, a grab sample will still be representative of treatment efficacy.

Further information about the facility can be found in Nivala *et al.*<sup>41</sup> The constructed wetlands included conventional and intensified designs. The baseline technology is a conventional horizontal flow wetland with 50 cm saturated depth (H50p). The intensified wetland systems tested include a saturated vertical flow wetland with aeration (VAp), a saturated horizontal flow wetland with aeration (HAp), and a reciprocating system (R). One two-stage wetland system was tested, which consisted of the vertical flow aerated wetland followed by an unsaturated sand filter (VAp + VSp). The intensified systems HM and HMc are duplicate horizontal flow aerated wetlands, but in HM aeration was shut off between 40 and 70% of the fractional distance along the direction of flow. Within the HM system, internal water samples were also collected at the locations where aeration was shut off (HM40) and turned back on (HM70). Further information about the studied wetlands can be found in Table 1. With the exception of the reciprocating system, R, all wetlands were planted with common reed (*Phragmites australis*). At the time the study began, all of the systems had been running in steady state for a number of years (see Table 1). The two-stage system VAp + VSp was put into operation in 2016, but the individual systems had been in operation for years prior to the start of the current study. The input for all wetlands

was effluent from a septic tank, SEP (out), in which municipal wastewater received primary treatment. Samples were also collected from the influent and effluent of the adjacent municipal WWTP (16 000 population equivalent; anaerobic and aerobic activated sludge treatment with biological and chemical phosphorus precipitation). The WWTP samples were named WWTP (in), and WWTP (out). Two sampling campaigns were conducted in order to capture seasonal differences, with samples collected on the 26th July and 8th November 2016. Two times two-litre grab samples were collected from each system for bioanalysis. The samples were filtered with glass fibre filters prior to enrichment using Chromabond HR-X solid phase extraction (SPE) cartridges. After extraction, the cartridges were eluted with 10 mL methanol followed by 10 mL ethylacetate and blown down under a gentle nitrogen stream, with the duplicates combined to one extract with a final enrichment factor of 1000. Water samples for micropollutant analysis were collected in 50 mL or 100 mL amber glass bottles. The sample collection procedure for conventional wastewater parameters is described in detail elsewhere.<sup>41</sup>

### 2.2. Chemical analysis

Seven common municipal wastewater-based micropollutants, acesulfame, benzotriazole, caffeine, carbamazepine, diclofenac, ibuprofen and naproxen, were analysed using high performance liquid chromatography tandem mass spectrometry (HPLC-MS/MS) using the method described by Kahl *et al.*<sup>20</sup> Isotope-labelled internal standards of each analyte were used for quantification. In short, samples were directly injected, though only after dilution in the case of WWTP (in), SEP (out), H50p, after addition of the internal standards and filtration (syringe filters, regenerated cellulose membrane). The seven micropollutants served as indicator compounds, representing different degree of biodegradability under aerobic conditions. Further information on the compound choice and biodegradability can be found in Kahl *et al.*<sup>20</sup> A range of conventional wastewater parameters, including electrical conductivity, dissolved oxygen, carbonaceous biochemical oxygen demand (CBOD<sub>5</sub>), total organic

**Table 1** Description of design and system types of the studied treatment wetlands

Site ID	Design	System type	Design flow (L/d)	Area (m <sup>2</sup> )	Effective depth <sup>a</sup> (cm)	Operation start date
H50p	Conventional	Horizontal flow, planted	200	5.6	50	2010
VAp	Intensified	Vertical flow with aeration, planted	576	6.2	85	2010
VAp + VSp	Intensified, two-stage system	Vertical flow with aeration (saturated) followed by an unsaturated vertical flow, planted	576	6.2 (each cell)	85	2016 <sup>b</sup>
HAp	Intensified	Horizontal flow with aeration, planted	576	5.6	100	2010
R	Intensified	Reciprocating	1440	13.2	95	2011
HMc	Intensified	Horizontal flow with aeration, planted	576	5.6	90	2014
HM	Intensified	Horizontal flow with no aeration from 40–70% fractional distance, planted	576	5.6	100	2014

<sup>a</sup> Effective depth denotes depth of wetland system actively involved in treatment. <sup>b</sup> VSp operational since 2012, but only used in combination with VAp since 2016.

carbon (TOC), total nitrogen (TN), ammonium-nitrogen (NH<sub>4</sub>-N) and nitrate-nitrogen (NO<sub>3</sub>-N), were also analysed in the treatment wetland samples (ESI,† Table S1), with information about the analysis methods in Kahl *et al.*<sup>20</sup>

Micropollutant removal was quantified with eqn (1) using influent and effluent concentrations ( $C_{\text{influent}}$  and  $C_{\text{effluent}}$ , respectively). The influent to all treatment wetland systems was septic tank effluent, SEP (out). Removal was calculated using half of the analytical limit of detection (LOD) if  $C_{\text{effluent}}$  was below the LOD. The LODs were taken from Kahl *et al.*<sup>20</sup> and are listed also in the ESI,† Table S2.

$$\text{Removal (\%)} = \frac{C_{\text{influent}} - C_{\text{effluent}}}{C_{\text{influent}}} \times 100 \quad (1)$$

### 2.3. Bioanalysis

Eight *in vitro* bioassays covering 12 different endpoints were applied in the current study and are summarised in Table 2. The concentration-effect curves for the assays' positive reference compounds are shown in Fig. S1 of the ESI.† Detailed descriptions of the applied bioassays are available in König *et al.*<sup>33</sup> and Neale *et al.*<sup>31</sup> Cell viability was assessed in parallel to induction for all assays. Cell viability in AREc32 and AhR CALUX was measured using PrestoBlue, a cell permeable resazurin-based solution. For all other assays, the ToxBLazer DualScreen Kit was used, which combines the ratiometric reporter gene readout of  $\beta$ -lactamase activity with a third fluorometric readout to estimate cytotoxicity. Live-cell analysis

using an IncuCyte S3 live cell imaging system (Essen BioScience, Ann Arbor, Michigan, USA) was also applied to assess cell viability in the AhR CALUX assay. Phase contrast images were acquired 24 h after dosing (48 h after seeding). Quantitative analysis of cell confluency was performed using the IncuCyte S3 software. Confluency is a good surrogate for cell proliferation, if changes in cell morphology are minor. A comparison of the two techniques to determine cytotoxicity is provided Fig. S2 of the ESI,† with IncuCyte recommended for measuring cell viability in future studies.

### 2.4. Data evaluation

All bioassay data were evaluated using linear concentration-effect curves at the low-effect linear portion of the otherwise nonlinear concentration-effect curves. The effect concentration causing 10% effect (EC<sub>10</sub>) was determined for assays indicative of xenobiotic metabolism and receptor-mediated effects where a maximum effect could be reached, while an effect concentration causing an induction ratio of 1.5 (EC<sub>IR1.5</sub>) was derived for the adaptive stress response assays. To ensure the concentration-effect curves were linear, effects greater than 40% or induction ratios (IR) greater than 5, as well as concentrations causing more than 10% cytotoxicity, were excluded. For assays run in antagonist mode, the effect concentration causing a suppression ratio of 0.2 (EC<sub>SR0.2</sub>) was also derived from the linear portion of the concentration-effect curves excluding concentrations causing more than 1% cytotoxicity. Further information about the applied data evaluation can be found in Escher *et al.*<sup>22</sup> and Neale *et al.*<sup>31</sup> The

Table 2 Overview of applied bioassays

Endpoint	Assay	Method reference	Positive reference compound	EC	Positive reference compound EC value
Activation of aryl hydrocarbon receptor (AhR)	AhR CALUX	Brennan <i>et al.</i> <sup>61</sup>	2,3,7,8-Tetrachlorodibenzo- <i>p</i> -dioxin (TCDD)	EC <sub>10</sub>	$(5.92 \pm 0.16) \times 10^{-13}$ M
Binding to peroxisome proliferator-activated receptor gamma (PPAR $\gamma$ )	PPAR $\gamma$ - <i>bla</i>	Neale <i>et al.</i> <sup>31</sup>	Rosiglitazone	EC <sub>10</sub>	$(5.68 \pm 0.37) \times 10^{-10}$ M
Activation of estrogen receptor (ER)	ER $\alpha$ GeneBLAzer	König <i>et al.</i> <sup>33</sup>	17 $\beta$ -Estradiol	EC <sub>10</sub>	$(9.87 \pm 0.60) \times 10^{-12}$ M
Inhibition of estrogen receptor (ER)	ER $\alpha$ GeneBLAzer	König <i>et al.</i> <sup>33</sup>	Tamoxifen	EC <sub>SR0.2</sub>	$(2.46 \pm 0.18) \times 10^{-5}$ M
Activation of androgen receptor (AR)	AR GeneBLAzer	König <i>et al.</i> <sup>33</sup>	Metribolone (R1881)	EC <sub>10</sub>	$(4.10 \pm 0.43) \times 10^{-11}$ M
Inhibition of androgen receptor (AR)	AR GeneBLAzer	König <i>et al.</i> <sup>33</sup>	Cyproterone acetate	EC <sub>SR0.2</sub>	$(2.45 \pm 0.42) \times 10^{-8}$ M
Activation of glucocorticoid receptor (GR)	GR GeneBLAzer	König <i>et al.</i> <sup>33</sup>	Dexamethasone	EC <sub>10</sub>	$(2.08 \pm 0.05) \times 10^{-10}$ M
Inhibition of glucocorticoid receptor (GR)	GR GeneBLAzer	König <i>et al.</i> <sup>33</sup>	Mifepristone(RU486)	EC <sub>SR0.2</sub>	$(3.98 \pm 0.28) \times 10^{-10}$ M
Activation of progesterone receptor (PR)	PR GeneBLAzer	König <i>et al.</i> <sup>33</sup>	Promegestone	EC <sub>10</sub>	$(1.81 \pm 0.08) \times 10^{-11}$ M
Inhibition of progesterone receptor (PR)	PR GeneBLAzer	König <i>et al.</i> <sup>33</sup>	Mifepristone (RU486)	EC <sub>SR0.2</sub>	$(3.00 \pm 0.45) \times 10^{-10}$ M
Oxidative stress response	AREc32	Escher <i>et al.</i> , <sup>46</sup> Wang <i>et al.</i> <sup>62</sup>	<i>tert</i> -Butylhydroquinone ( <i>t</i> BHQ)	EC <sub>IR1.5</sub>	$(1.56 \pm 0.03) \times 10^{-6}$ M
NF- $\kappa$ B response	NF- $\kappa$ B- <i>bla</i>	König <i>et al.</i> <sup>33</sup>	Tumor necrosis factor alpha (TNF $\alpha$ )	EC <sub>IR1.5</sub>	$11.1 \pm 0.21$ ng L <sup>-1</sup>

EC values were expressed in units of relative enrichment factor (REF), which incorporates sample enrichment by SPE and dilution in the assay.<sup>42</sup>

To translate the effect of a sample in a specific bioassay to the concentration of a reference compound that would elicit the same response, the EC values were converted to bio-analytical equivalent concentrations from bioanalysis ( $BEQ_{bio}$ ).  $BEQ_{bio}$  was calculated using eqn (2) with the EC value of the sample and the corresponding EC value of the reference compound (ref).

$$BEQ_{bio} = \frac{EC_{10}(\text{ref})}{EC_{10}(\text{sample})} \text{ or } \frac{EC_{IR1.5}(\text{ref})}{EC_{IR1.5}(\text{sample})} \text{ or } \frac{EC_{SR0.2}(\text{ref})}{EC_{SR0.2}(\text{sample})} \quad (2)$$

$BEQ_{bio}$  before treatment ( $BEQ_{bio, \text{influent}}$ ) and after treatment ( $BEQ_{bio, \text{effluent}}$ ) were used to assess the removal efficacy of the studied wetlands, as well as the conventional WWTP (eqn (3)). Errors were calculated as described by König *et al.*<sup>33</sup>

$$BEQ_{bio} \text{ Removal (\%)} = \frac{BEQ_{bio, \text{influent}} - BEQ_{bio, \text{effluent}}}{BEQ_{bio, \text{influent}}} \times 100 \quad (3)$$

### 3. Results and discussion

#### 3.1. Chemical analysis

A range of conventional wastewater parameters were assessed, with the results provided in Table S1.† Effluent water temperatures in the treatment wetlands ranged from 19.3–22.7 °C in July and from 9.6–11.0 °C in November. The organic load of the influent wastewater in July was higher than in November, which was marked by elevated  $CBOD_5$  and TOC concentrations in July (761 mg L<sup>-1</sup> and 499 mg L<sup>-1</sup>, respectively) compared to November (304 mg L<sup>-1</sup> and 242 mg L<sup>-1</sup>, respectively). Effluent  $CBOD_5$  concentrations from the treatment wetlands were under 10 mg L<sup>-1</sup> for all systems in July except for H50p, which exhibited an effluent concentration of 59 mg L<sup>-1</sup>. Effluent  $CBOD_5$  concentrations from the treatment wetlands in November were less than 2 mg L<sup>-1</sup>, except for H50p, which was 30 mg L<sup>-1</sup>. The redox potential in the effluent from each wetland system increased compared to the wetland influent (SEP (out)). The positive redox values in the effluent of the intensified wetlands (+64.1 to +256 mV) indicated aerobic conditions, while in H50p, reducing conditions persisted (-184 mV in July; -208 mV in November). The ammonium-nitrogen (NH<sub>4</sub>-N) and total nitrogen (TN) concentrations in the wetland influent were 83 mg L<sup>-1</sup> and 97 mg L<sup>-1</sup>, respectively, in July and 62 mg L<sup>-1</sup> and 72 mg L<sup>-1</sup>, respectively, in November. As a result of the oxidizing conditions in the intensified wetlands (VAp, VAp + VSp, HAp, R, HMc and HM), NH<sub>4</sub>-N was also well removed, with effluent NH<sub>4</sub>-N concentrations of 1.4 mg L<sup>-1</sup> or lower, regardless of water temperature. The moderately aerobic conditions observed in VAp

and R, as evidenced by dissolved oxygen concentrations in July (VAp: 5.5 mg L<sup>-1</sup>; R: 2.0 mg L<sup>-1</sup>) and November (VAp: 8.1 mg L<sup>-1</sup>; R: 5.2 mg L<sup>-1</sup>), resulted in low effluent TN concentrations (July, VAp: 27 mg L<sup>-1</sup>; R: 12 mg L<sup>-1</sup>; November, VAp: 33 mg L<sup>-1</sup>; R: 22 mg L<sup>-1</sup>) compared to the other wetlands. The horizontal flow aerated wetlands HAp and HMc exhibited effluent TN concentrations ranging from 40–51 mg L<sup>-1</sup>. The conventional horizontal flow wetland H50p did not exhibit notable removal of TN or NH<sub>4</sub>-N but efficiently removed nitrate, due to the lack of oxidising conditions, which is consistent with previous studies on this treatment system.<sup>20,43</sup>

As expected from their widespread use, all seven indicator micropollutants were detected in the outlet of the septic tank feeding the constructed wetlands, as well as the influent to the WWTP in the µg L<sup>-1</sup> range (Fig. 1 and ESI,† Table S2). The food additives caffeine and acesulfame were found at the highest concentrations in the inlet to the WWTP and the outlet of the septic tank. Both caffeine and acesulfame have previously been detected in wastewater influent in Germany in the µg L<sup>-1</sup> concentration range.<sup>44,45</sup> Despite the high concentration of caffeine in the water feeding the wetlands, it was rarely detected in the treated effluent (ESI,† Table S2) due to its high biodegradability under all redox conditions.

Similarly, the concentrations of pharmaceuticals ibuprofen and naproxen, which are readily to moderately biodegradable under aerobic conditions, were also often below the LOD after treatment (ESI,† Table S2). In contrast, the corrosion inhibitor benzotriazole and pharmaceuticals carbamazepine and diclofenac were detected in the effluent of all wetland systems, as well as in the effluent of the conventional WWTP (ESI,† Table S2). This corresponded well with the reported negligible to low biodegradability of these compounds.<sup>21</sup>

#### 3.2. Bioanalysis

EC values in units of REF are provided in Table S3,† with the concentration-effect curves shown in Fig. S3 to S14.†  $BEQ_{bio}$  values in units of ng L<sup>-1</sup> are provided in Table 3, though it should be noted that it was not possible to derive  $BEQ_{bio}$  for inhibition of ER, inhibition of GR and activation of PR as either no effect was observed up to the maximum REF or cytotoxicity masked the effect. All samples were active in the assays indicative of activation of AhR, binding to PPAR<sub>γ</sub>, oxidative stress response and NF-κB response, which fits with previous observations in samples of raw and treated wastewater.<sup>22,46</sup> A wide range of chemicals are active in assays indicative of xenobiotic metabolism and adaptive stress responses, with Martin *et al.*<sup>37</sup> showing that 52% of 320 environmental chemicals induced the Nrf2 ARE reporter gene, with 46% and 17% of the studied chemicals activating PPAR<sub>γ</sub> and AhR, respectively. The NF-κB response was the most responsive assay in the current study, with effects in SEP (out) and H50p observed after 50 times dilution (REF 0.02). Wastewater effluent has previously been shown to activate the NF-κB response at low REF,<sup>40</sup> though the causative chemicals are currently

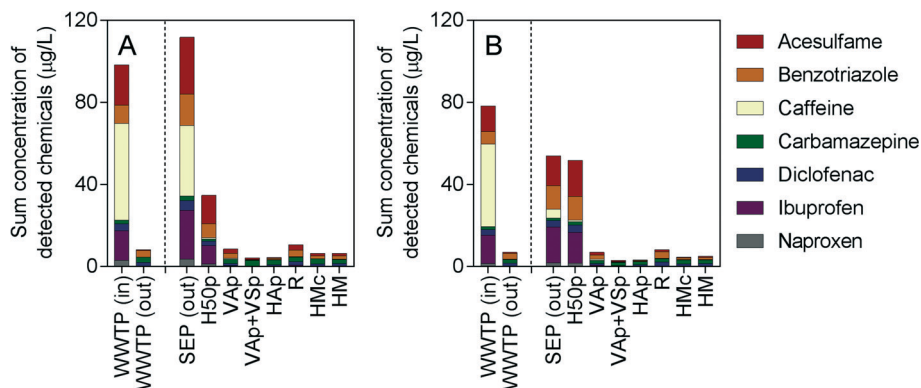


Fig. 1 Sum of detected chemicals in units of  $\mu\text{g L}^{-1}$  in A) July and B) November 2016. SEP (out) denotes the influent to the treatment wetlands. Measured concentrations are also provided in Table S2 of the ESI.†

unknown, with only 3% of chemicals in the US EPA ToxCast database inducing a response.<sup>47</sup>

A suite of assays indicative of activation and inhibition of hormonal activity were also applied, though many of the influent and effluent samples were very cytotoxic, leaving a small window for detection of the effect. Activation of ER was the most responsive, followed by activation of GR, which fits with previous observations from wastewater and surface water.<sup>1,22</sup> It should be noted that activation of GR could only be quantified in the effluent from the intensified wetlands, with cytotoxicity masking the effect in WWTP (in), SEP (out) and H50p. In contrast, activation of AR could only be detected in the influent to the WWTP. While SEP (out) had no agonistic or antagonistic activity on the AR (or activity was masked by cytotoxicity), the effluent from several of the intensified wetlands showed antagonistic effects on AR. Generally, androgenic activity is more common in wastewater, while anti-androgenic activity is more frequently detected in environmental waters.<sup>22</sup> However, other studies have found anti-androgenic activity in wastewater effluent<sup>48</sup> and many environmental estrogenic compounds can also act as anti-androgenic compounds.<sup>49</sup> None of the samples caused inhibition of ER or GR at non-cytotoxic concentrations, while weak inhibition of PR was detected in the effluent of the intensified wetlands in November.

### 3.3. How well did the studied wetlands reduce the chemical concentration and biological activity?

The treatment efficacy of the conventional WWTP and pilot-scale constructed wetlands was assessed using both indicator chemicals and bioanalysis. The intensified wetlands generally showed greater removal of the indicator micropollutants compared to the conventional wetland design H50p, with micropollutant removal in the intensified wetlands similar to or better than the conventional WWTP (Table 4, Fig. S15†). The lack of oxygen in H50p meant that anoxic, nitrate-reducing conditions dominated and removal efficacy was lower, which agrees with findings of the preceding study<sup>20</sup> and other studies that found less degradation of PPCPs in

wetland sediment under anaerobic conditions compared to aerobic conditions.<sup>50</sup> Biodegradation is expected to be a more important removal mechanism than sorption to sediment/soil or plants, as the majority of the indicator micropollutants are polar or even charged (diclofenac, ibuprofen, naproxen) and have octanol–water partition coefficients ( $\log K_{ow}$ ) of their neutral species of less than 4 indicating low hydrophobicity and high mobility in aquatic environments (Table S2†).

The concentration of ibuprofen was reduced to below the LOD after treatment in all intensified wetlands, while only 61 and 13% was removed by H50p in July and November, respectively. Ibuprofen has previously been shown to be well removed by aerobic degradation processes,<sup>30</sup> explaining the high removal in the intensified systems.

Carbamazepine was poorly removed in the conventional WWTP and all wetland systems except H50p in the July sampling, where removal was 48% (Table 4). Carbamazepine was previously reported to be poorly removed in a range of constructed wetland types and conventional WWTP due its recalcitrant nature.<sup>35,36,51</sup> The limited removal observed in H50p, although only in July, could be due to reductive transformation processes enabled under anoxic nitrate-reducing conditions.<sup>20,52</sup>

Acesulfame was removed by more than 90% with exception of H50p (Table 4). This is consistent with previous findings in these systems,<sup>20</sup> as well as in several WWTPs and sand filtration of surface water.<sup>53</sup>

The intensified wetlands were also unable to remove diclofenac effectively, with the exception of VAp + VSp and HAp in July (96% and 85% removal, respectively). Diclofenac removal by WWTPs can be highly variable, and the influence of operational conditions is not yet fully understood.<sup>21,54</sup> However, results of a previous study on these wetlands suggested that diclofenac removal in treatment wetlands was most effective when high dissolved oxygen concentrations were present in conjunction with low concentrations of organic carbon.<sup>20</sup> This is a plausible explanation for why diclofenac was most efficiently removed in the two-stage system VAp + VSp. The change in season from summer (effluent

Table 3 BEC<sub>50</sub> values for the studied bioassays (ng L<sup>-1</sup>)

		Activation of AhR	Binding to PPAR <sub>γ</sub>	Activation of ER	Activation of AR	Inhibition of AR	Activation of GR	Inhibition of PR	Oxidative stress response	NF-κB response
WWTP (in)	July	(2.53 ± 0.12) × 10 <sup>-1</sup>	(7.19 ± 0.87) × 10 <sup>2</sup>	(2.35 ± 0.17) × 10 <sup>1</sup>	(2.38 ± 0.27) × 10 <sup>1</sup>	Cytotoxic	Cytotoxic	Cytotoxic	(9.23 ± 0.46) × 10 <sup>5</sup>	(2.22 ± 0.14) × 10 <sup>2</sup>
	November	(2.70 ± 0.11) × 10 <sup>-1</sup>	(9.36 ± 0.77) × 10 <sup>2</sup>	(1.05 ± 0.01) × 10 <sup>1</sup>	(1.42 ± 0.18) × 10 <sup>1</sup>	Cytotoxic	Cytotoxic	Cytotoxic	(8.66 ± 0.38) × 10 <sup>5</sup>	(3.09 ± 0.11) × 10 <sup>1</sup>
WWTP (out)	July	(1.18 ± 0.05) × 10 <sup>-1</sup>	(8.31 ± 0.66) × 10 <sup>1</sup>	(4.20 ± 0.29) × 10 <sup>-1</sup>	Cytotoxic	Cytotoxic	(1.71 ± 0.06) × 10 <sup>1</sup>	Cytotoxic	(1.37 ± 0.04) × 10 <sup>5</sup>	(3.42 ± 0.15) × 10 <sup>1</sup>
	November	(1.30 ± 0.05) × 10 <sup>-1</sup>	(1.34 ± 0.14) × 10 <sup>2</sup>	(7.05 ± 0.52) × 10 <sup>-1</sup>	Cytotoxic	Cytotoxic	(1.94 ± 0.09) × 10 <sup>1</sup>	Cytotoxic	(1.69 ± 0.04) × 10 <sup>5</sup>	(1.21 ± 0.08) × 10 <sup>2</sup>
SEP (out)	July	(8.32 ± 0.50) × 10 <sup>-1</sup>	(5.77 ± 0.58) × 10 <sup>2</sup>	(3.12 ± 0.22) × 10 <sup>1</sup>	Cytotoxic	(3.35 ± 0.72) × 10 <sup>4</sup>	Cytotoxic	Cytotoxic	(1.07 ± 0.03) × 10 <sup>6</sup>	(5.62 ± 0.27) × 10 <sup>2</sup>
	November	(4.44 ± 0.18) × 10 <sup>-1</sup>	(7.65 ± 0.62) × 10 <sup>2</sup>	(1.97 ± 0.05) × 10 <sup>1</sup>	Cytotoxic	(2.81 ± 0.63) × 10 <sup>4</sup>	Cytotoxic	Cytotoxic	(8.48 ± 0.30) × 10 <sup>5</sup>	(5.10 ± 0.30) × 10 <sup>2</sup>
H50p	July	(2.93 ± 0.13) × 10 <sup>-1</sup>	(4.61 ± 0.42) × 10 <sup>2</sup>	(2.75 ± 0.21) × 10 <sup>1</sup>	Cytotoxic	Cytotoxic	Cytotoxic	Cytotoxic	(4.95 ± 0.15) × 10 <sup>5</sup>	(5.63 ± 0.23) × 10 <sup>2</sup>
	November	(1.65 ± 0.11) × 10 <sup>-1</sup>	(5.91 ± 0.81) × 10 <sup>2</sup>	(1.15 ± 0.08) × 10 <sup>1</sup>	Cytotoxic	Cytotoxic	Cytotoxic	Cytotoxic	(4.07 ± 0.12) × 10 <sup>5</sup>	(7.37 ± 0.38) × 10 <sup>2</sup>
VAp	July	(2.13 ± 0.10) × 10 <sup>-1</sup>	(7.58 ± 0.58) × 10 <sup>1</sup>	(6.52 ± 0.44) × 10 <sup>-1</sup>	Cytotoxic	(1.07 ± 0.29) × 10 <sup>4</sup>	(1.88 ± 0.06) × 10 <sup>1</sup>	Cytotoxic	(1.47 ± 0.04) × 10 <sup>5</sup>	(4.00 ± 0.21) × 10 <sup>1</sup>
	November	(1.02 ± 0.05) × 10 <sup>-1</sup>	(6.54 ± 0.55) × 10 <sup>1</sup>	(4.61 ± 0.30) × 10 <sup>-1</sup>	>50	(4.67 ± 2.38) × 10 <sup>3</sup>	(1.17 ± 0.04) × 10 <sup>1</sup>	Cytotoxic	(1.19 ± 0.03) × 10 <sup>5</sup>	(4.15 ± 0.22) × 10 <sup>1</sup>
VAp + VSp	July	(2.08 ± 0.10) × 10 <sup>-1</sup>	(3.65 ± 0.28) × 10 <sup>1</sup>	(1.41 ± 0.09) × 10 <sup>-1</sup>	>50	(1.58 ± 0.44) × 10 <sup>3</sup>	(4.58 ± 0.14) × 10 <sup>0</sup>	(5.86 ± 0.92) × 10 <sup>0</sup>	(8.87 ± 0.28) × 10 <sup>4</sup>	(2.49 ± 0.08) × 10 <sup>1</sup>
	November	(7.72 ± 0.35) × 10 <sup>-2</sup>	(3.54 ± 0.32) × 10 <sup>1</sup>	(1.48 ± 0.10) × 10 <sup>-1</sup>	>50	(1.97 ± 0.50) × 10 <sup>3</sup>	(1.99 ± 0.08) × 10 <sup>0</sup>	(4.62 ± 0.74) × 10 <sup>0</sup>	(5.31 ± 0.17) × 10 <sup>4</sup>	(6.13 ± 0.26) × 10 <sup>0</sup>
HAp	July	(1.25 ± 0.07) × 10 <sup>-1</sup>	(5.14 ± 0.40) × 10 <sup>1</sup>	(2.08 ± 0.15) × 10 <sup>-1</sup>	Cytotoxic	(5.00 ± 1.46) × 10 <sup>3</sup>	(7.95 ± 0.55) × 10 <sup>0</sup>	Cytotoxic	(9.09 ± 0.26) × 10 <sup>4</sup>	(2.22 ± 0.08) × 10 <sup>1</sup>
	November	(7.62 ± 0.30) × 10 <sup>-2</sup>	(6.24 ± 0.58) × 10 <sup>1</sup>	(2.19 ± 0.15) × 10 <sup>-1</sup>	>50	(1.14 ± 0.36) × 10 <sup>3</sup>	Cytotoxic	Cytotoxic	(7.87 ± 0.25) × 10 <sup>4</sup>	(1.87 ± 0.09) × 10 <sup>1</sup>
R	July	(1.41 ± 0.05) × 10 <sup>-1</sup>	(7.62 ± 0.60) × 10 <sup>1</sup>	(6.84 ± 0.45) × 10 <sup>-1</sup>	Cytotoxic	(1.31 ± 0.32) × 10 <sup>3</sup>	(1.74 ± 0.06) × 10 <sup>1</sup>	Cytotoxic	(1.08 ± 0.04) × 10 <sup>5</sup>	(5.53 ± 0.30) × 10 <sup>1</sup>
	November	(1.00 ± 0.04) × 10 <sup>-1</sup>	(9.91 ± 0.77) × 10 <sup>1</sup>	(5.63 ± 0.39) × 10 <sup>-1</sup>	>50	(6.59 ± 1.30) × 10 <sup>2</sup>	(1.79 ± 0.05) × 10 <sup>1</sup>	Cytotoxic	(8.70 ± 0.26) × 10 <sup>4</sup>	(3.80 ± 0.41) × 10 <sup>1</sup>
HMc	July	(1.10 ± 0.05) × 10 <sup>-1</sup>	(1.31 ± 0.10) × 10 <sup>2</sup>	(3.76 ± 0.28) × 10 <sup>-1</sup>	Cytotoxic	Cytotoxic	Cytotoxic	Cytotoxic	(1.04 ± 0.03) × 10 <sup>5</sup>	(1.51 ± 0.07) × 10 <sup>1</sup>
	November	(6.99 ± 0.30) × 10 <sup>-2</sup>	(1.13 ± 0.09) × 10 <sup>2</sup>	Cytotoxic	Cytotoxic	Cytotoxic	Cytotoxic	Cytotoxic	(6.13 ± 0.18) × 10 <sup>4</sup>	(1.40 ± 0.09) × 10 <sup>1</sup>
HM	July	(1.16 ± 0.06) × 10 <sup>-1</sup>	(9.52 ± 0.71) × 10 <sup>1</sup>	(2.99 ± 0.22) × 10 <sup>-1</sup>	Cytotoxic	Cytotoxic	(8.97 ± 0.55) × 10 <sup>0</sup>	Cytotoxic	(9.06 ± 0.28) × 10 <sup>4</sup>	(2.48 ± 0.09) × 10 <sup>1</sup>
	November	(8.37 ± 0.35) × 10 <sup>-2</sup>	(1.42 ± 0.10) × 10 <sup>2</sup>	(5.16 ± 0.43) × 10 <sup>-1</sup>	Cytotoxic	Cytotoxic	(6.63 ± 0.33) × 10 <sup>0</sup>	Cytotoxic	(3.82 ± 0.17) × 10 <sup>4</sup>	(1.35 ± 0.10) × 10 <sup>1</sup>
HM40	July	(1.79 ± 0.07) × 10 <sup>-1</sup>	(2.10 ± 0.16) × 10 <sup>2</sup>	Cytotoxic	Cytotoxic	Cytotoxic	(2.11 ± 0.11) × 10 <sup>1</sup>	Cytotoxic	(2.42 ± 0.11) × 10 <sup>5</sup>	(3.48 ± 0.12) × 10 <sup>1</sup>
	November	(1.25 ± 0.05) × 10 <sup>-1</sup>	(3.42 ± 0.28) × 10 <sup>2</sup>	Cytotoxic	Cytotoxic	Cytotoxic	Cytotoxic	Cytotoxic	(8.82 ± 0.73) × 10 <sup>4</sup>	(1.06 ± 0.04) × 10 <sup>1</sup>
HM70	July	(9.62 ± 0.47) × 10 <sup>-2</sup>	(1.36 ± 0.10) × 10 <sup>2</sup>	Cytotoxic	Cytotoxic	Cytotoxic	Cytotoxic	Cytotoxic	(8.15 ± 0.31) × 10 <sup>4</sup>	(2.71 ± 0.17) × 10 <sup>1</sup>
	November	(7.60 ± 0.37) × 10 <sup>-2</sup>	(1.67 ± 0.14) × 10 <sup>2</sup>	Cytotoxic	Cytotoxic	Cytotoxic	Cytotoxic	Cytotoxic	(5.55 ± 0.21) × 10 <sup>4</sup>	(1.91 ± 0.08) × 10 <sup>1</sup>

NB: All samples were cytotoxic or had no effect in ERα GeneBLAzer (antagonist mode), GR GeneBLAzer (antagonist mode), and PR GeneBLAzer (agonist mode).

**Table 4** Removal efficacy of the indicator micropollutants by conventional and intensified treatment wetlands, as well as conventional WWTP calculated using eqn (1) and the chemical concentrations reported in the ESI, Table S2

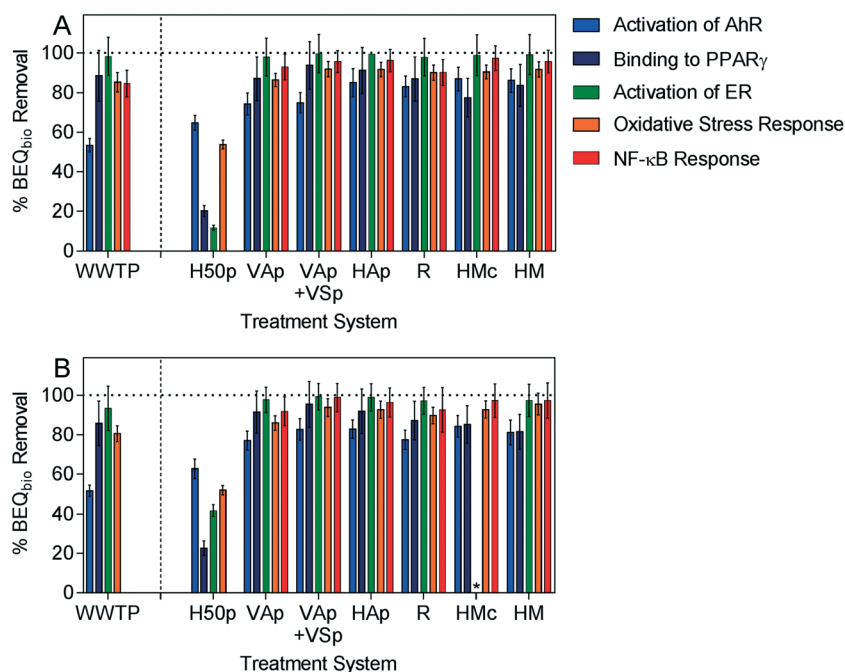
		WWTP	H50p	VAp	VAp + VSp	HAp	R	HMc	HM
Caffeine	July	>99%	99%	99%	>99%	>99%	>99%	>99%	>99%
	November	>99%	80%	90%	>96%	>96%	94%	93%	>96%
Ibuprofen	July	>94%	61%	>97%	>97%	>97%	>97%	>97%	>97%
	November	>94%	13%	>95%	>95%	>95%	>95%	>95%	>95%
Naproxen	July	98%	69%	94%	>98%	>98%	93%	>98%	98%
	November	>95%	17%	94%	>97%	>97%	94%	>97%	>97%
Benzotriazole	July	64%	55%	84%	97%	96%	79%	90%	89%
	November	54%	0%	81%	98%	97%	72%	93%	90%
Diclofenac	July	44%	57%	79%	96%	85%	60%	74%	74%
	November	44%	-14%	72%	88%	76%	36%	62%	56%
Acesulfame	July	97%	50%	92%	97%	98%	91%	96%	96%
	November	95%	-21%	91%	96%	98%	93%	98%	96%
Carbamazepine	July	-47%	48%	-4%	-27%	-16%	4%	-11%	3%
	November	-25%	-31%	-28%	-31%	-36%	-20%	-55%	-41%

water temperatures of the wetland systems ranging from 19.3–21.3 °C) to autumn (effluent water temperatures of the wetland systems ranging from 9.6–11.0 °C) had little effect on the removal of the indicator micropollutants in the intensified systems, though it did influence the removal efficacy of H50p, with decreasing removal of all compounds compared to July (Fig. S15†). Increased removal in warmer months has also been observed previously<sup>35</sup> and can be related to increased microbial activity in warmer conditions.

Removal of biological activity could only be assessed for five of the studied endpoints, activation of AhR, binding to PPAR $\gamma$ , activation of ER, oxidative stress response and NF- $\kappa$ B response, as cytotoxicity masked induction in the WWTP (in

and SEP (out) samples for the other assays. Similar to the indicator micropollutants, the ability of intensified systems to remove biological activity was comparable to or greater than the removal efficacy of the conventional WWTP for all assays, while the conventional system H50p had the lowest removal efficacy (Fig. 2, Table S4†).

In all six intensified wetlands no influence of the two sampling seasons summer (July) and late autumn (November) on removal of biological activity was observed for any biological endpoint. In contrast to the indicator micropollutants, the removal efficacy of H50p was comparable between the two sampling events, suggesting that the difference in temperature and plant growth did not have a significant impact on the



**Fig. 2** Removal of BEQ<sub>bio</sub> (%) after treatment in A) July and B) November for assays indicative of activation of AhR, binding to PPAR $\gamma$ , activation of ER, oxidative stress response and NF- $\kappa$ B response. \* removal could not be calculated for HMc due to cytotoxicity. The associated data are given in the ESI, Table S4.† Error bars were calculated using error propagation from errors derived by concentration-effect curve modeling.



removal of compounds causing biological effects. Some of the active compounds may be more hydrophobic, potentially making sorption a more relevant removal process, with seasonality less likely to have an effect. Estrogenic activity was very well removed by the intensified wetlands, with 97 to 99.5% reduction in  $BEQ_{bio}$  after treatment. Several studies have also found good removal of estrogenic activity in wetlands treating municipal wastewater<sup>28</sup> and agricultural wastewater.<sup>55</sup>

The smallest reduction in  $BEQ_{bio}$  was observed for compounds that activated AhR, with between 74 to 87% reduction for the intensified systems. However, it should be noted that this was considerably better than removal by the conventional WWTP, where  $BEQ_{bio}$  for activation of AhR was only reduced by around 50%. Similarly, between 46 to 69% of AhR activity was removed in a water reclamation plant after activated carbon filtration and ozonation.<sup>56</sup> Ávila *et al.*<sup>30</sup> applied an AhR yeast assay to assess the ability of a hybrid constructed wetland to remove dioxin-like activity in wastewater spiked with micropollutants and found complete removal of activity after vertical flow and horizontal flow wetlands, though activity increased again after treatment in the FWS wetland. Since the AhR is a very promiscuous receptor that binds a diversity of chemicals,<sup>57</sup> it is not possible to explain what types of chemicals were dominating the effect removal and what types of chemicals caused the differences between the WWTP and the wetlands. However one feature that AhR ligands have in common is that they are typically fairly large, neutral and hydrophobic chemicals, which contrasts the physicochemical properties of the indicator chemicals that were included in chemical analysis.

Few studies have applied bioassays to assess the treatment efficacy of constructed wetlands and most focussed on estrogenicity. Therefore, it was not possible to compare the results for the other assays in similar wetland systems because to our knowledge no such experiments were previously conducted. However, Bain *et al.*<sup>1</sup> found between 69 to 100% reduction in  $PPAR\gamma$  activity in three WWTPs, with the greatest removal found for a WWTP which included a constructed wetland for excess nutrient removal as the final step in the treatment train. Between 77 to 95% of  $PPAR\gamma$  activity was removed by the intensified wetlands in the current study, with the two-stage VAp + VSp being the most effective system.

Further, the reduction in  $BEQ_{bio}$  for the oxidative stress response was considerably greater in the intensified wetlands (86 to 96%) than previously reported for a conventional WWTP (40% reduction).<sup>58</sup> The NF- $\kappa$ B assay has not previously been applied to assess WWTP efficacy, but over 90% reduction in  $BEQ_{bio}$  was observed in all intensified wetlands.

To explore the effect of aeration on removal, the removal of  $BEQ_{bio}$  was compared for identical intensive horizontal flow systems, HM and HMc, with aeration turned off from 40 to 70% fractional distance in HM (Fig. 3). Over 90% of  $BEQ_{bio}$  for the NF- $\kappa$ B response was removed prior to aeration being shut off, with further treatment having little impact on the biological activity. Further, the majority of biological activity

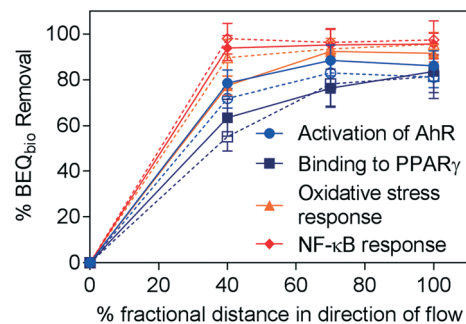


Fig. 3 Removal of  $BEQ_{bio}$  (%) along the flow path in HM for assays indicative of activation of AhR, binding to  $PPAR\gamma$ , activation of ER, oxidative stress response and NF- $\kappa$ B response (eqn (3)). Samples collected in July indicated by closed symbols and solid lines; samples collected in November indicated by open symbols and dashed lines. Error bars were calculated using error propagation.

was removed within 40% distance in direction of flow for activation of AhR, binding to  $PPAR\gamma$  and oxidative stress response, with some additional decrease in effect in the zone that was slightly less aerobic but not fully anoxic, *i.e.* from HM40 to HM70. If removal was calculated between HM40 and HM70, it was 46% (July) and 39% (Nov) for AhR, and the step from HM70 to HM did not lead to any additional removal. For  $PPAR\gamma$  the incremental relative removal between HM40 and HM70 was 35% (July) and 51% (Nov), and the step from HM70 to the HM removed 30% (July) and 15% (Nov). If removal was calculated for each step separately for AREc32, the removal between HM40 and HM70 was 66% (July) and 37% (Nov), and the step from HM70 to HM removed no effect (July) and 31% (Nov).

This fits with previous findings by Ávila *et al.*<sup>30</sup> that the majority of the biological activity in a hybrid wetland system was removed by aerobic treatment processes. Overall, there was little difference in the absolute removal efficacy of HM and HMc (Fig. 2), suggesting that the change in aeration did not significantly alter removal of biological activity. While the indicator micropollutants were not analysed in the HM40 and HM70 samples, comparison of the micropollutant concentrations in the effluent of HM and HMc also shows little difference (Fig. 1).

Overall, the indicator micropollutants and bioanalysis both show that the studied intensified wetlands have a similar or greater capacity to reduce pollutant load and biological activity as the conventional WWTP. Further, conventional horizontal treatment wetlands under conditions of high organic loading and with low dissolved oxygen concentrations did neither efficiently remove biological activity nor the indicator micropollutants eliminable *via* oxidative pathways.

### 3.4. Does wetland treated effluent pose a risk to the receiving environment?

To evaluate the potential risks to the receiving environment, the chemical concentrations in the treated effluent were compared with proposed environmental quality standards (EQS).

Of the seven indicator micropollutants, proposed average annual EQS were available for five chemicals.<sup>59</sup> All wetland treatment processes reduced the concentration of naproxen below the proposed EQS of  $1.7 \mu\text{g L}^{-1}$ , while none of the measured benzotriazole concentrations, even in the wastewater influent, exceeded the proposed EQS of  $19 \mu\text{g L}^{-1}$ . In contrast, the concentration of carbamazepine was higher than the proposed EQS of  $2.0 \mu\text{g L}^{-1}$  after treatment in July, with the exception of conventional WWTP and H50p, which typically had the poorest removal of the other indicator micropollutants and biological activity. Further, none of the treatments reduced the concentration of diclofenac below the proposed EQS of  $0.05 \mu\text{g L}^{-1}$ , which is lower than the LOD in this study ( $0.12 \mu\text{g L}^{-1}$ ). The proposed EQS for ibuprofen,  $0.01 \mu\text{g L}^{-1}$ , was also lower than the LOD in the current study ( $0.81 \mu\text{g L}^{-1}$ ). While the poor removal of carbamazepine as well as diclofenac by all treatment processes may potentially be problematic, it should be noted that further dilution of the treated effluent in the freshwater environment is expected, with processes such as photodegradation, sorption or (bio-) transformation in the subsurface likely to reduce the concentrations of diclofenac and carbamazepine even further.<sup>21,36,50</sup>

Benchmarking the bioanalytical results is more difficult as effect-based trigger values for surface water have not been derived for the studied assays. As the effect in ER $\alpha$  GeneBLazer was expressed in  $17\beta$ -estradiol equivalent concentrations (EEQ), the results can be compared with the proposed European Union  $17\beta$ -estradiol EQS of  $0.4 \text{ ng L}^{-1}$ , though this only represents a single chemical and does not take into account the mixture effects. With the exception of H50p, all studied wetlands reduced the effluent concentrations to between  $0.14$ – $0.68 \text{ ng L}^{-1}$  EEQ, with treatment by HAp and VAp + VSp reducing the effluent concentration to below  $0.4 \text{ ng L}^{-1}$  EEQ in both July and November. Further, Jarošová *et al.*<sup>60</sup> derived safe concentrations of estrogenic equivalents (EEQ-SSE) for municipal effluents using a range of *in vitro* bioassays. While ER $\alpha$  GeneBLazer was not included in the study, the EEQ in the current study were in the range of proposed short-term exposure EEQ-SSE ( $0.5$  to  $2 \text{ ng L}^{-1}$  EEQ), with only effluent from HAp and VAp + VSp in the range of the long-term exposure EEQ-SSE ( $0.1$  to  $0.4 \text{ ng L}^{-1}$  EEQ). Work is currently ongoing to derive effect-based trigger values for a wider range of endpoints relevant for environmental waters.

## 4. Conclusions

In general, the removal efficacy of the biological effects aligned well with the removal efficacy of the well-degradable indicator chemicals but not with recalcitrant indicator chemicals such as carbamazepine. Using a comprehensive battery of bioassays, this study shows for the first time that intensified wetlands can remove biological activity to a greater extent than conventional wastewater treatment. In contrast, the conventional horizontal flow wetland H50p performed much poorer, which was also confirmed by chemical analysis and was consistent with earlier chemical analysis

of seven polar indicator chemicals.<sup>20</sup> Estrogenicity is commonly used as a biological endpoint indicator for wastewater treatment, and all intensified wetlands were able to remove estrogenic activity very well (97 to 99.5%). While improved removal of indicator micropollutants was observed for H50p in July, there was no difference in removal of biological activity with season. This suggests that the indicator micropollutants, which were selected based on their biodegradability, cannot be used to predict the removal of overall biological effects, emphasising the importance of applying bioanalysis complementary to chemical analysis.

Here we evaluated a wide range of bioassays but for future monitoring studies and investigations of temporal effects as well as different treatment conditions we propose a set of indicator bioassays as treatment performance indicators. Suitable for this purpose of surveillance monitoring in future studies would be a test battery that comprises bioassays for activation of AhR, activation of ER and the oxidative stress response because they yield different pictures of removal and they cover three different stages of the cellular toxicity pathway. In addition, and similar to what is proposed for surface water quality monitoring,<sup>31</sup> one could add one or more bioassays with whole organisms, such as the fish embryo test or an algal toxicity assay, to assure that all bioactive chemicals are captured by the bioassays.

Future studies on treatment wetland systems with the battery of indicator bioassays and indicator chemicals should include frequent and regular sampling on full-scale systems over the course of at least one year in order to encompass stochastic variability of influent and effluent wastewater, as well as any seasonal variations in removal of biological effects. A more extensive internal sampling in saturated treatment wetland systems along the flow path could also help to optimise the design of future treatment wetland systems.

## Conflicts of interest

There are no conflicts to declare.

## Acknowledgements

This work was supported in part by funding from the German Ministry of Education and Research (BMBF) within the context of the SMART-MOVE Project: Management of Highly Variable Water Resources in Semi-Arid Regions (FKZ: 02WM1355B). J. Nivala acknowledges the Helmholtz Centre for Environmental Research (UFZ) Integrated Projects Urban Transformations and Water Scarcity. The authors are particularly grateful to Katy Bernhard for her support in operation and sampling of the facility at Langenreichenbach and to Gabriele Strenge for support in indicator chemical analysis. Grit Weichert, Johannes Boog, Thomas Aubron, Carola Bönisch, and Karsten Marien are acknowledged for analytical support. Volker Dreher and his team (AZV Heidelberg) are acknowledged for support at the Langenreichenbach wastewater treatment plant. Christin Kühnert and Lisa Glauch are

thanked for bioassay experiments. We thank Rita Triebkorn for co-supervision of the Bachelor thesis of T. Haasis and helpful discussions.

## References

- 1 P. A. Bain, M. Williams and A. Kumar, *Environ. Toxicol. Chem.*, 2014, **33**, 2297–2307.
- 2 R. H. Kadlec and S. D. Wallace, *Treatment Wetlands*, CRC Press, Boca Raton, Florida, 2nd edn, 2009.
- 3 D. Austin and J. Nivala, *Ecol. Eng.*, 2009, **35**, 184–192.
- 4 J. Nivala, *PhD*, Aarhus University, 2012.
- 5 V. Matamoros, J. Puigagut, J. García and J. M. Bayona, *Chemosphere*, 2007, **69**, 1374–1380.
- 6 V. Matamoros, A. Caselles-Osorio, J. García and J. M. Bayona, *Sci. Total Environ.*, 2008, **394**, 171–176.
- 7 A. Dordio, J. Teimao, I. Ramalho, A. Carvalho and A. Candeias, *Sci. Total Environ.*, 2007, **380**, 237–246.
- 8 P. Verlicchi and E. Zambello, *Sci. Total Environ.*, 2014, **470–471**, 1281–1306.
- 9 H. Auvinen, I. Havran, L. Hubau, L. Vanseveren, W. Gebhardt, V. Linnemann, D. Van Oirschot, G. Du Laing and D. P. L. Rousseau, *Ecol. Eng.*, 2017, **100**, 157–164.
- 10 T. Lv, Y. Zhang, L. Zhang, P. N. Carvalho, C. A. Arias and H. Brix, *Water Res.*, 2016, **91**, 126–136.
- 11 L. Zhang, T. Lv, Y. Zhang, O. R. Stein, C. A. Arias, H. Brix and P. N. Carvalho, *Sci. Total Environ.*, 2017, **609**, 38–45.
- 12 Z. Chen, Y. Chen, J. Vymazal, L. Kule and M. Kozeluh, *Sci. Total Environ.*, 2017, **577**, 386–394.
- 13 A. M. Gorito, A. R. Ribeiro, C. M. R. Almeida and A. M. T. Silva, *Environ. Pollut.*, 2017, **227**, 428–443.
- 14 J. Vymazal, T. Dvořáková Březinová, M. Kozeluh and L. Kule, *Ecol. Eng.*, 2017, **98**, 354–364.
- 15 V. Matamoros, Y. Rodríguez and J. M. Bayona, *Ecol. Eng.*, 2017, **99**, 222–227.
- 16 V. Matamoros, J. Garcia and J. M. Bayona, *Water Res.*, 2008, **42**, 653–660.
- 17 E. Llorens, V. Matamoros, V. Domingo, J. M. Bayona and J. Garcia, *Sci. Total Environ.*, 2009, **407**, 2517–2524.
- 18 M. Breitholtz, M. Naslund, D. Strae, H. Borg, R. Grabic and J. Fick, *Ecotoxicol. Environ. Saf.*, 2012, **78**, 63–71.
- 19 R. Loos, R. Carvalho, D. C. Antonio, S. Cornero, G. Locoro, S. Tavazzi, B. Paracchini, M. Ghiani, T. Lettieri, L. Blaha, B. Jarosova, S. Voorspoels, K. Servaes, P. Haglund, J. Fick, R. H. Lindberg, D. Schwesig and B. M. Gawlik, *Water Res.*, 2013, **47**, 6475–6487.
- 20 S. Kahl, J. Nivala, M. van Afferden, R. A. Müller and T. Reemtsma, *Water Res.*, 2017, **125**, 490–500.
- 21 M. Jekel, W. Dott, A. Bergmann, U. Dunnbier, R. Gnirss, B. Haist-Gulde, G. Hamscher, M. Letzel, T. Licha, S. Lyko, U. Miehe, F. Sacher, M. Scheurer, C. K. Schmidt, T. Reemtsma and A. S. Ruhl, *Chemosphere*, 2015, **125**, 155–167.
- 22 B. I. Escher, M. Allinson, R. Altenburger, P. A. Bain, P. Balaguer, W. Busch, J. Crago, N. D. Denslow, E. Dopp, K. Hilscherova, A. R. Humpage, A. Kumar, M. Grimaldi, B. S. Jayasinghe, B. Jarosova, A. Jia, S. Makarov, K. A. Maruya, A. Medvedev, A. C. Mehinto, J. E. Mendez, A. Poulsen, E. Prochazka, J. Richard, A. Schifferli, D. Schlenk, S. Scholz, F. Shiraish, S. Snyder, G. Y. Su, J. Y. M. Tang, B. van der Burg, S. C. van der Linden, I. Werner, S. D. Westerheide, C. K. C. Wong, M. Yang, B. H. Y. Yeung, X. W. Zhang and F. D. L. Leusch, *Environ. Sci. Technol.*, 2014, **48**, 1940–1956.
- 23 M. L. Jugan, L. Oziol, M. Bimbot, V. Huteau, S. Tamisier-Karolak, J. P. Blondeau and Y. Levi, *Sci. Total Environ.*, 2009, **407**, 3579–3587.
- 24 A. L. Schroeder, G. T. Ankley, K. A. Houck and D. L. Villeneuve, *Environ. Toxicol. Chem.*, 2016, **35**, 513–525.
- 25 B. I. Escher, N. Bramaz and C. Ort, *J. Environ. Monit.*, 2009, **11**, 1836–1846.
- 26 B. I. Escher, M. Lawrence, M. Macova, J. F. Mueller, Y. Poussade, C. Robillot, A. Roux and W. Gernjak, *Environ. Sci. Technol.*, 2011, **45**, 5387–5394.
- 27 M. Macova, B. I. Escher, J. Reungoat, S. Carswell, K. L. Chue, J. Keller and J. F. Mueller, *Water Res.*, 2010, **44**, 477–492.
- 28 H. L. Song, X. L. Yang, K. Nakano, M. Nomura, O. Nishimura and X. N. Li, *Int. J. Environ. Anal. Chem.*, 2011, **91**, 600–614.
- 29 L. Xie, Y. Sapozhnikova, O. Bawardi and D. Schlenk, *Arch. Environ. Contam. Toxicol.*, 2004, **48**, 81–86.
- 30 C. Ávila, V. Matamoros, C. Reyes-Contreras, B. Pina, M. Casado, L. Mita, C. Rivetti, C. Barata, J. Garcia and J. M. Bayona, *Sci. Total Environ.*, 2014, **470**, 1272–1280.
- 31 P. A. Neale, R. Altenburger, S. Ait-Aïssa, F. Brion, W. Busch, G. de Aragão Umbuzeiro, M. S. Denison, D. Du Pasquier, K. Hilscherová, H. Hollert, D. A. Morales, J. Novák, R. Schlichting, T.-B. Seiler, H. Serra, Y. Shao, A. J. Tindall, K. E. Tollefsen, T. D. Williams and B. I. Escher, *Water Res.*, 2017, **123**, 734–750.
- 32 G. T. Ankley, R. S. Bennett, R. J. Erickson, D. J. Hoff, M. W. Hornung, R. D. Johnson, D. R. Mount, J. W. Nichols, C. L. Russom, P. K. Schmieder, J. A. Serrano, J. E. Tietge and D. L. Villeneuve, *Environ. Toxicol. Chem.*, 2010, **29**, 730–741.
- 33 M. König, B. I. Escher, P. A. Neale, M. Krauss, K. Hilscherova, J. Novak, I. Teodorovic, T. Schulze, S. Seidensticker, M. A. K. Hashmi, J. Ahlheim and W. Brack, *Environ. Pollut.*, 2017, **220**, 1220–1230.
- 34 P. A. Neale, S. Ait-Aïssa, W. Brack, N. Creusot, M. S. Denison, B. Deutschmann, K. Hilscherova, H. Hollert, M. Krauss, J. Novak, T. Schulze, T. B. Seiler, H. Serra, Y. Shao and B. I. Escher, *Environ. Sci. Technol.*, 2015, **49**, 14614–14624.
- 35 M. Hijosa-Valsero, V. Matamoros, R. Sidrach-Cardona, J. Martin-Villacorta, E. Becares and J. M. Bayona, *Water Res.*, 2010, **44**, 3669–3678.
- 36 S. Ruhmland, A. Wick, T. A. Ternes and M. Barjenbruch, *Ecol. Eng.*, 2015, **80**, 125–139.
- 37 M. T. Martin, D. J. Dix, R. S. Judson, R. J. Kavlock, D. M. Reif, A. M. Richard, D. M. Rotroff, S. Romanov, A. Medvedev, N. Poltoratskaya, M. Gambarian, M. Moeser, S. S. Makarov and K. A. Houck, *Chem. Res. Toxicol.*, 2010, **23**, 578–590.
- 38 F. D. L. Leusch, S. J. Khan, S. Laingam, E. Prochazka, S. Froscio, T. Trinh, H. F. Chapman and A. Humpage, *Water Res.*, 2014, **49**, 300–315.

- 39 S. O. Simmons, C. Y. Fan and R. Ramabhadran, *Toxicol. Sci.*, 2009, **111**, 202–225.
- 40 P. A. Neale, N. A. Munz, S. Ait-Aissa, R. Altenburger, F. Brion, W. Busch, B. I. Escher, K. Hilscherova, C. Kienle, J. Novak, T. B. Seiler, Y. Shao, C. Stamm and J. Hollender, *Sci. Total Environ.*, 2017, **576**, 785–795.
- 41 J. Nivala, T. Headley, S. Wallace, K. Bernhard, H. Brix, M. van Afferden and R. A. Muller, *Ecol. Eng.*, 2013, **61**, 527–543.
- 42 B. I. Escher and F. D. L. Leusch, *Bioanalytical tools in water quality assessment*, IWA Publishing, London, 2012.
- 43 J. Nivala, S. Wallace, T. Headley, K. Kassa, H. Brix, M. van Afferden and R. Muller, *Ecol. Eng.*, 2013, **61**, 544–554.
- 44 M. Scheurer, H. J. Brauch and F. T. Lange, *Anal. Bioanal. Chem.*, 2009, **394**, 1585–1594.
- 45 T. A. Ternes, M. Bonerz, N. Herrmann, B. Teiser and H. R. Andersen, *Chemosphere*, 2007, **66**, 894–904.
- 46 B. I. Escher, M. Dutt, E. Maylin, J. Y. M. Tang, S. Toze, C. R. Wolf and M. Lang, *J. Environ. Monit.*, 2012, **14**, 2877–2885.
- 47 US EPA, Interactive Chemical Safety for Sustainability (iCSS) Dashboard v2, <http://actor.epa.gov/dashboard/>, Accessed 7th Aug 2017.
- 48 K. F. Rao, N. Li, M. Ma and Z. J. Wang, *Front. Environ. Sci. Eng.*, 2014, **8**, 69–78.
- 49 P. Sohoni and J. P. Sumpter, *J. Endocrinol.*, 1998, **158**, 327–339.
- 50 J. L. Conkle, J. Gan and M. A. Anderson, *J. Soils Sediments*, 2012, **12**, 1164–1173.
- 51 V. Matamoros, C. Arias, H. Brix and J. M. Bayona, *Environ. Sci. Technol.*, 2007, **41**, 8171–8177.
- 52 A. König, C. Weidauer, B. Seiwert, T. Reemtsma, T. Unger and M. Jekel, *Water Res.*, 2016, **101**, 272–280.
- 53 S. Castronovo, A. Wick, M. Scheurer, K. Nödler, M. Schulz and T. A. Ternes, *Water Res.*, 2017, **110**, 342–353.
- 54 Y. J. Zhang, S. U. Geissen and C. Gal, *Chemosphere*, 2008, **73**, 1151–1161.
- 55 N. W. Shappell, L. O. Billey, D. Forbes, T. A. Matheny, M. E. Poach, G. B. Reddy and P. G. Hunt, *Environ. Sci. Technol.*, 2007, **41**, 444–450.
- 56 J. Reungoat, M. Macova, B. I. Escher, S. Carswell, J. F. Mueller and J. Keller, *Water Res.*, 2010, **44**, 625–637.
- 57 M. S. Denison and S. R. Nagy, *Annu. Rev. Pharmacol. Toxicol.*, 2003, **43**, 309–334.
- 58 J. Y. M. Tang, F. Buseti, J. W. A. Charrois and B. I. Escher, *Water Res.*, 2014, **60**, 289–299.
- 59 Oekotoxzentrum, Proposals for Acute and Chronic Quality Standards, <http://www.ecotoxcentre.ch/expert-service/quality-standards/proposals-for-acute-and-chronic-quality-standards/>, accessed 4th August 2017).
- 60 B. Jarošová, L. Bláha, J. P. Giesy and K. Hilscherová, *Environ. Int.*, 2014, **64**, 98–109.
- 61 J. C. Brennan, G. C. He, T. Tsutsumi, J. Zhao, E. Wirth, M. H. Fulton and M. S. Denison, *Environ. Sci. Technol.*, 2015, **49**, 11903–11912.
- 62 X. J. Wang, J. D. Hayes and C. R. Wolf, *Cancer Res.*, 2006, **66**, 10983–10994.