



Cite this: *Chem. Commun.*, 2019, 55, 13235

Received 18th August 2019,  
Accepted 20th September 2019

DOI: 10.1039/c9cc06399d

rsc.li/chemcomm

# Fluorescence imaging of a potential diagnostic biomarker for breast cancer cells using a peptide-functionalized fluorogenic 2D material†

Wei-Tao Dou,<sup>‡a</sup> Li-Fang Liu,<sup>‡ab</sup> Jie Gao,<sup>ab</sup> Yi Zang,<sup>\*b</sup> Guo-Rong Chen,<sup>a</sup>  
Robert A. Field,<sup>id c</sup> Tony D. James,<sup>id d</sup> Jia Li<sup>\*b</sup> and Xiao-Peng He<sup>id \*a</sup>

**Protein C receptor (PROCR) is a recently discovered transmembrane biomarker for several tissue stem cells and is highly expressed in triple-negative breast cancer (TNBC) patient-derived xenografts. Herein, to enrich the toolbox for the biochemical evaluation of PROCR, we have developed a peptide-functionalized fluorogenic 2D material based on the self-assembly between a fluorescent peptide probe and thin-layer molybdenum disulfide. The material developed was suitable for the sensitive detection of PROCR recombinant protein in buffer solution and the fluorescence imaging of TNBC cells that express high levels of PROCR.**

Breast cancer (BC) is the leading cause of cancer-related deaths among women in the world.<sup>1,2</sup> BC is a highly heterogeneous disease<sup>3</sup> with different biological features and clinical behaviours,<sup>4,5</sup> which poses great challenges for the treatment of BC. Triple-negative breast cancer (TNBC) is the most aggressive form of BC, and it accounts for a much higher recurrence and metastasis rate due to the limited expression of progesterone receptor (PR), estrogen receptor (ER), and human epidermal growth factor receptor 2 (HER2).<sup>6</sup> TNBC accounts for 15–20% of all breast carcinomas.<sup>7</sup> Moreover, TNBC is not sensitive to existing hormone inhibitory drugs and hormone suppression methods.<sup>8</sup> Clinically, there is a lack of effective treatment to treat breast cancer at an early stage, to complement tumor removal, which runs the risk of metastasis of tumour cells, however. The currently applied clinical methods for BC diagnosis,

such as X-ray photography and immunohistochemistry (IHC),<sup>9</sup> may cause harmful side effects. Therefore, it is important to develop new diagnostic means for early-stage TNBC diagnosis.

Recent studies have shown that BC is initiated by mammary stem cells (MaSCs) or progenitor cell lesions.<sup>10</sup> Therefore, breast stem cells have become a research focus by oncologists. Recently, Zeng and colleagues discovered a new group of breast stem cells and showed that MaSCs specifically express protein C receptor (PROCR), which plays an important role in the initiation as well as epithelial-to-mesenchymal transition-driven metastasis of BC. Wang *et al.* reported that PROCR is differentially expressed in breast cancer cell lines but more prevalently in TNBC cells. Therefore, PROCR is important for the in-depth exploration of breast cancer development and tumorigenesis mechanisms, and would be potentially useful for the treatment of TNBC which lacks effective transmembrane biomarkers for targeted diagnosis and therapy.<sup>11</sup> PROCR is a Type I transmembrane glycoprotein,<sup>12</sup> which mediates cell signalling, promotes migration, invasion and angiogenesis of cancer cells, and inhibits cancer cell apoptosis.<sup>13</sup> In addition, PROCR is highly expressed in extremely invasive basal BC subtype cells.<sup>14</sup> On the basis of these pathological properties, Shipitsin and colleagues suggested PROCR as one of the most promising biomarkers for breast cancer.<sup>15</sup>

Two-dimensional (2D) nanomaterials (2D nanomaterials) have attracted significant research interest due to their highly diverse physical, chemical and optical properties. In recent years, with the in-depth exploration and application of graphene, a number of other 2D materials such as layered double hydroxides (LDHs), transition-metal dichalcogenides (TMDs) and transition metal oxides (TMOs) have been synthesized.<sup>16,17</sup> In particular 2D materials have been widely employed as the support onto which biomolecules can be modified in order to enhance biocompatibility for biomedical applications including drug delivery, *in vitro* and *in vivo* imaging and disease theranostics.<sup>18,19</sup> Among the 2D materials reported, 2D molybdenum disulfide (MoS<sub>2</sub>) has been extensively used by researchers because of its low cytotoxicity, good water dispersibility and high biocompatibility, as proven by *in vivo* studies.<sup>20</sup>

<sup>a</sup> Key Laboratory for Advanced Materials, Feringa Nobel Prize Scientist Joint Research Center, School of Chemistry and Molecular Engineering, East China University of Science and Technology, 130 Meilong Rd, Shanghai 200237, China. E-mail: xphe@ecust.edu.cn

<sup>b</sup> National Center for Drug Screening, State Key Laboratory of Drug Research, Shanghai Institute of Materia Medica, Chinese Academy of Sciences, 189 Guo Shoujing Rd, Shanghai 201203, P. R. China. E-mail: yzang@sim.ac.cn, jli@sim.ac.cn

<sup>c</sup> Department of Biological Chemistry, John Innes Centre, Norwich Research Park, Norwich NR4 7UH, UK

<sup>d</sup> Department of Chemistry, University of Bath, Bath, BA2 7AY, UK

† Electronic supplementary information (ESI) available: Additional figures and experimental section. See DOI: 10.1039/c9cc06399d

‡ These authors contributed equally.





Fig. 1 (a) Structure of peptide **TAMRA-AN33** as a fluorescent probe for PROCR; (b) illustration of the formation of the **TAMRA-AN33**-functionalized 2D MoS<sub>2</sub> composite; (c) targeted imaging of cells with high PROCR expression.

Here, to expand the chemical toolbox for the biochemical investigation of PROCR, we constructed a fluorogenic 2D material based on the self-assembly between a synthetic peptide ligand (Fig. 1a) that is labelled with a fluorophore and 2D MoS<sub>2</sub> (Fig. 1b). Using this composite, we established a fluorogenic assay for the sensitive detection of PROCR recombinant protein as well as the imaging of PROCR-expressed TNBC cells (Fig. 1c). Importantly, using this simple 2D material, we have demonstrated that PROCR could be a potential surface biomarker for the targeted diagnosis and therapy of TNBC.

A previously reported<sup>21</sup> peptide ligand (ANSFLEELRHSSLER-ECIEICDFEEAKEIFQN – AN33) known to bind PROCR was used (PDB: 1LQV). TAMRA (tetramethyl-rhodamine) was used as a fluorophore label to covalently couple with the peptide, producing the peptide probe **TAMRA-AN33**. Subsequently, self-assembly of the peptide probe with 2D MoS<sub>2</sub> synthesized by a known exfoliation method<sup>22</sup> was conducted in phosphate-buffered saline (PBS, 0.01 M, pH 7.4) as solvent to form the **TAMRA-AN33/MoS<sub>2</sub>** composite.

To study the morphology of the peptide-functionalized 2D material, we used high-resolution transmission electron microscopy (HRTEM). 2D MoS<sub>2</sub> alone was observed to be a thin layered nanosheet structure (Fig. 2a). After assembling with **TAMRA-AN33**, peptide aggregates were seen on the surface of the 2D MoS<sub>2</sub> nanosheet producing an entangled fibril architecture (Fig. 2b). The size distribution of the 2D MoS<sub>2</sub> and **TAMRA-AN33/MoS<sub>2</sub>** was measured by dynamic light scattering (DLS). The diameter of the 2D MoS<sub>2</sub> sheets ranged from 90 nm to 180 nm, and the average particle size was determined to be *ca.* 125 nm (Fig. 2c). After assembly with the peptide, the particle size increased to 110–250 nm with an average particle size of 152 nm (Fig. 2d). Subsequent element distribution mapping using energy dispersive X-ray spectrometry indicated a universal distribution of the peptide ligand on the surface of 2D MoS<sub>2</sub> (Fig. S1, ESI†). To measure the thickness increase of 2D MoS<sub>2</sub> after assembly with the peptide, atomic force microscopy (AFM) was used. In the representative AFM images of **TAMRA-AN33/MoS<sub>2</sub>**, we observed particle-like aggregates on the surface of 2D MoS<sub>2</sub>, resulting in a height increase of  $\sim 2$  nm with respect to 2D MoS<sub>2</sub> alone (Fig. S2,



Fig. 2 HRTEM images of (a) 2D MoS<sub>2</sub> (30  $\mu\text{g mL}^{-1}$ ) and (b) **TAMRA-AN33/MoS<sub>2</sub>** (5  $\mu\text{M}/30 \mu\text{g mL}^{-1}$ ). DLS of (c) 2D MoS<sub>2</sub> (30  $\mu\text{g mL}^{-1}$ ) and (d) **TAMRA-AN33/MoS<sub>2</sub>** (5  $\mu\text{M}/30 \mu\text{g mL}^{-1}$ ). (e) Raman spectra of 2D MoS<sub>2</sub> (30  $\mu\text{g mL}^{-1}$ ) and **TAMRA-AN33/MoS<sub>2</sub>** (5  $\mu\text{M}/30 \mu\text{g mL}^{-1}$ ). (f) Zeta potential of 2D MoS<sub>2</sub> (30  $\mu\text{g mL}^{-1}$ ) and **TAMRA-AN33/MoS<sub>2</sub>** (5  $\mu\text{M}/30 \mu\text{g mL}^{-1}$ ).

ESI†). These results suggest the attachment of **TAMRA-AN33** to the surface of the 2D MoS<sub>2</sub>.

To elaborate the driving force by which **TAMRA-AN33** and 2D MoS<sub>2</sub> self-assembles, we used Raman spectroscopy and zeta potentiometry to characterize the scattering signals and potential of the materials, respectively. Typical Raman peaks centred at 378  $\text{cm}^{-1}$  and 404  $\text{cm}^{-1}$ , which correspond to the in-plane vibration ( $E_{2g}^1$ ) of Mo and S atoms and the reverse interlaminar vibration of two S atoms ( $A_{1g}$ ), respectively, were observed for both 2D MoS<sub>2</sub> and the composite (Fig. 2e).<sup>23</sup> The ratio of  $E_{2g}^1/A_{1g}$  was used to characterize the change in vibration level and thickness of the MoS<sub>2</sub> sheets. In the presence of **TAMRA-AN33**, the  $E_{2g}^1/A_{1g}$  ratio of the 2D MoS<sub>2</sub> increased from 0.55 to 0.63, suggesting an increased degree of the in-plane Mo–S vibration and a decreased interlaminar vibration of the two S atoms. This implies that the coating of **TAMRA-AN33** to the surface of 2D MoS<sub>2</sub> increased the degree of conjugation and the thickness of the sheet. The zeta potential of 2D MoS<sub>2</sub> decreased from  $-8.6$  mV to  $-19.6$  mV (Fig. 2f), suggesting an electrostatic attraction between the peptide and the 2D material. In addition, the increase of the absolute potential value suggests an enhanced stability of **TAMRA-AN33/MoS<sub>2</sub>** in the aqueous phase with respect to 2D MoS<sub>2</sub>.<sup>24</sup>

2D MoS<sub>2</sub> features a wide spectral absorption band, which can absorb the photon energy of adjacent fluorophores (less than 10 nm), thus quenching the fluorescence emission. As a result, we tested the fluorescence quenching of **TAMRA-AN33**



with 2D MoS<sub>2</sub> using graphene oxide (GO) as a control. We determined that with the continuous addition of 2D MoS<sub>2</sub> (Fig. 3a) and GO (Fig. S3a, ESI†), the fluorescence of **TAMRA-AN33** decreased in a concentration-dependent manner (Fig. 3b and Fig. S3b, ESI† for 2D MoS<sub>2</sub> and GO, respectively). Subsequently, the addition of recombinant PROCR to a solution of **TAMRA-AN33**/MoS<sub>2</sub> (Fig. 3c) and **TAMRA-AN33**/GO (Fig. S3c, ESI†) led to a concentration-dependent recovery of the fluorescence (Fig. 3d and Fig. S3d, ESI† for 2D MoS<sub>2</sub> and GO, respectively). The limit of detection of **TAMRA-AN33**/MoS<sub>2</sub> (0.76 nM) for PROCR was determined to be lower than that of **TAMRA-AN33**/GO (1.26 nM) (Fig. S4, ESI†). These results suggest that the peptide probe could be removed from the surface of the 2D materials through binding to PROCR, leading to fluorescence recovery. This is in accordance with our previous observations.<sup>25</sup>

To confirm that the fluorescence enhancement originates from the association between **TAMRA-AN33** and PROCR, AN33 without being modified with TAMRA was used as a competing agent (Fig. S5, ESI†). We found that pre-incubation of bare AN33 with PROCR significantly reduced the fluorescence enhancement of **TAMRA-AN33**/MoS<sub>2</sub>, suggesting binding between the peptide ligand and the protein. To further test the binding selectivity of the material composite, we used a variety of other proteins, including soybean agglutinin (SBA), concanavalin A (Con A), pepsin (PEP), bovine serum albumin (BSA), wheat germ agglutinin (WGA) and peanut agglutinin (PNA) (Fig. S6, ESI†). With the same protein concentration, we observed that the fluorescence intensity of **TAMRA-AN33**/MoS<sub>2</sub> with PROCR is significantly higher than that with the other proteins, implying that **TAMRA-AN33**/MoS<sub>2</sub> has good selectivity for PROCR detection. These results provide the basis for developing a new *in vitro* fluorescence assay to sensitively detect, as well as screen new binding agents for, PROCR.

Next, we tested the capacity of the material composite for the fluorescence imaging of TNBC that highly expresses PROCR

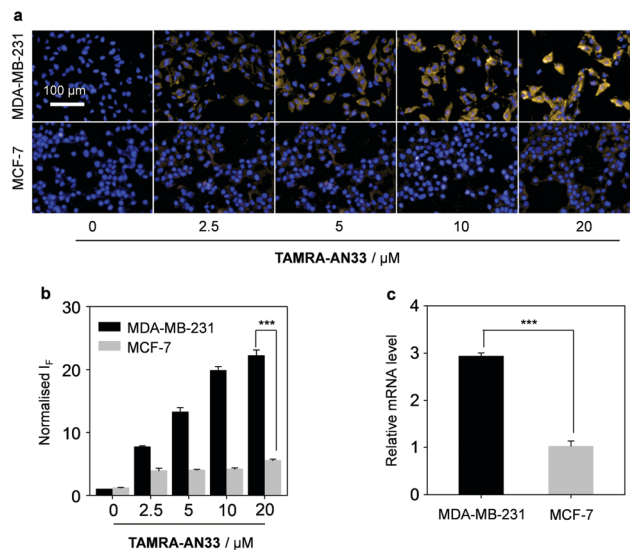


Fig. 4 (a) Fluorescence imaging and (b) quantification ( $***P < 0.001$ ) of MDA-MB-231 and MCF-7 cell lines incubated with increasing **TAMRA-AN33** (0, 2.5, 5, 10 and 20  $\mu\text{M}$ ); (c) measuring the relative mRNA level of PROCR in MDA-MB-231 and MCF-7 cells by real-time quantitative polymerase chain reaction ( $***P < 0.001$ ). Scale bar = 100  $\mu\text{m}$ ; the excitation and emission channels used are 460–500 nm and 560–630 nm, respectively. The cell nuclei were stained by Hoechst 33342.

(Fig. 4). A human TNBC cell line (MDA-MB-231) known to highly express the protein<sup>26</sup> and another breast cancer cell line (MCF-7) with a lower PROCR expression level<sup>27</sup> were used. We first determined that with an increasing concentration of **TAMRA-AN33**, the fluorescence produced in MDA-MB-231 cells was gradually enhanced (Fig. 4a and b). Whereas, the fluorescence in MCF-7 cells did not significantly change. This agrees with the PROCR expression level of the two cells, as measured by real-time quantitative polymerase chain reaction (RT qPCR) (Fig. 4c).

Then, we incubated **TAMRA-AN33**/MoS<sub>2</sub> with cells using the peptide probe alone as a control. While no obvious fluorescence change was seen for MCF-7, a fluorescence enhancement was observed for MDA-MB-231 when the concentration of 2D MoS<sub>2</sub> was increased from 0 to 20  $\mu\text{g mL}^{-1}$  (Fig. 5a and b). However, a further increase of the material concentration led to a gradually suppressed fluorescence. This suggests that the presence of 2D MoS<sub>2</sub> could enhance the binding of the peptide probe with membrane-bound PROCR probably through a clustering effect, as observed in our previous research.<sup>28</sup> A subsequent cell proliferation assay indicated that the peptide probe was not toxic to MDA-MB-231 cells (Fig. S7, ESI†), suggesting its good compatibility for in-depth pharmacological investigations. To further demonstrate the targeting ability of the composite developed, we used a normal cell line (human hepatocyte – L02) for comparison (Fig. S8, ESI†). We observed that the imaging signature of the composite for the breast cancer cells was significantly stronger than that of the hepatocyte. This also agrees with their PROCR expression level measured by RT qPCR (Fig. S9, ESI†).

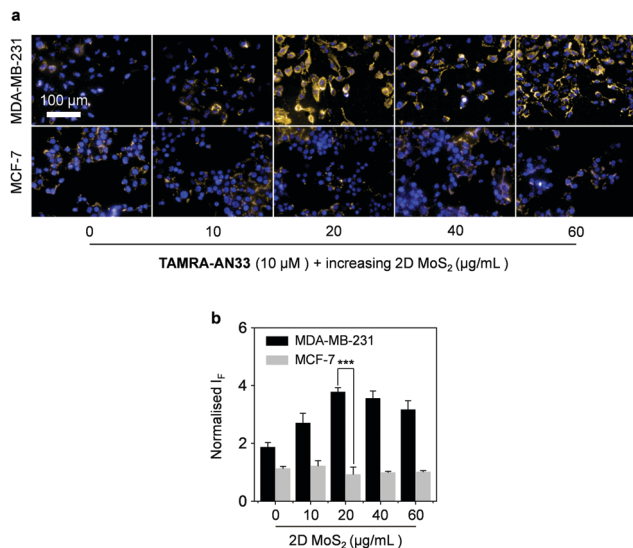
In summary, we have developed a fluorogenic 2D **TAMRA-AN33**/MoS<sub>2</sub> composite through the self-assembly of a fluorophore-labelled



Fig. 3 (a) Fluorescence spectra and (b) titration of **TAMRA-AN33** (0.25  $\mu\text{M}$ ) with increasing 2D MoS<sub>2</sub> (0–30  $\mu\text{g mL}^{-1}$ ); (c) fluorescent spectra and (d) titration of **TAMRA-AN33** (0.25  $\mu\text{M}$ ) complexed with 2D MoS<sub>2</sub> (30  $\mu\text{g mL}^{-1}$ ) with increasing PROCR protein (0–110 nM); the solvent used is PBS (0.01 M, pH 7.40). Excitation wavelength = 530 nm.







**Fig. 5** (a) Fluorescence imaging and (b) quantification (\*\* $P < 0.001$ ) of MDA-MB-231 and MCF-7 incubated with **TAMRA-AN33** (10  $\mu\text{M}$ ) with increasing 2D MoS<sub>2</sub> (0, 10, 20, 40, 60  $\mu\text{g mL}^{-1}$ ). Scale bar = 100  $\mu\text{m}$ ; the excitation and emission channels used are 460–500 nm and 560–630 nm, respectively. The cell nuclei were stained by Hoechst 33342.

PROCR ligand and 2D MoS<sub>2</sub>. The resulting composite offers scope to establish a concise fluorogenic assay for *in vitro* sensing and screening of binding agents of PROCR, as well as for the imaging of TNBC cells that highly express the protein biomarker. Considering the excellent therapeutic effect of 2D materials as demonstrated by numerous investigations,<sup>29</sup> this composite could be extended to the fluorescence imaging and therapy of TNBC *in vivo*.

Prof. Yi Zeng is warmly thanked for her helpful discussion. This research was supported by the Natural Science Foundation of China (no. 21788102, 91853201, 21722801 and 21776078), the Shanghai Municipal Science and Technology Major Project (No. 2018SHZDZX03), the Shanghai Science and Technology Committee (No. 19410712600), and the National Postdoctoral Program for Innovative Talents (BX201901115). T. D. J. thanks the Royal Society for a Wolfson Research Merit Award. All cells were obtained from ATCC.

## Conflicts of interest

There are no conflicts to declare.

## Notes and references

- Q. Yan, Z. Xiaorong, Z. Zhang, W. Bing, Y. Feng and B. Hong, *Pathol., Res. Pract.*, 2017, **213**, 1173.
- R. Abdollahzadeh, A. Daraei, Y. Mansoori, M. Sepahvand, M. M. Amoli and J. Tavakkoly-Bazzaz, *J. Cell. Physiol.*, 2019, **234**, 10080.
- B. Weigelt, F. C. Geyer and J. S. Reis-Filho, *Mol. Oncol.*, 2010, **4**, 192.

- A. Bahrami, M. Khazaei, S. Shahidsales, S. M. Hassanian, M. Hasanazadeh, M. Maftouh, G. A. Ferns and A. Avan, *J. Cell. Biochem.*, 2018, **1192**, 213.
- S. Alimirzaie, M. Bagherzadeh and M. R. Akbari, *Clin. Genet.*, 2019, **95**, 643.
- C. Belli, B. A. Duso, E. Ferraro and G. Curigliano, *Breast*, 2019, **45**, 15.
- A. G. Waks and E. P. Winer, *J. Am. Med. Assoc.*, 2019, **321**, 288.
- A. C. Garrido-Castro, N. U. Lin and K. Polyak, *Cancer Discovery*, 2019, **9**, 176.
- I. A. Nemeir, J. Saab, W. Hleihel, A. Errachid, N. Jafferzic-Renault and N. Zine, *Sensors*, 2019, **19**, 2373.
- P. Bonetti, M. Climent, F. Panebianco, C. Tordonato, A. Santoro, M. J. Marzi, P. G. Pelicci, A. Ventura and F. Nicassio, *Oncogene*, 2019, **38**, 360.
- B. Lloyd-Lewis, O. B. Harris, C. J. Watson and F. M. Davis, *Trends Cell Biol.*, 2017, **27**, 556.
- D. Wang, C. Cai, X. Dong, Q. Yu, X.-O. Zang, L. Yang and Y. Zeng, *Nature*, 2015, **517**, 81.
- K. Fukudome, X. Ye, N. Tsuneyoshi, O. Tokunaga, K. Sugawara, H. Mizokami and M. Kimoto, *J. Exp. Med.*, 1998, **187**, 1029.
- I. Antón, E. Molina, D. Luis-Ravelo, C. Zanduetta, K. Valencia, C. Ormazabal, S. Martínez-Canarias, N. Perurena, M. J. Pajares, J. Aqorreta, L. M. Montuenga, V. Segura, I. I. Wistuba, J. D. L. Rivas, J. Hermida and F. Lecanda, *Am. J. Respir. Crit. Care Med.*, 2012, **186**, 96.
- S. Y. Park, H. E. Lee, H. Li, M. Shipitsin, R. Gelman and K. Polyak, *Clin. Cancer Res.*, 2010, **16**, 876.
- M. Shipitsin, L. L. Campbell, P. Argani, S. Weremowicz, N. Bloushtain-Qimron, J. Yao, T. Nikolskaya, T. Serebryiskaya, R. Beroukhim, M. Hu, M. K. Halushka, S. Sukumar, L. M. Parker, K. S. Anderson, L. N. Harris, J. E. Garber, A. L. Richardson, S. J. Schnitt, Y. Nikolsky, R. S. Gelman and K. Polyak, *Cancer Cell*, 2007, **11**, 259.
- C. Tan, X. Cao, X.-J. Wu, Q. He, J. Yang, X. Zhang, J. Chen, W. Zhao, S. Han, G.-H. Nam, M. Sindoro and H. Zhang, *Chem. Rev.*, 2017, **117**, 6225.
- G. R. Bhimanapati, Z. Lin, V. Meunier, Y. Jung, J. Cha, S. Das, D. Xiao, Y. Son, M. S. Strano, V. R. Cooper, L. Liang, S. G. Louie, E. Ringe, W. Zhou, S. S. Kim, R. R. Naik, B. G. Sumpter, H. Terrones, F. Xia, Y. Wang, J. Zhu, D. Akinwande, N. Alem, J. A. Schuller, R. E. Schaak, M. Terrones and J. A. Robinson, *ACS Nano*, 2015, **9**, 11509.
- A. Gnach, T. Lipinski, A. Bednarkiewicz, J. Rybka and J. A. Capobianco, *Chem. Soc. Rev.*, 2015, **44**, 1561.
- T. Liu and Z. Liu, *Adv. Healthcare Mater.*, 2018, **7**, 1701158.
- J. Hao, G. Song, T. Liu, X. Yi, K. Yang, L. Cheng and Z. Liu, *Adv. Sci.*, 2017, **4**, 1600160.
- V. Oganessian, N. Oganessian, S. Terzyan, D. Qu, Z. Dauter, N. L. Esmon and C. T. Esmon, *J. Biol. Chem.*, 2002, **277**, 24851.
- J. N. Coleman, M. Lotya, A. O'Neill, S. D. Bergin, P. J. King, K. Young, A. Gaucher, S. De, R. J. Smith, I. V. Shvets, S. K. Arora, G. Stanton, H.-Y. Kim, K. Lee, G. T. Kim, G. S. Duesberg, T. Hallam, J. J. Boland, J. J. Wang, J. F. Donegan, J. C. Grunlan, G. Moriarty, K. Theuwissen, D. W. McComb, P. D. Nellist and V. Nicolosi, *Science*, 2011, **331**, 568.
- F. Bonaccorso, P. H. Tan and A. C. Ferrari, *ACS Nano*, 2013, **7**, 1838.
- D.-K. Ji, Y. Zhang, Y. Zang, J. Li, G.-R. Chen, X.-P. He and H. Tian, *Adv. Mater.*, 2016, **28**, 9356.
- Y.-H. Ma, W.-T. Dou, Y.-F. Pan, L.-W. Dong, Y.-X. Tan, X.-P. He, H. Tian and H.-Y. Wang, *Adv. Mater.*, 2017, **29**, 1604253.
- D. Wang, C. Liu, J. Wang, Y. Jia, X. Hu, H. Jiang, Z.-M. Shao and Y. A. Zeng, *J. Biol. Chem.*, 2018, **293**, 1413.
- J. Eisermann, A. Kerth and D. Hinderberger, *RSC Adv.*, 2019, **9**, 18627.
- W.-T. Dou, Y. Kong, X.-P. He, G.-R. Chen, Y. Zang, J. Li and H. Tian, *ACS Appl. Mater. Interfaces*, 2017, **9**, 14709.

