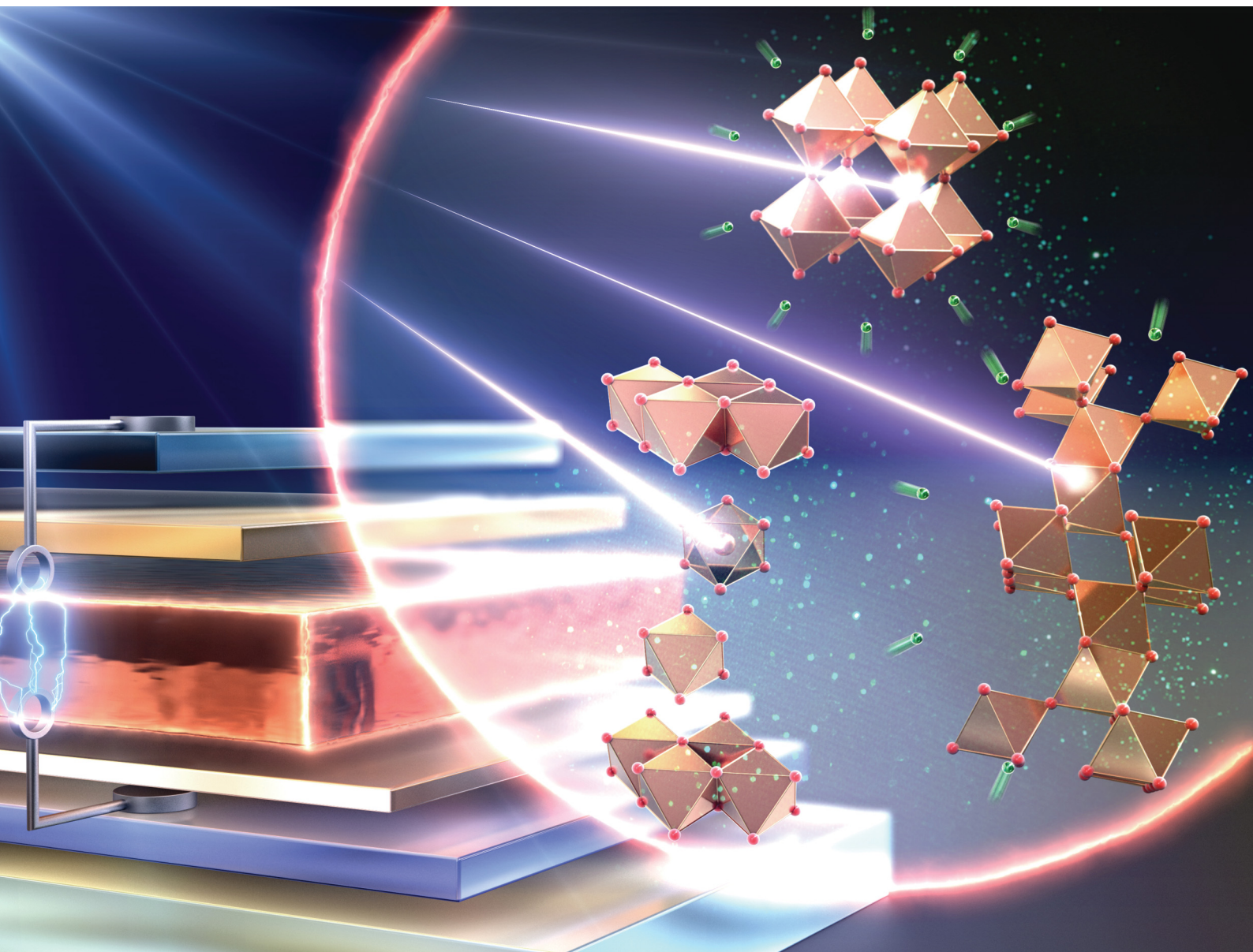


Energy & Environmental Science

Volume 14
Number 12
December 2021
Pages 6059–6680

rsc.li/ees



ISSN 1754-5706

COMMUNICATION

Samuel D. Stranks, Keshav M. Dani *et al.*
Unraveling the varied nature and roles of defects in hybrid
halide perovskites with time-resolved photoemission
electron microscopy

Cite this: *Energy Environ. Sci.*, 2021, 14, 6320Received 4th July 2021,
Accepted 1st September 2021

DOI: 10.1039/d1ee02055b

rsc.li/ees

Unraveling the varied nature and roles of defects in hybrid halide perovskites with time-resolved photoemission electron microscopy†

Sofiia Kosar,^a Andrew J. Winchester,^a Tiarnan A. S. Doherty,^b Stuart Macpherson,^b Christopher E. Petoukhoff,^a Kyle Frohna,^b Miguel Anaya,^{b,c} Nicholas S. Chan,^a Julien Madéo,^a Michael K. L. Man,^a Samuel D. Stranks^{b,c} and Keshav M. Dani^a

With rapidly growing photoconversion efficiencies, hybrid perovskite solar cells have emerged as promising contenders for next generation, low-cost photovoltaic technologies. Yet, the presence of nanoscale defect clusters, that form during the fabrication process, remains critical to overall device operation, including efficiency and long-term stability. To successfully deploy hybrid perovskites, we must understand the nature of the different types of defects, assess their potentially varied roles in device performance, and understand how they respond to passivation strategies. Here, by correlating photoemission and synchrotron-based scanning probe X-ray microscopies, we unveil three different types of defect clusters in state-of-the-art triple cation mixed halide perovskite thin films. Incorporating ultrafast time-resolution into our photoemission measurements, we show that defect clusters originating at grain boundaries are the most detrimental for photocarrier trapping, while lead iodide defect clusters are relatively benign. Hexagonal polytype defect clusters are only mildly detrimental individually, but can have a significant impact overall if abundant in occurrence. We also show that passivating defects with oxygen in the presence of light, a previously used approach to improve efficiency, has a varied impact on the different types of defects. Even with just mild oxygen treatment, the grain boundary defects are completely healed, while the lead iodide defects begin to show signs of chemical alteration. Our findings highlight the need for multi-pronged strategies tailored to selectively address the detrimental impact of the different defect types in hybrid perovskite solar cells.

Broader context

Hybrid halide perovskites have emerged as one of the most promising photovoltaic materials of the past decade. However, the presence of defects in hybrid perovskite thin films has been detrimental to material properties, and has been a critical reason preventing devices from reaching their full potential. In this work, the authors have directly imaged the nanoscale defect clusters, and uncovered the presence of multiple types of defects in state-of-the-art triple cation mixed halide perovskite thin films. Depending on their nature, these defect clusters play a surprisingly varied roles in charge carrier trapping – from highly detrimental to relatively benign. They also show a varied response to passivation strategies. The presence of multiple defect types, with varied roles in device performance and varied responses to passivation strategies, highlights the need to develop targeted approaches that address each type of defect and their detrimental impact.

An inherent downside to low-cost solution processed hybrid perovskite photovoltaic thin films is the generation of a variety of defects that impact device operation. These defects can include atomic vacancies and interstitials,^{1,2} unreacted precipitates from the solution processing steps,^{3,4} as well as alternative crystalline phases,^{5,6} which limit device performance.^{7–10} Designing successful strategies to mitigate these defects strongly depends on our fundamental understanding of their identity and role in performance. This requires a cumulative approach that visualizes defects with high spatial resolution, as well as accesses their exact roles in the operation of perovskite photovoltaic devices. Recently, we used photoemission electron microscopy (PEEM) and scanning electron analytical techniques to visualize nanoscale defect clusters and obtain some understanding relating to the structure and composition of the surrounding grains.⁸ Further, time-resolved PEEM (TR-PEEM) techniques shed light on the general role of defects in the ultrafast charge carrier trapping process. Correlating local defect locations with nanoscale changes in structure upon light exposure has also revealed their role in long-term stability.¹⁰ However, considering the variety of defects that can occur, the

^a Femtosecond Spectroscopy Unit, Okinawa Institute of Science and Technology Graduate University, Onna, Okinawa, 904 0495, Japan. E-mail: kmdani@oist.jp

^b Cavendish Laboratory, University of Cambridge, JJ Thomson Avenue, Cambridge CB3 0HE, UK. E-mail: sds65@cam.ac.uk

^c Department of Chemical Engineering and Biotechnology, University of Cambridge, Philippa Fawcett Drive, Cambridge CB3 0AS, UK

† Electronic supplementary information (ESI) available. See DOI: 10.1039/d1ee02055b



impact of specific types of defects on film performance remains largely a mystery. Moreover, while general strategies have been pursued thus far to address unwanted defects, uncovering the specific impact of these strategies on the different defect types is key to designing more-effective, targeted approaches.

Here, using time- and spectrally-resolved PEEM on state-of-the-art triple cation mixed halide perovskite films, we observe three different types of nanoscale surface defect clusters, and find a surprisingly varied effect on device efficiency and response to controlled treatment with light and oxygen. Defect clusters appearing exclusively at grain boundaries are small, on the order of a few tens of nanometres in size. *Via* diffusion assisted hole-trapping, they impact the performance of a region nearly ten times their size. We also observe lead iodide defect clusters that are relatively benign to device performance as they do not participate in the trapping of carriers generated in the perovskite films. Lastly, polytype defect clusters can be as large as few hundreds of nanometres, and exhibit altered crystalline phases to the pristine perovskite. Located nearly an electron-volt below the Fermi level, they trap holes in a region about twice their size, indicating a reduced zone of impact. We show that just mild doses of visible light and dry air completely eliminate the grain boundary defects while polytypes remain largely unchanged. The sites of lead iodide defect clusters show signs of chemical alteration on exposure, which could be an important factor in long-term stability of devices.¹⁰ The presence of multiple defect types, and their varied roles in device efficiency

and stability, suggests the need for targeted approaches to improve the performance of perovskite devices.

Results and discussion

For our study, we prepared triple cation mixed halide perovskite thin films with chemical composition of $\text{FA}_{0.78}\text{MA}_{0.17}\text{Cs}_{0.05}\text{-Pb}(\text{I}_{0.83}\text{Br}_{0.17})_3$ by spin-coating the precursor solution onto glass substrates coated with indium tin oxide (see Experimental methods for details of fabrication process). Our samples showed emission peaks at ~ 772 nm, thus yielding a band gap of ~ 1.6 eV (Fig. S1, ESI[†]). We also deposited fiducial gold markers (Fig. S2, ESI[†]) on the sample surface to help accurately superimpose images taken with different techniques^{8,11} and to establish the Fermi level of samples in our photoemission experiments. We then transferred our samples from the N_2 -filled glovebox to our PEEM utilizing a hermetically sealed vacuum suitcase to avoid exposure to ambient air. We took care to mitigate the ultraviolet light exposure conditions to ensure no sample damage was induced during PEEM measurements (see Methods section of our previous work⁸). In this study, we measured multiple samples and observed qualitatively similar results. As previously reported,⁸ a PEEM image acquired when probing the surface of perovskite samples with 4.65 eV probe photons (Fig. 1a, see Experimental methods for imaging details) showed nanoscale clusters of occupied surface defect states (Fig. 1b, green contrast). Then, utilizing

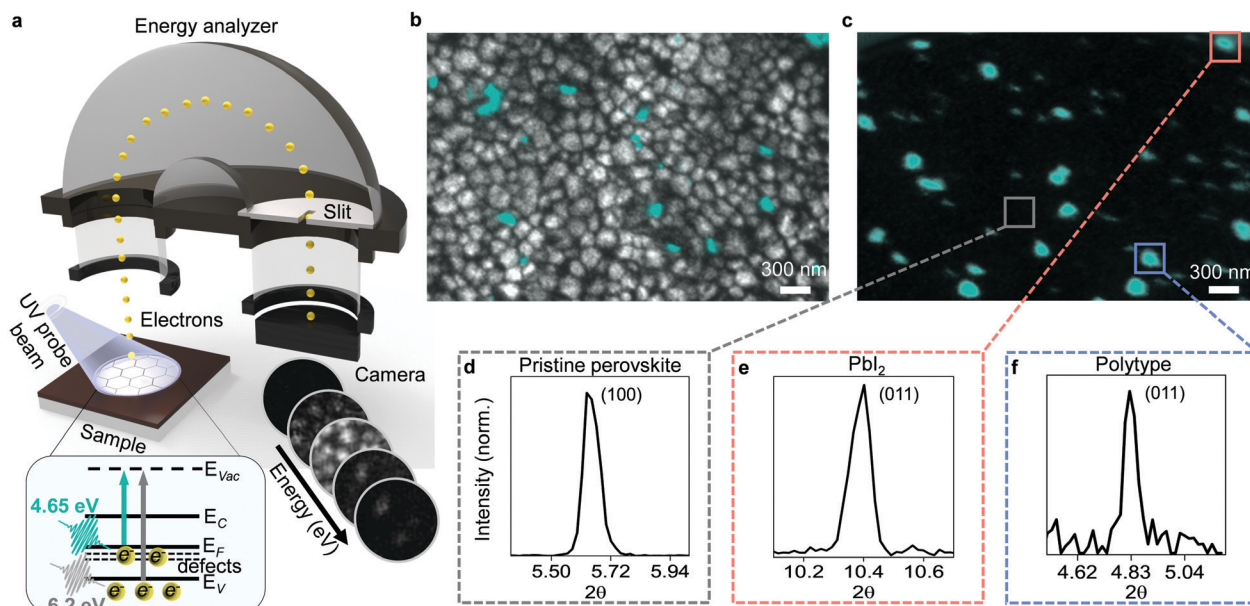


Fig. 1 Presence of multiple types of defects on nanoscale. (a) Schematic of PEEM experimental setup: UV probe pulses cause photoemission of electrons from sample surface; electrons are then accelerated through hemispherical energy analyzer, dispersed in energy, and imaged on CCD camera for each energy. Inset shows energy level diagram of hybrid perovskite: arrows indicate transitions from defect states (E_d) below the Fermi level (E_F), valence band states (E_V), conduction band states (E_C) to vacuum states (E_{Vac}) upon probing of sample with photon energies of 4.65 eV (green arrow) and 6.2 eV (grey arrow). (b) Overlaid PEEM image of surface morphology obtained by illuminating the sample with 6.2 eV photons (grey contrast) and image of defect clusters acquired with 4.65 eV photons (green contrast). (c) PEEM image taken with 4.65 eV probe photons, overlaid with colored boxes showing nXRD regions of interest. (d) Local diffraction pattern extracted from the pristine region marked grey in (c) showing the (100) peak of a cubic perovskite. (e) Local diffraction pattern extracted from the defect cluster marked with a red box in (c) showing the (011) peak of PbI_2 . (f) Local diffraction pattern extracted from the defect cluster marked with a blue box in (c) showing the (011) peak of a 6H hexagonal perovskite polytype.



6.2 eV probe photons, we measured the onset of the valence band and thereby imaged the surface morphology exhibiting the typical grain structure (Fig. 1b, grey contrast, see Experimental methods for imaging details). By overlaying the two images, we obtained a direct visual of the location of the defect clusters relative to the surface morphology (Fig. 1b). We immediately saw hints of the presence of multiple types of defects. Smaller defect clusters of few tens of nanometres were located predominantly at the grain boundaries, while larger clusters corresponded to sub-grain features or even occupied entire grains.

To distinguish these defect clusters, we correlated synchrotron-based nano X-ray diffraction (nXRD) with PEEM measurements on the same region of the sample using gold fiducial markers for careful position reference (see Fig. S3, ESI† for details). The spatially averaged nXRD pattern extracted from the PEEM mapped region (Fig. 1c) can be indexed to a cubic perovskite structure with a lattice parameter of 6.3 Å, with trace amounts of PbI_2 also present but no other phase impurity peaks visible in the averaged pattern (Fig. S4, ESI†). Extracting local diffraction patterns from pristine regions away from the defect clusters revealed cubic perovskite structure (Fig. 1d). However, local diffraction patterns extracted from the larger PEEM defect clusters showed that some of these sites corresponded to PbI_2 (Fig. 1e). Inclusions of PbI_2 are known to form due to excess unreacted PbI_2 from the precursor solution.¹² Other large PEEM defect clusters exhibited the diffraction pattern of a hexagonal perovskite polytype (Fig. 1f). Hexagonal polytypes are intermediate products that form during crystallization of the perovskite thin film from precursor solution^{13,14} and are susceptible to the formation of defects.¹⁵ The grain boundary defects could not be unambiguously identified in nXRD due to their small size below the resolution of the nXRD measurements (~ 100 nm) and possibly disordered nature. Accessing the structural information at these sites would likely require utilization of techniques approaching atomic resolution.

To further distinguish these large defect clusters, as well as the small grain boundary defects, we used spectroscopic PEEM to obtain a nanoscale map of the photoemission spectrum as well as the local work function (see Experimental methods). We also utilized scanning electron (SEM) and atomic force (AFM) microscopies to aid in the interpretation of our results. Photoemission spectra from the small grain boundary defect clusters (Fig. 2a) exhibited a low mid-gap defect density (Fig. 2b) that was located closer to the valence band in energy (Fig. 2c and Fig. S5, ESI†). Given their size (approaching limits of our spatial resolution) and preexisting variations in work function going from the pristine film towards the grain boundaries, we were not able to observe obvious work function changes (Fig. 2d) at sites of grain boundary defect clusters (Fig. 2e and f). Photoemission spectra from PbI_2 defect clusters (Fig. 2a) exhibited a larger mid-gap defect density (Fig. 2b) and were located closer to the Fermi level in energy (Fig. 2c). In our work function maps, the PbI_2 defect clusters showed only a small increase in work function (by ~ 40 meV) compared to surrounding regions (Fig. 2d and Fig. S5, ESI†). Additionally, AFM mapping revealed that these defective PbI_2 inclusions

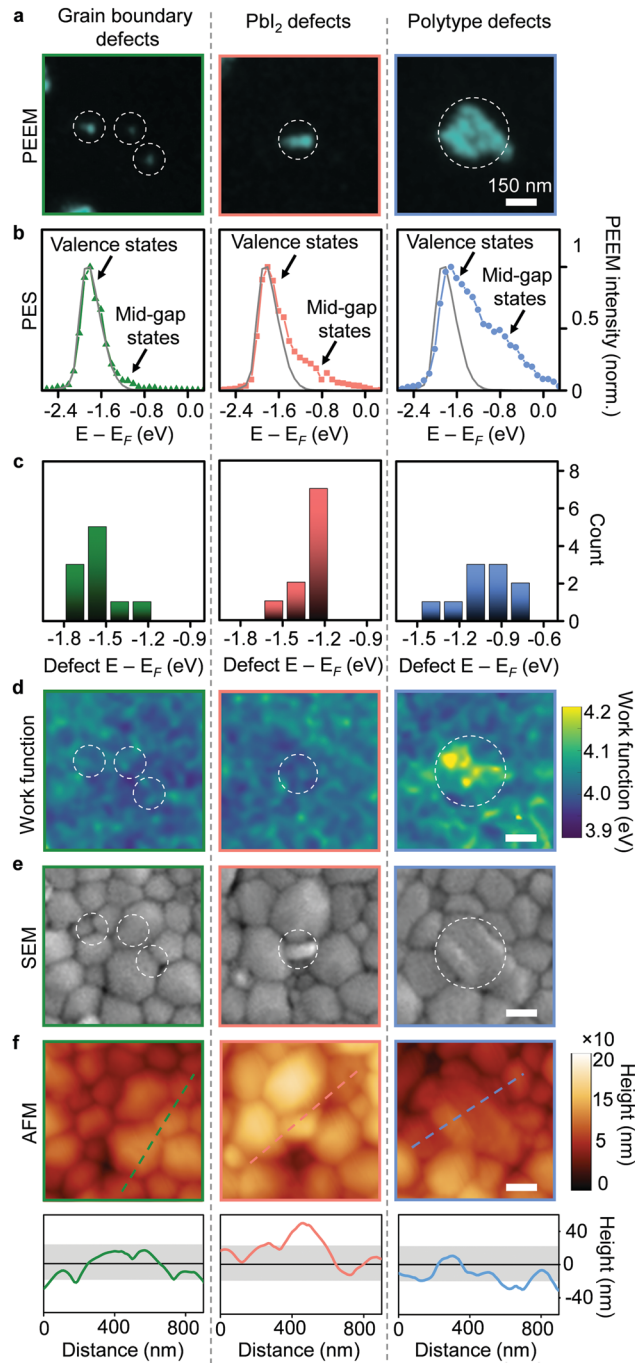


Fig. 2 Nature of multiple defect types. (a) High resolution PEEM images for three types of selected defect clusters, as labelled. (b) Representative photoelectron spectra for three types of defect clusters exhibiting both contributions from valence and mid-gap states. Grey line shows signal from a representative pristine region with main contribution from valence states. (c) Estimated peak energies of the mid-gap defect states for the three types of defects plotted based on fitting of photoemission spectra (Fig. S5, ESI†). (d) Work function maps for the same regions as (a). (e) SEM images for same regions as (a and d). (f) AFM images for the same regions as (a, d and e) with line profiles through the defect clusters indicating the raised height only for the PbI_2 defect clusters. Solid black line indicates mean height for the sample, with grey shaded area denoting the root-mean-square bounds.



were elevated in height above the perovskite grains (Fig. 2f). These can also be seen as bright high-contrast features in an SEM image (Fig. 2e).^{4,16,17} Photoemission spectra from the polytype defect clusters (Fig. 2a) showed a defect density in the mid-gap region centered ~ 1 eV below the Fermi level (Fig. 2b, c and Fig. S5, ESI[†]). The defective polytype grains (Fig. 2e and f), also showed a clear increase in work function (~ 80 meV) over surrounding regions (Fig. 2d and Fig. S6, ESI[†]), as expected for polytypes.¹⁸

The presence of multiple types of defects immediately suggests that tailored approaches may be necessary to passivate them. However, any meaningful strategy first requires knowledge about the specific role played by each defect type in device performance. For this, we turn to time-resolved photoemission electron microscopy,^{8,19–24} whereby changes in PEEM intensity allow us to understand their role in non-radiative recombination.⁸ Accordingly, in the PEEM, we photoexcited carriers just at the band edge of the pristine perovskite material in our samples with near-infrared pump pulses (Fig. 3a), and imaged the change in photoemission from the mid-gap defect states with time-delayed 4.65 eV probe pulses (Fig. 3a, inset). Such images allowed us to

analyze the role in charge carrier trapping for each defect cluster. For the pristine areas without defects, we did not observe changes in photoemission intensity (Fig. 3b and c), thus indicating the absence of trapping. Surprisingly, the three different defect types showed strikingly different behavior (Fig. 3b and Fig. S7, ESI[†]). For the PbI_2 defects, we did not observe substantial changes in photoemission intensity after photoexcitation into perovskite (Fig. 3b and c), indicating that these defects were relatively benign from the perspective of trapping charges generated in the pristine perovskite material. We expect that such processes could be inhibited in the PbI_2 defects due to the morphological height and/or energetic barrier with the surrounding perovskite grains. Nonetheless, we note that one does observe localized photoluminescence losses at the PbI_2 defect clusters, due to the presence of non-perovskite material (Fig. 3d).

In contrast to the PbI_2 defect clusters, both the grain boundary and polytype defect clusters participated in carrier trapping, as seen by a decrease in photoemission intensity at the corresponding sites after photoexcitation (Fig. 3b). However, there were important differences between the two. Grain boundary defect clusters exhibited a large reduction in the

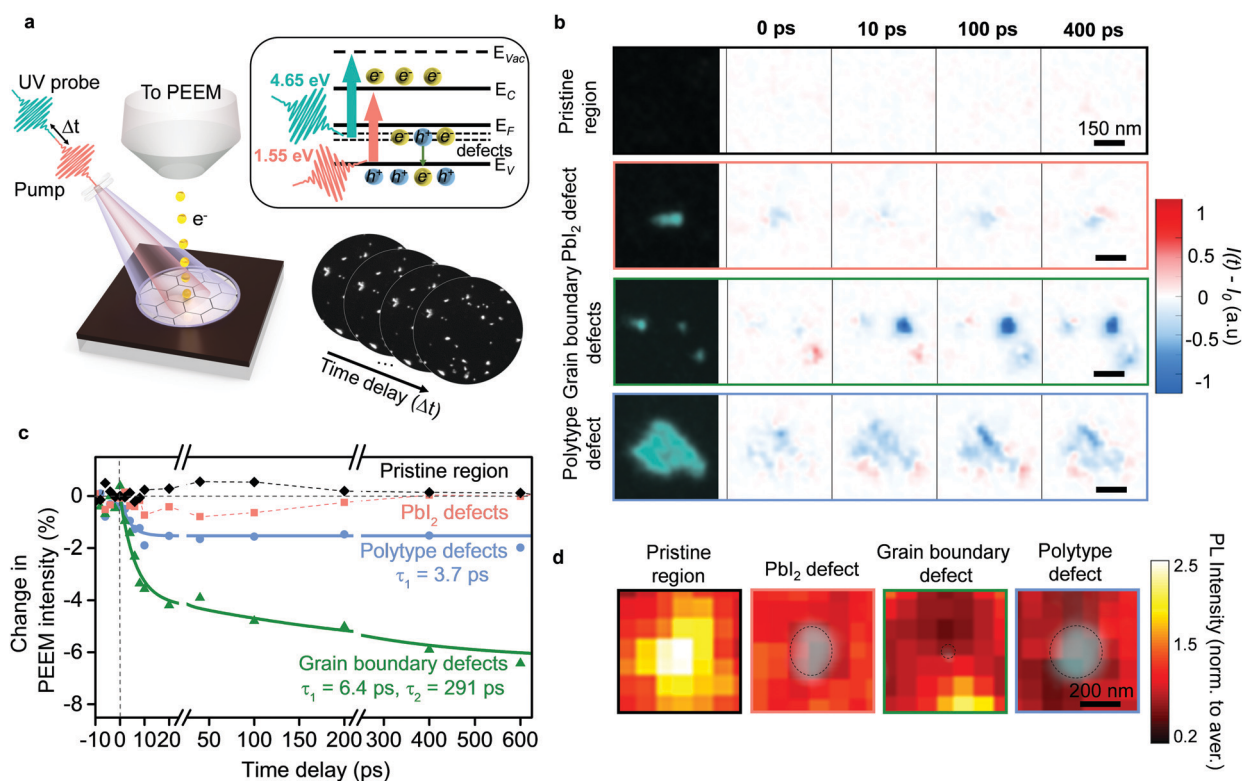


Fig. 3 Role of different types of defect clusters in performance losses. (a) Schematic of TR-PEEM experiment: sample is photoexcited with a pump pulse and probed with a time-delayed UV pulse. Photoemission signal is recorded as a sequence of images. Inset shows energy level diagram for perovskite sample: red arrow shows transition from valence band (E_V) to conduction band (E_C) upon photoexciting sample with 1.55 eV pump photons; green arrow shows transitions from mid-gap defect levels (*defects*) below the Fermi level (E_F) to vacuum levels (E_{vac}) upon probing the sample with 4.65 eV photons in PEEM. (b) Static PEEM images (left column) of a pristine region with no defects followed by regions with the three types of defect clusters, as labelled. Remaining columns denote the TR-PEEM intensity changes as $(I(t) - I_0)/I_0$ in those regions for four different pump-probe delays: 0 ps, 10 ps, 100 ps and 400 ps. (c) TR-PEEM traces, *i.e.* percentage change in PEEM intensity after photoexcitation $(I(t) - I_0)/I_0 \times 100$ plotted versus pump-probe time-delay for the pristine region and for the three types of defect clusters. Solid lines represent exponential decay fits. (d) Photoluminescence maps overlaid with PEEM images (green contrast) for a pristine region, and regions exhibiting the three different types of defect clusters. PEEM intensity here plotted on logarithmic scale.



TR-PEEM intensity after photoexcitation indicating a significant cross-section for photo-hole capture.⁸ We used double exponential decays to characterize their dynamics (Fig. 3c), and revealed time constants of $\tau_1 \sim 6$ ps and $\tau_2 \sim 290$ ps, suggesting a local, fast trapping process, followed by a slower diffusion assisted trapping process – in good agreement with previous reports.⁸ Photoluminescence maps around the grain boundary defect clusters showed the impact of this diffusion assisted trapping – the photoluminescence intensity was depleted over an area nearly ten times larger than the defect cluster size (Fig. 3d). In contrast, polytype defect clusters showed a much smaller TR-PEEM response (Fig. 3b and c) with only a fast-exponential decay ($\tau_1 \sim 3.7$ ps) observable within our measurement window. This indicates that diffusion-assisted trapping processes, if present, are weaker and slower. Consistent with this, local photoluminescence maps around the polytype defect clusters showed losses that extended only about twice the size of the polytype defect clusters (Fig. 3d). Fig. S8 (ESI[†]) shows additional regions with photoluminescence maps around defect clusters of each type that show the same qualitative behavior. We note that in samples that show a large abundance of polytype phases, despite the individual defect clusters being less detrimental than grain boundary types, they can have a comparable or larger impact on the overall film performance (Fig. S7, ESI[†]).

Over the past few years, to mitigate their detrimental impact, passivation strategies have been developed to address defects in general. Yet, the presence of different types of defects and

their varied roles in photocarrier trapping suggests that it is important to consider how each defect type may respond to a passivation strategy. To understand this, we employed an approach previously used to enhance optoelectronic properties of perovskite thin films – treatment with simple small molecules, such as oxygen in the presence of light.^{25–29} To differentiate the response of the different types of defects, we introduced only small, controlled doses of dry air and visible light (1 mbar dry air pressure and less than 1 sun illumination for 1 hour), which have been sufficient to begin showing signs of improved photoluminescence.^{27,28} The initial TR-PEEM dynamics before the treatment, show pronounced hole trapping signal for the grain boundary defect clusters (Fig. 4a and b). Strikingly, after the treatment with even small doses of dry air under illumination, we observed complete removal of the most detrimental grain boundary defect clusters as seen from TR-PEEM measurements (Fig. 4a); no evidence of the previously seen photo-hole trapping at their sites remained (Fig. 4b), as compared to the unexposed case. In contrast, defect densities (Fig. S9, ESI[†]) and trapping by polytype and PbI_2 defect clusters were largely unchanged compared to the unexposed sample, as seen from the TR-PEEM measurements (Fig. 4c, d and Fig. S10, ESI[†]). Interestingly, for PbI_2 defect clusters, we detected changes in work function, suggesting chemical alterations at these sites (Fig. 4d and Fig. S9, ESI[†]). These alterations are likely initial indicators of processes that occur with higher dosages of oxygen.¹⁰

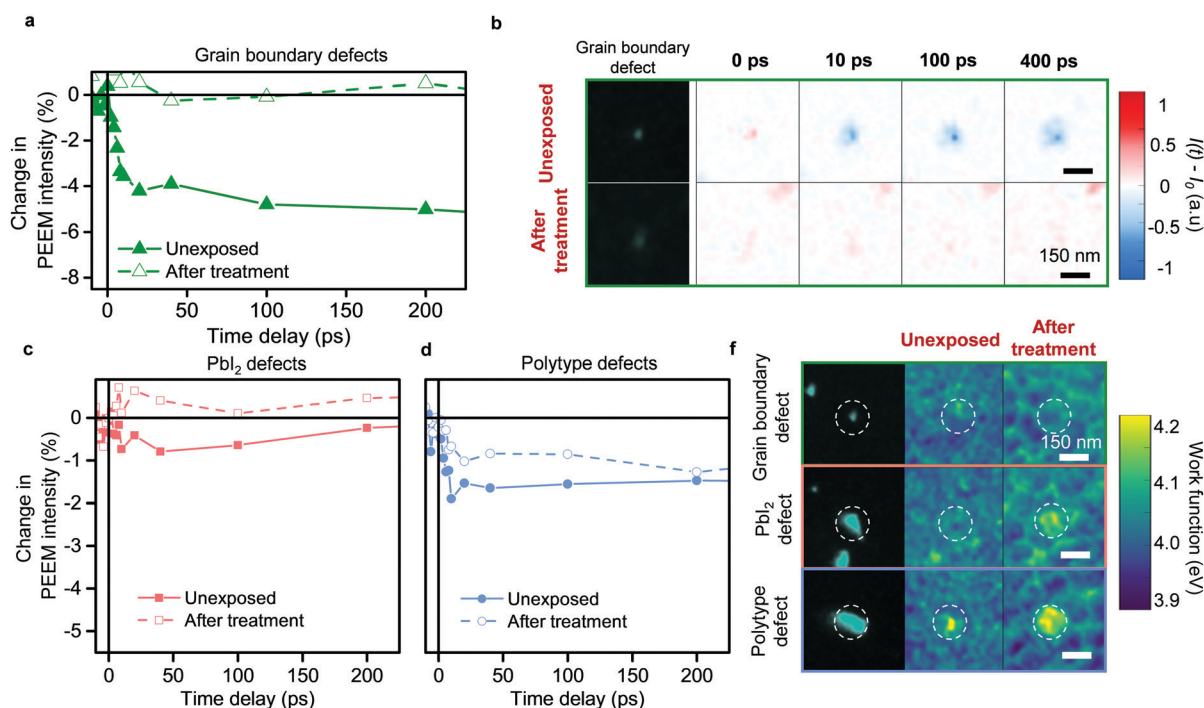


Fig. 4 Response of different types of defect clusters to treatment with visible light and mild dry air environment. (a) TR-PEEM decay curves averaged for multiple grain boundary defect clusters plotted as $(I(t) - I_0)/I_0 \times 100$ for unexposed case and after treatment with 1 mbar dry air pressure upon illumination, as labelled. (b) PEEM images of the representative grain boundary defect cluster for unexposed case and after treatment with visible light and dry air. Remaining columns show the TR-PEEM signal at different time-delays for the corresponding regions. (c) TR-PEEM decay curves averaged for multiple defect clusters of the same type before and after the treatment with dry air upon illumination for PbI_2 defect clusters. (d) TR-PEEM decay curves before and after the treatment for polytype defect clusters. (e) PEEM images for selected defect clusters as labelled (left column) and local work function maps (right columns) for unexposed case and after treatment with dry air upon illumination.



Conclusions

Our observation of multiple types of defects, which originate from different nanoscale compositions and play a surprisingly varied role in charge trapping, helps reconcile several previous observations and adds deeper insight into performance of hybrid perovskite films. Previous reports on high concentration of iodine species at the grain boundaries,³⁰ hole trapping by deep level iodine interstitials^{1,31,32} and facilitated iodine ion migration at the grain boundaries³³ suggest that grain boundary defect clusters contain a high density of interstitial iodine. The immediate healing of these highly detrimental defects by exposure to light and a mild dry air atmosphere, suggests a potential approach to remove one important channel of non-radiative recombination. Furthermore, several literature reports highlight passivation of grain boundary defects after the addition of moderate amount of PbI_2 resulting in an increase of open circuit voltage,¹⁶ enhanced carrier lifetimes,^{4,33} and suppressed current–voltage hysteresis.¹⁷ The relatively benign nature of PbI_2 defects *versus* the detrimental grain boundary defects suggests why these strategies appear to be successful. Previous reports show that, over time, material decomposition can lead to the formation of increased polytype phases.³⁴ Our work shows that in abundance these defective polytype phases become the dominant mechanism for photocarrier trapping and in limiting device efficiency. Thus, the development of targeted strategies to mitigate the formation or detrimental impact of these polytype defects, as well as other defect types, will benefit the long-term performance of photovoltaic devices. We believe that our approach can be applicable to various types of hybrid perovskites, including lead-free compositions.

Experimental methods

Perovskite preparation

Samples for the measurements have been prepared in Cambridge in a N_2 -filled glovebox and shipped to Okinawa Institute of Science and Technology Graduate University in sealed packaging to guarantee no exposure to ambient atmosphere or light.

Perovskite samples with chemical composition of $(\text{FA}_{0.78}\text{MA}_{0.17}\text{Cs}_{0.05})\text{Pb}(\text{I}_{0.83}\text{Br}_{0.17})_3$ have been spin-coated from precursor solutions containing (1 M) formamidinium iodide, (0.2 M) methylammonium bromide, (1.1 M) lead iodide and (0.22 M) lead bromide dissolved in 4:1 (v:v) anhydrous dimethylformamide (DMF)/dimethyl sulfoxide (DMSO). Caesium iodide has been first dissolved in DMSO (1.5 M), and then added to the precursor solution.

ITO substrates (1 cm × 1 cm in size) were sonicated in acetone and isopropanol (10 minutes per step) and then treated for 1 minute in an oxygen plasma cleaner. For nXRD/PEEM correlations, SiN windows (Norcada; NX7100c) were treated for 1 minute in an oxygen plasma cleaner. Precursor solution with triple cation mixed halide perovskite has been spin-coated on the substrates in a two-step manner: 2000 rpm for 10 seconds and 4000 rpm for 35 seconds. After 20 seconds into the second step, 100 μL of chlorobenzene was dropped on the substrate.

To finish crystallization films were annealed at 100 °C for 1 hour to achieve average grain size on the order of 250–500 nm, and film thickness of ~500 nm.

We used gold fiducial markers for position reference for all the samples.^{8,11} Gold fiducial markers have been prepared as a suspension of Au nanoplatelets in chlorobenzene, and spin-coated on the ready perovskite films at 1000 rpm for 20 seconds. Gold markers varied in size between few micrometers to few tens of micrometers, and had various shapes, which made it easy to use them as position reference for measurements and overlay analysis. We note that Au gold markers do not affect the film surface, or our measurements (see Fig. S2, ESI†).

PEEM and TR-PEEM experimental setup

Photoemission electron microscope (SPELEEM III, Elmitec GmbH) with hemispherical energy analyzer was coupled with ultrafast laser source (FemtoLasers XL:650) that delivers pulses of 45 fs, 650 nJ at 800 nm, and operates at 4 MHz. We used custom-built optical setup to generate 3rd and 4th harmonics from fundamental laser output (4.65 eV and 6.2 eV photons, respectively) *via* sum frequency generation. The layout and details of our experimental setup have been reported in Methods sections of our previous works.^{8,20}

PEEM imaging

Perovskite samples have been mounted on special cartridges for PEEM imaging inside of the N_2 -filled glovebox. Cartridges with samples have been transferred to the microscope inside of a hermetically sealed transfer suitcase to avoid exposure to ambient air. The base pressure in the main imaging chamber of the microscope was kept at 10^{-10} – 10^{-11} torr.

High resolution PEEM images of the defect clusters were acquired at 10 μm field of view using 4.65 eV probe photons, and contrast aperture. PEEM images of surface morphology have been acquired at 10 μm field of view with 6.2 eV probe photons, contrast aperture and energy analyzer slit set to 125 meV. TR-PEEM images have been acquired at 10 μm field of view without contrast aperture. Energy-resolved images for photoelectron spectra have been acquired with 6.2 eV photons, without contrast aperture, with energy analyzer slit set to 125 meV, thus providing approximately 125 meV energy resolution.

The probe photon fluence was kept below 100 nJ cm^{-2} for 4.65 eV photons, and below 10 nJ cm^{-2} for 6.2 eV photons for all measurements. Probe fluences were kept low during the experiments to avoid sample damage and space charge that usually causes spectral broadening in PEEM experiments and reduces PEEM image resolution. The fluence of 1.55 eV pump photons for TR-PEEM measurements was below 100 $\mu\text{J cm}^{-2}$.

PEEM images of defects have been taken with typical imaging conditions of 10–15 seconds exposure per frame, and averaged between 25–35 frames. Images of surface morphology have been acquired with 60–80 seconds exposure per frame, and averaged between 15–20 frames. Typical imaging conditions for TR-PEEM images were 1 second exposure and 64 averages per



frame (1 delay step). Scans have been repeated 4 times, and final images are result of 4 averages. Energy-resolved images for photoelectron spectra were obtained with 20 seconds exposure, and 4 averages per image.

Each PEEM image has been processed with flat field method to remove inhomogeneity originating from image-acquiring parts of the instrument. Multiple frames of one image have been drift-corrected before averaging.

Nano X-ray diffraction measurements

Measurements were performed on the i14 Hard X-ray Nanoprobe beamline at the Diamond Light Source, Didcot, UK using a 20 keV monochromated X-ray beam.³⁵ The diffracted X-rays were collected in a transmission geometry with an Excalibur 3 M detector consisting of 3 Medipix 2048 × 512 pixel arrays. For all measurements involving nXRD/PEEM correlations, samples were deposited on X-ray transparent, SiN windows from Norcada (product number NX7100C). The step size for the measurements was 100 nm and the dwell time was 0.75 s per point. All samples were stored in a nitrogen filled glovebox before measurement, and held under a nitrogen flow during measurements. 2D diffraction patterns were calibrated with a CeO₂ reference standard and radially integrated in the Data Analysis Workbench (DAWN).³⁶ Spatially resolved 1D nXRD patterns were then further analysed in the open source Python package Hyperspy.³⁷

Nanoscale spatial maps of photoelectron spectra and work function

Energy-resolved images for photoemission spectro-microscopy have been collected as a sequence with step of 100 meV in range from -1 to 3 eV around the valence band edge. We changed the microscope objective during the scan to maintain image focus and resolution at each energy step. Non-uniform intensity induced by dispersion in hemispherical energy analyzer has been corrected using a sample with uniform intensity as reference (gold marker). In order to determine Fermi level, we used cutoff energy at high energy side of the photoelectron spectrum taken from gold marker and plotted the spectra on binding energy scale.

To plot photoemission spectra, we extracted the photoemission intensity *versus* energy for each of the roughly 50 defect clusters within our 6 μm × 6 μm field of view from a stack of energy-resolved images using ImageJ software. To determine energy level position for each type of the defects, we performed multi-peak fitting using three Gaussian functions for photoemission spectra extracted from each defect cluster.

To plot work function spatial map, the PES from each pixel was extracted, and fit with a Gaussian to determine the position of the secondary edge cutoff. The work function was then calculated from $\Phi = h\omega - E_{\text{cutoff}}$ and plotted as a two-dimensional image. Energy-resolved images prior to that have been treated with flat field correction, non-uniform intensity has been removed, and a Gaussian filter (standard deviation $\sigma = 2$) has been applied.

Scanning electron microscopy measurements

SEM images for correlation with PEEM and photoluminescence maps have been acquired using FEI Quanta 250 FEG scanning electron microscope. The accelerating voltage was set to 5 kV with aperture of 2.5. SEM images have been correlated with PEEM images of defects using fiducial gold markers and also from comparison with PEEM images of the surface morphology as a guide. SEM measurements were performed last after all other measurements.

Atomic force microscopy measurements

Atomic force microscopy maps have been collected in air in a tapping mode with Bruker ICON3-OS1707 atomic force microscope, and flattened with ICON3 Bruker software. The height profiles have been plotted using Gwyddion software.

TR-PEEM trapping dynamics

Trapping dynamics for different types of defects have been extracted by recording intensity within each defect cluster of the same kind through sequence of images that corresponded to pump-probe time delays using ImageJ software. Extracted intensities have been normalized to intensity of gold fiducial marker to remove laser fluctuations. Negative time delay signal has been subtracted from positive time-delays. Subsequent extracted intensities have been averaged between multiple defects of the same kind and plotted as a function of time delay.

TR-PEEM images for each time delay have been generated by subtracting images from negative time delays from images that corresponded to positive time delays, and coloring negative change in intensity with blue, and positive with red.

The TR-PEEM curves for grain boundary defect clusters have been fitted with double-exponential equation:

$$y(t) = A_1 \times [\exp(-t/\tau_1) - 1] + A_2 \times [\exp(-t/\tau_2) - 1]$$

where A_1 and A_2 are amplitudes, and τ_1 and τ_2 are fast and slow time constants, respectively. The TR-PEEM traces for poly-type defect clusters have been fitted with single-exponential equation:

$$y(t) = A_1 \times [\exp(-t/\tau_1) - 1]$$

where A_1 and τ_1 are amplitude, and fast time constant, respectively.

Photoluminescence measurements

Photoluminescence maps have been acquired in air using confocal microscope (Nanofinder 30). Excitation source was a 532 nm continuous wave laser. Laser probe beam was focused through the 0.8 NA 100× objective lens, and intensity of the laser was minimized to approximately 500 nW. Photoluminescence mapping was performed by scanning 10 μm by 10 μm sample area (that was prior mapped with 4.65 eV probe photons in PEEM) with the galvanic mirror with a step of 143 nm.



Photoexposure to visible light and dry air

Samples have been transferred to a vacuum sealed suitcase, and attached to a separate chamber with window. The chamber was pumped and purged several times, and filled with dry air. We used mild amounts of dry air and filled the chamber to approximately 1 mbar pressure. The sample was then exposed to a He–Ne laser (633 nm, less than 1 sun intensity) through the window for 1 hour; after that the sample has been transferred back to PEEM inside the vacuum sealed suitcase. During this measurement the sample was not exposed to ambient air.

Author contributions

SK collected, analyzed and interpreted PEEM, TR-PEEM, confocal PL, SEM, and AFM data. AJW collected PEEM data, assisted in analysis and interpretation of data. AJW, JM and MM supported the TR-PEEM experiment, and CEP assisted in analysis and interpretation of data. NSC assisted with AFM measurements. SM prepared and provided samples. T ASD, SM, KF and MA, supervised by SDS, collected, analyzed and interpreted nXRD data. SDS, SM and T ASD assisted in interpretation of data. All authors contributed to discussions and manuscript preparation. KMD supervised the project.

Conflicts of interest

Samuel D. Stranks is a Co-Founder of Swift Solar Inc.

Acknowledgements

SK, AW, CEP, NSC, JM, MKLM, KMD acknowledge the support of the Femtosecond Spectroscopy Unit of the Okinawa Institute of Science and Technology Graduate University. The authors acknowledge support for this work from the Engineering Support Section of the Okinawa Institute of Science and Technology Graduate University. KMD acknowledges support by JSPS KAKENHI Grant Number JP19KO5637. SM acknowledges funding from an Engineering and Physical Sciences Research Council (EPSRC) studentship and support from the Japan Society for the Promotion of Science (JSPS) Summer Fellowship Programme. T ASD acknowledges the support of a National University of Ireland Travelling Studentship. SDS acknowledges the Royal Society and Tata Group (UF150033). The work has received funding from the European Research Council under the European Union's Horizon 2020 research and innovation programme (HYPERION – grant agreement no. 756962). The authors acknowledge the EPSRC (EP/R023980/1) for funding. KF acknowledges a George and Lilian Schiff Studentship, Winton Studentship, the Engineering and Physical Sciences Research Council (EPSRC) studentship, Cambridge Trust Scholarship, and Robert Gardiner Scholarship. MA acknowledges funding from the Marie Skłodowska-Curie actions (grant agreement no. 841386) under the European Union's Horizon 2020 research and innovation programme. The authors acknowledge

Diamond Light Source for time on Beamline I14 under Proposal sp19023, and input from Dr Paul Quinn and Dr Julia Parker.

References

- 1 D. Meggiolaro and F. De Angelis, *ACS Energy Lett.*, 2018, **3**, 2206–2222.
- 2 D. Meggiolaro, S. G. Motti, E. Mosconi, A. J. Barker, J. Ball, C. Andrea Riccardo Perini, F. Deschler, A. Petrozza and F. De Angelis, *Energy Environ. Sci.*, 2018, **11**, 702–713.
- 3 G. Sadoughi, D. E. Starr, E. Handick, S. D. Stranks, M. Gorgoi, R. G. Wilks, M. Bar and H. J. Snaith, *ACS Appl. Mater. Interfaces*, 2015, **7**, 13440–13444.
- 4 Q. Chen, H. Zhou, T. B. Song, S. Luo, Z. Hong, H. S. Duan, L. Dou, Y. Liu and Y. Yang, *Nano Lett.*, 2014, **14**, 4158–4163.
- 5 H. X. Dang, K. Wang, M. Ghasemi, M.-C. Tang, M. De Bastiani, E. Aydin, E. Duzon, D. Barrit, J. Peng, D.-M. Smilgies, S. De Wolf and A. Amassian, *Joule*, 2019, **3**, 1746–1764.
- 6 R. Szostak, J. C. Silva, S.-H. Turren-Cruz, M. M. Soares, R. O. Freitas, A. Hagfeldt, H. C. N. Tolentino and A. F. Nogueira, *Sci. Adv.*, 2019, **5**, eaaw6619.
- 7 D. W. de Quillettes, S. M. Vorpahl, S. D. Stranks, H. Nagaoka, G. E. Eperon, M. E. Ziffer, H. J. Snaith and D. S. Ginger, *Science*, 2015, **348**, 683–686.
- 8 T. A. S. Doherty, A. J. Winchester, S. Macpherson, D. N. Johnstone, V. Pareek, E. M. Tennyson, S. Kosar, F. U. Kosasih, M. Anaya, M. Abdi-Jalebi, Z. Andaji-Garmaroudi, E. L. Wong, J. Madeo, Y. H. Chiang, J. S. Park, Y. K. Jung, C. E. Petoukhoff, G. Divitini, M. K. L. Man, C. Ducati, A. Walsh, P. A. Midgley, K. M. Dani and S. D. Stranks, *Nature*, 2020, **580**, 360–366.
- 9 S. Seth, T. Ahmed, A. De and A. Samanta, *ACS Energy Lett.*, 2019, **4**, 1610–1618.
- 10 S. Macpherson, T. A. S. Doherty, A. J. Winchester, S. Kosar, D. N. Johnstone, Y. H. Chiang, K. Galkowski, M. Anaya, K. Frohna, A. N. Iqbal, B. Roose, Z. Andaji-Garmaroudi, P. A. Midgley, K. M. Dani and S. D. Stranks, 2021, preprint, arXiv:2107.09549, <https://arxiv.org/abs/2107.09549>.
- 11 T. W. Jones, A. Osherov, M. Alsari, M. Sponseller, B. C. Duck, Y.-K. Jung, C. Settens, F. Niroui, R. Brenes, C. V. Stan, Y. Li, M. Abdi-Jalebi, N. Tamura, J. E. Macdonald, M. Burghammer, R. H. Friend, V. Bulović, A. Walsh, G. J. Wilson, S. Lilliu and S. D. Stranks, *Energy Environ. Sci.*, 2019, **12**, 596–606.
- 12 M. Saliba, T. Matsui, J. Y. Seo, K. Domanski, J. P. Correa-Baena, M. K. Nazeeruddin, S. M. Zakeeruddin, W. Tress, A. Abate, A. Hagfeldt and M. Gratzel, *Energy Environ. Sci.*, 2016, **9**, 1989–1997.
- 13 L. Q. Xie, L. Chen, Z. A. Nan, H. X. Lin, T. Wang, D. P. Zhan, J. W. Yan, B. W. Mao and Z. Q. Tian, *J. Am. Chem. Soc.*, 2017, **139**, 3320–3323.
- 14 M. Abdelsamie, J. Xu, K. Bruening, C. J. Tassone, H. G. Steinrück and M. F. Toney, *Adv. Funct. Mater.*, 2020, **30**, 2001752.
- 15 P. Gratia, I. Zimmermann, P. Schouwink, J.-H. Yum, J.-N. Audinot, K. Sivula, T. Wirtz and M. K. Nazeeruddin, *ACS Energy Lett.*, 2017, **2**, 2686–2693.



- 16 Y. Chen, Q. Meng, Y. Xiao, X. Zhang, J. Sun, C. B. Han, H. Gao, Y. Zhang, Y. Lu and H. Yan, *ACS Appl. Mater. Interfaces*, 2019, **11**, 44101–44108.
- 17 T. Du, C. H. Burgess, J. Kim, J. Zhang, J. R. Durrant and M. A. McLachlan, *Sustainable Energy Fuels*, 2017, **1**, 119–126.
- 18 H. K. Kim, S. I. Kim, S. Kim, N. S. Lee, H. K. Shin and C. W. Lee, *Nanoscale*, 2020, **12**, 8216–8229.
- 19 M. K. L. Man, A. Margiolakis, S. Deckoff-Jones, T. Harada, E. L. Wong, M. B. M. Krishna, J. Madéo, A. Winchester, S. Lei, R. Vajtai, P. M. Ajayan and K. M. Dani, *Nat. Nanotechnol.*, 2017, **12**, 36–40.
- 20 E. L. Wong, A. J. Winchester, V. Pareek, J. Madéo, M. K. L. Man and K. M. Dani, *Sci. Adv.*, 2018, **4**, eaat9722.
- 21 R. Wong, M. K. L. Man and K. M. Dani, *Nanoscale Energy Transport*, IOP Publishing, 2020, pp. 10–11–10–33, DOI: 10.1088/978-0-7503-1738-2ch10.
- 22 K. Fukumoto, Y. Yamada, K. Onda and S.-Y. Koshihara, *Appl. Phys. Lett.*, 2014, **104**, 053117.
- 23 L. Wang, C. Xu, M. Y. Li, L. J. Li and Z. H. Loh, *Nano Lett.*, 2018, **18**, 5172–5178.
- 24 C. Xu, H. W. Yong, J. He, R. Long, A. R. Cadore, I. Paradisanos, A. K. Ott, G. Soavi, S. Tongay, G. Cerullo, A. C. Ferrari, O. V. Prezhdo and Z. H. Loh, *ACS Nano*, 2021, **15**, 819–828.
- 25 Y. Tian, M. Peter, E. Unger, M. Abdellah, K. Zheng, T. Pullerits, A. Yartsev, V. Sundstrom and I. G. Scheblykin, *Phys. Chem. Chem. Phys.*, 2015, **17**, 24978–24987.
- 26 R. Brenes, D. Guo, A. Osherov, N. K. Noel, C. Eames, E. M. Hutter, S. K. Pathak, F. Niroui, R. H. Friend, M. S. Islam, H. J. Snaith, V. Bulović, T. J. Savenije and S. D. Stranks, *Joule*, 2017, **1**, 155–167.
- 27 S. G. Motti, M. Gandini, A. J. Barker, J. M. Ball, A. R. Srimath Kandada and A. Petrozza, *ACS Energy Lett.*, 2016, **1**, 726–730.
- 28 M. Anaya, J. F. Galisteo-Lopez, M. E. Calvo, J. P. Espinos and H. Miguez, *J. Phys. Chem. Lett.*, 2018, **9**, 3891–3896.
- 29 J. F. Galisteo-Lopez, M. Anaya, M. E. Calvo and H. Miguez, *J. Phys. Chem. Lett.*, 2015, **6**, 2200–2205.
- 30 W. Li, M. U. Rothmann, A. Liu, Z. Wang, Y. Zhang, A. R. Pascoe, J. Lu, L. Jiang, Y. Chen, F. Huang, Y. Peng, Q. Bao, J. Etheridge, U. Bach and Y.-B. Cheng, *Adv. Energy Mater.*, 2017, **7**, 1700946.
- 31 J.-S. Park, J. Calbo, Y.-K. Jung, L. D. Whalley and A. Walsh, *ACS Energy Lett.*, 2019, **4**, 1321–1327.
- 32 W. Li, J. Liu, F.-Q. Bai, H.-X. Zhang and O. V. Prezhdo, *ACS Energy Lett.*, 2017, **2**, 1270–1278.
- 33 C.-J. Tong, L. Li, L.-M. Liu and O. V. Prezhdo, *ACS Energy Lett.*, 2018, **3**, 1868–1874.
- 34 P. E. Marchezi, E. M. Therézio, R. Szostak, H. C. Loureiro, K. Bruening, A. Gold-Parker, M. A. Melo, C. J. Tassone, H. C. N. Tolentino, M. F. Toney and A. F. Nogueira, *J. Mater. Chem. A*, 2020, **8**, 9302–9312.
- 35 P. D. Quinn, L. Alianelli, M. Gomez-Gonzalez, D. Mahoney, F. Cacho-Nerin, A. Peach and J. E. Parker, *J. Synchrotron Radiat.*, 2021, **28**, 1006–1013.
- 36 M. Basham, J. Filik, M. T. Wharmby, P. C. Chang, B. El Kassaby, M. Gerring, J. Aishima, K. Levik, B. C. Pulford, I. Sikharulidze, D. Sneddon, M. Webber, S. S. Dhesi, F. Maccherozzi, O. Svensson, S. Brockhauser, G. Naray and A. W. Ashton, *J. Synchrotron Radiat.*, 2015, **22**, 853–858.
- 37 F. De la Peña, E. Prestat, V. T. Fauske, P. Burdet, T. Furnival, P. Jokubauskas and J. C. Myers, *hyperspy/hyperspy: Release v1.6.1*, Zenodo, 2020, DOI: 10.5281/zenodo.4294676.

