



REVIEW

[View Article Online](#)
[View Journal](#) | [View Issue](#)

 Cite this: *Mater. Chem. Front.*,
2020, 4, 2517

Recent advances of hollow-structured sulfur cathodes for lithium–sulfur batteries

 Xia Huang,^a Tengfei Qiu,^a Xinghao Zhang,^b Lei Wang,^c Bin Luo *^{ab} and
Lianzhou Wang *^a

Lithium–sulfur batteries (LSBs) have attracted increasing interest due to their high theoretical energy density and low-cost sulfur. Challenges are still faced in the development of sulfur cathodes, due to the insulating properties of sulfur and lithium sulfide, diffusion of soluble polysulfides and slow redox kinetics of electrochemical conversion reactions. Hollow-structured materials with features such as high specific surface area, tunable pore structure, and controllable morphology and composition have shown great potential to be applied in high performance sulfur cathodes for LSBs. To promote further breakthroughs in this amazing field, this review highlights on the recent advances of hollow-structured sulfur cathodes, with an emphasis on polar inorganic/organic materials that exhibit strong interactions with polysulfides, thus suppressing the unfavourable shuttle effect, and/or efficient catalytic activity towards sulfur conversion reactions, thus improving the redox kinetics. Material design principles, experimental methods and the subsequent effects on electrochemical performance are discussed. The remaining challenges and perspectives associated with sulfur cathode design and battery evaluation are also presented.

 Received 7th May 2020,
Accepted 21st June 2020

DOI: 10.1039/d0qm00303d

rsc.li/frontiers-materials

1 Introduction

Lithium-ion batteries (LIBs) have powered the revolution of our modern society, becoming more and more indispensable, from portable to large-scale electronic devices such as mobile phones and vehicles.¹ After three decades of intensive research, the energy density of LIBs is approaching their physical limit (500–600 W h kg⁻¹) based on intercalation/deintercalation reactions of Li ions.^{2,3} Besides, the high cost of LIBs hampers the popularity of electric vehicles.⁴ The ever-growing demands for batteries with higher energy density and lower cost have triggered the (re)exploration of alternative electrochemistry, such as lithium–air,⁵ metal–sulfur,⁶ and metal-ion (Na, K, Mg, Ca, Al) batteries.⁷ Among these electrochemical energy storage systems, lithium–sulfur batteries (LSBs) composed of a lithium anode and a sulfur cathode, which deliver a high theoretical energy density of 2600 W h kg⁻¹ and are of low cost owing to the earth abundant and eco-friendly sulfur, have been regarded

as one of the most promising candidates.⁸ Hence, it is not surprising that the study of LSBs is dated back to the 1960s.⁹ Nevertheless, in early studies, challenges including low sulfur utilization caused by the intrinsic insulating nature of sulfur and its reduction products (lithium sulfides), and short cycling life owing to the highly soluble lithium polysulfide intermediates (LiPSs), hindered the in-depth research on LSBs. The interest in LSBs was soon shadowed under the effulgence of more reliable LIBs. There remained sporadic research efforts focusing on identifying the redox couples in LSBs operated in different electrolyte systems (solvents and salts).^{10,11}

In recent years, with the rapid development of materials science and nanotechnology, the research on LSBs has made much progress.^{12,13} In 2009, Nazar's group applied a highly ordered mesoporous carbon nanostructure (CMC-3) as the sulfur host for the first time, which dramatically improved the capacity from less than 500 mA h g⁻¹ to 1320 mA h g⁻¹ with an impressive sulfur utilization of 80%.¹⁴ Since then, the electrical conductivity and the LiPS trapping ability have become criteria for the design of sulfur host materials. The LSB community has focused on carbonaceous materials featuring high conductivity and high specific area (SSA), providing an efficient conductive framework and physical confinement to LiPSs.¹⁵ Later, it was realized that to achieve long-term cycling performance of >200 cycles, the weak interaction between the non-polar carbon and polar LiPSs was not enough.¹⁶ Then, it was found that various metal oxides/sulfides/nitrides and metal–organic-frameworks

^a Nanomaterials Centre, School of Chemical Engineering and Australian Institute for Bioengineering and Nanotechnology, The University of Queensland, St Lucia, QLD 4072, Australia. E-mail: b.luo1@uq.edu.au, l.wang@uq.edu.au

^b State Key Laboratory Base of Eco-chemical Engineering, College of Chemical Engineering, Qingdao University of Science and Technology, Qingdao, 266042, P. R. China

^c State Key Laboratory Base of Eco-chemical Engineering, College of Chemistry and Molecular Engineering, Qingdao University of Science and Technology, Qingdao, 266042, P. R. China

(MOFs) could form strong chemical bond with LiPSs, which greatly enhanced the long-term cycling stability (up to 1000 cycles).^{17,18} Thereupon, the strong chemical interaction with LiPSs became an essential requirement for sulfur hosting materials.^{19–21} More recently, electrocatalysis in LSBs, which has been proved to be able to facilitate the conversion kinetics of sulfur species and reduce the redox overpotential and thus increase the sulfur utilization and prolong the battery cycling life, is becoming a new focus for sulfur host design.^{22–24}

Along with an understanding of the chemistry of sulfur hosting materials, studying the morphology and microstructure of these materials also plays a significant role in LSB research.²⁵ A wide spectrum of sulfur hosts with a variety of morphologies, including porous/hollow nano-spheres, nanowires/nanotubes, nanosheets/nanoplates and hierarchical structures, have been developed.^{26,27} Hollow-structured nanomaterials stand out as there are plenty of void spaces for accommodating sulfur or lithium sulfide, buffering the huge volume expansion of sulfur during the charge process and physically confining LiPSs.^{28–30} In its first phase, the development of various carbon hollow structures using different hard- and soft-templating methods has provided tremendous opportunities for sulfur cathode design, due to their high specific surface area, tuneable porosity, and controllable morphology.¹⁵ Many kinds of hollow carbon-based sulfur cathodes have been demonstrated with improved sulfur utilization and cycling stability.^{31–36} Although hollow carbon structures can provide physical confinement to sulfur in the pore channels, the weak interaction between the nonpolar carbon and polar LiPSs cannot effectively immobilize LiPSs in a long run. Subsequently, other strategies, such as doping with heteroatoms (*e.g.*, N or S) or decorating with inorganic polar species, have thus been developed as efficient methods to enhance the chemisorption between LiPSs and the carbon host.^{19,36–38} Recent studies on hollow carbon structures in LSBs have been summarised in another review paper.³⁹

Hollow-structured materials with high conductivity, strong LiPS adsorption capability and efficient electrocatalytic activity are supposed to boost the electrochemical performance of LSBs. In this review, we summarize the recent progress and the foremost findings on hollow structured sulfur cathodes. In particular, we focus on hollow structures containing polar inorganic/organic materials, emphasizing the synthesis methods, and the relationship between material microstructures and electrochemical performance of LSBs. In an attempt to provide guidance towards the rational design of practical sulfur cathodes, challenges and perspectives for future development of LSBs are provided.

2 An overview of LSBs and hollow-structured sulfur cathodes

2.1 The redox chemistries and challenges of LSBs

A typical LSB consists of a lithium anode, sulfur cathode, polypropylene separator, and ether-based electrolyte. The typical galvanostatic discharge/charge profile and cyclic voltammogram are shown in Fig. 1a and b, respectively. During the discharge

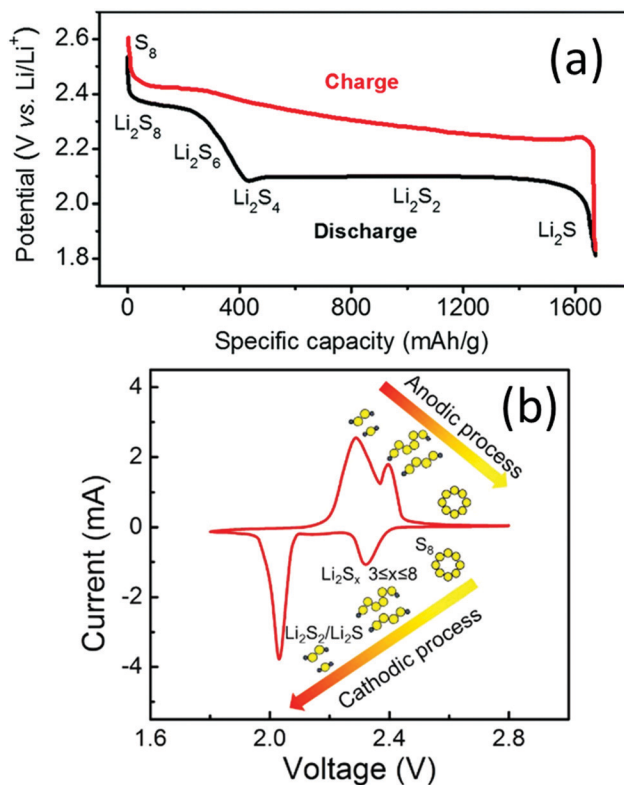


Fig. 1 (a) Typical two-plateau discharge/charge curves of LSBs in ether-based electrolytes. Reproduced with permission.¹² Copyright 2016, the Royal Society of Chemistry. (b) CV profile of LSBs in ether-based electrolytes. Reproduced with permission.⁴² Copyright 2017 Elsevier.

process, the solid S_8 undergoes stepwise reduction reactions towards Li_2S with a series of soluble polysulfide intermediates.⁴⁰ In detail, S_8 is initially reduced to Li_2S_8 , and the solid-liquid process generates the first plateau at a potential of 2.2–2.3 V vs. Li^+/Li (Fig. 1a). Li_2S_8 is then reduced to shorter-chain LiPSs, such as Li_2S_6 and Li_2S_4 , and the liquid-liquid transformation generates a slope in the discharge curve (Fig. 1a). The theoretical capacity of these two processes is 419 mA h g^{-1} ,⁴¹ corresponding to the first cathodic peak at around 2.2–2.4 V vs. Li^+/Li in the CV curves (Fig. 1b). The short-chain LiPSs can be either directly reduced to solid Li_2S or follow stepwise reduction from Li_2S_2 to Li_2S , generating the long-plateau at a potential of 1.9–2.1 V vs. Li^+/Li . These processes correspond to the second cathodic peak at around 2.0 V vs. Li^+/Li in the CV curves (Fig. 1b). The low-potential steps contribute three quarters of the overall theoretical capacity (1256 mA h g^{-1}).⁴¹ During the charge process, lithium sulfides are reversibly oxidised back to sulfur.

Despite the high theoretical energy density, there are several critical issues hindering the functioning of LSBs. For the sulfur cathodes, firstly, the insulating nature (both ionically and electronically) of the solid sulfur species (S_8 , Li_2S_2 and Li_2S) blocks the charge/ion transfer in the active species. Adding conductive additives is one possible way to make batteries work. However, the quantity of additives has to be strictly controlled, as any excess amount of conductive additives is detrimental to

the overall energy density. Moreover, the accumulation of sulfur on the electrode surface during repeated charge and discharge cycles increases the cell polarization and leads to higher possibility of device failure caused by the blocking of Li^+ or e^- pathways.⁴³ Secondly, the soluble LiPSs shuttle between two electrodes and chemically react with lithium, causing active material loss, lithium corrosion, and electrolyte consumption. For Li anodes, inhomogeneous lithium deposition and lithium dendrite growth lead to repeated breaking and formation of the solid–electrolyte interface (SEI), which consumes lithium and the electrolyte.⁴⁴ Moreover, lithium dendrites may cause short-circuit, leading to safety issues.⁴⁵ For the electrolyte, the widely used ether-based electrolytes consist of flammable solvents and oxidative LiNO_3 , raising safety concerns for practical application.⁴⁶

2.2 Hollow-structured sulfur cathodes

The design of hollow structured sulfur cathodes is a primary way for improving the performance of LSBs. Generally, there are two approaches to prepare hollow structured sulfur composites. One is infiltrating sulfur into the prefabricated hollow nano-materials *via* a melt-diffusion or a dissolving–evaporation process;^{14,47} the other is encapsulating the prefabricated sulfur nanoparticles by *in situ* growing materials on the surface of sulfur. Benefiting from the significant progress of the design and synthesis of hollow structures, the first method is convenient, low cost and widely applicable to a wide spectrum of hollow-structured materials. The melt-diffusion approach usually involves a heat treatment process of the mixture of hosts and sulfur in a sealed vial at around 155 °C, when sulfur exhibits low viscosity and can easily infiltrate into or disperse onto the host matrix.⁴⁸ Sometimes, an additional heat treatment step at around 300 °C is applied to remove the sulfur remaining on the outer surface of the host. The dissolving approach is realised by dissolving sulfur in carbon disulfide (CS_2) or other solvents with high sulfur solubility, followed by either immersing the host into the sulfur-containing solution or directly dropping a specific amount of solution onto the hosts.⁴⁷ CS_2 can be easily removed *via* evaporation at room temperature under stirring. Although sulfur can infiltrate into the hollow structure by the dissolving approach, it is difficult to avoid sulfur aggregation. Moreover, sulfur species can spread out from the host.⁴⁹ To better control the sulfur dispersion, sulfur nanoparticles offer an option. There are two methods widely used to prepare nano-sized sulfur particles. One is the acid catalysed precipitation of sodium thiosulphate (eqn (1)). Dilute HCl or H_2SO_4 is predominantly used as the acid catalyst, and the surfactants are added to control the size of sulfur particles.⁵⁰ Another one is a microemulsion technique, using sodium polysulfide and HCl as the reactants (eqn (2)).⁵¹



Hollow-structured sulfur cathodes summarized in this review are divided into two categories: inorganic hollow-structured sulfur cathodes, which apply hollow metal compounds or metal

compound decorated hollow carbons as sulfur host materials, and organic hollow-structured sulfur cathodes, which utilize conductive polymers and organic frameworks.

3 Inorganic hollow-structured sulfur cathodes

Compared to nonpolar carbon, inorganic materials with polar surfaces have a better ability to anchor polysulfides. It's worth mentioning that many materials that chemically interact with LiPSs simultaneously possess electrocatalytic activity.^{24,52} A wide range of inorganic hollow structures, such as metal oxides, metal sulfides, metal nitrides, metal hydroxides, metal phosphides, and their hybrids with hollow carbons, have been investigated as sulfur-hosting materials.

3.1 Metal oxides

Metal oxides with different morphologies have been widely studied and used as sulfur hosts, or cathode mediators in LSBs.⁵³ Metal oxides contain a strong polar surface owing to the oxygen anion (O^{2-}), and thus they typically exhibit strong chemical interactions with LiPSs.²¹ The low-cost and easy fabrication of metal oxides greatly promoted their application in LSBs.⁵⁴ The major drawback of metal oxides is their poor conductivity, which seriously affects the rate performance of LSBs. To improve their conductivity, metal oxides have been incorporated into different hollow carbon structures, such as carbon hollow nanofibers, nanoboxes, and nanospheres. Furthermore, developing other phases (such as Magnéli phase), or creating oxygen vacancies is another approach to increase the intrinsic conductivity of metal oxides. In this part, MnO_2 and TiO_2 , which are among the most widely studied metal oxides in LSBs are used as examples to demonstrate the rational design of highly efficient hollow-structured metal oxide sulfur hosts.

3.1.1 MnO_2 . MnO_2 is widely known as the electrode material for Zn– MnO_2 batteries. Nazar's group initially demonstrated that MnO_2 acted as an efficient polysulfide mediator to immobilize LiPSs *via* reacting with LiPSs, forming surface-bound intermediates of thiosulfate (Fig. 2f).⁵³ In their work, MnO_2 nanosheets were fabricated through the reaction of graphene oxide and KMnO_4 . The melt-diffusion process was applied to incorporate sulfur into the MnO_2 host, generating 75S/ MnO_2 nanosheet composites (Fig. 2a, sulfur content 75 wt%). The superior polysulfide entrapment ability of MnO_2 nanosheets was confirmed by an *in situ* visual electrochemical measurement of 75S/ MnO_2 and 75S/KB (using Ketjenblack carbon as the host). The electrolyte of 75S/ MnO_2 remained light yellow at the end of the discharge–charge process (after 12 h), which was in sharp contrast to that of 75S/KB (Fig. 2d). Taking advantage of the hollow structure, the authors further constructed a sulfur–core MnO_2 shell architecture by *in situ* growing of MnO_2 nanosheets onto the sulfur particles (Fig. 2b) by a simple redox reaction between sulfur and potassium permanganate (Fig. 2e).⁵⁵ To buffer the volume expansion of sulfur electrode, the yolk-shelled S– MnO_2 structure (Fig. 2c) was created by

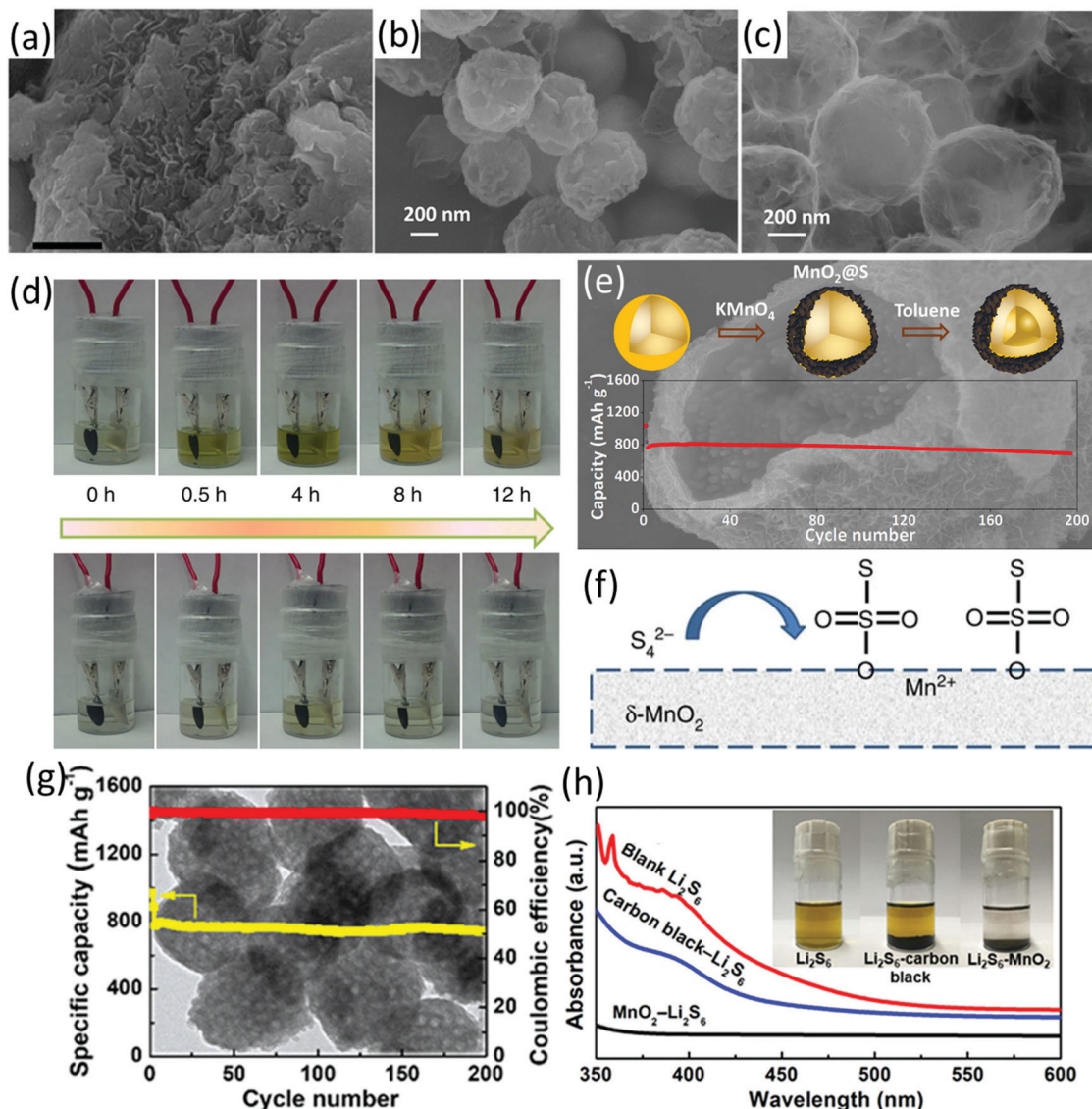


Fig. 2 SEM images of (a) 75S/MnO₂ nanosheet composite (scale bars, 50 nm), (b) spherical sulfur nanoparticles, and (c) rinsed (by toluene) NS-core/MnO₂ with a sulfur content of 80 wt%, (d) visual *in situ* electrochemical measurement at C/20, 75S/KB (up) and 75S/MnO₂ (down), (e) schematic illustration of the preparation process, SEM image and cycling performance of the core-shell S-MnO₂ composite, (f) schematic for the interaction-reaction mechanism of MnO₂ and LiPSs with the formation of surface-bound intermediates of thiosulfate. (a, d and f) Reproduced with permission.⁵³ Copyright 2015 Springer Nature. (b, c and e) Reproduced with permission.⁵⁵ Copyright 2016 American Chemical Society. (g) SEM image and cycling performance of the S-mesoporous MnO₂ nanosphere composite, (h) visual polysulfide adsorption test using mesoporous MnO₂ nanosphere and carbon black as the adsorbents (after 0.5 h) and the corresponding UV-vis spectra of the supernatant. Reproduced with permission.⁶⁰ Copyright 2018 American Chemical Society.

partially dissolving the sulfur core using toluene. The yolk-shell S-MnO₂ composite (sulfur content 82 wt%) achieved a high capacity of 950 mA h g⁻¹ after 300 cycles at 0.5C, which was 88% of its initial capacity. The capacity of the yolk-shell S-MnO₂ cathode remained at 315 mA h g⁻¹ after 1700 cycles at 2C, corresponding to a capacity decay rate of 0.039% per cycle. Since then, MnO₂ with different structures have been developed as sulfur host materials.^{56–58} A core-shell composite with λ-MnO₂ nanorod encapsulated sulfur was prepared, which exhibited a capacity retention of 82% for 300 cycles at 0.5C.⁵⁹ The enhanced high-rate performance was attributed to the unique one-dimensional λ-MnO₂ nanorods, which acted as large tunnels to incorporate

Li ions, preventing the deposition of solid lithium sulfide. It was further revealed that the capacity degradation could be attributed to the phase transformation from λ-MnO₂ to Mn₃O₄.

Besides encapsulating the prefabricated sulfur nanoparticles in MnO₂, mesoporous MnO₂ nanospheres were fabricated and used as a sulfur host (Fig. 2g).⁶⁰ To prepare MnO₂ nanospheres, polyaniline coated SiO₂ spheres were firstly prepared (PANI@SiO₂). MnO₂ was formed on the surface of PANI@SiO₂ *via* the reaction between KMnO₄ and PANI. The mesoporous MnO₂ nanospheres were finally obtained after purification by annealing and the removal of SiO₂ using NaOH solution. MnO₂ nanospheres did not have obvious morphology change after the melt-diffusion

process, suggesting their robust structure. The strong interaction of the mesoporous MnO_2 nanospheres and LiPSs was confirmed by the visual LiPSs adsorption test using MnO_2 as the adsorbent and UV-vis measurements (Fig. 2h). Benefiting from the strong LiPSs entrapment from both chemical interaction and physical confinement, the MnO_2 -based sulfur electrode delivered an initial capacity of $1349.3 \text{ mA h g}^{-1}$ and exhibited a capacity decay rate of 0.073% per cycle for 500 cycles at 1C.

Despite the impressive polysulfide entrapment of MnO_2 , its poor conductivity remains a concern. In this regard, MnO_2 has been integrated with different hollow carbon structures. For example, carbon hollow nanofibers filled with MnO_2 nanosheets ($\text{MnO}_2@HCF$, Fig. 3b) were prepared using MnO_2 nanowires as hard templates.⁶¹ As shown in Fig. 3a, MnO_2 nanowires were firstly

coated with SiO_2 and resorcinol formaldehyde (RF) resin ($\text{MnO}_2@SiO_2@RF$), followed by annealing and removal of the SiO_2 interlayer to achieve $\text{MnO}_2@HCF$. At a sulfur content of 71 wt% and a sulfur loading of 3.5 mg cm^{-2} , the $\text{MnO}_2@HCF$ -based sulfur electrode delivered a capacity of 662 mA h g^{-1} after 300 cycles at 0.5C, corresponding to an areal capacity of 2.3 mA h cm^{-2} . The hollow carbon nanofibers enabled a fast electron and ion transfer, while the polysulfide diffusion was suppressed by the strong chemical bonding of MnO_2 and physical confinement of the hollow structure. Based on a similar methodology, $\text{MnO}_2@$ carbon hollow nanoboxes were prepared using MnCO_3 nanocubes as the template and precursor (Fig. 3c and d).⁶² In these situations, Mn-based species were used as both template and precursor, leading to the formation of hybrids with MnO_2 filled inside the

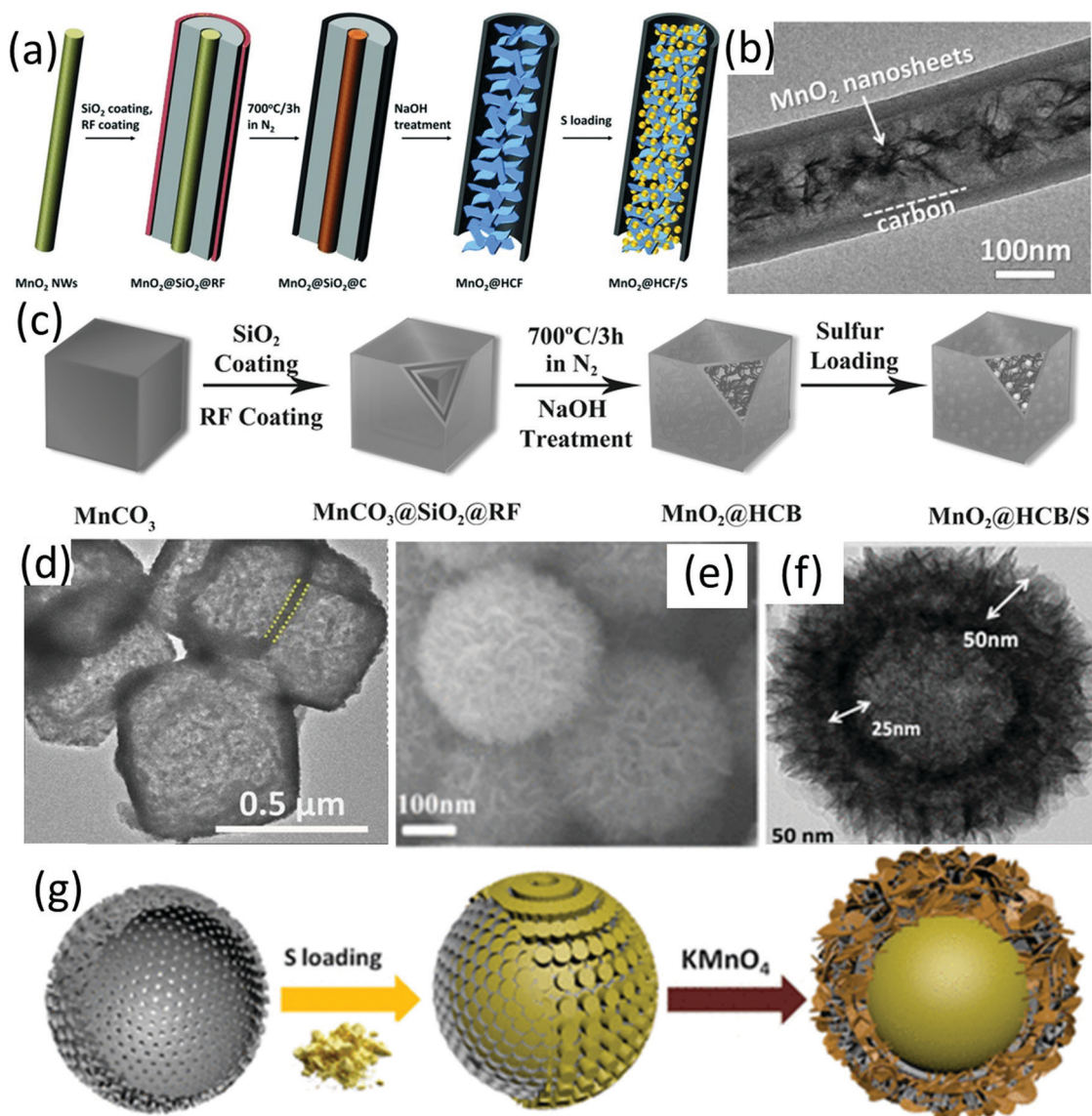
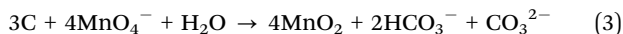


Fig. 3 (a) Schematic for $\text{MnO}_2@HCF/S$ preparation, (b) TEM image of $\text{MnO}_2@HCF$, reproduced with permission.⁶¹ Copyright 2015 Wiley-VCH. (c) Schematic for $\text{MnO}_2@HCB/S$ nanobox preparation, (d) TEM image of $\text{MnO}_2@HCB$ nanoboxes, reproduced with permission.⁶² Copyright 2017 Wiley-VCH. (e) SEM and (f) TEM images and, (g) schematic for the preparation of a $S@C@MnO_2$ dual core-shell hybrid, reproduced with permission.⁶⁴ Copyright 2017 American Chemical Society.

hollow structure. In another study, MnO_2 nanosheets were *in situ* grown on carbon fibres *via* the reaction of KMnO_4 solution and carbon (eqn (3)), forming coaxial C/ MnO_2 hollow nanofibers.⁶³ The coaxial C/ MnO_2 hollow nanofiber-based sulfur cathode exhibited a low capacity decay rate of 0.044% and 0.051% per cycle over 1000 cycles at 1C and 2C, respectively. A dual sulfur@carbon@ MnO_2 core-shell structure (Fig. 3e-g) has been designed and synthesized by the same group, delivering an impressive rate-performance of 465 mA h g^{-1} at 4C, and a low capacity decay rate of 0.052% per cycle for 1000 cycles at 3C.⁶⁴



Besides the versatile carbon matrixes, conductive polymers are another choice to improve the conductivity of sulfur- MnO_2 composites. For example, a hybrid hollow structure composed of MnO_2 nanosheet coating layer and sulfur@poly(3,4-ethylenedioxythiophene) nanospheres (MnO_2 @sulfur@PEDOT) was fabricated.⁶⁵ The hybrid structure with a superior electrolyte wettability delivered a capacity of 827 mA h g^{-1} at 0.2C after 200 cycles, which was superior to that of sulfur@PEDOT (551 mA h g^{-1}). Last but not the least, it was reported that the chemical interaction of MnO_2 with LiPSs can be enhanced *via*

creating oxygen vacancies.⁶⁶ The oxygen vacancies generated by annealing MnO_2 hollow spheres in a reducing atmosphere (H_2/N_2 : 8/92 at volume) not only provided more surface-active sites for LiPSs adsorption and solid lithium sulfide precipitation, but also facilitated the transformation of LiPSs to thiosulfate and polythionate intermediates. LSBs using MnO_2 with oxygen vacancies as the sulfur host delivered a capacity of 551 mA h g^{-1} after 400 cycles at 2C, which was better than that of 410 mA h g^{-1} using pristine MnO_2 as the sulfur host.

3.1.2 TiO_2 . TiO_2 is another metal oxide which has long been used as a cathode additive or sulfur host material for LSBs owing to its strong interaction with LiPSs and its nature abundance and nontoxicity. TiO_2 with different phases has been investigated both experimentally and theoretically.^{67,68} With an emphasis to create enough space to buffer the huge volume expansion of sulfur during lithiation, a sulfur- TiO_2 yolk-shell has been initially proposed by Cui and co-workers (Fig. 4a and b).⁶⁹ Monodispersed sulfur nanoparticles with a diameter of around 800 nm were firstly prepared *via* the reaction of sodium thio-sulfate and hydrochloric acid. A TiO_2 layer with a thickness of around 15 nm was coated on the as-obtained sulfur spheres through a controllable hydrolysis of titanium diisopropoxide bis(acetylacetonate) in a solution of alkaline/aqueous isopropanol.

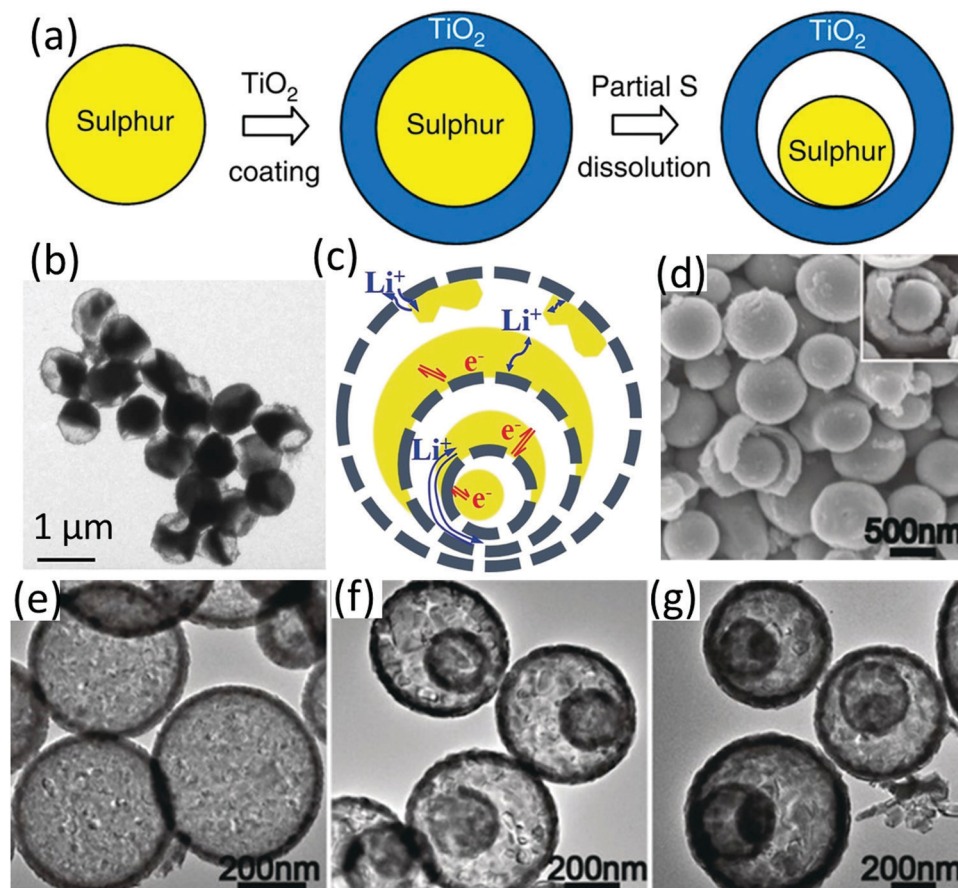
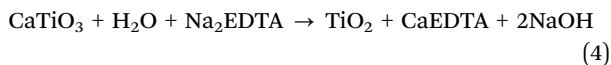


Fig. 4 (a) Schematic of the synthesis route, and (b) TEM image of the sulfur- TiO_2 yolk-shell nanostructure. Reproduced with permission.⁶⁹ Copyright 2013 Springer Nature. (c) Schematic for the lithiation/delithiation process of sulfur@HoMS, (d) SEM image of 3S- TiO_{2-x} HoMSs, and TEM images of (e) 1S- TiO_{2-x} HoMSs, (f) 2S- TiO_{2-x} HoMSs, and (g) 3S- TiO_{2-x} HoMSs. Reproduced with permission.⁷⁰ Copyright 2019 Wiley-VCH.

The yolk-shell nanoarchitecture was created after partial dissolution of the inner sulfur using toluene. The as-obtained sulfur-TiO₂ yolk-shell composite (sulfur content 71 wt%) exhibited an initial capacity of 1030 mA h g⁻¹ at 0.5C with a capacity retention of 81% and 67% after 500 and 1000 cycles, respectively. The yolk-shell structure allowed the volume expansion of sulfur electrode, and the intact TiO₂ shell with a small pore size of around 0.3 nm effectively minimized the diffusion of polysulfide, leading to a superior electrochemical performance to those of bare sulfur and sulfur-TiO₂ core-shell counterparts.

More recently, the application of TiO₂ microboxes as sulfur host has been reported.⁷¹ CaTiO₃ microcubes, the self-sacrificial templates for the synthesis of TiO₂ microboxes, were firstly prepared *via* a solvothermal process, followed by the generation of H₂TiO₃ layer on the surface of CaTiO₃ and then TiO₂ coated CaTiO₃ *via* Na₂EDTA-assisted ion exchange of CaTiO₃ (eqn (4)).⁷² The formation of the hollow structure was driven by the ion exchange between CaTiO₃ and H⁺ at a different outward and inward diffusion rate, respectively.⁷³ TiO₂ microboxes exhibited efficient polysulfide adsorption ability, as revealed by visualized LiPS adsorption and the following UV-vis measurement.⁷¹ Infiltrating sulfur into the TiO₂ microboxes *via* melt-diffusion generated the TiO₂/S composite (sulfur content 70 wt%), whose capacity was maintained at 600 mA h g⁻¹ after 500 cycles at 1C. However, obvious voltage humps were observed at the initial charge curves due to the low conductivity of TiO₂.⁷¹



Developing other phases (such as the Magnéli phase, Ti_nO_{2n-1}) and creating oxygen vacancies have been widely used to increase the conductivity of metal oxides.^{74,75} In addition, multi-shelled hollow structures have demonstrated attracting properties for a wide range of applications (such as energy storage and conversion), which have gained increasing research interest.⁷⁶⁻⁷⁸ For example, multi-shelled hollow TiO_{2-x} (TiO_{2-x} HoMSSs) prepared *via* a sequential templating approach (STA) has been demonstrated as an efficient sulfur carrier (Fig. 4c-g).⁷⁰ To prepare TiO₂ HoMSSs, carbonaceous microspheres (CMS) were firstly synthesized *via* the emulsion polymerization of sucrose through a hydrothermal process, followed by a controlled hydrolysis of TiCl₄ in the solution containing the as-obtained CMS solution, and a subsequent calcination step in air. The number of shells can be controlled *via* tuning the aging conditions and annealing process. The surface hydrogenated TiO_{2-x} HoMSSs were prepared *via* annealing the as-obtained TiO₂ HoMSSs in an Ar/H₂ (1:9) atmosphere, generating oxygen vacancies and Ti³⁺ ions. Owing to oxygen vacancies and Ti³⁺ ions, TiO_{2-x} HoMSSs not only provided multiple spatial confinement and chemical interactions with LiPSs, but also enhanced the electron mobility and electrolyte penetration. The electrochemical properties of TiO_{2-x} HoMSSs with one, two and three shells (1S-TiO_{2-x} HoMSSs, 2S-TiO_{2-x} HoMSSs, and 3S-TiO_{2-x} HoMSSs, respectively) were investigated, among which the triple-shelled one presented the best performance with an initial capacity of 903 mA h g⁻¹ at 0.5C and a superior capacity retention of 79% for 1000.

Lou and co-workers designed a hybrid hollow structure composed of highly conductive TiO and carbon shells (TiO@C-HSSs).⁷⁹ TiO presented almost an order of magnitude higher electrical conductivity than the Magnéli phase (Ti_nO_{2n-1}). The preparation process is shown in Fig. 5a-d. TiO₂ and polydopamine were sequentially coated on the polystyrene surface, generating PS@TiO₂ and PS@TiO₂@PDA, respectively. TiO@C-HSSs were obtained after annealing PS@TiO₂@PDA in N₂/H₂ (95/5) flow, during which TiO₂ was reduced to conductive TiO, PS was decomposed and a carbon layer derived from PDA was formed on the surface. It was worth noting that without PDA, the PS@TiO₂ core-shell structure would totally collapse after the annealing process, suggesting that PDA played an essential role in the formation of the robust shells. Benefiting from the superior conductivity of the TiO@C shells, the TiO@C-HS based sulfur electrode delivered a capacity of 750 mA h g⁻¹ and 630 mA h g⁻¹ after 500 cycles at 0.2C and 0.5C, respectively. The performance was superior to that of using TiO_{2-x}@C-nanoparticles, TiO₂-nanoparticles and C-HS as the sulfur hosts. However, a higher content carbon additive of 20 wt% (*vs.* 10 wt%) was essential to build a conductive network when the sulfur loading was increased to 4.0 mg cm⁻². Learning from LIBs, to construct an efficient electrode, micrometre-scale particles need a smaller amount of binder and conductive additives than nanoparticles. In this regard, the authors further designed a hierarchical sulfur electrode composed of highly packed TiO hollow nanospheres and a carbon sheath, which simultaneously mitigated the issues of aggregated polysulfide dissolution and an inefficient conductive network in a thick sulfur electrode (GC-TiO@CHF, Fig. 5e-h).⁸⁰ The grape-like electrode was prepared *via* electrospinning SiO₂@TiO₂ into polyacrylonitrile (PAN), followed by annealing and etching steps. Using GC-TiO@CHF as the sulfur host, the microscale electrode exhibited a superior cycling stability for more than 400 cycles at a high sulfur loading of 5.0 mg cm⁻².

3.1.3 Other metal oxides. Besides TiO₂ and MnO₂ based hollow structures, a wide range of hollow-structured metal oxides or their compounds have been designed and used as sulfur hosts, from single-shelled hollow structures, such as hollow MoO₂ spheres,⁸¹ hollow NiCo₂O₄ nanofibers,⁸² jujube pit like Fe₃O₄-carbon composites,⁸³ CeO₂-carbon nanospheres,⁸² and V₂O₃ spheres,⁸⁴ to various double-shelled hollow structures, such as SnO₂@C nanospheres,⁸⁵ defect-rich Co₃O_{4-x} microspheres,⁸⁶ and NiO-NiCo₂O₄-carbon heterostructures,⁸⁷ and finally to multi-shelled hybrids, such as Fe-doped Co₃O₄ hollow microspheres⁸⁸ and V-decorated V₂O₅ microspheres (V/V₂O₅).⁸⁹ Integrating metal oxides with highly conductive hollow carbons and polymers and creating defects or oxygen vacancies in these metal oxides are the general and applicable approaches to make better hollow-structured metal oxide sulfur hosts for high-performance LSBs.

3.2 Metal sulfides

Different from most of the metal oxides, which are semiconductors, metal sulfides typically consist of a wide range of semimetal or metallic phases.⁹⁰ Furthermore, many metal sulfides exhibit strong LiPS interactions and efficient electrocatalysis for

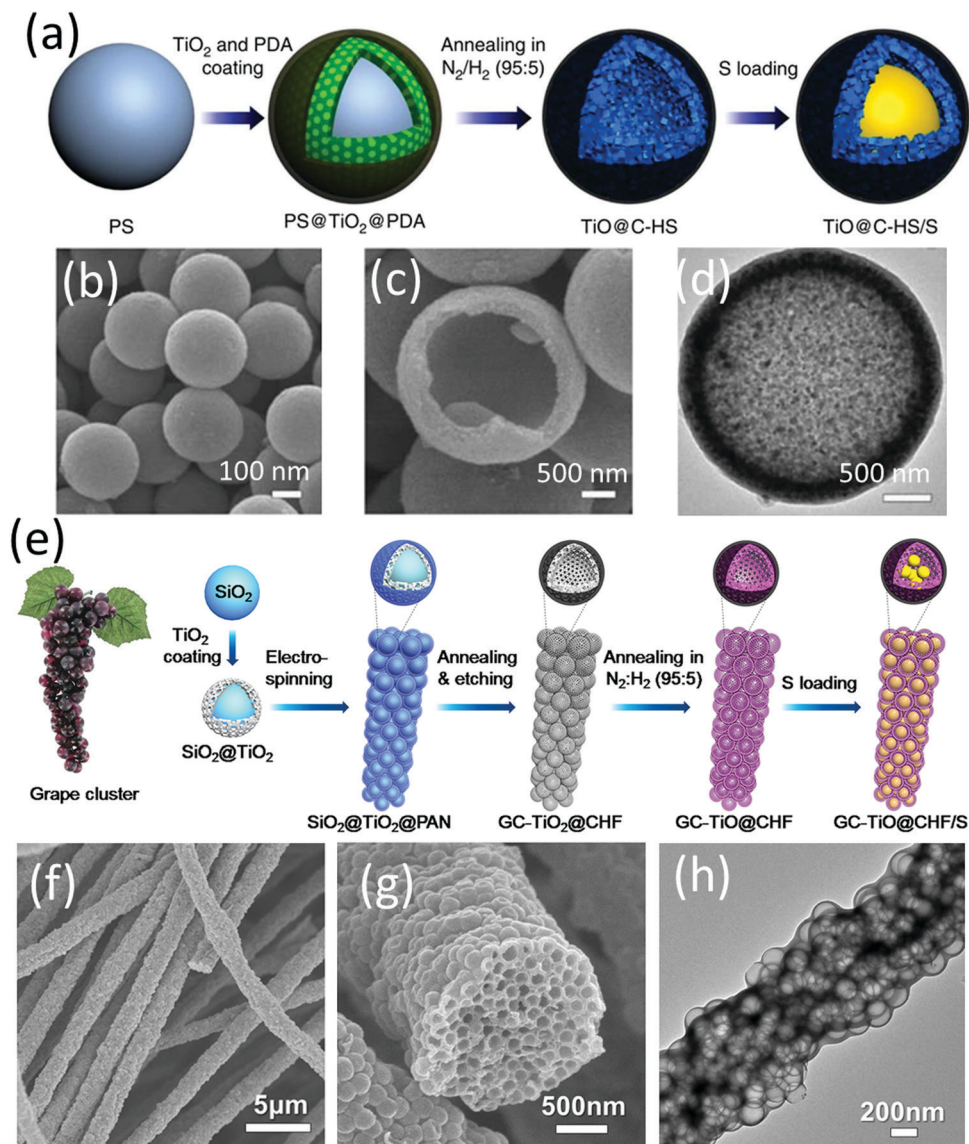


Fig. 5 (a) Schematic for TiO@C-HS/S fabrication, (b and c) SEM, and (d) TEM images of TiO@C-HS. Reproduced with permission.⁷⁹ Copyright 2016 Springer Nature. (e) Schematic for GC-TiO@CHF/S fabrication, (f and g) SEM, and (h) TEM images of GC-TiO@CHF. Reproduced with permission.⁸⁰ Copyright 2017 Elsevier.

the sulfur conversion reactions. Despite these desirable merits for being a sulfur host for LSBs, the list of metal sulfides used as sulfur hosts is obviously shorter than that of metal oxides.^{54,90} Among these hollow-structured metal sulfides, although not much, cobalt sulfides of different phases, such as CoS₂, Co₃S₄, and Co₉S₈, have gained particular attention. This is not only because of their good conductivity and superior electrocatalysis, but also benefited from the well-developed fabrication process using Co-based MOF/ZIF as the templates for the rational design of hollow structures. In this part, representative cobalt sulfide-based hollow sulfur hosts are summarized, with a focus on material design, preparation procedure and the electrochemical properties of the corresponding LSBs.

3.2.1 CoS₂. CoS₂, a stable and metallic mineral, exhibits efficient electrocatalysis for hydrogen evolution reaction and

oxygen reduction.^{91,92} Zhang and co-workers integrated micro-sized CoS₂ with graphene as a sulfur host for LSBs.⁹³ The CoS₂-electrolyte interface served as polysulfide adsorption and activation sites, which promoted the redox reactions of polysulfide and the energy efficiency of LSBs. However, the nonporous bulk CoS₂ particles unavoidably limited the exposed active sites to fully fulfil the properties of LiPS adsorption and redox acceleration. To make a better use of CoS₂, a brain-coral-like mesoporous hollow nitrogen-doped graphitic carbon structure decorated with the *in situ* grown CoS₂ nanoparticles (CoS₂@NGCNs) was rationally designed and prepared through a four-step process (Fig. 6a).⁹⁴ The hollow ZIF-67 spheres were firstly prepared using a room-temperature solution process (with CH₃OH and SO₄²⁻ ions). Secondly, the spherical Co@NGCNs was generated by a pyrolysis process of ZIF-67 under Ar/H₂ (95 : 5 by volume) at 650 °C. Thirdly,

the $\text{Co}/\text{CoS}_2@\text{NGCNs}$ was obtained by thermal sulfidation of the $\text{Co}@\text{NGCNs}$ by sulfur at 300 °C. $\text{CoS}_2@\text{NGCNs}$ was finally obtained after chemically etching out the Co of $\text{Co}/\text{CoS}_2@\text{NGCNs}$ using HCl solution, when mesopores with an average size of around 9 nm were created on the carbon shell. The stepwise morphology evolution and the formation mechanisms of the unique structure are demonstrated in Fig. 6a and b, respectively. The unique nanostructure exhibited multiple advantages when used as a sulfur host, including (a) the mesoporous surface acted as the conductive pathways and storeroom for sulfur species,

(b) the void space in the centre could accommodate sulfur, buffer the volume expansion and provide physical confinement to the polysulfide, and (c) the polar CoS_2 nanoparticles and nitrogen-doped carbon matrix could chemically immobilize polysulfide. $\text{CoS}_2@\text{NGCNs}$ presented the strongest LiPS adsorption ability among various control samples (Fig. 6c). Besides, $\text{CoS}_2@\text{NGCNs}$ -based LSBs achieved a higher sulfur utilization and lower polarization (Fig. 6d), and a positive shift in the reduction peaks and a negative shift of the oxidation peaks (Fig. 6e), suggesting

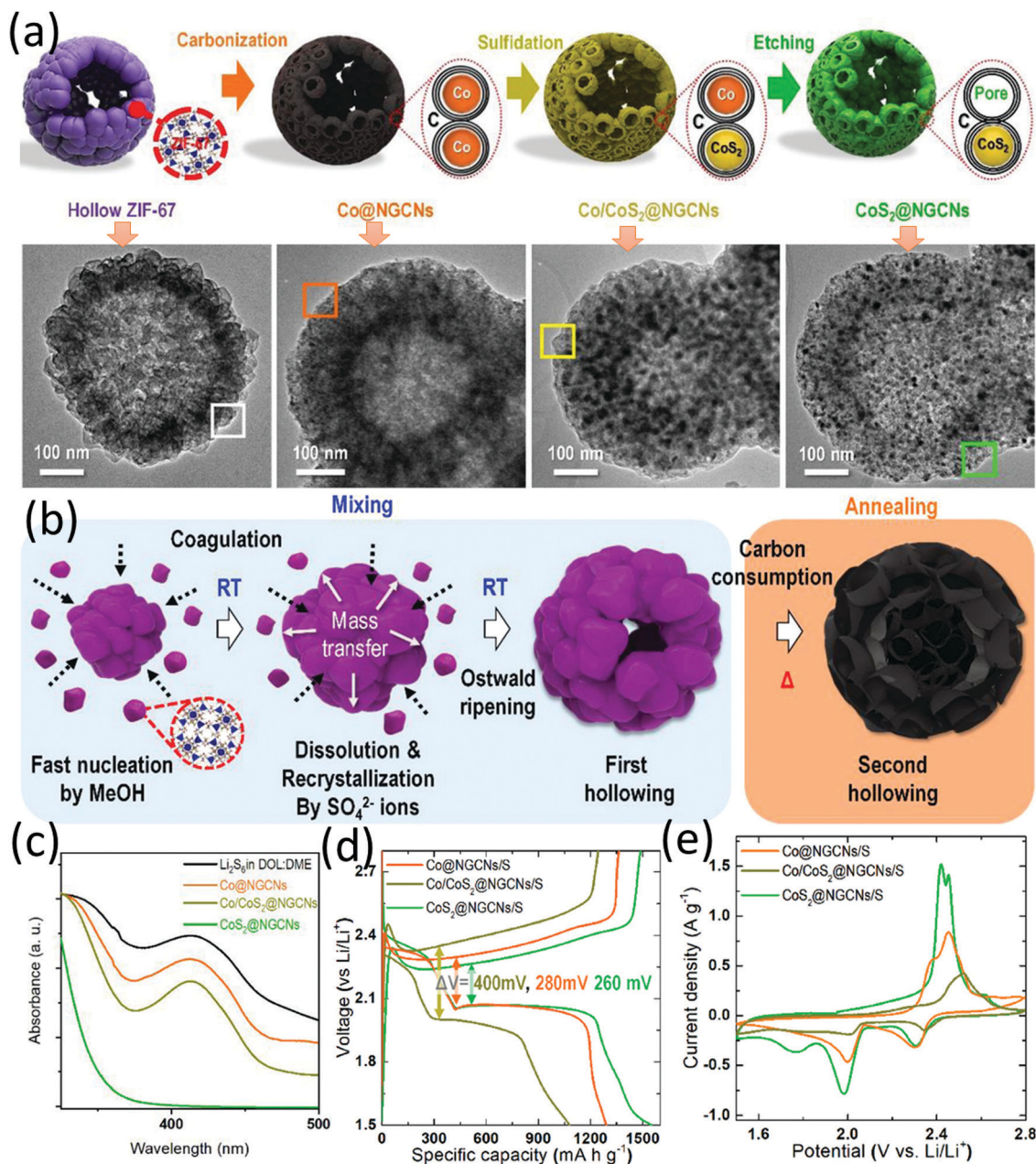


Fig. 6 (a) Schematic for the four-step fabrication of $\text{CoS}_2@\text{NGCNs}$, and TEM images of the corresponding intermediates, (b) proposed formation mechanisms of $\text{CoS}_2@\text{NGCNs}$, (c) UV-vis spectrum of the original Li_2S_6 , and the supernatant solutions after adsorption test using different adsorbents for 2 h, (d) galvanostatic discharge/charge profiles at 0.1C, and (e) CV profiles at 0.1 mV s^{-1} of hollow $\text{Co}@\text{NGCNs}$, $\text{Co}/\text{CoS}_2@\text{NGCNs}$, and $\text{CoS}_2@\text{NGCNs}$ based LSBs. Reproduced with permission.⁹⁴ Copyright 2019 Wiley-VCH.

the promoted redox kinetics of sulfur conversion. With a sulfur content of 75 wt%, the $\text{CoS}_2@\text{NGCNs}$ based sulfur electrode delivered a capacity of $900.3 \text{ mA h g}^{-1}$ after 100 cycles at 0.1C and 519 mA h g^{-1} after 300 cycles at 1C.

3.2.2 Co_3S_4 . Co_3S_4 presents a high conductivity of 330 S cm^{-1} at room temperature⁹⁵ and has been applied as sulfur hosts with various material integration and structure designs. Co_3S_4 polyhedra prepared using ZIF-67 as a self-sacrificing template⁹⁶ were integrated with activated carbon nanofibers (ACNF) and sulfur *via* vacuum filtration, forming a compact film electrode.⁹⁷ The compact sulfur electrode delivered high areal capacities of $5.25 \text{ mA h cm}^{-2}$ (701 mA h g^{-1}) and $7.47 \text{ mA h cm}^{-2}$ (550 mA h g^{-1}) after 100 cycles at 0.5C when the sulfur loading was 7.5 mg cm^{-2} and 13.5 mg cm^{-2} , respectively. The superior performance was attributed to the highly-conductive hollow Co_3S_4 polyhedra which not only chemically trapped polysulfide and allowed quick electron transport, but also provided sufficient void space for LiPS storage.

The catalytic effect of Co_3S_4 for the sulfur conversion reactions in LSBs was initially investigated by Zhang and co-workers,⁹⁸ inspired by the earlier reports that Co_3S_4 demonstrated 2–3 times higher electrocatalytic activity for oxygen reduction reactions than CoS_2 .⁹⁹ In Zhang's work, Co_3S_4 nanotubes were firstly synthesized by a two-step hydrothermal process. Specifically, the first hydrothermal process ($\text{CoCl}_2 \cdot 6\text{H}_2\text{O} + \text{CO}(\text{NH}_2)_2$) generated the nano-needle $\text{Co}(\text{CO}_3)_{0.35}\text{Cl}_{0.20}(\text{OH})_{1.10}$ with a diameter of around 80–90 nm, and the nano-needle $\text{Co}(\text{CO}_3)_{0.35}\text{Cl}_{0.20}(\text{OH})_{1.10}$ transformed into Co_3S_4 nanotubes due to the Kirkendall effect during the hydrothermal sulfuration process. $\text{Co}_3\text{S}_4@\text{S}$ was obtained by a melt-diffusion process. The $\text{Co}_3\text{S}_4@\text{S}$ cathode delivered an initial capacity of 517 mA h g^{-1} at 5C with 305 mA h g^{-1} left after 1000 cycles, corresponding to a capacity retention of 59% and a capacity decay rate of 0.041% per cycle. The Li_2S_4 adsorption test revealed the strong interaction between Co_3S_4 and LiPSs, and the CV results using symmetrical cells demonstrated the superior catalysis of Co_3S_4 on the conversion of Li_2S_6 .

A hybrid nanocomposite of carbon nanotube intercalated hollow Co_3S_4 nanoboxes ($\text{CNT}/\text{Co}_3\text{S}_4\text{-NBs}$ Fig. 7c) was prepared *via* a self-template method, which presented as an efficient sulfur host.¹⁰⁰ The composite of sulfur and $\text{CNT}/\text{Co}_3\text{S}_4\text{-NBs}$ ($\text{S}@\text{CNT}/\text{Co}_3\text{S}_4\text{-NBs}$, Fig. 7b and d) was prepared as shown in Fig. 7a. Specifically, ZIF-67 nanocubes were firstly *in situ* nucleated onto a $-\text{COOH}$ -functionalized CNT network ($\text{CNTs}/\text{ZIF-67}$), followed by solvothermal sulfuration and a subsequent carbonization process. The difference in diffusion rates of sulfur species and cobalt (Kirkendall effect) was the driving force for the formation of hollow $\text{Co}_3\text{S}_4\text{-NBs}$. Combining the three-dimensional CNT conductive network with the conductive, polar hollow Co_3S_4 nanoboxes, the hybrid exhibited superior charge transfer ability, and synergistic chemical immobilization and physical confinement of LiPSs. Owing to these properties, the $\text{S}@\text{CNT}/\text{Co}_3\text{S}_4\text{-NBs}$ cathode with a sulfur loading of 3.5 mg cm^{-2} delivered an initial areal capacity of $3.32 \text{ mA h cm}^{-2}$ (1012 mA h g^{-1}) at 0.2C, and $2.87 \text{ mA h cm}^{-2}$ (820 mA h g^{-1}) was maintained after 150 cycles. To uncover the mechanism of the superior performance, coin cells with different sulfur cathodes ($\text{S}@\text{CNT}/\text{Co}_3\text{S}_4\text{-NBs}$,

$\text{S}@\text{CNT}$, $\text{S}@\text{Co}_3\text{S}_4\text{-NBs}$) were disassembled after 30 cycles (0.2C) at the discharged state, and the cathodes were soaked in the electrolyte solvent for 4 h (Fig. 7e). The transparent colour of the $\text{S}@\text{CNT}/\text{Co}_3\text{S}_4\text{-NBs}$ containing solution and the corresponding UV-vis absorption spectra confirmed that the shuttle effect was efficiently suppressed by $\text{CNT}/\text{Co}_3\text{S}_4\text{-NBs}$.

More recently, a hierarchical carbon nanostructure composed of highly-dispersed Co_3S_4 nanoparticles, ZIF-67 and CNT sponge ($\text{CNTs}/\text{Co}_3\text{S}_4@\text{NC}$, Fig. 7f and h) was developed as a sulfur host.¹⁰¹ The $\text{S}@\text{CNTs}/\text{Co}_3\text{S}_4@\text{NC}$ (Fig. 7g) cathode exhibited impressive high-rate performance with 720 mA h g^{-1} retained after 1000 cycles at 5C (85% capacity retention) and a low voltage polarization (refer to the distance of the charge and discharge plateaus at half capacity). The impressive high-rate performance was attributed to the excellent catalytic capability of $\text{CNTs}/\text{Co}_3\text{S}_4@\text{NC}$. As revealed by the CV curves of the symmetric cells, sharp peaks with narrow separation was obtained using $\text{CNTs}/\text{Co}_3\text{S}_4@\text{NC}$ as the electrodes (Fig. 7i), compared to the much broader peaks with widened separation observed in the case of using $\text{CNTs}/\text{Co}@\text{NC}$ and CNTs (Fig. 7j).

3.2.3 Co_8S_9 . Metallic Co_8S_9 with a high conductivity of 290 S cm^{-1} at room temperature¹⁰² is among the most widely studied metal sulfides in LSBs. Nazar *et al.* have demonstrated the dual-interaction of polysulfide with graphene-like Co_8S_9 nanosheets ($\text{S}_2^{2-}-\text{Co}^{\delta+}$ and $\text{Li}^+-\text{S}^{\delta-}$) through both theoretical calculation and spectroscopic studies.¹⁰³ It is known that the polar-polar interaction between the host and polysulfide is generally based on monolayered chemical adsorption.¹⁰⁴ Despite the strong chemical interaction and large exposed adsorption sites of the polar host materials, it might be difficult to trap all LiPSs in a long run relying on two-dimensional nanosheets.²⁸ In this regard, a highly-conductive honeycomb-like spherical structure assembled from hollow Co_9S_8 tubes was designed as a sulfur host. The well-aligned hollow tubes allow a fast ion transfer and provide a buffer room for the volume expansion of the sulfur electrode during the lithiation process, and the polar Co_9S_8 effectively bonds the polysulfide for long-term cycling.¹⁰⁵ The two-step fabrication process is shown in Fig. 8a. The first step is the preparation of the urchin-like precursor with a diameter of around $10 \mu\text{m}$ (Fig. 8b), which was constructed from $\text{Co}(\text{CO}_3)_{0.5}\text{OH} \cdot 0.11\text{H}_2\text{O}$ nanotubes with a diameter of about 100 nm (Fig. 8c and d). The solid nanorods transformed into hollow nanotubes due to the anion exchange. The honeycomb-like Co_9S_8 was obtained after the reaction between Na_2S and the as-prepared precursor under a hydrothermal process. The $\text{S}@\text{Co}_9\text{S}_8$ composite with sulfur infiltrated into the hollow Co_9S_8 tubes (Fig. 8e) was obtained through the melt-diffusion process. Compared to the pure sulfur electrode, the $\text{S}@\text{Co}_9\text{S}_8$ cathode exhibited a higher capacity, a lower voltage polarization and sharper redox peaks of the CV curves. In a long-term cycling process, the $\text{S}@\text{Co}_9\text{S}_8$ cathode delivered a capacity of $756.6 \text{ mA h g}^{-1}$ after 600 cycles at 1C, corresponding to a capacity degradation rate of 0.026% per cycle. Based on a similar sulfur host design methodology, $\text{Co}_9\text{S}_8/\text{C}$ nanopolyhedra were prepared *via* sulfuration of ZIF-67 nanopolyhedra using thioacetamide (TAA), followed by an annealing process at $350 \text{ }^\circ\text{C}$ in a N_2 atmosphere.¹⁰⁶ Large internal cavities were created due to the



Fig. 7 (a) Schematic for S@CNTs/Co₃S₄-NBs preparation, (b) SEM image of S@CNTs/Co₃S₄-NBs, TEM images of (c) CNTs/Co₃S₄-NBs, and (d) S@CNTs/Co₃S₄-NBs, (e) UV-vis absorption spectra of the electrolyte solvent (DOL/DME) with the soaked cycled cathode: (1) S@CNTs/Co₃S₄-NBs, (2) S@Co₃S₄-NBs and (3) S@CNTs. The inset photograph compares the colour of the solutions containing the corresponding cathodes. Reproduced with permission.¹⁰⁰ Copyright 2017 American Chemical Society. TEM images of (f) CNTs/Co₃S₄@NC and (g) S@CNTs/Co₃S₄@NC, (h) SEM image of CNTs/Co₃S₄@NC, and CV curves of the symmetric cells with and without Li₂S₆ at 10 mV s⁻¹ using (i) CNTs/Co₃S₄@NC, (j) CNTs/Co@NC and CNTs as the electrodes. Reproduced with permission.¹⁰¹ Copyright 2019 American Chemical Society.

different ion diffusion rates of sulfur ions in TAA and cobalt ions in ZIF-67. Benefitting from the large void space and the polar Co₉S₈/C shell that provided both spatial and chemical confinement of polysulfide, the Co₉S₈/C based sulfur electrode presented a capacity of 560 mA h g⁻¹ after 1000 cycles at 2C, corresponding to a low capacity rate of 0.041% per cycle.

More recently, a double-shelled hollow polyhedron composed of a core of cobalt nanoparticles encapsulated in nitrogen-doped carbon, an inner Co₉S₈ shell, and an outer nitrogen-doped porous carbon layer (Co/NC@Co₉S₈/NPC, Fig. 8f and g) was developed as a sulfur host.¹⁰⁷ Compared to Co/NC@Co₉S₈ and the hollow Co₉S₈/NPC, the Co/NC@Co₉S₈/NPC presented an enhanced

chemisorption ability to LiPSS and catalytic activity to sulfur conversion reactions. The author systematically investigated the formation process of the Co/NC@Co₉S₈/NPC. The imidazolium-based ionic polymer (ImIP)-encapsulated ZIF-67 (ZIF-67@ImIP), used as the core-shell precursor, was firstly prepared, followed by refluxing the precursor in thioacetamide (TAA) solution, during which the inner CoS shell was generated based on the reaction of TAA and ZIF-67, generating the yolk-double-shelled ZIF-67@CoS/ImIP. The final product was obtained after annealing the intermediate in a N₂ atmosphere at 600 °C, during which the amorphous CoS converted to Co₉S₈, the ZIF-67 converted to Co/NC nanodots, and ImIP converted to porous nitrogen-doped carbon

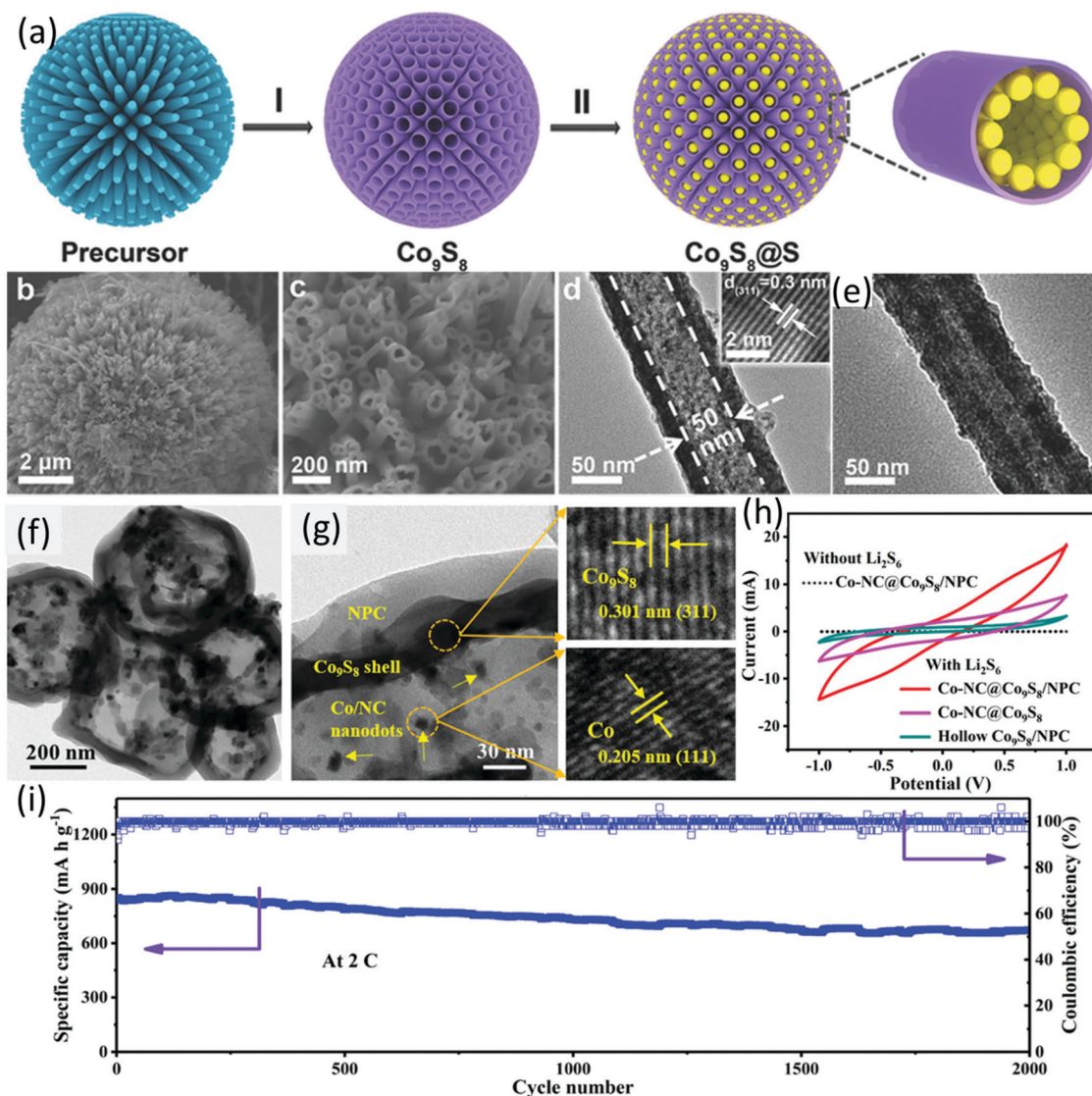


Fig. 8 (a) Schematic for S@Co₉S₈ preparation, (b and c) SEM images, (d) TEM image of honeycomb-like Co₉S₈, and (e) TEM image of S@Co₉S₈. Reproduced with permission.¹⁰⁵ Copyright 2018 Wiley-VCH. (f) TEM and (g) HRTEM images of Co-NC@Co₉S₈/NPC, and (h) CV profiles of the symmetric cells using different hosts as electrodes, (i) long-term cycling performance of Co-NC@Co₉S₈/NPC-S at a sulfur loading of 1.8 mg cm⁻². Reproduced with permission.¹⁰⁷ Copyright 2020 Wiley-VCH.

simultaneously. To verify the catalytic effect of the hosts, symmetrical cells composed of identical electrode (the hosts) and Li₂S₆ catholyte were assembled. CV measurements using the symmetrical cell presented the redox current trend of Co-NC@Co₉S₈/NPC > Co-NC@Co₉S₈ > Co₉S₈@NPC, suggesting the superior catalytic activity of NC@Co₉S₈/NPC (Fig. 8h). Benefiting from the elaborate double-shelled structure and the intrinsic material chemistry, the sulfur electrode using Co/NC@Co₉S₈/NPC as the sulfur host (Co/NC@Co₉S₈/NPC-S) maintained a superior capacity of 670 mA h g⁻² after 2000 cycles at 2C, corresponding to a low capacity decay rate of 0.011 each cycle (Fig. 8i). Moreover, both of the sulfur cathode and lithium anode remained intact without yellow-coloured LiPSs on their surface, suggesting that the shuttle effect was effectively suppressed. Even without LiNO₃ in the electrolyte, the Co/NC@Co₉S₈/NPC-S electrode exhibited a low

capacity decay rate of 0.032% for 500 cycles at 2C. At a high sulfur loading of 4.5 mg cm⁻², Co/NC@Co₉S₈/NPC-S delivered an initial capacity of 946 mA h g⁻¹, which was maintained at 806 mA h g⁻¹ after 500 cycles at 0.5C.

3.2.4 Other metal sulfides. Besides the above-mentioned cobalt sulfides which were prepared using ZIF-67 as the template, there are other hollow-structured metal sulfides applied as sulfur hosts using SiO₂ spheres as the hard templates. For example, NiS-nanoparticle decorated spherical hollow carbon was prepared with SiO₂ spheres as the template.¹⁰⁸ SiO₂ spheres (450 nm) were firstly prepared, then SiO₂@Ni-silicate@RF spheres (530 nm) were generated by adding nickel nitrate solution and resorcinol formaldehyde resin (RF). After annealing the as-obtained product in a N₂ atmosphere, SiO₂@Ni@C spheres were obtained. NiS@C-HSS were generated *via* the reaction between SiO₂@Ni@C and

Na₂S, when Ni was converted to NiS nanoparticles and SiO₂ was etched away by OH⁻ generated from the hydrolysis of S²⁻ ions. LSBs with NiS@C-HSs as the sulfur host delivered a capacity of 695 mA h g⁻¹ after 300 cycles at 0.5C, corresponding to a low capacity degradation rate of 0.013% per cycle. A hollow carbon structure with sulfur-deficient MoS₂ nanosheets anchored on the inner side (MoS_{2-x}/HMC) was achieved, where SiO₂ spheres were used as the templates for the preparation of HMC.¹⁰⁹ MoS₂ nanosheets were grown on the HMC (MoS₂/HMC) *via* a hydrothermal process. The sulfur-deficient MoS_{2-x} was generated by further annealing the as-obtained MoS₂/HMC in H₂/Ar (5/95) flow. LSBs using MoS_{2-x}/HMC as a sulfur host delivered a capacity of 754 mA h g⁻¹ after 100 cycles at 0.2C, corresponding to a capacity retention of 70%, which was higher than those of MoS₂/HMC (58.5%) and HMC (51.1%). The enhanced performance was attributed to sulfur vacancies which promoted the chemical interaction of MoS₂ and polysulfide. Besides creating sulfur vacancies, taking advantage of metallic 1T-MoS₂ is another approach to enhance the performance of MoS₂ as a sulfur host. A porous graphene/MoS₂ hybrid with N-doped graphene wrapped 1T-MoS₂ nanotube was synthesized as a sulfur host.¹¹⁰ The nanotube was constructed from vertically oriented few-layered MoS₂, which self-assembled through a spray-drying approach. Benefiting from the strong LiPS adsorption and efficient catalytic activity of 1T-MoS₂ and the graphene conductive network, the S-graphene/MoS₂ cathode exhibited a high capacity of 1214 mA h g⁻¹ after 200 cycles at 0.2C.

It is noticed that most of the metal sulfides used in LSBs are mono-metal sulfides. Inspired by the outstanding electrochemical properties of NiCo₂S₄ for oxygen reduction and hydrogen evolution reactions^{111,112} and other energy storage systems,^{113,114} Xia and co-workers initially designed NiCo₂S₄ yolk-shell hollow spheres as the sulfur host.¹¹⁵ The NiCo₂S₄ yolk-shell hollow spheres were synthesized *via* sulfurization of NiCo-glycerate spheres using thioacetamide (TAA) under a hydrothermal process. The S/NiCo₂S₄ electrode presented a low capacity rate of 0.074% per cycle for 500 cycles at 0.5C. Compared to Ni₃S₄ and Co₃S₄ with a similar morphology, NiCo₂S₄ yolk-shell hollow spheres exhibited a high current density in the CV curves measured by symmetrical cells, demonstrating the most efficient catalytic activity to sulfur conversion reactions.

Compared to the abundant hollow metal oxides family, fewer hollow metal sulfides have been developed for sulfur hosts, while significant progress has been made in using metal sulfides for other energy storage systems and energy conversion.^{116,117} The impressive electrochemical performance of the hollow metal sulfide-based LSBs encourages more research efforts on the design and investigation of hollow metal sulfides for LSBs.

3.3 Metal nitrides

Metal nitrides typically present a better conductivity than their metal oxide counterparts, which is highly desirable when used as sulfur hosts.¹¹⁸ Many metal oxides can be readily transformed into relevant metal nitrides through an ammonization process, with the morphology of the metal oxide well inherited by metal nitrides, and *vice versa*.¹¹⁹ Most of the hollow metal

nitride sulfur hosts are obtained *via* annealing the corresponding metal oxides in a NH₃ atmosphere at high temperature.

3.3.1 TiN. The conductivity of TiN (from 4 × 10³ to 5.5 × 10⁵ S cm⁻¹) is comparable to those of metals, which is highly desirable for a sulfur host.^{119,120} Goodenough *et al.* have initially investigated the electrochemical properties of LSBs using mesoporous TiN as the sulfur host, revealing strong chemical interactions between TiN and LiPSs.¹²¹ Later, the chemical interaction and catalytic mechanisms of TiN have been confirmed by several other groups.^{122,123} TiN of different morphologies can be readily synthesized by annealing TiO₂ with desirable morphologies.^{124,125} For example, a hollow TiN nanosphere was synthesized by annealing a hollow TiO₂ nanosphere in ammonia gas, and the S-TiN cathode with a high sulfur loading of 3.6 mg cm⁻² exhibited a capacity of 710 mA h g⁻¹ after 100 cycles at 0.2C.¹²⁶ The enhanced electrochemical performance was attributed to the highly conductive TiN shells, which provided strong chemical interactions with polysulfide, and the void space in the hollow spheres, which buffered the volume expansion of the sulfur electrode during the discharge process. Due to enhanced conductivity and efficient electrocatalysis of TiN, these TiO₂-derived TiN hollow structures when used as sulfur hosts typically allowed superior electrochemical performance to that using the original TiO₂.^{127,128} Hollow porous TiN tubes were prepared *via* ammonizing the pre-synthesized hollow TiO₂ tubes, and the TiN-sulfur composite (TiN/S) was obtained through the melt-diffusion process.¹²⁹ Owing to the high metallic conductivity of TiN and its high affinity for LiPSs, the TiN/S cathode delivered a capacity of 890 mA h g⁻¹ after 100 cycles at 0.5C and 740 mA h g⁻¹ after 450 cycles at 1C.

3.3.2 VN. Li and co-workers have demonstrated the strong LiPS anchoring effect and fast LiPS conversion enabled by using VN/Graphene composites as the current collector for LSBs.¹³⁰ To prepare a sulfur host that meets the requirements of high conductivity, sufficient void space for sulfur accommodation, volume buffering and LiPS confinement, strong chemical interactions with LiPSs, and efficient electrocatalytic activity for sulfur conversion, porous-shell VN nanobubbles were designed and synthesized through an organometallic conversion and a subsequent thermal nitridation process (Fig. 9a).¹³¹ Specifically, V₂O₅ nanobubbles (V₂O₅-NBs) were firstly prepared with carbon nanospheres as the sacrificial templates. VN-NBs (Fig. 9b) were then obtained after a heat treatment of the V₂O₅-NBs in NH₃/Ar flow. The infiltration of sulfur into the VN-NBs (S@VN-NBs, Fig. 9c) was achieved *via* a melt-diffusion process. The S@VN-NBs cathode with a sulfur loading of 1.2 mg cm⁻² maintained a capacity of 837 and 704 mA h g⁻¹ after 1000 cycles at 1 and 2C, corresponding to a capacity decay rate of 0.024% and 0.027%, respectively. When the sulfur loading was increased to 3.3, 5.4 and 6.8 mg cm⁻², the S@VN-NBs cathode delivered a capacity of 951, 799, and 563 mA h g⁻¹ after 200 cycles at 0.5C, respectively. The areal capacity of S@VN-NBs with 5.4 mg cm⁻² was among the best reported at that time, suggesting that the rational design of ordered nanostructures was an efficient approach to achieve high-performance LSBs. With a similar material design methodology for a superior sulfur host, a hybrid structure of



Fig. 9 (a) Schematic for preparation of VN-NBs and S@VN-NBs and the delithiation/lithiation process, TEM images of (b) VN-NBs and (c) S@VN-NBs, and (d) cycling capabilities of S@VN-NBs cathodes with different sulfur loadings at 0.5C. Reproduced with permission.¹³¹ Copyright 2017 American Chemical Society. (e) Cycling performance of VN/S, Co-VN/S, and Co-VN@C/S at 1C; inset: schematic illustration for Co-VN@C/S fabrication. Reproduced with permission.¹³² Copyright 2018 American Chemical Society.

cobalt-doped VN yolk-shell nanosphere encapsulated in carbon (Co-VN@C) was designed through a template-free solvothermal process with a subsequent nitridation step (Fig. 9e inset).¹³² Benefiting from the synergistic effect of cobalt, vanadium nitride, and carbon matrix, Co-VN@C/S exhibited a superior rate performance and long-term cycling stability compared to Co-VN@/S and VN/S (Fig. 9e). Even with a high sulfur loading of 4.07 mg cm⁻², Co-VN@C/S delivered a high capacity of 830 mA h g⁻¹ after 100 cycles at 0.2C.

Despite these attractive properties of metal nitrides and the well-known merits of hollow structures, the hollow-structured

metal nitrides developed for sulfur hosts are fewer than the hollow-structured metal sulfides. This may be due to the difficulty and high-cost for the synthesis of metal nitride hollow structures. More efforts are desirable for the development of facile, efficient and cost-effective approaches to fabricate hollow-structured metal nitrides.

3.4 Metal carbides

Nazar and co-workers are the pioneers who used the delaminated MXene phase (the early-transition-metal carbides or carbonitrides) as sulfur hosts.¹³³ Two-dimensional Ti₂C and Ti₃C₂ nanosheets

were demonstrated as efficient sulfur hosts, which enabled stable cycling performance of LSBs.¹³⁴ Coupling the polar metallic metal carbide with the hollow carbon spheres, a hybrid hollow structure with double-shelled carbon with encapsulated Mo_2C nanoparticles ($\text{Mo}_2\text{C}/\text{C}@\text{C}$) was developed as the sulfur host.¹³⁵ The inner carbon shell was mainly used for encapsulation, while the outer carbon layer was for surface modification, thus leading to a better battery performance than that with a single carbon shell ($\text{Mo}_2\text{C}/\text{C}$) host.

A hybrid hollow structure with MoSe_2 and Mo_2C encapsulated into hollow F-doped carbon fibers ($\text{MoSe}_2@\text{FC}@\text{Mo}_2\text{C}$, Fig. 10a) was synthesized through electrospinning (ZIF-67 was incorporated into the fibre precursor), followed by carbonization and a subsequent hydrothermal process.¹³⁶ $\text{MoSe}_2@\text{FC}@\text{Mo}_2\text{C}$ allowed stepwise electrocatalysis of different sulfur species with F-doped carbon fibers (FC) accelerating the transformation of S_8 and Li_2S_4 , while the MoSe_2 and Mo_2C promoted the conversion between Li_2S_4 and Li_2S . Benefitting from these advantages, the

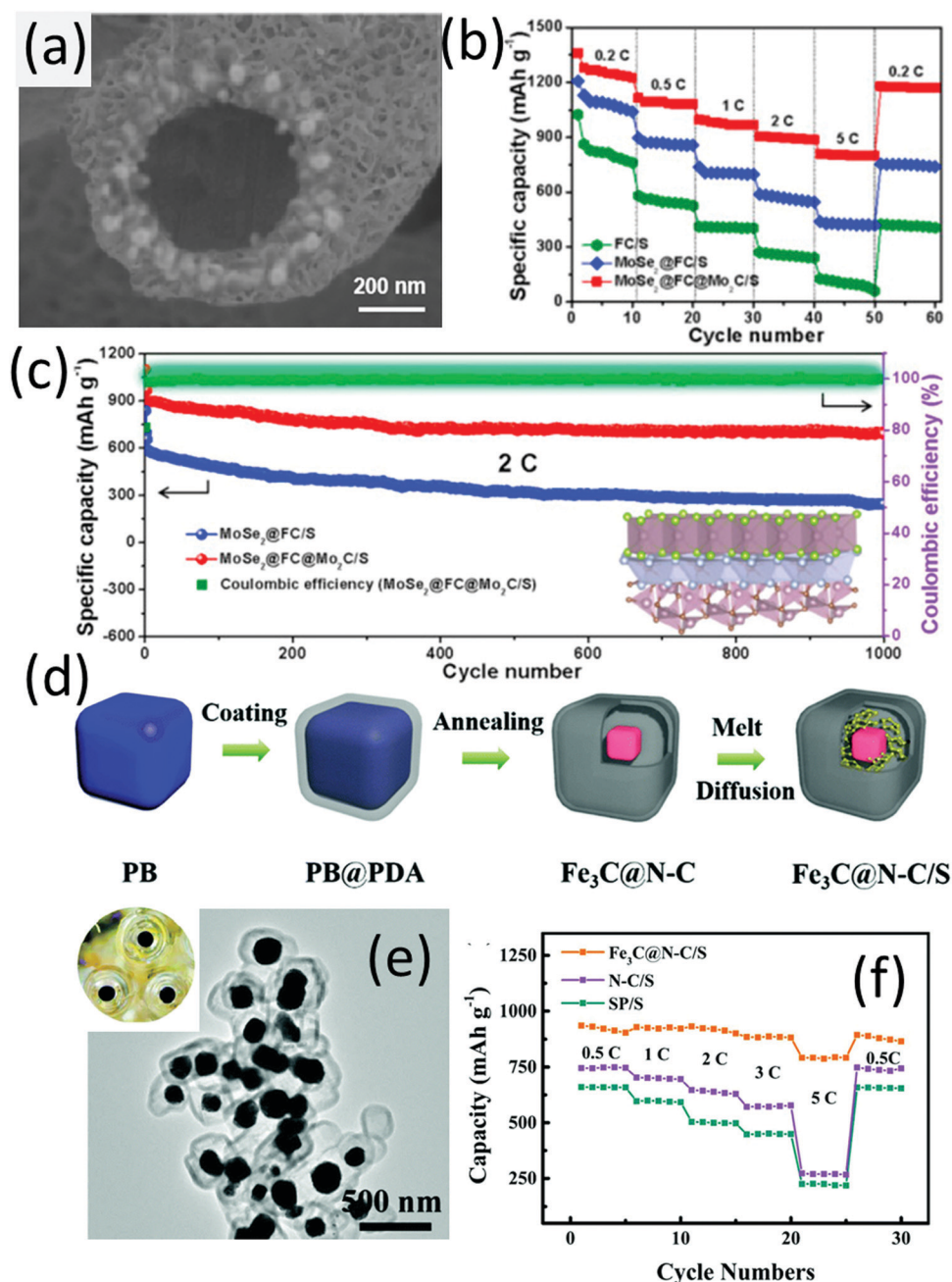


Fig. 10 (a) SEM image of $\text{MoSe}_2@\text{FC}@\text{Mo}_2\text{C}$, (b) rate-performances of LSBs using different sulfur hosts, and (c) long-term cycling of the $\text{MoSe}_2@\text{FC}@\text{Mo}_2\text{C}/\text{S}$ cathode. Reproduced with permission.¹³⁶ Copyright 2020 Elsevier. (d) Schematic for frogspawn-like hollow $\text{Fe}_3\text{C}@\text{N}-\text{C}$ preparation, (e) TEM image of $\text{Fe}_3\text{C}@\text{N}-\text{C}$; the inset is the photo of frogspawn, (f) rate-performance of $\text{Fe}_3\text{C}@\text{N}-\text{C}/\text{S}$, super P/S, and N-C/S (nitrogen-doped carbon). Reproduced with permission.¹³⁷ Copyright 2019 the Royal Society of Chemistry.

MoSe₂@FC@Mo₂C/S cathode exhibited a high capacity of 802 mA h g⁻¹ at 5C, which was superior to those of FC/S and MoSe₂@FC/S (Fig. 10b). Under a challenging electrolyte/sulfur ratio of 5 mL g⁻¹ and a high sulfur loading of 5.5 mg cm⁻², MoSe₂@FC@Mo₂C/S presented a low capacity decay rate of 0.029% each cycle for 1000 cycles at 2C (Fig. 10c).

Different from most of the hybrids where metal compounds are generally anchored on either the outer surface or the inner surface of the carbon shells, a frogspawn-like structure composed of a nitrogen-doped carbon shell and a Fe₃C particle core (Fe₃C@N-C, Fig. 10e) was designed and presented as an efficient sulfur host.¹³⁷ The Fe₃C@N-C was obtained by annealing polydopamine (PDA) coated cubic Prussian blue (PB), when the metal-like Fe₃C generated from the PB precursor was encapsulated in nitrogen-doped carbon shells derived from PDA (Fig. 10d). Fe₃C cores acted as a centre for polysulfide trapping, while the void space provided sufficient room to buffer the volume expansion of sulfur during discharge. The Fe₃C@N-C/S electrode delivered an impressive high-rate capacity of 792 mA h g⁻¹ at 5C (Fig. 10f). The electrode maintained a capacity of 586 mA h g⁻¹ after 400 cycles at 0.5C, corresponding to a low capacity decay rate of 0.08% per cycle.

The number of hollow-structured metal carbides applied as sulfur hosts are relatively limited, possibly due to the high-temperature annealing process, which is essential for the synthesis of metal carbides but detrimental for the hollow structure. To prepare highly-efficient sulfur hosts, integrating the metallic and polar metal carbides with hollow carbons should be a solution.

3.5 Metal phosphide

Wang and co-workers are among the pioneering researchers who applied metal phosphides as sulfur host materials and investigated their chemical interaction with LiPSs and electrocatalysis for sulfur conversion in LSBs.¹³⁸ They initially proposed the surface oxidation-induced polysulfide-binding mechanism which is generally applicable to a wide range of transition metal phosphides.¹³⁹ A sulfur cathode containing CNT supported CoP nanoparticles (CoP-CNT) with a high sulfur loading of 7.0 mg cm⁻² maintained a high areal capacity of 5.6 mA h cm⁻² for 200 cycles.¹³⁹ When MoP-CNT was used as the host material, the sulfur cathode realized a stable areal capacity of 5.0 mA h cm⁻² under a lean electrolyte condition of 4 mL_E g_S⁻¹ (electrolyte/sulfur).¹⁴⁰ To integrate the advantages of transition metal phosphides (for LiPSs immobilization and conversion) with the hollow structure (to carry sulfur, buffer the volume expansion and confine LiPSs), a Ni₂P yolk-shell structure (Ni₂P-YS) was prepared *via* a multistep process (Fig. 11a). Ni-yolk-shell (Ni-YS) was first prepared with a one-pot solvothermal process. The morphology evolution of the Ni-YS along with the solvothermal process (3, 6, 9, 12 h) is shown in Fig. 11b–e, revealing the stepwise hollowing out of the yolk-shell structure (Fig. 11f). Ni₂P-YS composed of a core with a diameter of 276 nm and a spherical shell with a diameter of 855 nm (Fig. 11g and h) was obtained by annealing Ni-SY (glycerol) in PH₃/Ar flow. The Ni₂P-YS based sulfur cathode delivered an impressive high-rate performance with a capacity of 439 mA h g⁻¹ at 10C, which was maintained at 394 mA h g⁻¹ after 1000 cycles at 5C (Fig. 11i).¹⁴¹ It was revealed that the

conductive polar Ni₂P not only facilitated the ion transportation but also improved the polysulfide nucleation. Besides, the yolk-shell structure could accommodate sulfur species and provided buffer room for the correlated volume expansion.

A hybrid structure composed of CoP nanoparticles, hollow carbon polyhedra and carbon nanotube (CoP@HPCN) was prepared using ZIF-8 and ZIF-67 as the templates and metal ion sources. After a successive carbonization, oxidization and phosphorization process, Co@HPCN, Co₃O₄@HPCN, and the final CoP@HPCN were generated, respectively.¹⁴² The CoP@HPCN/S cathode with a high sulfur loading of 3.7 mg cm⁻² presented a low self-discharge constant of 0.03% per day for 60 days. This was mainly attributed to the high porosity and cavity of the hollow architecture, which can accommodate sulfur and buffer its volume expansion, and the uniformly dispersed CoP nanoparticles, which not only chemically immobilized LiPSs but also acted as an electrocatalyst to promote the redox kinetics of sulfur species. More recently, Ru–Mo₄P₃ nanoparticle-decorated hollow carbon spheres (HCS-Ru–Mo₄P₃) were demonstrated as good sulfur hosts, and the corresponding S/HCS-Ru–Mo₄P₃ cathode achieved a high capacity of 660 mA h g⁻¹ at 4C and a high areal capacity of 5.6 mA h cm⁻² after 50 cycles at a sulfur loading of 6.6 mg cm⁻².¹⁴³ The performance was among the best of LSBs using transition metal phosphides as the sulfur host materials. It was revealed that Ru induced the phase transformation from MoP to Mo₄P₃, which possessed higher electrocatalytic activity towards sulfur conversion than RuP₂ and MoP. The synergistic effect of Mo₄P₃ and Ru made Ru–Mo₄P₃ highly active sites for LiPS adsorption and conversion. Combining the advantages of the hollow carbon structure as a sulfur carrier, the S/HCS-Ru–Mo₄P₃ cathode achieved superior electrochemical properties.

Transition metal phosphides have long been used as efficient catalysts for photoelectrochemical, hydro-processing.^{144,145} The application of transition metal phosphides for LSBs is still in its infancy. More efforts on the preparation and application of novel metal phosphides for LSBs are desirable.

3.6 Metal hydroxides

Metal hydroxides, such as Co(OH)₂, have been demonstrated as efficient stabilizers for high-performance LSBs, presenting good capability to suppress the shuttle effect of LiPSs.¹⁴⁶ Huang and co-workers demonstrated that a drastically enhanced performance (with negligible capacity decay for 500 cycles) was achieved by encapsulating a conventional S₈-carbon black composite (S₈@CB) in nickel nitrate hydroxide, Ni₃(NO₃)₂(OH)₄.¹⁴⁷ The Ni₃(NO₃)₂(OH)₄ layer not only served as a physical barrier to trap LiPSs, but also reacted with lithium to generate an ion-conductive, polar/hydrophilic-rich layer for ion transportation and LiPS trapping. These results suggest metal hydroxides are potential sulfur hosts to achieve high-performance LSBs. Layered double hydroxides (LDHs) have long been applied as catalysts for a wide range of areas, such as oxygen evolution reactions¹⁴⁸ and photo-degradation of organic waste.^{149,150} Lou *et al.* designed various hollow-structure LDHs as sulfur host materials, and investigated the electrochemical properties of S-LDHs composites.

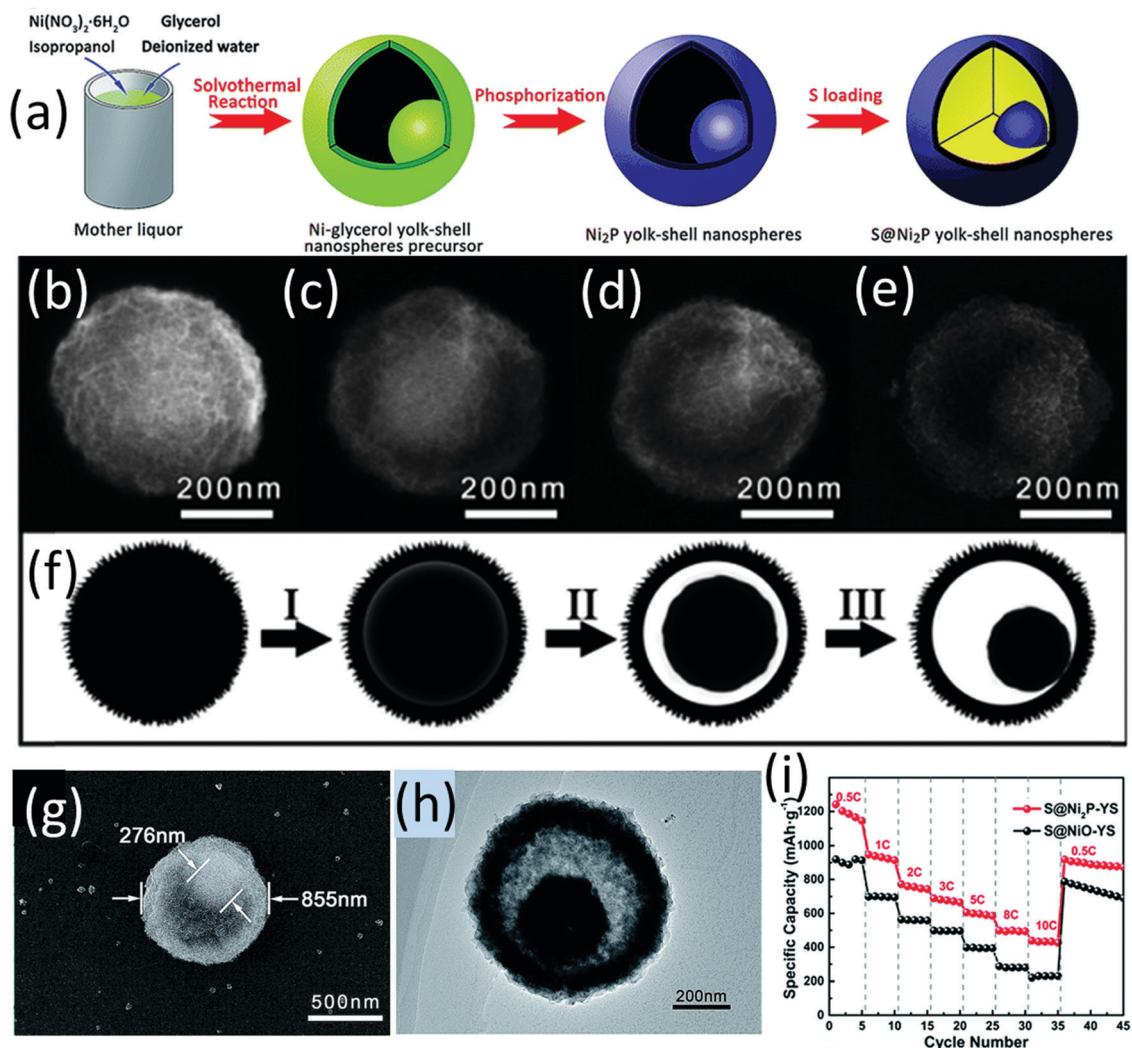
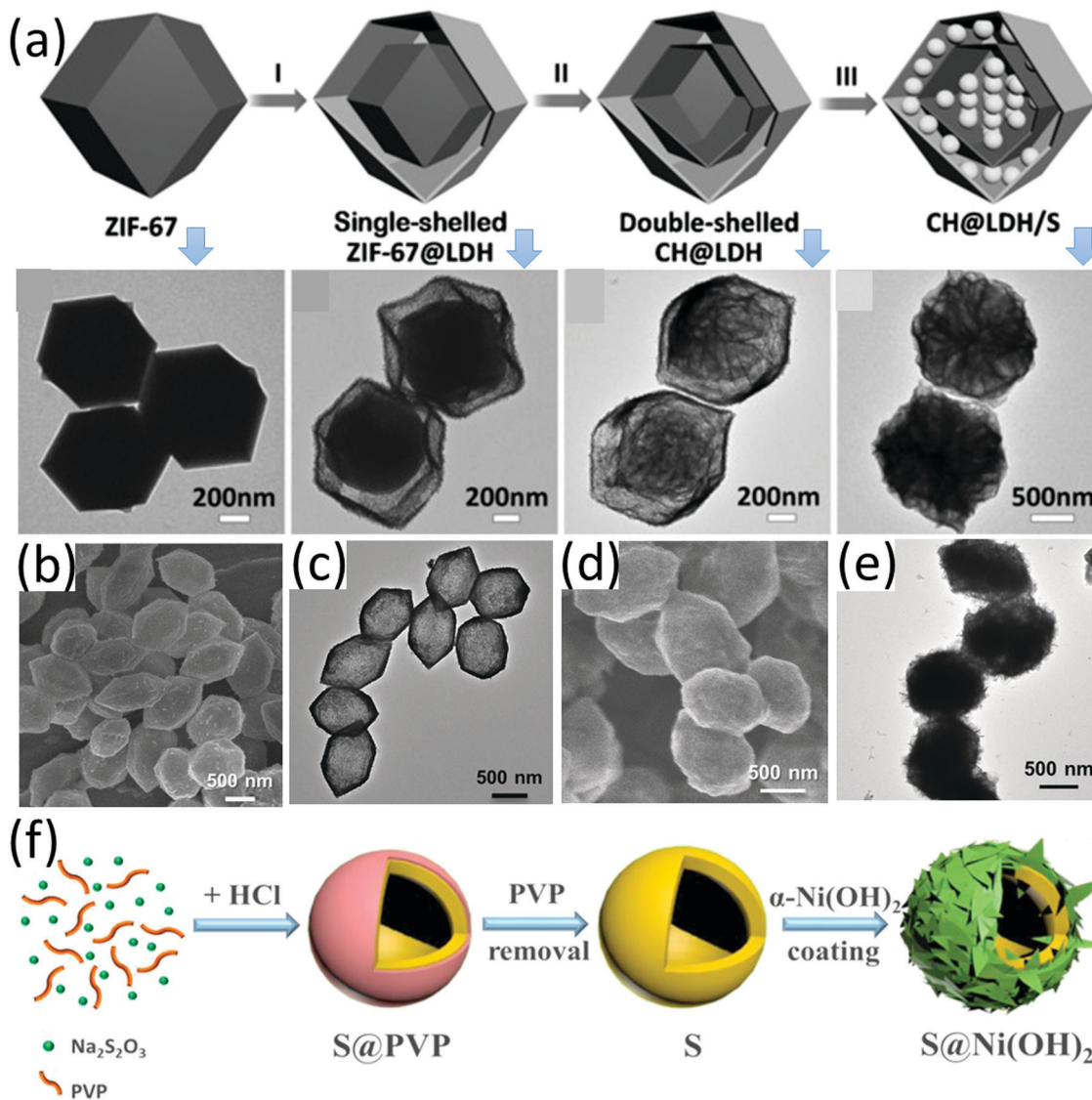


Fig. 11 (a) Schematic for the preparation of hollow yolk-shell $\text{Ni}_2\text{P-YS}$ and $\text{S@Ni}_2\text{P-YS}$ composites, SEM images of Ni-YS precursor/intermediates generated at different stages of the solvothermal process: (b) 3 h, (c) 6 h, (d) 9 h, and (e) 12 h, (f) schematic for the stepwise formation of the Ni-glycerate yolk-shell structure, (g) SEM, and (h) TEM of NiP-YS, (i) rate performance of $\text{S@Ni}_2\text{P-YS}$ and S@NiO-YS . Reproduced with permission.¹⁴¹ Copyright 2017 the Royal Society of Chemistry.

For example, double-shelled nanocages composed of a layered double hydroxide outer shell and a $\text{Co}(\text{OH})_2$ inner shell were prepared (CH@LDH), which could not only accommodate a high sulfur content of 75 wt%, but also suppress the diffusion of polysulfide *via* a self-functionalized surface as chemical adsorption sites, maximizing the advantages of the hollow structure as a sulfur host.¹⁵¹ When used as a sulfur host, the CH@LDH -based sulfur electrode with a high sulfur loading of 3.0 mg cm^{-2} delivered an initial capacity of 747 mA h g^{-1} at 0.5C, which was maintained at 491 mA h g^{-1} after 100 cycles. The preparation process and TEM images of the corresponding intermediates are shown in Fig. 12a. Specifically, ZIF-67 was firstly synthesized as a sacrificial template, followed by reaction with $\text{Ni}(\text{NO}_3)_2$, forming ZIF-67@LDH . After the reaction of ZIF-67@LDH with Na_2MoO_4 solution, double-shelled CH@LDH was obtained. More recently, authors from the same group further demonstrated that hollow nickel-ion layered double hydroxide polyhedra

(Ni/Fe LDH, Fig. 12b and c) were suitable for a sulfur host.¹⁵² MIL-88A was used as a template for Ni/Fe LDH. S@Ni/Fe LDH was prepared *via* the melt-diffusion process, which well inherited the morphology of Ni/Fe LDH except that the void in the core was filled with sulfur (Fig. 12b–e). S@Ni/Fe LDH with a sulfur loading of $2\text{--}3 \text{ mg cm}^{-2}$ presented an initial capacity of 844 mA h g^{-1} at 1C, which was maintained at 501 mA h g^{-1} after 1000 cycles, corresponding to a decay rate of 0.04% each cycle.

Besides infiltrating sulfur into a pre-synthesized hollow structure, sulfur can be encapsulated in metal hydroxides, forming core-shell or hollow yolk-shell sulfur composites. A $\alpha\text{-Ni}(\text{OH})_2$ nanosheet encapsulated nanosized sulfur ($\text{S@Ni}(\text{OH})_2$) composite was prepared *via* a two-step method (Fig. 12f).¹⁵³ Hollow sulfur nanospheres were firstly synthesized based on the reaction of $\text{Na}_2\text{S}_2\text{O}_3$, polyvinylpyrrolidone (PVP) and HCl, followed by the growth of $\alpha\text{-Ni}(\text{OH})_2$ nanosheets (3.5 nm thick) on the surface of



the as-obtained sulfur nanospheres based on the reaction of $C_6H_{12}N_4$ and $Ni(NO_3)_2 \cdot 6H_2O$. The as-prepared S@Ni(OH)₂ (sulfur content of 81 wt%) exhibited a maximum capacity of 708 mA h g^{-1} at 1C after a few activating cycles, which was maintained at 422 mA h g^{-1} after 1000 cycles, corresponding to a capacity decay rate of 0.04% per cycle and a capacity retention of 58.8%.

3.7 Metals

Metal catalysts with high electrical conductivity, such as Pt and Co, were demonstrated with excellent capability to enhance polysulfide anchoring and increase the kinetics of the polysulfide conversion reaction.²³ To promote the dispersion of metal catalysts and achieve a better sulfur distribution, hybrid hollow structures with metallic nanoparticles decorated on the surface of hollow carbon matrix are desirable. For example, a cobalt nanoparticle-decorated porous nitrogen-doped graphitic

carbon polyhedron (Co-N-GC) was prepared by thermal annealing ZIF-67 in a N_2 atmosphere.¹⁵⁴ Co-N-GC well inherited the polyhedron morphology of ZIF-67 with a similar size of 350 nm. Cobalt particles with a calculated size of 22.09 nm were uniformly dispersed on the carbon surface. The hollow-structured sulfur electrode (sulfur content 70 wt%) was obtained *via* melt-diffusion, which delivered an initial capacity of 1440 mA h g^{-1} at 0.2C which was maintained at 850 mA h g^{-1} after 200 cycles, corresponding to a decay rate of 0.023% per cycle. A nitrogen-doped hollow carbon microflower with embedded cobalt nanoparticles (H-Co-NCM) was prepared through carbonizing metanilic acid intercalated cobalt-aluminum layered double hydroxides (CoAl LDHs), followed by an acid etching step when only strongly bonded Co functionalities by nitrogen atoms remained.⁴⁷ Co/N heteroatom-doping not only promoted conductivity of the carbon matrix, but also synergistically served as active catalysts and

adsorption sites. S@H-Co-NCM was prepared by a sulfur dissolving and evaporation process in CS_2 , followed by a heat treatment at 200°C under N_2 flow. The S@H-Co-NCM cathode delivered a capacity of 611 mA h g^{-1} at 2C, and achieved a capacity decay rate of 0.069% each cycle over 500 cycles at 0.5C.

Palladium has long been used as a catalyst in different areas, such as alkylation,¹⁵⁵ coupling reactions of aryl chlorides,¹⁵⁶ oxygen reduction and hydrogen oxidation in full cells.¹⁵⁷ Zuo and co-workers initially investigated the catalysis of palladium on the sulfur conversion reaction in LSBs.¹⁵⁸ Pd-Nanocrystal-embedded hollow carbon spheres (Pd@HCS, Fig. 13c and d) were designed as the sulfur host, which were prepared through the process as shown in Fig. 13a. Combining the hollow

nanostructure with Pd nanocrystals, LiPSs were synergistically trapped by physical confinement and chemical adsorption, achieving rapid redox reactions for sulfur conversion reactions (Fig. 13b). Both Li_2S_6 adsorption test and theoretical calculations confirmed the strong interaction between LiPSs and Pd@HCS. The catalytic ability of Pd NPs was further testified by CV tests using symmetrical coin cells, with much higher redox currents when Pd@HCS was used as the electrode compared to that of using HCS. To further investigate the electrocatalysis of Pd NPs, a CV test based on semi-liquid cells was conducted. Compared to Pd@HCS, HCS exhibited much broader peaks and larger voltage hysteresis with lower cathodic onset potential and higher anodic onset potential (Fig. 13e). Owing to the advantages of Pd@HCS,

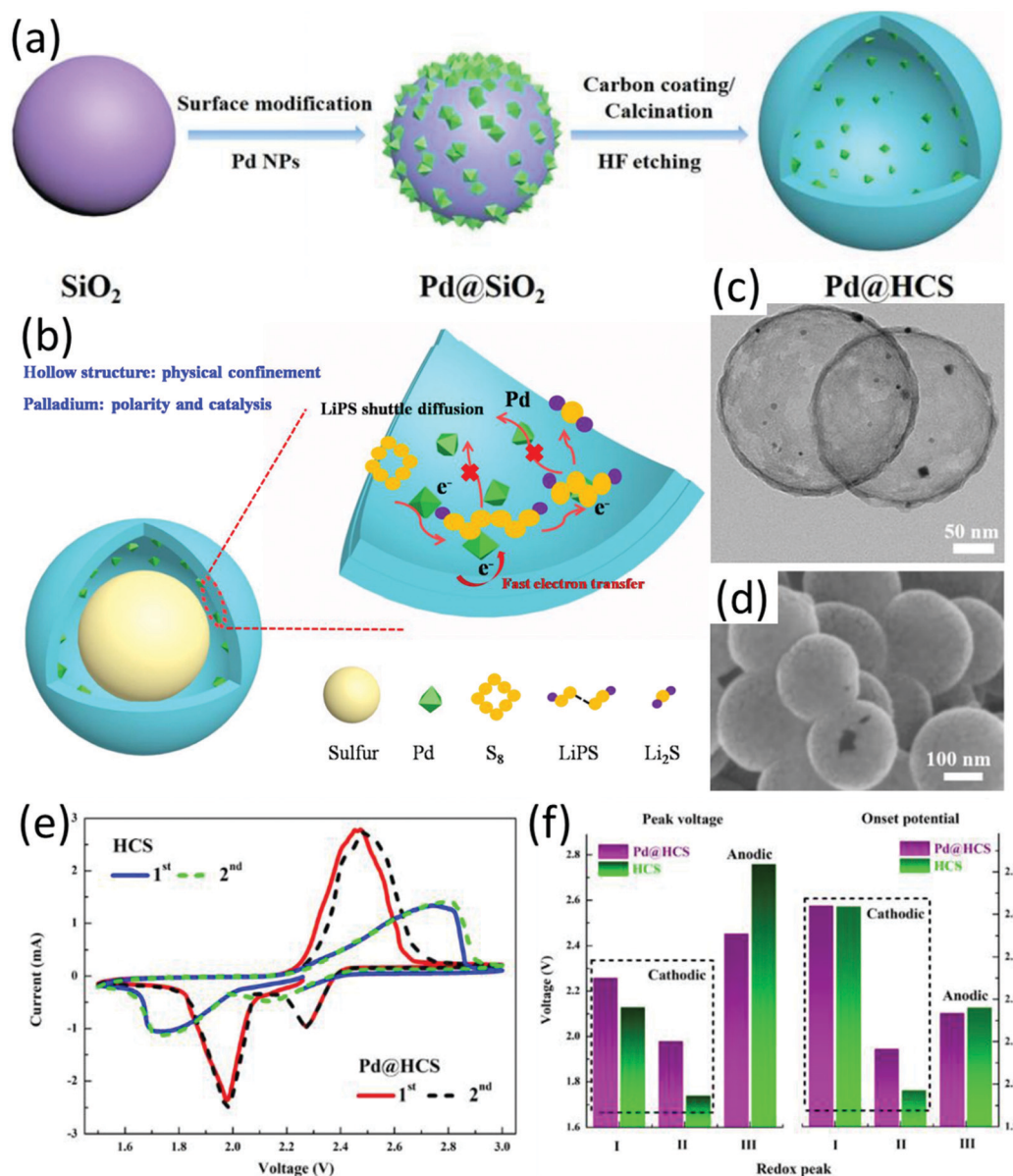


Fig. 13 (a) Schematic for the synthesis of hollow Pd@HCS microspheres, (b) schematic of the hollow Pd@HCS/S structure and the discharge process, (c) TEM, and (d) SEM images of Pd@HCS, (e) CV curves of the semi-liquid LSBs using Li_2S_6 as the active material, and (f) the corresponding peak voltages and onset potentials of the asymmetrical LSBs. Reproduced with permission.¹⁵⁸ Copyright 2019 Elsevier.

the Pd@HCS/S cathode with a high sulfur loading of 5.88 mg cm^{-2} delivered an initial capacity of 873 mA h g^{-1} at 0.2C, with a capacity retention of 85% after 100 cycles.

Single-atom catalysts have attracted ever growing interest due to their potential to achieve 100% atom utilization when used as catalysts.¹⁵⁹ By annealing Fe-ZIF-8 in an argon atmosphere, Wang *et al.* prepared an iron single-atom-decorated nitrogen-rich carbon nanocage (FeSA-CN).¹⁶⁰ Using FeSA-CN as the sulfur host, the FeSA-CN/S cathode with a sulfur content of 68.7 wt% delivered a high capacity of 605 mA h g^{-1} at 4C and exhibited a capacity retention of 70% for 500 cycles, corresponding to a capacity decay rate of 0.06% per cycle. The cycled battery using FeSA-CN as the sulfur host presented a much smoother lithium anode. The enhanced performance was attributed to the synergetic effect of the single-atom iron catalyst and nitrogen-doped carbon polyhedron. FeSA greatly facilitated the redox kinetics and thus the shuttle effect of polysulfide was mitigated. Moreover, the nitrogen-doped carbon polyhedron provided good conductivity and physical confinement to the polysulfide.

3.8 Other inorganic metal compounds

The conventional transition metal compounds, such as metal oxides/sulfides/nitrides, have attracted huge interest as sulfur host materials. The abundant material chemistries provide sufficient choices for sulfur hosts. Efforts to explore a wider range of materials as the sulfur host materials are desirable to further promote the performance of LSBs. There are some other inorganic hollow-structured materials, such as LiFePO_4 microspheres,¹⁶¹ Prussian blue nanocubes,¹⁶² and metal fluoride-based hybrid hollow structures,¹⁶³ reported as sulfur host materials and demonstrated some desirable properties. For example, hollow LiFePO_4 microspheres (LFP) were investigated as the sulfur carrier, which suppressed the shuttle effect *via* chemical adsorption and catalytically promoted the redox kinetics of conversion between long-chain and short-chain polysulfides.¹⁶¹ Combining with holey graphene (HG), LFP enabled the corresponding sulfur electrode to exhibit a high capacity of 748 mA h g^{-1} at 5C, and it maintained a capacity of 831 mA h g^{-1} at 1C after 500 cycles at a high sulfur loading of 4.3 mg cm^{-2} .

Prussian blue nanocubes ($\text{Na}_2\text{Fe}[\text{Fe}(\text{CN})_6]$) could trap polysulfide through both spatial confinement and Lewis acid–base interactions. When a conductive poly(3,4-ethylenedioxythiophene) (PEDOT) layer was coated onto $\text{Na}_2\text{Fe}[\text{Fe}(\text{CN})_6]$, a high-performance sulfur host ($(\text{Na}_2\text{Fe}[\text{Fe}(\text{CN})_6])\text{@PEDOT}$) was obtained.¹⁶² The corresponding sulfur electrode delivered a high rate performance of 683 mA h g^{-1} at 5C, which was maintained at 544 mA h g^{-1} after 200 cycles. In another study, a thin AlF_3 layer was deposited on a core–shell sulfur-hollow carbon composite (S@HCS), generating S@HCS@ AlF_3 . The as-obtained S@HCS@ AlF_3 delivered a capacity of 702 mA h g^{-1} after 500 cycles at 1C, corresponding to a capacity decay rate of 0.052% per cycle.¹⁶³ The inner carbon shell not only enhanced the electrode conductivity but also provided a physical barrier to the soluble polysulfide, while the outer AlF_3 layer further improved the overall electrode conductivity and immobilized the polysulfide *via* chemical bonding.

4 Organic hollow-structured sulfur cathodes

4.1 Conductive polymers

Conductive polymers have been widely used for sulfur cathode design in LSBs, which can not only increase the electrode conductivity but also provide strong chemical adsorption to LiPSs. Hollow polymer-sulfur composites can be constructed by either encapsulating the prefabricated sulfur particle templates with various conductive polymers on the sulfur surface, or infiltrating sulfur into the prefabricated hollow-structured polymers *via* a melt-diffusion process.

A core–shell sulfur-polypyrrole (S-PPy) composite was prepared by coating a conductive polypyrrole layer on sulfur nanospheres.¹⁶⁴ The spherical sulfur nanoparticles were prepared by a reaction of sodium thiosulfate and *p*-toluenesulfonic acid (pTSA). With the help of a cationic surfactant, decyltrimethylammonium bromide (DeTAB), polypyrrole could be readily nucleated and then formed a polypyrrole layer with a thickness of around 100 nm onto sulfur spheres. The capacity of the as-obtained S-PPy composite (sulfur content 65.8 wt%) was maintained at around 600 mA h g^{-1} at 0.5C and 400 mA h g^{-1} at 2C after 50 cycles. However, SEM images revealed that sulfur spheres were not uniformly covered by the polymer layer. Another core–shell PPy encapsulated nanosized sulfur sphere (around 150 nm) was prepared *via* a one-pot process (S@PPy, Fig. 14a).¹⁶⁵ The nanosized sulfur spheres were firstly fabricated by the reaction of Na_2S , sulfur powder and Triton X-100 solution. Then, HCl and FeCl_3 were added sequentially into the as-formed sulfur solution, followed by washing and immersing the mixture into H_3PO_4 solution for PO_4^{3-} doping. The as-prepared S@PPy with a sulfur content of 80 wt% (Fig. 14c) exhibited an initial discharge capacity of 1142 mA h g^{-1} at 0.1C, which was maintained at 805 mA h g^{-1} after 50 cycles. Besides encapsulating sulfur with polymers, melt-diffusion has also been applied to prepare polymer-sulfur hollow composites. Hollow polypyrrole nanospheres (PHNS) with wrinkled, ultra-thin shell were firstly prepared through *in situ* polymerization of pyrrole on the surface of Fe_3O_4 nanospheres (PPy@ Fe_3O_4), followed by removal of the Fe_3O_4 template using HCl solution (Fig. 14b).¹⁶⁶ S@PHNS composites were obtained *via* a melt-diffusion process. The conductive PHNS shells served as channels which enabled fast ion and electron transport, and promoted the redox reactions. Benefiting from these advantages, S@PHNS delivered a high capacity of $536.5 \text{ mA h g}^{-1}$ at 5C.

Despite the enhanced electrochemical properties, such as sulfur utilization and rate performance, it is difficult for the core–shell structure to accommodate the huge volume expansion of sulfur during the lithiation process, which might lead to unsatisfactory cycling stability. Creating a yolk–shell structure with reserved interior void space is an effective way to buffer the volume change of the conversion-type electrode materials.⁶⁹ Yolk–shell structured sulfur cathodes can be achieved by partially removing the inner sulfur of the core–shell structures *via* dissolving or thermal evaporation. A yolk–shell polyaniline-sulfur composite (S-Pani) was prepared *via* the process shown in Fig. 14f.⁴⁹ Instead of partially dissolving sulfur by toluene as

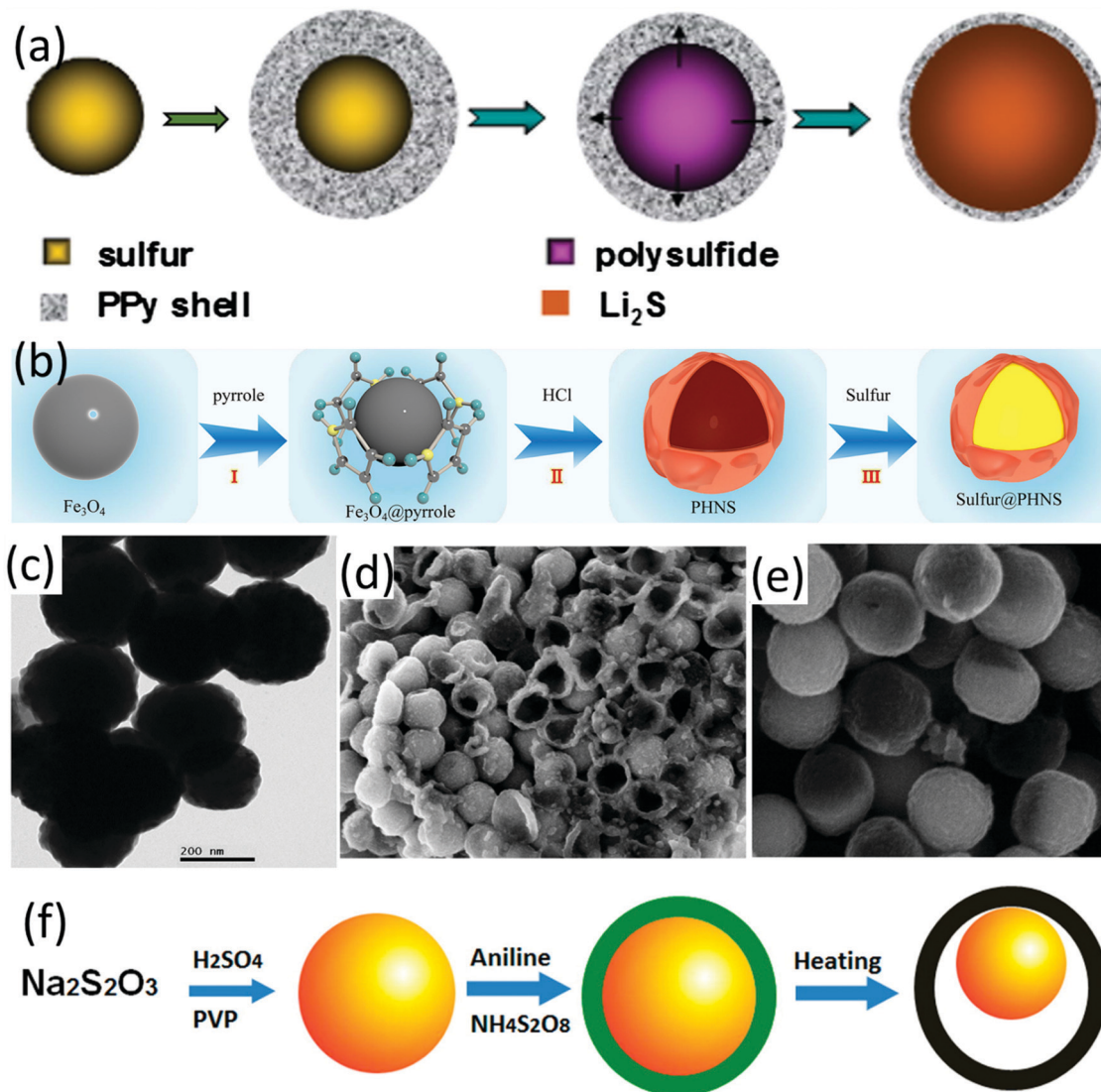


Fig. 14 (a) Schematic for the synthetic process of core-shell structured S@PPy. Reproduced with permission.¹⁶⁵ Copyright 2016 Elsevier. (b) Schematic for the synthesis of the S@PHNS composite. Reproduced with permission.¹⁶⁶ Copyright 2018, Elsevier. (c) TEM image of core-shell structured S@PPy. Reproduced with permission.¹⁶⁵ Copyright 2016 Elsevier. SEM images of (d) core-shell- and (e) yolk-shell-based S-Pani composites after five cycles, (f) schematic for the two-step synthesis process of the core-shell and yolk-shell S-Pani composites. Reproduced with permission.⁴⁹ Copyright 2013 American Chemical Society.

in Cui's work,⁶⁹ the yolk-shell structure was created *via* a heat treatment. On one hand, it was found that the S-Pani core-shell was destroyed by toluene. On the other hand, the author proposed something that was worth pondering – if sulfur could leach out from the TiO₂ shell *via* dissolving in toluene, polysulfide could leach out from the shell as it dissolved in the electrolyte. The core-shell S-Pani (sulfur content of 82 wt%) based LSBs suffered from fast capacity decay with only 280 mA h g⁻¹ left after 125 cycles. In comparison, the yolk-shell S-Pani (sulfur content of 58 wt%) based electrodes exhibited a high capacity of 765 mA h g⁻¹ after 200 cycles at 0.2C, corresponding to a capacity retention of 69.5%. The SEM images of the cycled sulfur electrode revealed that about half of the core-shell S-Pani particles were either broken or shrunk (Fig. 14d), while the yolk-shell S-Pani particles were well preserved (Fig. 14e). These results

suggested that void space in the yolk-shell structure was essential for long-term cycling stability. Despite the overwhelming cycling stability of the yolk-shell S-Pani based LSB over that of core-shell, it is unreasonable to attribute all these achievements to the yolk-shell structure, considering different sulfur contents in these two systems (82 wt% *vs.* 69.5 wt%). As is known, sulfur contents can greatly affect the battery performance.

4.2 Organic-frameworks

Owing to the high specific area and tuneable pore sizes, porous aromatic frameworks (PAFs) and metal organic frameworks (MOFs) have gained intensive research interest and have been applied in a wide spectrum of areas.^{167,168} However, due to their low conductivity, both PAFs and MOFs are typically considered not suitable for sulfur host materials. Despite the shortfall of

low conductivity, the confining effect of the porous structure and the strong Lewis acid–base interaction between LiPS and MOFs endowed them with the potential as efficient sulfur host.^{169–171} Instead of being used as the sacrifice template for the preparation of hollow structures, hollow ZIF-67 was applied as the sulfur carrier, considering the strong Lewis acid–base bonding between Co^{2+} and S^{2-} . To increase the conductivity, the ZIF-67-S composite was coated with PPy through a water-phase chemical oxidative polymerization process (ZIF-67-S-PPy).¹⁷² The fabrication is as shown in Fig. 15a. The ZIF-67-S-PPy composite with a sulfur content of 60 wt% (Fig. 15b and c) achieved the best performance among various control samples, with an initial capacity of $1092.5 \text{ mA h g}^{-1}$ and $353.6 \text{ mA h g}^{-1}$ remained after 200 cycles. Although the performance is not as impressive as many other reports, this work provides some guidance for constructing conductive hollow MOF-based composites for sulfur hosts. Considering the rich chemistries of the MOF family, more efforts on

applying MOFs as sulfur host materials may bring some new findings. As an emerging family of advanced materials, organic frameworks have gained increasing interest. Using polystyrene (PS) microspheres as sacrificial templates, porphyrin organic framework hollow spheres (POF-HSs) with regulated shell thickness and void size were prepared and used as a sulfur host (Fig. 15f and g).¹⁷³ Owing to polar POF shells and a hollow architecture, POF-HSs exhibited strong LiPS adsorption ability (Fig. 15d). Benefiting from dual chemical adsorption and physical confinement of POF-HSs, the shuttle effect of LSBs was efficiently suppressed, leading to a superior rate performance with a high capacity of 800 mA h g^{-1} at 4C (Fig. 15d), and stable cycling performance with 773 mA h g^{-1} remained after 200 cycles at 0.5C. The enhanced performance of the POF-HS based LSB suggests that organic framework engineering is an applicable approach for the preparation of efficient sulfur host materials.

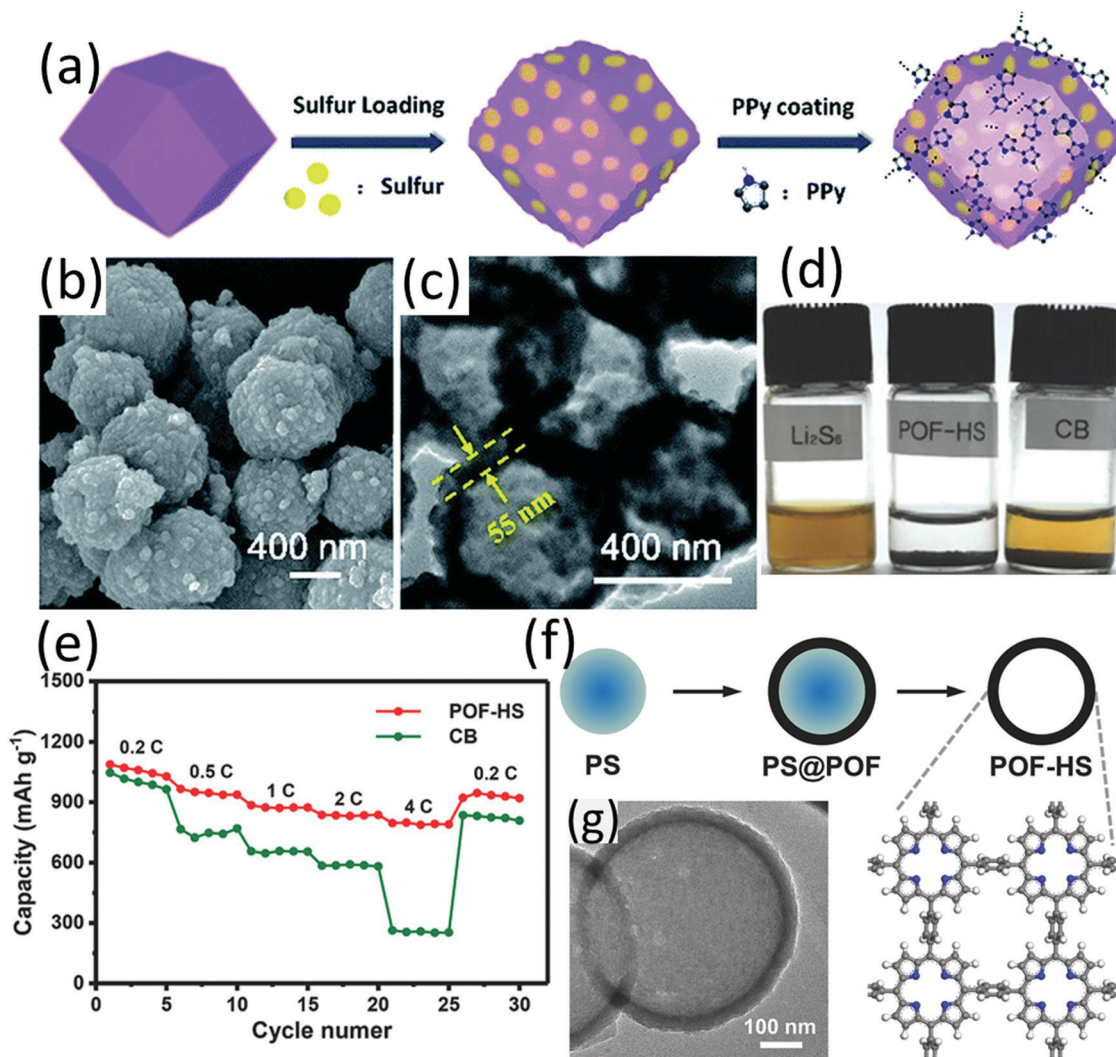


Fig. 15 (a) Schematic for the synthesis of ZIF-67-S-PPy, (b) SEM, and (c) TEM images of ZIF-67-S-PPy. Reproduced with permission.¹⁷² Copyright 2019 the Royal Society of Chemistry. (d) Visualized adsorption test of polysulfides (after 24 h) using POF-HS or CB as the adsorbents, (e) rate performance of POF-HS/S and CB/S cathodes, (f) schematic for the preparation of POF-HSs, (g) TEM image of the hollow spherical POF-HS. Reproduced with permission.¹⁷³ Copyright 2018 Wiley-VCH.

5 Summary and perspectives

The design of sulfur hosts relies on the knowledge of materials chemistry and nanostructure engineering. In brief, from the materials chemistry perspective, good electric conductivity, strong polysulfide interactions and efficient electrocatalytic activity are the key requirements; and from the nanostructure engineering angle, creating suitable porosity and void space to accommodate S_8/Li_2S , to buffer volume expansion and confine polysulfide, are critical. Because the hollow-structured materials possess a high specific surface area and tunable pore structure, and their morphology and composition are highly controllable, they have shown great potential to undertake the role of sulfur hosts in the cathode of LSBs.

In this review, we have summarised the recent advances in the design of hollow-structured sulfur cathodes for LSBs. In particular, hollow structures containing polar materials including inorganic or organic compounds and their hybrids with hollow carbons are highlighted by analysing their synthesis methods, structures and electrochemical performance in LSBs. Carbon hollow structured materials show high sulfur utilization and cycling performance due to the physical confinement of the pore channels; however, the nonpolar carbon surface is not efficient to immobilize LiPSs for long-term cycling. In contrast, inorganic or

organic hollow structures including metal oxides, sulfides, nitrides, carbides, phosphides, hydroxides, conductive polymers and organic frameworks show a better ability to anchor polysulfides due to the strong interaction between polar surfaces and LiPSs, and a higher electrocatalytic activity for the sulfur conversion reactions. Nevertheless, some of these inorganic/organic compounds face the issue of low conductivity or/and the difficulty in fabricating the hollow structure. Hybrid hollow structures integrating carbonaceous conductive frameworks with inorganic/organic polar species have provided a variety of solutions to tackle the above-mentioned issue. A comparison of some representative hollow-structured sulfur cathodes is summarised in Table 1. At the early stage when carbon materials were predominantly used as sulfur hosts, to improve the performance of LSBs, research effort was mainly focused on optimizing the geometrical structures of the host, such as the porosity, pore size distribution, pore volume, specific surface area, and the ratio between sulfur and the host.²⁸ For example, when the pores of carbon materials are small enough to confine small sulfur molecules, the cycling stability of LSBs can be significantly improved owing to the direct solid–solid reaction without generating soluble LiPSs.^{174–176} Once the sulfur content exceeded the pore volume of the host materials, the performance of LSBs degenerated quickly. Xiao *et al.* reported that

Table 1 Comparison of representative hollow-structured sulfur electrodes

A	B	C	D	E	F	G	H
Yolk–shell S–MnO ₂	Nano-S template	80	64	1.5	n/a	315/1700/2.0	55
Core–shell S/γ-MnO ₂	Nano-S template	61	43	2	n/a	374/400/2.0	59
MnO ₂ nanospheres ^a	Melt-diffusion	71	0.50	1.2	15	721/500/1.0	60
Hollow C nanofibers–MnO ₂	Melt-diffusion	71	0.50	3.5	n/a	662/300/0.5	61
C/MnO ₂ hollow nanofibers	Melt-diffusion	70	49	2.5	24	629/300/1.0	63
Core–shell C@MnO ₂	Melt-diffusion	58	41	3.0	19	550/500/1.0	64
Yolk–shell S–TiO ₂	Nano-S template	71	53	0.4–0.6	n/a	690/1000/0.5	69
TiO ₂ microboxes	Melt-diffusion	70	48	1.0	n/a	626/500/1.0	71
Multi-shelled hollow TiO _{2–x}	Melt-diffusion	56	39	0.5	n/a	713/1000/0.5	70
TiO ₂ @hollow C sphere	Melt-diffusion	70	56	1.5	n/a	630/500/0.5	79
TiO–C hollow fiber	Vapor phase infusion	73	58	5.0	n/a	680/400/0.2	80
Hollow CoS ₂ @N-doped Carbon	Melt-diffusion	75	n/a	~1.3	n/a	519/300/1.0	94
Co ₃ S ₄ nanotubes	Melt-diffusion	74	59	~2	40 μL per cell	305/1000/5.0	98
CNTs threaded hollow Co ₃ S ₄ nanoboxes	CS ₂ dissolution, melt-diffusion + evaporation	70	49	3.5	15	820/150/0.2	100
		70	56				
CNT/Co ₃ S ₄ N-doped carbon nanocubes	Melt-diffusion + evaporation	74	74	7.4	10	810/1000/5.0	101
Co ₉ S ₈ tubules	Melt-diffusion CS ₂ dissolution	70	52	n/a	n/a	894/600/1.0	105
Co ₉ S ₈ -hollow C-polyhedra	CS ₂ dissolution + melt diffusion + evaporation	77	32	3.0	15 μL per cell	680/300/0.5	178
Co-NC@Co ₉ S ₈ /NPC ^b	CS ₂ dissolution + melt-diffusion + evaporation	75	60	4.5	10	607/500/1.0	107
NiS-hollow carbon spheres	Melt-diffusion	72	50	1.0	20	695/300/0.5	108
1T-MoS ₂ nanotube–N-doped graphene	Melt-diffusion	80	64	5.2	n/a	629/100/0.2	110
Hollow porous TiN tubes	Melt-diffusion	74	52	1.0	n/a	840/450/0.5	129
Porous-shell VN nanobubbles	Melt-diffusion + evaporation	78	62	5.4	n/a	799/200/0.5	131
Co-doped VN yolk–shell	Melt-diffusion	70	49	4.1	n/a	830/100/0.2	132
MoSe ₂ @FC@Mo ₂ C ^c	Melt-diffusion + evaporation	72	50	5.5	5	688/1000/2.0	136
Hollow Fe ₃ C–N-doped carbon	Melt-diffusion	70	56	1.5	n/a	586/400/0.5	137
Ni ₂ P yolk–shell	Melt-diffusion + evaporation	65	52	n/a	n/a	394/1000/5.0	141
Ni/Fe LDH hollow polyhedron	Melt-diffusion	70	49	2–3	30	501/1000/1.0	152
α-Ni(OH) ₂ hollow spheres	Nano-S template	81	57	2.2	n/a	422/1000/1.0	153
Co–N-doped hollow carbon	Melt-diffusion	70	49	2.0	35 μL per cell	625/500/1.0	154
Pd-hollow carbon	CS ₂ dissolution and melt-diffusion	76	57	5.88	15	742/100/0.2	158

Note: the capital letters in the header refer to the following: A stands for the host materials, B the sulfur infiltration method, C the sulfur content of the sulfur–host composites (wt%), D the sulfur content of the sulfur electrode (wt%), E the areal sulfur loading (mg cm⁻²), F the electrolyte/sulfur ratio (μL mg⁻¹), G the capacity (mA h g⁻¹)/cycles/C-rate, and H the reference. ^a A carbon nanofiber membrane was added as an up-current collector. ^b Refers to a double-shelled hollow polyhedron with inlaid cobalt nanoparticles encapsulated in nitrogen-doped carbon (Co/NC) nanodots. ^c Refers to MoSe₂ and Mo₂C encapsulated into hollow F-doped carbon fibres.

hollow carbon spheres with a pore size of 2.8 nm exhibited better sulfur impregnation than those with a pore size of 4.1 nm and 3.2 nm.¹⁷⁷ Nazar *et al.* demonstrated that an improved cycling stability of LSBs could be achieved *via* deliberately controlling the shell porosity of the hollow carbon spheres.⁶⁷ Differently, the rational design of polar hollow-structured composites has mainly focused on materials' chemistry, such as chemical interactions between the host and LiPSs and the catalytic effect on the redox reactions, when the physical confinement of the hollow structure is usually taken for granted with a few efforts on further optimization of the geometrical properties. The performance of LSBs is supposed to be further improved *via* optimizing both the geometrical and chemical properties of the hollow-structured sulfur cathode.^{70,151}

Despite the impressive electrochemical performance enabled by using a wide range of advanced hollow structures as sulfur hosts, there is still a long way to go to commercialize LSBs. In terms of hollow-structured material design and preparation, cost-effective, eco-friendly and scalable fabrication methodologies are highly desirable and need more research efforts in the future. As is known, the well-controlled fabrication process in laboratory, which leads to delicate nanoarchitectures, might not work in an industry-scale production. Thus, the reproducibility of the promoted battery performance achieved at the laboratory scale remains a concern, when the materials are scaled up to the industry level.¹⁷⁹ Besides, the cost of raw materials and the delicate synthesis procedures are generally not a problem in academic research, while these remain another concern for practical applications. Similar to catalysts used in industry, long-term stability of the sulfur host is an important criterion to evaluate their performance, and thus the characterization of the sulfur hosts after long-term electrochemical cycling is essential. Battery is an application-driven technology, and thus, it is essential to keep the criteria for practical application in mind for the design of sulfur hosts and evaluation of battery performance.¹⁸⁰

From the aspect of performance evaluation, to achieve high performance LSBs with both energy density and cost superior to those of the state-of-the-art LIBs, the sulfur content and mass loading, the electrolyte to sulfur ratio, and the amount of lithium anode have to be strictly controlled.^{181,182} Although there is a growing number of research papers presenting these parameters, the lack of standard LSB systems makes it difficult to achieve a reasonable, comprehensive, and convenient comparison of various home-made systems. Without a standard system, the merits of some specific components may be overstated at the cost of other properties. For example, LSBs with low sulfur content, using a flooded electrolyte and an overdose of lithium at the anode could still achieve high specific capacity. A standard LSB can not only make the real good ones stand out and the shortfalls visible, but also act as a lighthouse to provide a practical direction for the research community. Moreover, most of the studies only demonstrated the champion performance. It is widely known that LSBs are very sensitive to the fabrication and testing conditions, and hence it is hard to make a conclusion that some specific optimization works according to

a single impressive battery. In this regard, to make a more reasonable conclusion, the statistic distribution of the performance of a batch cell is required.

Lastly, as mentioned above, the sulfur cathode, lithium anode, electrolyte and the separator all play critical roles in the battery operation. The research efforts have predominantly focused on the cathode parts. Despite the growing research work on the other components, such as solid-state electrolytes and lithium metal anodes, research on the entire LSB systems is still lacking.^{183–186} Furthermore, the interplay of different components has not yet been well understood. LSBs are a complicated system, and a step closer to practical application of LSBs may lie in the incorporation of the advances in different components, and a better understanding of the interplay among them.

Conflicts of interest

There are no conflicts to declare.

References

- 1 M. Li, J. Lu, Z. Chen and K. Amine, 30 years of lithium-ion batteries, *Adv. Mater.*, 2018, **30**, 1800561.
- 2 V. Kolosnitsyn and E. Karaseva, Lithium-sulfur batteries: Problems and solutions, *Russ. J. Electrochem.*, 2008, **44**, 506–509.
- 3 J. Janek and W. G. Zeier, A solid future for battery development, *Nat. Energy*, 2016, **1**, 1–4.
- 4 Z. P. Cano, D. Banham, S. Ye, A. Hintennach, J. Lu, M. Fowler and Z. Chen, Batteries and fuel cells for emerging electric vehicle markets, *Nat. Energy*, 2018, **3**, 279–289.
- 5 L. Grande, E. Paillard, J. Hassoun, J. B. Park, Y. J. Lee, Y. K. Sun, S. Passerini and B. Scrosati, The lithium/air battery: still an emerging system or a practical reality?, *Adv. Mater.*, 2015, **27**, 784–800.
- 6 S. H. Chung and A. Manthiram, Current status and future prospects of metal-sulfur batteries, *Adv. Mater.*, 2019, **31**, 1901125.
- 7 J. Muldoon, C. B. Bucur and T. Gregory, Quest for non-aqueous multivalent secondary batteries: magnesium and beyond, *Chem. Rev.*, 2014, **114**, 11683–11720.
- 8 P. G. Bruce, S. A. Freunberger, L. J. Hardwick and J.-M. Tarascon, Li-O₂ and Li-S batteries with high energy storage, *Nat. Mater.*, 2012, **11**, 19–29.
- 9 H. Danuta, U. Juliusz, D. Herbert and J. Ulam, *Electric dry cells and storage batteries*, *US Pat.*, 3043896, 1962.
- 10 H. Yamin, J. Penciner, A. Gorenshtain, M. Elam and E. Peled, The electrochemical behavior of polysulfides in tetrahydrofuran, *J. Power Sources*, 1985, **14**, 129–134.
- 11 H. Yamin and E. Peled, Electrochemistry of a nonaqueous lithium/sulfur cell, *J. Power Sources*, 1983, **9**, 281–287.
- 12 Z. W. Seh, Y. Sun, Q. Zhang and Y. Cui, Designing high-energy lithium-sulfur batteries, *Chem. Soc. Rev.*, 2016, **45**, 5605–5634.

- 13 A. Manthiram, Y. Fu, S.-H. Chung, C. Zu and Y.-S. Su, Rechargeable lithium–sulfur batteries, *Chem. Rev.*, 2014, **114**, 11751–11787.
- 14 X. Ji, K. T. Lee and L. F. Nazar, A highly ordered nanostructured carbon–sulphur cathode for lithium–sulphur batteries, *Nat. Mater.*, 2009, **8**, 500–506.
- 15 Z. Li, Y. Huang, L. Yuan, Z. Hao and Y. Huang, Status and prospects in sulfur–carbon composites as cathode materials for rechargeable lithium–sulfur batteries, *Carbon*, 2015, **92**, 41–63.
- 16 Q. Pang, X. Liang, C. Y. Kwok and L. F. Nazar, Advances in lithium–sulfur batteries based on multifunctional cathodes and electrolytes, *Nat. Energy*, 2016, **1**, 1–11.
- 17 Z. Zeng and X. Liu, Sulfur immobilization by “chemical anchor” to suppress the diffusion of polysulfides in lithium–sulfur batteries, *Adv. Mater. Interfaces*, 2018, **5**, 1701274.
- 18 J. Xu, T. Lawson, H. Fan, D. Su and G. Wang, Updated Metal Compounds (MOFs, S, OH, N, C) Used as Cathode Materials for Lithium–Sulfur Batteries, *Adv. Energy Mater.*, 2018, **8**, 1702607.
- 19 Y. Wang, X. Huang, S. Zhang and Y. Hou, Sulfur hosts against the shuttle effect, *Small Methods*, 2018, **2**, 1700345.
- 20 W. Ren, W. Ma, S. Zhang and B. Tang, Recent advances in shuttle effect inhibition for lithium sulfur batteries, *Energy Storage Mater.*, 2019, **23**, 707–732.
- 21 T. Tang and Y. Hou, Chemical Confinement and Utility of Lithium Polysulfides in Lithium Sulfur Batteries, *Small Methods*, 2019, 1900001.
- 22 D. Liu, C. Zhang, G. Zhou, W. Lv, G. Ling, L. Zhi and Q. H. Yang, Catalytic effects in lithium–sulfur batteries: promoted sulfur transformation and reduced shuttle effect, *Adv. Sci.*, 2018, **5**, 1700270.
- 23 H. Al Salem, G. Babu, C. V. Rao and L. M. R. Arava, Electrocatalytic polysulfide traps for controlling redox shuttle process of Li–S batteries, *J. Am. Chem. Soc.*, 2015, **137**, 11542–11545.
- 24 W. G. Lim, S. Kim, C. Jo and J. Lee, A comprehensive review of materials with catalytic effects in Li–S batteries: enhanced redox kinetics, *Angew. Chem., Int. Ed.*, 2019, **58**, 18746–18757.
- 25 J. Park, S.-H. Yu and Y.-E. Sung, Design of structural and functional nanomaterials for lithium–sulfur batteries, *Nano Today*, 2018, **18**, 35–64.
- 26 J. Zhang, H. Huang, J. Bae, S. H. Chung, W. Zhang, A. Manthiram and G. Yu, Nanostructured host materials for trapping sulfur in rechargeable Li–S batteries: structure design and interfacial chemistry, *Small Methods*, 2018, **2**, 1700279.
- 27 M. Jana, R. Xu, X.-B. Cheng, J. S. Yeon, J. M. Park, J.-Q. Huang, Q. Zhang and H. S. Park, Rational design of two-dimensional nanomaterials for lithium–sulfur batteries, *Energy Environ. Sci.*, 2020, **13**, 1049–1075.
- 28 Z. Li, H. B. Wu and X. W. D. Lou, Rational designs and engineering of hollow micro-/nanostructures as sulfur hosts for advanced lithium–sulfur batteries, *Energy Environ. Sci.*, 2016, **9**, 3061–3070.
- 29 J. Wang, Y. Cui and D. Wang, Design of hollow nanostructures for energy storage, conversion and production, *Adv. Mater.*, 2019, **31**, 1801993.
- 30 J. Zhao, M. Yang, N. Yang, J. Wang and D. Wang, Hollow Micro-/Nanostructure Reviving Lithium–sulfur Batteries, *Chem. Res. Chin. Univ.*, 2020, **36**, 313–319.
- 31 Q. Sun, B. He, X.-Q. Zhang and A.-H. Lu, Engineering of Hollow Core–Shell Interlinked Carbon Spheres for Highly Stable Lithium–Sulfur Batteries, *ACS Nano*, 2015, **9**, 8504–8513.
- 32 Z. Yu, M. Liu, D. Guo, J. Wang, X. Chen, J. Li, H. Jin and Z. Yang, X. a. Chen and S. Wang, Radially Inwardly Aligned Hierarchical Porous Carbon for Ultra-Long-Life Lithium–Sulfur Batteries, *Angew. Chem., Int. Ed.*, 2020, **59**, 6406–6411.
- 33 J. Zang, T. An, Y. Dong, X. Fang, M. Zheng, Q. Dong and N. Zheng, Hollow-in-hollow carbon spheres with hollow foam-like cores for lithium–sulfur batteries, *Nano Res.*, 2015, **8**, 2663–2675.
- 34 Y. Zhong, Q. Lu, Y. Zhu, Y. Zhu, W. Zhou, S. Wang and Z. Shao, Fructose-Derived Hollow Carbon Nanospheres with Ultrathin and Ordered Mesoporous Shells as Cathodes in Lithium–Sulfur Batteries for Fast Energy Storage, *Adv. Sustainable Syst.*, 2017, **1**, 1700081.
- 35 C. Zhang, H. B. Wu, C. Yuan, Z. Guo and X. W. Lou, Confining Sulfur in Double-Shelled Hollow Carbon Spheres for Lithium–Sulfur Batteries, *Angew. Chem., Int. Ed.*, 2012, **51**, 9592–9595.
- 36 N. Jayaprakash, J. Shen and S. S. Moganty, A. Corona and L. A. Archer, Porous Hollow Carbon@Sulfur Composites for High-Power Lithium–Sulfur Batteries, *Angew. Chem., Int. Ed.*, 2011, **50**, 5904–5908.
- 37 W. Zhou, C. Wang, Q. Zhang, H. D. Abruña, Y. He, J. Wang, S. X. Mao and X. Xiao, Tailoring pore size of nitrogen-doped hollow carbon nanospheres for confining sulfur in lithium–sulfur batteries, *Adv. Energy Mater.*, 2015, **5**, 1401752.
- 38 M. Zhang, C. Yu, C. Zhao, X. Song, X. Han, S. Liu, C. Hao and J. Qiu, Cobalt-embedded nitrogen-doped hollow carbon nanorods for synergistically immobilizing the discharge products in lithium–sulfur battery, *Energy Storage Mater.*, 2016, **5**, 223–229.
- 39 A. Fu, C. Wang, F. Pei, J. Cui, X. Fang and N. Zheng, Recent advances in hollow porous carbon materials for lithium–sulfur batteries, *Small*, 2019, **15**, 1804786.
- 40 M. Barghamadi, A. S. Best, A. I. Bhatt, A. F. Hollenkamp, M. Musameh, R. J. Rees and T. R  ther, Lithium–sulfur batteries—the solution is in the electrolyte, but is the electrolyte a solution?, *Energy Environ. Sci.*, 2014, **7**, 3902–3920.
- 41 Y.-S. Su, Y. Fu, T. Cochell and A. Manthiram, A strategic approach to recharging lithium–sulphur batteries for long cycle life, *Nat. Commun.*, 2013, **4**, 1–8.
- 42 L. Kong, H.-J. Peng, J.-Q. Huang, W. Zhu, G. Zhang, Z.-W. Zhang, P.-Y. Zhai, P. Sun, J. Xie and Q. Zhang, Beaver-dam-like membrane: a robust and sulphophilic MgBO₂(OH)/CNT/PP nest separator in Li–S batteries, *Energy Storage Mater.*, 2017, **8**, 153–160.
- 43 H. Pan, J. Chen, R. Cao, V. Murugesan, N. N. Rajput, K. S. Han, K. Persson, L. Estevez, M. H. Engelhard and

- J.-G. Zhang, Non-encapsulation approach for high-performance Li-S batteries through controlled nucleation and growth, *Nat. Energy*, 2017, **2**, 813–820.
- 44 D. Lin, Y. Liu and Y. Cui, Reviving the lithium metal anode for high-energy batteries, *Nat. Nanotechnol.*, 2017, **12**, 194–206.
- 45 X. Zhang, A. Wang, X. Liu and J. Luo, Dendrites in lithium metal anodes: suppression, regulation, and elimination, *Acc. Chem. Res.*, 2019, **52**, 3223–3232.
- 46 S. Zhang, K. Ueno, K. Dokko and M. Watanabe, Recent advances in electrolytes for lithium-sulfur batteries, *Adv. Energy Mater.*, 2015, **5**, 1500117.
- 47 S. Chen, X. Han, J. Luo, J. Liao, J. Wang, Q. Deng, Z. Zeng and S. Deng, In situ transformation of LDH into hollow cobalt-embedded and N-doped carbonaceous microflowers as polysulfide mediator for lithium-sulfur batteries, *Chem. Eng. J.*, 2020, **385**, 123457.
- 48 B. Meyer, Elemental sulfur, *Chem. Rev.*, 1976, **76**, 367–388.
- 49 W. Zhou, Y. Yu, H. Chen, F. J. DiSalvo and H. C. D. Abruña, Yolk-shell structure of polyaniline-coated sulfur for lithium-sulfur batteries, *J. Am. Chem. Soc.*, 2013, **135**, 16736–16743.
- 50 R. G. Chaudhuri and S. Paria, Synthesis of sulfur nanoparticles in aqueous surfactant solutions, *J. Colloid Interface Sci.*, 2010, **343**, 439–446.
- 51 Y. Guo, J. Zhao, S. Yang, K. Yu, Z. Wang and H. Zhang, Preparation and characterization of monoclinic sulfur nanoparticles by water-in-oil microemulsions technique, *Powder Technol.*, 2006, **162**, 83–86.
- 52 G. Zhou, H. Tian, Y. Jin, X. Tao, B. Liu, R. Zhang, Z. W. Seh, D. Zhuo, Y. Liu and J. Sun, Catalytic oxidation of Li₂S on the surface of metal sulfides for Li-S batteries, *Proc. Natl. Acad. Sci. U. S. A.*, 2017, **114**, 840–845.
- 53 X. Liang, C. Hart, Q. Pang, A. Garsuch, T. Weiss and L. F. Nazar, A highly efficient polysulfide mediator for lithium-sulfur batteries, *Nat. Commun.*, 2015, **6**, 1–8.
- 54 A. N. Arias, A. Y. Tesio and V. Flexer, Non-Carbonaceous Materials as Cathodes for Lithium-Sulfur Batteries, *J. Electrochem. Soc.*, 2018, **165**, A6119.
- 55 X. Liang and L. F. Nazar, In Situ Reactive Assembly of Scalable Core-Shell Sulfur-MnO₂ Composite Cathodes, *ACS Nano*, 2016, **10**, 4192–4198.
- 56 K. Kim, P. J. Kim, J. P. Youngblood and V. G. Pol, Surface Functionalization of Carbon Architecture with Nano-MnO₂ for Effective Polysulfide Confinement in Lithium-Sulfur Batteries, *ChemSusChem*, 2018, **11**, 2375–2381.
- 57 X. Zhao, H. Wang, G. Zhai and G. Wang, Facile Assembly of 3D Porous Reduced Graphene Oxide/Ultrathin MnO₂ Nanosheets-S Aerogels as Efficient Polysulfide Adsorption Sites for High-Performance Lithium-Sulfur Batteries, *Chem. – Eur. J.*, 2017, **23**, 7037–7045.
- 58 J. Liu, C. Wang, B. Liu, X. Ke, L. Liu, Z. Shi, H. Zhang and Z. Guo, Rational synthesis of MnO₂@CMK/S composite as cathode materials for lithium-sulfur batteries, *Mater. Lett.*, 2017, **195**, 236–239.
- 59 L. Ni, Z. Wu, G. Zhao, C. Sun, C. Zhou, X. Gong and G. Diao, Core-Shell Structure and Interaction Mechanism of γ -MnO₂ Coated Sulfur for Improved Lithium-Sulfur Batteries, *Small*, 2017, **13**, 1603466.
- 60 S. Tu, X. Zhao, M. Cheng, P. Sun, Y. He and Y. Xu, Uniform Mesoporous MnO₂ Nanospheres as a Surface Chemical Adsorption and Physical Confinement Polysulfide Mediator for Lithium-Sulfur Batteries, *ACS Appl. Mater. Interfaces*, 2019, **11**, 10624–10630.
- 61 Z. Li, J. Zhang and X. W. Lou, Hollow carbon nanofibers filled with MnO₂ nanosheets as efficient sulfur hosts for lithium-sulfur batteries, *Angew. Chem., Int. Ed.*, 2015, **54**, 12886–12890.
- 62 S. Rehman, T. Tang, Z. Ali, X. Huang and Y. Hou, Integrated design of MnO₂@ carbon hollow nanoboxes to synergistically encapsulate polysulfides for empowering lithium sulfur batteries, *Small*, 2017, **13**, 1700087.
- 63 L. Ni, G. Zhao, Y. Wang, Z. Wu, W. Wang, Y. Liao, G. Yang and G. Diao, Coaxial Carbon/MnO₂ Hollow Nanofibers as Sulfur Hosts for High-Performance Lithium-Sulfur Batteries, *Chem. – Asian J.*, 2017, **12**, 3128–3134.
- 64 L. Ni, G. Zhao, G. Yang, G. Niu, M. Chen and G. Diao, Dual core-shell-structured S@C@MnO₂ nanocomposite for highly stable lithium-sulfur batteries, *ACS Appl. Mater. Interfaces*, 2017, **9**, 34793–34803.
- 65 M. Yan, Y. Zhang, Y. Li, Y. Huo, Y. Yu, C. Wang, J. Jin, L. Chen, T. Hasan, B. Wang and B.-L. Su, Manganese dioxide nanosheet functionalized sulfur@PEDOT core-shell nanospheres for advanced lithium-sulfur batteries, *J. Mater. Chem. A*, 2016, **4**, 9403–9412.
- 66 J. Wu, Q. Ma, C. Lian, Y. Yuan and D. Long, Promoting polythionate intermediates formation by oxygen-deficient manganese oxide hollow nanospheres for high performance lithium-sulfur batteries, *Chem. Eng. J.*, 2019, **370**, 556–564.
- 67 S. Evers, T. Yim and L. F. Nazar, Understanding the nature of absorption/adsorption in nanoporous polysulfide sorbents for the Li-S battery, *J. Phys. Chem. C*, 2012, **116**, 19653–19658.
- 68 C. Yuan, S. Zhu, H. Cao, L. Hou and J. Lin, Hierarchical sulfur-impregnated hydrogenated TiO₂ mesoporous spheres comprising anatase nanosheets with highly exposed (001) facets for advanced Li-S batteries, *Nanotechnology*, 2015, **27**, 045403.
- 69 Z. Wei Seh, W. Li, J. J. Cha, G. Zheng, Y. Yang, M. T. McDowell, P.-C. Hsu and Y. Cui, Sulphur-TiO₂ yolk-shell nanoarchitecture with internal void space for long-cycle lithium-sulphur batteries, *Nat. Commun.*, 2013, **4**, 1331.
- 70 E. H. M. Salhabi, J. Zhao, J. Wang, M. Yang, B. Wang and D. Wang, Hollow Multi-Shelled Structural TiO₂-x with Multiple Spatial Confinement for Long-Life Lithium-Sulfur Batteries, *Angew. Chem., Int. Ed.*, 2019, **131**, 9176–9180.
- 71 J. Ni, L. Jin, M. Xue, J. Zheng, J. P. Zheng and C. Zhang, TiO₂ microboxes as effective polysulfide reservoirs for lithium sulfur batteries, *Electrochim. Acta*, 2019, **296**, 39–48.
- 72 X. Gao, G. Li, Y. Xu, Z. Hong, C. Liang and Z. Lin, TiO₂ Microboxes with Controlled Internal Porosity for High-Performance Lithium Storage, *Angew. Chem., Int. Ed.*, 2015, **54**, 14331–14335.
- 73 W. Yang, L. Zhang, Y. Hu, Y. Zhong, H. B. Wu and X. W. Lou, Microwave-Assisted Synthesis of Porous Ag₂S-Ag

- Hybrid Nanotubes with High Visible-Light Photocatalytic Activity, *Angew. Chem., Int. Ed.*, 2012, **51**, 11501–11504.
- 74 X. Tao, J. Wang, Z. Ying, Q. Cai, G. Zheng, Y. Gan, H. Huang, Y. Xia, C. Liang, W. Zhang and Y. Cui, Strong Sulfur Binding with Conducting Magnéli-Phase TiO_{2n-1} Nanomaterials for Improving Lithium–Sulfur Batteries, *Nano Lett.*, 2014, **14**, 5288–5294.
- 75 Q. Pang, D. Kundu, M. Cuisinier and L. F. Nazar, Surface-enhanced redox chemistry of polysulphides on a metallic and polar host for lithium-sulphur batteries, *Nat. Commun.*, 2014, **5**, 4759.
- 76 J. Wang, J. Wan, N. Yang, Q. Li and D. Wang, Hollow multishell structures exercise temporal-spatial ordering and dynamic smart behaviour, *Nat. Rev. Chem.*, 2020, **4**, 159–168.
- 77 J. Wang, H. Tang, H. Wang, R. Yu and D. Wang, Multi-shelled hollow micro-/nanostructures: promising platforms for lithium-ion batteries, *Mater. Chem. Front.*, 2017, **1**, 414–430.
- 78 D.-S. Bin, Z.-X. Chi, Y. Li, K. Zhang, X. Yang, Y.-G. Sun, J.-Y. Piao, A.-M. Cao and L.-J. Wan, Controlling the Compositional Chemistry in Single Nanoparticles for Functional Hollow Carbon Nanospheres, *J. Am. Chem. Soc.*, 2017, **139**, 13492–13498.
- 79 Z. Li, J. Zhang, B. Guan, D. Wang, L.-M. Liu and X. W. D. Lou, A sulfur host based on titanium monoxide@ carbon hollow spheres for advanced lithium–sulfur batteries, *Nat. Commun.*, 2016, **7**, 1–11.
- 80 Z. Li, B. Y. Guan, J. Zhang and X. W. D. Lou, A compact nanoconfined sulfur cathode for high-performance lithium-sulfur batteries, *Joule*, 2017, **1**, 576–587.
- 81 X. Wu, Y. Du, P. Wang, L. Fan, J. Cheng, M. Wang, Y. Qiu, B. Guan, H. Wu and N. Zhang, Kinetics enhancement of lithium–sulfur batteries by interlinked hollow MoO_2 sphere/nitrogen-doped graphene composite, *J. Mater. Chem. A*, 2017, **5**, 25187–25192.
- 82 W. Qi, W. Jiang, F. Xu, J. Jia, C. Yang and B. Cao, Improving confinement and redox kinetics of polysulfides through hollow NC@ CeO_2 nanospheres for high-performance lithium-sulfur batteries, *Chem. Eng. J.*, 2020, **382**, 122852.
- 83 L. Fan, H. Wu, X. Wu, M. Wang, J. Cheng, N. Zhang, Y. Feng and K. Sun, Fe-MOF derived jujube pit like $\text{Fe}_3\text{O}_4/\text{C}$ composite as sulfur host for lithium-sulfur battery, *Electrochim. Acta*, 2019, **295**, 444–451.
- 84 M. Zhu, S. Li, J. Liu and B. Li, Promoting polysulfide conversion by V_2O_3 hollow sphere for enhanced lithium-sulfur battery, *Appl. Surf. Sci.*, 2019, **473**, 1002–1008.
- 85 B. Cao, D. Li, B. Hou, Y. Mo, L. Yin and Y. Chen, Synthesis of double-shell $\text{SnO}_2@\text{C}$ hollow nanospheres as sulfur/sulfide cages for lithium–sulfur batteries, *ACS Appl. Mater. Interfaces*, 2016, **8**, 27795–27802.
- 86 J. Wang, W. Wang, Y. Zhang, Z. Bakenov, Y. Zhao and X. Wang, Synthesis of highly defective hollow double-shelled Co_3O_4-x microspheres as sulfur host for high-performance lithium-sulfur batteries, *Mater. Lett.*, 2019, **255**, 126581.
- 87 L. Hu, C. Dai, H. Liu, Y. Li, B. Shen, Y. Chen, S. J. Bao and M. Xu, Double-Shelled $\text{NiO-NiCo}_2\text{O}_4$ Heterostructure@ Carbon Hollow Nanocages as an Efficient Sulfur Host for Advanced Lithium–Sulfur Batteries, *Adv. Energy Mater.*, 2018, **8**, 1800709.
- 88 W. Wang, Y. Zhao, Y. Zhang, J. Wang, G. Cui, M. Li, Z. Bakenov and X. Wang, Defect-Rich Multishelled Fe-Doped Co_3O_4 Hollow Microspheres with Multiple Spatial Confinements to Facilitate Catalytic Conversion of Polysulfides for High-Performance Li–S Batteries, *ACS Appl. Mater. Interfaces*, 2020, **12**, 12763–12773.
- 89 J.-X. Lin, Y.-X. Mo, P.-F. Zhang, Y.-Y. Li, Y.-J. Wu, S.-J. Zhang, Z.-G. Gao, J.-D. Chen, W.-F. Ren, J.-T. Li, Y. Zhou, L. Huang and S.-G. Sun, Ultrahigh sulfur content up to 93 wt% encapsulated in multilayer nanoshell of $\text{V}/\text{V}_2\text{O}_5$ composite to suppress shuttle effect of lithium–sulfur battery with high-performance, *Mater. Today Energy*, 2019, **13**, 267–276.
- 90 X. Liu, J. Q. Huang, Q. Zhang and L. Mai, Nanostructured metal oxides and sulfides for lithium–sulfur batteries, *Adv. Mater.*, 2017, **29**, 1601759.
- 91 J. S. Jirkovsky, A. Björling and E. Ahlberg, Reduction of oxygen on dispersed nanocrystalline CoS_2 , *J. Phys. Chem. C*, 2012, **116**, 24436–24444.
- 92 M. S. Faber, R. Dziedzic, M. A. Lukowski, N. S. Kaiser, Q. Ding and S. Jin, High-performance electrocatalysis using metallic cobalt pyrite (CoS_2) micro- and nanostructures, *J. Am. Chem. Soc.*, 2014, **136**, 10053–10061.
- 93 Z. Yuan, H.-J. Peng, T.-Z. Hou, J.-Q. Huang, C.-M. Chen, D.-W. Wang, X.-B. Cheng, F. Wei and Q. Zhang, Powering Lithium–Sulfur Battery Performance by Propelling Polysulfide Redox at Sulfiphilic Hosts, *Nano Lett.*, 2016, **16**, 519–527.
- 94 S. D. Seo, D. Park, S. Park and D. W. Kim, Brain-Coral-Like Mesoporous Hollow $\text{CoS}_2@\text{N}$ -Doped Graphitic Carbon Nanoshells as Efficient Sulfur Reservoirs for Lithium–Sulfur Batteries, *Adv. Funct. Mater.*, 2019, **29**, 1903712.
- 95 R. Bouchard, P. Russo and A. Wold, Preparation and electrical properties of some thiospinels, *Inorg. Chem.*, 1965, **4**, 685–688.
- 96 Z.-F. Huang, J. Song, K. Li, M. Tahir, Y.-T. Wang, L. Pan, L. Wang, X. Zhang and J.-J. Zou, Hollow Cobalt-Based Bimetallic Sulfide Polyhedra for Efficient All-pH-Value Electrochemical and Photocatalytic Hydrogen Evolution, *J. Am. Chem. Soc.*, 2016, **138**, 1359–1365.
- 97 H. Xu and A. Manthiram, Hollow cobalt sulfide polyhedra-enabled long-life, high areal-capacity lithium-sulfur batteries, *Nano Energy*, 2017, **33**, 124–129.
- 98 J. Pu, Z. Shen, J. Zheng, W. Wu, C. Zhu, Q. Zhou, H. Zhang and F. Pan, Multifunctional $\text{Co}_3\text{S}_4@\text{sulfur}$ nanotubes for enhanced lithium-sulfur battery performance, *Nano Energy*, 2017, **37**, 7–14.
- 99 H. Behret, H. Binder and G. Sandstedt, Electrocatalytic oxygen reduction with thiospinels and other sulphides of transition metals, *Electrochim. Acta*, 1975, **20**, 111–117.
- 100 T. Chen, Z. Zhang, B. Cheng, R. Chen, Y. Hu, L. Ma, G. Zhu, J. Liu and Z. Jin, Self-Templated Formation of Interlaced Carbon Nanotubes Threaded Hollow Co_3S_4 Nanoboxes for

- High-Rate and Heat-Resistant Lithium–Sulfur Batteries, *J. Am. Chem. Soc.*, 2017, **139**, 12710–12715.
- 101 H. Zhang, M. Zou, W. Zhao, Y. Wang, Y. Chen, Y. Wu, L. Dai and A. Cao, Highly Dispersed Catalytic Co₃S₄ among a Hierarchical Carbon Nanostructure for High-Rate and Long-Life Lithium–Sulfur Batteries, *ACS Nano*, 2019, **13**, 3982–3991.
- 102 N. Kumar, N. Raman and A. Sundaresan, Synthesis and properties of cobalt sulfide phases: CoS₂ and Co₉S₈, *Z. anorg. allg. Chem.*, 2014, **640**, 1069–1074.
- 103 Q. Pang, D. Kundu and L. F. Nazar, A graphene-like metallic cathode host for long-life and high-loading lithium–sulfur batteries, *Mater. Horiz.*, 2016, **3**, 130–136.
- 104 X. Tao, J. Wang, C. Liu, H. Wang, H. Yao, G. Zheng, Z. W. Seh, Q. Cai, W. Li and G. Zhou, Balancing surface adsorption and diffusion of lithium-polysulfides on non-conductive oxides for lithium–sulfur battery design, *Nat. Commun.*, 2016, **7**, 11203.
- 105 C. Dai, J. M. Lim, M. Wang, L. Hu, Y. Chen, Z. Chen, H. Chen, S. J. Bao, B. Shen and Y. Li, Honeycomb-Like Spherical Cathode Host Constructed from Hollow Metallic and Polar Co₉S₈ Tubules for Advanced Lithium–Sulfur Batteries, *Adv. Funct. Mater.*, 2018, **28**, 1704443.
- 106 T. Chen, L. Ma, B. Cheng, R. Chen, Y. Hu, G. Zhu, Y. Wang, J. Liang, Z. Tie and J. Liu, Metallic and polar Co₉S₈ inlaid carbon hollow nanopolyhedra as efficient polysulfide mediator for lithium–sulfur batteries, *Nano Energy*, 2017, **38**, 239–248.
- 107 Z. Li, Z. Xiao, P. Li, X. Meng and R. Wang, Enhanced Chemisorption and Catalytic Effects toward Polysulfides by Modulating Hollow Nanoarchitectures for Long-Life Lithium–Sulfur Batteries, *Small*, 2020, **16**, 1906114.
- 108 C. Ye, L. Zhang, C. Guo, D. Li, A. Vasileff, H. Wang and S. Z. Qiao, A 3D hybrid of chemically coupled nickel sulfide and hollow carbon spheres for high performance lithium–sulfur batteries, *Adv. Funct. Mater.*, 2017, **27**, 1702524.
- 109 H.-E. Wang, X. Li, N. Qin, X. Zhao, H. Cheng, G. Cao and W. Zhang, Sulfur-deficient MoS₂ grown inside hollow mesoporous carbon as a functional polysulfide mediator, *J. Mater. Chem. A*, 2019, **7**, 12068–12074.
- 110 B. Yu, Y. Chen, Z. Wang, D. Chen, X. Wang, W. Zhang, J. He and W. He, 1T-MoS₂ nanotubes wrapped with N-doped graphene as highly-efficient absorbent and electrocatalyst for Li–S batteries, *J. Power Sources*, 2020, **447**, 227364.
- 111 Q. Liu, J. Jin and J. Zhang, NiCo₂S₄@ graphene as a bifunctional electrocatalyst for oxygen reduction and evolution reactions, *ACS Appl. Mater. Interfaces*, 2013, **5**, 5002–5008.
- 112 A. Sivanantham, P. Ganesan and S. Shanmugam, Hierarchical NiCo₂S₄ nanowire arrays supported on Ni foam: an efficient and durable bifunctional electrocatalyst for oxygen and hydrogen evolution reactions, *Adv. Funct. Mater.*, 2016, **26**, 4661–4672.
- 113 L. Shen, J. Wang, G. Xu, H. Li, H. Dou and X. Zhang, NiCo₂S₄ nanosheets grown on nitrogen-doped carbon foams as an advanced electrode for supercapacitors, *Adv. Energy Mater.*, 2015, **5**, 1400977.
- 114 J. Xiao, L. Wan, S. Yang, F. Xiao and S. Wang, Design hierarchical electrodes with highly conductive NiCo₂S₄ nanotube arrays grown on carbon fiber paper for high-performance pseudocapacitors, *Nano Lett.*, 2014, **14**, 831–838.
- 115 X. Tan, X. Wang, X. Wang, Y. Wang, C. Li and D. Xia, NiCo₂S₄ yolk–shell hollow spheres with physical and chemical interaction toward polysulfides for advanced lithium–sulfur batteries, *Ionics*, 2019, **25**, 4047–4056.
- 116 X. Y. Yu, L. Yu and X. W. Lou, Metal sulfide hollow nanostructures for electrochemical energy storage, *Adv. Energy Mater.*, 2016, **6**, 1501333.
- 117 L. Zhou, Z. Zhuang, H. Zhao, M. Lin, D. Zhao and L. Mai, Intricate hollow structures: controlled synthesis and applications in energy storage and conversion, *Adv. Mater.*, 2017, **29**, 1602914.
- 118 N. Mosavati, S. O. Salley and K. S. Ng, Characterization and electrochemical activities of nanostructured transition metal nitrides as cathode materials for lithium sulfur batteries, *J. Power Sources*, 2017, **340**, 210–216.
- 119 X. Lu, G. Wang, T. Zhai, M. Yu, S. Xie, Y. Ling, C. Liang, Y. Tong and Y. Li, Stabilized TiN nanowire arrays for high-performance and flexible supercapacitors, *Nano Lett.*, 2012, **12**, 5376–5381.
- 120 B. Avasarala and P. Haldar, Electrochemical oxidation behavior of titanium nitride based electrocatalysts under PEM fuel cell conditions, *Electrochim. Acta*, 2010, **55**, 9024–9034.
- 121 Z. Cui, C. Zu, W. Zhou, A. Manthiram and J. B. Goodenough, Mesoporous Titanium Nitride-Enabled Highly Stable Lithium–Sulfur Batteries, *Adv. Mater.*, 2016, **28**, 6926–6931.
- 122 T.-G. Jeong, D. S. Choi, H. Song, J. Choi, S.-A. Park, S. H. Oh, H. Kim, Y. Jung and Y.-T. Kim, Heterogeneous catalysis for lithium–sulfur batteries: enhanced rate performance by promoting polysulfide fragmentations, *ACS Energy Lett.*, 2017, **2**, 327–333.
- 123 X. Xiao, H. Wang, W. Bao, P. Urbankowski, L. Yang, Y. Yang, K. Maleski, L. Cui, S. J. Billinge and G. Wang, Two-Dimensional Arrays of Transition Metal Nitride Nanocrystals, *Adv. Mater.*, 2019, **31**, 1902393.
- 124 W. G. Lim, C. Jo, A. Cho, J. Hwang, S. Kim, J. W. Han and J. Lee, Approaching ultrastable high-rate Li–S batteries through hierarchically porous titanium nitride synthesized by multiscale phase separation, *Adv. Mater.*, 2019, **31**, 1806547.
- 125 X. Liu, Y. Zhang, T. Wu and J. Huang, Hierarchical nanotubular titanium nitride derived from natural cellulose substance and its electrochemical properties, *Chem. Commun.*, 2012, **48**, 9992–9994.
- 126 C. Li, J. Shi, L. Zhu, Y. Zhao, J. Lu and L. Xu, Titanium nitride hollow nanospheres with strong lithium polysulfide chemisorption as sulfur hosts for advanced lithium–sulfur batteries, *Nano Res.*, 2018, **11**, 4302–4312.
- 127 J. Luo, J. Zheng and B. Dang, Hollow TiN Nanospheres as Advanced Host Materials for High Performance Lithium–Sulfur Batteries, *ChemistrySelect*, 2019, **4**, 14027–14030.
- 128 L. Chen, W. Yang, H. Zhang, J. Liu and Y. Zhou, Self-templated preparation of hollow mesoporous TiN microspheres as sulfur

- host materials for advanced lithium–sulfur batteries, *J. Mater. Sci.*, 2018, **53**, 10363–10371.
- 129 D.-R. Deng, T.-H. An, Y.-J. Li, Q.-H. Wu, M.-S. Zheng and Q.-F. Dong, Hollow porous titanium nitride tubes as a cathode electrode for extremely stable Li–S batteries, *J. Mater. Chem. A*, 2016, **4**, 16184–16190.
- 130 Z. Sun, J. Zhang, L. Yin, G. Hu, R. Fang, H.-M. Cheng and F. Li, Conductive porous vanadium nitride/graphene composite as chemical anchor of polysulfides for lithium-sulfur batteries, *Nat. Commun.*, 2017, **8**, 1–8.
- 131 L. Ma, H. Yuan, W. Zhang, G. Zhu, Y. Wang, Y. Hu, P. Zhao, R. Chen, T. Chen and J. Liu, Porous-shell vanadium nitride nanobubbles with ultrahigh areal sulfur loading for high-capacity and long-life lithium–sulfur batteries, *Nano Lett.*, 2017, **17**, 7839–7846.
- 132 W. Ren, L. Xu, L. Zhu, X. Wang, X. Ma and D. Wang, Cobalt-doped vanadium nitride yolk–shell nanospheres@ carbon with physical and chemical synergistic effects for advanced Li–S batteries, *ACS Appl. Mater. Interfaces*, 2018, **10**, 11642–11651.
- 133 X. Liang, A. Garsuch and L. F. Nazar, Sulfur Cathodes Based on Conductive MXene Nanosheets for High-Performance Lithium–Sulfur Batteries, *Angew. Chem., Int. Ed.*, 2015, **54**, 3907–3911.
- 134 X. Liang, Y. Rangom, C. Y. Kwok, Q. Pang and L. F. Nazar, Interwoven MXene Nanosheet/Carbon-Nanotube Composites as Li–S Cathode Hosts, *Adv. Mater.*, 2017, **29**, 1603040.
- 135 Z. Wang, X. Xu, Z. Liu, S. Ji, S. O. A. Idris and J. Liu, Hollow spheres of Mo₂C@ C as synergistically confining sulfur host for superior Li–S battery cathode, *Electrochim. Acta*, 2020, **332**, 135482.
- 136 Y. Xiao, Y. Liu, G. Qin, P. Han, X. Guo, S. Cao and F. Liu, Building MoSe₂-Mo₂C incorporated hollow fluorinated carbon fibers for Li-S batteries, *Composites, Part B*, 2020, 108004.
- 137 H. Zhang, H. Cui, J. Li, Y. Liu, Y. Yang and M. Wang, Frogspawn inspired hollow Fe₃C@ N–C as an efficient sulfur host for high-rate lithium–sulfur batteries, *Nanoscale*, 2019, **11**, 21532–21541.
- 138 Y. Mi, W. Liu, X. Li, J. Zhuang, H. Zhou and H. Wang, High-performance Li–S battery cathode with catalyst-like carbon nanotube-MoP promoting polysulfide redox, *Nano Res.*, 2017, **10**, 3698–3705.
- 139 Y. Zhong, L. Yin, P. He, W. Liu, Z. Wu and H. Wang, Surface Chemistry in Cobalt Phosphide-Stabilized Lithium–Sulfur Batteries, *J. Am. Chem. Soc.*, 2018, **140**, 1455–1459.
- 140 Y. Yang, Y. Zhong, Q. Shi, Z. Wang, K. Sun and H. Wang, Electrocatalysis in lithium sulfur batteries under lean electrolyte conditions, *Angew. Chem., Int. Ed.*, 2018, **130**, 15775–15778.
- 141 J. Cheng, D. Zhao, L. Fan, X. Wu, M. Wang, N. Zhang and K. Sun, Ultra-high rate Li–S batteries based on a novel conductive Ni₂P yolk–shell material as the host for the S cathode, *J. Mater. Chem. A*, 2017, **5**, 14519–14524.
- 142 Z. Ye, Y. Jiang, J. Qian, W. Li, T. Feng, L. Li, F. Wu and R. Chen, Exceptional adsorption and catalysis effects of hollow polyhedra/carbon nanotube confined CoP nanoparticles superstructures for enhanced lithium–sulfur batteries, *Nano Energy*, 2019, **64**, 103965.
- 143 F. Ma, X. Wang, J. Wang, Y. Tian, J. Liang, Y. Fan, L. Wang, T. Wang, R. Cao and S. Jiao, Phase-transformed Mo₄P₃ nanoparticles as efficient catalysts towards lithium polysulfide conversion for lithium–sulfur battery, *Electrochim. Acta*, 2020, **330**, 135310.
- 144 M. Sharon and G. Tamizhmani, Transition metal phosphide semiconductors for their possible use in photoelectrochemical cells and solar chargeable battery (Saur Vidyut Kosh V), *J. Mater. Sci.*, 1986, **21**, 2193–2201.
- 145 S. T. Oyama, Novel catalysts for advanced hydro-processing: transition metal phosphides, *J. Catal.*, 2003, **216**, 343–352.
- 146 X.-Q. Niu, X.-L. Wang, D.-H. Wang, Y. Li, Y.-J. Zhang, T. Yang, T. Yu and J.-P. Tu, Metal hydroxide—a new stabilizer for the construction of sulfur/carbon composites as high-performance cathode materials for lithium–sulfur batteries, *J. Mater. Chem. A*, 2015, **3**, 17106–17112.
- 147 J. Jiang, J. Zhu, W. Ai, X. Wang, Y. Wang, C. Zou, W. Huang and T. Yu, Encapsulation of sulfur with thin-layered nickel-based hydroxides for long-cyclic lithium–sulfur cells, *Nat. Commun.*, 2015, **6**, 8622.
- 148 F. Song and X. Hu, Exfoliation of layered double hydroxides for enhanced oxygen evolution catalysis, *Nat. Commun.*, 2014, **5**, 1–9.
- 149 G. Fan, F. Li, D. G. Evans and X. Duan, Catalytic applications of layered double hydroxides: recent advances and perspectives, *Chem. Soc. Rev.*, 2014, **43**, 7040–7066.
- 150 K.-H. Goh, T.-T. Lim and Z. Dong, Application of layered double hydroxides for removal of oxyanions: a review, *Water Res.*, 2008, **42**, 1343–1368.
- 151 J. Zhang, H. Hu, Z. Li and X. W. Lou, Double-shelled nanocages with cobalt hydroxide inner shell and layered double hydroxides outer shell as high-efficiency polysulfide mediator for lithium–sulfur batteries, *Angew. Chem., Int. Ed.*, 2016, **55**, 3982–3986.
- 152 J. Zhang, Z. Li, Y. Chen, S. Gao and X. W. Lou, Nickel–iron layered double hydroxide hollow polyhedrons as a superior sulfur host for lithium–sulfur batteries, *Angew. Chem., Int. Ed.*, 2018, **57**, 10944–10948.
- 153 C. Dai, L. Hu, M.-Q. Wang, Y. Chen, J. Han, J. Jiang, Y. Zhang, B. Shen, Y. Niu and S.-J. Bao, Uniform α -Ni(OH)₂ hollow spheres constructed from ultrathin nanosheets as efficient polysulfide mediator for long-term lithium-sulfur batteries, *Energy Storage Mater.*, 2017, **8**, 202–208.
- 154 Y.-J. Li, J.-M. Fan, M.-S. Zheng and Q.-F. Dong, A novel synergistic composite with multi-functional effects for high-performance Li–S batteries, *Energy Environ. Sci.*, 2016, **9**, 1998–2004.
- 155 E.-i. Negishi and L. Anastasia, Palladium-Catalyzed Alkylation, *Chem. Rev.*, 2003, **103**, 1979–2018.
- 156 A. F. Littke and G. C. Fu, Palladium-Catalyzed Coupling Reactions of Aryl Chlorides, *Angew. Chem., Int. Ed.*, 2002, **41**, 4176–4211.

- 157 E. Antolini, Palladium in fuel cell catalysis, *Energy Environ. Sci.*, 2009, **2**, 915–931.
- 158 S. Ma, L. Wang, Y. Wang, P. Zuo, M. He, H. Zhang, L. Ma, T. Wu and G. Yin, Palladium nanocrystals-embedded mesoporous hollow carbon spheres with enhanced electrochemical kinetics for high performance lithium sulfur batteries, *Carbon*, 2019, **143**, 878–889.
- 159 X.-F. Yang, A. Wang, B. Qiao, J. Li, J. Liu and T. Zhang, Single-atom catalysts: a new frontier in heterogeneous catalysis, *Acc. Chem. Res.*, 2013, **46**, 1740–1748.
- 160 C. Wang, H. Song, C. Yu, Z. Ullah, Z. Guan, R. Chu, Y. Zhang, L. Zhao, Q. Li and L. Liu, Iron single-atom catalyst anchored on nitrogen-rich MOF-derived carbon nanocage to accelerate polysulfide redox conversion for lithium sulfur batteries, *J. Mater. Chem. A*, 2020, **8**, 3421–3430.
- 161 B. Wang, F. Jin, Y. Xie, H. Luo, F. Wang, T. Ruan, D. Wang, Y. Zhou and S. Dou, Holey graphene modified LiFePO₄ hollow microsphere as an efficient binary sulfur host for high-performance lithium-sulfur batteries, *Energy Storage Mater.*, 2020, **26**, 433–442.
- 162 D. Su, M. Cortie, H. Fan and G. Wang, Prussian Blue Nanocubes with an Open Framework Structure Coated with PEDOT as High-Capacity Cathodes for Lithium-Sulfur Batteries, *Adv. Mater.*, 2017, **29**, 1700587.
- 163 M. Ashuri, H. Dunya, Z. Yue, D. Alramahi, X. Mei, K. Kucuk, S. Aryal, C. U. Segre and B. K. Mandal, Enhancement in Electrochemical Performance of Lithium-Sulfur Cells through Sulfur Encapsulation in Hollow Carbon Nanospheres Coated with Ultra-Thin Aluminum Fluoride Layer, *ChemistrySelect*, 2019, **4**, 12622–12629.
- 164 Y. Fu and A. Manthiram, Core-shell structured sulfur-polypyrrole composite cathodes for lithium-sulfur batteries, *RSC Adv.*, 2012, **2**, 5927–5929.
- 165 Y. Xie, H. Zhao, H. Cheng, C. Hu, W. Fang, J. Fang, J. Xu and Z. Chen, Facile large-scale synthesis of core-shell structured sulfur@ polypyrrole composite and its application in lithium-sulfur batteries with high energy density, *Appl. Energy*, 2016, **175**, 522–528.
- 166 Y. Liu, W. Yan, X. An, X. Du, Z. Wang, H. Fan, S. Liu, X. Hao and G. Guan, A polypyrrole hollow nanosphere with ultra-thin wrinkled shell: Synergistic trapping of sulfur in Lithium-Sulfur batteries with excellent elasticity and buffer capability, *Electrochim. Acta*, 2018, **271**, 67–76.
- 167 T. Ben, C. Pei, D. Zhang, J. Xu, F. Deng, X. Jing and S. Qiu, Gas storage in porous aromatic frameworks (PAFs), *Energy Environ. Sci.*, 2011, **4**, 3991–3999.
- 168 L. J. Murray, M. Dincă and J. R. Long, Hydrogen storage in metal-organic frameworks, *Chem. Soc. Rev.*, 2009, **38**, 1294–1314.
- 169 B. Guo, T. Ben, Z. Bi, G. M. Veith, X.-G. Sun, S. Qiu and S. Dai, Highly dispersed sulfur in a porous aromatic framework as a cathode for lithium-sulfur batteries, *Chem. Commun.*, 2013, **49**, 4905–4907.
- 170 J. Zheng, J. Tian, D. Wu, M. Gu, W. Xu, C. Wang, F. Gao, M. H. Engelhard, J.-G. Zhang, J. Liu and J. Xiao, Lewis Acid-Base Interactions between Polysulfides and Metal Organic Framework in Lithium Sulfur Batteries, *Nano Lett.*, 2014, **14**, 2345–2352.
- 171 M. Du, Q. Li, Y. Zhao, C.-S. Liu and H. Pang, A review of electrochemical energy storage behaviors based on pristine metal-organic frameworks and their composites, *Coord. Chem. Rev.*, 2020, **416**, 213341.
- 172 P. Geng, S. Cao, X. Guo, J. Ding, S. Zhang, M. Zheng and H. Pang, Polypyrrole coated hollow metal-organic framework composites for lithium-sulfur batteries, *J. Mater. Chem. A*, 2019, **7**, 19465–19470.
- 173 B. Q. Li, S. Y. Zhang, L. Kong, H. J. Peng and Q. Zhang, Porphyrin organic framework hollow spheres and their applications in lithium-sulfur batteries, *Adv. Mater.*, 2018, **30**, 1707483.
- 174 B. Zhang, X. Qin, G. Li and X. Gao, Enhancement of long stability of sulfur cathode by encapsulating sulfur into micropores of carbon spheres, *Energy Environ. Sci.*, 2010, **3**, 1531–1537.
- 175 Z. Li, L. Yuan, Z. Yi, Y. Sun, Y. Liu, Y. Jiang, Y. Shen, Y. Xin, Z. Zhang and Y. Huang, Insight into the electrode mechanism in lithium-sulfur batteries with ordered microporous carbon confined sulfur as the cathode, *Adv. Energy Mater.*, 2014, **4**, 1301473.
- 176 Y. Dong and T. Ben, Impregnated Sulfur in Carbonized Nitrogen-containing Porous Organic Frameworks as Cathode with High Rate Performance and Long Cycle Life for Lithium-sulfur Batteries, *Chem. Res. Chin. Univ.*, 2019, **35**, 654–661.
- 177 G. He, S. Evers, X. Liang, M. Cuisinier, A. Garsuch and L. F. Nazar, Tailoring Porosity in Carbon Nanospheres for Lithium-Sulfur Battery Cathodes, *ACS Nano*, 2013, **7**, 10920–10930.
- 178 T. Chen, L. Ma, B. Cheng, R. Chen, Y. Hu, G. Zhu, Y. Wang, J. Liang, Z. Tie, J. Liu and Z. Jin, Metallic and polar Co₉S₈ inlaid carbon hollow nanopolyhedra as efficient polysulfide mediator for lithium-sulfur batteries, *Nano Energy*, 2017, **38**, 239–248.
- 179 Y. Ye, F. Wu, S. Xu, W. Qu, L. Li and R. Chen, Designing realizable and scalable techniques for practical lithium sulfur batteries: a perspective, *J. Phys. Chem. Lett.*, 2018, **9**, 1398–1414.
- 180 A. Eftekhari and D.-W. Kim, Cathode materials for lithium-sulfur batteries: a practical perspective, *J. Mater. Chem. A*, 2017, **5**, 17734–17776.
- 181 J. Lochala, D. Liu, B. Wu, C. Robinson and J. Xiao, Research progress toward the practical applications of lithium-sulfur batteries, *ACS Appl. Mater. Interfaces*, 2017, **9**, 24407–24421.
- 182 A. Bhargav, J. He, A. Gupta and A. Manthiram, Lithium-sulfur batteries: attaining the critical metrics, *Joule*, 2020, **4**, 285–291.
- 183 H. Yuan, J. Liu, Y. Lu, C. Zhao, X. Cheng, X. Nan, Q. Liu, J. Huang and Q. Zhang, Toward Practical All-solid-state Batteries with Sulfide Electrolyte: A Review, *Chem. Res. Chin. Univ.*, 2020, **36**, 377–385.

- 184 M. Rana, B. Luo, M. Kaiser, I. Gentle and R. Knibbe, The role of functional materials to produce high areal capacity lithium sulfur battery, *J. Energy Chem.*, 2020, **46**, 195–209.
- 185 M. Rana, S. Ahad, M. Li, B. Luo, L. Wang, I. Gentle and R. Knibbe, Review on areal capacities and long-term cycling performances of lithium sulfur battery at high sulfur loading, *Energy Stor. Mater.*, 2019, **18**, 289–310.
- 186 H. Wang and Y. Tang, Artificial Solid Electrolyte Interphase Acting as “Armor” to Protect the Anode Materials for High-performance Lithium-ion Battery, *Chem. Res. Chin. Univ.*, 2020, **36**, 402–409.