

Cite this: *J. Mater. Chem. A*, 2022, 10, 2280

# Unraveling the evolution of exsolved Fe–Ni alloy nanoparticles in Ni-doped $\text{La}_{0.3}\text{Ca}_{0.7}\text{Fe}_{0.7}\text{Cr}_{0.3}\text{O}_{3-\delta}$ and their role in enhancing $\text{CO}_2$ –CO electrocatalysis†

Haris Masood Ansari,<sup>a</sup> Adam Stuart Bass,<sup>a</sup> Nabeel Ahmad<sup>b</sup> and Viola I. Birss<sup>a\*</sup>

The growth and phase evolution characteristics of exsolved metal nanoparticles (NPs) in a Ni-doped  $\text{La}_{0.3}\text{Ca}_{0.7}\text{Fe}_{0.7}\text{Cr}_{0.3}\text{O}_{3-\delta}$  (LCFCrN) perovskite is investigated in  $\text{H}_2$ – $\text{N}_2$  and  $\text{CO}$ – $\text{CO}_2$  environments. Exsolution kinetics are rapid in  $\text{H}_2$ – $\text{N}_2$  while those in  $\text{CO}$ – $\text{CO}_2$  atmospheres are sluggish, possibly due to a combination of  $p\text{O}_2$  difference in excess of three orders of magnitude as compared to that in  $\text{H}_2$ – $\text{N}_2$ , and a different reaction pathway in the two atmospheres. NPs grown in  $\text{H}_2$ – $\text{N}_2$  exhibit a compositional and structural progression from an initially Ni-rich phase to an Fe-rich phase at short and long heat treatment durations, respectively. Once the subsurface Ni depletes, the NPs seem to coarsen via a combination of addition of Fe from the parent perovskite and Ostwald ripening. For longer heat treatment durations, CaO particles are observed to be appended to the Fe–Ni NPs. Exsolution also occurred in  $\text{CO}_2$ – $\text{CO}$  atmospheres exhibiting similar trends, although the composition of the NPs was Ni-rich even after a 25 h reduction treatment in 70 : 30  $\text{CO} : \text{CO}_2$  at 800 °C, indicating that the NPs are resistant to coarsening and stable for use in highly reducing  $\text{CO}$ – $\text{CO}_2$  environments. In reversible solid oxide cells (RSOC) applications, the  $\text{CO}$  oxidation kinetics are typically sluggish on single phase perovskite electrodes. However, for Fe–Ni alloy NP-decorated LCFCrN (Fe–Ni@LCFCrN), the NPs are shown to enhance the  $\text{CO}$  oxidation kinetics (by ca. 75%) and the  $\text{CO}_2$  reduction reaction ( $\text{CO}_2$ -RR) kinetics (by ca. 15%) as compared to the parent material, LCFCr. This makes the Fe–Ni@LCFCrN catalyst equally active for both reactions, hence significantly enhancing its potential for use in reversible solid oxide cell applications.

Received 2nd September 2021  
Accepted 10th October 2021

DOI: 10.1039/d1ta07552g

rsc.li/materials-a

## 1. Introduction

Mixed ion-electron conductors (MIEC) belonging to the perovskite oxide class, with a chemical formula  $\text{ABO}_3$ , are a very promising class of inorganic materials that have gained significant traction in the last decade or so for use as the cathode material in solid oxide electrolysis cells (SOEC) to replace conventional Ni-YSZ cathodes, due to their propensity for loss of activity due to coking,<sup>1,2</sup> as well as Ni oxidation, especially under pure  $\text{CO}_2$ .<sup>3–5</sup> One of the main advantages of the use of MIECs is that they can operate as a single phase in the electrode layers, without the need for the presence of a second ionically conducting phase (typically YSZ), as MIECs typically have both good ionic and electronic conducting properties. This

then can simplify the microstructural requirements of these electrodes, removing the requirement for maximization of the triple phase boundary length, as is the case in Ni-YSZ.

Of the perovskite oxides that have been examined to date, single phase  $\text{La}_{0.3}\text{M}_{0.7}\text{Fe}_{0.7}\text{Cr}_{0.3}\text{O}_{3-\delta}$  (LMFCr, M = Sr, Ca) has emerged as a very promising material, showing exceptionally active and stable performance characteristics at both the cathode (fuel electrode) during  $\text{CO}_2$  reduction as well as during oxygen evolution at the anode (oxygen electrode).<sup>6–8</sup> What is remarkable is the fact that LMFCr exhibits high activity for  $\text{CO}_2$  reduction as well as oxygen evolution in the absence of a second phase, such as doped ceria, which is generally added to perovskites to increase the ionic conductivity and generate a triple phase boundary (TPB) length, that, in turn, enhances performance. Efforts are still underway to further improve the achievable current densities at the lowest overpotentials by using symmetrical SOECs that employ LMFCr at both electrodes.

Furthermore, there is growing interest in RSOCs that can run reversibly in both the fuel cell (SOFC) mode ( $\text{CO}$  oxidation) as

<sup>a</sup>Department of Chemistry, University of Calgary, 2500 University Dr NW, Calgary, AB T2N1N4, Canada. E-mail: birss@ucalgary.ca

<sup>b</sup>Rosalind Franklin Institute, Harwell Campus, Didcot, OX11 0FA, UK

† Electronic supplementary information (ESI) available. See DOI: 10.1039/d1ta07552g

well as the SOEC mode (CO<sub>2</sub> reduction). This could enable using off-peak renewable electricity for electrolysis of CO<sub>2</sub> (and possibly H<sub>2</sub>O) to produce fuel (CO and H<sub>2</sub>), and, *vice versa*, converting the fuel back to electricity during peak demand, all using the same RSOC. However, although single phase LMFCr shows a reasonable performance for CO oxidation, much like other similar perovskites, the CO oxidation activity is sluggish as compared to that for the CO<sub>2</sub> reduction reaction (CO<sub>2</sub>-RR).<sup>7,9,10</sup> Therefore, it is imperative to explore means to improve the CO oxidation activity of LMFCr and make it equivalent to the activity for CO<sub>2</sub>-RR to enhance its applicability in RSOC applications.

In the last few years, there has been a growing interest in employing nanomaterials and nano-engineering approaches to enhance the stability and performance of perovskite electrode materials. Metal nanoparticle (NP) infiltration and *in situ* metal NP exsolution are two such methods by which electrode performance can be improved.<sup>11–15</sup> Of these two, exsolution offers more benefits in terms of exercising control over the size and areal density of the NPs and their stability towards coking and agglomeration during operation.<sup>16–18</sup> Perovskite oxides, such as La<sub>0.3</sub>Ca<sub>0.7</sub>Fe<sub>0.7</sub>Cr<sub>0.3</sub>O<sub>3–δ</sub> (LCFCr), are a particularly versatile class of materials with properties that can be tailored by doping a variety of cations into either the A-site or the B-site.<sup>19</sup> By placing reducible/redox active cations on the B-site, there is a possibility of producing metal catalyst NPs on the perovskite backbone by exsolution.<sup>20</sup>

In material systems that do not readily exsolve B-site cations, an A-site deficiency helps to facilitate exsolution from the B-site, and in turn, inhibits the formation of undesirable reaction products, such as phases containing A-site cations.<sup>21</sup> The NPs are strongly anchored to the parent perovskite backbone, which is the defining factor in their excellent long-term stability and coking resistance.<sup>22</sup> The NPs not only provide active sites for CO<sub>2</sub>/CO adsorption but also increase the catalytically active surface area.<sup>23,24</sup> *In situ* NP exsolution has been demonstrated in a variety of perovskite systems, such as La<sub>0.52</sub>Sr<sub>0.28</sub>Ni<sub>0.06</sub>Ti<sub>0.94</sub>O<sub>3</sub>,<sup>21</sup> La<sub>0.43</sub>Ca<sub>0.37</sub>Ni<sub>0.03</sub>Fe<sub>0.03</sub>Ti<sub>0.94</sub>O<sub>3–γ</sub>,<sup>25</sup> La<sub>0.6</sub>Sr<sub>0.4</sub>Fe<sub>0.8</sub>Ni<sub>0.2</sub>O<sub>3–δ</sub>,<sup>9</sup> La<sub>0.6</sub>Ca<sub>0.4</sub>Fe<sub>0.8</sub>Ni<sub>0.2</sub>O<sub>3–δ</sub>,<sup>26</sup> La<sub>0.3</sub>Sr<sub>0.7</sub>Cr<sub>0.3</sub>Fe<sub>0.6</sub>Co<sub>0.1</sub>O<sub>3–δ</sub>,<sup>27</sup> Sr<sub>1.95</sub>Fe<sub>1.35</sub>Mo<sub>0.45</sub>Ni<sub>0.2</sub>O<sub>6–δ</sub>,<sup>24</sup> and, Pr<sub>0.5</sub>Ba<sub>0.5</sub>Mn<sub>0.9</sub>Co<sub>0.1</sub>O<sub>3</sub>,<sup>28</sup> to name a few.

Employment of Ni or Co-doped perovskites as cathodes for the electrolysis (or oxidation) of CO<sub>2</sub> (CO) requires exposure of the cathode (or fuel electrode) to a reducing atmosphere, typically 5 : 95 H<sub>2</sub> : N<sub>2</sub> (or Ar), for a few hours at the SOEC operating temperature, typically 800–900 °C. This ensures that the exposed surfaces of the porous cathode are decorated with a reasonable population of metal NPs with sub-100 nm sizes. During CO<sub>2</sub> reduction and CO oxidation, the fuel electrode is exposed to CO<sub>2</sub>-CO atmospheres having a *p*O<sub>2</sub> ranging from 10<sup>–7</sup> to 10<sup>–27</sup> atm (assuming 0.01% CO in pure CO<sub>2</sub> and 0.01% CO<sub>2</sub> in pure CO, respectively). As will be shown later in this paper, exsolution of metal NPs from Ni-doped LCFCr can occur in 5 : 95 CO : CO<sub>2</sub> having a *p*O<sub>2</sub> that is several orders of magnitude lower (~10<sup>–16</sup> atm) than that in 5 : 95 H<sub>2</sub> : N<sub>2</sub> (*p*O<sub>2</sub> < 10<sup>–23</sup> atm). However, the vast majority of the literature on exsolution is based on reduction in H<sub>2</sub> prior to CO<sub>2</sub> electrolysis,

even though the fuel electrode is mostly exposed to CO<sub>2</sub>-CO atmospheres during CO<sub>2</sub> reduction and CO oxidation. According to our knowledge, there are no reports in literature on the formation, evolution, and stability of NPs exsolved in CO<sub>2</sub>-CO atmospheres and the similarities and differences with those formed in H<sub>2</sub>.

In this paper, we have employed 5 mol% A-site deficient compositions of LCFCr ((La<sub>0.3</sub>Ca<sub>0.7</sub>)<sub>0.95</sub>Fe<sub>0.7</sub>Cr<sub>0.25</sub>Ni<sub>0.05</sub>O<sub>3–δ</sub>) with a 5 mol% B-site doping of Ni to demonstrate the robustness of the system toward *in situ* NP exsolution and the excellent NP size tunability it affords for relatively short reduction times at 750–800 °C. We also compare exsolution trends in two different gas environments, namely H<sub>2</sub>-N<sub>2</sub> and CO<sub>2</sub>-CO, with *p*O<sub>2</sub> ranging from *ca.* 10<sup>–16</sup> to < 10<sup>–23</sup> atm, to highlight the difference in NPs characteristics in the two gas environments. Finally, we demonstrate the enhancement of CO<sub>2</sub> reduction kinetics and especially CO oxidation activity due to the NPs anchored on the parent perovskite surface.

## 2. Experimental methods

(La<sub>0.3</sub>Ca<sub>0.7</sub>)<sub>0.95</sub>Fe<sub>0.7</sub>Cr<sub>0.25</sub>Ni<sub>0.05</sub>O<sub>3–δ</sub> (LCFCrN) powder was prepared by dissolving La(NO<sub>3</sub>)<sub>3</sub>·6H<sub>2</sub>O, Ca(NO<sub>3</sub>)<sub>2</sub>·4H<sub>2</sub>O, Fe(NO<sub>3</sub>)<sub>3</sub>·9H<sub>2</sub>O, Cr(NO<sub>3</sub>)<sub>3</sub>·9H<sub>2</sub>O and Ni(NO<sub>3</sub>)<sub>2</sub>·6H<sub>2</sub>O (Alfa Aesar, USA) in DI water (100 mL) according to the desired stoichiometry. Glycine was added in a 2 : 1 mole ratio *versus* the total metal content and the mixture was heated at 375 °C on a hot plate until auto ignition. The ash was calcined in a high temperature furnace at 1200 °C for 2 h and then ball milled in an isopropanol medium and zirconia balls at 150 rpm for 4 h. The milled powder was uniaxially pressed into pellets at 200 MPa, and then sintered in air at 1200 °C for 8 h. Both powder and pellet samples were exposed to flowing 5 : 95 H<sub>2</sub> : N<sub>2</sub> or *X* CO : (100 – *X*) CO<sub>2</sub> (*X* = 5–95) in a tube furnace at 750–800 °C for 1–50 h (the *p*O<sub>2</sub> of the gas mixtures used in this work is listed in Table S1†). The furnace was ramped up at 5 °C min<sup>–1</sup> in N<sub>2</sub> (20 sccm) and allowed to stabilize for 15 minutes upon reaching the temperature set point before introducing the reducing gases at a total flow rate of 20 sccm. Upon completion of the reduction treatment, N<sub>2</sub> was reintroduced for 15 min at temperature after which the furnace was ramped down at 5 °C min to room temperature in flowing N<sub>2</sub>.

Field emission scanning electron microscopy was performed on a Zeiss Sigma FEG-SEM. X-ray diffraction was carried out over a 2θ range of 20–80° (step size = 0.02°, time per step = 1 s) on Bruker D8 and Rigaku Multiflex-1200 XRD spectrometers with Cu K<sub>α</sub> radiation. High Angle Annular Dark Field (HAADF) Scanning Transmission Electron microscopy (STEM) and Energy Dispersive Spectroscopy (EDS) were performed using a FEI Titan Themis STEM.

The electrochemical performance of LCFCrN was evaluated using symmetrical cells, where single phase LCFCrN powder was mixed with an ink vehicle in a 1 : 1 ratio (by weight) and screen printed on an area of *ca.* 0.53 cm<sup>2</sup> on both sides of 130 μm thick (1 inch in diameter) samaria-doped ceria (SDC)-buffered scandia-stabilized zirconia (ScSZ) electrolytes (Hionic™, Nexceris, USA) followed by firing at 1100 °C for 2 h.

The current collectors were comprised of Au paste, which was painted on both electrodes followed by firing at 825 °C for 1 h, while Au wires were used as the contact leads.

The cells were mounted on an alumina tube and sealed using Ceramabond VFG-552 sealant (Aremco Products, USA) to isolate the fuel and the air sides. Electrochemical performance measurements were carried out at 800 °C under various CO<sub>2</sub>-CO atmospheres (pure CO<sub>2</sub>, 90 : 10, 70 : 30, and 50 : 50 CO<sub>2</sub> : CO). The gas mixtures were chosen to simulate the various environments the fuel electrode could be exposed to under a typical SOC operation. A Solartron 1287/1255 potentiostat/impedance analyzer was used to acquire electrochemical impedance spectra (EIS) in the frequency range of 0.01–65 000 Hz at an AC amplitude of 50 mV. Cyclic voltammograms (CVs) were acquired at a sweep rate of 5 mV s<sup>-1</sup> using a Solartron 1287 interface and Corrware software. Short-term electrochemical stability of the cells was evaluated by 15 minute potentiostatic tests at cell voltages of 1.0, 1.2, 1.4, and 1.6 V, respectively, in pure CO<sub>2</sub>, 90 : 10 and 70 : 30 CO<sub>2</sub> : CO atmospheres. Medium-term stability was evaluated *via* a 10 h potentiostatic test at a cell voltage of 1.3 V in a 70 : 30 CO<sub>2</sub> : CO atmosphere.

### 3. Results and discussion

#### 3.1 Exsolution of Fe-Ni alloy NPs from LCFCrN in H<sub>2</sub>-N<sub>2</sub> environment

Fig. 1(a) shows an XRD pattern of the as-prepared LCFCrN powder. While the parent perovskite (LCFCr) is a pure orthorhombic phase in the space group *Pnma*, the XRD pattern of A-site deficient LCFCrN shows the presence of Fe<sub>2</sub>O<sub>3</sub> and NiO. These impurities have also been observed by Lv *et al.* in A-site

deficient Ni-doped SFMN (Sr<sub>1.95</sub>Fe<sub>1.35</sub>Mo<sub>0.45</sub>Ni<sub>0.2</sub>O<sub>6-δ</sub> and Sr<sub>1.90</sub>Fe<sub>1.35</sub>Mo<sub>0.45</sub>Ni<sub>0.2</sub>O<sub>6-δ</sub>).<sup>24</sup> Lai *et al.* doped a similar material, namely La<sub>0.3</sub>Sr<sub>0.7</sub>Fe<sub>0.7</sub>Cr<sub>0.3</sub>O<sub>3-δ</sub>, with Co to attain the composition (La<sub>0.3</sub>Sr<sub>0.7</sub>)<sub>0.95</sub>Fe<sub>0.6</sub>Cr<sub>0.3</sub>Co<sub>0.1</sub>O<sub>3-δ</sub> and found (Fe,Cr)<sub>3</sub>O<sub>4</sub> impurities in their powder.<sup>27</sup> They argued that a pure phase cannot be attained with 5 mol% A-site deficiency in this material because of the high Sr content and low Cr content. From an electroneutrality viewpoint, the A-site deficiency can either be compensated for by the creation of built-in oxygen vacancies or by an increase in the oxidation state of the B-site cations (since the A-site cations, La<sup>3+</sup> and Ca<sup>2+</sup>, have only one oxidation state). Xiao *et al.* have shown that the oxygen non-stoichiometry ( $\delta$ ) in La<sub>0.3</sub>Ca<sub>0.7</sub>Fe<sub>0.7</sub>Cr<sub>0.3</sub>O<sub>3-δ</sub> is *ca.* 0.05,<sup>29</sup> since Cr prevents oxygen loss due to a strong preference for 6-fold coordination. Charge compensation in these perovskites is achieved by Cr<sup>3+</sup> changing its oxidation state to Cr<sup>4+</sup>, which has a limit set by the amount of Ca<sup>2+</sup> and Cr<sup>3+</sup> present.<sup>27,30</sup> In LCFCrN, the amount of Ca<sup>2+</sup> is high and that of Cr<sup>3+</sup> is low and hence Fe<sub>2</sub>O<sub>3</sub> and NiO impurities are inevitable along with a near-stoichiometric perovskite.<sup>27</sup> Furthermore, a close look at the phase diagrams of the La-Fe-O and La-Cr-O systems shows that the equilibrium A/B ratio in LaFeO<sub>3</sub> and LaCrO<sub>3</sub> in air is close to 1. Since LCFCrN is based on these aforementioned compounds, any deviation from A/B = 1 could very well result in impurity phases.<sup>31,32</sup>

The SEM micrograph in Fig. 1(b) shows the surface of the LCFCrN pellet before reduction, while that in Fig. 1(c) shows the early stages of NP formation when the pellet is reduced in 5 : 95 H<sub>2</sub> : N<sub>2</sub> for 1 h at 800 °C. At this stage, the smaller particles are hemispherical, while the bigger particles begin to facet, such as the large particle with a square base in the SEM image of Fig. 1(d). The NPs are 25–70 nm in size with an average of *ca.*

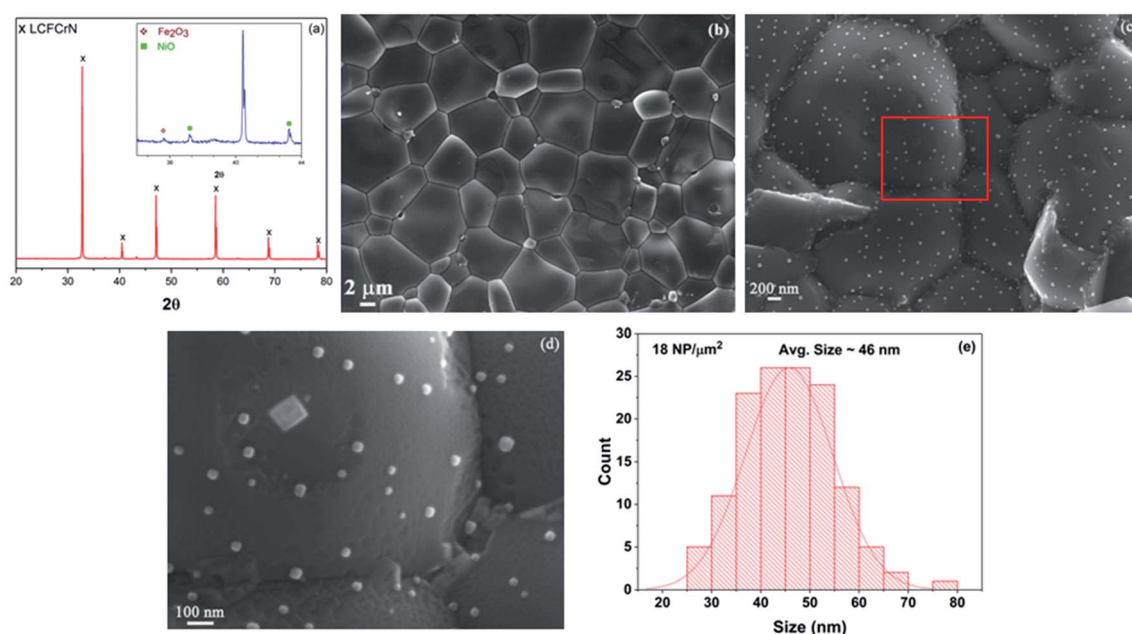


Fig. 1 (a) XRD pattern of the as-prepared LCFCrN powder (inset: narrower  $2\theta$  range showing the Fe<sub>2</sub>O<sub>3</sub> and NiO peaks). (b) SEM micrograph showing the surface of an LCFCrN pellet before the reduction treatment, (c) SEM micrograph showing NPs on the surface of an LCFCrN pellet upon reduction in 5 : 95 H<sub>2</sub> : N<sub>2</sub> atmosphere for 1 h at 800 °C, with (d) showing a higher magnification image of the area highlighted by the red box in (c), and (e) a histogram depicting the NP size distribution.

46 nm and an areal density of *ca.* 18 NPs/ $\mu\text{m}^2$ , as depicted in Fig. 1(e). The robustness of the system to NP exsolution in a  $\text{H}_2$  environment is apparent in that a sizeable NP population with sub-100 nm sizes is observed after only 1 h of reduction treatment at 800 °C, the typical operating temperature of SOCs. The practicality of catalyst systems with exsolved NPs depends on (1) how quickly a reasonable NP population is established on the catalyst surface, (2) the average size of the NPs, and (3) the thermal stability of the NPs. Many SOC catalyst systems have suffered from this practical limitation, whereby the exsolution kinetics were either too sluggish<sup>33</sup> or required temperatures as high as 1400 °C to achieve a reasonable NP population.<sup>34</sup> In some systems, such as  $\text{La}_{0.52}\text{Sr}_{0.28}\text{Ni}_{0.06}\text{Ti}_{0.94}\text{O}_3$ ,<sup>21</sup> the A-site deficiency had to be significantly increased to force NP exsolution. However, these time and temperature requirements to achieve a reasonable NP population still render the system impractical for SOC application.

In the case of LCFCrN, two factors that could determine its strong exsolution capability in  $\text{H}_2$  are the A-site deficiency and the presence of other redox active cations on the B-site, namely Fe and Cr. Under a reducing environment, the loss of lattice oxygen reduces the 6-fold coordination of the B-site cations. Oxygen stripping during exposure to a reducing environment has been identified as a vital factor in the surface segregation of reducible species and their eventual exsolution.<sup>35,36</sup> Haag *et al.* have shown that, in a reducing environment, the oxygen stoichiometry for  $\text{La}_{0.3}\text{Sr}_{0.7}\text{Fe}_{0.7}\text{Cr}_{0.3}\text{O}_{3-\delta}$ , a perovskite similar to LCFCr, is  $\sim 2.65$  ( $\delta \sim 0.35$ ) when B-site cations reduce fully to an oxidation state of +3.<sup>37</sup> This, in turn, destabilizes the perovskite lattice by lowering the co-ordination number of B-site cations and could have a strong influence on forcing B-site exsolution. Sun *et al.* have argued that lattice coordination has a strong influence on the rate of exsolution.<sup>13</sup> Through experiments and density functional theory (DFT) calculations on  $\text{Pr}_{0.5}\text{Ba}_{0.5}\text{Mn}_{0.9}\text{Co}_{0.1}\text{O}_3$ , they have shown that crystal reconstruction and subsequent lowering of the coordination number of B-site cations favors Co NP exsolution in a reducing environment. Since the A-site deficiency in LCFCrN is low in our case, the loss of lattice oxygen and lowering of co-ordination number could be the dominant factor in the speed of exsolution.<sup>35</sup>

It has been shown *via* high temperature AFM studies that the initial stage of NP formation involves the appearance of pits on perovskite surfaces exposed to a reducing atmosphere from where the NPs subsequently emerge.<sup>38</sup> A direct consequence of this is that the NPs are firmly anchored to the parent perovskite, with as much as 30% of the NP residing below the surface.<sup>17</sup> The existence of surface pits is clearly visible in Fig. 1(d) and many NPs seem to have a trench around them. A recent *in situ* TEM study on a  $\text{La}_{0.43}\text{Ca}_{0.37}\text{Ni}_{0.06}\text{Ti}_{0.94}\text{O}_3$  perovskite has shown that the Ni NPs nucleate on the perovskite surface rather than in the bulk and that anchoring is achieved when the expanding NPs push the perovskite lattice around them, causing it to rise around the particles to create a volcano-shaped socket.<sup>39</sup> However, it is unclear from our experiments whether pit formation is a precursor to exsolution and eventual emergence of NPs from them, or whether the pits are formed later when the NPs mound up as they grow and draw material from their vicinity.

To understand the phase evolution of the NPs and the perovskite, first in a  $\text{H}_2$  atmosphere, the as-prepared LCFCrN powder was reduced at two different temperatures, namely 750 and 800 °C, in 5 : 95  $\text{H}_2$  :  $\text{N}_2$  for 1–50 h Fig. 2 shows a series of XRD patterns of LCFCrN after exposure to 5 : 95  $\text{H}_2$  :  $\text{N}_2$  at 750 and 800 °C for 1, 2, and 5 h. Although slightly suppressed peaks of  $\text{Fe}_2\text{O}_3$  and NiO are still visible after a 1 h reduction at 750 °C, these peaks disappear after a 5 h reduction at 750 °C (Fig. 2(a) and (b)). At the same time, peaks for  $\text{FeNi}_3$  (JCPDS 38-0419) appear at  $2\theta$  values of 44.33° and 51.7°. A weak peak at  $2\theta = 43.64^\circ$  is also visible, which belongs to the Fe-rich  $\text{Fe}_{0.64}\text{Ni}_{0.36}$  (JCPDS 47-1405) Fe–Ni alloy. Lv *et al.* reduced  $\text{Sr}_2\text{Fe}_{1.35}\text{Mo}_{0.45}\text{Ni}_{0.2}\text{O}_{6-\delta}$  (SFMN) perovskites in 5 : 95  $\text{H}_2$  : Ar at 700 °C for 2 h and found the surface of the SFMN powder particles decorated with  $\text{FeNi}_3$  NPs,<sup>24</sup> while Liu *et al.* reduced  $\text{La}_{0.6}\text{Sr}_{0.4}\text{Fe}_{0.8}\text{Ni}_{0.2}\text{O}_{3-\delta}$  (LSFN) in 5 : 95  $\text{H}_2$  :  $\text{N}_2$  at 850 °C for 2 h and observed  $\text{Fe}_{0.64}\text{Ni}_{0.36}$  NPs on the surface of LSFN.<sup>9</sup> That we observe both  $\text{FeNi}_3$  and  $\text{Fe}_{0.64}\text{Ni}_{0.36}$  NPs could be due to the combination of a lower temperature as compared to that employed by Liu *et al.* and a longer reduction time compared to that used by Lv *et al.*

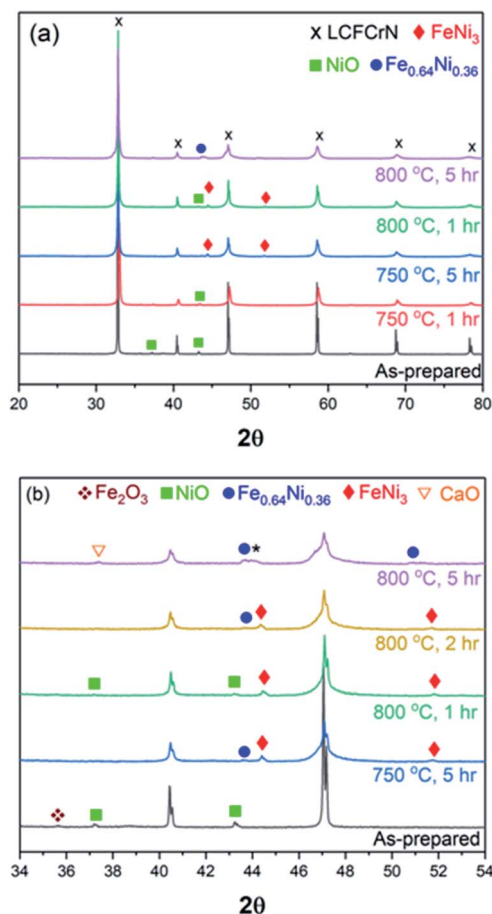


Fig. 2 X-ray diffraction patterns of (a) as-prepared LCFCrN, LCFCrN exposed to 5 : 95  $\text{H}_2$  :  $\text{N}_2$  at 750 °C for 1 and 5 h, and 800 °C for 1 and 5 h, respectively, and (b) patterns over a narrower  $2\theta$  range, showing the phase evolution upon reduction of LCFCrN at 750 °C for 5 h and 800 °C for 1, 2, and 5 h, respectively.



Another factor that could be at play in determining the NP composition/stoichiometry is the amount of dopant present, which in our case is 5 mol%, while it was 10–20 mol% in the two aforementioned cases.<sup>9,24</sup> Our results suggest that the first generation NPs that were initially  $\text{FeNi}_3$  coarsened and formed  $\text{Fe}_{0.64}\text{Ni}_{0.36}$  at a later stage, while the next generation of NPs with a  $\text{FeNi}_3$  composition nucleated at the same time. This also suggests that the NP size and composition can be tuned in LCFCrN to suit the application by varying the reduction temperature and duration. It is hardly surprising that the NPs formed at lower temperatures or short reduction durations are Ni-rich, since the Gibb's free energy change for  $\text{Ni}^{2+} \rightarrow \text{Ni}^0$  reduction ( $\Delta G_r$ ) is highly negative at 800 °C, while that for  $\text{Fe}^{2+} \rightarrow \text{Fe}^0$  is less negative.<sup>40</sup> All the other cations in LCFCrN have a positive  $\Delta G_r$  value and hence are stable in reducing environments and thus do not exsolve.

Increasing the reduction temperature to 800 °C for 1 h results in an XRD pattern similar to the one obtained after a 5 h reduction at 750 °C, although weak NiO peaks are still visible (Fig. 2). These NiO peaks disappear when the reduction duration was increased to 2 h, while a weak  $\text{Fe}_{0.64}\text{Ni}_{0.36}$  peak appears at a  $2\theta$  value of 43.65°. The NPs formed under these conditions are composed predominantly of  $\text{FeNi}_3$ , while the parent perovskite peaks shift to higher  $2\theta$ , suggesting a lattice contraction. A longer reduction duration at 800 °C (5 h) resulted in NPs with a mixed  $\text{Fe}_{0.64}\text{Ni}_{0.36}$  and  $\text{FeNi}_3$  composition, although the NP stoichiometry possibly deviates from  $\text{Fe}_{0.64}\text{Ni}_{0.36}$  and  $\text{FeNi}_3$ , which causes peak shifts such as indicated by \* in Fig. 2(b).

Exsolution is often accompanied by the formation of AO type oxides<sup>9,21</sup> and, in this case too, CaO peaks appear after a 5 h reduction at 800 °C, possibly as a consequence of loss of  $\text{Fe}^{3+}$  from the B-site and a strong affinity of the system to revert to  $\text{ABO}_3$  stoichiometry. Neagu *et al.* have suggested that increasing the perovskite A-site deficiency ( $\geq 0.1$ ) could circumvent the formation of AO byproduct and also produce a stable residual perovskite.<sup>41</sup> In this work, we have employed an A-site deficiency of 0.05 and have used native perovskite surfaces rather than cleaved bulk surfaces. It is shown in literature that native surfaces undergo A-cation surface segregation<sup>21,27</sup>, which could interfere with the exsolution process and also promote the formation of the AO byproduct. However, for real SOC catalysts, their native surfaces, rather than cleaved bulks, are exposed to the process gases. Also, as we have already shown (Fig. 1(c)), the exsolution process in LCFCrN does not seem to be inhibited in any way by the use of native surfaces and hence we did not use cleaved bulk surfaces in this work. Fig. 1(c) shows that the entire surface of the LCFCrN pellet is uniformly covered with NPs even after 1 h exposure to 5 : 95  $\text{H}_2$  :  $\text{N}_2$  at 800 °C. The system is so robust that lower growth temperatures can also be employed and the size and areal density of the NPs can be tuned by varying the time of reduction treatment.

Fig. 3 shows a series of SEM micrographs, displaying the surfaces of LCFCrN pellet samples, reduced at 750 and 800 °C for 5 and 25 h, respectively. The dark phase adjoining the NPs in Fig. 3(b–d) appears to be CaO, since it was evident in the XRD pattern in Fig. 2. Similar oxide growth attached to the NPs has also been observed by Neagu *et al.* in  $\text{La}_{0.8}\text{Ce}_{0.1}\text{Ti}_{0.6}\text{Ni}_{0.4}\text{O}_3$ ,<sup>39</sup> as

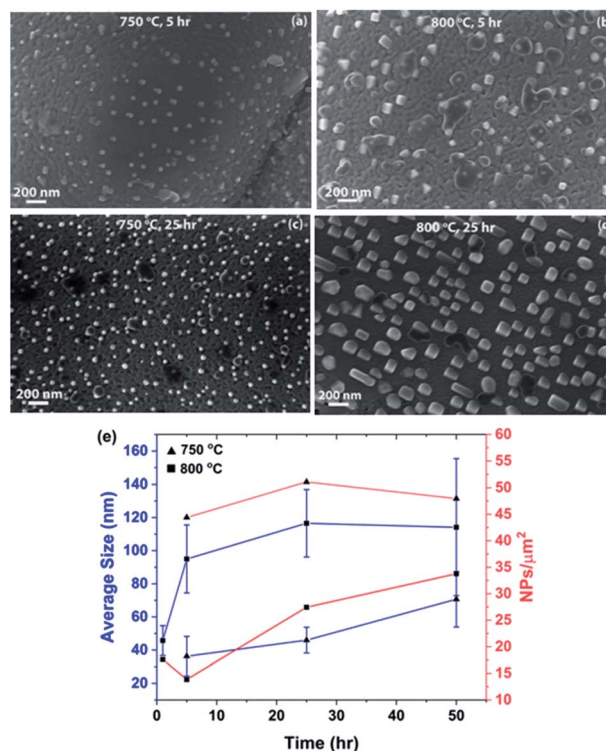


Fig. 3 SEM micrographs showing the metal NPs on the surface of LCFCrN pellets, formed upon exposure to 5 : 95  $\text{H}_2$  :  $\text{N}_2$  for (a) 5 h at 750 °C, (b) 5 h at 800 °C, (c) 25 h at 750 °C, and (d) 25 h at 800 °C. (e) Plots of NP average size and areal density vs. heat treatment duration.

well as Thalinger *et al.* in  $\text{La}_{0.6}\text{Sr}_{0.4}\text{FeO}_{3-6}$ .<sup>42</sup> Notably, CaO formation during exsolution may not necessarily have a deleterious effect on the electrochemical performance of the material, as it has been shown to promote  $\text{CO}_2$  adsorption and enhance the electrochemical activity in synergy with exsolved NPs.<sup>26</sup> One feature that is common to all of the micrographs shown in this work is the surface roughness that develops on the surfaces of the LCFCrN grains upon exposure to 5 : 95  $\text{H}_2$  :  $\text{N}_2$  environment. Although others<sup>27,43</sup> have also shown the development of a similar degree of surface roughness, it is unclear whether this is a result of exposure to the reducing atmosphere or the exsolution process, since the grain surfaces are smooth in the as-prepared pellets in air as seen in Fig. 1(b).

The NPs that form at 750 °C in 5 : 95  $\text{H}_2$  :  $\text{N}_2$  are smaller in size and appear to be hemispherical in shape as compared to those formed at 800 °C for the same time duration. Fig. 3(e) shows plots of the NP average size and areal density vs. heat treatment duration. For a 5 h reduction treatment, the NPs formed at 750 °C are 36 nm in size on average with an areal density of *ca.* 44  $\text{NPs}/\mu\text{m}^2$ , while those formed at 800 °C are 95 nm in size with an areal density of *ca.* 14  $\text{NPs}/\mu\text{m}^2$ . The average size of the NPs at both 750 and 800 °C exhibits an increasing trend with the heat treatment duration and the size distribution becomes broader with time (Fig. S1†).

The NPs formed at 800 °C have an initially steep growth rate (Fig. 3(e)), nearly doubling their average size after 5 h, but saturating beyond that point, leading to average sizes of *ca.*

115 nm after 50 h. It is pertinent to mention here that the NP size distribution becomes broader with heat treatment time in the 5 : 95 H<sub>2</sub> : N<sub>2</sub> environment (Fig. S1†), suggesting the presence of two competing processes, namely nucleation and growth. It seems that, after an initial nucleation burst, growth is the dominant process. This could explain the slight decrease in NP areal density between 1 and 5 h of reduction treatment (Fig. 3(e)) as the NPs double in size. At this point, although the subsurface Ni is depleted, more Ni diffuses to the surface from the bulk, initiating new nucleation events and hence causing the areal density to double thereafter, from 14 NPs/μm<sup>2</sup> after 5 h to 27 NPs/μm<sup>2</sup> after 25 h.

The results at 750 °C paint a slightly different picture. Fig. 3(e) shows that the NP growth rate in 5 : 95 H<sub>2</sub> : N<sub>2</sub> is sluggish at all times at the lower temperature and requires 50 h for a twofold increase in size (from *ca.* 36 nm after 5 h to *ca.* 70 nm after 50 h). The slower growth rate leads to a significantly narrower NP size distribution for all heat treatment durations at 750 °C as compared to those formed at 800 °C (Fig. S1†). The NP areal density is also 2–3 times higher at the lower temperature than at 800 °C. This suggests that the conditions at 800 °C favor NP growth, which is suppressed at 750 °C, likely due to smaller diffusivities of Fe and Ni although the *p*O<sub>2</sub> is lower at 750 °C.

Overall, our results suggest that the kinetics of nucleation and growth, the two competing processes in NP formation, are faster at 800 °C than at 750 °C in 5 : 95 H<sub>2</sub> : N<sub>2</sub>, as expected. Hence, the average particle size shifts from 36 nm (750 °C 5 h) to 95 nm (800 °C 5 h), because the growth rate is much faster for only a 50 °C increase in temperature. As a consequence, the areal density drops from *ca.* 44 to 14 NPs/μm<sup>2</sup>. However, the areal density of NPs after 25 h at 750 °C does not change significantly (51 NPs/μm<sup>2</sup>) while that at 800 °C almost doubles to 27 NPs/μm<sup>2</sup>. This could be attributed to the fact that, at the higher temperature (800 °C), the Ni and Fe required to form NPs can diffuse from deeper in the bulk to nucleate new surface NPs, while once the sub-surface Ni concentration is depleted at 750 °C, nucleation of new NPs is restricted while the existing ones coarsen to an average size of 46 nm, possibly by the addition of Fe. A typical NP population consists of a variety of shapes ranging from hemispherical for small particles to cuboidal and faceted for larger ones.

To understand whether NP coarsening in LFCrN is a result of particle coalescence or Ostwald ripening, an experiment was carried out in which the NP evolution in a particular area on a pellet sample was tracked with time at 800 °C in 5 : 95 H<sub>2</sub> : N<sub>2</sub>. Fig. 4(a) shows an SEM image after a 5 h exposure, in which cuboidal NPs *ca.* 55 nm in size are clearly visible, while much smaller NPs can also be seen emerging from the surface (indicated by the yellow arrow in the inset in Fig. 4(a)). The same sample was placed in the furnace again and reduced for another 5 h for a total of 10 h exposure to 5 : 95 H<sub>2</sub> : N<sub>2</sub> at 800 °C. Fig. 4(b) shows that after a 10 h exposure, the dark phase completely disappeared from the surface while the grain surface appears to have roughened as the particles grew in size. A few individual particles were tracked for changes in shape and size (marked by red oval and blue box). The tracked NPs appear to be anchored to the same spot on the sample in the same

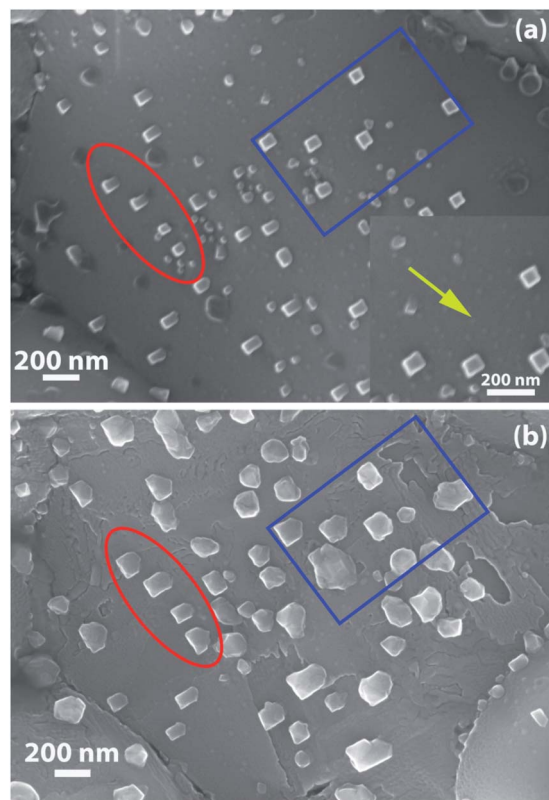


Fig. 4 SEM micrographs showing NPs on the surface of an LFCrN pellet upon exposure to 5 : 95 H<sub>2</sub> : N<sub>2</sub> for (a) 5 h, and (b) 10 h at 800 °C. The same area was imaged for both (a) and (b).

orientation. Their shapes, however, changed from cuboidal to irregular and their size doubled on average (from *ca.* 55 nm to *ca.* 104 nm). The smaller NPs that were seen emerging after 5 h have completely disappeared, possibly merging with the larger ones, which suggests that the dominant coarsening mechanism in this case is Ostwald ripening, although the possibility of the contribution of NP coalescence to the overall growth process cannot be ruled out. Lai *et al.* also suggested Ostwald ripening as the dominant NP growth mechanism for a similar perovskite with Co doping (La<sub>0.3</sub>Sr<sub>0.7</sub>Cr<sub>0.3</sub>Fe<sub>0.6</sub>Co<sub>0.1</sub>O<sub>3-δ</sub>), although they based their argument on particle size and areal density measurements rather than corroborating it with a particle tracking experiment.<sup>27</sup>

HAADF STEM imaging was performed to determine the morphology and composition of the NPs formed after the reduction treatment in H<sub>2</sub>-N<sub>2</sub>. Fig. 5(a) shows a STEM image of a NP protruding from the perovskite particle surface. This sample was exposed to 5 : 95 H<sub>2</sub> : N<sub>2</sub> for 1 h at 800 °C. The EDS elemental color maps in Fig. 5(b–e) reveal that the NP is an Fe–Ni alloy, while the EDS line scan across the center of the particle reveals that the stoichiometry is close to Fe<sub>0.5</sub>Ni<sub>0.5</sub> (f). Similar results were obtained for the sample that was exposed to 5 : 95 H<sub>2</sub> : N<sub>2</sub> for 5 h at 750 °C. Fig. S2(a–e)† shows a NP with a square base that is composed of only Fe and Ni, also with a stoichiometry close to Fe<sub>0.55</sub>Ni<sub>0.45</sub> (Fig. S2(f)†). Longer exposures to the reducing environment appear to allow the NPs to shift from



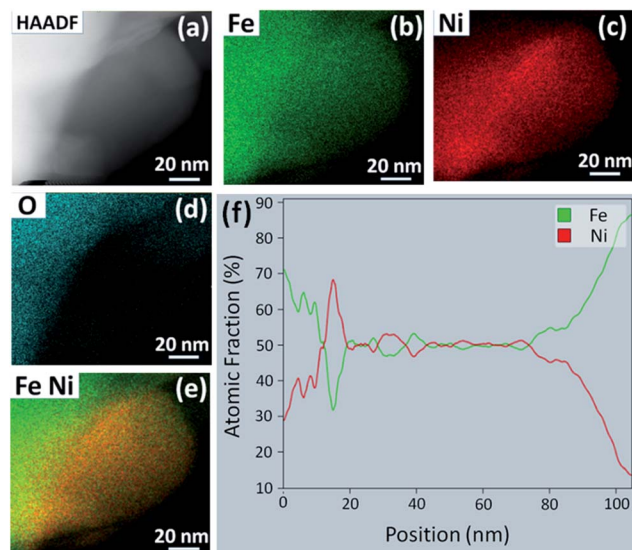


Fig. 5 (a) HAADF STEM image of a NP exsolved upon reduction of LCFCrN in 5 : 95  $\text{H}_2$  :  $\text{N}_2$  for 1 h at 800 °C. EDS elemental maps of (b) Fe, (c) Ni, (d) O, and (e) Fe and Ni overlaid, for the NP seen in (a). (f) EDS line scan across the middle of the NP in (a).

a Ni-rich to Fe-rich stoichiometry. These STEM results, in conjunction with XRD, suggest that there is a series of Fe–Ni alloys that can form by exsolution from LCFCrN at these temperatures and that the transition from  $\text{FeNi}_3$  to  $\text{Fe}_{0.64}\text{Ni}_{0.36}$  and beyond is not stepwise. Instead, this process likely proceeds through intermediate compositions, such as  $\text{Fe}_{0.5}\text{Ni}_{0.5}$ , by the addition of Fe to the growing NPs.

### 3.2 Exsolution of Fe–Ni alloy NPs from LCFCrN in CO–CO<sub>2</sub> environments

In SOC conditions, the fuel electrode is exposed to CO–CO<sub>2</sub> atmospheres having a  $p\text{O}_2$  ranging from  $10^{-7}$  to  $10^{-27}$  atm (assuming 0.01% CO in pure CO<sub>2</sub> and 0.01% CO<sub>2</sub> in pure CO). Even if the NPs are first formed in 5 : 95  $\text{H}_2$  :  $\text{N}_2$  before being used as catalysts in CO–CO<sub>2</sub> atmospheres, the atmosphere could have enough reducing power to influence the NP stability during SOC operation. Although there are many reports in which cell post-mortem analysis after exposure to CO–CO<sub>2</sub> has been reported, there are no reports of systematic studies on the nucleation and growth of exsolved Fe–Ni alloy NPs in CO–CO<sub>2</sub>, to the best of our knowledge. For this reason, herein we compare the Fe–Ni alloy NP nucleation and growth characteristics during exsolution from LCFCrN perovskites in 5 : 95  $\text{H}_2$  :  $\text{N}_2$  and CO–CO<sub>2</sub> atmospheres.

Fig. 6(a–d) show SEM micrographs of the surfaces of LCFCrN pellets exposed to 10 : 90, 30 : 70, 70 : 30 and 90 : 10 CO : CO<sub>2</sub> gas mixtures, respectively. Small hemispherical NPs are visible in all of these gas mixtures as well as for gas mixtures with 5 : 95 and 95 : 5 CO : CO<sub>2</sub> ratios after 5 h exposure at 800 °C. One important observation made from the SEM micrographs in Fig. 6 is that the dark phase, possibly CaO, which was visible in  $\text{H}_2$ – $\text{N}_2$  atmospheres, does not appear in all atmospheres up to 90 : 10 CO : CO<sub>2</sub> after a 5 h exposure. In 90 : 10 CO : CO<sub>2</sub>, the

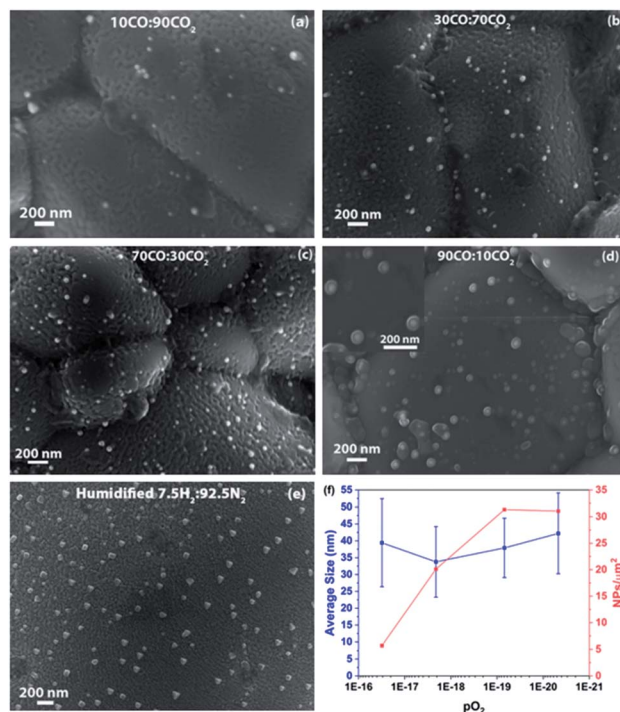


Fig. 6 SEM micrographs showing NPs on the surface of LCFCrN pellets upon exposure to (a) 10 : 90, (b) 30 : 70, (c) 70 : 30, (d) 90 : 10 CO : CO<sub>2</sub> gas mixtures (inset shows the SEM image demonstrating the Fe–Ni NPs encapsulated by a second phase), and (e) humidified 7.5 : 92.5  $\text{H}_2$  :  $\text{N}_2$  for 5 h at 800 °C. (f) Plots of NP average size and areal density vs.  $p\text{O}_2$  in various CO–CO<sub>2</sub> gas mixtures.

NPs appear to be enveloped by a second phase with a morphology that is reminiscent of a red blood cell (see inset of Fig. 6(d)). It is unclear at present as to what this phase may be but it is possible that it is the incipient CaO that was seen to append to the NPs previously, although further characterization is needed for accurate determination.

Fig. 7 shows XRD patterns for LCFCrN powder exposed to various CO–CO<sub>2</sub> mixtures, indicating that CaO only begins to appear after exposures to >90% CO, with distinct peaks visible for 95% CO after 5 and 25 h exposures. It is worth mentioning that the pellets coked excessively after exposure to 95 : 5 CO : CO<sub>2</sub> for 25 h (see graphite peak at  $2\theta$  value of 26.38° in the XRD pattern in Fig. 7) and pulverized completely after exposure to 100% CO. Another interesting observation from the XRD results is that the NPs are composed of Ni-rich  $\text{FeNi}_3$  up to at least 70% CO, while distinct peaks for  $\text{Fe}_{0.64}\text{Ni}_{0.36}$  alloy NPs (clearly visible in 5 : 95  $\text{H}_2$  :  $\text{N}_2$ ) only begin to appear after exposure to >90% CO. Also, the Ni-rich alloy peak disappears after a 25 h exposure to 95% CO and a peak at a  $2\theta$  value of 44.94° appears, possibly reflecting  $\alpha$ -Fe.

Significant surface roughness was observed on the LCFCrN grains upon exposure to CO<sub>2</sub>–CO atmospheres, similar to what was observed in 5 : 95  $\text{H}_2$  :  $\text{N}_2$  atmospheres. Fig. 6(f) shows plots for the variation in NP size and areal density with  $p\text{O}_2$  (which varies with the CO<sub>2</sub> : CO gas composition) for a 5 h exposure at 800 °C. The average NP size does not change significantly, increasing only by *ca.* 10% over a 3 orders of magnitude

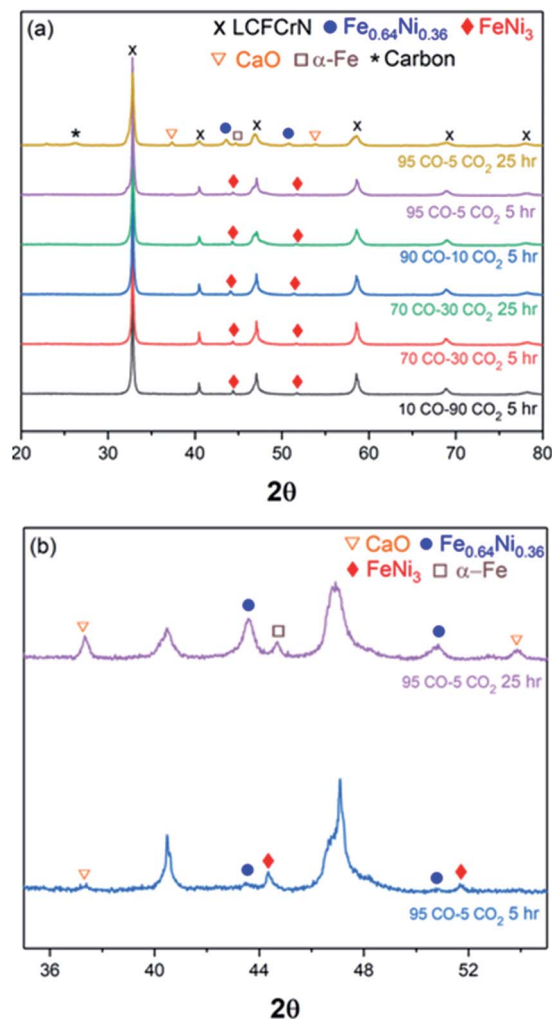


Fig. 7 (a) Room temperature X-ray diffraction patterns showing phase evolution of LCFCrN exposed to varying CO–CO<sub>2</sub> ratios at 800 °C. (b) X-ray diffraction patterns showing the emergence of CaO and Fe–Ni alloy NP peaks for LCFCrN exposed to 95 : 5 CO : CO<sub>2</sub> at 800 °C for 5 and 25 h.

decrease in  $p_{\text{O}_2}$ . On the other hand, a decrease in  $p_{\text{O}_2}$  has a marked effect on the Ni NP areal density, which increases by a factor of *ca.* 5.5 when the  $p_{\text{O}_2}$  was reduced from  $3.1 \times 10^{-17}$  atm to  $6.9 \times 10^{-20}$  atm. This suggests that, although the decrease in  $p_{\text{O}_2}$  promotes NP nucleation, it does not significantly impact NP growth in CO–CO<sub>2</sub> environments.

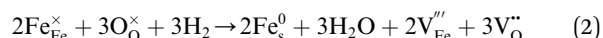
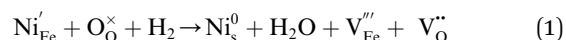
### 3.3 Comparison of nanoparticles grown in CO–CO<sub>2</sub> vs. H<sub>2</sub>–N<sub>2</sub> environments

To verify whether the NP composition, size, areal density, and shape, are a function of  $p_{\text{O}_2}$  alone, pellet samples were reduced in humidified 7.5 : 92.5 H<sub>2</sub> : N<sub>2</sub> at 800 °C for 5 h. This gas composition was chosen because it has a  $p_{\text{O}_2}$  almost identical to that of 70 : 30 CO : CO<sub>2</sub> at 800 °C (Table S1†). Fig. 6(e) shows an SEM image of the surface of the pellet, depicting the NP distribution and morphology in humidified 7.5 : 92.5 H<sub>2</sub> : N<sub>2</sub>. The NPs have a composition close to FeNi<sub>3</sub>, an average size of

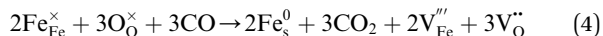
67 nm, and an areal density of 14 NPs/μm<sup>2</sup> (Fig. S4†). Although the NP areal density is identical, the average NP size is almost 2/3rd that in dry 5 : 95 H<sub>2</sub> : N<sub>2</sub>, while the appended CaO particles visible in Fig. 3 are also less abundant. These results suggest that the nucleation kinetics are similar in both the atmospheres (dry vs. humidified H<sub>2</sub>) while the coarsening kinetics are slower in humidified 7.5 : 92.5 H<sub>2</sub> : N<sub>2</sub>.

In comparison, while the Ni-rich NP composition (FeNi<sub>3</sub>) in humidified 7.5 : 92.5 H<sub>2</sub> : N<sub>2</sub> is similar, the average size is almost twice, and the areal density is almost half that in 70 : 30 CO : CO<sub>2</sub>, although the  $p_{\text{O}_2}$  for both atmospheres is similar. To maintain the composition close to Ni-rich FeNi<sub>3</sub> at a bigger size, the rate of Ni diffusion to the growing NP needs to keep up to prevent Fe enrichment. That this composition is maintained in humidified 7.5 : 92.5 H<sub>2</sub> : N<sub>2</sub> at an average NP size of 67 nm (as opposed to 38 nm in 70 : 30 CO : CO<sub>2</sub>) suggests that the H<sub>2</sub>–N<sub>2</sub> environment is more potent for NP exsolution than CO–CO<sub>2</sub> environment and that the nature of the reducing gas in conjunction with the  $p_{\text{O}_2}$  dictates the NP characteristics. With regards to the NP shape, those formed in humidified 7.5 : 92.5 H<sub>2</sub> : N<sub>2</sub> are strongly faceted with cuboidal or pyramidal shapes (Fig. 6(e)), while those formed in 70 : 30 CO : CO<sub>2</sub> are more or less hemispherical (Fig. 6(c)). The stark differences in the shapes of the NPs in both the environments also lend credence to the assertion that the nature of the gas, not just the  $p_{\text{O}_2}$ , plays an important role in determining NP characteristics.

Since the two gas environments, humidified 7.5 : 92.5 H<sub>2</sub> : N<sub>2</sub> and 70 : 30 CO : CO<sub>2</sub>, have a similar  $p_{\text{O}_2}$  but exhibit starkly different NP characteristics, the nature of the gas and consequently the role of the reaction pathway for reduction in H<sub>2</sub>–N<sub>2</sub> vs. CO–CO<sub>2</sub> are clearly very important. For exsolution to proceed, a complex series of steps are required, *i.e.*, the reactant gas must diffuse to the NP/perovskite interface and then undergo many individual reaction steps, as shown as net reactions (1) and (2) in H<sub>2</sub>–N<sub>2</sub>:



and reactions (3) and (4) in a CO–CO<sub>2</sub> environment:



It is possible that the rate limiting step in both the H<sub>2</sub> and CO environments is the diffusion of the H<sub>2</sub> or CO to the NP/perovskite interface, where the reaction is most likely to occur, once Ni<sup>2+</sup> is depleted from the perovskite lattice in the surface region, forming Ni. H<sub>2</sub> is a small molecule and thus can diffuse faster to that interface rather than the larger CO molecule and hence reactions (1) and (2) would likely have faster kinetics than reactions (3) and (4). Since the CO–CO<sub>2</sub> gas mixture contains a significant amount of CO<sub>2</sub> and as it has been shown in the literature that the NPs enhance CO<sub>2</sub> adsorption, it



is possible that the ease of access of the gas to the NP/perovskite interface becomes increasing difficult for CO. Thus a lower coarsening rate is seen in CO–CO<sub>2</sub> atmospheres as compared to that in H<sub>2</sub>–N<sub>2</sub>. Furthermore, as stated above, reactions (2) and (4) will each likely involve multiple individual steps, any of which could be rate limiting.

Although not a fair comparison, some interesting contrasts can be drawn between the characteristics of the NPs formed in 5 : 95 H<sub>2</sub> : N<sub>2</sub> (at 750 and 800 °C) *versus* those formed in 70–30 CO : CO<sub>2</sub> atmospheres at 800 °C for the same heat treatment duration (5 h). This CO : CO<sub>2</sub> ratio was chosen assuming that the CO<sub>2</sub> to CO conversion efficiency of a typical SOC fuel electrode is 70%. In terms of their size and areal density, the NPs exsolved under 5 : 95 H<sub>2</sub> : N<sub>2</sub> at 800 °C are bigger by a factor of *ca.* 2.5, while their areal density is roughly one half of those formed under 70–30 CO : CO<sub>2</sub> atmospheres. This corroborates our earlier assertion that the NP growth kinetics are faster at 800 °C in 5 : 95 H<sub>2</sub> : N<sub>2</sub> than in 70 : 30 CO : CO<sub>2</sub>. Slower NP growth kinetics also mean that the NP shape is not as well developed (hemispherical) *versus* those formed in 5 : 95 H<sub>2</sub> : N<sub>2</sub> (faceted). Also, since NP coarsening is restrained, the size distribution is narrow in 70 : 30 CO : CO<sub>2</sub> (Fig. 6(e) and S3<sup>†</sup>). On the other hand, the NPs formed under 5 : 95 H<sub>2</sub> : N<sub>2</sub> at 750 °C have a similar average size (36 nm), while their areal density is roughly 1.5 times those formed under 70 : 30 CO : CO<sub>2</sub> atmospheres. This suggests that the NP nucleation kinetics are also faster in 5 : 95 H<sub>2</sub> : N<sub>2</sub> than in 70 : 30 CO : CO<sub>2</sub> even though the temperature is lower. This could be advantageous, as this suggests that NP coarsening would be restrained during exposure to highly reducing CO–CO<sub>2</sub> environments that are prevalent in typical SOC conditions.

However, it would be misleading to suggest that the NP size and composition would remain the same after long-term exposure of LFCrN to a reducing environment under cathodic polarization. While studies focused on CO<sub>2</sub> electrolysis using exsolved NPs have reported a particular NP size distribution and initial composition, there are few studies that show the composition after long-term exposure to the reducing environment. As we have shown in the present study, the NP size and composition are transient and depend on the reducible species, reduction temperature and duration, the local *p*O<sub>2</sub>, and the nature of the reducing gas. In the case of material systems containing Ni and Fe, such as LFCrN, once Ni in the surface/sub-surface is depleted and the diffusion of Ni from deeper within the lattice is restrained, the NPs would continue to grow in size with the addition of Fe, while the composition would continuously shift from Ni-rich to Fe-rich alloys, such as the transition from FeNi<sub>3</sub> to Fe<sub>0.64</sub>Ni<sub>0.36</sub> in the current case.

However, as we have shown here, this transition can be accelerated or suppressed by changing the *p*O<sub>2</sub> of the reducing environment, the reducing atmosphere (CO *vs.* H<sub>2</sub>), and the reduction temperature and duration, among other factors. Zhu *et al.* have shown that slight changes in *p*O<sub>2</sub> can have a significant impact on the NP composition.<sup>44</sup> They showed that the Fe–Ni alloy NPs formed at 850 °C in Ni-substituted Sr(Ti,Fe)O<sub>3</sub> shifted from a stoichiometry of Ni<sub>0.51</sub>Fe<sub>0.49</sub> to Ni<sub>0.72</sub>Fe<sub>0.28</sub> with an order of magnitude increase in *p*O<sub>2</sub>. Since higher *p*O<sub>2</sub> seems

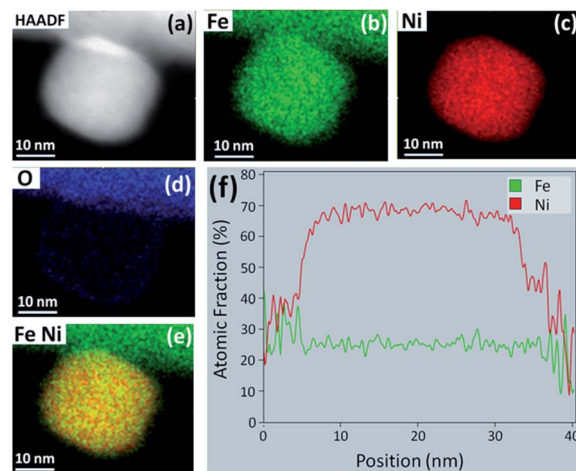


Fig. 8 (a) HAADF STEM image of a NP protruding from the surface of the LFCrN perovskite reduced in 70 : 30 CO : CO<sub>2</sub> at 800 °C for 5 h. EDS elemental maps of (b) Fe, (c) Ni, (d) O, and (e) Fe and Ni overlaid, for the NP seen in (a). (f) EDS line scan across the middle of the NP in (a).

to favor Ni-rich (Fe-lean) alloys, the NPs formed in CO–CO<sub>2</sub> and humidified H<sub>2</sub>–N<sub>2</sub> in the present work retain their Ni-rich stoichiometry as opposed to those formed in dry H<sub>2</sub>–N<sub>2</sub>, as the *p*O<sub>2</sub> is at least 3 orders of magnitude higher.

HAADF STEM imaging was performed to determine the morphology and composition of the NPs formed in the 70 : 30 CO : CO<sub>2</sub> environment. Fig. 8(a) shows a STEM image of a NP protruding from the perovskite particle surface, where the sample was exposed to 70 : 30 CO : CO<sub>2</sub> for 5 h at 800 °C. The particle is *ca.* 30 nm in size and appear to be spherical in shape with slightly faceted corners. A significant volume of the NPs seems to be embedded in the perovskite base, suggesting strong anchoring. EDS elemental mapping and line scans across the center of the particle in Fig. 8(b–e) show that the NPs are Ni-rich with a stoichiometry of close to that of FeNi<sub>3</sub> (f). Fig. 8(d) shows an EDS elemental map for oxygen which reveals a faint oxygen shell around the NP. It is pertinent to mention here that although very faint, this shell was seen across many particles which led us to believe that this is likely an artefact due to exposure to air during sample retrieval and handling.

Even after exposure to the same atmosphere for 25 h (Fig. 9), the NPs do not coarsen significantly (Fig. 9(a)) and retain the Ni-rich composition, as revealed by the STEM/EDS analysis presented in Fig. 9. However, the NP shown in Fig. 9 has a slightly lower Ni : Fe ratio (Fig. 9(f)), which suggests that NP coarsening is a result of the addition of Fe, possibly due to the sub-surface depletion of Ni and the abundance of Fe in the vicinity of the NP.

To summarize, we have found a clear indication of faster nucleation and growth kinetics in 5 : 95 H<sub>2</sub> : N<sub>2</sub> than in all of the CO–CO<sub>2</sub> environments employed in this work but the mechanism causing this difference is not clear at this time, although it can be argued that both *p*O<sub>2</sub> and the nature of the reducing gas play a role in the exsolution kinetics and outcomes. An important conclusion reached in the previous

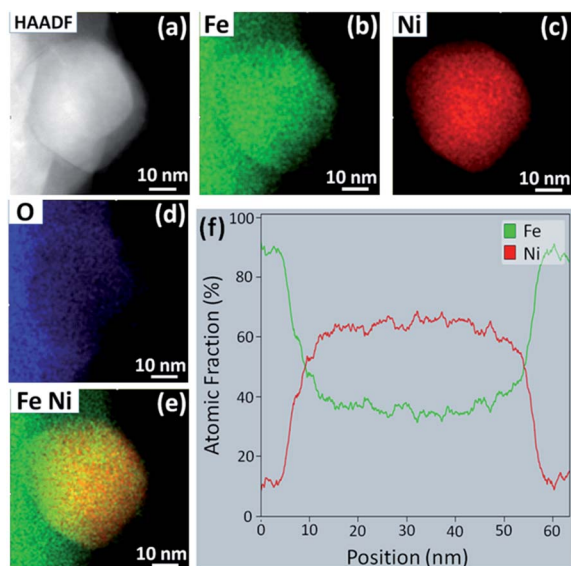


Fig. 9 (a) HAADF STEM image of a NP exsolved upon reduction in 70 : 30 CO : CO<sub>2</sub> for 25 h at 800 °C. EDS elemental maps of (b) Fe, (c) Ni, (d) O, and (e) Fe and Ni overlaid, for the NP in (a). (f) EDS line scan across the middle of the NP in (a).

discussion is that, once the NPs are formed in either gas environment, they are likely to remain stable when they are employed in CO<sub>2</sub> reduction/CO oxidation catalysis. For the system in question, we suggest a short reduction treatment (1–2 h) in 5 : 95 H<sub>2</sub> : N<sub>2</sub> at 800 °C for the fuel electrode to achieve a densely populated NP distribution with average sizes of sub-50 nm, before exposure to CO<sub>2</sub>-CO environments for CO<sub>2</sub> electrolysis or CO oxidation studies.

### 3.4 Electrochemical performance of LFCrN symmetrical cells in CO<sub>2</sub>-CO environments

To assess the electrochemical performance of Fe–Ni NP-decorated LFCrN (Fe–Ni@LFCrN), symmetrical cells were prepared on samaria-doped ceria (SDC)-buffered scandia-stabilized zirconia (ScSZ) electrolytes, with the buffer layer added to prevent reaction of La and Ca with YSZ.<sup>7,8</sup> The fuel electrode was reduced in 5 : 95 H<sub>2</sub> : N<sub>2</sub> at 800 °C for 2 h, as discussed above, to produce the NPs on the electrode surface, followed by exposure to various CO<sub>2</sub> : CO ratios, while the oxygen electrode was supplied with air.

Fig. 10(a) shows the cyclic voltammograms (CVs) acquired when the fuel electrode was supplied with pure CO<sub>2</sub>, 90 : 10 CO<sub>2</sub> : CO, 70 : 30 CO<sub>2</sub> : CO, and 50 : 50 CO<sub>2</sub> : CO, respectively. The measured open circuit voltages (OCV) for each gas mixture were 0.134 V, 0.847 V, 0.905 V, and 0.943 V, respectively, all at 800 °C, in agreement with predicted thermodynamic values.

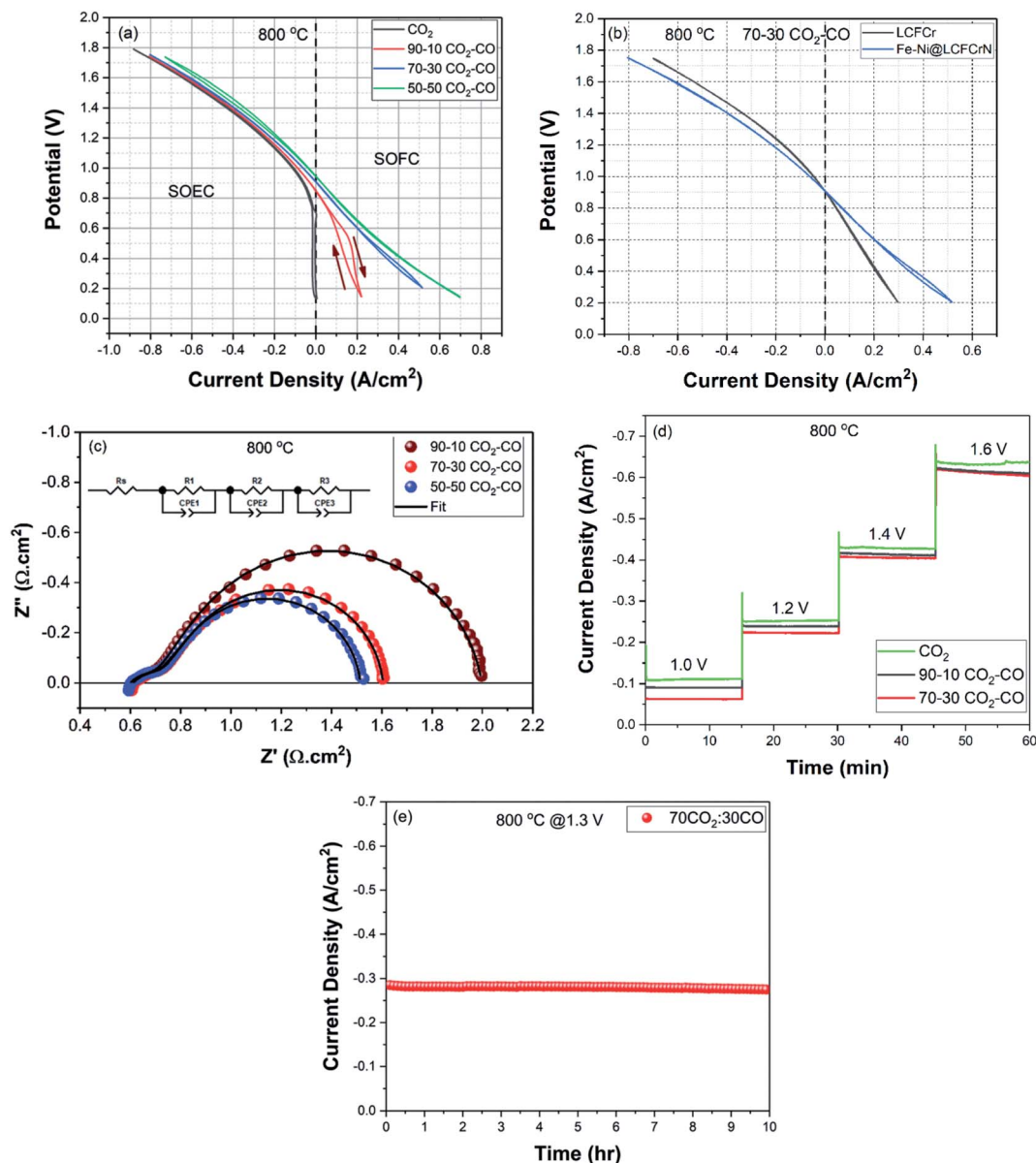
The CVs reveal the excellent activity of Fe–Ni@LFCrN for the CO<sub>2</sub>-RR, with current densities of  $-0.649$ ,  $-0.634$ ,  $-0.618$ , and  $-0.583$  A cm<sup>-2</sup>, respectively, at a cell voltage of 1.6 V. The current densities achieved in this work for the electrolysis of pure CO<sub>2</sub> are comparable to or better than many other electrode materials reported in the literature (Table S2†), noting that we

have not added a second phase, normally an ionic conductor, to the catalyst layer and are thus reporting the excellent activity of the mixed conducting LFCrN material on its own. Interestingly, the CO<sub>2</sub>-RR current densities at a constant overpotential (Fig. 10(d)) are almost independent of the  $p$ CO<sub>2</sub> of the gas feed. Although an in-depth study of this observation has not been carried out as yet, we speculate that this could be due to two possible reasons; (i) during CO<sub>2</sub> electrolysis, a redox transition step, such as the reduction of Fe and Cr, is the slow step before CO<sub>2</sub> adsorption and activation occurs, or (ii) the surface coverage of CO<sub>2</sub> is saturated at a lower  $p$ CO<sub>2</sub>, hence making the CO<sub>2</sub> reduction rate essentially independent of  $p$ CO<sub>2</sub>.

Fig. 10(a) also shows the excellent activity of Fe–Ni@LFCrN in the SOFC mode (CO oxidation), especially as the CO content in the gas phase is increased. In 90 : 10 CO<sub>2</sub> : CO, the CV shows significant hysteresis in the SOFC mode, possibly due to reactant (CO) starvation at the fuel electrode. However, when the amount of CO fed to the fuel electrode is increased, the hysteresis progressively disappears and high current densities for CO oxidation are also achieved. For example, from the iR corrected CV in 50 : 50 CO<sub>2</sub> : CO shown in Fig. S5,† at an absolute current density of 0.4 A cm<sup>-2</sup>, the overpotential for CO<sub>2</sub>-RR is 241 mV, while for CO oxidation, it is 273 mV, showing that the CO<sub>2</sub>-RR is only slightly faster than CO oxidation under these conditions.

To reveal the impact of the exsolved Fe–Ni NPs, Fig. 10(b) compares the electrochemical response of symmetrical LFCrN and Fe–Ni@LFCrN cells when the fuel electrodes were supplied with 70 : 30 CO<sub>2</sub> : CO and air was fed to the oxygen electrodes. It is evident that, while there is only a *ca.* 15% enhancement in current density for CO<sub>2</sub>-RR in Fe–Ni@LFCrN *vs.* LFCrN at a cell potential of 1.6 V, the current density for CO oxidation shows a *ca.* 75% enhancement at 0.2 V, with these potentials being equivalent to a similar overpotential of  $\sim 0.7$  V. These results are very important, especially from the point of view of developing electrode materials for symmetrical SOCs. Generally, in perovskite-based fuel electrodes, the CO<sub>2</sub>-RR is significantly more efficient than is CO oxidation,<sup>9,10,45</sup> which limits the applicability of these materials for RSOC applications. However, in the present work, the Fe–Ni NPs in Fe–Ni@LFCrN greatly increase the kinetics of the CO oxidation reaction and make the material essentially equally active for both CO<sub>2</sub>-RR and CO oxidation, thus significantly improving the material for use in RSOC applications.

Our results are contrary to what was observed by Liu *et al.*, who used La<sub>0.6</sub>Sr<sub>0.4</sub>Fe<sub>0.8</sub>Ni<sub>0.2</sub>O<sub>3- $\delta$</sub>  as the fuel electrode. Their cells exhibited a greater enhancement in CO<sub>2</sub>-RR activity (*ca.* 35%) when tested at 850 °C due to exsolved Fe–Ni alloy NPs, while the CO oxidation activity showed a significantly lower (*ca.* 20%) extent of improvement.<sup>9</sup> It should also be kept in mind that the fuel electrodes in Liu *et al.*'s work and those in most published literature are composite electrodes, where the active material is mixed with an ion-conducting material, such as gadolinia- or samaria-doped ceria.<sup>9,22,24,46</sup> Similarly, their air electrode consisted of LSCF or LSM composite electrodes containing doped cerias or YSZ.<sup>9,22,24,46,47</sup> It is well known that the addition of an ion-conducting phase increases the TPB length



**Fig. 10** Electrochemical results for a symmetrical cell with the configuration Fe–Ni@LCFCrN/SDC/SSZ/SDC/LCFCrN. (a) CVs acquired at 800 °C (scan direction is indicated by arrows) in pure CO<sub>2</sub>, and in 90 : 10, 70 : 30, and 50 : 50 CO<sub>2</sub> : CO gas mixtures, (b) CVs showing the enhancement in current density vs. LFCr in a 70 : 30 CO<sub>2</sub> : CO gas mixture due to the exsolved NPs, (c) Nyquist plots acquired at open circuit in 90 : 10, 70 : 30, and 50 : 50 CO<sub>2</sub> : CO gas mixtures, respectively, (d) 15 minute stability tests between 1.2–1.6 V for the electrolysis of pure CO<sub>2</sub>, and 90 : 10 and 70 : 30 CO<sub>2</sub> : CO gas mixtures, respectively, and (e) medium term stability test at a cell potential of 1.3 V in a 70 : 30 CO<sub>2</sub> : CO gas mixture.

that, in turn, enhances the catalytic activity. In our case, the material for both the fuel and the oxygen electrodes was intentionally used as a single phase material, and as has been shown previously, the parent perovskite (LCFCr) is also highly active for the oxygen reduction (ORR) and oxygen evolution (OER) reactions.<sup>6,8</sup> Importantly, as our electrodes are not composited with doped-cerias, this means that the electrochemical data can be interpreted in a straightforward manner and any enhancement in activity can be unambiguously ascribed to the presence of the exsolved NPs.

The impedance spectra of the Fe–Ni@LCFCrN full cell at OCP in 90 : 10, 70 : 30, and 50 : 50 CO<sub>2</sub> : CO gas mixtures are presented in Fig. 10(c). The corresponding resistance and capacitance values based on a best-fit to an equivalent circuit model (ECM) [ $R_s(R_1//CPE_1)(R_2//CPE_2)(R_3//CPE_3)$ ] are given in Table 1. The series resistance,  $R_s$ , was found to be  $\sim 0.60 \Omega \text{ cm}^2$ , invariant with the CO<sub>2</sub> : CO ratio, as expected. The  $R_p$  in 90 : 10 CO<sub>2</sub> : CO was  $1.39 \Omega \text{ cm}^2$ , which decreased to  $1.0 \Omega \text{ cm}^2$  when the gas composition was changed to 70 : 30 CO<sub>2</sub> : CO, and to  $0.93 \Omega \text{ cm}^2$  when the gas composition was changed to 50 : 50 CO<sub>2</sub> : CO.



Table 1 Fitting parameters of electrochemical processes based on the equivalent circuit model in Fig. 10(c)

Gas composition	$R_1$ ( $\Omega$ cm <sup>2</sup> )	$C_1$ (F cm <sup>-2</sup> )	$n_1$	$R_2$ ( $\Omega$ cm <sup>2</sup> )	$C_2$ (F cm <sup>-2</sup> )	$n_2$	$R_3$ ( $\Omega$ cm <sup>2</sup> )	$C_3$ (F cm <sup>-2</sup> )	$n_3$	$R_p$ ( $\Omega$ cm <sup>-2</sup> )
90% CO <sub>2</sub> -10% CO	0.15	$1.0 \times 10^{-2}$	0.52	0.06	$5.2 \times 10^{-1}$	0.88	1.18	$2.3 \times 10^{-1}$	0.91	1.39
70% CO <sub>2</sub> -30% CO	0.16	$8.5 \times 10^{-3}$	0.53	0.06	$5.2 \times 10^{-1}$	0.88	0.78	$3.0 \times 10^{-1}$	0.94	1.0
50% CO <sub>2</sub> -50% CO	0.16	$8.3 \times 10^{-3}$	0.53	0.06	$5.2 \times 10^{-1}$	0.88	0.71	$4.0 \times 10^{-1}$	0.94	0.93

The  $R_p$  value obtained in two-electrode studies represents the electrochemical processes occurring at both electrodes. Table 1 shows that  $R_1$  and  $R_2$  (high and medium frequencies, respectively) seem to be independent of the gas composition supplied at the fuel electrode, possibly attributable to underlying interfaces but perhaps more likely to processes occurring at the oxygen electrode. In order to clarify this, half-cell impedance spectra were acquired in air, which yielded a relatively low  $R_p$  of  $0.46 \Omega$  cm<sup>2</sup> ( $0.23 \Omega$  cm<sup>2</sup> per electrode). Comparison of the time constants obtained from equivalent circuit fitting for the half cell in air with those observed at the full cell suggests that  $R_2$  ( $0.06 \Omega$  cm<sup>2</sup>) in Table 1 arises primarily from the oxygen electrode. In terms of the high frequency  $R_1$  (*ca.*  $0.15$ – $0.16 \Omega$  cm<sup>2</sup>) (Table 1) for the full cell, our results suggest that it is due to the combination of processes occurring within the porous structures of both electrodes.

The comparison of the EIS-determined  $R$  values in the full cell *versus* in an air half-cell shows that LCFCrN, like its undoped analogue (LCFCr), is a still better catalyst for the oxygen reduction and evolution reactions (ORR and OER)<sup>6,8</sup> than for CO<sub>2</sub> reduction/CO oxidation, and that the processes occurring at the fuel electrode make the dominant contribution to the full cell  $R_p$  in Fig. 10(c). Also, the decrease in  $R_p$  with increasing amounts of CO in Fig. 10(c) means that CO oxidation dominates the low frequency response at these open circuit conditions.

Table 1 also shows the capacitance values measured in our full cells, revealing that the low frequency capacitor ( $C_3$ ) is very large, with an associated  $n_3$  value close to 1. As this arc is very responsive to the CO<sub>2</sub> : CO ratio, it is attributed either to gas phase mass transport limitations of CO (which is present in lower concentrations, at least in 90 : 10 and 70 : 30 CO<sub>2</sub> : CO gas mixtures) or to the chemical capacitance of the LCFCrN electrode in the CO<sub>2</sub>-CO environment,<sup>48-51</sup> with a small increase in  $C_3$  noted as the CO content of the gas increases. As stated above,  $C_2$  likely has similar origins but is generated at the air electrode, as it is independent of the CO<sub>2</sub> : CO ratio.  $C_1$  and its characteristic  $n_1$  value of *ca.* 0.5 suggests a Gerischer element, arising from a distribution of potentials within both of the porous electrodes under high frequency perturbations.<sup>52,53</sup>

Fig. 10(d) shows the results of 15 min potentiostatic stability tests for the CO<sub>2</sub>-RR reaction (and oxygen evolution) at a cell potential in the range of 1.0–1.6 V when the fuel electrode was exposed to pure CO<sub>2</sub> and 90 : 10 and 70 : 30 CO<sub>2</sub> : CO gas mixtures. It is seen that the current densities are stable in pure CO<sub>2</sub> at all voltages, while the current densities for the 90 : 10, and 70 : 30 CO<sub>2</sub> : CO gas mixtures are also stable up to a cell voltage of 1.4 V, with a slight degradation seen only at the relatively high voltage of 1.6 V. However, this drop in current

density can be rapidly reversed by retracting the voltage and running the cell at the OCP for a few minutes.

Liu *et al.* attributed a similar drop in current density for La<sub>0.6</sub>Sr<sub>0.4</sub>Fe<sub>0.8</sub>Ni<sub>0.2</sub>O<sub>3- $\delta$</sub>  electrodes at high cell voltages to concentration polarization arising from starvation of CO<sub>2</sub> in the gas mixture and/or restrained oxygen evolution at the air electrode,<sup>9</sup> while Optiz *et al.* attributed it to coke formation by CO disproportionation or electrochemical reduction.<sup>54</sup> As our cells can be so easily re-activated, it seems more likely that this is due to mass transport limitations in our case.

Chronoamperometry was also carried out to examine the medium-term stability of the Fe-Ni@LCFCrN cells in a 70 : 30 CO<sub>2</sub> : CO atmosphere. Fig. 10(e) shows that at a cell potential of 1.3 V, the cell exhibits a very stable current density of *ca.*  $0.28$  A cm<sup>-2</sup> for 10 h for the electrolysis of CO<sub>2</sub>, without appreciable degradation.

Although the growth and phase evolution of exsolved Fe-Ni alloy NPs presented herein focus on one system, namely LCFCrN, we believe that this could be generalized to other Fe and Ni containing perovskites. This could apply especially to perovskites with abundant Fe and low Ni doping levels on the B-site, such as SrFe<sub>1.35</sub>Mo<sub>0.45</sub>Ni<sub>0.2</sub>O<sub>6- $\delta$</sub> ,<sup>24</sup> La<sub>0.6</sub>Sr<sub>0.4</sub>Fe<sub>0.8</sub>Ni<sub>0.2</sub>O<sub>3- $\delta$</sub> ,<sup>9</sup> La<sub>0.6</sub>Ca<sub>0.4</sub>Fe<sub>0.8</sub>Ni<sub>0.2</sub>O<sub>3- $\delta$</sub> ,<sup>26</sup> (La<sub>0.75</sub>Sr<sub>0.25</sub>)(Cr<sub>0.5</sub>Fe<sub>0.5-x</sub>Ni<sub>x</sub>)O<sub>3</sub>,<sup>55</sup> *etc.* The insights presented in this paper should also be very helpful in controlling the NP characteristics, such as size, areal density, and composition, to enable stable and durable electrochemical performance of catalyst systems with exsolved NPs.

## 4. Conclusions

Ni-doped La<sub>0.3</sub>Ca<sub>0.7</sub>Fe<sub>0.7</sub>Cr<sub>0.3</sub>O<sub>3- $\delta$</sub>  (LCFCrN) is a robust material system in which a uniform dispersion of metal nanoparticles can be exsolved onto the parent perovskite surface *via* a short reduction treatment under typical SOC operating temperatures (750–800 °C). The nanoparticle size, composition and areal density can be tuned by controlling the reduction treatment duration and temperature in a particular reducing atmosphere. Although XRD reveals that CaO also forms as a by-product of exsolution, its formation can be mitigated by using a lower growth temperature, short reduction duration, or reducing in CO-CO<sub>2</sub> environments (lower  $p_{O_2}$ ). Also, the NPs produced in the CO-CO<sub>2</sub> atmospheres are composed of Ni-rich Fe-Ni alloys, while those produced in 5 : 95 H<sub>2</sub> : N<sub>2</sub> quickly transition from the composition of FeNi<sub>3</sub> to Fe<sub>0.64</sub>Ni<sub>0.36</sub>. However, the nucleation and growth kinetics are slower in CO-CO<sub>2</sub> atmospheres as compared to those in H<sub>2</sub>-N<sub>2</sub>. This makes the LCFCrN system a promising fuel electrode material for RSOC applications as the NP coarsening can be restrained during exposure to CO-CO<sub>2</sub> atmospheres under typical SOC conditions.

Overall, Fe–Ni@LCFCrN exhibits a remarkable electrochemical performance, even without the addition of an ionically conducting phase, such as GDC. Short-term stability tests reveal a very high and stable performance with a maximum current density of  $0.65 \text{ A cm}^{-2}$  at a cell voltage of 1.6 V in pure  $\text{CO}_2$  at  $800^\circ\text{C}$ . As compared to the parent perovskite LCFCr, the exsolved NPs in Fe–Ni@LCFCrN greatly enhance the CO oxidation kinetics (by *ca.* 75%) more notably than the  $\text{CO}_2$ -RR kinetics (*ca.* 15%), which makes the exsolved catalyst equally active for both  $\text{CO}_2$ -RR and CO oxidation, showing great promise for future use as an SOFC anode as well as in RSOFCs.

## Author contributions

Haris Masood Ansari: conceptualization, formal analysis, investigation, writing – original draft. Adam Stuart Bass: investigation, formal analysis, writing – review & editing. Nabeel Ahmad: investigation, formal analysis, writing – review & editing. Viola I. Birss: conceptualization, supervision, funding acquisition, writing – review & editing.

## Conflicts of interest

There are no conflicts to declare.

## Acknowledgements

The authors gratefully acknowledge the Canada First Research Excellence Fund (CFREF) and Alberta Innovates-Technology Futures (AITF, Grant No. G2016000655) for the support of this work. A. S. B. would like to acknowledge the Program for Undergraduate Research Experience (PURE) for the award to support his work. We would also like to acknowledge Mykhailo Pidburtnyi for helpful discussions related to the interpretation of the electrochemical data.

## References

- M. S. Khan, S.-B. Lee, R.-H. Song, J.-W. Lee, T.-H. Lim and S.-J. Park, Fundamental Mechanisms Involved in the Degradation of Nickel-Yttria Stabilized Zirconia (Ni-YSZ) Anode During Solid Oxide Fuel Cells Operation: A Review, *Ceram. Int.*, 2016, **42**, 35–48.
- J. Masek, B. Novosel and M. Marinsek, Ni-YSZ SOFC Anodes-Minimization of Carbon Deposition, *J. Eur. Ceram. Soc.*, 2007, **27**, 487–491.
- S. P. Jiang, X. J. Chen, S. H. Chan, J. T. Kwok and K. A. Khor,  $(\text{La}_{0.75}\text{Sr}_{0.25})(\text{Cr}_{0.5}\text{Mn}_{0.5})\text{O}_3/\text{YSZ}$  Composite Anodes for Methane Oxidation Reaction in Solid Oxide Fuel Cells, *Solid State Ionics*, 2006, **177**, 149–157.
- X. Yue and J. T. S. Irvine, Alternative Cathode Material for  $\text{CO}_2$  Reduction by High Temperature Solid Oxide Electrolysis Cells, *J. Electrochem. Soc.*, 2012, **159**, F442–F448.
- Y. Song, Z. Zhou, X. Zhang, Y. Zhou, H. Gong, H. Lv, Q. Liu, G. Wang and X. Bao, Pure  $\text{CO}_2$  Electrolysis over an Ni/YSZ Cathode in a Solid Oxide Electrolysis Cell, *J. Mater. Chem. A*, 2018, **6**, 13661–13667.
- B. Molero-Sanchez, J. Prado-Gonjal, D. Avila-Brandé, M. Chen, E. Moran and V. Birss, High Performance  $\text{La}_{0.3}\text{Ca}_{0.7}\text{Cr}_{0.3}\text{Fe}_{0.7}\text{O}_{3-\delta}$  Air Electrode for Reversible Solid Oxide Fuel Cell Applications, *Int. J. Hydrogen Energy*, 2015, **40**, 1902–1910.
- P. K. Addo, B. Molero-Sanchez, M. Chen, S. Paulson and V. Birss,  $\text{CO}/\text{CO}_2$  Study of High Performance  $\text{La}_{0.3}\text{Sr}_{0.7}\text{Fe}_{0.7}\text{Cr}_{0.3}\text{O}_{3-\delta}$  Reversible SOFC Electrodes, *Fuel Cells*, 2015, **15**, 689–696.
- B. Molero-Sanchez, P. Addo, A. Buyukaksoy, S. Paulson and V. Birss, Electrochemistry of  $\text{La}_{0.3}\text{Sr}_{0.7}\text{Fe}_{0.7}\text{Cr}_{0.3}\text{O}_{3-\delta}$  as an Oxygen and Fuel Electrode for RSOFCs, *Faraday Discuss.*, 2015, **182**, 159–175.
- S. Liu, Q. Liu and J.-L. Luo, Highly Stable and Efficient Catalyst with in Situ Exsolved Fe-Ni Alloy Nanospheres Socketed on an Oxygen Deficient Perovskite for Direct  $\text{CO}_2$  Electrolysis, *ACS Catal.*, 2016, **6**, 6219–6228.
- S. Park, Y. Kim, H. Han, Y. S. Chung, W. Yoon, J. Choi and W. B. Kim, In Situ Exsolved Co Nanoparticles on Ruddlesden-Popper Material as Highly Active Catalyst for  $\text{CO}_2$  Electrolysis to CO, *Appl. Catal., B*, 2019, **248**, 147–156.
- K. Chen, N. Ai and S. P. Jiang, Enhanced Electrochemical Performance and Stability of  $(\text{La,Sr})\text{MnO}_3\text{-(Gd,Ce)}\text{O}_2$  Oxygen Electrodes of Solid Oxide Electrolysis Cells by Palladium Infiltration, *Int. J. Hydrogen Energy*, 2012, **37**, 1301–1310.
- K. Chen, N. Ai and S. P. Jiang, Performance and Structural Stability of  $\text{Gd}_{0.2}\text{Ce}_{0.8}\text{O}_{1.9}$  Infiltrated  $\text{La}_{0.8}\text{Sr}_{0.2}\text{MnO}_3$  Nano-Structured Oxygen Electrodes of Solid Oxide Electrolysis Cells, *Int. J. Hydrogen Energy*, 2014, **39**, 10349–10358.
- Y.-F. Sun, Y.-Q. Zhang, J. Chen, J.-H. Li, Y.-T. Zhu, Y.-M. Zeng, B. S. Amirkhiz, J. Li, B. Hua and J.-L. Luo, New Opportunity for in Situ Exsolution of Metallic Nanoparticles on Perovskite Parent, *Nano Lett.*, 2016, **16**, 5303–5309.
- Y. Li, Y. Wang, W. Doherty, K. Xie and Y. Wu, Perovskite Chromates Cathode with Exsolved Iron Nanoparticles for Direct High-Temperature Steam Electrolysis, *ACS Appl. Mater. Interfaces*, 2013, **5**, 8553–8562.
- G. Yang, W. Zhou, M. Liu and Z. Shao, Enhancing Electrode Performance by Exsolved Nanoparticles: A Superior Cobalt-Free Perovskite Electrocatalyst for Solid Oxide Fuel Cells, *ACS Appl. Mater. Interfaces*, 2016, **8**, 35308–35314.
- T. Z. Sholkappner, C. P. Jacobson, S. J. Visco and L. C. De Jonghe, Synthesis of Dispersed and Contiguous Nanoparticles in Solid Oxide Fuel Cell Electrodes, *Fuel Cells*, 2008, **8**, 303–312.
- D. Neagu, T.-S. Oh, D. N. Miller, H. Menard, S. M. Bukhari, S. R. Gamble, R. J. Gorte, J. M. Vohs and J. T. S. Irvine, Nano-Socketed Nickel Particles with Enhanced Coking Resistance Grown in Situ by Redox Exsolution, *Nat. Commun.*, 2015, **6**, 8120.
- O. Kwon, S. Sengodan, K. Kim, G. Kim, H. Y. Jeong, J. Shin, Y.-W. Ju, J. W. Han and G. Kim, Exsolution Trends and Co-Segregation Aspects of Self-Grown Catalyst Nanoparticles in Perovskites, *Nat. Commun.*, 2017, **8**, 15967.

- 19 J. Zhu, H. Li, L. Zhong, P. Xiao, X. Xu, X. Yang, Z. Zhao and J. Li, Perovskite Oxides: Preparation, Characterizations, and Applications in Heterogeneous Catalysis, *ACS Catal.*, 2014, **4**, 2917–2940.
- 20 G. Tsekouras, D. Neagu and J. T. S. Irvine, Step-Change in High Temperature Steam Electrolysis Performance of Perovskite Oxide Cathodes with Exsolution of B-Site Dopants, *Energy Environ. Sci.*, 2013, **6**, 256–266.
- 21 D. Neagu, G. Tsekouras, D. N. Miller, H. Menard and J. T. S. Irvine, In Situ Growth of Nanoparticles through Control of Non-Stoichiometry, *Nat. Chem.*, 2013, **5**, 916.
- 22 L. Ye, M. Zhang, P. Huang, G. Guo, M. Hong, C. Li, J. T. S. Irvine and K. Xie, Enhancing CO<sub>2</sub> Electrolysis through Synergistic Control of Non-Stoichiometry and Doping to Tune Cathode Surface Structures, *Nat. Commun.*, 2017, **8**, 14785.
- 23 Y. Zhu, J. Dai, W. Zhou, Y. Zhong, H. Wang and Z. Shao, Synergistically Enhanced Hydrogen Evolution Electrocatalysis by in Situ Exsolution of Metallic Nanoparticles on Perovskites, *J. Mater. Chem. A*, 2018, **6**, 13582–13587.
- 24 H. Lv, L. Lin, X. Zhang, D. Gao, Y. Song, Y. Zhou, Q. Liu, G. Wang and X. Bao, In Situ Exsolved FeNi<sub>3</sub> Nanoparticles on Nickel Doped Sr<sub>2</sub>Fe<sub>1.5</sub>Mo<sub>0.5</sub>O<sub>6-δ</sub> Perovskite for Efficient Electrochemical CO<sub>2</sub> Reduction Reaction, *J. Mater. Chem. A*, 2019, **7**, 11967–11975.
- 25 M. Chanthanumataporn, J. Hui, X. Yue, K. Kakinuma, J. T. S. Irvine and K. Hanamura, Electrical Reduction of Perovskite Electrodes for Accelerating Exsolution of Nanoparticles, *Electrochim. Acta*, 2019, **306**, 159–166.
- 26 Y. Tian, Y. Liu, A. Naden, L. Jia, M. Xu, W. Cui, B. Chi, J. Pu, J. T. S. Irvine and J. Li, Boosting CO<sub>2</sub> Electrolysis Performance Via Calcium-Oxide-Looping Combined with in Situ Exsolved Ni-Fe Nanoparticles in a Symmetrical Solid Oxide Electrolysis Cell, *J. Mater. Chem. A*, 2020, **8**, 14895–14899.
- 27 K.-Y. Lai and A. Manthiram, Self-Regenerating Co-Fe Nanoparticles on Perovskite Oxides as a Hydrocarbon Fuel Oxidation Catalyst in Solid Oxide Fuel Cells, *Chem. Mater.*, 2018, **30**, 2515–2525.
- 28 Y.-F. Sun, J.-H. Li, Y.-Q. Zhang, B. Hua and J.-L. Luo, Bifunctional Catalyst of Core-Shell Nanoparticles Socketed on Oxygen-Deficient Layered Perovskite for Soot Combustion: In Situ Observation of Synergistic Dual Active Sites, *ACS Catal.*, 2016, **6**, 2710–2714.
- 29 J. Xiao, Q. Xu, D.-P. Huang, M. Chen, K. Zhao and B.-H. Kim, Evaluation of La<sub>0.3</sub>Ca<sub>0.7</sub>Fe<sub>1-γ</sub>Cr<sub>γ</sub>O<sub>3-δ</sub> (Y=0.1-0.3) Cathodes for Intermediate Temperature Solid Oxide Fuel Cells, *Mater. Res. Bull.*, 2017, **90**, 104–110.
- 30 M. F. Lu, E. V. Tsipis, J. C. Waerenborgh, A. A. Yaremchenko, V. A. Kolotygin, S. Bredikhin and V. V. Kharton, Thermomechanical, Transport and Anodic Properties of Perovskite-Type (La<sub>0.75</sub>Sr<sub>0.25</sub>)<sub>0.95</sub>Cr<sub>1-x</sub>Fe<sub>x</sub>O<sub>3-δ</sub>, *J. Power Sources*, 2012, **206**, 59–69.
- 31 E. Povoden, M. Chen, A. N. Grundy, T. Ivas and L. J. Gauckler, Thermodynamic Assessment of the La-Cr-O System, *J. Phase Equilib. Diff.*, 2009, **30**, 12–27.
- 32 E. Povoden-Karadeniz, A. N. Grundy, M. Chen, T. Ivas and L. J. Gauckler, Thermodynamic Assessment of the La-Fe-O System, *J. Phase Equilib. Diff.*, 2009, **30**, 351–366.
- 33 W. Kobsiriphat, B. D. Madsen, Y. Wang, M. Shah, L. D. Marks and S. A. Barnett, Nickel- and Ruthenium-Doped Lanthanum Chromite Anodes: Effects of Nanoscale Metal Precipitation on Solid Oxide Fuel Cell Performance, *J. Electrochem. Soc.*, 2010, **157**, B279–B284.
- 34 S.-H. Cui, J.-H. Li, X.-W. Zhou, G.-Y. Wang, J.-L. Luo, K. T. Chuang, Y. Bai and L.-J. Qiao, Cobalt Doped LaSrTiO<sub>3-δ</sub> as an Anode Catalyst: Effect of Co Nanoparticle Precipitation on SOFCs Operating on H<sub>2</sub>S-Containing Hydrogen, *J. Mater. Chem. A*, 2013, **1**, 9689–9696.
- 35 J.-H. Myung, D. Neagu, D. N. Miller and J. T. S. Irvine, Switching on Electrocatalytic Activity in Solid Oxide Cells, *Nature*, 2016, **537**, 528.
- 36 Y. Gao, Z. Lu, T. L. You, J. Wang, L. Xie, J. He and F. Ciucci, Energetics of Nanoparticle Exsolution from Perovskite Oxides, *J. Phys. Chem. Lett.*, 2018, **9**, 3772–3778.
- 37 J. M. Haag, S. A. Barnett, J. W. Richardson and K. R. Poeppelmeier, Structural and Chemical Evolution of the SOFC Anode La<sub>0.30</sub>Sr<sub>0.70</sub>Fe<sub>0.70</sub>Cr<sub>0.30</sub>O<sub>3-δ</sub> Upon Reduction and Oxidation: An in Situ Neutron Diffraction Study, *Chem. Mater.*, 2010, **22**, 3283–3289.
- 38 T.-S. Oh, E. K. Rahani, D. Neagu, J. T. S. Irvine, V. B. Shenoy, R. J. Gorte and J. M. Vohs, Evidence and Model for Strain-Driven Release of Metal Nanocatalysts from Perovskites During Exsolution, *J. Phys. Chem. Lett.*, 2015, **6**, 5106–5110.
- 39 D. Neagu, V. Kyriakou, I.-L. Roiban, M. Aouine, C. Tang, A. Caravaca, K. Kousi, I. Schreur-Piet, I. S. Metcalfe, P. Vernoux, M. C. M. van de Sanden and M. N. Tsampas, In Situ Observation of Nanoparticle Exsolution from Perovskite Oxides: From Atomic Scale Mechanistic Insight to Nanostructure Tailoring, *ACS Nano*, 2019, **13**, 12996–13005.
- 40 Y. Gao, D. Chen, M. Saccoccio, Z. Lu and F. Ciucci, From Material Design to Mechanism Study: Nanoscale Ni Exsolution on a Highly Active A-Site Deficient Anode Material for Solid Oxide Fuel Cells, *Nano Energy*, 2016, **27**, 499–508.
- 41 D. Neagu, E. I. Papaioannou, W. K. W. Ramli, D. N. Miller, B. J. Murdoch, H. Menard, A. Umar, A. J. Barlow, P. J. Cumpson, J. T. S. Irvine and I. S. Metcalfe, Demonstration of Chemistry at a Point through Restructuring and Catalytic Activation at Anchored Nanoparticles, *Nat. Commun.*, 2017, **8**, 1855.
- 42 R. Thalinger, M. Gocyla, M. Heggen, B. Klotzer and S. Penner, Exsolution of Fe and SrO Nanorods and Nanoparticles from Lanthanum Strontium Ferrite La<sub>0.6</sub>Sr<sub>0.4</sub>FeO<sub>3-δ</sub> Materials by Hydrogen Reduction, *J. Phys. Chem. C*, 2015, **119**, 22050–22056.
- 43 H. Lv, L. Lin, X. Zhang, Y. Song, H. Matsumoto, C. Zeng, N. Ta, W. Liu, D. Gao, G. Wang and X. Bao, In Situ Investigation of Reversible Exsolution/Dissolution of CoFe Alloy Nanoparticles in a Co-Doped Sr<sub>2</sub>Fe<sub>1.5</sub>Mo<sub>0.5</sub>O<sub>6-δ</sub> Cathode for CO<sub>2</sub> Electrolysis, *Adv. Mater.*, 2020, **32**, 1906193.



- 44 T. Zhu, H. E. Troiani, L. V. Mogni, M. Han and S. A. Barnett, Ni-Substituted Sr(Ti,Fe)O<sub>3</sub> SOFC Anodes: Achieving High Performance Via Metal Alloy Nanoparticle Exsolution, *Joule*, 2018, **2**, 478–496.
- 45 P. K. Addo, B. Molero-Sanchez, A. Buyukaksoy, S. Paulson and V. Birss, Sulfur Tolerance of La<sub>0.3</sub>M<sub>0.7</sub>Fe<sub>0.7</sub>Cr<sub>0.3</sub>O<sub>3-δ</sub> (M = Sr, Ca) Solid Oxide Fuel Cell Anodes, *ECS Trans.*, 2015, **66**, 219–228.
- 46 S. Liu, Q. Liu and J.-L. Luo, The Excellence of La(Sr)Fe(Ni)O<sub>3</sub> as an Active and Efficient Cathode for Direct CO<sub>2</sub> Electrochemical Reduction at Elevated Temperatures, *J. Mater. Chem. A*, 2017, **5**, 2673–2680.
- 47 Y. Zhou, Z. Zhou, Y. Song, X. Zhang, F. Guan, H. Lv, Q. Liu, S. Miao, G. Wang and X. Bao, Enhancing CO<sub>2</sub> Electrolysis Performance with Vanadium-Doped Perovskite Cathode in Solid Oxide Electrolysis Cell, *Nano Energy*, 2018, **50**, 43–51.
- 48 S. Primdahl and M. Mogensen, Gas Conversion Impedance: A Test Geometry Effect in Characterization of Solid Oxide Fuel Cell Anodes, *J. Electrochem. Soc.*, 1998, **145**, 2431–2438.
- 49 S. Primdahl and M. Mogensen, Gas Diffusion Impedance in Characterization of Solid Oxide Fuel Cell Anodes, *J. Electrochem. Soc.*, 1999, **146**, 2827–2833.
- 50 S. B. Adler, Factors Governing Oxygen Reduction in Solid Oxide Fuel Cell Cathodes, *Chem. Rev.*, 2004, **104**, 4791–4844.
- 51 Q. X. Fu, F. Tietz and D. Stover, La<sub>0.4</sub>Sr<sub>0.6</sub>Ti<sub>1-x</sub>Mn<sub>x</sub>O<sub>3-δ</sub> Perovskites as Anode Materials for Solid Oxide Fuel Cells, *J. Electrochem. Soc.*, 2006, **153**, D74.
- 52 B. A. Boukamp and H. J. M. Bouwmeester, Interpretation of the Gerischer Impedance in Solid State Ionics, *Solid State Ionics*, 2003, **157**, 29–33.
- 53 X. Yue and J. T. S. Irvine, Impedance Studies on LSCM/GDC Cathode for High Temperature CO<sub>2</sub> Electrolysis, *Electrochem. Solid-State Lett.*, 2012, **15**, B31.
- 54 A. K. Opitz, A. Nenning, C. Rameshan, M. Kubicek, T. Gotsch, R. Blume, M. Havecker, A. Knop-Gericke, G. Rupprechter, B. Klotzer and J. Fleig, Surface Chemistry of Perovskite-Type Electrodes During High Temperature CO<sub>2</sub> Electrolysis Investigated by Operando Photoelectron Spectroscopy, *ACS Appl. Mater. Interfaces*, 2017, **9**, 35847–35860.
- 55 D. Papargyriou, D. N. Miller and J. T. S. Irvine, Exsolution of Fe-Ni Alloy Nanoparticles from (La,Sr)(Cr,Fe,Ni)O<sub>3</sub> Perovskites as Potential Oxygen Transport Membrane Catalysts for Methane Reforming, *J. Mater. Chem. A*, 2019, **7**, 15812–15822.