



Cite this: *Org. Biomol. Chem.*, 2015, **13**, 2866

Received 4th October 2014,
Accepted 24th December 2014

DOI: 10.1039/c4ob02122c

www.rsc.org/obc

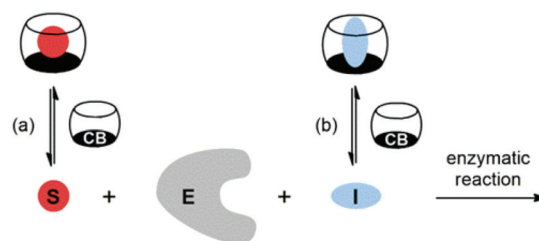
Cucurbiturils as supramolecular inhibitors of DNA restriction by type II endonucleases†

Cátia Parente Carvalho,^a Amir Norouzy,^b Vera Ribeiro,^c Werner M. Nau^b and Uwe Pischel^{*a}

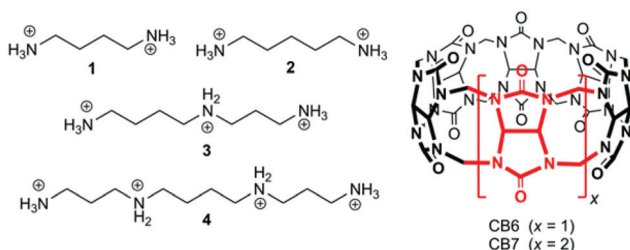
Cucurbiturils (CB6 and CB7) were shown to inhibit the enzymatically catalyzed restriction of plasmids and linear DNA. This effect can be inverted by supramolecular masking of the macrocycles through competitive complexation with polyamines. These experiments provide supramolecular control of biocatalytic processes.

Introduction

Cucurbit[*n*]urils (CB*n*) are water-soluble macrocyclic hosts featuring *n* glycoluril units linked by methylene bridges (see CB6 and CB7 in Scheme 1).^{1–5} Thus far the homologues with *n* = 6, 7, and 8 have received most attention in supramolecular applications, many of which are biologically related.^{5–21} The poten-



Scheme 2 Supramolecular control of enzymatic catalysis by host macrocycles (e.g., CB*n*) via (a) substrate binding or (b) inhibitor binding. E: enzyme, S: substrate, I: inhibitor.



Scheme 1 Structures of polyamines 1–4 and CB*n* host macrocycles.

^aCIQSO-Center for Research in Sustainable Chemistry and Department of Chemical Engineering, Physical Chemistry and Organic Chemistry, University of Huelva, Campus El Carmen s/n, E-21071 Huelva, Spain. E-mail: uwe.pischel@diq.uhu.es; Fax: +34 959 21 99 83; Tel: +34 959 21 99 82

^bDepartment of Life Sciences and Chemistry, Jacobs University Bremen, Campus Ring 1, D-28759 Bremen, Germany

^cCenter for Molecular and Structural Biomedicine, CBME/IBB, LA, University of Algarve, Faculty of Science and Technology, Campus de Gambelas, 8005-139 Faro, Portugal

†Electronic supplementary information (ESI) available: DNA extraction, details of restriction assays, control experiments (CB*n*–DNA interaction, EDTA addition), and amino acid sequences of the investigated enzymes. See DOI: 10.1039/c4ob02122c

tial of CB*n* macrocycles to control functions in biological chemistry *via* reversible supramolecular interactions benefits from their good water solubility, high binding constants,²² and low cellular toxicity.^{23,24}

According to strategies (a) and (b), shown in Scheme 2, several protocols for biological control by cucurbiturils have been developed. For instance, CB7 is known to protect peptides from protease-catalyzed hydrolytic degradation, which is an example of substrate-related supramolecular control of biological functions by CB*n* macrocycles (strategy (a)).^{10,25} As an example for path (b) CB7 can complex inhibitors of bovine carbonic anhydrase or acetylcholinesterase and, thereby, activate catalytic reactions through competitive displacement of the inhibitor from the enzyme.²⁶ In the context of enzymatic transformations of DNA substrates, it was shown that the spermidine-CB6 complex (3-CB6) catalyzes the topoisomerization of supercoiled plasmid DNA and that CB6 can invert the promoting effect of spermine (4) in plasmid DNA restriction (strategy (b)).²⁷ It is noteworthy that while there are case studies of organic hosts that interact with enzymes or other proteins,^{28–31} the direct modulation of the biocatalytic activity of the enzyme itself by CB*n* hosts has remained elusive. In the course of our research on cucurbituril–biomolecule interactions, we came across an unprecedented inhibition of DNA restriction, a process that plays a fundamental role in the defense of organisms against foreign DNA.



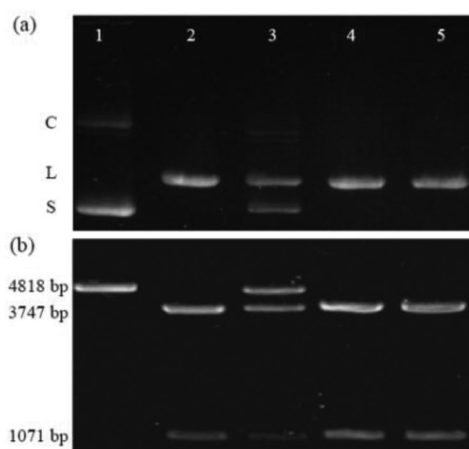


Fig. 1 Electrophoretic analysis of *KpnI* enzymatic hydrolysis of (a) plasmid pGL3-Basic DNA (lane 1: DNA alone; lane 2: reaction in the absence of other additives; lane 3: reaction in the presence of CB6; lane 4: reaction in the presence of only **4**; lane 5: reaction in the presence of stoichiometric amounts of **4** and CB6; C = relaxed/nicked circular DNA; L = linear DNA; S = supercoiled DNA) and (b) the same set of experiments but with linear pGL3-Basic DNA as a substrate, CB7 as a host, and **1** as a competitive binder in 5-fold excess.

Results and discussion

The first example is the hydrolysis of DNA at GGTACC sites catalyzed by the endonuclease *KpnI* (see Fig. 1a). Fig. 1a shows the corresponding experiments with plasmid pGL3-Basic DNA as a substrate, which were conducted under identical conditions concerning pH, buffer composition, temperature, and digestion time.[‡] The electrophoresis of the plasmid DNA alone evidenced its preferential presence in the supercoiled form (lane 1). Upon enzymatic hydrolysis of the plasmid DNA, the linear form appeared (lane 2). However, in the presence of 6 μM CB6 ($[\text{CB6}]/[\text{KpnI}] = 4542$, lane 3) the enzymatic reaction was significantly hindered leading to 47% inhibition with respect to the absence of the macrocycle. The incomplete enzymatic reaction was confirmed by the observation of a substantial amount of non-restricted plasmid DNA. The restriction reaction can be re-activated by the addition of the strongly competitive polycationic binder **4** ($K = 3.3 \times 10^9 \text{ M}^{-1}$);³² lane 5 with $[\text{4}]/[\text{CB6}] = 1$. As a control experiment, the enzymatic hydrolysis was also performed in the presence of **4** but in the absence of CB6 (lane 4 vs. 5). The result confirmed that **4** alone had no effect on the DNA restriction under the selected experimental conditions. The re-activation was also seen for the addition of a stoichiometric amount of the strongly CB6-binding amine **3** ($K = 4.1 \times 10^8 \text{ M}^{-1}$); see ESI.[†]³²

In another series of experiments,[‡] CB7 was used as a supramolecular inhibitor of the restriction of plasmid or linearized pGL3-Basic DNA by various endonucleases (*KpnI*, *SacI*, and *XapI*).[§] The results are shown in Table 1. First, the macrocycle concentration was adjusted to affect ca. 50% inhibition, which required 90–500 μM CB7 (Table 1). Second, polyamines **1**–**3**

Table 1 Restriction assays (*KpnI*, *SacI*, and *XapI* endonucleases) of plasmid and linear pGL3-Basic DNA in the presence of CB7 as a macrocycle and re-activation by addition of the polyamines putrescine (**1**), cadaverine (**2**), and spermidine (**3**)

	Plasmid DNA			Linear DNA ^a		
	<i>KpnI</i> ^b	<i>SacI</i> ^c	<i>XapI</i> ^d	<i>KpnI</i> ^b	<i>SacI</i> ^c	<i>XapI</i> ^d
[CB7]/ μM ^e	90	250	500	200	350	500
Inhibition (%)	32	42	54	48	52	58
[1]/[CB7] ^f	5	5	5	5	5	5
[2]/[CB7] ^f	1	2	2	1	2	2
[3]/[CB7] ^f	2	1	1	2	1	1

^a Obtained by total restriction of plasmid pGL3-Basic DNA with *PdmI* endonuclease. ^b Restriction at GGTACC sites. ^c Restriction at GAGCTC sites. ^d Restriction at RAATT sites. ^e Optimized CB7 concentration to achieve ca. 50% inhibition. ^f Optimized polyamine/macrocycle ratio for complete re-activation (<5% inhibition); binding constants ($K/10^6 \text{ M}^{-1}$) with CB7 in water at pH 7 (this work): 0.11 for **1**, 20 for **2**, and 1.2 for **3**.

were screened for their potential to fully re-activate the DNA restriction, which required 1–5 equivalents of a competitor, depending on their relative affinity to the macrocycle (see stoichiometries in Table 1). As a representative example, the electrophoretic analysis of the *KpnI*-induced hydrolysis of linear pGL3-Basic DNA, its inhibition by CB7, and the re-activation by addition of **1** is shown in Fig. 1b. The DNA (lane 1) showed a band corresponding to the expected 4818 base pairs (bp). The restriction reaction (lane 2) led to fragments with 3747 and 1071 bp. The presence of 200 μM CB7 (lane 3) hindered the enzymatic hydrolysis (48% inhibition), which was reflected by a substantial residual band of unrestricted DNA (4818 bp). The addition of amine **1** ($[\text{1}]/[\text{CB7}] = 5$) blocked CB7 and thereby re-activated the process again (lane 5). Lane 4 shows the control in the presence of only **1** for which no effect was observed. While it is known that polyamines also bind to DNA,³³ their apparent binding constants are ca. 1–2 orders of magnitude lower than the ones for the respective CB7 complexes (compared to the CB6 complexes they are even ca. 3–4 orders of magnitude lower). This excludes competition between CBn and DNA for the added polyamines under the experimental conditions.[‡]

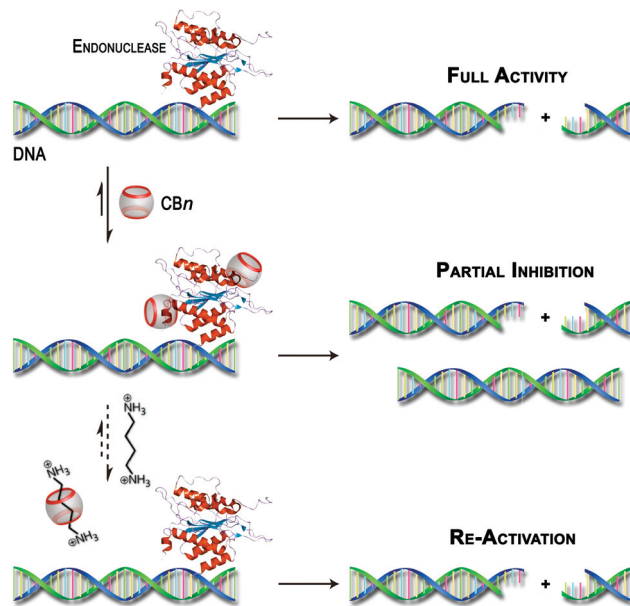
The variety of DNA conformations and endonucleases, for which the inhibition by CBn was observed, points to a general effect. A previous literature report ruled out significant supramolecular interactions between CBn and DNA, based on the absence of competitive displacement of a DNA-intercalating dye.²¹ In line with this, our own circular dichroism (CD) spectroscopic measurements did not reveal any sign of direct supramolecular interaction between model DNA and CBn (see ESI[†]). Additional support came from the observation of unchanged gel mobility of circular and linear pGL3-Basic DNA in the absence and presence of excess macrocycles (see ESI[†]). On this basis, an interaction with the DNA substrate was ruled out as the reason for the inhibitory effect. The possibility of metal-ion sequestration from the buffer solution by CBn is another factor that deserved scrutiny.³⁴ In particular, mag-



nesium ions (Mg^{2+}) are known to serve as an essential cofactor of the type II endonucleases employed herein.³⁵ A control experiment revealed that EDTA (1 mM), a strong Mg^{2+} chelator, did not lead to endonuclease inhibition as tested for the example of *XapI*; see ESI†. The EDTA concentration corresponds to double the CB7 concentration used for the experiments with this enzyme. This rules out metal-ion sequestration as a cause of the observed inhibition, at least at the applied CBn concentrations (maximum of 500 μM). It is noteworthy that, bovine serum albumin (BSA) is often present in the digestion solutions, fulfilling the role of a stabilizer and a protective agent against impurities that may be problematic for the restriction reaction. On the one hand, for the BSA concentration used in our assays (*ca.* 1.5 μM for *KpnI* and *XapI*; note that *SacI* does not require BSA) no protection against the inhibitory action of CBn was noted. Only at much higher BSA concentrations (>30 μM ; tested for the example of the *XapI* assay) the CB-induced inhibition was suppressed. On the other hand, the inhibitory action of CB7 in the absence of BSA was maintained (observed for the example of *KpnI* in BSA-free reaction buffer; see ESI†). Thereby, the interaction of CBn with BSA can be excluded as well as the underlying reason for the observed inhibitory effect.

There is ample evidence in the literature for host-guest interactions between CBn and peptides or proteins.^{13,36,37} It is generally accepted that peptides with N-terminal aromatic amino acids (Trp, Phe, Tyr) or long alkylamino chains (Lys) can form strong complexes with CB7 or CB6, respectively.^{13,14,38–40} However, also amino acids at the C-terminus and even internal ones can form complexes, albeit somewhat weaker.^{38–41} The binding of proteins to CBn is naturally more complex and depends on the availability of the mentioned amino acids at the surface of the biomolecular structure. One example of an efficient CBn-protein interaction is that with insulin, which features an exposed Phe N-terminal residue.¹⁶ Unfortunately, for the investigated restriction enzymes, predictions on accessible binding sites for CBn are not straightforward to make, especially because they are rich in amino acids displaying the required recognition motifs (Lys, Tyr, Trp, and Phe; see amino acid sequences of the enzymes in ESI†). Additionally, their inhibitory action could be caused by both, binding near the DNA binding domain of the enzyme or through a more remote binding associated with an allosteric effect.¹⁶

Unfortunately, our efforts to obtain direct experimental evidence (by UV-vis absorption spectroscopy, CD spectroscopy or MALDI-TOF mass spectrometry) for the interaction between the CBn macrocycles and the enzymes were hampered, among others, by the presence of significant concentrations of BSA. However, other possible reasons for the observed inhibitory effect, such as interactions with the substrate itself, metal-ion sequestration, or masking of buffer components were clearly excluded (see above). The combined experimental observations and the literature precedence of protein-CBn interactions provide at least an indirect hint on the origins of the observed effects as proposed in Scheme 3.



Scheme 3 Schematic illustration of the postulated inhibition of DNA restriction enzymes by CBn hosts and their re-activation by competitive binding with polyamines.

Conclusions

In conclusion, we demonstrated that CBn macrocycles can inhibit the enzymatic hydrolysis of DNA substrates. The reversible nature of the observed effects was underpinned by the successful re-activation of the type II endonuclease activity *via* addition of CBn-binding polyamines. The supramolecular methodology could find potential applications in molecular biology, where⁴² the use of restriction enzymes plays a crucial role.

Acknowledgements

This work was supported by the Spanish MINECO (grant CTQ2011-28390 for U.P.), FEDER, COST (CM1005 “Supramolecular Chemistry in Water”), the DFG (grant NA-686/5 for A.N. and W.M.N.), and the Portuguese FCT (fellowship SFRH/BD/81628/2011 for C.P.C. and grant PEst-OE/EQB/LA0023/2013 for V.R.). We thank Alexandra I. Lazar (Jacobs University Bremen) for the assistance in MALDI-TOF experiments.

Notes and references

‡ Reaction conditions: [DNA] = 9.6 nM corresponding to [bp] = 46.3 μM ; [*KpnI*] = 0.5 $\text{U } \mu\text{L}^{-1}$ in a 10 mM Tris-HCl buffer (pH 7.5) containing 10 mM MgCl_2 , 0.02% Triton X-100, 0.1 mg mL^{-1} bovine serum albumin (BSA); [*SacI*] = 0.5 $\text{U } \mu\text{L}^{-1}$ in 10 mM Tris-HCl buffer (pH 7.5) containing 7 mM MgCl_2 , 50 mM KCl, 1 mM DTT; [*XapI*] = 0.025 $\text{U } \mu\text{L}^{-1}$ in 33 mM Tris-acetate buffer (pH 7.9) containing 10 mM $\text{Mg}(\text{OAc})_2$, 66 mM KOAc, 0.1 mg mL^{-1} BSA; all at 37 $^\circ\text{C}$ for 3 h.

The degree of inhibition was evaluated by integration of the optical density of electrophoresis DNA bands by using the ImageJ program.⁴³ Each experiment was carried out at least three times.



§ The plasmid pGL3-Basic DNA was amplified in DH5α *E. coli* cells (see ESI†) and purified using the NucleoBond® Xtra Midi EF kit from Macherey-Nagel. The plasmid DNA was linearized by total restriction with *PdmI* endonuclease ([DNA] = 383.8 nM; [*PdmI*] = 2 U μL⁻¹, 33 mM Tris-acetate buffer (pH 7.9), 10 mM Mg(OAc)₂, 66 mM KOAc, 0.1 mg mL⁻¹ BSA; 37 °C for 12 h) and purification by ethanol precipitation. The enzymes *KpnI*, *XapI*, and *PdmI* were purchased from Thermo Scientific. *SacI* was available from Promega. *KpnI* without added BSA was supplied by Sigma-Aldrich. Additional information about the enzymes is available at <http://rebase.neb.com>.⁴⁴

- J. Lagona, P. Mukhopadhyay, S. Chakrabarti and L. Isaacs, *Angew. Chem., Int. Ed.*, 2005, **44**, 4844–4870.
- W. M. Nau and O. A. Scherman, *Isr. J. Chem.*, 2011, **51**, 492 (thematic issue about cucurbiturils).
- E. Masson, X. X. Ling, R. Joseph, L. Kyeremeh-Mensah and X. Y. Lu, *RSC Adv.*, 2012, **2**, 1213–1247.
- B. C. Pemberton, R. Raghunathan, S. Volla and J. Sivaguru, *Chem. – Eur. J.*, 2012, **18**, 12178–12190.
- I. Ghosh and W. M. Nau, *Adv. Drug Delivery Rev.*, 2012, **64**, 764–783.
- J. Vázquez, P. Remón, R. N. Dsouza, A. I. Lazar, J. F. Arteaga, W. M. Nau and U. Pischel, *Chem. – Eur. J.*, 2014, **20**, 9897–9901.
- J. P. Da Silva, R. Choudhury, M. Porel, U. Pischel, S. Jockusch, P. C. Hubbard, V. Ramamurthy and A. V. M. Canário, *ACS Chem. Biol.*, 2014, **9**, 1432–1436.
- H. H. Lee, T. S. Choi, S. J. C. Lee, J. W. Lee, J. Park, Y. H. Ko, W. J. Kim, K. Kim and H. I. Kim, *Angew. Chem., Int. Ed.*, 2014, **53**, 7461–7465.
- N. Saleh, I. Ghosh and W. M. Nau, in *Supramolecular Systems in Biomedical Fields*, ed. H. J. Schneider, RSC Publishing, 2013, pp. 164–212.
- L. A. Logsdon and A. R. Urbach, *J. Am. Chem. Soc.*, 2013, **135**, 11414–11416.
- D. Ma, B. Zhang, U. Hoffmann, M. Grosse Sundrup, M. Eikermann and L. Isaacs, *Angew. Chem., Int. Ed.*, 2012, **51**, 11358–11362.
- D. Ma, G. Hettiarachchi, D. Nguyen, B. Zhang, J. B. Wittenberg, P. Y. Zavalij, V. Briken and L. Isaacs, *Nat. Chem.*, 2012, **4**, 503–510.
- A. R. Urbach and V. Ramalingam, *Isr. J. Chem.*, 2011, **51**, 664–678.
- L. A. Logsdon, C. L. Schardon, V. Ramalingam, S. K. Kwee and A. R. Urbach, *J. Am. Chem. Soc.*, 2011, **133**, 17087–17092.
- D.-W. Lee, K. M. Park, M. Banerjee, S. H. Ha, T. Lee, K. Suh, S. Paul, H. Jung, J. Kim, N. Selvapalam, S. H. Ryu and K. Kim, *Nat. Chem.*, 2011, **3**, 154–159.
- J. M. Chinai, A. B. Taylor, L. M. Ryno, N. D. Hargreaves, C. A. Morris, P. J. Hart and A. R. Urbach, *J. Am. Chem. Soc.*, 2011, **133**, 8810–8813.
- C. Parente Carvalho, V. D. Uzunova, J. P. Da Silva, W. M. Nau and U. Pischel, *Chem. Commun.*, 2011, **47**, 8793–8795.
- R. B. Wang, B. C. MacGillivray and D. H. Macartney, *Dalton Trans.*, 2009, 3584–3589.
- N. Saleh, A. L. Koner and W. M. Nau, *Angew. Chem., Int. Ed.*, 2008, **47**, 5398–5401.
- A. C. Bhasikuttan, J. Mohanty, W. M. Nau and H. Pal, *Angew. Chem., Int. Ed.*, 2007, **46**, 4120–4122.
- H. Isobe, N. Tomita, J. W. Lee, H.-J. Kim, K. Kim and E. Nakamura, *Angew. Chem., Int. Ed.*, 2000, **39**, 4257–4260.
- L. P. Cao, M. Šekutor, P. Y. Zavalij, K. Mlinarić-Majerski, R. Glaser and L. Isaacs, *Angew. Chem., Int. Ed.*, 2014, **53**, 988–993.
- V. D. Uzunova, C. Cullinane, K. Brix, W. M. Nau and A. I. Day, *Org. Biomol. Chem.*, 2010, **8**, 2037–2042.
- G. Hettiarachchi, D. Nguyen, J. Wu, D. Lucas, D. Ma, L. Isaacs and V. Briken, *PLoS One*, 2010, **5**, e10514.
- A. Hennig, G. Ghale and W. M. Nau, *Chem. Commun.*, 2007, 1614–1616.
- S. Ghosh and L. Isaacs, *J. Am. Chem. Soc.*, 2010, **132**, 4445–4454.
- H. Isobe, S. Sato, J. W. Lee, H.-J. Kim, K. Kim and E. Nakamura, *Chem. Commun.*, 2005, 1549–1551.
- D. Bier, R. Rose, K. Bravo-Rodriguez, M. Bartel, J. M. Ramirez-Anguita, S. Dutt, C. Wilch, F.-G. Klärner, E. Sanchez-Garcia, T. Schrader and C. Ottmann, *Nat. Chem.*, 2013, **5**, 234–239.
- R. E. McGovern, H. Fernandes, A. R. Khan, N. P. Power and P. B. Crowley, *Nat. Chem.*, 2012, **4**, 527–533.
- A. Koralewska, W. Augustyniak, A. Temeriusz and M. Kańska, *J. Inclusion Phenom. Macrocyclic Chem.*, 2004, **49**, 193–197.
- K. Matsubara, Y. Ando, T. Irie and K. Uekama, *Pharm. Res.*, 1997, **14**, 1401–1405.
- M. V. Rekharsky, Y. H. Ko, N. Selvapalam, K. Kim and Y. Inoue, *Supramol. Chem.*, 2007, **19**, 39–46.
- A. Kabir, M. Hossain and G. S. Kumar, *J. Chem. Thermodyn.*, 2013, **57**, 445–453.
- V. F. Pais, E. F. A. Carvalho, J. P. C. Tomé and U. Pischel, *Supramol. Chem.*, 2014, **26**, 642–647.
- A. Pingoud and A. Jeltsch, *Nucleic Acids Res.*, 2001, **29**, 3705–3727.
- J. W. Lee, S. W. Heo, S. J. C. Lee, J. Y. Ko, H. Kim and H. I. Kim, *J. Am. Soc. Mass Spectrom.*, 2013, **24**, 21–29.
- F. Biedermann and W. M. Nau, *Angew. Chem., Int. Ed.*, 2014, **53**, 5694–5699.
- G. Ghale, N. Kuhnert and W. M. Nau, *Nat. Prod. Commun.*, 2012, **7**, 343–348.
- G. Ghale, V. Ramalingam, A. R. Urbach and W. M. Nau, *J. Am. Chem. Soc.*, 2011, **133**, 7528–7535.
- M. V. Rekharsky, H. Yamamura, Y. H. Ko, N. Selvapalam, K. Kim and Y. Inoue, *Chem. Commun.*, 2008, 2236–2238.
- S. Sonzini, S. T. J. Ryan and O. A. Scherman, *Chem. Commun.*, 2013, **49**, 8779–8781.
- S.-H. Chan, B. L. Stoddard and S.-Y. Xu, *Nucleic Acids Res.*, 2011, **39**, 1–18.
- C. A. Schneider, W. S. Rasband and K. W. Eliceiri, *Nat. Methods*, 2012, **9**, 671–675.
- R. J. Roberts, T. Vincze, J. Posfai and D. Macelis, *Nucleic Acids Res.*, 2007, **35**, D269–D270.

