



Cite this: *Energy Adv.*, 2022,
1, 38

An aromatic ionomer in the anode catalyst layer improves the start-up durability of polymer electrolyte fuel cells†

Toshiki Tanaka,^a Makoto Uchida^{✉b} and Kenji Miyatake^{✉bcd}

A sulfonated polyphenylene ionomer (SPP-QP) was used as a catalyst layer binder in polymer electrolyte fuel cells. SPP-QP functioned well in the proton-conducting thin layers to show high electrochemically active surface area (ECSA) for the Pt catalysts. When used as the cathode binder, however, specific adsorption of SPP-QP on the Pt catalyst lowered the oxygen reduction reaction (ORR) activity, resulting in lower fuel cell performance compared to that using Nafion binder. In contrast, SPP-QP supported the hydrogen oxidation reaction (HOR) in the anode, with a negligibly small overpotential, similar to that for Nafion. Furthermore, the fuel cell with SPP-QP as the anode binder (SPP-QP(a)-cell) exhibited improved durability in a gas exchange cycle test simulating start-up conditions (according to the protocol suggested by the Fuel Cell Commercialization Conference of Japan). After 1000 cycles, the remaining ECSA was 37% for the SPP-QP(a)-cell, compared to 19% for the Nafion(a)-cell. The better durability was further demonstrated in the *I*-*V* curves, where the cell voltage remaining at a current density of 0.8 A cm⁻² was 80% of the pre-test value for the SPP-QP(a)-cell compared to 47% for the Nafion(a)-cell. The specific adsorption of SPP-QP on the Pt catalyst suppressed the unfavorable ORR in the anode and accordingly the so-called reverse current reaction under start-up conditions, mitigating the degradation of the cathode catalyst layer.

Received 11th October 2021,
Accepted 22nd November 2021

DOI: 10.1039/d1ya00024a

rsc.li/energy-advances

Introduction

Fuel cells are clean, efficient energy generating devices that should play a crucial role in the realization of a hydrogen-based society. Among several types of fuel cells, polymer electrolyte fuel cells (PEFCs) using proton exchange membranes as the electrolyte have attracted considerable interest, in particular, for automobile and residential applications over the past decade. In order for PEFCs to become more widespread in the global market, improvement of the performance and durability as well as cost reduction are required.^{1,2} To address those issues, significant efforts have been devoted to the development of component materials, including electrocatalysts and electrolyte membranes.^{3–6} Proton-conductive ionomers are used as binders in the catalyst layers and are thus

particularly important in terms of how they affect the electrocatalytic activity for the oxygen reduction and hydrogen oxidation reactions (ORR and HOR) in operating PEFCs. Currently, perfluorinated ionomers such as Nafion are most used in commercial PEFCs due to their high proton conductivity and chemical stability. However, the fully fluorinated chemical structure leads to high production costs. Their glass transition temperature is relatively low (*ca.* 100–110 °C) and becomes even lower under hydrated conditions, which limits the upper operable temperature of PEFCs, whereas the US Department of Energy (DOE) and the New Energy and Industrial Technology Development Organization (NEDO) of Japan both target an operating temperature of 120 °C within the next decade. Therefore, there is a strong demand for proton-conductive ionomers with higher thermal stability and lower production cost.^{7–9} Aromatic ionomers are some of the more promising candidates and have been extensively investigated. For example, sulfonated poly(phenylene)s,^{10,11} poly(ether ether ketone)s,¹² poly(arylene ether sulfone)s¹³ and polyimides¹⁴ can be found as proton-exchange membranes in the literature, and some of these have been applied as electrode binders.^{15–21} Recently, E. Balogun *et al.* reported high fuel cell performance above 1 W cm⁻² using their original polyphenylene ionomer.²² We have developed polyphenylene ionomer (SPP-QP) membranes, which consist

^a Interdisciplinary Graduate School of Medicine and Engineering, University of Yamanashi, 4 Takeda, Kofu, Yamanashi 400-8510, Japan

^b Fuel Cell Nanomaterials Center, University of Yamanashi, 6-43 Miyamae-cho, Kofu 400-0021, Japan. E-mail: miyatake@yamanashi.ac.jp

^c Clean Energy Research Center, University of Yamanashi, 4 Takeda, Kofu, Yamanashi 400-8510, Japan

^d Department of Applied Chemistry, Waseda University, Tokyo 169-8555, Japan

† Electronic supplementary information (ESI) available. See DOI: 10.1039/d1ya00024a



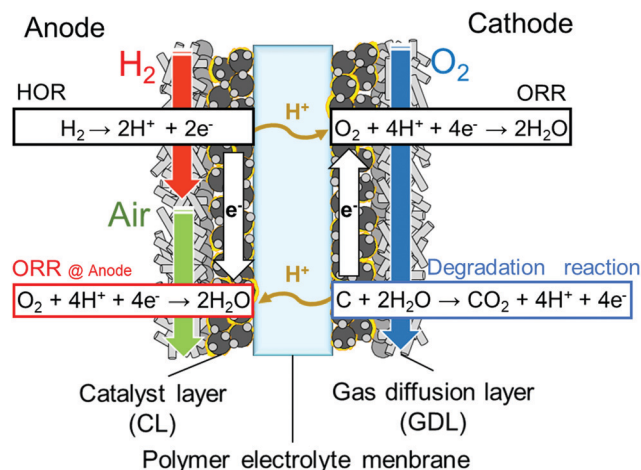


Fig. 1 Mechanism of reverse current reaction during start-up of a PEFC.

only of phenylene rings and sulfonic acid groups. Unlike typical aromatic ionomers, the absence of heteroatoms in groups such as ethers and sulfones in the polymer main chain contributed to excellent chemical stability, in addition to high proton conductivity over a wide humidity range, comparable to that of Nafion. High fuel cell performance and durability have been achieved with the SPP-QP membrane in cells in which Nafion was used in the catalyst layers.²³ As a next step, it is of great interest to investigate the properties of SPP-QP as an electrode binder. In the present study, SPP-QP was evaluated as the catalyst layer binder for both the anode and cathode. It is well-known that the carbon support in the cathode catalyst layer corrodes during the cell start-up, most likely due to the high cathode potential (>1.5 V vs. RHE) due to the reverse current reaction caused by the ORR in the anode (Fig. 1).^{24,25} In the literature, there have been several attempts to address this issue, including the use of more corrosion-resistant catalysts and support materials in the cathode.^{26,27} We report herein that strong “specific” adsorption of SPP-QP on the platinum surface suppressed the reduction of oxygen remaining in the anode as a reverse current reaction, and thus that it mitigated the degradation of the cathode catalyst layers in the accelerated durability test (or gas exchange durability test) simulating start-up conditions. Post-test analyses of the catalyst layers and fuel cell performance were carried out to support this claim.

Experimental

Preparation of membrane electrode assembly (MEA)

The SPP-QP ($\text{IEC} = 2.4$ mequiv g^{-1}) ionomer was synthesized according to the literature. A 5 wt% ionomer solution in dimethylacetamide (DMAc) was filtered through a $1\ \mu\text{m}$ disk filter prior to use. Nafion solution ($\text{IEC} = 0.95\text{--}1.03$ mequiv g^{-1} , D-521) was purchased from Dupont. A catalyst ink containing SPP-QP was prepared from the ionomer solution, Pt/CB (TEC10E50E, Tanaka Kikinzoku Kogyo, K. K.), ultrapure water, and DMAc. A catalyst ink containing Nafion was prepared from the ionomer solution, Pt/CB (TEC10E50E, Tanaka Kikinzoku Kogyo, K. K.), ultrapure water,

and ethanol. In both inks, the mass ratio of the ionomer to carbon (I/C) and solid/liquid ratio were set at 0.7 and 0.07 wt%, respectively. The mixture was ball-milled in a zirconia pod containing 20 5 mm zirconia beads at 270 rpm for 30 min. The resulting ink was sprayed onto one side of a Nafion membrane (NRE211, Dupont) using the pulse-swirl-spray technique (PSS, Nordson). Then, the catalyst ink was similarly sprayed onto the other side of the membrane to obtain a catalyst-coated membrane (CCM). The geometric electrode area was $29.16\ \text{cm}^2$ and the Pt loading was $0.50 \pm 0.05\ \text{mg cm}^{-2}$. The CCM was dried at $60\ ^\circ\text{C}$ overnight. The CCM was hot-pressed at $140\ ^\circ\text{C}$ and $10\ \text{kgf cm}^{-2}$ for 3 min and then sandwiched by two gas diffusion layers (29BC, SGL Carbon Group) and assembled into a JARI cell (Japan Automobile Research Institute).

Initial activation and cleaning of the cell

The single cell was placed in a fuel cell evaluation system (Panasonic Co.). For all cells with the catalyst layer containing SPP-QP or Nafion, initial activation²⁸ was carried out supplying oxygen to the SPP-QP electrode and hydrogen to the Nafion electrode at $80\ ^\circ\text{C}$ and 100% RH at a constant current density of $0.2\ \text{A cm}^{-2}$ for 12 h. Then, hydrogen was supplied to the anode and nitrogen ($100\ \text{mL min}^{-1}$) was supplied to the cathode, respectively, and the potential was swept between 0.075 and 1.0 V at a sweep rate of $20\ \text{mV s}^{-1}$ for 40 cycles. For the cell with the catalyst layer containing SPP-QP, nitrogen was exchanged to oxygen and the cell was operated at a constant current density of $1.0\ \text{A cm}^{-2}$ for 48 h to remove the residual DMAc solvent from the catalyst layer.

Fuel cell operation

The cell was operated at $80\ ^\circ\text{C}$ and 100% RH. Cyclic voltammograms (CV) were obtained with a potential sweep between 0.075 and 1.0 V at a sweep rate of $20\ \text{mV s}^{-1}$ with $100\ \text{mL min}^{-1}$ of hydrogen supply at the anode and nitrogen atmosphere in the cathode. From the obtained hydrogen adsorption peak and the Pt oxidation peak in the CV, the electrochemically active surface area (ECSA) and Pt oxidation charge (Q_{Pt}) were calculated, respectively. The Q_{Pt} was calculated from the anodic charge in the CV between 0.7–0.85 V subtracting the electric double layer charge (around 0.4 V) as the baseline. The polarization curves were measured at a constant current mode with hydrogen supplied to the anode and oxygen supplied to the cathode. The gas utilization percentages were 70% for hydrogen and 40% for oxygen. Polarization at the anode was measured by a hydrogen pump test²² under each measurement condition supplying hydrogen at $1\ \text{L min}^{-1}$.

Accelerated durability test

Gas exchange durability test was conducted at $45\ ^\circ\text{C}$ with the protocol shown in Table 1.²⁹

The degradation of the cathode catalyst was monitored by measuring CV every 200 cycles at $45\ ^\circ\text{C}$ and 100% RH.



Table 1 Protocol for gas exchange durability test

Step	Time (s)	Anode			Cathode		
		Gas	RH (%)	Flow rate (mL min ⁻¹)	Gas	RH (%)	Flow rate (mL min ⁻¹)
1	90	Air	0	360	Air	100	360
2	90	H ₂	100	38	Air	100	360
3	60	N ₂	0	180	N ₂	0	180

FIB-SIM

After the durability test, the recovered MEA was disassembled, sliced by a focused ion beam and analyzed by scanning ion microscopy (FIB, FB-2200, Hitachi High-Technologies Co., Ltd).

Results and discussion

Evaluation of the cell using SPP-QP as the cathode

Fig. 2 shows cyclic voltammograms of the cells using SPP-QP and Nafion as the cathode binder (hereinafter referred to as the SPP-QP(c)-cell and Nafion(c)-cell, respectively) at 80 °C. The CVs

Table 2 ECSA and Q_{Pt} values for the cathodes of the SPP-QP(c)-cell and Nafion(c)-cell

	100% RH		53% RH	
	ECSA (m ² g ⁻¹)	Q_{Pt} (C g ⁻¹)	ECSA (m ² g ⁻¹)	Q_{Pt} (C g ⁻¹)
SPP-QP(c)-cell	45.1 ± 0.3	29.1 ± 4.1	29.8 ± 4.0	0
Nafion(c)-cell	44.4 ± 0.2	62.5 ± 3.7	35.0 ± 1.1	37.0 ± 3.1

differed between the two cells, in particular, in the high potential region (0.6–1.0 V vs. RHE). At 100% RH, SPP-QP(c)-cell showed a characteristic peak around 0.2 V assignable to adsorption/desorption of the sulfonic acid groups in addition to the hydrogen adsorption/desorption. ECSA values calculated from the hydrogen adsorption peaks were 45.1 m² g⁻¹ for SPP-QP(c)-cell and 44.4 m² g⁻¹ for Nafion(c)-cell, respectively, suggesting that the ionomers in both cathode catalyst layers functioned similarly as proton sources for the catalysts. In contrast, the Pt oxidation peak shifted to higher potentials for the SPP-QP(c)-cell than for the Nafion(c)-cell. The Q_{Pt} value calculated from the Pt oxidation peak (0.7–0.85 V) was 29.1 C g⁻¹ for the SPP-QP(c)-cell, which was nearly exactly half than that (62.5 C g⁻¹) for the Nafion(c)-cell. These results indicate that SPP-QP was more strongly adsorbed on the Pt catalyst and thus suppressed the surface oxidation by excluding water in the double layer, although its bulk water absorbability was larger. The differences in the Q_{Pt} values became even larger at lower humidity (53% RH, Table 2), further supporting this idea, since, at lower humidity, the ionomer concentration became higher and there was less water available.

Fig. 3a shows I - V curves and ohmic resistance of the SPP-QP(c)-cell or Nafion(c)-cell at 80 °C and 100% RH. The ohmic resistances were comparable and constant for both cells (*ca.* 0.05 Ω cm²) and reasonable for the proton conductivity and thickness of the Nafion membrane, indicating that the interfacial contact between the membrane and the catalyst layers containing the Nafion and SPP-QP binders was excellent. The performance of the SPP-QP(c)-cell was lower than that of Nafion(c)-cell. From the IR-corrected I - V curves (Fig. S1, ESI[†]), the lower performance was due to the larger cathodic overpotential. The mass activity (MA) of the Pt catalyst at 0.85 V was 42.8 A g⁻¹ for the SPP-QP(c)-cell, which was *ca.* 21% that for the Nafion(c)-cell (201 A g⁻¹). The fuel cell performance became even lower at 53% RH (Fig. 3b), resulting in a lower MA, 18.8 A g⁻¹, for the SPP-QP(c)-cell compared to 147 A g⁻¹ for the Nafion(c)-cell. The results are in good accordance with the CV curves, as mentioned above, where the specific absorption of the SPP-QP binder on the Pt surface became stronger at lower humidity and at higher potential.

Initial performance of the cell using SPP-QP as the anode binder

Fig. 4 shows the anodic polarization of a cell using SPP-QP and Nafion as the anode binder (hereinafter referred to as the SPP-QP(a)-cell and Nafion(a)-cell, respectively) at 80 °C, 100% RH and 53% RH (note that cathode binder was Nafion for both cells).

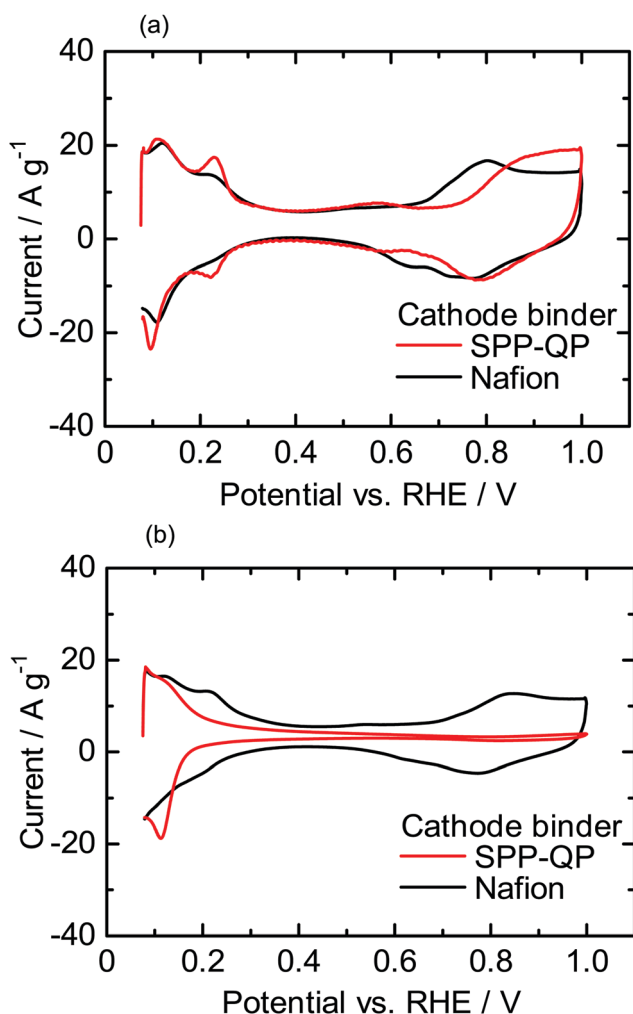


Fig. 2 Cyclic voltammograms for the cathodes of the SPP-QP(c)-cell and Nafion(c)-cell at 80 °C: (a) 100% RH and (b) 53% RH.



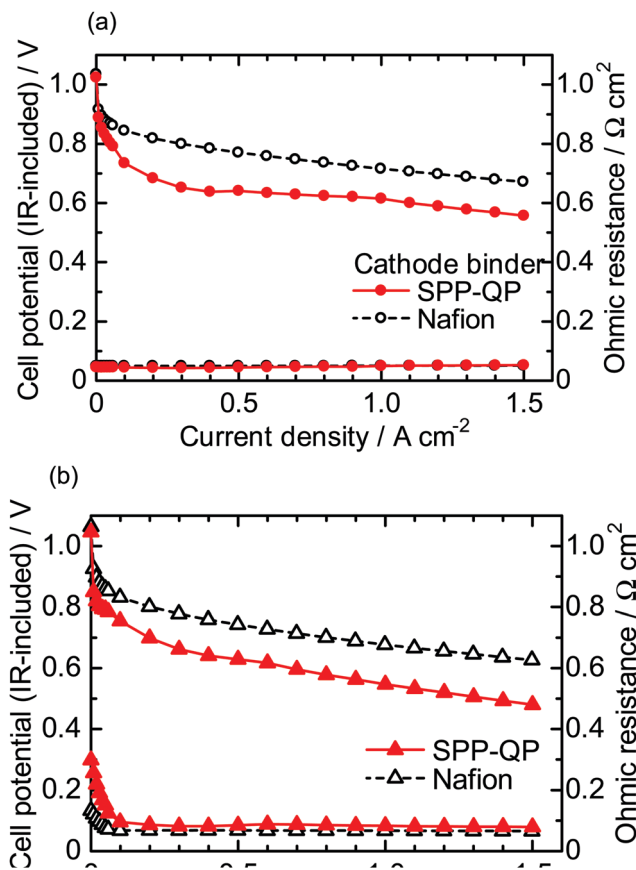


Fig. 3 I - V curves (IR-included) and ohmic resistances for the SPP-QP(c)-cell and Nafion(c)-cell at 80 °C: (a) 100% RH and (b) 53% RH.

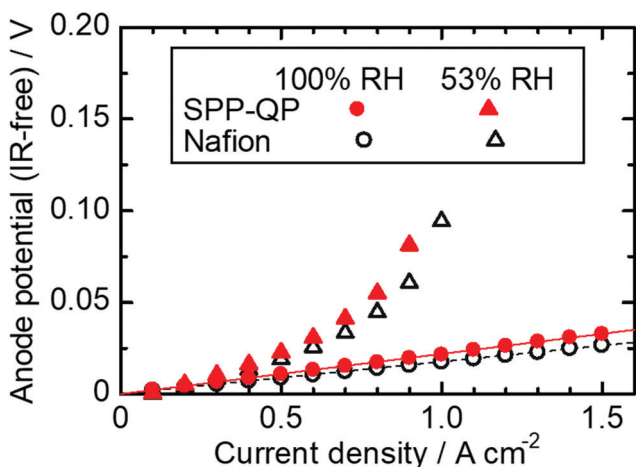


Fig. 4 Anodic polarization for the SPP-QP(a)-cell and Nafion(a)-cell at 80 °C.

At 100% RH, the anodic polarization was negligibly small at current densities up to 1.5 A cm^{-2} for both cells. At 53% RH, the polarization was somewhat larger, 50 mV for the Nafion(a)-cell and 81 mV for the SPP-QP(a)-cell at the current density of 0.9 A cm^{-2} due to the lower proton conductivity of the binders. The

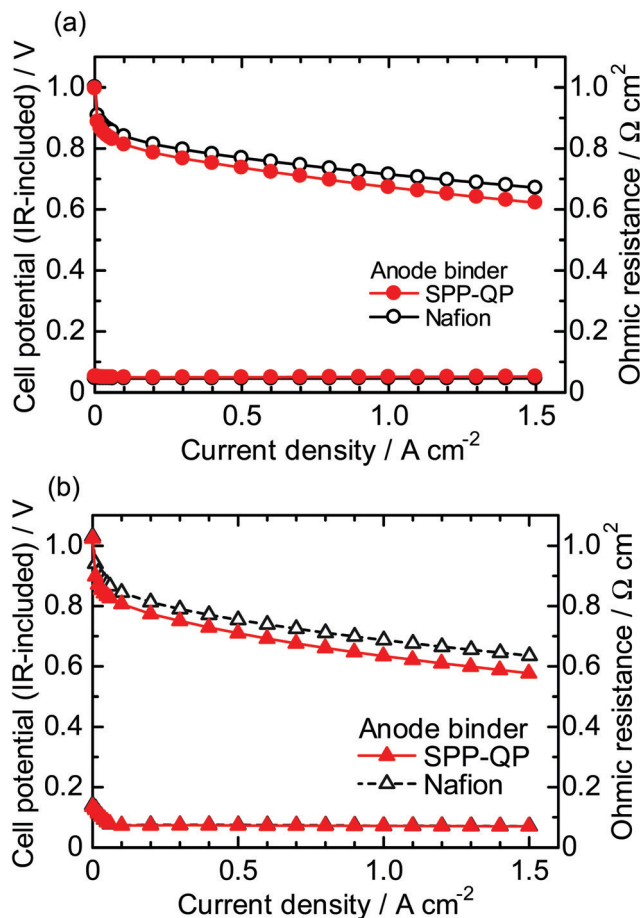


Fig. 5 Polarization curves (IR-included) and ohmic resistances for the SPP-QP(a)-cell and Nafion(a)-cell at 80 °C: (a) 100% RH and (b) 53% RH.

anodic polarizations were much smaller than the cathodic polarizations (Fig. 3) at 80 °C 100% RH and 53% RH, implying that SPP-QP as well as Nafion functioned well as the proton conductor for the HOR.

Fig. 5 shows I - V curves and ohmic resistances of the SPP-QP(a)-cell and Nafion(a)-cell at 80 °C (a) 100% RH, (b) 53% RH. The ohmic resistances were similar to those of the SPP-QP(c)-cell and Nafion(c)-cell in Fig. 3, indicating reasonable compatibility of the SPP-QP-based anode catalyst layer and Nafion membrane. The SPP-QP(a)-cell showed slightly lower cell performance than the Nafion(a)-cell (e.g., lower by 49 mV at 100% RH and 50 mV at 53% RH at a current density of 0.15 A cm^{-2}), where the cathode performance was responsible (Fig. S2, ESI†). In order to achieve complete removal of the residual solvent from the SPP-QP binder, a stringent cleaning process was applied to the SPP-QP(a) cell (see the Experimental section) which might have caused such differences in the cathode performance. Since the performance difference was rather minor, both cells were subjected to the durability test.

Accelerated durability test simulating fuel cell start-up

The durability of the cathodes of the SPP-QP(a)-cell and Nafion(a)-cell was examined *via* a gas exchange cycle test under



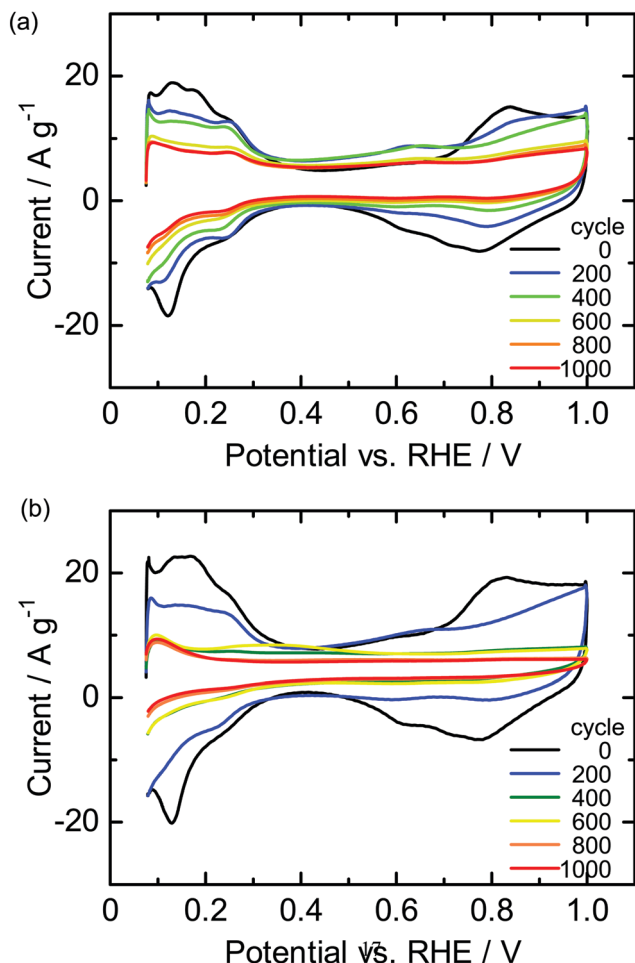


Fig. 6 CVs for the cathode of the (a) SPP-QP(a)-cell and (b) Nafion(a)-cell during the gas exchange cycle test.

accelerated conditions. Degradation of the cathode catalyst layers was monitored electrochemically *via* CVs obtained every 200 cycles. Fig. 6 shows the changes in the CVs during the gas exchange cycle test.²⁹ In both cells, the current density based on hydrogen adsorption/desorption (from 0.075 to 0.4 V), electric double layer (from 0.4 to 0.7 V), and surface Pt oxidation/reduction (from 0.7 to 1.0 V) decreased with increasing cycle number. The results show that the gas exchange cycles induced the reverse current reaction, causing deterioration of the carbon support and loss of the Pt in the cathode catalyst layers. In order to monitor this process, ECSA and its retention calculated therefrom are plotted as a function of cycle number in Fig. 7. The initial ECSA for the SPP-QP(a)-cell was $48.1 \text{ m}^2 \text{ g}^{-1}$, smaller than that for the Nafion(a)-cell ($56.9 \text{ m}^2 \text{ g}^{-1}$). Although the initial ECSA was lower, the decay was smaller for the SPP-QP(a)-cell, retaining a higher ECSA ($17.9 \text{ m}^2 \text{ g}^{-1}$, 37% retention) than that ($10.5 \text{ m}^2 \text{ g}^{-1}$, 19% retention) for the Nafion(a)-cell after 1000 cycles. The average decay of the ECSA was $0.03 \text{ m}^2 \text{ g}^{-1}$ cycle (or $0.45 \text{ m}^2 \text{ g}^{-1} \text{ h}$) and $0.05 \text{ m}^2 \text{ g}^{-1}$ cycle (or $0.70 \text{ m}^2 \text{ g}^{-1} \text{ h}$) for the SPP-QP(a)-cell and Nafion(a)-cell, respectively. The superior durability of the ECSA in the cathode of the SPP-QP(a)-cell was due to the stronger specific adsorption of SPP-QP

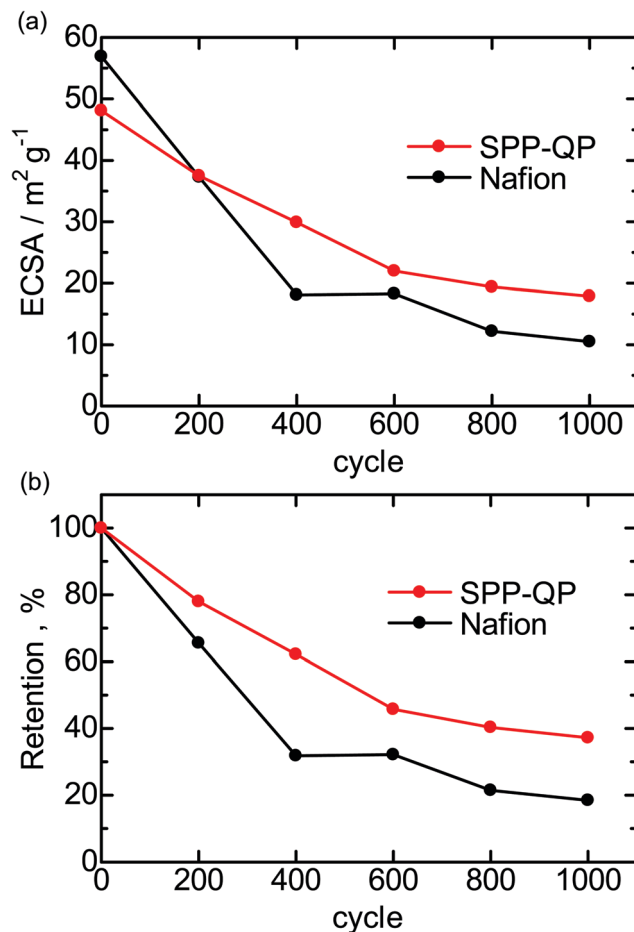


Fig. 7 (a) ECSA and (b) ECSA retention for the SPP-QP(a)-cell and Nafion(a)-cell during the gas exchange cycle test.

on the Pt catalyst at higher potentials, as discussed above. The ORR occurring at the anode (under start-up conditions) was suppressed, mitigating the reverse current reaction, increase of the cathode potential, and, accordingly, corrosion of the carbon support in the cathode catalyst layer.²⁰

After 1000 cycles, the *I*-*V* curves and ohmic resistance were re-evaluated and compared with the initial performance (Fig. 8). Both cells exhibited lower *I*-*V* performance and higher ohmic resistance after the test due to the degradation of the cathode catalyst layers. The performance loss was less significant for the SPP-QP(a)-cell than for the Nafion(a)-cell. For example, the cell voltages measured at a current density of 0.8 A cm^{-2} were 0.56 V (80% of the initial) for the SPP-QP(a)-cell and 0.34 V (47% of the initial) for the Nafion(a)-cell. These results are consistent with the ECSA losses mentioned above. Although the initial ohmic resistance was very similar (*ca.* $0.05 \Omega \text{ cm}^{-2}$) for both the SPP-QP(a)-cell and Nafion(a)-cell, the post-test ohmic resistance differed: $0.12 \Omega \text{ cm}^{-2}$ for the SPP-QP(a)-cell and $0.22 \Omega \text{ cm}^{-2}$ for the Nafion(a)-cell. The carbon support in the cathode catalyst layer would have deteriorated by the gas replacement durability test, and the influence was greater in the Nafion (a) cell.



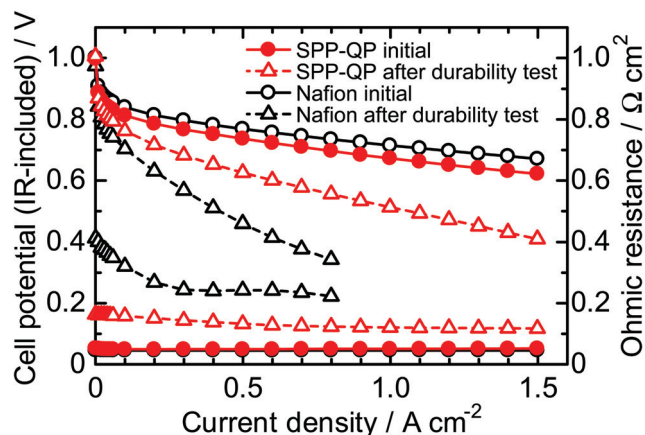


Fig. 8 IR-included polarization curve and Ohmic resistance of the SPP-QP(a)-cell and Nafion(a)-cell before and after the gas exchange cycle test at 80 °C and 100% RH.

Post-test analyses of the cathode catalyst layers

Fig. 9 compares cross-sectional scanning ion microscopic (SIM) images of the cathode catalyst layers at three different locations of the cells before and after the 1000-cycle gas exchange test (SIM was used rather than SEM to obtain more distinct contrast in the images). The thickness of the catalyst layers was initially *ca.* 17 μm . After the test, the thickness was smaller than 6 μm at the inlet, center, and outlet for the Nafion(a)-cell. These results were indicative of the significant degradation of the cathode catalyst layers associated with the carbon corrosion. In contrast, the SPP-QP(a) cell retained its original thickness, specifically at the inlet (17 μm). However, even for the SPP-QP(a)-cell, the catalyst layer became thinner at the center and the outlet, probably because of the longer time period during which the mixed gas remained downstream.

Conclusions

Our in-house sulfonated polyphenylene ionomer (SPP-QP) was evaluated as a catalyst layer binder for the anode and the cathode, in separate measurements. From the CVs, the cell using SPP-QP as the cathode binder (SPP-QP(c)-cell) exhibited an ECSA value comparable with that for the cell using Nafion as the cathode binder (Nafion(c)-cell) at high (100% RH) and low (53% RH) humidity, indicating that SPP-QP functioned well as a proton conductor in the catalyst layer. However, the Pt oxidation peak for the SPP-QP(c)-cell shifted to higher potentials, and the Q_{Pt} value was half that of the Nafion(c)-cell because of the strong specific adsorption of the SPP-QP ionomer on the Pt catalyst, particularly at low humidity. Therefore, the SPP-QP(c)-cell exhibited lower fuel cell performance than that for the Nafion(c)-cell. At 53% RH, the difference in mass activity (MA) of the cathode catalyst was *ca.* 7.8-fold. As the anode binder, SPP-QP functioned well in a fuel cell (SPP-QP(a)-cell), with negligibly small anodic overpotential and only slightly inferior *I-V* performance compared to the Nafion(a)-cell, even at 53% RH. The specific adsorption of SPP-QP on Pt at higher potentials contributed much to improving the durability of the cathode catalyst layer during the start-up (or gas exchange) durability test. The cathode ECSA values remaining for the SPP-QP(a)-cell and Nafion(a)-cell after 1000 cycles were 17.9 $\text{m}^2 \text{g}^{-1}$ (37% remaining) and 10.5 $\text{m}^2 \text{g}^{-1}$ (19% remaining). In other words, the reverse current reaction was suppressed under start-up conditions with the SPP-QP as the anode binder. The post-test *I-V* performance was such that the cell voltages measured at a current density of 0.8 A cm^{-2} were 0.56 V (80% remaining) for the SPP-QP(a)-cell and 0.34 V (47% remaining) for the Nafion(a)-cell. The ohmic resistance after the test was lower for the SPP-QP(a)-cell (0.12 Ωcm^{-2}) than for the Nafion(a)-cell (0.22 Ωcm^{-2}). In the Nafion(a)-cell, the

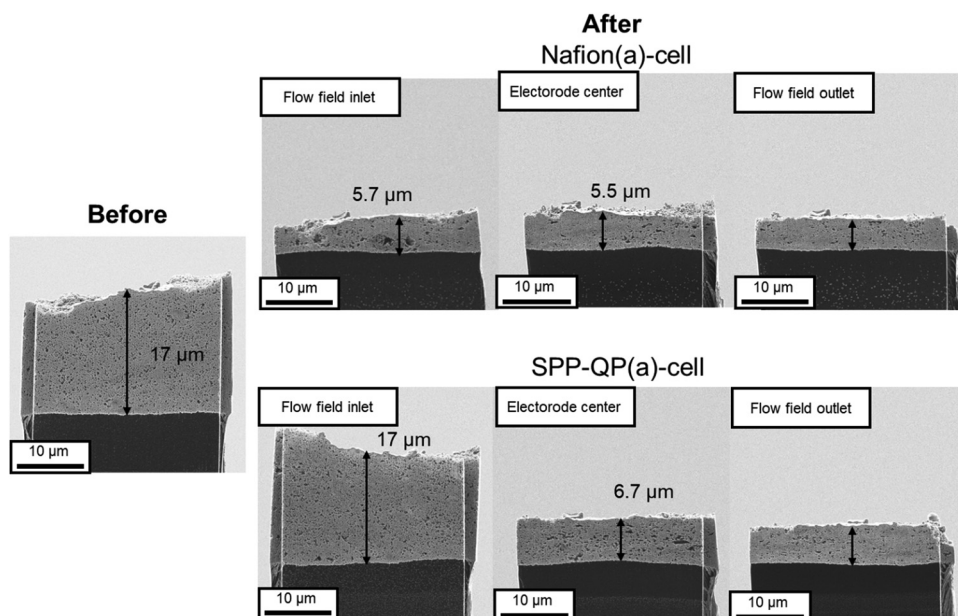


Fig. 9 SIM images of the cathode catalyst layer of the SPP-QP(a)-cell and Nafion(a)-cell before and after the gas exchange cycle test.



interfacial compatibility between the Nafion membrane and the cathode catalyst layer deteriorated due to the degradation of the cathode catalyst layer. In the Nafion(a)-cell, the cathode catalyst layer became thinner than 6 μm in all areas (initial thickness 17 μm). In contrast, the SPP-QP(a)-cell retained the initial thickness of the cathode catalyst layer, specifically at the inlet (16 μm). We have thus, demonstrated that the use of aromatic ionomer as the anode binder, which exhibited strong specific adsorption on Pt, was effective in mitigating the cathode carbon corrosion during a gas exchange test simulating start-up conditions, with little or no impact on the *I-V* performance.

Author contributions

Toshiki Tanaka: investigation, writing. Makoto Uchida: conceptualization, methodology, reviewing and editing, funding acquisition. Kenji Miyatake: supervision, writing, reviewing and editing, funding acquisition, and project administration.

Conflicts of interest

There are no conflicts to declare.

Acknowledgements

We thank Dr Hiroyuki Uchida (Emeritus Professor at University of Yamanashi) for fruitful discussion. This work was partly supported by the New Energy and Industrial Technology Development Organization (NEDO), the Ministry of Education, Culture, Sports, Science and Technology (MEXT), Japan, through Grants-in-Aid for Scientific Research (18H05515), Japan Science and Technology (JST) through SICORP (JPMJSC18H8), JKA promotion funds from AUTORACE, and by the Thermal and Electric Energy Technology Foundation.

Notes and references

- 1 L. Carrette, K. A. Friedrich and U. Stimming, *Fuel Cells*, 2001, **1**, 5–39.
- 2 J. M. Thomas, P. P. Edwards, P. J. Dobson and G. P. Owen, *J. Energy Chem.*, 2020, **51**, 405–415.
- 3 H. A. Gasteiger, S. S. Kocha, B. Sompalli and F. T. Wagner, *Appl. Catal., B*, 2005, **56**, 9–35.
- 4 M. Watanabe, D. A. Tryk, M. Wakisaka, H. Yano and H. Uchida, *Electrochim. Acta*, 2012, **84**, 187–201.
- 5 L. Osmieri, J. Park, D. A. Cullen, P. Zelenay, D. J. Myers and K. C. Neyerlin, *Curr. Opin. Electrochem.*, 2021, **25**, 100627.
- 6 H. Zhang and P. K. Shen, *Chem. Rev.*, 2012, **112**, 2780–2832.
- 7 M. P. Rodgers, L. J. Bonville, H. R. Kunz, D. K. Slattey and J. M. Fenton, *Chem. Rev.*, 2012, **112**, 6075–6103.
- 8 W. Liu, T. Suzuki, H. Mao and T. Schmiedel, *J. Electrochem. Soc.*, 2013, **50**, 51–64.
- 9 Y. Prykhodko, K. Fatyeyeva, L. Hespel and S. Marais, *Chem. Eng. J.*, 2021, **409**, 127329.
- 10 M. Adamski, N. Peressin and S. Holdcroft, *Mater. Adv.*, 2021, **2**, 4966–5005.
- 11 T. Oshima, M. Yoshizawa-Fujita, Y. Takeoka and M. Rikukawa, *ACS Omega*, 2016, **1**, 939–942.
- 12 J. Jiang, X. Zhu, H. Qian, J. Xu, Z. Yue, Z. Zou and H. Yang, *Sustainable Energy Fuels*, 2019, **3**, 2426–2434.
- 13 R. Mukherjee, A. K. Mandal and S. Banerjee, *e-Polym.*, 2020, **20**, 430–442.
- 14 A. G. Kumar, A. Singh, H. Komber, B. Voit, B. R. Tiwari, M. T. Noori, M. M. Ghangrekar and S. Banerjee, *ACS Appl. Mater. Interfaces*, 2018, **10**, 14803–14817.
- 15 T. Yoda, T. Shimura, B. Bae, K. Miyatake, M. Uchida, H. Uchida and M. Watanabe, *Electrochim. Acta*, 2009, **54**, 4328–4333.
- 16 T. Yoda, T. Shimura, B. Bae, K. Miyatake, M. Uchida, H. Uchida and M. Watanabe, *Electrochim. Acta*, 2010, **55**, 3464–3470.
- 17 T. Omata, M. Uchida, H. Uchida, M. Watanabe and K. Miyatake, *Phys. Chem. Chem. Phys.*, 2012, **14**, 16713–16718.
- 18 T. Omata, M. Tanaka, K. Miyatake, M. Uchida, H. Uchida and M. Watanabe, *ACS Appl. Mater. Interfaces*, 2012, **4**, 730–737.
- 19 H. Nguyen, F. Lombeck, C. Schwarz, P. A. Heizmann, M. Adamski, H. F. Lee, B. Britton, S. Holdcroft, S. Vierrath and M. Breitwieser, *Sustainable Energy Fuels*, 2021, **5**, 3687–3699.
- 20 J. E. Chae, S. J. Yoo, J. Y. Kim, J. H. Jang, S. Y. Lee, K. H. Song and H. Kim, *Int. J. Hydrogen Energy*, 2020, **45**, 32856–32864.
- 21 X. Pu, Y. Duan, J. Li, C. Ru and C. Zhao, *J. Power Sources*, 2021, **493**, 229671.
- 22 E. Balogun, M. Adamski and S. Holdcroft, *J. Electrochem. Soc.*, 2020, **167**, 084502.
- 23 J. Miyake, R. Taki, T. Mochizuki, R. Shimizu, R. Akiyama, M. Uchida and K. Miyatake, *Sci. Adv.*, 2017, **3**, eaao0476.
- 24 C. A. Reiser, L. Bregoli, T. W. Patterson, J. S. Yi, J. Deliang, M. L. Perry and T. D. Jarvi, *Electrochem. Solid-State Lett.*, 2005, **8**, A273.
- 25 L. Dubau, L. Castanheira, F. Maillard, M. Chatenet, O. Lottin, G. Maranzana, J. Dillet, A. Lamibrac, J. Perrin, E. Moukheiber, A. Elkaddouri, G. D. Moor, C. Bas, L. Flandin and N. Caque, *Wiley Interdiscip. Rev.: Energy Environ.*, 2014, **3**, 540–560.
- 26 H. Shintani, Y. Kojima, K. Kakinuma, M. Watanabe and M. Uchida, *J. Power Sources*, 2015, **294**, 292–298.
- 27 Y. Yamashita, S. Itami, J. Takano, K. Kakinuma, H. Uchida, M. Watanabe, A. Iiyama and M. Uchida, *J. Electrochem. Soc.*, 2017, **164**, F181–F187.
- 28 Fuel Cell Commercialization Conference of Japan, http://fccj.jp/pdf/23_01_kt.pdf.
- 29 Y. Yamashita, S. Itami, J. Takano, M. Kodama, K. Kakinuma, M. Hara, M. Watanabe and M. Uchida, *J. Electrochem. Soc.*, 2016, **163**, F644–F650.

