



Cite this: *Chem. Soc. Rev.*, 2020, **49**, 3262

Received 7th February 2020

DOI: 10.1039/d0cs00102c

rsc.li/chem-soc-rev

Peptidomimetic toolbox for drug discovery

Elena Lenci  and Andrea Trabocchi  *

The art of transforming peptides into drug leads is still a dynamic and fertile field in medicinal chemistry and drug discovery. Peptidomimetics can respond to peptide limitations by displaying higher metabolic stability, good bioavailability and enhanced receptor affinity and selectivity. Various synthetic strategies have been developed over the years in order to modulate the conformational flexibility and the peptide character of peptidomimetic compounds. This tutorial review aims to outline useful tools towards peptidomimetic design, spanning from local modifications, global restrictions and the use of secondary structure mimetics. Selected successful examples of each approach are presented to document the relevance of peptidomimetics in drug discovery.

Key learning points

1. Advantages of peptidomimetics over peptides.
2. Definition and classification of peptidomimetics.
3. Synthetic strategies and molecules for local modifications, secondary structure mimetics, global restrictions.
4. Applications of peptidomimetics in drug discovery.

1. Introduction

Peptides influence many important physiological mechanisms and control nearly all vital functions in humans, including immune defence, digestion, metabolism, reproduction, respiration and sensitivity to pain.¹ Peptides show good efficacy and tolerability, as well as favourable profile in the development stages, including the knowledge of a predictable metabolism, short time to market and low attrition rates. Thanks to advances in structural optimization, formulation, and production, an increasing number of peptides are entering clinical trials and being approved as drugs.^{1,2} However, these molecules still suffer of several drawbacks, including (Fig. 1, left):

- limited stability towards proteolysis, resulting in a half time in the order of minutes in the gastrointestinal tract and in serum;
- poor absorption and transport properties, due to relatively high molecular mass and lack of specific transport systems, often resulting in a rapid excretion through the liver and kidneys;
- interaction with multiple targets, resulting in poor selectivity and undesired side effects, due to the intrinsic flexibility addressed by N-C_α and C_α-CO rotational bonds of each amino acid;

- interaction with binding sites of antibodies, thus inducing antigenicity and an immune response in a competent host in an unpredictable way.³

Peptidomimetics have been conceived to address these limitations, as they are developed to display metabolic stability, good bioavailability, high receptor affinity and selectivity. The structure of the lead peptide is optimized by introducing functional modifications able to address the intrinsic disadvantages of peptides, while maintaining the structural features responsible for the biological activity (Fig. 1, right).⁴

An elegant example of a peptidomimetic compound is given by the somatostatin analogue developed by Hirschmann and Nicolaou, in which the β-D-glucose scaffold presents the four side chains responsible for the interaction in the same orientation as found in the β-turn structure of the parent somatostatin peptide (Fig. 1, top).⁵ Similarly, the thyrotropin-releasing hormone (TRH) mimetic developed by Olson contains a cyclohexane scaffold that replaces the peptide backbone, while presenting the three pharmacophoric groups in the correct orientation (Fig. 1, down).⁶ Although the peptidomimetic concept was introduced in the Eighties,⁷ the art of transforming peptides in new drugs is still a powerful and well-established tool in medicinal chemistry and drug discovery. In fact, the replacement of the amide bond with isosteres can reduce the rate of degradation by peptidases, and the overall pharmacological properties of the new compound can be optimized, resulting in better transport properties and increased stability

Department of Chemistry "Ugo Schiff", University of Florence, Via della Lastruccia 13, 50019 Sesto Fiorentino, Florence, Italy. E-mail: andrea.trabocchi@unifi.it

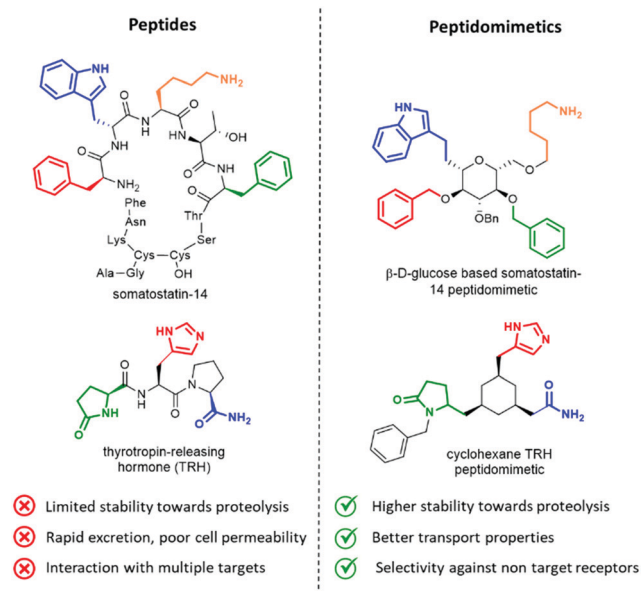


Fig. 1 Advantages of peptidomimetics over peptides.

against secretion.⁸ Besides, conformationally restricted structures that are able to mimic as much as possible the receptor-bound peptide arrangement can minimize the binding to non-target receptors, thus increasing the selectivity of the therapeutic agent.

Several peptidomimetic compounds have been already approved as drugs or are in late stage clinical trials, with application in the treatment of different pathologies, spanning from infectious diseases to cancer and rare diseases (Fig. 2).

The field of peptidomimetics has changed largely over the last three decades. Starting from local modifications of bio-active peptides, peptidomimetics are now being developed using *ad hoc* rational design, with the purpose of positioning and projecting pharmacophoric elements and interacting

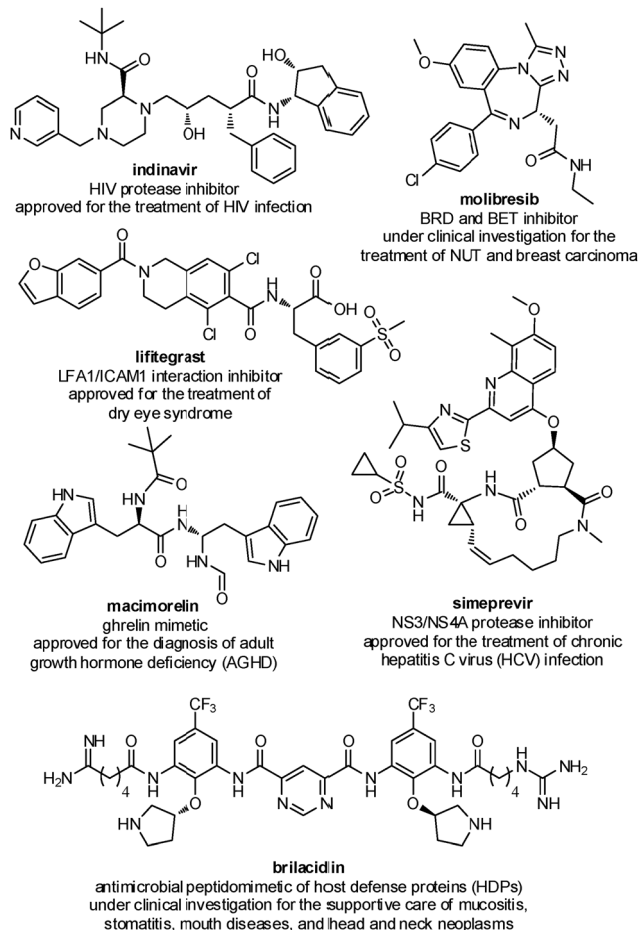


Fig. 2 Representative examples of peptidomimetics compounds in late stage clinical trials or already approved as drugs.

groups in the right position. The synthetic strategies behind their development have changed significantly, too, spanning



Elena Lenci

Elena Lenci received the Doctor Europaeus PhD in Chemical Sciences in 2017 from the University of Florence, after spending a research period at the University of Oxford. She is currently a postdoctoral researcher at the Department of Chemistry, University of Florence, working with Prof. Trabocchi to develop novel amino acid- and sugar-derived scaffolds for medicinal chemistry. In 2015 she was awarded the Reaxys – Italian Chemical Society Young

Researcher Award, and in 2017 she received the International Award for Young Chemists “NATCHEMDRUGS”. She recently edited a book on Small Molecule Drug Discovery (Elsevier, 2019).



Andrea Trabocchi

Researcher Award, and in 2017 she received the International Award for Young Chemists “NATCHEMDRUGS”. She recently edited a book on Small Molecule Drug Discovery (Elsevier, 2019).

Andrea Trabocchi is Associate Professor of Organic Chemistry at the University of Florence. He received training on peptide chemistry at Imperial College London, and obtained the PhD in Chemical Sciences from the University of Florence under the supervision of Prof. Guarna. After post-doctoral research, he was appointed assistant professor (2007), and associate professor (2017) in the same University. He authored a book on Peptidomimetics (Wiley, 2014) and edited two books on Diversity-Oriented Synthesis (Wiley, 2013) and Small Molecule Drug Discovery (Elsevier, 2019). Current research interests include peptidomimetic chemistry, diversity-oriented synthesis, chemoinformatics and medicinal chemistry of cancer and Alzheimer's disease.

from the simple replacement of the peptide backbone, to extensive modifications of the entire structure. This review summarizes the main chemical approaches for peptidomimetic design, organized by the extent of modifications on the parent peptide, particularly delivering useful synthetic tools, with some reference to successful examples for each approach herein considered. It starts with describing local modifications, focusing on peptide bond surrogates and side chain isosteres, tethered α -amino acids and dipeptide isosteres. Then, principal secondary structure mimetics of helix, β -sheet, β -turn and β -hairpin are covered. Finally, global restriction approaches are discussed, such as the development of stapled, cross-linked and macrocyclic peptides.

2. Definition and classification

Peptidomimetics have been defined as '*compounds whose essential elements (pharmacophore) mimic a natural peptide or protein in 3D space and which retain the ability to interact with the biological target and produce the same biological effect*'.⁸

Together with the progress made over the years, the classification of peptidomimetic compounds has evolved, from a historical arrangement into three types based on structural and functional characteristics, to a broader classification that includes new approaches based on high molecular weight foldamers and peptoids. The old classification categorizes peptidomimetics on the basis of their similarity with the native substrate:⁹

- Type I mimetics, or structural mimetics, show a strict analogy with the native substrate, as they carry all the functionalities in the same spatial orientation.
- Type II mimetics, or functional mimetics, do not show apparent structural analogies with the native substrate, but are able to mimic its function by interacting similarly with the target receptor or enzyme.
- Type III mimetics, or functional-structural mimetics, possess a scaffold significantly different from the native substrate, while displaying the interacting elements in the same spatial orientation.

The new classification, recently proposed by Grossmann and coworkers,¹⁰ classifies peptidomimetics on the basis of their degree of peptide character:

- Class A mimetics are the most similar to the parent peptide, as only a limited number of local modifications are introduced in the structure to stabilize the conformation and to limit the proteolysis degradation rate. This class includes former type I structural mimetics, as the backbone and side chains of these mimetics show a close alignment with the topography of the native peptide. This is the case of pentagastrin (Peptavlon), an approved drug used as a diagnostic tool for the evaluation of gastric acid secretory function, obtained by the local modification of the bioactive region of endogenous gastrin.
- Class B mimetics still possess large peptide-like character, but contain more important modifications in their structures, both in the backbone and side chains. They may include various non-natural amino acids, isolated small-molecule building blocks and backbone mimetics. This class parallels to classical

type II peptidomimetics, as the analogy with the parent peptide is found on the position of the interacting elements, but includes also foldamers and peptoids, where the backbone is entirely modified, while retaining the side chains in the same topological order as found in the parent peptide.

- Class C mimetics are characterized by an increasing small-molecule character, as they have a non-peptide unnatural framework that completely replaces the backbone. The central scaffold projects the interacting elements in the same topological manner as found in the bioactive conformation of the parent peptide, but the peptide backbone is globally altered. They are closely related to traditional type III peptidomimetics, as in the case of somatostatin and TRH analogues (Fig. 1).

- Class D mimetics are the least similar to the parent peptide. These molecules mimic the mode of action of a bioactive peptide without a direct link to its side chain functionalities. They are generated through a hit-to-lead process starting from class C peptidomimetics, or they result from compound library screenings. This class parallels either traditional type II or type III peptidomimetics, depending on the degree of abstraction from the parent peptide.

3. Synthetic toolbox towards peptidomimetic design

There are several conceptually different approaches for the generation of peptidomimetics. The selection of the design strategy depends on what is known about the target protein in terms of structure, sequence, function, and the protein-binding site characteristics. When the sequence of a bioactive peptide is known, a hierarchical approach can be applied to develop the corresponding peptidomimetic (Fig. 3a).¹¹

At first, peptide scanning, consisting of synthesizing and testing an array of short overlapping peptides, is useful to reveal the minimal peptide sequence required for the biological interaction. Similarly, alanine or D-amino acid scanning consists of the systematic synthesis and biological evaluation of an array of peptides having only one amino acid of the parent peptide being replaced by alanine or a D-amino acid, to identify key pharmacophoric amino acids responsible for bioactivity.

Then, different synthetic approaches (classified in this review as local modifications, use of secondary structure mimetics and global restrictions) allow for the optimization of hit peptidomimetics, thus giving access to orally available drug candidates. One historical example is given by the development of Angiotensin Converting Enzyme (ACE) inhibitors, starting from the structure of teprotide, a natural bioactive peptide isolated from a Brazilian viper venom (Fig. 3b). By using peptide scanning technique, the pharmacophoric groups responsible for the activity were found to be the two proline residues at the C-terminus and the carbonyl group next to the second proline, which was found able to coordinate the catalytic Zn^{2+} cation. Thus, the drug Captopril was developed in the early Eighties as one of the most active ACE inhibitors. Advances in the development of ACE inhibitors to reduce side effects of Captopril were obtained by

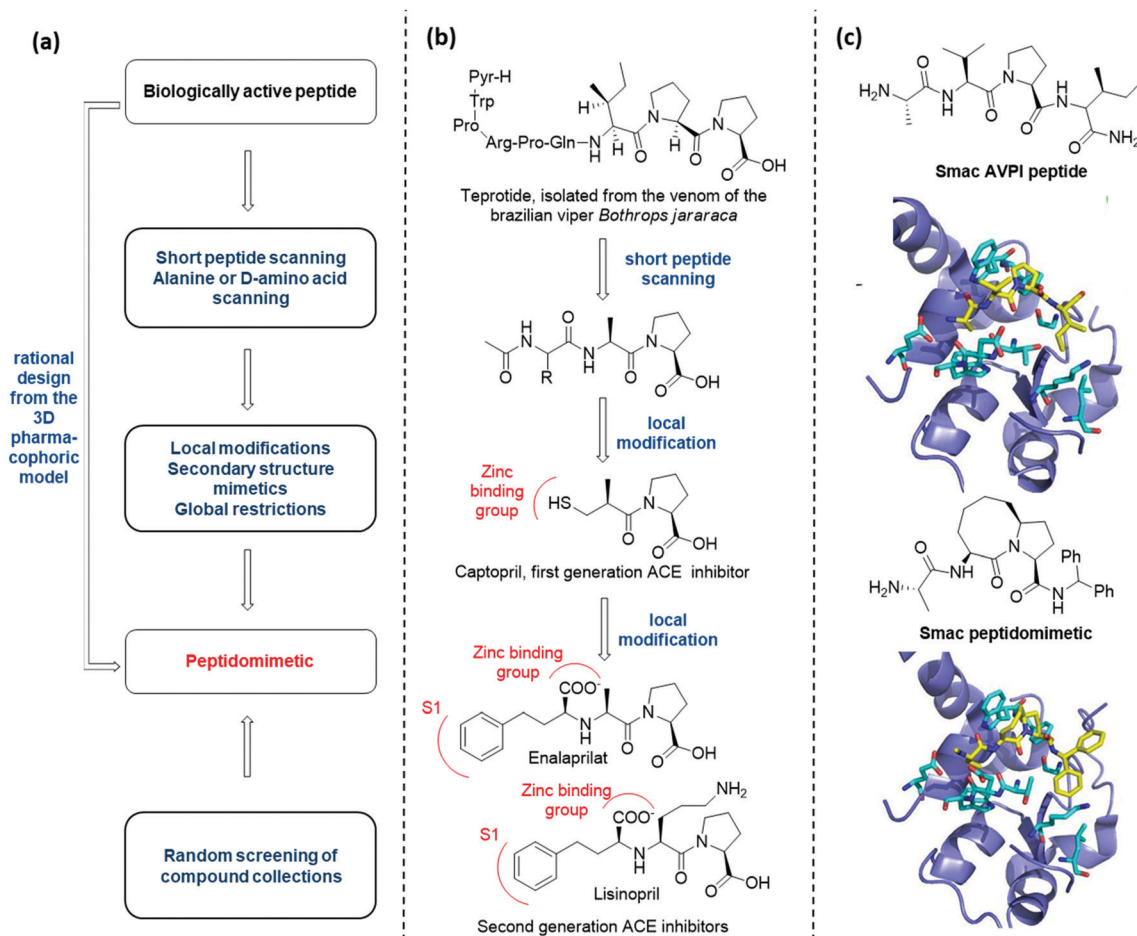


Fig. 3 (a) Hierarchical approach to peptidomimetic design; (b) history of the development of peptidomimetic ACE inhibitors; (c) Smac peptidomimetic inhibitor of the X-linked inhibitor of apoptosis protein (XIAP) developed by rational design.

replacing the thiol with a carboxylate group, and balancing the affinity drop by introducing hydrophobic groups addressing the S1 subsite of the catalytic cleft, resulting in the development of Enalaprilat and Lisinopril.

The knowledge of the three-dimensional pharmacophoric model may allow to skip these steps, by rationally designing peptidomimetic compounds on the basis of the interacting elements responsible for the molecular recognition. An example of this approach is given by the development of Smac peptidomimetic inhibitors of the X-linked Inhibitor of Apoptosis Protein (XIAP) (Fig. 3c).¹² Such compounds were developed on the basis of the crystal structure of Smac in complex with XIAP BIR3 domain, resulting in a series of conformationally constrained bicyclic Smac mimetics.

On the other hand, when the structure of the bioactive peptide or the pharmacophoric model is not known, the only possible approach is the random screening of large peptidomimetic libraries (Fig. 3a).

3.1 Local modifications

Modifying a peptide through minimal variations at specific positions is the most conservative approach and successful strategy for the design of first-generation peptidomimetics

and protease inhibitors. This procedure consists of replacing specific chemical moieties by isosteres, that comprise atoms, ions or molecular fragments showing approximately the same electronic distribution and similar physical properties. Generally, local modifications are restricted to single amino acids, and are grouped into backbone, side chain and dipeptide isostere replacements. A wide range of peptide bond isosteres have been reported over the years, including the replacement of the amide bond with thioamide, alkene, triazole ring, or chemical groups able to mimic the tetrahedral transition state resulting from the cleavage of the scissile peptide bond by proteolytic enzymes, such as the hydroxyethylene moiety. Also, several strategies for the local modification of amino acid side chains have been developed. Apart from the simple C-alkylation to achieve quaternary amino acids, and the homologation with β - and γ -amino acids, the array of locally modified amino acids for developing peptidomimetics includes cyclic compounds with added conformational restriction. Finally, the simultaneous modification of two contiguous amino acids with the use of dipeptide isosteres, including δ -amino acids, is another well-established approach for the development of peptidomimetics with improved peptide stability and enhanced biological activity.

3.1.1 Peptide bond isosteres. The replacement of the amide bonds not directly involved in the biological interaction with the target is one of the most widely used synthetic strategies to improve the proteolytic stability of peptides *in vivo*. However, these modifications can affect the chemical features of the peptide bond, specifically related to the conformational profile and consequently the binding affinity with the target protein, so that these procedures should be used very carefully. Many different amide bond isosteres have been proposed over the years (Fig. 4a).¹³ For example, the thioamide group is obtained by replacing the carbonyl oxygen with a sulfur atom. This group exhibits an increased value of the dipole moment and of the rotational barrier around the peptide bond, and it has been used since the Eighties for the development of protease inhibitors, including proline-specific peptidases, leucine aminopeptidase (LAP), and the HIV-1 protease. Alternatively, the carbonyl carbon atom can be replaced by heteroatoms, like sulfur in the case of the sulfonamide, or phosphorous in the case of phosphonamide. Such chemical moieties introduce a significant twist in the main chain, due to the dihedral angle around 90° adopted by these groups to delocalize π electrons. The substitution of the carbonyl group with an oxetane ring is a powerful approach, especially for favouring peptide macrocyclization, as the introduction of this heterocycle is able to bring the C- and N-termini into close proximity, in a much more efficient way as compared to other local modifications.¹⁴ Other amide bond isosteres are olefins, as they preserve the planarity of the peptide bond and the associated *cis/trans* isomerism, while possessing a small dipole moment and the inability to participate in hydrogen-bonding interactions. The alpha carbon can be replaced with a nitrogen atom, by generating the so-called azapeptides, that are easily produced through the acylation of hydrazines or by incorporating aza-amino acid esters into a peptide chain. A peptide bond isostere that has recently gained popularity in chemical biology is the triazole ring. Its attractiveness is not only related to its peculiar physicochemical properties as an amide bond isostere, but also to the facile synthesis

through the Cu-catalyzed azide-alkyne cycloaddition (CuAAC), the most iconic ‘click chemistry’ reaction.¹⁵ In fact, azide and alkyne functionalities are easily obtained and coupled together through this copper-catalyzed reaction using mild reaction conditions (room temperature, aqueous media) with complete regioselectivity towards the 1,4 disubstituted adduct and high tolerance of other functional groups. Such features allow for the application of the triazole linkage in bioconjugate chemistry replacing peptide and phosphodiester bonds. The isosteric features of triazole are several, as this heterocycle is planar, and displays similar electronic content, dipole moment and hydrogen-bonding profile as the nitrogen and oxygen atoms of the amide bond. The triazole ring can work intrinsically as a peptidomimetic scaffold, by enhancing the overall chemical stability in biological systems.

A special case among amide bond isosteres is offered by the replacement of the amide bond with fragments containing a hydroxyl group. These moieties have been conceived as transition-state surrogates, since they are stable and non hydrolysable functional groups able to mimic the tetrahedral intermediate that occurs when a peptide bond is cleaved (Fig. 4b). The hydroxyethylamine moiety is a homologous function maintaining the hydrogen-bonding features of the transition-state intermediate, and it is found in several FDA-approved HIV protease inhibitors.¹⁶ Other transition state analogues are the hydroxyethylene moiety, where the nitrogen is replaced with a CH₂ group, as found in the synthetic renin inhibitor aliskiren for the treatment of hypertension, and β -hydroxy- γ -amino acids, also called statines, that are found in the natural aspartic protease inhibitor pepstatin. Other examples of transition state analogues that have been successfully used to design renin and HIV protease inhibitors include phosphinates, α -hydroxy- β -amino acids, trifluoroethylamines, methyleneamino moieties and ketomethylenes.

3.1.2 Side chain isosteres. The modification of amino acid side chains is a complimentary approach for local variations of the parent peptide. From the simple introduction of either D- or β - and γ -amino acids, peptidomimetic chemistry has evolved by introducing conformationally constrained amino acids. In this section, selected examples of major significance for all these approaches are reported with some related applications.

An important modification in the context of side chain isosteres is the possibility of using non-natural amino acids with appendages that are created to enhance the binding affinity of the interacting elements with hot spots on the biological target surface. In this category, much efforts have been directed for the substitution of aromatic side chains with heterocycles or larger aromatic groups to increase the size and hydrophobicity for van der Waals and π -stacking interactions (Fig. 5a).¹⁷ Also, several surrogates of basic and acidic side chains have been developed to reduce or enhance their basicity/acidity and to modulate their strong ionic interactions. For example, the guanidino group of arginine is a highly basic group present in several synthetic and natural inhibitors of trypsin-like serine proteases and integrin receptors. Despite its importance in biological interactions, this group is often responsible of low selectivity and poor oral availability of the resulting compound. For these reasons, several guanidine isosteres have been conceived to modulate the basicity of this group,

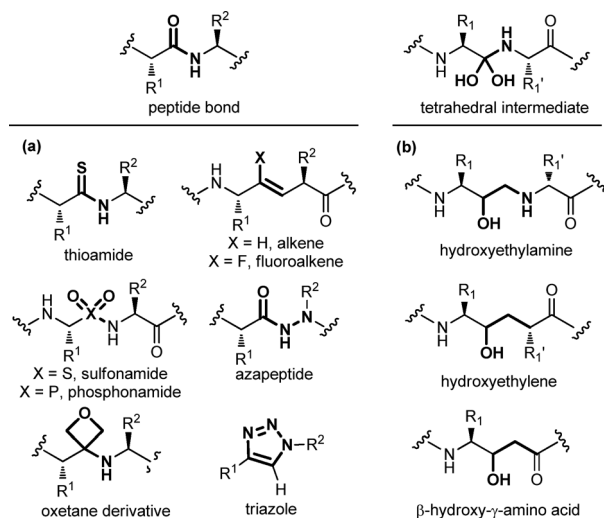


Fig. 4 Panel of (a) peptide bond isosteres, and (b) transition state analogues used in the design of peptidomimetic compounds.

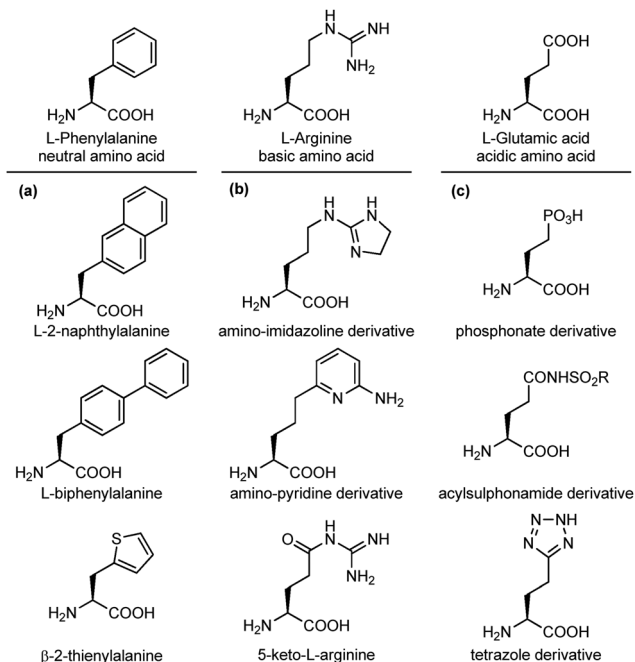


Fig. 5 Side chain isosteres of (a) neutral, (b) basic or (c) acidic amino acids.

including amino-imidazoline or amino-pyridine heterocycles, and the replacement of the adjacent CH_2 with a carbonyl moiety, such as in the keto-arginine (Fig. 5b). Similarly, several isosteres of the carboxylic group of aspartic and glutamic acids have been proposed to modulate the acidity and the lipophilicity, as for integrin and angiotensin II receptor agonists.¹⁸ The carboxylic acid group can be replaced with phosphonate (more acidic), acylsulphonamides (less acidic), hydroxamic acid (useful to chelate metals) or the tetrazole ring, as this heterocycle shows similar planar structure and molecular electrostatic potential and hydrogen-bonding profile (Fig. 5c).

Another important peptidomimetic tool for introducing local modifications around side chains is to adjust the flexibility on all the rotatable bonds present in the amino acid unit to modulate the conformational profile of the overall peptide. These are called 'tethering' strategies, and over the years several approaches addressing the dihedral torsion angles of the amino acids have been proposed (ϕ , ψ , χ , Fig. 6). The simplest method consists of alkylating the C_α -atoms to achieve quaternary carbon atoms (Fig. 6a). α -Substituted amino acids have a reduced rotational freedom around $\text{N}-\text{C}_\alpha$ and $\text{C}_\alpha-\text{CO}$ bonds, so that their insertion in a peptide contributes to reducing the rotational freedom around backbone bonds of about 90%. α -Me-alanine is the most widely studied α -alkylated amino acid, which is able to restrict the ϕ , ψ dihedral angles present in α or 3_{10} helices.

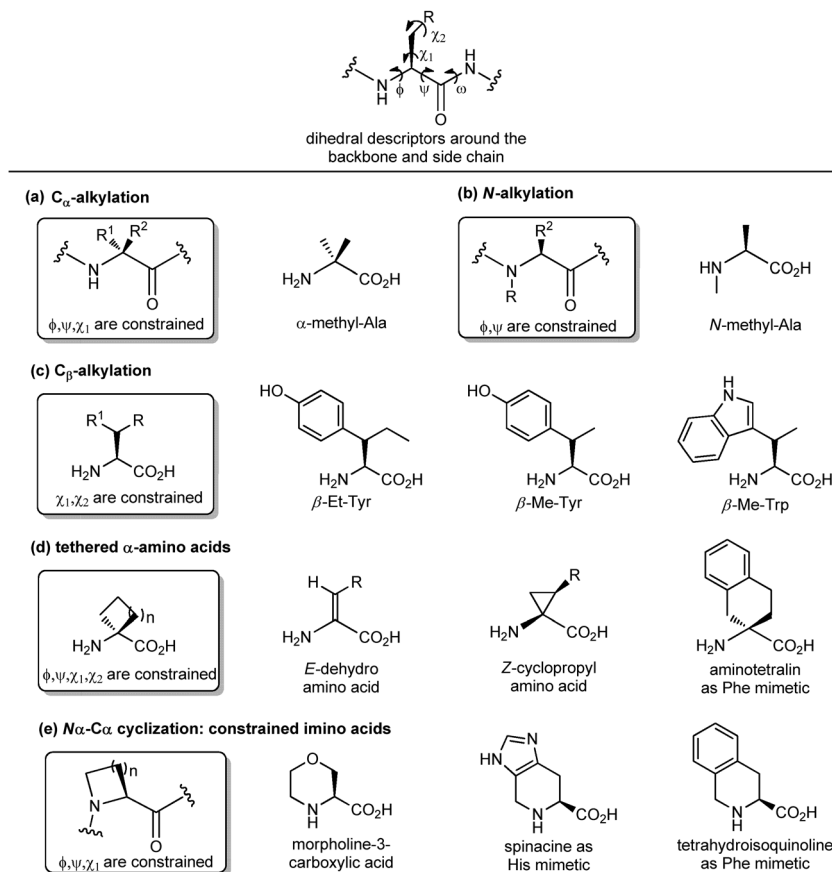


Fig. 6 Panel of different synthetic approaches for constraining the backbone and side chain dihedral angles: (a) C_α -alkylation, (b) N-alkylation, (c) C_β -alkylation, (d) formation of tethered α -amino acids and (e) $\text{N}_\alpha\text{-C}_\alpha$ cyclization.

A similar approach is offered by *N*-alkylation (Fig. 6b), which results in constraining the ϕ , ψ angles without influencing the χ angle. *N*-Methylation is a traditional approach typically used for understanding the role of each amino acid within a peptide sequence, as it affects both the hydrogen-bonding capability and the conformational profile of the amino acid. On the other hand, the alkylation at the β -position of the side chain (if present) is an approach that results in constraining χ_1 and χ_2 dihedral angles, without affecting significantly the backbone angles, and it is particularly useful for selecting preferentially one rotamer in the case of aromatic amino acids (Fig. 6c). Although the reduction of the conformational flexibility of peptides has been largely focused on constraining backbone dihedral angles, reducing the side chain rotational freedom is equally important for the development of biologically active peptidomimetics, especially in the case of those side chains directly involved in the biological interaction. The control of χ_1 (around the C_α - C_β bond) and χ_2 (around the C_β - C_γ bond) dihedral angles was described by Hraby as the 'design in χ -space'¹⁹ and is generally perceived as the most difficult to achieve in peptidomimetic design. Such restriction can be obtained by introducing a double bond or a cyclopropane ring, resulting in the use of α,β -unsaturated α -amino acids, also called dehydro-amino acids, or cyclopropyl-amino acids, by selecting the appropriate *E* or *Z* isomer to block the desired position of the side chain (Fig. 6d). The tethered approach has been applied also to produce aromatic amino acid mimetics, by developing conformationally constrained bicyclic α -amino acids. For example, 2-aminotetralin-2-carboxylic acid is a constrained phenylalanine analogue that has been used largely for the synthesis of opioid peptides since the Nineties, in the search of non-addictive analgesics with a prolonged duration of action and reduced side effects (Fig. 6d). Similarly, the formation of N_α - C_ω -cyclized amino acids results in constraining both ϕ and χ dihedral angles, and reducing the conformational flexibility around ψ angle.

This is due to the steric hindrance between the cycle and the adjacent residues, as well as the non-bonded interactions between the carbonyl group and the ring. These constrained imino acids,²⁰ have been developed firstly to mimic the key proline residue, by changing the ring size or introducing heteroatoms and substituents at positions 3, 4 and 5, and then to mimic aromatic amino acids. For example, spinacine is a constrained imino acid histidine mimetic that has been used successfully for the synthesis of δ -opioid receptor ligands. Also, tetrahydroisoquinoline mimicking phenylalanine has been used for the synthesis of several protease inhibitors, including farnesyl transferase, acetylcholine esterase and renin (Fig. 6e).

3.1.3 Dipeptide isosteres. A local modification of interest for the development of peptidomimetics, particularly for protease inhibitors, is the substitution of dipeptides with alternative molecular fragments, often cyclic, capable to mimic this segment without the presence of the amide bond. This approach is relevant because the conformational freedom of a peptide bond is reduced by blocking ϕ , ψ , and ω dihedral angles. Since the pioneering work of Freidinger,²¹ who first introduced the piperazinone lactam as a dipeptide isostere (as Ala-Sar mimetic), a wide array of chemical moieties were reported over the years,

spanning from linear phosphinyl or alkenyl derivatives to bicyclic spiranic or bridged structures. Other dipeptide lactams were prepared and screened, as the ring size is able to affect the peptide backbone conformation in different ways. In particular, γ -lactams were found to be the most effective in constraining the torsional freedom, as in the case of the pyrrolidine ring included in the structure of the peptidomimetic inhibitor of plasminogen activator inhibitor-1 (PAI-1) (Fig. 7a). Similarly to what previously described for peptide bond isosteres, a simple approach for reducing the proteolytic lability of dipeptide moieties is offered by the development of stable transition-state surrogates. In this context, alkenyl derivatives mimicking a Tyr-Arg dipeptide unit have been applied to a CXC chemokine receptor type 4 (CXCR4) antagonist with formula cyclo(D-Tyr-Arg-Arg-Nal-Gly),²² and the dihydroxyethylene moiety has been used to replace the Phe-Pro and Pro-Pro dipeptide units in several HIV-1 protease inhibitors (Fig. 7b).¹⁶ Finally, another common approach to replace dipeptide units consists of designing linear or cyclic conformationally biased δ -amino acids that show specific structural properties for developing β -turn mimetics. These compounds can be linear,

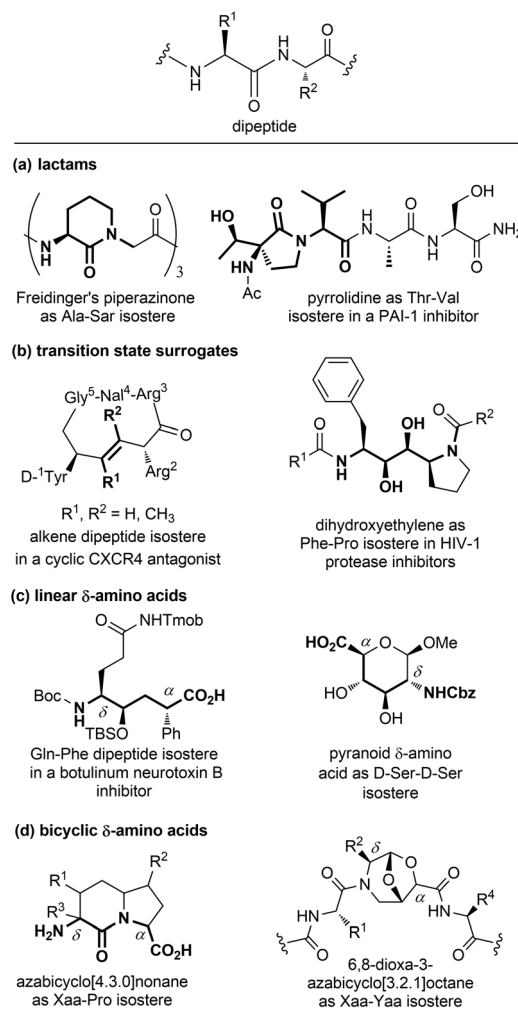


Fig. 7 Panel of isosteres of the dipeptide unit, classified as: (a) lactams, (b) transition state surrogates, (c) linear and (d) bicyclic δ -amino acids.

cyclic or bicyclic (the latter being fused, bridged or spiranic). The simplest ones are linear α,δ -disubstituted δ -amino acids (Fig. 7c), as in the case of the protected hydroxyethylene Gln-Phe surrogate used as a precursor for preparing potential inhibitors of botulinum neurotoxin B metalloprotease.²³

Among monocyclic δ -amino acids, furanoid and pyranoid δ -sugar amino acids are the most relevant examples, especially in the field of β -turn mimetics. These compounds not only constrain the peptide chain thanks to the sugar ring, but possess other useful features of carbohydrates, such as the stereochemical richness and the presence of multiple hydroxyl groups useful for modulating the hydrophilic nature of the template. In particular, pyranoid δ -amino acids can be considered as constrained D-Ser-D-Ser mimetics, and have been used for the synthesis of Leu-enkephalin and somatostatin analogues (Fig. 7c).²⁴ An important sub-group of δ -amino acids are covered by bicyclic compounds, especially for replacing the $i + 1$ and $i + 2$ residues in β -turn systems, as described in Section 3.2.2. As for fused pyrrolidine bicycles, the most important examples are the azabicyclo[3.3.0]alkanes as mimetics of the Xaa-Pro dipeptide unit. Among the group of bridged bicycles, an example is provided by 6,8-dioxo-3-azabicyclo[3.2.1]octane-7-carboxylic acids, that show an atom-by-atom correlation with a dipeptide moiety (Fig. 7d).²⁵

3.2 Secondary structure mimetics

Protein-protein interactions (PPIs) are involved in numerous biological processes and play a key role in several pathological conditions. Thus, the development of molecules able to target PPIs possess a significant therapeutic potential. However, small molecules hardly target PPIs, as the binding surfaces between proteins are usually large and shallow, involving many polar and hydrophobic interactions. This stimulated the search for alternative strategies involving the identification of peptide binding epitopes derived from protein interaction sites that serve as a starting point for the design of PPI inhibitors. Such epitopes are defined usually by secondary structures that aligns amino acid side chains in a well-defined manner, specifically α -helices, β -sheets and β -strands, characterized by specific, repetitive torsion angle ranges, and turns and loops that are characterized by non-repetitive irregular wide range of torsion angles. Bullock and coworkers analysed the full set of helical protein interfaces in the Protein Data Bank and found that about 62% of the helical interfaces contribute to protein-protein interactions.²⁶ However, peptides likely lose their secondary structure when free in solution and this flexible nature can result in a limited stability towards proteolysis and low target selectivity. For these reasons, the development of compounds able to mimic peptides in their exact bioactive conformation is an established goal in this field. Several strategies have been developed to yield peptide secondary structures that enable a projection of side chain functionalities, in analogy to peptide secondary structures, as presented in the next sections.

3.2.1 Mimetics of helices. Helix is the most common peptide secondary structure, constituting more than 30–40% of the polypeptide structure in proteins. They are formed by repetitive sequences stabilized by intramolecular hydrogen-bonds between

sequential residues. Usually, they are classified depending on the number of residues participating in one turn and on the number of atoms between the carbonyl group of the amino acid at position i and the amide proton at position $i + n$. The most widely occurring helix in globular proteins (around 90%) is the 3.6₁₃-helix, better known as α -helix, and 10% of other helices are constituted by the 3₁₀-helix (Fig. 8). Other less common examples of helical conformations are the 14-helix (3₁₄-helix) or the 12-helix (2.5₁₂-helix). As for the relevance of the α -helix in modulating protein-protein interactions, different approaches have been reported to develop more stable and constrained α -helix mimetics, since the early 1980s. Most prominent strategies are herein described.

(a) Peptoids. Peptoids can be described as α -peptide mimetics, in which the side chains are attached to the amide nitrogen atom rather than to the α -carbon atom, thus resulting in a formal shift of the side chain position, with a significant improvement of the resistance to enzymatic hydrolysis and cell permeability (Fig. 7a). In the first peptoids, reported in 1992,²⁷ the monomers were N -substituted glycines, including N -(1-phenylethyl)Gly as β -Me-Phe mimetic or N -(methylimidazole)Gly as Homo-His mimetic. In the same year, the submonomer approach was introduced by Zuckermann, consisting of alternating acylation and nucleophilic displacement reactions using α -haloacetic acid and primary amines, respectively.²⁸ Peptoids fold into chiral helices similarly to type I polyproline helix, and the amide bonds adopt a *cis* geometry, with the macrodipole being oriented opposite to the α -helical patterns. Thus, the resulting helical conformation is stable even in different solvents and/or at different pH values. However, as peptoid backbones lack of chiral centers and hydrogen-bond donor atoms, the folding of these molecules driven by intramolecular interactions can be challenging. In fact, they can accommodate distorted *cis* and *trans* amide conformers, as well as tight turns. To solve this problem, hybrid structures containing N -alkyl- β -alanine monomers (as β -amino acid mimetics) have been developed to construct β -peptoids, β -peptides (also called foldamers, see next) or hybrid α/β -peptoids. Another strategy for stabilizing the peptoid structure consists of constraining the linear peptoid into a macrocyclic structure, with head-to-tail cyclization, or side chain-to-side chain cross-links (see Section 3.3). Peptoids have important applications in the field of antimicrobial peptides (AMPs). In fact, these small amphiphilic peptides possess a cationic region important for the bacterial cytoplasm membrane permeabilization, while being selective for the neutral mammalian cell membrane. Much effort has been focused on developing peptoids able to mimic these structures, to increase the poor pharmacokinetic profile of AMPs and to access the drug market.²⁹ Recently, a novel peptide-peptoid hybrid able to fight bacterial pathogens involved in canine skin infections has been developed (Fig. 8a), including *Staphylococcus pseudintermedius* and *Pseudomonas aeruginosa*, that are resistant to other antimicrobial compounds.³⁰

(b) Foldamers. Firstly introduced by Gellman as 'any polymeric structure capable of adopting a specific folded conformation',³¹ foldamers are now defined as non-natural compact oligomeric

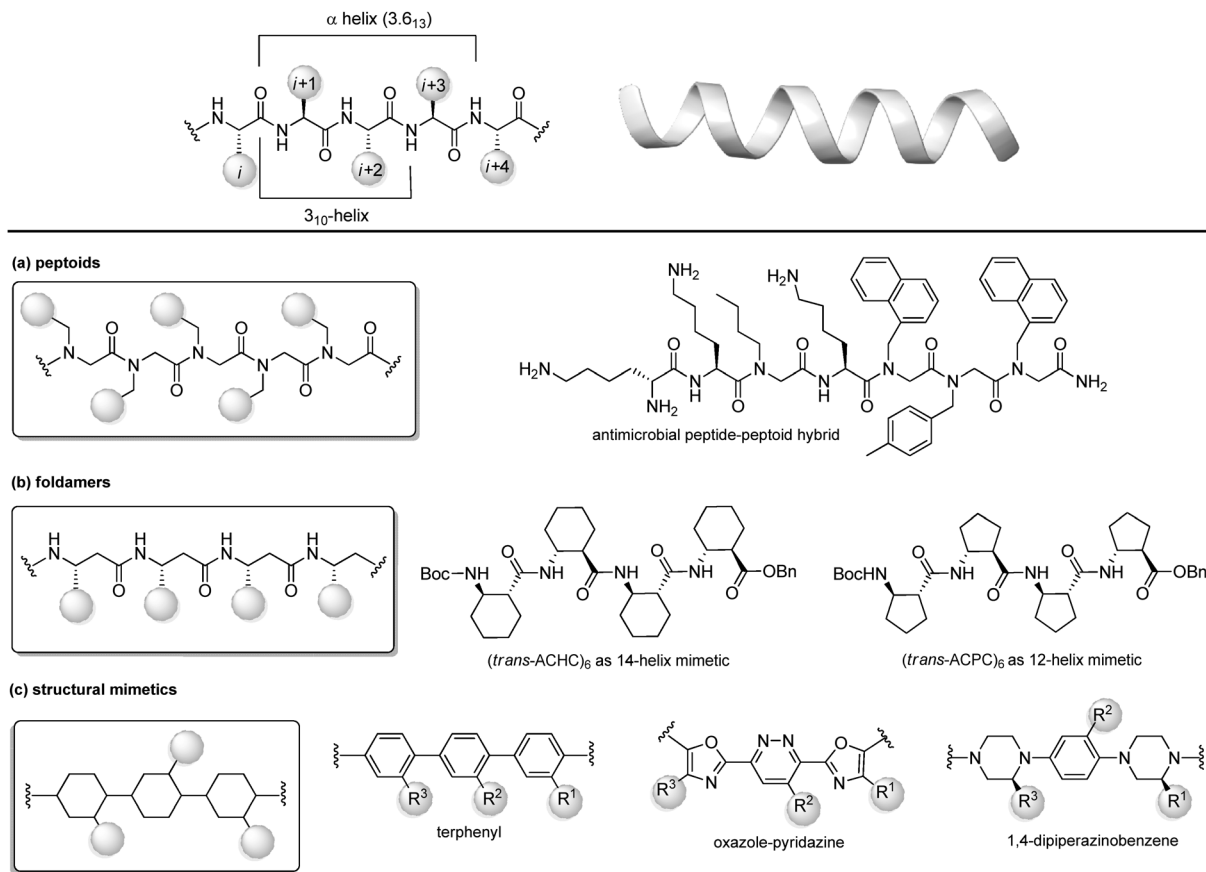


Fig. 8 Chemical approaches for stabilizing peptide mimetics of α -helices. (a) peptoids; (b) foldamers; (c) use of structural mimetics.

structures characterized by a well-defined spatial organization.³² They can be composed by nucleotides (in case of nucleotidomimetics), aromatic compounds (abiotics) or synthetic monomers mimicking amino acids (as in the case of peptidomimetics). Although peptidomimetic foldamers can potentially adopt every secondary structure, depending on the monomeric units used and the ratio between them, they play a relevant role for the development of helix mimetics. In particular, they are classified depending on the different peptidomimetic units that are used to mimic α - to δ -peptide backbones. Foldamers of α -peptides include the previously described peptoids, as well as *N*-permethylated peptides, azapeptides, and oligomers composed of 1,2-diaminoethanes, oxazolidin-2-ones, and pyrrolinones. γ -Peptides can be mimicked by using vinylogous peptides, urea and carbamates, while foldamers of δ -peptides are carbopeptoids and amide-linked sialooligomers. The most exhaustively studied foldamers are β -peptides, as they show well-characterized folding properties and a high structural similarity to α -peptides. They are synthesized by the consecutive coupling of β^2 , β^3 - (bearing a side chain at position C₂ or C₃, respectively) or $\beta^{2,3}$ -amino acids (with two side chains at both C₂ and C₃ positions), as well as coupling cyclic derivatives, such as *trans*-aminocyclopentane carboxylic acid (ACPC) and *trans*-aminocyclohexane carboxylic acid (ACHC) (Fig. 8b). These foldamers, initially thought to possess high flexibility, show a more pronounced tendency to fold into a helix as compared to their α -peptide analogues, and it is proved that

the driving force to the folding process is due to the flexibility of the C $_{\alpha}$ -C $_{\beta}$ bond rather than to the hydrogen-bonding network. The preference for each helical conformation can be obtained by modulating the content of monomers. For example, ACHC favours the 3₁₄-helix formation, while the ACPC favours the 2.5₁₂-helix (Fig. 8b). An important class of foldamers is presented by heterogenous or hybrid foldamers, such as α,β -peptides, constituted by the combination of α and β amino acids. These structures play a key role in developing peptidomimetics, as the presence of α -amino acids guarantee the surface recognition and interaction as in the parent peptide, while the introduction of β amino acids, especially when rigid, cyclic or disubstituted, can be used to improve the resistance to proteolysis and the tendency to give a helical conformation. α,β -Peptides with patterns such as ' $\alpha\alpha\beta\alpha\alpha\beta$ ' or ' $\alpha\alpha\alpha\beta$ ' proved to be relevant for designing various PPI inhibitors. For example, Gellman and coworkers³³ developed a heterogenous α/β -2 foldameric peptide possessing a ' $\alpha\alpha\beta\alpha\alpha\beta$ ' backbone, mimicking the α -helix domain of BH3 protein, responsible for disrupting the PPI between BH3 PUMA and Mcl-1, two important proteins of the BCL-2 family that play a key role in mediating apoptosis.

(c) *Structural mimetics*. While foldamers and peptoids still possess a peptide character, another strategy for designing helix mimetics is the use of molecular scaffolds capable of replacing the essential conformational components of helices.³⁴ The first

example in this field, reported by Hamilton in the early 2000s, is a terphenyl scaffold that projects the substituents at positions i , $i + 4$ and $i + 7$ of the α -helix, thanks to the steric interactions between the *ortho* substituents (Fig. 8c). However, terphenyl compounds are highly hydrophobic and require long and tedious synthetic routes, thus other scaffolds with rod-like structure have been proposed since then, in order to improve the water solubility and to reduce the synthetic complexity. Five or six-membered heteroaromatic rings were conceived, as in the case of the oxazole-pyridazine derivative, where the presence of the heteroatoms at one side of the helix resulted in increasing the polarity of the structure, forming amphiphilic water-soluble scaffolds.

Also, oligoamides, such as the terpyridyl scaffold or the 3-*O*-alkylated oligobenzamide, possessing rigid frameworks and an intricate network of hydrogen-bonds, showed a pronounced curvature and an eclipsed disposition of the substituents. Generally, oligoamides are more synthetically accessible and easier to functionalize, as well as being more water-soluble, although showing reduced activity as PPI inhibitors. Other hydrogen-bond-guided scaffolds are terephthalamides, benzoylureas, thioester-substituted arylamides and biphenyl-4',4-dicarboxamides. Finally, 1,4-dipiperazinobenzene oligomers, possessing chiral backbones, proved to be valuable rod-like structures to mimic the α -helix when adopting the *trans* conformation. These structures, characterized by a highly structured arrangement, show high binding specificity and inhibitory potential, and a good cell permeability, revealing the importance of the three-dimensional complexity in regulating the interaction with the biological target.

Two other approaches involving global restrictions used to stabilize helices are peptide stapling and the introduction of hydrogen-bond surrogates. These approaches are discussed in detail in Section 3.3.1.

3.2.2 β -Turn mimetics. Turns are irregular secondary structures characterized by non repetitive dihedral angles of their backbones, that allow the polypeptide chain to fold back on itself, and are highly recurrent in loop regions playing a relevant role in PPIs. There are four different types of turns, classified depending on the length and on the hydrogen-bonding pattern between the carbonyl group at position i and the amide proton at position $i + n$. In particular, γ -turns are characterized by three amino acids ($n = 2$) and by a hydrogen-bond that forms a seven-membered ring, whereas β -turns are composed by four amino acids ($n = 3$) and a hydrogen-bond forming a ten-membered ring. Turns in which no intramolecular hydrogen-bonds are present are called 'open turns'. Among the different families, β -turns play an important role in many biological recognition systems, such as in several peptide-antibody interactions, and in the binding interaction between peptide ligands and proteins (*e.g.* ligand-activated G-protein-coupled receptors). In this family there are 9 subgroups, as defined by Hutchinson and Thornton (types I, I', II, II', VI_{a1}, VI_{a2}, VI_b, VIII, and IV), so that the side chains of residues between i and $i + 3$ are presented in a stereocontrolled fashion. For each subgroup, a range of small molecule structural mimetics has been developed. In fact, in contrast to other secondary structures, it has been demonstrated how the use of small molecules mimicking β -turns involved in protein-binding interactions can be successful in disrupting PPIs. There are several conceptually different synthetic toolboxes that can be used to design β -turn mimetics (Fig. 9).⁴

(a) *Turn inducing elements.* This approach consists of replacing the amino acid at $i + 1$ and/or $i + 2$ with a suitable element that can induce the formation of the turn and reduce the conformational freedom of that sequence (Fig. 9a). In fact, even in nature, β -turns

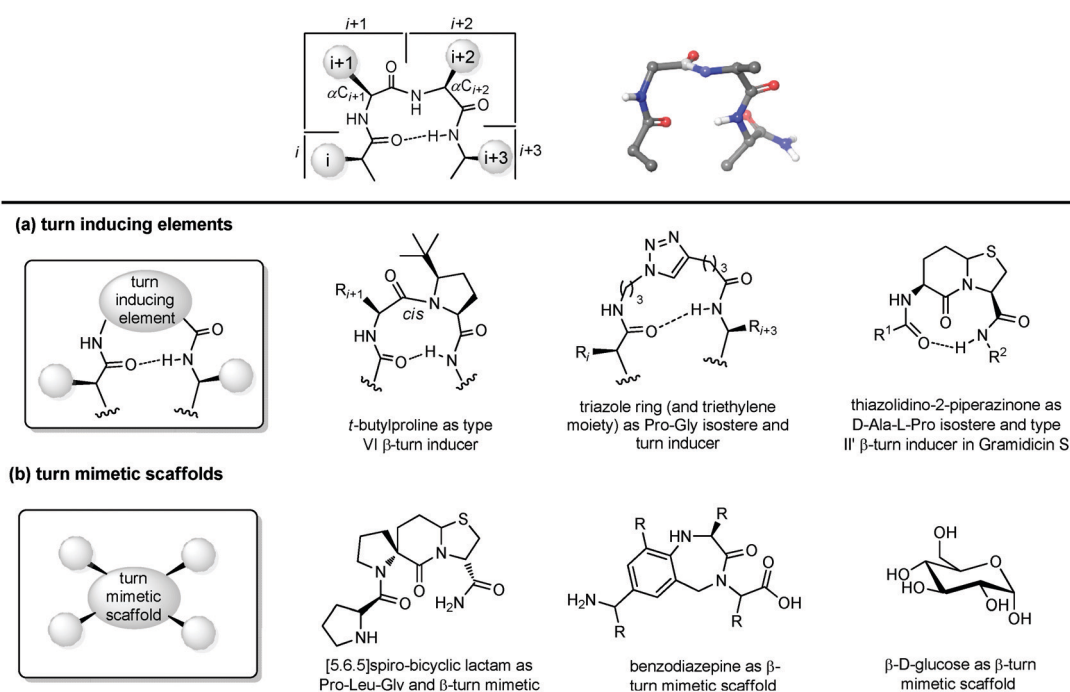


Fig. 9 Chemical approaches for mimicking β turn: (a) use of turn inducing elements, (b) use of small molecular scaffold as structural mimetics.

are often populated by proline residues, as this secondary amino acid has unique properties in directing the folding of the polypeptide chain by controlling the *cis-trans* equilibrium. In particular, two different cases should be distinguished: in type I β -turns, proline is found as a turn inducer at position $i + 1$, generating a *trans* amide bond at the X-Pro sequence, whereas in type VI β -turns proline is present at position $i + 2$ establishing a *cis* amide bond at the X-Pro sequence. In both cases, the use of proline analogues can stabilize the β -turn. For example, the inclusion of D-proline at position $i + 1$ induces the formation of type I and type II' β -turns, whereas 5-*tert*-butylproline forces the amide bond to assume a *cis* conformation, thus stabilizing a type VI β -turn. Other frequently applied turn inducing elements are α -aminoisobutyric acid (Aib), pipercolic- and morpholine-based heterocyclic compounds and the triazole ring. Also, constrained dipeptide isosteres, such as bicyclic proline-based δ -amino acids, as described in Section 3.1.3, can be used to replace the amino acids at positions $i + 1$ and $i + 2$ and to fold the peptide sequence into a β -turn. Hanessian and Lubell reported an extensive overview of tethered prolines to generate bicyclic compounds of different size and possessing different heteroatoms able to mimic the side chain positions of the central dipeptide of a β -turn,³⁵ such as the thiazolidino-2-piperidinone scaffold, that has been used to mimic the D-Ala-L-Pro type II' β -turn conformation in Gramicidin S.

(b) *Small molecular scaffolds as structural mimetics.* Another approach consists of using a rigid scaffold to replace the entire peptide backbone and aligning the side chains in a spatial arrangement according to peptide turn residues (Fig. 9b). These compounds resemble the central dipeptide sequence present at positions $i + 1$ and $i + 2$, but do not show any amide bonds, so they are more stable and constrained. Usually, they have the amino and the carboxyl groups at opposite positions of the scaffold, so they are ready to be inserted into a peptide and show the same hydrogen-bond as found in the β -turn.

Several scaffolds have been proposed over the years, including spirocyclic lactams, such as the spirobicyclic[5.6.5]lactam exploited as a Pro-Leu-Gly mimetic for the modulation of dopamine receptor activity, and the benzodiazepine scaffold.³⁶

Also, glucose has been used as a β -turn scaffold mimetic, as proved by the development of a somatostatin agonist, as shown in Fig. 1.⁵ β -turn can be also stabilized by adding chemical tethers that constrain the structure. The various macrocyclization approaches are reported in Section 3.3.1.

3.2.3 β -Hairpin mimetics. The combination of two antiparallel β -strands connected through a turn provides a β -hairpin which is stabilized by an extended pattern of interstrand hydrogen-bonds (Fig. 10). Turn-inducing amino acids, such as L-ornithine or the dipeptides D-Pro/L-Pro and D-Pro/L-Gly are privileged motifs used to stabilize a β -hairpin, by allowing the nucleation of peptides into this secondary structure.³⁷ Similarly, dibenzofuran derivatives, azobenzenes, oligoureas or metal complexes can nucleate β -hairpins, as well as more complex β -sheets. Recently, Huc and coworkers reported the use of tertiary squaramides as hairpin turn units that promote the folding of aromatic β -sheets, composed by the 1,8-diaza-anthracene monomers into non peptide foldamers (Fig. 10).³⁸

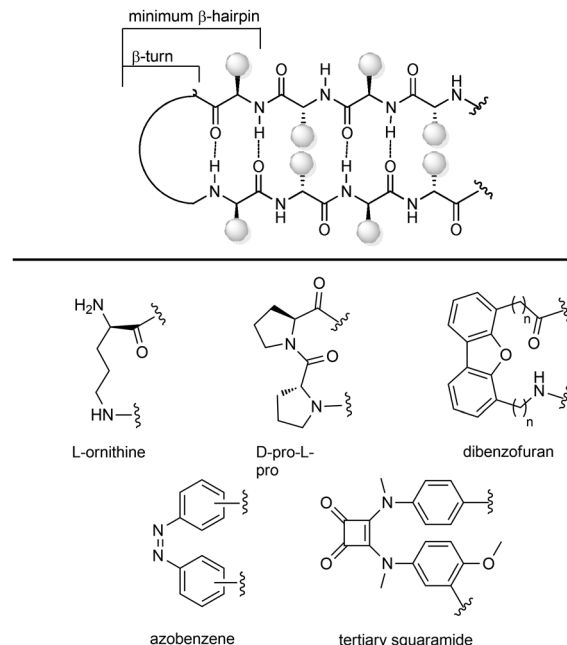


Fig. 10 Stabilization of β -hairpin structures using turn inducing motifs.

β -Hairpins can be also stabilized using interstrand non covalent and/or covalent interactions, as well as through hydrogen-bond surrogates. Further details and examples of these two latter strategies are presented in Section 3.3.1.

3.2.4 β -Sheet mimetics. β -Sheets are secondary structures consisting of β -strands connected by a regular array of intramolecular hydrogen-bonds (Fig. 11). A β -strand is a stretch of polypeptide chain, typically with a length of 3 to 10 amino acids, in which well-defined dihedral angles arrange the amide bonds almost coplanar and the side chains alternatively oriented above and below the plane. β -Sheets are classified on the basis of parallel or antiparallel alignment. In the antiparallel arrangement, the consecutive β -strands alternate directions so that the N-terminus of one strand is adjacent to the C-terminus of the next one. This is the alignment that allows the strongest interstrand hydrogen-bonding interactions between carbonyls and nitrogen atoms, as they are faced appropriately to form close planar hydrogen-bonds. In the parallel arrangement, the two strands have the same orientation, so that the carbonyl and the nitrogen atoms are slightly shifted between one another. This orientation introduces non-planarity in the interstrand hydrogen-bonding pattern, so parallel β -sheets are usually less stable.

Given their key role in the formation of the three-dimensional structure in proteins, β -sheets, β -strands and β -hairpins represent interesting structural elements for the development of peptidomimetics, especially in the field of CNS diseases, as the supra-molecular association of β -sheets has been implicated in formation of protein aggregates, such as the amyloid fibrils in the Alzheimer's disease. Also, considering that the structure and stability of these motifs are still not as well understood as α -helices, developing β -sheet-like peptidomimetics is interesting to study the folding propensities of these structures in peptides

and proteins. The following entries describe the main approaches to develop β -sheet mimetics.³⁹

(a) *Conformationally constrained building blocks to stabilize β -strands.* Constrained amino acid mimetics can be used to reproduce the typical hydrogen-bonding pattern and the side chain functionality of a β -strand, stabilizing the overall β -sheet structure (Fig. 11a). A typical example of this strategy is presented by the use of the unnatural amino acid Hao (5-hydrazino-2-methoxybenzoic acid), which is able to mimic the hydrogen-bonding edge of a tripeptide in a β -strand conformation, promoting the overall folding into a β -sheet structure, especially when used in the sequence Phe-Hao-Val.³⁹ Other frequently used β -strand-enforcing amino acids are the 1,6-dihydro-3(2H)-pyridinone (Ach), the D-Pro-DADME (1,2-diamino-1,1-dimethylethane) and the 4,5-dihydro-2(3H)-pyrazinone moiety. Two units of pyrazinone have been used in a pentapeptide that was found able to inhibit the interaction of the PDZ domain of α -1 syntrophin with nNOS more tightly than the parent peptide.⁴⁰

(b) *Flat small molecule scaffolds as structural mimetics.* Many different molecular scaffolds have been developed, although

the suitable functionalization and diversification of β -sheet structural mimetics is still a challenge, as compared to other secondary structure mimetics (Fig. 11b).³⁹

So far, only the β -strand can be mimicked using structures that are characterized by hydrogen-bond donors and acceptors in exact positions, in order to replicate the hydrogen-bonding network found between β -strands. For example, aromatic scaffolds such as epindolidione and methoxypyrrrole-based amino acid sequence can be used to induce β -sheet-like structures when used to replace one segment of the peptide backbone. Also, oligomers composed of 2,2-disubstituted-indolin-3-ones and the piperidine-piperidinone, possessing limited rotational freedom, can be used to mimic a β -strand.

As for β -hairpins, β -sheets secondary structures can be stabilized by using covalent and non covalent interactions between the strands or between the N-terminus of one strand to the C-terminus of the other one.

3.3 Global restrictions

Transforming a linear peptide into a macrocycle is an attractive strategy for generating a conformationally-reduced peptidomimetic molecule. These approaches are different from the introduction of

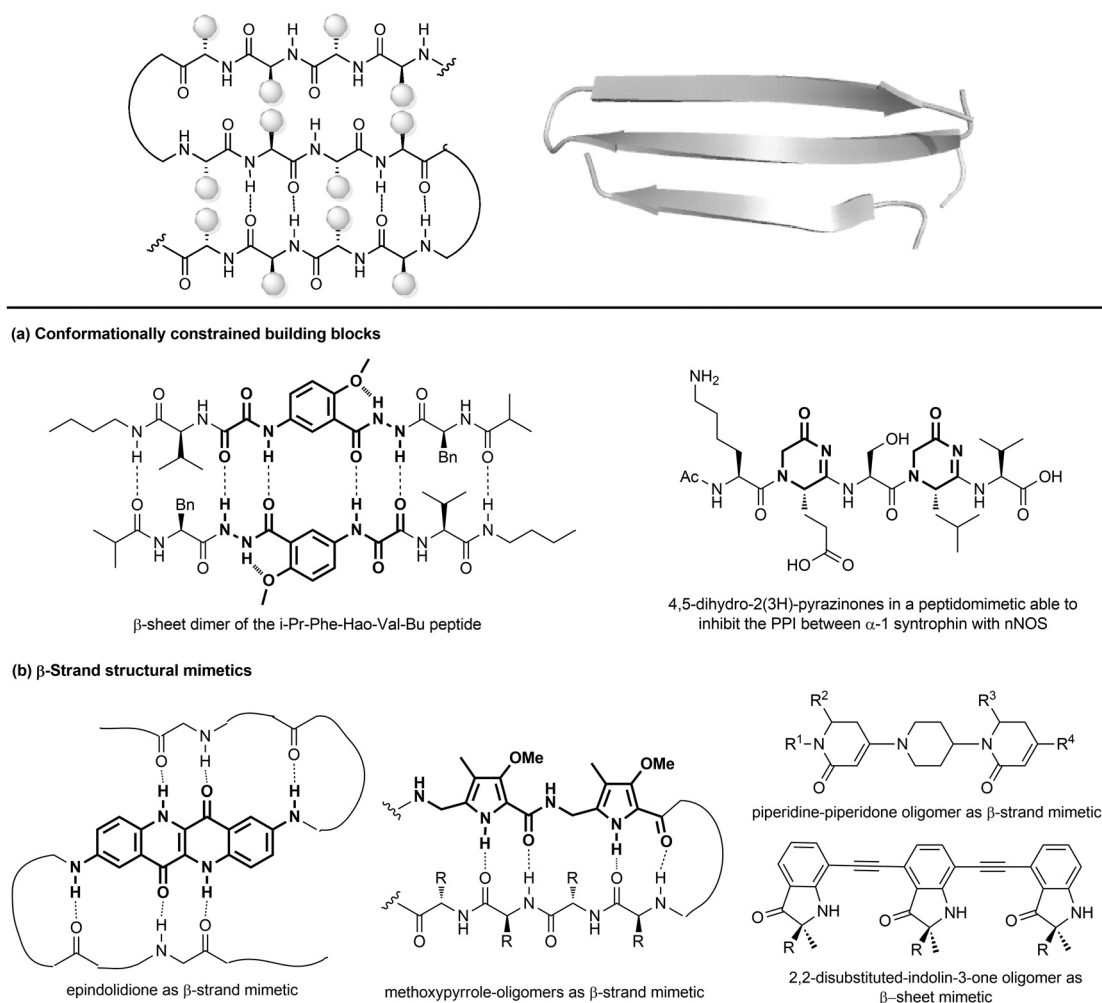


Fig. 11 Stabilization of β -sheets structures using (a) conformationally constrained building blocks and (b) β -strand structural mimetics.

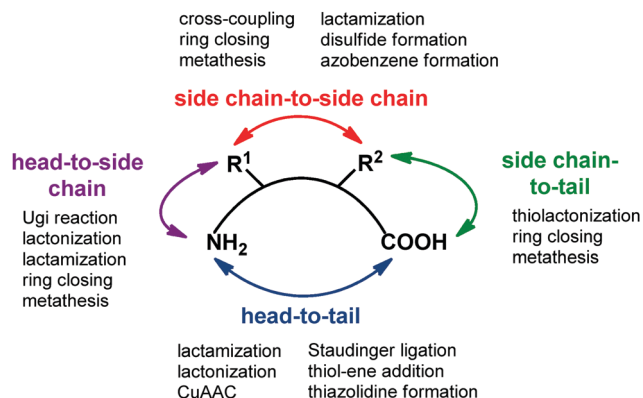


Fig. 12 General synthetic approaches for peptide macrocyclization and most commonly used reactions for each approach.

cyclic scaffolds, as they do not modify the parent peptide locally but involve the modification of the overall conformational profile of the target peptide. Macrocyclic peptides have gained wide attention as therapeutic agents, especially for controlling PPI interactions, which are not easily addressed by small molecules. Also, they show higher metabolic resistance as compared to linear peptides, and can fold into a well-defined conformation, thus resulting in improved receptor selectivity and binding affinity. In fact, they contain a high proportion of *cis* amide bonds, do not contain free C- and N-termini, and possess limited conformational freedom. They are widespread in nature, and examples include somatostatin, the macrocyclic peptide hormone regulating the release of glucagon and insulin, its natural mimetic octreotide, calcitonin, cyclosporine A, nisin and colistin. Cyclization strategies are classified into four different groups (Fig. 12):

1. Head-to-tail (between N- and C-terminal ends).
2. Side chain-to-side chain (by exploiting reactive functional groups on the side chain of natural or non natural amino acids).
3. Head-to-side chain (between N-terminal end and a side chain functional group of an amino acid).
4. Side chain-to-tail (between C-terminal end and a functional group of an amino acid).

Over the years, many synthetic approaches have been developed to cyclize a linear peptide into a macrocycle.⁴¹ Among them, lactamization, lactonization, formation of disulfide bridges between cysteines, triazole formation by CuAAC click chemistry reaction and ring closing metathesis are the most used approaches. Macrocyclization are best performed under high dilution to minimize the unwanted intermolecular processes of oligo- and polymerization. This is often achieved by anchoring the linear peptide to an insoluble polymer. Ring size is the most important factor that governs the success of peptide macrocyclization. Usually, peptides containing more than seven amino acids can be cyclized easily, whereas smaller peptides are rather troublesome. In this case, the incorporation of turn-inducing structural elements, as internal conformational helper, can improve the success of the macrocyclization, by favouring the accommodation of the backbone in the transition state conformation with the least amount of strain. If internal conformational elements cannot be used,

external reagents that assist peptide macrocyclization can be exploited. Examples include carbosilane dendrimeric carbodiimides, metal ions such as lithium, caesium and silver(I) salts, and non ribosomal enzymes, such as thioesterase or butelase-1, that are found to be unique in cyclizing a range of peptide substrates in nearly quantitative yields and short reaction times.

3.3.1 Macrocyclization stabilizing secondary structures.

Macrocyclization approaches are particularly useful for stabilizing peptides in their secondary structures. As mentioned above, the stabilization of α -helical conformation is best obtained using peptide stapling (a particular type of side chain-to-side chain cyclization) and by the introduction of hydrogen-bond surrogates (a particular type of head-to-side chain cyclization), whereas β -turns and β -hairpins are best stabilized by tethering head-to-tail cyclization approaches.

Peptide stapling consists of linking two amino acids lying on the same face of a helix at certain positions (specifically i , $i + 4$, $i + 7$). Stapled peptides show enhanced α -helicity, improved protease stability and, in many cases, increased cellular uptake, although sometimes cell permeability may result decreased.⁴² There is no single optimal stapling strategy for all cases, as the choice of the stapling technique depends on both the desired α -helical structure and the nature of the PPI that needs to be studied. In general, both the location and the linker length have to be chosen carefully to avoid interference with target binding and to facilitate efficient helix stabilization. In fact, it has been demonstrated that the stapling element can no longer be considered as an inert structural motif, as it is known to play a role in the overall physicochemical properties of stapled peptides, and sometimes can even interact with the biological target. The most widely used approaches are the ring closing metathesis (also called hydrocarbon stapling) and lactamization. The hydrocarbon stapling technique involves the formation of an olefin-based cross-link which is established by ring closing metathesis between two α,α -disubstituted amino acids bearing olefinic side chains.⁴³ An example of a stapled peptide obtained with this approach is ATSP-7041 (Fig. 13a),⁴⁴ a potent dual inhibitor of both MDM2 and MDMX, whose derivative ALRN-6924, developed by Aileron Therapeutics, is currently being evaluated in multiple clinical trials as an antitumor compound for p53-positive cancers. Multicomponent reactions proved to be powerful tools for peptide macrocyclization and stapling, as they can increase the molecular diversity and the length of the linkers, providing a fine-tuning of specific conformations and physicochemical properties of the resulting peptide. Most widely used multicomponent reactions for peptide stapling approaches are those based on imines (Strecker, A³ and Petasis reactions) and on isocyanides (Passerini, Yudin, Ugi and Ugi-Smiles reactions).⁴⁵

Hydrogen-bond surrogates are used to stabilize N-terminal caps and help the nucleation of α -helices. Generally, at the N-terminal position of a α -helix an amino acid such as aspartic acid or asparagine is found, being able to form a strong hydrogen-bonding interaction with backbone amides at position $i + 2$ or $i + 3$. The main idea of this head-to-side chain approach is to replace this hydrogen-bond with a covalent linker between the N-terminal amino acid and a side chain of the amino acid at position $i + 3$,

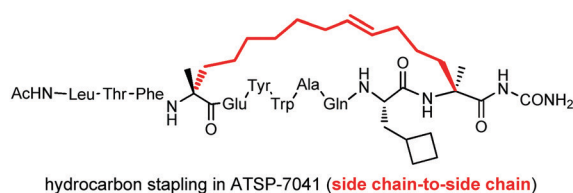
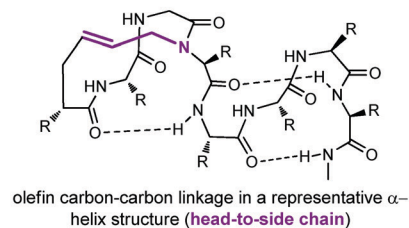
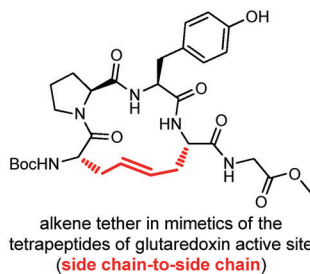
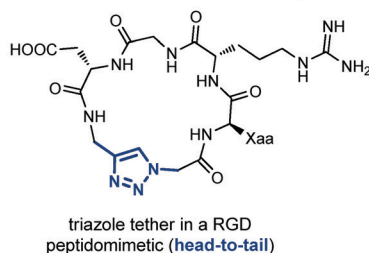
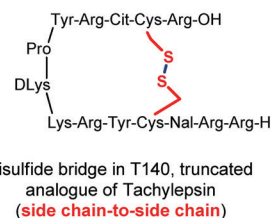
(a) peptide stapling for stabilizing α -helices(b) hydrogen bond surrogates for stabilizing α -helices(c) macrocyclization for stabilizing β -turns(d) macrocyclization for stabilizing β -hairpins

Fig. 13 Representative examples of macrocyclization used to stabilize: (a) α -helices with peptide stapling; (b) α -helices with hydrogen-bond surrogates; (c) β -turns; (d) β -hairpins.

in order to stabilize the helix, as helix nucleation is the energetically most demanding step. Various linker types have been developed over the years,⁴⁶ but a commonly used strategy is the ring closing metathesis reaction to form a double bond cross-link between 4-pentenoic acid (used as a terminal amino acid surrogate) and a *N*-allyl dipeptide monomer inserted at the end of the interactive sequence (Fig. 13b). This approach, previously developed to stabilize α -helices, has been recently applied to stabilize β -hairpins, too, even though only few examples have been reported, so far.⁴⁷

Another important approach for the stabilization of β -turns and β -hairpins is presented by the generation of cyclic peptidomimetics through the formation of a chemical tether. For example, the CuAAC reaction was used to obtain a RGD peptidomimetic, containing the triazole ring as a turn stabilizing element in place of an amino acid, thus obtaining a cyclo[Arg-Gly-Asp-(triazole)-Gly-Xaa] sequence that showed cytotoxic activity in the submicromolar range and a conserved β -turn profile (Fig. 13c).⁴⁸ Similarly, the ring-closing metathesis was used by Grubbs and coworkers to replace the disulfide bridge in some tetrapeptides present in the glutaredoxin active site that are naturally folded as β -turns (Fig. 13c).⁴⁹ An example of the use of the disulfide bridge between two cysteines is found in the amphiphilic peptides of Tachylepsin family and their truncated analogue, such as T140 peptide, which is known to inhibit the T-cells infection of HIV-1, by blocking the interaction with the CXCR4 chemokine receptor (Fig. 13d).⁵⁰

4. Conclusions and future directions

The development of peptidomimetics is a powerful tool in medicinal chemistry, due to the importance of transforming the non orally available and proteolytically unstable peptides into compounds with improved bioactivity and pharmacokinetics.

During last decades, the basic concepts and approaches to peptidomimetic compounds have evolved, and many different strategies have been developed to reduce the conformational flexibility and the peptide character of the overall structure. Even the classification has evolved, from an historical arrangement based on structural and functional characteristics of the compound, to a broader classification that includes new approaches based on high molecular weight foldamers and peptoids. In this tutorial review, main chemical approaches have been organized by the entity of modifications on the parent peptide. Local modification are those synthetic tools that can be used to replace a peptide bond, a side chain or a dipeptide unit with a conformationally constrained and proteolytically stable isostere group. These tools are used especially for the development of enzyme inhibitors and receptor ligands. On the other hand, the use of secondary structure mimetics, able to reproduce the folding of helices, turns and β -sheets, play a key role for the development of PPI modulators, as the binding surfaces between proteins are usually large and shallow, involving numerous polar and hydrophobic interactions. Finally, global restrictions represent useful approaches for generating either conformationally-reduced peptidomimetic small molecule and for stabilizing peptides in their secondary structures folding. In particular, peptide stapling and hydrogen bond surrogates can be used to support α -helices, whereas the introduction of chemical tethers proved useful to enhance the stability of β -turns and β -hairpins. Although the panorama of synthetic tools may seem already rich and vast, it is expected that in the future new approaches for the development of peptidomimetics will be developed. This field is moving towards the development of high molecular weight peptidomimetic with a significant peptide-character, although the development of small molecule peptidomimetics will likely remain timely, in line with the increasing interest to peptide research and development in both pharma and

biotech taking advantage of multidisciplinary science and technology expanding peptide chemical and target spaces.

Conflicts of interest

There are no conflicts to declare.

Acknowledgements

The authors acknowledge MIUR-Italy ("Progetto Dipartimenti di Eccellenza 2018–2022" allocated to Department of Chemistry "Ugo Schiff") and Fondazione Cassa di Risparmio di Pistoia e Pescia (Bando Giovani@Ricerca scientifica 2018) for financial support.

References

- 1 K. Fosgerau and T. Hoffmann, *Drug Discovery Today*, 2015, **20**, 122–128.
- 2 N. Qvit, S. J. S. Rubin, T. J. Urban, D. Mochly-Rosen and E. R. Gross, *Drug Discovery Today*, 2017, **22**, 454–462.
- 3 M. H. Van Regenmortel, *Biologicals*, 2001, **29**, 209–213.
- 4 A. Trabocchi and A. Guarna, *Peptidomimetics in Organic and Medicinal Chemistry: The Art of Transforming Peptides in Drugs*, John Wiley & Sons Ltd, Chichester, UK, 2014.
- 5 R. Hirschmann and K. C. Nicolaou, *Acc. Chem. Res.*, 2009, **42**, 1511–1520.
- 6 G. L. Olson, D. R. Bolin, M. P. Bonner, M. Bös, C. M. Cook, D. C. Fry, B. J. Graves, M. Hatada, D. E. Hill, M. Kahn, V. S. Madison, V. K. Rusiecki, R. Sarabu, J. Sepinwall, G. P. Vincent and M. E. Voss, *J. Med. Chem.*, 1993, **36**, 3039–3049.
- 7 P. S. Farmer and E. J. Ariens, *Trends Pharmacol. Sci.*, 1982, **3**, 362–365.
- 8 J. Vagner, H. Qu and V. J. Hruby, *Curr. Opin. Chem. Biol.*, 2008, **12**, 292–296.
- 9 A. S. Ripka and D. H. Rich, *Curr. Opin. Chem. Biol.*, 1998, **2**, 441–452.
- 10 M. Pelay-Gimeno, A. Glas, O. Koch and T. N. Grossmann, *Angew. Chem., Int. Ed.*, 2015, **54**, 8896–8927.
- 11 G. R. Marshall, *Tetrahedron*, 1993, **49**, 3547–3558.
- 12 H. Sun, J. A. Stuckey, Z. Nikolovska-Coleska, D. Qin, J. L. Meagher, S. Qiu, J. Lu, C.-Y. Yang, N. G. Sait and S. Wang, *J. Med. Chem.*, 2008, **51**, 7169–7180.
- 13 For a comprehensive review on amino acid and peptide bond isosteres, see: I. Avan, C. Dennis Hall and A. R. Katritzky, *Chem. Soc. Rev.*, 2014, **43**, 3575–3594.
- 14 S. Roesner, G. J. Saunders, I. Wilkening, E. Jayawant, J. V. Geden, P. Kerby, A. M. Dixon, R. Notman and M. Shipman, *Chem. Sci.*, 2019, **10**, 2465–2472.
- 15 For a comprehensive review on triazole-containing peptidomimetics, see: Y. L. Angell and K. Burgess, *Chem. Soc. Rev.*, 2007, **36**, 1674–1689.
- 16 A. K. Ghosh, H. L. Osswald and G. Prato, *J. Med. Chem.*, 2016, **59**, 5172–5208 and references therein.
- 17 L. Moroder and H.-J. Musiol, *J. Pept. Sci.*, 2020, **26**, e3232.
- 18 P. Stefanic and M. S. Dolenc, *Curr. Med. Chem.*, 2004, **11**, 945–968 and references therein.
- 19 V. J. Hruby, G. Li, C. Haskell-Luevano and M. Shenderovich, *Biopolymers*, 1997, **43**, 219–266.
- 20 For a comprehensive review on constrained imino acids, see: O. Van der Poorten, A. Knuhtsen, D. Sejer Pedersen, S. Ballet and D. Tourwe, *J. Med. Chem.*, 2016, **59**, 10865–10890.
- 21 R. M. Freidinger, *J. Med. Chem.*, 2003, **46**, 5553–5566 and references therein.
- 22 K. Kobayashi, S. Oishi, R. Hayashi, K. Tomita, T. Kubo, N. Tanahara, H. Ohno, Y. Yoshikawa, T. Furuya, M. Hoshino and N. Fujii, *J. Med. Chem.*, 2012, **55**, 2746–2757.
- 23 B. E. Haug and D. H. Rich, *Org. Lett.*, 2004, **6**, 4783–4786.
- 24 For a comprehensive review on sugar amino acids based scaffolds, see: T. K. Chakraborty, S. Jayaprakash and S. Ghosh, *Comb. Chem. High Throughput Screening*, 2002, **5**, 373–387.
- 25 A. Trabocchi, G. Menchi, F. Guarna, F. Machetti, D. Scarpi and A. Guarna, *Synlett*, 2006, 331–353.
- 26 B. N. Bullock, A. L. Jochim and P. S. Arora, *J. Am. Chem. Soc.*, 2011, **133**, 14220–14223.
- 27 R. J. Simon, R. S. Kania, R. N. Zuckermann, V. D. Huebner, D. A. Jewell, S. Banville, S. Ng, L. Wang, S. Rosenberg and C. K. Marlowe, *Proc. Natl. Acad. Sci. U. S. A.*, 1992, **89**, 9367–9371.
- 28 R. N. Zuckermann, J. M. Kerr, S. B. H. Kent and W. H. Moos, *J. Am. Chem. Soc.*, 1992, **114**, 10646–10647.
- 29 N. Molchanova, P. R. Hansen and H. Franzy, *Molecules*, 2017, **22**, 1430 and references therein.
- 30 I. Greco, A. P. Emborg, B. Jana, N. Molchanova, A. Oddo, P. Damborg, L. Guardabassi and P. R. Hansen, *Sci. Rep.*, 2019, **9**, 3679.
- 31 S. H. Gellman, *Acc. Chem. Res.*, 1998, **31**, 173–180.
- 32 For a comprehensive review on foldamers, see: D. J. Hill, M. J. Mio, R. B. Prince, T. S. Hughes and J. S. Moore, *Chem. Rev.*, 2001, **101**, 3893–4012.
- 33 B. J. Smith, E. F. Lee, J. W. Checco, M. Evangelista, S. H. Gellman and W. D. Fairlie, *ChemBioChem*, 2013, **14**, 1564–1572.
- 34 For a comprehensive review on α -helices structural mimetics, see: J. M. Davis, L. K. Tsou and A. D. Hamilton, *Chem. Soc. Rev.*, 2007, **36**, 326–334.
- 35 S. Hanessian, G. McNaughton-Smith, H.-G. Lombart and W. D. Lubell, *Tetrahedron*, 1997, **53**, 12789–12854 and references therein.
- 36 E. M. Khalil, W. H. Ojala, A. Pradhan, V. D. Nair, W. B. Gleason, R. K. Mishra and R. L. Johnson, *J. Med. Chem.*, 1999, **42**, 628–637.
- 37 For a comprehensive review on β -hairpin peptidomimetics, see: J. A. Robinson, *Acc. Chem. Res.*, 2008, **41**, 1278–1288.
- 38 J. Atcher, A. Nagai, P. Mayer, V. Maurizot, A. Tanatani and I. Huc, *Chem. Commun.*, 2019, **55**, 10392–10395.
- 39 J. S. Nowick, *Acc. Chem. Res.*, 2008, **41**, 1319–1330 and references therein.
- 40 M. C. Hammond, B. Z. Harris, W. A. Lim and P. A. Bartlett, *Chem. Biol.*, 2006, **13**, 1247–1251.
- 41 For a comprehensive review on peptide macrocyclization strategies, see: C. J. White and A. K. Yudin, *Nat. Chem.*, 2011, **3**, 509–524.

- 42 For a comprehensive review on peptide stapling techniques, see: Y. H. Lau, P. de Andrade, Y. Wu and D. R. Spring, *Chem. Soc. Rev.*, 2015, **44**, 91–102.
- 43 Y.-W. Kim, T. N. Grossmann and G. L. Verdine, *Nat. Protoc.*, 2011, **6**, 761–771.
- 44 Y. S. Chang, B. Graves, V. Guerlavais, C. Tovar, K. Packman, K. H. To, K. A. Olson, K. Kesavan, P. Gangurde, A. Mukherjee, T. Baker, K. Darlak, C. Elkin, Z. Filipovic, F. Z. Qureshi, H. Cai, P. Berry, E. Feyfant, X. E. Shi, J. Horstick, D. A. Annis, A. M. Manning, N. Fotouhi, H. Nash, L. T. Vassilev and T. K. Sawyer, *Proc. Natl. Acad. Sci. U. S. A.*, 2013, **110**, 3445–3454.
- 45 L. Reguera and D. G. Rivera, *Chem. Rev.*, 2019, **119**, 9836–9860.
- 46 A. B. Mahon and P. S. Arora, *Drug Discovery Today: Technol.*, 2012, **9**, 57–62.
- 47 N. Sawyer and P. S. Arora, *ACS Chem. Biol.*, 2018, **13**, 2027–2032.
- 48 Y. Liu, L. Zhang, J. Wan, Y. Li, Y. Xu and Y. Pan, *Tetrahedron*, 2008, **64**, 10728–10734.
- 49 S. J. Miller, H. E. Blackwell and R. H. Grubbs, *J. Am. Chem. Soc.*, 1996, **118**, 9606–9614.
- 50 H. Tamamura, M. Sugioka, Y. Odagaki, A. Omagari, Y. Kan, S. Oishi, H. Nakashima, N. Yamamoto, S. C. Peiper, N. Hamanaka, A. Otaka and N. Fujii, *Bioorg. Med. Chem. Lett.*, 2001, **11**, 359–362.