

## CRITICAL REVIEW

View Article Online  
View Journal | View Issue



Cite this: *Environ. Sci.: Atmos.*, 2022, 2, 829

## Review of methods for assessing deposition of reactive nitrogen pollutants across complex terrain with focus on the UK

Nicholas Cowan,<sup>a</sup> Eiko Nemitz,<sup>a</sup> John T. Walker,<sup>b</sup> David Fowler,<sup>a</sup> John J. Finnigan,<sup>c</sup> Helen N. Webster,<sup>d</sup> Peter Levy,<sup>a</sup> Marsailidh Twigg,<sup>a</sup> Sim Y. Tang,<sup>a</sup> Nuria Bachiller-Jareno,<sup>a</sup> Philip Trembath,<sup>a</sup> Robert P. Kinnersley<sup>e</sup> and Christine F. Braban<sup>a</sup>

This review is a summary of the most up-to-date knowledge regarding assessment of atmospheric deposition of reactive nitrogen ( $N_r$ ) pollutants across complex terrain in the UK. Progress in the understanding of the mechanisms and quantification of  $N_r$  deposition in areas of complex topography is slow, as no concerted attempts to measure the components of  $N_r$  in complex terrain have been made in the last decade. This is likely due to the inherent complexity of the atmospheric processes and chemical interactions which contribute to deposition in these areas. More than 300 studies have been reviewed, and we have consulted with a panel of international experts which we assembled for that purpose. We report here on key findings and knowledge gaps identified regarding measurement and modelling techniques used to quantify deposition of  $N_r$  across complex terrain in the UK, which depending on definition, may represent up to 60% of land coverage across Great Britain. The large body of peer reviewed papers, reports and other items reviewed in this study has highlighted both the strengths and weaknesses in the tools available to scientists, regulators and policy makers. This review highlights that there is no coherent global research effort to constrain the uncertainties in  $N_r$  deposition over complex terrain, despite the clearly identified risk of N deposition to ecosystems and water quality. All evidence identified that enhanced  $N_r$  deposition across complex terrain occurs, and magnitude of the enhancement is not known; however, there are major uncertainties particularly in the differences between modelled and measured wet deposition in complex terrain and representing accurate surface interactions in models. Using simplified estimates for  $N_r$  deposition, based on current understanding of current measurement and model approaches, an enhancement across UK complex terrain in the range of a factor of 1.4–2.5 (*i.e.* 40–150% larger than current estimates) is likely over complex upland terrain. If at the upper limits of this, then significantly more ecosystems in the UK would be at a direct risk of degradation, and the potential for long-term non-remediable water quality issues increased.

Received 21st February 2022  
Accepted 2nd July 2022

DOI: 10.1039/d2ea00012a

rsc.li/esatmospheres

### Environmental significance

No concerted attempts to measure the components of reactive nitrogen ( $N_r$ ) in complex terrain have been made in the last decade due to the inherent complexity of the atmospheric processes and chemical interactions which contribute to deposition. This review highlights that there is no coherent effort to constrain the uncertainties in  $N_r$  deposition over complex terrain, despite the clearly identified risk to ecosystems and water quality. Based on current understanding, an enhancement of  $N_r$  deposition across UK complex terrain (up to 60% land coverage) is in the range of a factor of 1.4–2.5 (*i.e.* 40–150% larger than current estimates), meaning many ecosystems are at increased risk of degradation, and long-term non-remediable water quality issues.

<sup>a</sup>UK Centre for Ecology and Hydrology, Bush Estate, Penicuik, Midlothian, EH26 0QB, UK. E-mail: nicwan11@ceh.ac.uk

<sup>b</sup>U.S. EPA, Office of Research and Development, Durham, NC, USA

<sup>c</sup>The Commonwealth Scientific and Industrial Research Organisation (CSIRO), Black Mountain Science and Innovation Park, Canberra, ATC 2601, Australia

<sup>d</sup>Met Office, FitzRoy Road, Exeter, EX1 3PB, UK

<sup>e</sup>Environment Agency, Research, Assessment and Evaluation, Deanery Road, Bristol, BS1 5AH, UK

<sup>f</sup>College of Engineering, Mathematics and Physical Sciences, University of Exeter, Exeter, EX4 4QF, UK

## 1 Introduction

Complex terrain is an often-used term with different definitions depending on context, referring to areas of land which have irregular topographic features, such as mountains or coastlines, and variations in land use and surface roughness, such as mixed urban, rural, irrigated, and unirrigated. Complex terrain can modify synoptic weather features and generate unique local



airflow changes to create local atmospheric effects such as thermally-driven winds, orographic cloud formation, accelerated flows, increased turbulence and sea breezes. In upland areas, air pollutant deposition to complex terrain determines the inputs onto sensitive habitats and their transport into water catchments. In the UK, water quality is strongly affected by inputs across catchments, which includes atmospheric deposition.<sup>1-4</sup> The contribution of atmospheric deposition to total nutrient loading is highly variable, but in remote semi-natural ecosystems (*i.e.* an ecosystem with most of its processes and biodiversity intact, though altered by human activity), it is the primary route of input.<sup>5</sup> Quantifying atmospheric pollutant deposition in these locations is a persistent modelling and measurement challenge. Research to date suggests that wet and cloud deposition dominate the upland deposition of eutrophying and acidifying compounds in the UK, especially in the west.<sup>6</sup> However, there is a generally unaccounted for but potentially significant enhancement, as well as spatial and temporal uncertainty, in dry deposition in these terrains.<sup>7-10</sup>

Atmospheric deposition of eutrophying and acidifying compounds, including reactive nitrogen ( $N_r$ ) compounds such as ammonia ( $NH_3$ ), is of particular concern because of their adverse impacts on habitat condition and on water quality.<sup>11</sup> In the 1980s the primary concern around upland deposition was on acid deposition, dominated by  $SO_2$ .<sup>12</sup> Emissions of  $SO_2$  have declined dramatically across Europe and North America, and in these countries the focus has now shifted towards  $N_r$  compounds.<sup>13</sup> When  $N_r$  is deposited in upland areas, it can be transported through the environment *via* stream water or groundwater runoff, which in some cases can account for 20–50% of the total atmospheric N deposited to the surface.<sup>7,14</sup> A

fraction of the deposited  $N_r$  is transformed into a gaseous chemical species ( $NO$ ,  $N_2O$  or  $N_2$ ) *via* denitrification.<sup>15</sup> The remainder can accumulate in ecosystems on which they are deposited, in biomass and soil. The balance between emission and accumulation is influenced by the drainage conditions of the site (*i.e.* soil moisture controlled).<sup>16</sup>

When  $N_r$  is added to semi-natural ecosystems, it can lead to decreases in biodiversity and long-term water quality issues, including elevated nitrate levels and discolouration.<sup>17</sup> Many areas are already at risk even from levels of  $N_r$  deposition already accounted for. The critical level ( $C_{Le}$ , concentration below which harmful effects cannot be detected) for  $NH_3$  to mosses and lichens is  $1 \mu g m^{-3}$ , and  $3 \mu g m^{-3}$  for other plants.<sup>18</sup> Much of the UK is already exposed to  $NH_3$  concentrations which exceed this. Similarly, the critical load (prolonged exposure to pollutant above which harm may occur) for nitrogen deposition is also exceeded in many environments within the UK.<sup>19</sup> Establishing long-term sustainable levels of  $N_r$  in vulnerable ecosystems and quantifying the pathways of  $N_r$  in complex terrain remains both a modelling and a measurement challenge. Even on flat terrain, measurement and modelling of  $N_r$  deposition is not a trivial exercise. It normally involves model-measurement fusion methods to quantify deposition, with significant uncertainties. Complex or rough terrain, with hills, mountains, cliffs, gullies *etc.*, is even more challenging and many modelling and measurement methods which would be applicable for flat terrain cannot be used reliably as assumptions in calculations are not always met. There are several processes at work in complex terrain that have the potential to increase deposition compared with flat homogeneous surfaces, including dry deposition enhancement through edge effects

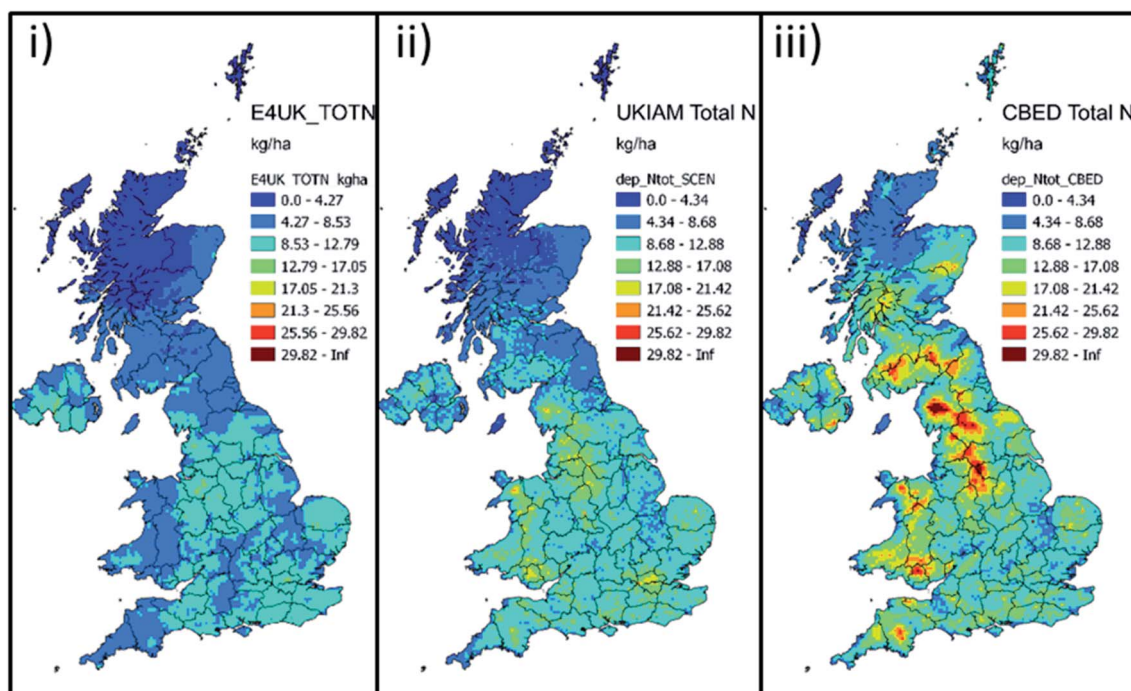


Fig. 1 Total nitrogen ( $N_r$ ) deposition for the year 2016, as estimated by (i) EMEP4UK; (ii) UKIAM and (iii) CBED models.<sup>28</sup>



and topography induced turbulence, wet deposition enhancement through the formation of topographic cloud, the seeder-feeder effect (precipitation from an upper-level precipitating cloud falling through a lower-level orographic stratus cloud that caps elevated terrain) and directional rain, as well as enhanced cloud deposition. Some of these effects are spatially highly variable and result in enhanced deposition loading not only at the catchment scale, but also in localised deposition hotspots, which may coincide with sensitive ecosystem types.

Evidence that large uncertainties exist in estimates of  $N_r$  deposition to upland catchments comes from measurements of deposition,<sup>20</sup> uncertainty of complex terrain flows,<sup>21</sup> and from model inter-comparisons.<sup>22</sup> For example, in the UK, the upland deposition estimated by the concentration-driven CBED (Concentration Based Estimated Deposition) model<sup>23</sup> exceeds that predicted by the EMEP4UK model<sup>24,25</sup> and the UK Integrated Assessment Model (UKIAM<sup>26</sup>), both of which are based on an Atmospheric Chemistry and Transport Modelling (ACTM) approach driven by emissions (Fig. 1). Further assessment suggests that this difference is dominated by a difference in the estimation of wet deposition and this is also reflected by the comparison of the dry and wet deposition  $N_r$  budgets between CBED and the EMEP4UK ACTM for the entire UK (Fig. 2). CBED uses national measurements from bulk deposition samplers combined with a national precipitation map and a correction mechanism for the seeder-feeder effect to estimate wet deposition. In this approach, an overestimation could arise from this correction or the contribution of a dry deposition artefact to the bulk deposition sampling.<sup>27</sup> By contrast, in the ACTM models

concentration estimates are derived from emission estimates also taking into account chemical transformations and atmospheric transport and removal based on measurement-constrained modelled meteorology, rather than *in situ* concentration measurements.

A comparison of seven ACTMs or ACTM implementations<sup>22</sup> similarly highlighted particularly large relative differences in  $N_r$  wet deposition in upland regions – for  $\text{NO}_y$  the range covered approximately a factor 3 and for  $\text{NH}_x$  a factor of 4 (Fig. 3). It is possible that the uncertainty in both the dry deposition estimate and the contribution of dry deposition to total deposition may be underestimated by this comparison because both approaches use similar dry deposition parameterisations based on the assumption that deposition occurs to flat, homogeneous landscapes and they are therefore not fully independent.

Uncertainty in upland nitrogen deposition enhancement is not purely an academic issue in regions with complex topography and sensitive upland ecosystems such as the UK – it is a potential long-term threat to the natural capital of ecosystems and water resources. This review summarises current knowledge on the topic, and hence provides a starting point to inform the steps needed to enable policymakers to quantify the risk of enhanced  $N$ -deposition over complex terrain, and develop a pathway for improving the state-of-knowledge and action-routes to understand, account for and possibly mitigate the risk from excess  $N_r$  inputs to sensitive ecosystems. This review summarises the most up to date knowledge on relevant methods used to model and measure deposition of  $N_r$  pollution in complex terrain, with a focus on the UK.

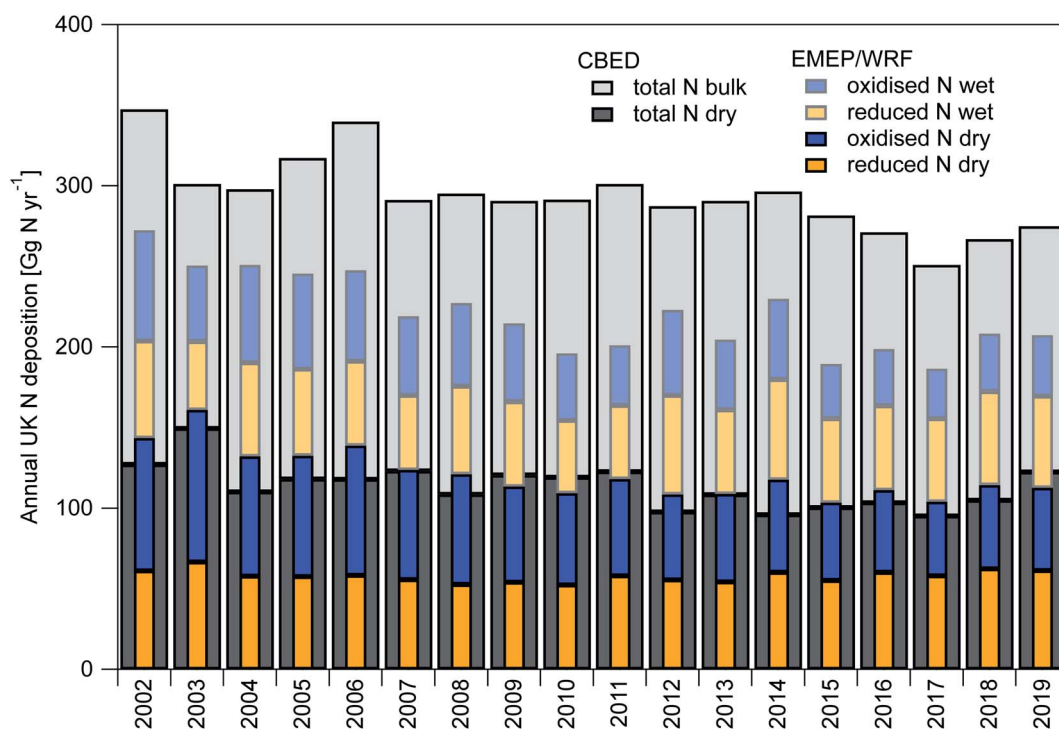


Fig. 2 Time-line of annual total UK deposition budgets of total  $N_r$  as modelled based on measured concentrations by CBED and emissions by EMEP4UK rv4.36 driven with meteorology generated with WRF 4.2.2. Note that EMEP4UK results for 2020 and 2021 are based on the 2019 emission estimates, but 2020 and 2021 meteorology.



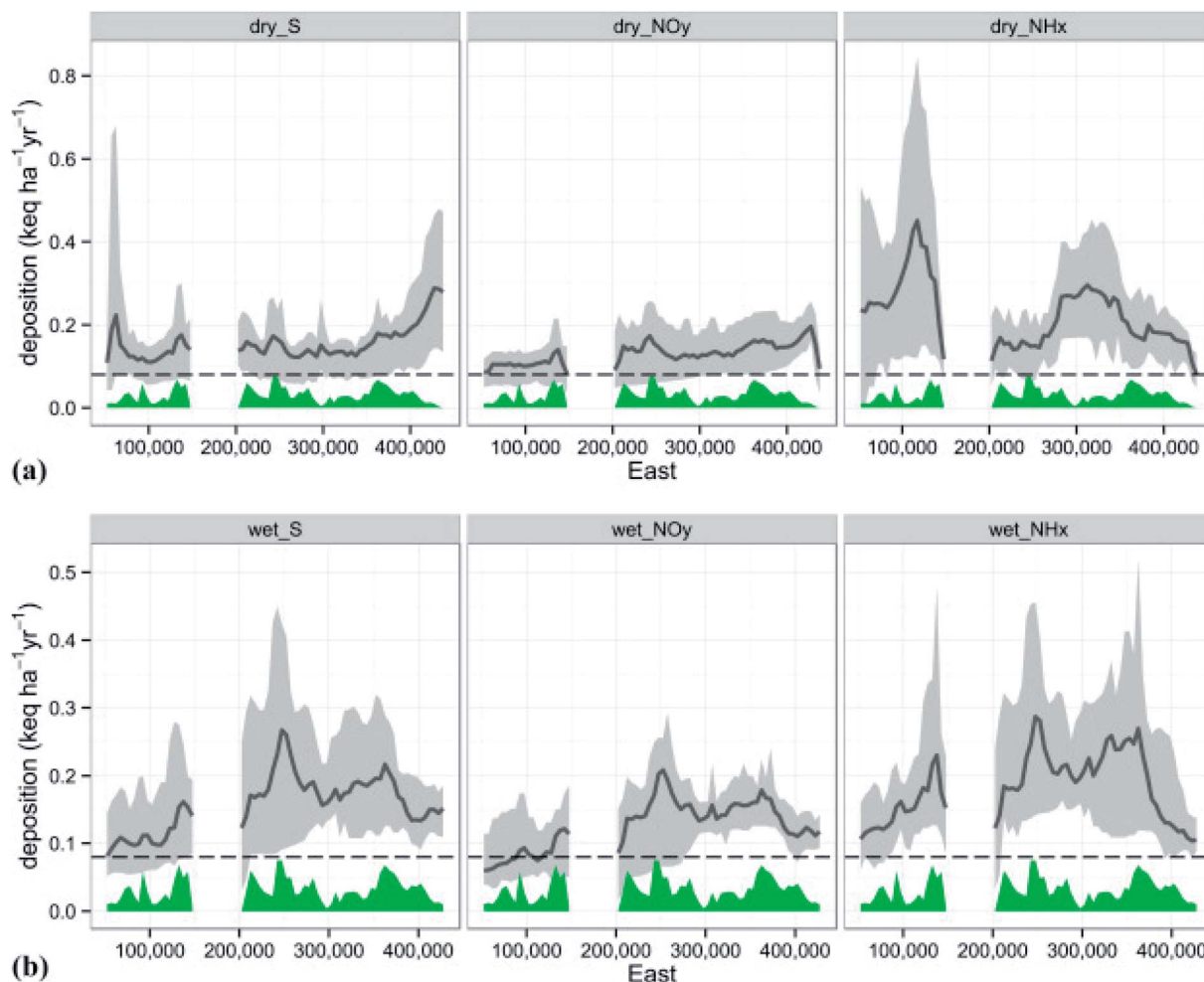


Fig. 3 From Dore *et al.*<sup>22</sup> (their Fig. 4). (a) Transect of dry deposition along a west–east trajectory across the UK. (b) Transect of wet deposition along a west–east trajectory across the UK. The black line illustrates deposition averaged for all models and the grey shaded area shows the range of minimum and maximum modelled deposition. Terrain height is illustrated in green.

## 2 Measurements of pollutant deposition in complex terrain

Deposition to the Earth's surface of a chemical through dry deposition in the gas or particle phase, wet deposition through rainfall (rainout and washout), and occult deposition (*i.e.* deposition of cloud and fog droplets), is a function of chemical concentrations, meteorology, land cover, surface topography and chemical reactivity. Vet *et al.*<sup>29</sup> pointed out that large-scale air pollutant concentration monitoring networks for  $N_r$  are used to inform national atmospheric pollutant assessments despite not capturing some important forms such as organic nitrogen, nor, importantly, the fine scale variations across specific landscapes. A review of the  $N_r$  deposition budget for the continental United States (US), and measurements of pollutant deposition to semi-natural ecosystems concluded that across the continental US, dry deposition contributes slightly more (55%) to total deposition than wet deposition, and it is the dominant process (>90%) over broad areas of the Southwest and Western US.<sup>30,31</sup> Walker *et al.*<sup>30</sup> noted that the lack of dry

deposition measurements imposes a reliance on models (as discussed below), resulting in a high degree of uncertainty relative to wet deposition. However, there are also large uncertainties associated with wet deposition measurement methods that are routinely used. Cape *et al.*<sup>27</sup> undertook a study of wet, bulk and flushed rain gauge deposition and found significant artefacts with both bulk and wet-only collector measurements, with a highly variable dry deposition artefact which is likely to be very dependent on local conditions. With respect to  $N_r$  flux measurements in natural ecosystems, low elevation forests and grasslands have been studied most extensively. There is an extensive literature on  $N_r$  emission fluxes of NO and  $N_2O$ , but relatively few geographical locations have been characterized for total annual  $N_r$  deposition, particularly at background sites. Few studies<sup>32,33</sup> have been undertaken at high elevation, mostly in North America (~3000 m elevation). Precipitation (and fog) sampling at exposed and windy high elevation locations remains a significant challenge in terms of collecting precipitation that is representative of the amount reaching the ground.<sup>34–36</sup> This applies to measurements of rainfall amount



and chemical composition and thus rain gauge networks tend to be biased towards lower elevation sites with models used to extrapolate to upland areas.<sup>37</sup>

There are numerous sources of uncertainty in estimates of  $N_r$  deposition. Organic forms of  $N_r$  are not usually included in the wet or bulk deposition estimates but are known to often contribute 10–40% of the total  $N_r$  in precipitation.<sup>38–40</sup> Emission and re-emission pathways of  $NH_3$  – from emission source, *via* the semi-volatile pollutant “hopping” as it volatilises, redeposits and is converted to other forms of  $N_r$ , to final loss to ecosystems, including freshwater systems, is rather poorly represented in most models and has not been monitored in an intensive, long-term way. Temporal variability of wet, dry and occult deposition and the emissions cycle (for example, spreading of nitrogenous material to land is undertaken seasonally) is an area in which both measurements and modelling are required to understand the dominant form of the risk across the UK. Most emission models use highly parameterised annual emission profiles, which have minimal field validation, and are particularly uncertain for agricultural emissions such as  $NH_3$ . In reality,  $NH_3$  emissions vary with meteorology<sup>41</sup> and there is a significant amount of inter-annual variability in the farming calendar, driven by legislation, meteorology and local practice. This, combined with surface interactions of  $NH_3$ , means that spatio-temporal changes in atmospheric  $NH_3$  concentration, and therefore the deposition profile, are largely unquantified. New information on seasonal and inter-year variability comes from inversions using ground and Earth Observation data.<sup>42,43</sup>

## 2.1 Dry deposition flux measurements using micrometeorological and remote sensing approaches

Direct flux measurements would in theory be the ideal approach to quantify dry deposition to a range of surfaces and to assess the impact of topography and surface properties on deposition. However, for micrometeorological flux measurements to represent the surface flux they need to be conducted over extensive homogeneous and reasonably flat surfaces under conditions of stationary and well-developed turbulence.<sup>44</sup> Whilst it has been shown that they are still reasonably applicable in some non-ideal situations,<sup>45</sup> they are unsuited to measurements in truly complex terrain with steep slopes, cliff edges and heterogeneous vegetation cover. The principles of flux measurements have been reviewed, *e.g.*, by Hicks and Baldocchi,<sup>46</sup> who cover many of the major techniques and limitations. Tower-based micrometeorological methods provide a means to quantify fluxes of gases and aerosols averaged over large areas (typically 1000s to 100 000s of  $m^2$ , depending on tower height and atmospheric stability), and characterise the turbulence and interactions of the pollutants with the surface. The methods do not disturb ambient conditions unlike, for example, chamber measurements. Methods include eddy-covariance (EC)<sup>47,48</sup> and associated methods such as Relaxed Eddy Accumulation (REA)<sup>49,50</sup> as well as flux-gradient approaches.<sup>51</sup>

Particular challenges for micrometeorological measurement of  $N_r$  fluxes include: (a) a comprehensive assessment of  $N_r$

requires many different chemical forms to be measured (*e.g.*  $NH_3$ ,  $HNO_3$ ,  $NO_2$ ,  $NH_4^+$ ,  $NO_3^-$ ), (b) instrumentation that is sufficiently fast for eddy-covariance (typically 10 Hz resolution) or sufficiently precise to resolve vertical gradients ( $\pm$  a few percent), where available, is expensive and difficult to operate, (c) this instrumentation is more suitable to measuring high concentrations (*i.e.* near source) and challenged by the low concentrations typically encountered in complex upland areas and small fluxes.

In particular, fast-response instruments for eddy-covariance measurement of  $NH_3$  concentrations are only just emerging and are still challenged by low concentration environments with few studies using closed-path<sup>52,53</sup> and also open-path analysers.<sup>54</sup>

A recently developed eddy-covariance flux system for total  $N_r$  fluxes, based on a Total Reactive Atmospheric Nitrogen Converter (TRANC) coupled to a fast-response NO analyser arguably provides the most cost-effective eddy covariance approach for the direct measurement of  $N_r$  fluxes by avoiding the need for multiple instruments.<sup>55–57</sup> However, it is still costly, and does not provide data that would help develop specific knowledge within the process of exchange of the individual  $N_r$  forms.

Requirements for fast instrumentation can be overcome by using gradient sampling approaches. Dry deposition flux of  $N_r$  can be estimated as the sum of dry deposition fluxes of  $NH_3$ , nitric acid ( $HNO_3$ ), nitrogen dioxide ( $NO_2$ ) as well as aerosol components ( $NH_4^+$  and  $NO_3^-$ ) (recognising that there can be other significant  $N_r$  chemical species in the atmosphere) with the concentrations of pollutants and micrometeorological measurements at multiple heights.<sup>58</sup> Although this approach has been used in challenging upland sites,<sup>32</sup> concentration gradients are particularly sensitive to measurement location in complex terrain, because each height effectively sees a different footprint which get small for the lowest height where the influence of local heterogeneity effects are largest. Hence when these approaches are used, spatial replication is ideally needed but is rarely done so that care needs to be taken in interpreting and generalising any results. The Conditional Time-Averaged Gradient (COTAG) approach has been developed to provide long-term (weekly to monthly) average flux gradient measurements for a range of trace gases, between land and atmosphere, allowing annual deposition loads to be quantified without the need for real-time analysers.<sup>59,60</sup> Single-height flux measurement approaches like EC and REA quantify the local flux at the measurement height and the challenge becomes to relate this flux to the actual surface exchange. By contrast, gradient approaches under non-ideal conditions are more difficult to interpret. However, despite these caveats, given the paucity of flux data each additional flux measurement is potentially of value. Although these latter approaches do not require eddy-covariance resolution (10 Hz) instrumentation, they are still micrometeorological approaches and so are limited to flat, homogenous surfaces.

Long-term observations of deposition rates are valuable: inferential modelling techniques use dry deposition velocities which in the ideal case are estimated in relation to meteorology, land use as well as canopy and site characteristics, but



parameterisations tend to be crude and insensitive to the nutritional stage of the plants<sup>61</sup> and chemical interactions on the surfaces.<sup>62,63</sup> It is noted that as the chemical composition of the air and the surface characteristics change, it is likely that deposition parameterisations historically measured may therefore not be valid in the current and future chemical climates.

Much of the fundamental modelling work on flows over hills has been motivated by a desire to understand the impact of slopes and hills on eddy-covariance flux measurements and to quantify advection errors so that tower measurements can be related to the true surface exchange, and to develop strategies for the siting of flux measurement towers. The impact on flux measurements has been studied numerically for idealised hills,<sup>64</sup> but the results remain challenging to generalise to more complex real-life situations. Eddy-covariance measurements can in principle be used to quantify the various advection terms during flux measurements in complex terrain which would allow meaningful surface exchange fluxes to be derived. For example, the ADVEX advection experiment<sup>65</sup> deployed four towers with four measurement heights (*i.e.* 16 eddy-covariance systems) to study the advection problem for CO<sub>2</sub> at a number of forest sites, and even with this suite of instruments it was impossible to quantify advective fluxes along the mean flow as they were associated with very small horizontal gradients that were difficult to resolve which appears to be a practical constraint on this approach. In any case, such a study represents a major step-change in complexity compared to traditional use of the method, in which studies typically use one point to measure 3-D wind directions and for  $N_r$  deposition would be extremely challenging: instrumentation is much more expensive and inter-instrumentation differences larger than for relatively high concentration gases such as CO<sub>2</sub>.

Surface and tower meteorological measurement installations can be equipped with remote sensing as well as *in situ* instrumentation. Doppler lidar systems have been used to supplement, and in some cases replace, meteorological towers and are being increasingly used to measure high frequency 3-D movement of wind (both mean flow and turbulent fluctuations). A range of experiments, both onshore and offshore, were performed within the New European Wind Atlas (NEWA) project to evaluate meso- and microscale models,<sup>66</sup> primarily driven by the wind-energy sector requirements rather than meteorological forecasting or air pollution modelling. From the literature reviewed this dataset and the NEWA landscape instrumentation and datasets have not been applied to air pollution physics. It used sites across a significant range of area and slope scales in Europe, with varying topography. Remote sensing of flows around complex topography and vegetation at the sub-planetary-boundary-layer scale is very problematic. Scanning Doppler lidars are currently the only instruments with the required resolution, but the evidence and experience is that they are difficult to deploy in steep topography.

Doppler lidars have also started to be combined with collocated Raman lidars or sun photometers to derive spatially resolved eddy-covariance fluxes of aerosols,<sup>67–69</sup> but little is still understood about the quality of the results. Remote sensing methods are clearly applicable for complex terrain for

monitoring precipitation, aerosol dynamics and non-reactive gases. In particular, precipitation flux receives significant attention globally and there are satellite, surface remote sensing and combined products available.<sup>70–72</sup> There is potential for combining methods which have been used for spatially resolved eddy-covariance fluxes with surface-exchange methods for reactive gases, however the concept and design of those experiments still remains to be developed.

## 2.2 Gas and aerosol chemical concentration measurements

Pollutant gas and particle chemical concentration measurements, in particular of *e.g.* NH<sub>3</sub>, HNO<sub>3</sub>, NO<sub>2</sub>, NH<sub>4</sub><sup>+</sup>, NO<sub>3</sub><sup>−</sup> (but also potentially other  $N_r$  species including HONO, peroxyacetylnitrates (PANs), organic nitrates, reduced organic nitrogen compounds) can be combined with theoretical or empirically measured deposition parameterisations for the specific surface, to calculate pollutant dry deposition. In general, the parameterisations have an assumption of a flat surface. With this approach, the requirement for fast response measurements or gradients is removed, however the generalisations introduce additional uncertainty particularly for complex terrain and variable surface roughness apply. Deposition schemes are either uni-directional (deposition) or bi-directional (deposition and emission).

Though it is possible to use high temporal resolution data (*e.g.* hourly) to calculate dry deposition from concentration, most pollutant deposition approaches use lower resolution concentration data. The time averaged, low cost approaches have been applied, across large spatial scales, and in national networks have long time series of data. The time-averaged samplers (*e.g.* passive or low volume active sampling methods) are used to make measurements of  $N_r$  species such as gaseous NH<sub>3</sub>, HNO<sub>3</sub>, NO<sub>2</sub> and aerosol NH<sub>4</sub><sup>+</sup> and NO<sub>3</sub><sup>−</sup> in many countries,<sup>73–75</sup> and a few continent-wide experiments have been done also.<sup>76</sup> Gas and aerosol chemical concentration measurements are then available to combine with meteorology and deposition schemes to calculate the amount deposition per unit time (usually annual). Passive samplers are particularly suited to measurement in remote environments as they do not require electricity. However, they are limited to gaseous pollutants and for  $N_r$  components most commonly used for NO<sub>2</sub> and NH<sub>3</sub>. Passive samplers were derived from the original work of Palmes in the 1970s,<sup>77</sup> and further work in the 1990s.<sup>78,79</sup> Ammonia passive sampling was reviewed for the CEN Working Group<sup>80</sup> with a standard for measurement published in 2020 (EN 17346:2020). The low-volume active sampling method (UKCEH DELTA®), with fairly low power requirements, was most recently described for Europe and the UK by.<sup>76,81</sup> There are long-term spatial measurements across national scales.<sup>73</sup> Passive samplers for aerosol measurements are also becoming more commonplace,<sup>82,83</sup> however, they capture particles *via* deposition and require an estimate of the deposition velocity to infer air concentrations. The deposition rate to such artificial surfaces is not the same as to real vegetation (*cf.* Section 2.5 below), but is nevertheless likely to be impacted by the heterogeneous turbulence associated with complex terrain. This



Wet deposition of pollutants is routinely measured using bulk precipitation sampling with off-line chemical analysis. With passive or active measurements the uncertainty can be calculated, both from measurement technique approaches as well as chemical specificity –  $\text{NH}_3$  and  $\text{HNO}_3$  in particular are challenging to measure accurately. There are also significant uncertainties in elevated altitudes where measurement using passive or low flow methods will be impacted by high humidity, changes in temperature range, non-vertical rain, snow and being in-cloud/fog, which add considerable uncertainties in the data obtained.

A study by Cape *et al.*<sup>88</sup> assesses changes in orographic enhancement at the one site in the UK which conducted long-term measurements of both cloud and rain sampling and found no trends in the cloud : rain scavenging ratios over the 1994–2008 period. However, this broad scale (5 km × 5 km) resolution mapping and the measurements at one point cannot address the potential risk at specific sites and fine scale complexity. Using the same methodology, Tang *et al.*<sup>79</sup> explored the variability of NH<sub>3</sub> in a Scottish upland landscape. Substantial variability in NH<sub>3</sub> air concentrations and dry deposition was demonstrated within a 5 km × 5 km study area. Ammonia concentrations were typically a factor of 4 larger in the valley compared with the hill areas which correlated with farming activities.

Fog water is difficult to collect quantitatively, in a way that reflects the amount that is actually deposited, and the collected volume varies greatly between collector types, more than fog-water chemistry.<sup>93</sup> Isil *et al.*<sup>94</sup> reported one of the most comprehensive studies of high elevation cloud water and PM and gaseous pollutant concentrations and modelled deposition fluxes. In the high elevation sites, cloud deposition was dominant; however, when (as in this study)  $\text{NH}_3$  is added to the total dry  $N_r$  deposition budget, the contribution from dry is similar to, or even greater than the contribution from the wet component. The challenge of measuring quantitative fog and cloud deposition fluxes is large, however, and requires a programme of monitoring which is undertaken in the US, but not currently across Europe or in the UK.

Newer, indirect methods which may be of use in understanding deposition, and potentially suitable/adaptable to complex terrain, include mapping of pollutant isotope distributions through an environmental system ("isoscares").<sup>95</sup> Bourgeois *et al.*<sup>96</sup> studied  $\text{NO}_3^-$  export from montane (slopes of mountain) streams using three isotopes in addition to standard chemical analyses. They concluded that atmospheric fluxes were underestimated in previous studies. However, the measurements reported required intensive effort to collect and showed high variability. Similarly, Tsunogai *et al.*<sup>97</sup> indicated that atmospheric nitrate in streams could be accurately measured. The isoscape method (coupled with fine scale modelling and source apportionment of wet and dry deposition) would be an indirect approach to assess catchment scale deposition and contribute

Wind tunnel measurements have been used to examine deposition over vegetation in general,<sup>120–123</sup> but also to simplified complex terrain in order to separate processes and understand the drivers of deposition in the landscape.<sup>124,125</sup>

**3.1.1 Dry deposition parameterisations.** Any model that predicts dry deposition needs to describe the interaction of the various compounds with the surface elements. Conventionally, dry deposition is modelled using either prescribed deposition velocities ( $V_d = -\text{flux/concentration}$  at a specified height above the surface) or the resistance analogue,<sup>127</sup> in which the deposition velocity is calculated as a series of, at a minimum, three resistances: the aerodynamic resistance ( $R_a$ ) which describes

Throughfall measurements derive total deposition from the amount of pollutant that drips off vegetation and is collected by throughfall and stemflow (accounting for the quantity of water and solutes that run down the stems of the trees) collectors. For

the canopy and in-canopy transport and relate them to the friction velocity above the canopy. The concept of a friction velocity itself requires a height-invariant momentum flux it therefore does not apply to complex terrain and the relationship between the turbulence above and inside plant canopies is modified by additional infiltration of turbulence into the canopy. Thus, it would be expected that  $R_b$  is also lowered compared with its flat-earth formulation.

**3.1.2 Inferential deposition models.** Inferential deposition models are used to derive dry deposition in situations where concentration is measured but the dry deposition flux is not. This approach uses parameterisations of the factors controlling dry deposition as described in the previous section. The inferential approach requires meteorological parameters as inputs. These can either be taken from direct measurements, predicted using Numerical Weather Prediction (NWP) models, or parameterised from measurements. For example, wind speed, surface roughness and atmospheric stability may be combined to estimate the friction velocity needed to estimate  $R_a$ ,  $R_b$  and  $R_c$ .

In the UK, a dry deposition map is routinely generated by applying an inferential estimate of deposition flux to a spatially interpolated concentration field derived using the CBED modelling system,<sup>23</sup> the latter making use of measurements from the UK National Ammonia Measurement and the Acid Gases and Aerosols Monitoring networks. In the US, the National Atmospheric Deposition Program (NADP) similarly infers deposition fields, combining concentration measurements of  $\text{HNO}_3$ ,  $\text{NO}_3^-$ ,  $\text{NH}_4^+$ ,  $\text{SO}_2$  and  $\text{SO}_4^{2-}$  from the Clean Air Status and Trends Network (CASTNET) with deposition velocities derived from the Community Multiscale Air Quality Model (CMAQ).<sup>31,136</sup> Deposition velocities are not measured routinely and most available data are used to develop the model parameterisations, so the assessment of deposition velocity estimates with independent measured values is not easily available.

A strength of the inferential approach is that it does not rely on estimates of emissions, which are subject to large uncertainties. A downside is that it is even more sensitive to the dry and wet deposition parameterisations than deposition estimates derived with ACTMs, which are by their nature mass-conserved. For example, whilst in the inferential approach a doubling of the deposition velocity infers twice the deposition, this is not the case in ACTMs as deposition lowers the concentration, and hence flux, downwind.

Differences in the parameterisations of the relevant properties of various surface types can lead to considerable differences in the deposition rates predicted by different inferential models even when assuming idealised flat-earth conditions.<sup>81</sup> This is reflected in the parameterisation of  $R_c$  for gases and the surface value of  $V_d$  for particles. One study found uncertainties of >200% for particle deposition velocity.<sup>8</sup> This is partly due to small-scale variability affecting the underlying flux database from which the parameterisations were developed. For example, Brook *et al.*<sup>137</sup> compared estimates of deposition velocities derived from four measurement locations within 500 m of each other and derived variability of  $\pm 40\%$  for  $O_3$  and  $SO_2$  and  $\pm 90\%$  for aerosol  $SO_4^{2-}$ . The variability was primarily attributed to

complex terrain and abrupt changes in vegetation (*i.e.* differences between flux footprints or horizontal heterogeneity).

### 3.1.3 Pushing traditional atmospheric chemistry and transport models to increasingly higher spatial resolution.

Numerical models are the standard tool to quantify deposition over large spatial scales. Normally, the dry (and wet) deposition of pollutants in general, and  $N_r$  in particular, is predicted using atmospheric chemistry and transport models (ACTMs) that simulate the pollutant emission, transport, chemical transformation and deposition. Such models require the outputs from a numerical weather prediction (NWP) model as an input, which can be coupled to the ACTM online or offline.

Such models can be run from global to local scale. All transport models include processes that are explicitly resolved by the numerical solution of a set of differential equations over a gridded model domain and represented by approximated parameterisations at the sub-grid scale. There is an interplay between the spatial and temporal resolution (time-step) of the numerical solver in terms of computational effort and the likelihood and speed of convergence of the numerical model.

As a result, the spatial resolution that can be achieved with an ACTM is not just limited by computational resources and the resolution of the input fields (*e.g.* emissions, land cover, topography and meteorology) but also by model structure and the scales over which the numerically resolved and parameterised processes can be applied. At a time when computational resources were more limited, ACTMs were originally designed for fairly low-resolution applications, and resolutions in the range of 25 to 5 km are common for annual regional or country-wide simulations. At such resolution inadequacies in resolving complex flows have been reported: Thompson *et al.*<sup>138</sup> identified the inability of the underlying NWP model to resolve upslope flows as a key uncertainty when modelling  $N_r$  deposition to Rocky Mountain National Park at 4 km  $\times$  4 km grid resolution using the CAMx model. Using the same model Zhang *et al.*<sup>139</sup> assessed  $N_r$  deposition in the Greater Yellowstone area at 12 km  $\times$  12 km grid resolution and noted meteorological model overestimation of precipitation as a source of disagreement between measured and modelled wet deposition. Difficulty of modelling precipitation in complex terrain was specifically noted.<sup>140</sup>

The resolution to which model resolution can be pushed is often not well documented or may not have been fully established. This applies to both the ACTM and the underlying NWP model. For example, Viatte *et al.*<sup>141</sup> applied the WRF-CHEM model at a resolution down to 333 m  $\times$  333 m and then switched to a different modelling approach (LES, see below) for a nested domain at 111 m  $\times$  111 m resolution. Similarly, the CMAQ modelling system has been available to be applied at a resolution down to 1 km  $\times$  1 km,<sup>142,143</sup> and Garcia-Menendez *et al.*<sup>144</sup> developed an adaptive grid version of CMAQ with localised resolutions of 100 m  $\times$  100 m. Land use-specific dry deposition estimates from the Surface Tiled Aerosol and Gaseous Exchange (STAGE) option in CMAQ v5.3 (ref. 145) can be applied to the underlying CMAQ land use data, *e.g.* 500 m MODIS, 30 m National Land Cover Database (NLCD), to estimate deposition at a finer spatial scale. In the UK, the highest

resolution that has been achieved for full annual runs covering the entire country appears to be 1 km  $\times$  1 km,<sup>146</sup> using a high-resolution implementation of the EMEP model, driven with WRF meteorology.

Although horizontal grid resolutions down to about 300 m  $\times$  300 m are therefore achievable with a range of models, this does not mean these models reflect changes of all parameters at this resolution. For example, even in the 1 km  $\times$  1 km application the lowest vertical model layer of the EMEP model is still limited to at least 45 m because in the tiling approach used: in the EMEP and similar models, the grid-cell average concentration and meteorology needs to be representative for all land-cover types in the grid cell and is then extrapolated to the ground for each tile with land-cover specific parameterisations. In addition, the dry deposition is parameterised with the standard “big-leaf” resistance analogue, which reflects the deposition to large, flat and homogeneous surfaces using the same parameterisations as in the inferential approach outlined in the previous section. Thus, current ACTMs do not account for turbulence created by local terrain, the impacts of small-scale heterogeneity on dry deposition or the horizontal transport into plant canopies. Similarly, orographic impacts on wet deposition are limited to those scales that are resolved by the underlying NWP models, where the effective model resolution typically exceeds the grid resolution by a factor of 5. The main difference between ACTM and CBED estimates of  $N_r$  dep. in the UK is due to wet deposition. The orographic enhancement processes demonstrated in experimental and monitoring studies seems to be the main contributor to this difference and is explicitly included in CBED and not in the ACTMs.

Several approaches have been developed for Eulerian ACTMs to provide higher resolution concentration (not deposition) maps than their grid resolution can provide. For example, in several studies local scale Gaussian plume dispersion models such as ADMS or OPS-ST have been coupled to the coarser scale model to simulate concentration fields along roads and near point sources, including for  $N_r$  compounds such as  $NH_3$ .<sup>147,148</sup> These approaches use additional information on the source location rather than the receptor sites and they are therefore normally more suited to modelling the concentration and deposition of pollutants that originate from complex line and point sources rather than modelling the deposition to complex terrain. In an alternative approach the grid average concentrations provided by the ACTMs are remapped within a grid cell using land use regression approaches. Neither approach utilises higher-resolution turbulence data.

Several countries operate dispersion modelling systems, such as NAME (Numerical Atmospheric-Dispersion Modelling Environment) in the UK,<sup>149</sup> WSPEEDI-II in Japan,<sup>150</sup> based on either Eulerian, Lagrangian, hybrid Eulerian/Lagrangian, or Gaussian puff models. A widely used example of an Eulerian/Gaussian puff modelling system is the CALMET/CALPUFF modelling system,<sup>151</sup> which was used, for example, to model radionuclide deposition from the Chernobyl accident<sup>152</sup> and from a former uranium mill to complex terrain in Colorado,<sup>153</sup> and to tested *e.g.* against the variability in  $^{210}Pb/^{137}Cs$  deposition across a complex landscape in Italy.<sup>154</sup> Another puff



modelling system for nuclear accident assessment is the COMPLEX/TAIPUFF modelling system.<sup>155</sup> By contrast, offline Lagrangian models such as NAME use the flow field from a NWP and then virtually release into it a large number of 'stochastic fluid particles' with a random walk element to slowly build up a mean picture of transport and dispersion. These models can be operated at fairly high resolution (e.g. 1 km × 1 km), and whilst their focus was initially on dispersion and transport of chemically inert tracers and the deposition in particular of particles, NAME has been developed further for a range of air quality applications, including the modelling of sulphur and nitrogen compounds. However, many Lagrangian models are used for a wide range of applications including air quality and have chemistry schemes as well as inert tracers, and do represent deposition of gases as well as particles. The 'stochastic fluid particles' are a computational concept and they represent a certain mass of the specie(s), which could be gases or particles. Such models have been used in complex terrain. One such example is a modelling study of pollen dispersion in a complex island environment.<sup>156,157</sup> Viner and Arritt<sup>156</sup> derived a spatial pattern in pollen deposition due to terrain-induced up and down-drafts, predicting 'gaps' in deposition to the upslopes, the opposite of what was found in other studies.<sup>158,159</sup> However, in their model, pollen was deemed deposited if it came within 1 m of the ground, so their model lacked a mechanistic description of the turbulent deposition process itself. Even where model resolution can be improved to improve the transport in complex terrain, high resolution models still rely on dry deposition process descriptions developed for flat terrain.

The higher the spatial resolution of the underlying NWP model, the better, in principle, is its ability to predict orographic clouds and precipitation. High horizontal resolution also requires high vertical resolution and short model time-steps, which increases computational cost. In principle, the Unified Model of the UK Met Office, for example, can be operated at high spatial horizontal resolution (e.g. 50 m) and the same is true for WRF in LES mode.

However, although NWP models may be operational down to high resolution, their Sub-grid Scale (SGS) components are not necessarily capable of reproducing the physics that control the flow at this scale.<sup>130,160</sup> reviewed current knowledge and remaining challenges regarding the modelling (and measurement) of dispersion in complex terrain, and pointed out that advancements in the parameterizations for turbulence processes suitable for complex terrain are urgently needed to move NWPs to sub-kilometre resolutions (some wind farm forecasts use such parameterizations). They also noted the uncertainty of input data at this scale, such as vegetation and soil characteristics and, in high terrain, snow cover. Without enhanced capacity of  $N_r$  deposition measurements over multiple complex terrains, parameterizations in models are still assumed or averaged based on known land-use types.

Sensitivity studies suggest that a grid resolution of 1.5 km predicts area-integrated rainfall over the Lake District to within 2%, whilst coarser resolutions of 12 and 40 km result in a rainfall under-prediction of 11–24% and 33–48%,

respectively.<sup>161</sup> Nevertheless, even at the 1.5 km scale local errors still occur due to unresolved peaks and valleys. The UK Met Office has invested substantial modelling effort to improve understanding of significant rain events and flooding across complex terrain and Roberts *et al.*<sup>162</sup> demonstrated the benefit of coupling the high-resolution rainfall forecasts to the Probability-Distributed Moisture (PDM) and the improvement in timeliness of flood warning that might have been possible.

Whilst the prediction of transport and orographic rainfall might be expected to improve with increased spatial resolution, measurements are still lacking to ascertain that this is really the case.

### 3.1.4 Modelling flows and pollutant transport over hills.

There is a significant body of work that has investigated the effect of hills on boundary layer flow, turbulence and fluxes, and the additional effect of vegetation as recently reviewed by Finnigan *et al.*<sup>160</sup> This work has not usually been motivated by an interest in deposition modelling, but rather for informing activities such as siting wind turbines and predicting wind-driven erosion and sediment transport, as well as for interpreting micrometeorological (carbon) flux measurements made under non-ideal conditions. Nevertheless, much of the underlying physics and methods are clearly applicable to deposition problems also. Finnigan *et al.*<sup>160</sup> distinguish in their review between (a) investigations into the fundamental physical processes leading to the development of (mostly analytical) models for idealised hills, (b) development of Reynolds-Averaged Navier–Stokes (RANS) models that solve the Navier–Stokes equation based on (higher order) turbulence closure schemes and (c) eddy-resolving large-eddy simulations (LES). The review is comprehensive and not repeated here. Instead, we are here focussing on the few studies that have explicitly considered the deposition problem.

(i) *Exploration of physics and analytical approaches.* Hill *et al.*<sup>163</sup> modelled sulphate fog droplet deposition to Great Dun Fell, a hill in the northern Pennines which was the subject of intensive hill cap cloud experiments in the 1980s and 90s. The focus of that study was on the cloud chemistry, but it had to treat the deposition process as well. In their approach the flow field was generated with the 2-dimensional (linear) airflow model of Carruthers and Choularton<sup>164</sup> and the droplet deposition rate was considered to be limited only by turbulent diffusion (*i.e.*  $R_a$ ). The model was also coupled with a seeder–feeder algorithm to model the wet deposition to an extended area of complex topography.<sup>165</sup> The model was later applied to other study areas, such as Lower Silesia, Poland,<sup>166</sup> and Snowdonia, Wales.<sup>167</sup>

Stout *et al.*<sup>168</sup> modelled particle deposition to a simplified sinusoidal terrain, coupling a linear wave solution for the wind flow with equations of particle motion to show that under strong stratification regions of enhanced deposition occur on the leeward side of the hills.

Whilst several studies have focussed on the flow and transport of the pollutants, most have ignored the fact that the standard description of the deposition process does not hold in complex terrain (see Section 3.2.1). For aerosol deposition,<sup>169,170</sup> investigated the interaction between the hill flow and the



canopy with a 2-dimensional model that combined the multi-layer dry deposition modelling approaches for particles of Petroff *et al.*<sup>133</sup> with modelling concepts for quantifying the flows inside plant canopies over gentle hilly terrain.<sup>64,171,172</sup> Their model results suggest that after the hill summit the rate of deposition (deposition velocity,  $V_d$ ) fell to 30% of its flat terrain value for super-micrometre particles, but that the hill summit effect was smaller on sub-micrometre particles and may therefore the hill summit effect would be smaller for gases also. A combination of wind tunnel experiments, analytical models and LES comparisons for 2D and 3D hills covered with vegetation has shown significant differences between flow patterns and diffusion of particles (both heavy and light) over 2D and axisymmetric hills with the same profile.<sup>173–176</sup>

(ii) *Reynolds-averaged Navier–Stokes (RANS) models.* These types of closure models have developed continuously over the past decades, for example through the introduction of higher-order closure schemes and introduction of non-linear equations, which has gradually extended their range of applicability to steeper slopes and across different atmospheric stability regimes. However, RANS models continue to have problems representing the flow created by abrupt surface features and/or where flow separation occurs.

There are a large number of RANS models used for modelling dispersion in complex terrain, but few studies have focussed on deposition and fewer still on  $N_r$  compounds specifically. Michioka *et al.*<sup>177</sup> simulated dry and wet deposition across idealised ridges and cone-shaped hills in an attempt to reproduce the wind tunnel results of Parker and Kinnersley.<sup>125</sup> They achieved reasonable agreement, but their use of a constant deposition velocity again does not capture the impact of the flow and turbulence field on the deposition process itself. The authors also note that because there are no reliable experimental data for the wet deposition rate for a cone or a two-dimensional ridge, the accuracy of their proposed wet deposition procedure has not yet been confirmed. They point out that, to construct a reliable model, a comparison of the wet deposition obtained by the proposed wet deposition model with observations is required. However ambitious field experiments to generate understanding of the processes and data for the modellers to compare are needed to make significant progress.

A number of higher resolution models have been developed to model the flow and turbulence over complex terrain. One example is the commercial semi-analytical FLOWSTAR model,<sup>178</sup> based on the theoretical work of Jackson and Hunt<sup>179</sup> and Hunt *et al.*<sup>180</sup> Coe *et al.*<sup>181</sup> used FLOWSTAR to model occult deposition to complex terrain. Whilst the model aimed to reproduce the transport pattern, the deposition rate was taken from micrometeorological flux measurements which were necessarily taken over relatively flat terrain. Therefore it does not mechanistically account for the impact of topography on the deposition velocity itself.

A number of studies have used models that use the Eulerian flow fields from RANS models to drive a stochastic Lagrangian particle model, similar to the larger scale models discussed below. Using this approach, Ahmadi and Li<sup>182</sup> simulated the impact of buildings on size-segregated aerosol deposition.

Arritt<sup>183</sup> simulated sulphur dioxide ( $\text{SO}_2$ ) deposition from a point source to complex terrain. As with the other studies, though, the study used a flat-earth representation for the deposition rate.

Blocken *et al.*<sup>184</sup> provided a review of the RANS studies that existed at the time and noted that most dealt with isolated hills rather than more complex situations, a situation that does not appear to have changed. They themselves applied a model with modified k- $\epsilon$  closure to simulate the wind flow in an area of irregular hilly terrain in Galicia, Spain.

(iii) *Large eddy simulation.* Large-eddy simulation is a computational fluid dynamics (CFD) approach that, like NWP models and RANS schemes, solves the Navier–Stokes equation to derive the flow and turbulence field, but unlike NWP and RANS models attempts to resolve the motion of individual turbulent eddy motions down to a specifiable size below which a sub-grid parameterisation comes into effect. WRF models can be used as LES model as well as NWP models, which have planetary boundary layer (PBL) schemes to address gaps in turbulence spectra.

These models can explicitly resolve the impact of terrain, obstacles, and changes in surface roughness down to a specifiable scale and therefore offer advantages over RANS configuration. They can also be embedded into other larger scale models. However, they are computationally very demanding, and studies have therefore focussed on small study volumes and short-term simulations. Most applications of LES models have been targeted at the simulation of cloud simulations over complex terrain, turbulence and, in the area of air pollution, concentration fields. They can be used, for example, to model the turbulence within street canyons and its impact on concentrations, which can vary greatly across the street canyon, in response to wind direction.

LES has been used to model the wind flows and turbulence fields over complex terrain. Wood<sup>185</sup> summarised the approaches available at the time and expansion of computational capability in the past 20 years have led to an increase in the number of studies since. For example, Bhuiyan and Alam,<sup>186</sup> Liu *et al.*<sup>187</sup> and Yang *et al.*<sup>188</sup> all modelled the flow over idealised complex terrain, such as isolated hills and ridges.

LES studies aimed at simulating small-scale variations in dry deposition are comparably rare, however: a number of studies have applied LES to quantify the uptake of pollutants to urban trees planted, *e.g.*, within tree canopies.<sup>189</sup>

**3.1.5 Modelling of wet deposition.** The Parameter-elevation Regression on Independent Slopes Model (PRISM<sup>190</sup>) adds influences of topographical and geographical features to the mapping of wet deposition based on the measurements of the US American National Atmospheric Deposition Program/National Trends Network (NADP/NTN).<sup>191</sup>

In an alternative approach, the inferential UK CBED model accounts for topographic enhancement of wet deposition by estimating the fraction of annual precipitation that is due to orographic enhancement by the seeder feeder process using mapped precipitation (Met office) data. The additional precipitation in the uplands is assumed to be entirely due to seeder-feeder scavenging of orographic cloud water whose



concentration exceeds that of the low-level precipitation field (by a factor of two) and derived from measurements described by Dore *et al.*<sup>192,193</sup>

**3.1.6 Parameterising the impact of complex topography in large-scale models.** The more sophisticated RANS models and especially the LES models are currently too computationally demanding to provide annual deposition maps at a national scale. They are, however, suited to assess the importance of orographic effects on deposition in small study areas or to derive sub-grid parameterisations or meta-models which could be used to develop simplified representations of the effects suitable for use in larger scale ACTMs.

An example modelling system was described by Parker,<sup>159</sup> who used a GIS system to combine empirical deposition modification factors based on the wind tunnel work of Parker and Kinnorsley<sup>125</sup> with high resolution DEM (Digital Elevation Model) data to identify areas (slopes) in which particle dry deposition would be expected to be enhanced or suppressed for a given wind direction. Such a model could theoretically be linked to a dispersion model such as NAME. Model predictions compared favourably with a data set for deposition of radioactive material to Cumbrian hills during the Windscale nuclear accident derived by Argyraki *et al.*<sup>194</sup> from <sup>134</sup>Cs and <sup>137</sup>Cs data recorded by an aerial survey and corrected for subsequent deposition from the Chernobyl accident.

In another scoping study, for the deposition parameterisation itself Hicks<sup>195</sup> proposed a pragmatic approach to reduce  $R_a$  in regions with slopes exceeding 1 in 7 as mentioned above, but conceded that a validation measurement programme still had to be devised.

Weathers *et al.*<sup>196</sup> presented an empirical approach to modelling  $N_r$  and reactive sulphur ( $S_r$ ) deposition to a mountainous forested landscape, using a GIS implementation of a statistical model in which a base deposition was modified by correction factors that accounted for elevation, slope and aspect, topographic exposure, forest type and tree characteristics. For this the scaling factors were derived by applying a multi-linear statistical model to the ratio between local deposition derived from throughfall measurements and a 'baseline' deposition from a nearby NAPD/CASTNET measurement site.

Following a similar approach, Kirchner *et al.*<sup>20</sup> surveyed  $N_r$  deposition along differently exposed slopes in the Bavarian Alps *via* forest throughfall measurements and modelled the dry deposition contributions at the sites with an inferential model that used literature deposition rates, modified by a number of semi-empirical correction factors that were meant to compensate for inclination, wind exposure, frequency of inversions and the frequency of upslope winds. Total correction factors ranged from 0.5 to 2.1. The origin of the values used for these factors is somewhat unclear. They refer to a publication of Benedict *et al.*<sup>197</sup> which reported observations of  $N_r$  species in Rocky Mountain National Park. However, that study reports on the impact of winds on concentrations (related to transport patterns and air mass origin for that particular site) rather than on deposition velocities. Nevertheless, Kirchner *et al.*<sup>20</sup> provide another example of how, in principle, local site characteristics may be used to derive correction factors for deposition rates.

Draaijers *et al.*<sup>116,198</sup> developed an upscaling approach for the related problem of deposition enhancements to forest edges for  $S_r$ ,  $N_r$  and base cations. They also used throughfall measurements to derive aspect-specific enhancements factors across forest edges, and then applied these to Dutch national forest stand data to conclude that edge effects increase the national total deposition of acidifying compounds to forest by 5–10% and of sea salt particles by 20–25%.

Being derived from throughfall measurements these approaches are subject to large uncertainties and they lend themselves only to forest canopy and cannot easily be extended to short vegetation where estimates of terrain-influenced variation in deposition velocity are more difficult to obtain. In addition, absolute deposition values derived in this way are subject to uncertainties related to uptake, leaching and transformations within the canopy (see Section 2.1).

### 3.2 Summary of status on model availability and development to estimate dry deposition to complex terrain

The modelling of pollutant dry deposition to complex terrain consists of three elements: (i) prediction of the flow and turbulence field, (ii) modelling of pollutant transport and dispersion and (iii) modelling of the interaction with the surface and plant canopies. In addition, for wet deposition the models need to predict the presence of (iv) cloud and the location and amount of precipitation and accurately simulate (v) the washout/rainout processes.

Whilst both RANS and LES models have been developed to achieve steps (i) and (ii) for limited areas in great detail, the impact of complex terrain on the dry deposition process has hardly been studied at all. In addition, most effort has gone into modelling particles as a function of size, to simulate, for example, nuclear accidents, industrial releases, pollen and seed dispersal, erosion and dune drift. No mechanistic work could be identified that has looked at the interaction between hills, plant and the dry deposition of gaseous pollutants.

Although the problem that current ACTM approaches perform inadequately in complex upland terrain has been recognised widely in the literature, very few operational solutions have been suggested that may be introduced into ACTMs to represent these processes. In the short term a pragmatic approach could be adopted in which "flat earth" estimates of deposition are modified for terrain influences using heuristics derived from field measurements or from more computationally intensive models. A limiting factor for this is the paucity of measurements made in areas of non-flat topography which could be used to test models and derive heuristics and this is again related to the difficulty of making reliable measurements of all three types of deposition (dry, wet, cloud) at complex and exposed sites.

## 4 Summarising discussion

The considerable body of peer-reviewed papers, reports and other items reviewed in this study has highlighted both the strengths and weaknesses in the tools available to scientists,



**Table 1** Estimation of general  $N_r$  deposition process biases for models and measurements

$N_i$ dep. type	Component	Model/measure	Bias due to complex terrain misrepresentation	Effect on amount of $N$ dep. when bias added in	Comment	Confidence on BIAS estimate	$E_{std}$ factor
Occult	Fog/mist/cloud	Modelled	Under-predicted	Up	Fog interactions at surface increases surface uptake. Will be very specific site	Confident	2-10
Occult	Fog	Measure	Large uncertainty	Do not know	Few studies	Low	
Wet dep.	Rainfall	Modelled	Under-predicted	Up	Assume gas and PM precursor in model not limited	Confident	1.5-2
Wet dep.	Bulk deposition	Measure	Dry deposition = positive bias (locally driven); evaporation/bioprocessing = negative bias	Do not know	Likely counteracting processes	Medium	
Dry dep.	PM	Modelled	Under-predicted	Up	More surface interactions	Medium	1.5-3
Dry dep.	PM	Measure	Under-predicted	Up		Medium	
Dry dep.	$N_r$ gases	Modelled	Under-predicted	Up	Surface area and RH/T/wetness not well represented. Terrain – atmosphere not well characterised	Confident	1.5-3
Dry dep.	$N_r$ gases	Measure	Under-predicted	UP	Measurements not in complex terrain	Confident	
Dry emission	$N_r$ gases	Modelled	Under-predicted	Down	Biochemical and bidirectional physical chemistry processes	Confident	2-10
Dry emission	$N_r$ gases	Measure	Under-predicted	Down	Measurements not done	Confident	

Improvements in computational capacity and associated developments in model development over the past 30 years now permit terrain-resolving models to be operated at high resolution, at least over limited domains and time-spans. Most of the model applications have focussed on concentrations, however,

or the interpretation of fluxes of compounds that are limited by production/consumption (such as CO<sub>2</sub>). We only identified a single effort<sup>169,170</sup> that explicitly addressed the interaction between hill flow and dry deposition where the flux is limited by turbulence, in this case focussing on the deposition of particles to forested terrain. Over the same time, there has been even less improvement in ambient measurement approaches, *e.g.* for measuring cloud and wet deposition under windy conditions, or in methods to derive dry deposition fluxes to complex terrain. As a result, robust measurement data are lacking to validate any emerging modelling approaches. Wind tunnel studies addressing the effect of complex terrain on dry deposition remain rare.

Expanded monitoring and additional process-level research, including new wind tunnel studies, are both needed to better understand deposition of reduced nitrogen compounds (NH<sub>x</sub>), its contribution to total N<sub>r</sub> deposition budgets, and the processes by which it deposits to ecosystems. There is a case for repeating the large-scale hill cloud experiments of the 1990s,<sup>200,201</sup> with state-of-the-art instrumentation and moving from single hills to larger areas of complex terrain, *e.g.* to study the impact of hill chains. This would require a large community effort. Experiments need to be designed to deliver quantitative information, fluxes and the factors driving them, for model validation and to inform parameterisation of operational models. In particular there is a high priority for establishment of long-term sites for process level measurements of reactive chemical fluxes to serve the atmospheric chemistry and ecological communities. However it is also noted that significant method innovation and adaptation may be required to ensure the uncertainties in measurements are lower than the magnitude of the fluxes to be measured.

## 5 Author contributions

This manuscript was compiled by multiple authors, each with expertise on one or more aspects of the review. Each of the authors have contributed both to the manuscript and to discussions during the writing of the report. Nicholas Cowan: carried out literature review, contributed to writing and managed the author contributions to the manuscript. Eiko Nemitz: primary contributor to the modelling aspects of the review. John T. Walker: expert advisor on nitrogen deposition and national-scale deposition modelling. David Fowler: expert advisor on measurements and historical data and modelling efforts. John J. Finnigan: expert advisor on deposition and dispersion modelling. Helen N. Webster: expert on atmospheric dispersion modelling. Peter Levy: expert in micrometeorological monitoring and flux measurements. Marsailidh Twigg: expert on N<sub>r</sub> measurement methods and ammonia deposition. Sim Y. Tang: expert on N<sub>r</sub> measurement methods and ammonia deposition. Nuria Bachiller-Jareno: UK scale mapping and terrain expert. Philip Trembath: UK scale mapping and terrain expert. Robert P. Kinnersley: expert advisor on dry deposition and particle physics. Christine F. Braban: primary contributor to the measurement aspects of the review.<sup>89</sup>

## Conflicts of interest

The authors declare no conflict of interest.

## Acknowledgements

We would like to thank the UK Department for Environment, Food and Rural Affairs (DEFRA) and the Environment Agency (EA) for the funding to carry out this review as part of the Natural Capital and Ecosystem Assessment programme pilot (Contract Reference: 32150). We also acknowledge contribution from UKSCAPE programme, funded by the Natural Environment Research Council as National Capability (Award number NE/R016429/1). We thank expert contributors who joined discussions, which helped inform us during the review. These include Matt Hort, Samantha Smith, Humphry Lean and Gerd Folbeth from the UK Met Office, and Benjamin Loubet, Christophe Flechard and Sylvain Dupont from the Institut national de la recherche agronomique (INRA, France). We acknowledge Dr Massimo Vieno as well as Beth Raine and Cristina Martin Hernandez, all of UKCEH, for providing the EMEP and CBED model data, respectively. The views expressed in this paper are those of the authors and do not necessarily reflect the views of the U.S. Environmental Protection Agency.

## References

- 1 T. E. H. Allott, C. J. Curtis, J. Hall, R. Harriman and R. W. Battarbee, The impact of nitrogen deposition on upland surface waters in Great Britain: a regional assessment of nitrate leaching, *Water, Air, Soil Pollut.*, 1995, **85**, 297–302, DOI: [10.1007/bf00476845](https://doi.org/10.1007/bf00476845).
- 2 C. Curtis, G. L. Simpson, J. Shilland, S. Turner, M. Kernan, D. T. Monteith, N. Rose, C. Evans, D. Norris, E. Rowe, B. Emmett, A. Sowerby, T. Heaton, S. Maberly, N. Ostle and H. Grant, *Freshwater umbrella-the effects of nitrogen deposition & climate change on freshwaters in the UK*, Final report, 2007, available from: [https://uk-air.defra.gov.uk/library/reports?report\\_id=502](https://uk-air.defra.gov.uk/library/reports?report_id=502).
- 3 G. Farr, J. Hall, L. Jones, M. Whiteman, A. Haslam, N. Phillips, S. Tang, H. Williams, P. Davison and D. Lapworth, *Atmospheric deposition at groundwater dependent wetlands phase 2: nutrient source apportionment case studies from England and Wales*, British Geological Survey Internal Report OR/17/021, 2019.
- 4 V. A. Bell, P. S. Naden, E. Tipping, H. N. Davies, E. Carnell, J. A. C. Davies, *et al.*, Long term simulations of macronutrients (C, N and P) in UK freshwaters, *Sci. Total Environ.*, 2021, **776**, 145813, DOI: [10.1016/j.scitotenv.2021.145813](https://doi.org/10.1016/j.scitotenv.2021.145813).
- 5 E. Tipping, J. A. C. Davies, P. A. Henrys, G. J. D. Kirk, A. Lilly, U. Dragosits, *et al.*, Long-term increases in soil carbon due to ecosystem fertilization by atmospheric nitrogen deposition demonstrated by regional-scale modelling and observations, *Sci. Rep.*, 2017, **7**, 1890, DOI: [10.1038/s41598-017-02002-w](https://doi.org/10.1038/s41598-017-02002-w).



- 6 RoTAP, *Review of Transboundary Air Pollution: Acidification, Eutrophication, Ground Level Ozone and Heavy Metals in the UK. Contract Report to the Department for Environment, Food and Rural Affairs. Centre for Ecology & Hydrology*, 2012, available from: <https://www.rotap.ceh.ac.uk/>.
- 7 G. Farr and J. Hall, *Atmospheric deposition at groundwater dependent wetlands: implications for effective catchment management and Water Framework Directive groundwater classification in England and Wales*, British Geological Survey, 2014, available from: <https://rgdoi.net/10.13140/RG.2.2.13249.15209>.
- 8 R. D. Saylor, B. D. Baker, P. Lee, D. Tong, L. Pan and B. B. Hicks, The particle dry deposition component of total deposition from air quality models: right, wrong or uncertain?, *Tellus B*, 2019, **71**, 1550324, DOI: [10.1080/16000889.2018.1550324](https://doi.org/10.1080/16000889.2018.1550324).
- 9 J. T. Walker, M. D. Bell, D. Schwede, A. Cole, G. Beachley, G. Lear, *et al.*, Aspects of uncertainty in total reactive nitrogen deposition estimates for North American critical load applications, *Sci. Total Environ.*, 2019, **690**, 1005–1018, DOI: [10.1016/j.scitotenv.2019.06.337](https://doi.org/10.1016/j.scitotenv.2019.06.337).
- 10 D. K. Farmer, E. K. Boedicker and H. M. DeBolt, Dry Deposition of Atmospheric Aerosols: Approaches, Observations, and Mechanisms, *Annu. Rev. Phys. Chem.*, 2021, **72**, 375–397, DOI: [10.1146/annurev-physchem-090519-034936](https://doi.org/10.1146/annurev-physchem-090519-034936).
- 11 M. A. Sutton, C. M. Howard, J. W. Erisman, G. Billen, A. Bleeker, P. Grennfelt, H. Van Grinsven and B. Grizzetti, *The European nitrogen assessment: sources, effects and policy perspectives*, Cambridge University Press, 2011, available from: <https://www.nine-esf.org/node/204/ENA.html>.
- 12 Acid Deposition at High Elevation Sites, in *NATO ASI Series. Series C: Mathematical and Physical Sciences*, ed. Unsworth M. H. and Fowler D., Springer Netherlands, Dordrecht, 1988, vol. 252, p. 670, ISBN 90-277-2835-6.
- 13 W. Aas, A. Mortier, V. Bowersox, R. Cherian, G. Faluvegi, H. Fagerli, *et al.*, Global and regional trends of atmospheric sulfur, *Sci. Rep.*, 2019, **9**, 953, DOI: [10.1038/s41598-018-37304-0](https://doi.org/10.1038/s41598-018-37304-0).
- 14 Ø. Kaste, K. Austnes and H. A. de Wit, Streamwater responses to reduced nitrogen deposition at four small upland catchments in Norway, *Ambio*, 2020, **49**, 1759–1770, DOI: [10.1007/s13280-020-01347-3](https://doi.org/10.1007/s13280-020-01347-3).
- 15 E. A. Davidson, M. Keller, H. E. Erickson, L. V. Verchot and E. Veldkamp, Testing a Conceptual Model of Soil Emissions of Nitrous and Nitric Oxides, *BioScience*, 2000, **50**, 667, DOI: [10.1641/0006-3568\(2000\)050\[0667:TACMOS\]2.0.CO;2](https://doi.org/10.1641/0006-3568(2000)050[0667:TACMOS]2.0.CO;2).
- 16 W. Ouyang, X. Xu, Z. Hao and X. Gao, Effects of soil moisture content on upland nitrogen loss, *J. Hydrol.*, 2017, **546**, 71–80, DOI: [10.1016/j.jhydrol.2016.12.053](https://doi.org/10.1016/j.jhydrol.2016.12.053).
- 17 J. N. Galloway, F. J. Dentener, D. G. Capone, E. W. Boyer, R. W. Howarth, S. P. Seitzinger, *et al.*, Nitrogen Cycles: Past, Present, and Future, *Biogeochemistry*, 2004, **70**, 153–226, DOI: [10.1007/s10533-004-0370-0](https://doi.org/10.1007/s10533-004-0370-0).
- 18 J. N. Cape, L. J. van der Eerden, L. J. Sheppard, I. D. Leith and M. A. Sutton, Evidence for changing the critical level for ammonia, *Environ. Pollut.*, 2009, **157**, 1033–1037, DOI: [10.1016/j.envpol.2008.09.049](https://doi.org/10.1016/j.envpol.2008.09.049).
- 19 E. Rowe, K. Sawicka, S. Tomlinson, P. Levy, L. F. Banin, C. Martín Hernandez, A. Fitch and L. Jones, *Trends Report 2021: Trends in critical load and critical level exceedances in the UK*, 2021, available from; [https://www.cldm.ceh.ac.uk/sites/cldm.ceh.ac.uk/files/2106241035\\_Trends\\_Report\\_2021.pdf](https://www.cldm.ceh.ac.uk/sites/cldm.ceh.ac.uk/files/2106241035_Trends_Report_2021.pdf).
- 20 M. Kirchner, W. Fegg, H. Römmelt, M. Leuchner, L. Ries, R. Zimmermann, *et al.*, Nitrogen deposition along differently exposed slopes in the Bavarian Alps, *Sci. Total Environ.*, 2014, **470–471**, 895–906, DOI: [10.1016/j.scitotenv.2013.10.036](https://doi.org/10.1016/j.scitotenv.2013.10.036).
- 21 C. L. Meunier, M. J. Gundale, I. S. Sánchez and A. Liess, Impact of nitrogen deposition on forest and lake food webs in nitrogen-limited environments, *GCB Bioenergy*, 2015, **22**, 164–179, DOI: [10.1111/gcb.12967](https://doi.org/10.1111/gcb.12967).
- 22 A. J. Dore, D. C. Carslaw, C. Braban, M. Cain, C. Chemel, C. Conolly, *et al.*, Evaluation of the performance of different atmospheric chemical transport models and inter-comparison of nitrogen and sulphur deposition estimates for the UK, *Atmos. Environ.*, 2015, **119**, 131–143, DOI: [10.1016/j.atmosenv.2015.08.008](https://doi.org/10.1016/j.atmosenv.2015.08.008).
- 23 R. I. Smith, D. Fowler, M. A. Sutton, C. Flechard and M. Coyle, Regional estimation of pollutant gas dry deposition in the UK: model description, sensitivity analyses and outputs, *Atmos. Environ.*, 2000, **34**, 3757–3777, DOI: [10.1016/S1352-2310\(99\)00517-8](https://doi.org/10.1016/S1352-2310(99)00517-8).
- 24 M. Vieno, M. R. Heal, M. L. Williams, E. J. Carnell, E. Nemitz, J. R. Stedman, *et al.*, The sensitivities of emissions reductions for the mitigation of UK PM<sub>2.5</sub>, *Atmos. Chem. Phys.*, 2016, **16**, 265–276, DOI: [10.5194/acp-16-265-2016](https://doi.org/10.5194/acp-16-265-2016).
- 25 Y. Ge, M. R. Heal, D. S. Stevenson, P. Wind and M. Vieno, Evaluation of global EMEP MSC-W (rv4.34) WRF (v3.9.1.1) model surface concentrations and wet deposition of reactive N and S with measurements, *Geosci. Model Dev.*, 2021, **14**, 7021–7046, DOI: [10.5194/gmd-14-7021-2021](https://doi.org/10.5194/gmd-14-7021-2021).
- 26 H. ApSimon, T. Oxley, H. Woodward, D. Mehlig, A. Dore and M. Holland, The UK Integrated Assessment Model for source apportionment and air pollution policy applications to PM<sub>2.5</sub>, *Environ. Int.*, 2021, **153**, 106515, DOI: [10.1016/j.envint.2021.106515](https://doi.org/10.1016/j.envint.2021.106515).
- 27 J. N. Cape, N. van Dijk and Y. S. Tang, Measurement of dry deposition to bulk precipitation collectors using a novel flushing sampler, *J. Environ. Monit.*, 2009, **11**, 353–358, DOI: [10.1039/B813812E](https://doi.org/10.1039/B813812E).
- 28 H. Woodward, T. Oxley, E. C. Rowe, A. J. Dore and H. ApSimon, An exceedance score for the assessment of the impact of nitrogen deposition on habitats in the UK, *Environ. Model. Softw.*, 2022, **150**, 105355, DOI: [10.1016/j.envsoft.2022.105355](https://doi.org/10.1016/j.envsoft.2022.105355).
- 29 R. Vet, R. S. Artz, S. Carou, M. Shaw, C. U. Ro, W. Aas, *et al.*, A global assessment of precipitation chemistry and deposition of sulfur, nitrogen, sea salt, base cations, organic acids, acidity and pH, and phosphorus, *Atmos.*



- Environ.*, 2014, **93**, 3–100, DOI: [10.1016/j.atmosenv.2013.10.060](#).
- 30 J. T. Walker, G. Beachley, H. M. Amos, J. S. Baron, J. Bash, R. Baumgardner, *et al.*, Toward the improvement of total nitrogen deposition budgets in the United States, *Sci. Total Environ.*, 2019, **691**, 1328–1352, DOI: [10.1016/j.scitotenv.2019.07.058](#).
  - 31 J. T. Walker, G. Beachley, L. Zhang, K. B. Benedict, B. C. Sive and D. B. Schwede, A review of measurements of air-surface exchange of reactive nitrogen in natural ecosystems across North America, *Sci. Total Environ.*, 2020, **698**, 133975, DOI: [10.1016/j.scitotenv.2019.133975](#).
  - 32 G. Rattray and H. Sievering, Dry deposition of ammonia, nitric acid, ammonium, and nitrate to alpine tundra at Niwot Ridge, Colorado, *Atmos. Environ.*, 2001, **35**, 1105–1109, DOI: [10.1016/S1352-2310\(00\)00276-4](#).
  - 33 D. Pan, K. B. Benedict, L. M. Golston, R. Wang, J. L. Collett Jr, L. Tao, *et al.*, Ammonia Dry Deposition in an Alpine Ecosystem Traced to Agricultural Emission Hotspots, *Environ. Sci. Technol.*, 2021, **55**, 7776–7785, DOI: [10.1021/acs.est.0c05749](#).
  - 34 L. C. Sieck, S. J. Burges and M. Steiner, Challenges in obtaining reliable measurements of point rainfall, *Water Resour. Res.*, 2007, **43**, W01420, DOI: [10.1029/2005WR004519](#).
  - 35 K. F. A. Frumau, R. Burkard, S. Schmid, L. A. S. Bruijnzeel, C. Tobón and J. C. Calvo-Alvarado, A comparison of the performance of three types of passive fog gauges under conditions of wind-driven fog and precipitation, *Hydrol. Processes*, 2010, **25**, 374–383, DOI: [10.1002/hyp.7884](#).
  - 36 R. Rasmussen, B. Baker, J. Kochendorfer, T. Meyers, S. Landolt, A. P. Fischer, *et al.*, How Well Are We Measuring Snow: The NOAA/FAA/NCAR Winter Precipitation Test Bed, *Bull. Am. Meteorol. Soc.*, 2012, **93**, 811–829, DOI: [10.1175/BAMS-D-11-00052.1](#).
  - 37 J. N. Cape, R. I. Smith, D. Fowler, K. Beswick and T. Choularton, Long-term trends in rain and cloud chemistry in a region of complex topography, *Atmos. Res.*, 2015, **153**, 335–347, DOI: [10.1016/j.atmosres.2014.09.003](#).
  - 38 J. C. Neff, A. R. Townsend, G. Gleixner, S. J. Lehman, J. Turnbull and W. D. Bowman, Variable effects of nitrogen additions on the stability and turnover of soil carbon, *Nature*, 2002, **419**, 915–917, DOI: [10.1038/nature01136](#).
  - 39 J. N. Cape, M. Anderson, A. P. Rowland and D. Wilson, Organic nitrogen in precipitation across the United Kingdom, *Water, Air, Soil Pollut.: Focus*, 2005, **4**, 25–35, DOI: [10.1007/s11267-005-3010-3](#).
  - 40 J. N. Cape, Y. S. Tang, J. M. González-Beniacute, M. Mitošinková, U. Makkonen, M. Jocher, *et al.*, Organic nitrogen in precipitation across Europe, *Biogeosciences*, 2012, **9**, 4401–4409, DOI: [10.5194/bg-9-4401-2012](#).
  - 41 M. A. Sutton, S. Reis, S. N. Riddick, U. Dragosits, E. Nemitz, M. R. Theobald, *et al.*, Towards a climate-dependent paradigm of ammonia emission and deposition, *Philos. Trans. R. Soc., B*, 2013, **368**, 20130166, DOI: [10.1098/rstb.2013.0166](#).
  - 42 F. Paulot, D. J. Jacob, R. W. Pinder, J. O. Bash, K. Travis and D. K. Henze, Ammonia emissions in the United States, European Union, and China derived by high-resolution inversion of ammonium wet deposition data: Interpretation with a new agricultural emissions inventory (MASAGE\_NH3), *J. Geophys. Res.: Atmos.*, 2014, **119**, 4343–4364, DOI: [10.1002/2013jd021130](#).
  - 43 E. A. Marais, A. K. Pandey, M. Van Damme, L. Clarisse, P. Coheur, M. W. Shephard, *et al.*, UK Ammonia Emissions Estimated With Satellite Observations and GEOS-Chem, *J. Geophys. Res.: Atmos.*, 2021, **126**, DOI: [10.1029/2021jd035237](#).
  - 44 I. N. Harman, J. J. Finnigan, S. E. Belcher and E. van Gorsel, Limits to accuracy and optimal instrument deployment for eddy flux measurement in complex terrain, in *Proceedings of the 6th GEWEX and 2nd iLEAPS Science Conference*, Melbourne, AU, 2009.
  - 45 R. Hiller, M. J. Zeeman and W. Eugster, Eddy-Covariance Flux Measurements in the Complex Terrain of an Alpine Valley in Switzerland, *Bound.-Layer Meteorol.*, 2008, **127**, 449–467, DOI: [10.1007/s10546-008-9267-0](#).
  - 46 B. B. Hicks and D. D. Baldocchi, Measurement of Fluxes Over Land: Capabilities, Origins, and Remaining Challenges, *Bound.-Layer Meteorol.*, 2020, **177**, 365–394, DOI: [10.1007/s10546-020-00531-y](#).
  - 47 D. D. Baldocchi, B. B. Hincks and T. P. Meyers, Measuring Biosphere-Atmosphere Exchanges of Biologically Related Gases with Micrometeorological Methods, *Ecology*, 1988, **69**, 1331–1340, DOI: [10.2307/1941631](#).
  - 48 R. L. Desjardins and E. R. Lemon, Limitations of an eddy-correlation technique for the determination of the carbon dioxide and sensible heat fluxes, *Bound.-Layer Meteorol.*, 1974, **5**, 475–488, DOI: [10.1007/BF00123493](#).
  - 49 J. A. Businger and S. P. Oncley, Flux Measurement with Conditional Sampling, *J. Atmos. Ocean. Technol.*, 1990, **7**, 349–352, DOI: [10.1175/1520-0426\(1990\)007<0349:FMWCS>2.0.CO;2](#).
  - 50 A. J. Nelson, S. Koloutsou-Vakakis, M. J. Rood, L. Myles, C. Lehmann, C. Bernacchi, *et al.*, Season-long ammonia flux measurements above fertilized corn in central Illinois, USA, using relaxed eddy accumulation, *Agric. For. Meteorol.*, 2017, **239**, 202–212, DOI: [10.1016/j.agrformet.2017.03.010](#).
  - 51 J. Duyzer, Dry deposition of ammonia and ammonium aerosols over heathland, *J. Geophys. Res.*, 1994, **99**, 18757, DOI: [10.1029/94JD01210](#).
  - 52 U. Zöll, C. Brümmer, F. Schrader, C. Ammann, A. Ibrom, C. R. Flechard, *et al.*, Surface-atmosphere exchange of ammonia over peatland using QCL-based eddy-covariance measurements and inferential modeling, *Atmos. Chem. Phys.*, 2016, **16**, 11283–11299, DOI: [10.5194/acp-16-11283-2016](#).
  - 53 A. Moravek, S. Singh, E. Pattey, L. Pelletier and J. G. Murphy, Measurements and quality control of ammonia eddy covariance fluxes: a new strategy for high-frequency attenuation correction, *Atmos. Meas. Tech.*, 2019, **12**, 6059–6078, DOI: [10.5194/amt-12-6059-2019](#).



- 54 K. Sun, L. Tao, D. J. Miller, M. A. Zondlo, K. B. Shonkwiler, C. Nash, *et al.*, Open-path eddy covariance measurements of ammonia fluxes from a beef cattle feedlot, *Agric. For. Meteorol.*, 2015, **213**, 193–202, DOI: [10.1016/j.agrformet.2015.06.007](https://doi.org/10.1016/j.agrformet.2015.06.007).
- 55 O. Marx, C. Brümmer, C. Ammann, V. Wolff and A. Freibauer, TRANC – a novel fast-response converter to measure total reactive atmospheric nitrogen, *Atmos. Meas. Tech.*, 2012, **5**, 1045–1057, DOI: [10.5194/amt-5-1045-2012](https://doi.org/10.5194/amt-5-1045-2012).
- 56 C. Ammann, V. Wolff, O. Marx, C. Brümmer and A. Neftel, Measuring the biosphere-atmosphere exchange of total reactive nitrogen by eddy covariance, *Biogeosciences*, 2012, **9**, 4247–4261, DOI: [10.5194/bg-9-4247-2012](https://doi.org/10.5194/bg-9-4247-2012).
- 57 U. Zöll, A. M. Lucas-Moffat, P. Wintjen, F. Schrader, B. Beudert and C. Brümmer, Is the biosphere-atmosphere exchange of total reactive nitrogen above forest driven by the same factors as carbon dioxide? An analysis using artificial neural networks, *Atmos. Environ.*, 2019, **206**, 108–118, DOI: [10.1016/j.atmosenv.2019.02.042](https://doi.org/10.1016/j.atmosenv.2019.02.042).
- 58 R. Ramsay, C. F. Di Marco, M. Sörgel, M. R. Heal, S. Carbone, P. Artaxo, *et al.*, Concentrations and biosphere-atmosphere fluxes of inorganic trace gases and associated ionic aerosol counterparts over the Amazon rainforest, *Atmos. Chem. Phys.*, 2020, **20**, 15551–15584, DOI: [10.5194/acp-20-15551-2020](https://doi.org/10.5194/acp-20-15551-2020).
- 59 D. Fowler, N. Cape, R. Smith, E. Nemitz, M. Sutton, T. Dore, M. Coyle, A. Crossley, R. Storeton-West, J. Muller, G. Phillips, R. Thomas, M. Vieno, S. Tang, D. Famulari, M. Twigg, B. Bealey, D. Benham, G. Hayman, H. Lawrence, K. Vincent, H. Fagerli and D. Simpson, *Acid Deposition Processes. Final report to Defra. NERC/Centre for Ecology & Hydrology*; 2007, p. 110 (CEH Project Number: C02379, RMP 2258), (Unpublished).
- 60 D. Famulari, D. Fowler, E. Nemitz, K. J. Hargreaves, R. L. Storeton-West, G. Rutherford, *et al.*, Development of a low-cost system for measuring conditional time-averaged gradients of SO<sub>2</sub> and NH<sub>3</sub>, *Environ. Monit. Assess.*, 2009, **161**, 11–27, DOI: [10.1007/s10661-008-0723-6](https://doi.org/10.1007/s10661-008-0723-6).
- 61 R. S. Massad, E. Nemitz and M. A. Sutton, Review and parameterisation of bi-directional ammonia exchange between vegetation and the atmosphere, *Atmos. Chem. Phys.*, 2010, **10**, 10359–10386, DOI: [10.5194/acp-10-10359-2010](https://doi.org/10.5194/acp-10-10359-2010).
- 62 C. R. Flechard, D. Fowler, M. A. Sutton and J. N. Cape, A dynamic chemical model of bi-directional ammonia exchange between semi-natural vegetation and the atmosphere, *Q. J. R. Meteorol. Soc.*, 1999, **125**, 2611–2641, DOI: [10.1002/qj.49712555914](https://doi.org/10.1002/qj.49712555914).
- 63 D. Fowler, K. Pilegaard, M. A. Sutton, P. Ambus, M. Raivonen, J. Duyzer, *et al.*, Atmospheric composition change: Ecosystems–Atmosphere interactions, *Atmos. Environ.*, 2009, **43**, 5193–5267, DOI: [10.1016/j.atmosenv.2009.07.068](https://doi.org/10.1016/j.atmosenv.2009.07.068).
- 64 J. J. Finnigan and S. E. Belcher, Flow over a hill covered with a plant canopy, *Q. J. R. Meteorol. Soc.*, 2004, **130**, 1–29, DOI: [10.1256/qj.02.177](https://doi.org/10.1256/qj.02.177).
- 65 C. Feigenwinter, C. Bernhofer, U. Eichelmann, B. Heinesch, M. Hertel, D. Janous, *et al.*, Comparison of horizontal and vertical advective CO<sub>2</sub> fluxes at three forest sites, *Agric. For. Meteorol.*, 2008, **148**, 12–24, DOI: [10.1016/j.agrformet.2007.08.013](https://doi.org/10.1016/j.agrformet.2007.08.013).
- 66 J. Mann, N. Angelou, J. Arnqvist, D. Callies, E. Cantero, R. C. Arroyo, *et al.*, Complex terrain experiments in the New European Wind Atlas, *Philos. Trans. R. Soc., A*, 2017, **375**, 20160101, DOI: [10.1098/rsta.2016.0101](https://doi.org/10.1098/rsta.2016.0101).
- 67 R. Engelmann, U. Wandinger, A. Ansmann, D. Müller, E. Žeromskis, D. Althausen, *et al.*, Lidar Observations of the Vertical Aerosol Flux in the Planetary Boundary Layer, *J. Atmos. Ocean. Technol.*, 2008, **25**, 1296–1306, DOI: [10.1175/2007jtecha967.1](https://doi.org/10.1175/2007jtecha967.1).
- 68 L. Järvi, L. A. Arboledas, R. Engelmann, H. Baars, A. Apituley, O. Makes, E. O'Connor, A. Manninen and V. Zdimal, *Deliverable D12.6: Final report on the comparison and suitability of the different techniques to measure the aerosol particle fluxes at the ACTRIS-2 sites*, 2019, available from: <https://ec.europa.eu/research/participants/documents/downloadPublic?documentIds=080166e5c4f35196&appId=PPGMS>.
- 69 X. Wang, G. Dai, S. Wu, K. Sun, X. Song, W. Chen, *et al.*, Retrieval and Calculation of Vertical Aerosol Mass Fluxes by a Coherent Doppler Lidar and a Sun Photometer, *Remote Sens.*, 2021, **13**, 3259, DOI: [10.3390/rs13163259](https://doi.org/10.3390/rs13163259).
- 70 F. Chiaravallotti, L. Brocca, A. Procopio, C. Massari and S. Gabriele, Assessment of GPM and SM2RAIN-ASCAT rainfall products over complex terrain in southern Italy, *Atmos. Res.*, 2018, **206**, 64–74, DOI: [10.1016/j.atmosres.2018.02.019](https://doi.org/10.1016/j.atmosres.2018.02.019).
- 71 H. W. Lean, J. F. Barlow and C. H. Halios, The impact of spin-up and resolution on the representation of a clear convective boundary layer over London in order 100 m grid-length versions of the Met Office Unified Model, *Q. J. R. Meteorol. Soc.*, 2019, **145**, 1674–1689, DOI: [10.1002/qj.3519](https://doi.org/10.1002/qj.3519).
- 72 C. Liu, R. P. Allan, M. Brooks and S. Milton, Comparing Tropical Precipitation Simulated by the Met Office NWP and Climate Models with Satellite Observations, *J. Appl. Meteorol. Climatol.*, 2014, **53**, 200–214, DOI: [10.1175/JAMC-D-13-082.1](https://doi.org/10.1175/JAMC-D-13-082.1).
- 73 Y. S. Tang, C. F. Braban, U. Dragosits, A. J. Dore, I. Simmons, N. van Dijk, *et al.*, Drivers for spatial, temporal and long-term trends in atmospheric ammonia and ammonium in the UK, *Atmos. Chem. Phys.*, 2018, **18**, 705–733, DOI: [10.5194/acp-18-705-2018](https://doi.org/10.5194/acp-18-705-2018).
- 74 D. Fowler, P. Brimblecombe, J. Burrows, M. R. Heal, P. Grennfelt, D. S. Stevenson, *et al.*, A chronology of global air quality, *Philos. Trans. R. Soc., A*, 2020, **378**, 20190314, DOI: [10.1098/rsta.2019.0314](https://doi.org/10.1098/rsta.2019.0314).
- 75 J. Feng, R. Vet, A. Cole, L. Zhang, I. Cheng, J. O'Brien, *et al.*, Inorganic chemical components in precipitation in the eastern U.S. and Eastern Canada during 1989–2016: temporal and regional trends of wet concentration and wet deposition from the NADP and CAPMoN



- measurements, *Atmos. Environ.*, 2021, **254**, 118367, DOI: [10.1016/j.atmosenv.2021.118367](https://doi.org/10.1016/j.atmosenv.2021.118367).
- 76 Y. S. Tang, C. R. Flechard, U. Dämmgen, S. Vidic, V. Djuricic, M. Mitosinkova, *et al.*, Pan-European rural monitoring network shows dominance of NH<sub>3</sub> gas and NH<sub>4</sub>NO<sub>3</sub> aerosol in inorganic atmospheric pollution load, *Atmos. Chem. Phys.*, 2021, **21**, 875–914, DOI: [10.5194/acp-21-875-2021](https://doi.org/10.5194/acp-21-875-2021).
- 77 E. D. Palmes and R. H. Lindenboom, Ohm's law, Fick's law, and diffusion samplers for gases, *Anal. Chem.*, 1979, **51**, 2400–2401, DOI: [10.1021/ac50050a026](https://doi.org/10.1021/ac50050a026).
- 78 M. Ferm and H. Rodhe, *J. Atmos. Chem.*, 1997, **27**, 17–29, DOI: [10.1023/A:1005816621522](https://doi.org/10.1023/A:1005816621522).
- 79 Y. S. Tang, J. N. Cape and M. A. Sutton, Development and Types of Passive Samplers for Monitoring Atmospheric NO<sub>2</sub> and NH<sub>3</sub> Concentrations, *Sci. World J.*, 2001, **1**, 513–529, DOI: [10.1100/tsw.2001.82](https://doi.org/10.1100/tsw.2001.82).
- 80 C. F. Braban, F. de Bree, S. Crunaire, M. Fröhlich, A. Fromage-Mariette, E. Goelen, T. Hafkenscheid, M. Hangartner, C. van Hoek, N. A. Martin, B. Michen, E. Noordijk, J. M. Stoll, M. M. Twigg, Y. S. Tang, N. Cowan and J. Poskitt, *Literature review on the performance of diffusive samplers for the measurement of ammonia in ambient air and emissions to air*, Edinburgh, Centre for Ecology & Hydrology, 2018, p. 85 (CEH Project no. C05204, C05967, C04544, C05952, C06942).
- 81 C. R. Flechard, E. Nemitz, R. I. Smith, D. Fowler, A. T. Vermeulen, A. Bleeker, *et al.*, Dry deposition of reactive nitrogen to European ecosystems: a comparison of inferential models across the NitroEurope network, *Atmos. Chem. Phys.*, 2011, **11**, 2703–2728, DOI: [10.5194/acp-11-2703-2011](https://doi.org/10.5194/acp-11-2703-2011).
- 82 M. D. Castillo, J. Wagner, G. S. Casuccio, R. R. West, F. R. Freedman, H. M. Eisl, *et al.*, Field testing a low-cost passive aerosol sampler for long-term measurement of ambient PM<sub>2.5</sub> concentrations and particle composition, *Atmos. Environ.*, 2019, **216**, 116905, DOI: [10.1016/j.atmosenv.2019.116905](https://doi.org/10.1016/j.atmosenv.2019.116905).
- 83 T. L. Sparks and J. Wagner, Composition of particulate matter during a wildfire smoke episode in an urban area, *Aerosol Sci. Technol.*, 2021, **55**, 734–747, DOI: [10.1080/02786826.2021.1895429](https://doi.org/10.1080/02786826.2021.1895429).
- 84 A. Comerón, C. Muñoz-Porcar, F. Rocadenbosch, A. Rodríguez-Gómez and M. Sicard, Current Research in Lidar Technology Used for the Remote Sensing of Atmospheric Aerosols, *Sensors*, 2017, **17**(6), 1450, DOI: [10.3390/s17061450](https://doi.org/10.3390/s17061450).
- 85 O. Dubovik, Z. Li, M. I. Mishchenko, D. Tanré, Y. Karol, B. Bojkov, *et al.*, Polarimetric remote sensing of atmospheric aerosols: Instruments, methodologies, results, and perspectives, *J. Quant. Spectrosc. Radiat. Transfer*, 2019, **224**, 474–511, DOI: [10.1016/j.jqsrt.2018.11.024](https://doi.org/10.1016/j.jqsrt.2018.11.024).
- 86 T. I. A. N. Xiao-Min, L. Dong, X. U. Ji-Wei, W. A. N. G. Zhen-Zhu, W. A. N. G. Bang-Xin, W. U. De-Cheng, Z. H. O. N. G. Zhi-Qing, X. I. E. Chen-Bo and W. A. N. G. Ying-Jian, Review of lidar technology for atmosphere monitoring, *J. Atmos. Environ. Opt.*, 2018, **13**(5), 321.
- 87 P. Chazette, P. Couvert, H. Randriamiarisoa, J. Sanak, B. Bonsang, P. Moral, *et al.*, Three-dimensional survey of pollution during winter in French Alps valleys, *Atmos. Environ.*, 2005, **39**, 1035–1047, DOI: [10.1016/j.atmosenv.2004.10.014](https://doi.org/10.1016/j.atmosenv.2004.10.014).
- 88 J. N. Cape, R. I. Smith, D. Fowler, K. Beswick and T. Choularton, Long-term trends in rain and cloud chemistry in a region of complex topography, *Atmos. Res.*, 2015, **153**, 335–347, DOI: [10.1016/j.atmosres.2014.09.003](https://doi.org/10.1016/j.atmosres.2014.09.003).
- 89 V. A. Mohnen and R. J. Vong, A climatology of cloud chemistry for the eastern United States derived from the mountain cloud chemistry project, *Environ. Rev.*, 1993, **1**, 38–54, DOI: [10.1139/a93-005](https://doi.org/10.1139/a93-005).
- 90 M. Błaś, M. Sobik and R. Twarowski, Changes of cloud water chemical composition in the Western Sudety Mountains, Poland, *Atmos. Res.*, 2008, **87**, 224–231, DOI: [10.1016/j.atmosres.2007.11.00](https://doi.org/10.1016/j.atmosres.2007.11.00).
- 91 K. M. Beswick, K. J. Hargreaves, M. W. Gallagher, T. W. Choularton and D. Fowler, Size-resolved measurements of cloud droplet deposition velocity to a forest canopy using an eddy correlation technique, *Q. J. R. Meteorol. Soc.*, 1991, **117**, 623–645, DOI: [10.1002/qj.49711749910](https://doi.org/10.1002/qj.49711749910).
- 92 D. Fowler, R. Mourné and D. Branford, The application of 210Pb inventories in soil to measure long-term average wet deposition of pollutants in complex terrain, *Water, Air, Soil Pollut.*, 1995, **85**, 2113–2118, DOI: [10.1007/BF01186146](https://doi.org/10.1007/BF01186146).
- 93 S. V. Hering, D. L. Blumenthal, R. L. Brewer, G. Alan, M. Hoffmann, J. A. Kadlec, *et al.*, Field intercomparison of five types of fog water collectors, *Environ. Sci. Technol.*, 1987, **21**, 654–663, DOI: [10.1021/es00161a006](https://doi.org/10.1021/es00161a006).
- 94 S. L. Isil, T. Gebhart, K. Rogers and C. A. Wanta, Magnitude and Trends of High-elevation Cloud Water Pollutant Concentrations and Modeled Deposition Fluxes, *J. Environ. Sci. Eng. B*, 2017, **6**, 127–143, DOI: [10.17265/2162-5263/2017.03.003](https://doi.org/10.17265/2162-5263/2017.03.003).
- 95 E. M. Elliott, Z. Yu, A. S. Cole and J. G. Coughlin, Isotopic advances in understanding reactive nitrogen deposition and atmospheric processing, *Sci. Total Environ.*, 2019, **662**, 393–403, DOI: [10.1016/j.scitotenv.2018.12.177](https://doi.org/10.1016/j.scitotenv.2018.12.177).
- 96 I. Bourgeois, J. Savarino, J. Némery, N. Caillon, S. Albertin, F. Delbart, *et al.*, Atmospheric nitrate export in streams along a montane to urban gradient, *Sci. Total Environ.*, 2018, **633**, 329–340, DOI: [10.1016/j.scitotenv.2018.03.141](https://doi.org/10.1016/j.scitotenv.2018.03.141).
- 97 U. Tsunogai, T. Miyauchi, T. Ohyama, D. D. Komatsu, F. Nakagawa, Y. Obata, *et al.*, Accurate and precise quantification of atmospheric nitrate in streams draining land of various uses by using triple oxygen isotopes as tracers, *Biogeosciences*, 2016, **13**, 3441–3459, DOI: [10.5194/bg-13-3441-2016](https://doi.org/10.5194/bg-13-3441-2016).
- 98 A. S. Likuku, Wet deposition of 210 Pb aerosols over two areas of contrasting topography, *Environ. Res. Lett.*, 2006, **1**, 014007, DOI: [10.1088/1748-9326/1/1/014007](https://doi.org/10.1088/1748-9326/1/1/014007).



- 99 D. Branford, D. Fowler and M. V. Moghaddam, Study of Aerosol Deposition at a Wind Exposed Forest Edge Using  $^{210}\text{Pb}$  and  $^{137}\text{Cs}$  Soil Inventories, *Water, Air, Soil Pollut.*, 2004, **157**, 107–116, DOI: [10.1023/B:WATE.0000038879.99600.69](https://doi.org/10.1023/B:WATE.0000038879.99600.69).
- 100 D. Fowler, R. I. Smith, I. D. Leith, A. Crossley, R. W. Mourne, D. W. Branford, *et al.*, *Water, Air, Soil Pollut.*, 1998, **105**, 459–470, DOI: [10.1023/A:1005043829181](https://doi.org/10.1023/A:1005043829181).
- 101 R. Mourne, Lead-210 as a tracer for acidic deposition in areas of complex topography, PhD Thesis, Univ. of Edinburgh, 1993.
- 102 M. V. Moghaddam, Study of surface roughness effects on deposition of atmospheric aerosols using  $^{210}\text{Pb}$  soil inventories, PhD Thesis, Univ. of Edinburgh, 1998.
- 103 F. Choubedar, Use of radio-nuclides (unsupported  $^{210}\text{Pb}$ ,  $^7\text{Be}$  and  $^{137}\text{Cs}$ ) in air, rain and undisturbed soil as environmental tools, PhD Thesis, Univ. of Edinburgh, 2000.
- 104 S. A. Likuku, The influence of topography and vegetation canopy on the deposition of atmospheric particulates studied with  $^{210}\text{Pb}$  and  $^{137}\text{Cs}$  in soil inventory measurements, PhD Thesis, Univ. of Edinburgh, 2003.
- 105 C. E. R. Pitcairn, I. D. Leith, D. Fowler, K. J. Hargreaves, M. Moghaddam, V. H. Kennedy, *et al.*, Foliar Nitrogen as an Indicator of Nitrogen Deposition and Critical Loads Exceedance on a European Scale in, *Acid rain 2000*, Springer Netherlands, 2001, pp. 1037–1042, available from: DOI: [10.1007/978-94-007-0810-5\\_20](https://doi.org/10.1007/978-94-007-0810-5_20).
- 106 C. Pitcairn, D. Fowler, I. Leith, L. Sheppard, S. Tang, M. Sutton, *et al.*, Diagnostic indicators of elevated nitrogen deposition, *Environ. Pollut.*, 2006, **144**, 941–950, DOI: [10.1016/j.envpol.2006.01.049](https://doi.org/10.1016/j.envpol.2006.01.049).
- 107 S. Jovan, M. E. Fenn, M. Buhler, A. Bytnerowicz, A. Kovasi, M. Hutten, *et al.*, Challenges characterizing N deposition to high elevation protected areas: a case study integrating instrument, simulated, and lichen inventory datasets for the Devils Postpile National Monument and surrounding region, USA, *Ecol. Indic.*, 2021, **122**, 107311, DOI: [10.1016/j.ecolind.2020.107311](https://doi.org/10.1016/j.ecolind.2020.107311).
- 108 J. G. Farmer, M. C. Graham, J. R. Bacon, S. M. Dunn, S. I. Vinogradoff and A. B. MacKenzie, Isotopic characterisation of the historical lead deposition record at Glensaugh, an organic-rich, upland catchment in rural N.E. Scotland, *Sci. Total Environ.*, 2005, **346**, 121–137, DOI: [10.1016/j.scitotenv.2004.11.020](https://doi.org/10.1016/j.scitotenv.2004.11.020).
- 109 J. J. C. Dawson, D. Tetzlaff, A. M. Carey, A. Raab, C. Soulsby, K. Killham, *et al.*, Characterizing Pb Mobilization from Upland Soils to Streams Using  $^{206}\text{Pb}/^{207}\text{Pb}$  Isotopic Ratios, *Environ. Sci. Technol.*, 2009, **44**, 243–249, DOI: [10.1021/es902664d](https://doi.org/10.1021/es902664d).
- 110 D. N. Lipatov, A. I. Shcheglov and D. V. Manakhov, Spatial Distribution of Heavy Metals and  $^{137}\text{Cs}$  in Spruce Forest Soil under Conditions of Regional Pollution, *Russ. J. Ecol.*, 2018, **49**, 312–319, DOI: [10.1134/s1067413618040100](https://doi.org/10.1134/s1067413618040100).
- 111 Z. Zhong, H. Bing, Z. Xiang, Y. Wu, J. Zhou and S. Ding, Terrain-modulated deposition of atmospheric lead in the soils of alpine forest, central China, *Sci. Total Environ.*, 2021, **790**, 148106, DOI: [10.1016/j.scitotenv.2021.148106](https://doi.org/10.1016/j.scitotenv.2021.148106).
- 112 G. M. Lovett and S. E. Lindberg, Dry deposition of nitrate to a deciduous forest, *Biogeochemistry*, 1986, **2**, 137–148, DOI: [10.1007/BF02180191](https://doi.org/10.1007/BF02180191).
- 113 C. S. Potter, H. L. Ragsdale and W. T. Swank, Atmospheric Deposition and Foliar Leaching in a Regenerating Southern Appalachian Forest Canopy, *J. Ecol.*, 1991, **79**, 97, DOI: [10.2307/2260786](https://doi.org/10.2307/2260786).
- 114 M. A. Sutton, J. K. Schjørring and G. P. Wyers, Plant–atmosphere exchange of ammonia, *Philos. Trans. R. Soc., A*, 1995, **351**, 261–278, DOI: [10.1098/rsta.1995.0033](https://doi.org/10.1098/rsta.1995.0033).
- 115 J. Burkhardt, Microscopic processes governing the deposition of trace gases and particles to vegetation surfaces, *Stud. Environ. Sci.*, 1995, 139–148, DOI: [10.1016/S0166-1116\(06\)80280-3](https://doi.org/10.1016/S0166-1116(06)80280-3).
- 116 G. P. J. Draaijers, R. Van Ek and W. Bleuten, Atmospheric deposition in complex forest landscapes, *Bound.-Layer Meteorol.*, 1994, **69**, 343–366, DOI: [10.1007/BF00718124](https://doi.org/10.1007/BF00718124).
- 117 P. H. Schuepp, D. N. McGerrigle, H. G. Leighton, G. Paquette, R. S. Schemenauer and S. Kermasha, Observations on Wet and Dry Deposition to Foliage at a High Elevation Site, *Acid Deposition at High Elevation Sites*, Springer Netherlands, 1988, p. 615–637, available from: DOI: [10.1007/978-94-009-3079-7\\_38](https://doi.org/10.1007/978-94-009-3079-7_38).
- 118 A. Avila, L. Aguilhaume, S. Izquieta-Rojano, H. García-Gómez, D. Elustondo, J. M. Santamaría, *et al.*, Quantitative study on nitrogen deposition and canopy retention in Mediterranean evergreen forests, *Environ. Sci. Pollut. Res.*, 2017, **24**, 26213–26226, DOI: [10.1007/s11356-017-8861-4](https://doi.org/10.1007/s11356-017-8861-4).
- 119 L. Aguilhaume, S. Izquieta-Rojano, H. García-Gómez, D. Elustondo, J. M. Santamaría, R. Alonso, *et al.*, Dry deposition and canopy uptake in Mediterranean holm-oak forests estimated with a canopy budget model: a focus on N estimations, *Atmos. Environ.*, 2017, **152**, 191–200, DOI: [10.1016/j.atmosenv.2016.12.038](https://doi.org/10.1016/j.atmosenv.2016.12.038).
- 120 W. Dai, C. I. Davidson, V. Etymezian and M. Zufall, Wind Tunnel Studies of Particle Transport and Deposition in Turbulent Boundary Flows, *Aerosol Sci. Technol.*, 2001, **35**, 887–898, DOI: [10.1080/02786820126851](https://doi.org/10.1080/02786820126851).
- 121 J. M. Zufall, W. I. Dai and C. Davidson, Dry deposition of particles to wave surfaces: II. Wind tunnel experiments, *Atmos. Environ.*, 1999, **33**, 4283–4290, DOI: [10.1016/S1352-2310\(99\)00178-8](https://doi.org/10.1016/S1352-2310(99)00178-8).
- 122 T. A. Price, R. Stoll, J. M. Veranth and E. R. Pardyjak, A wind-tunnel study of the effect of turbulence on PM10 deposition onto vegetation, *Atmos. Environ.*, 2017, **159**, 117–125, DOI: [10.1016/j.atmosenv.2017.03.043](https://doi.org/10.1016/j.atmosenv.2017.03.043).
- 123 P. Rouspard, M. Amielh, D. Maro, A. Coppalle, H. Branger, O. Connan, *et al.*, Measurement in a wind tunnel of dry deposition velocities of submicron aerosol with associated turbulence onto rough and smooth urban surfaces, *J. Aerosol Sci.*, 2013, **55**, 12–24, DOI: [10.1016/j.jaerosci.2012.07.006](https://doi.org/10.1016/j.jaerosci.2012.07.006).
- 124 T. Ishihara, K. Hibi and S. Oikawa, A wind tunnel study of turbulent flow over a three-dimensional steep hill, *J. Wind. Eng. Ind. Aerodyn.*, 1999, **83**, 95–107, DOI: [10.1016/S0167-6105\(99\)00064-1](https://doi.org/10.1016/S0167-6105(99)00064-1).



- 125 S. T. Parker and R. P. Kinnersley, A computational and wind tunnel study of particle dry deposition in complex topography, *Atmos. Environ.*, 2004, **38**, 3867–3878, DOI: [10.1016/j.atmosenv.2004.03.046](https://doi.org/10.1016/j.atmosenv.2004.03.046).
- 126 S. T. Salesky, M. G. Giometto, M. Chamecki, M. Lehning and M. B. Parlange, The transport and deposition of heavy particles in complex terrain: insights from an Eulerian model for large eddy simulation, arXiv, 2019, available from: <https://arxiv.org/abs/1903.03521>.
- 127 M. L. Wesely, Parameterization of surface resistances to gaseous dry deposition in regional-scale numerical models, *Atmos. Environ.*, 1989, **23**, 1293–1304, DOI: [10.1016/0004-6981\(89\)90153-4](https://doi.org/10.1016/0004-6981(89)90153-4).
- 128 B. B. Hicks and T. P. Meyers, Measuring and Modelling Dry Deposition in Mountainous Areas, *Acid Deposition at High Elevation Sites*, Springer Netherlands, 1988, pp. 541–552, available from: DOI: [10.1007/978-94-009-3079-7\\_32](https://doi.org/10.1007/978-94-009-3079-7_32).
- 129 B. B. Hicks, On Estimating Dry Deposition Rates in Complex Terrain, *J. Appl. Meteorol. Climatol.*, 2008, **47**, 1651–1658, DOI: [10.1175/2006JAMC1412.1](https://doi.org/10.1175/2006JAMC1412.1).
- 130 L. Giovannini, E. Ferrero, T. Karl, M. W. Rotach, C. Staquet, S. Trini Castelli, *et al.*, Atmospheric Pollutant Dispersion over Complex Terrain: Challenges and Needs for Improving Air Quality Measurements and Modeling, *Atmosphere*, 2020, **11**, 646, DOI: [10.3390/atmos11060646](https://doi.org/10.3390/atmos11060646).
- 131 W. Ruijgrok, H. Tieben and P. Eisinga, The dry deposition of particles to a forest canopy: a comparison of model and experimental results, *Atmos. Environ.*, 1997, **31**, 399–415, DOI: [10.1016/S1352-2310\(96\)00089-1](https://doi.org/10.1016/S1352-2310(96)00089-1).
- 132 H. Sievering, T. Tomaszewski and J. Torizzo, Canopy uptake of atmospheric N deposition at a conifer forest: part I -canopy N budget, photosynthetic efficiency and net ecosystem exchange, *Tellus B*, 2007, **59**, 483–492, DOI: [10.1111/j.1600-0889.2007.00264.x](https://doi.org/10.1111/j.1600-0889.2007.00264.x).
- 133 A. Petroff, A. Mailliat, M. Amielh and F. Anselmet, Aerosol dry deposition on vegetative canopies. Part II: A new modelling approach and applications, *Atmos. Environ.*, 2008, **42**, 3654–3683, DOI: [10.1016/j.atmosenv.2007.12.060](https://doi.org/10.1016/j.atmosenv.2007.12.060).
- 134 E. Nemitz, M. A. Sutton, J. K. Schjoerring, S. Husted and G. Paul Wyers, Resistance modelling of ammonia exchange over oilseed rape, *Agric. For. Meteorol.*, 2000, **105**, 405–425, DOI: [10.1016/S0168-1923\(00\)00206-9](https://doi.org/10.1016/S0168-1923(00)00206-9).
- 135 R. T. McMillen, *Estimating the spatial variability of trace-gas deposition velocities*, Technical Memo, United States, 1990, available from: <https://repository.library.noaa.gov/view/noaa/19718>.
- 136 C. M. Rogers, T. F. Lavery, M. O. Stewart, W. R. Barnard and H. K. Howell, CASTNET Methodology for Modeling Dry and Total Deposition, *Air Pollution Modeling and its Application XXIII*, Springer International Publishing, 2014, pp. 49–53, available from: DOI: [10.1007/978-3-319-04379-1\\_8](https://doi.org/10.1007/978-3-319-04379-1_8).
- 137 J. R. Brook, F. Di-Giovanni, S. Cakmak and T. P. Meyers, Estimation of dry deposition velocity using inferential models and site-specific meteorology—uncertainty due to siting of meteorological towers, *Atmos. Environ.*, 1997, **31**, 3911–3919, DOI: [10.1016/S1352-2310\(97\)00247-1](https://doi.org/10.1016/S1352-2310(97)00247-1).
- 138 T. M. Thompson, M. A. Rodriguez, M. G. Barna, K. A. Gebhart, J. L. Hand, D. E. Day, *et al.*, Rocky Mountain National Park reduced nitrogen source apportionment, *J. Geophys. Res.: Atmos.*, 2015, **120**, 4370–4384, DOI: [10.1002/2014JD022675](https://doi.org/10.1002/2014JD022675).
- 139 R. Zhang, T. M. Thompson, M. G. Barna, J. L. Hand, J. A. McMurray, M. D. Bell, *et al.*, Source regions contributing to excess reactive nitrogen deposition in the Greater Yellowstone Area (GYA) of the United States, *Atmos. Chem. Phys.*, 2018, **18**, 12991–13011, DOI: [10.5194/acp-18-12991-2018](https://doi.org/10.5194/acp-18-12991-2018).
- 140 S. Aksoyoglu and A. S. H. Prévôt, Modelling nitrogen deposition: dry deposition velocities on various land-use types in Switzerland, *Int. J. Environ. Pollut.*, 2018, **64**, 230, DOI: [10.1504/IJEP.2018.099159](https://doi.org/10.1504/IJEP.2018.099159).
- 141 C. Viatte, T. Lauvaux, J. K. Hedelius, H. Parker, J. Chen, T. Jones, *et al.*, Methane emissions from dairies in the Los Angeles Basin, *Atmos. Chem. Phys.*, 2017, **17**, 7509–7528, DOI: [10.5194/acp-17-7509-2017](https://doi.org/10.5194/acp-17-7509-2017).
- 142 D. Sirithian and S. Thepanondh, Influence of Grid Resolution in Modeling of Air Pollution from Open Burning, *Atmosphere*, 2016, **7**, 93, DOI: [10.3390/atmos7070093](https://doi.org/10.3390/atmos7070093).
- 143 J. Tan, Y. Zhang, W. Ma, Q. Yu, J. Wang and L. Chen, Impact of spatial resolution on air quality simulation: a case study in a highly industrialized area in Shanghai, China, *Atmos. Pollut. Res.*, 2015, **6**, 322–333, DOI: [10.5094/APR.2015.036](https://doi.org/10.5094/APR.2015.036).
- 144 F. Garcia-Menendez, A. Yano, Y. Hu and M. Talat Odman, An adaptive grid version of CMAQ for improving the resolution of plumes, *Atmos. Pollut. Res.*, 2010, **1**, 239–249, DOI: [10.5094/APR.2010.031](https://doi.org/10.5094/APR.2010.031).
- 145 K. W. Appel, J. O. Bash, K. M. Fahey, K. M. Foley, R. C. Gilliam, C. Hogrefe, *et al.*, *The Community Multiscale Air Quality (CMAQ) Model Versions 5.3 and 5.3.1: System Updates and Evaluation*, Copernicus GmbH, 2020, available from: DOI: [10.5194/gmd-2020-345](https://doi.org/10.5194/gmd-2020-345).
- 146 S. Reis, T. Liška, M. Vieno, E. J. Carnell, R. Beck, T. Clemens, *et al.*, The influence of residential and workday population mobility on exposure to air pollution in the UK, *Environ. Int.*, 2018, **121**, 803–813, DOI: [10.1016/j.envint.2018.10.005](https://doi.org/10.1016/j.envint.2018.10.005).
- 147 N. Azouz, J. L. Drouet, M. Beekmann, G. Siour, R. Wichink Kruit and P. Cellier, Comparison of spatial patterns of ammonia concentration and dry deposition flux between a regional Eulerian chemistry-transport model and a local Gaussian plume model, *Air Qual., Atmos. Health*, 2019, **12**, 719–729, DOI: [10.1007/s11869-019-00691-y](https://doi.org/10.1007/s11869-019-00691-y).
- 148 N. Azouz, M. Beekmann, G. Siour, P. Cellier and J. L. Drouet, Changes in spatial patterns of ammonia dry deposition flux and deposition threshold exceedance according to dispersion model formalism and horizontal resolution, *Environ. Pollut.*, 2021, **268**, 115823, DOI: [10.1016/j.envpol.2020.115823](https://doi.org/10.1016/j.envpol.2020.115823).
- 149 A. Jones, D. Thomson, M. Hort and B. Devenish, The U.K. Met Office's Next-Generation Atmospheric Dispersion Model, NAME III, *Air Pollution Modeling and Its*



- Application XVII*, Springer, US, 2007, 5809, available from: DOI: [10.1007/978-0-387-68854-1\\_62](https://doi.org/10.1007/978-0-387-68854-1_62).
- 150 Y. Sanada, G. Katata, N. Kaneyasu, C. Nakanishi, Y. Urabe and Y. Nishizawa, Altitudinal characteristics of atmospheric deposition of aerosols in mountainous regions: Lessons from the Fukushima Daiichi Nuclear Power Station accident, *Sci. Total Environ.*, 2018, **618**, 881–890, DOI: [10.1016/j.scitotenv.2017.08.246](https://doi.org/10.1016/j.scitotenv.2017.08.246).
  - 151 J. S. Scire, D. G. Strimaitis, R. J. Yamartino and X. Zhang, *A user's guide for the CALPUFF dispersion model (Version 5)*, Earth Tech Inc., Concord, 2000, available from: [https://www.src.com/calpuff/download/CALPUFF\\_UsersGuide.pdf](https://www.src.com/calpuff/download/CALPUFF_UsersGuide.pdf).
  - 152 D. Giaiotti, D. Oshurok and O. Skrynyk, The Chernobyl nuclear accident <sup>137</sup>Cs cumulative depositions simulated by means of the CALMET/CALPUFF modelling system, *Atmos. Pollut. Res.*, 2018, **9**, 502–512, DOI: [10.1016/j.apr.2017.11.007](https://doi.org/10.1016/j.apr.2017.11.007).
  - 153 A. S. Rood, P. G. Voillequé, S. K. Rope, H. A. Grogan and J. E. Till, Reconstruction of atmospheric concentrations and deposition of uranium and decay products released from the former uranium mill at Uravan, Colorado, *J. Environ. Radioact.*, 2008, **99**, 1258–1278, DOI: [10.1016/j.jenvrad.2008.03.009](https://doi.org/10.1016/j.jenvrad.2008.03.009).
  - 154 L. Tositti, B. Moroni, E. Dinelli, P. Morozzi, E. Brattich, B. Sebastiani, *et al.*, Deposition processes over complex topographies: experimental data meets atmospheric modeling, *Sci. Total Environ.*, 2020, **744**, 140974, DOI: [10.1016/j.scitotenv.2020.140974](https://doi.org/10.1016/j.scitotenv.2020.140974).
  - 155 N. B. Chang and D. Q. Chang, Long-term risk assessment of possible accidental release of nuclear power plants in complex terrains with respect to synoptic weather patterns, *Front. Earth Sci. China*, 2009, **4**, 205–228, DOI: [10.1007/s11707-010-0001-0](https://doi.org/10.1007/s11707-010-0001-0).
  - 156 B. J. Viner and R. W. Arritt, Small-Scale Circulations Caused by Complex Terrain Affect Pollen Deposition, *Crop Sci.*, 2012, **52**, 904–913, DOI: [10.2135/cropsci2011.07.0354](https://doi.org/10.2135/cropsci2011.07.0354).
  - 157 B. J. Viner, R. W. Arritt and M. E. Westgate, Examination of climatological wind patterns and simulated pollen dispersion in a complex island environment, *Int. J. Biometeorol.*, 2017, **61**, 1481–1492, DOI: [10.1007/s00484-017-1325-1](https://doi.org/10.1007/s00484-017-1325-1).
  - 158 Z. Y. Offer and D. Goossens, Wind tunnel experiments and field measurements of aeolian dust deposition on conical hills, *Geomorphology*, 1995, **14**, 43–56, DOI: [10.1016/0169-555X\(95\)00015-W](https://doi.org/10.1016/0169-555X(95)00015-W).
  - 159 S. T. Parker, An investigation into the effects of complex topography on particle dry deposition, PhD Thesis, School of Geography, Earth and Environmental Sciences, University of Birmingham, 2004.
  - 160 J. Finnigan, K. Ayotte, I. Harman, G. Katul, H. Oldroyd, E. Patton, *et al.*, Boundary-Layer Flow Over Complex Topography, *Bound.-Layer Meteorol.*, 2020, **177**, 247–313, DOI: [10.1007/s10546-020-00564-3](https://doi.org/10.1007/s10546-020-00564-3).
  - 161 S. A. Smith, S. B. Vosper and P. R. Field, Sensitivity of orographic precipitation enhancement to horizontal resolution in the operational Met Office Weather forecasts, *Meteorol. Appl.*, 2012, **22**, 14–24, DOI: [10.1002/met.1352](https://doi.org/10.1002/met.1352).
  - 162 N. M. Roberts, S. J. Cole, R. M. Forbes, R. J. Moore and D. Boswell, Use of high-resolution NWP rainfall and river flow forecasts for advance warning of the Carlisle flood, north-west England, *Meteorol. Appl.*, 2009, **16**, 23–34, DOI: [10.1002/met.94](https://doi.org/10.1002/met.94).
  - 163 T. A. Hill, A. Jones and T. W. Choularton, Modelling Sulphate Deposition Onto Hills By Washout and Turbulence, *Q. J. R. Meteorol. Soc.*, 2007, **113**, 1217–1236, DOI: [10.1002/qj.49711347808](https://doi.org/10.1002/qj.49711347808).
  - 164 D. J. Carruthers and T. W. Choularton, Airflow over hills of moderate slope, *Q. J. R. Meteorol. Soc.*, 1982, **108**, 603–624, DOI: [10.1002/qj.49710845708](https://doi.org/10.1002/qj.49710845708).
  - 165 A. J. Dore, T. W. Choularton, D. Fowler and R. Storton-West, Field measurements of wet deposition in an extended region of complex topography, *Q. J. R. Meteorol. Soc.*, 1990, **116**, 1193–1212, DOI: [10.1002/qj.49711649510](https://doi.org/10.1002/qj.49711649510).
  - 166 M. Blaś, A. J. Dore and M. Sobik, Distribution of precipitation and wet deposition around an Island mountain in South-West Poland, *Q. J. R. Meteorol. Soc.*, 1999, **125**, 253–270, DOI: [10.1002/qj.49712555314](https://doi.org/10.1002/qj.49712555314).
  - 167 A. J. Dore, M. Mousavi-Baygi, R. I. Smith, J. Hall, D. Fowler and T. W. Choularton, A model of annual orographic precipitation and acid deposition and its application to Snowdonia, *Atmos. Environ.*, 2006, **40**, 3316–3326, DOI: [10.1016/j.atmosenv.2006.01.043](https://doi.org/10.1016/j.atmosenv.2006.01.043).
  - 168 J. E. Stout, Y. L. Lin and S. P. S. Arya, A Theoretical investigation of the Effects of Sinusoidal Topography on Particle Deposition, *J. Atmos. Sci.*, 1993, **50**, 2533–2541, DOI: [10.1175/1520-0469\(1993\)050<2533:ATIOTE>2.0.CO;2](https://doi.org/10.1175/1520-0469(1993)050<2533:ATIOTE>2.0.CO;2).
  - 169 G. G. Katul and D. Poggi, The Influence of Hilly Terrain on Aerosol-Sized Particle Deposition into Forested Canopies, *Bound.-Layer Meteorol.*, 2009, **135**, 67–88, DOI: [10.1007/s10546-009-9459-2](https://doi.org/10.1007/s10546-009-9459-2).
  - 170 G. G. Katul and D. Poggi, A note on aerosol sized particle deposition onto dense and tall canopies situated on gentle cosine hills, *Tellus B*, 2011, **63**, 395–400, DOI: [10.1111/j.1600-0889.2011.00528.x](https://doi.org/10.1111/j.1600-0889.2011.00528.x).
  - 171 D. Poggi and G. G. Katul, An experimental investigation of the mean momentum budget inside dense canopies on narrow gentle hilly terrain, *Agric. For. Meteorol.*, 2007, **144**, 1–13, DOI: [10.1016/j.agrformet.2007.01.009](https://doi.org/10.1016/j.agrformet.2007.01.009).
  - 172 D. Poggi and G. G. Katul, Micro- and macro-dispersive fluxes in canopy flows, *Acta Geophys.*, 2008, **56**, 778–799, DOI: [10.2478/s11600-008-0029-7](https://doi.org/10.2478/s11600-008-0029-7).
  - 173 I. N. Harman and J. J. Finnigan, *The SCION conifer wilding analytical models: Overview. CSIRO Oceans and Atmosphere interim report*, 2019, p. 16.
  - 174 I. N. Harman and J. J. Finnigan, *Flow over a gentle Hill covered with a plant canopy: three-dimensional effects and extension to dispersal. CSIRO Oceans and Atmosphere interim report*, 2019, p. 22.
  - 175 I. N. Harman and J. J. Finnigan, *The SCION conifer wilding analytical models: Overview. CSIRO Oceans and Atmosphere interim report*, 2019, p. 16.



- 176 I. N. Harman, J. J. Finnigan and E. G. Patton, *Comparing observations and models of wind over complex forested terrain*, *CSIRO Oceans and Atmosphere*, 2020, p. 26.
- 177 T. Michioka, H. Takimoto, H. Ono and A. Sato, Numerical Simulations of Dry and Wet Deposition over Simplified Terrains, *Asian J. Atmos. Environ.*, 2017, **11**, 270–282, DOI: [10.5572/ajae.2017.11.4.270](https://doi.org/10.5572/ajae.2017.11.4.270).
- 178 D. J. Carruthers, J. C. R. Hunt and W. -S. Weng, A computational model of stratified turbulent airflow over hills—FLOWSTAR I. Proceedings of Envirosoft, in *Computer Techniques in Environmental Studies*, ed. P. Zanetti, Springer-Verlag, New York, NY, 1988, pp. 481–492.
- 179 P. S. Jackson and J. C. R. Hunt, Turbulent wind flow over a low hill, *Q. J. R. Meteorol. Soc.*, 1975, **101**, 929–955, DOI: [10.1002/qj.49710143015](https://doi.org/10.1002/qj.49710143015).
- 180 J. C. R. Hunt, S. Leibovich and K. J. Richards, Turbulent shear flows over low hills, *Q. J. R. Meteorol. Soc.*, 1988, **114**, 1435–1470, DOI: [10.1002/qj.49711448405](https://doi.org/10.1002/qj.49711448405).
- 181 H. Coe, T. W. Choularton, D. J. Carruthers, M. W. Gallagher and K. N. Bower, A model of occult deposition applicable to complex terrain, *Q. J. R. Meteorol. Soc.*, 1991, **117**, 803–823, DOI: [10.1002/qj.49711750008](https://doi.org/10.1002/qj.49711750008).
- 182 G. Ahmadi and A. Li, Computer simulation of particle transport and deposition near a small isolated building, *J. Wind. Eng. Ind. Aerodyn.*, 2000, **84**, 23–46, DOI: [10.1016/S0167-6105\(99\)00048-3](https://doi.org/10.1016/S0167-6105(99)00048-3).
- 183 R. W. Arritt, A Numerical Modeling Technique for Estimating Sulfur Dioxide Dry Deposition Due to Local Source Emissions, *J. Air Waste Manage. Assoc.*, 1991, **41**, 1341–1347, DOI: [10.1080/10473289.1991.10466931](https://doi.org/10.1080/10473289.1991.10466931).
- 184 B. Blocken, A. van der Hout, J. Dekker and O. Weiler, CFD simulation of wind flow over natural complex terrain: case study with validation by field measurements for Ria de Ferrol, Galicia, Spain, *J. Wind. Eng. Ind. Aerodyn.*, 2015, **147**, 43–57, DOI: [10.1016/j.jweia.2015.09.007](https://doi.org/10.1016/j.jweia.2015.09.007).
- 185 N. Wood, Wind Flow Over Complex Terrain: A Historical Perspective and the Prospect for Large-Eddy Modelling, *Bound.-Layer Meteorol.*, 2000, **96**, 11–32, DOI: [10.1023/A:1002017732694](https://doi.org/10.1023/A:1002017732694).
- 186 M. d. A. S. Bhuiyan and J. M. Alam, Scale-adaptive turbulence modeling for LES over complex terrain, *Eng. Comput.*, 2020, **38**, 1995–2007, DOI: [10.1007/s00366-020-01190-w](https://doi.org/10.1007/s00366-020-01190-w).
- 187 Z. Liu, S. Cao, H. Liu and T. Ishihara, Large-Eddy Simulations of the Flow Over an Isolated Three-Dimensional Hill, *Bound.-Layer Meteorol.*, 2018, **170**, 415–441, DOI: [10.1007/s10546-018-0410-2](https://doi.org/10.1007/s10546-018-0410-2).
- 188 Q. Yang, T. Zhou, B. Yan, P. Van Phuc and W. Hu, LES study of turbulent flow fields over hilly terrains—Comparisons of inflow turbulence generation methods and SGS models, *J. Wind. Eng. Ind. Aerodyn.*, 2020, **204**, 104230, DOI: [10.1016/j.jweia.2020.104230](https://doi.org/10.1016/j.jweia.2020.104230).
- 189 R. Buccolieri, J. L. Santiago, E. Rivas and B. Sanchez, Review on urban tree modelling in CFD simulations: aerodynamic, deposition and thermal effects, *Urban Forestry and Urban Greening*, 2018, **31**, 212–220, DOI: [10.1016/j.ufug.2018.03.003](https://doi.org/10.1016/j.ufug.2018.03.003).
- 190 C. Daly, M. Halbleib, J. I. Smith, W. P. Gibson, M. K. Doggett, G. H. Taylor, *et al.*, Physiographically sensitive mapping of climatological temperature and precipitation across the conterminous United States, *Int. J. Climatol.*, 2008, **28**, 2031–2064, DOI: [10.1002/joc.1688](https://doi.org/10.1002/joc.1688).
- 191 N. E. Latysh and G. A. Wetherbee, Improved mapping of National Atmospheric Deposition Program wet-deposition in complex terrain using PRISM-gridded data sets, *Environ. Monit. Assess.*, 2011, **184**, 913–928, DOI: [10.1007/s10661-011-2009-7](https://doi.org/10.1007/s10661-011-2009-7).
- 192 A. J. Dore, T. W. Choularton and D. Fowler, An improved wet deposition map of the United Kingdom incorporating the seeder—feeder effect over mountainous terrain, *Atmos. Environ., Part A*, 1992, **26**, 1375–1381, DOI: [10.1016/0960-1686\(92\)90122-2](https://doi.org/10.1016/0960-1686(92)90122-2).
- 193 A. J. Dore, M. Sobik and K. Migala, Patterns of precipitation and pollutant deposition in the western Sudete mountains, Poland, *Atmos. Environ.*, 1999, **33**, 3301–3312, DOI: [10.1016/S1352-2310\(98\)00294-5](https://doi.org/10.1016/S1352-2310(98)00294-5).
- 194 A. Argyraki, R. P. Kinnersley and M. H. Ramsey, *Optimising emergency sampling strategy following a release of radioactive material into the environment*, MAFF Research Contract No. RP 0249, 1999.
- 195 B. B. Hicks, On Estimating Dry Deposition Rates in Complex Terrain, *J. Appl. Meteorol. Climatol.*, 2008, **47**, 1651–1658, DOI: [10.1175/2006JAMC1412.1](https://doi.org/10.1175/2006JAMC1412.1).
- 196 K. C. Weathers, S. M. Simkin, G. M. Lovett and S. E. Lindberg, Empirical modelling of atmospheric deposition in mountainous landscapes, *Ecol. Appl.*, 2006, **16**, 1590–1607, DOI: [10.1890/1051-0761\(2006\)016\[1590:EMOADI\]2.0.CO;2](https://doi.org/10.1890/1051-0761(2006)016[1590:EMOADI]2.0.CO;2).
- 197 K. B. Benedict, C. M. Carrico, S. M. Kreidenweis, B. Schichtel, W. C. Malm and J. L. Collett Jr, A seasonal nitrogen deposition budget for Rocky Mountain National Park, *Ecol. Appl.*, 2013, **23**, 1156–1169, DOI: [10.1890/12-1624.1](https://doi.org/10.1890/12-1624.1).
- 198 G. P. J. Draaijers, R. van Eek, W. Bleuten and R. Meijers, Measuring and modelling atmospheric dry deposition in complex forest terrain, *Stud. Environ. Sci.*, 1992, 285–294, DOI: [10.1016/S0166-1116\(08\)70123-7](https://doi.org/10.1016/S0166-1116(08)70123-7).
- 199 L. J. Sheppard, I. D. Leith, T. Mizunuma, J. Neil Cape, A. Crossley, S. Leeson, *et al.*, Dry deposition of ammonia gas drives species change faster than wet deposition of ammonium ions: evidence from a long-term field manipulation, *GCB Bioenergy*, 2011, **17**, 3589–3607, DOI: [10.1111/j.1365-2486.2011.02478.x](https://doi.org/10.1111/j.1365-2486.2011.02478.x).
- 200 T. W. Choularton, R. N. Colville, K. N. Bower, M. W. Gallagher, M. Wells, K. M. Beswick, *et al.*, The great dun fell cloud experiment 1993: an overview, *Atmos. Environ.*, 1997, **31**, 2393–2405, DOI: [10.1016/S1352-2310\(96\)00316-0](https://doi.org/10.1016/S1352-2310(96)00316-0).
- 201 K. N. Bower, T. W. Choularton, M. W. Gallagher, R. N. Colville, K. M. Beswick, D. W. F. Inglis, *et al.*, The Great Dun Fell Experiment 1995: an overview, *Atmospheric Research*, Elsevier BV, 1999, pp. 151–184, available from: DOI: [10.1016/S0169-8095\(98\)00103-3](https://doi.org/10.1016/S0169-8095(98)00103-3).

