

PAPER

[View Article Online](#)
[View Journal](#) | [View Issue](#)
Cite this: *Nanoscale*, 2022, **14**, 382

Tailoring defects and nanocrystal transformation for optimal heating power in bimagnetic $\text{Co}_y\text{Fe}_{1-y}\text{O}@\text{Co}_x\text{Fe}_{3-x}\text{O}_4$ particles†

George Antonaropoulos,^{a,b} Marianna Vasilakaki,^c Kalliopi N. Trohidou,^c Vincenzo Iannotti,^d Giovanni Ausanio,^d Milinda Abeykoon,^e Emil S. Bozin,^f and Alexandros Lappas^{g,*a}

The effects of cobalt incorporation in spherical heterostructured iron oxide nanocrystals (NCs) of sub-critical size have been explored by colloidal chemistry methods. Synchrotron X-ray total scattering methods suggest that cobalt (Co) substitution in rock salt iron oxide NCs tends to remedy their vacant iron sites, offering a higher degree of resistance to oxidative conversion. Self-passivation still creates a spinel-like shell, but with a higher volume fraction of the rock salt Co-containing phase in the core. The higher divalent metal stoichiometry in the rock salt phase, with increasing Co content, results in a population of unoccupied tetrahedral metal sites in the spinel part, likely through oxidative shell creation, involving an ordered defect-clustering mechanism, directly correlated to core stabilization. To shed light on the effects of Co-substitution and atomic-scale defects (vacant sites), Monte Carlo simulations suggest that the designed NCs, with desirable, enhanced magnetic properties (*cf.* exchange bias and coercivity), are developed with magnetocrystalline anisotropy which increases due to a relatively low content of Co ions in the lattice. The growth of optimally performing candidates combines also a strongly exchange-coupled system, secured through a high volumetric ratio rock salt phase, interfaced by a not so defective spinel shell. In view of these requirements, specific absorption rate (SAR) calculations demonstrate that the rock salt core sufficiently protected from oxidation and the heterostructure preserved over time, play a key role in magnetically mediated heating efficacies, for potential use of such NCs in magnetic hyperthermia applications.

Received 6th August 2021,
Accepted 30th November 2021

DOI: 10.1039/d1nr05172e

rsc.li/nanoscale

Introduction

Magnetic nanoparticles (MNPs), a sub-class of nanoscale crystals (nanocrystals: NCs)¹ that consist of open-shell transition metal elements, have been the subject of considerable research endeavor in recent years. Their advantages stem from their capability to respond to electromagnetic stimuli (*e.g.* a mag-

netic field), thus enabling a broad spectrum of applications ranging from catalysis,² photonics,³ and data storage,⁴ to water treatment,⁵ energy storage⁶ and printing technologies.⁷ Moreover, from the standpoint of the present work, MNPs offer highly exploitable capabilities in the rapidly developing field of nanobiotechnology.⁸ The latter, amongst others, includes medical diagnostics with contrast agents, for magnetic resonance imaging (MRI) technologies and therapeutic strategies with heat emission carriers, for magnetic hyperthermia treatments, both taking advantage of facile bottom-up pathways for controlling and boosting the nanoparticles' magnetic performance.⁹ In this endeavor, biocompatibility and low toxicity are necessary, but understanding how structural and morphological characteristics can be utilized as materials' design parameters still requires insights into improving MNPs' performance. More specifically, magnetic heating under the influence of alternating (AC) magnetic fields depends on Néel-Brown relaxations, which evolve with the magnetic anisotropy constant (K) and saturation magnetization (M_s),¹⁰ thus offering a pathway for hyperthermia efficiency optimization. Changing

^aInstitute of Electronic Structure and Laser, Foundation for Research and Technology – Hellas, Vassilika Vouton, 71110 Heraklion, Greece. E-mail: lappas@iesl.forth.gr

^bDepartment of Chemistry, University of Crete, Voutes, 71003 Heraklion, Greece

^cInstitute of Nanoscience and Nanotechnology, National Center for Scientific Research Demokritos, 15310 Athens, Greece

^dCNR-SPIN and Department of Physics “E. Pancini”, University of Naples Federico II, Piazzale V. Tecchio 80, 80125 Naples, Italy

^ePhoton Sciences Division, National Synchrotron Light Source II, Brookhaven National Laboratory, Upton, New York 11973, USA

^fCondensed Matter Physics and Materials Science Division, Brookhaven National Laboratory, Upton, New York 11973, USA

†Electronic supplementary information (ESI) available. See DOI: 10.1039/d1nr05172e



the NCs' geometrical parameters, such as size¹¹ and shape,¹² offer another avenue to tune the associated relaxation times. While bottom-up, colloidal chemistry approaches are exploited with the purpose to imprint the aforementioned materials' design characteristics in favor of hyperthermia, top-down fabrication methods offer alternative exploitable morphologies. The derived MNPs may entail either a multi-layered structure called synthetic antiferromagnet (SAF), or involve a single magnetic layer having a magnetic vortex configuration.¹³ Interestingly, such artificial MNPs mimic the superparamagnetic ones prepared by chemical synthesis, but with advantages when dispersion and actuation in biological media are required. Furthermore, the bottom-up growth of topologically distinct phases, such as in a core@shell-like geometry,¹⁴ involving contrasting magnetic-ordering states between the core and the shell [*e.g.* antiferromagnetic (AFM), ferromagnetic (FM) and/or ferrimagnetic (FiM)], has proven to be particularly effective in introducing exchange anisotropies. Such systems take advantage of the technologically exploitable exchange-bias effect,^{15,16} with a concomitant enhancement of the NCs' hyperthermia response.¹² Last but not least, the chemical composition also plays a key role in changing the MNPs' magnetocrystalline anisotropy,¹⁷ thus allowing for further regulation of the Néel-Brown relaxation behaviour. In this respect, chemical substitution strategies have been evaluated, in an effort to tune the magnetic response of iron oxide NCs.^{18,19}

Compositional control of NCs

With the purpose to either provide new or enhance existing properties (*cf.* mechanical, electrical, optical, biological, magnetic, *etc.*), changing the chemical composition by introducing structurally compatible ions, has become a widely used method for the modification of the crystal lattice of a number of materials. Such an adjustment is being achieved through the incorporation of usually a small amount of atoms or ions, which would not normally be present in the matrix of the parent material crystal lattice. The ion being incorporated, can be either introduced in an interstitial crystallographic site or, most usually in the case of NCs, it can substitute another ion from the matrix.²⁰ A special case of crystal lattice chemical alteration is doping, where ions of the matrix are replaced with ions of the same²¹ or different number of valence electrons,²² aiming mainly at the modification of their electronic structure related physical properties.²³ The effects of such chemical substitutions become particularly noticeable on the nanoscale and great progress has been achieved in recent years, concerned with the control of chemical composition in nanocrystalline materials. Epitaxial growth of doped NCs gave great results in the past, allowing for significant technological development in novel materials, such as quantum dots.²⁴ On the other hand, the fabrication of doped colloidal NCs offers additional advantages, as for example, the opportunity to control the photoluminescence of colloidal semiconductor NCs, raising at the same time technological challenges.²⁵

Thus, over the last 15 years, research efforts have focused on ionic substitution in nanocrystals by means of colloidal chemistry principles. In this effort, two main pathways can be identified, substitution through ion diffusion or by mixing the appropriate precursors. In the first pathway, pre-formed colloidal NCs are being further subjected to an additional synthetic step, which includes a colloidal solution, containing the dopant/additive ions. For bulk materials, this demands elevated temperatures, as the procedure is governed by diffusion effects. The same procedure, for nanocrystalline derivatives on the other hand, can take place at moderate temperatures, typically lower than the temperatures routinely used in high-temperature colloidal syntheses. On the nanoscale, given the increased surface to volume ratio, the predominant effect is the absorption of the added ion at the highly active surface of the nanocrystal. Such procedures are known as ion-exchange methods, as the "additive" replaces an anion or cation accordingly, in the host crystal lattice. Their success is determined by the accurate control of four distinct processes: surface adsorption of the new ion, incorporation in the crystal lattice of the parent phase, lattice diffusion, and lattice ejection.²⁶ The recent years have seen a surge of interest in using this method to form otherwise hard to obtain nanocrystal morphologies, with fine-tuned properties.²⁷ The second pathway, requires mixing of all the ingredients necessary for the fabrication of the final product at the initial stage of the chemical reaction. Precursors which contain the necessary ions for the synthesis (*e.g.* metal-organic compounds), surfactant molecules and an appropriate solvent are typical ingredients for a colloidal nanoparticle synthesis. This assumes that both the ions of the host material and the substitutes are chemically compatible and capable of forming precursors, which react under the specified experimental conditions in a similar and predictable way. Choosing one over the other approach for the growth of core@shell iron oxide NCs is further discussed in the subsequent Experimental section.

Advantages of chemical substitution in MNPs

The challenges for optimal nanomaterials' composition occasionally come along with questions of how efficiently MNPs generate heat under AC magnetic field excitation. As magnetic hyperthermia is considered an innovative approach in synergistic therapeutic avenues for cancer treatment,^{28,29} materials' design pathways to improve the hyperthermic properties are needed. One common strategy is to attempt to increase the magnetic anisotropy. At the same time, size is a critical factor for MNPs, especially for biomedical applications, where minimal amounts of relatively small yet magnetically active particles should be used to avoid possible cytotoxicity. Thus, designed MNPs ideally would rest in the superparamagnetic regime (*i.e.* at critical sizes, $d < 20\text{--}30\text{ nm}$),^{9,30} without compromising much of their magnetic power. Many promising strategies have been explored in this direction,



including, modification of morphological features (size-shape tuned; $d \sim 20\text{--}40\text{ nm}$),³¹ growth of shells (for interfacial interactions; $d \sim 15\text{ nm}$)^{12,32} and alteration of the chemical composition (e.g. Zn-substituted ferrites; $d \sim 15\text{ nm}$).³³ The efficiency of the first two strategies, together with favourable nano-structural effects due to emerging Fe-site vacancies, mediating the composition, have been recently discussed for $\text{Fe}_x\text{O}@\text{Fe}_{3-x}\text{O}_4$ bimagnetic NCs ($d < 25\text{ nm}$).³⁴ The beneficial influence of defective structures with subcritical nanocrystal sizes ($d \sim 8\text{--}10\text{ nm}$) has also been demonstrated with doped ferrites. In such cases, partial substitution of Fe by transition metals in the nanostructure optimizes the effective magnetic anisotropy of iron oxide nanocrystals (IONCs).¹⁹ While this pathway maintains the desired morphology/size, it also provides improved heating generation (*cf.* specific absorption rate, SAR), at least up to a certain level of substitution (e.g. at $x \sim 0.6$, in $\text{Co}_x\text{Fe}_{3-x}\text{O}_4$).^{35,36}

Keeping in mind these findings, the present work aims to shed light on how atomic scale defect control can be manipulated by chemical substitution in suitably shaped core@shell IONCs in the sub-critical size range. For this purpose, synchrotron X-ray total scattering was utilized to probe their structure evolution at different Co-substitution levels. The findings were complemented by atomistic Monte Carlo simulations, which together with bulk magnetic measurements, offered a means to rationalize how tuning the population of crystal lattice vacancies may tailor heating power generation for hyperthermia applications.

Experimental

Synthesis of core@shell $\text{Co}_y\text{Fe}_{1-y}\text{O}@\text{Co}_x\text{Fe}_{3-x}\text{O}_4$ IONCs

Here we follow a synthetic route designed to produce uniformly sized, core@shell $\text{Co}_y\text{Fe}_{1-y}\text{O}@\text{Co}_x\text{Fe}_{3-x}\text{O}_4$ colloidal NCs, which were slightly modified from a previously demonstrated procedure that produced pure $\text{Fe}_x\text{O}@\text{Fe}_3\text{O}_4$ particles.^{34,37–39} Importantly, this allows for the direct comparison of the magnetic behaviour and structural characteristics among these series. The chosen protocol offered nanocrystal samples in the size range of $14\text{--}18\text{ nm}$ that is below the nominal critical size for IONCs to present superparamagnetic behavior and enhance magnetic losses, adequate for energy conversion into heat.²⁸ The protocol enables easy tuning of size and shape (spherical or cubic), while preserving a well-defined core@shell structure and good control of the composition; the cobalt content (x,y) of the samples made here varies from 12% to 35%. As mentioned earlier, the substitution of an ion in the host material could be realized through ion exchange. However, there is a drawback, associated with this technique when implemented in Wüstite@Spinel-ferrite core@shell-type NCs.⁴⁰ Thermal treatment of the pre-formed NCs could compromise the highly sensitive core@shell structure, causing the undesired oxidation of the core.⁴¹ Even mild heating of the NCs in a colloidal solution containing the ions involved in the ionic exchange procedure can provide the

chemical potential for the initiation of diffusion effects, in both the rock-salt and spinel crystal structures, which leads to the oxidation of the rock-salt phase (core) and the particle conversion to the spinel type.⁴²

Here, we suggest ways to improve the magnetic response and especially the magnetically induced heating performance of the MNPs, which is associated with the existence of an interface, between an AFM phase in the core and a FiM phase in the shell, while other types of magnetic anisotropy are also operational (*cf.* magneto-crystalline and surface anisotropy, *etc.*). Thus, we considered to grow the substituted MNPs either (i) by mixing the desired amounts of two distinct metal-organic precursors, one containing iron and one containing cobalt, at the initial stages of the reaction, a strategy which ensures the preservation of both magnetic phases or (ii) by utilizing a single metal-organic precursor, containing both iron and cobalt in a predetermined ratio. Both approaches produced well-shaped $\text{Co}_y\text{Fe}_{1-y}\text{O}@\text{Co}_x\text{Fe}_{3-x}\text{O}_4$ NCs, with adjustable Co/Fe levels. The method of mixing different precursors, exclusively containing one metal ion, is slightly more practical, since it allows for a wider Co-content range, just by varying the precursor proportion during the synthesis, whereas the other approach is more favorable when precise control of the Co-content of the nanoparticles is needed.

Materials

All reagents were used as received without further purification. Oleic acid (technical grade, 90%), octadecene (technical grade, 90%), hexane (ACS reagent, $\geq 99\%$), absolute ethanol ($\geq 98\%$) and sodium oleate powder (82%) were purchased from Sigma Aldrich. Iron(III) chloride ($\text{FeCl}_3 \cdot 6\text{H}_2\text{O}$, ACS/Ph Eur reagent, $\geq 99\%$) and cobalt(II) chloride ($\text{CoCl}_2 \cdot 6\text{H}_2\text{O}$, ACS reagent, 98%) were purchased from Merck. Deionized water was used when needed. Fe(III) oleate, Co(II) oleate and mixed Fe(III)/Co(II) oleate precursors were synthesized in the laboratory, as described in the following protocols.

Synthesis protocols

Colloidal syntheses were carried out in 100 mL round bottom three-neck flasks connected *via* reflux condensers to a standard Schlenk line setup. Immersion temperature probes and digitally controlled heating mantles ensured accurate temperature control of the colloidal mixture. Ar gas has been used as a protective atmosphere. Previous studies have shown that Fe_xO NCs formed under such synthetic conditions become oxidized to Fe_3O_4 and/or $\gamma\text{-Fe}_2\text{O}_3$ after removing the Ar-gas protection and exposing them to ambient air.⁴³ Alternatively, a 5% H_2/Ar gas mixture can also be used as a protective atmosphere in order to take advantage of the reductive action of H_2 , to further protect the sensitive rock-salt from being oxidized to the spinel forms. Since Co and Fe are introduced simultaneously into the colloidal mixture, it is assumed that based on the shell formation mechanism, Co is equally distributed in the whole nanoparticle volume, namely in both the core and the shell phases.



Preparation of the metal-oleate precursor. A mixed Co(II)/Fe(III) – oleate, with the desired Co/Fe ratio, was prepared before each nanoparticle synthesis and subsequently used as the iron and cobalt precursor. The metal oleate precursor was formed by the decomposition of $\text{FeCl}_3 \cdot 6\text{H}_2\text{O}$ and $\text{CoCl}_2 \cdot 6\text{H}_2\text{O}$ in the presence of sodium oleate at $\sim 60^\circ\text{C}$, based on our previous protocol for Fe-oleate formation.^{34,44} In a typical synthesis, 16 mmol $\text{FeCl}_3 \cdot 6\text{H}_2\text{O}$ salt and 48 mmol sodium oleate were dissolved in a mixture of solvents, namely 56 mL of hexane, 32 mL of ethanol and 24 mL of deionized water, in a round-bottom three-neck flask. The required amount of $\text{CoCl}_2 \cdot 6\text{H}_2\text{O}$ was added to the mixture, adjusting accordingly the sodium oleate quantity. We were doing so, considering that for the stabilization of each Fe(III), three oleate anions and for each Co(II), two oleate anions are needed. We were keeping the solvent quantities the same. The mixture was heated to $60\text{--}65^\circ\text{C}$ under an Ar atmosphere for 4 hours and then left to cool down to room temperature. A separation funnel was then used to separate the upper, organic phase, containing the metal oleate complex, from the lower aqueous phase. Afterwards, the organic phase was washed with about 30 mL of deionized water and separated again, and this process was repeated 4 times. At the end, the metal organic complex was dried under stirring and mild heating for several hours, resulting in a viscous metal-oleate, with its color ranging from dark red to brownish, depending on its Co content. Special care was taken to protect the final product from light. Some mild heating to ensure its fluidness may be needed just before its use for each nanoparticle synthesis. A modified synthetic route for the fabrication of nanoparticles was also tested, where two distinct metal oleate precursors were used to supply the system with Fe(III) and Co(III) species. Pure Fe(III) – oleate was formed following exactly the same protocol, omitting the addition of Co(II)³⁴ and then, pure Co(II) – oleate was similarly produced by dissolving 16 mmol $\text{CoCl}_2 \cdot 6\text{H}_2\text{O}$ and 32 mmol sodium oleate in 42 mL of hexane, 24 mL of ethanol and 18 mL of deionized water. The oleates were separated, washed and dried in the same way as described above and the desired amount of each one was then used for each nanoparticle synthesis. We found both ways to be successful for the production of high-quality nanoparticles.

Synthesis of Co-substituted iron-oxide nanocrystals. The nanoparticles were synthesized by employing a protocol similar to that reported in our earlier work³⁴ that followed a slightly modified synthesis avenue.^{37–39} In a typical synthesis 2.4 mmol mixed iron/cobalt oleate or 2.4 mmol in total of iron oleate and cobalt oleate were dissolved in octadecene. The proportion of Fe/Co was predetermined according to the desired ratio of metals in the final product. 1.2 mmol oleic acid was added as the surfactant. The amount of the solvent (octadecene) was tuned so that a final Fe/Co-oleate molar ratio of 0.2 mol kg^{-1} solution was achieved. Three discrete major steps can be identified during the synthetic protocol. First, the mixture is being heated at 100°C under vacuum for 60 min at a degassing step, for the complete removal of any water and oxygen residues. This is crucial and possible omission of this

stage may lead to single-phase ferrite particles.⁴⁵ Then, the mixture is heated to 220°C , with a heating rate of about $10^\circ\text{C min}^{-1}$. This is the so-called “nucleation step”, which allows for the crystal seeds to be formed. At the final step, known as the “growth step”, the colloidal mixture is heated to 320°C with the same heating rate, where the nanocrystals’ growth takes place. The effective separation of the nucleation and growth steps is crucial for the production of monodisperse nanoparticles. Minor variations in this two-step heating protocol ensure the control of the particles’ size distribution and allow the tuning of their size. The latter is mainly achieved through the time of stay at each of the 2 final steps. Our protocol, with a time of stay of about 60 min at each of these steps, gives rise to spherical NPs with average diameters in the 14–18 nm range. As proposed in earlier studies, the addition of sodium oleate powder in a proportion of 1 : 8–1 : 5 with respect to the metal-oleate precursor, is adequate to promote the formation of cubic NPs.³⁹ Under the described experimental conditions, slightly larger nano-cubes, with edge diameters ranging from 18 to 20 nm can be realized in this way. The mixing of two separate oleate precursors or the use of a mixed Fe/Co oleate precursor seems to make the fine tuning of the sodium oleate/metal oleate ratio more difficult for the fabrication of well-formed cubic NPs, compared to pure iron oxide NPs. At the end of the synthesis, the colloidal mixture, containing the nanocrystals (NCs), was left to cool down at room temperature. The NCs were precipitated upon ethanol addition. They were then separated by centrifugation at 6000 rpm for 5 min, redispersed in hexane and centrifuged once more after adding ethanol in a 1 : 1 ratio with respect to the hexane. A short stay in a sonication bath may be needed after the centrifugation for the complete re-dispersion of the particles. Excessive sonication though may affect the quality of the dispersion, since this removes the surfactants from the particle surface. The whole process was repeated two additional times at a centrifugation speed of 1000 rpm. Although the size distribution is tuned during the synthesis, a well-chosen post-synthetic purification protocol is essential for an effective size-selective separation of the MNPs.⁴⁶

Characterization techniques

Morphological characterization

High resolution transmission electron microscopy. High resolution transmission electron microscopy was utilized to reveal the morphological characteristics of the prepared nanoparticles, namely the size, shape and core@shell structure. Low-magnification and HRTEM images were recorded using a LaB₆ JEOL 2100 transmission electron microscope, operating at an acceleration voltage of 200 kV. A Gatan ORIUS™ SC 1000 CCD camera was used to capture the images. The average size of the particles is determined by statistical analysis, measuring the diameter or edge length of a statistically significant number of nanoparticles with the freely available image processing software *ImageJ*.⁴⁷ The nanoparticle suspensions



needed to be highly diluted prior to the TEM analysis. The same solvent, hexane, was utilized for such a dilution. A drop of the diluted nanoparticle suspension was then deposited onto a carbon-coated copper grid, allowing the hexane dispersant to evaporate. The image is formed from the interaction of the electrons with the nanoparticles as the electron beam is transmitted through the specimen. The TEM column is evacuated to a pressure down to the order of 10^{-4} Pa to reduce the chance of interaction between electrons and gas molecules. The beam is focused when passing through the electromagnetic lenses in the electron column and creates a magnified image on a fluorescent screen, making the observation by the operator possible. The screen can be retracted to allow the CCD camera located below to record the image. Contrast can arise from differences in density. TEM in high resolution mode is capable of achieving atomic-scale resolution.

Structural characterization

X-ray pair distribution function (xPDF). Synchrotron X-ray total scattering data were acquired at the 28-ID-2 beamline of the National Synchrotron Light Source II (NSLS-II), at Brookhaven National Laboratory. Nanoparticle dispersions were dried (hexane was evaporated under ambient conditions) and the resulting nanoparticle powder was encapsulated in \varnothing 1.0 mm Kapton capillary, sealed at both ends with epoxy glue. The beamline was setup in pair distribution function (PDF) data collection mode with a PerkinElmer 2D image plate detector (sample-to-detector distance of 326 mm, calibrated against Ni standard) for fast data acquisition, but of relatively modest Q space resolution, which limits the PDF field of view in the r space.⁴⁸ Data were collected on warming between 10 K and 300 K, in 5 K steps, making use of the beamline's continuous flow liquid helium cryostat (Cryo Industries of America), with an incident X-ray energy of 68 keV ($\lambda = 0.1823$ Å). Data for bulk cobalt ferrite (CoFe_2O_4) and wüstite (Fe_xO) powders were also acquired as a reference.

The atomic PDF gives information about the number of atoms in a spherical shell of unit thickness at a distance r from a reference atom⁴⁹ and is defined as

$$G(r) = 4\pi r[\rho(r) - \rho_0] \quad (1)$$

where ρ_0 is the average number density, $\rho(r)$ is the atomic pair-density, and r represents radial distance. The raw 2D experimental data are converted to 1D patterns of intensity *versus* momentum transfer, Q , utilizing the Fit2D program,⁵⁰ which are further reduced and corrected using standard protocols as implemented in the PDFgetX3 software,⁵¹ and then finally Fourier transformed to obtain $G(r)$:

$$G(r) = (2/\pi) \int_{Q_{\min}}^{Q_{\max}} Q[S(Q) - 1] \sin(Qr) dQ \quad (2)$$

$Q = (4\pi \sin \theta/\lambda)$ is the magnitude of the momentum transfer for elastic scattering, and $S(Q)$ is the properly corrected and normalized total scattering function measured from Q_{\min} to Q_{\max} ($0.25 \leq Q \leq 25$ Å⁻¹). The PDF data, collected over a sufficiently wide Q -range, thus carry structural information over a broad

range of length scales, in contrast to traditionally used (bulk) probes, such as EXAFS and NMR, whose sensitivity is limited to the nearest-neighbor interactions. The experimental PDF, $G(r)$, can subsequently be modelled by calculating the following quantity directly from a presumed structural model:

$$G(r) = \left[\frac{1}{r} \sum_{ij} \frac{f_i f_j}{(f)^2} \delta(r - r_{ij}) \right] - 4\pi r \rho_0 \quad (3)$$

Here, f stands for the X-ray atomic form factors evaluated at $Q = 0$, r_{ij} is the distance separating the i -th and j -th atoms, and the sums are over all the atoms in the sample. In the present experiments, elemental nickel powder was measured as the standard material to determine parameters, such as Q_{damp} and Q_{broad} , used to account for the instrument resolution effects. Raw data obtained with $Q_{\text{max}} = 25$ Å⁻¹ were fitted using the PDFgui software suite.⁵²

Energy-dispersive X-ray spectroscopy (EDS). Elemental analysis of the as prepared samples was performed with a JEOL JSM-6390VL Scanning Electron Microscope (SEM), operating at 20 kV, equipped with an INCA PentaFET-x3 EDS analyzer from Oxford Instruments. X-rays are produced when a beam of electrons, coming from the electron gun of the microscope, stimulates the sample, which is located on a movable stage in the sample chamber. When ground state electrons in discrete energy levels are excited, creating electron holes, electrons from higher-energy electron shells fill these holes, emitting X-rays, which correspond to the energy difference between the higher- and lower-energy levels. Each chemical element has a unique atomic structure, which leads to an X-ray emission pattern that is characteristic for the specific electron configuration. The intensity and energy of the X-rays emitted from a specimen are measured by the energy-dispersive spectrometer, allowing for compositional analysis of the sample. EDS can determine the elements that are present in a sample and their relative abundance in it. The accuracy of the method though, can be affected by the nature of the sample and the possible overlap of X-ray emission peaks from elements with similar electron configurations.

Magnetic characterization

The magnetic behaviour of the nanoparticle samples was evaluated using a vibrating sample magnetometer (VSM, Oxford instruments, Maglab 9 T), operating at a vibration frequency of 55 Hz. The measurements of the temperature-dependent magnetization, $M(T)$, were carried out at 50 Oe at a fixed temperature rate of 1 K min⁻¹ after either zero-field cooling (ZFC) or field cooling (FC) in 50 Oe from 5–300 K. Hysteresis loops, $M(H)$, were obtained at room temperature and 5 K by sweeping the applied field from +50 kOe to -50 kOe and back to +50 kOe after cooling the sample from 300 K to 5 K under ZFC or an applied field $0 < H_{\text{cool}} \leq 50$ kOe (FC) for selected samples. In the FC procedure, once the measurement temperature was reached, the field was increased from H_{cool} to $H = 50$ kOe and the measurement of the loop was pursued. The $M(H)$ data were recorded under a magnetic field sweep with an optimised rate of 30 Oe s⁻¹ in order to minimize the propagation of a possible



synchronization error of the measuring electronics, present in the case of sweeping rates greater than 200 Oe s^{-1} . Special precautions were taken to maintain the structural integrity of the samples and more specifically to avoid possible spontaneous oxidation of the rock-salt core to spinel. The specimens for magnetic characterization were prepared by absorbing colloidal MNP dispersions on pre-weighed cotton wool pieces and letting the hexane to evaporate, until a pure nano-powder weight of $\sim 10 \text{ mg}$ was obtained. They were subsequently placed in suitable size gel capsules, and then sealed under an Ar atmosphere (in a glovebox) in airtight vials. The vials were then opened just before the magnetic measurements to avoid unnecessary exposure to ambient air. This ensured that the magnetic behavior of the samples corresponds to that of the specimens probed by the synchrotron X-ray studies, as similar actions were undertaken at the NSLS-II facility.

Monte Carlo simulations

To aid the interpretation of the experimental results for the MNPs, we have developed a microscopic core/shell model, where the interface (IF) of the two regions was explicitly included. The calculations were carried out with the Monte Carlo (MC) technique and the implementation of the Metropolis algorithm.⁵³ Spherical MNPs were considered, with a diameter d , expressed in units of lattice spacing of a simple cubic lattice (*cf.* magnetite cell, $a = 8.39 \text{ \AA}$). The simulated MNPs consist of an AFM core and a FiM shell.⁵⁴ For this purpose, we studied three model systems, with different structural features, to simulate the magnetic behaviour of a pure core@shell particle ("pure" corresponds to $\text{Fe}_x\text{O}@_{\text{Fe}_{3-\delta}\text{O}_4}$ MNPs, identified as sample S15 in reference³⁴), and two Co-substituted core@shell MNPs involving a lower Co:Fe proportion ("model #1") and another one with a higher Co:Fe content ("model #2"). The radius of these three modelled MNPs remains the same, while other structural characteristics (*e.g.* core/shell volume ratio, vacant sites *etc.*) differ according to the degree of Co-substi-

tution at the Fe-sites. Such a parameterization was motivated by the trends derived from the experimental xPDF data and the subsequent structural analysis. The exact morphological and structural characteristics of the simulated model MNPs are schematically illustrated in Fig. 1, and are as follows:

"pure", spherical MNPs of an average radius $R = 9.1$ and a shell thickness of 4 lattice spacings, assume 20% core and 80% shell, as fractions of the whole particle volume, entailing an AFM core and a FiM shell. The MNPs are assumed to have 25% vacant metal-ion crystallographic sites (with no cobalt content), randomly dispersed in both the core and shell phases.

The introduction of Co in the crystal structure at different levels, assumes two $\text{Co}_y\text{Fe}_{1-y}\text{O}@_{\text{Co}_x\text{Fe}_{3-x}\text{O}_4}$ MNPs of the same average radius, namely:

"model #1", the MNPs have a radius of $R = 9.1$, shell thickness of 3.3 lattice spacings, resulting in 25% core and 75% shell volume, with a Co substitution level of 10% in both phases, meaning that now 10% of the provided Fe-sites in the core are occupied by Co and 10% of Fe-sites in shell are also occupied by Co. The model adopts 40% vacant metal-ion sites, randomly distributed over the core phase only, including the core interface (see eqn (4)).

"model #2", the MNPs have a radius of $R = 9.1$, shell thickness of 1.9 lattice spacings, thus resulting in 50% core and 50% shell volume, with a Co substitution level of 35% in both phases, following the same concept as in model #1. This model adopts 40% vacant metal-ion sites, randomly distributed over the shell phase only, including the shell interface and surface.

The spins in the MNPs were assumed to interact with the nearest neighbor Heisenberg exchange interaction and at each crystal site they experience a uniaxial anisotropy. Under an external magnetic field, the energy of the system is calculated as:^{34,53,54}

$$E = -J_{\text{core}} \sum_{i,j \in \text{core}} \vec{S}_i \cdot \vec{S}_j - J_{\text{shell}} \sum_{i,j \in \text{shell}} \vec{S}_i \cdot \vec{S}_j - J_{\text{IF}} \sum_{i \in \text{core}, j \in \text{shell}} \vec{S}_i \cdot \vec{S}_j - K_{i \in \text{core}} \sum_{i \in \text{core}} (\vec{S}_i \cdot \hat{e}_i)^2 - K_{i \in \text{shell}} \sum_{i \in \text{shell}} (\vec{S}_i \cdot \hat{e}_i)^2 - \vec{H} \sum_i \vec{S}_i \quad (4)$$

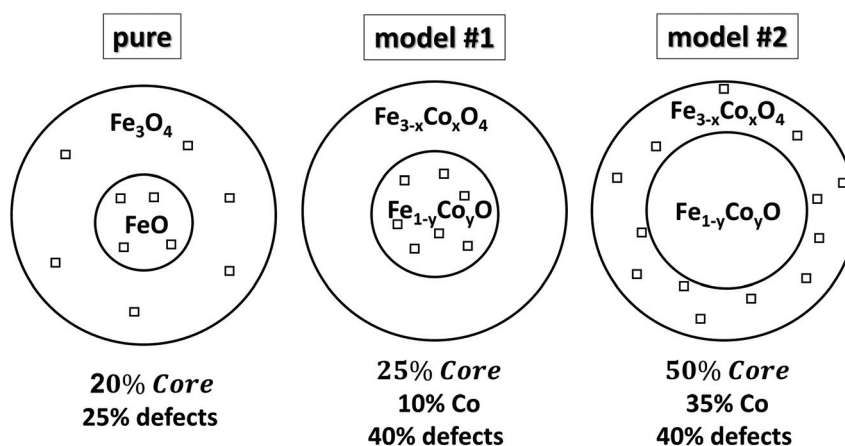


Fig. 1 Schematic, qualitative illustration of various heterostructured core@shell nanocrystals. The magnitude of the chosen parameters for three representative models, studied by Monte Carlo simulations is given, namely: relative volume fractions of core (compared to shell), Co substitution level (in percentage), population of defects in the sense of vacant metal-ion crystallographic sites (depicted with open squares) and their distribution in the nanocrystals' volume.



Here \vec{S}_i is the atomic spin at site i and \hat{e}_i is the unit vector in the direction of the easy-axis at site i . We consider the magnitude of the atomic spins in the two AFM sublattices to be equal to 1 and in the two FiM sublattices of the shell to be equal to 1 and 1.5, respectively. The first term in eqn (4) gives the exchange interaction between the spins in the AFM core and the second term gives the exchange interaction between the spins in the FiM shell. To take into account the difference of the magnetic transition temperatures [$T_N(\text{core}) < T_C(\text{shell})$], we consider the exchange coupling constant of the core as $J_{\text{core}} = -0.1 J_{\text{FM}}$ and that of the shell as $J_{\text{shell}} = -1.5 J_{\text{FM}}$, where J_{FM} is a reference value and it is considered to be the exchange coupling constant of a pure ferromagnet (FM), $J_{\text{FM}} = 1$. The third term gives the exchange interaction at the interface between the core and the shell. The interface includes the last layer of the AFM core and the first layer of the FiM shell. The exchange coupling constant of the interface J_{IF} is taken, $J_{\text{IF}} = -0.3 J_{\text{FM}}$. The fourth term gives the anisotropy energy of the AFM core, K_C . If the site i lies in the outer layer of the AFM core $K_{\text{i-core}} = K_{\text{IF}} = 5 J_{\text{FM}}$ (due to strong lattice mismatch) and $K_{\text{i-core}} = K_C = 0.5 J_{\text{FM}}$ elsewhere. The fifth term gives the anisotropy energy of the FiM shell, which is taken as $K_{\text{shell}} = 0.1 J_{\text{FM}}$ and at the shell IF $K_{\text{IF}} = 5 J_{\text{FM}}$. If the site i lies in the outer layer (*i.e.*, the surface) of the shell then the anisotropy is taken as $K_{\text{i-shell}} = K_S = 1.0 J_{\text{FM}}$, which is assumed to be random (rather than uniaxial). The last term in eqn (4) is the Zeeman energy. The relative values of J_{shell} and K_S were calculated starting from the bulk values and then taking into account the size of the experimentally studied MNPs and the corresponding surface effects, in line with earlier atomistic simulations.^{34,53,55} Moreover, in the three models depicted Fig. 1, the structural defects

(vacancies) were also taken into account as described by Lappas *et al.*,³⁴ while in models #1 and #2, the Co ions were randomly distributed, assuming randomly oriented anisotropy axes, with $K = 5 J_{\text{FM}}$ (10 times larger than the K_{core}), since the magnetocrystalline site anisotropy of Co ions is ten times larger than that of Fe ions.⁵⁶

On these grounds, the hysteresis loops $M(H)$ were calculated upon a field-cooling procedure, starting at a temperature $T = 3.0 J_{\text{FM}}/k_B$ and down to $T_f = 0.01 J_{\text{FM}}/k_B$, at a constant rate under a static magnetic field H_{cool} , directed along the z axis. The exchange bias field was estimated by the hysteresis loop shift along the field axis $H_{\text{EB}} = -(H_{\text{right}} + H_{\text{left}})/2$ and the coercive field was defined as $H_c = (H_{\text{right}} - H_{\text{left}})/2$, where H_{right} and H_{left} are the points where the loop intersects the field axis. The fields H , H_c , and H_{EB} are given in dimensionless units of $J_{\text{FM}}/g\mu_B$, the temperature T in units J_{FM}/k_B and the anisotropy constants K in units J_{FM} . In this work, 10^4 MC steps per spin (MCSS) were used at each field step for the hysteresis loops and the results were averaged over 60 different samples.

Results and discussion

Cobalt-substituted spinel ferrites

In the spinel $(M^{3+})_8[M^{3+}, M^{2+}]_{16}O_{32}$ (M = transition metal) structural type [where round brackets represent tetrahedral (Td) and the square brackets octahedral (Oh) coordination by oxygen crystallographic sites], typically, Co^{2+} (ref. 57) tends to replace $\text{Fe}^{3+}/\text{Fe}^{2+}$ resting at the Oh sites⁵⁸ although some distribution at the tetrahedral spinel sites (*cf.* Td) cannot be excluded (Fig. 2). In such ferros spinels, the ratio of $\text{Co}^{2+} \rightarrow \text{Fe}^{3+}/\text{Co}^{2+} \rightarrow$

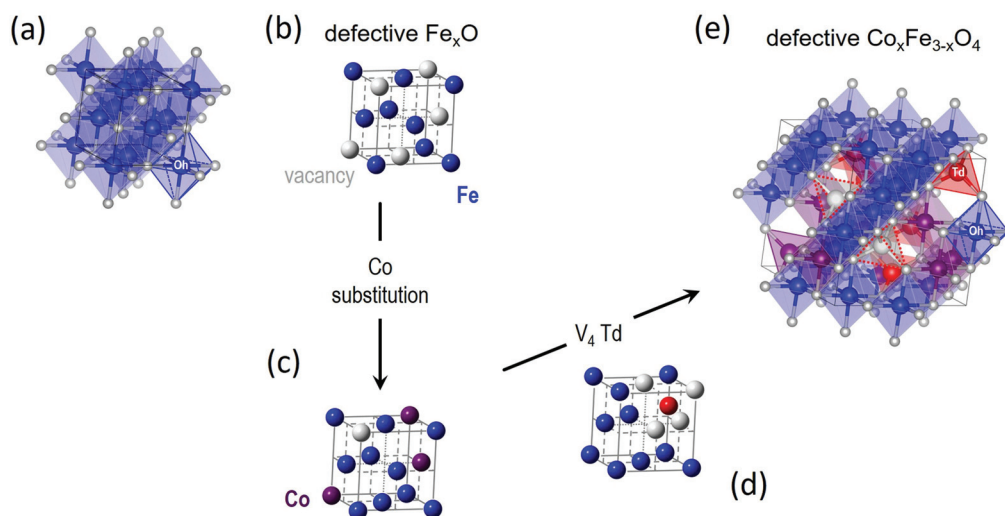


Fig. 2 Crystal structure of (a) stoichiometric rock salt wüstite (FeO), with octahedrally (Oh) coordinated by oxygen (small white spheres) ferrous Fe^{2+} sites (blue spheres). The same structure, simplified not to show oxygen and coordination polyhedra, where (b) is a defective Fe_xO structure, showing Fe and vacant (V) metal-ion sites only (large grey spheres), and (c) is a Co-(purple spheres)-substituted derivative, depicting a less-defected rock-salt structure. (d) A plausible ordered-defect rock-salt structure, with Fe^{2+} Oh sites, and interstitial ferric (Fe^{3+}) tetrahedral sites (Td; red spheres) surrounded by four vacant (V) iron positions for charge balance. (e) Coalescence of V_4 -Td defect clusters⁵⁹ upon further oxidation, may offer a likely pathway towards the nucleation of a defective (Td, vacant sites – depicted by dotted red line trigonal pyramids), Co-substituted ferros spinel structure.



Fe^{2+} also affects the degree of inversion,¹⁸ but based on the characterization tools at our disposal (*i.e.* synchrotron X-ray PDF is not able to distinguish the different metal species in this case) we cannot conclude on such effects. As the substituting ion is introduced in the mixture of reactants simultaneously with the other precursors, at the early stages of the reaction, we are of the opinion that Co^{2+} ions are distributed over the whole volume of each particle, in both the core and shell, in proportion to their relative volume fraction. This behavior would be in line with earlier findings for the partial oxidative conversion of the initially grown wüstite to create the spinel shell.^{18,42,59–61} High resolution single-particle elemental mapping of the MNPs would be required to confirm this proposition.

Structural insights from microscopy

HRTEM: single-particle morphology. Transmission electron microscopy is the basic, but important post-synthetic characterization tool to evaluate the success of the synthetic procedure. Good dispersion quality (no agglomeration of MNPs), narrow size distribution and well-defined particle shapes are the key factors to look for. Samples that did not meet these criteria were rejected. Thereafter, three Co-substituted nanoparticle samples of spherical shape, in the 14–18 nm size range, were chosen for the study. In particular, they attained diameters of $d = 15.2 \pm 1.2$ nm, $d = 13.9 \pm 1.1$ nm and $d = 17.8 \pm 0.9$ nm, with various Co-substitution levels of 12%, 21% and 35%, respectively. The ability to change the particle morphology from spherical to cubic, by slightly changing the amount of surfactants, has been also confirmed (ESI, Fig. S3†). However, cubic morphology samples are not thoroughly discussed in the following sections, due to the lack of a more systematic variation in their Co-substitution rate. Since the Co content seems to be the dominant effect that defines their structure and magnetic response, these samples are called henceforth S12, S21, and S35, respectively, where *S* stands for spherical morphology, while the following numbers are indicative of the cobalt substitution level (see the following SEM-EDS section). HRTEM (Fig. 3 and Fig. S3a†) suggests that all nanoparticle samples show a high degree of monodispersity, in terms of shape and size (narrow size distributions). The coexis-

tence of dark and light contrast features in all samples (clearly shown in high-magnification TEM images) is proof that two chemical phases of different electron diffracting power share the same nanocrystal volume. Since the fabrication of the specimens followed a similar synthetic route to the one that yielded $\text{FeO}@\text{Fe}_3\text{O}_4$ NCs studied before,³⁴ the aforementioned findings are in line with the tendency of such NCs to adopt a topological arrangement of phases, with rock salt type in the core of the particle that is surrounded by a spinel type of phase in the shell (*vide infra*: X-ray PDF analysis).

SEM-EDS: compositional analysis. Energy-dispersive X-ray spectroscopy was used to estimate the average Co/Fe ratio from an ensemble of nanoparticles. The specimens for the EDS analysis were prepared by casting a few drops of the as-prepared colloidal suspension on a silicon substrate and then letting the dispersant to evaporate. They were then placed on the specialized stage of the SEM sample chamber, pumped for a few minutes to achieve the required vacuum and finally the electron beam was focused on the specimens using the special electromagnetic lenses located in the electron column. The measurements were taken from several sections of the specimens by focusing the beam on different spots of the specimen surface, for statistical reasons. This procedure suggests a high compositional uniformity across the surface of the specimen. The reported results represent averages of the different measurements. Fortuitously, iron shows a strong and distinct characteristic peak, which does not overlap with the cobalt peaks, allowing for a reasonably accurate calculation of their relative abundance from the relative peak intensity, compared to measured standard samples. The spectra show only the characteristic peaks attributed to Fe and Co, apart from a strong silicon peak coming from the substrate, indicating the high chemical purity for all samples (ESI, Fig. S4†). The relative atomic composition in all cases agrees within the accuracy of the assessment with the nominal one, planned during the chemical synthesis. It is worth noting that the Co substitution level refers to the overall Fe ions being replaced by a certain amount of Co. The SEM-EDS facility utilized here though, cannot derive the exact Co-level in the individual core and the shell topological sections. For the following analysis, we assume that Co-substitution is equally possible in both crystal-

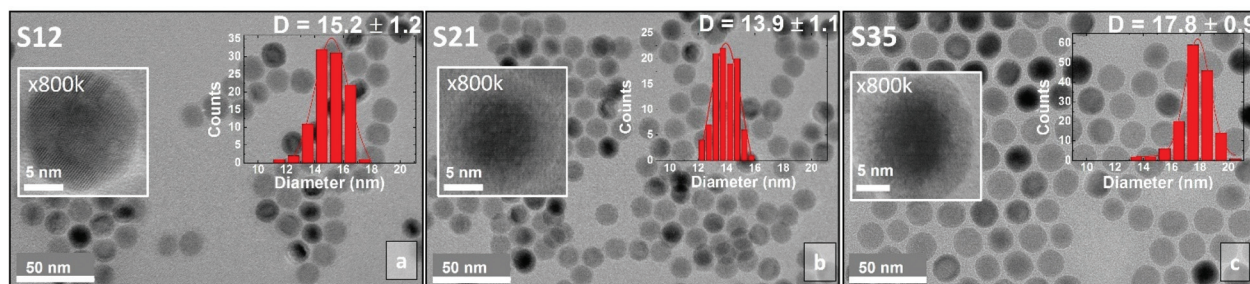


Fig. 3 Low-magnification bright-field transmission electron microscopy (TEM) images of core@shell $\text{Co}_x\text{Fe}_{1-x}\text{O}@\text{Co}_y\text{Fe}_{3-y}\text{O}_4$ spherical nanocrystals and insets of high-resolution TEM images of selected particles at 800k magnification. The nanoparticle size distributions are also shown as insets.



lographic phases and the probability of Fe ion to have been replaced by Co in each section is proportional to their relative volumetric ratios.

Structural insights from synchrotron X-ray PDF

The need for both qualitative and semi-quantitative, phase-specific structural information from large ensembles of particles that could reveal Angstrom-long localized lattice and bonding distortions in the unit cells, motivated us to acquire the synchrotron X-ray total scattering data, for all nanoparticle specimens and compare them to the bulk reference materials (Fig. 4). These, combined with the PDF method, offer insights that move beyond the findings of techniques that focus on single nanoscale particles (*e.g.* HRTEM).⁴⁰ Our effort here is concerned with (i) confirming the coexistence of two distinct crystallographic phases (*i.e.* rock salt and spinel) in a core@shell structure, (ii) estimating their average relative volume fractions, (iii) unveiling possible deviations of the local structure from the cubic symmetry and (iv) uncovering likely temperature-mediated effects; thus, we recorded the PDFs for all the materials between $10 < T < 300$ K. Our analysis addressed mainly the low- r region in the atomic PDFs ($r = 1\text{--}10$ Å), as the field of view was limited due to the moderate Q space resolution of the experimental setup used.

Local structure – rock salt phase modifications

Bulk CoFe_2O_4 was measured as a reference material. However, due to the similar electron count for Fe and Co, there is lack of

sensitivity in X-ray PDF (xPDF) to differentiate between the two. For this reason, without loss of relevant information to which the method is sensitive to we have utilized models approximated by the magnetite Fe_3O_4 composition. The technique though is able to identify the differences between tetrahedral (Td) and octahedral (Oh) crystallographic sites, based on their quite different chemical environments. Thus, an iron-only spinel offers an adequate approximation for the description of our systems. This is confirmed by the observation that the atomic PDF in the low- r region for the bulk reference sample (CoFe_2O_4) is described equally well with the cubic cobalt ferrite spinel, as well as with the cubic magnetite models (Fig. S5, in ESI†). As the valence state differences are indistinguishable too, a possible site inversion could not be verified and the degree of inversion also could not be determined with this technique. Therefore, we performed the structure refinements based on the simplified, normal spinel, cubic configuration of magnetite, $(\text{Fe}^{3+})_8[\text{Fe}^{3+}, \text{Fe}^{2+}]_{16}\text{O}_{32}$.⁶² Especially in the case of our model, this could be simply expressed as $(\text{M})_8[\text{M}]_{16}\text{O}_{32}$, where M stands for the transition metal cation (Fe or Co), the round brackets represent tetrahedral (Td) and the square brackets octahedral [Oh] coordination by oxygen crystallographic sites, assuming no $\text{M}^{2+}/\text{M}^{3+}$ inversion between Td and Oh sites. This model was then utilized to fit the xPDF data for nanoparticles of variable Co-concentrations, with a reasonably good quality of the fit (R_w) in the low- r region, at room temperature. However, the introduction of an additional crystallographic phase of rock-salt type cubic cell (Fe_xO)⁶³ is essential (*vide infra*) for obtaining adequate fit quality (Fig. 5).

The resulting simplified 2-phase rock-salt@spinel cubic model describes well all the nanoparticle samples, unlike our previous work,³⁴ where this model systematically failed to



Fig. 4 Experimental atomic xPDF data at 300 K for the spherical nanocrystal samples S12, S21, and S35 and the bulk reference materials of CoFe_2O_4 and FeO , plotted as a function of the radial distance, r , fitted in the low- r range (1.7–10 Å). The solid pink line over the data (open circles) is the best fit based on either the rock-salt FeO ($Fm\bar{3}m$ symmetry) or the cubic-spinel Fe_3O_4 ($Fd\bar{3}m$ symmetry) model for the references, respectively, or a combination of these in a two-phase model for the NCs. The quality of fit factors (R_w) is also given. The green line below each fit corresponds to the difference between observed and calculated PDFs. The larger R_w factor (14.4%) for the fit of FeO reference, in comparison to the rest, is a likely result of its highly defective, sub-stoichiometric nature (Fe_{1-x}O), even in the bulk form.

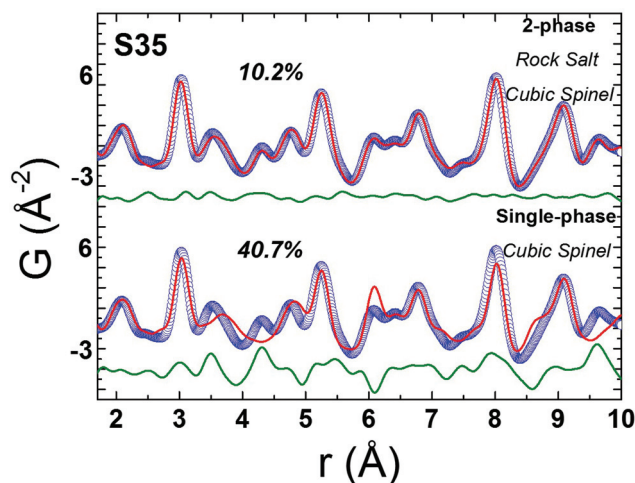


Fig. 5 Representative xPDF fits of data at $T = 300$ K over the low- r PDF region (1 nm) for nanocrystal sample S35, assuming a single-phase cubic spinel model ($Fd\bar{3}m$, $R_w = 40.7\%$) at the bottom and a 2-phase rock-salt/cubic spinel model ($Fm\bar{3}m/Fd\bar{3}m$, $R_w = 10.2\%$) at the top, indicating clearly a structure consisting of two crystallographic phases for nanocrystals (S35). Similar results verify the core@shell structure for the rest of NCs studied (ESI, Fig. S6†).



describe the peak at $r \sim 3$ Å (PDF data of $\text{Fe}_x\text{O}@_{\text{Fe}_{3-\delta}\text{O}_4}$ or the fully oxidized $\text{Fe}_{3-\delta}\text{O}_4$ NCs), which implied a deviation of the nanoparticle local structure from the ideal cubic lattice configuration, that was better described with a distorted, tetragonal spinel model.³⁴ In the samples studied here, there is no evidence for a local structure symmetry lowering from cubic to tetragonal. Another significant difference in these samples arises from their tendency to preserve the core@shell structure, as shown in the fit results, from the increased volume fraction of the rock-salt phase (see ESI, Table S3†). Interestingly, the higher the Co-content, the larger the volume fraction of the rock-salt phase. More specifically, as evidenced from the raw data, the nanoparticle PDF peak centered at $r \sim 3$ Å shows a systematic shift to higher interatomic distances (of the same extent for all samples), compared to the bulk spinel reference (Fig. 6 and 7). At the same time, there is a clear evolution in peak intensity as the Co content rises (Fig. 7). It is helpful though to refer to the PDF peak identification, based on the expected positions of metal (Fe) interatomic distances in a 2-phase rock-salt@spinel system, as shown in Fig. 7 in the form of calculated partial PDFs. The peak at $r \sim 3$ Å may correspond to the closest distance between the metal atoms at the Oh sites in the spinel structure (Fig. 2 and 7). Nevertheless, the experimentally observed shift to higher- r can be attributed to the strong presence of the rock-salt phase in all samples, since the nearest distance of a pair of M–M in the rock-salt is just above 3 Å (see Fig. 7, green line). That is why we were able to account for it when fitting the $G(r)$ data by introducing an additional phase of rock-salt type in the model. Along these

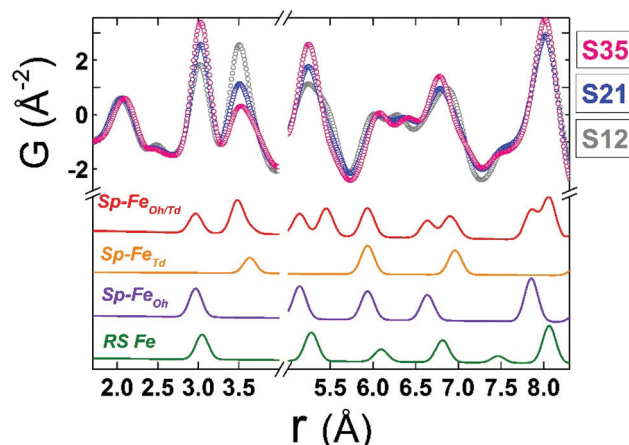


Fig. 7 Normalized low- r PDF data obtained at $T = 300$ K for all spherical nanocrystal samples, shown with coloured, open circles. The data are plotted over each other to visually enhance the differences in peak intensities, arising from different rock-salt vs. spinel volume ratios and possible stoichiometry-related effects. The colored solid lines beneath, represent the calculated partial PDF contributions arising from interatomic distances of Fe–Fe pairs only in a rock-salt cell, containing only Fe atoms (RS Fe: green line), in a spinel cell containing only octahedral Fe atoms (Sp-Fe_{Oh}: purple line), a spinel cell containing only tetrahedral Fe atoms (Sp-Fe_{Td}: yellow line) and a spinel cell containing both octahedral and tetrahedral atoms (Sp-Fe_{Oh/Td}: red line). Calculations are based on the aforementioned models for rock-salt and normal cubic spinel configurations; the oxygen sub-lattices are neglected for simplicity. The obtained simulated profiles are arbitrarily scaled in the graph, for a better visualization of the expected positions of Fe–Fe bond distances in the relevant phases.

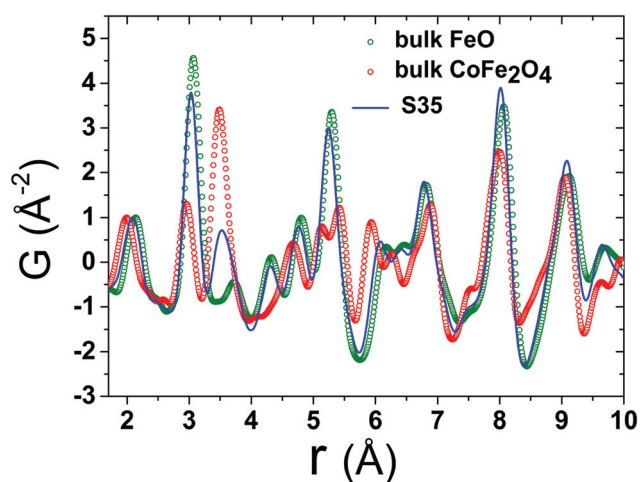


Fig. 6 Representative low- r raw data collected at $T = 300$ K for reference materials FeO (green circles), CoFe_2O_4 (red circles) and the $\text{FeO}@_{\text{CoFe}_2\text{O}_4}$ nanocrystal sample S35 (blue line). The normalization is realized by dividing the x -PDF patterns with the intensity of the peak centered at ~ 2.0 Å (first peak, attributed to nearest-neighbour Fe–O pairs). The various contributions of the two different crystallographic phases, represented here by the bulk reference samples, account for slight peak shifts and, in some cases, variations of peak intensities of the experimental PDFs in the NCs. For clarity, only data for nanocrystal sample S35 are shown here, whereas data for the remaining NCs (S12, S21) are compared in Fig. 7.

lines, the observable increase in peak intensity can also be explained by the growth of the rock-salt volume in the MNPs, occurring during the increase of the Co content, as demonstrated by the PDF fit results (ESI, Table S3†).

Although all fits were of reasonably good quality, significant conclusions were made from model-independent assessment of the raw PDF data and related simulations, compared to the PDF data obtained for the $\text{Fe}_x\text{O}@_{\text{Fe}_{3-\delta}\text{O}_4}$ nanoparticle system reported before.³⁴ In the latter, the IONCs displayed variable shifts of the PDF peaks at $r \sim 3$ Å (attributed to $\text{Fe}_{\text{Oh}}\text{--Fe}_{\text{Oh}}$ and $\text{Fe}_{\text{Oh}}\text{--Fe}_{\text{Td}}$ interatomic distances, see Fig. 2 and 7, purple and red lines), even when no rock-salt phase was present, implying deviations from the ideal cubic local structure, stabilized by variable levels of Fe-site vacancies present in the spinel phase.³⁴ In the Co-substituted samples, though, the peak shift towards higher r -values is accompanied by a dramatic increase of the peak intensity, clearly originating from rock-salt phase contribution, as corroborated by our PDF simulations (Fig. 8a and b). More specifically, the simulation shown in Fig. 8b implies that in a two-phase model, if a rock salt contribution is enhanced (no other changes made in the model) it causes the 3 Å peak intensity to grow and the 3.5 Å intensity to drop. Notably, the higher the Co-content in the nanoparticle samples, the higher the peak associated with the rock-salt phase, as presented in Fig. 8a. This is in line with the findings

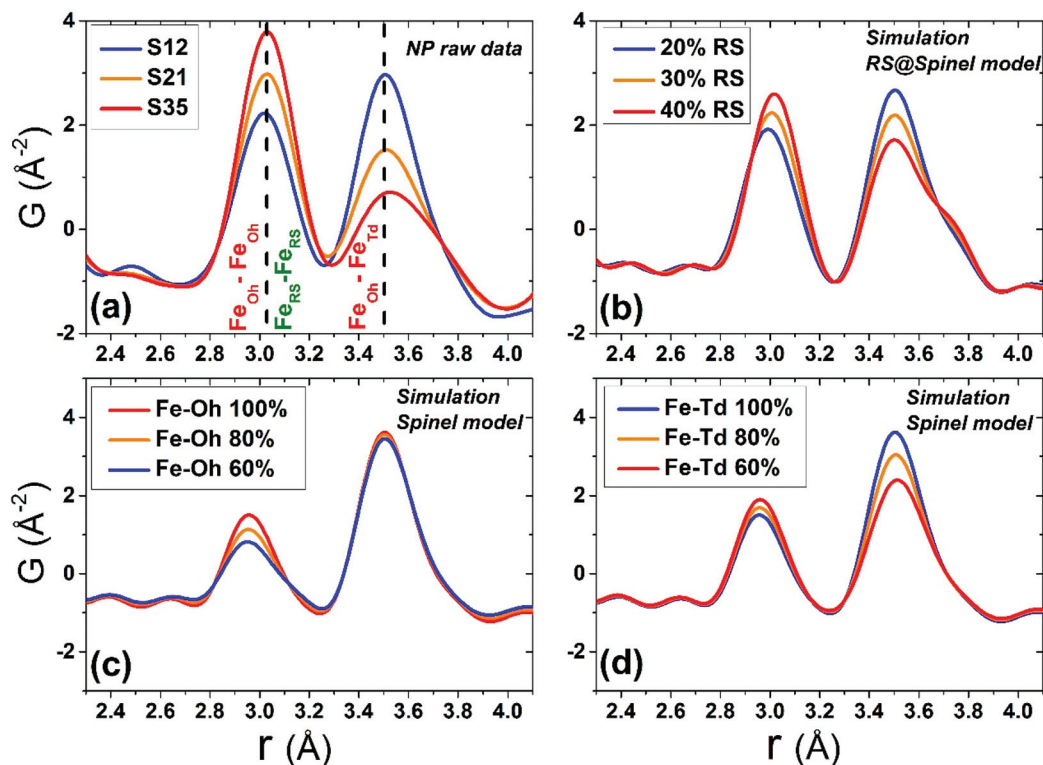


Fig. 8 (a) Normalized experimental $G(r)$ patterns at $T = 300$ K in the <5 Å r -region for all nanocrystal samples, focusing on the peaks corresponding to $\text{Fe}_{\text{Oh}}\text{--Fe}_{\text{Oh}}$ (~ 3 Å) and $\text{Fe}_{\text{Oh}}\text{--Fe}_{\text{Td}}$ bond distances (~ 3.5 Å) in the spinel crystal lattice and $\text{Fe}\text{--Fe}$ bond distances (~ 3 Å) in the rock-salt lattice. Simulated xPDF patterns on the basis of: (b) the 2-phase rock-salt/cubic spinel model, calculated for different rock-salt to spinel phase volume ratio; (c) a single-phase cubic spinel model, assuming fully occupied tetrahedrally (Td) coordinated Fe atoms, while the octahedral (Oh) Fe-site occupancy is varied in a stepwise manner, starting from 60% up to 100% (fully occupied); (d) a single-phase cubic spinel model, assuming fully occupied Oh Fe-sites, while varying the Td Fe-site occupancy up to 100%. The effects of the various configurations used in the simulations, reflect on the relative intensity ratio modifications of the PDF peaks, at ~ 3 Å and ~ 3.5 Å.

from data fittings over the low- r region (1 nm) of the PDFs. Thus, it seems that chemical substitution of Fe for M ($\text{M} = \text{Mn}, \text{Co}, \text{Ni}$), has two effects: it does not only partially eliminate the local distortions observed in pure iron oxide specimens,⁶⁴ but also helps the preservation of the rock-salt core, at least in this type of Co-substituted core@shell systems. This could be rationalized by a less defective structure of the rock-salt cobalt-based oxide (CoO) core, while the $\text{Co}_x\text{Fe}_{3-x}\text{O}_4$ shell supports a higher resistance to oxygen diffusion.⁶¹

The behavior may imply that upon creation, the Co-mediated spinel shell acts as an effective barrier, impeding further core oxidation, commonly observed in heterostructured $\text{FeO@Fe}_3\text{O}_4$ nanoparticles.⁴⁰ Indeed, earlier studies found that 12.5 nm, Co-substituted FeO presents limited surface oxidation, with a rock-salt@spinel structure, where the core is preserved 120 days after being exposed to air,⁶¹ while even smaller, 9.5 nm, MNPs appear not to change with aging, as indicated by their rather unchanged magnetic behaviour, 120 days after exposure to ambient conditions.⁶⁵ The observation suggests that samples richer in Co exhibit a better-preserved core, possibly arising from the enhanced stability of the Co^{2+} ions against oxidation to Co^{3+} rather than that of Fe^{2+} counterparts, hence paving the way for synthesizing core@shell nano-

structures that are highly oxidation-resistant over time. The observed intensity increase of the PDF peak in question, also complies with a higher metal ion occupancy in the rock-salt phase, due to its less defective structure (Fig. 2).

Local structure – defect mediated changes

When the contribution of the rock-salt phase is enhanced, as described above, an inevitable lowering of the peak maximum at $r \sim 3.5$ Å is to be expected, changing the 3.0/3.5 Å relative peak intensity ratio, favoring the 3 Å peak. This phenomenon is observed in the PDF data, but it is additionally intensified, implying possible sub-stoichiometry effects, which further lower the intensity of the 3.5 Å peak. The peak at $r \sim 3.5$ Å corresponds to the closest distance between M_{Oh} and M_{Td} in the spinel lattice, (Fig. 2) while a weaker contribution attributed to $M_{\text{Td}}\text{--}M_{\text{Td}}$ pairs, at slightly higher interatomic distances (r), affects this peak as well (Fig. 7), as M ions could be either Fe or Co in the spinel structure in our nanoparticle samples. This complexity makes it challenging to investigate whether the peak intensity suppression is caused by atomic site defects (*i.e.* vacant crystallographic sites) either in M_{Oh} sites alone, or M_{Td} sites alone, or both. To further explore whether the dramatic changes in the relative PDF peak intensities are indeed



driven by the presence of vacancies at M sites, and to evaluate whether these vacancies have any site-specific preference, simulated xPDF patterns were obtained based on the normal cubic spinel configuration, while the population of either M-vacancies at the Oh sites or M-vacancies at the Td sites was varied (Fig. 8c and d). The simulations show that the higher the level of M_{Oh} vacancies in the spinel structure, the less intense the 3 Å peak, whereas the 3.5 Å peak is rather unaffected (Fig. 8c). Additionally, when M_{Td} sites become vacant, this decreases dramatically the peak intensity at 3.5 Å and somewhat increases the intensity of the 3 Å peak (Fig. 8d). Combining the above-described trends, we conclude that given a significant percentage of rock-salt volume fraction, M substoichiometry at the Td sites is the dominant effect, although some extent of vacancies on Oh sites cannot be excluded.

To independently verify this proposal, we further extracted the atomic displacement parameters (ADPs) as a function of temperature ($T = 10\text{--}300\text{ K}$), based on the 2-phase model fits of the PDF data mentioned earlier. ADPs reflect atomic thermal motion and possible static disorder of atoms in the structure.⁶⁶ Isotropic T -dependent ADPs (characterised by $U_{iso}\text{ Å}^2$) for M sites in the two phases considered are plotted in Fig. 9. All the ADPs in sample S12 (Fig. 9(a)) show similar values that are typical of nanostructured systems,^{67,68} displaying a smooth upward trend with increased temperature. When going to Co-richer samples (S21 – Fig. 9(b), S35 – Fig. 9(c)) the ADPs for the Oh metal atoms in the spinel phase and those for the metal atoms in the rock-salt phase, remain approximately the same, as depicted by interpolating the ADP curves to $T = 0\text{ K}$ and $T = 300\text{ K}$. On the other hand, the ADPs for the Td metal atoms in the spinel grow with the Co-content (*cf.* %Co increases on going from Fig. 9(a) to Fig. 9(c)), indicating possibly higher static disorder in the M_{Td} sublattice. The absence of M_{Td} ions from their predicted crystallographic sites, as suggested from the previous analysis based on simulations, makes the corresponding M_{Td} – M_{Td} pair bonds more compressible, thus allowing for broader atomic thermal motion. In fact, the ADP_{Td} curve, observably pushes away from the ADP_{Oh} curve on going from S12 to S21 and S35 (Fig. 9). This apparent “splitting” becomes more significant as the Co content increases, implying significantly different static disorder associated with more dramatically perturbed chemical environment of the Td co-ordinated metal ions as compared to the Oh sites. This trend is further corroborated by the extracted Einstein temperature, Θ_E , obtained from fitting the T -evolution of the ADPs with the correlated Einstein-model (Fig. 9):⁶⁹

$$\sigma^2(T) = \sigma_0^2 + \frac{\hbar^2}{2\mu k_B \Theta_E} \coth \frac{\Theta_E}{2T} \quad (5)$$

In this description, assuming Fe–Fe atom pairs only, Θ_E become significantly smaller for Td ions, when the Co-content increases, thus suggesting lattice softening. At the same time a significant increase of σ_0 for Td sites indicates a notable increase of static disorder in the M_{Td} sub-lattice (ESI, Table S3†). A similar trend could be recognized for the rock-salt ADPs, which however show slightly lower values upon the



Fig. 9 Refined isotropic temperature parameters (σ) of Fe atoms in rock-salt (RS) (Insets: green points), Fe_{Oh} (orange points) and Fe_{Td} (red points) in spinel, derived from refinements of experimental PDFs in the 10–300 K temperature range, for nanocrystal samples S12 (a), S21 (b) and S35 (c), on the basis of a typical 2-phase model of a rock-salt/spinel configuration. Error bars are shown, although, for RS they are smaller than the actual symbols. The T -dependent temperature parameters were further analysed in view of the correlated Einstein model (solid lines) to obtain the Einstein Temperature, Θ_E and evaluate the average static thermal displacements, σ_0 (see text for details).

Co-level increase, implying the subtle stabilization of the rock-salt phase against the spinel one. Minimal variations in the crystallographic site preference of Co ions (Td or Oh) from sample to sample cannot be excluded as well. Overall, the significant changes in ADPs, Θ_E and σ_0 for Td sites confirm that disorder in the Td spinel sites, mediated by Co incorporation in the lattice, is the predominant effect.

A plausible explanation of the above-mentioned effects may arise from an earlier proposed pathway for rock-salt self-passi-



vation, through clusters of defect-units that coalesce in order to nucleate ferros spinel phases.^{42,59,60} Based on this mechanism, highly defective rock-salt structures would have a large population of vacant M^{2+} sites in the rock-salt lattice, which would give rise to a significant amount of interstitial M^{3+} ions for charge balancing reasons (Fig. 2d). Such interstitial ions are coordinated by ordered vacant sites (V) in such a manner (*cf.* V_4 -Td defect clusters),⁵⁹ which resembles the M_{Td} sites in spinels (Fig. 2e). Thus, during the rock-salt to spinel oxidative conversion, these interstitials may have the tendency to become M-ions occupying Td atomic sites in the spinel structure. In a less-defective rock-salt system, such as that obtained by Co-substitutions (Fig. 2c), there is less need for such charge balancing, thus resulting in fewer interstitial ions. It seems that the lower population of these interstitials in the Co-mediated rock salt phase has as a consequence, a lower population of M_{Td} ions in its oxidized form (spinel) that reflects in more abundant Td vacant sites.

In summary, the PDF analysis was able to evaluate the crystal structure of the rock salt core and the spinel shell and quantify their average relative volumetric ratio (see ESI, Table S3†) for each particle batch. The analysis suggests that the incorporation of Co ions in the Fe_xO phase, cures the commonly suffering from defects structure by effectively increasing the occupancy of metal ion sites in the rock salt phase. This seems to give the core a higher degree of resistance against oxidative conversion to a spinel shell. Thus particles with a higher Co content have also higher volume fractions of the rock salt phase in the core (ESI, Table S3†). The xPDF results indicate that a higher M^{2+} stoichiometry in the rock salt part by Co-substitutions, results in increased levels of unoccupied Td sites in the spinel, likely through oxidative shell creation involving an ordered defect clustering mechanism, while Oh sites may retain a typical moderate sub-stoichiometry, as implied by the comparable across the samples ADPs (Fig. 9).

Magnetic behavior

In view of the variation of Co% content among the nanoparticle samples, the consequent structural evolution of the core@shell structure and the deviation from a perfect, fully stoichiometric crystallographic ordering (*vide supra*), we measured and evaluated their magnetic properties. Our main interest was to investigate whether and at what extent the identified structural characteristics affect the magnetization of the particles, the exchange interactions and the magnetocrystalline anisotropy, as depicted in measurable quantities, such as χ (magnetic susceptibility), M_s (saturation magnetization), H_{EB} (exchange bias field) and H_C (coercive field). The dc magnetic susceptibility $\chi(T)$ curves (Fig. 10d–f), measured based on zero-field cooled (ZFC) and field cooled (FC) protocols,⁷⁰ show a broad maximum, indicative of the characteristic temperature, T_B , separating the superparamagnetic from the blocked state, as a result of the competition between the thermal energy and the magnetocrystalline anisotropy on the nanoscale, and is commonly expressed to be proportional to the particle volume and magnetic anisotropy.⁷¹ Here, for

similar particle volumes, T_B seems to be governed by the Co content and is increasing in a nearly linear way (Fig. S7, ESI†), probably due to increased magnetocrystalline anisotropy caused by the incorporation of Co in the lattice. Additionally the ZFC part of the $\chi(T)$ curves presents a sudden drop in all samples (Fig. 10d–f), which resembles the paramagnetic to antiferromagnetic (AFM) transition, marked by the characteristic Néel temperature, T_N . The latter, progressively shifts from a low-temperature transition, as in wüstite (*cf.* FeO , $T_N = 198$ K) towards room temperature, with Co-level increase (*cf.* CoO , $T_N = 291$ K).⁷² It is peculiar though to think whether the subtle anomaly at 125–150 K in the low-Co% sample S12, with an increased volume fraction of the spinel shell, could be linked to a Verwey-like transition (T_V), usually observed in bulk magnetite,⁷³ as well as in its nanostructured counterparts.^{74,75} Actually, similar Verwey-like transitions at various characteristic temperatures for Mn-, Zn-, and Co-substituted spinel ferrites have been reported.⁷⁶

In view of assessing the coupling of lattice to magnetic transitions, the temperature variation of the refined lattice parameters from xPDF is considered. For the spinel phase, they show a systematic evolution with increasing temperature for all samples (Fig. 10g–i). Namely, an initial drop at ~ 50 K until they reach a minimum between 120 K and 150 K and then a constant expansion with further T increase. It is worth noting that the more intense, step-like drop of the lattice parameter for sample S35 at 50 K coincides with a subtle anomaly shown in the ZFC $\chi(T)$ around the same temperature. It is however unclear if these barely visible anomalies in the magnetization curves are indeed related to delicate magnetoelastic effects, as the resolution of our magnetometer could not permit identifying such systematics across all samples studied. However, the lattice parameters of the rock salt core present also a similar anomaly, in the same T -range as that corresponding to the spinel phase. As the two crystallographic phases are mechanically coupled, magnetostriction (*cf.* compressive strain) may operate through their common inorganic interface to mediate the cross-coupling between the distinct structures.

Additionally, hysteresis loops were recorded under field-cooling conditions to further support the development of a macroscopic, exchange bias field (H_{EB}) caused by interfacial exchange interactions. To further investigate the processes leading to H_{EB} , $M(H)$ loops under gradually increasing cooling fields have been recorded for selected NP samples. Fig. 11(a) shows the evolution of H_{EB} with increasing cooling fields for samples S12 and S21, compared to an earlier studied 15 nm core@shell spherical $FeO@Fe_3O_4$ sample (identified as S15 in reference³⁴). A quite peculiar observation results from their comparison. In S12 H_{EB} values are much higher than those of S15, as expected from the better-preserved AFM core and the subsequently larger interface between the AFM and FiM phases, further assisted by the possible magnetic inhomogeneities stemming from higher magnetocrystalline anisotropy due to Co substitution. There is however, an important diminution of H_{EB} for sample S21, which presents even weaker exchange-bias than the non-Co-containing iron oxide sample.



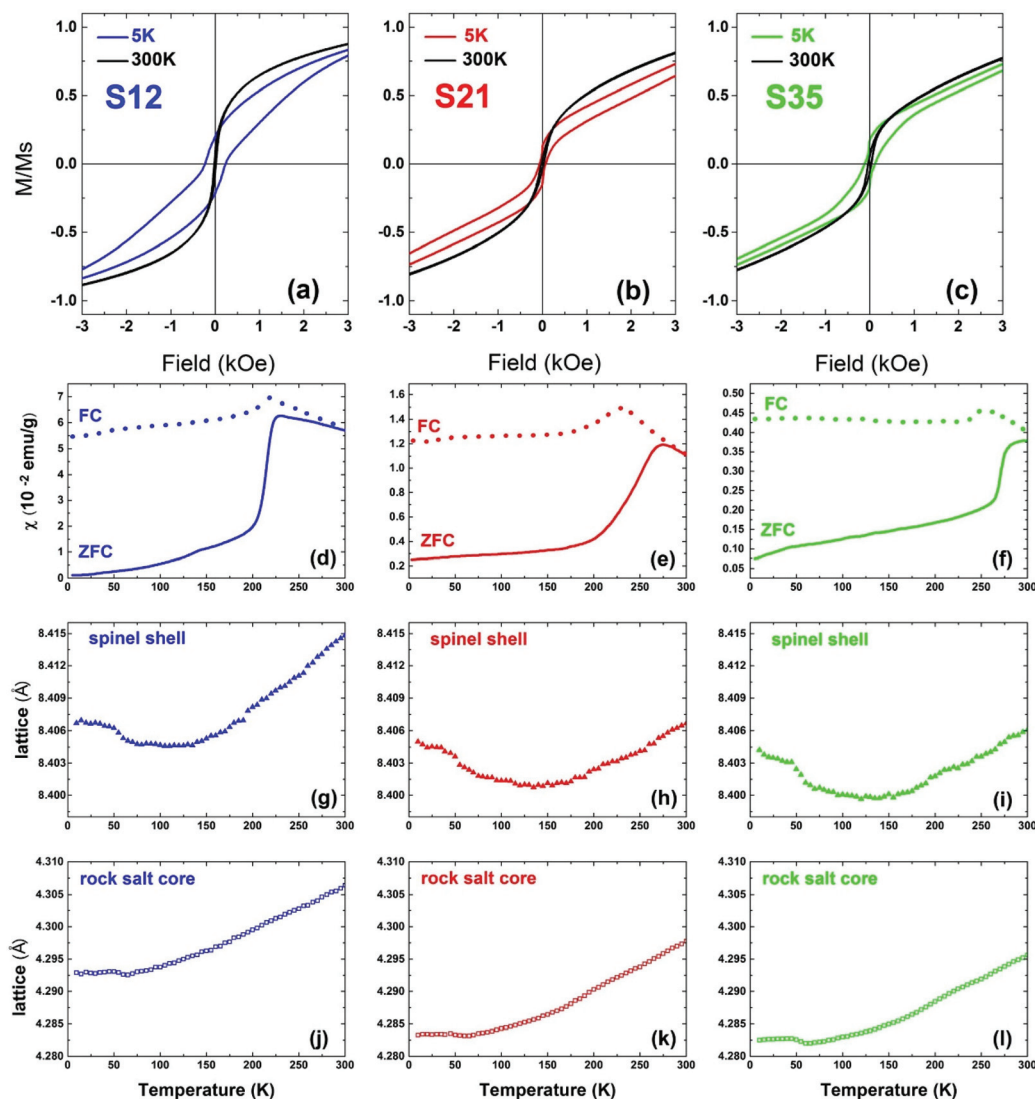


Fig. 10 The low-field part of the normalized hysteresis loops (M/M_s) at 5 K and 300 K for nanocrystal samples S12 (a), S21 (b) and S35 (c) taken under zero field-cooled protocols. Temperature evolution of the zero-field cooled (ZFC, solid lines) and field-cooled (FC, dotted lines) susceptibility curves for the nanocrystals S12 (d), S21 (e) and S35 (f), under a magnetic field of 50 Oe. Lattice parameter temperature evolution in the same T -range for core (j–l) and shell (g–i) crystallographic phases.

Furthermore, while all samples present a weak discontinuous step like variation of magnetization near zero field (Fig. 10a–c), only sample S12, compared to S21, shows two switching field distributions, marked by different maxima in dM/dH ZFC and FC protocols (ESI, Fig. S9†), suggesting an inhomogeneous magnetic behavior possibly arising from coexisting magnetic components of contrasting H_c s. Summarizing, magnetization characteristics, such as χ , M_s , and T_B appear to present the expected, Co-mediated behaviour for such particles, which is mainly related to the spinel phase.^{18,35,77} On the other hand, the morphological and structural study of S12 and S21 (HRTEM and xPDF) suggests that both samples have a rather narrow size distribution, similar average sizes and core to shell volume ratios (Fig. 3, Table S3 in ESI†), which merely would

not give rise to such inhomogeneities in magnetism and the differences in the H_{EB} s.

One can however argue that the outcomes are a likely consequence of the clustering of MNPs that perturbs the intrinsic magnetic properties due to dipolar interactions. We are of the opinion that such an effect may be negligible, because (i) even when the “concentration” of MNPs is the largest (e.g. S35: take into account the mass of cotton wool and nanoparticle powder used, 10.3 vs. 14.6 mg), the estimated volume of the nanoparticle powder is approximately 2% of the volume of cotton wool, inferring a large average distance of the embedded in the cotton wool NCs and (ii) the emerging anisotropy contribution due to Co and vacancies (*vide infra*: Monte Carlo simulations) plays the dominant role in the magnetic behaviour of



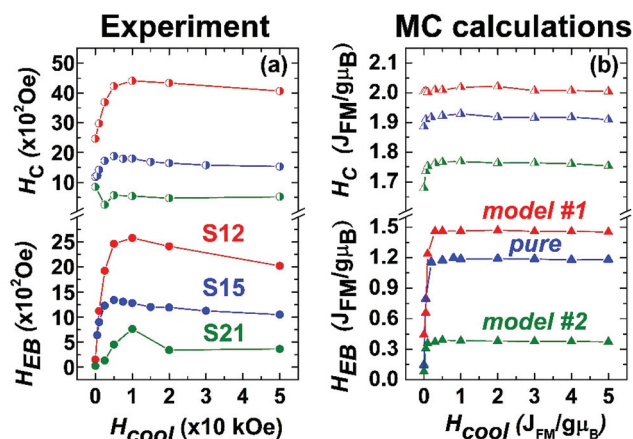


Fig. 11 (a) Experimentally determined exchange bias (H_{EB} , full circles) and coercive fields (H_C , half-full circles) and (b) Monte Carlo calculations of H_{EB} (full triangles) and H_C (half-full triangles) for the three heterostructured nanocrystal models (Fig. 1).

the MNPs and masks the interparticle interactions even in the lower anisotropy case. Thus, a cause for the observed differences must be sought in view of the lattice compositional variations imposed by Co-substitutions and the different distribution of defects (in terms of Fe-vacancies) in the nanoparticle volume.

Monte Carlo modeling of MNPs

Evolution of macroscopic magnetic parameters. In order to rationalise the physical property evolution, we utilized Monte Carlo (MC) simulations to investigate how Co substitution in the MNPs' crystal lattices, influence (i) the core/shell volume fraction ratio, (ii) the atomic-scale defects (Fe/Co-lattice site vacancies) and (iii) their distribution in the nanoparticle volume, that altogether may be key parameters that couple to magnetism. MC calculations offer the exchange bias field (H_{EB}) and the coercive field (H_C) as a function of the applied cooling field strength, for low- T (Fig. 11b). The parameters in the simulated models (Fig. 1) were chosen in such a way that we could investigate whether the experimentally observed trend, depicted in Fig. 11a is reproduced when the Co substitution level increases. The core/shell volume ratio, the relative amount of vacancies and their phase preference (core or shell) in these models, are considered as Co-related effects and constitute a simplified, representative illustration of the experimental observations and the conclusions made from the xPDF analysis.

The corresponding amount and type of spin in each region of the three simulated MNPs ("pure", model #1, and model #2; Fig. 1) are given in Table S1 in the ESI.† H_{EB} is directly related to the applied H_{cool} , as a result of uncompensated spins frozen at the core-shell interface. There is a sharp increase in the H_{EB} , when starting from zero-field and gradually applying larger H_{cool} (Fig. 11). This is attributed to the competition between the Zeeman energy and the other magnetic interactions within the system. As the H_{cool} increases, the magnetic

coupling between the field and the magnetic moments (Zeeman energy) increases, tending to orient them along the field direction. For high enough fields, such coupling competes with the other magnetic interactions within the system overcoming the exchange coupling at the interface, which leads to a peak and then a gradual decrease of the H_{EB} when the Zeeman energy dominates. This decrease is mainly determined by the intrinsic magnetic anisotropy of the system and by its microstructure.^{53,78} Differences between the observed and the MC calculated results are attributed to the fact that the model takes into account only the essential characteristics of the particle microstructure. H_C on the other hand, although similarly affected by Zeeman energy, is much less dependent on the H_{cool} because it is governed largely by the magnetocrystalline anisotropy in both magnetic phases, thus allowing for relatively high values even at $H_{cool} = 0$. Experimental and MC calculated results shown in Fig. 11 are in line with the described mechanisms. For an in-depth understanding of the mechanisms that dominate these measurable quantities, one has to look more closely into the details of crystal lattice configuration of the simulated models (Fig. 1, section S1 in the ESI†).

Apart from the competition of the spins at the core-shell (AFM-FiM) interface, some spins in the AFM phase (closed to, but not necessarily at the interface) can contribute to the exchange bias. Such spins are pinned to a certain direction after the field cooling, and are coupled to the FiM layer.⁷⁹ The origin of these pinned moments is not yet quite clear, but they are believed to be related with some kind of disorder, such as point defects.⁸⁰ In fact, weak H_{EB} s have been measured in the past for highly defective (due to crystallographic vacancies), single phase sub-critical size ($d \sim 10$ nm) FiM NCs.³⁴ In order to give an estimate of these effects in the MC calculation (Fig. 11b), the contribution of defects accounted for in these models was also examined (Fig. 1, Table S1 in the ESI†). So, upon Co-substitution:

model #1, represents particles with a significant amount of defects in their AFM core and core-IF, acting as pinning centres. The shell, with no defects at all, adopts a perfect FiM ordering. Additionally, the shell's large volume fraction in relation to the total particle volume means that the pinned moments around the defects should exhibit a strong coupling with the easily magnetized FiM phase, resulting in a large exchange bias. The inhomogeneous reversal of spins found in such exchange-bias systems leads to an increased H_C as well,⁸¹ illustrated also in Fig. 11b for model #1.

"pure" model, offers a somewhat lower exchange bias and coercive fields. Although this model has a similar AFM volume (20% core compared to 25% core in model #1), the significantly smaller population of defects in the core and the core-IF results in less pinning centres and consequently exchange interactions, lowering the H_{EB} and H_C . A more defective FiM shell should also negatively affect its ability to couple with pinned spins near the AFM/FiM interface.

model #2, presents the lowest calculated H_{EB} . In this case, there are no defects at all in the AFM core, which could play



the role of pinning centres. The increased volume fraction of the core (50%) results in a relatively thin and highly defective FiM shell, which along with a high Co percentage (Co substitution decreases the magnetization of spinel: Fig. 10d–f, Table S4 in ESI†) is unable to strongly interact with the uncompensated spins at the AFM/FiM interface. Thus, such a small H_{EB} , as shown in Fig. 11b, is the outcome. Normally, an increased Co-level in a given Fe/Co spinel system would increase its coercivity, due to the increased magnetocrystalline anisotropy, mediated by Co. This is not the case in model #2 because of the discussed morphological characteristics (smaller volume of the spinel-FiM phase, which has a rather negligible contribution in H_{C}) and the very weak exchange coupling interactions.

Towards optimally performing MNPs. The discussed behaviour of the simulated models is in good agreement with the experimental trends. In that respect, sample S12 presents the highest H_{EB} and H_{C} values among all samples, since it has a rather defective core, surrounded by a not so defective spinel shell, involving a relatively low Co-content, as shown by the structural analysis. On the other hand, sample S21 shows a weaker performance, in terms of H_{EB} and H_{C} , which is explained by its less defective and larger core, surrounded by a more defective shell together with a higher Co-substitution rate. The S15 would be expected to perform in a similar manner to S12. It turns out though that since heterostructured $\text{FeO}@_{\text{Fe}_3\text{O}_4}$ NCs⁴⁰ are not able to preserve the oxidation-sensitive core³⁴ (compared to Fe/Co-bearing MNPs, with similar structural and morphological characteristics, *e.g.* S12), the AFM/FiM interface is compromised as well as the ability of S15 for larger exchange coupling.

To shed light on the effects of Co-substitution and defects (vacant sites), on H_{EB} and H_{C} , we further investigated several variations of model #1 and model #2, looking into how the core or shell separately may be affected (S1, Fig. S1 and Fig. S2 in ESI†). A particle with a perfectly ordered, non-defective core would exhibit the poorest magnetic response. However, this extreme case is rather impossible to obtain in a lab-based chemical synthesis protocol. Realistically, the rock salt core plays mainly a role in the exchange interactions to the extent that it creates a well-defined AFM/FiM interface, so, it is crucial that it can be sufficiently protected from oxidation and preserved over time. On the other hand, the spinel shell seems to be strongly, negatively impacted by a large population of defects, because these perturb the FiM ordering, and thus the shell's ability to interact with uncompensated or pinned spins in the core, near the interface. We find that raising the Co-concentration has a favourable effect on the properties of interest (Fig. S2, ESI†), including counter-balancing the detrimental defect-induced effects.

Therefore, designing plausible optimized core@shell MNPs, where sizeable H_{EB} and H_{C} are combined, while high magnetization values are maintained, would require devising NCs, bearing key characteristics, namely: (i) grown in the size range close to 15 nm, (ii) have a moderate Co substitution level ($\sim 10\%$), (iii) involve a well-preserved core, accounting for a

low-fraction ($\sim 20\text{--}30\%$) of the entire particle volume, with defects typical of a sub-stoichiometric rock-salt phase, and (iv) a spinel shell that is as less defective as possible, preferably resembling the ideal spinel structure. It is not surprising that S12, which presents a desired magnetic behavior (Fig. 10d and 11a), has such characteristics, making this sample a nearly optimal candidate for applications.

Calculation of the specific absorption rate (SAR)

The measured magnetic properties and the associated lattice-driven effects, discussed in the previous sections, aimed to set the stage for assessing the MNPs' application potential as smart heating mediators. The possibility for exploiting magnetic heating, generated by ferrite particles exposed to AC magnetic fields, offers an innovative modality in biomedical applications. To this extent magnetic hyperthermia treatment of tumours, has been extensively studied in recent years.⁸² Ferrite particles have been widely considered for such applications, as their heating power shows a marked dependency on the particle size and high sensitivity in size-distribution met in real samples.¹¹ In that respect, the largest among them ($d \sim 25$ nm), display enhanced magnetically-induced heating performances, especially when structural defects occurring during synthesis are eliminated.³⁰ However, under particular circumstances, during the oxidative transformation of $\text{Fe}_x\text{O}@_{\text{Fe}_3\text{O}_4}$ core-shell nanocubes ($d \sim 23$ nm), atomic scale defects, such as Fe^{2+} deficient sites, may positively influence hyperthermic properties.⁸³ Along this direction, raising the population of Fe-vacancies, in small size Fe_3O_4 nanospheres ($d \sim 8$ nm), seems to offer an alternative exploitable pathway for magnetic hyperthermia.³⁴ The differences in the observed heating responses are generally related to critical particle sizes⁸⁴ and magnetic anisotropy terms.⁸⁵ Thus, optimizing the latter for particle sizes, tailored within the biological compatible limits, set by toxicity and patient discomfort,⁸⁶ is particularly important. In this endeavor, heat generation capabilities can be assisted further by tuning the MNPs' morphology,⁵⁵ including topologically arranged coupled core and shell phases,¹² and increased cation deficiency or even control composition.

The detailed characterization of the $\text{Co}_y\text{Fe}_{1-y}\text{O}@_{\text{Co}_x\text{Fe}_{3-x}\text{O}_4}$ IONCs, involving properties such as H_{EB} and H_{C} , pertaining to exchange and magnetocrystalline anisotropies, was aimed at exploring possible complementary pathways for enhancing the heating performance of exchange coupled AFM/FiM phases. For this purpose, we calculated the SAR values for the studied MNPs, according to the linear response theory for the Néel-Brown relaxation model.¹⁰ (S2, ESI†) The calculations were performed for different AC field amplitudes, H_0 , at a frequency of $f = 500$ kHz. The SAR performance for MNPs with various structural characteristics is compiled in Fig. 12. The calculations compare Co-substituted (12%–35%) mixed-metal oxides, developed for this work, and two contrasting iron oxide particles, with no Co-incorporation, reported earlier. The latter are either similar to the Co-derivatives' size, with a $\text{Fe}_x\text{O}@_{\text{Fe}_3\text{O}_4}$ core@shell (S15; $d \sim 15$ nm) structure, or of a



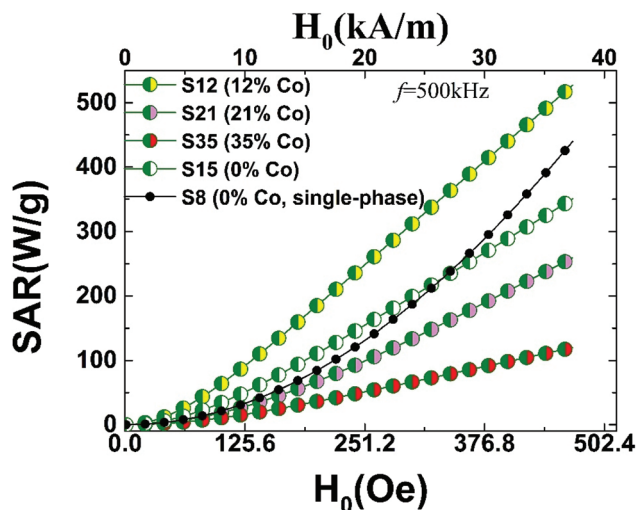


Fig. 12 Specific absorption rate (SAR) calculated on the grounds of susceptibility losses (AC field amplitude, H_0 and $f = 500$ kHz) for Co-substituted heterostructured nanocrystals (15 nm), which are compared with 8 nm (S8) and 15 nm (S15) Fe-containing only³⁴ nanocrystals; SAR values are derived in view of the linear response theory of a modified Néel-Brown relaxation Monte Carlo model.

sub-critical size, involving single-phase (S8; $d \sim 8$ nm), highly defective ferrosipinel NCs.³⁴

Since SAR shows a marked dependency on particle size, the size distribution in real samples is crucial when comparisons are drawn. For example, experiments on cobalt ferrite MNPs (8–25 nm) find SAR values ranging from 40–50 W g^{−1} in small sizes (8 nm) and depending on the conditions (H_0 , f), raise up to about 600–800 W g^{−1} at intermediate sizes (13–15 nm).⁸⁷ To place the present work in the context of related experiments, we would like to note that our calculated magnetic fluid heating power of 300–400 W g^{−1} (Fig. 12) for the present core@shell nanoparticles, are for example, within the window of measured SAR values, obtained from polydisperse iron-oxide (*cf.* maghemite and cobalt ferrite) nanoparticles,¹¹ with characteristic diameters between 12–17 nm (*i.e.* similar to our MNPs), studied also under related conditions ($H_0 = 24.8$ kA m^{−1} and $f = 700$ kHz).

The calculated SAR values follow a smooth monotonic increase (Fig. 12), resembling the experimentally measured upward trends reported previously.⁸⁴ The higher anisotropy volume of MNPs with a core@shell topology results in a deviation from the quadratic field dependence of the SAR,⁸⁷ displayed only by the smaller particle (S8). On one hand, increasing the anisotropy of ferrite MNPs, consisting of a single magnetic phase (S8) by introducing a large amount of defects and thus spin-pining centers, makes such particles to perform comparably to the Fe_xO@Fe₃O₄ system (S15) carrying higher exchange anisotropy (*cf.* S8–S15, Fig. 12). However, when the magnetocrystalline anisotropy is raised by introducing Co ions in the lattice, in addition to an already strongly exchange-coupled system, the resulting SAR performance is assisted further (*cf.* S12, Fig. 12), thus supporting our aforementioned

hypothesis for a nearly optimally designed candidate (S12). Worth noting though, that the simple coexistence of Co ions and AFM/FiM interfaces does not warrant enhanced SARs. Our calculations indicate that high magnetocrystalline anisotropies, usually expressed by large H_{CS} , and high exchange anisotropies, supported by sizeable H_{EB} s, are prerequisites for optimal SAR values. In fact, the evolution of the calculated SARs (*cf.* S12 > S15 > S21; Fig. 12) follows the trend obeyed by the related magnetic quantities (Fig. 11) that are mediated by compositional changes (*i.e.* Co-content and vacancies). Further Co-content increase generates an even weaker SAR performance (S35), due to the Co-mediated nanocrystal transformations and the consequent H_{EB} and H_C weakening, already discussed.

Conclusions

The effects of cobalt incorporation in spherical core@shell Co_yFe_{1−y}O@Co_xFe_{3−x}O₄ NCs ($d \sim 15$ nm) have been studied on an atomistic level. We find that the sub-stoichiometric rock salt-like wüstite (Fe₃O) tends to heal its vacant Fe sites upon Co substitution, helping its stabilization. The trend becomes more prominent at elevated Co levels that appear to impede the mechanism for the oxidative conversion of rock salt to spinel. Self-passivation of the initially formed rock salt NCs is still possible, creating a spinel-like shell, which yields core@shell nanostructures with relatively high volumetric ratios of the core phase that grows with the Co content. The xPDF analysis indicate that a higher divalent metal (M²⁺) stoichiometry in the rock salt part by Co-substitutions, results in increased levels of unoccupied tetrahedral (Td) sites in the spinel, likely through oxidative shell creation involving an ordered defect-clustering mechanism. The population of Td site atomic-scale defects of the shell is directly correlated to the core stabilization and increases when Co abundance increases. On the other hand, the extent of octahedral (Oh) vacant sites seems to follow the more conventional behavior met in ferrosipinel nanostructured systems.

Concerning the magnetic properties, the core-to-shell volumetric ratio is shown to have an immediate effect on the buried interface dimensions, thus affecting the exchange coupling interactions, reflecting a sizeable exchange-bias field (H_{EB}). The latter shows a strong correlation with the cooling field strength and depends on the ability of the available uncompensated spins at the AFM–FiM interfaces. On the other hand, the coexistence of Co sites and atomic-scale defects in the crystal structure, in the form of Fe- and/or Co-ion Td vacancies (predominantly in the spinel phase), significantly affects the magnetocrystalline anisotropy and magnetic ordering. We find that raising Co-concentration has favorable effect on the properties of interest, including changes in the magnetization values and coercive fields (H_C). In fact, the enhanced H_C and H_{EB} seem to be prerequisites for hyperthermic effects entailing high specific absorption rates (SAR).



Combining experiments with Monte Carlo simulations, we are able to suggest that designed heterostructured NCs of about 15 nm total diameter (*cf.* below the critical size, $d < 20\text{--}30\text{ nm}$), synthesized by controlled colloidal chemistry protocols, with a Co content level of about 10%, which leads to a volumetric fraction of the core to about 20–30% (over the whole particle volume), should result in optimal heating power. To achieve such a performance, the nanoarchitecture is dressed with the advantageous protection of the spinel shell, in contrast to not that well-performing, in terms of SAR, non-Co-containing iron oxide NCs. The suggested Co substitution level allows for a certain amount of desirable defects in the rock salt core, but would not create excessive vacancies in the Td sites in the spinel, which would perturb its otherwise beneficial FiM ordering and the shell's ability to interact with uncompensated spins near the buried interface. Fine tuning of such quantities, could result in MNPs with remarkable magnetically mediated heating power for possible hyperthermia applications.

Author contributions

Investigation: GAnt – synthesis/XRD/TEM/EDS; investigation: EB, MA, GAnt – PDF; investigation: VI and GAus – magnetic measurements; formal analysis: GAnt – experiment; formal analysis: MV and KNT – theory; writing – original draft: GAnt; writing – review and editing: GAnt, EB, AL; supervision: AL; project administration: AL; conceptualisation: AL.

Conflicts of interest

There are no conflicts to declare.

Acknowledgements

This research used the beamline 28-ID-2 of the National Synchrotron Light Source II, a U.S. Department of Energy (DOE) User Facility operated by Brookhaven National Laboratory (BNL). Work in the Condensed Matter Physics and Materials Science Division at BNL was supported by the DOE Office of Basic Energy Sciences. Both activities were supported by the DOE Office of Science under Contract No. DE-SC0012704. KNT and MV acknowledge the support received by the European Union's Horizon 2020 Research and Innovation Programme: FET Proactive under grant agreement No. 731976 MAGnetic nanoparticle based liquid ENergy materials for Thermoelectric device Applications (MAGENTA) www.magenta-h2020.eu.

Notes and references

- 1 M. Casavola, R. Buonsanti, G. Caputo and P. D. Cozzoli, *Eur. J. Inorg. Chem.*, 2008, **2008**, 837–854.
- 2 A.-H. Lu, W. Schmidt, N. Matoussevitch, H. Bönemann, B. Spliethoff, B. Tesche, E. Bill, W. Kiefer and F. Schüth, *Angew. Chem., Int. Ed.*, 2004, **43**, 4303–4306.
- 3 L. He, M. Wang, J. Ge and Y. Yin, *Acc. Chem. Res.*, 2012, **45**, 1431–1440.
- 4 N. A. Frey and S. Sun, *Inorganic Nanoparticles: Synthesis, Applications, and Perspectives*, CRC Press, 2011.
- 5 D. W. Elliott and W. Zhang, *Environ. Sci. Technol.*, 2001, **35**, 4922–4926.
- 6 P. Tartaj, M. P. Morales, T. Gonzalez-Carreño, S. Veintemillas-Verdaguer and C. J. Serna, *Adv. Mater.*, 2011, **23**, 5243–5249.
- 7 D. V. Talapin, J.-S. Lee, M. V. Kovalenko and E. V. Shevchenko, *Chem. Rev.*, 2010, **110**, 389–458.
- 8 Q. A. Pankhurst, J. Connolly, S. K. Jones and J. Dobson, *J. Phys. D: Appl. Phys.*, 2003, **36**, R167.
- 9 G. C. Papaefthymiou, *Nano Today*, 2009, **4**, 438–447.
- 10 R. E. Rosensweig, *J. Magn. Magn. Mater.*, 2002, **252**, 370–374.
- 11 J.-P. Fortin, C. Wilhelm, J. Servais, C. Ménager, J.-C. Bacri and F. Gazeau, *J. Am. Chem. Soc.*, 2007, **129**, 2628–2635.
- 12 S. Noh, W. Na, J. Jang, J.-H. Lee, E. J. Lee, S. H. Moon, Y. Lim, J.-S. Shin and J. Cheon, *Nano Lett.*, 2012, **12**, 3716–3721.
- 13 S. Leulmi, H. Joisten, T. Dietsch, C. Iss, M. Morcrette, S. Auffret, P. Sabon and B. Dieny, *Appl. Phys. Lett.*, 2013, **103**, 132412.
- 14 R. Ghosh Chaudhuri and S. Paria, *Chem. Rev.*, 2012, **112**, 2373–2433.
- 15 J. Nogués and I. K. Schuller, *J. Magn. Magn. Mater.*, 1999, **192**, 203–232.
- 16 M.-H. Phan, J. Alonso, H. Khurshid, P. Lampen-Kelley, S. Chandra, K. Stojak Repa, Z. Nemati, R. Das, Ó. Iglesias and H. Srikanth, *Nanomaterials*, 2016, **6**, 221.
- 17 A. H. Habib, C. L. Ondeck, P. Chaudhary, M. R. Bockstaller and M. E. McHenry, *J. Appl. Phys.*, 2008, **103**, 07A307.
- 18 W. Baaziz, B. P. Pichon, Y. Liu, J.-M. Grenèche, C. Ulhaq-Bouillet, E. Terrier, N. Bergeard, V. Halté, C. Boeglin, F. Choueikani, M. Toumi, T. Mhiri and S. Begin-Colin, *Chem. Mater.*, 2014, **26**, 5063–5073.
- 19 A. Pardo, B. Pelaz, J. Gallo, M. Bañobre-López, W. J. Parak, S. Barbosa, P. del Pino and P. Taboada, *Chem. Mater.*, 2020, **32**, 2220–2231.
- 20 R. Kant, D. Sharma, A. Bansal and R. Singh, *Mater. Technol.*, 2021, **36**, 513–520.
- 21 K. Pradeev raj, K. Sadaiyandi, A. Kennedy, S. Sagadevan, Z. Z. Chowdhury, M. R. B. Johan, F. A. Aziz, R. F. Rafique, R. Thamiz Selvi and R. Rathina bala, *Nanoscale Res. Lett.*, 2018, **13**, 229.
- 22 B. Cojocaru, D. Avram, V. Kessler, V. Parvulescu, G. Seisenbaeva and C. Tiseanu, *Sci. Rep.*, 2017, **7**, 9598.
- 23 P. Bhattacharya and S. Neogi, *Rev. Chem. Eng.*, 2019, **35**, 861–876.
- 24 P. R. Kratzert, J. Puls, M. Rabe and F. Henneberger, *Appl. Phys. Lett.*, 2001, **79**, 2814–2816.



- 25 R. Beaulac, P. I. Archer, S. T. Ochsenein and D. R. Gamelin, *Adv. Funct. Mater.*, 2008, **18**, 3873–3891.
- 26 D. Chen, R. Viswanatha, G. L. Ong, R. Xie, M. Balasubramanian and X. Peng, *J. Am. Chem. Soc.*, 2009, **131**, 9333–9339.
- 27 S. Gupta, S. V. Kershaw and A. L. Rogach, *Adv. Mater.*, 2013, **25**, 6923–6944.
- 28 X. Liu, Y. Zhang, Y. Wang, W. Zhu, G. Li, X. Ma, Y. Zhang, S. Chen, S. Tiwari, K. Shi, S. Zhang, H. M. Fan, Y. X. Zhao and X.-J. Liang, *Theranostics*, 2020, **10**, 3793–3815.
- 29 A. Rajan and N. K. Sahu, *J. Nanopart. Res.*, 2020, **22**, 319.
- 30 R. Chen, M. G. Christiansen, A. Sourakov, A. Mohr, Y. Matsumoto, S. Okada, A. Jasanoff and P. Anikeeva, *Nano Lett.*, 2016, **16**, 1345–1351.
- 31 S. Tong, C. A. Quinto, L. Zhang, P. Mohindra and G. Bao, *ACS Nano*, 2017, **11**, 6808–6816.
- 32 J.-H. Lee, J. Jang, J. Choi, S. H. Moon, S. Noh, J. Kim, J.-G. Kim, I.-S. Kim, K. I. Park and J. Cheon, *Nat. Nanotechnol.*, 2011, **6**, 418–422.
- 33 D. Yoo, H. Jeong, S.-H. Noh, J.-H. Lee and J. Cheon, *Angew. Chem., Int. Ed.*, 2013, **52**, 13047–13051.
- 34 A. Lappas, G. Antonaropoulos, K. Brintakis, M. Vasilakaki, K. N. Trohidou, V. Iannotti, G. Ausanio, A. Kostopoulou, M. Abeykoon, I. K. Robinson and E. S. Bozin, *Phys. Rev. X*, 2019, **9**, 041044.
- 35 S. Anjum, R. Tufail, K. Rashid, R. Zia and S. Riaz, *J. Magn. Magn. Mater.*, 2017, **432**, 198–207.
- 36 E. Fantechi, C. Innocenti, M. Albino, E. Lottini and C. Sangregorio, *J. Magn. Magn. Mater.*, 2015, **380**, 365–371.
- 37 J. Park, K. An, Y. Hwang, J.-G. Park, H.-J. Noh, J.-Y. Kim, J.-H. Park, N.-M. Hwang and T. Hyeon, *Nat. Mater.*, 2004, **3**, 891–895.
- 38 H. Khurshid, W. Li, S. Chandra, M.-H. Phan, G. C. Hadjipanayis, P. Mukherjee and H. Srikanth, *Nanoscale*, 2013, **5**, 7942.
- 39 M. I. Bodnarchuk, M. V. Kovalenko, H. Groiss, R. Resel, M. Reissner, G. Hesser, R. T. Lechner, W. Steiner, F. Schäffler and W. Heiss, *Small*, 2009, **5**, 2247–2252.
- 40 R. U. Ichikawa, A. G. Roca, A. López-Ortega, M. Estrader, I. Peral, X. Turrillas and J. Nogués, *Small*, 2018, **14**, 1800804.
- 41 A. Lak, M. Kraken, F. Ludwig, A. Kornowski, D. Eberbeck, S. Sievers, F. J. Litterst, H. Weller and M. Schilling, *Nanoscale*, 2013, **5**, 12286–12295.
- 42 E. Wetterskog, C.-W. Tai, J. Grins, L. Bergström and G. Salazar-Alvarez, *ACS Nano*, 2013, **7**, 7132–7144.
- 43 C.-J. Chen, R.-K. Chiang, H.-Y. Lai and C.-R. Lin, *J. Phys. Chem. C*, 2010, **114**, 4258–4263.
- 44 D. W. Kavich, J. H. Dickerson, S. V. Mahajan, S. A. Hasan and J.-H. Park, *Phys. Rev. B: Condens. Matter Mater. Phys.*, 2008, **78**, 174414.
- 45 J. Lohr, M. Vasquez Mansilla, M. V. Gerbaldo, M. S. Moreno, D. Tobia, G. F. Goya, E. L. Winkler, R. D. Zysler and E. Lima Jr, *J. Nanopart. Res.*, 2021, **23**, 140.
- 46 B. Kowalczyk, I. Lagzi and B. A. Grzybowski, *Curr. Opin. Colloid Interface Sci.*, 2011, **16**, 135–148.
- 47 C. A. Schneider, W. S. Rasband and K. W. Eliceiri, *Nat. Methods*, 2012, **9**, 671–675.
- 48 *Underneath the Bragg Peaks Structural Analysis of Complex Materials*, ed., T. Egami and S. J. L. Billinge, Pergamon, 2012, vol. 16, pp. ii.
- 49 S. J. L. Billinge and M. G. Kanatzidis, *Chem. Commun.*, 2004, 749–760.
- 50 A. P. Hammersley, S. O. Svensson, M. Hanfland, A. N. Fitch and D. Hausermann, *High Pressure Res.*, 1996, **14**, 235–248.
- 51 P. Juhás, T. Davis, C. L. Farrow and S. J. L. Billinge, *J. Appl. Crystallogr.*, 2013, **46**, 560–566.
- 52 C. L. Farrow, P. Juhas, J. W. Liu, D. Bryndin, E. S. Bozin, J. Bloch, T. Proffen and S. J. L. Billinge, *J. Phys.: Condens. Matter*, 2007, **19**, 335219.
- 53 M. Vasilakaki and K. N. Trohidou, *Phys. Rev. B: Condens. Matter Mater. Phys.*, 2009, **79**, 144402.
- 54 M. Vasilakaki, K. N. Trohidou and J. Nogués, *Sci. Rep.*, 2015, **5**, srep09609.
- 55 M. Vasilakaki, C. Binns and K. N. Trohidou, *Nanoscale*, 2015, **7**, 7753–7762.
- 56 B. D. Cullity and C. D. Graham, *Introduction to Magnetic Materials*, John Wiley & Sons, Inc., 2nd edn, 2009.
- 57 M. Fantauzzi, F. Secci, M. Sanna Angotzi, C. Passiu, C. Cannas and A. Rossi, *RSC Adv.*, 2019, **9**, 19171–19179.
- 58 A. Lak, S. Disch and P. Bender, *Adv. Sci.*, 2021, **8**, 2002682.
- 59 C. R. A. Catlow and B. E. F. Fender, *J. Phys. C: Solid State Phys.*, 1975, **8**, 3267–3279.
- 60 R. M. Hazen and R. Jeanloz, *Rev. Geophys.*, 1984, **22**, 37–46.
- 61 C.-J. Chen, R.-K. Chiang, S. Kamali and S.-L. Wang, *Nanoscale*, 2015, **7**, 14332–14343.
- 62 W. H. Bragg, *London, Edinburgh Dublin Philos. Mag. J. Sci.*, 1915, **30**, 305–315.
- 63 R. W. G. Wyckoff and E. D. Crittenden, *Z. Kristallogr. – Cryst. Mater.*, 1926, **63**, 144–147.
- 64 F. L. Deepak, M. Bañobre-López, E. Carbó-Argibay, M. F. Cerqueira, Y. Piñeiro-Redondo, J. Rivas, C. M. Thompson, S. Kamali, C. Rodríguez-Abreu, K. Kovnir and Y. V. Kolen'ko, *J. Phys. Chem. C*, 2015, **119**, 11947–11957.
- 65 E. Lottini, A. López-Ortega, G. Bertoni, S. Turner, M. Meledina, G. Van Tendeloo, C. de Julián Fernández and C. Sangregorio, *Chem. Mater.*, 2016, **28**, 4214–4222.
- 66 K. N. Trueblood, H.-B. Bürgi, H. Burzlaff, J. D. Dunitz, C. M. Gramaccioli, H. H. Schulz, U. Shmueli and S. C. Abrahams, *Acta Crystallogr., Sect. A: Found. Crystallogr.*, 1996, **52**, 770–781.
- 67 H. Rijckaert, J. De Roo, M. Van Zele, S. Banerjee, H. Huhtinen, P. Paturi, J. Bennewitz, S. Billinge, M. Bäcker, K. De Buysser and I. Van Driessche, *Materials*, 2018, **11**, 1066.
- 68 S. Banerjee, C.-H. Liu, J. D. Lee, A. Kovyakh, V. Grasmik, O. Prymak, C. Koenigsmann, H. Liu, L. Wang, A. M. M. Abeykoon, S. S. Wong, M. Epple, C. B. Murray and S. J. L. Billinge, *J. Phys. Chem. C*, 2018, **122**, 29498–29506.
- 69 J. J. Rehr and R. C. Albers, *Rev. Mod. Phys.*, 2000, **72**, 621–654.



- 70 D. S. Schmool and H. Kachkachi, *Solid State Physics*, ed. R. E. Camley and R. L. Stamps, Academic Press, 2016, vol. 67, pp. 1–101.
- 71 S. Bedanta and W. Kleemann, *J. Phys. D: Appl. Phys.*, 2008, **42**, 013001.
- 72 P. A. Cox, *Transition Metal Oxides: An Introduction to Their Electronic Structure and Properties*, Clarendon Press, 1992, p. 134.
- 73 E. J. W. Verwey and J. H. de Boer, *Recl. Trav. Chim. Pays-Bas*, 1936, **55**, 531–540.
- 74 M. Bohra, K. E. Prasad, R. Bollina, S. C. Sahoo and N. Kumar, *J. Magn. Magn. Mater.*, 2016, **418**, 137–142.
- 75 A. Mitra, J. Mohapatra, S. S. Meena, C. V. Tomy and M. Aslam, *J. Phys. Chem. C*, 2014, **118**, 19356–19362.
- 76 K. L. López Maldonado, L. Vazquez Zubiate, P. de la Presa, J. A. Matutes Aquino and J. T. Elizalde Galindo, *J. Appl. Phys.*, 2014, **115**, 17C705.
- 77 L. Hu, C. de Montferrand, Y. Lalatonne, L. Motte and A. Brioude, *J. Phys. Chem. C*, 2012, **116**, 4349–4355.
- 78 L. Del Bianco, D. Fiorani, A. M. Testa, E. Bonetti and L. Signorini, *Phys. Rev. B: Condens. Matter Mater. Phys.*, 2004, **70**, 052401.
- 79 M. Y. Khan, C.-B. Wu and W. Kuch, *Phys. Rev. B: Condens. Matter Mater. Phys.*, 2014, **89**, 094427.
- 80 A. P. Malozemoff, *Phys. Rev. B: Condens. Matter Mater. Phys.*, 1987, **35**, 3679–3682.
- 81 M. D. Stiles and R. D. McMichael, *Phys. Rev. B: Condens. Matter Mater. Phys.*, 2001, **63**, 064405.
- 82 C. H. Li, P. Hodgins and G. P. Peterson, *J. Appl. Phys.*, 2011, **110**, 054303.
- 83 A. Lak, M. Cassani, B. T. Mai, N. Winckelmans, D. Cabrera, E. Sadrollahi, S. Marras, H. Remmer, S. Fiorito, L. Cremades-Jimeno, F. J. Litterst, F. Ludwig, L. Manna, F. J. Teran, S. Bals and T. Pellegrino, *Nano Lett.*, 2018, **18**, 6856–6866.
- 84 G. Vallejo-Fernandez, O. Whear, A. G. Roca, S. Hussain, J. Timmis, V. Patel and K. O'Grady, *J. Phys. D: Appl. Phys.*, 2013, **46**, 312001.
- 85 R. Hergt, S. Dutz and M. Zeisberger, *Nanotechnology*, 2010, **21**, 015706.
- 86 M. S. Carrião and A. F. Bakuzis, *Nanoscale*, 2016, **8**, 8363–8377.
- 87 T. E. Torres, E. Lima, M. P. Calatayud, B. Sanz, A. Ibarra, R. Fernández-Pacheco, A. Mayoral, C. Marquina, M. R. Ibarra and G. F. Goya, *Sci. Rep.*, 2019, **9**, 3992.

